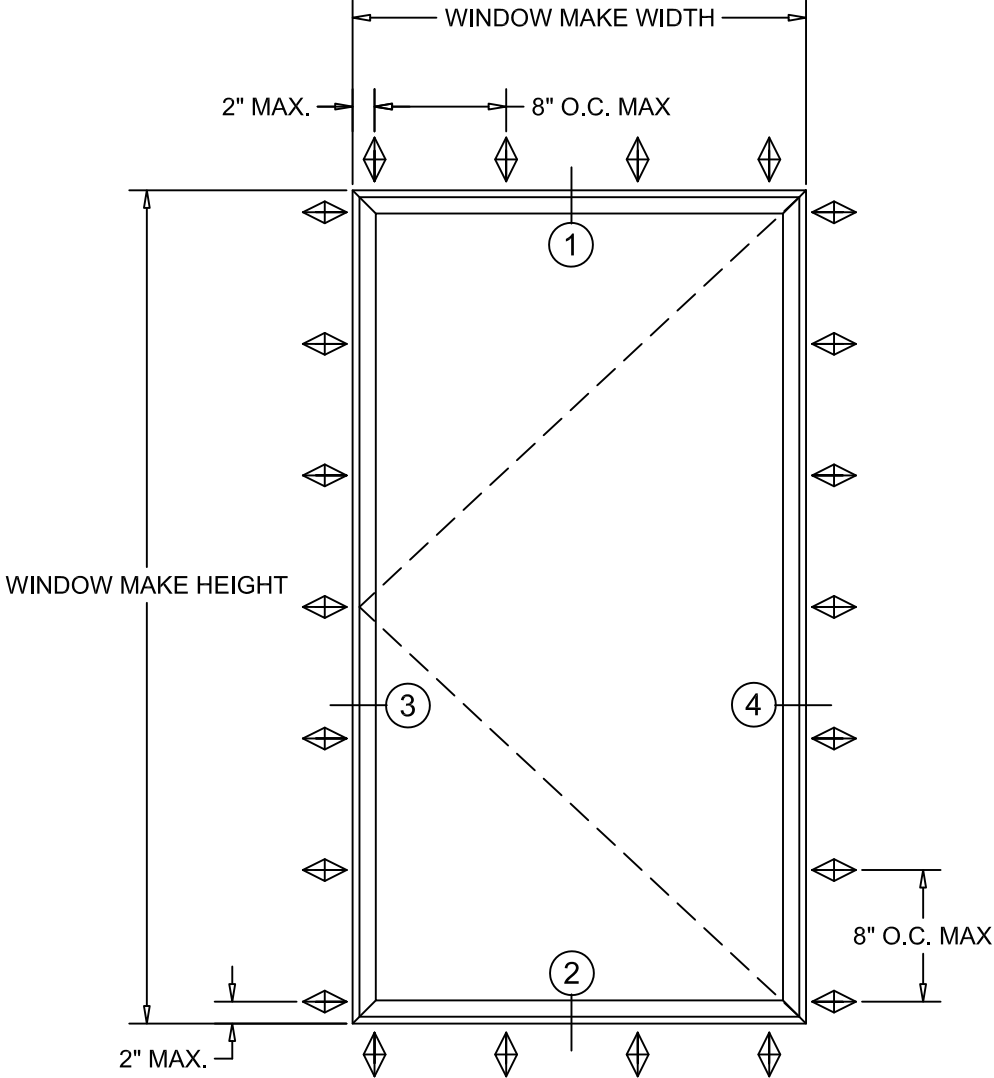


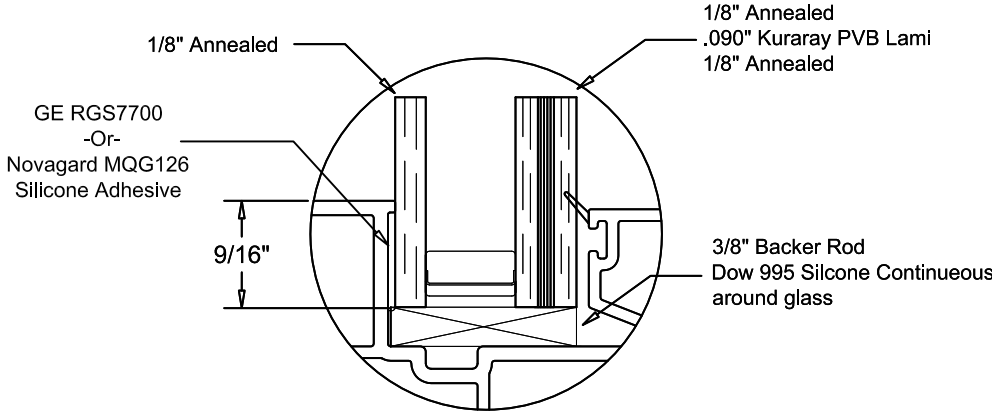
# NOTE: TYPICAL V700 O.S. CASEMENT VINYL IMPACT WINDOW - INSTALLATION INSTRUCTIONS



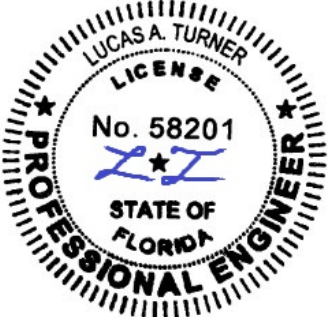
Maximum				
FW	FH	DLO-W	DLO-H	Pressure
36"	72"	29 1/8"	65 1/8"	± 50 PSF

**Notes:**

1. Installations depicted satisfy the requirements of the 8th Edition (2023) of the Florida Building Code for Wind Pressures and Overall Sizes shown.
2. Min. Required Anchor spacings are shown on the Elevations.
3. Wood Framing are assumed to be S-P-F (G=0.42) or denser.
4. Metal stud frames are assumed to be a minimum 16 gauge 33 KSI Steel.
5. Concrete masonry (CMU) shall conform to ASTM C90.
6. Concrete shall be minimum  $f_c = 3,000$  psi.
7. Wood Screws shall meet requirements of ANSI/ASME B18.6.1.
8. TEKS screws shall be ASTM A510 Grade 1018 or equivalent.
9. Maximum Frame Shim Space is  $\frac{1}{4}$ " as shown. Shims shall be non-compressible load bearing type.
10. Exterior and Interior shall be sealed according to Shop Drawings. Sealing and flashing strategies and overall water resistance of the installed product are the responsibility of others and are not addressed in this document.
11. Products shown are Impact Resistant, ASTM E 1996 Missile Level D
12. Not for use in High Velocity Hurricane Zone (HVHZ).



Glass Makeup



7/27/2023  
 LUCAS TURNER  
 FL PE 58201  
 TURNER ENGINEERING &  
 CONSULTING, INC.  
 2428 OLD NATCHEZ TRACE TRL.  
 CAMDEN, TN, 38320  
 PH 941-380-1574

Project Name:  
**V700 O.S. CASEMENT  
 ANCHOR LOCATIONS  
 Installation Instructions**

**GENERAL NOTES**

QUAKER WINDOW PRODUCTS  
 WILL NOT BE RESPONSIBLE  
 FOR FIELD MEASUREMENT  
 QUANTITIES, & INSTALLATION  
 DESIGN. CONTRACTOR MUST  
 VERIFY ALL DIMENSIONS.

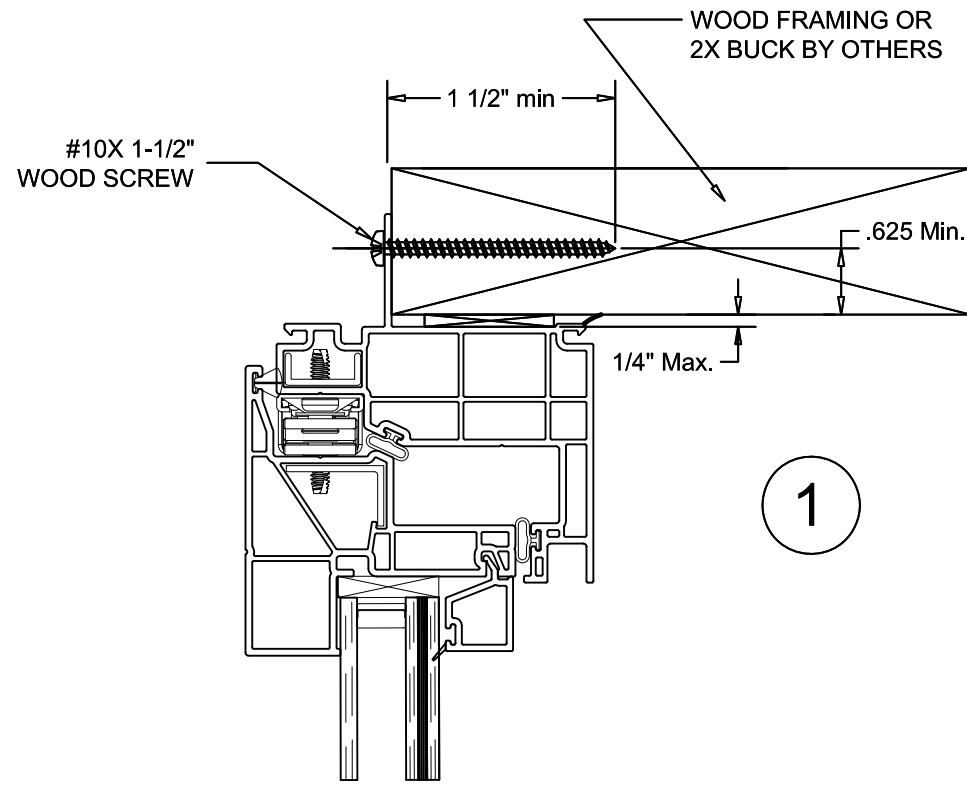
PHONE (573)-744-5211  
 FAX (573)-744-5586  
 COMMERCIAL  
 FAX (573)-744-5822  
 www.quakerwindows.com



Scale: NONE  
 Sheet #: 1 of 5  
 Drawn By: Bud  
 Date: 07-10-2023



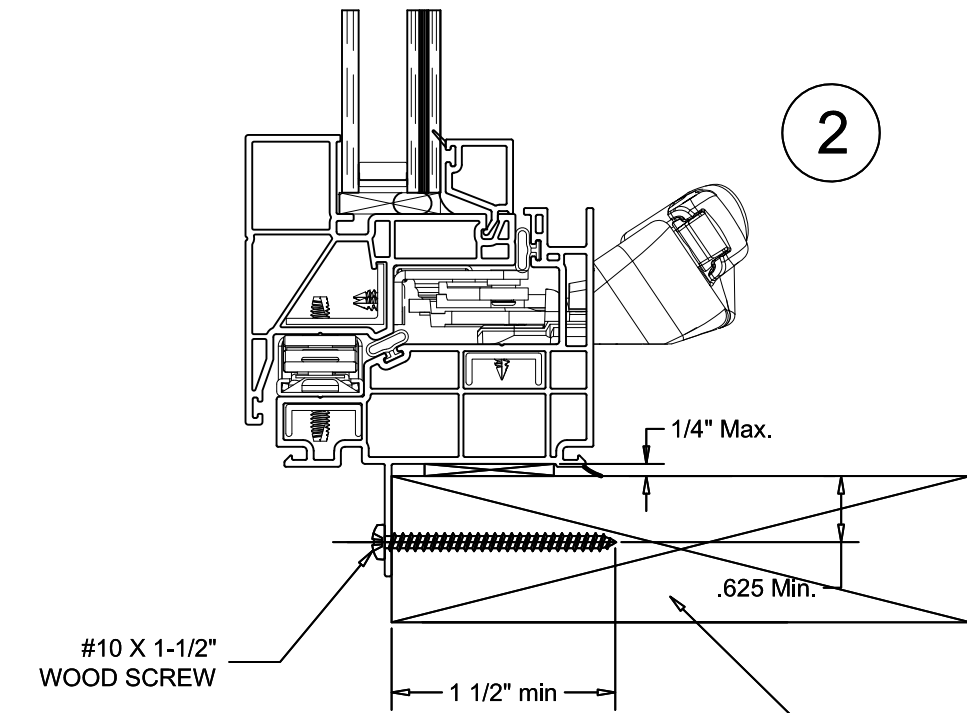
# NOTE: TYPICAL V700 O.S. CASEMENT VINYL IMPACT WINDOW - NAIL FIN - WOOD



EXTERIOR

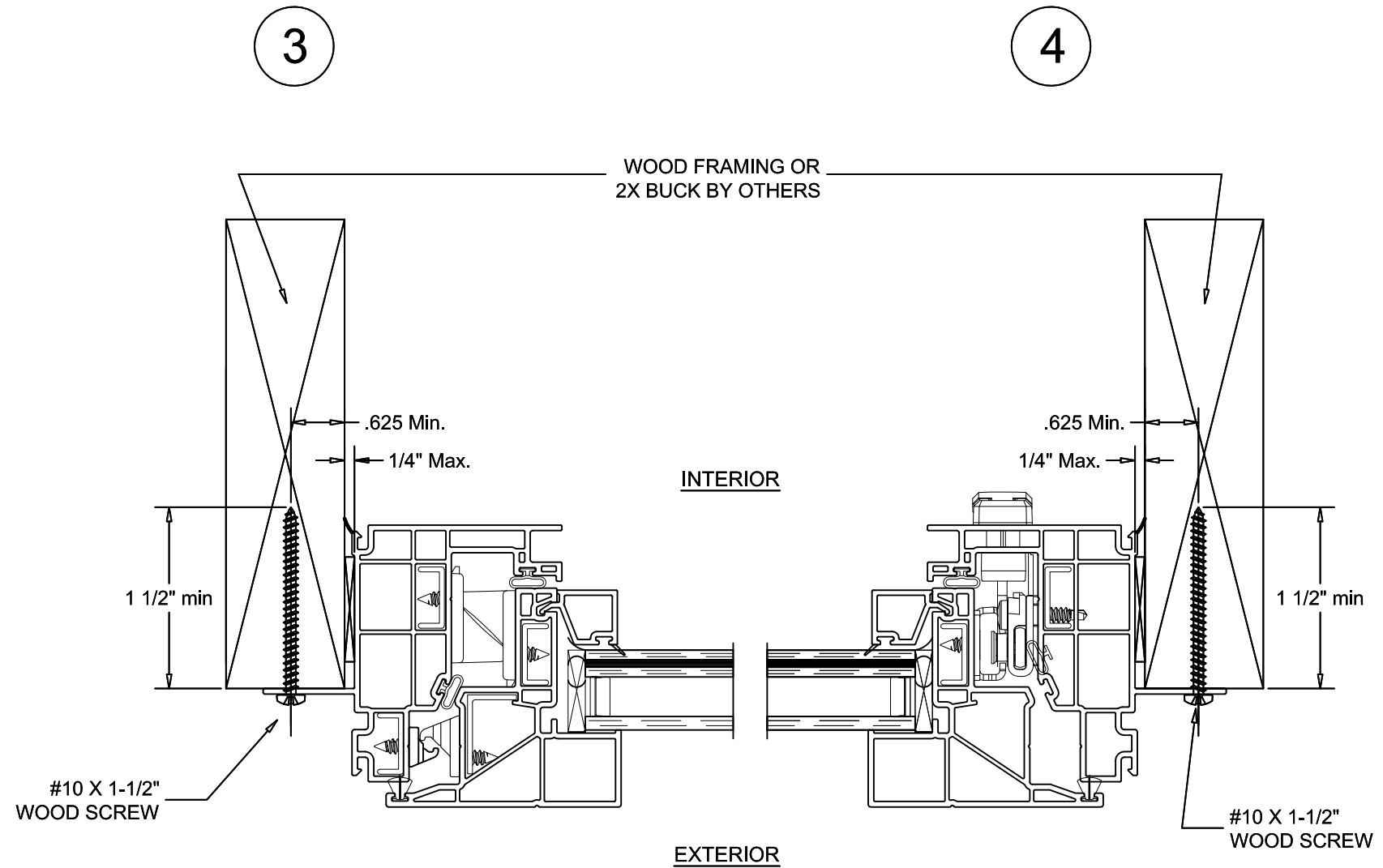
INTERIOR

1



VERTICAL SECTION DETAIL

WOOD FRAMING INSTALLATION



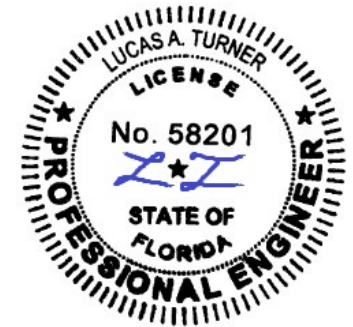
INTERIOR

EXTERIOR

3

4

HORIZONTAL SECTION DETAIL  
WOOD FRAMING INSTALLATION



7/27/2023  
LUCAS TURNER  
FL PE 58201  
TURNER ENGINEERING &  
CONSULTING, INC.  
2428 OLD NATCHEZ TRACE TRL.  
CAMDEN, TN, 38320  
PH 941-380-1574

Project Name:  
**V700 O.S. CASEMENT  
NAIL FIN**  
Installation Instructions

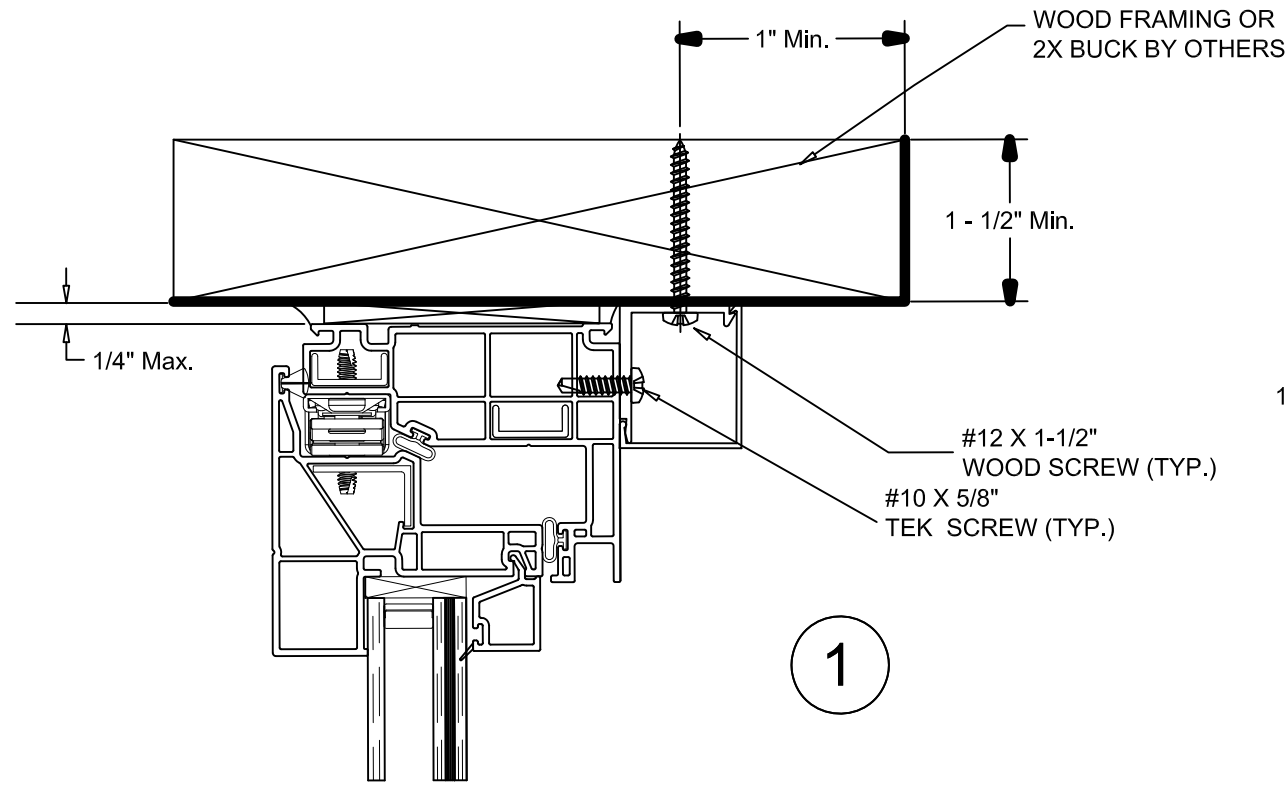
## GENERAL NOTES

QUAKER WINDOW PRODUCTS  
WILL NOT BE RESPONSIBLE  
FOR FIELD MEASUREMENT  
QUANTITIES, & INSTALLATION  
DESIGN. CONTRACTOR MUST  
VERIFY ALL DIMENSIONS.

PHONE (573)-744-5211 FAX (573)-744-5586 COMMERCIAL www.quakerwindows.com	Scale: NONE	Sheet #: 2 of 5
504 Highway 63 South Freeburg, MO 65035 drafting@quakerwindows.com	Drawn By: Bud	Date: 07-10-2023

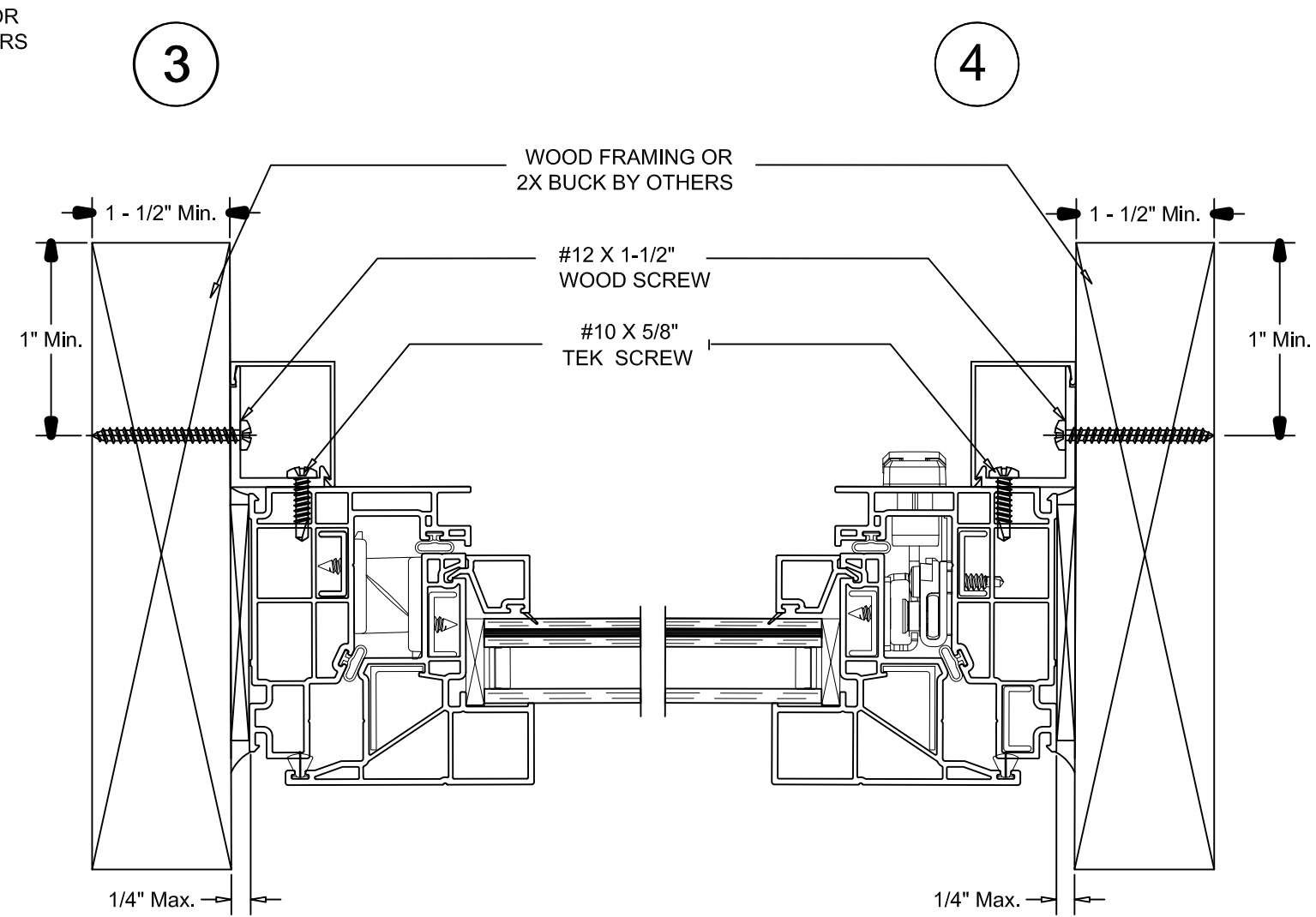


# NOTE: TYPICAL V700 O.S. CASEMENT VINYL IMPACT WINDOW - M17072 TRIM & CLIP



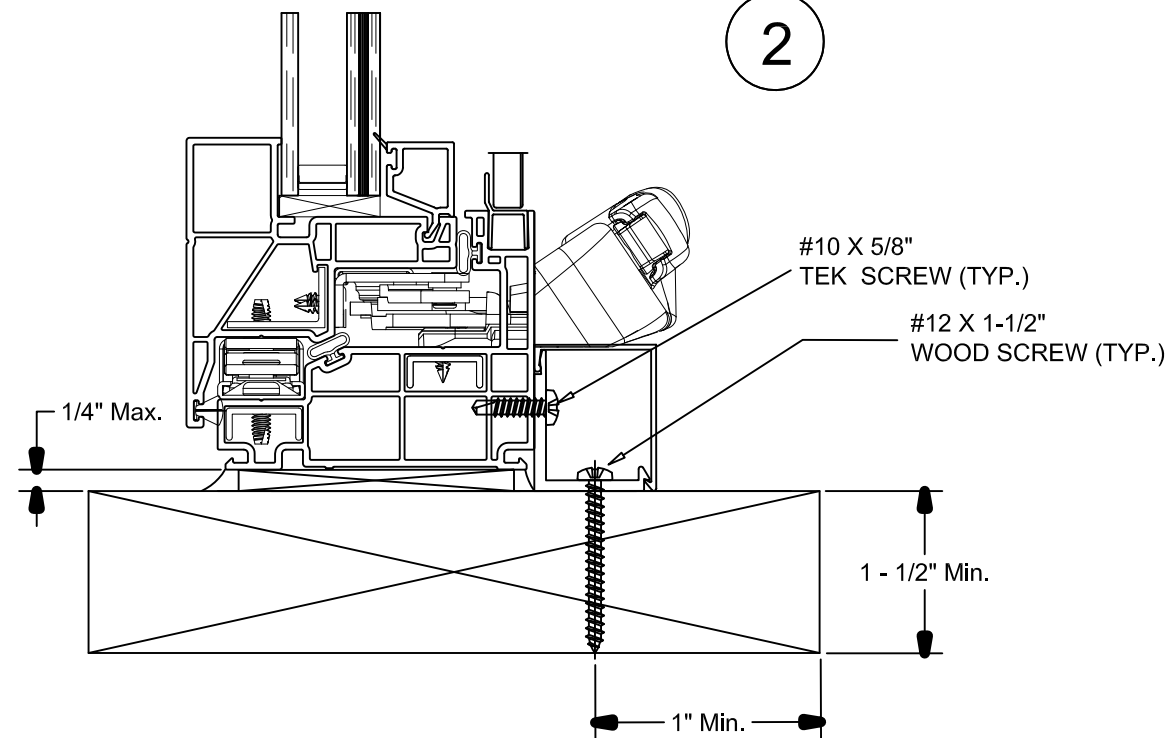
EXTERIOR

INTERIOR



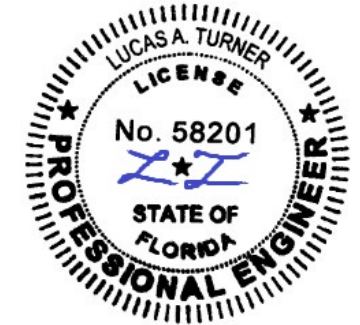
HORIZONTAL SECTION DETAIL

WOOD FRAMING INSTALLATION



VERTICAL SECTION DETAIL

WOOD FRAMING INSTALLATION



7/27/2023  
 LUCAS TURNER  
 FL PE 58201  
 TURNER ENGINEERING &  
 CONSULTING, INC.  
 2428 OLD NATCHEZ TRACE TRL.  
 CAMDEN, TN, 38320  
 PH 941-380-1574

Project Name:  
**V700 O.S. CASEMENT  
 Trim & Clip**  
**Installation Instructions**

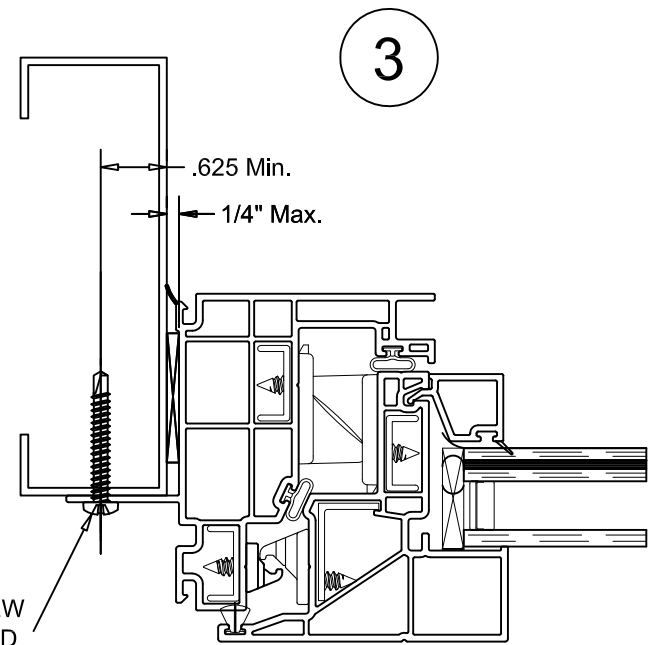
## GENERAL NOTES

QUAKER WINDOW PRODUCTS  
 WILL NOT BE RESPONSIBLE  
 FOR FIELD MEASUREMENT  
 QUANTITIES, & INSTALLATION  
 DESIGN. CONTRACTOR MUST  
 VERIFY ALL DIMENSIONS.

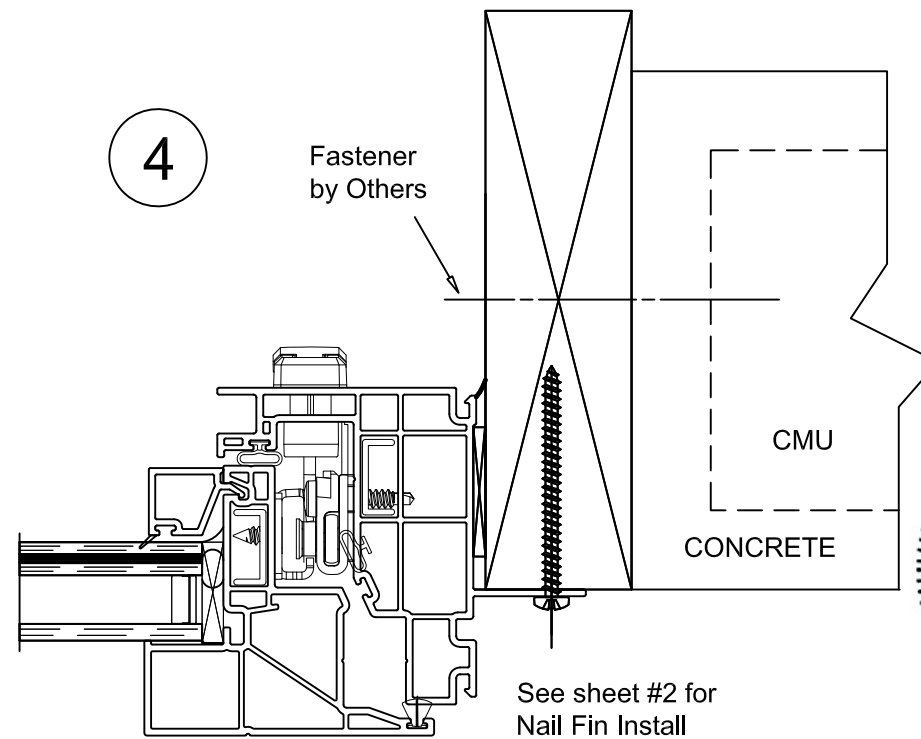
PHONE (573)-744-5211 FAX (573)-744-5586 COMMERCIAL www.quakerwindows.com	Scale: NONE	Sheet #: 3 of 5
504 Highway 63 South Freeburg, MO 65035 drafting@quakerwindows.com		
Drawn By: Bud		
Date: 07-10-2023		



# NOTE: TYPICAL V700 O.S. CASEMENT VINYL IMPACT WINDOW - ALTERNATE SURROUND



#10-16 TEKS SCREW  
MIN 3 FULL THREAD  
PENETRATION OF STEEL



Fastener  
by Others

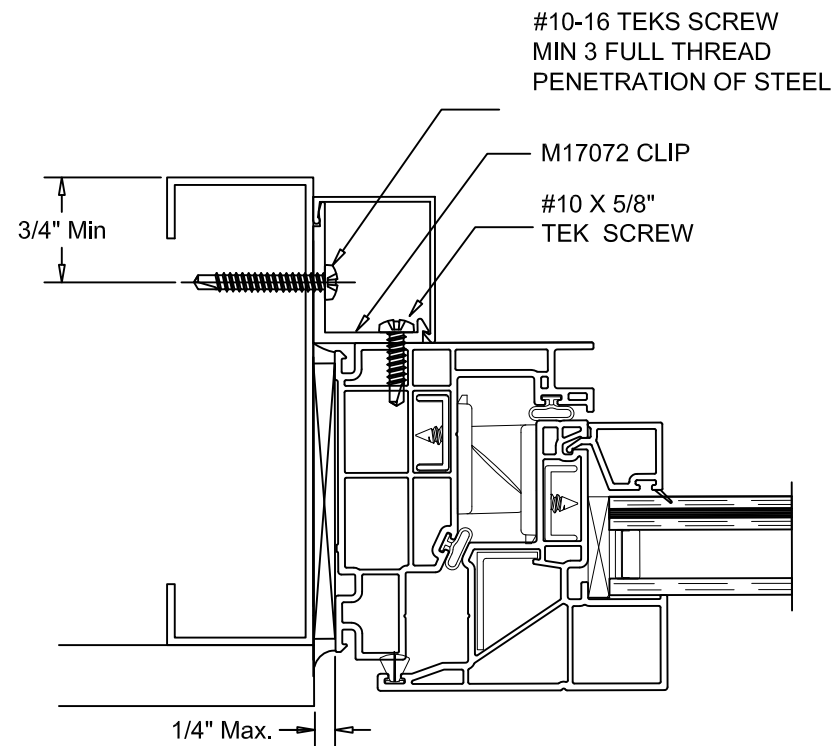
CMU  
CONCRETE

See sheet #2 for  
Nail Fin Install



7/27/2023  
LUCAS TURNER  
FL PE 58201  
TURNER ENGINEERING &  
CONSULTING, INC.  
2428 OLD NATCHEZ TRACE TRL.  
CAMDEN, TN, 38320  
PH 941-380-1574

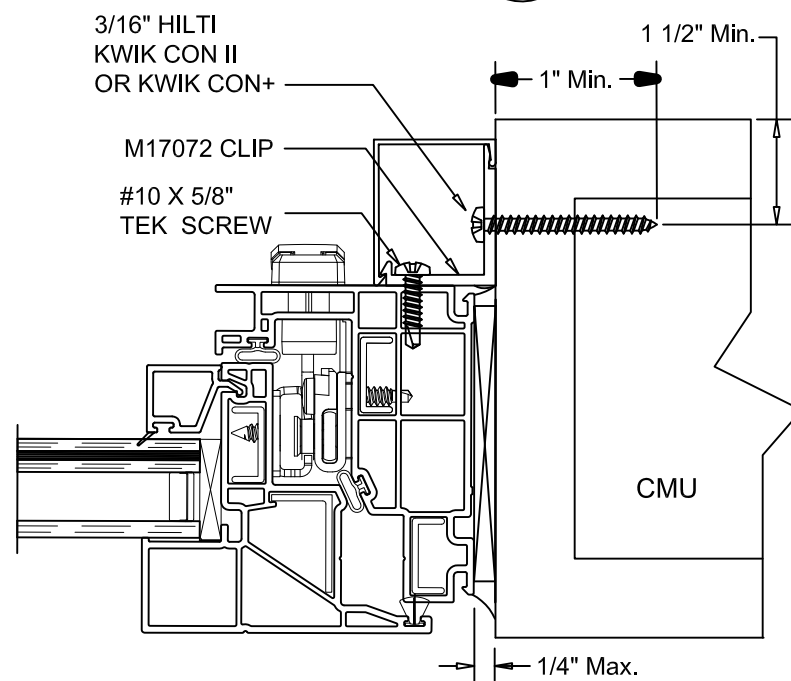
3



#10-16 TEKS SCREW  
MIN 3 FULL THREAD  
PENETRATION OF STEEL

M17072 CLIP  
#10 X 5/8"  
TEK SCREW

4

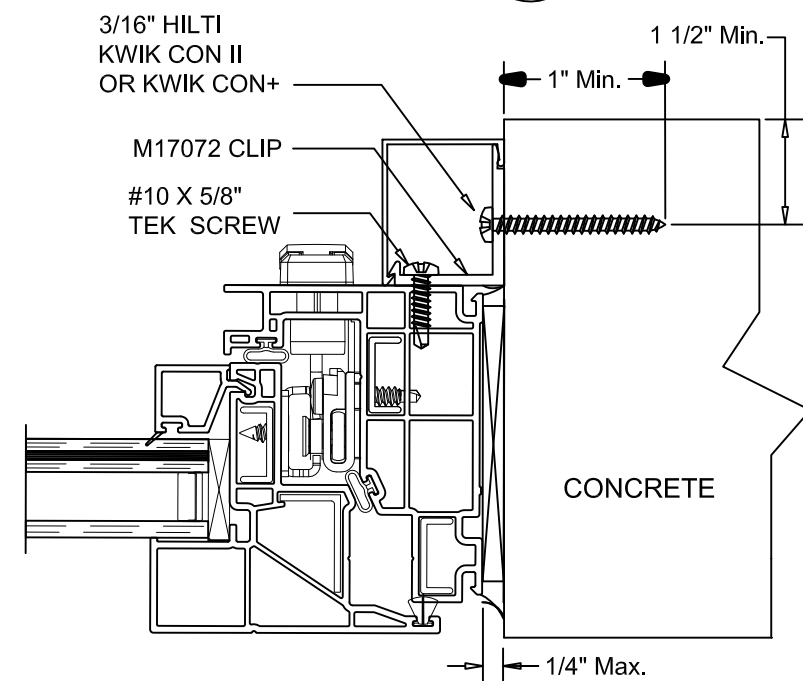


3/16" HILTI  
KWIK CON II  
OR KWIK CON+

M17072 CLIP  
#10 X 5/8"  
TEK SCREW

CMU

4



3/16" HILTI  
KWIK CON II  
OR KWIK CON+

M17072 CLIP  
#10 X 5/8"  
TEK SCREW

CONCRETE

## GENERAL NOTES

Project Name:  
**V700 O.S. CASEMENT  
ALTERNATE SURROUND  
Installation Instructions**

Description:

QUAKER WINDOW PRODUCTS  
WILL NOT BE RESPONSIBLE  
FOR FIELD MEASUREMENT,  
QUANTITIES, & INSTALLATION  
DESIGN. CONTRACTOR MUST  
VERIFY ALL DIMENSIONS.

PHONE (573)-744-5211  
FAX (573)-744-5586  
COMMERCIAL  
www.quakerwindows.com



Scale: **NONE**  
Sheet #: 4 of 5

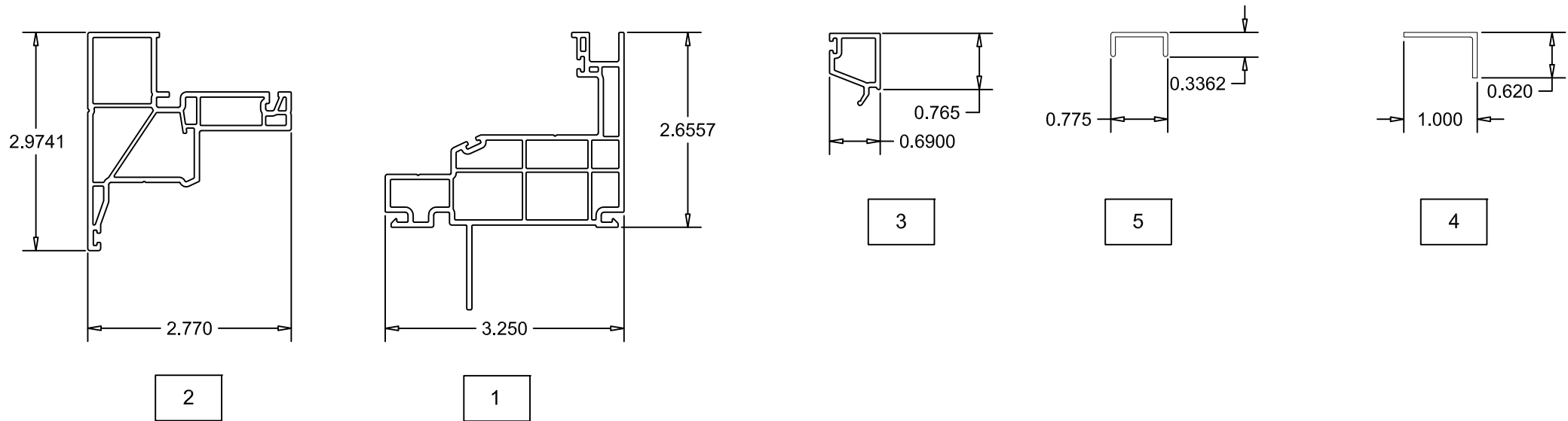
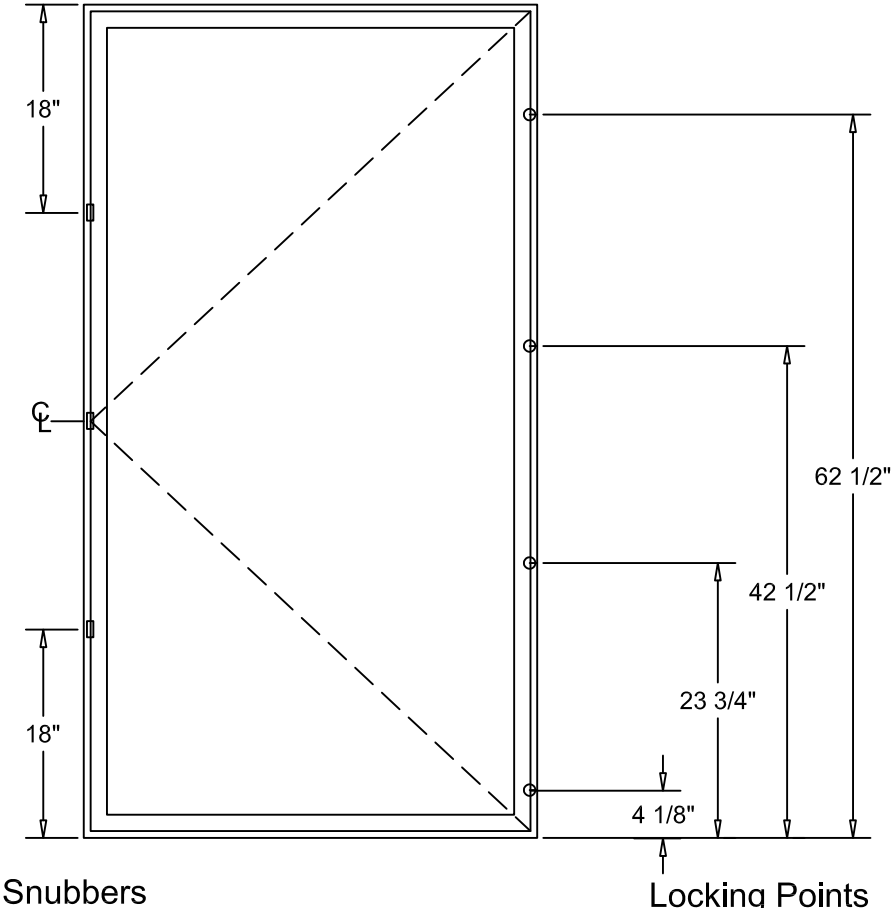
Drawn By: **Bud**  
Date: **07-10-2023**

504 Highway 63 South  
Freeburg, MO 65035  
drafting@quakerwindows.com



**NOTE: TYPICAL V700 O.S. CASEMENT VINYL IMPACT WINDOW**

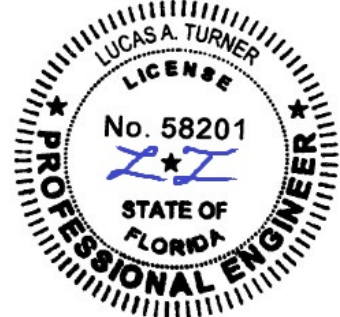
Bill of Materials				
NO.	Description	Part Number	Material	Manufacturer
1	Frame	VS696	Rigid PVC	Royal Extrusions
2	Sash	VS697	Rigid PVC	Royal Extrusions
3	Glazing Bead	VS699	Rigid / Flex PVC	Royal Extrusions
4	Reinforcement Angle	M7596	Aluminum 6061-T6	Tower Extrusions
5	Reinforcement Channel	M21391	Aluminum 6063-T6	Tower Extrusions
6	Backbedding	4573	Silicone	ADFAST
7	Structural Sealant	Dow Corning 995	Silicone	Dow Corning
8	Maxim MP Lock Assy	24-43-02-001		Truth
9	Tie-Bar 4pt	14634-92		Truth
10	Keeper	24081-93		Truth
11	4-Bar Csmt Hinge 12"	4012LR		Advantage Hardware
12	Snubber	1500		Vision Hardware
13	Snubber	22999/23555		Truth



Project Name: **V700 O.S. CASEMENT**  
**Extrusions - HDW - Locations**  
**Installation Instructions**

**GENERAL NOTES**

QUAKER WINDOW PRODUCTS WILL NOT BE RESPONSIBLE FOR FIELD MEASUREMENT QUANTITIES, & INSTALLATION DESIGN. CONTRACTOR MUST VERIFY ALL DIMENSIONS.



7/27/2023  
 LUCAS TURNER  
 FL PE 58201  
 TURNER ENGINEERING & CONSULTING, INC.  
 2428 OLD NATCHEZ TRACE TRL.  
 CAMDEN, TN, 38320  
 PH 941-380-1574

PHONE (573)-744-5211  
 FAX (573)-744-5586  
 COMMERCIAL  
 www.quakerwindows.com

Scale: NONE  
 Sheet #: 5 of 5

Drawn By: Bud  
 Date: 07-10-2023

504 Highway 63 South  
 Freeburg, MO 65035  
 drafting@quakerwindows.com