

ES.WINDOWS ES-P300 FIXED WINDOW - L.M.I.

GENERAL NOTES:

- THIS PRODUCT HAS BEEN DESIGNED AND TESTED TO COMPLY WITH THE REQUIREMENTS OF THE 7TH EDITION OF FLORIDA BUILDING CODE 2020/ 8TH EDITION OF FLORIDA BUILDING CODE 2023 INCLUDING HIGH VELOCITY HURRICANE ZONE (HVHZ).

- WINDOWS ARE RATED FOR LARGE MISSILE IMPACT. IMPACT SHUTTERS ARE NOT REQUIRED.

- THESE WINDOWS ARE APPROVED FOR AIR AND WATER INFILTRATION.

- ANCHORS SHALL BE AS LISTED, SPACED AS SHOWN ON DETAILS. ANCHORS EMBEDMENT TO BASE MATERIAL SHALL BE BEYOND WALL DRESSING OR STUCCO.

- ANCHORING OR LOADING CONDITIONS NOT SHOWN IN THESE DETAILS ARE NOT PART OF THIS APPROVAL.

- MATERIALS INCLUDING BUT NOT LIMITED TO STEEL/ METAL SCREWS THAT COME INTO CONTACT WITH OTHER DISSIMILAR MATERIALS SHALL MEET THE REQUIREMENTS OF THE 7TH EDITION OF FLORIDA BUILDING CODE 2020/ 8TH EDITION OF FLORIDA BUILDING CODE 2023 SECTION AS APPLICABLE.

- METAL STRUCTURES BY OTHERS TO BE DESIGNED TO SUPPORT THE LOADS IMPOSED BY THIS GLAZING SYSTEM AND TO TRANSFER SUCH LOADS TO THE BUILDING MAIN STRUCTURE.

- ULTIMATE LOAD OBTAINED FROM ASCE 7-16/ ASCE 7-22, MULTIPLY BY 0.6 SHALL BE LESS THAN OR EQUAL TO MAX. DESIGN LOAD IN THIS DOCUMENT. THE DESIGN LOADS SHOWN IN THIS DOCUMENT ARE ALLOWABLE DESIGN LOADS.

- SEALANT:
ALL FRAME CORNERS, JOINTS, MULLION SEAMS AND PERIMETER GLAZING BEAD TO FRAME INSTALLATION FASTENERS SEALED WITH SILICONE SEALANT.

- MANUFACTURER'S LABEL SHALL BE LOCATED ON A READILY VISIBLE LOCATION IN ACCORDANCE WITH SECTION 1709.9.3 OF FLORIDA BUILDING CODE LABELING TO COMPLY WITH SECTION 1709.9.2.

USE CHARTS AS FOLLOWS.

STEP 1: DETERMINE DESIGN WIND LOAD REQUIREMENTS BASED ON WIND VELOCITY, BLDG. HEIGHT, WIND ZONE USING APPLICABLE ASCE 7-16/ ASCE 7-22 STANDARD OR WIND TUNNEL REPORTS.

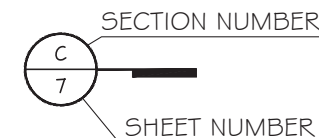
STEP 2: SEE SHEET E1 TO E3 FOR APPROVED TYPICAL ELEVATION #CONFIGURATION. GLASS OPTION AND DESIGN LOAD SEE SHEET G1

STEP 3: ANCHOR TYPE SEE SHEET A1 TO A3. ANCHOR SPACING SEE SHEET C1 TO C3.

STEP 4: THE LOWEST VALUE RESULTING FROM STEPS 2 & 3 THAT EXCEED THE DESIGN WIND PRESSURES DETERMINED THRU STEP 1 SHALL APPLY TO ENTIRE SYSTEM.

ABBREVIATIONS AND SYMBOLS

- G.B. - GLASS BITE
- D.L.O. - DAYLITE OPENING
- F.H. - FRAME HEIGHT
- F.W. - FRAME WIDTH
- W/ - WITH
- W/O - WITHOUT
- O.C. - ON CENTER



LIMITATIONS OF USE

A- THIS PRODUCT EVALUATION DOCUMENT (P.E.D.) PREPARED BY THIS ENGINEER IS GENERIC AND DOES NOT PROVIDE INFORMATION FOR A SITE SPECIFIC PROJECT; I.E. WHERE THE SITE CONDITIONS DEVIATE FROM THE P.E.D.

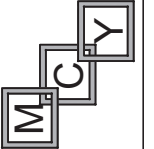
B- CONTRACTOR TO BE RESPONSIBLE FOR THE SELECTION, PURCHASE AND INSTALLATION OF THIS PRODUCT BASED ON THIS PRODUCT EVALUATION PROVIDED HE/SHE DOES NOT DEVIATE FROM THE CONDITIONS DETAILED ON THIS DOCUMENT.

C- THIS PRODUCT EVALUATION DOCUMENT WILL BE CONSIDERED INVALID IF ALTERED BY ANY MEANS.

D- SITE SPECIFIC PROJECTS SHALL BE PREPARED BY A FLORIDA REGISTERED ENGINEER OR ARCHITECT WHICH WILL BECOME THE ENGINEER OF RECORD (E.O.R.) FOR THE PROJECT AND WHO WILL BE RESPONSIBLE FOR THE PROPER USE OF THE P.E.D.

E- THIS P.E.D. SHALL BEAR THE DATE AND ORIGINAL SEAL AND SIGNATURE OF THE PROFESSIONAL ENGINEER OF RECORD THAT PREPARED IT.

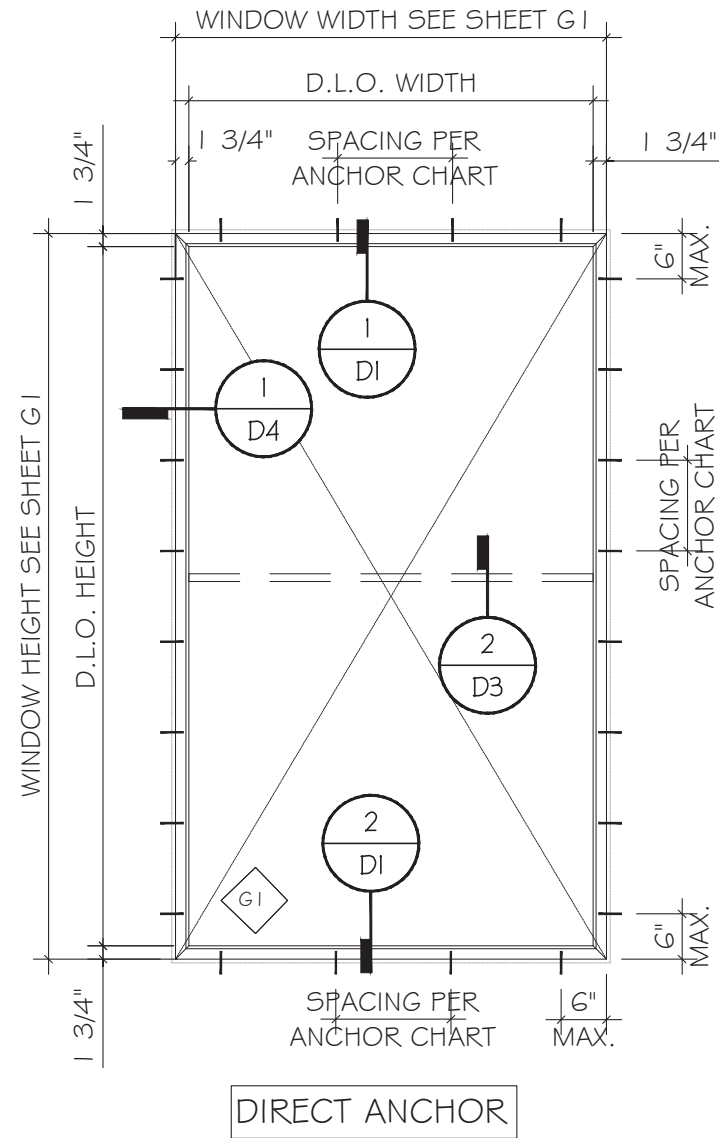
FLORIDA APPROVAL:
FL#40520.2



MCY ENGINEERING, INC.
GLAZING CONSULTANTS
12781 MIRAMAR PKWY, STE. 301
MIRAMAR, FL 33027 P: 305.271.0117
www.MCYEngineering.com mcy@mcyengineering.com

ES-P300 FIXED WINDOW - L.M.I.
E.S.WINDOWS, INC.
10653 NE QUAYBRIDGE CT.
MIAMI, FL 33138
TEL: (305) 624-7775

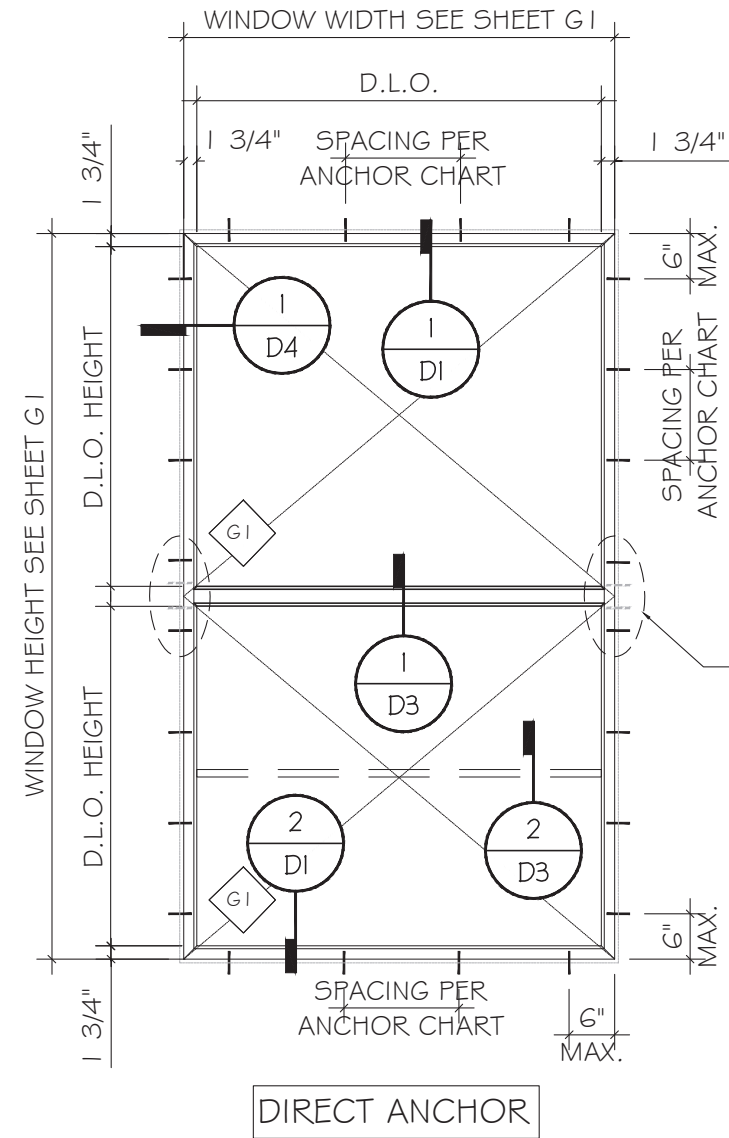
Drawn Date	Scale
11.01.2023	
Drawn By	Update to FBC 2023
JAMES	Description
R2	
Rev. No.	
11.01.2023	
DRAWING NO.	
AD21-49	
COVER	
Sheet No.	
1 OF 17	



TYPICAL WINDOW ELEVATIONS

D.L.O. HEIGHT = WINDOW HEIGHT - 3.5"

D.L.O. WIDTH = WINDOW WIDTH - 3.5"



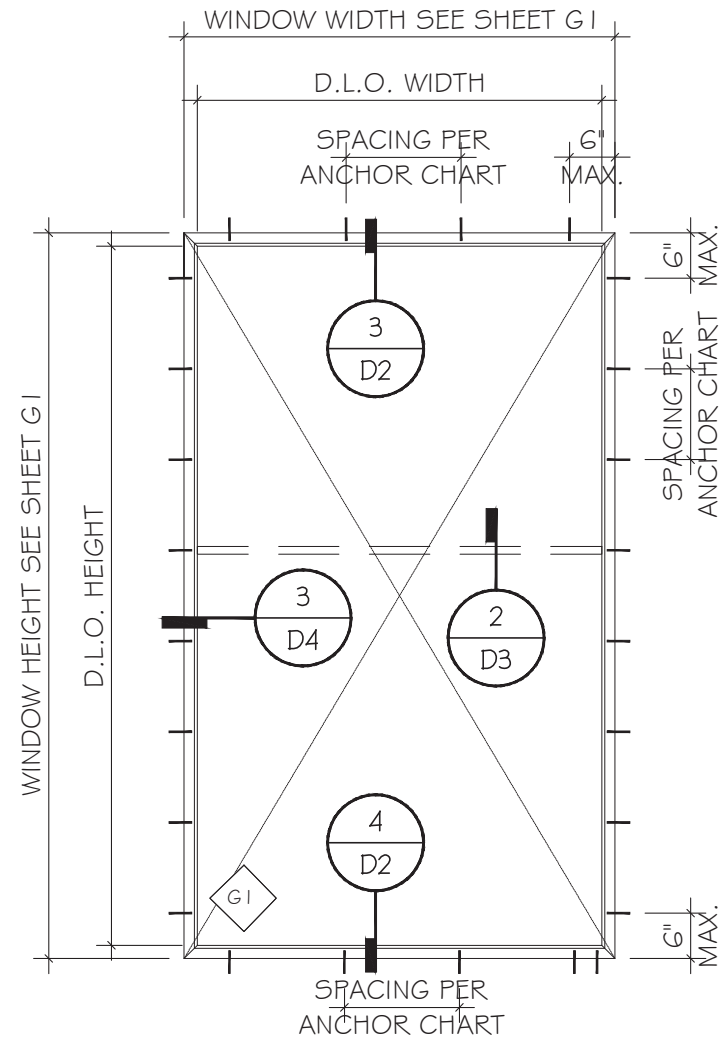
TYPICAL WINDOW ELEVATIONS

ADDITIONAL ANCHOR REQUIRED WHEN WINDOW WIDTH ≥ 48". CLUSTER OF ANCHOR @ 3" O.C.

FLORIDA APPROVAL:
FL#40520.2

YONG WANG, P.E.
FLORIDA REGISTRATION
FL #55983
C.A. No. 6528677
November 16th, 2023

Rev. No.	Date	Drawn By	Description
R2	11.01.2023	JAMES	UPDATE TO FBC 2023
Drawn Date: 11.01.2023 Scale:			
DRAWING NO. AD21-49			
Sheet No. E1			
2 OF 17			

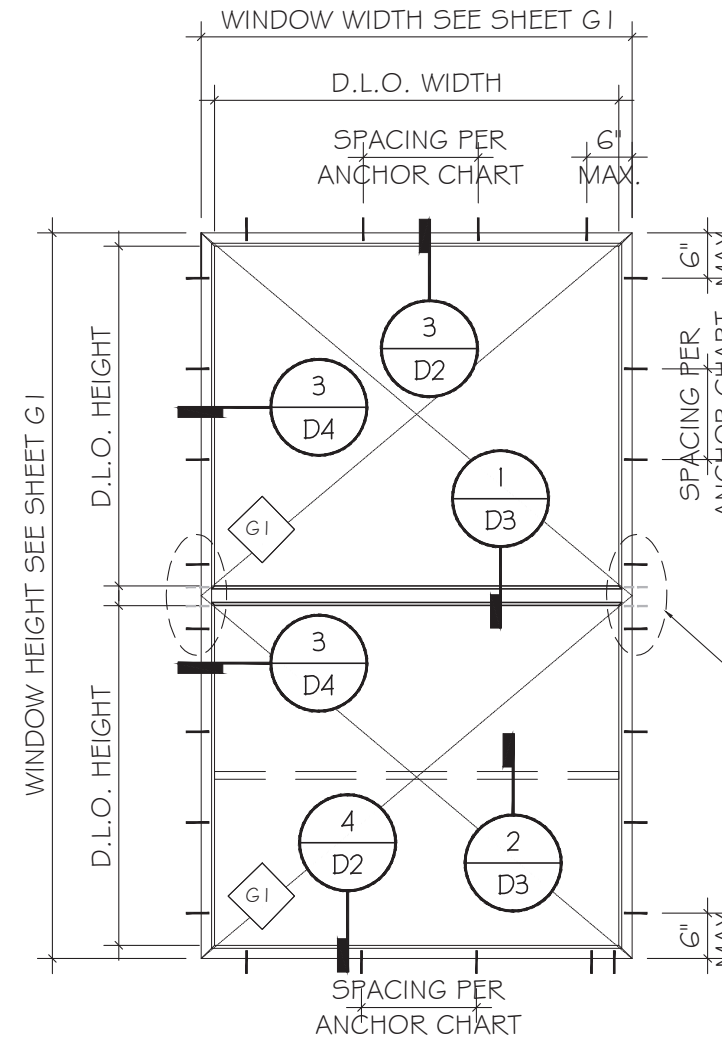


ANCHOR WITH STRAP

TYPICAL WINDOW ELEVATIONS

D.L.O. HEIGHT = WINDOW HEIGHT - 3.5"

D.L.O. WIDTH = WINDOW WIDTH - 3.5"



ANCHOR WITH STRAP

TYPICAL WINDOW ELEVATIONS

ADDITIONAL ANCHOR REQUIRED	
ANCHOR TYPE	WINDOW WIDTH
D	≥ 48"
E & F	≥ 54"

CLUSTER OF ANCHOR @ 4" O.C.

FLORIDA APPROVAL:
FL#40520.2

YONG WANG, P.E.
FLORIDA REGISTRATION
FL #55983
C.A. No. 6528677

November 16th, 2023

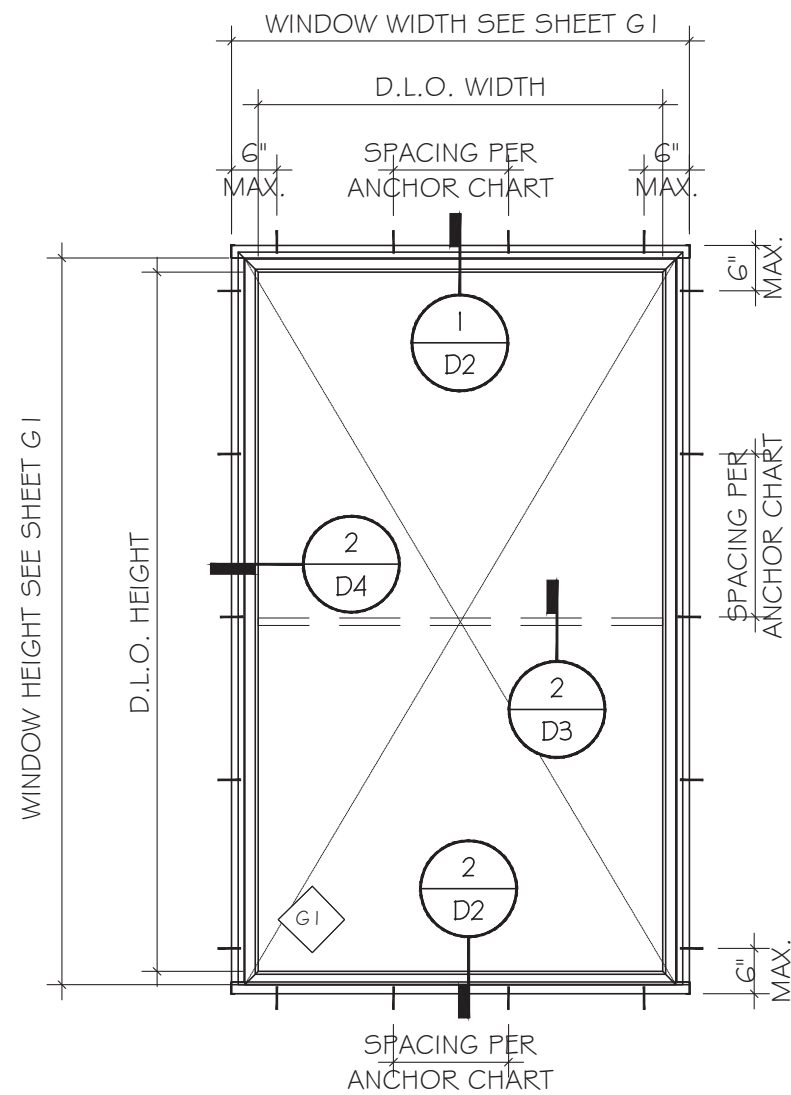
Rev. No.	Date	Drawn By	Description
R2	11.01.2023	JAMES	UPDATE TO FBC 2023

Drawn Date: 11.01.2023 Scale: _____

DRAWING NO. AD21-49

Sheet No. E2

3 OF 17

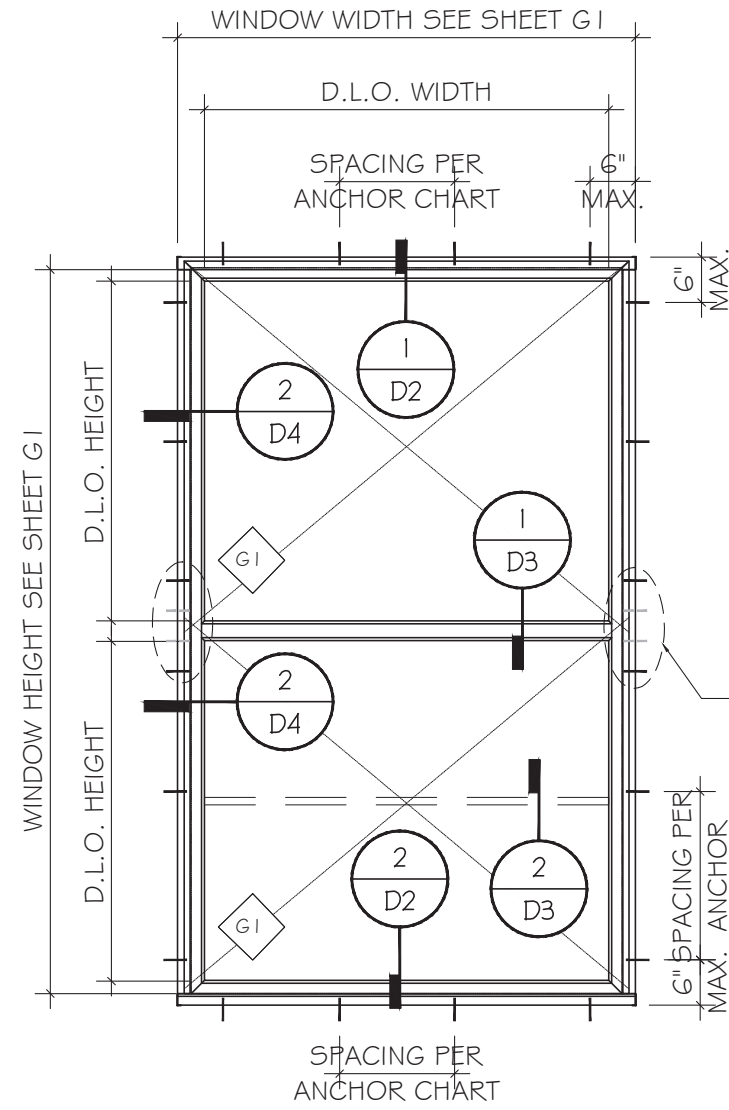


ANCHOR WITH RECEPTOR

TYPICAL WINDOW ELEVATIONS

D.L.O. HEIGHT = WINDOW HEIGHT - 4.44"

D.L.O. WIDTH = WINDOW WIDTH - 5.38"

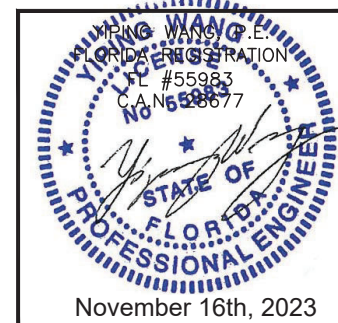


ANCHOR WITH RECEPTOR

TYPICAL WINDOW ELEVATIONS

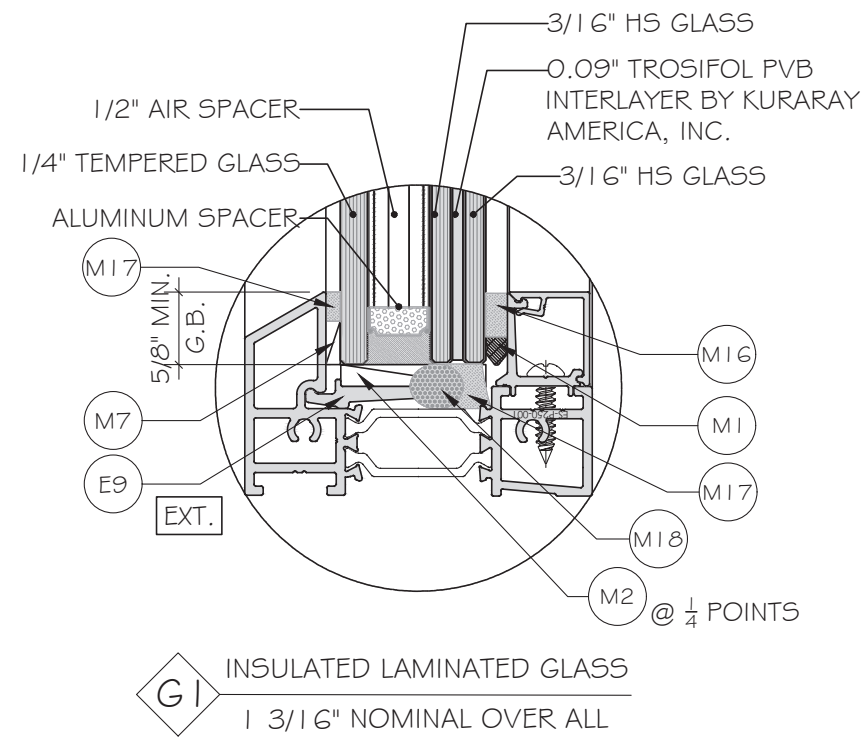
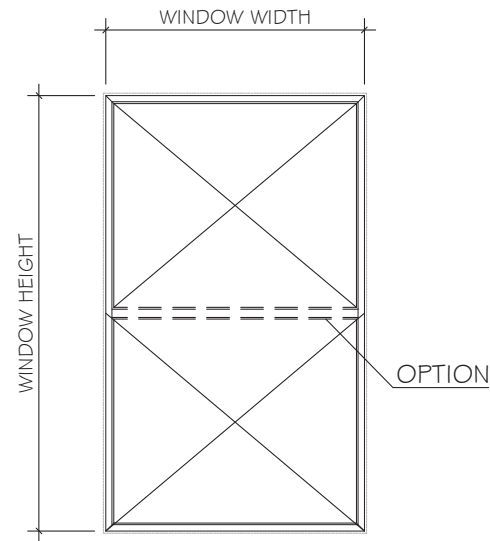
ADDITIONAL ANCHOR REQUIRED WHEN WINDOW WIDTH ≥ 48". CLUSTER OF ANCHOR @ 4" O.C.

FLORIDA APPROVAL:
FL#40520.2



Rev. No.	Date	Drawn By	Description
R2	11.01.2023	JAMES	UPDATE TO FBC 2023
<p>Drawn Date: 11.01.2023 Scale: _____</p> <p>DRAWING NO. AD21-49</p> <p>Sheet No. E3 3 OF 17</p>			

FIXED WINDOW ALLOWABLE PRESSURE			
WINDOW HEIGHT	WINDOW WIDTH	ALLOWABLE LOAD	
		PSF EXT (+)	PSF INT (-)
72.0	36.0	80.0	90.0
	42.0		
	48.0		
	54.0		
	60.0		
	66.0		
78.0	36.0	80.0	90.0
	42.0		
	48.0		
	54.0		
	60.0		
	66.0		
84.0	36.0	80.0	90.0
	42.0		
	48.0		
	54.0		
	60.0		
	66.0		
90.0	36.0	80.0	90.0
	42.0		
	48.0		
	54.0		
	60.0		
	66.0		
96.0	36.0	80.0	90.0
	42.0		
	48.0		
	54.0		
	57.0		



NOTE:
GLASS COMPLIES WITH ASTM E1300-09
(3 SEC. GUSTS).

FLORIDA APPROVAL:
FL#40520.2

YONG WANG, P.E.
FLORIDA REGISTRATION
FL #55983
CA#6528677
November 16th, 2023

MCY ENGINEERING, INC.
GLAZING CONSULTANTS
12781 MIRAMAR PKWY, STE. 301
MIRAMAR, FL 33027 P: 305.271.0117
www.MCYEngineering.com mcy@mcyengineering.com

ES-P300 FIXED WINDOW - L.M.I.
E.S.WINDOWS, INC.
10653 NE QUAYBRIDGE CT.
MIAMI, FL 33138
TEL: (305) 624-7775

Rev. No.	Date	Drawn By	Description
R2	11.01.2023	JAMES	UPDATE TO FBC 2023

Drawn Date: 11.01.2023 Scale: _____

DRAWING NO. **AD21-49**

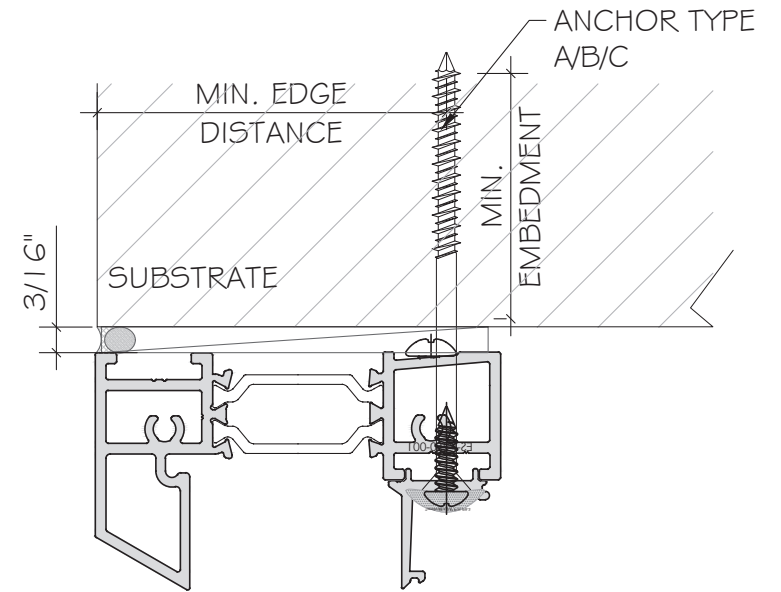
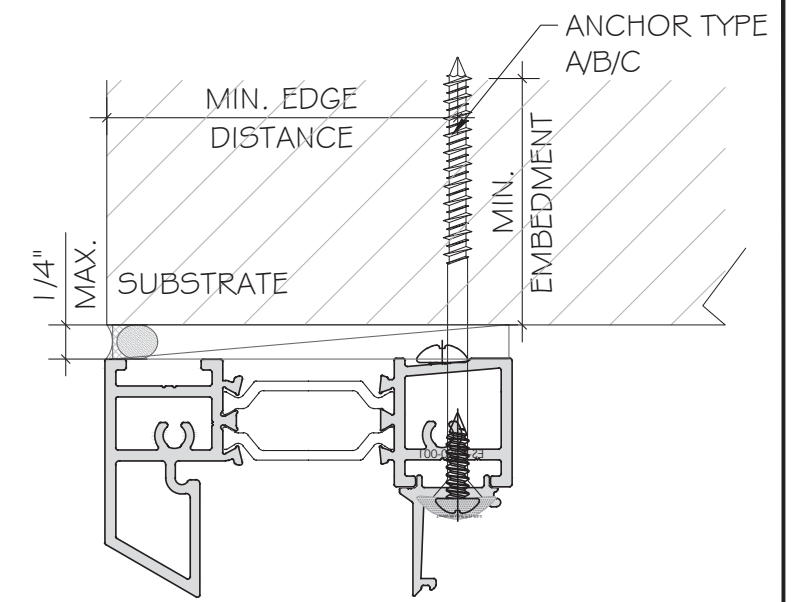
G1

Sheet No. **5 OF 17**

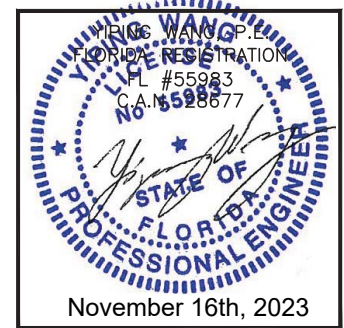
ANCHOR CHART FOR ANCHOR TYPE "A" "B" "C"

WINDOW HEIGHT INCH	WINDOW WIDTH INCH	ALLOWABLE LOAD (EXT+)PSF	ALLOWABLE LOAD (INT-)PSF	ANCHOR SPACING (INCH)	
				1/4" SHIM	
				TYPE A / B / C INTO WOOD/ CONCRETE/ METAL	TYPE B / C INTO CONCRETE / METAL
72.0	36.0	80.0	90.0	14	16
	42.0	80.0	90.0	12	16
	48.0	80.0	90.0	10	16
	54.0	80.0	90.0	9	16
	60.0	76.0	86.0	9	16
	66.0	69.0	78.0	9	16
	72.0	53.0	60.0	10	16
78.0	36.0	80.0	90.0	14	16
	42.0	80.0	90.0	12	16
	48.0	80.0	90.0	10	16
	54.0	80.0	90.0	9	16
	60.0	76.0	86.0	9	16
	66.0	63.0	71.0	9	16
84.0	36.0	80.0	90.0	14	16
	42.0	80.0	90.0	12	16
	48.0	80.0	90.0	10	16
	54.0	80.0	90.0	9	16
	60.0	76.0	86.0	9	16
90.0	36.0	80.0	90.0	14	16
	42.0	80.0	90.0	12	16
	48.0	80.0	90.0	10	16
	54.0	80.0	90.0	9	16
	60.0	73.0	82.0	9	16
96.0	36.0	80.0	90.0	14	16
	42.0	80.0	90.0	12	16
	48.0	80.0	90.0	10	16
	54.0	80.0	90.0	9	16
	57.0	80.0	90.0	9	16

SEE SHEET A1 FOR ANCHOR TYPES



FLORIDA APPROVAL:
FL#40520.2



MCY ENGINEERING, INC.
GLAZING CONSULTANTS
12781 MIRAMAR PKWY, STE. 301
MIRAMAR, FL 33027 P: 305.271.0117
www.MCYEngineering.com mcy@mcyengineering.com

ES-P300 FIXED WINDOW - L.M.I.
E.S.WINDOWS, INC.
10653 NE QUAYBRIDGE CT.
MIAMI, FL 33138
TEL. (305) 624-7775

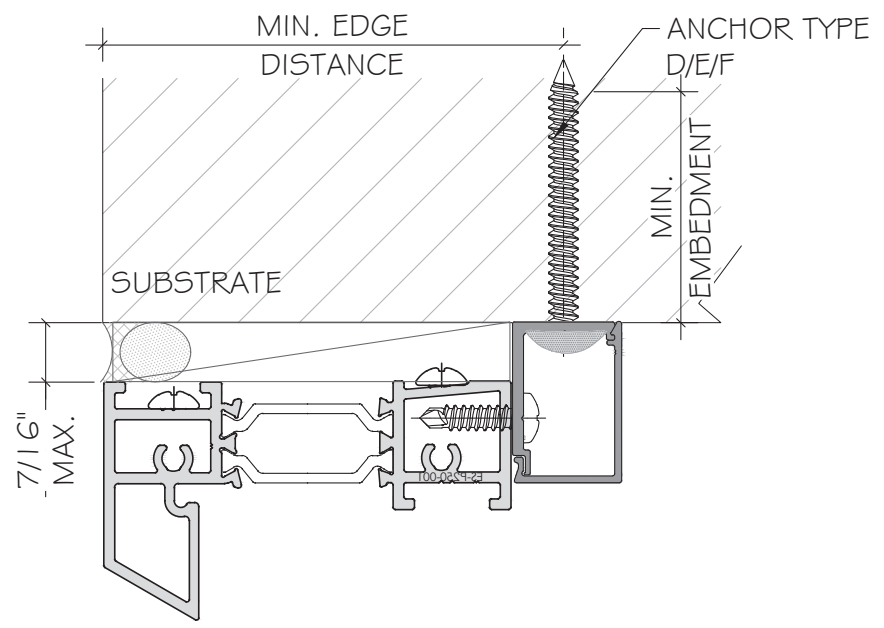
Rev. No.	Date	Drawn By	Description
R2	11.01.2023	JAMES	UPDATE TO FBC 2023

Drawn Date: 11.01.2023
Scale:
DRAWING NO.: AD21-49
Sheet No.: 6 OF 17

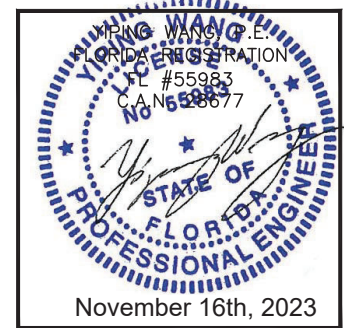
ANCHOR CHART FOR ANCHOR TYPE "D" "E" "F"

WINDOW HEIGHT INCH	WINDOW WIDTH INCH	ALLOWABLE LOAD (EXT+)PSF	ALLOWABLE LOAD (INT-)PSF	ANCHOR SPACING (INCH)		
				TYPE D INTO WOOD	TYPE E INTO CONCRETE	TYPE F INTO METAL
72.0	36.0	80.0	90.0	12	16	16
	42.0	80.0	90.0	10	14	16
	48.0	80.0	90.0	9	13	15
	54.0	80.0	90.0	8	11	13
	60.0	76.0	86.0	7	11	12
	66.0	69.0	78.0	7	11	12
	72.0	53.0	60.0	9	13	15
78.0	36.0	80.0	90.0	12	16	16
	42.0	80.0	90.0	10	14	16
	48.0	80.0	90.0	9	13	15
	54.0	80.0	90.0	8	11	13
	60.0	76.0	86.0	7	11	12
	66.0	63.0	71.0	8	12	14
84.0	36.0	80.0	90.0	12	16	16
	42.0	80.0	90.0	10	14	16
	48.0	80.0	90.0	9	13	15
	54.0	80.0	90.0	8	11	13
	60.0	76.0	86.0	7	11	12
90.0	36.0	80.0	90.0	12	16	16
	42.0	80.0	90.0	10	14	16
	48.0	80.0	90.0	9	13	15
	54.0	80.0	90.0	8	11	13
	60.0	73.0	82.0	8	11	13
96.0	36.0	80.0	90.0	12	16	16
	42.0	80.0	90.0	10	14	16
	48.0	80.0	90.0	9	13	15
	54.0	80.0	90.0	8	11	13
	57.0	80.0	90.0	7	11	12

SEE SHEET A2 FOR ANCHOR TYPES



FLORIDA APPROVAL:
FL#40520.2



MCY ENGINEERING, INC.
GLAZING CONSULTANTS
12781 MIRAMAR PKWY, STE. 301
MIRAMAR, FL 33027 P: 305.271.0117
www.MCYEngineering.com mcy@mcyengineering.com

ES-P300 FIXED WINDOW - L.M.I.
E.S.WINDOWS, INC.
10653 NE QUAYBRIDGE CT.
MIAMI, FL 33138
TEL: (305) 624-7775

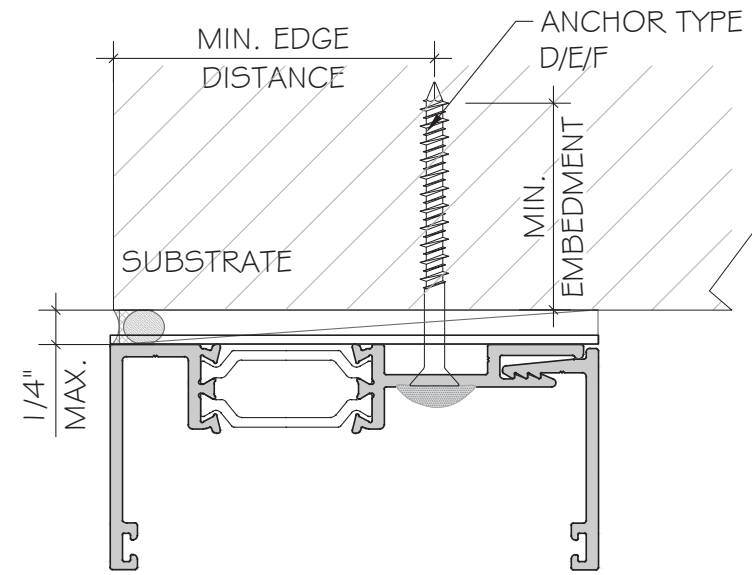
Rev. No.	Date	Drawn By	Description
R2	11.01.2023	JAMES	UPDATE TO FBC 2023

Drawn Date: 11.01.2023
Scale:
DRAWING NO. AD21-49
Sheet No. 7 OF 17

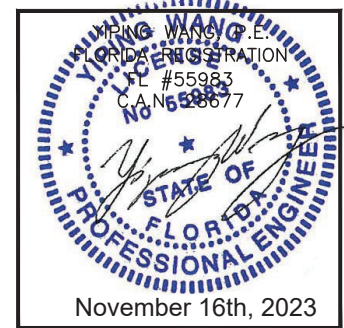
ANCHOR CHART FOR ANCHOR TYPE "D" "E" "F"

WINDOW HEIGHT INCH	WINDOW WIDTH INCH	ALLOWABLE LOAD (EXT+)PSF	ALLOWABLE LOAD (INT-)PSF	ANCHOR SPACING (INCH)		
				TYPE D INTO WOOD	TYPE E INTO CONCRETE	TYPE F INTO METAL
72.0	36.0	80.0	90.0	14	16	16
	42.0	80.0	90.0	12	16	16
	48.0	80.0	90.0	11	16	16
	54.0	80.0	90.0	9	14	16
	60.0	76.0	86.0	9	14	16
	66.0	69.0	78.0	9	14	16
	72.0	53.0	60.0	11	16	16
78.0	36.0	80.0	90.0	14	16	16
	42.0	80.0	90.0	12	16	16
	48.0	80.0	90.0	11	16	16
	54.0	80.0	90.0	9	14	16
	60.0	76.0	86.0	9	14	16
	66.0	63.0	71.0	10	15	16
84.0	36.0	80.0	90.0	14	16	16
	42.0	80.0	90.0	12	16	16
	48.0	80.0	90.0	11	16	16
	54.0	80.0	90.0	9	14	16
	60.0	76.0	86.0	9	14	16
90.0	36.0	80.0	90.0	14	16	16
	42.0	80.0	90.0	12	16	16
	48.0	80.0	90.0	11	16	16
	54.0	80.0	90.0	9	14	16
	60.0	73.0	82.0	9	14	16
96.0	36.0	80.0	90.0	14	16	16
	42.0	80.0	90.0	12	16	16
	48.0	80.0	90.0	11	16	16
	54.0	80.0	90.0	9	14	16
	57.0	80.0	90.0	9	14	16

SEE SHEET A3 FOR ANCHOR TYPES



FLORIDA APPROVAL:
FL#40520.2



MCY ENGINEERING, INC.
GLAZING CONSULTANTS
12781 MIRAMAR PKWY, STE. 301
MIRAMAR, FL 33027 P: 305.271.0117
www.MCYEngineering.com mcy@mcyengineering.com

ES-P300 FIXED WINDOW - L.M.I.
E.S.WINDOWS, INC.
10653 NE QUAYBRIDGE CT.
MIAMI, FL 33138
TEL. (305) 624-7775

Rev. No.	Date	Drawn By	Description
R2	11.01.2023	JAMES	UPDATE TO FBC 2023

Drawn Date: 11.01.2023 Scale:
DRAWING NO. AD21-49
Sheet No. 8 OF 17

TYPICAL ANCHOR TYPES:

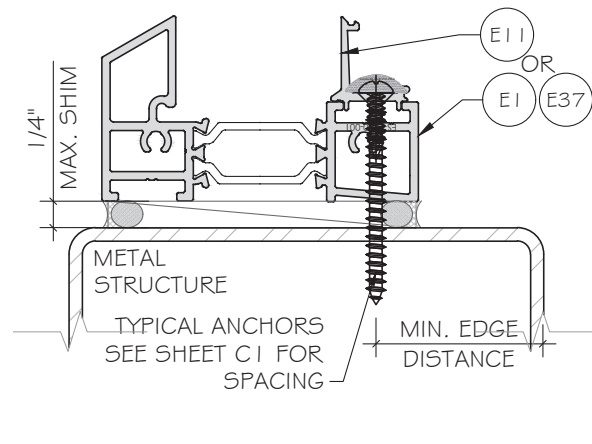
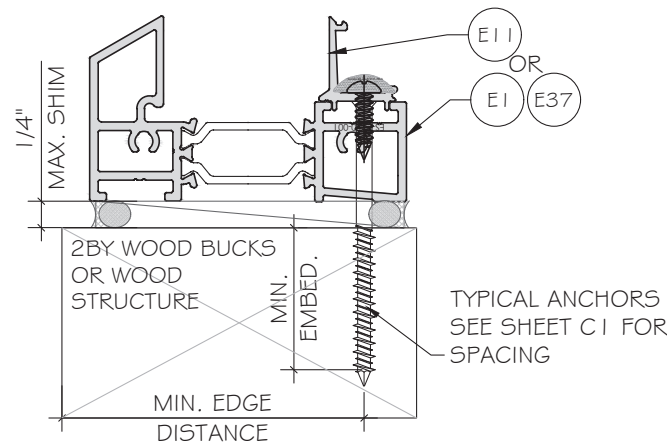
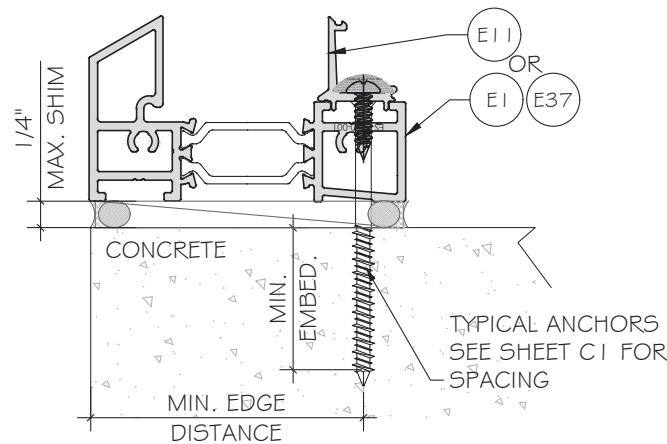
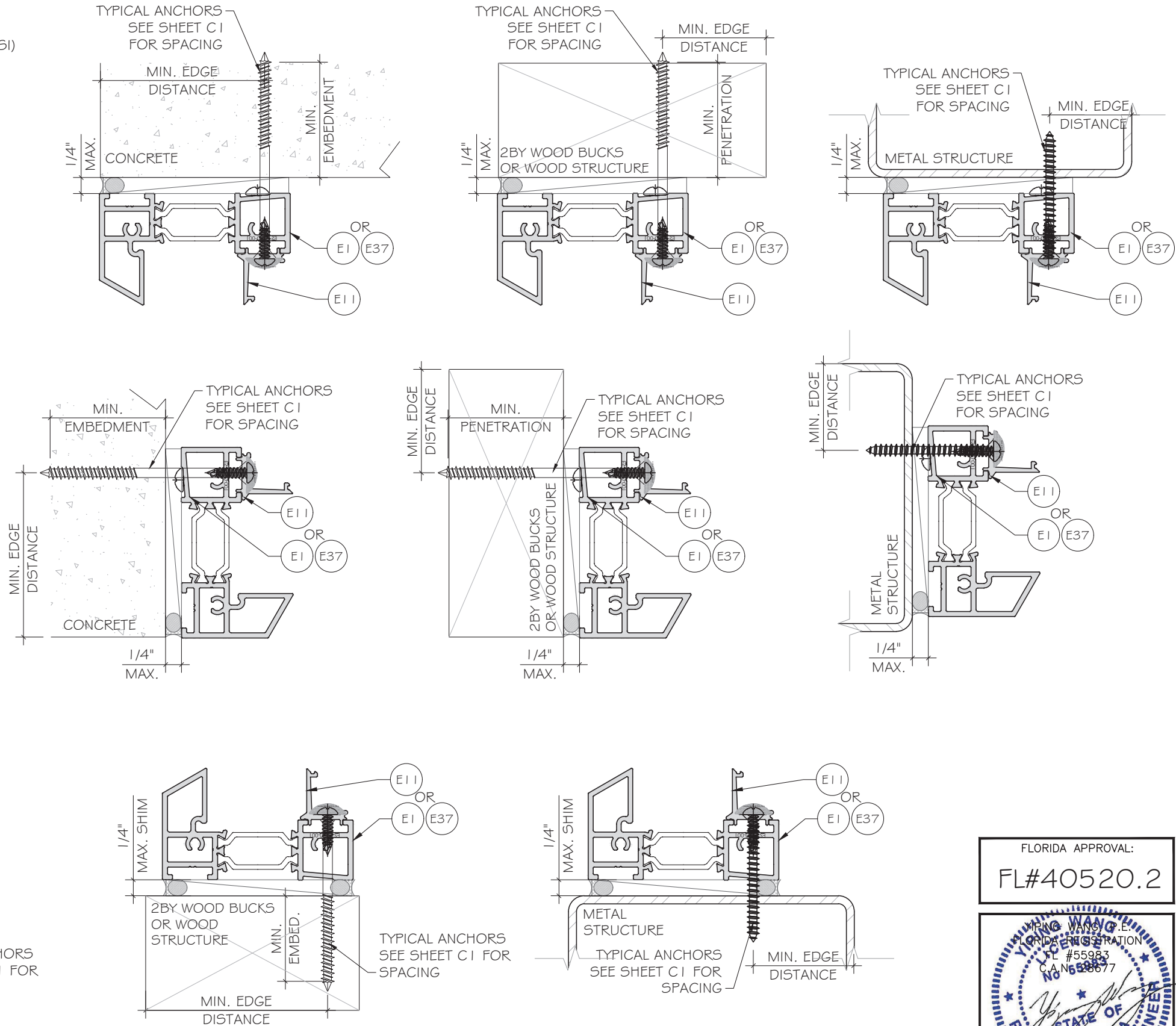
ANCHOR TYPE 'A' - 3/16" DIA. ULTRACON BY 'DEWALT'(Fu=164 KSI, Fy=117 KSI) INTO 2BY WOOD BUCKS (SG=0.55 MIN.) WITH 1 1/2" MIN. PENETRATION. OR THRU 1BY WOOD BUCK INTO CONCRETE WITH MIN. 1 3/4" EMBEDMENT.

ANCHOR TYPE 'B' - 3/16" DIA. ULTRACON BY 'DEWALT'(Fu=164 KSI, Fy=117 KSI) DIRECTLY INTO CONCRETE $f_c=3KSI$ MIN. W/1 3/4" MIN. EMBEDMENT

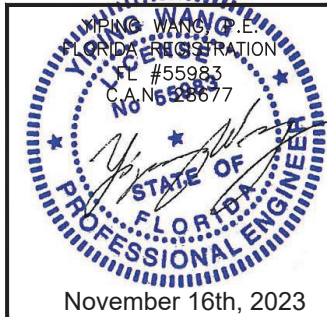
ANCHOR TYPE 'C' - #10 - SELF DRILLING SCREW GRADE 5 (Fu=120KSI, Fy=92KSI) INTO F.B.C. APPROVED MULLIONS OR INTO METAL STRUCTURES. (3) THREADS MIN. PENETRATION BEYOND METAL SUBSTRATE

ALUMINUM: 1/8" THK. MIN. (6063-T5, MIN)
 STEEL: 1/8" THK. MIN. (Fy=36KSI MIN)
 STEEL: 1/8" THK. STL STRUCTURE
 (STEEL IN CONTACT WITH ALUMINUM TO BE PLATED OR PAINTED)

TYPICAL EDGE DISTANCE
 INTO CONCRETE = 2 1/2" MIN.
 INTO WOOD = 1" MIN.
 INTO METAL STRUCTURE = 1/2" MIN.



FLORIDA APPROVAL:
FL#40520.2



MCY ENGINEERING, INC.
 GLAZING CONSULTANTS
 12781 MIRAMAR PKWY, STE. 301
 MIRAMAR, FL 33027 P: 305.271.0117
 www.MCYEngineering.com mcy@mcyengineering.com

ES-P300 FIXED WINDOW - L.M.I.
 E.S.WINDOWS, INC.
 10653 NE QUAYBRIDGE CT.
 MIAMI, FL 33138
 TEL. (305) 624-7775

Drawn Date	Scale
11.01.2023	
Drawn By	Description
JAMES	UPDATE TO FBC 2023
Date	
11.01.2023	
Rev. No.	
R2	
DRAWING NO.	
AD21-49	
Sheet No.	
9 OF 17	

TYPICAL ANCHOR TYPES:

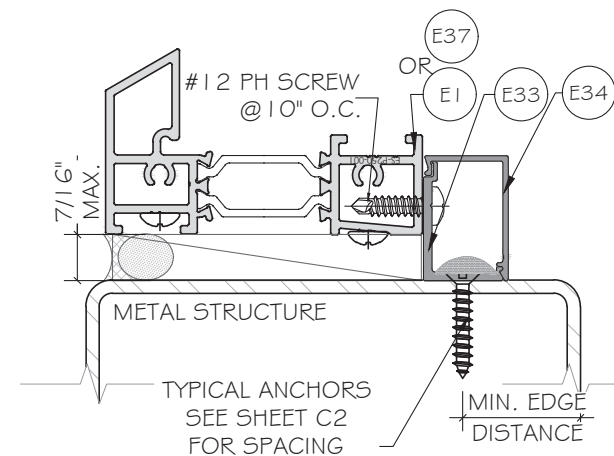
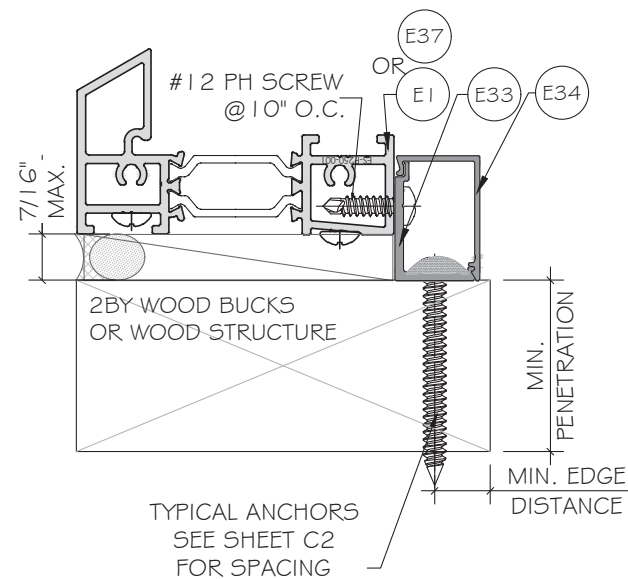
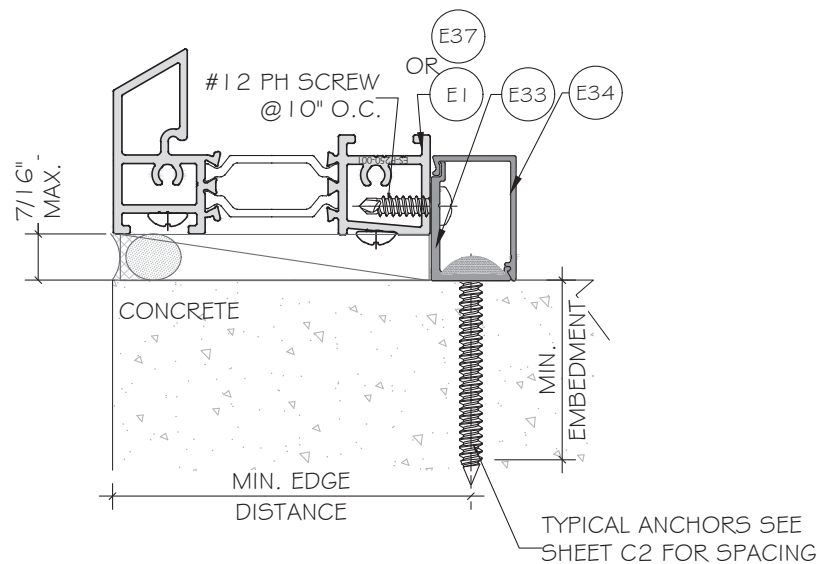
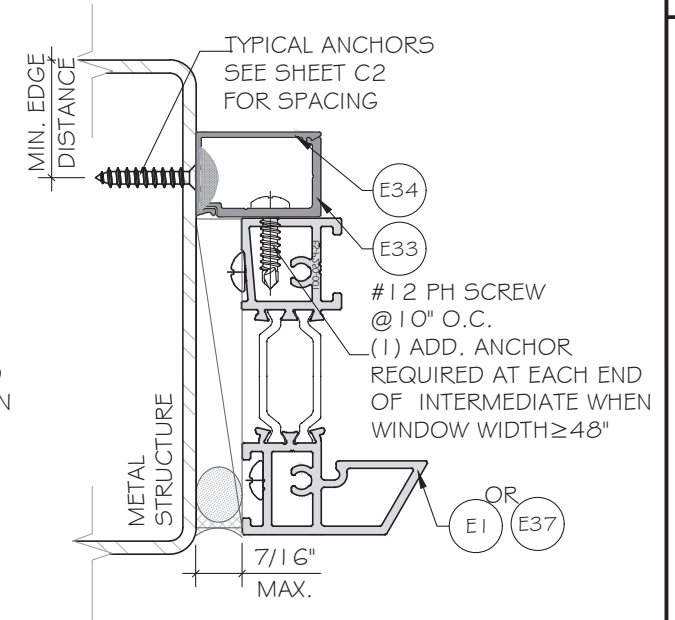
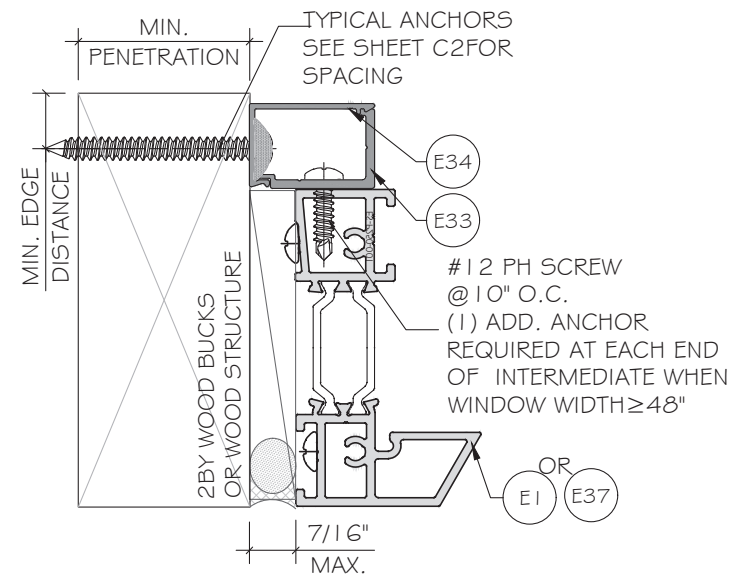
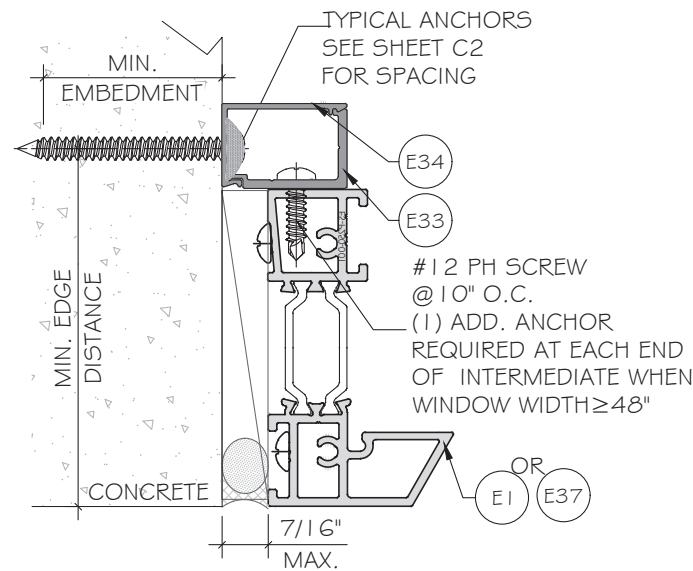
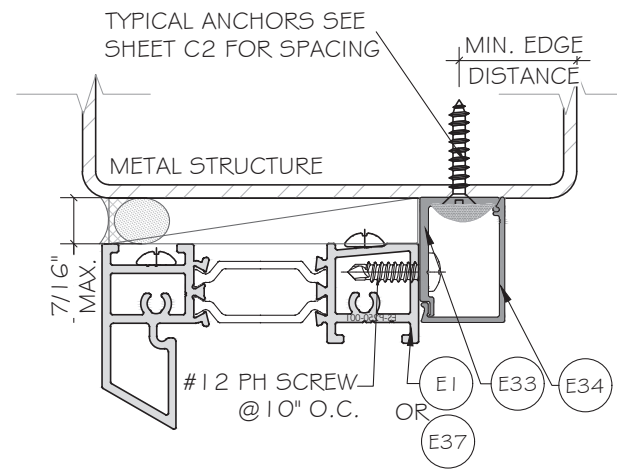
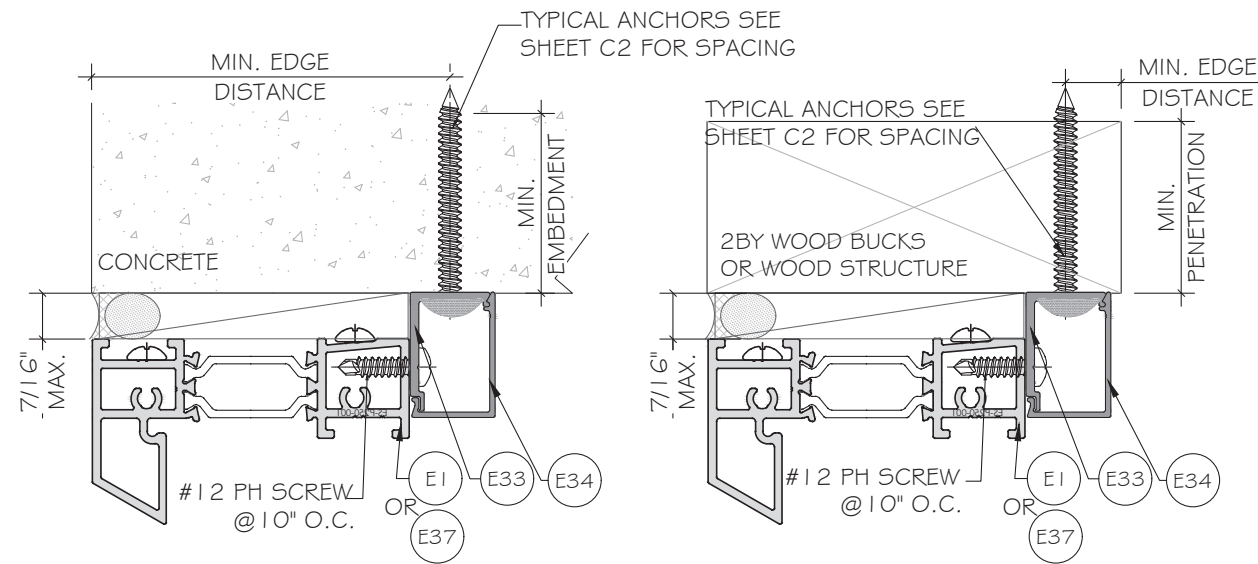
ANCHOR TYPE 'D' - 1/4" DIA. ULTRACON+ BY 'DEWALT'(Fu=164KSI, Fy=148KSI) INTO 2BY WOOD BUCKS (SG=0.55 MIN.) WITH 1 1/2" MIN. PENETRATION. OR THRU 1BY WOOD BUCK INTO CONCRETE

ANCHOR TYPE 'E' - 1/4" DIA. ULTRACON+ BY 'DEWALT'(Fu=164KSI, Fy=148KSI) DIRECTLY INTO CONCRETE Fc=3KSI MIN. W/1 3/4" MIN. EMBEDMENT

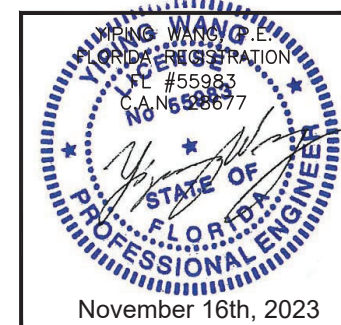
ANCHOR TYPE 'F' - 1/4" DIA. SEFL-DRILLING SCREWS, GRADE 5 (Fu=120KSI, Fy=92KSI) INTO METAL STRUCTURES. (3) THREADS MIN. PENETRATION BEYOND METAL SUBSTRATE

ALUMINUM: 1/8" THK. MIN. (6063-T5, MIN)
 STEEL: 1/8" THK. MIN. (Fy=36KSI MIN)
 STEEL: 12GA STL STRUCTURE
 (STEEL IN CONTACT WITH ALUMINUM TO BE PLATED OR PAINTED)

TYPICAL EDGE DISTANCE
 INTO CONCRETE = 2 1/2" MIN.
 INTO WOOD = 1" MIN.
 INTO METAL STRUCTURE = 1/2" MIN.



FLORIDA APPROVAL:
 FL#40520.2



MCY ENGINEERING, INC.
 GLAZING CONSULTANTS
 12781 MIRAMAR PKWY, STE. 301
 MIRAMAR, FL 33027 P: 305.271.0117
 www.MCYEngineering.com mcy@mcyengineering.com

ES-P300 FIXED WINDOW - L.M.I.
 E.S.WINDOWS, INC.
 10653 NE QUAYBRIDGE CT.
 MIAMI, FL 33138
 TEL. (305) 624-7775

Rev. No.	Date	Drawn By	Description
R2	11.01.2023	JAMES	UPDATE TO FBC 2023
DRAWING NO. AD21-49			
Sheet No. 10 OF 17			

TYPICAL ANCHOR TYPES:

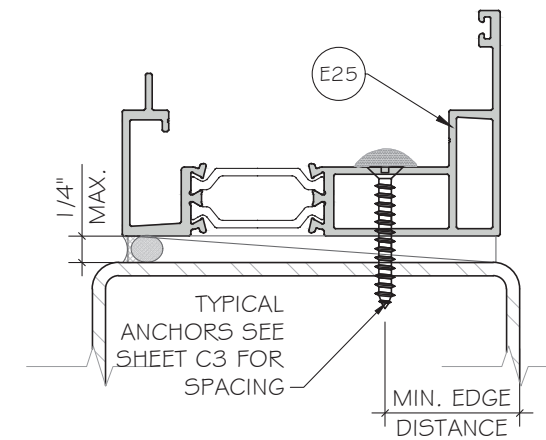
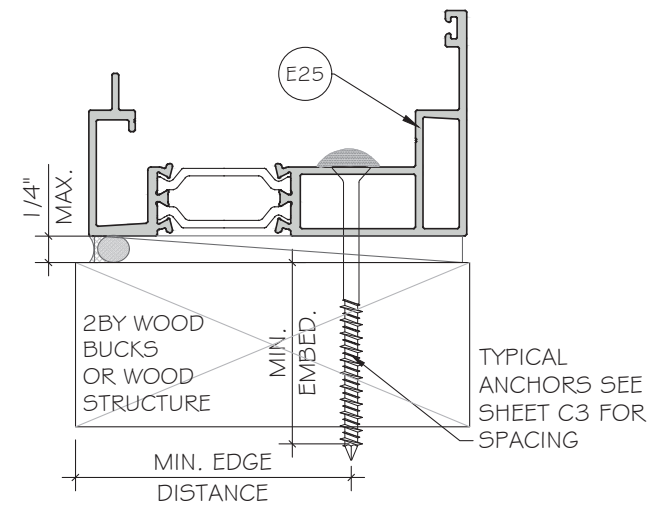
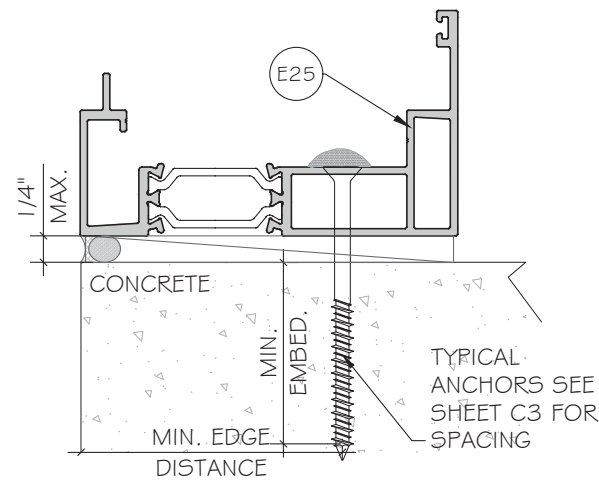
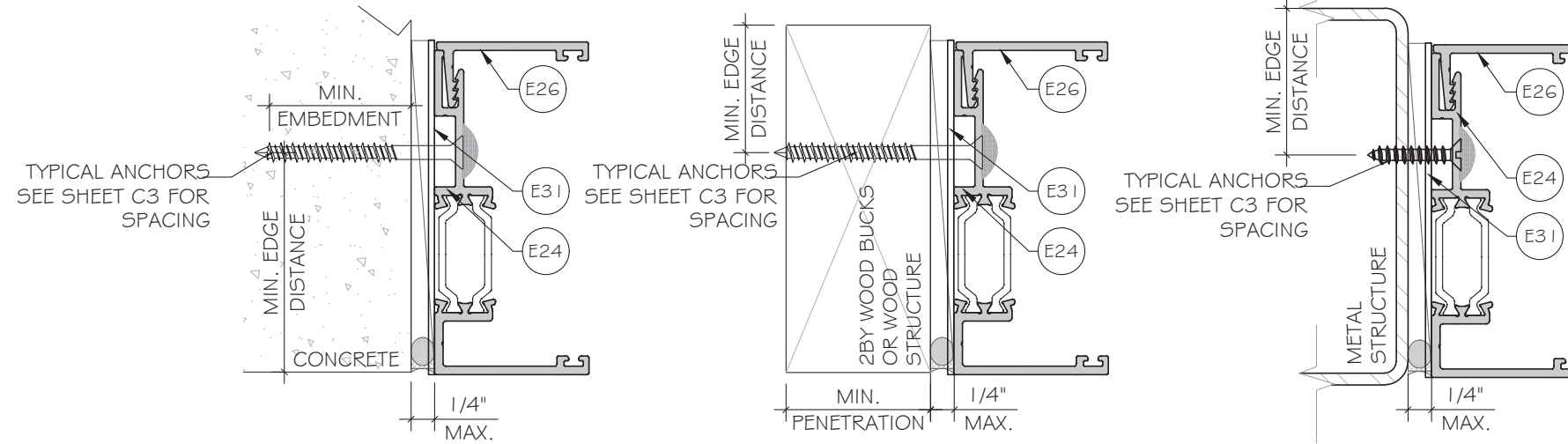
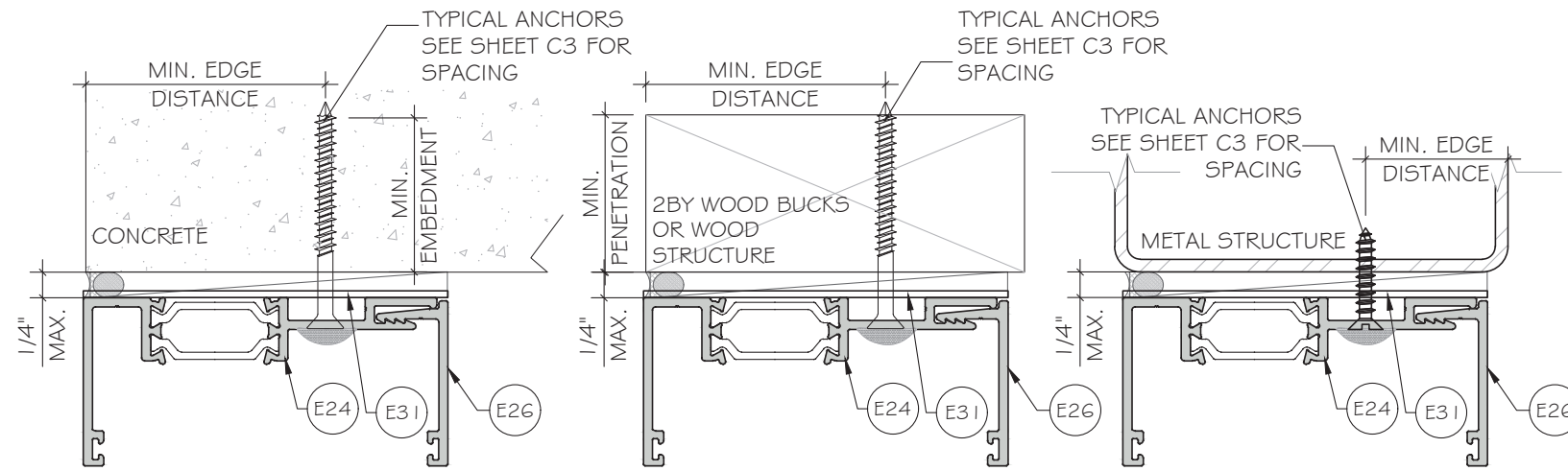
ANCHOR TYPE 'D' - 1/4" DIA. ULTRACON+ BY 'DEWALT'(Fu=164KSI, Fy=148KSI) INTO 2BY WOOD BUCKS (SG=0.55 MIN.) WITH 1 1/2" MIN. PENETRATION. OR THRU 1 BY WOOD BUCK INTO CONCRETE

ANCHOR TYPE 'E' - 1/4" DIA. ULTRACON+ BY 'DEWALT'(Fu=164KSI, Fy=148KSI) DIRECTLY INTO CONCRETE (fc=3KSI MIN. W/1 3/4" MIN. EMBEDMENT

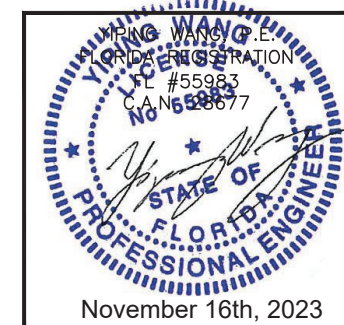
ANCHOR TYPE 'F' - 1/4" DIA. SEFL-DRILLING SCREWS, GRADE 5 (Fu=120KSI, Fy=92KSI) INTO METAL STRUCTURES. (3) THREADS MIN. PENETRATION BEYOND METAL SUBSTRATE

ALUMINUM: 1/8" THK. MIN. (6063-T5, MIN)
 STEEL: 1/8" THK. MIN. (Fy=36KSI MIN)
 STEEL: 12GA STL STRUCTURE
 (STEEL IN CONTACT WITH ALUMINUM TO BE PLATED OR PAINTED)

TYPICAL EDGE DISTANCE
 INTO CONCRETE = 2 1/2" MIN.
 INTO WOOD = 1" MIN.
 INTO METAL STRUCTURE = 1/2" MIN.



FLORIDA APPROVAL:
FL#40520.2

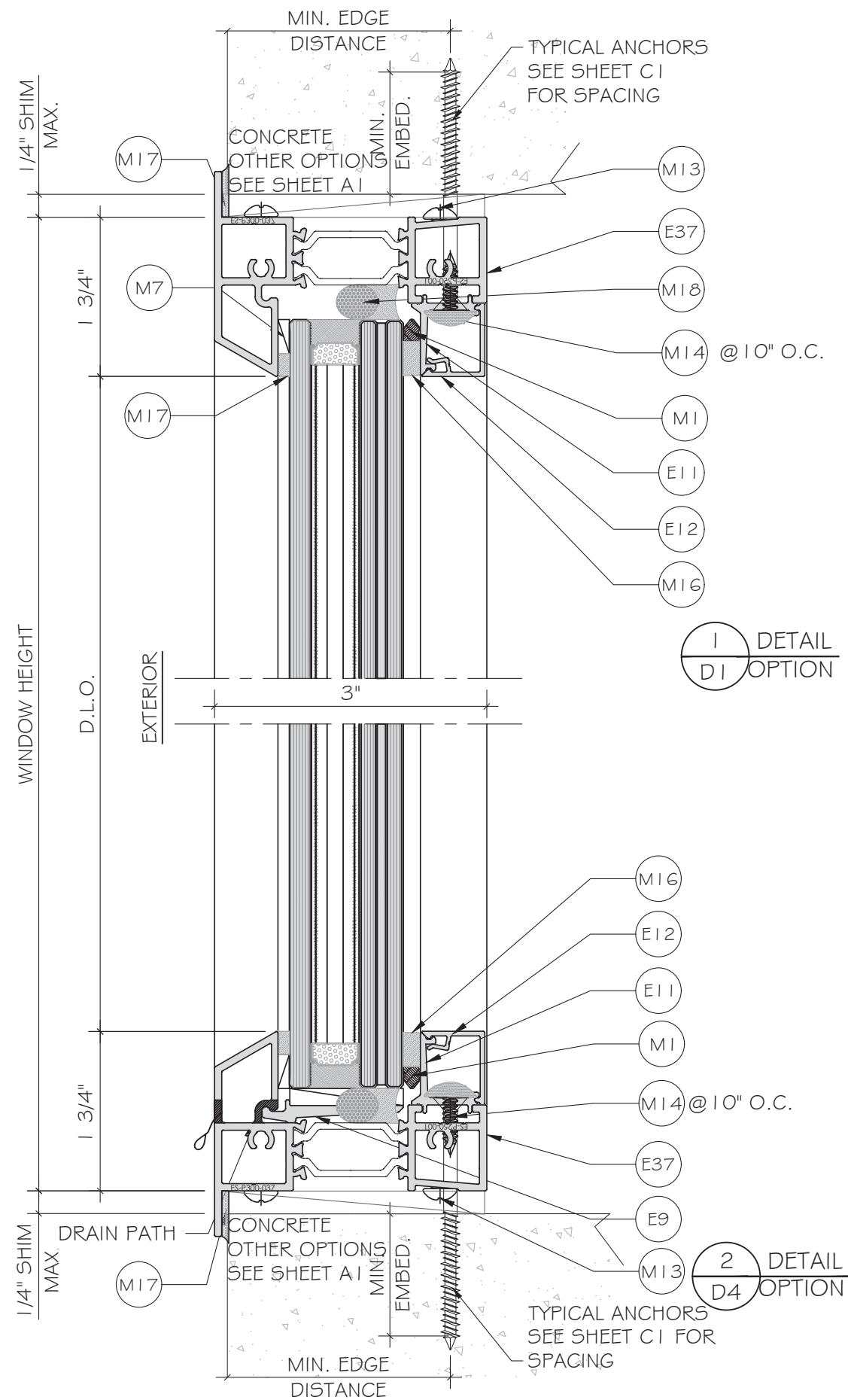
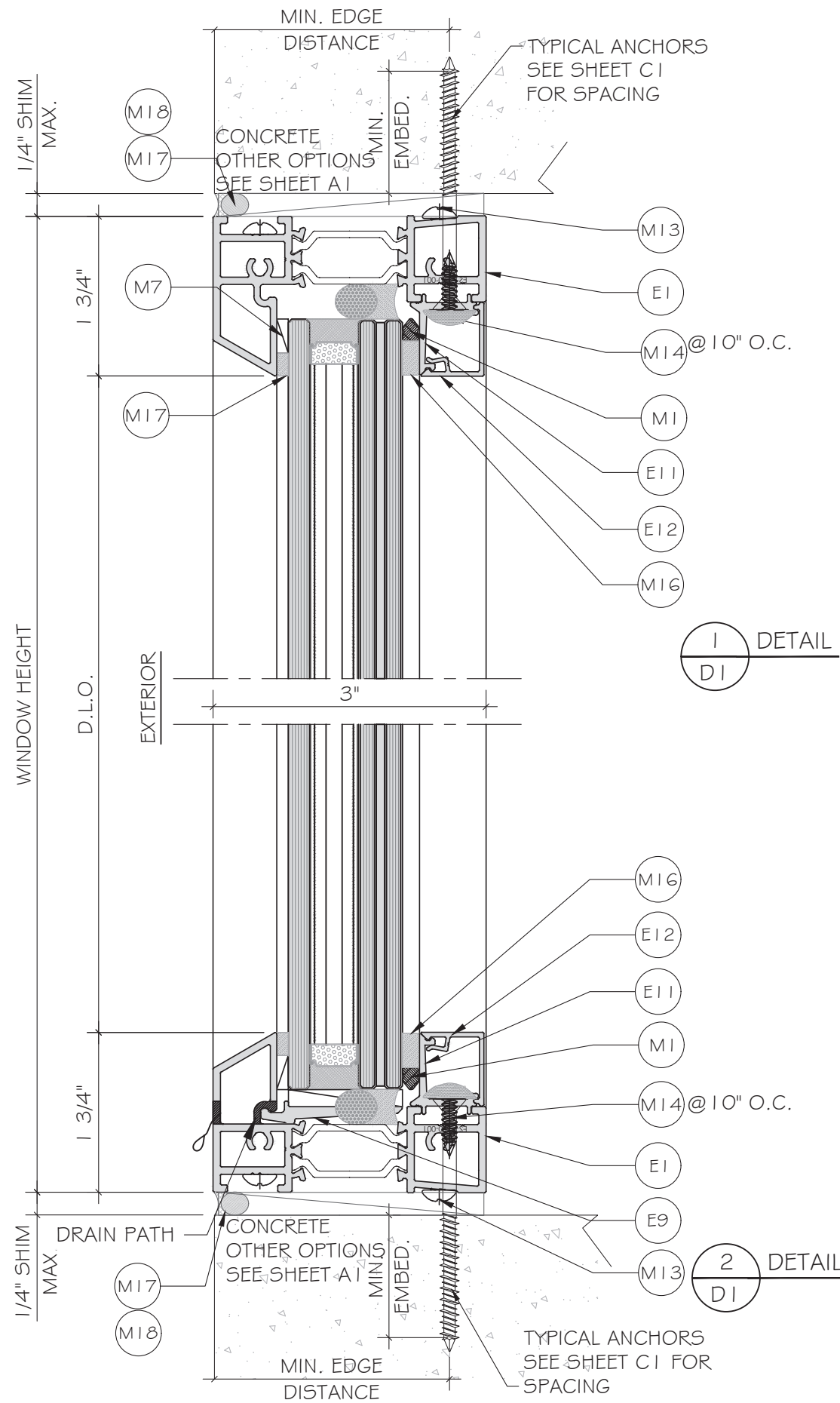


ES-P300 FIXED WINDOW - L.M.I.

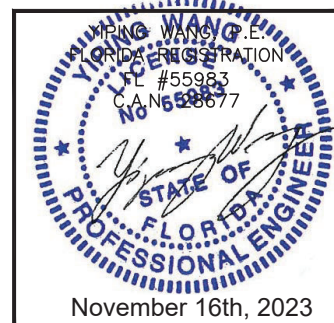
E.S.WINDOWS, INC.
 10653 NE QUAYBRIDGE CT.
 MIAMI, FL 33138
 TEL. (305) 624-7775

MCY ENGINEERING, INC.
 GLAZING CONSULTANTS
 12781 MIRAMAR PKWY, STE. 301
 MIRAMAR, FL 33027 P: 305.271.0117
 www.MCYEngineering.com mcy@mcyengineering.com

Drawn Date	Scale
11.01.2023	
Drawn By	Description
JAMES	UPDATE TO FBC 2023
Date	
11.01.2023	
Rev. No.	
R2	
DRAWING NO.	
AD21-49	
Sheet No.	
A3	
11 OF 17	

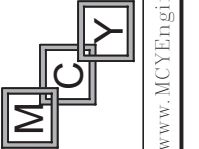


FLORIDA APPROVAL:
FL#40520.2



ES-P300 FIXED WINDOW - L.M.I.

E.S.WINDOWS, INC.
10653 NE QUAYBRIDGE CT.
MIAMI, FL 33138
TEL. (305) 624-7775



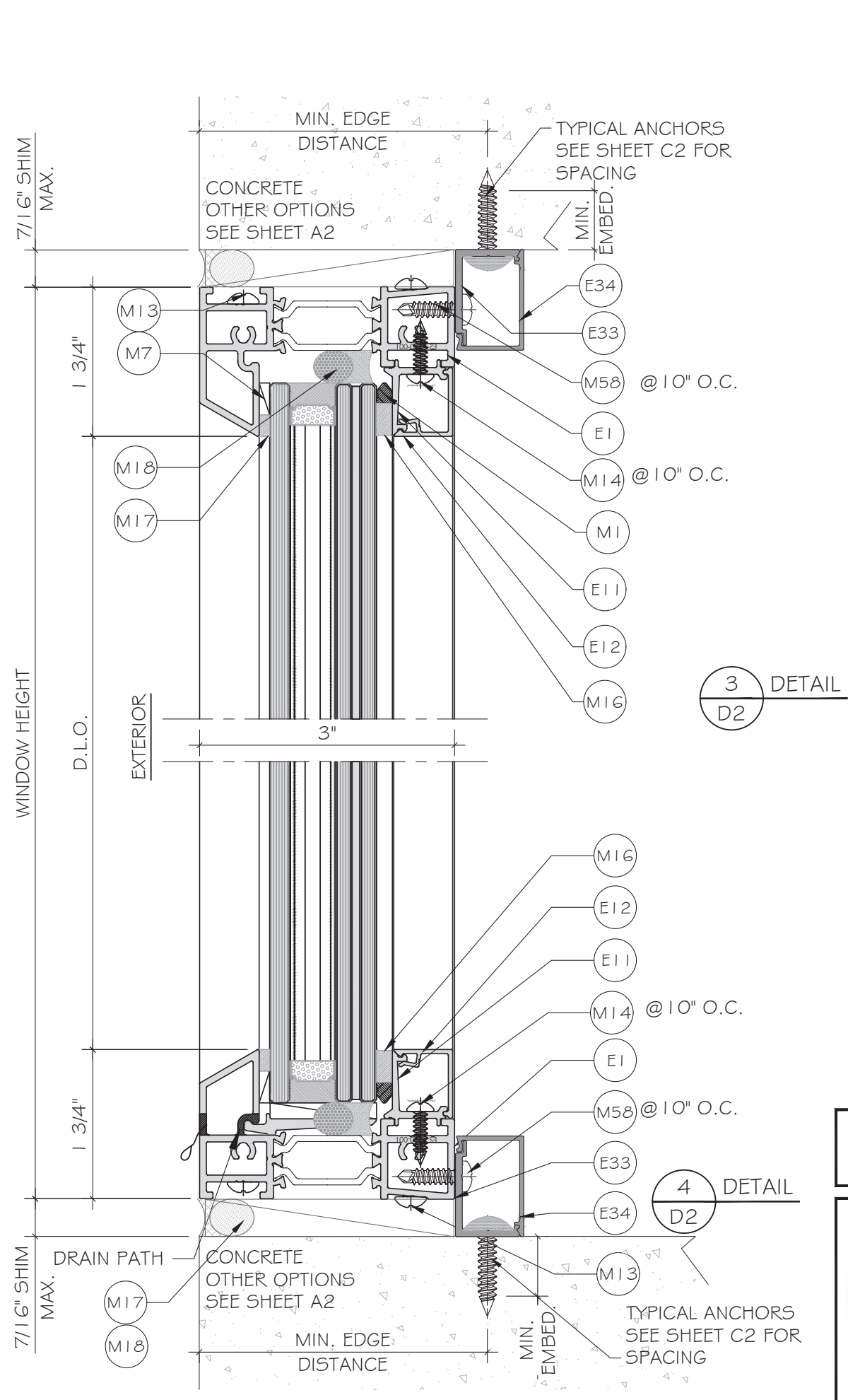
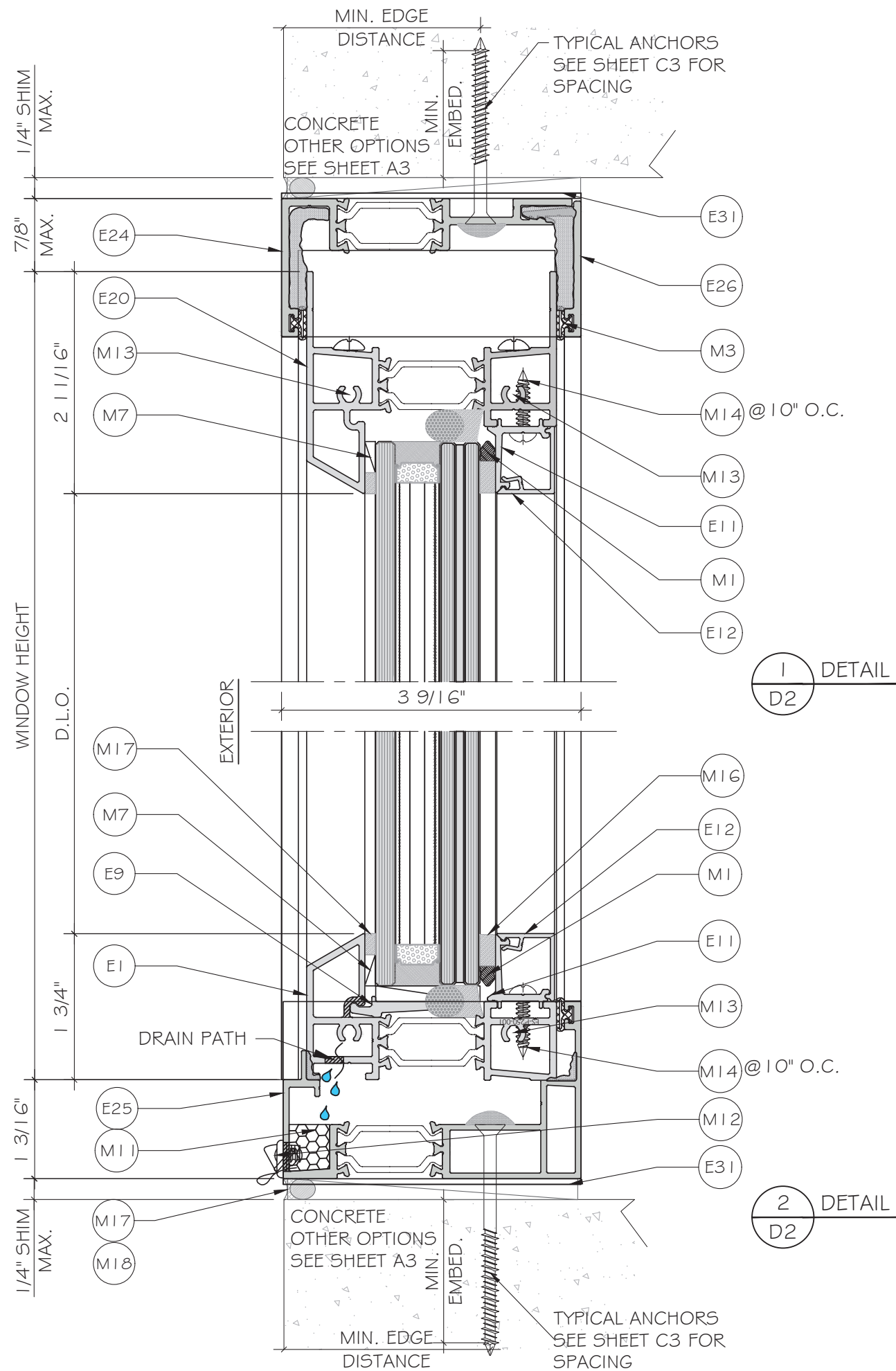
MCY ENGINEERING, INC.
GLAZING CONSULTANTS

12781 MIRAMAR PKWY, STE. 301
MIRAMAR, FL 33027 P: 305.271.0117
www.MCYEngineering.com mcy@mcyengineering.com

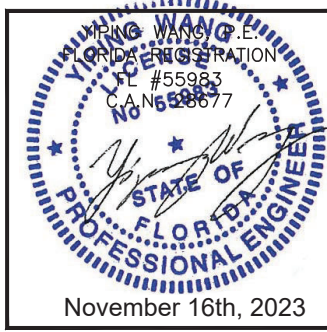
Rev. No.	Date	Drawn By	Description
R2	11.01.2023	JAMES	UPDATE TO FBC 2023

Drawn Date: 11.01.2023
Scale:
DRAWING NO.: AD21-49

Sheet No.: D1
12 OF 17



FLORIDA APPROVAL:
FL#40520.2



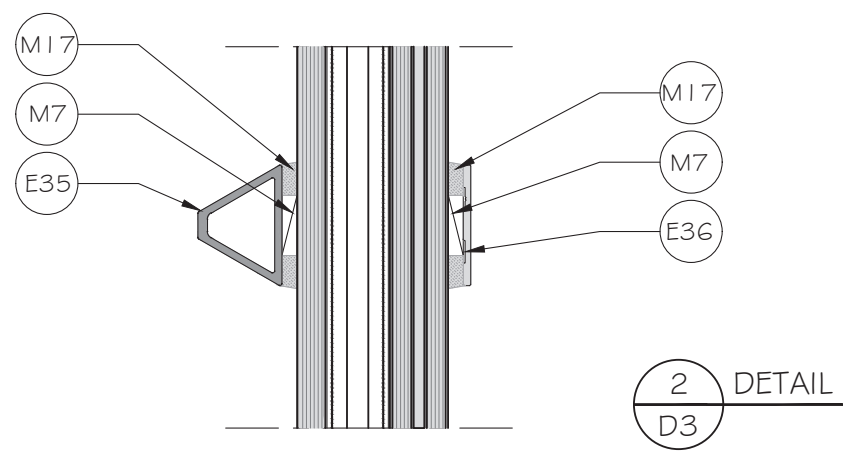
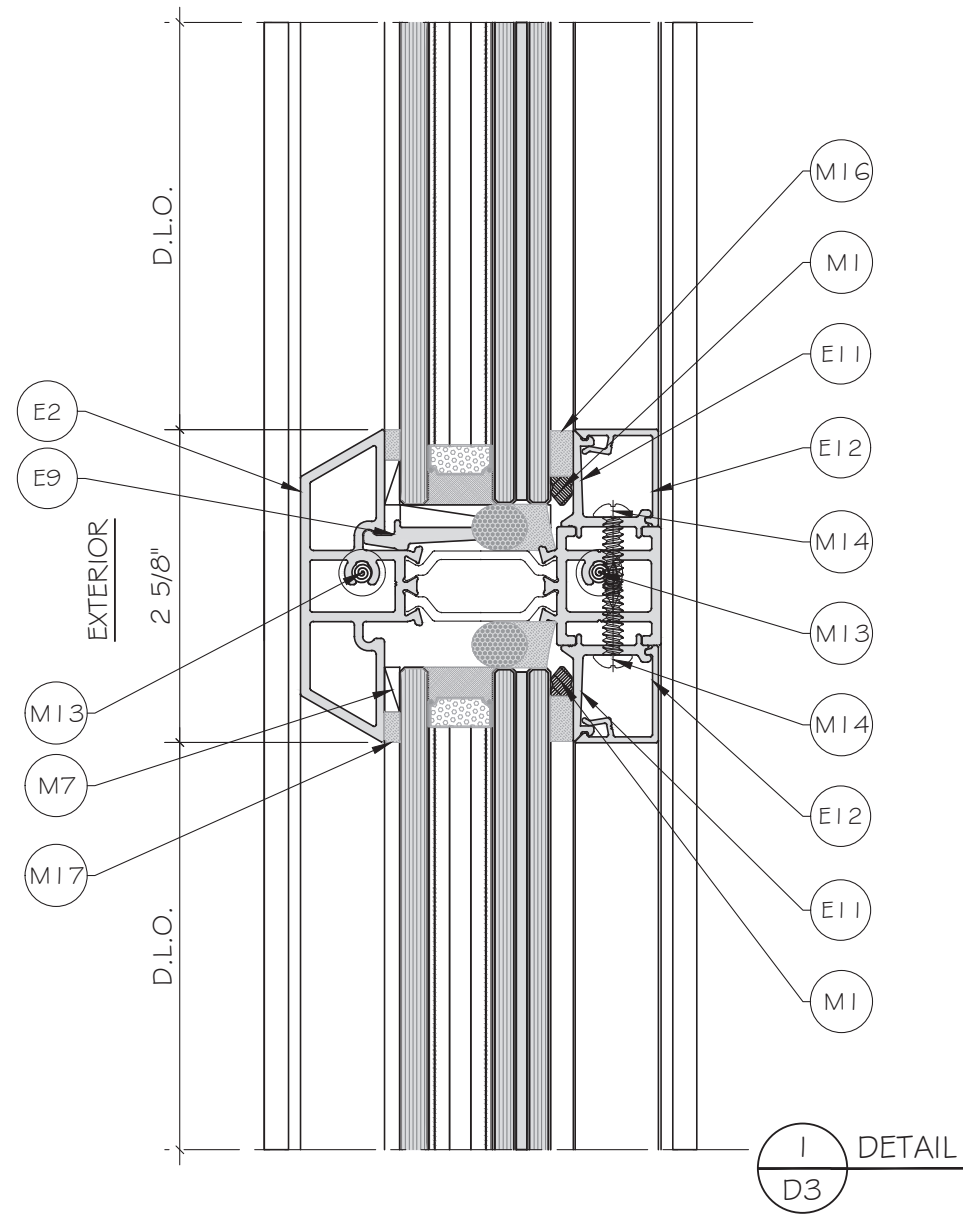
MCY ENGINEERING, INC.
 GLAZING CONSULTANTS
 12781 MIRAMAR PKWY, STE. 301
 MIRAMAR, FL 33027 P: 305.271.0117
 www.MCYEngineering.com mcy@mcyengineering.com

ES-P300 FIXED WINDOW - L.M.I.
 E.S.WINDOWS, INC.
 10653 NE QUAYBRIDGE CT.
 MIAMI, FL 33138
 TEL. (305) 624-7775

Rev. No.	Date	Drawn By	Description
R2	11.01.2023	JAMES	UPDATE TO FBC 2023

Drawn Date: 11.01.2023
 Scale:
 DRAWING NO.
AD21-49

D2
 Sheet No.
13 OF 17



FLORIDA APPROVAL:
FL#40520.2

YANG WANG, P.E.
 FLORIDA REGISTRATION
 FL #55983
 C.A. No. 6528677

November 16th, 2023

MCY ENGINEERING, INC.
 GLAZING CONSULTANTS

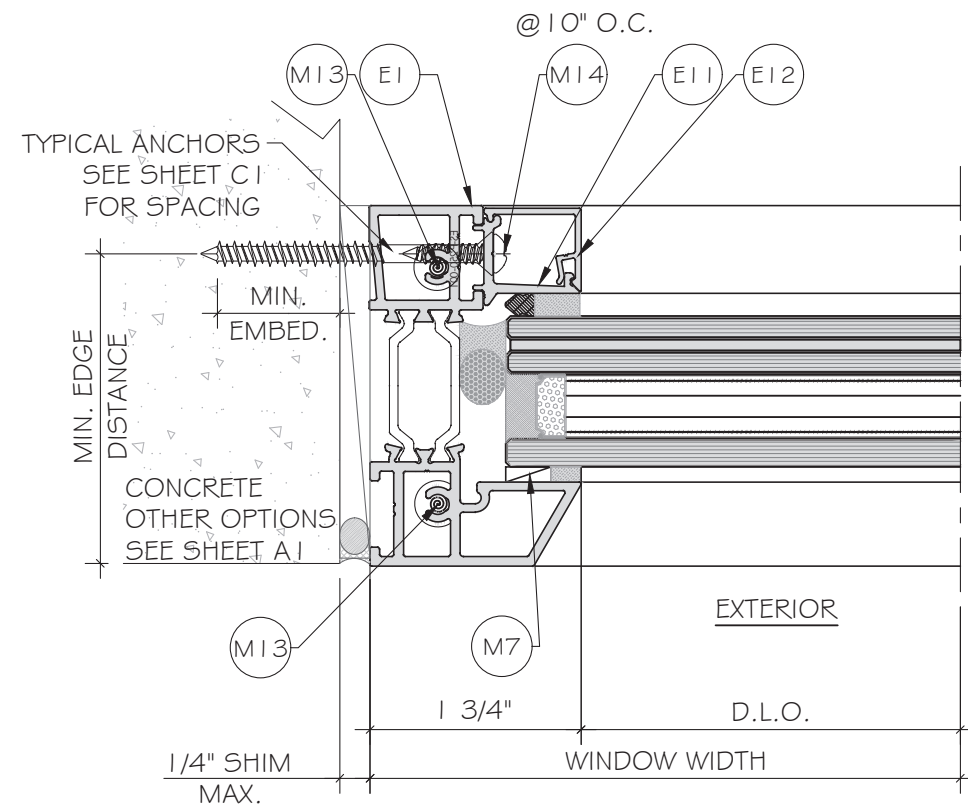
12781 MIRAMAR PKWY, STE. 301
 MIRAMAR, FL 33027 P: 305.271.0117
 www.MCYEngineering.com mcy@mcyengineering.com

ES-P300 FIXED WINDOW - L.M.I.

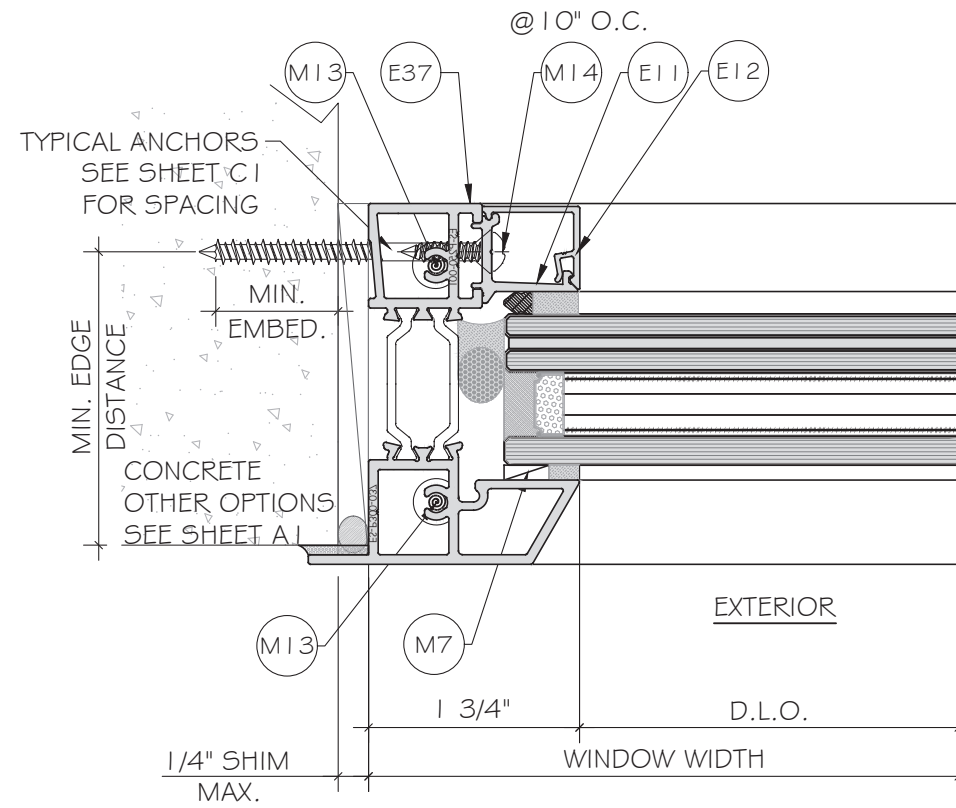
E.S. WINDOWS, INC.
 10653 NE QUAYBRIDGE CT.
 MIAMI, FL 33138
 TEL. (305) 624-7775

Rev. No.	Date	Drawn By	Description
R2	11.01.2023	JAMES	UPDATE TO FBC 2023

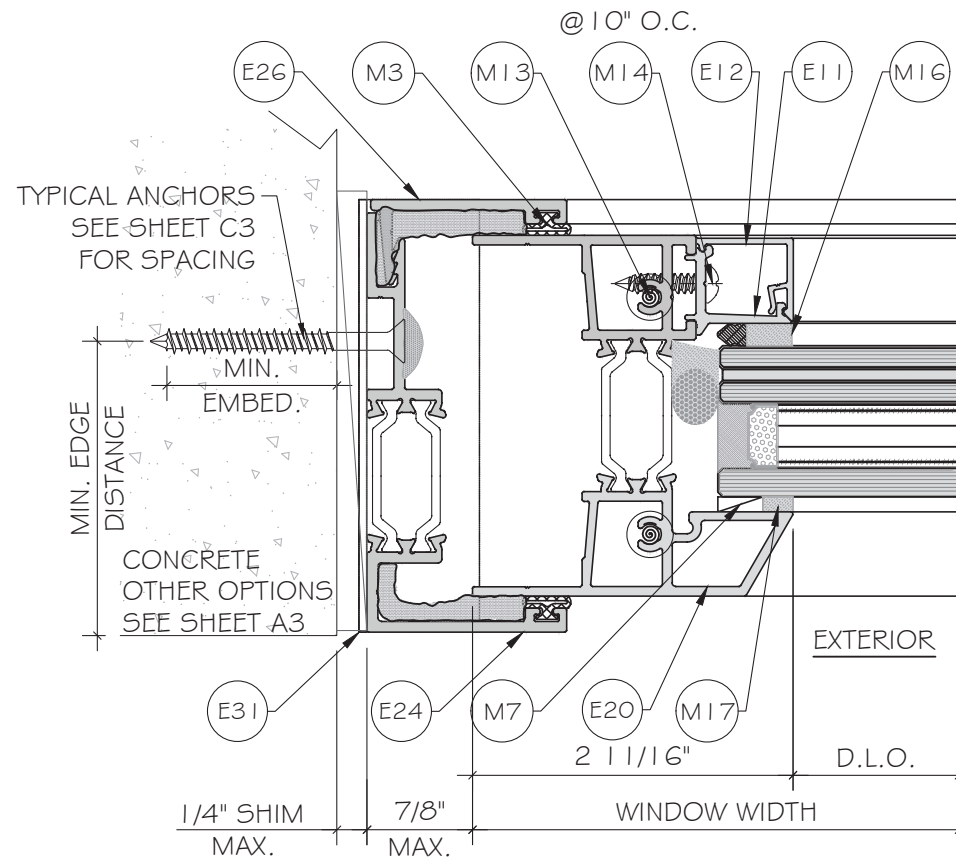
Drawn Date	Scale
11.01.2023	
DRAWING NO.	
AD21-49	
D3	
Sheet No.	
14 OF 17	



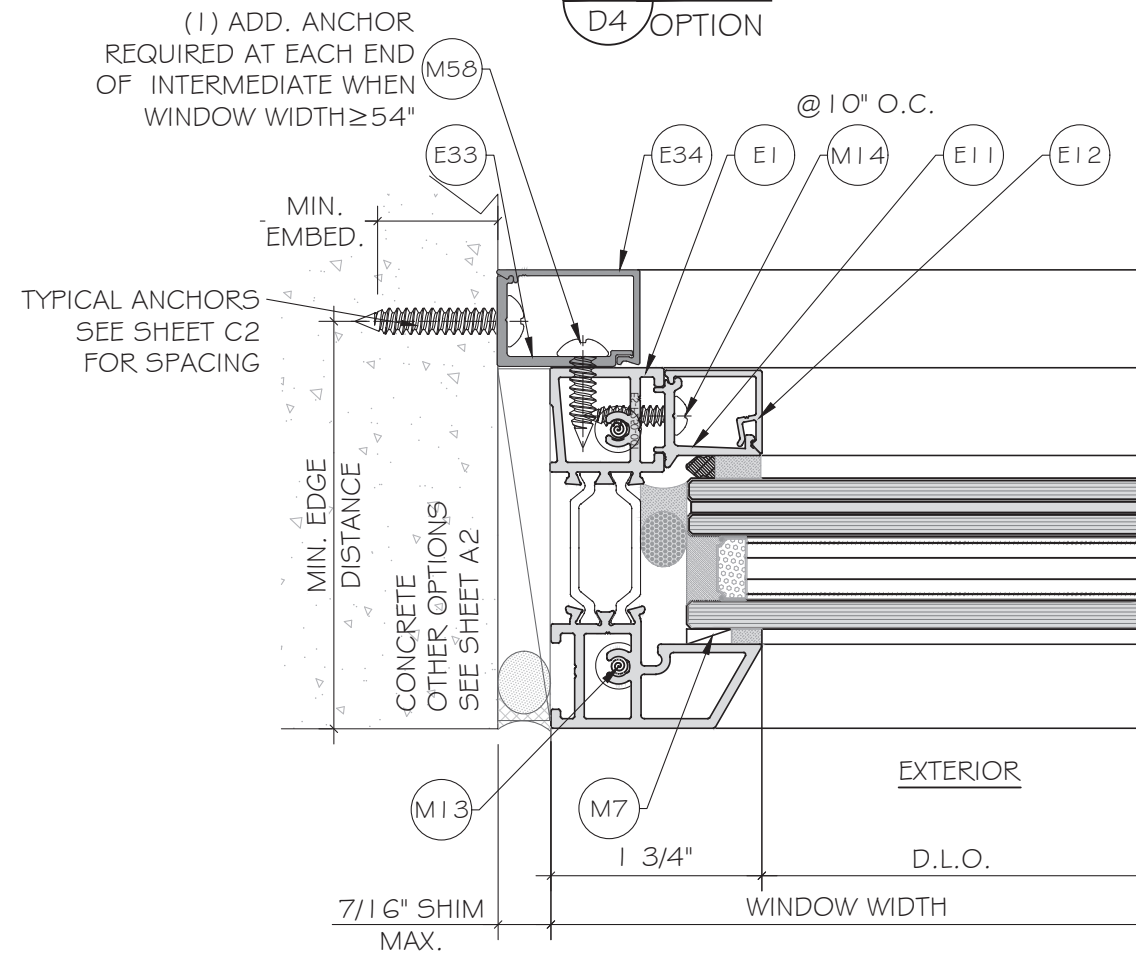
1
D4
DETAIL



1
D4
DETAIL
OPTION

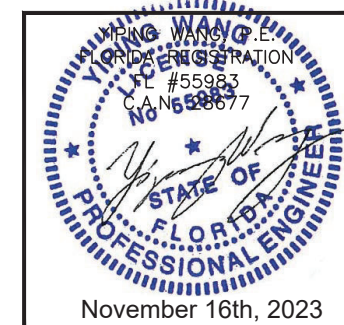


2
D4
DETAIL



3
D4
DETAIL

FLORIDA APPROVAL:
FL#40520.2



MCY ENGINEERING, INC.
GLAZING CONSULTANTS
12781 MIRAMAR PKWY, STE. 301
MIRAMAR, FL 33027 P: 305.271.0117
www.MCYEngineering.com mcy@mcyengineering.com

ES-P300 FIXED WINDOW - L.M.I.
E.S. WINDOWS, INC.
10653 NE QUAYBRIDGE CT.
MIAMI, FL 33138
TEL: (305) 624-7775

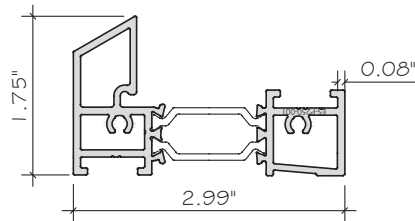
Rev. No.	Date	Drawn By	Description
R2	11.01.2023	JAMES	UPDATE TO FBC 2023

Drawn Date: 11.01.2023 Scale: _____

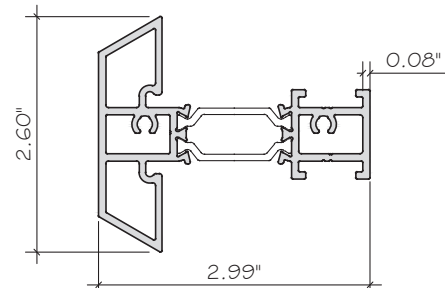
DRAWING NO. AD21-49

Sheet No. D4

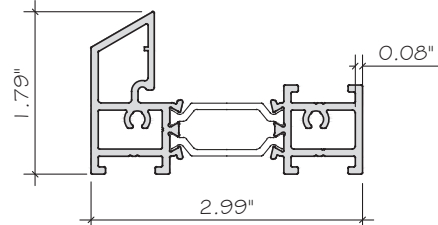
15 OF 17



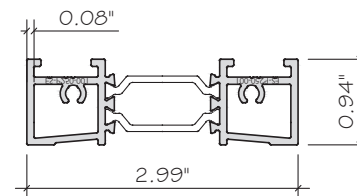
E1 FRAME FOR FIXED
ES-P300-501
ALUM. 6063-T6



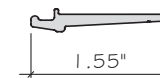
E2 INTERMEDIATE FOR FIXED
ES-P300-502
ALUM. 6063-T6



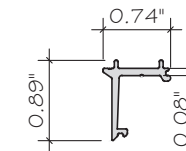
E3 INTERMEDIATE FOR FIXED |AWNING
ES-P300-503
ALUM. 6063-T6



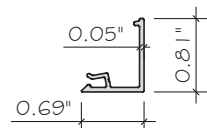
E6 JAMB FOR FIXED |AWNING
ES-P300-506
ALUM. 6063-T6



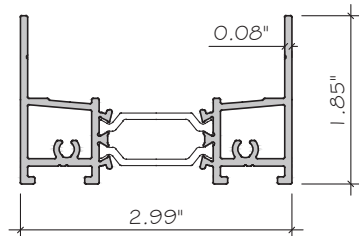
E9 SETTING CHAIR
ES-P300-002
ALUM. 6063-T6



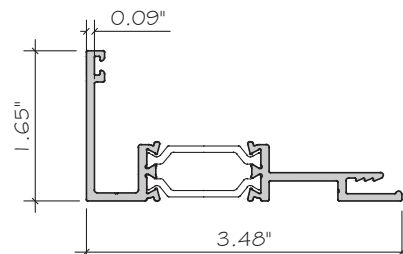
E11 IMPACT GLASS STOP @FIXED
ES-P300-004
ALUM. 6063-T6



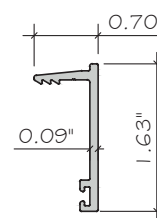
E12 IMPACT GLASS STOP COVER
ES-P300-005
ALUM. 6063-T5



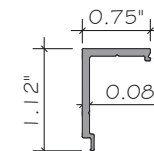
E23 FIXED |AWNING JAMB FOR RECEPTOR
ES-P300-522
ALUM. 6063-T6



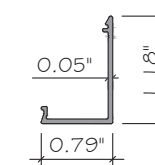
E24 RECEPTOR HEAD/JAMB
ES-P300-523
ALUM. 6063-T6



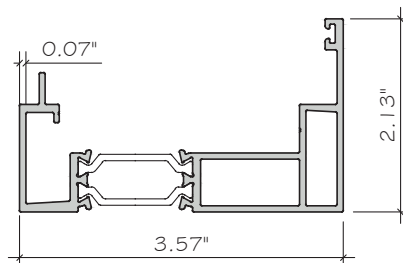
E26 RECEPTOR STOP
ES-P300-021
ALUM. 6063-T6



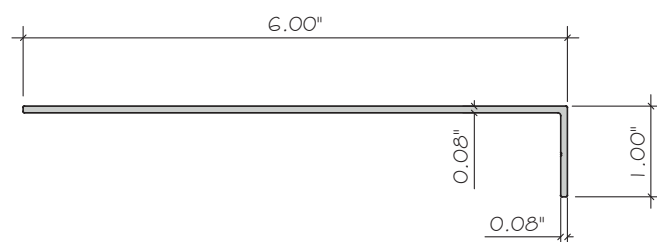
E33 STRAP ANCHOR
ES-P300-006
ALUM. 6063-T5



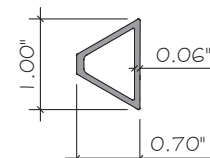
E34 STRAP ANCHOR COVER
ES-P300-007
ALUM. 6063-T5



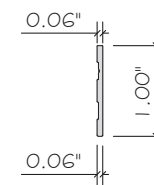
E25 RECEPTOR SILL
ES-P300-524
ALUM. 6063-T6



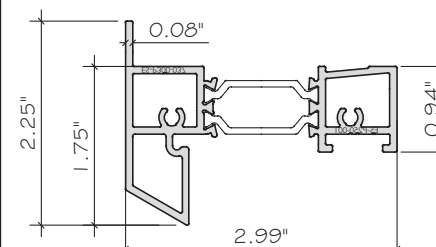
E31 END DAM
ES-CF-001
ALUM. 6063-T5



E35 MUNTIN
ES-P300-010
ALUM. 6063-T6



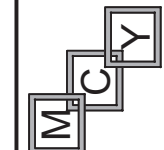
E36 ES-1014
ALUM. 6063-T6



E37 ES-P300-534 FRAME
FOR FIXED WITH FLANGE
ALUM. 6063-T6

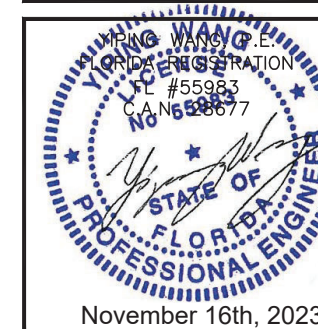
ES-P300 FIXED WINDOW - L.M.I.

E.S.WINDOWS, INC.
10653 NE QUAYBRIDGE CT.
MIAMI, FL 33138
TEL. (305) 624-7775



MCY ENGINEERING, INC.
GLAZING CONSULTANTS
12781 MIRAMAR PKWY, STE. 301
MIRAMAR, FL 33027 P: 305.271.0117
www.MCYEngineering.com mcy@mcyengineering.com

FLORIDA APPROVAL:
FL#40520.2



Rev. No.	Date	Drawn By	Description
R2	11.01.2023	JAMES	UPDATE TO FBC 2023
Drawn Date: 11.01.2023 Scale: _____ DRAWING NO. AD21-49 PART Sheet No. 16 OF 17			

MATERIAL LIST

CODE	PART NUMBER	DESCRIPTION	MATERIAL
E1	ES-P300-501	FRAME FOR FIXED	ALUMINIUM 6063-T6
E2	ES-P300-502	INTERMEDIATE FOR FIXED	ALUMINIUM 6063-T6
E3	ES-P300-503	INTERMEDIATE FOR FIXED AWNING	ALUMINIUM 6063-T6
E6	ES-P300-506	JAMB FOR FIXED AWNING	ALUMINIUM 6063-T6
E9	ES-P300-002	SETTING CHAIR	ALUMINIUM 6063-T6
E11	ES-P300-004	IMPACT GLASS STOP @FIXED	ALUMINIUM 6063-T6
E12	ES-P300-005	IMPACT GLASS STOP COVER @FIXED	ALUMINIUM 6063-T5
E18	ES-P300-018	FRONT FRAME ADAPTOR	ALUMINIUM 6063-T6
E19	ES-P251-018	CORNER JOINT	ALUMINIUM 6063-T6
E20	ES-P300-513	FIXED WINDOW HEAD/JAMB FOR RECEPTOR	ALUMINIUM 6063-T6
E22	ES-P300-520	VENT HEAD/JAMB FOR RECEPTOR (SCREEN)	ALUMINIUM 6063-T6
E23	ES-P300-522	FIXED AWNING JAMB FOR RECEPTOR	ALUMINIUM 6063-T6
E24	ES-P300-523	RECEPTOR HEAD/JAMB	ALUMINIUM 6063-T6
E25	ES-P300-524	RECEPTOR SILL	ALUMINIUM 6063-T6
E26	ES-P300-021	RECEPTOR STOP	ALUMINIUM 6063-T6
E30	ES-EUR-001	EUROBAR	ALUMINIUM 6063-T6
E31	ES-CF-001	END DAM	ALUMINIUM 6063-T5
E33	ES-P300-006	STRAP ANCHOR	ALUMINIUM 6063-T5
E34	ES-P300-007	STRAP ANCHOR COVER	ALUMINIUM 6063-T5
E35	ES-P300-010	MUNTIN	ALUMINIUM 6063-T6
E36	ES-1014	ES-1014	ALUMINIUM 6063-T6
E37	ES-P300-534	FRAME FOR FIXED WITH FLANGE	ALUMINIUM 6063-T6

MATERIAL LIST

CODE	PART NUMBER	DESCRIPTION	MATERIAL
M1	ES-SD451-G04	WEDGE GASKET@ GLASS PERIMETER SILICONE 60±3 SHORE A	SILICONE
M2	ES-4520-B02A	SETTING BLOCK@ SILICONE 80±3 SHORE A	SILICONE
M3	ES-5008A	BUBBLE GASKET @ GLAZING BEAD & RECEPTOR	SILICONE 65±5 SHORE A
M7	1/8" x 1/2" TAPE	DOUBLE FACE TAPE	POLYURETHENE
M10	PJ5-43-55	CORNER KEY PJ5-43-55	STAINLESS STEEL
M11	WPSA-N1	RETICULATED FOAM 3OPPI 3/4" x 3/4" x 2"	OPEN CELL FOAM
M12	1222-XXX	WEEP HOLE COVER	NYLON 6
M13	#10 x 1/4" PH	ASSEMBLY SCREW	STAINLESS STEEL
M14	#8 x 5/8" PH	SCREW FOR GLASS STOP	STAINLESS STEEL
M15	#8 x 1/2" FH	SCREW FOR CORNER KEY ES-P251-018	STAINLESS STEEL
M16	DOWSIL 983	STRUCTURAL SILICONE	SILICONE
M17	DOWSIL 791	SEALANT SILICONE	SILICONE
M18	BACKER ROD 1/2"	BACKER ROD OPEN CELL @ GLASS PERIMETER	POLYURETHENE
M58	#12 x 1/2" PH	SCREW FOR MUNTIN	STAINLESS STEEL

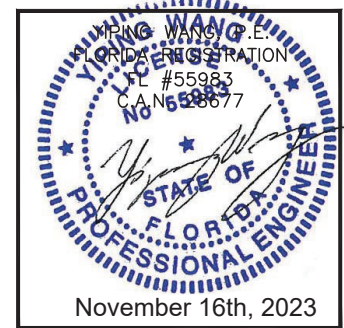
MCY ENGINEERING, INC.
 GLAZING CONSULTANTS
 12781 MIRAMAR PKWY, STE. 301
 MIRAMAR, FL 33027 P: 305.271.0117
 www.MCYEngineering.com mcy@mcyengineering.com



ES-P300 FIXED WINDOW - L.M.I.

E.S.WINDOWS, INC.
 10653 NE QUAYBRIDGE CT.
 MIAMI, FL 33138
 TEL: (305) 624-7775

FLORIDA APPROVAL:
FL#40520.2



Rev. No.	Date	Drawn By	Description
R2	11.01.2023	JAMES	UPDATE TO FBC 2023

Drawn Date	Scale
11.01.2023	
DRAWING NO.	
AD21-49	
BOM	
Sheet No.	
17 OF 17	