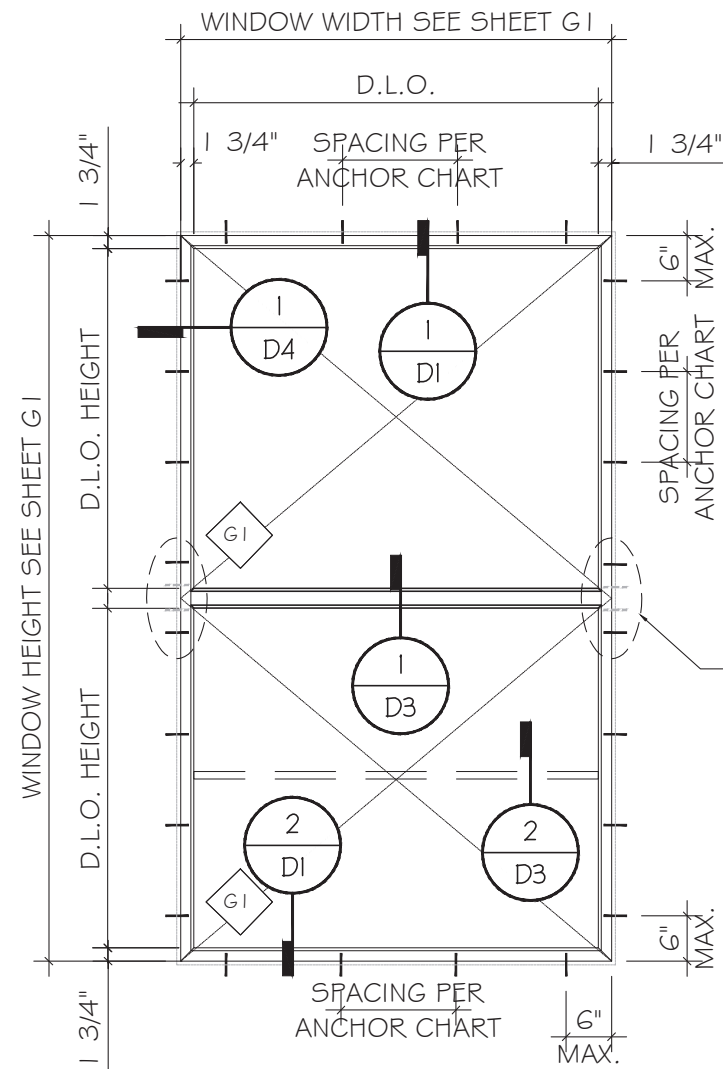


DIRECT ANCHOR

TYPICAL WINDOW ELEVATIONS

D.L.O. HEIGHT = WINDOW HEIGHT - 3.5"

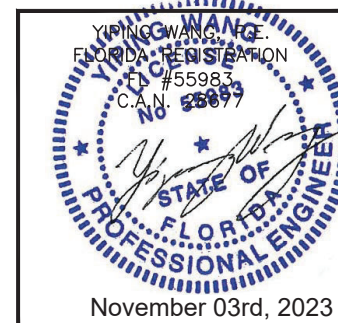
D.L.O. WIDTH = WINDOW WIDTH - 3.5"



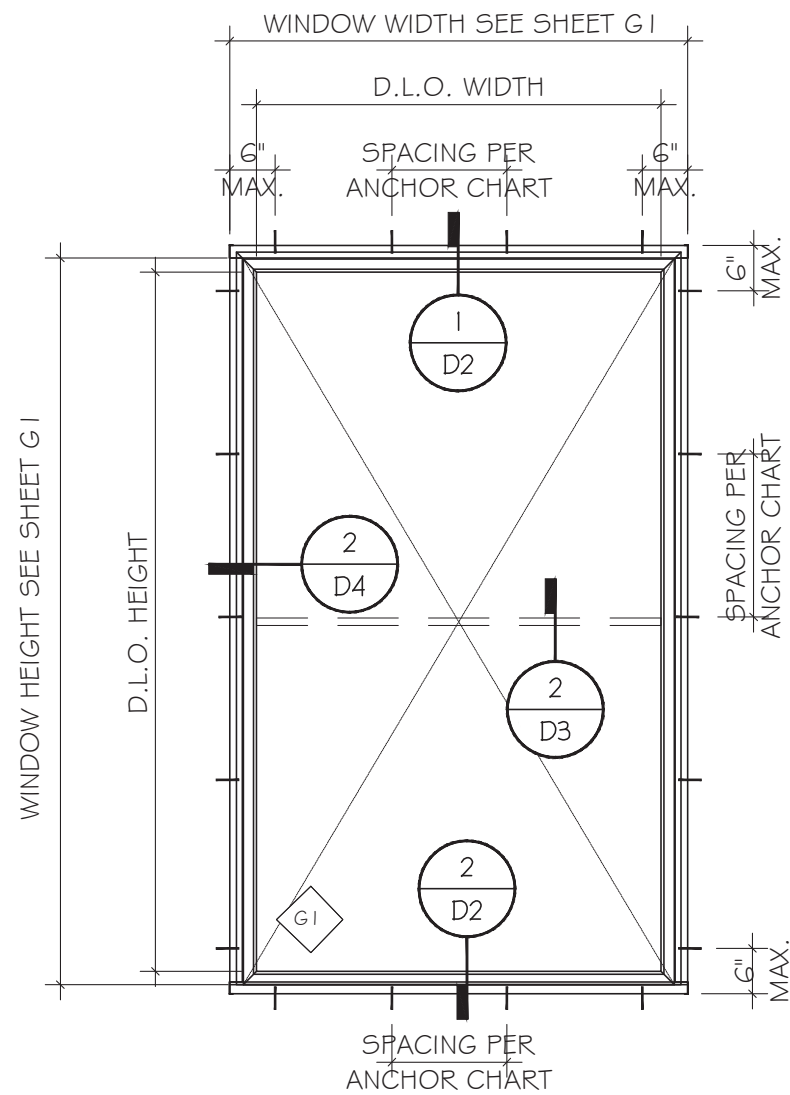
DIRECT ANCHOR

TYPICAL WINDOW ELEVATIONS

FLORIDA APPROVAL:
FL#40520.1



Rev. No.	Date	Drawn By	Description
R2	11.02.2023	JAMES	UPDATE TO FBC 2023
Drawn Date 11.02.2023		Scale	
DRAWING NO. AD21-50			
E1 Sheet No.			
2 OF 17			

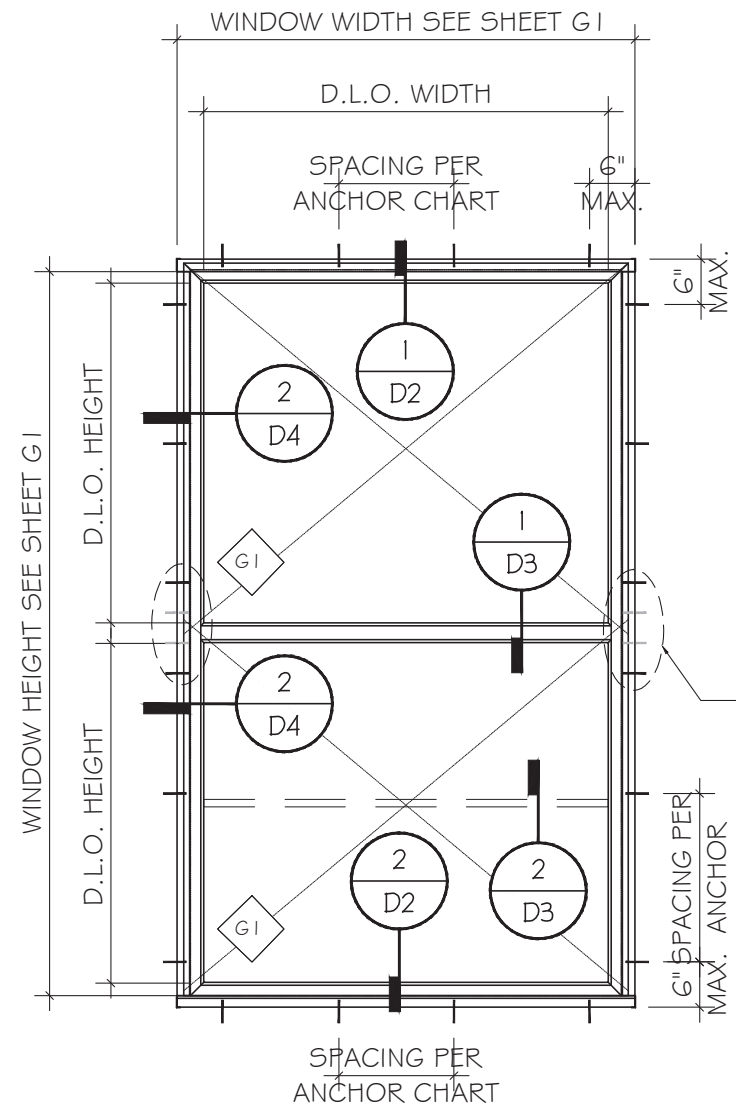


ANCHOR WITH RECEPTOR

TYPICAL WINDOW ELEVATIONS

D.L.O. HEIGHT = WINDOW HEIGHT - 4.44"

D.L.O. WIDTH = WINDOW WIDTH - 5.38"

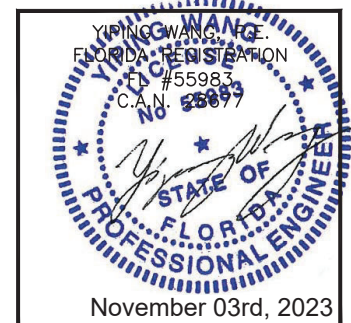


ANCHOR WITH RECEPTOR

TYPICAL WINDOW ELEVATIONS

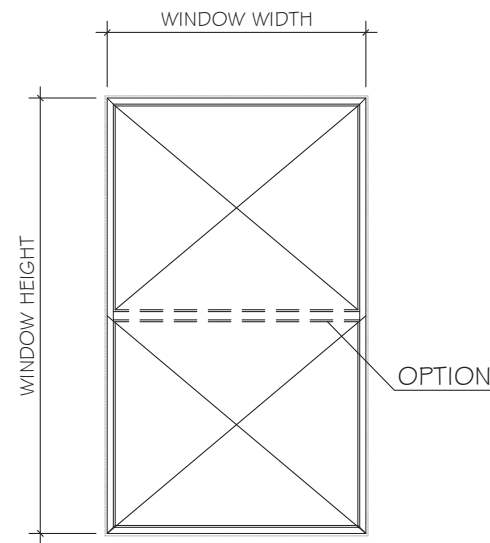
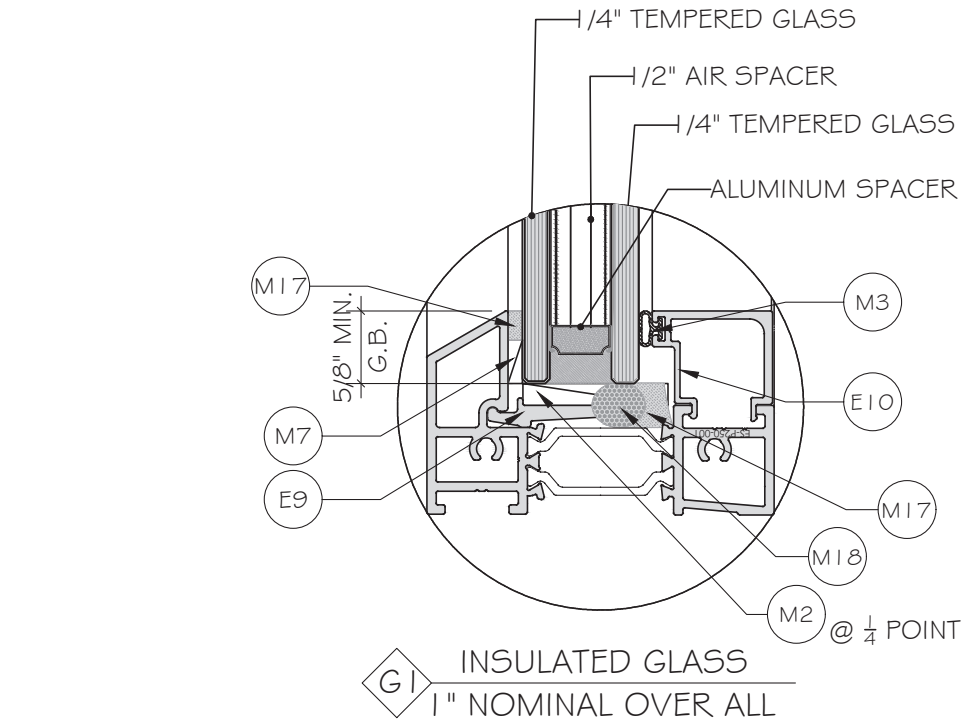
ADDITIONAL ANCHOR REQUIRED WHEN FW ≥ 48". CLUSTER OF ANCHOR @ 4" O.C.

FLORIDA APPROVAL:
FL#40520.1



Rev. No.	Date	Drawn By	Description
R2	11.02.2023	JAMES	UPDATE TO FBC 2023
Drawn Date: 11.02.2023 Scale:			
DRAWING NO. AD21-50			
E3			
Sheet No. 4 OF 17			

FIXED WINDOW ALLOWABLE PRESSURE			
WINDOW HEIGHT	WINDOW WIDTH	ALLOWABLE LOAD	
		PSF EXT (+)	PSF INT (-)
72.0	36.0	100.0	100.0
	42.0		
	48.0	95.0	100.0
	54.0	84.0	95.0
	60.0	76.0	86.0
	66.0	69.0	78.0
	72.0	53.0	60.0
78.0	36.0	100.0	100.0
	42.0		
	48.0	95.0	100.0
	54.0	84.0	95.0
	60.0	76.0	86.0
	66.0	63.0	71.0
84.0	36.0	100.0	100.0
	42.0		
	48.0	94.0	100.0
	54.0	84.0	95.0
	60.0	76.0	86.0
90.0	36.0	100.0	100.0
	42.0		
	48.0	91.0	100.0
	54.0	84.0	95.0
	60.0	73.0	82.0
96.0	36.0	100.0	100.0
	42.0	98.0	100.0
	48.0	89.0	100.0
	54.0	83.0	100.0
	57.0	80.0	90.0



NOTE:
GLASS COMPLIES WITH ASTM E1300-09
(3 SEC. GUSTS).

FLORIDA APPROVAL:
FL#40520.1

YIPING WANG
FLORIDA REGISTRATION
#55983
C.A.N. 68899

STATE OF FLORIDA
PROFESSIONAL ENGINEER

November 03rd, 2023

MCY ENGINEERING, INC.
GLAZING CONSULTANTS
12781 MIRAMAR PKWY, STE. 301
MIRAMAR, FL 33027 P: 305.271.0117
www.MCYEngineering.com mcy@mcyengineering.com

ES-P300 FIXED WINDOW - N.I.
E.S.WINDOWS, INC.
10653 NE QUAYBRIDGE CT.
MIAMI, FL 33138
TEL. (305) 624-7775

Rev. No.	Date	Drawn By	Description
R2	11.02.2023	JAMES	UPDATE TO FBC 2023

Drawn Date: 11.02.2023 Scale:

DRAWING NO. AD21-50

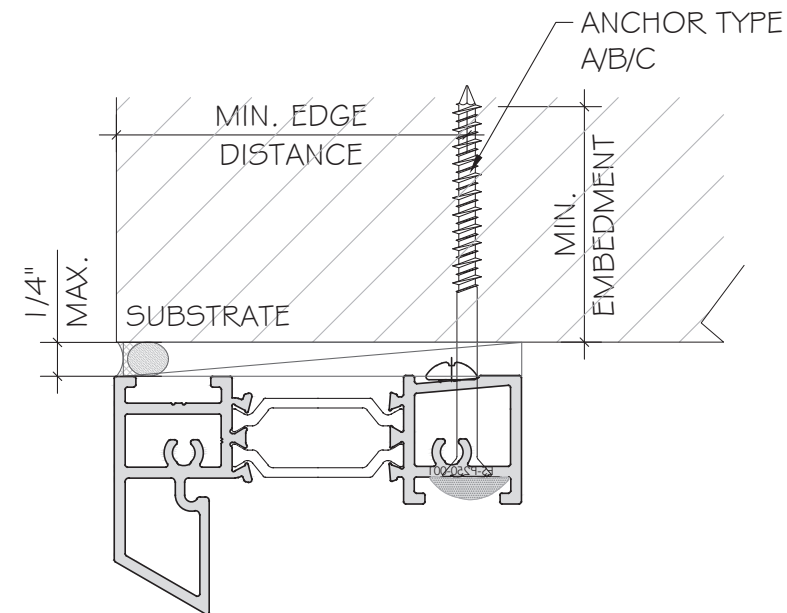
G1

Sheet No. 5 OF 17

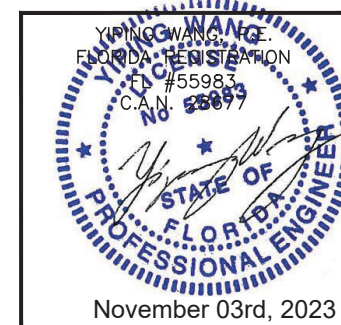
ANCHOR CHART FOR ANCHOR TYPE "A" "B" "C"

WINDOW HEIGHT INCH	WINDOW WIDTH INCH	ALLOWABLE LOAD (EXT+)PSF	ALLOWABLE LOAD (INT-)PSF	ANCHOR SPACING (INCH)		
				TYPE A INTO WOOD	TYPE B INTO CONCRETE	TYPE C INTO METAL
72.0	36.0	80.0	90.0	12	12	12
	42.0	80.0	90.0	11	11	11
	48.0	80.0	90.0	9	9	9
	54.0	80.0	90.0	9	9	9
	60.0	76.0	86.0	9	9	9
	66.0	69.0	78.0	9	9	9
	72.0	63.0	71.0	10	10	10
78.0	36.0	80.0	90.0	12	12	12
	42.0	80.0	90.0	11	11	11
	48.0	80.0	90.0	9	9	9
	54.0	80.0	90.0	9	9	9
	60.0	76.0	86.0	9	9	9
	66.0	69.0	78.0	9	9	9
84.0	36.0	80.0	90.0	12	12	12
	42.0	80.0	90.0	11	11	11
	48.0	80.0	90.0	9	9	9
	54.0	80.0	90.0	9	9	9
	60.0	76.0	86.0	9	9	9
90.0	36.0	80.0	90.0	12	12	12
	42.0	80.0	90.0	11	11	11
	48.0	80.0	90.0	9	9	9
	54.0	80.0	90.0	9	9	9
	60.0	76.0	86.0	9	9	9
96.0	36.0	80.0	90.0	12	12	12
	42.0	80.0	90.0	11	11	11
	48.0	80.0	90.0	9	9	9
	54.0	80.0	90.0	9	9	9
	57.0	80.0	90.0	9	9	9

SEE SHEET A I FOR ANCHOR TYPES



FLORIDA APPROVAL:
FL#40520.1



MCY ENGINEERING, INC.
GLAZING CONSULTANTS
12781 MIRAMAR PKWY, STE. 301
MIRAMAR, FL 33027 P: 305.271.0117
www.MCYEngineering.com mcy@mcyengineering.com

ES-P300 FIXED WINDOW - N.I.
E.S. WINDOWS, INC.
10653 NE QUAYBRIDGE CT.
MIAMI, FL 33138
TEL: (305) 624-7775

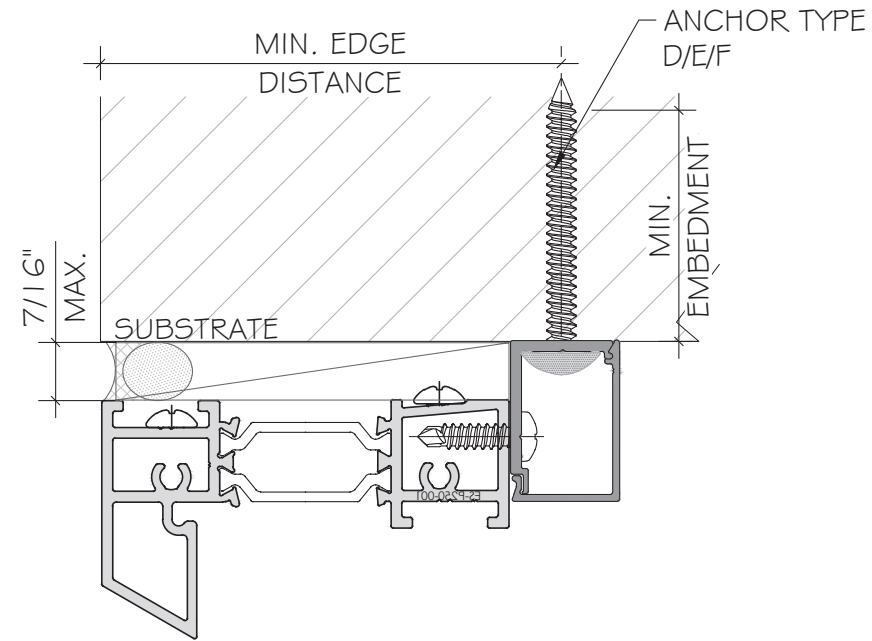
Rev. No.	Date	Drawn By	Description
R2	11.02.2023	JAMES	UPDATE TO FBC 2023

Drawn Date: 11.02.2023
Scale:
DRAWING NO.: AD21-50
Sheet No.: 6 OF 17

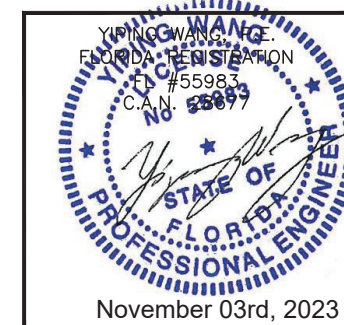
ANCHOR CHART FOR ANCHOR TYPE "D" "E" "F"

WINDOW HEIGHT INCH	WINDOW WIDTH INCH	ALLOWABLE LOAD (EXT+)PSF	ALLOWABLE LOAD (INT-)PSF	ANCHOR SPACING (INCH)		
				TYPE D INTO WOOD	TYPE E INTO CONCRETE	TYPE F INTO METAL
72.0	36.0	80.0	90.0	10	15	16
	42.0	80.0	90.0	9	13	15
	48.0	80.0	90.0	8	11	13
	54.0	80.0	90.0	7	11	12
	60.0	76.0	86.0	7	11	12
	66.0	69.0	78.0	7	11	12
	72.0	63.0	71.0	9	13	15
78.0	36.0	80.0	90.0	10	15	16
	42.0	80.0	90.0	9	13	15
	48.0	80.0	90.0	8	11	13
	54.0	80.0	90.0	7	11	12
	60.0	76.0	86.0	7	11	12
84.0	36.0	80.0	90.0	10	15	16
	42.0	80.0	90.0	10	13	15
	48.0	80.0	90.0	8	11	13
	54.0	80.0	90.0	8	11	12
	60.0	76.0	86.0	8	11	12
90.0	36.0	80.0	90.0	10	15	16
	42.0	80.0	90.0	9	13	15
	48.0	80.0	90.0	8	11	13
	54.0	80.0	90.0	7	11	12
96.0	36.0	80.0	90.0	10	15	16
	42.0	80.0	90.0	9	13	15
	48.0	80.0	90.0	8	11	13
	54.0	80.0	90.0	7	11	13
	57.0	80.0	90.0	7	11	12

SEE SHEET A2 FOR ANCHOR TYPES



FLORIDA APPROVAL:
FL#40520.1



MCY ENGINEERING, INC.
GLAZING CONSULTANTS
12781 MIRAMAR PKWY, STE. 301
MIRAMAR, FL 33027 P: 305.271.0117
www.MCYEngineering.com mcy@mcyengineering.com

ES-P300 FIXED WINDOW - N.I.
E.S.WINDOWS, INC.
10653 NE QUAYBRIDGE CT.
MIAMI, FL 33138
TEL. (305) 624-7775

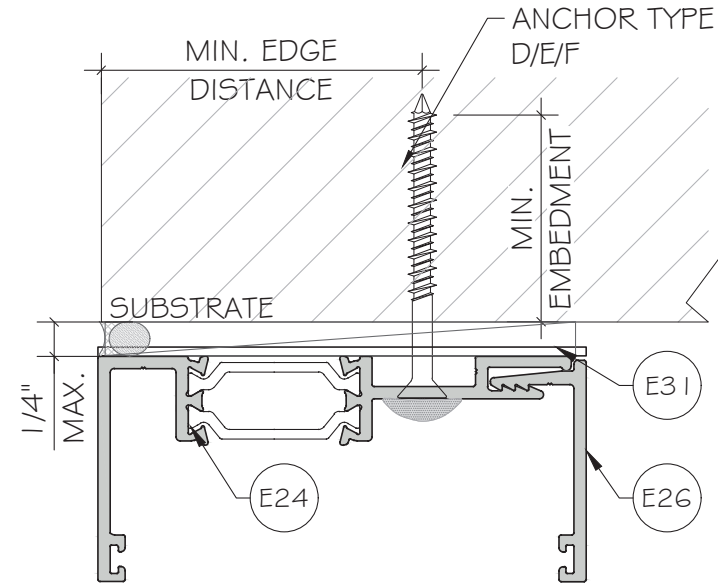
Rev. No.	Date	Drawn By	Description
R2	11.02.2023	JAMES	UPDATE TO FBC 2023

Drawn Date: 11.02.2023
Scale:
DRAWING NO.: AD21-50
C2
Sheet No.: 7 OF 17

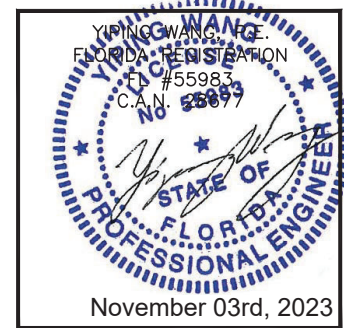
ANCHOR CHART FOR ANCHOR TYPE "D" "E" "F"

WINDOW HEIGHT INCH	WINDOW WIDTH INCH	ALLOWABLE LOAD (EXT+)PSF	ALLOWABLE LOAD (INT-)PSF	ANCHOR SPACING (INCH)		
				TYPE D INTO WOOD	TYPE E INTO CONCRETE	TYPE F INTO METAL
72.0	36.0	80.0	90.0	11	16	16
	42.0	80.0	90.0	9	15	16
	48.0	80.0	90.0	9	13	16
	54.0	80.0	90.0	9	14	16
	60.0	76.0	86.0	9	14	16
	66.0	69.0	78.0	9	14	16
	72.0	63.0	71.0	11	16	16
78.0	36.0	80.0	90.0	11	16	16
	42.0	80.0	90.0	10	15	16
	48.0	80.0	90.0	9	14	16
	54.0	80.0	90.0	9	14	16
	60.0	76.0	86.0	9	14	16
	66.0	69.0	78.0	10	15	16
84.0	36.0	80.0	90.0	11	16	16
	42.0	80.0	90.0	10	15	16
	48.0	80.0	90.0	9	14	16
	54.0	80.0	90.0	9	14	16
90.0	36.0	80.0	90.0	11	16	16
	42.0	80.0	90.0	10	15	16
	48.0	80.0	90.0	9	14	16
	54.0	80.0	90.0	9	14	16
96.0	36.0	80.0	90.0	11	16	16
	42.0	80.0	90.0	10	15	16
	48.0	80.0	90.0	10	14	16
	54.0	80.0	90.0	9	14	16
96.0	36.0	80.0	90.0	11	16	16
	42.0	80.0	90.0	10	15	16
	48.0	80.0	90.0	10	14	16
	57.0	80.0	90.0	9	14	16

SEE SHEET A3 FOR ANCHOR TYPES



FLORIDA APPROVAL:
FL#40520.1



MCY ENGINEERING, INC.
GLAZING CONSULTANTS
12781 MIRAMAR PKWY, STE. 301
MIRAMAR, FL 33027 P: 305.271.0117
www.MCYEngineering.com mcy@mcyengineering.com

ES-P300 FIXED WINDOW - N.I.
E.S.WINDOWS, INC.
10653 NE QUAYBRIDGE CT.
MIAMI, FL 33138
TEL: (305) 624-7775

Rev. No.	Date	Drawn By	Description
R2	11.02.2023	JAMES	UPDATE TO FBC 2023

Drawn Date: 11.02.2023
Scale:
DRAWING NO.: AD21-50
Sheet No.: 8 OF 17

TYPICAL ANCHOR TYPES:

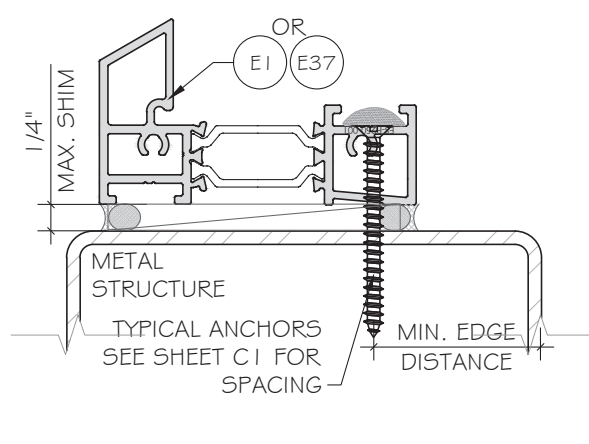
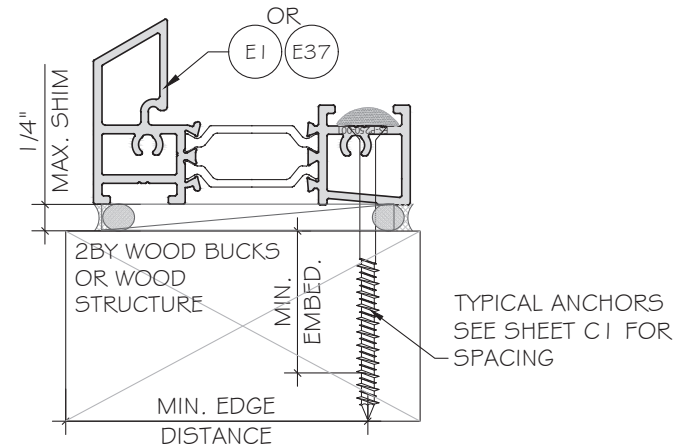
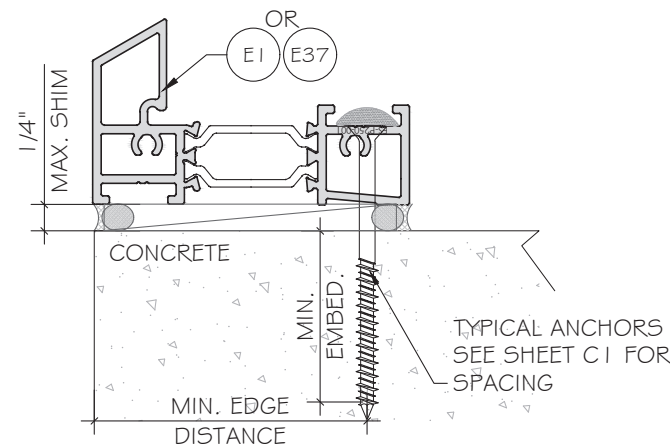
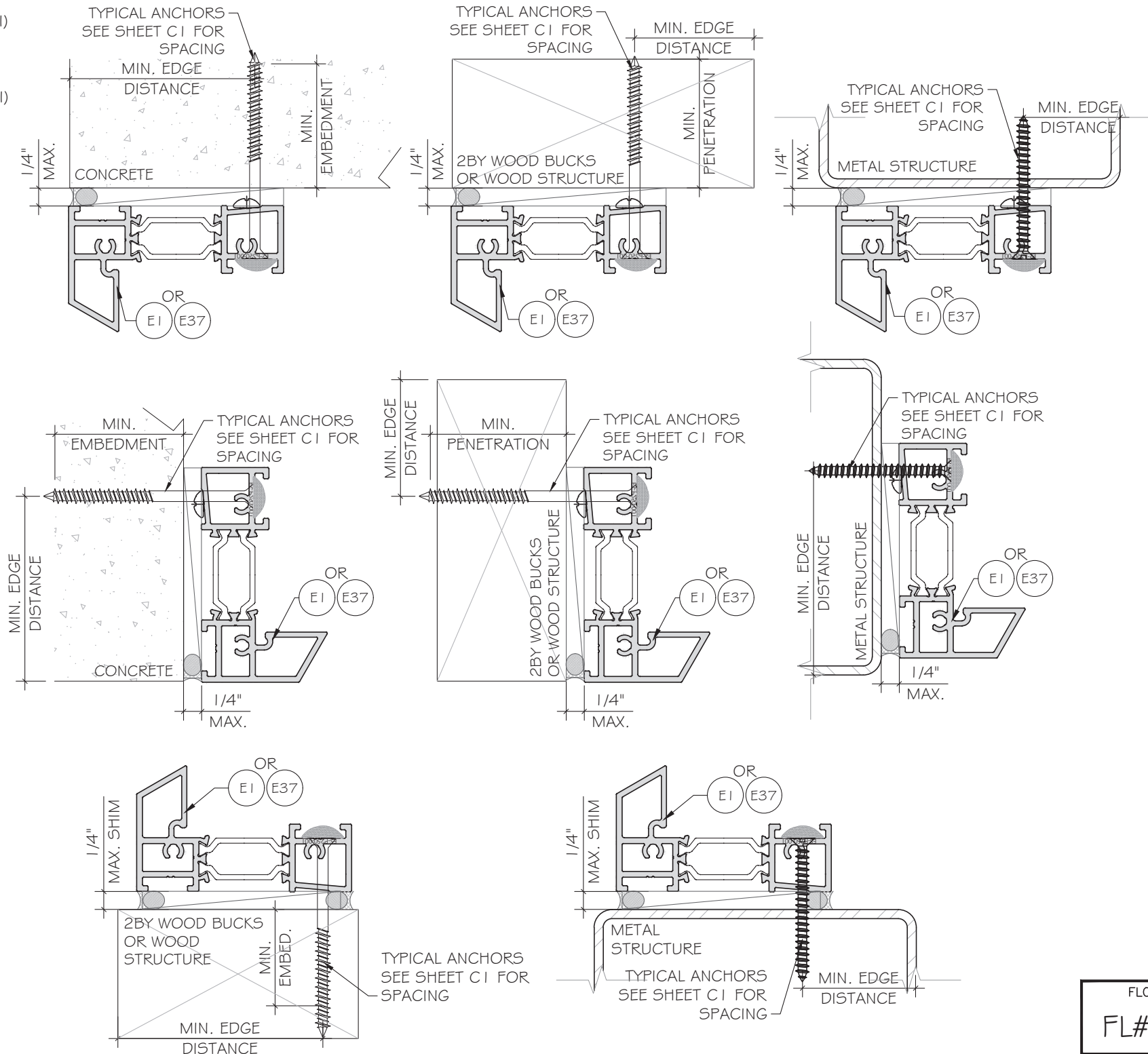
ANCHOR TYPE 'A' - 3/16" DIA. ULTRACON BY 'DEWALT'(Fu=164 KSI, Fy=117 KSI) INTO 2BY WOOD BUCKS (SG=0.55 MIN.) WITH 1 1/2" MIN. PENETRATION. OR THRU 1BY WOOD BUCK INTO CONCRETE WITH MIN. 1 3/4" EMBEDMENT.

ANCHOR TYPE 'B' - 3/16" DIA. ULTRACON BY 'DEWALT'(Fu=164 KSI, Fy=117 KSI) DIRECTLY INTO CONCRETE Fc=3KSI MIN. W/1 3/4" MIN. EMBEDMENT

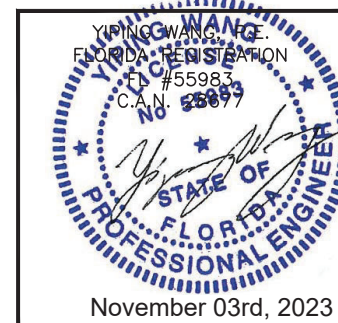
ANCHOR TYPE 'C' - #10 - SELF DRILLING SCREW GRADE 5 (Fu=120KSI, Fy=92KSI) INTO F.B.C. APPROVED MULLIONS OR INTO METAL STRUCTURES. (3) THREADS MIN. PENETRATION BEYOND METAL SUBSTRATE

ALUMINUM: 1/8" THK. MIN. (6063-T5, MIN)
STEEL: 1/8" THK. MIN. (Fy=36KSI MIN)
STEEL: 1/8" THK. STL STRUCTURE
(STEEL IN CONTACT WITH ALUMINUM TO BE PLATED OR PAINTED)

TYPICAL EDGE DISTANCE
INTO CONCRETE = 2 1/2" MIN.
INTO WOOD = 1" MIN.
INTO METAL STRUCTURE = 1/2" MIN.



FLORIDA APPROVAL:
FL#40520.1



MCY ENGINEERING, INC.
GLAZING CONSULTANTS
12781 MIRAMAR PKWY, STE. 301
MIRAMAR, FL 33027 P: 305.271.0117
www.MCYEngineering.com mcy@mcyengineering.com

ES-P300 FIXED WINDOW - N.I.
E.S.WINDOWS, INC.
10653 NE QUAYBRIDGE CT.
MIAMI, FL 33138
TEL. (305) 624-7775

Rev. No.	Date	Drawn By	Description
R2	11.02.2023	JAMES	UPDATE TO FBC 2023

Drawn Date	Scale
11.02.2023	
DRAWING NO.	
AD21-50	
Sheet No.	
9 OF 17	

TYPICAL ANCHOR TYPES:

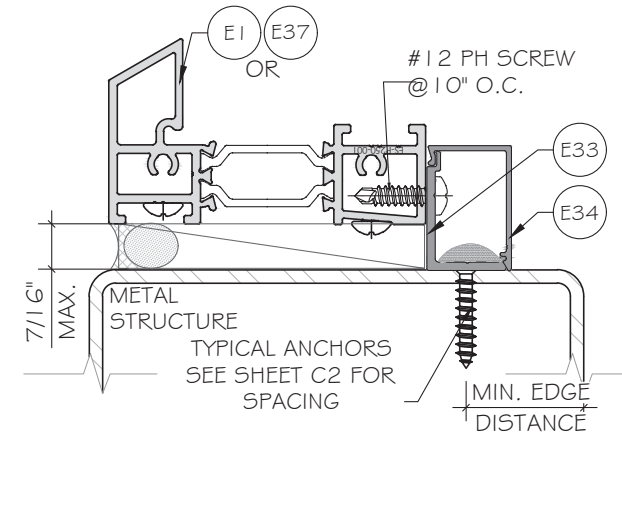
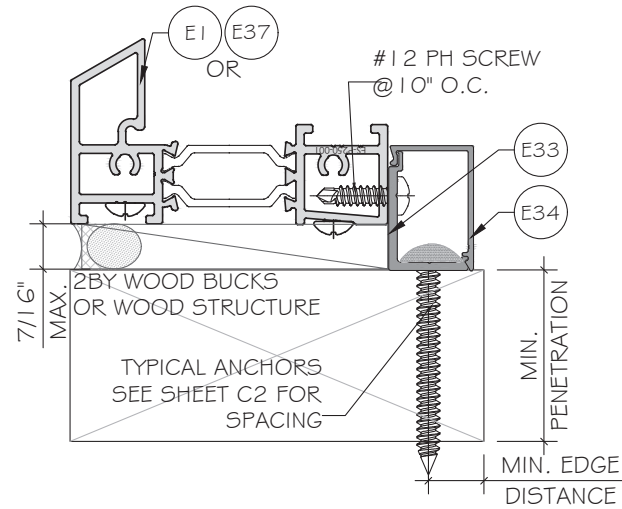
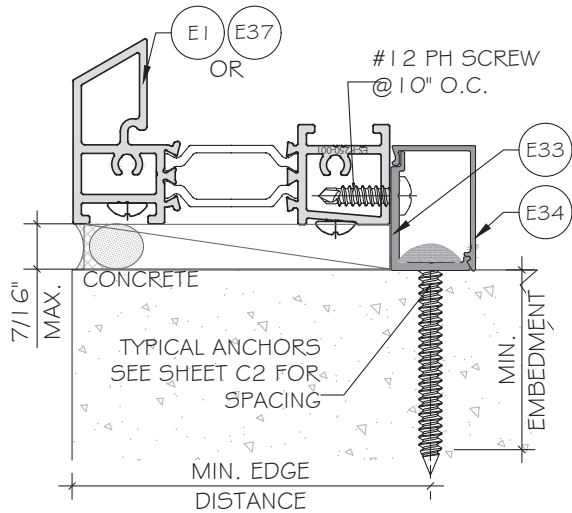
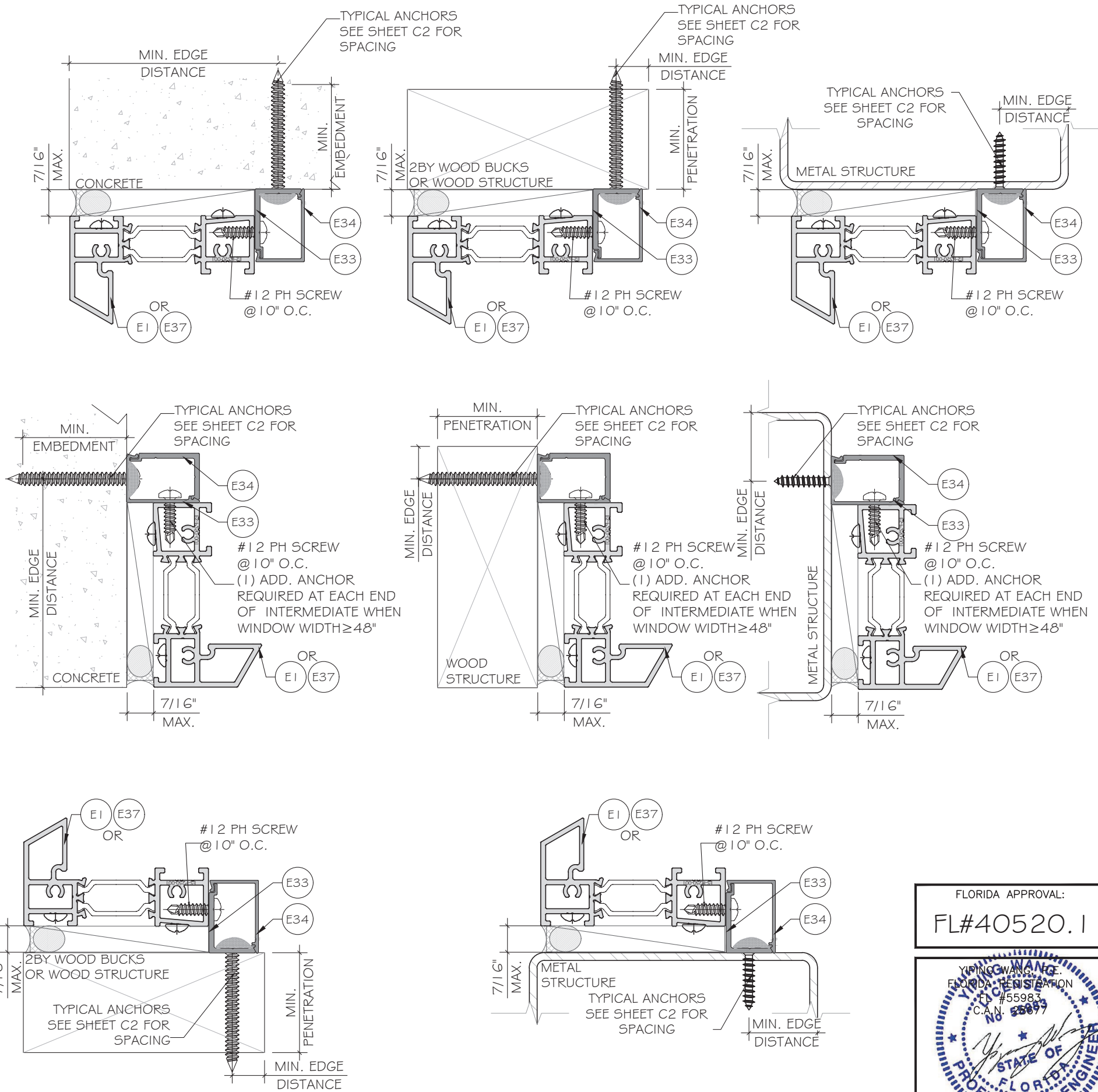
ANCHOR TYPE 'D' - 1/4" DIA. ULTRACON+ BY 'DEWALT'(Fu=164KSI, Fy=148KSI) INTO 2BY WOOD BUCKS (SG=0.55 MIN.) WITH 1 1/2" MIN. PENETRATION. OR THRU 1BY WOOD BUCK INTO CONCRETE

ANCHOR TYPE 'E' - 1/4" DIA. ULTRACON+ BY 'DEWALT'(Fu=164KSI, Fy=148KSI) DIRECTLY INTO CONCRETE $f_c=3KSI$ MIN. W/1 3/4" MIN. EMBEDMENT

ANCHOR TYPE 'F' - 1/4" DIA. SEFL-DRILLING SCREWS, GRADE 5 (Fu=120KSI, Fy=92KSI) INTO METAL STRUCTURES. (3) THREADS MIN. PENETRATION BEYOND METAL SUBSTRATE

ALUMINUM: 1/8" THK. MIN. (6063-T5, MIN)
 STEEL: 1/8" THK. MIN. (Fy=36KSI MIN)
 STEEL: 12GA STL STRUCTURE
 (STEEL IN CONTACT WITH ALUMINUM TO BE PLATED OR PAINTED)

TYPICAL EDGE DISTANCE
 INTO CONCRETE = 2 1/2" MIN.
 INTO WOOD = 1" MIN.
 INTO METAL STRUCTURE = 1/2" MIN.



FLORIDA APPROVAL:
FL#40520.1

YIPING WANG
 YIPING WANG
 FLORIDA REGISTRATION
 #55983
 C.A.N. 68899
 STATE OF
 FLORIDA
 PROFESSIONAL ENGINEER
 November 03rd, 2023

MCY ENGINEERING, INC.
 GLAZING CONSULTANTS
 12781 MIRAMAR PKWY, STE. 301
 MIRAMAR, FL 33027
 P: 305.271.0117
 www.MCYEngineering.com mcy@mcyengineering.com

ES-P300 FIXED WINDOW - N.I.
 E.S.WINDOWS, INC.
 10653 NE QUAYBRIDGE CT.
 MIAMI, FL 33138
 TEL. (305) 624-7775

Rev. No.	Date	Drawn By	Description
R2	11.02.2023	JAMES	UPDATE TO FBC 2023
Drawn Date		Scale	
DRAWING NO.			
AD21-50			
Sheet No.			
10 OF 17			

ANCHOR OPTIONS:

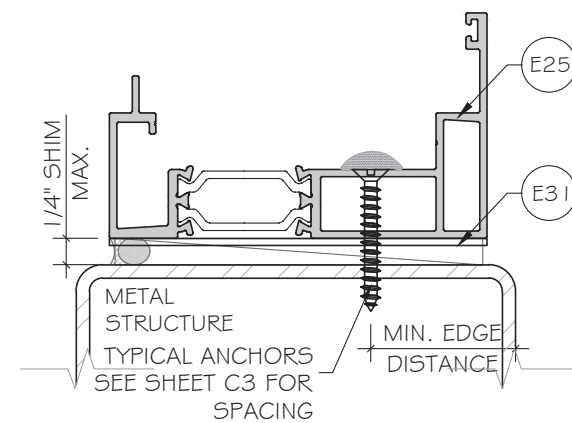
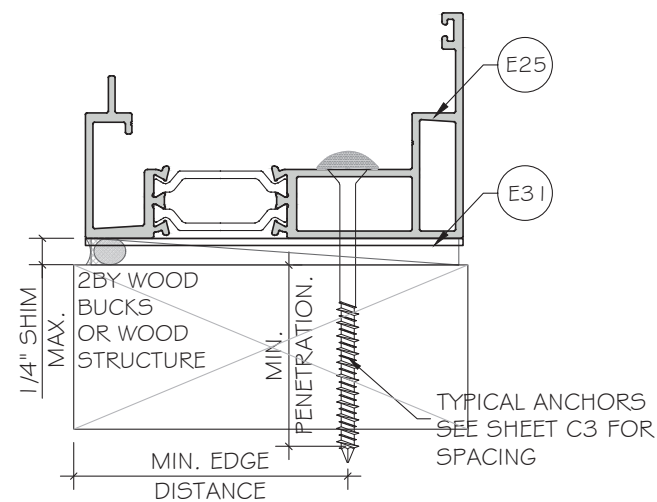
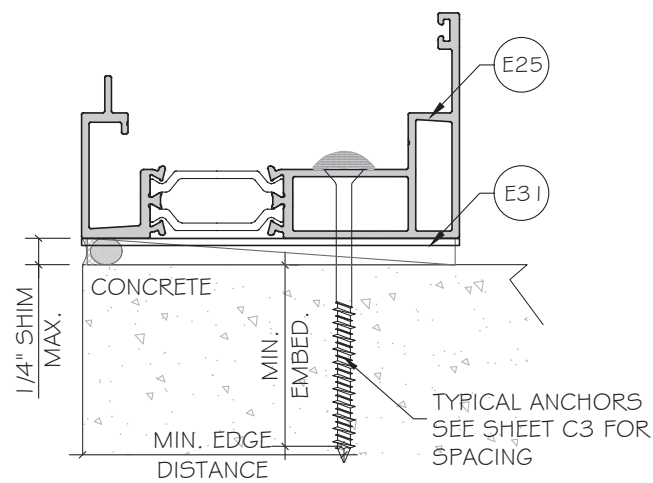
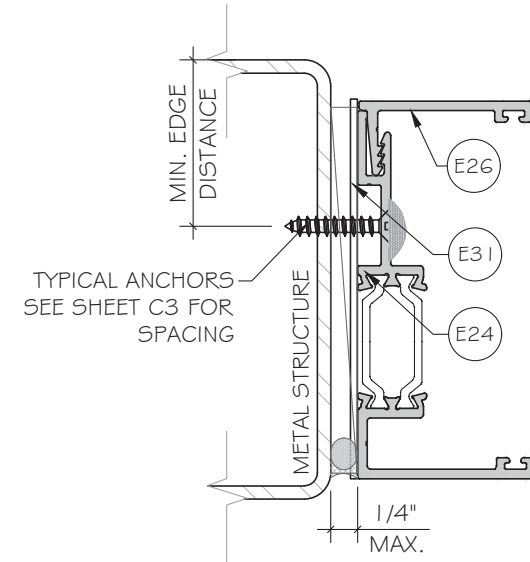
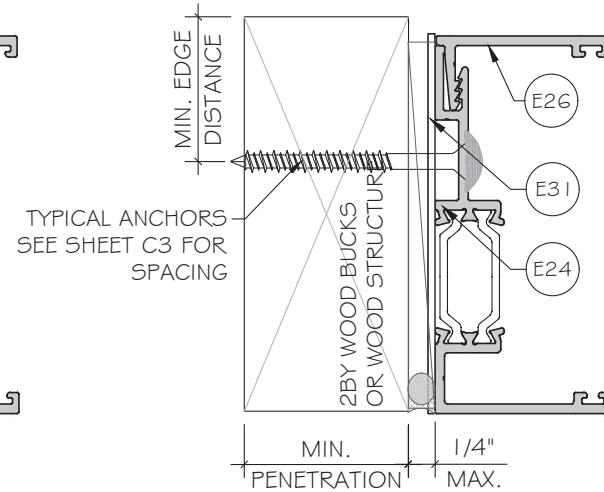
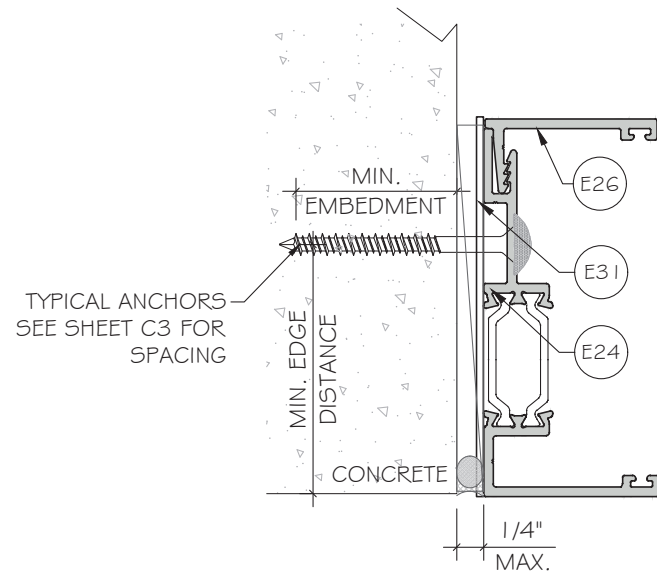
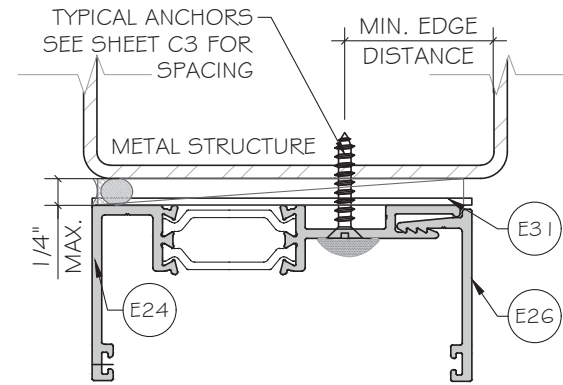
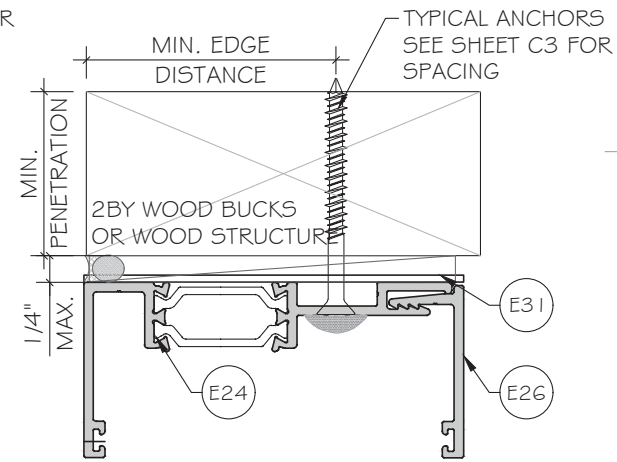
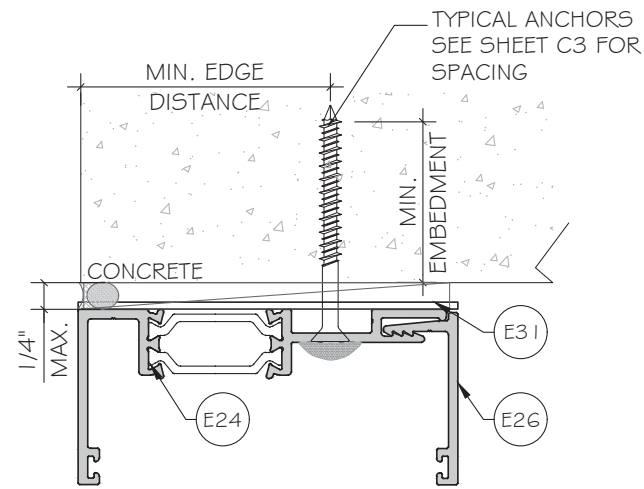
ANCHOR TYPE 'D' - 1/4" DIA. ULTRACON+ BY 'DEWALT'(Fu=164KSI, Fy=148KSI) INTO 2BY WOOD BUCKS (SG=0.55 MIN.) WITH 1 1/2" MIN. PENETRATION. OR THRU 1 BY WOOD BUCK INTO CONCRETE

ANCHOR TYPE 'E' - 1/4" DIA. ULTRACON+ BY 'DEWALT'(Fu=164KSI, Fy=148KSI) DIRECTLY INTO CONCRETE $f_c=3KSI$ MIN. W/1 3/4" MIN. EMBEDMENT

ANCHOR TYPE 'F' - 1/4" DIA. SEFL-DRILLING SCREWS, GRADE 5 (Fu=120KSI, Fy=92KSI) INTO METAL STRUCTURES. (3) THREADS MIN. PENETRATION BEYOND METAL SUBSTRATE

ALUMINUM: 1/8" THK. MIN. (6063-T5, MIN)
 STEEL: 1/8" THK. MIN. (Fy=36KSI MIN)
 STEEL: 12GA STL STRUCTURE
 (STEEL IN CONTACT WITH ALUMINUM TO BE PLATED OR PAINTED)

TYPICAL EDGE DISTANCE
 INTO CONCRETE = 2 1/2" MIN.
 INTO WOOD = 1" MIN.
 INTO METAL STRUCTURE = 1/2" MIN.



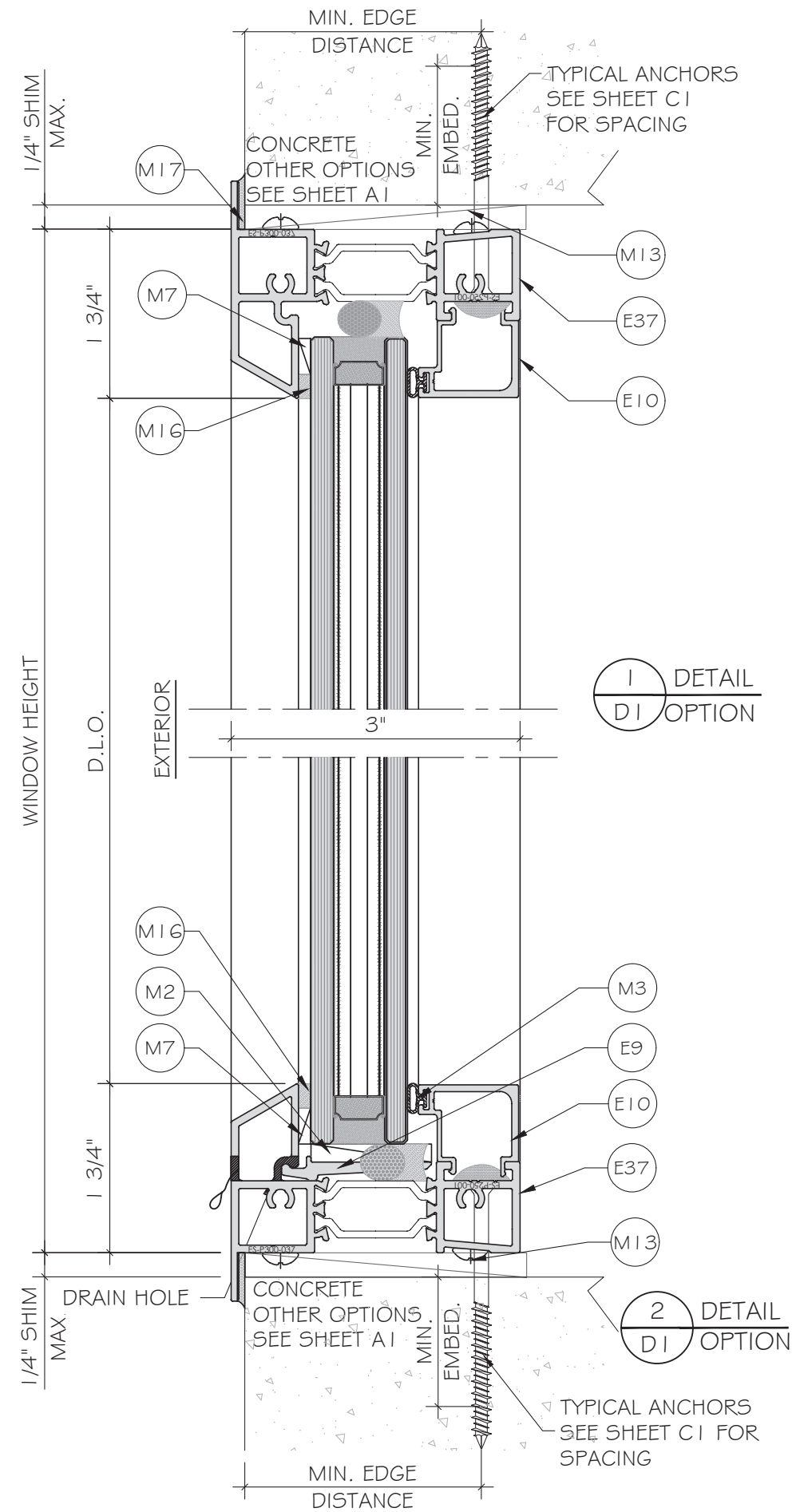
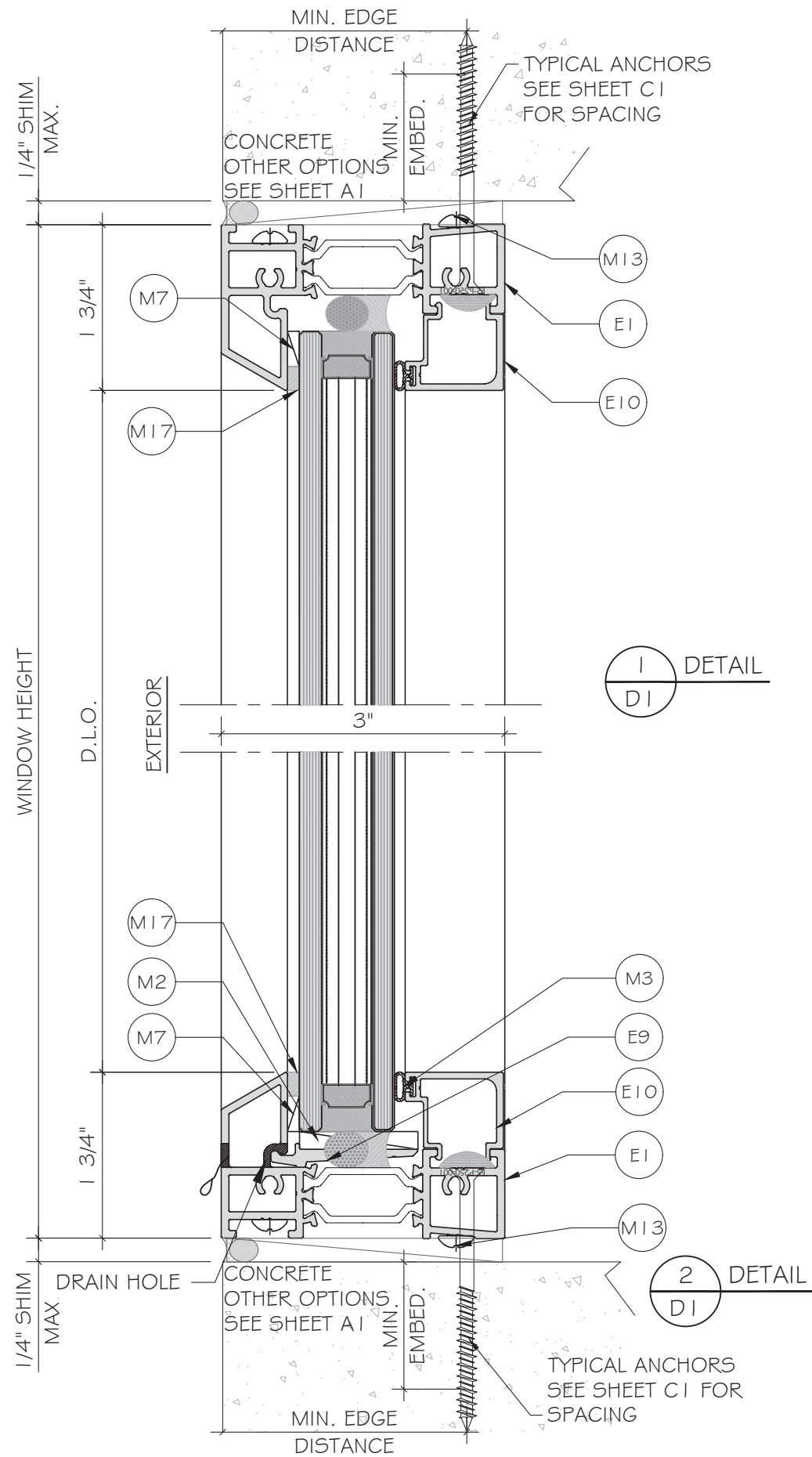
FLORIDA APPROVAL:
FL#40520.1

YIPING WANG
 FLORIDA REGISTRATION #55983
 C.A.N. 68899
 November 03rd, 2023

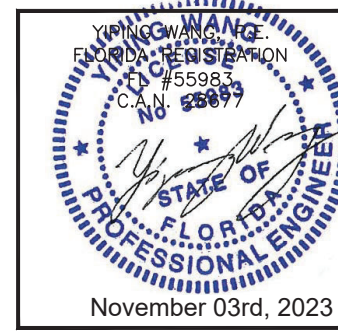
MCY ENGINEERING, INC.
 GLAZING CONSULTANTS
 12781 MIRAMAR PKWY, STE. 301
 MIRAMAR, FL 33027 P: 305.271.0117
 www.MCYEngineering.com mcy@mcyengineering.com

ES-P300 FIXED WINDOW - N.I.
E.S. WINDOWS, INC.
 10653 NE QUAYBRIDGE CT.
 MIAMI, FL 33138
 TEL. (305) 624-7775

Drawn Date	Scale
11.02.2023	
Drawn By	Description
JAMES	UPDATE TO FBC 2023
Rev. No.	Date
R2	11.02.2023
DRAWING NO.	
AD21-50	
Sheet No.	
11 OF 17	



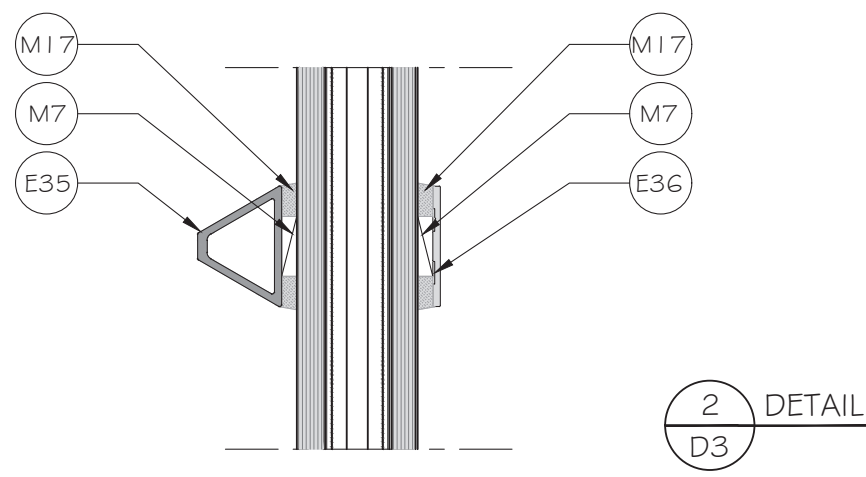
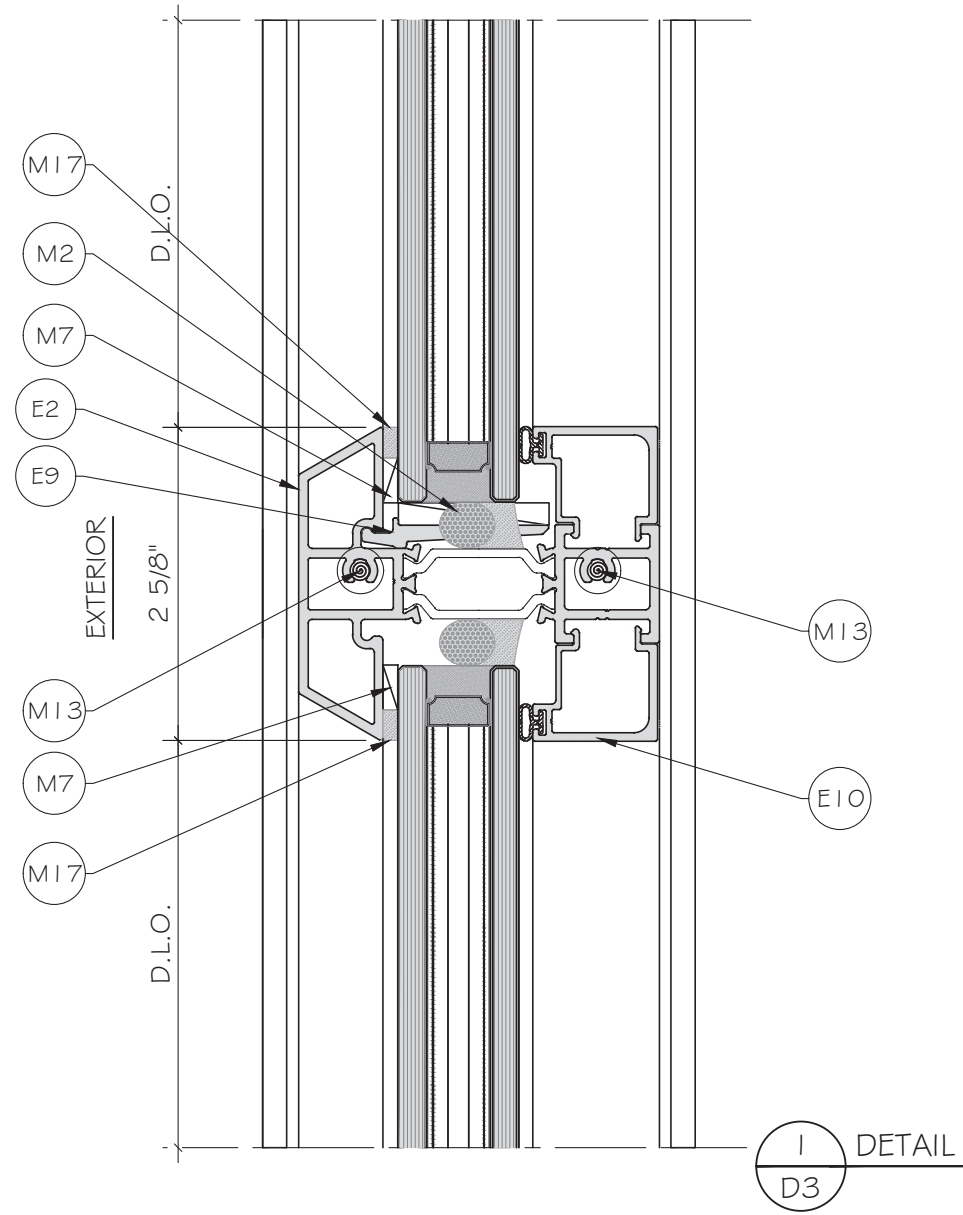
FLORIDA APPROVAL:
FL#40520.1



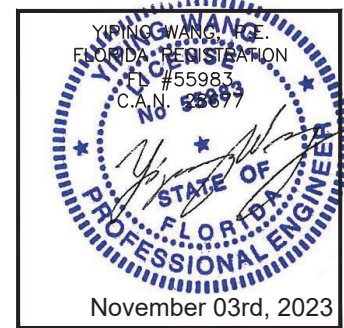
MCY ENGINEERING, INC.
GLAZING CONSULTANTS
12781 MIRAMAR PKWY, STE. 301
MIRAMAR, FL 33027 P: 305.271.0117
www.MCYEngineering.com mcy@mcyengineering.com

ES-P300 FIXED WINDOW - N.I.
E.S. WINDOWS, INC.
10653 NE QUAYBRIDGE CT.
MIAMI, FL 33138
TEL. (305) 624-7775

Drawn Date	Scale
11.02.2023	
Drawn By	Description
JAMES	UPDATE TO FBC 2023
Rev. No.	Date
R2	11.02.2023
DRAWING NO.	
AD21-50	
D1	
Sheet No.	
12 OF 17	



FLORIDA APPROVAL:
FL#40520.1

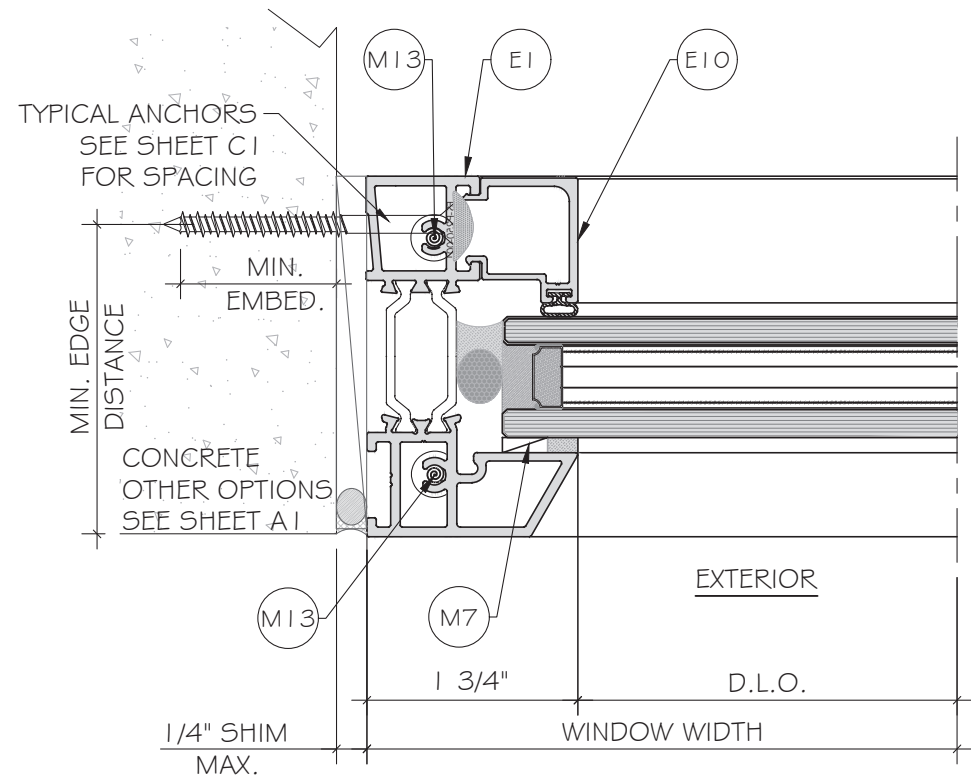


MCY ENGINEERING, INC.
GLAZING CONSULTANTS
12781 MIRAMAR PKWY, STE. 301
MIRAMAR, FL 33027 P: 305.271.0117
www.MCYEngineering.com mcy@mcyengineering.com

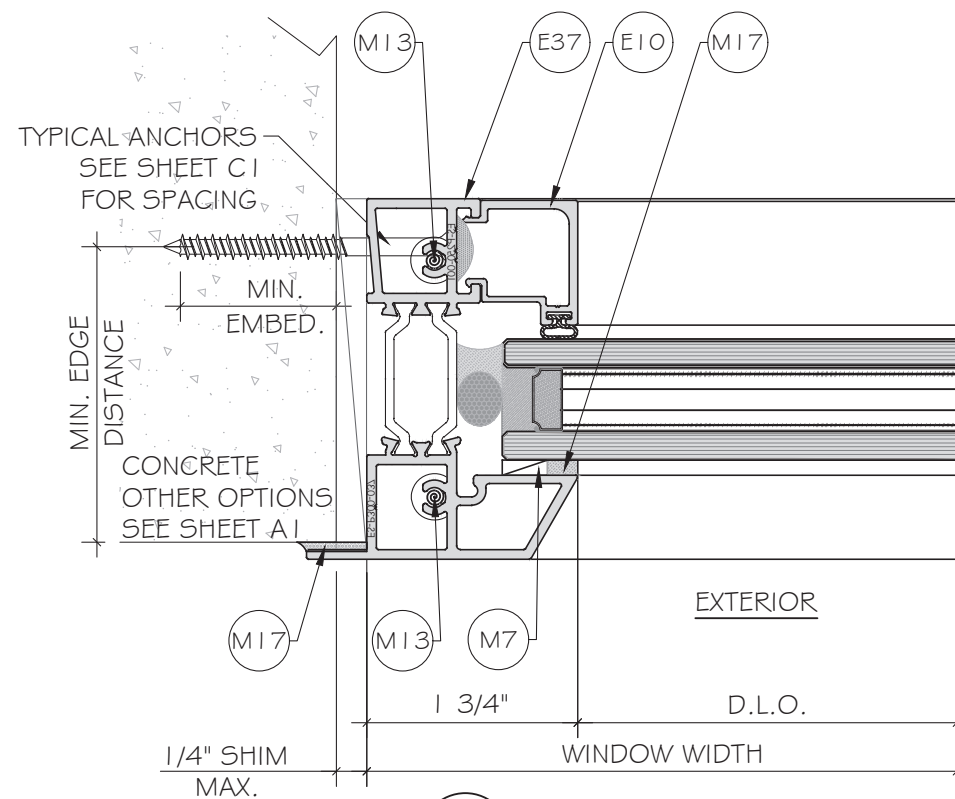
ES-P300 FIXED WINDOW - N.I.
E.S. WINDOWS, INC.
10653 NE QUAYBRIDGE CT.
MIAMI, FL 33138
TEL. (305) 624-7775

Rev. No.	Date	Drawn By	Description
R2	11.02.2023	JAMES	UPDATE TO FBC 2023

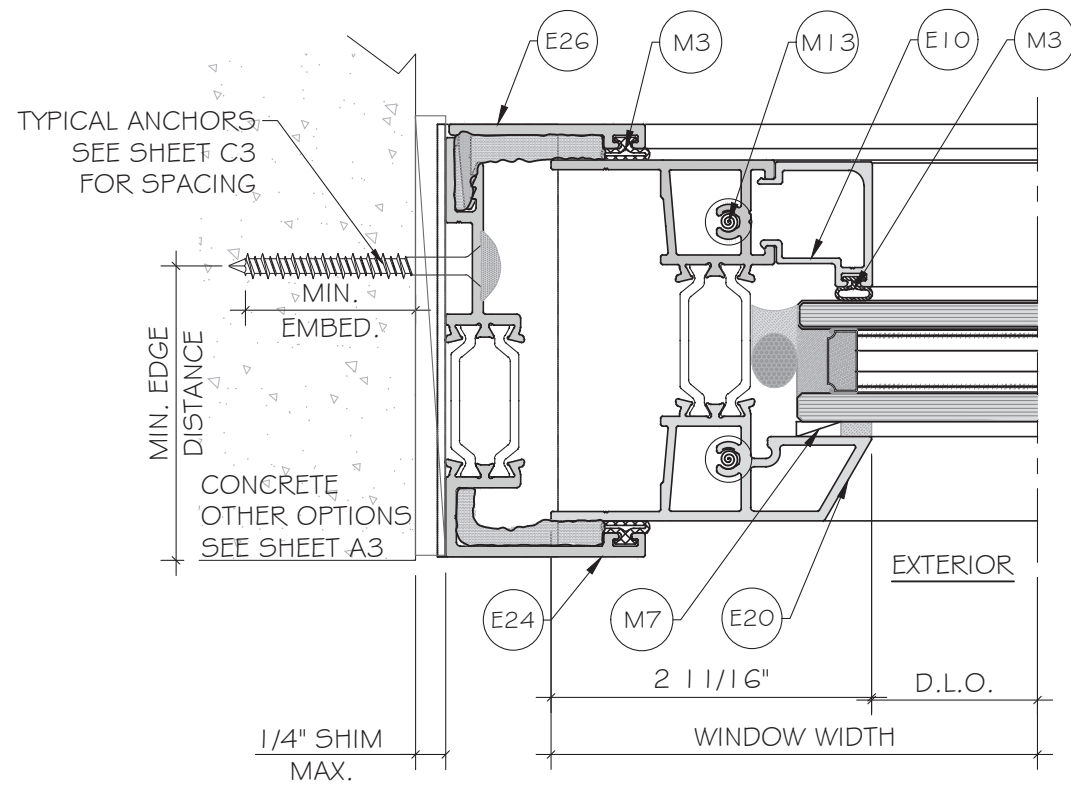
Drawn Date: 11.02.2023 Scale:
DRAWING NO. AD21-50
Sheet No. D3
14 OF 17



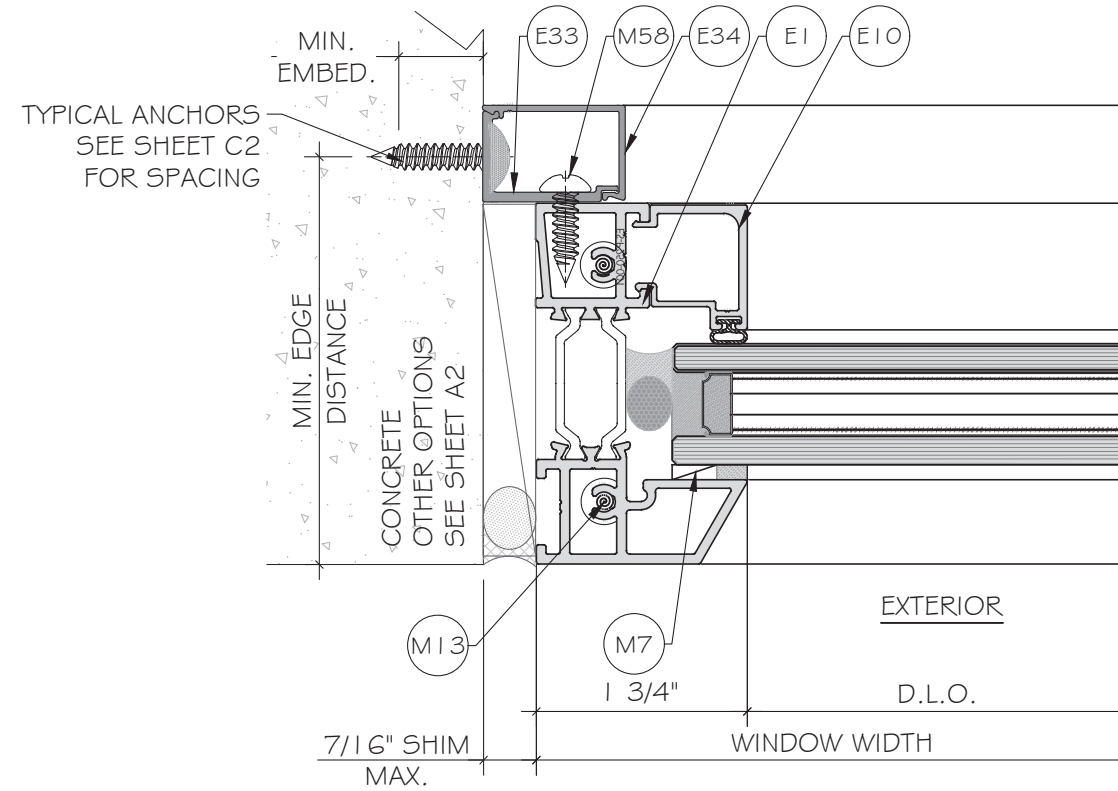
1
D4
DETAIL



1
D4
OPTION
DETAIL



2
D4
DETAIL



3
D4
DETAIL

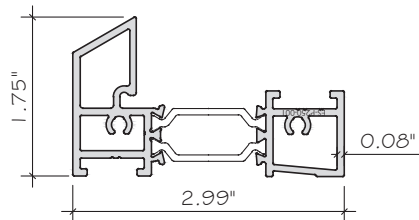
FLORIDA APPROVAL:
FL#40520.1

YIPING WANG
FLORIDA REGISTRATION
#55983
C.A.N. 25899
November 03rd, 2023

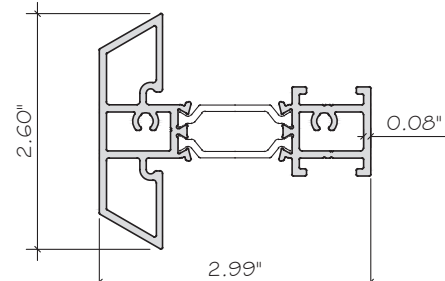
MCY ENGINEERING, INC.
GLAZING CONSULTANTS
12781 MIRAMAR PKWY, STE. 301
MIRAMAR, FL 33027 P: 305.271.0117
www.MCYEngineering.com mcy@mcyengineering.com

ES-P300 FIXED WINDOW - N.I.
E.S.WINDOWS, INC.
10653 NE QUAYBRIDGE CT.
MIAMI, FL 33138
TEL. (305) 624-7775

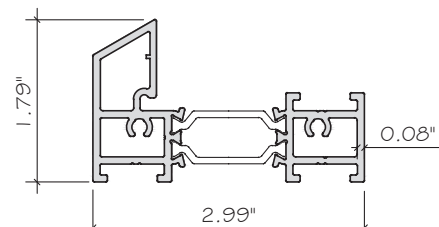
Rev. No.	Date	Drawn By	Description
R2	11.02.2023	JAMES	UPDATE TO FBC 2023
Drawn Date		Scale	
DRAWING NO. AD21-50			
Sheet No. D4			
15 OF 17			



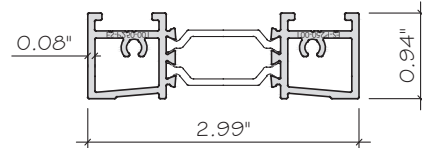
E1 FRAME FOR FIXED
ES-P300-501
ALUM. 6063-T6



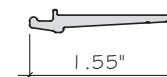
E2 INTERMEDIATE FOR FIXED
ES-P300-502
ALUM. 6063-T6



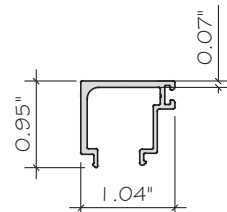
E3 INTERMEDIATE FOR FIXED | AWNING
ES-P300-503
ALUM. 6063-T6



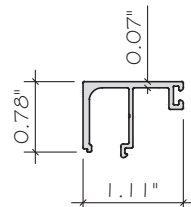
E6 JAMB FOR FIXED | AWNING
ES-P300-506
ALUM. 6063-T6



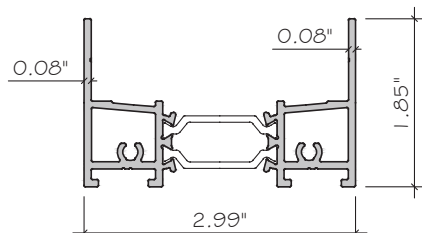
E9 SETTING CHAIR
ES-P300-002
ALUM. 6063-T6



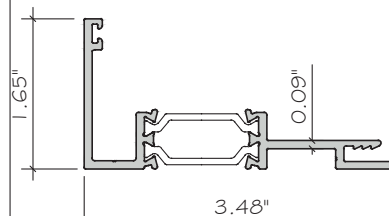
E10 NON-IMPACT GLASS STOP @FIXED
ES-P300-003
ALUM. 6063-T6



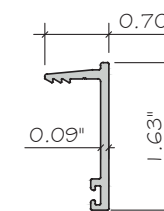
E13 NON-IMPACT GLASS STOP @SASH
ES-P300-014
ALUM. 6063-T5



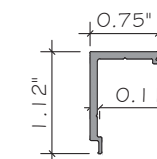
E23 FIXED | AWNING JAMB FOR RECEPTOR
ES-P300-522
ALUM. 6063-T6



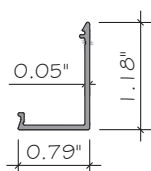
E24 RECEPTOR HEAD/JAMB
ES-P300-523
ALUM. 6063-T6



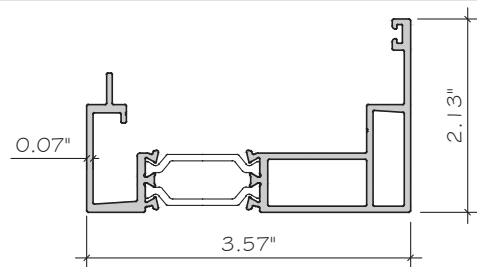
E26 RECEPTOR STOP
ES-P300-021
ALUM. 6063-T6



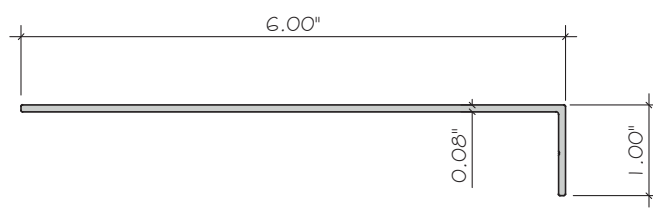
E33 STRAP ANCHOR
ES-P300-006
ALUM. 6063-T5



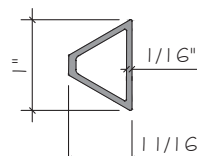
E34 STRAP ANCHOR COVER
ES-P300-007
ALUM. 6063-T5



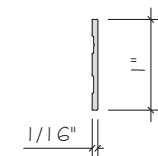
E25 RECEPTOR SILL
ES-P300-524
ALUM. 6063-T6



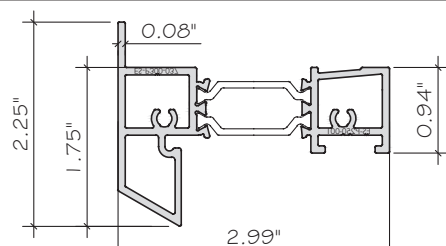
E31 END DAM
ES-CF-001
ALUM. 6063-T5



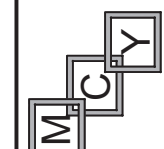
E35 MUNTIN
ES-P300-010
ALUM. 6063-T6



E36 ES-1014
ALUM. 6063-T6



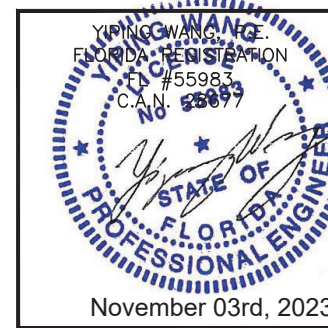
E37 ES-P300-534 FRAME
FOR FIXED WITH FLANGE
ALUM. 6063-T6



MCY ENGINEERING, INC.
GLAZING CONSULTANTS
12781 MIRAMAR PKWY, STE. 301
MIRAMAR, FL 33027 P: 305.271.0117
www.MCYEngineering.com mcy@mcyengineering.com

ES-P300 FIXED WINDOW - N.I.
E.S. WINDOWS, INC.
10653 NE QUAYBRIDGE CT.
MIAMI, FL 33138
TEL: (305) 624-7775

FLORIDA APPROVAL:
FL#40520.1



Rev. No.	Date	Drawn By	Description
R2	11.02.2023	JAMES	UPDATE TO FBC 2023
Drawn Date	11.02.2023	Scale	
DRAWING NO. AD21-50			
PART			
Sheet No. 16 OF 17			

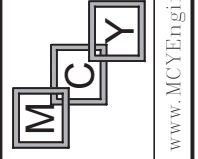
MATERIAL LIST

CODE	PART NUMBER	DESCRIPTION	MATERIAL
E1	ES-P300-501	FRAME FOR FIXED	ALUMINIUM 6063-T6
E2	ES-P300-502	INTERMEDIATE FOR FIXED	ALUMINIUM 6063-T6
E3	ES-P300-503	INTERMEDIATE FOR FIXED AWNING	ALUMINIUM 6063-T6
E6	ES-P300-506	JAMB FOR FIXED AWNING	ALUMINIUM 6063-T6
E9	ES-P300-002	SETTING CHAIR	ALUMINIUM 6063-T6
E10	ES-P300-003	NON-IMPACT GLASS STOP@FIXED	ALUMINIUM 6063-T6
E18	ES-P300-018	FRONT FRAME ADAPTOR	ALUMINIUM 6063-T6
E19	ES-P251-018	CORNER JOINT	ALUMINIUM 6063-T6
E20	ES-P300-513	FIXED WINDOW HEAD/JAMB FOR RECEPTOR	ALUMINIUM 6063-T6
E22	ES-P300-520	VENT HEAD/JAMB FOR RECEPTOR (SCREEN)	ALUMINIUM 6063-T6
E23	ES-P300-522	FIXED AWNING JAMB FOR RECEPTOR	ALUMINIUM 6063-T6
E24	ES-P300-523	RECEPTOR HEAD/JAMB	ALUMINIUM 6063-T6
E25	ES-P300-524	RECEPTOR SILL	ALUMINIUM 6063-T6
E26	ES-P300-021	RECEPTOR STOP	ALUMINIUM 6063-T6
E30	ES-EUR-001	EUROBAR	ALUMINIUM 6063-T6
E31	ES-CF-001	END DAM	ALUMINIUM 6063-T5
E33	ES-P300-006	STRAP ANCHOR	ALUMINIUM 6063-T5
E34	ES-P300-07	STRAP ANCHOR COVER	ALUMINIUM 6063-T5

MATERIAL LIST

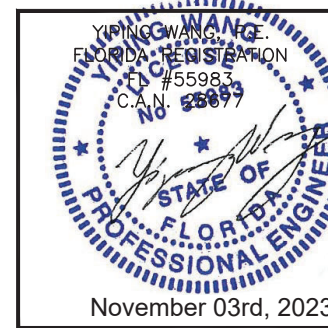
CODE	PART NUMBER	DESCRIPTION	MATERIAL
E35	ES-P300-010	MUNTIN	ALUMINIUM 6063-T6
E36	ES-1014	ES-1014	ALUMINIUM 6063-T6
E37	ES-P300-534	FRAME FOR FIXED WITH FLANGE	ALUMINIUM 6063-T6
M1	ES-SD451-G04	WEDGE GASKET@ GLASS PERIMETER SILICONE 60±3 SHORE A	SILICONE
M2	ES-4520-BO2A	SETTING BLOCK@ SILICONE 80±3 SHORE A	SILICONE
M3	ES-5008A	BUBBLE GASKET @ GLAZING BEAD & RECEPTOR	SILICONE 65±5 SHORE A
M7	1/8" x 1/2" TAPE	DOUBLE FACE TAPE	POLYURETHENE
M10	PJS-43-SS	CORNER KEY PJS-43-SS	STAINLESS STEEL
M11	WPSA-NI	RETICULATED FOAM 30PPI 3/4" x 3/4" x 2"	OPEN CELL FOAM
M12	1222-XXX	WEEP HOLE COVER	NYLON 6
M13	#10 x 1/4" PH	ASSEMBLY SCREW	STAINLESS STEEL
M14	#8 x 5/8" PH	SCREW FOR GLASS STOP	STAINLESS STEEL
M15	#8 x 1/2" FH	SCREW FOR CORNER KEY ES-P251-018	STAINLESS STEEL
M16	DOWSIL 983	STRUCTURAL SILICONE	SILICONE
M17	DOWSIL 791	SEALANT SILICONE	SILICONE
M18	BACKER ROD 1/2"	BACKER ROD OPEN CELL @ GLASS PERIMETER	POLYURETHENE
M58	#12 x 1/2" PH	SCREW FOR MUNTIN	STAINLESS STEEL

MCY ENGINEERING, INC.
GLAZING CONSULTANTS
12781 MIRAMAR PKWY, STE. 301
MIRAMAR, FL 33027 P: 305.271.0117
www.MCYEngineering.com mcy@mcyengineering.com



ES-P300 FIXED WINDOW - N.I.
E.S.WINDOWS, INC.
10653 NE QUAYBRIDGE CT.
MIAMI, FL 33138
TEL: (305) 624-7775

FLORIDA APPROVAL:
FL#40520.1



Rev. No.	Date	Drawn By	Description
R2	11.02.2023	JAMES	UPDATE TO FBC 2023
Drawn Date	11.02.2023	Scale	
DRAWING NO. AD21-50			
BOM			
Sheet No. 17 OF 17			