

# ES.WINDOWS

## ES-P300 CASEMENT WINDOW - L.M.I & S.M.I

**GENERAL NOTES:**

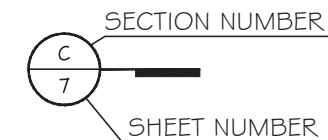
- THIS PRODUCT HAS BEEN DESIGNED AND TESTED TO COMPLY WITH THE REQUIREMENTS OF THE 7TH EDITION OF FLORIDA BUILDING CODE 2020 / 8TH EDITION OF FLORIDA BUILDING CODE 2023 INCLUDING HIGH VELOCITY HURRICANE ZONE (HVHZ).
- WINDOWS ARE RATED FOR LARGE AND SMALL MISSILE IMPACT. IMPACT SHUTTERS ARE NOT REQUIRED.
- THESE WINDOWS ARE APPROVED FOR AIR AND WATER INFILTRATION.
- ANCHORS SHALL BE AS LISTED, SPACED AS SHOWN ON DETAILS. ANCHORS EMBEDMENT TO BASE MATERIAL SHALL BE BEYOND WALL DRESSING OR STUCCO.
- ANCHORING OR LOADING CONDITIONS NOT SHOWN IN THESE DETAILS ARE NOT PART OF THIS APPROVAL.
- MATERIALS INCLUDING BUT NOT LIMITED TO STEEL / METAL SCREWS THAT COME INTO CONTACT WITH OTHER DISSIMILAR MATERIALS SHALL MEET THE REQUIREMENTS OF THE 7TH EDITION OF FLORIDA BUILDING CODE 2020 / 8TH EDITION OF FLORIDA BUILDING CODE 2023 SECTION AS APPLICABLE.
- METAL STRUCTURES BY OTHERS TO BE DESIGNED TO SUPPORT THE LOADS IMPOSED BY THIS GLAZING SYSTEM AND TO TRANSFER SUCH LOADS TO THE BUILDING MAIN STRUCTURE.
- ULTIMATE LOAD OBTAINED FROM ASCE 7-16 / ASCE 7-22, MULTIPLY BY 0.6 SHALL BE LESS THAN OR EQUAL TO MAX. DESIGN LOAD IN THIS DOCUMENT. THE DESIGN LOADS SHOWN IN THIS DOCUMENT ARE ALLOWABLE DESIGN LOADS.
- MANUFACTURER'S LABEL SHALL BE LOCATED ON A READILY VISIBLE LOCATION IN ACCORDANCE WITH SECTION 1709.9.3 OF FLORIDA BUILDING CODE LABELING TO COMPLY WITH SECTION 1709.9.2.
- SEALANT:  
ALL FRAME CORNERS, JOINTS, MULLION SEAMS AND PERIMETER GLAZING BEAD TO FRAME INSTALLATION FASTENERS SEALED WITH SILICONE SEALANT.

USE CHARTS AS FOLLOWS.

- STEP 1: DETERMINE DESIGN WIND LOAD REQUIREMENTS BASED ON WIND VELOCITY, BLDG. HEIGHT, WIND ZONE USING APPLICABLE ASCE 7-16 / ASCE 7-22 STANDARD OR WIND TUNNEL REPORTS.
- STEP 2: SEE SHEET E I FOR APPROVED TYPICAL ELEVATION & CONFIGURATION. SEE SHEET G I FOR GLASS OPTION AND DESIGN LOAD.
- STEP 3: ANCHOR OPTION SEE SHEET A I TO A3. ANCHOR SPACING SEE SHEET C I TO C3.
- STEP 4: THE LOWEST VALUE RESULTING FROM STEPS 2 & 3 THAT EXCEED THE DESIGN WIND PRESSURES DETERMINED THRU STEP 1 SHALL APPLY TO ENTIRE SYSTEM.

**ABBREVIATIONS AND SYMBOLS**

- G.B. - GLASS BITE
- D.L.O. - DAYLITE OPENING
- F.H. - FRAME HEIGHT
- F.W. - FRAME WIDTH
- W/ - WITH
- W/O - WITHOUT
- O.C. - ON CENTER



**LIMITATIONS OF USE**

A- THIS PRODUCT EVALUATION DOCUMENT (P.E.D.) PREPARED BY THIS ENGINEER IS GENERIC AND DOES NOT PROVIDE INFORMATION FOR A SITE SPECIFIC PROJECT; I.E. WHERE THE SITE CONDITIONS DEVIATE FROM THE P.E.D.

B- CONTRACTOR TO BE RESPONSIBLE FOR THE SELECTION, PURCHASE AND INSTALLATION OF THIS PRODUCT BASED ON THIS PRODUCT EVALUATION PROVIDED HE/SHE DOES NOT DEVIATE FROM THE CONDITIONS DETAILED ON THIS DOCUMENT.

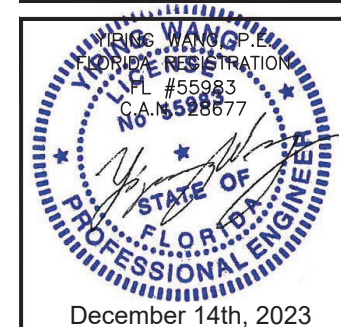
C- THIS PRODUCT EVALUATION DOCUMENT WILL BE CONSIDERED INVALID IF ALTERED BY ANY MEANS.

D- SITE SPECIFIC PROJECTS SHALL BE PREPARED BY A FLORIDA REGISTERED ENGINEER OR ARCHITECT WHICH WILL BECOME THE ENGINEER OF RECORD (E.O.R.) FOR THE PROJECT AND WHO WILL BE RESPONSIBLE FOR THE PROPER USE OF THE P.E.D.

E- THIS P.E.D. SHALL BEAR THE DATE AND ORIGINAL SEAL AND SIGNATURE OF THE PROFESSIONAL ENGINEER OF RECORD THAT PREPARED IT.

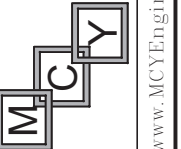
FLORIDA APPROVAL:

FL40521.1



**ES-P300 CASEMENT WINDOW - L.M.I & S.M.I**

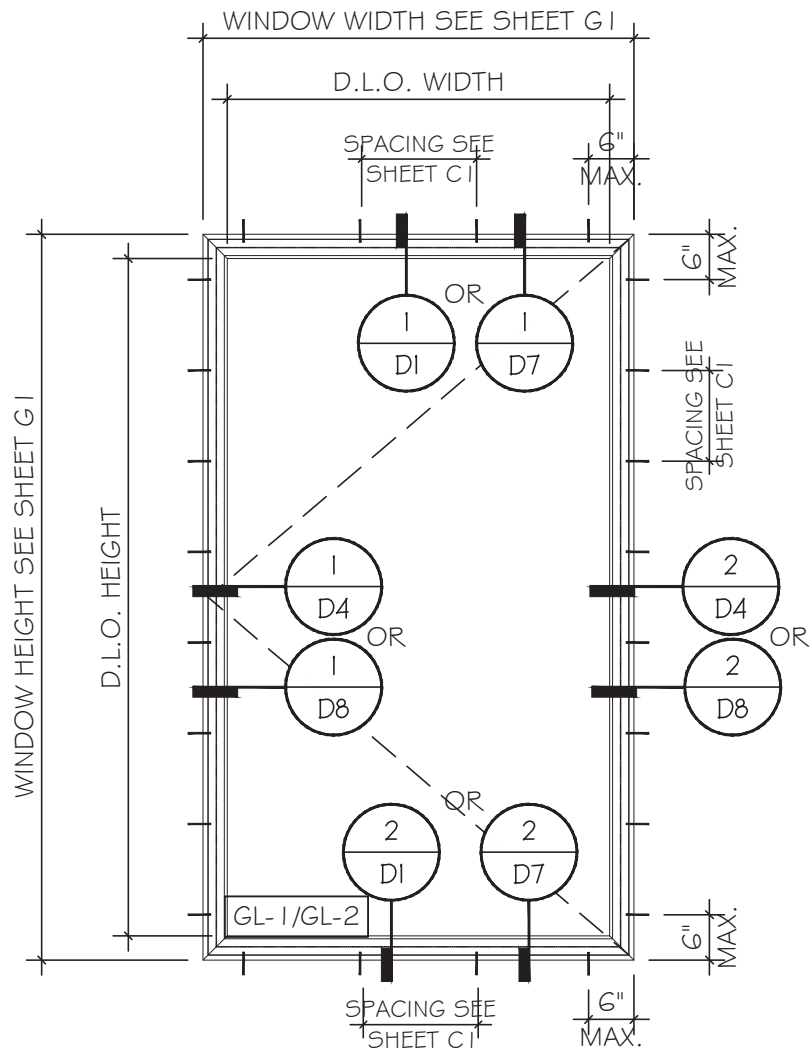
**E.S.WINDOWS, INC.**  
10653 NE QUAYBRIDGE CT.  
MIAMI, FL 33138  
TEL. (305) 624-7775



**MCY ENGINEERING, INC.**  
GLAZING CONSULTANTS

12781 MIRAMAR PKWY, STE. 301  
MIRAMAR, FL 33027 P: 305.271.0117  
www.MCYEngineering.com mcy@mcyengineering.com

Drawn Date	Scale	Rev. No.	Date	Drawn By	Description
11.02.2023		R2	11.02.2023	JAMES	UPDATE FEB 2023
DRAWING NO.					
AD21-51					
COVER					
Sheet No.					
1 OF 20					

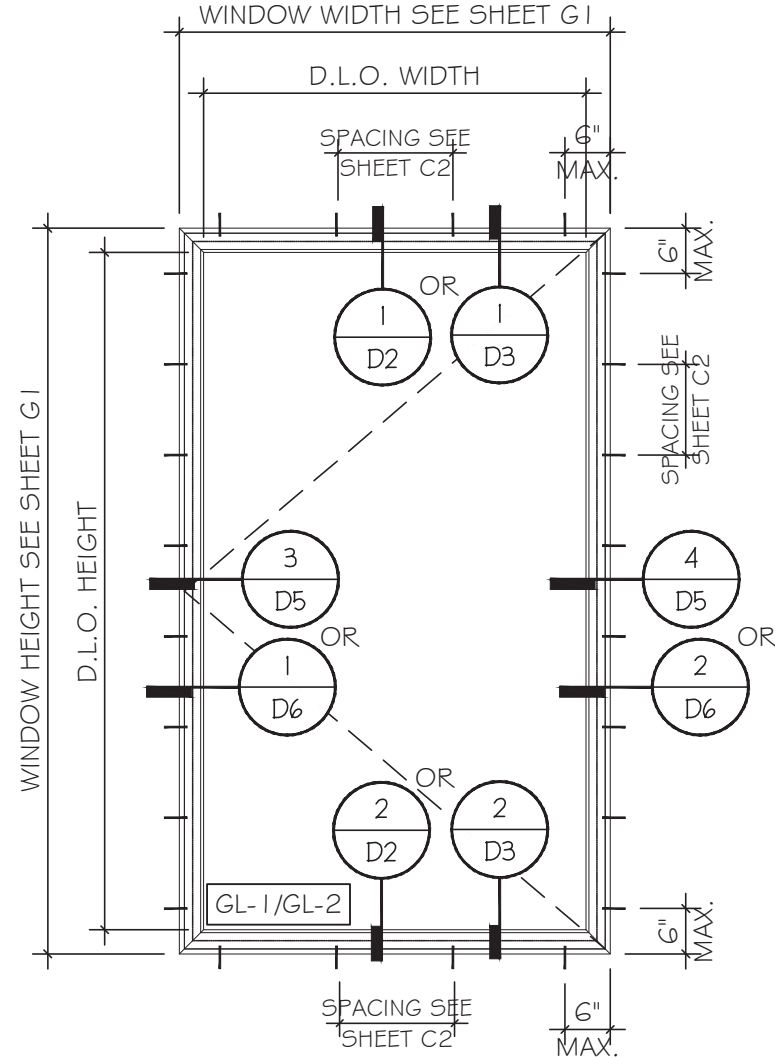


**DIRECT ANCHOR**

TYPICAL WINDOW ELEVATIONS

D.L.O. HEIGHT = WINDOW HEIGHT - 6 3/8"

D.L.O. WIDTH = WINDOW WIDTH - 6 3/8"

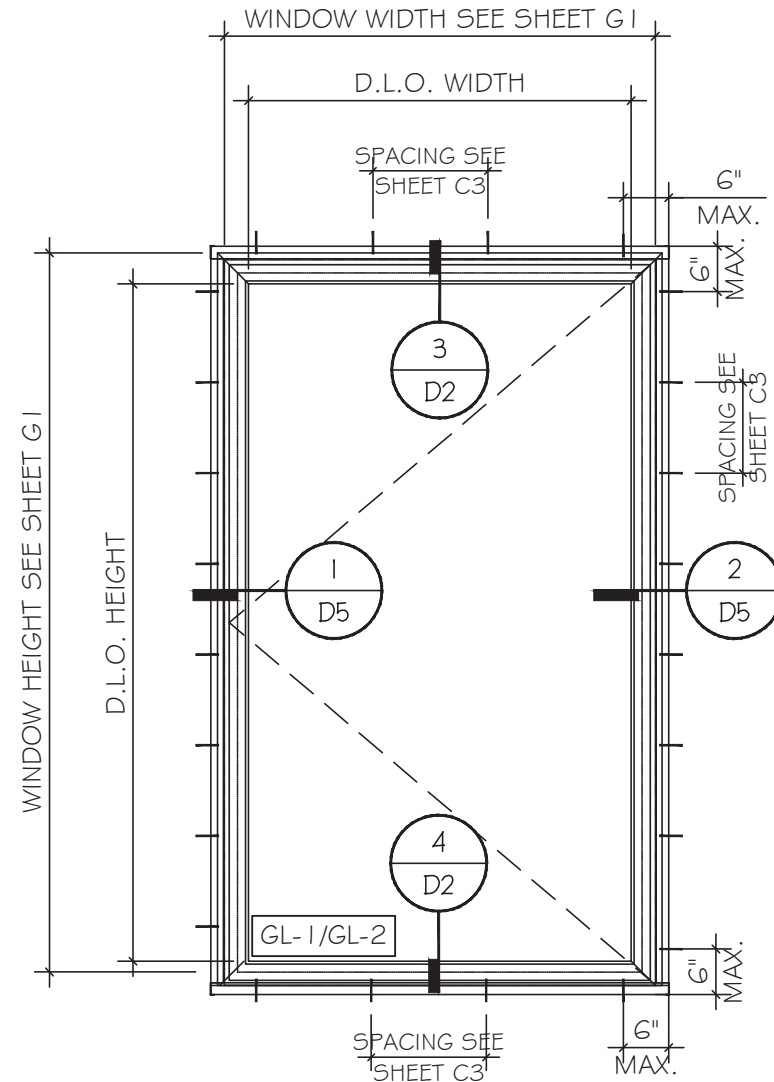


**ANCHOR WITH STRAP**

TYPICAL WINDOW ELEVATIONS

D.L.O. HEIGHT = WINDOW HEIGHT - 6 3/8"

D.L.O. WIDTH = WINDOW WIDTH - 6 3/8"



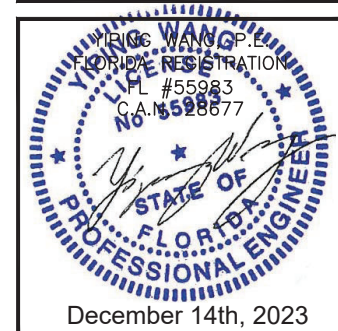
**ANCHOR WITH RECEPTOR**

TYPICAL WINDOW ELEVATIONS

D.L.O. HEIGHT = WINDOW HEIGHT - 7 5/16"

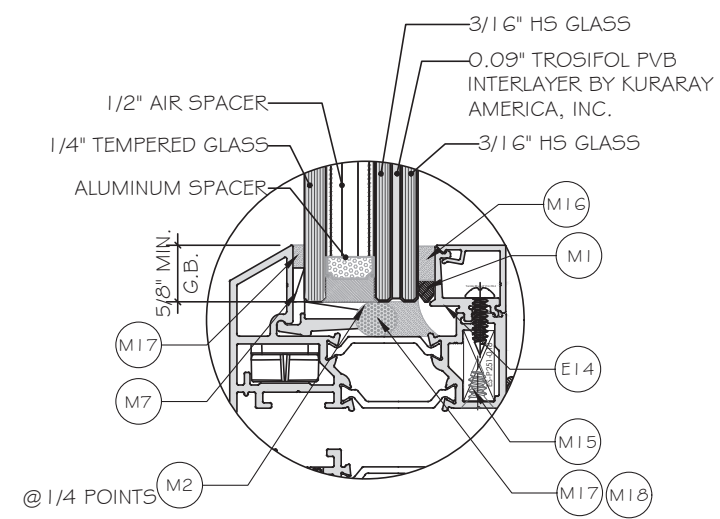
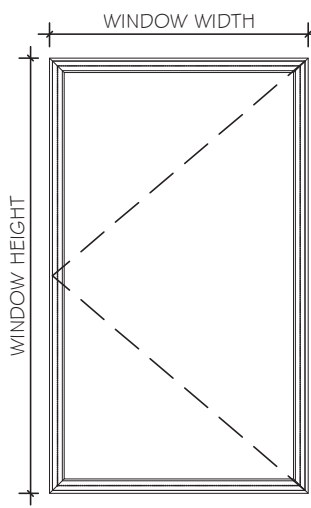
D.L.O. WIDTH = WINDOW WIDTH - 8 1/4"

FLORIDA APPROVAL:  
**FL40521.1**

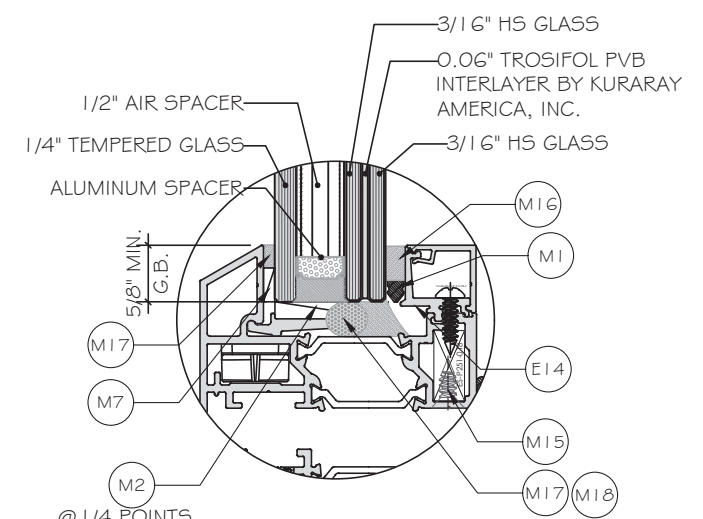


Rev. No.	Date	Drawn By	Description
R2	11.02.2023	JAMES	UPDATE FEB 2023
Drawn Date		Scale	
DRAWING NO.			
AD21-51			
E1			
Sheet No.			
2 OF 20			

CASEMENT WINDOW ALLOWABLE PRESSURE			
WINDOW HEIGHT	WINDOW WIDTH	ALLOWABLE LOAD	
INCH	INCH	PSF EXT (+)	PSF INT (-)
72.0	36.0	80.0	90.0
	42.0		
	48.0		
78.0	36.0	80.0	90.0
	42.0		
	48.0		
84.0	36.0	80.0	90.0
	42.0		
	48.0		



GLASS TYPE "GL-1" FOR LMI  
 1 3/16" INSULATED LAMINATED GLASS  
 LAMINATED ON INTERIOR SIDE



GLASS TYPE "GL-2" FOR SMI  
 1 3/16" INSULATED LAMINATED GLASS  
 LAMINATED ON INTERIOR SIDE

NOTE:  
 GLASS COMPLIES WITH ASTM E1300-16  
 (3 SEC. GUSTS).

FLORIDA APPROVAL:  
 FL40521.1

YONG WANG, P.E.  
 FLORIDA REGISTRATION  
 FL #55983  
 C.A. #559877  
 STATE OF FLORIDA  
 PROFESSIONAL ENGINEER  
 December 14th, 2023

**MCY ENGINEERING, INC.**  
 GLAZING CONSULTANTS  
 12781 MIRAMAR PKWY, STE. 301  
 MIRAMAR, FL 33027 P: 305.271.0117  
 www.MCYEngineering.com mcy@mcyengineering.com

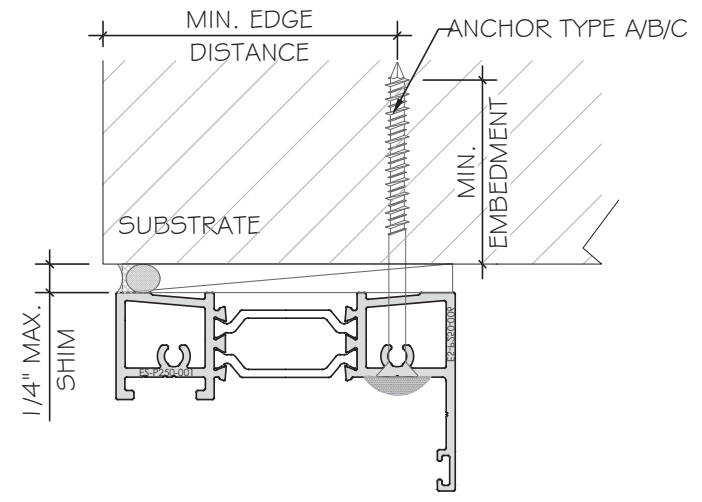
**ES-P300 CASEMENT WINDOW - L.M.I & S.M.I.**  
 E.S. WINDOWS, INC.  
 10653 NE QUAYBRIDGE CT.  
 MIAMI, FL 33138  
 TEL. (305) 624-7775

Rev. No.	Date	Drawn By	Description
R2	11.02.2023	JAMES	UPDATE FEB 2023
Drawn Date		Scale	
11.02.2023			
DRAWING NO.			
AD21-51			
G1			
Sheet No.		3 OF 20	

ANCHOR CHART FOR ANCHOR TYPE "A" "B" "C"

WINDOW HEIGHT INCH	WINDOW WIDTH INCH	ALLOWABLE LOAD (EXT+)PSF	ALLOWABLE LOAD (INT-)PSF	ANCHOR SPACING (INCH)		
				TYPE A INTO WOOD	TYPE B INTO CONCRETE	TYPE C INTO METAL
72.0	36.0	80.0	90.0	14	14	14
	42.0	80.0	90.0	12	12	12
	48.0	80.0	90.0	10	10	10
78.0	36.0	80.0	90.0	14	14	14
	42.0	80.0	90.0	12	12	12
	48.0	80.0	90.0	10	10	10
84.0	36.0	80.0	90.0	14	14	14
	42.0	80.0	90.0	12	12	12
	48.0	80.0	90.0	10	10	10

SEE SHEET A1 FOR ANCHOR TYPES



FLORIDA APPROVAL:  
FL40521.1

ES-P300 CASEMENT WINDOW - L.M.I & S.M.I

E.S.WINDOWS, INC.  
10653 NE QUAYBRIDGE CT.  
MIAMI, FL 33138  
TEL.(305) 624-7775

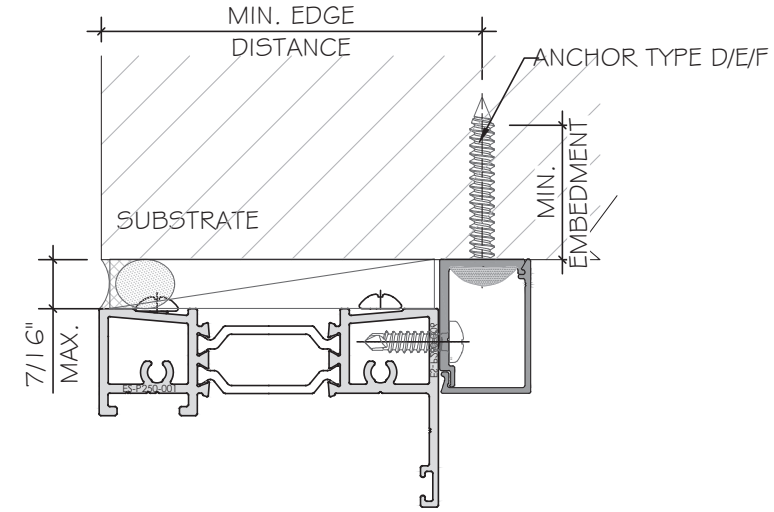
**MCY ENGINEERING, INC.**  
GLAZING CONSULTANTS  
12781 MIRAMAR PKWY, STE. 301  
MIRAMAR, FL 33027 P: 305.271.0117  
www.MCYEngineering.com mcy@mcyengineering.com

Drawn Date	11.02.2023	Scale	
DRAWING NO.	AD21-51		
Sheet No.	4 OF 20		
Rev. No.	R2	Date	11.02.2023
Drawn By	JAMES	Description	LUPDATE FEB 2023

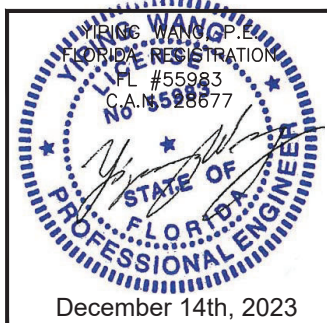
ANCHOR CHART FOR ANCHOR TYPE "D" "E" "F"

WINDOW HEIGHT INCH	WINDOW WIDTH INCH	ALLOWABLE LOAD (EXT+)PSF	ALLOWABLE LOAD (INT-)PSF	ANCHOR SPACING (INCH)		
				TYPE D INTO WOOD	TYPE E INTO CONCRETE	TYPE F INTO METAL
72.0	36.0	80.0	90.0	12	16	16
	42.0	80.0	90.0	10	14	16
	48.0	80.0	90.0	9	13	15
78.0	36.0	80.0	90.0	12	16	16
	42.0	80.0	90.0	10	14	16
	48.0	80.0	90.0	9	13	15
84.0	36.0	80.0	90.0	12	16	16
	42.0	80.0	90.0	10	14	16
	48.0	80.0	90.0	9	13	15

SEE SHEET A2 FOR ANCHOR TYPES

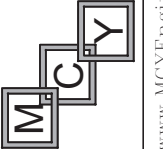


FLORIDA APPROVAL:  
FL40521.1



ES-P300 CASEMENT WINDOW - L.M.I & S.M.I

E.S.WINDOWS, INC.  
10653 NE QUAYBRIDGE CT.  
MIAMI, FL 33138  
TEL.(305) 624-7775



**MCY ENGINEERING, INC.**  
GLAZING CONSULTANTS  
12781 MIRAMAR PKWY, STE. 301  
MIRAMAR, FL 33027 P: 305.271.0117  
www.MCYEngineering.com mcy@mcyengineering.com

Rev. No.	Date	Drawn By	Description
R2	11.02.2023	JAMES	UPDATE FEB 2023

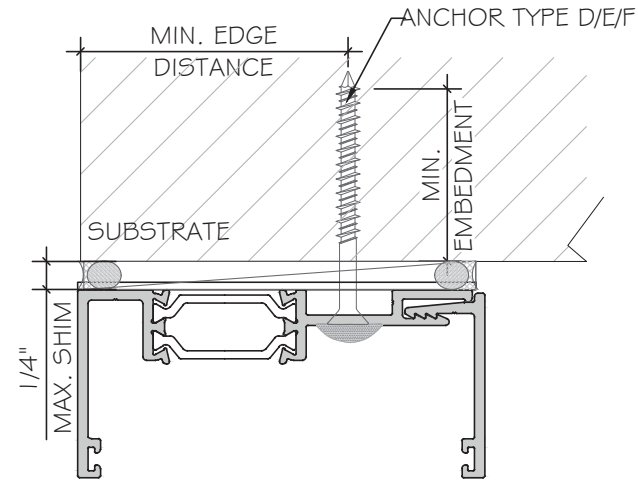
Drawn Date 11.02.2023	Scale
DRAWING NO. AD21-51	
Sheet No. 5 OF 20	



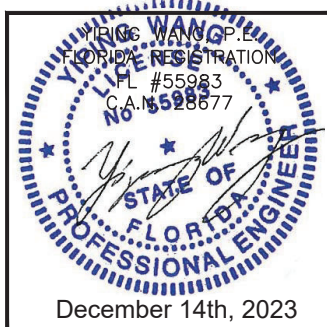
ANCHOR CHART FOR ANCHOR TYPE "D" "E" "F"

WINDOW HEIGHT INCH	WINDOW WIDTH INCH	ALLOWABLE LOAD (EXT+)PSF	ALLOWABLE LOAD (INT-)PSF	ANCHOR SPACING (INCH)		
				TYPE D INTO WOOD	TYPE E INTO CONCRETE	TYPE F INTO METAL
72.0	36.0	80.0	90.0	14	16	16
	42.0	80.0	90.0	12	16	16
	48.0	80.0	90.0	11	16	16
78.0	36.0	80.0	90.0	14	16	16
	42.0	80.0	90.0	12	16	16
	48.0	80.0	90.0	11	16	16
84.0	36.0	80.0	90.0	14	16	16
	42.0	80.0	90.0	12	16	16
	48.0	80.0	90.0	11	16	16

SEE SHEET A3 FOR ANCHOR TYPES

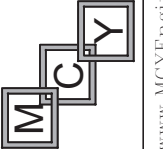


FLORIDA APPROVAL:  
FL40521.1



ES-P300 CASEMENT WINDOW - L.M.I & S.M.I

E.S.WINDOWS, INC.  
10653 NE QUAYBRIDGE CT.  
MIAMI, FL 33138  
TEL.(305) 624-7775



**MCY ENGINEERING, INC.**  
GLAZING CONSULTANTS

12781 MIRAMAR PKWY, STE. 301  
MIRAMAR, FL 33027 P: 305.271.0117  
www.MCYEngineering.com mcy@mcyengineering.com

Rev. No.	Date	Drawn By	Description
R2	11.02.2023	JAMES	UPDATE FEB 2023

Drawn Date 11.02.2023	Scale
DRAWING NO. AD21-51	
Sheet No. 6 OF 20	

**ANCHOR OPTIONS:**

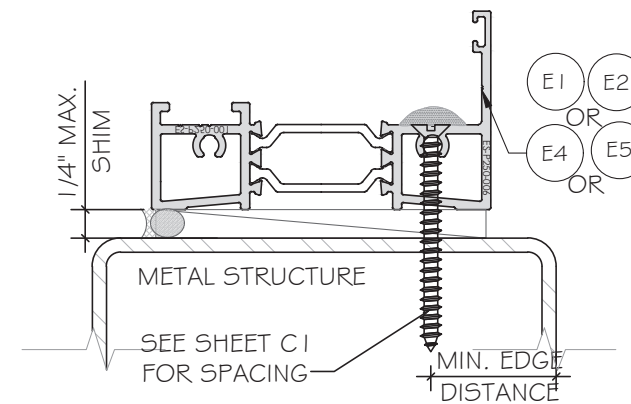
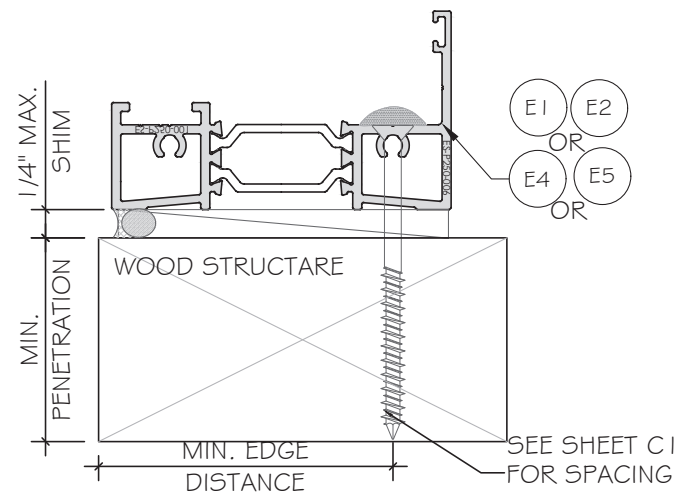
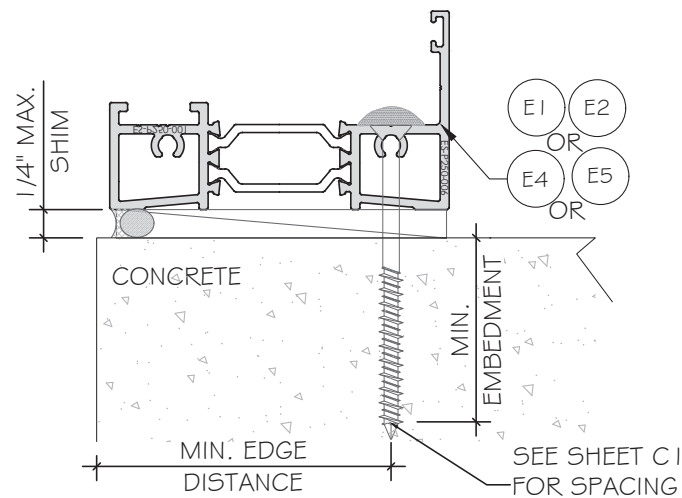
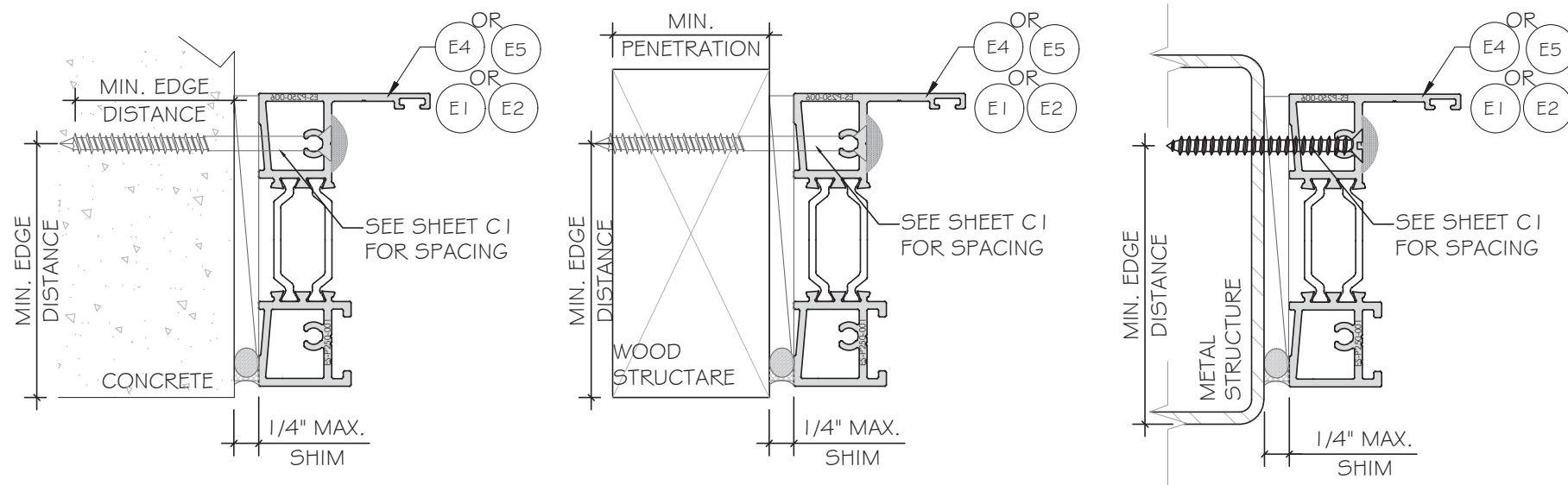
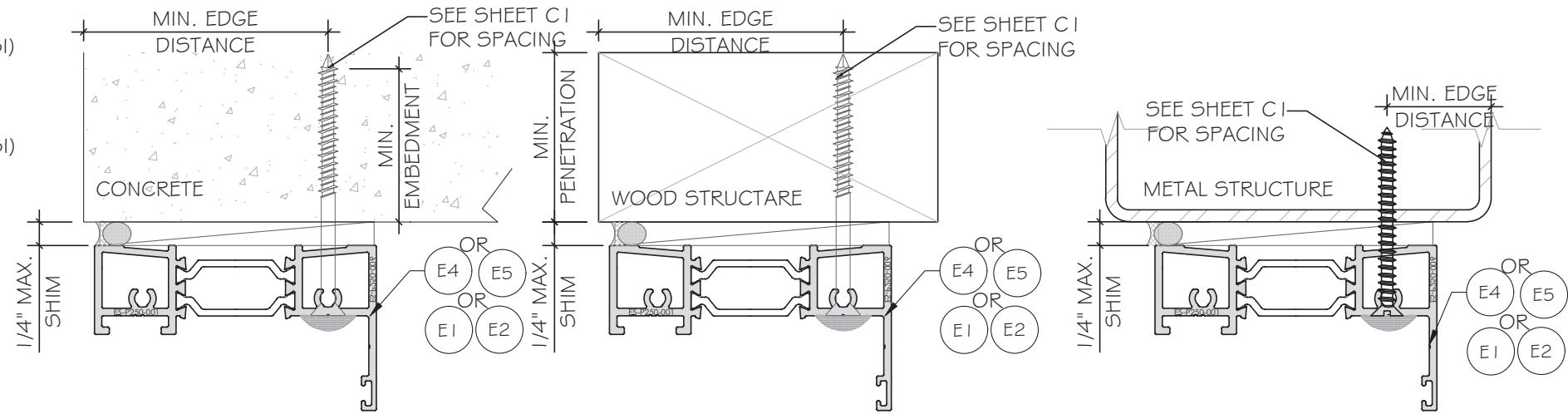
ANCHOR TYPE 'A' - 3/16" DIA. ULTRACON BY 'DEWALT'(Fu=164 KSI, Fy=117 KSI)  
 INTO 2BY WOOD BUCKS (SG=0.55 MIN.) WITH 1 1/2" MIN. PENETRATION.  
 OR THRU 1BY WOOD BUCK INTO CONCRETE WITH MIN. 1 3/4" EMBEDMENT.

ANCHOR TYPE 'B' - 3/16" DIA. ULTRACON BY 'DEWALT'(Fu=164 KSI, Fy=117 KSI)  
 DIRECTLY INTO CONCRETE Fc=3KSI MIN.  
 W/1 3/4" MIN. EMBEDMENT

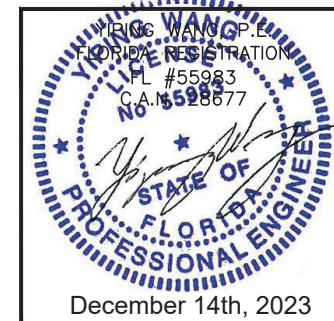
ANCHOR TYPE 'C' - #10 - SELF DRILLING SCREW GRADE 5  
 (Fu=120KSI, Fy=92KSI)  
 INTO F.B.C. APPROVED MULLIONS  
 OR INTO METAL STRUCTURES.  
 (3) THREADS MIN. PENETRATION BEYOND METAL SUBSTRATE

ALUMINUM: 1/8" THK. MIN. (6063-T5, MIN)  
 STEEL: 1/8" THK. MIN. (Fy=36KSI MIN)  
 STEEL: 1/8" THK. STL STRUCTURE  
 (STEEL IN CONTACT WITH ALUMINUM TO BE PLATED OR PAINTED)

TYPICAL EDGE DISTANCE  
 INTO CONCRETE = 2 1/2" MIN.  
 INTO WOOD = 1" MIN.  
 INTO METAL STRUCTURE = 1/2" MIN.



FLORIDA APPROVAL:  
**FL40521.1**



**ES-P300 CASEMENT WINDOW - L.M.I. & S.M.I.**

**E.S. WINDOWS, INC.**  
 10653 NE QUAYBRIDGE CT.  
 MIAMI, FL 33138  
 TEL. (305) 624-7775

**MCY ENGINEERING, INC.**  
 GLAZING CONSULTANTS  
 12781 MIRAMAR PKWY, STE. 301  
 MIRAMAR, FL 33027 P: 305.271.0117  
 www.MCYEngineering.com mcy@mcyengineering.com

Rev. No.	Date	Drawn By	Description
R2	11.02.2023	JAMES	UPDATE FEB 2023

Drawn Date	Scale
11.02.2023	
DRAWING NO.	
AD21-51	
Sheet No.	
7 OF 20	

**ANCHOR OPTIONS:**

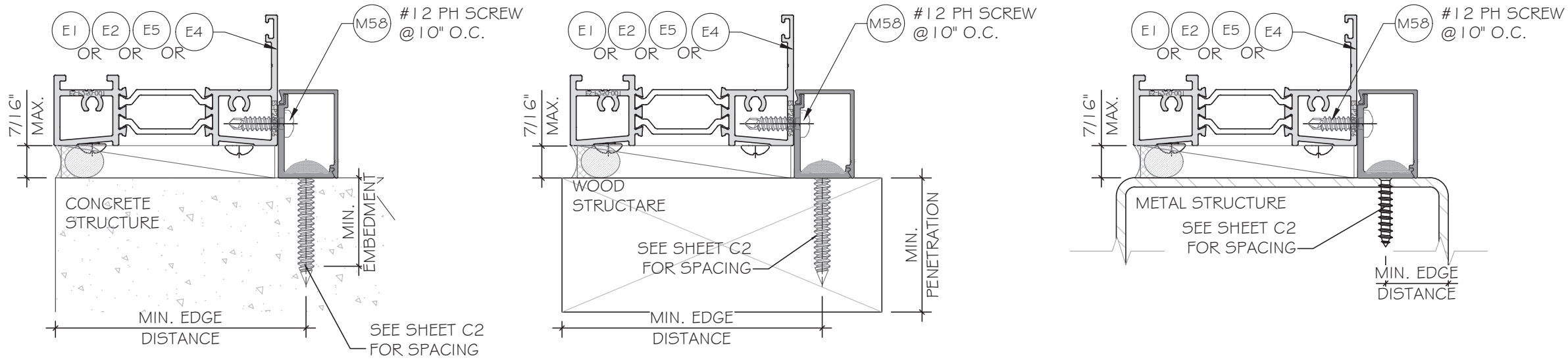
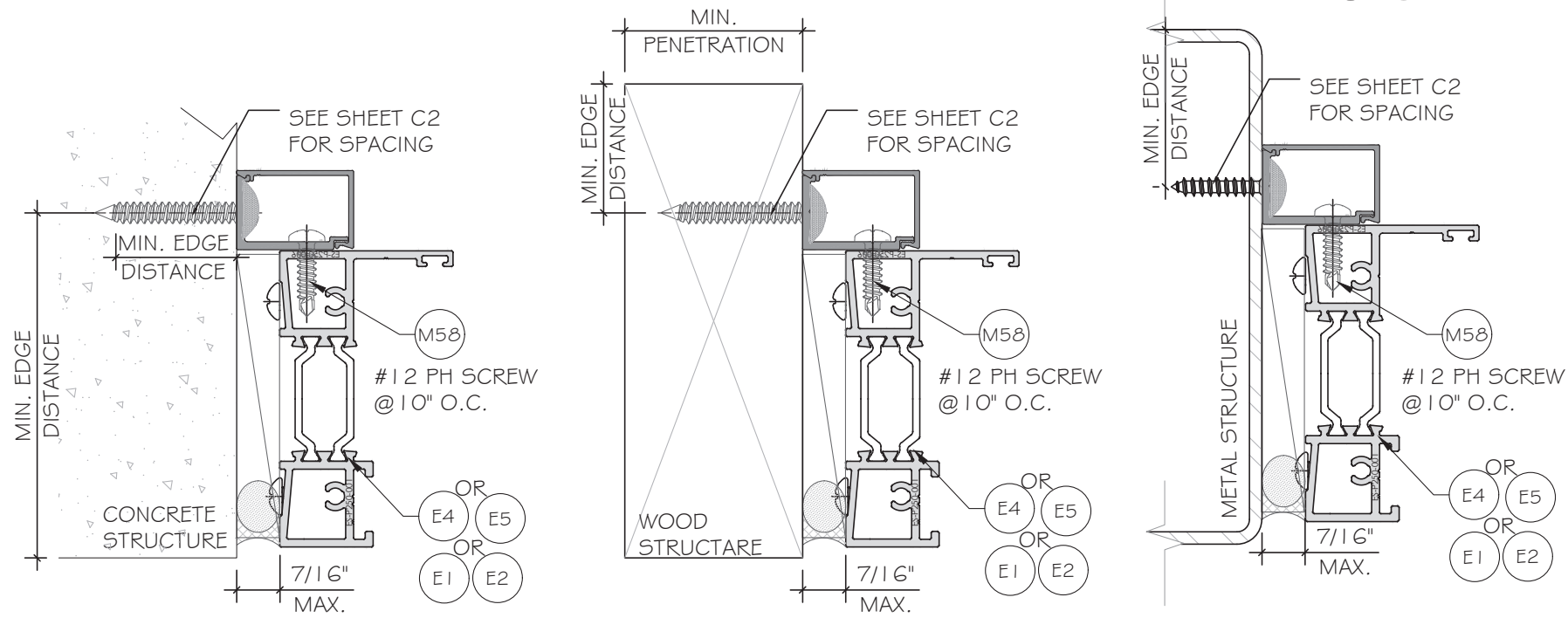
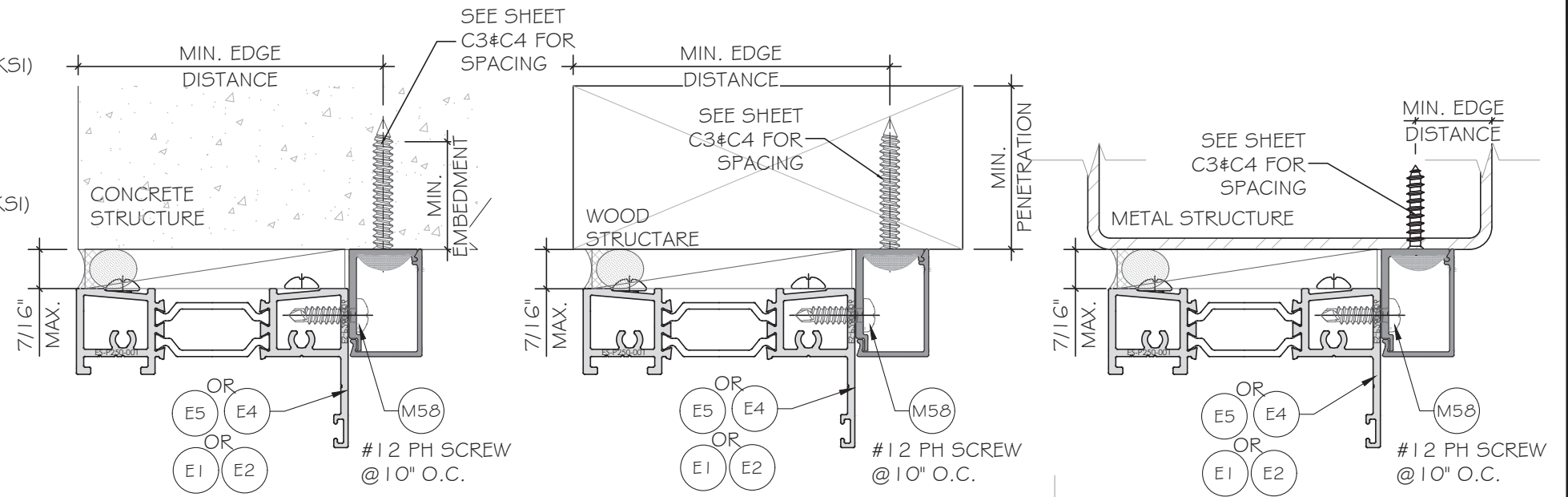
ANCHOR TYPE 'D' - 1/4" DIA. ULTRACON+ BY 'DEWALT'(Fu= 164KSI, Fy= 148KSI) INTO 2BY WOOD BUCKS (SG=0.55 MIN.) WITH 1 1/2" MIN. PENETRATION. OR THRU 1 BY WOOD BUCK INTO CONCRETE

ANCHOR TYPE 'E' - 1/4" DIA. ULTRACON+ BY 'DEWALT'(Fu= 164KSI, Fy= 148KSI) DIRECTLY INTO CONCRETE (fc=3KSI MIN.) W/1 3/4" MIN. EMBEDMENT

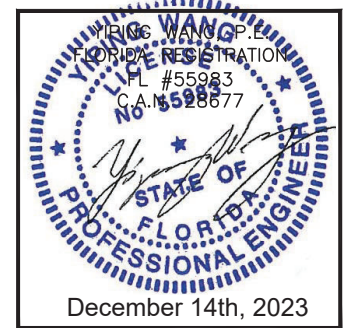
ANCHOR TYPE 'F' - 1/4" DIA. SEFL-DRILLING SCREWS, GRADE 5 (Fu= 120KSI, Fy=92KSI) INTO METAL STRUCTURES. (3) THREADS MIN. PENETRATION BEYOND METAL SUBSTRATE

ALUMINUM: 1/8" THK. MIN. (6063-T5, MIN)  
 STEEL: 1/8" THK. MIN. (Fy=36KSI MIN)  
 STEEL: 12GA STL STRUCTURE  
 (STEEL IN CONTACT WITH ALUMINUM TO BE PLATED OR PAINTED)

TYPICAL EDGE DISTANCE  
 INTO CONCRETE = 2 1/2" MIN.  
 INTO WOOD = 1" MIN.  
 INTO METAL STRUCTURE = 1/2" MIN.



FLORIDA APPROVAL:  
**FL40521.1**



**MCY ENGINEERING, INC.**  
 GLAZING CONSULTANTS  
 12781 MIRAMAR PKWY, STE. 301  
 MIRAMAR, FL 33027 P: 305.271.0117  
 www.MCYEngineering.com mcy@mcyengineering.com

**ES-P300 CASEMENT WINDOW - L.M.I & S.M.I.**  
 E.S.WINDOWS, INC.  
 10653 NE QUAYBRIDGE CT.  
 MIAMI, FL 33138  
 TEL. (305) 624-7775

Drawn Date	Scale
11.02.2023	
Drawn By	Description
JAMES	
Date	
11.02.2023	
Rev. No.	
R2	
DRAWING NO.	
AD21-51	
Sheet No.	
8 OF 20	



**ANCHOR OPTIONS:**

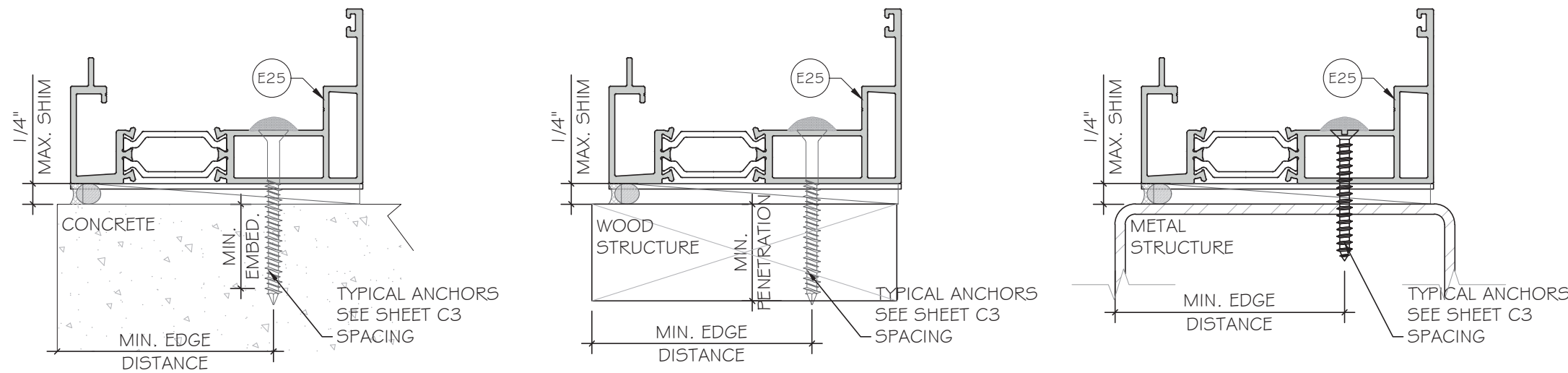
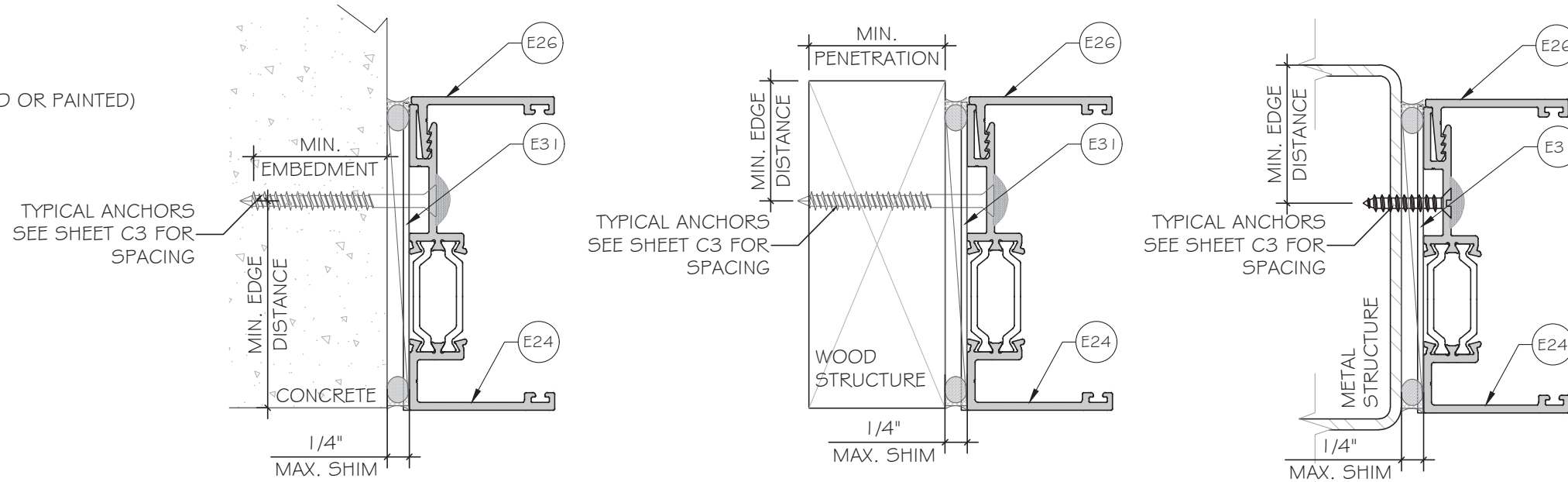
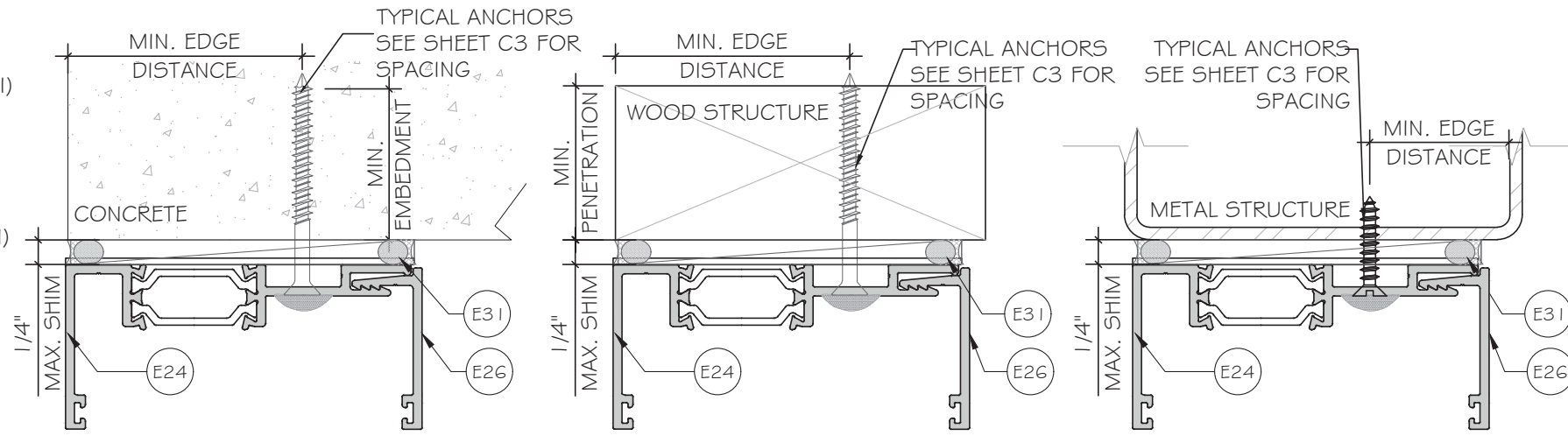
ANCHOR TYPE 'D' - 1/4" DIA. ULTRACON+ BY 'DEWALT'(Fu=164KSI, Fy=148KSI) INTO 2BY WOOD BUCKS (SG=0.55 MIN.) WITH 1 1/2" MIN. PENETRATION. OR THRU 1 BY WOOD BUCK INTO CONCRETE

ANCHOR TYPE 'E' - 1/4" DIA. ULTRACON+ BY 'DEWALT'(Fu=164KSI, Fy=148KSI) DIRECTLY INTO CONCRETE (fc=3KSI MIN.) W/1 3/4" MIN. EMBEDMENT

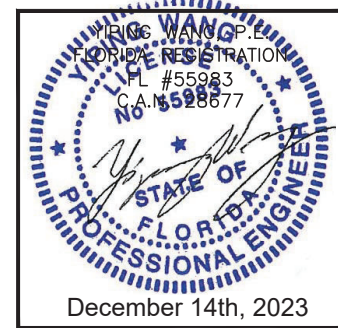
ANCHOR TYPE 'F' - 1/4" DIA. SEFL-DRILLING SCREWS, GRADE 5 (Fu=120KSI, Fy=92KSI) INTO METAL STRUCTURES. (3) THREADS MIN. PENETRATION BEYOND METAL SUBSTRATE

ALUMINUM: 1/8" THK. MIN. (6063-T5, MIN)  
 STEEL: 1/8" THK. MIN. (Fy=36KSI MIN)  
 STEEL: 12GA STL STRUCTURE  
 (STEEL IN CONTACT WITH ALUMINUM TO BE PLATED OR PAINTED)

TYPICAL EDGE DISTANCE INTO CONCRETE = 2 1/2" MIN.  
 INTO WOOD = 1" MIN.  
 INTO METAL STRUCTURE = 1/2" MIN.



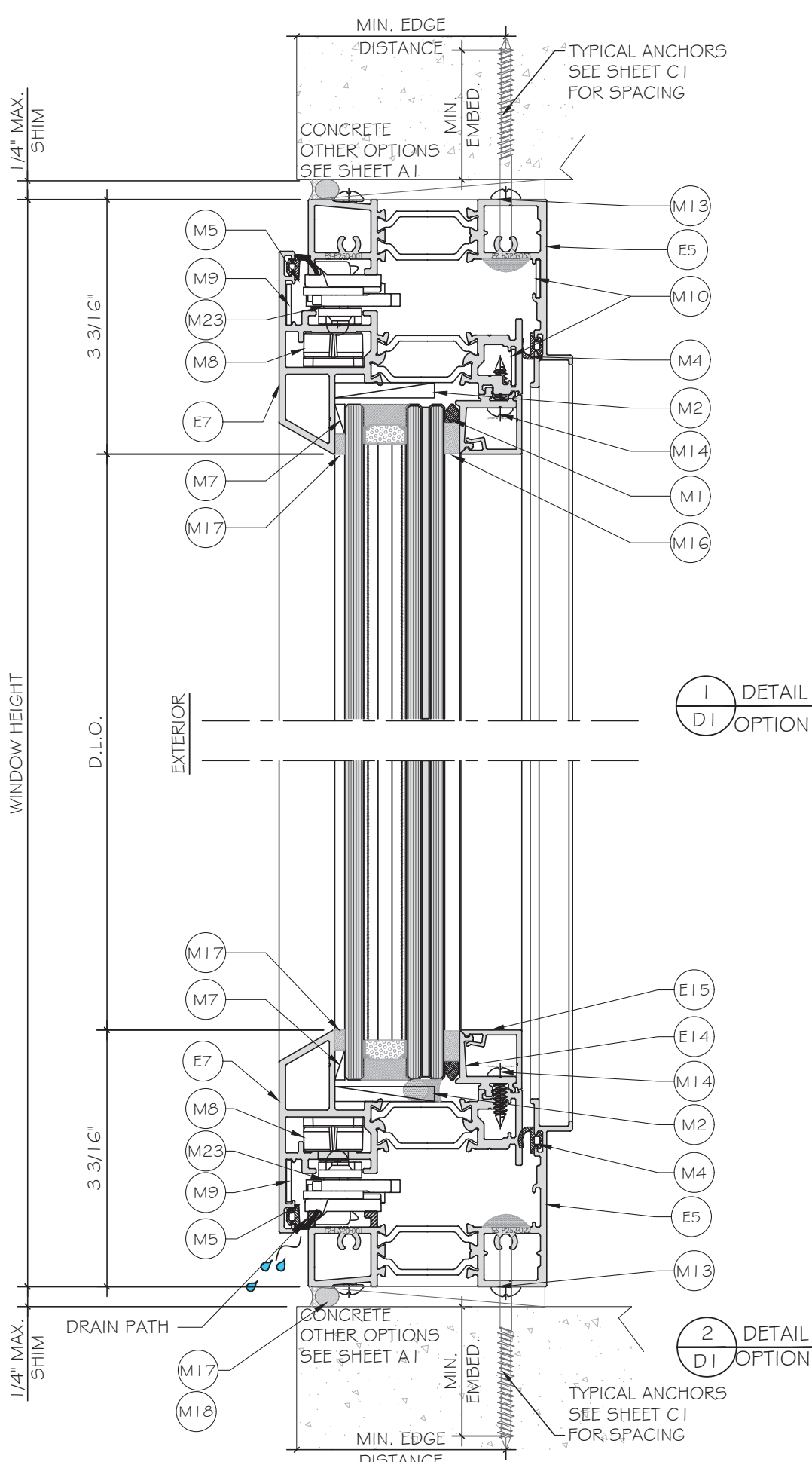
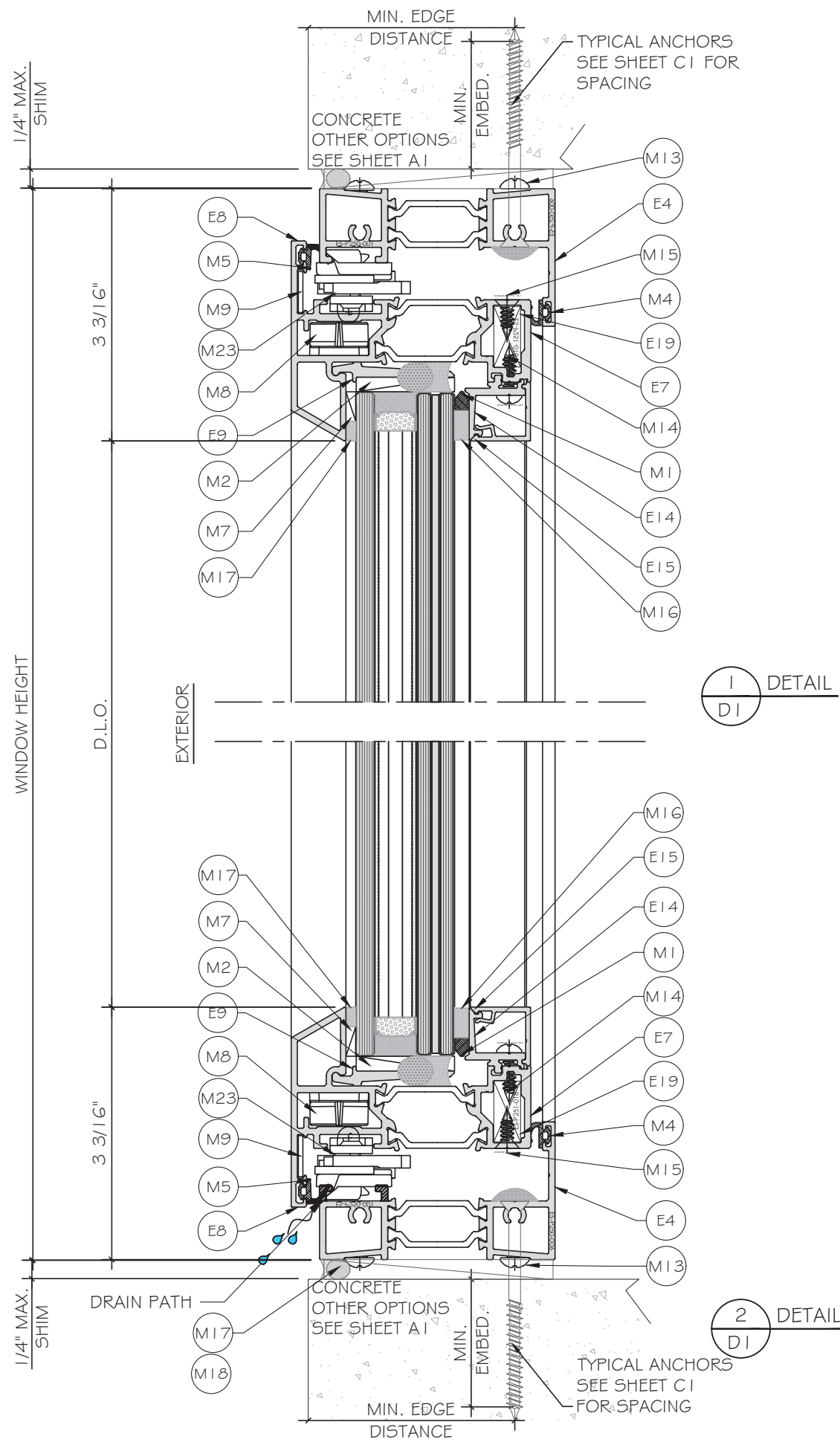
FLORIDA APPROVAL:  
**FL40521.1**



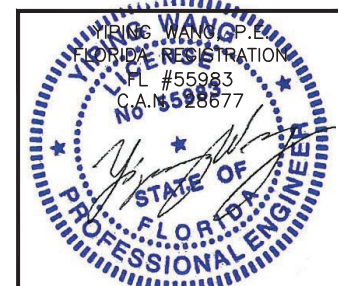
**MCY ENGINEERING, INC.**  
 GLAZING CONSULTANTS  
 12781 MIRAMAR PKWY, STE. 301  
 MIRAMAR, FL 33027  
 P: 305.271.0117  
 www.MCYEngineering.com mcy@mcyengineering.com

**ES-P300 CASEMENT WINDOW - L.M.I. & S.M.I.**  
**E.S. WINDOWS, INC.**  
 10653 NE QUAYBRIDGE CT.  
 MIAMI, FL 33138  
 TEL. (305) 624-7775

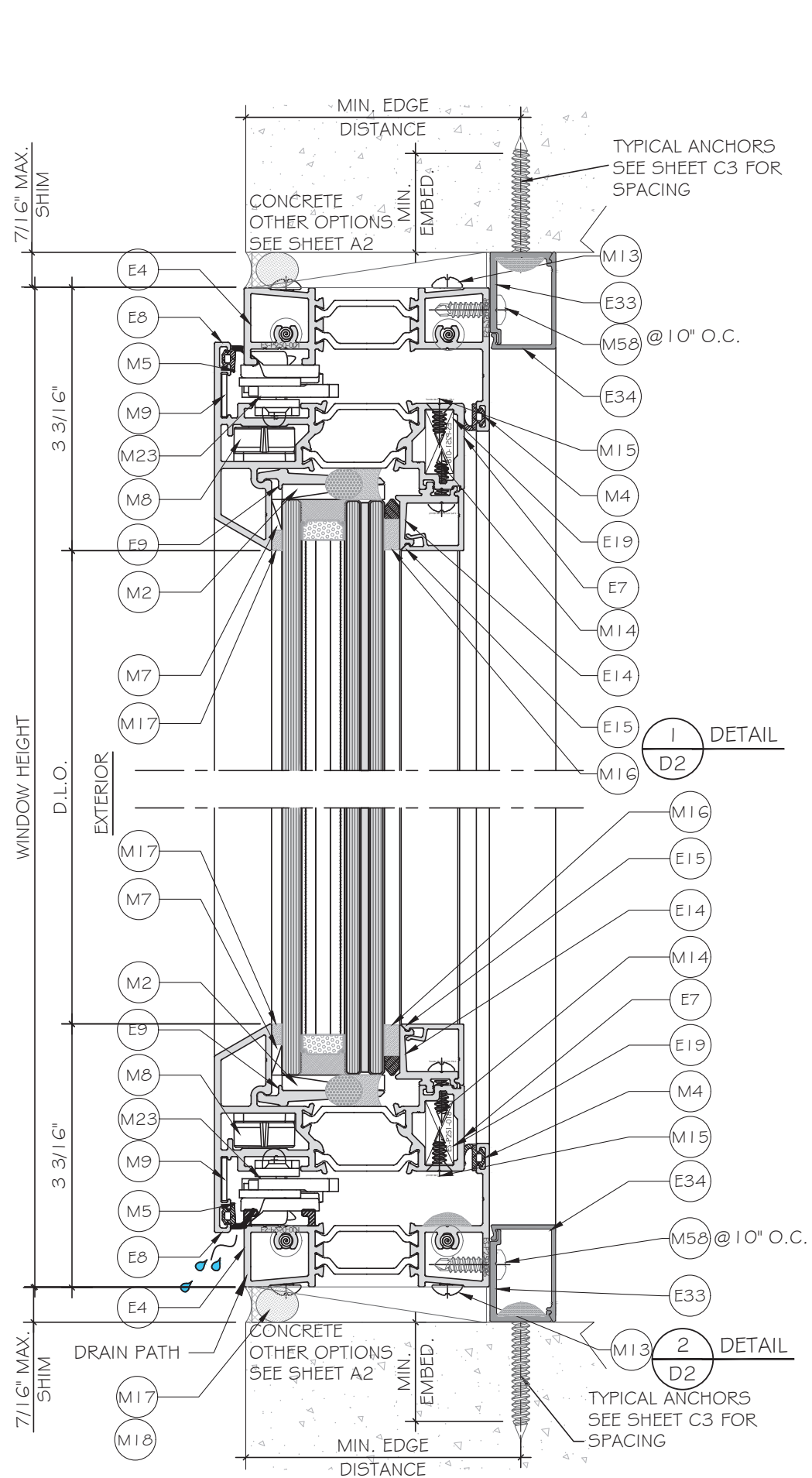
Drawn Date	Scale
11.02.2023	
Drawn By	Description
JAMES	
Date	
11.02.2023	
Rev. No.	
R2	
DRAWING NO.	
AD21-51	
Sheet No.	
9 OF 20	



FLORIDA APPROVAL:  
FL40521.1

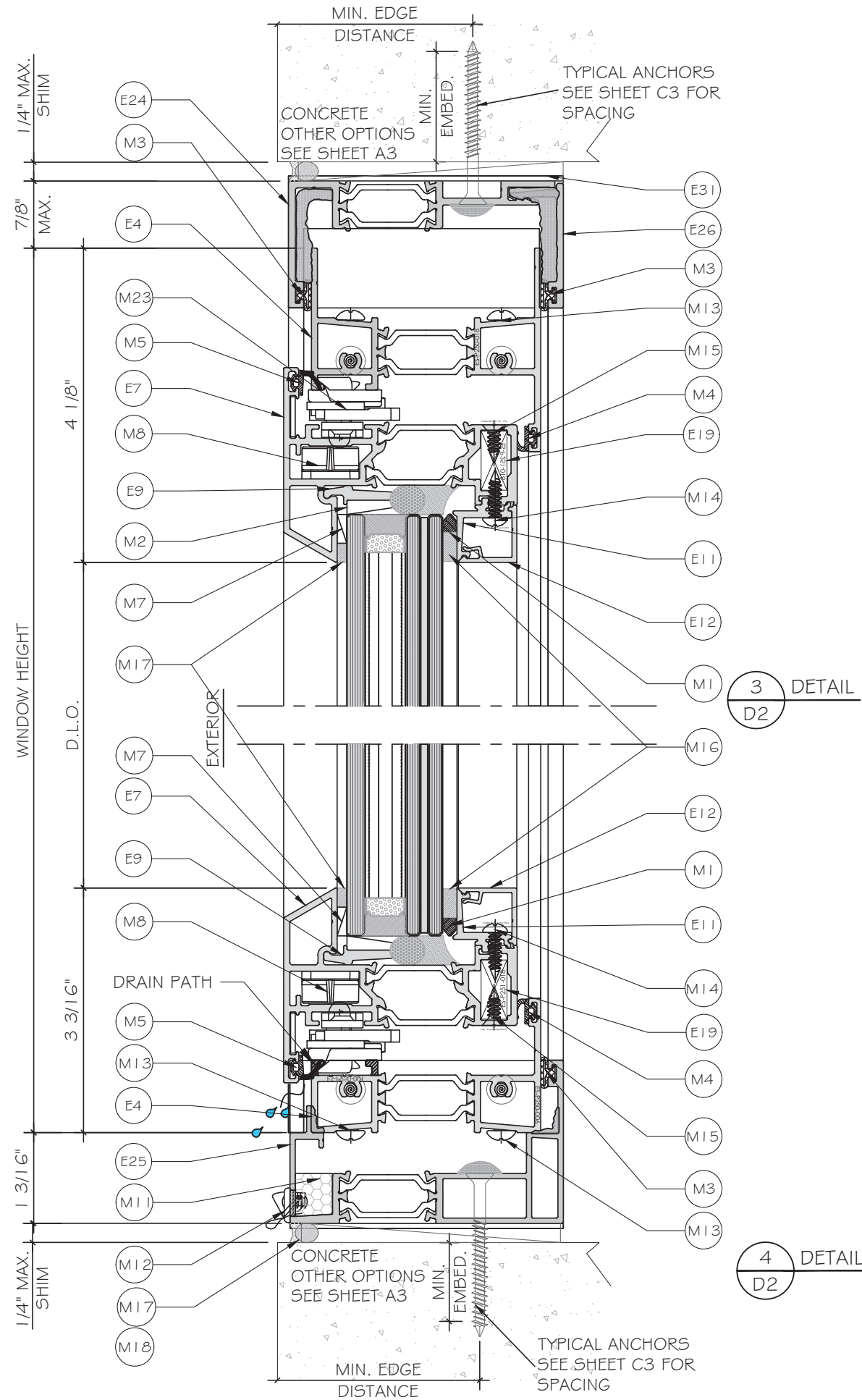


<b>MCY ENGINEERING, INC.</b> GLAZING CONSULTANTS 12781 MIRAMAR PKWY, STE. 301 MIRAMAR, FL 33027 P: 305.271.0117 www.MCYEngineering.com mcy@mcyengineering.com	
<b>ES-P300 CASEMENT WINDOW - L.M.I &amp; S.M.I</b> E.S. WINDOWS, INC. 10653 NE QUAYBRIDGE CT. MIAMI, FL 33138 TEL. (305) 624-7775	
Drawn Date	Scale
11.02.2023	
Drawn By	Description
JAMES	UPDATE FEB 2023
Rev. No.	Date
R2	11.02.2023
DRAWING NO. <b>AD21-51</b>	
Sheet No. <b>D1</b>	
<b>10 OF 20</b>	



1  
D2  
DETAIL

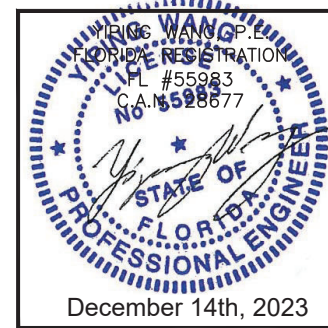
2  
D2  
DETAIL



3  
D2  
DETAIL

4  
D2  
DETAIL

FLORIDA APPROVAL:  
FL40521.1



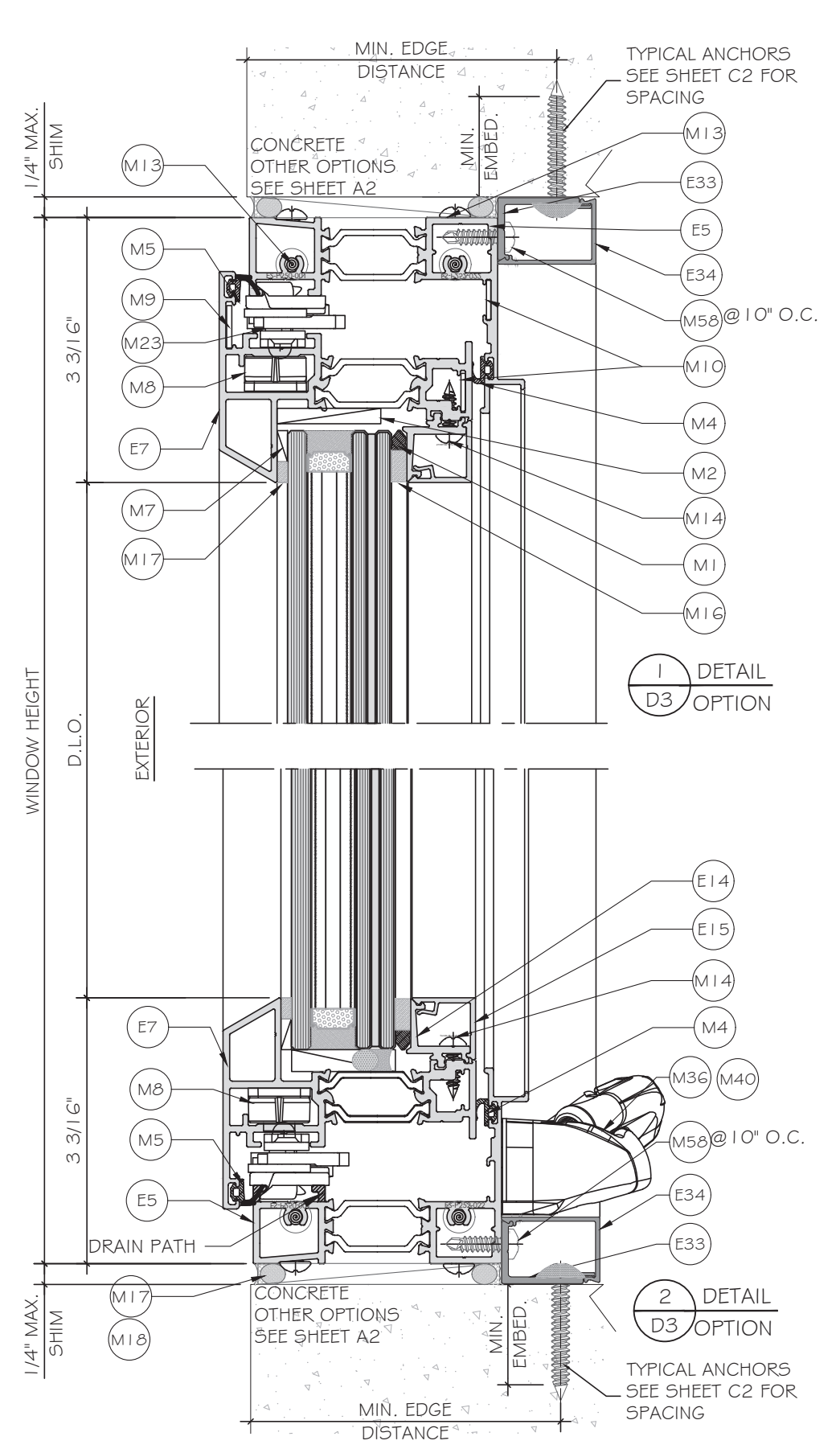
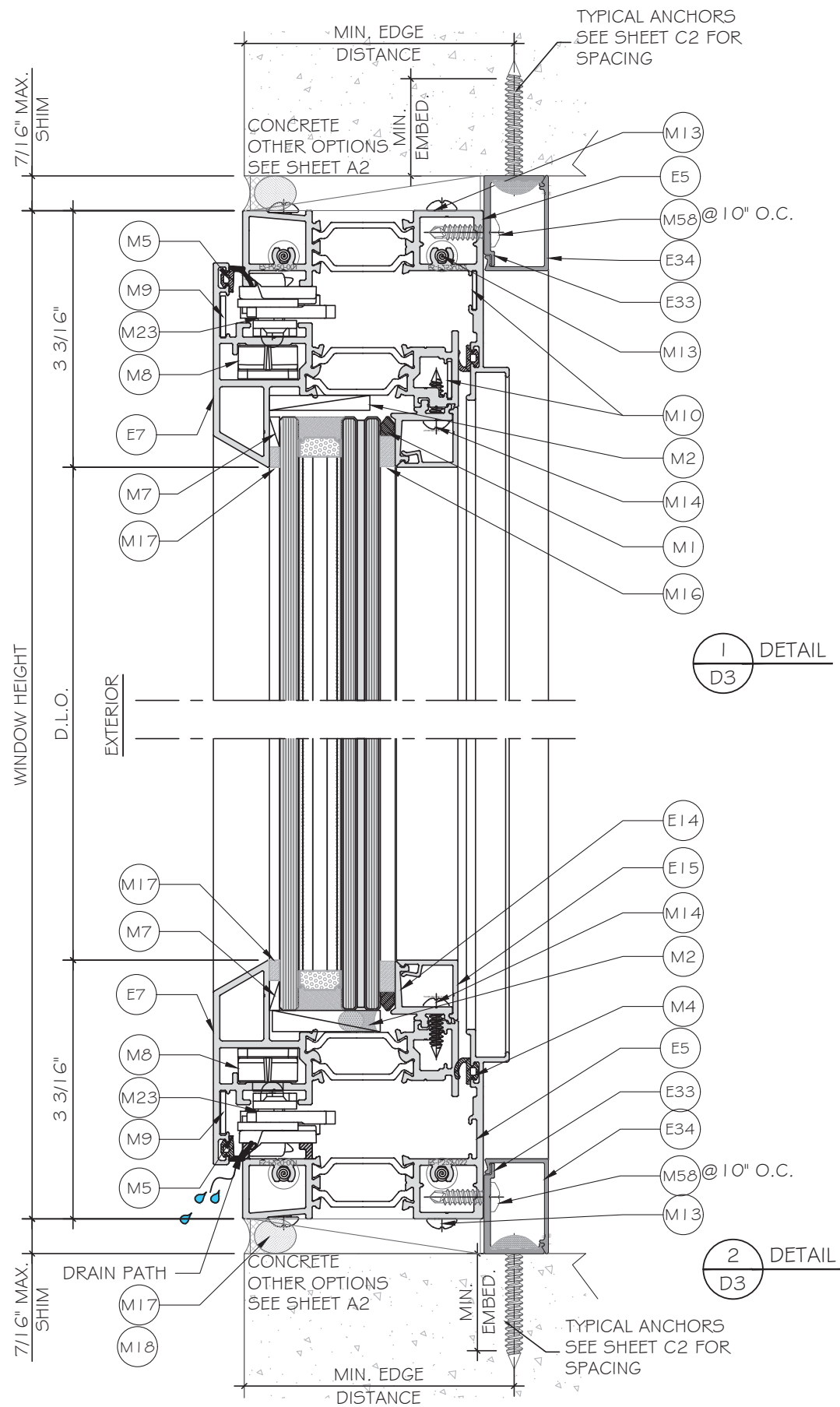
**MCY ENGINEERING, INC.**  
GLAZING CONSULTANTS  
12781 MIRAMAR PKWY, STE. 301  
MIRAMAR, FL 33027 P: 305.271.0117  
www.MCYEngineering.com mcy@mcyengineering.com

**ES-P300 CASEMENT WINDOW - L.M.I & S.M.I.**  
E.S. WINDOWS, INC.  
10653 NE QUAYBRIDGE CT.  
MIAMI, FL 33138  
TEL: (305) 624-7775

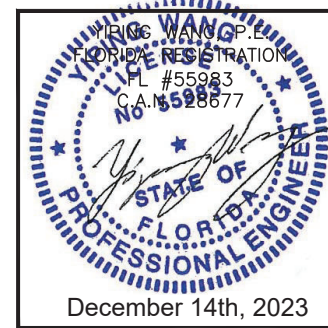
Rev. No.	Date	Drawn By	Description
R2	11.02.2023	JAMES	LUPDATE FEB 2023

Drawn Date: 11.02.2023  
Scale:  
DRAWING NO.: AD21-51  
Sheet No.: 11 OF 20





FLORIDA APPROVAL:  
FL40521.1



**MCY ENGINEERING, INC.**  
GLAZING CONSULTANTS  
12781 MIRAMAR PKWY, STE. 301  
MIRAMAR, FL 33027 P: 305.271.0117  
www.MCYEngineering.com mcy@mcyengineering.com

**ES-P300 CASEMENT WINDOW - L.M.I & S.M.I**  
E.S. WINDOWS, INC.  
10653 NE QUAYBRIDGE CT.  
MIAMI, FL 33138  
TEL. (305) 624-7775

Rev. No.	Date	Drawn By	Description
R2	11.02.2023	JAMES	UPDATE FEB 2023

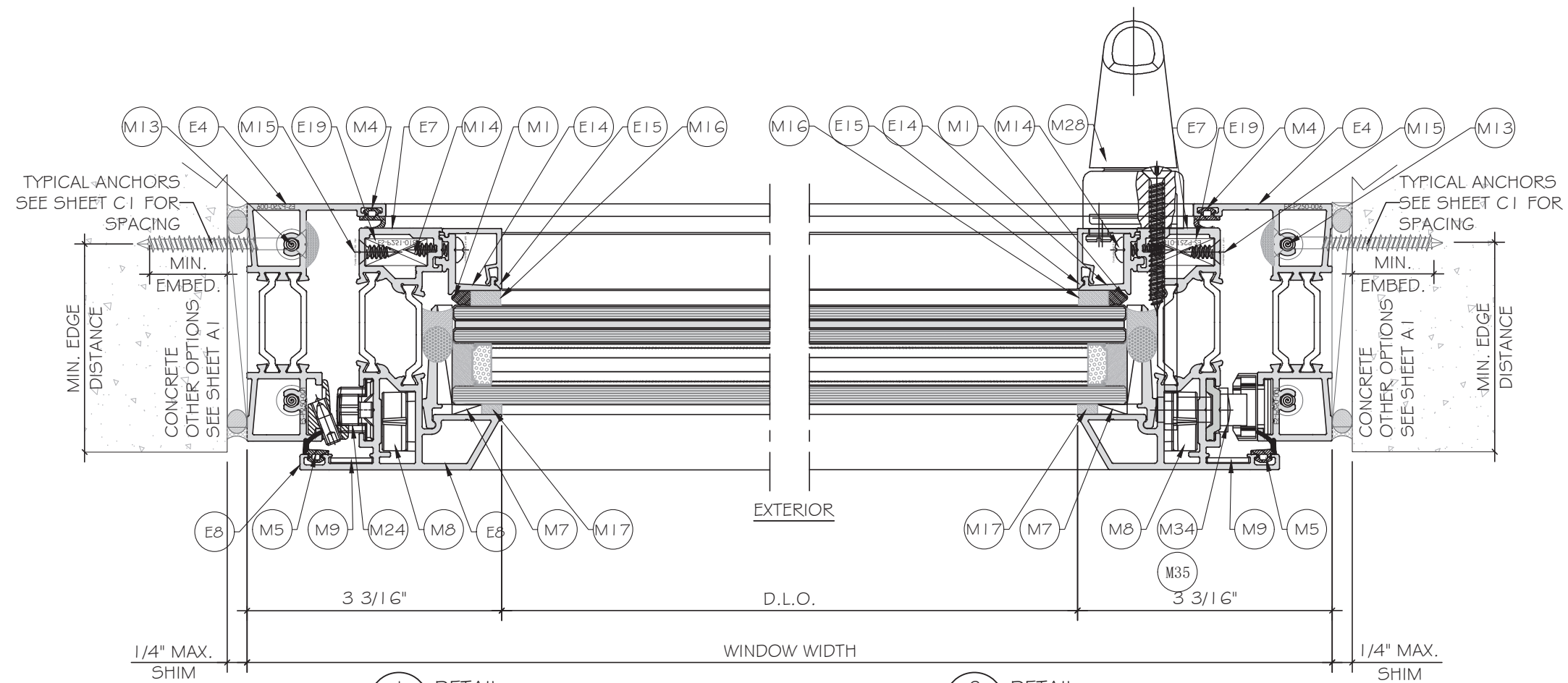
Drawn Date  
11.02.2023

Scale

DRAWING NO.  
AD21-51

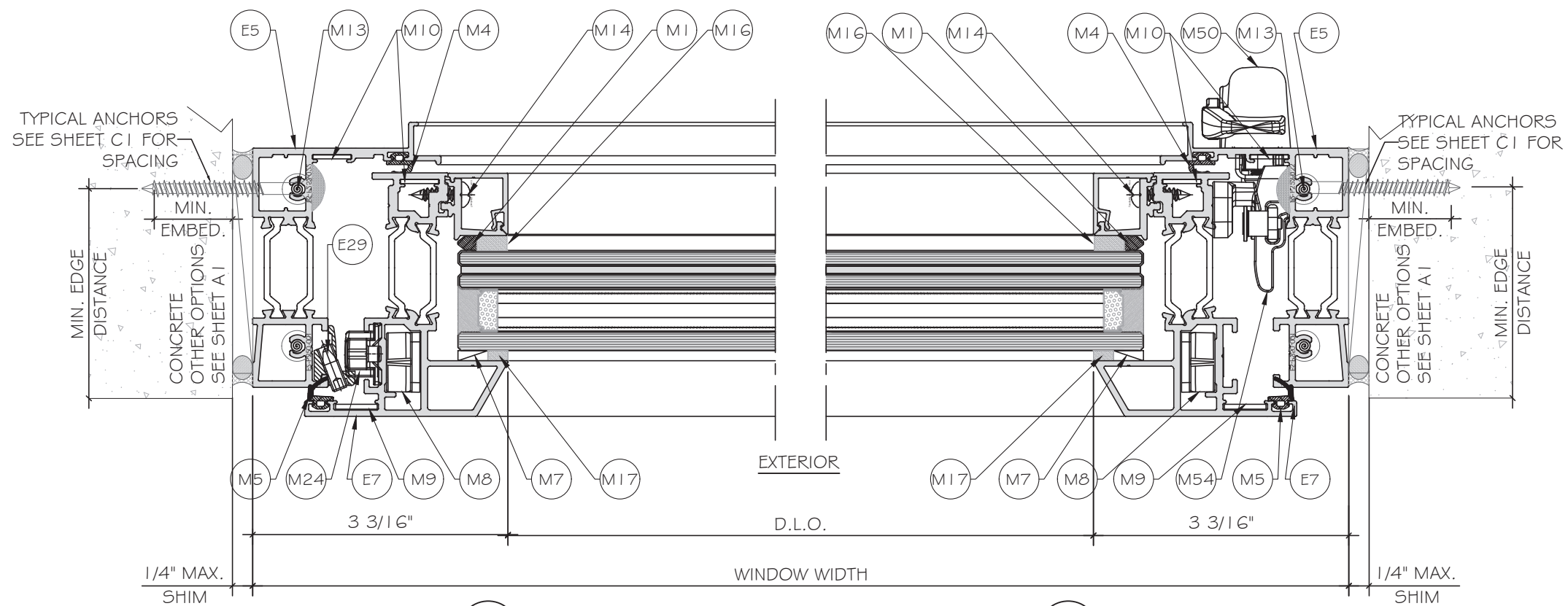
Sheet No.  
D3  
12 OF 20





1 DETAIL  
D4

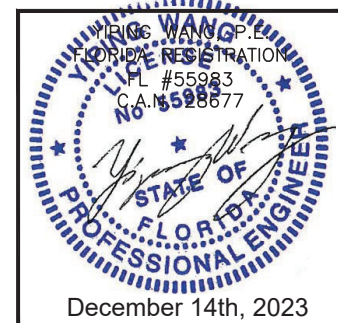
2 DETAIL  
D4



1 DETAIL  
D4 OPTION

2 DETAIL  
D4 OPTION

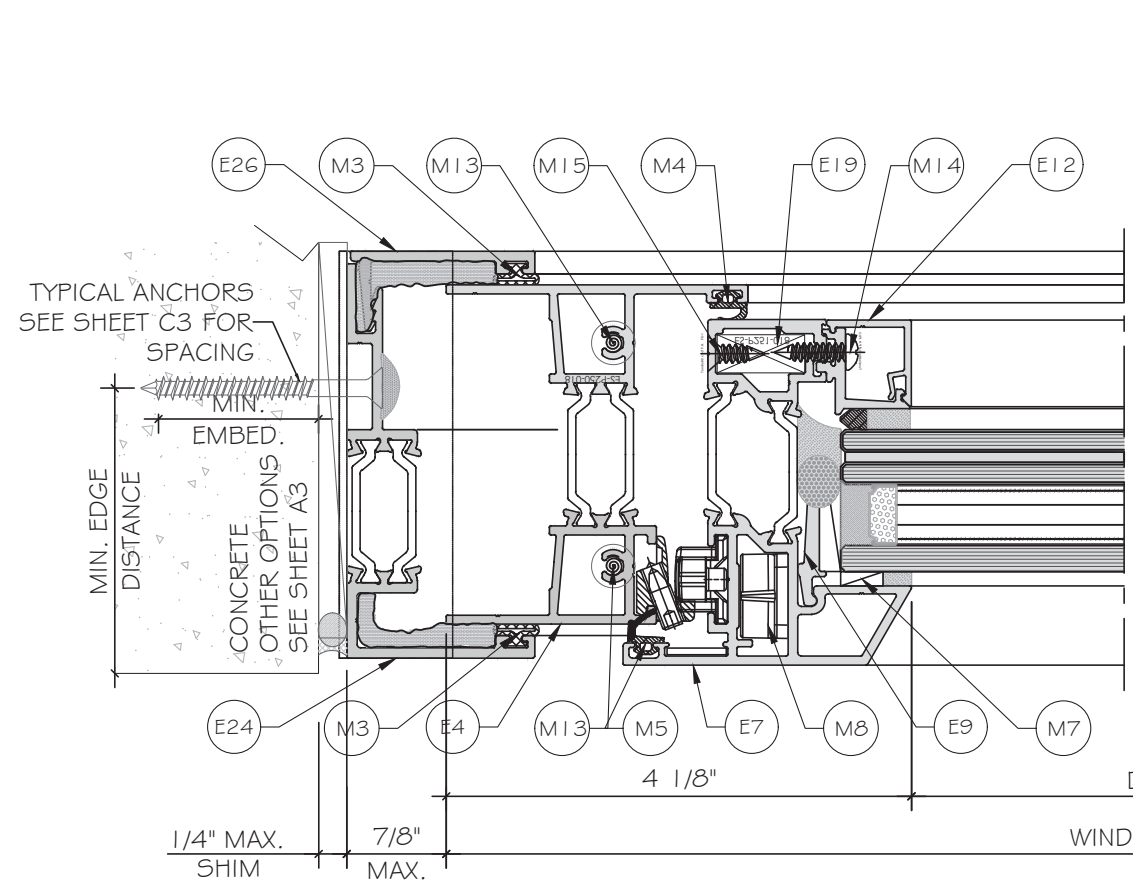
FLORIDA APPROVAL:  
FL40521.1



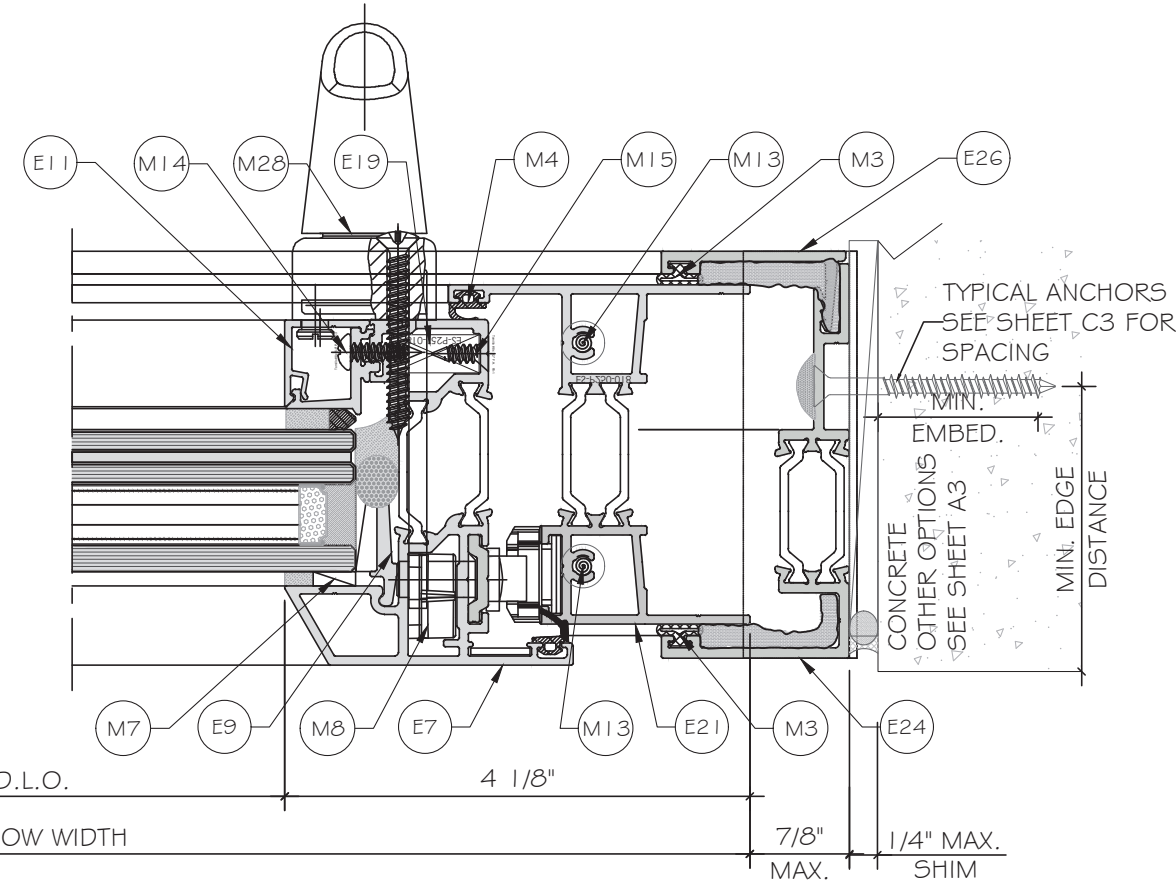
**MCY ENGINEERING, INC.**  
GLAZING CONSULTANTS  
12781 MIRAMAR PKWY, STE. 301  
MIRAMAR, FL 33027 P: 305.271.0117  
www.MCYEngineering.com mcy@mcyengineering.com

**ES-P300 CASEMENT WINDOW - L.M.I. & S.M.I.**  
E.S. WINDOWS, INC.  
10653 NE QUAYBRIDGE CT.  
MIAMI, FL 33138  
TEL. (305) 624-7775

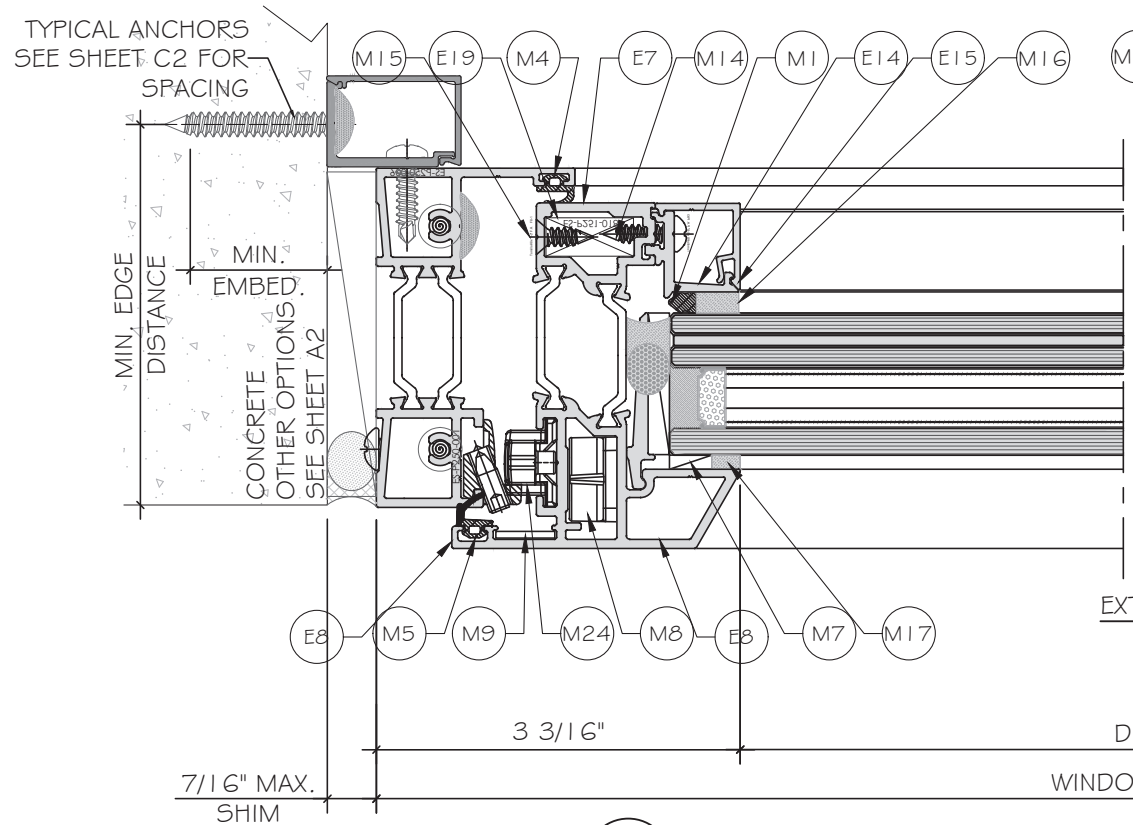
Rev. No.	Date	Drawn By	Description
R2	11.02.2023	JAMES	UPDATE FEB 2023
Drawn Date		Scale	
11.02.2023			
DRAWING NO.			
AD21-51			
Sheet No.			
13 OF 20			



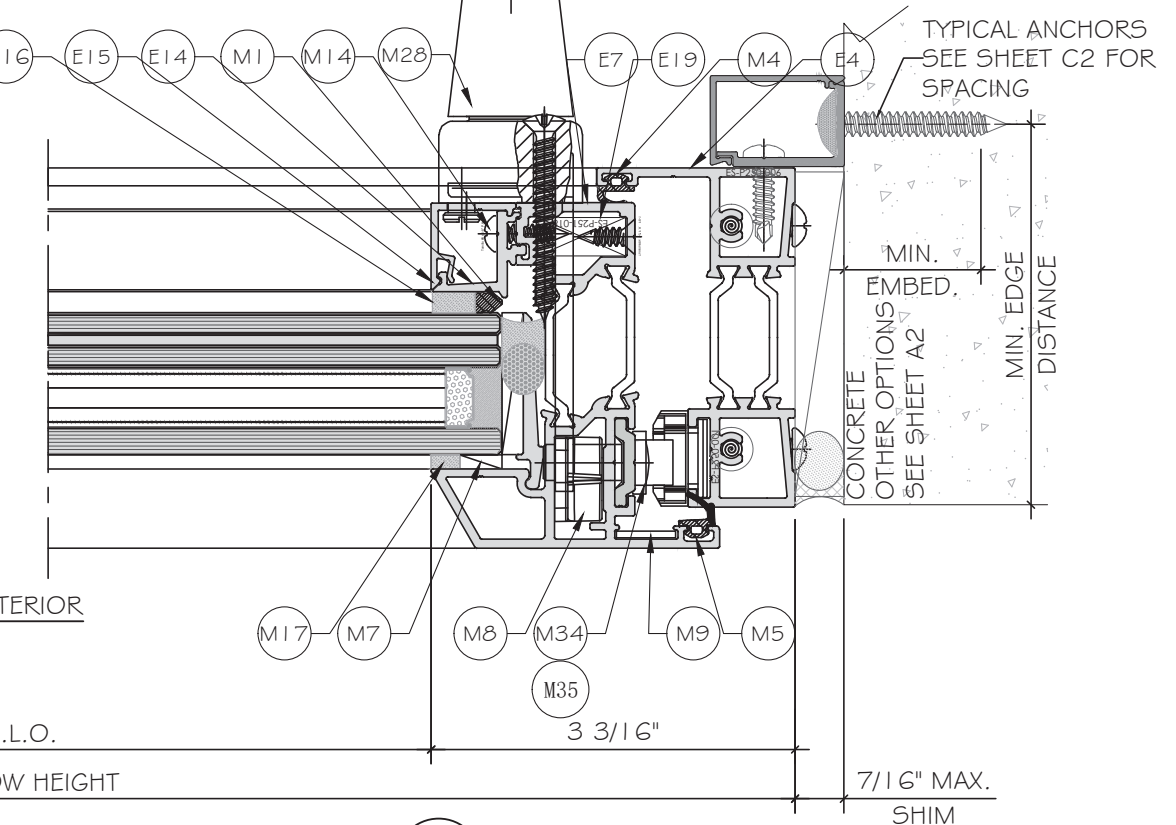
1 DETAIL  
D5



2 DETAIL  
D5

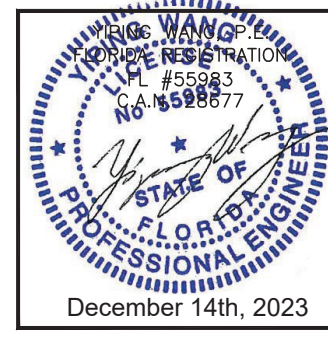


3 DETAIL  
D5



4 DETAIL  
D5

FLORIDA APPROVAL:  
FL40521.1



**MCY ENGINEERING, INC.**  
GLAZING CONSULTANTS  
12781 MIRAMAR PKWY, STE. 301  
MIRAMAR, FL 33027 P: 305.271.0117  
www.MCYEngineering.com mcy@mcyengineering.com

**ES-P300 CASEMENT WINDOW - L.M.I & S.M.I.**  
E.S. WINDOWS, INC.  
10653 NE QUAYBRIDGE CT.  
MIAMI, FL 33138  
TEL. (305) 624-7775

Rev. No.	Date	Drawn By	Description
R2	11.02.2023	JAMES	UPDATE FEB 2023
Drawn Date		Scale	
11.02.2023			
DRAWING NO.			
AD21-51			
D5			
Sheet No.			
14 OF 20			

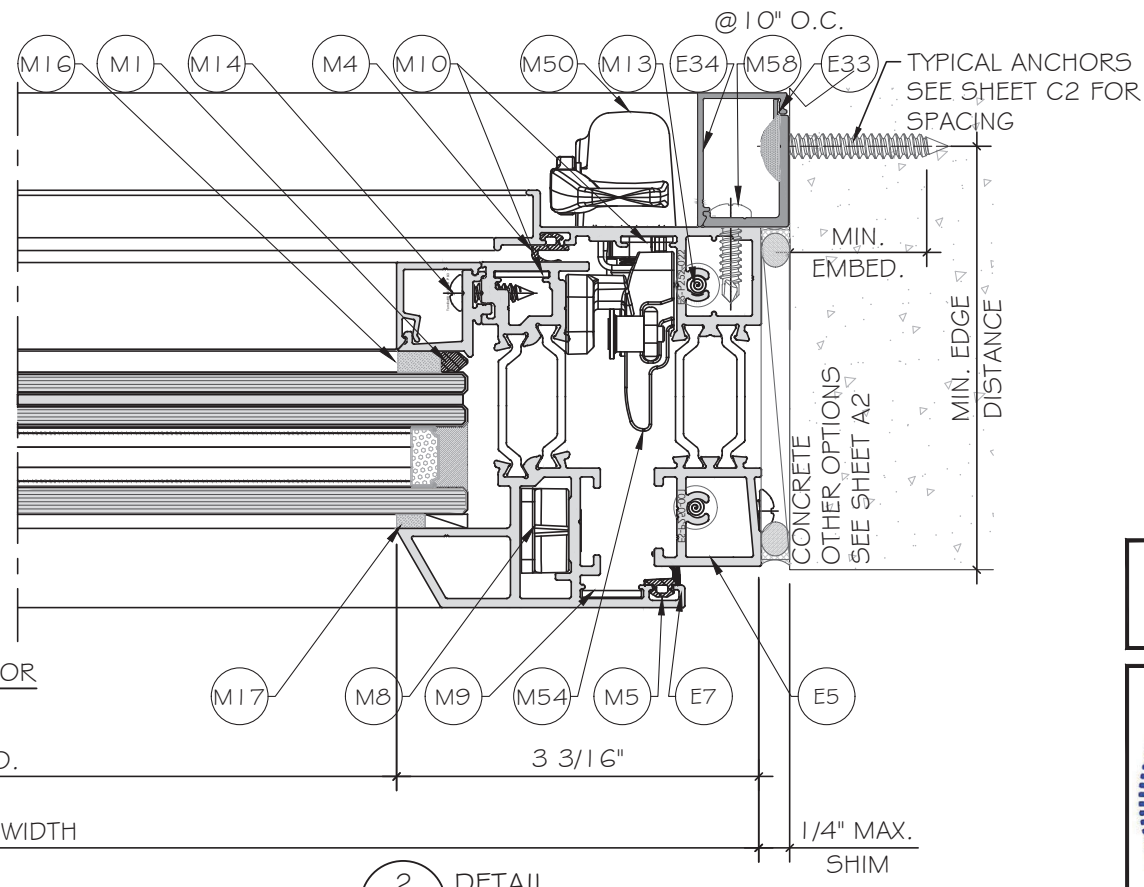
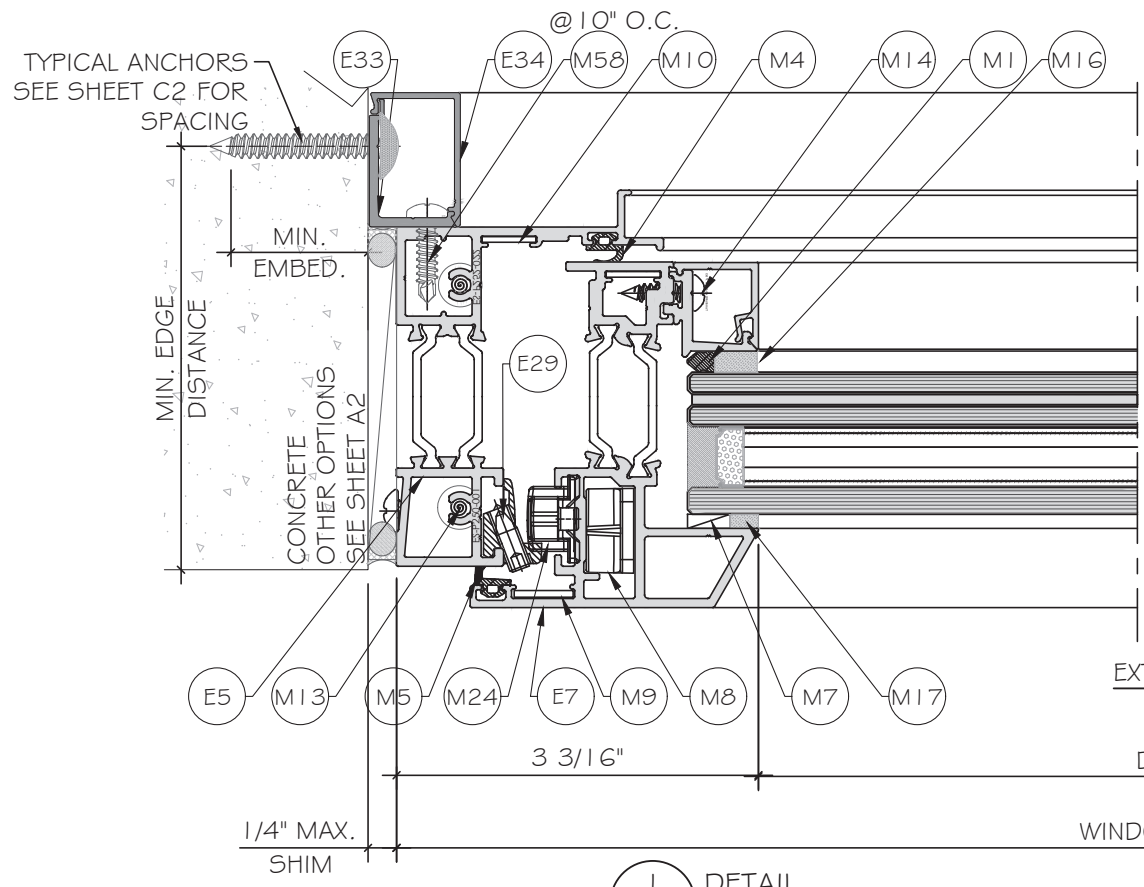
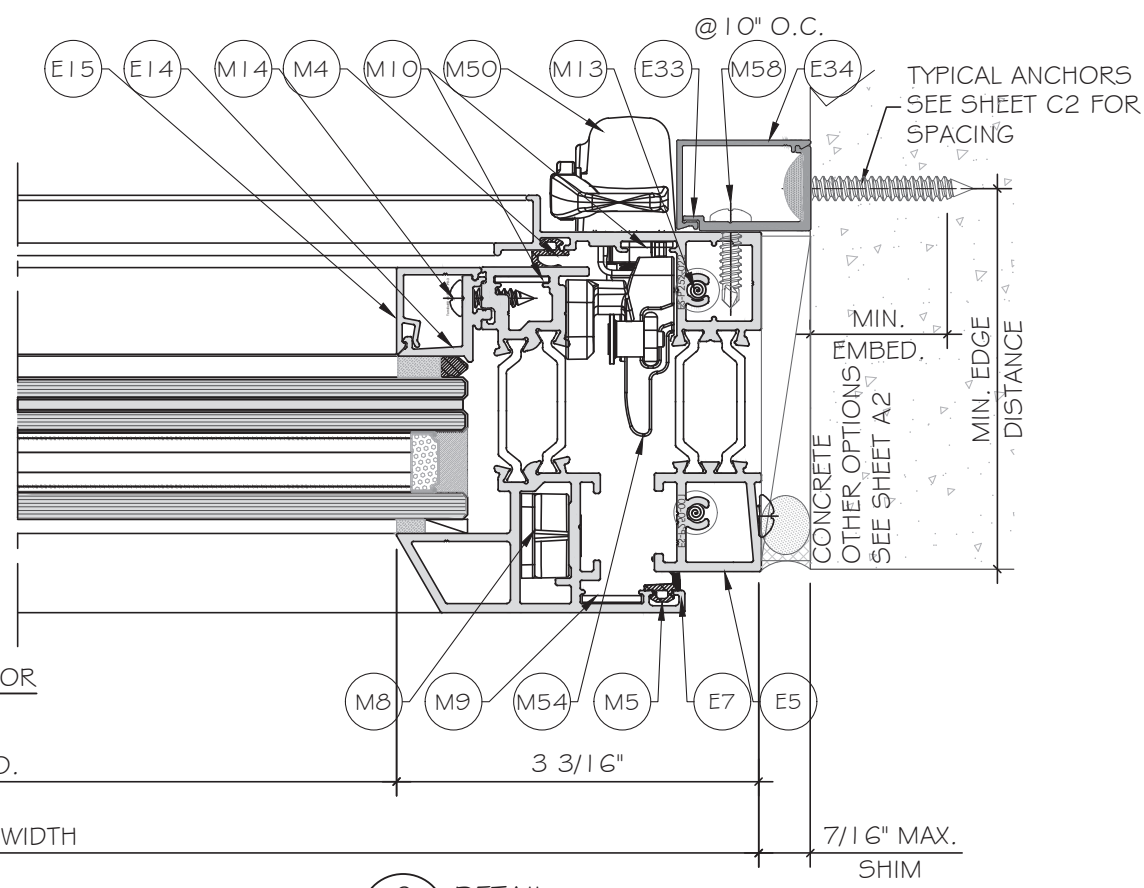
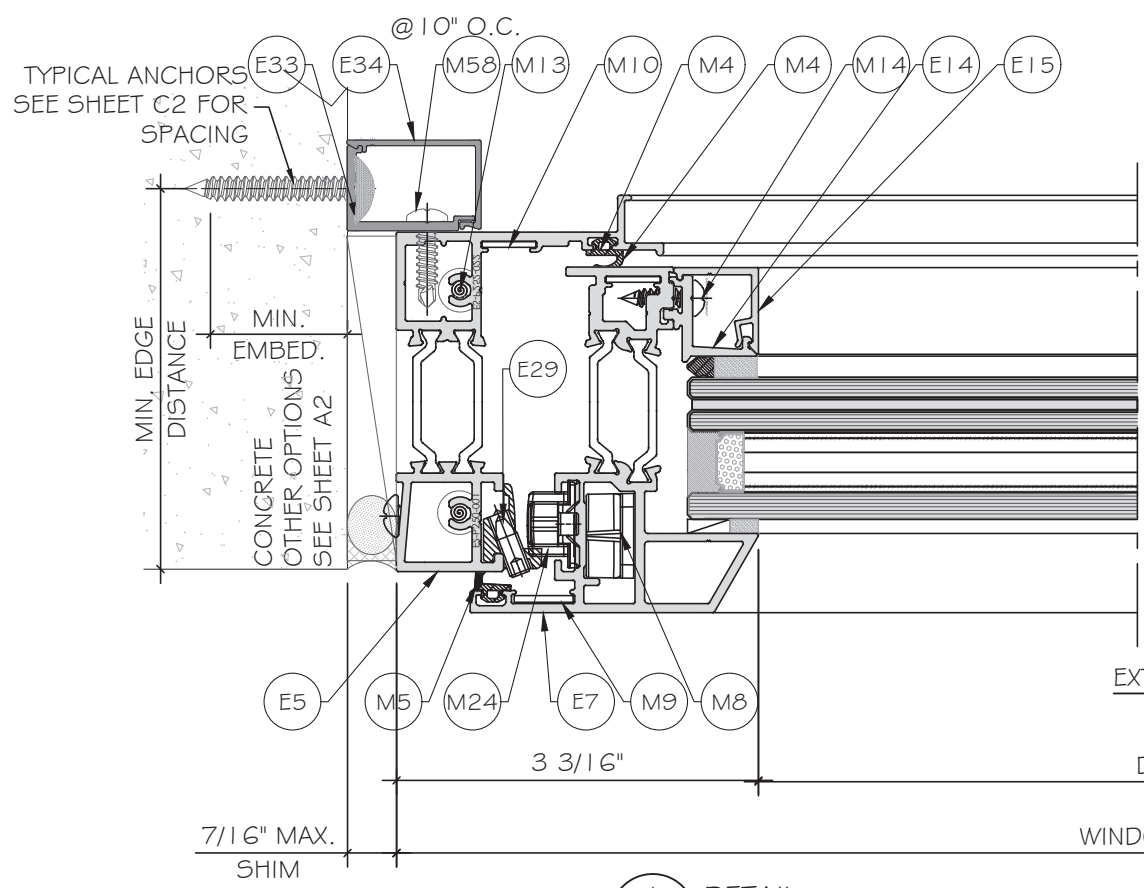
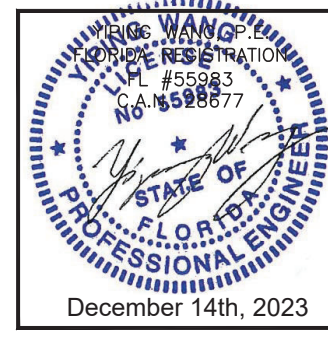


**ES-P300 CASEMENT WINDOW - L.M.I. & S.M.I.**  
E.S.WINDOWS, INC.  
10653 NE QUAYBRIDGE CT.  
MIAMI, FL 33138  
TEL. (305) 624-7775

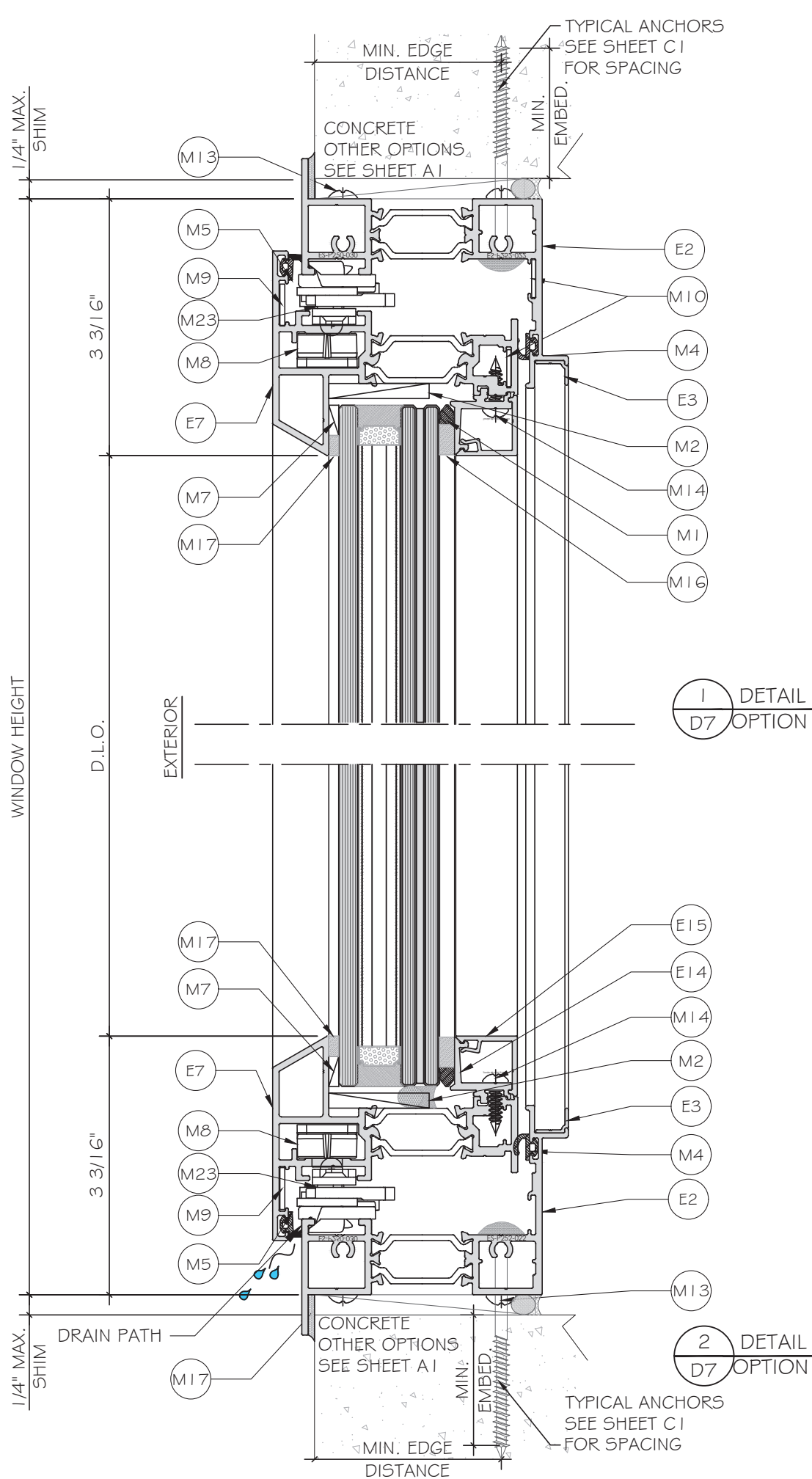
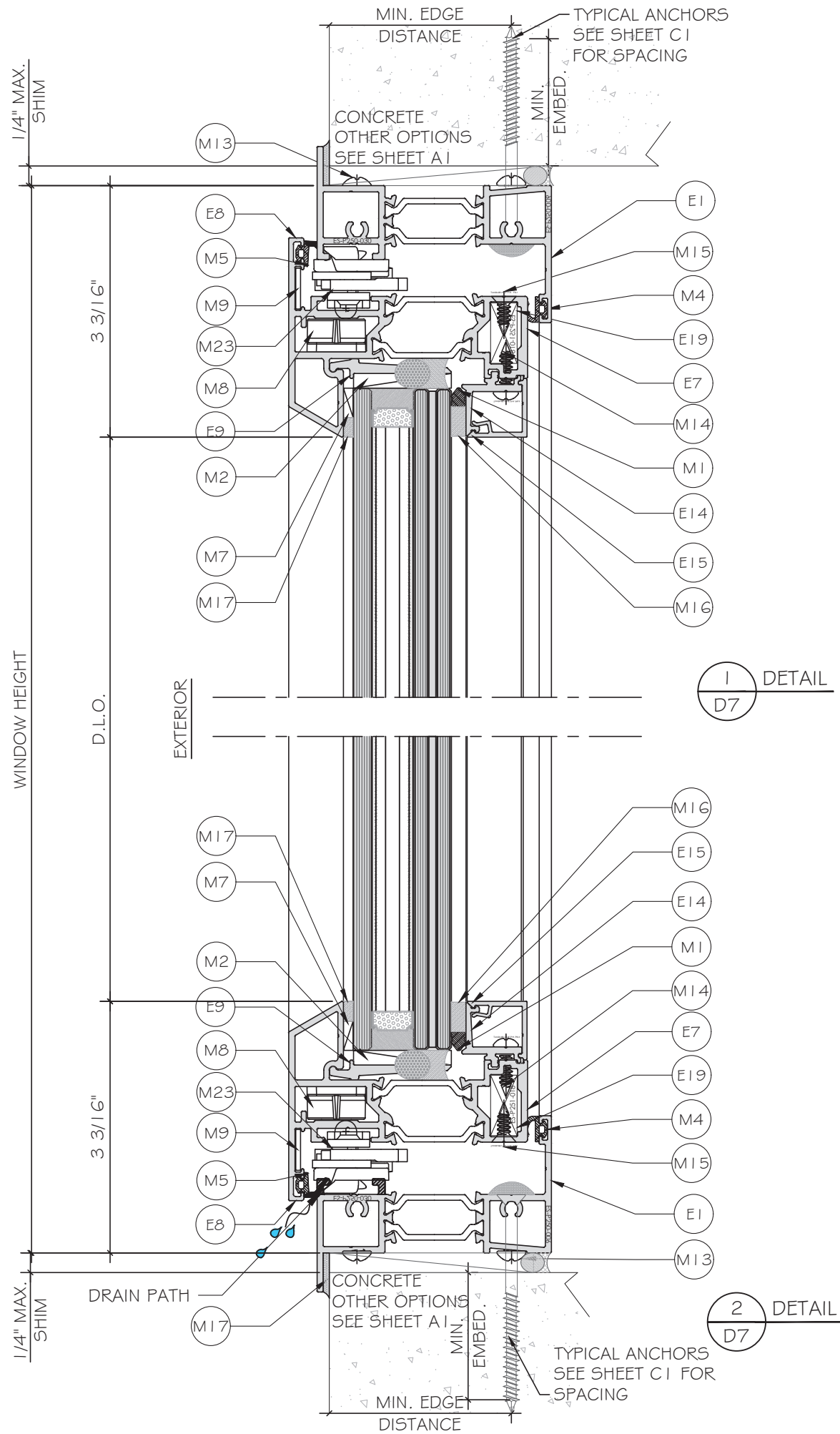
Rev. No.	Date	Drawn By	Description
R2	11.02.2023	JAMES	UPDATE FEB 2023

Drawn Date	Scale
11.02.2023	
DRAWING NO.	
AD21-51	
Sheet No.	
15 OF 20	

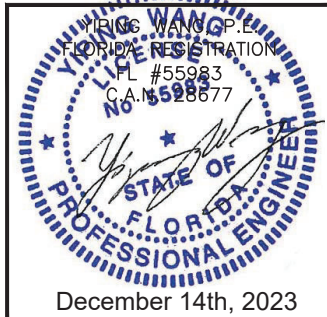
FLORIDA APPROVAL:  
**FL40521.1**







FLORIDA APPROVAL:  
FL40521.1



**MCY ENGINEERING, INC.**  
GLAZING CONSULTANTS  
12781 MIRAMAR PKWY, STE. 301  
MIRAMAR, FL 33027 P: 305.271.0117  
www.MCYEngineering.com mcy@mcyengineering.com

**ES-P300 CASEMENT WINDOW - L.M.I. & S.M.I.**  
E.S. WINDOWS, INC.  
10653 NE QUAYBRIDGE CT.  
MIAMI, FL 33138  
TEL: (305) 624-7775

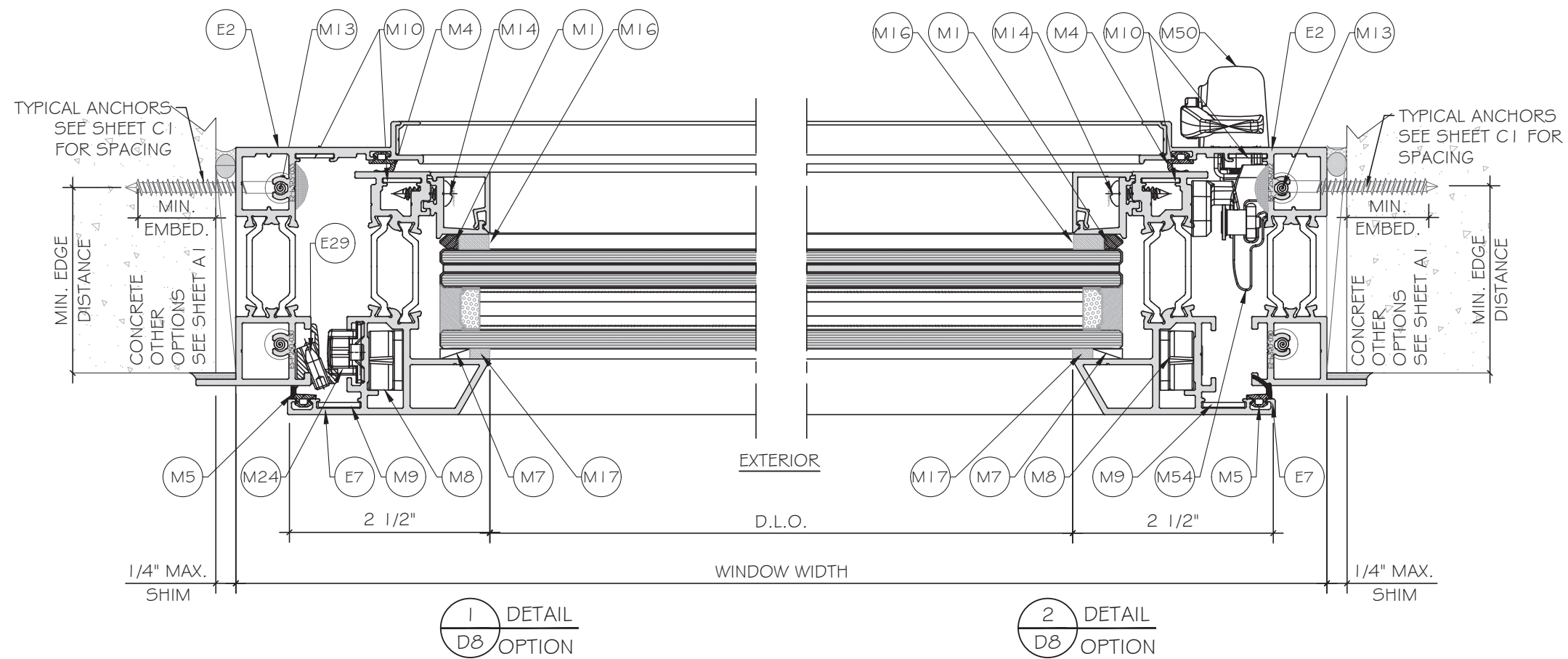
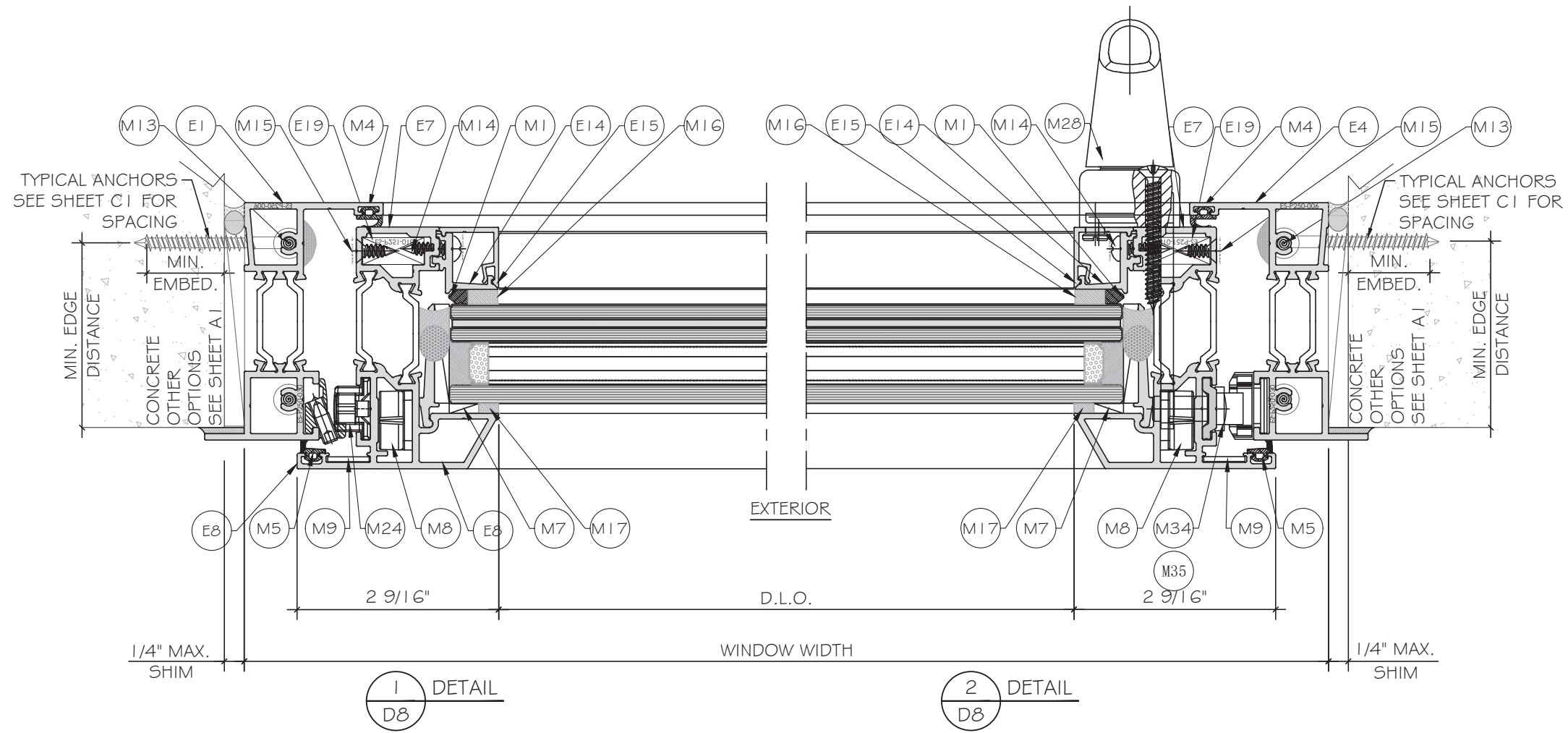
Rev. No.	Date	Drawn By	Description
R2	11.02.2023	JAMES	LUPDATE FEB 2023

Drawn Date 11.02.2023 Scale

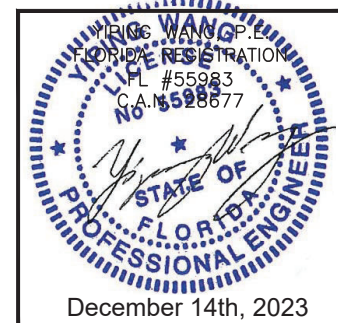
DRAWING NO. AD21-51

D7 Sheet No. 16 OF 20



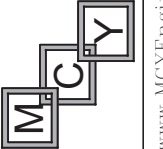


FLORIDA APPROVAL:  
FL40521.1



ES-P300 CASEMENT WINDOW - L.M.I & S.M.I

E.S. WINDOWS, INC.  
10653 NE QUAYBRIDGE CT.  
MIAMI, FL 33138  
TEL. (305) 624-7775

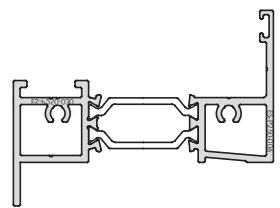


**MCY ENGINEERING, INC.**  
GLAZING CONSULTANTS  
12781 MIRAMAR PKWY, STE. 301  
MIRAMAR, FL 33027 P: 305.271.0117  
www.MCYEngineering.com mcy@mcyengineering.com

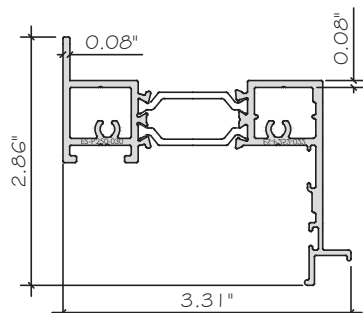
Rev. No.	Date	Drawn By	Description
R2	11.02.2023	JAMES	LUPDATE FEB 2023

Drawn Date: 11.02.2023  
Scale:  
DRAWING NO.: AD21-51

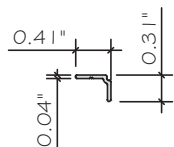
D8  
Sheet No.: 17 OF 20



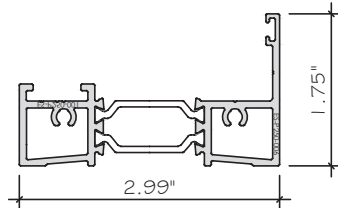
E1 FRAME FOR LEVER HANDLE WITH FLANGE  
ES-P300-531. ALUM. 6063-T6



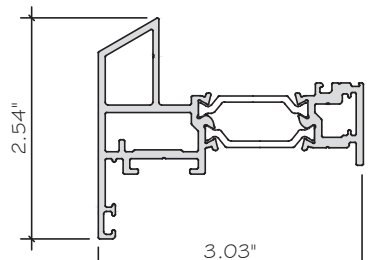
E2 FRAME FOR ROTO-OPERADOR WITH FLANGE  
ES-P300-532. ALUM. 6063-T6



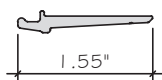
E3 SCREEN HOLDER  
ES-5020. ALUM. 6063-T5



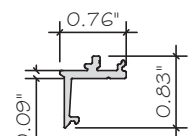
E4 FRAME FOR VENT  
ES-P300-504  
ALUM. 6063-T6



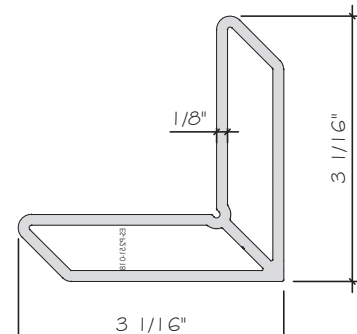
E8 SASH (SCREEN)  
ES-P300-508  
ALUM. 6063-T6



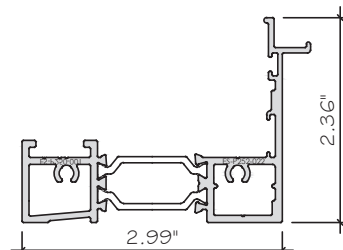
E9 SETTING CHAIR  
ES-P300-002  
ALUM. 6063-T6



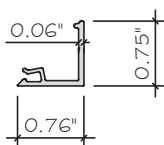
E14 IMPACT GLASS STOP @SASH  
ES-P300-015  
ALUM. 6063-T6



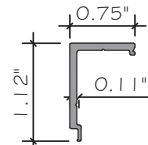
E19 CORNER JOINT  
ES-P251-018  
ALUM. 6063-T6



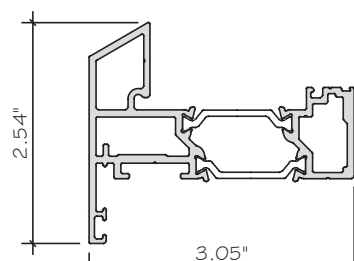
E5 FRAME FOR VENT  
ES-P300-505  
ALUM. 6063-T6



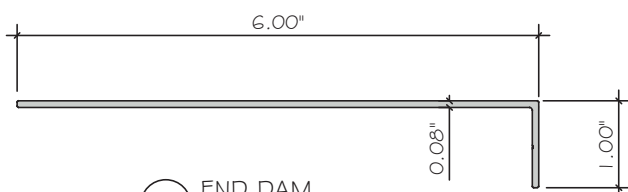
E15 IMPACT GLASS STOP COVER @SASH  
ES-P300-016  
ALUM. 6063-T5



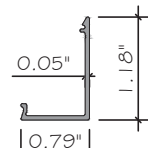
E33 STRAP ANCHOR  
ES-P300-006  
ALUM. 6063-T5



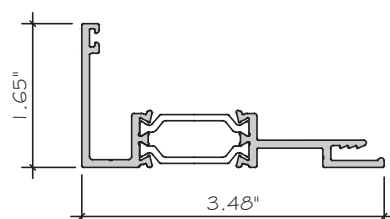
E7 SASH  
ES-P300-507  
ALUM. 6063-T6



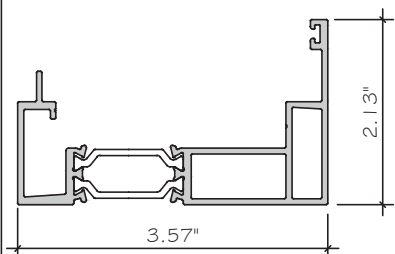
E31 END DAM  
ES-CF-001  
ALUM. 6063-T5



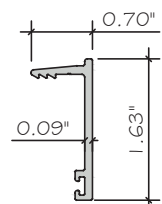
E34 STRAP ANCHOR COVER  
ES-P300-007



E24 RECEPTOR HEAD/JAMB  
ES-P300-523  
ALUM. 6063-T6

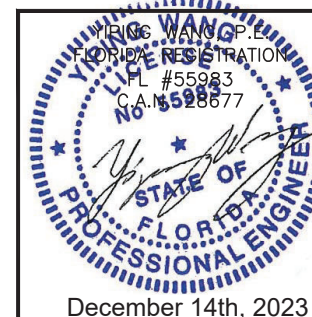


E25 RECEPTOR SILL  
ES-P300-524  
ALUM. 6063-T6



E26 RECEPTOR STOP  
ES-P300-021  
ALUM. 6063-T6

FLORIDA APPROVAL:  
FL40521.1



**MCY ENGINEERING, INC.**  
GLAZING CONSULTANTS  
12781 MIRAMAR PKWY, STE. 301  
MIRAMAR, FL 33027 P: 305.271.0117  
www.MCYEngineering.com mcy@mcyengineering.com

**ES-P300 CASEMENT WINDOW - L.M.I & S.M.I**  
E.S. WINDOWS, INC.  
10653 NE QUAYBRIDGE CT.  
MIAMI, FL 33138  
TEL: (305) 624-7775

Rev. No.	Date	Drawn By	Description
R2	11.02.2023	JAMES	UPDATE FEB 2023
Drawn Date	11.02.2023		
Scale			
DRAWING NO. AD21-51			
PARTS			
Sheet No. 18 OF 20			

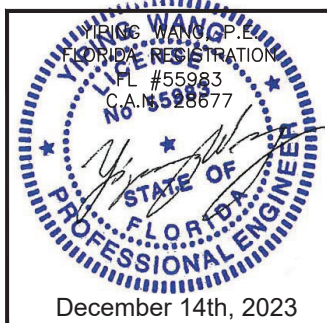
## MATERIAL LISTE

CODE	PART	DESCRIPTION	MATERIAL
E1	ES-P300-531	FRAME FOR LEVER HANDLE WITH FLANGE	ALUMINIUM 6063-T6
E2	ES-P300-532	FRAME FOR ROTO-OPERADOR WITH FLANGE	ALUMINIUM 6063-T6
E3	ES-5020	SCREEN HOLDER	ALUMINIUM 6063-T5
E4	ES-P300-504	FRAME FOR VENT	ALUMINIUM 6063-T6
E5	ES-P300-505	FRAME FOR VENT (SCREEN)	ALUMINIUM 6063-T6
E7	ES-P300-507	SASH	ALUMINIUM 6063-T6
E8	ES-P300-508	SASH (SCREEN)	ALUMINIUM 6063-T6
E9	ES-P300-002	SETTING CHAIR	ALUMINIUM 6063-T6
E14	ES-P300-015	IMPACT GLASS STOP @SASH	ALUMINIUM 6063-T6
E15	ES-P300-016	IMPACT GLASS STOP COVER @SASH	ALUMINIUM 6063-T5
E19	ES-P251-018	CORNER JOINT	ALUMINIUM 6063-T6
E24	ES-P300-523	RECEPTOR HEAD/JAMB	ALUMINIUM 6063-T6
E25	ES-P300-524	RECEPTOR SILL	ALUMINIUM 6063-T6
E26	ES-P300-021	RECEPTOR STOP	ALUMINIUM 6063-T6
E31	ES-CF-001	END DAM	ALUMINIUM 6063-T5
E33	ES-P300-006	STRAP ANCHOR	ALUMINIUM 6063-T5
E34	ES-P300-007	STRAP ANCHOR COVER	ALUMINIUM 6063-T5

**MCY ENGINEERING, INC.**  
GLAZING CONSULTANTS  
12781 MIRAMAR PKWY, STE. 301  
MIRAMAR, FL 33027 P: 305.271.0117  
www.MCYEngineering.com mcy@mcyengineering.com

**ES-P300 CASEMENT WINDOW - L.M.I & S.M.I**  
**E.S.WINDOWS, INC.**  
10653 NE QUAYBRIDGE CT.  
MIAMI, FL 33138  
TEL: (305) 624-7775

FLORIDA APPROVAL:  
**FL40521.1**



Drawn Date	Scale
11.02.2023	
DRAWING NO.	
<b>AD21-51</b>	
<b>BOM</b>	
Sheet No.	
<b>19 OF 20</b>	

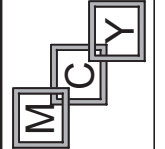
MATERIAL LIST

CODE	PART	DESCRIPTION	MATERIAL
M1	ES-SD451-G04	WEDGE GASKET @ GLASS PERIMETER	SILICONE 60±3 SHORE A
M2	ES-4520-B02A	SETTING BLOCK@ 1/4 POINTS	SILICONE 80±3 SHORE A
M3	ES-5008A	BUBBLE GASKET @ GLAZING BEAD & RECEPTOR	SILICONE 65±5 SHORE A
M4	ES-PI312T-G03A	INTERNAL FLIPPER GASKET @ FRAME PERIMETER	SILICONE
M5	ES-EL300-G01	EXTERNAL FLIPPER GASKET @ FRAME PERIMETER	EPDM CO-EXTRUDED 65±5 SHORE A
M7	1/8" x 1/2" TAPE	DOUBLE FACE TAPE	POLYURETHENE
M8	CORNER JOINT O423	CORNER JOINT	DIE CAST ALUMINUM
M9	HC-200-M01	CORNER LOCK FOR SASH	ALUMINUM
M10	PJS-43-SS	CORNER KEY PJS-43-SS	STAINLESS STEEL
M11	WPSA-N1	RETICULATED FOAM 30PPI 3/4" x 3/4" x 2"	OPEN CELL FOAM
M12	1222-XXX	WEEP HOLE COVER	NYLON 6
M13	#10 x 1/4" PH	ASSEMBLY SCREW	STAINLESS STEEL
M14	#8 x 5/8" PH	SCREW FOR GLASS STOP	STAINLESS STEEL
M15	#8 x 1/2" FH	SCREW FOR CORNER KEY ES-P251-018	STAINLESS STEEL
M16	DOWSIL 983	STRUCTURAL SILICONE	SILICONE
M17	DOWSIL 791	SEALANT SILICONE	SILICONE
M18	BACKER ROD 1/2"	BACKER ROD OPEN CELL @ GLASS PERIMETER	POLYURETHENE
M20	SHIM 1529-XX	ALUMINUM	STAINLESS STEEL
M21	#10x1/2" P.H.	SCREW FOR HINGE	STAINLESS STEEL
M23	1204R/L CONCEALED HINGE	FOR CASEMENT	STAINLESS STEEL
M24	SNUBBER	SNBB KIT MV LM 4200-D VS/BS TS B1 857052	STAINLESS STEEL
M26	LIIT DEVICE 876-XX	FOR CASEMENT	STAINLESS STEEL
M27	#10x1/2" F.H. PIN IN - HEX	SECURITY SCREW FOR LIMIT DEVICE	STAINLESS STEEL
M28	HANDLE SI LINE LM DA	LEVER HANDLE	DIE CAST ALUMINUM
M29	FLANGE SLEEVE 899915	FLANGE SLEEVE	STAINLESS STEEL
M30	SCREW M5X6-A2 701.9002.5015.A0	SCREW FOR LEVER HANDLE	STAINLESS STEEL
M31	HANDLE PIN MFKL0020-000010	HANDLE PIN	STAINLESS STEEL
M32	HANDLE FORK 72 mm	FOR HANDLE	DIE CAST ALUMINUM
M33	#8x1/2" F.H.	SCREW FOR LEVER HANDLE	STAINLESS STEEL
M34	LOCK PLATE 1315-S4	FOR LOCKING SYSTEM	DIE CAST ALUMINUM
M35	EURO GROOVE KEEPER 1303-260	FOR LOCKING SYSTEM	DIE CAST ALUMINUM

MATERIAL LIST

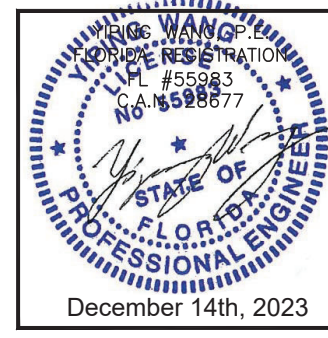
CODE	PART	DESCRIPTION	MATERIAL
M37	C011-0169-085 or C011-170-085 HEAVY OPERATOR	14.5" HD OPERATOR	STAINLESS STEEL
M39	C011-2203 OPERATOR SPACER 3.5MM	FOR CASEMENT	ABS
M40	C011-0606-XXX RH OPERATOR HANDLE	FOR AWNING & CASEMENT	ABS
M41	C011-0605-XXX LH OPERATOR HANDLE	FOR CASEMENT	ABS
M42	C011-0171-085 OR C011-0172-085 14.5" OPERATOR TRACK	FOR CASEMENT	STAINLESS STEEL
M44	C001-4000 OPERATOR CLAMP WASHER	FOR OPERATOR (x2)	STAINLESS STEEL
M45	#8-32 x 1/2" FH	OPERATOR CLAMP WASHER (x1)	STAINLESS STEEL
M46	#8 x 1/2" FH	SCREW FOR BRACKET & TRACK	STAINLESS STEEL
M47	#8 x 3/4" PH	SCREW FOR OPERATOR	STAINLESS STEEL
M48	CLO1-0475	LOCKING HANDLE	DIE CAST ZINC ALLOY
M50	CLO2-2045-XXX	SNAP ON COVER	COPOLYMER / DIE CAST ZINC ALLOY
M51	CLO2-1020-XXX CLO2-1021-XXX	SNAP ON HANDLE	DIE CAST ALUMINUM
M52	C001-4001 LOCKINGPOINT CLAMP WASHER	FOR LOCKING HANDLE (x2)	STAINLESS STEEL
M53	CLO2-2059-00B	STRIKER	ABS
M54	CLO2-2060-00B	LOCKING BAR GUIDE	ABS
M55	#8 x 3/4" PH	STRIKER (x2) LOCKING BAR GUIDE (x2) OPERATOR (x6)	STAINLESS STEEL
M56	#8-32 x 1/2" PH	MULTIPOINT CLAMP WASHER (x1)	STAINLESS STEEL
M58	#12 x 1/2" PH	FOR STRAP ANCHOR	STAINLESS STEEL

**MCY ENGINEERING, INC.**  
GLAZING CONSULTANTS  
12781 MIRAMAR PKWY, STE. 301  
MIRAMAR, FL 33027 P: 305.271.0117  
www.MCYEngineering.com mcy@mcyengineering.com



**ES-P300 CASEMENT WINDOW - L.M.I. & S.M.I.**  
**E.S.WINDOWS, INC.**  
10653 NE QUAYBRIDGE CT.  
MIAMI, FL 33138  
TEL: (305) 624-7775

FLORIDA APPROVAL:  
**FL40521.1**



Drawn Date	11.02.2023	Scale	
Drawn By	JAMES	Drawing No.	AD21-51
Date	11.02.2023	Rev. No.	R2
Description			
Sheet No.		20 OF 20	