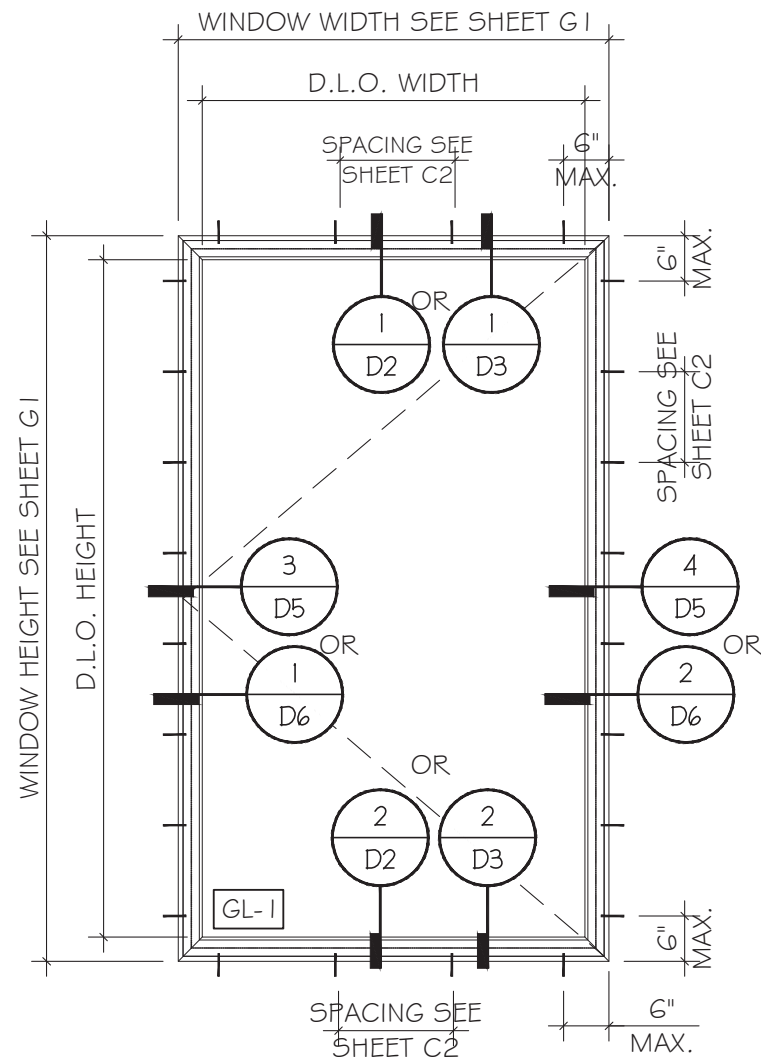


**DIRECT ANCHOR**

**TYPICAL WINDOW ELEVATIONS**

D.L.O. HEIGHT = WINDOW HEIGHT - 6 3/8"

D.L.O. WIDTH = WINDOW WIDTH - 6 3/8"

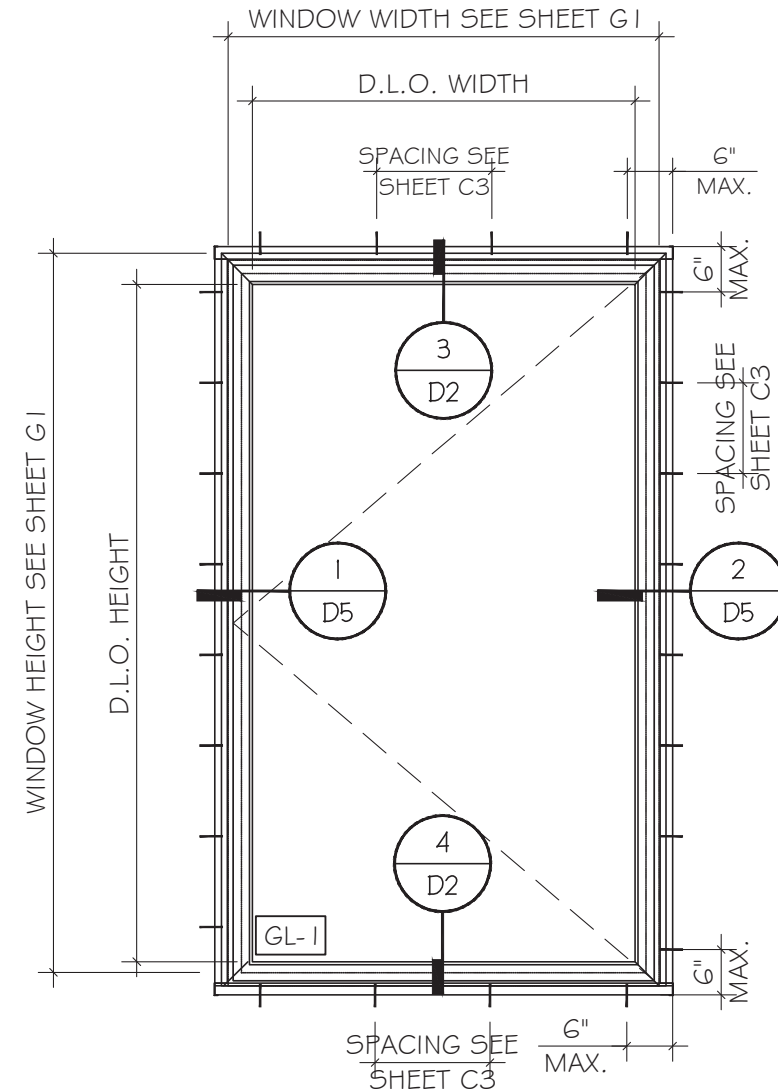


**ANCHOR WITH STRAP**

**TYPICAL WINDOW ELEVATIONS**

D.L.O. HEIGHT = WINDOW HEIGHT - 6 3/8"

D.L.O. WIDTH = WINDOW WIDTH - 6 3/8"



**ANCHOR WITH RECEPTOR**

**TYPICAL WINDOW ELEVATIONS**

D.L.O. HEIGHT = WINDOW HEIGHT - 7 5/16"

D.L.O. WIDTH = WINDOW WIDTH - 8 1/4"

FLORIDA APPROVAL:  
**FL#40521.2**

YOUNG WANG  
Professional Engineer  
FL #55983  
C.A. No. 6528677  
November 03rd, 2023

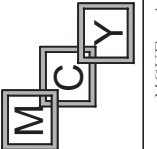
**ES-P300 CASEMENT WINDOW - NON IMPACT**

**E.S. WINDOWS, INC.**

10653 NE QUAYBRIDGE CT.

MIAMI, FL 33138

TEL. (305) 624-7775



**MCY ENGINEERING, INC.**

GLAZING CONSULTANTS

12781 MIRAMAR PKWY, STE. 301

MIRAMAR, FL 33027

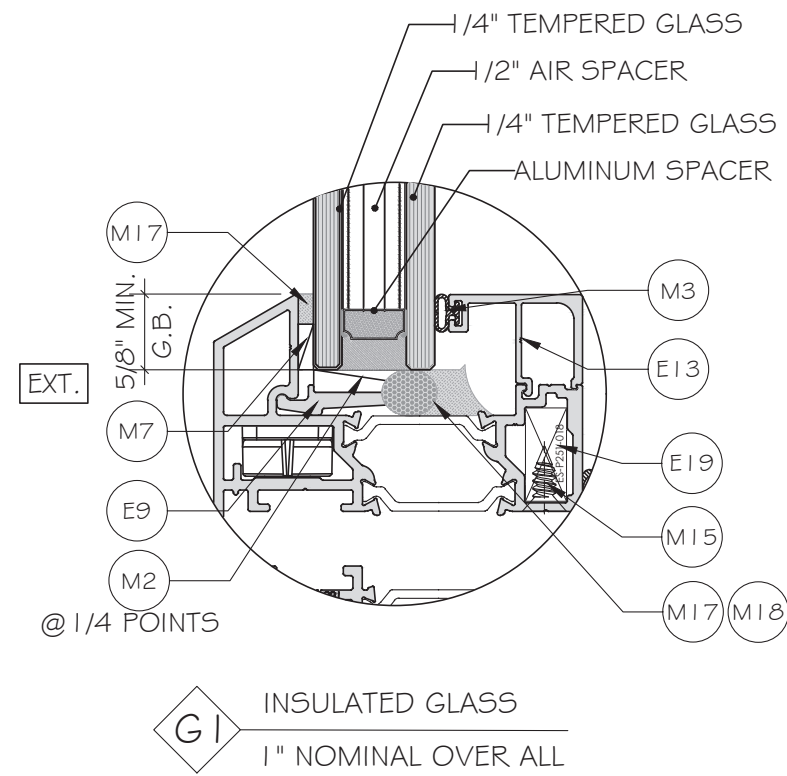
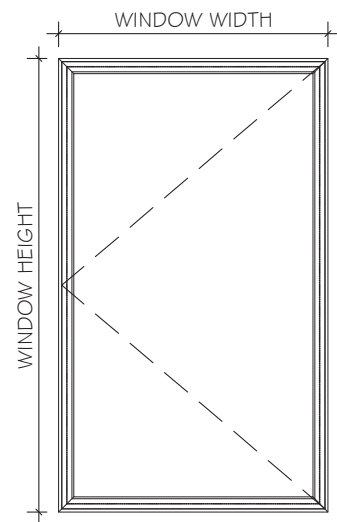
P: 305.271.0117

www.MCYEngineering.com mcy@mcyengineering.com

Rev. No.	Date	Drawn By	Description
R2	09.21.2023	JAMES	UPDATE TO FBC 2023

Drawn Date	Scale
09.21.2023	
DRAWING NO.	
AD21-52	
E1	
Sheet No.	
2 OF 20	

CASEMENT WINDOW ALLOWABLE PRESSURE			
WINDOW HEIGHT	WINDOW WIDTH	ALLOWABLE LOAD	
INCH	INCH	PSF EXT (+)	PSF INT (-)
72.0	36.0	100.0	100.0
	42.0		
	48.0	95.0	100.0
	54.0	84.0	95.0
	60.0	76.0	86.0
78.0	36.0	100.0	100.0
	42.0		
	48.0	95.0	100.0
	54.0	84.0	95.0
	60.0	76.0	86.0
84.0	36.0	100.0	100.0
	42.0		
	48.0	94.0	100.0
	54.0	84.0	95.0
	60.0	76.0	86.0
90.0	36.0	100.0	100.0
	42.0		
	48.0	91.0	100.0
	54.0	84.0	95.0
	60.0	76.0	86.0
96.0	36.0	100.0	100.0
	42.0	98.0	100.0
	48.0	89.0	100.0
	54.0	83.0	93.0
	57.0	80.0	90.0



NOTE:  
GLASS COMPLIES WITH ASTM E1300-16  
(3 SEC. GUSTS).

FLORIDA APPROVAL:  
FL#40521.2

YONG WANG, P.E.  
FLORIDA REGISTRATION  
FL #55983  
C.A. No. 6528677  
November 03rd, 2023

**MCY ENGINEERING, INC.**  
GLAZING CONSULTANTS  
12781 MIRAMAR PKWY, STE. 301  
MIRAMAR, FL 33027 P: 305.271.0117  
www.MCYEngineering.com mcy@mcyengineering.com

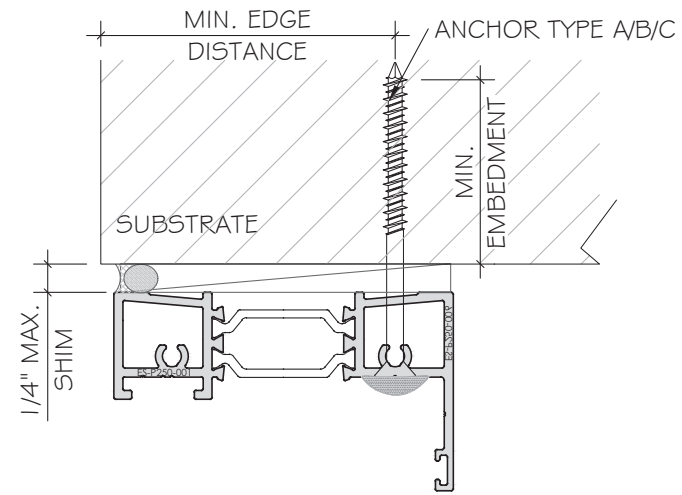
**ES-P300 CASEMENT WINDOW - NON IMPACT**  
E.S.WINDOWS, INC.  
10653 NE QUAYBRIDGE CT.  
MIAMI, FL 33138  
TEL. (305) 624-7775

Rev. No.	Date	Drawn By	Description
R2	09.21.2023	JAMES	UPDATE TO FBC 2023
Drawn Date		Scale	
09.21.2023			
DRAWING NO.			
AD21-52			
G1			
Sheet No.			
3 OF 20			

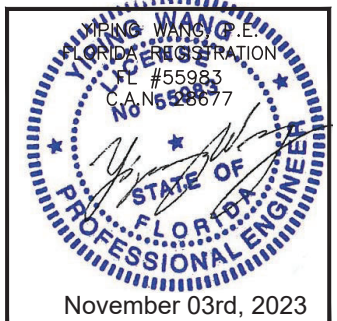
ANCHOR CHART FOR ANCHOR TYPE "A" "B" "C"

WINDOW HEIGHT INCH	WINDOW WIDTH INCH	ALLOWABLE LOAD (EXT+)PSF	ALLOWABLE LOAD (INT-)PSF	ANCHOR SPACING (INCH)		
				TYPE A INTO WOOD	TYPE B INTO CONCRETE	TYPE C INTO METAL
72.0	36.0	80.0	90.0	12	12	12
	42.0	80.0	90.0	11	11	11
	48.0	80.0	90.0	9	9	9
	54.0	80.0	90.0	9	9	9
	60.0	76.0	86.0	9	9	9
78.0	36.0	80.0	90.0	12	12	12
	42.0	80.0	90.0	11	11	11
	48.0	80.0	90.0	9	9	9
	54.0	80.0	90.0	9	9	9
	60.0	76.0	86.0	9	9	9
84.0	36.0	80.0	90.0	12	12	12
	42.0	80.0	90.0	11	11	11
	48.0	80.0	90.0	9	9	9
	54.0	80.0	90.0	9	9	9
	60.0	76.0	86.0	9	9	9
90.0	36.0	80.0	90.0	12	12	12
	42.0	80.0	90.0	11	11	11
	48.0	80.0	90.0	9	9	9
	54.0	80.0	90.0	9	9	9
	60.0	76.0	86.0	9	9	9
96.0	36.0	80.0	90.0	12	12	12
	42.0	80.0	90.0	11	11	11
	48.0	80.0	90.0	9	9	9
	54.0	80.0	90.0	9	9	9
	57.0	80.0	90.0	9	9	9

SEE SHEET A1 FOR ANCHOR TYPES

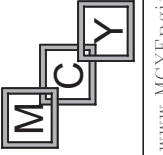


FLORIDA APPROVAL:  
FL#40521.2



ES-P300 CASEMENT WINDOW - NON IMPACT

E.S.WINDOWS, INC.  
10653 NE QUAYBRIDGE CT.  
MIAMI, FL 33138  
TEL. (305) 624-7775



MCY ENGINEERING, INC.  
GLAZING CONSULTANTS

12781 MIRAMAR PKWY, STE. 301  
MIRAMAR, FL 33027 P: 305.271.0117  
www.MCYEngineering.com mcy@mcyengineering.com

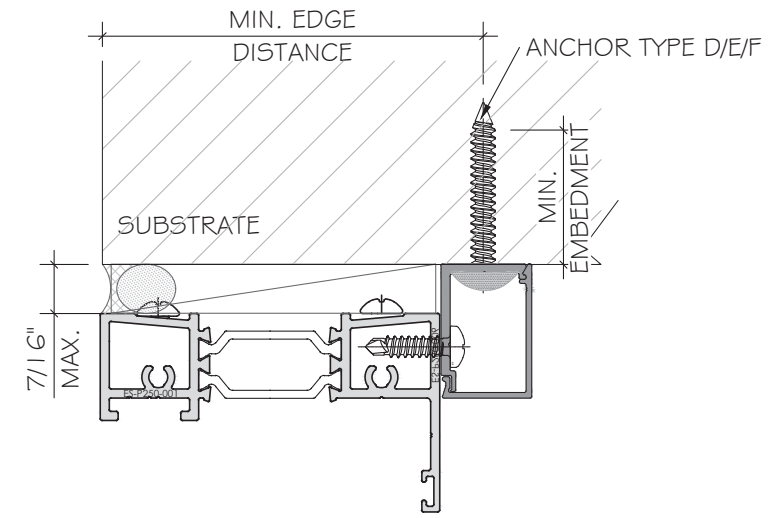
Rev. No.	Date	Drawn By	Description
R2	09.21.2023	JAMES	UPDATE TO FBC 2023

Drawn Date	Scale
09.21.2023	
DRAWING NO.	
AD21-52	
C1	
Sheet No.	
4 OF 20	

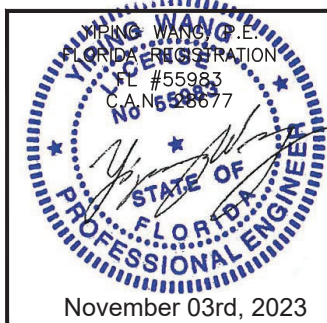
ANCHOR CHART FOR ANCHOR TYPE "D" "E" "F"

WINDOW HEIGHT INCH	WINDOW WIDTH INCH	ALLOWABLE LOAD (EXT+)PSF	ALLOWABLE LOAD (INT-)PSF	ANCHOR SPACING (INCH)		
				TYPE D INTO WOOD	TYPE E INTO CONCRETE	TYPE F INTO METAL
72.0	36.0	80.0	90.0	10	15	16
	42.0	80.0	90.0	9	13	15
	48.0	80.0	90.0	8	11	13
	54.0	80.0	90.0	7	11	12
	60.0	76.0	86.0	7	11	12
78.0	36.0	80.0	90.0	10	15	16
	42.0	80.0	90.0	9	13	15
	48.0	80.0	90.0	8	11	13
	54.0	80.0	90.0	7	11	12
	60.0	76.0	86.0	7	11	12
84.0	36.0	80.0	90.0	10	15	16
	42.0	80.0	90.0	10	13	15
	48.0	80.0	90.0	8	11	13
	54.0	80.0	90.0	8	11	12
	60.0	76.0	86.0	8	11	12
90.0	36.0	80.0	90.0	10	15	16
	42.0	80.0	90.0	9	13	15
	48.0	80.0	90.0	8	11	13
	54.0	80.0	90.0	7	11	12
	60.0	76.0	86.0	8	11	13
96.0	36.0	80.0	90.0	10	15	16
	42.0	80.0	90.0	9	13	15
	48.0	80.0	90.0	8	11	13
	54.0	80.0	90.0	7	11	13
	57.0	80.0	90.0	7	11	12

SEE SHEET A2 FOR ANCHOR TYPES



FLORIDA APPROVAL:  
FL#40521.2



ES-P300 CASEMENT WINDOW - NON IMPACT  
E.S.WINDOWS, INC.  
10653 NE QUAYBRIDGE CT.  
MIAMI, FL 33138  
TEL. (305) 624-7775

Rev. No.	Date	Drawn By	Description
R2	09.21.2023	JAMES	UPDATE TO FBC 2023

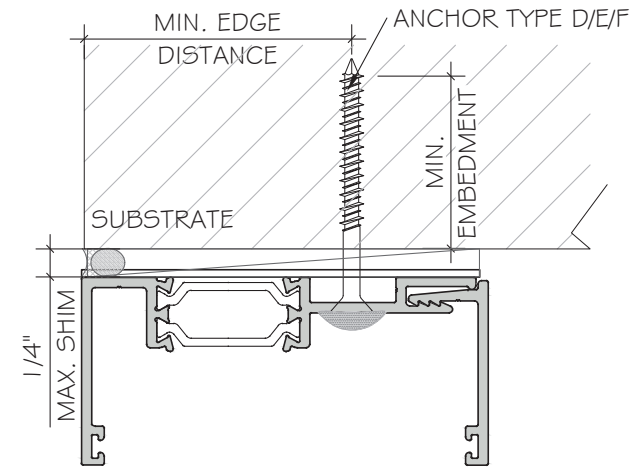
Drawn Date: 09.21.2023  
Scale:  
DRAWING NO.: AD21-52  
C2  
Sheet No.: 5 OF 20

**MCY ENGINEERING, INC.**  
GLAZING CONSULTANTS  
12781 MIRAMAR PKWY, STE. 301  
MIRAMAR, FL 33027 P: 305.271.0117  
www.MCYEngineering.com mcy@mcyengineering.com

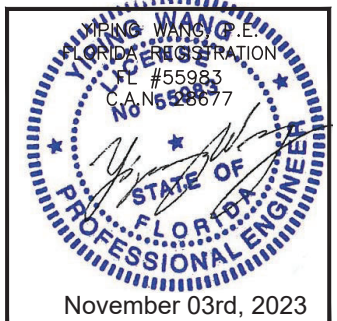
ANCHOR CHART FOR ANCHOR TYPE "D" "E" "F"

WINDOW HEIGHT INCH	WINDOW WIDTH INCH	ALLOWABLE LOAD (EXT+)PSF	ALLOWABLE LOAD (INT-)PSF	ANCHOR SPACING (INCH)		
				TYPE D INTO WOOD	TYPE E INTO CONCRETE	TYPE F INTO METAL
72.0	36.0	80.0	90.0	11	16	16
	42.0	80.0	90.0	9	15	16
	48.0	80.0	90.0	9	13	16
	54.0	80.0	90.0	9	14	16
	60.0	76.0	86.0	9	14	16
78.0	36.0	80.0	90.0	11	16	16
	42.0	80.0	90.0	10	15	16
	48.0	80.0	90.0	9	14	16
	54.0	80.0	90.0	9	14	16
	60.0	76.0	86.0	9	14	16
84.0	36.0	80.0	90.0	11	16	16
	42.0	80.0	90.0	10	15	16
	48.0	80.0	90.0	9	14	16
	54.0	80.0	90.0	9	14	16
	60.0	76.0	86.0	9	14	16
90.0	36.0	80.0	90.0	11	16	16
	42.0	80.0	90.0	10	15	16
	48.0	80.0	90.0	9	14	16
	54.0	80.0	90.0	9	14	16
	60.0	76.0	86.0	9	14	16
96.0	36.0	80.0	90.0	11	16	16
	42.0	80.0	90.0	10	15	16
	48.0	80.0	90.0	10	14	16
	54.0	80.0	90.0	9	14	16
	57.0	80.0	90.0	9	14	16

SEE SHEET A3 FOR ANCHOR TYPES

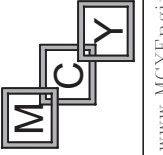


FLORIDA APPROVAL:  
FL#40521.2



ES-P300 CASEMENT WINDOW - NON IMPACT

E.S. WINDOWS, INC.  
10653 NE QUAYBRIDGE CT.  
MIAMI, FL 33138  
TEL. (305) 624-7775



MCY ENGINEERING, INC.  
GLAZING CONSULTANTS

12781 MIRAMAR PKWY, STE. 301  
MIRAMAR, FL 33027 P: 305.271.0117  
www.MCYEngineering.com mcy@mcyengineering.com

Rev. No.	Date	Drawn By	Description
R2	09.21.2023	JAMES	UPDATE TO FBC 2023

Drawn Date	Scale
09.21.2023	
DRAWING NO.	
AD21-52	
C3	
Sheet No.	
6 OF 20	

TYPICAL ANCHOR TYPES:

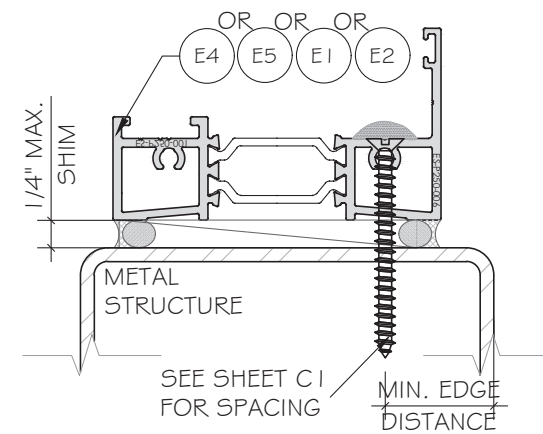
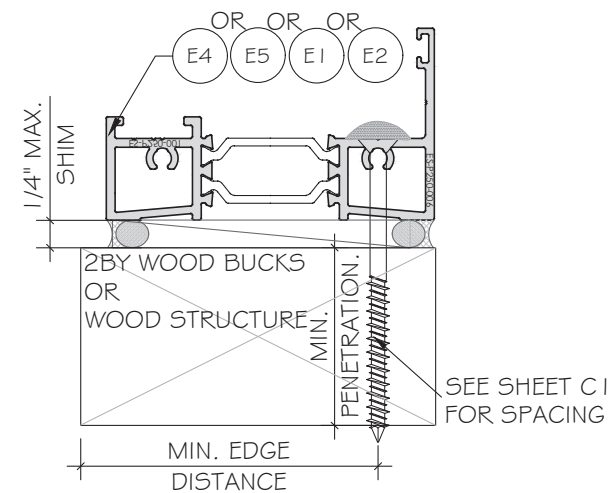
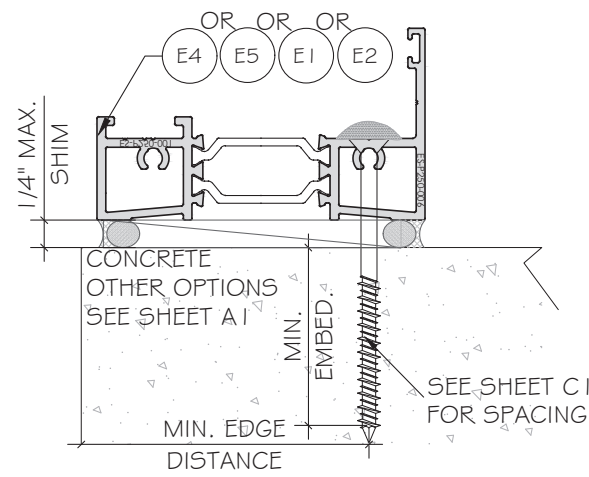
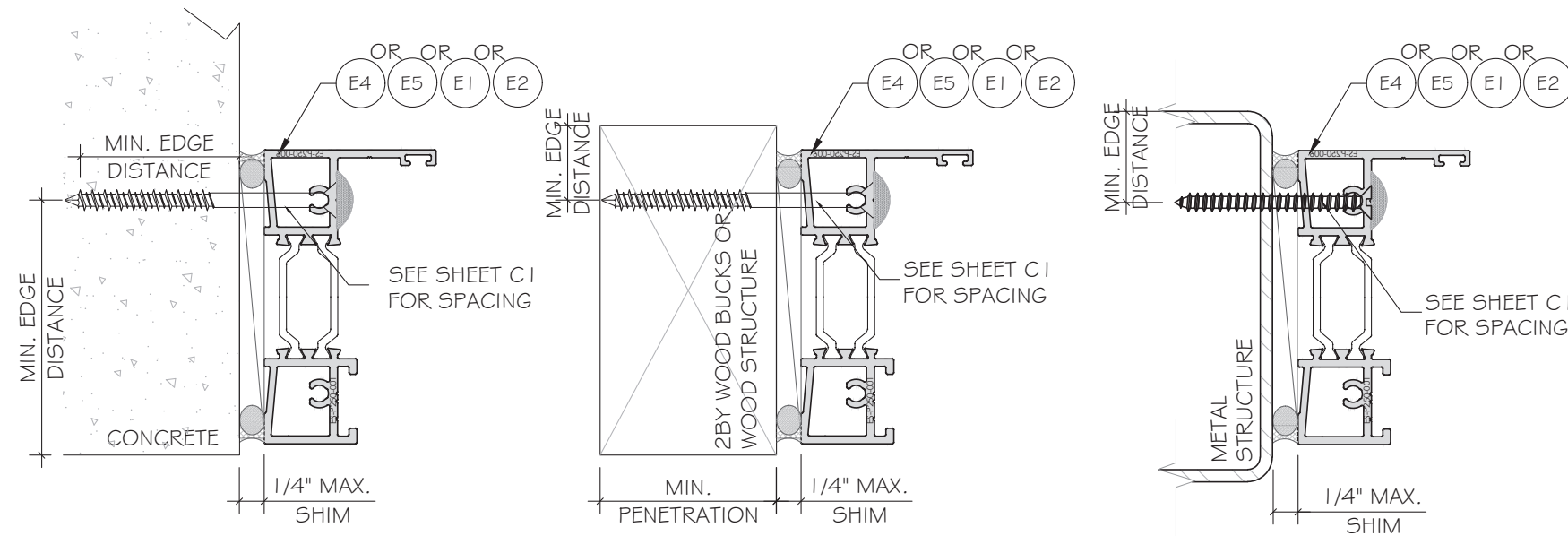
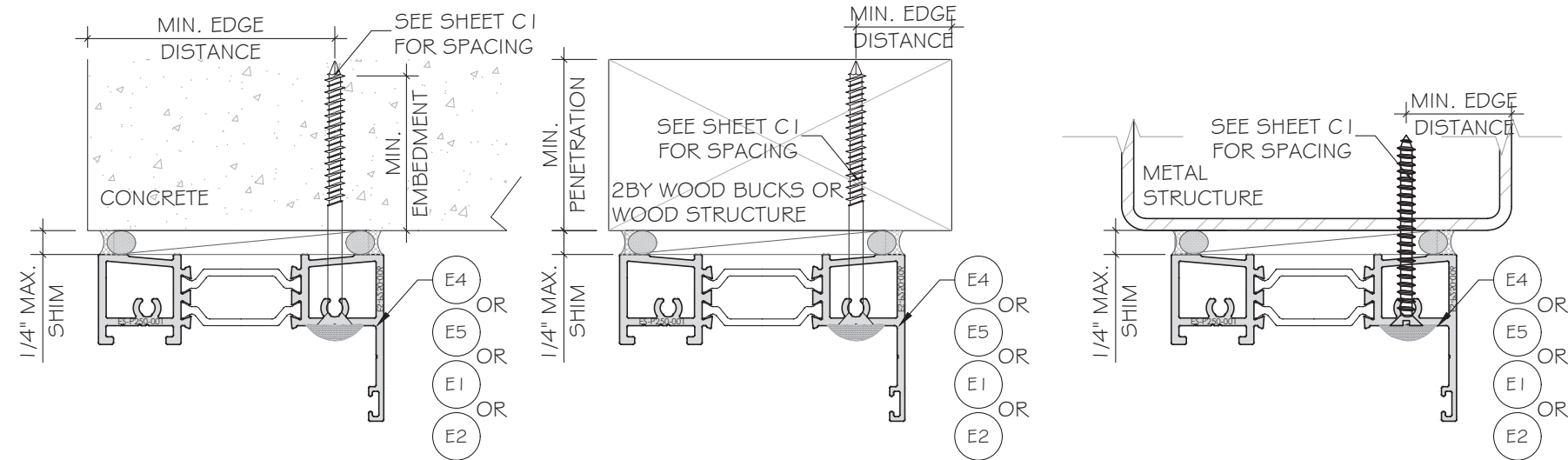
ANCHOR TYPE 'A' - 3/16" DIA. ULTRACON BY 'DEWALT'(Fu=164 KSI, Fy=117 KSI)  
 INTO 2BY WOOD BUCKS (SG=0.55 MIN.) WITH 1 1/2" MIN. PENETRATION.  
 OR THRU 1 BY WOOD BUCK INTO CONCRETE WITH MIN. 1 3/4" EMBEDMENT.

ANCHOR TYPE 'B' - 3/16" DIA. ULTRACON BY 'DEWALT'(Fu=164 KSI, Fy=117 KSI)  
 DIRECTLY INTO CONCRETE (Fc=3KSI MIN.)  
 W/1 3/4" MIN. EMBEDMENT

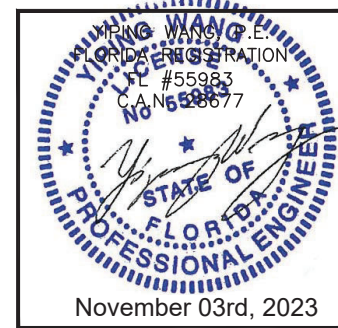
ANCHOR TYPE 'C' - #10 - SELF DRILLING SCREW GRADE 5  
 (Fu=120KSI, Fy=92KSI)  
 INTO F.B.C. APPROVED MULLIONS  
 OR INTO METAL STRUCTURES.  
 (3) THREADS MIN. PENETRATION BEYOND METAL SUBSTRATE

ALUMINUM: 1/8" THK. MIN. (6063-T5, MIN)  
 STEEL: 1/8" THK. MIN. (Fy=36KSI MIN)  
 STEEL: 1/8" THK. STL STRUCTURE  
 (STEEL IN CONTACT WITH ALUMINUM TO BE PLATED OR PAINTED)

TYPICAL EDGE DISTANCE  
 INTO CONCRETE = 2 1/2" MIN.  
 INTO WOOD = 1" MIN.  
 INTO METAL STRUCTURE = 1/2" MIN.



FLORIDA APPROVAL:  
**FL#40521.2**



**MCY ENGINEERING, INC.**  
 GLAZING CONSULTANTS  
 12781 MIRAMAR PKWY, STE. 301  
 MIRAMAR, FL 33027 P: 305.271.0117  
 www.MCYEngineering.com mcy@mcyengineering.com

**ES-P300 CASEMENT WINDOW - NON IMPACT**  
 E.S. WINDOWS, INC.  
 10653 NE QUAYBRIDGE CT.  
 MIAMI, FL 33138  
 TEL. (305) 624-7775

Drawn Date	Scale
09.21.2023	
Drawn By	Description
JAMES	UPDATE TO FBC 2023
Date	
09.21.2023	
Rev. No.	
R2	
DRAWING NO.	
AD21-52	
Sheet No.	
A1	
7 OF 20	

TYPICAL ANCHOR TYPES:

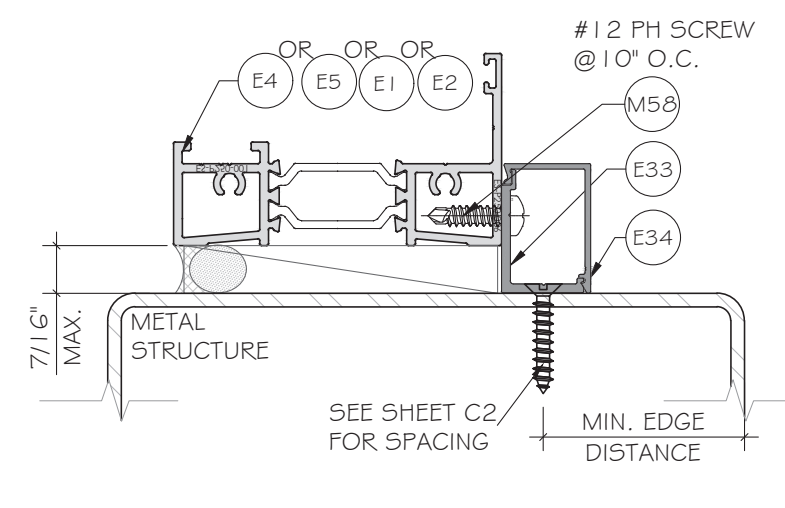
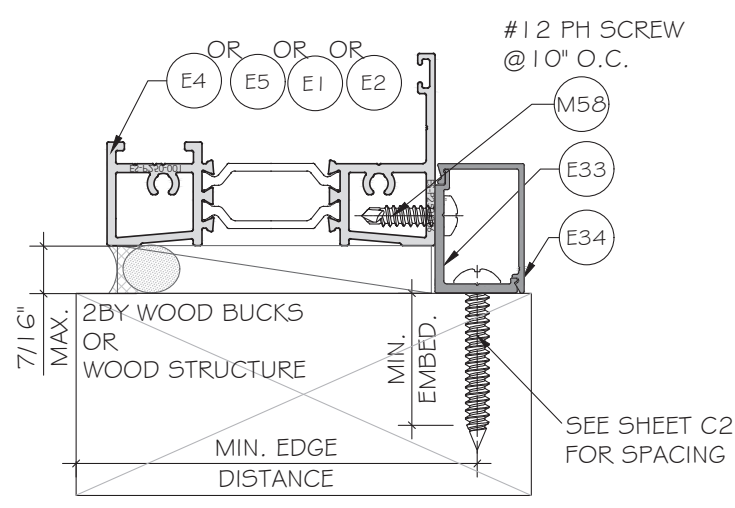
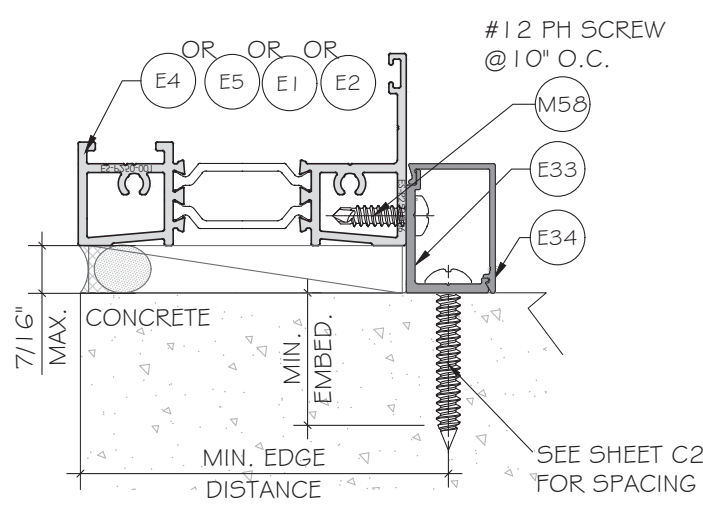
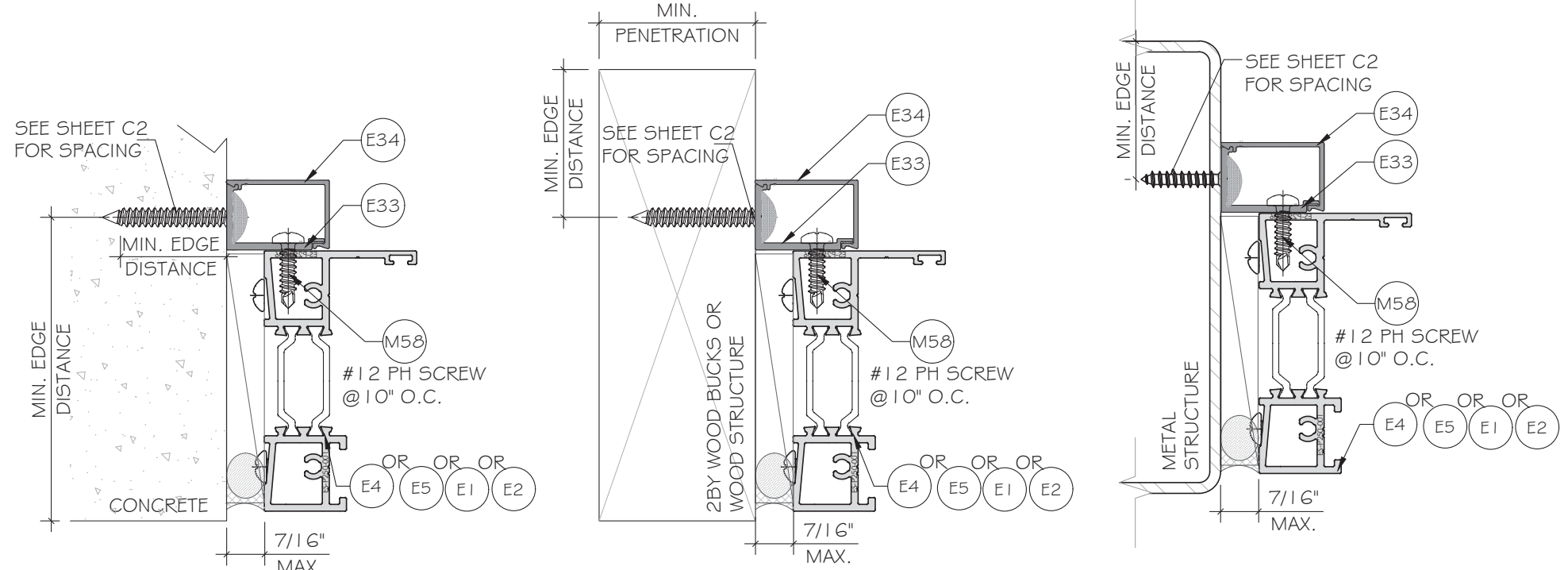
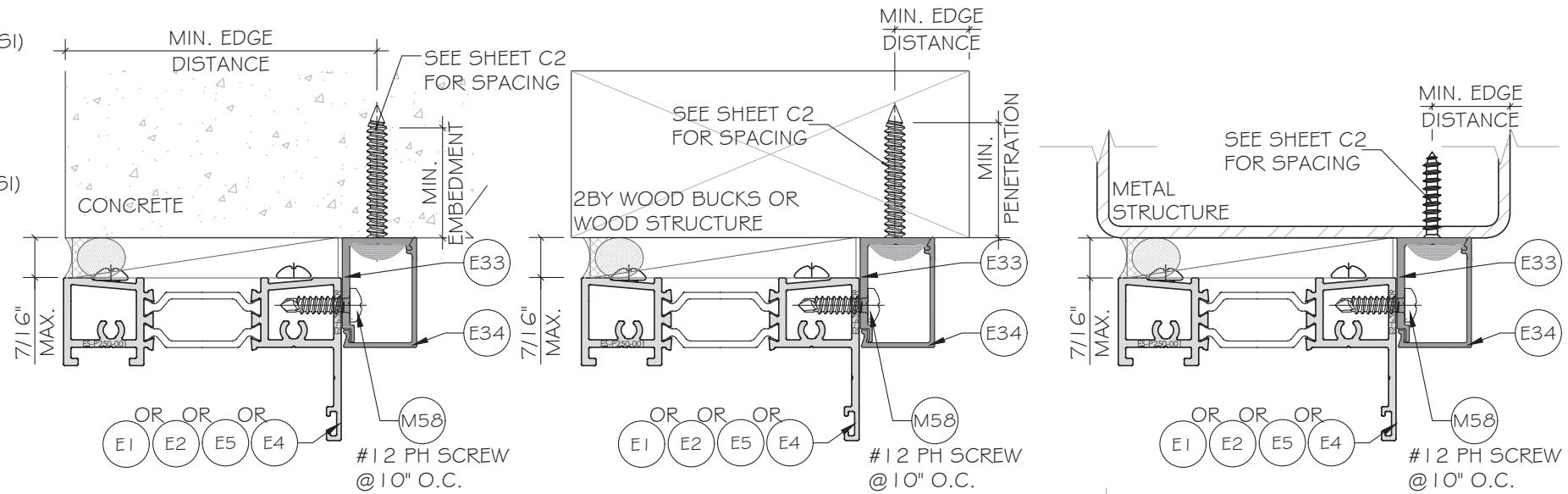
ANCHOR TYPE 'D' - 1/4" DIA. ULTRACON+ BY 'DEWALT'(Fu=164KSI, Fy=148KSI) INTO 2BY WOOD BUCKS (SG=0.55 MIN.) WITH 1 1/2" MIN. PENETRATION. OR THRU 1 BY WOOD BUCK INTO CONCRETE

ANCHOR TYPE 'E' - 1/4" DIA. ULTRACON+ BY 'DEWALT'(Fu=164KSI, Fy=148KSI) DIRECTLY INTO CONCRETE Fc=3KSI MIN. W/1 3/4" MIN. EMBEDMENT

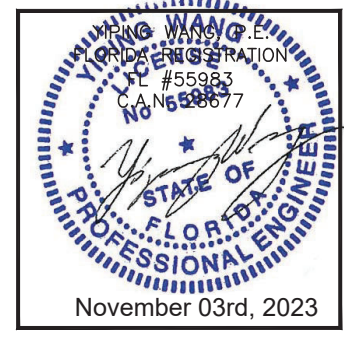
ANCHOR TYPE 'F' - 1/4" DIA. SEFL-DRILLING SCREWS, GRADE 5 (Fu=120KSI, Fy=92KSI) INTO METAL STRUCTURES. (3) THREADS MIN. PENETRATION BEYOND METAL SUBSTRATE

ALUMINUM: 1/8" THK. MIN. (6063-T5, MIN)  
 STEEL: 1/8" THK. MIN. (Fy=36KSI MIN)  
 STEEL: 1 2GA STL STRUCTURE  
 (STEEL IN CONTACT WITH ALUMINUM TO BE PLATED OR PAINTED)

TYPICAL EDGE DISTANCE  
 INTO CONCRETE = 2 1/2" MIN.  
 INTO WOOD = 1" MIN.  
 INTO METAL STRUCTURE = 1/2" MIN.



FLORIDA APPROVAL:  
**FL#40521.2**



**MCY ENGINEERING, INC.**  
 GLAZING CONSULTANTS  
 12781 MIRAMAR PKWY, STE. 301  
 MIRAMAR, FL 33027 P: 305.271.0117  
 www.MCYEngineering.com mcy@mcyengineering.com

**ES-P300 CASEMENT WINDOW - NON IMPACT**  
 E.S.WINDOWS, INC.  
 10653 NE QUAYBRIDGE CT.  
 MIAMI, FL 33138  
 TEL: (305) 624-7775

Drawn Date	Scale
09.21.2023	
Drawn By	Description
JAMES	UPDATE TO FBC 2023
Date	
09.21.2023	
Rev. No.	
R2	
DRAWING NO.	
AD21-52	
Sheet No.	
8 OF 20	



TYPICAL ANCHOR TYPES:

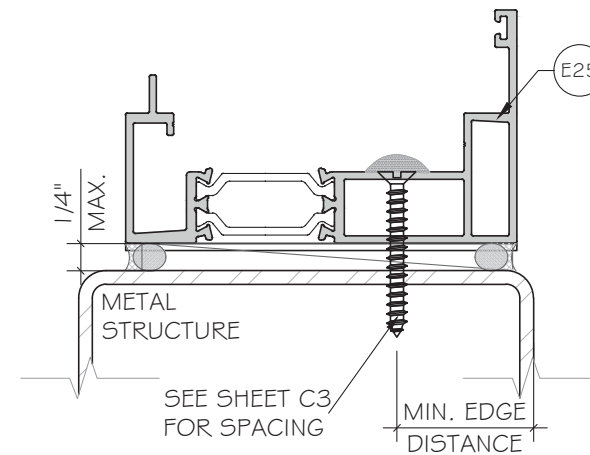
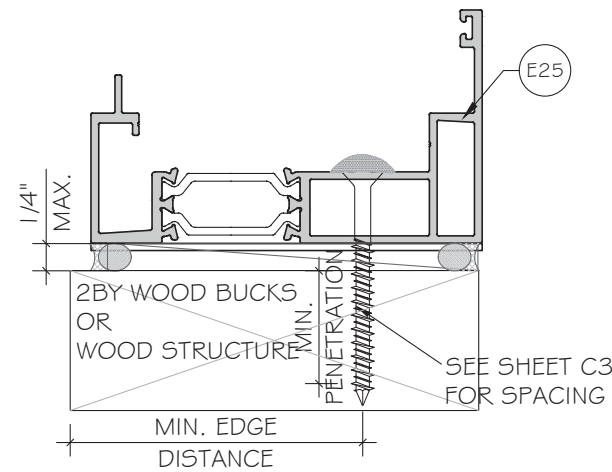
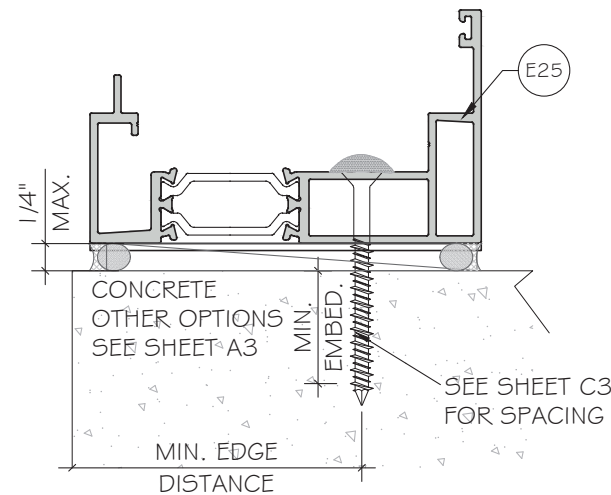
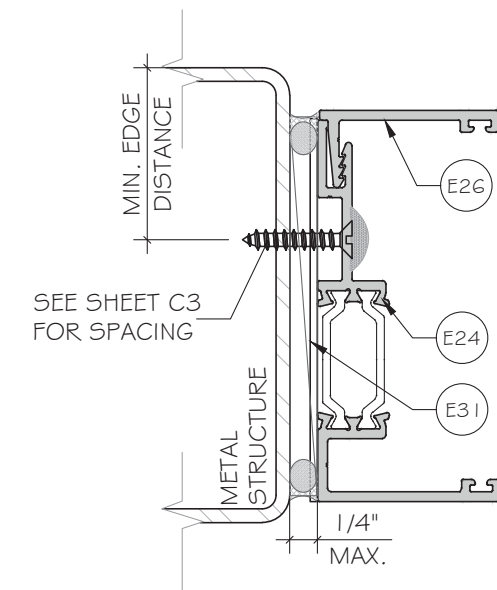
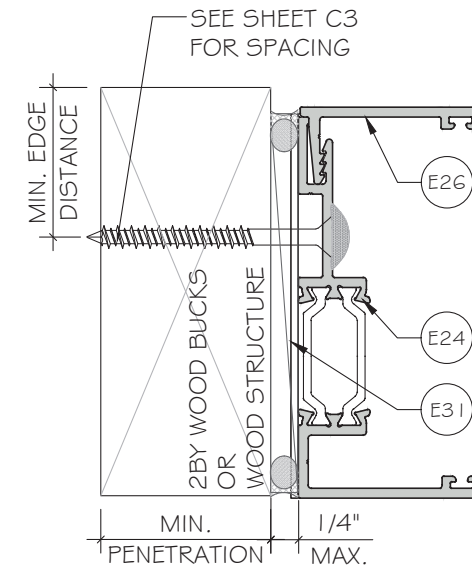
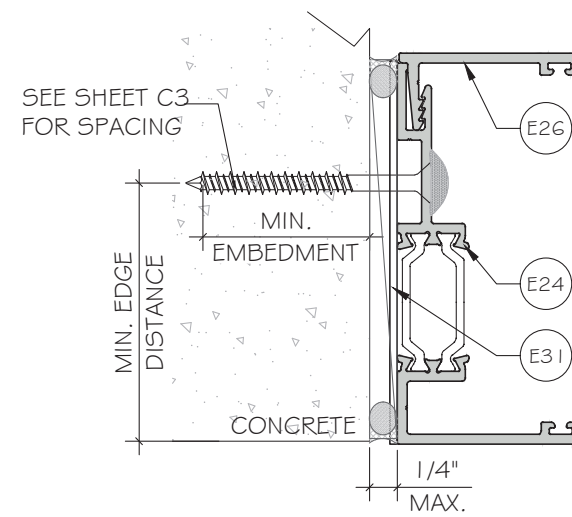
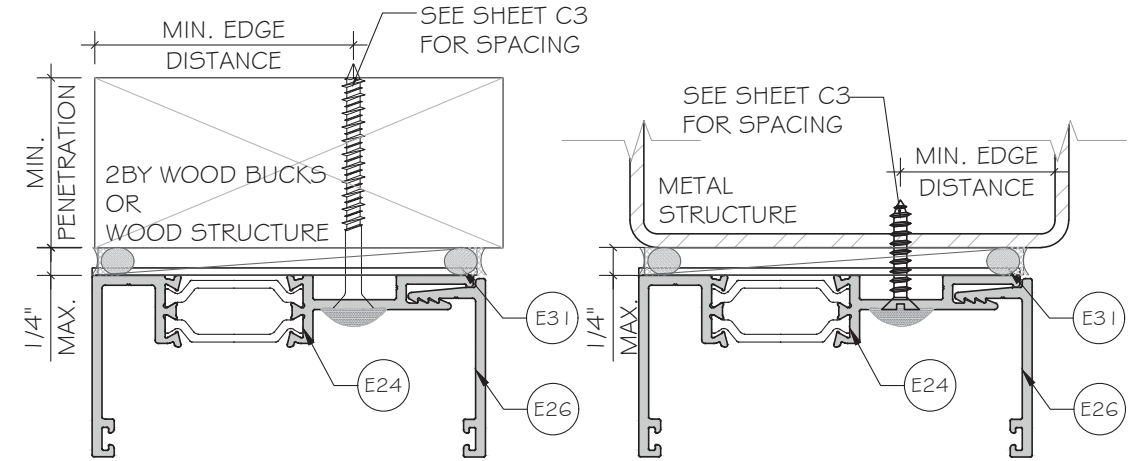
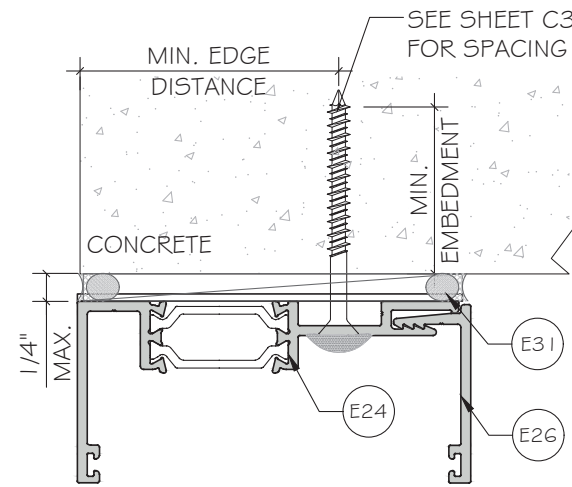
ANCHOR TYPE 'D' - 1/4" DIA. ULTRACON+ BY 'DEWALT'(Fu= 164KSI, Fy= 148KSI)  
 INTO 2BY WOOD BUCKS (SG=0.55 MIN.) WITH 1 1/2" MIN. PENETRATION.  
 OR THRU 1 BY WOOD BUCK INTO CONCRETE

ANCHOR TYPE 'E' - 1/4" DIA. ULTRACON+ BY 'DEWALT'(Fu= 164KSI, Fy= 148KSI)  
 DIRECTLY INTO CONCRETE  $f_c=3KSI$  MIN.  
 W/1 3/4" MIN. EMBEDMENT

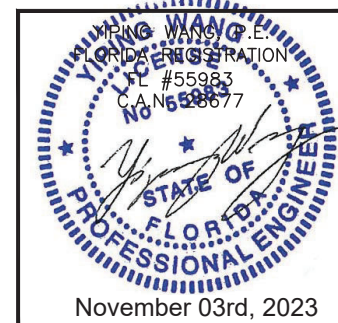
ANCHOR TYPE 'F' - 1/4" DIA. SEFL-DRILLING SCREWS, GRADE 5  
 (Fu= 120KSI, Fy=92KSI)  
 INTO METAL STRUCTURES.  
 (3) THREADS MIN. PENETRATION BEYOND METAL SUBSTRATE

ALUMINUM: 1/8" THK. MIN. (6063-T5, MIN)  
 STEEL: 1/8" THK. MIN. (Fy=36KSI MIN)  
 STEEL: 12GA STL STRUCTURE  
 (STEEL IN CONTACT WITH ALUMINUM TO BE PLATED OR PAINTED)

TYPICAL EDGE DISTANCE  
 INTO CONCRETE = 2 1/2" MIN.  
 INTO WOOD = 1" MIN.  
 INTO METAL STRUCTURE = 1/2" MIN.



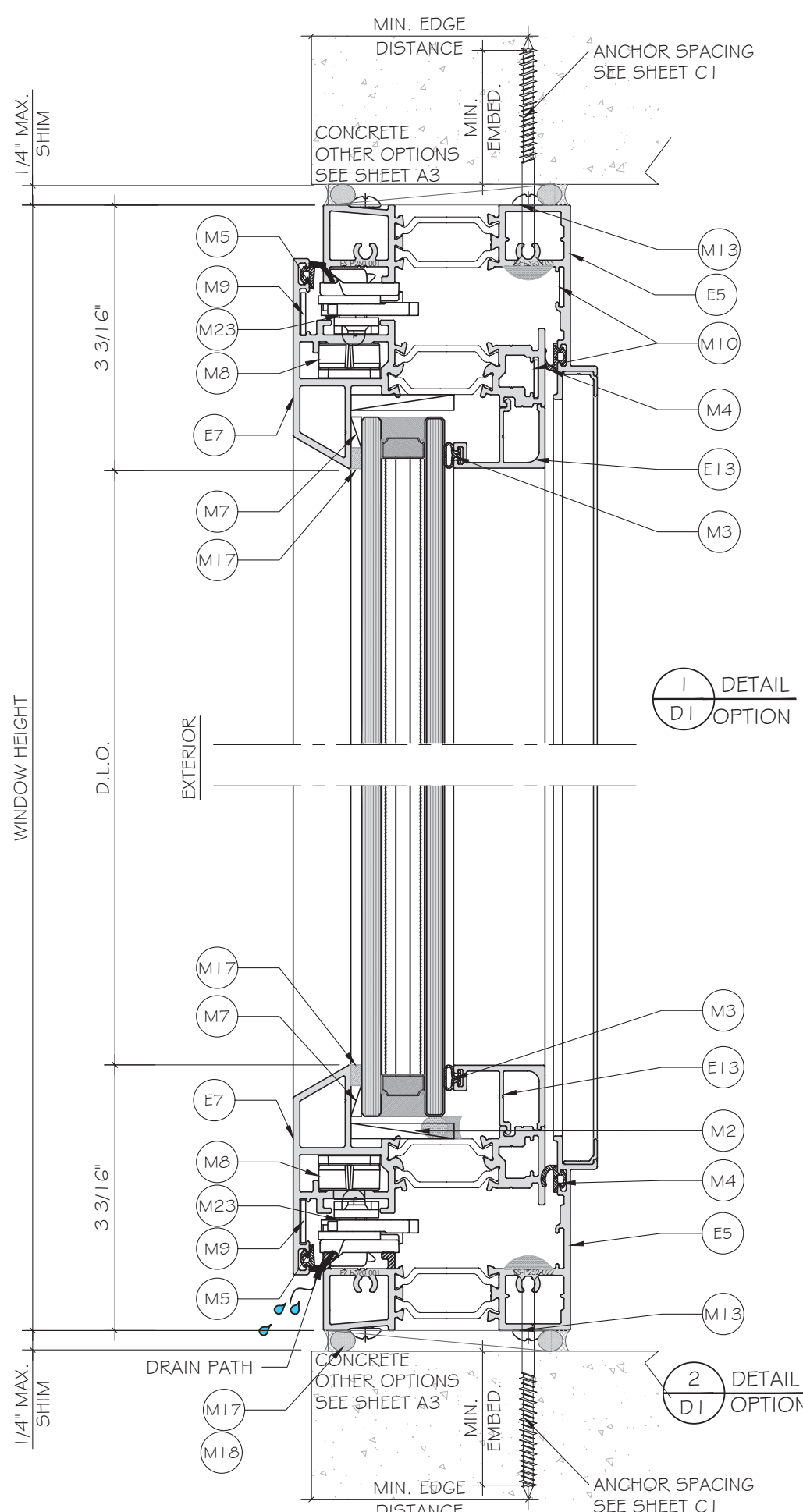
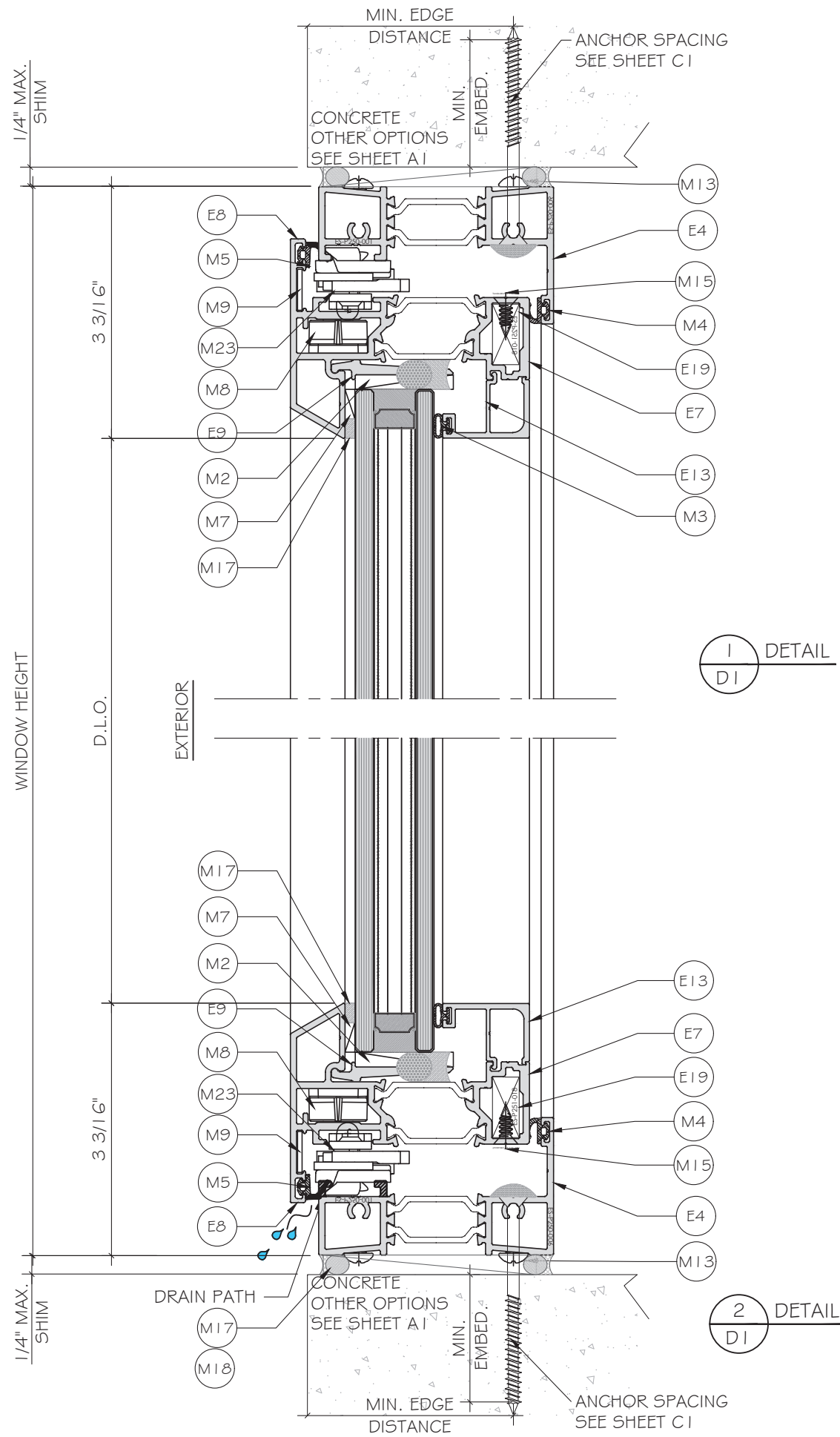
FLORIDA APPROVAL:  
**FL#40521.2**



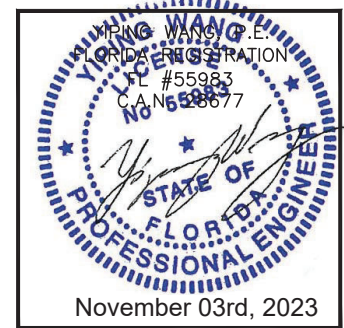
**MCY ENGINEERING, INC.**  
 GLAZING CONSULTANTS  
 12781 MIRAMAR PKWY, STE. 301  
 MIRAMAR, FL 33027 P: 305.271.0117  
 www.MCYEngineering.com mcy@mcyengineering.com

**ES-P300 CASEMENT WINDOW - NON IMPACT**  
 E.S.WINDOWS, INC.  
 10653 NE QUAYBRIDGE CT.  
 MIAMI, FL 33138  
 TEL. (305) 624-7775

Drawn Date	Scale
09.21.2023	
Drawn By	Description
JAMES	UPDATE TO FBC 2023
Date	
09.21.2023	
Rev. No.	
R2	
DRAWING NO.	
AD21-52	
Sheet No.	
9 OF 20	



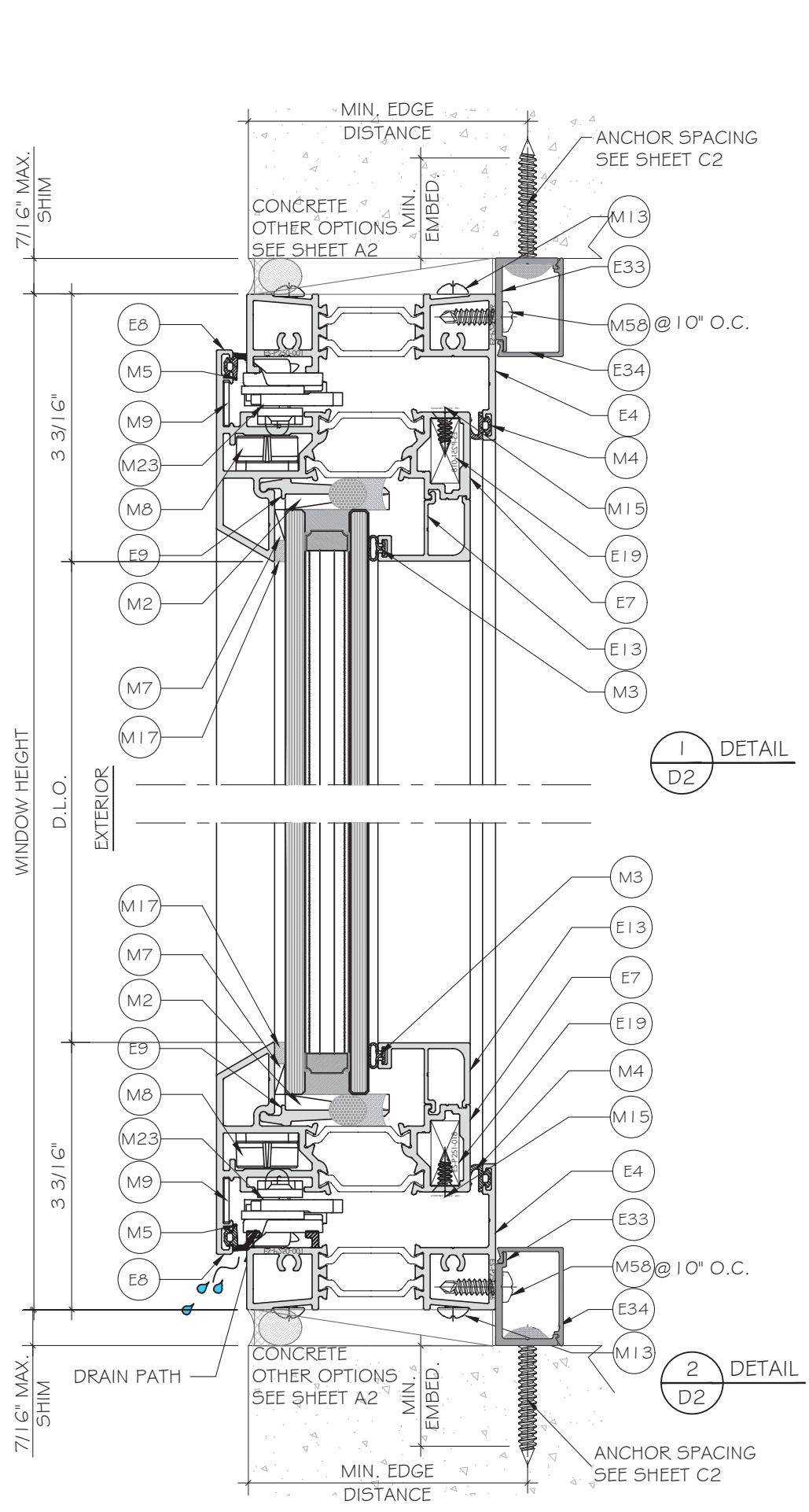
FLORIDA APPROVAL:  
**FL#40521.2**



**MCY ENGINEERING, INC.**  
 GLAZING CONSULTANTS  
 12781 MIRAMAR PKWY, STE. 301  
 MIRAMAR, FL 33027 P: 305.271.0117  
 www.MCYEngineering.com mcy@mcyengineering.com

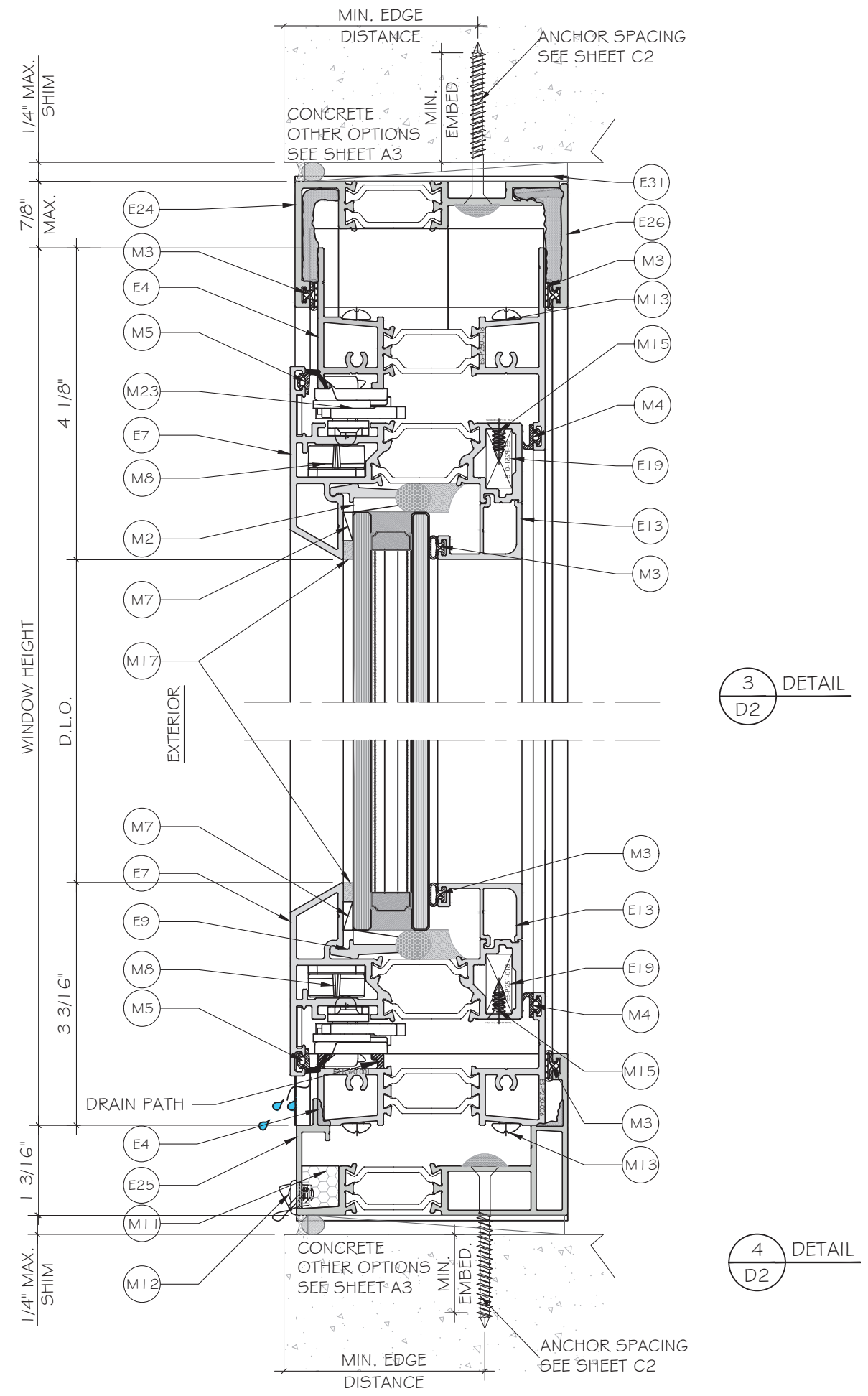
**ES-P300 CASEMENT WINDOW - NON IMPACT**  
 E.S. WINDOWS, INC.  
 10653 NE QUAYBRIDGE CT.  
 MIAMI, FL 33138  
 TEL. (305) 624-7775

Rev. No.	Date	Drawn By	Description
R2	09.21.2023	JAMES	UPDATE TO FBC 2023
Drawn Date: 09.21.2023 Scale: _____ Drawing No.: <b>AD21-52</b> Sheet No.: <b>D1</b> of <b>10</b>			



1 DETAIL  
D2

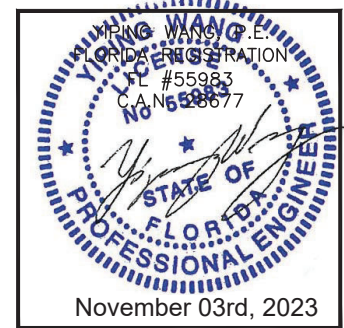
2 DETAIL  
D2



3 DETAIL  
D2

4 DETAIL  
D2

FLORIDA APPROVAL:  
**FL#40521.2**

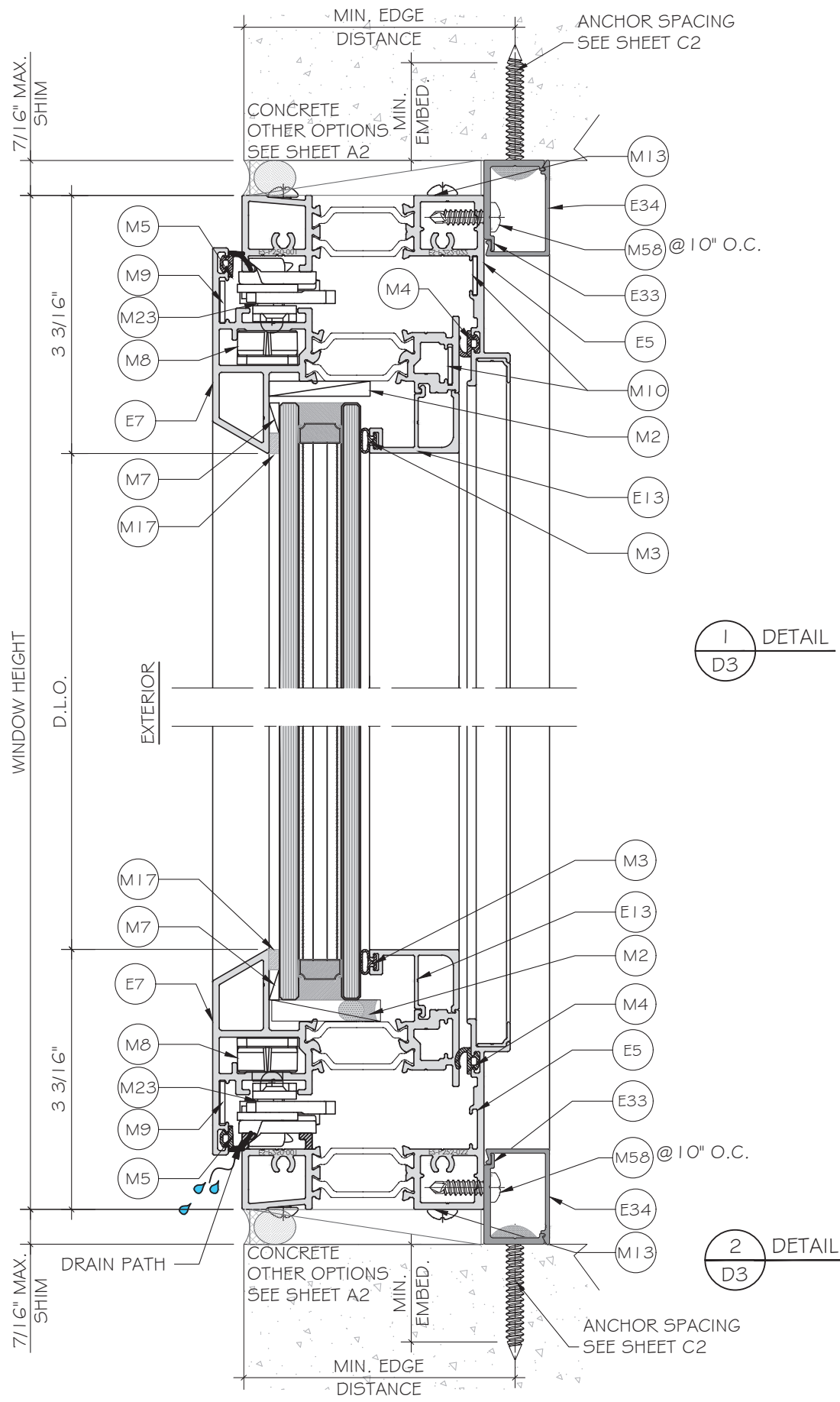


**MCY ENGINEERING, INC.**  
GLAZING CONSULTANTS  
12781 MIRAMAR PKWY, STE. 301  
MIRAMAR, FL 33027 P: 305.271.0117  
www.MCYEngineering.com mcy@mcyengineering.com

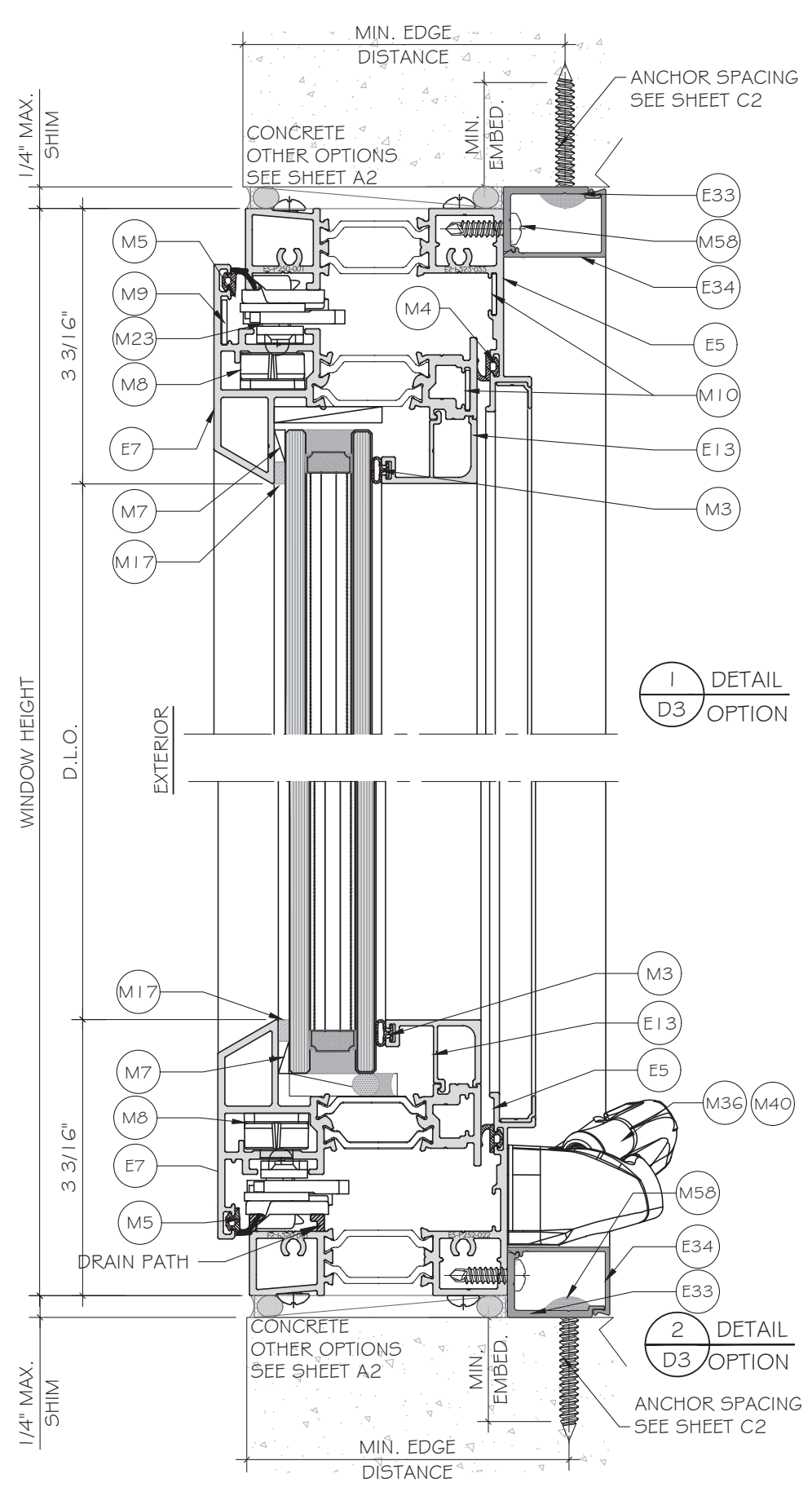
**ES-P300 CASEMENT WINDOW - NON IMPACT**  
E.S. WINDOWS, INC.  
10653 NE QUAYBRIDGE CT.  
MIAMI, FL 33138  
TEL. (305) 624-7775

Rev. No.	Date	Drawn By	Description
R2	09.21.2023	JAMES	UPDATE TO FBC 2023

Drawn Date: 09.21.2023  
Scale:  
DRAWING NO.: **AD21-52**  
Sheet No.: **D2**  
11 OF 20



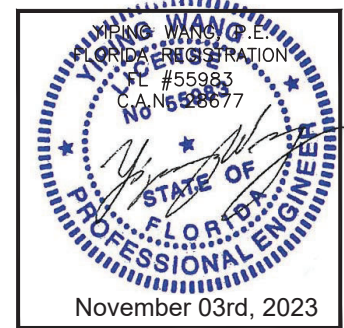
1  
D3  
DETAIL



1  
D3  
DETAIL  
OPTION

2  
D3  
DETAIL  
OPTION

FLORIDA APPROVAL:  
FL#40521.2

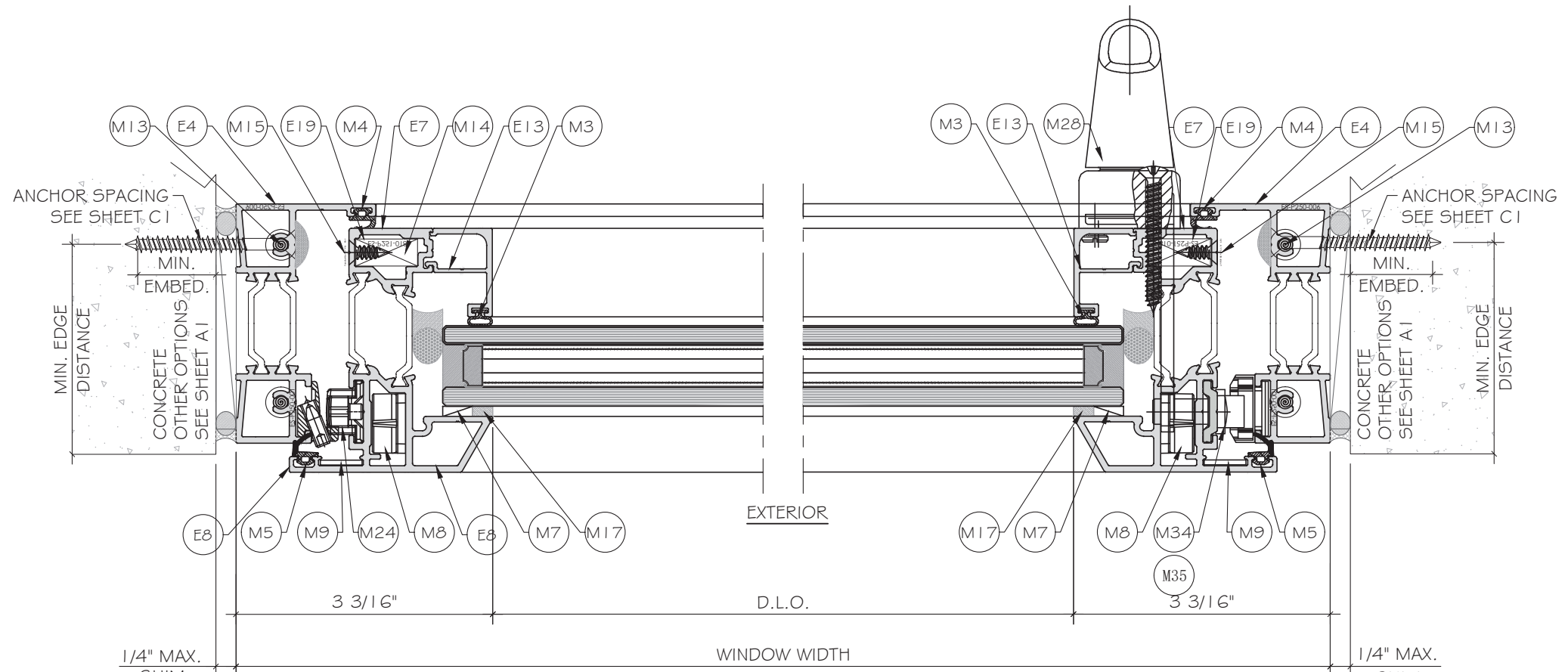


**MCY ENGINEERING, INC.**  
GLAZING CONSULTANTS  
12781 MIRAMAR PKWY, STE. 301  
MIRAMAR, FL 33027 P: 305.271.0117  
www.MCYEngineering.com mcy@mcyengineering.com

**ES-P300 CASEMENT WINDOW - NON IMPACT**  
E.S. WINDOWS, INC.  
10653 NE QUAYBRIDGE CT.  
MIAMI, FL 33138  
TEL. (305) 624-7775

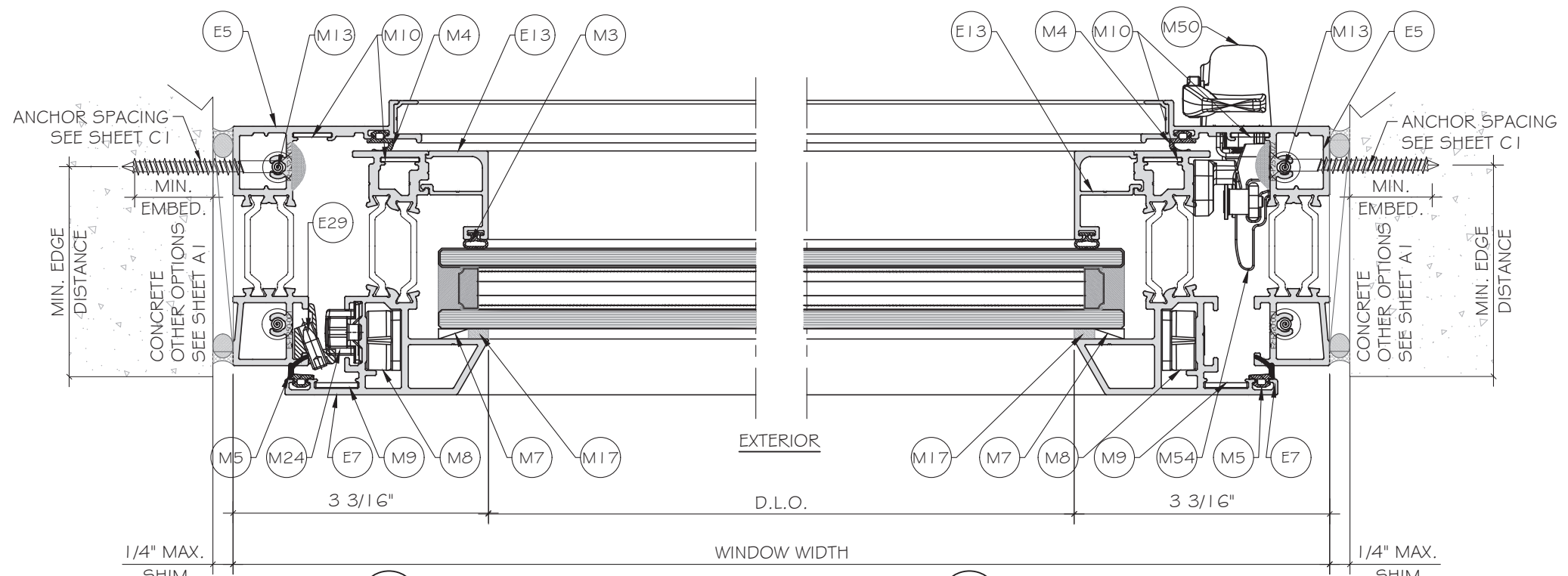
Rev. No.	Date	Drawn By	Description
R2	09.21.2023	JAMES	UPDATE TO FCC 2023

Drawn Date: 09.21.2023  
Scale:  
DRAWING NO.: AD21-52  
Sheet No.: D3  
12 OF 20



1 DETAIL  
D4

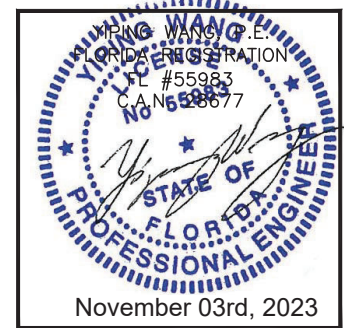
2 DETAIL  
D4



1 DETAIL  
D4 OPTION

2 DETAIL  
D4 OPTION

FLORIDA APPROVAL:  
FL#40521.2



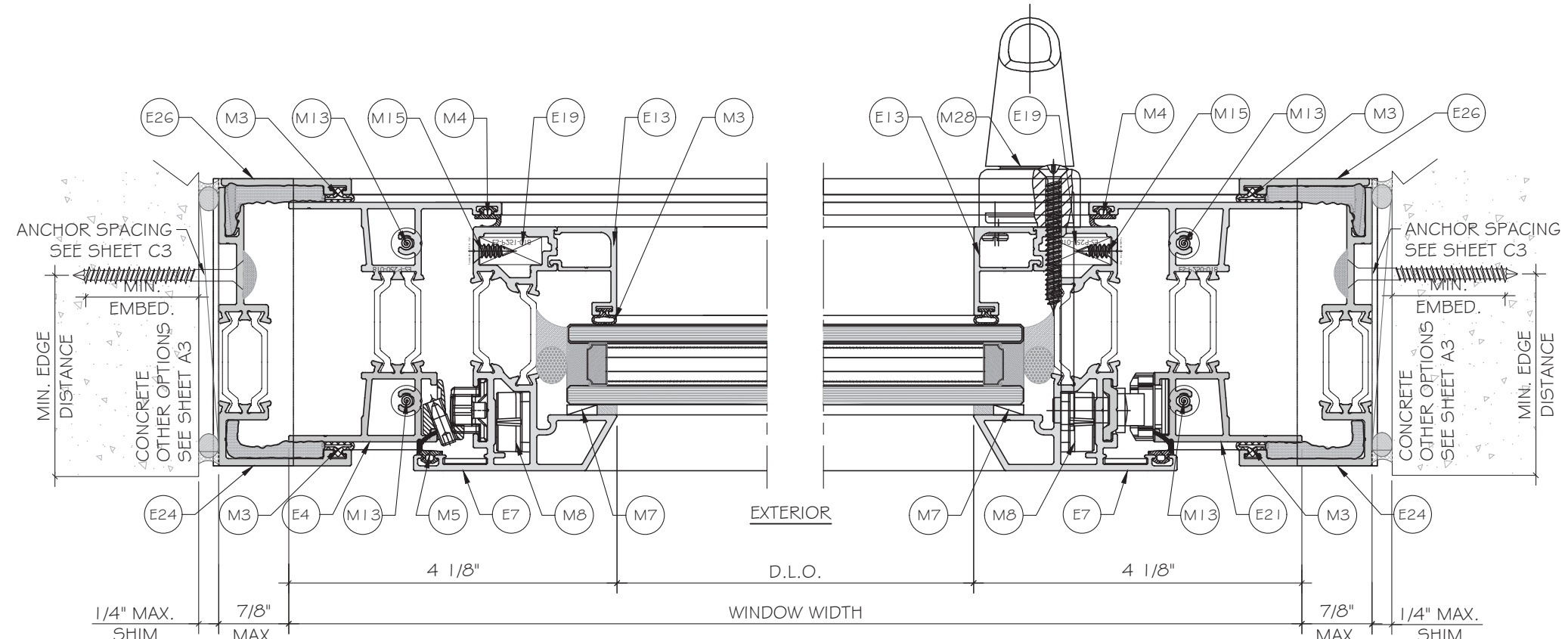
ES-P300 CASEMENT WINDOW - NON IMPACT

E.S. WINDOWS, INC.  
10653 NE QUAYBRIDGE CT.  
MIAMI, FL 33138  
TEL. (305) 624-7775

Rev. No.	Date	Drawn By	Description
R2	09.21.2023	JAMES	UPDATE TO FBC 2023

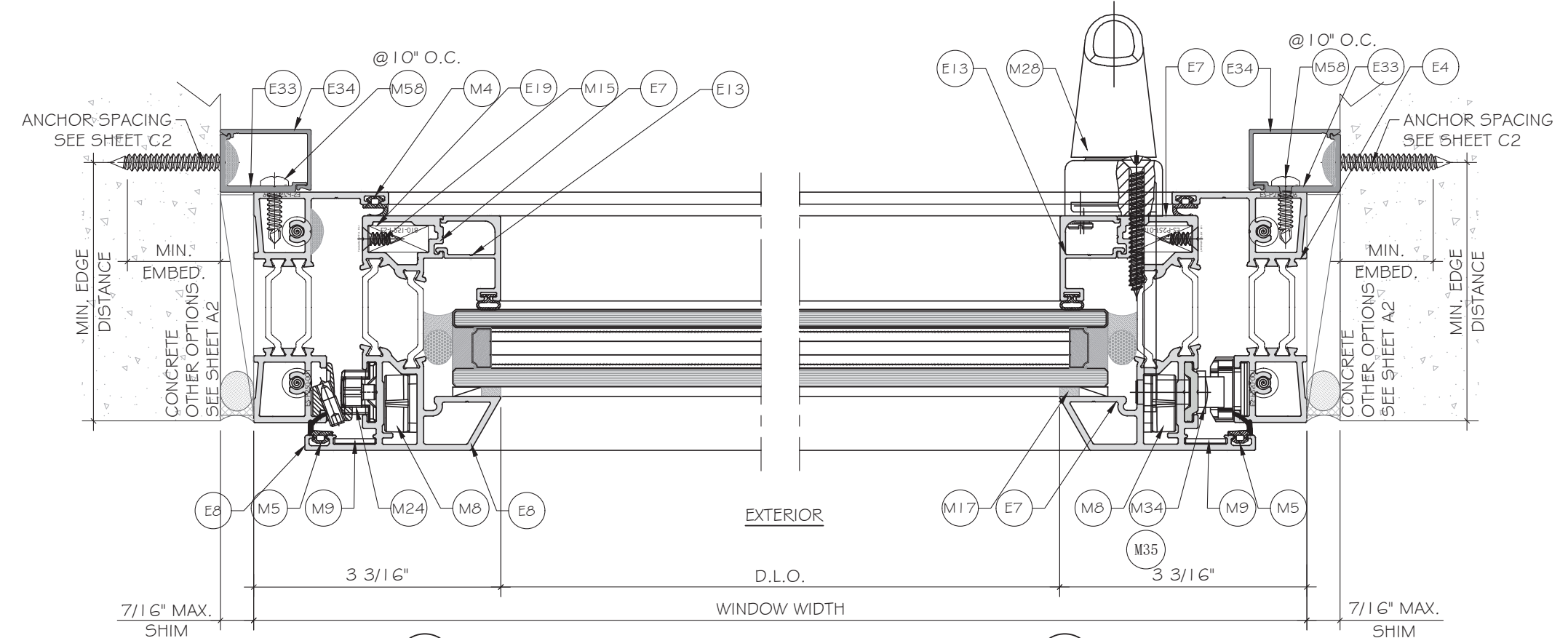
Drawn Date	Scale
09.21.2023	
DRAWING NO.	
AD21-52	
D4	
Sheet No.	
13 OF 20	

**MCY ENGINEERING, INC.**  
GLAZING CONSULTANTS  
www.MCYEngineering.com  
12781 MIRAMAR PKWY, STE. 301  
MIRAMAR, FL 33027  
P: 305.271.0117  
mcy@mcyengineering.com



1  
D5  
DETAIL

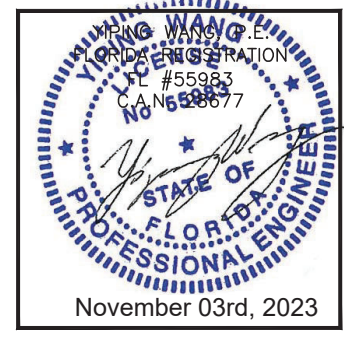
2  
D5  
DETAIL



3  
D5  
DETAIL

4  
D5  
DETAIL

FLORIDA APPROVAL:  
FL#40521.2



**MCY ENGINEERING, INC.**  
GLAZING CONSULTANTS  
12781 MIRAMAR PKWY, STE. 301  
MIRAMAR, FL 33027 P: 305.271.0117  
www.MCYEngineering.com mcy@mcyengineering.com

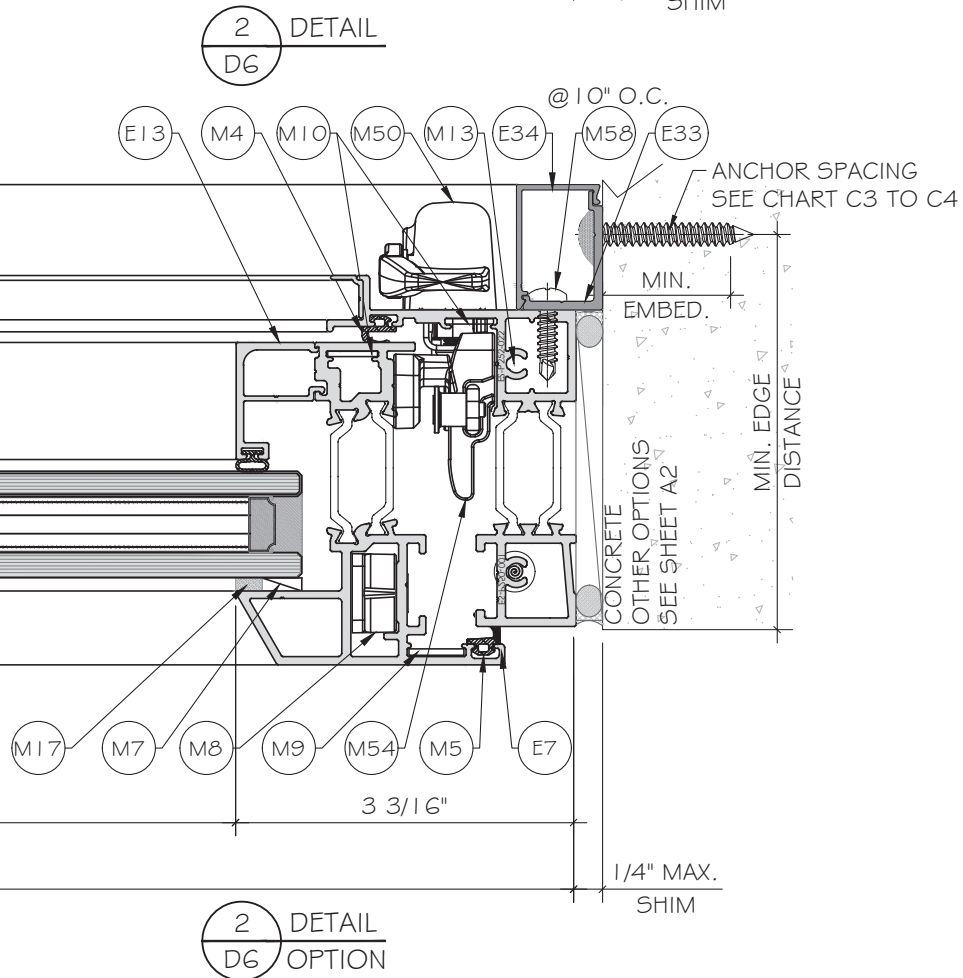
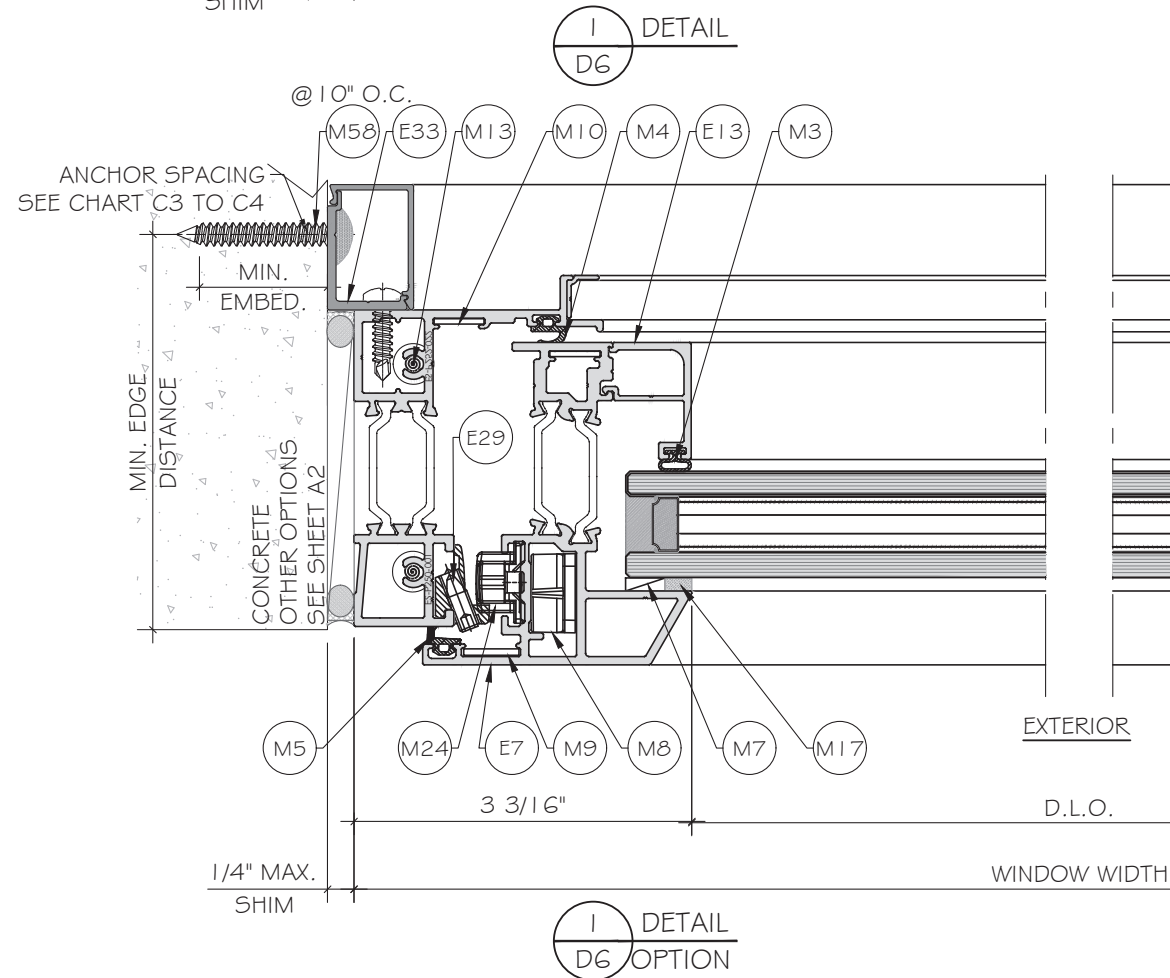
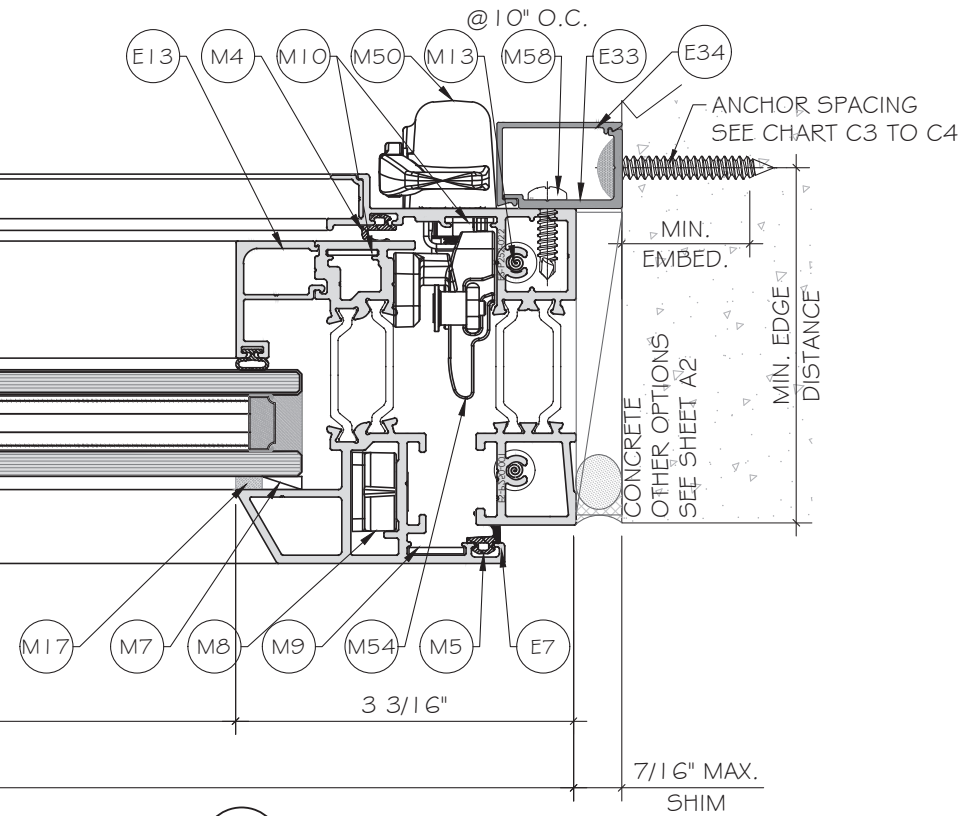
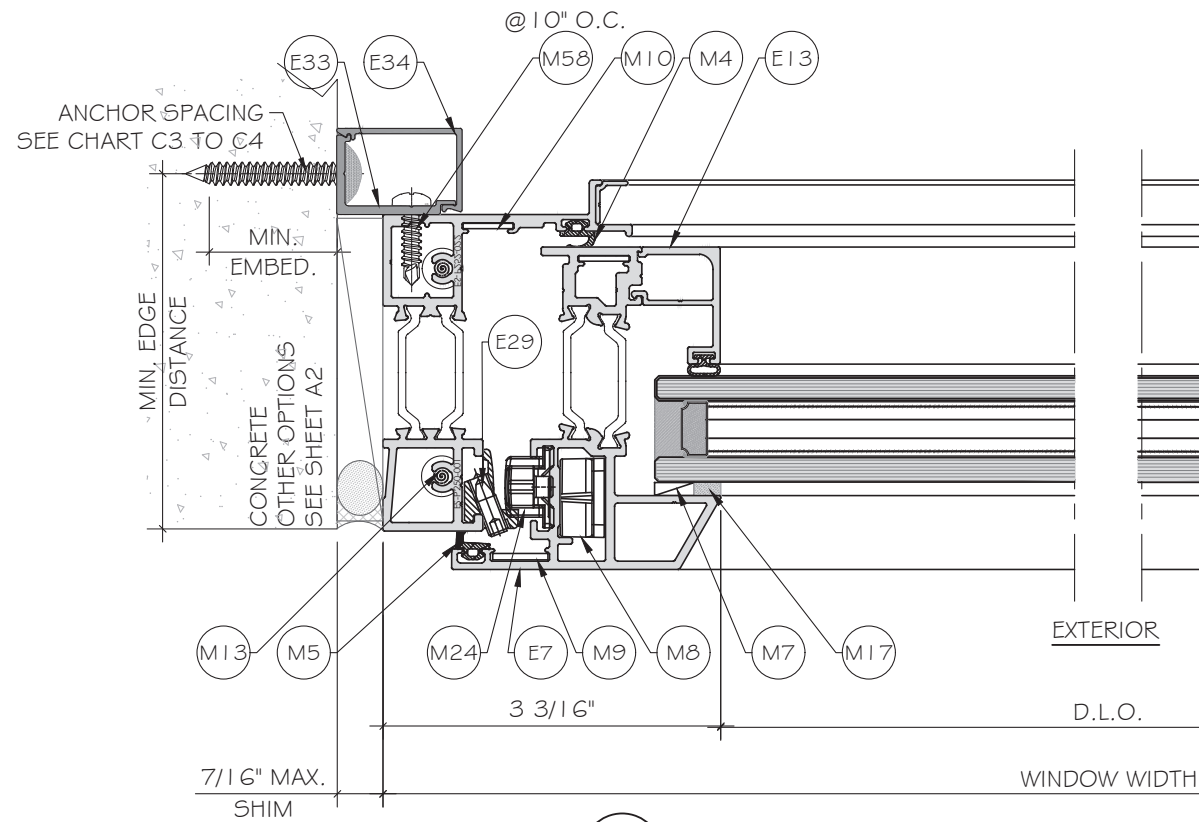
**ES-P300 CASEMENT WINDOW - NON IMPACT**  
E.S. WINDOWS, INC.  
10653 NE QUAYBRIDGE CT.  
MIAMI, FL 33138  
TEL: (305) 624-7775

Rev. No.	Date	Drawn By	Description
R2	09.21.2023	JAMES	UPDATE TO FBC 2023

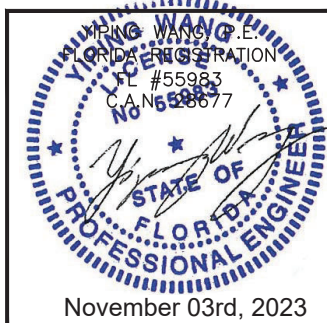
Drawn Date: 09.21.2023 Scale: \_\_\_\_\_

DRAWING NO. AD21-52

Sheet No. D5 14 OF 20



FLORIDA APPROVAL:  
FL#40521.2



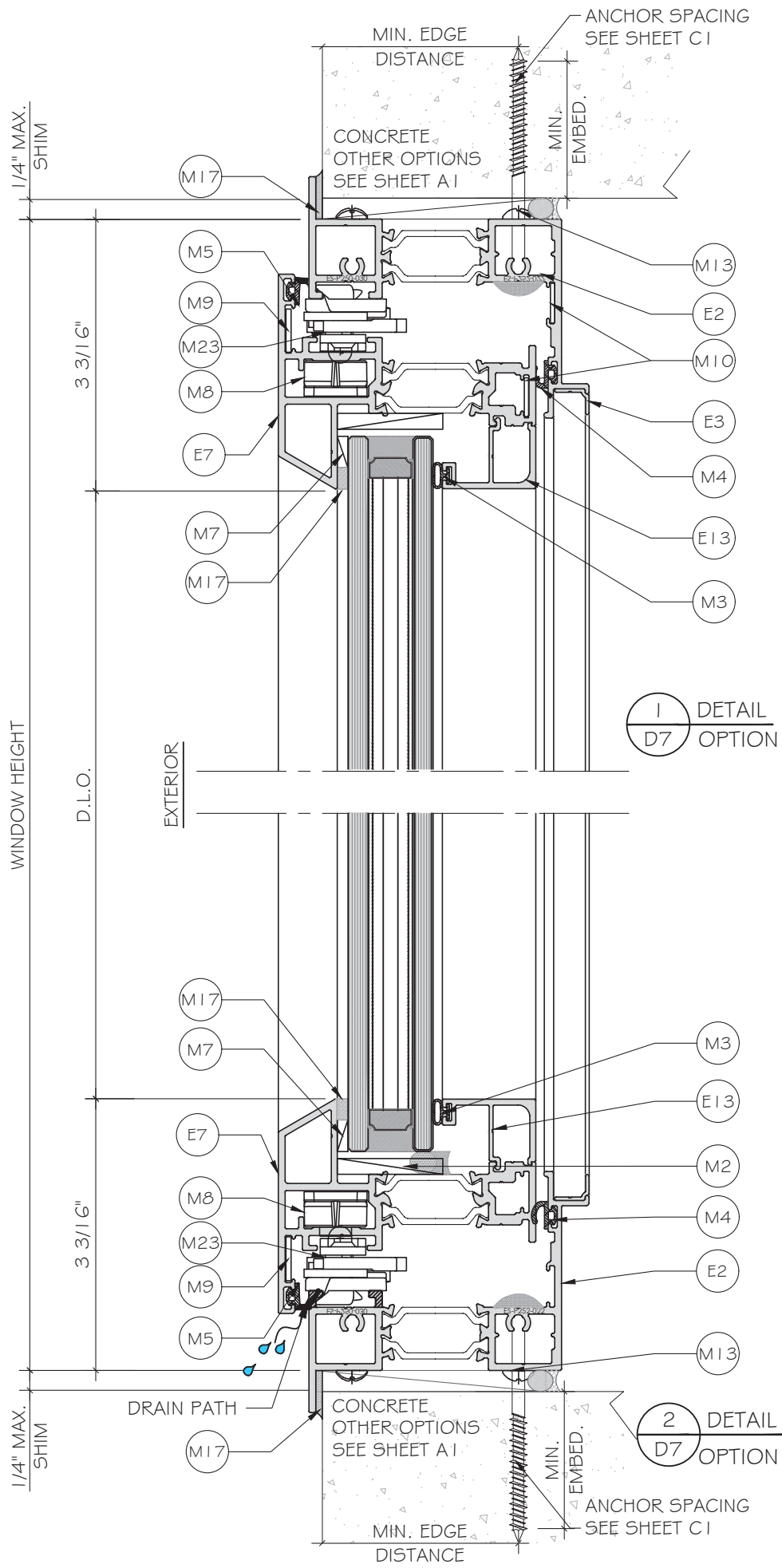
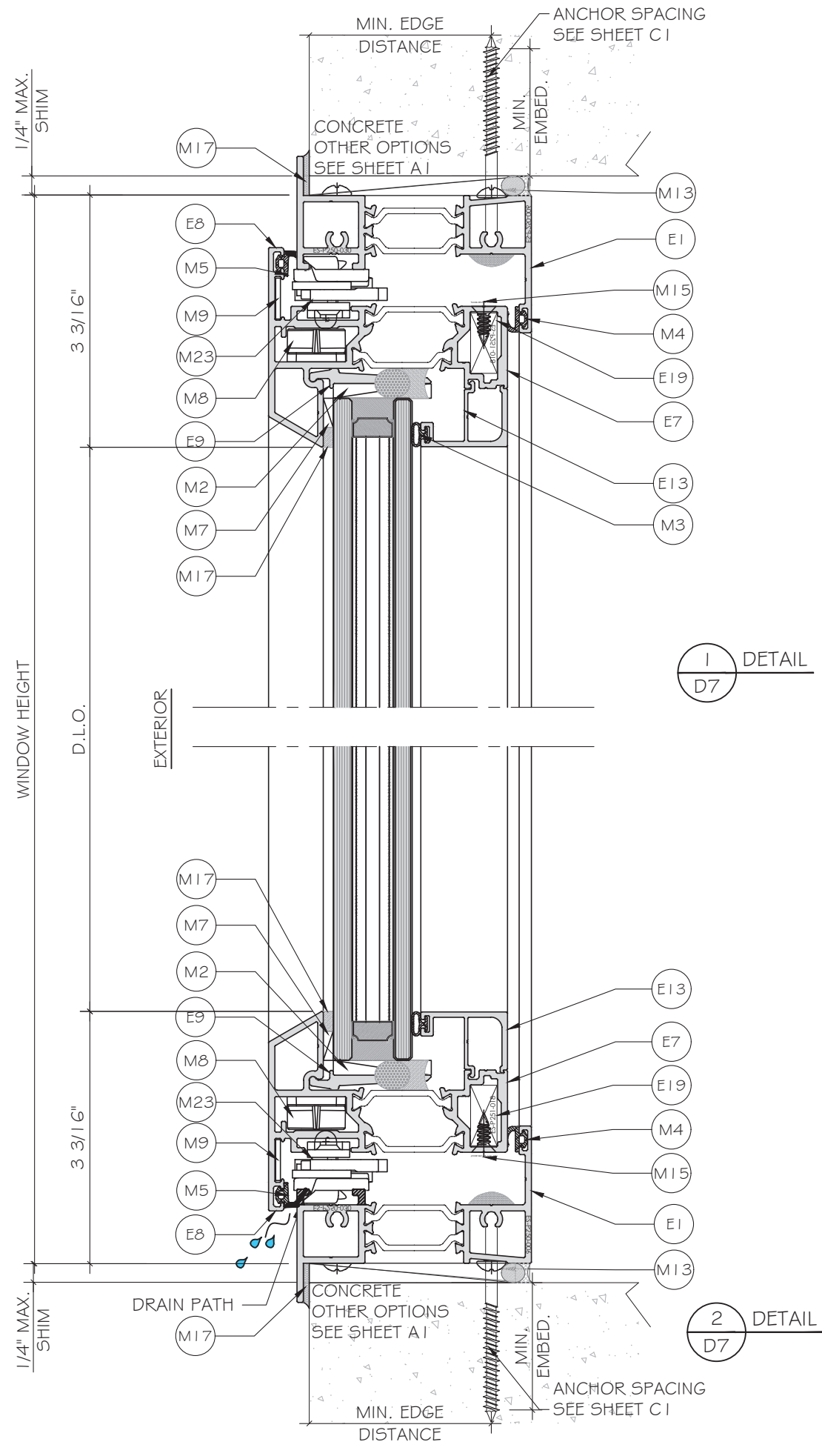
ES-P300 CASEMENT WINDOW - NON IMPACT

E.S. WINDOWS, INC.  
10653 NE QUAYBRIDGE CT.  
MIAMI, FL 33138  
TEL. (305) 624-7775

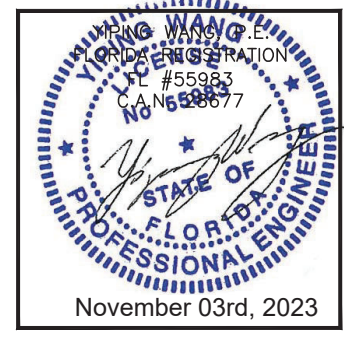
Rev. No.	Date	Drawn By	Description
R2	09.21.2023	JAMES	UPDATE TO FBC 2023

Drawn Date: 09.21.2023  
Scale:  
DRAWING NO.: AD21-52

D6  
Sheet No.: 15 OF 20



FLORIDA APPROVAL:  
**FL#40521.2**

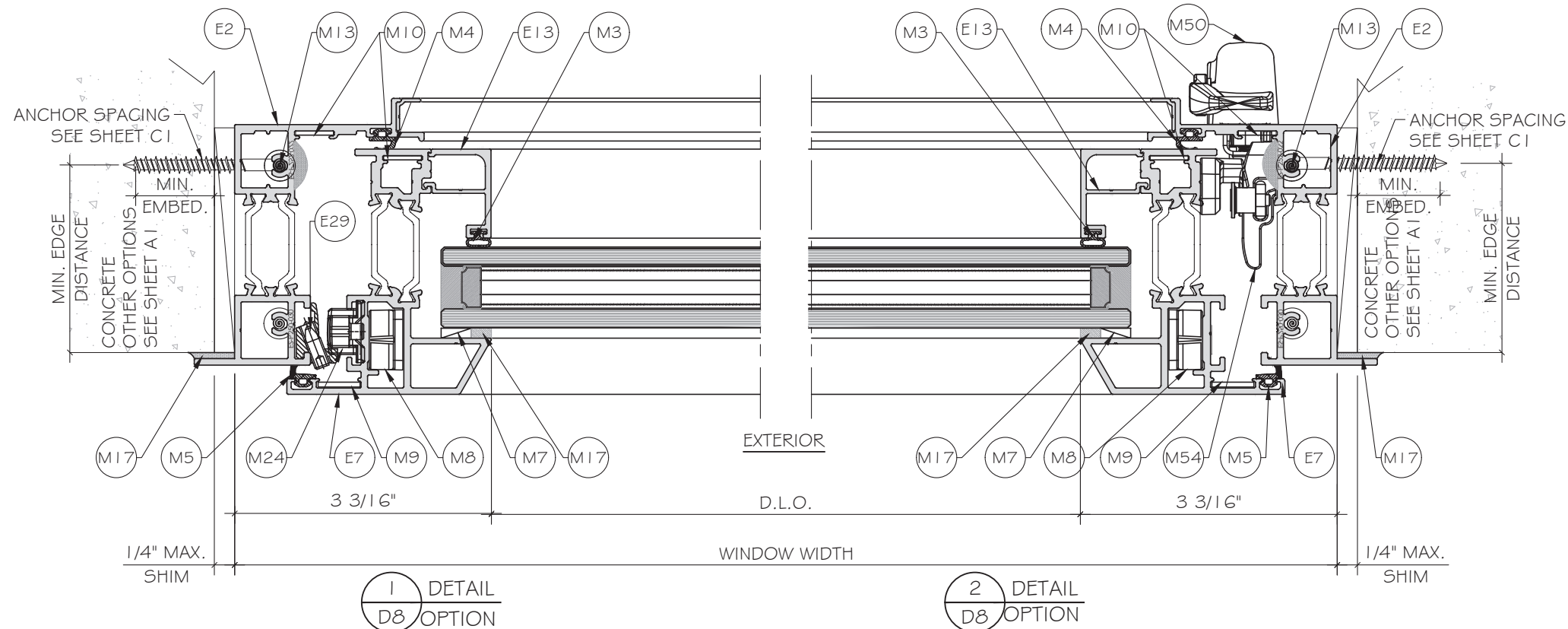
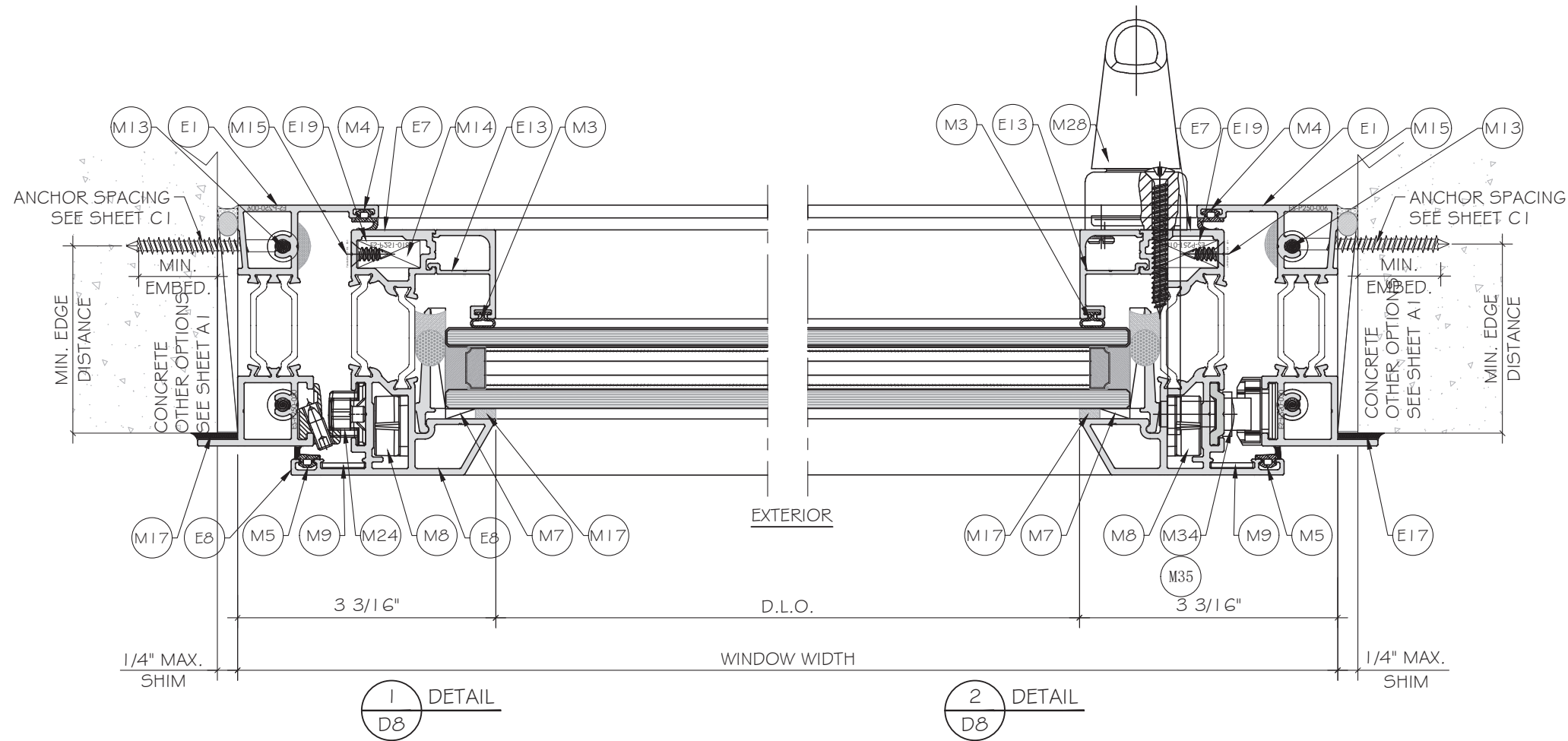


**MCY ENGINEERING, INC.**  
 GLAZING CONSULTANTS  
 12781 MIRAMAR PKWY, STE. 301  
 MIRAMAR, FL 33027 P: 305.271.0117  
 www.MCYEngineering.com mcy@mcyengineering.com

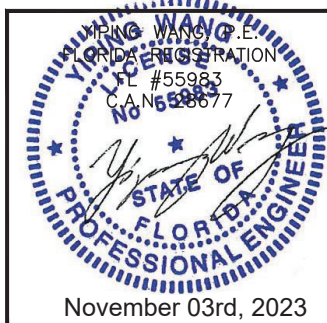
**ES-P300 CASEMENT WINDOW - NON IMPACT**  
 E.S. WINDOWS, INC.  
 10653 NE QUAYBRIDGE CT.  
 MIAMI, FL 33138  
 TEL. (305) 624-7775

Rev. No.	Date	Drawn By	Description
R2	09.21.2023	JAMES	UPDATE TO FBC 2023
Drawn Date: 09.21.2023		Scale:	
DRAWING NO. AD21-52			
D7			
Sheet No. 16 OF 20			



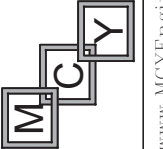


FLORIDA APPROVAL:  
FL#40521.2



ES-P300 CASEMENT WINDOW - NON IMPACT

E.S. WINDOWS, INC.  
10653 NE QUAYBRIDGE CT.  
MIAMI, FL 33138  
TEL. (305) 624-7775

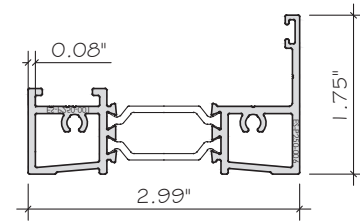


MCY ENGINEERING, INC.  
GLAZING CONSULTANTS

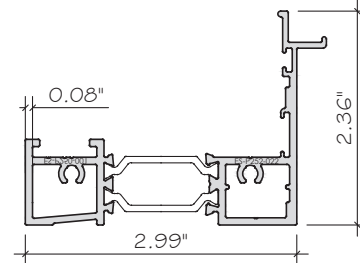
12781 MIRAMAR PKWY, STE. 301  
MIRAMAR, FL 33027 P: 305.271.0117  
www.MCYEngineering.com mcy@mcyengineering.com

Rev. No.	Date	Drawn By	Description
R2	09.21.2023	JAMES	UPDATE TO FBC 2023

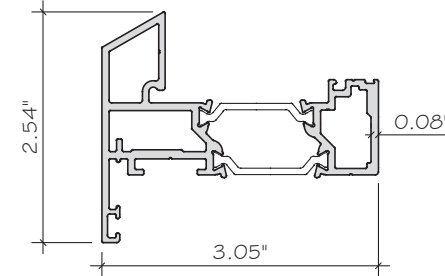
Drawn Date	Scale
09.21.2023	
DRAWING NO.	
AD21-52	
SHEET NO.	
D8	
SHEET NO.	
17 OF 20	



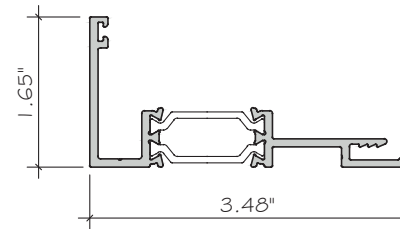
E4 FRAME FOR VENT  
ES-P300-504  
ALUM. 6063-T6



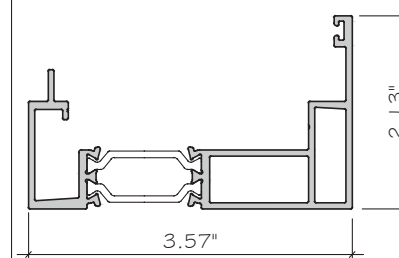
E5 FRAME FOR VENT  
ES-P300-505  
ALUM. 6063-T6



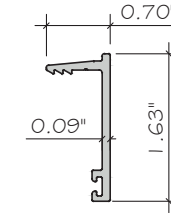
E7 SASH  
ES-P300-507  
ALUM. 6063-T6



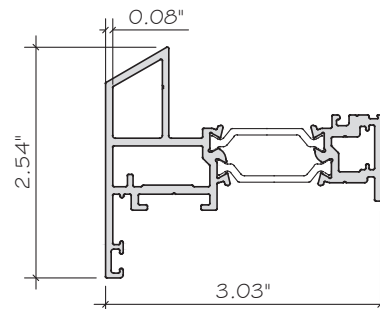
E24 RECEPTOR HEAD/JAMB  
ES-P300-523  
ALUM. 6063-T6



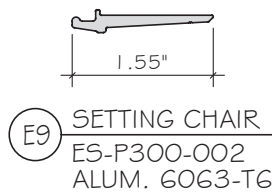
E25 RECEPTOR SILL  
ES-P300-524  
ALUM. 6063-T6



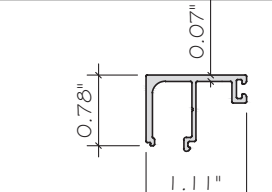
E26 RECEPTOR STOP  
ES-P300-021  
ALUM. 6063-T6



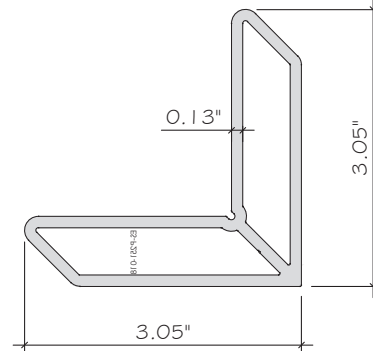
E8 SASH (SCREEN)  
ES-P300-508  
ALUM. 6063-T6



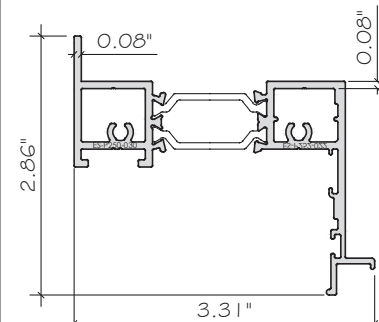
E9 SETTING CHAIR  
ES-P300-002  
ALUM. 6063-T6



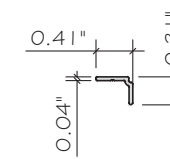
E13 NON-IMPACT GLASS STOP@SASH  
ES-P300-014  
ALUM. 6063-T5



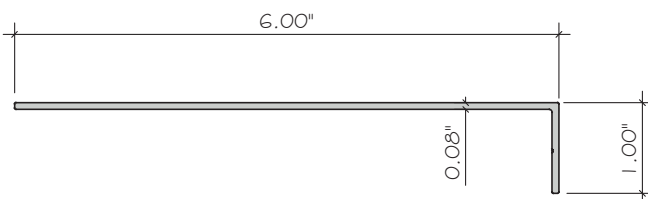
E19 CORNER JOINT  
ES-P251-018  
ALUM. 6063-T6



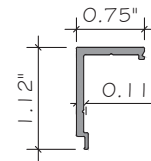
E2 FRAME FOR ROTO-OPERADOR  
WITH FLANGE  
ES-P300-532. ALUM.6063-T6



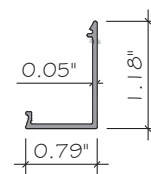
E3 SCREEN HOLDER  
ES-5020. ALUM.6063-T5



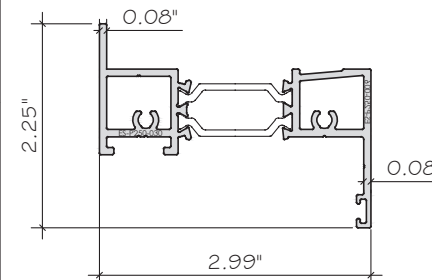
E31 END DAM  
ES-CF-001  
ALUM. 6063-T5



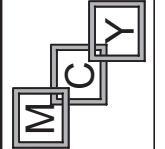
E33 STRAP ANCHOR  
ES-P300-006  
ALUM. 6063-T5



E34 STRAP ANCHOR COVER  
ES-P300-007



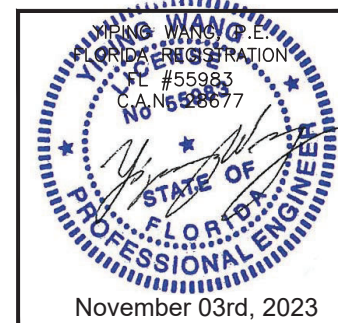
E1 FRAME FOR LEVER  
HANDLE WITH FLANGE  
ES-P300-531. ALUM.6063-T6



**MCY ENGINEERING, INC.**  
GLAZING CONSULTANTS  
12781 MIRAMAR PKWY, STE. 301  
MIRAMAR, FL 33027 P: 305.271.0117  
www.MCYEngineering.com mcy@mcyengineering.com

**ES-P300 CASEMENT WINDOW - NON IMPACT**  
E.S.WINDOWS, INC.  
10653 NE QUAYBRIDGE CT.  
MIAMI, FL 33138  
TEL.(305) 624-7775

FLORIDA APPROVAL:  
FL#40521.2



Rev. No.	Date	Drawn By	Description
R2	09.21.2023	JAMES	UPDATE TO FBC 2023
Drawn Date: 09.21.2023 Scale:			
DRAWING NO. AD21-52			
PART			
Sheet No. 18 OF 20			

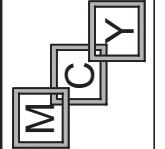
MATERIAL LIST

CODE	PART	DESCRIPTION	MATERIAL
M1	ES-SD451-G04	WEDGE GASKET @ GLASS PERIMETER	SILICONE 60±3 SHORE A
M2	ES-4520-BO2A	SETTING BLOCK @	SILICONE 80±3 SHORE A
M3	ES-5008A	BUBBLE GASKET @ GLAZING BEAD & RECEPTOR	SILICONE 65±5 SHORE A
M4	ES-PI312T-G03A	INTERNAL FLIPPER GASKET @ FRAME PERIMETER	SILICONE
M5	ES-EL300-G01	EXTERNAL FLIPPER GASKET @ FRAME PERIMETER	EPDM CO-EXTRUDED 65±5 SHORE A
M7	1/8" x 1/2" TAPE	DOUBLE FACE TAPE	POLYURETHENE
M8	CORNER JOINT 0423	CORNER JOINT	DIE CAST ALUMINUM
M9	HC-200-M01	CORNER LOCK FOR SASH	ALUMINUM
M10	PJS-43-SS	CORNER KEY PJS-43-SS	STAINLESS STEEL
M11	WPSA-N1	RETICULATED FOAM 30PPI 3/4" x 3/4" x 2"	OPEN CELL FOAM
M12	I222-XXX	WEEP HOLE COVER	NYLON 6
M13	#10 x 1/4" PH	ASSEMBLY SCREW	STAINLESS STEEL
M14	#8 x 5/8" PH	SCREW FOR GLASS STOP	STAINLESS STEEL
M15	#8 x 1/2" FH	SCREW FOR CORNER KEY ES-P251-018	STAINLESS STEEL
M16	DOWSIL 983	STRUCTURAL SILICONE	SILICONE
M17	DOWSIL 791	SEALANT SILICONE	SILICONE
M18	BACKER ROD 1/2"	BACKER ROD OPEN CELL @ GLASS PERIMETER	POLYURETHENE
M20	SHIM I529-XX	ALUMINUM	STAINLESS STEEL
M21	#10x1/2" P.H.	SCREW FOR HINGE	STAINLESS STEEL
M23	I204R/L CONCEALED HINGE	FOR CASEMENT	STAINLESS STEEL
M24	SNUBBER	SNBB KIT MV LM 4200-D V5/B5 TS B1 857052	STAINLESS STEEL
M26	LIIT DEVICE 876-XX	FOR CASEMENT	STAINLESS STEEL
M27	#10x1/2" F.H. PIN IN - HEX	SECURITY SCREW FOR LIMIT DEVICE	STAINLESS STEEL
M28	HANDLE SI LINE LM DA	LEVER HANDLE	DIE CAST ALUMINUM
M29	FLANGE SLEEVE 899915	FLANGE SLEEVE	STAINLESS STEEL
M30	SCREW M5X6-A2 701.9002.5015.A0	SCREW FOR LEVER HANDLE	STAINLESS STEEL
M31	HANDLE PIN MFKL0020-000010	HANDLE PIN	STAINLESS STEEL
M32	HANDLE FORK 72 mm	FOR HANDLE	DIE CAST ALUMINUM
M33	#8x1/2" F.H.	SCREW FOR LEVER HANDLE	STAINLESS STEEL
M34	LOCK PLATE I315-54	FOR LOCKING SYSTEM	DIE CAST ALUMINUM
M35	EURO GROOVE KEEPER I303-260	FOR LOCKING SYSTEM	DIE CAST ALUMINUM

MATERIAL LIST

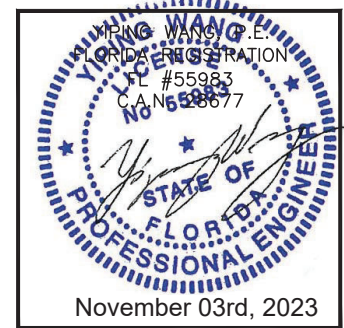
CODE	PART	DESCRIPTION	MATERIAL
M37	CO11-0169-085 or CO11-170-085 HEAVY OPERATOR	14.5" HD OPERATOR	STAINLESS STEEL
M39	CO11-2203 OPERATOR SPACER 3.5MM	FOR CASEMENT	ABS
M40	CO11-0606-XXX RH OPERATOR HANDLE	FOR AWNING & CASEMENT	ABS
M41	CO11-0605-XXX LH OPERATOR HANDLE	FOR CASEMENT	ABS
M42	CO11-0171-085 OR CO11-0172-085 14.5" OPERATOR TRACK	FOR CASEMENT	STAINLESS STEEL
M44	CO01-4000 OPERATOR CLAMP WASHER	FOR OPERATOR (x2)	STAINLESS STEEL
M45	#8-32 x 1/2" FH	OPERATOR CLAMP WASHER (x1)	STAINLESS STEEL
M46	#8 x 1/2" FH	SCREW FOR BRACKET & TRACK	STAINLESS STEEL
M47	#8 x 3/4" PH	SCREW FOR OPERATOR	STAINLESS STEEL
M48	CLO1-0475	LOCKING HANDLE	DIE CAST ZINC ALLOY
M50	CLO2-2045-XXX	SNAP ON COVER	COPOLYMER / DIE CAST ZINC ALLOY
M51	CLO2-1020-XXX CLO2-1021-XXX	SNAP ON HANDLE	DIE CAST ALUMINUM
M52	CO01-4001 LOCKINGPOINT CLAMP WASHER	FOR LOCKING HANDLE (x2)	STAINLESS STEEL
M53	CLO2-2059-00B	STRIKER	ABS
M54	CLO2-2060-00B	LOCKING BAR GUIDE	ABS
M55	#8 x 3/4" PH	STRIKER (x2) LOCKING BAR GUIDE (x2) OPERATOR (x6)	STAINLESS STEEL
M56	#8-32 x 1/2" PH	MULTIPOINT CLAMP WASHER (x1)	STAINLESS STEEL
M58	#12 x 1/2" PH	FOR STRAP ANCHOR	STAINLESS STEEL

**MCY ENGINEERING, INC.**  
GLAZING CONSULTANTS  
12781 MIRAMAR PKWY, STE. 301  
MIRAMAR, FL 33027 P: 305.271.0117  
www.MCYEngineering.com mcy@mcyengineering.com



**ES-P300 CASEMENT WINDOW - NON IMPACT**  
**E.S.WINDOWS, INC.**  
10653 NE QUAYBRIDGE CT.  
MIAMI, FL 33138  
TEL.(305) 624-7775

FLORIDA APPROVAL:  
**FL#40521.2**



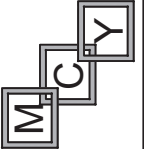
Rev. No.	Date	Drawn By	Description
R2	09.21.2023	JAMES	UPDATE TO FBC 2023

Drawn Date	Scale
09.21.2023	
DRAWING NO.	
AD21-52	
BOM	
Sheet No.	
19 OF 20	

# MATERIAL LISTE

CODE	PART	DESCRIPTION	MATERIAL
E1	ES-P300-531	FRAME FOR LEVER HANDLE WITH FLANGE	ALUMINUM 6063-T6
E2	ES-P300-532	FRAME FOR ROTO-OPERADOR WITH FLANGE	ALUMINUM 6063-T6
E3	ES-5020	SCREEN HOLDER	ALUMINUM 6063-T5
E4	ES-P300-504	FRAME FOR VENT	ALUMINUM 6063-T6
E5	ES-P300-505	FRAME FOR VENT (SCREEN)	ALUMINUM 6063-T6
E7	ES-P300-507	SASH	ALUMINUM 6063-T6
E8	ES-P300-508	SASH (SCREEN)	ALUMINUM 6063-T6
E9	ES-P300-002	SETTING CHAIR	ALUMINUM 6063-T6
E13	ES-P300-014	NON IMPACT GLASS STOP	ALUMINUM 6063-T5
E19	ES-P251-018	CORNER JOINT	ALUMINUM 6063-T6
E24	ES-P300-523	RECEPTOR HEAD/JAMB	ALUMINUM 6063-T6
E25	ES-P300-524	RECEPTOR SILL	ALUMINUM 6063-T6
E26	ES-P300-021	RECEPTOR STOP	ALUMINUM 6063-T6
E31	ES-CF-001	END DAM	ALUMINUM 6063-T5
E33	ES-P300-006	STRAP ANCHOR	ALUMINUM 6063-T5
E34	ES-P300-007	STRAP ANCHOR COVER	ALUMINUM 6063-T5

**MCY ENGINEERING, INC.**  
GLAZING CONSULTANTS

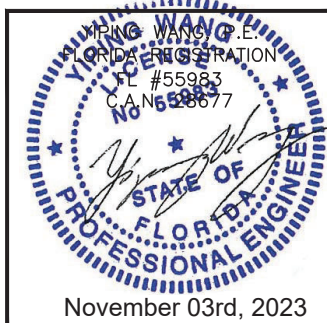


12781 MIRAMAR PKWY, STE. 301  
MIRAMAR, FL 33027 P: 305.271.0117  
www.MCYEngineering.com mcy@mcyengineering.com

ES-P300 CASEMENT WINDOW - NON IMPACT

E.S.WINDOWS, INC.  
10653 NE QUAYBRIDGE CT.  
MIAMI, FL 33138  
TEL: (305) 624-7775

FLORIDA APPROVAL:  
**FL#40521.2**



Rev. No.	Date	Drawn By	Description
R2	09.21.2023	JAMES	UPDATE TO FBC 2023

Drawn Date	Scale
09.21.2023	
DRAWING NO.	
AD21-52	
BOM	
Sheet No.	
20 OF 20	