

# ES.WINDOWS

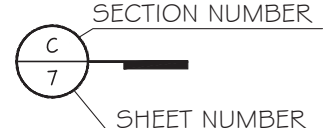
## ES-P300 AWNING WINDOW - L.M.I & S.M.I

**GENERAL NOTES:**

- THIS PRODUCT HAS BEEN DESIGNED AND TESTED TO COMPLY WITH THE REQUIREMENTS OF THE 7TH EDITION OF FLORIDA BUILDING CODE 2020/ 8TH EDITION OF FLORIDA BUILDING CODE 2023 INCLUDING HIGH VELOCITY HURRICANE ZONE (HVHZ).
- WINDOWS ARE RATED FOR LARGE AND SMALL MISSILE IMPACT. IMPACT SHUTTERS ARE NOT REQUIRED.
- THESE WINDOWS ARE APPROVED FOR AIR AND WATER INFILTRATION.
- ANCHORS SHALL BE AS LISTED, SPACED AS SHOWN ON DETAILS. ANCHORS EMBEDMENT TO BASE MATERIAL SHALL BE BEYOND WALL DRESSING OR STUCCO.
- ANCHORING OR LOADING CONDITIONS NOT SHOWN IN THESE DETAILS ARE NOT PART OF THIS APPROVAL.
- MATERIALS INCLUDING BUT NOT LIMITED TO STEEL/ METAL SCREWS THAT COME INTO CONTACT WITH OTHER DISSIMILAR MATERIALS SHALL MEET THE REQUIREMENTS OF THE 7TH EDITION OF FLORIDA BUILDING CODE 2020/ 8TH EDITION OF FLORIDA BUILDING CODE 2023 SECTION AS APPLICABLE.
- METAL STRUCTURES BY OTHERS TO BE DESIGNED TO SUPPORT THE LOADS IMPOSED BY THIS GLAZING SYSTEM AND TO TRANSFER SUCH LOADS TO THE BUILDING MAIN STRUCTURE.
- ULTIMATE LOAD OBTAINED FROM ASCE 7-16/ ASCE 7-22, MULTIPLY BY 0.6 SHALL BE LESS THAN OR EQUAL TO MAX. DESIGN LOAD IN THIS DOCUMENT. THE DESIGN LOADS SHOWN IN THIS DOCUMENT ARE ALLOWABLE DESIGN LOADS.
- MANUFACTURER'S LABEL SHALL BE LOCATED ON A READILY VISIBLE LOCATION IN ACCORDANCE WITH SECTION 1709.9.3 OF FLORIDA BUILDING CODE LABELING TO COMPLY WITH SECTION 1709.9.2.
- SEALANT:  
ALL FRAME CORNERS, JOINTS, MULLION SEAMS AND PERIMETER GLAZING BEAD TO FRAME INSTALLATION FASTENERS SEALED WITH SILICONE SEALANT.

USE CHARTS AS FOLLOWS.

- STEP 1: DETERMINE DESIGN WIND LOAD REQUIREMENTS BASED ON WIND VELOCITY, BLDG. HEIGHT, WIND ZONE USING APPLICABLE ASCE 7-16/ ASCE 7-22 STANDARD OR WIND TUNNEL REPORTS.
- STEP 2: SEE SHEET E1 FOR APPROVED TYPICAL ELEVATION & CONFIGURATION.
- STEP 3: ANCHOR OPTION SEE SHEET A1 TO A3. ANCHOR SPACING SEE SHEET E1.
- STEP 4: THE LOWEST VALUE RESULTING FROM STEPS 2 & 3 THAT EXCEED THE DESIGN WIND PRESSURES DETERMINED THRU STEP 1 SHALL APPLY TO ENTIRE SYSTEM.

ABBREVIATIONS AND SYMBOLS	
G.B. - GLASS BITE	
D.L.O. - DAYLITE OPENING	
F.H. - FRAME HEIGHT	
F.W. - FRAME WIDTH	
W/ - WITH	
W/O - WITHOUT	
O.C. - ON CENTER	

**LIMITATIONS OF USE**

A- THIS PRODUCT EVALUATION DOCUMENT (P.E.D.) PREPARED BY THIS ENGINEER IS GENERIC AND DOES NOT PROVIDE INFORMATION FOR A SITE SPECIFIC PROJECT; I.E. WHERE THE SITE CONDITIONS DEVIATE FROM THE P.E.D.


B- CONTRACTOR TO BE RESPONSIBLE FOR THE SELECTION, PURCHASE AND INSTALLATION OF THIS PRODUCT BASED ON THIS PRODUCT EVALUATION PROVIDED HE/SHE DOES NOT DEVIATE FROM THE CONDITIONS DETAILED ON THIS DOCUMENT.

C- THIS PRODUCT EVALUATION DOCUMENT WILL BE CONSIDERED INVALID IF ALTERED BY ANY MEANS.

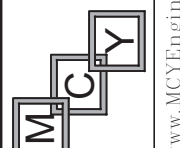
D- SITE SPECIFIC PROJECTS SHALL BE PREPARED BY A FLORIDA REGISTERED ENGINEER OR ARCHITECT WHICH WILL BECOME THE ENGINEER OF RECORD (E.O.R.) FOR THE PROJECT AND WHO WILL BE RESPONSIBLE FOR THE PROPER USE OF THE P.E.D.

E- THIS P.E.D. SHALL BEAR THE DATE AND ORIGINAL SEAL AND SIGNATURE OF THE PROFESSIONAL ENGINEER OF RECORD THAT PREPARED IT.

FLORIDA APPROVAL:  
**FL#40522.1**



November 15th, 2023

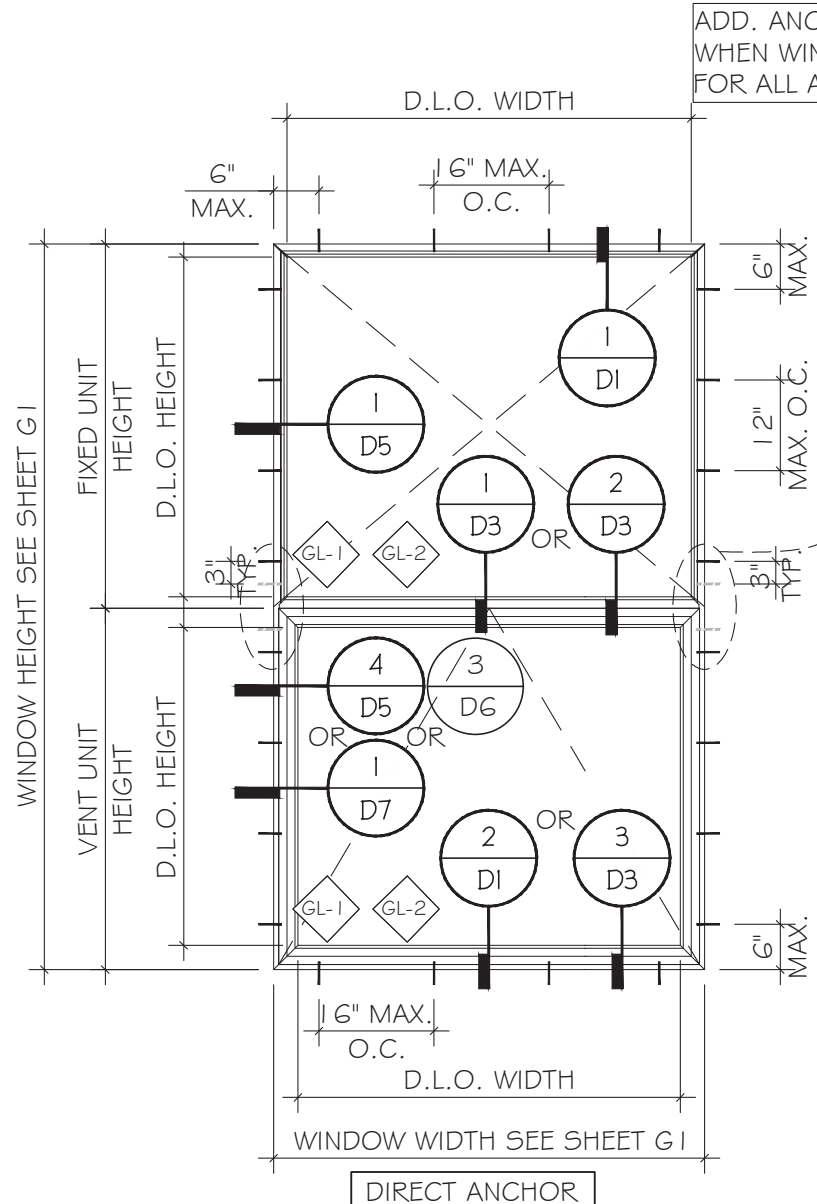


**MCY ENGINEERING, INC.**  
GLAZING CONSULTANTS  
12781 MIRAMAR PKWY, STE. 301  
MIRAMAR, FL 33027 P: 305.271.0117  
www.MCYEngineering.com mcy@mcyengineering.com

**ES-P300AWNING WINDOW - L.M.I & S.M.I**

**E.S.WINDOWS, INC.**  
10653 NE QUAYBRIDGE CT.  
MIAMI, FL 33138  
TEL. (305) 624-7775

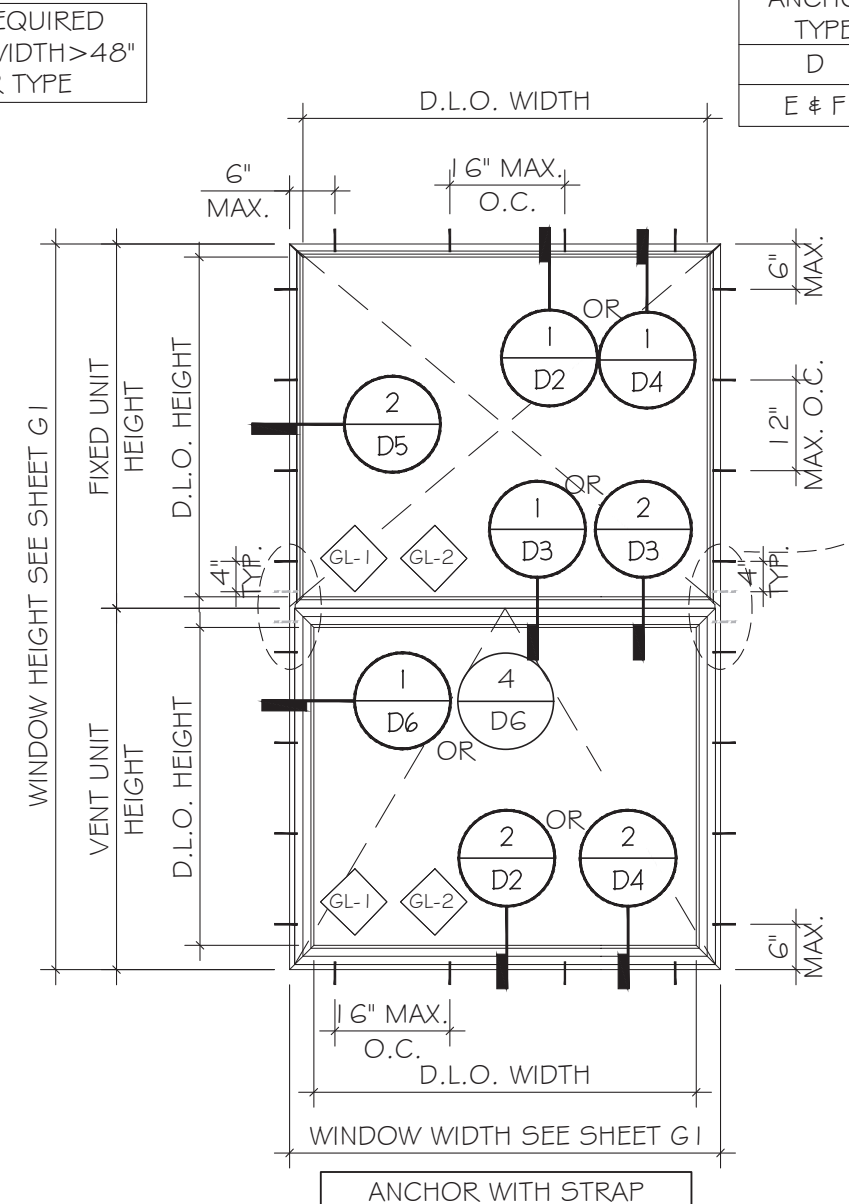
Rev. No.	Date	Drawn By	FBC UPDATE	Description																								
R2	11.16.2023	JAMES WANG																										
<table style="width: 100%;"> <tr> <td style="width: 20%;">Drawn Date</td> <td style="width: 20%;">11.16.2023</td> <td style="width: 20%;">Scale</td> <td></td> </tr> <tr> <td colspan="4" style="text-align: center;">DRAWING NO.</td> </tr> <tr> <td colspan="4" style="text-align: center;"><b>AD21-53</b></td> </tr> <tr> <td colspan="4" style="text-align: center;">COVER</td> </tr> <tr> <td colspan="4" style="text-align: center;">Sheet No.</td> </tr> <tr> <td colspan="4" style="text-align: center;"><b>1 OF 16</b></td> </tr> </table>					Drawn Date	11.16.2023	Scale		DRAWING NO.				<b>AD21-53</b>				COVER				Sheet No.				<b>1 OF 16</b>			
Drawn Date	11.16.2023	Scale																										
DRAWING NO.																												
<b>AD21-53</b>																												
COVER																												
Sheet No.																												
<b>1 OF 16</b>																												



DIRECT ANCHOR

TYPICAL WINDOW ELEVATIONS

MAX. D.L.O. AREA FOR FIXED UNIT = 16.9 SQ.FT.  
 MAX. D.L.O. AREA FOR VENT UNIT = 14.80 SQ.FT.

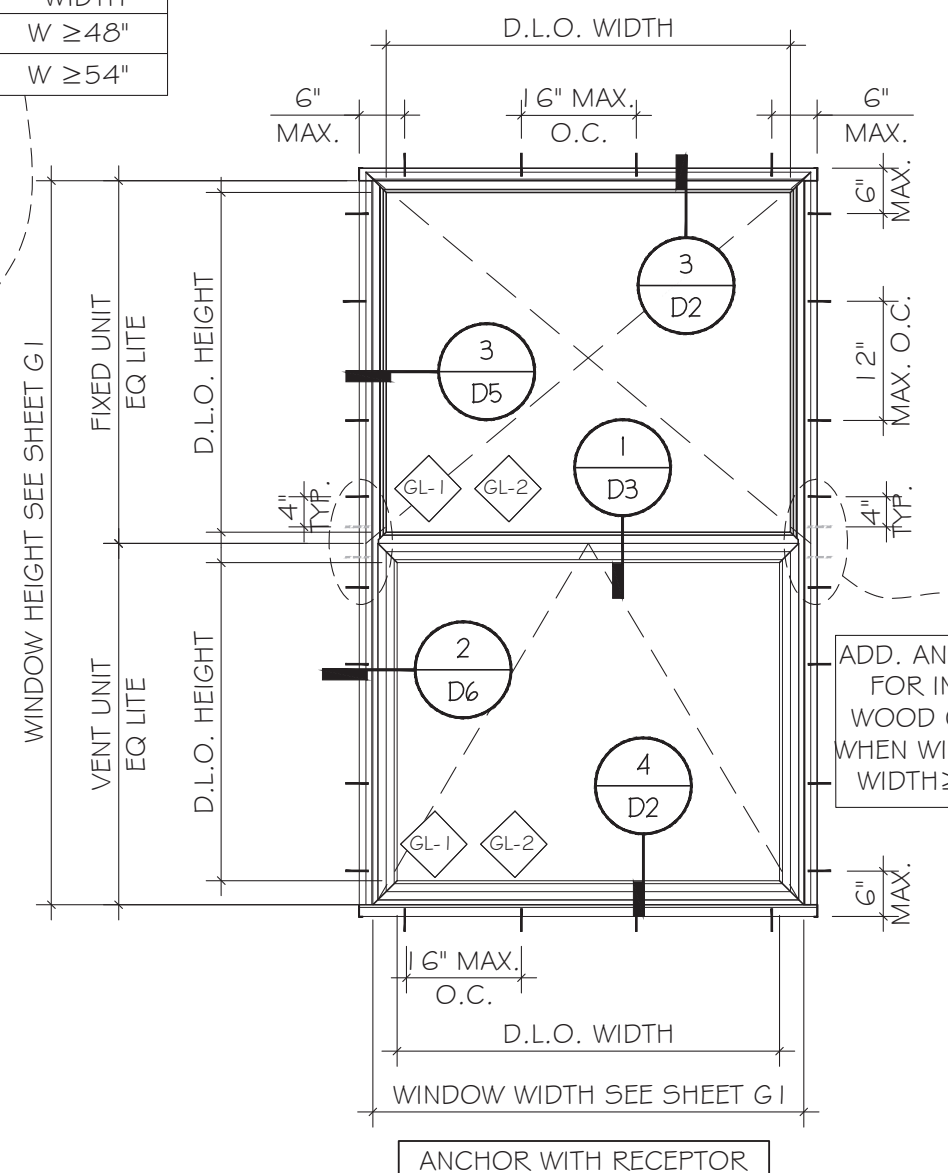


ANCHOR WITH STRAP

TYPICAL WINDOW ELEVATIONS

MAX. D.L.O. AREA FOR FIXED UNIT = 16.9 SQ.FT.  
 MAX. D.L.O. AREA FOR VENT UNIT = 14.80 SQ.FT.

ADD. ANCHOR REQUIRED	
ANCHOR TYPE	WINDOW WIDTH
D	W ≥ 48"
E & F	W ≥ 54"

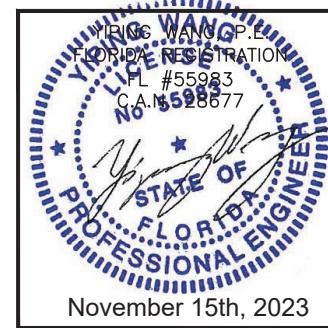


ANCHOR WITH RECEPTOR

TYPICAL WINDOW ELEVATIONS

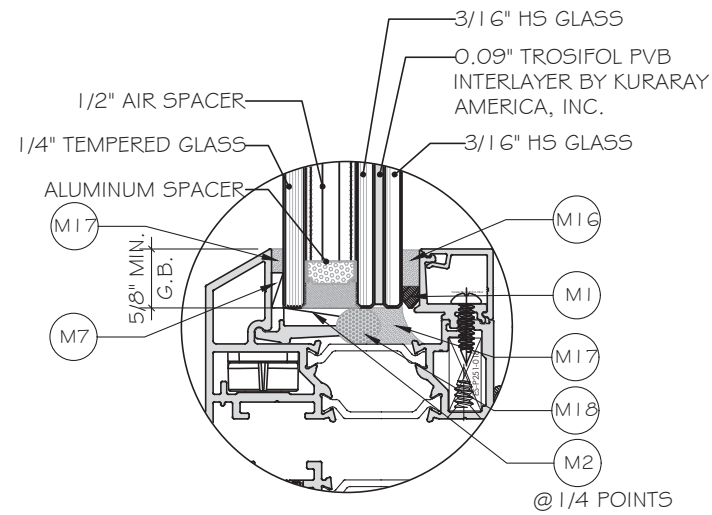
MAX. D.L.O. AREA FOR FIXED UNIT = 16.9 SQ.FT.  
 MAX. D.L.O. AREA FOR VENT UNIT = 14.80 SQ.FT.

FLORIDA APPROVAL:  
 FL#40522.1

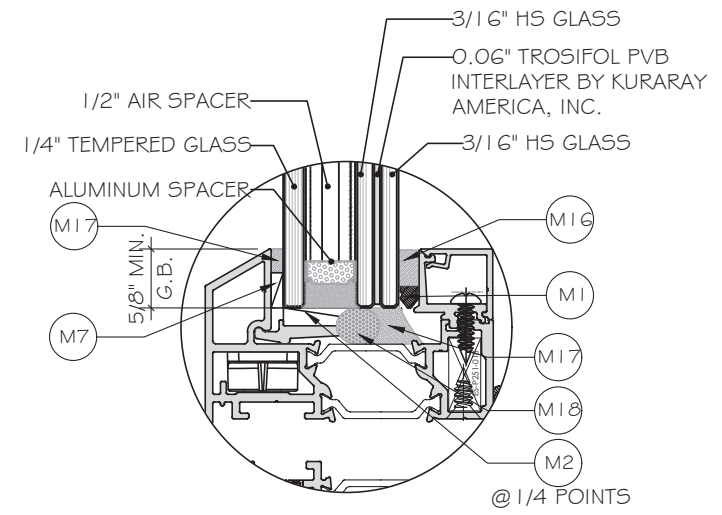


Rev. No.	Date	Drawn By	FBC UPDATE	Description
R2	11.16.2023	JAMES		
Drawn Date		Scale		
DRAWING NO.				
AD21-53				
E1				
Sheet No.				
2 OF 16				

AWNING WINDOW ALLOWABLE PRESSURE			
WINDOW HEIGHT	WINDOW WIDTH	ALLOWABLE LOAD	
		PSF EXT (+)	PSF INT (-)
72.0	24.0	80.0	90.0
	30.0		
	36.0		
	42.0		
	48.0		
	54.0		
78.0	24.0	80.0	90.0
	30.0		
	36.0		
	42.0		
	48.0		
	54.0		
84.0	24.0	80.0	90.0
	30.0		
	36.0		
	42.0		
	48.0		
	54.0		
90.0	24.0	80.0	90.0
	30.0		
	36.0		
	42.0		
	48.0		
	54.0		
96.0	24.0	80.0	90.0
	30.0		
	36.0		
	42.0		
	48.0		
	57.0		

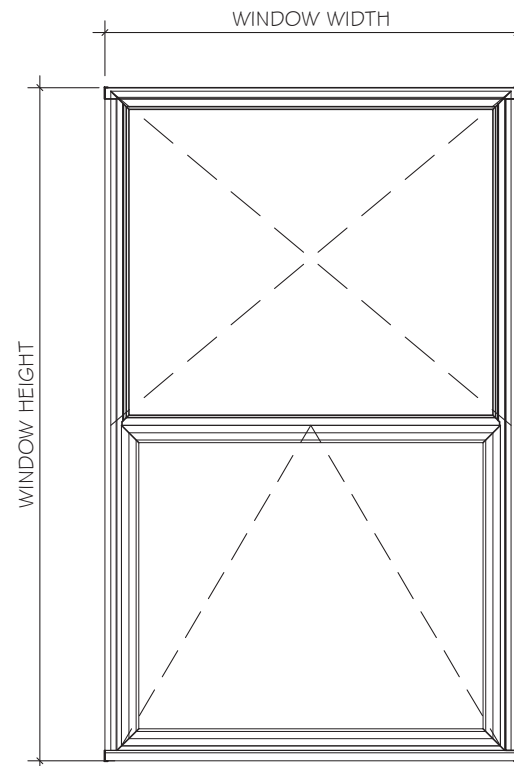


GLASS TYPE "GL-1" FOR LMI  
 1 3/16" INSULATED LAMINATED GLASS  
 LAMINATED ON INTERIOR SIDE

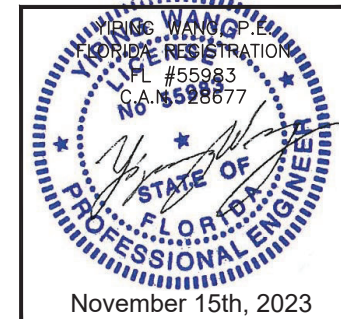


GLASS TYPE "GL-2" FOR 5MI  
 1 3/16" INSULATED LAMINATED GLASS  
 LAMINATED ON INTERIOR SIDE

NOTE:  
 GLASS COMPLIES WITH ASTM E1300-16  
 (3 SEC. GUSTS).



FLORIDA APPROVAL:  
 FL#40522.1



**MCY ENGINEERING, INC.**  
 GLAZING CONSULTANTS  
 12781 MIRAMAR PKWY, STE. 301  
 MIRAMAR, FL 33027 P: 305.271.0117  
 www.MCYEngineering.com mcy@mcyengineering.com

**ES-P300AWNING WINDOW - L.M.I & S.M.I**  
 E.S.WINDOWS, INC.  
 10653 NE QUAYBRIDGE CT.  
 MIAMI, FL 33138  
 TEL. (305) 624-7775

Rev. No.	Date	Drawn By	Description
R2	11.16.2023	JAMES	FBC UPDATE
Drawn Date	11.16.2023	Scale	
DRAWING NO. AD21-53			
G1			
Sheet No. 3 OF 16			

ANCHOR OPTIONS:

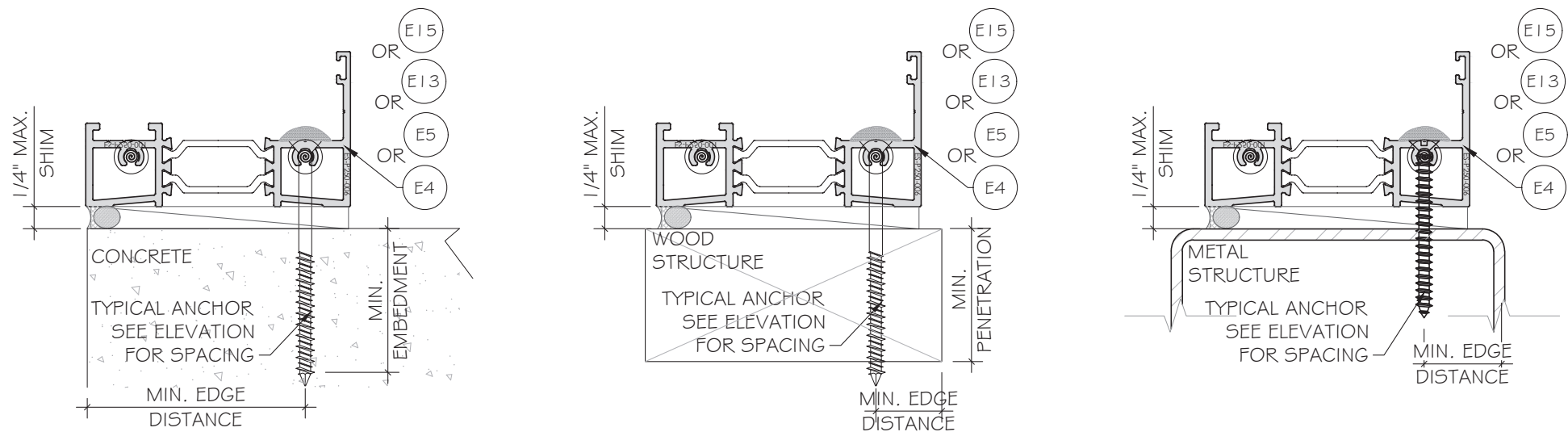
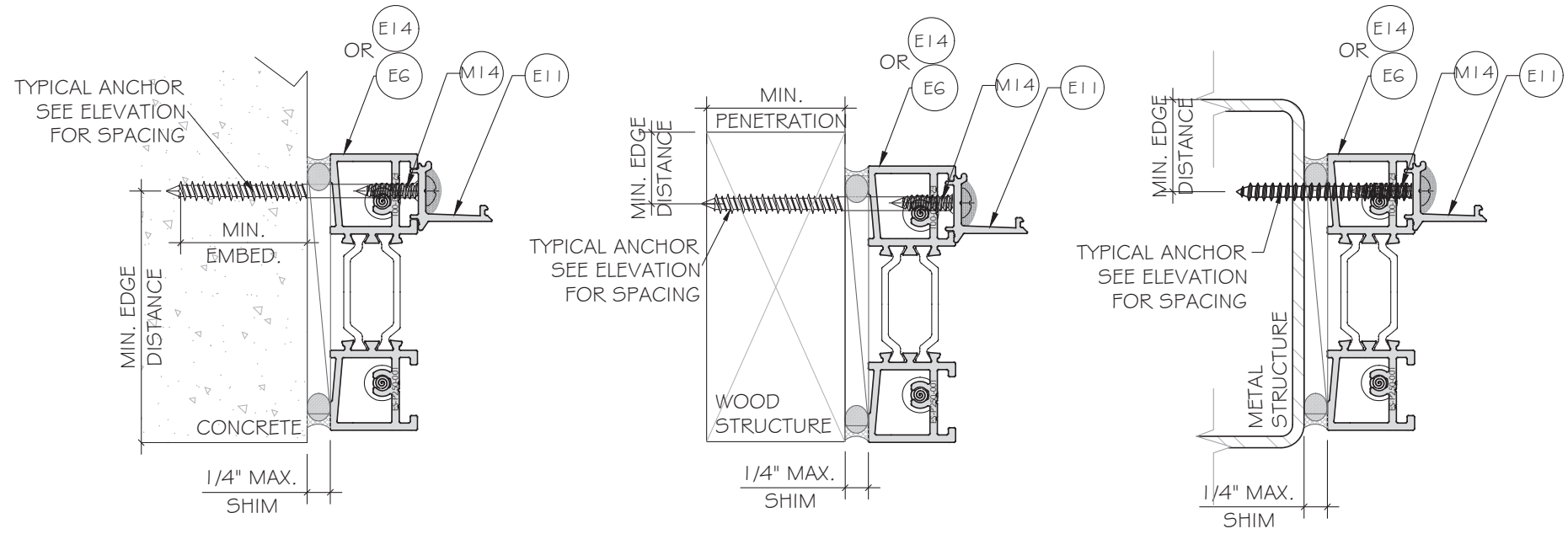
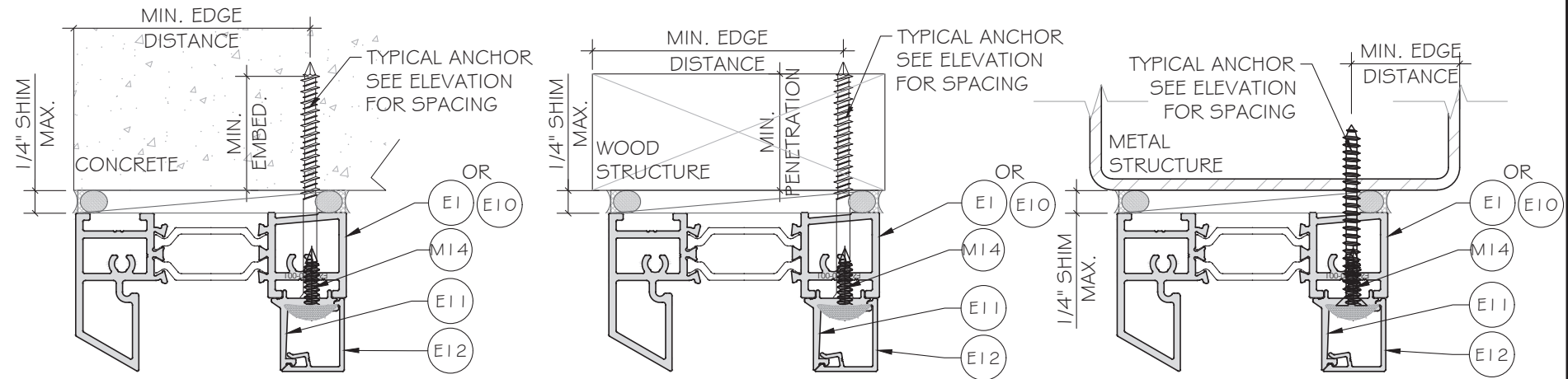
ANCHOR TYPE 'A' - 3/16" DIA. ULTRACON BY 'DEWALT'(Fu=164 KSI, Fy=117 KSI) INTO 2BY WOOD BUCKS (SG=0.55 MIN.) WITH 1 1/2" MIN. PENETRATION. OR THRU 1 BY WOOD BUCK INTO CONCRETE WITH MIN. 1 3/4" EMBEDMENT.

ANCHOR TYPE 'B' - 3/16" DIA. ULTRACON BY 'DEWALT'(Fu=164 KSI, Fy=117 KSI) DIRECTLY INTO CONCRETE f'c=3KSI MIN. W/1 3/4" MIN. EMBEDMENT

ANCHOR TYPE 'C' - #10 - SELF DRILLING SCREW GRADE 5 (Fu=120KSI, Fy=92KSI) INTO F.B.C. APPROVED MULLIONS OR INTO METAL STRUCTURES. (3) THREADS MIN. PENETRATION BEYOND METAL SUBSTRATE

ALUMINUM: 1/8" THK. MIN. (6063-T5, MIN)  
 STEEL: 1/8" THK. MIN. (Fy=36KSI MIN)  
 STEEL: 1/8" THK. STL STRUCTURE  
 (STEEL IN CONTACT WITH ALUMINUM TO BE PLATED OR PAINTED)

TYPICAL EDGE DISTANCE INTO CONCRETE = 2 1/2" MIN.  
 INTO WOOD = 1" MIN.  
 INTO METAL STRUCTURE = 1/2" MIN.



FLORIDA APPROVAL:  
**FL#40522.1**

YONG WANG  
 P.E.  
 FLORIDA REGISTRATION  
 #55983  
 CA#559877

November 15th, 2023

**MCY ENGINEERING, INC.**  
 GLAZING CONSULTANTS  
 12781 MIRAMAR PKWY, STE. 301  
 MIRAMAR, FL 33027  
 P: 305.271.0117  
 www.MCYEngineering.com mcy@mcyengineering.com

**ES-P300AWNING WINDOW - L.M.I & S.M.I**  
**E.S. WINDOWS, INC.**  
 10653 NE QUAYBRIDGE CT.  
 MIAMI, FL 33138  
 TEL. (305) 624-7775

Drawn Date	Scale
11.16.2023	
Drawn By	Description
JAMES	FBC UPDATE
Date	
Rev. No.	
R2	
DRAWING NO.	
AD21-53	
Sheet No.	
4 OF 16	



ANCHOR OPTIONS:

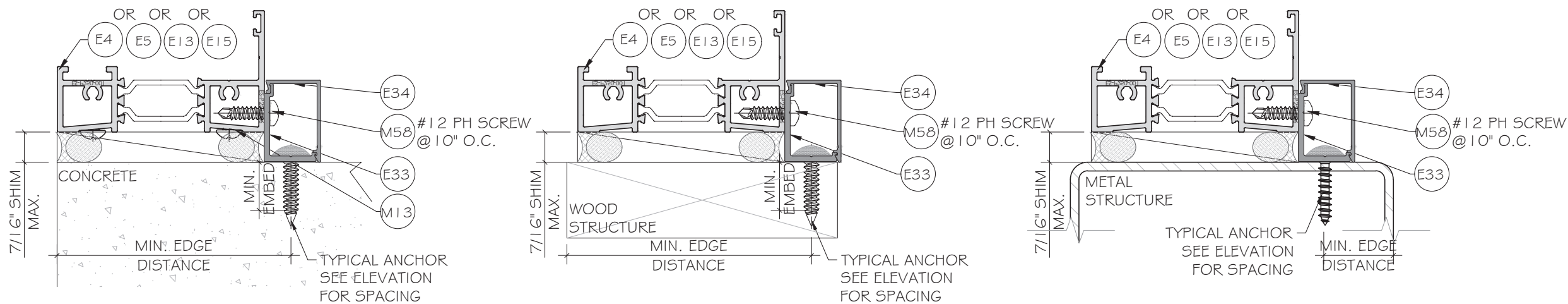
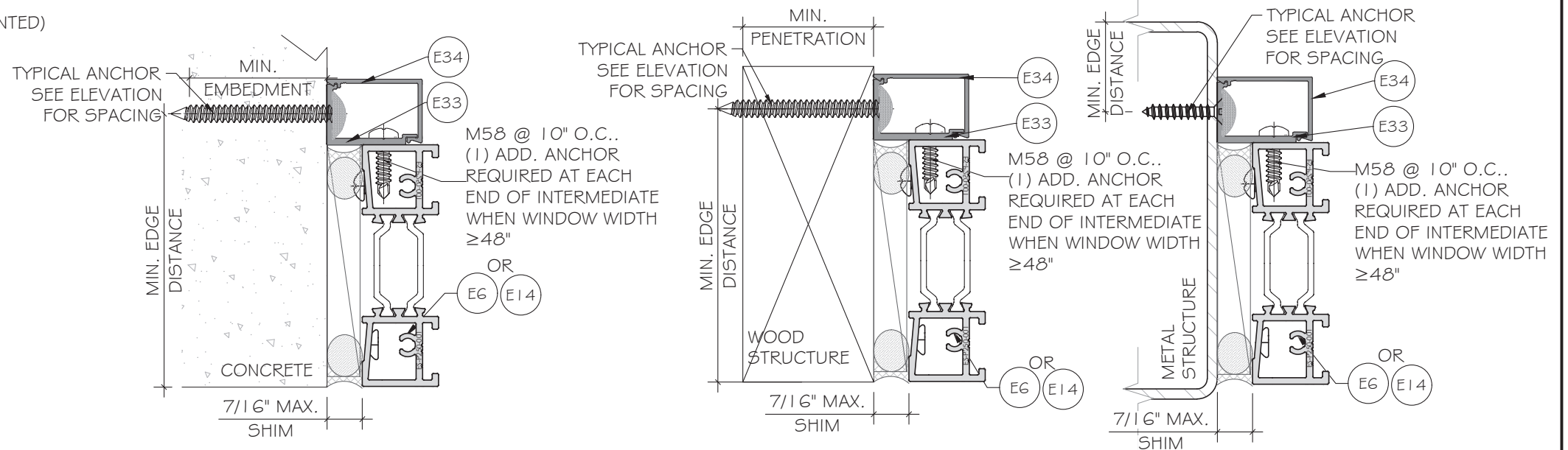
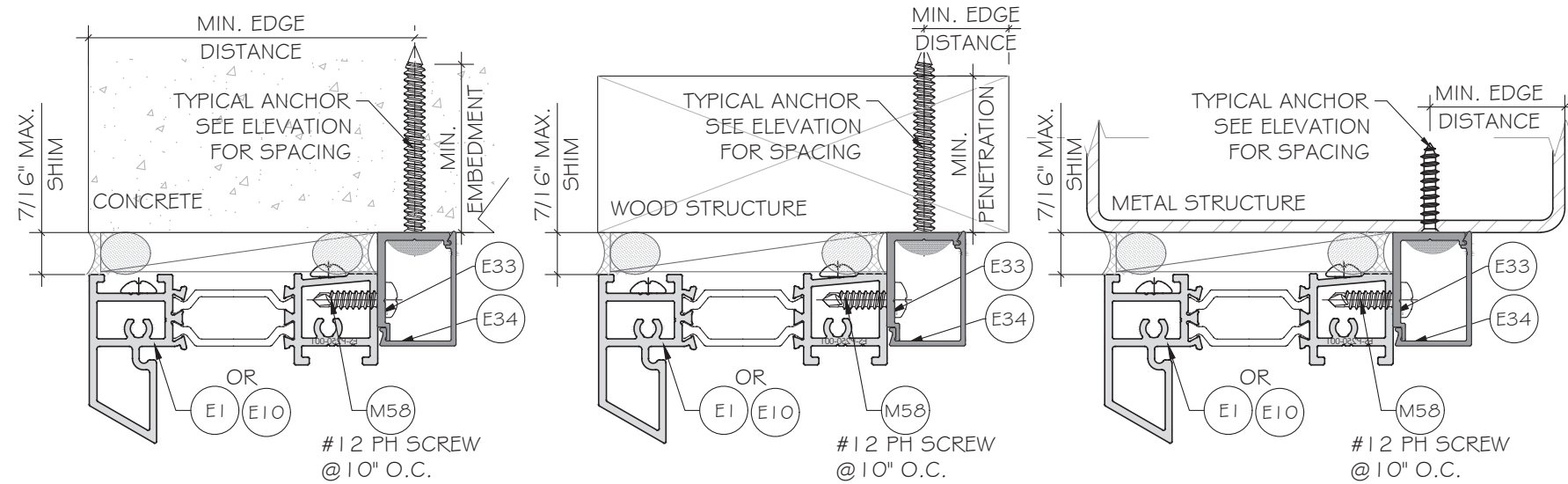
ANCHOR TYPE 'D' - 1/4" DIA. ULTRACON+ BY 'DEWALT'(Fu= 164KSI, Fy= 148KSI) INTO 2BY WOOD BUCKS (SG=0.55 MIN.) WITH 1 1/2" MIN. PENETRATION. OR THRU 1 BY WOOD BUCK INTO CONCRETE

ANCHOR TYPE 'E' - 1/4" DIA. ULTRACON+ BY 'DEWALT'(Fu= 164KSI, Fy= 148KSI) DIRECTLY INTO CONCRETE  $f_c=3KSI$  MIN. W/1 3/4" MIN. EMBEDMENT

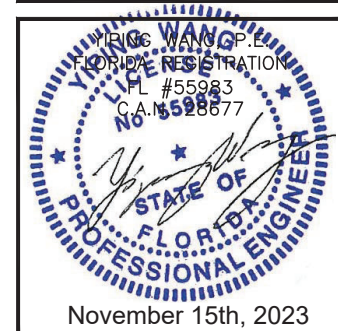
ANCHOR TYPE 'F' - 1/4" DIA. SEFL-DRILLING SCREWS, GRADE 5 (Fu= 120KSI, Fy=92KSI) INTO METAL STRUCTURES. (3) THREADS MIN. PENETRATION BEYOND METAL SUBSTRATE

ALUMINUM: 1/8" THK. MIN. (6063-T5, MIN)  
 STEEL: 1/8" THK. MIN. (Fy=36KSI MIN)  
 STEEL: 12GA STL STRUCTURE  
 (STEEL IN CONTACT WITH ALUMINUM TO BE PLATED OR PAINTED)

TYPICAL EDGE DISTANCE INTO CONCRETE = 2 1/2" MIN.  
 INTO WOOD = 1" MIN.  
 INTO METAL STRUCTURE = 1/2" MIN.



FLORIDA APPROVAL:  
**FL#40522.1**



**MCY ENGINEERING, INC.**  
 GLAZING CONSULTANTS  
 12781 MIRAMAR PKWY, STE. 301  
 MIRAMAR, FL 33027 P: 305.271.0117  
 www.MCYEngineering.com mcy@mcyengineering.com

**ES-P300AWNING WINDOW - L.M.I & S.M.I**  
**E.S. WINDOWS, INC.**  
 10653 NE QUAYBRIDGE CT.  
 MIAMI, FL 33138  
 TEL. (305) 624-7775

Drawn Date	Scale
11.16.2023	
Drawn By	Description
JAMES	
Rev. No.	Date
R2	11.16.2023
DRAWING NO.	
AD21-53	
Sheet No.	
5 OF 16	

ANCHOR OPTIONS:

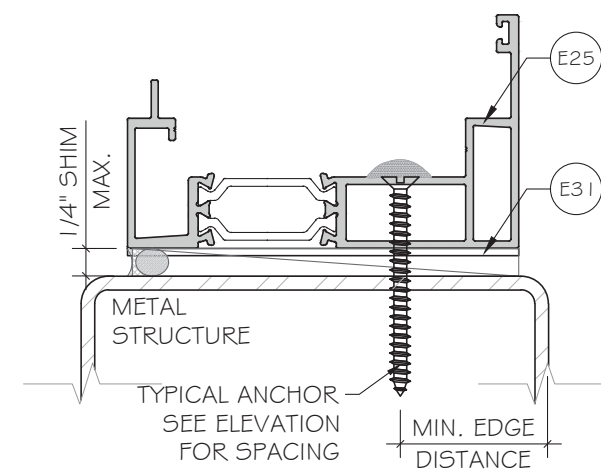
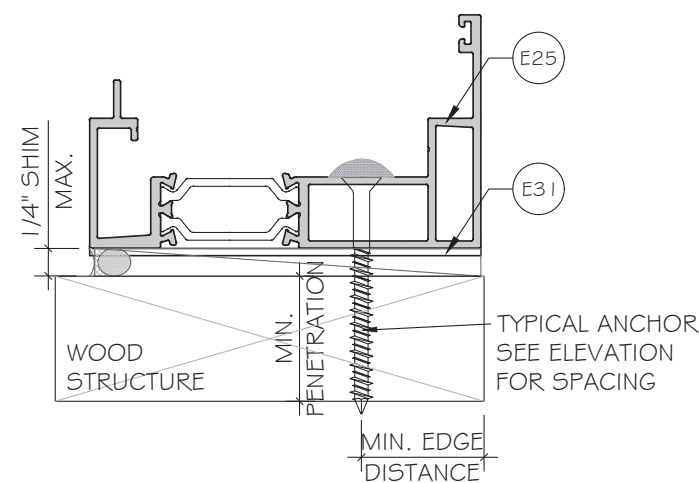
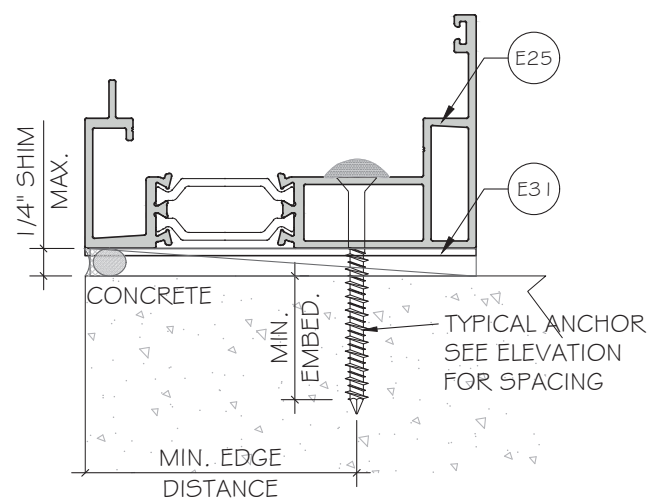
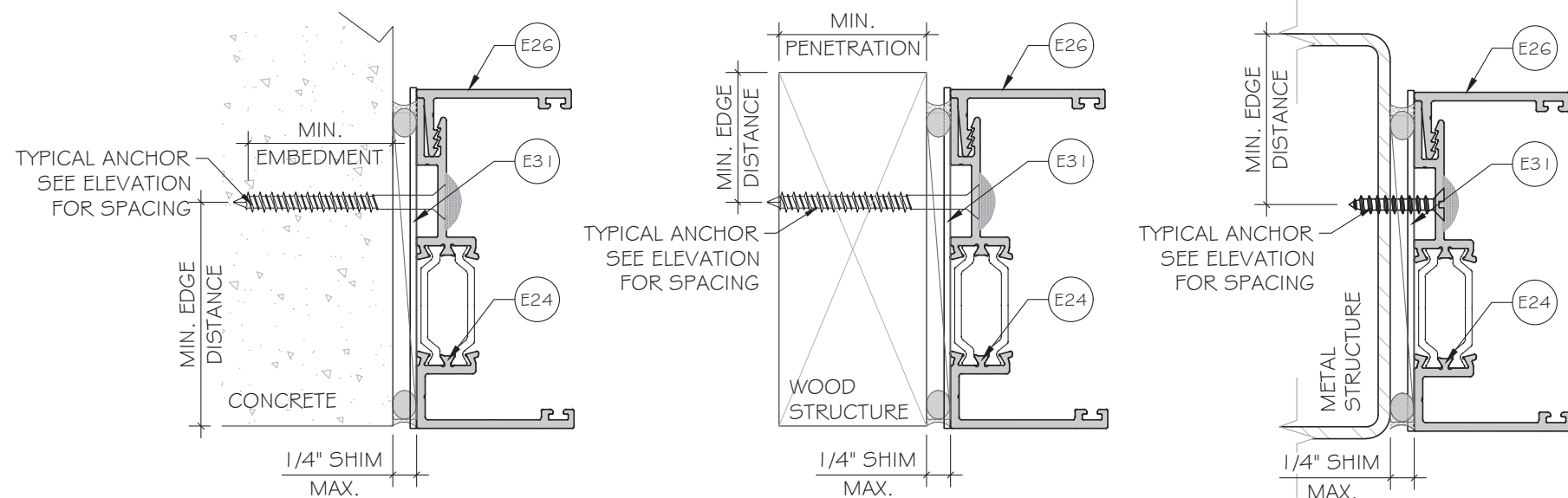
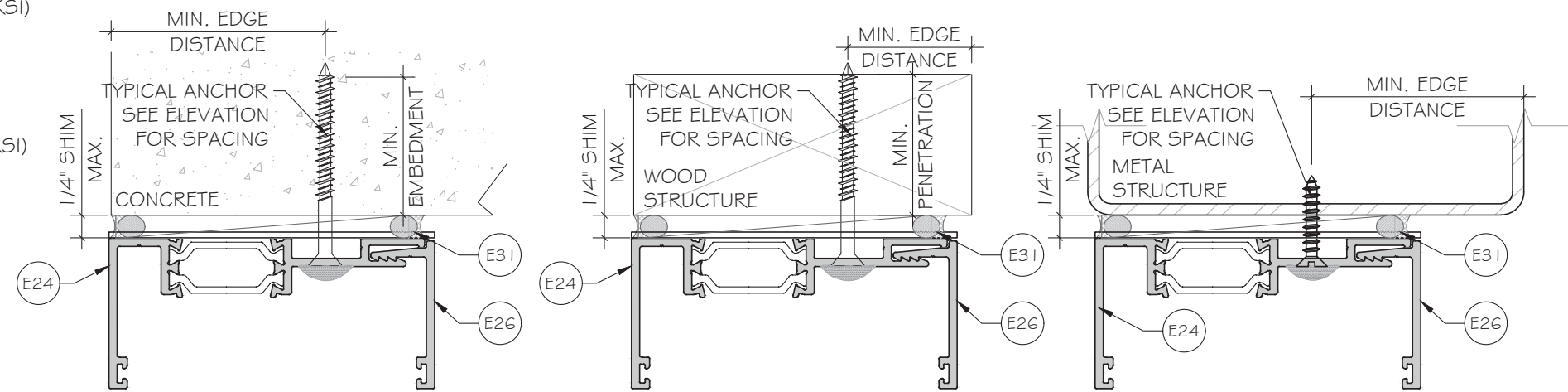
ANCHOR TYPE 'D' - 1/4" DIA. ULTRACON+ BY 'DEWALT'(Fu=164KSI, Fy=148KSI)  
 INTO 2BY WOOD BUCKS (SG=0.55 MIN.) WITH 1 1/2" MIN. PENETRATION.  
 OR THRU 1 BY WOOD BUCK INTO CONCRETE

ANCHOR TYPE 'E' - 1/4" DIA. ULTRACON+ BY 'DEWALT'(Fu=164KSI, Fy=148KSI)  
 DIRECTLY INTO CONCRETE Fc=3KSI MIN.  
 W/1 3/4" MIN. EMBEDMENT

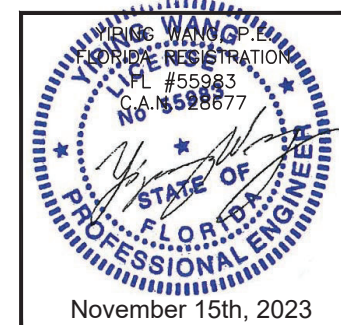
ANCHOR TYPE 'F' - 1/4" DIA. SEFL-DRILLING SCREWS, GRADE 5  
 (Fu=120KSI, Fy=92KSI)  
 INTO METAL STRUCTURES.  
 (3) THREADS MIN. PENETRATION BEYOND METAL SUBSTRATE

ALUMINUM: 1/8" THK. MIN. (G0G3-T5, MIN)  
 STEEL: 1/8" THK. MIN. (Fy=36KSI MIN)  
 STEEL: 12GA STL STRUCTURE  
 (STEEL IN CONTACT WITH ALUMINUM TO BE PLATED OR PAINTED)

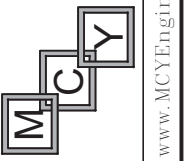
TYPICAL EDGE DISTANCE  
 INTO CONCRETE = 2 1/2" MIN.  
 INTO WOOD = 1" MIN.  
 INTO METAL STRUCTURE = 1/2" MIN.



FLORIDA APPROVAL:  
**FL#40522.1**

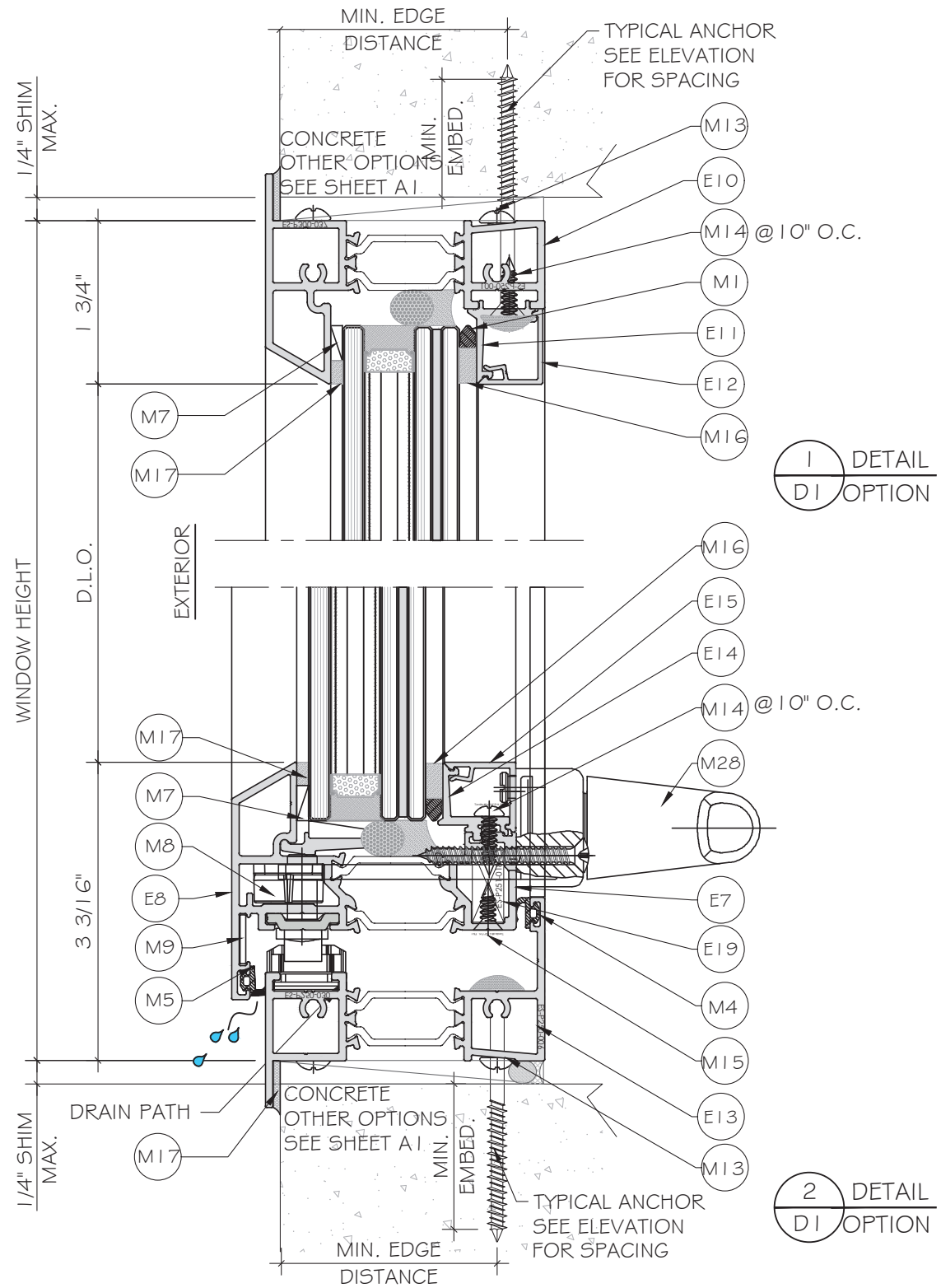
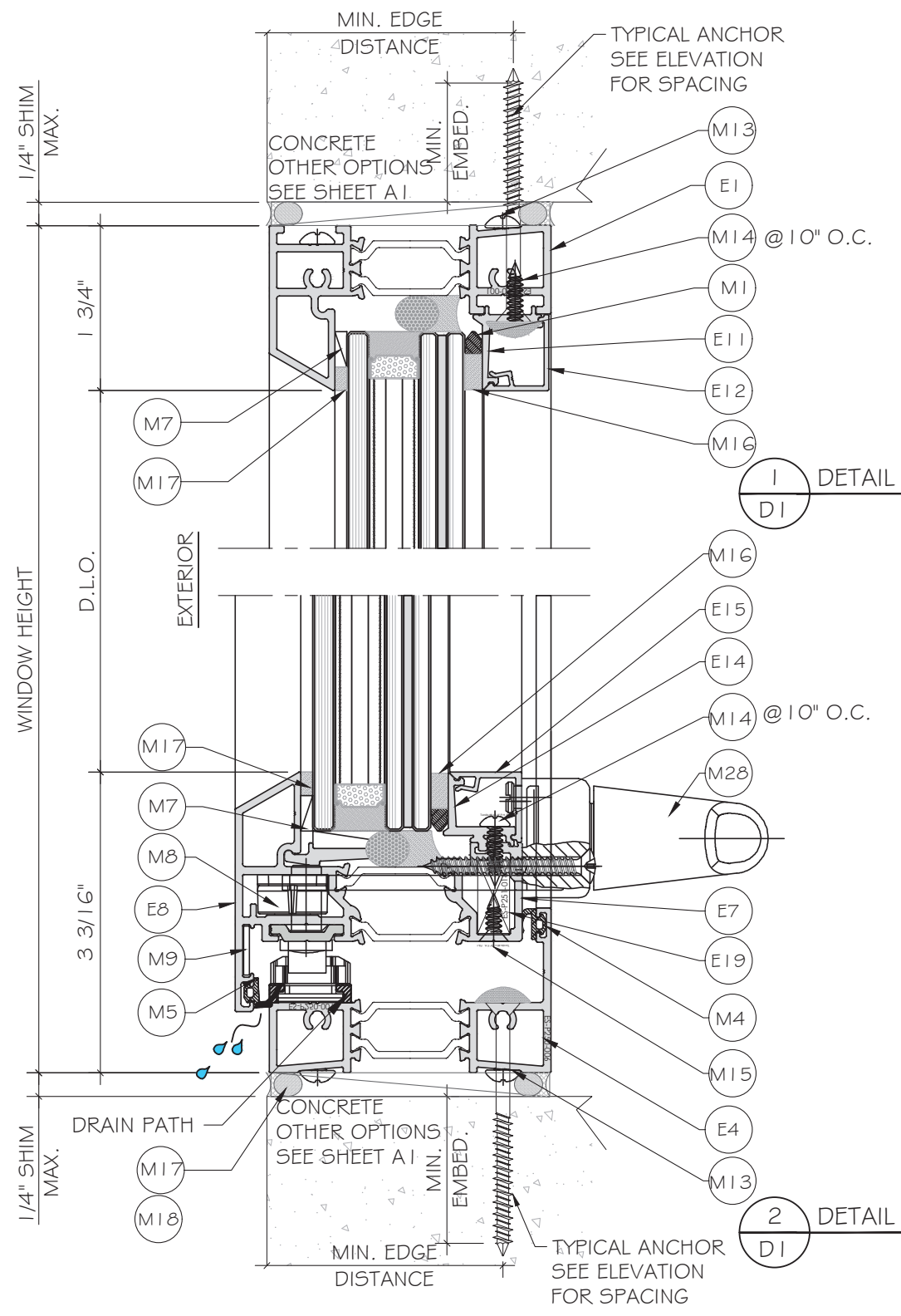


**MCY ENGINEERING, INC.**  
 GLAZING CONSULTANTS  
 12781 MIRAMAR PKWY, STE. 301  
 MIRAMAR, FL 33027 P: 305.271.0117  
 www.MCYEngineering.com mcy@mcyengineering.com

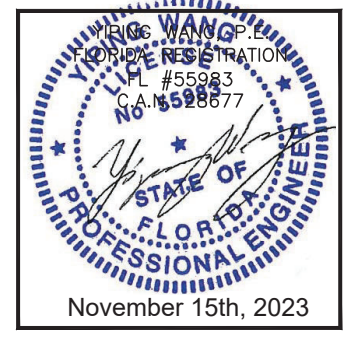


**ES-P300AWNING WINDOW - L.M.I. & S.M.I.**  
**E.S. WINDOWS, INC.**  
 10653 NE QUAYBRIDGE CT.  
 MIAMI, FL 33138  
 TEL. (305) 624-7775

Drawn Date	Scale
11.16.2023	
Drawn By	Description
JAMES	FBC UPDATE
Date	
11.16.2023	
Rev. No.	
R2	
DRAWING NO.	
AD21-53	
Sheet No.	
6 OF 16	



FLORIDA APPROVAL:  
FL#40522.1



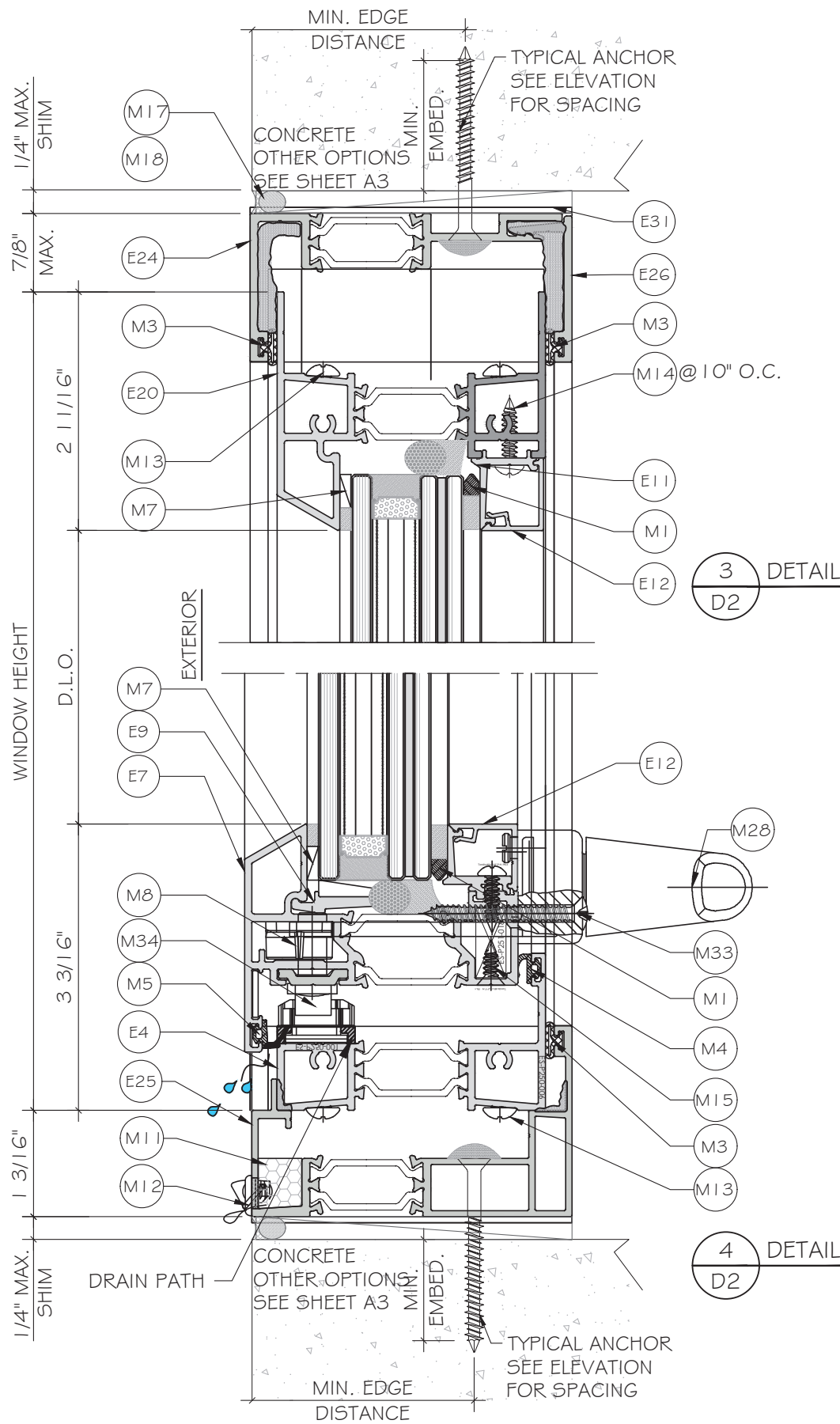
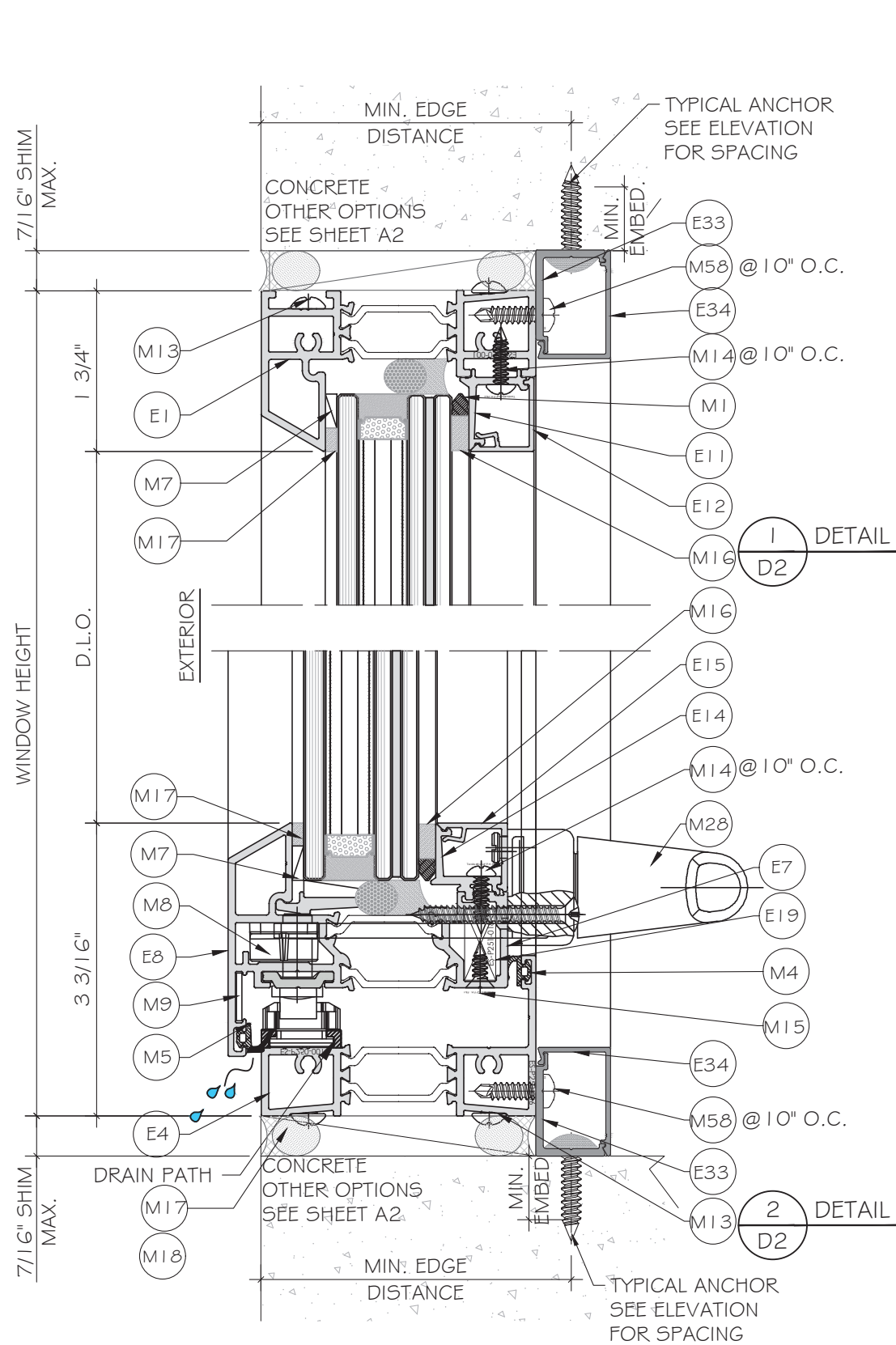
**MCY ENGINEERING, INC.**  
GLAZING CONSULTANTS  
12781 MIRAMAR PKWY, STE. 301  
MIRAMAR, FL 33027 P: 305.271.0117  
www.MCYEngineering.com mcy@mcyengineering.com

**ES-P300AWNING WINDOW - L.M.I. & S.M.I.**  
E.S. WINDOWS, INC.  
10653 NE QUAYBRIDGE CT.  
MIAMI, FL 33138  
TEL. (305) 624-7775

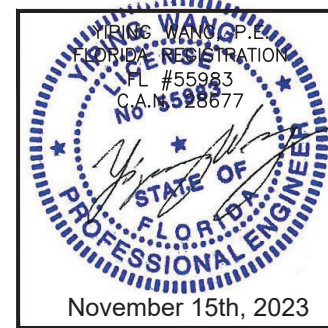
Rev. No.	Date	Drawn By	Description
R2	11.16.2023	JAMES	FBC UPDATE

Drawn Date: 11.16.2023  
Scale:  
DRAWING NO.: AD21-53  
Sheet No.: 7 OF 16





FLORIDA APPROVAL:  
**FL#40522.1**



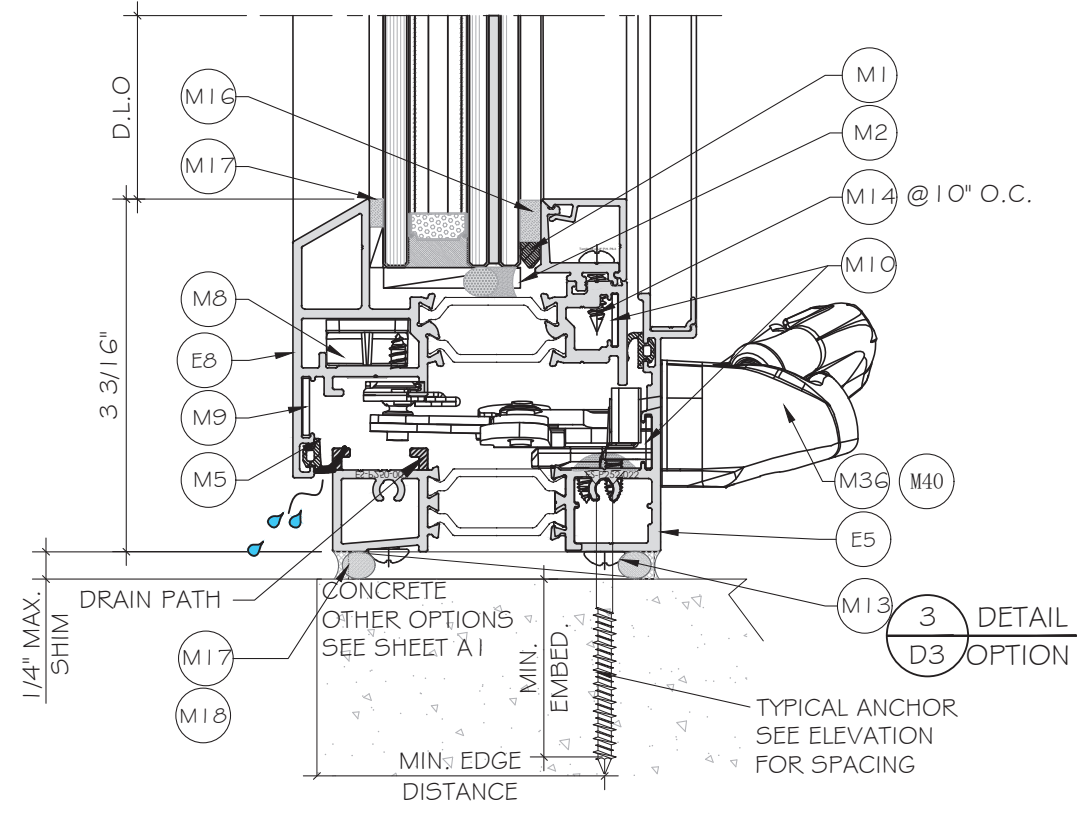
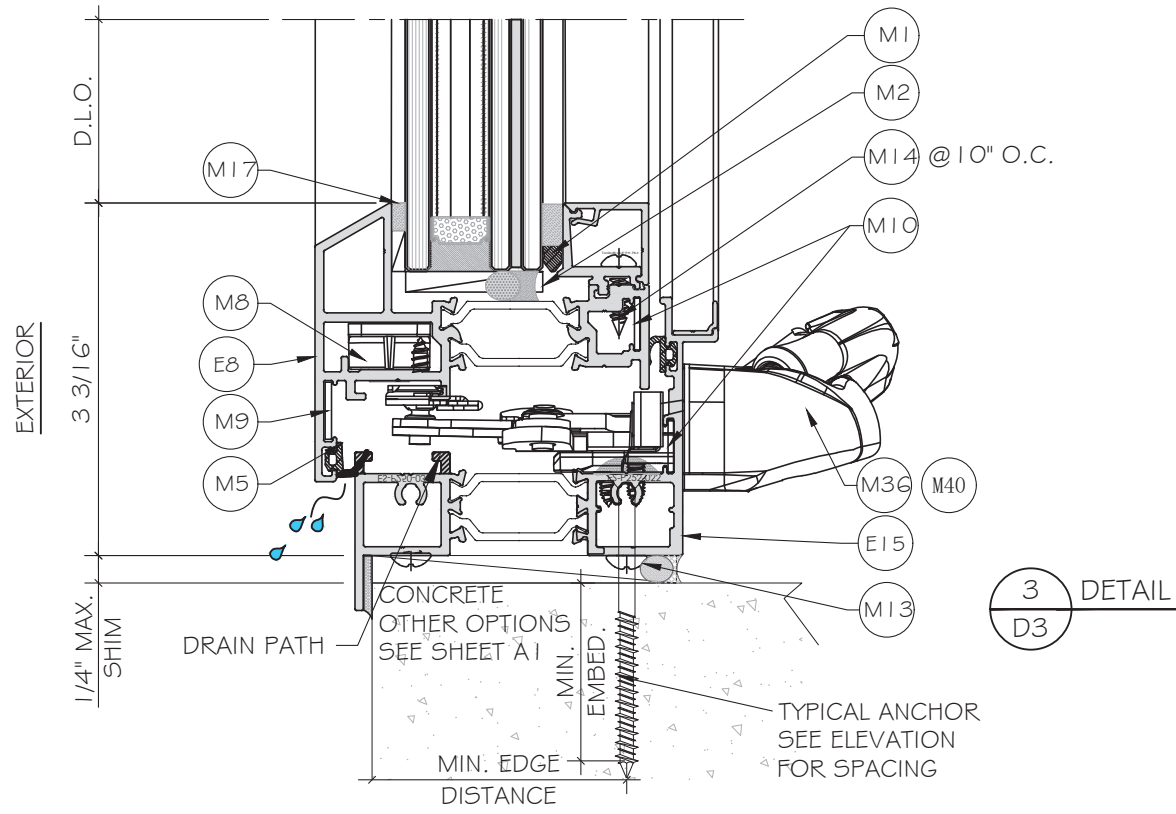
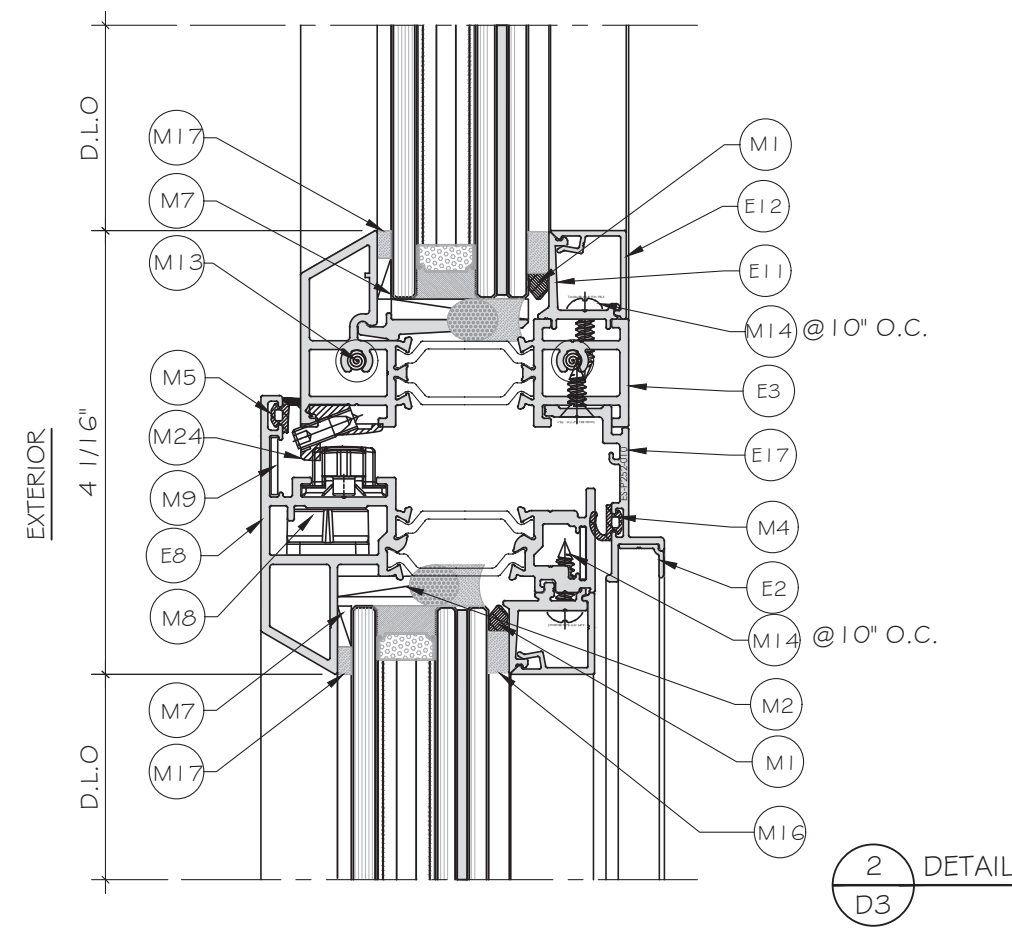
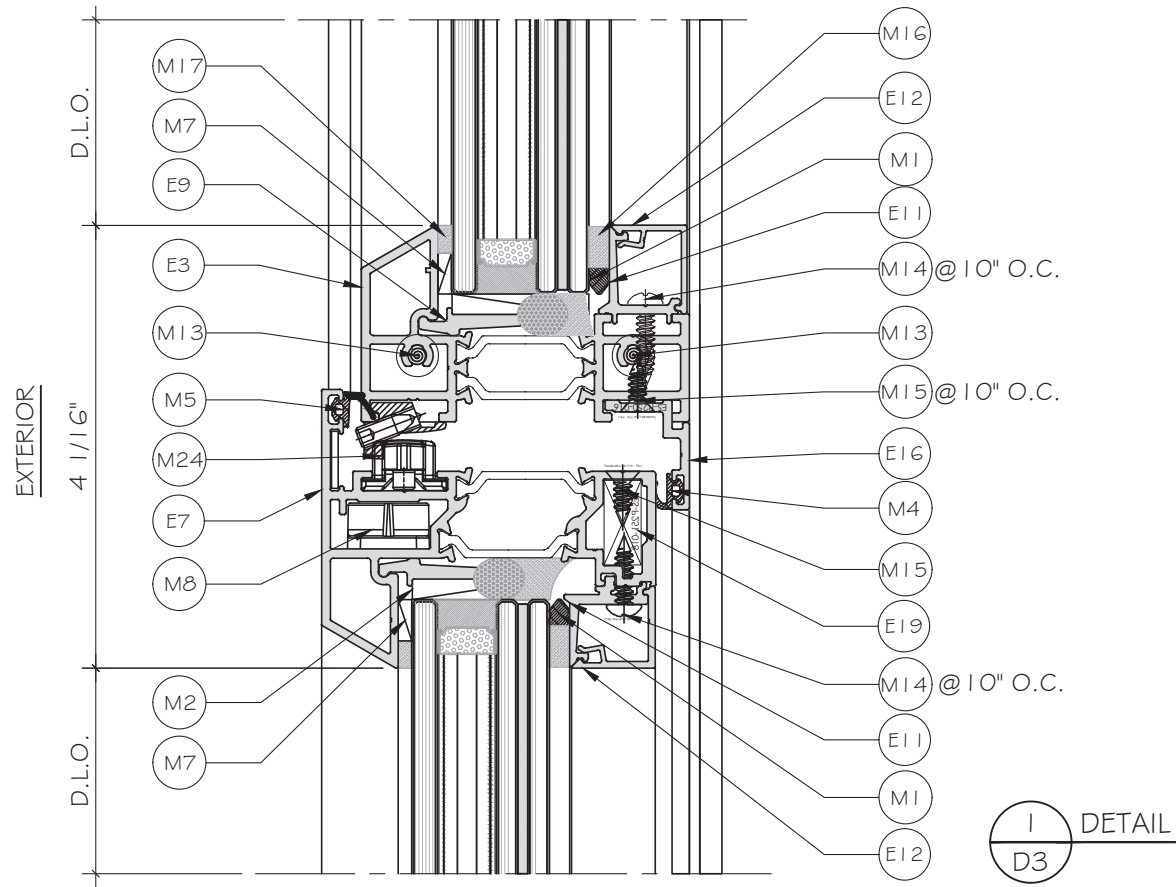
**MCY ENGINEERING, INC.**  
 GLAZING CONSULTANTS  
 12781 MIRAMAR PKWY, STE. 301  
 MIRAMAR, FL 33027 P: 305.271.0117  
 www.MCYEngineering.com mcy@mcyengineering.com

**ES-P300AWNING WINDOW - L.M.I & S.M.I**  
**E.S. WINDOWS, INC.**  
 10653 NE QUAYBRIDGE CT.  
 MIAMI, FL 33138  
 TEL. (305) 624-7775

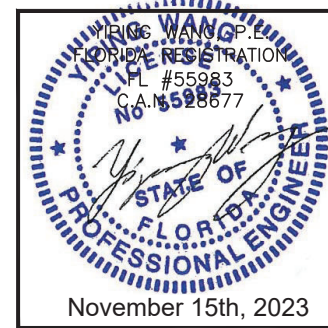
Rev. No.	Date	Drawn By	FBC UPDATE	Description
R2	11.16.2023	JAMES		

Drawn Date: 11.16.2023 Scale:  
 DRAWING NO. **AD21-53**  
 Sheet No. **D2**  
**8 OF 16**





FLORIDA APPROVAL:  
FL#40522.1



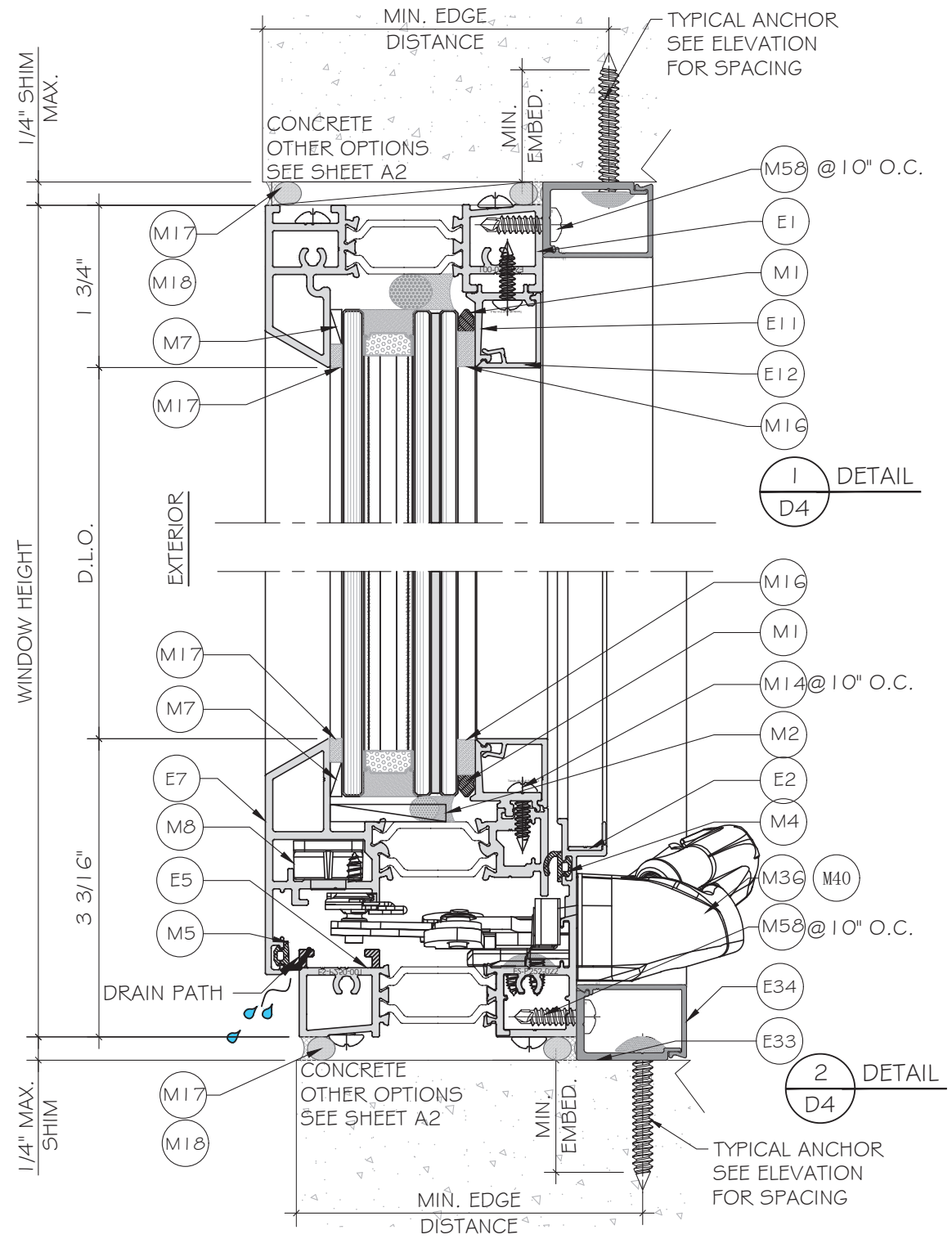
**MCY ENGINEERING, INC.**  
GLAZING CONSULTANTS  
12781 MIRAMAR PKWY, STE. 301  
MIRAMAR, FL 33027 P: 305.271.0117  
www.MCYEngineering.com mcy@mcyengineering.com

**ES-P300AWNING WINDOW - L.M.I & S.M.I**  
E.S. WINDOWS, INC.  
10653 NE QUAYBRIDGE CT.  
MIAMI, FL 33138  
TEL: (305) 624-7775

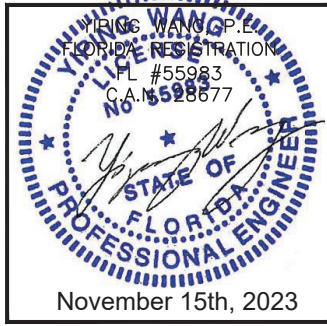
Rev. No.	Date	Drawn By	FBC UPDATE	Description
R2	11.16.2023	JAMES		

Drawn Date: 11.16.2023  
Scale:  
DRAWING NO.  
**AD21-53**

Sheet No.  
**D3**  
9 OF 16



FLORIDA APPROVAL:  
**FL#40522.1**

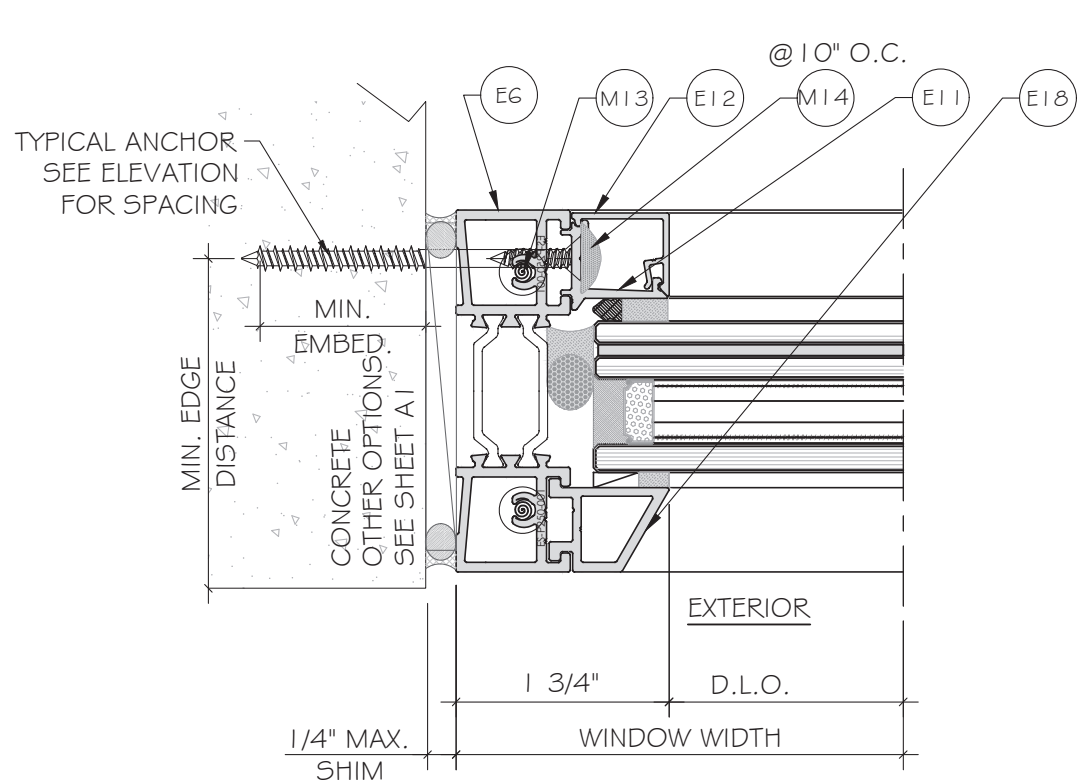


**ES-P300AWNING WINDOW - L.M.I & S.M.I**  
**E.S.WINDOWS, INC.**  
 10653 NE QUAYBRIDGE CT.  
 MIAMI, FL 33138  
 TEL. (305) 624-7775

**MCY ENGINEERING, INC.**  
 GLAZING CONSULTANTS  
 12781 MIRAMAR PKWY, STE. 301  
 MIRAMAR, FL 33027 P: 305.271.0117  
 www.MCYEngineering.com mcy@mcyengineering.com

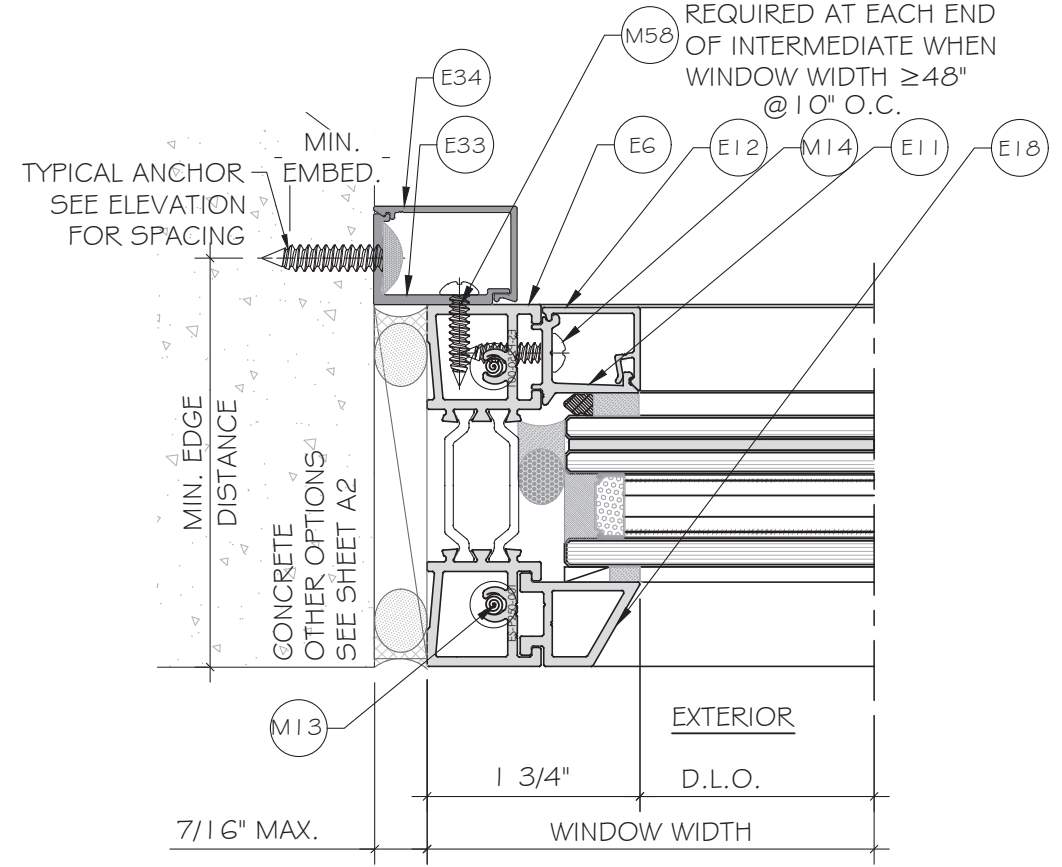
Rev. No.	Date	Drawn By	FBC UPDATE	Description
R2	11.16.2023	JAMES		

Drawn Date 11.16.2023	Scale
DRAWING NO. <b>AD21-53</b>	
Sheet No. <b>D4</b>	
<b>10 OF 16</b>	

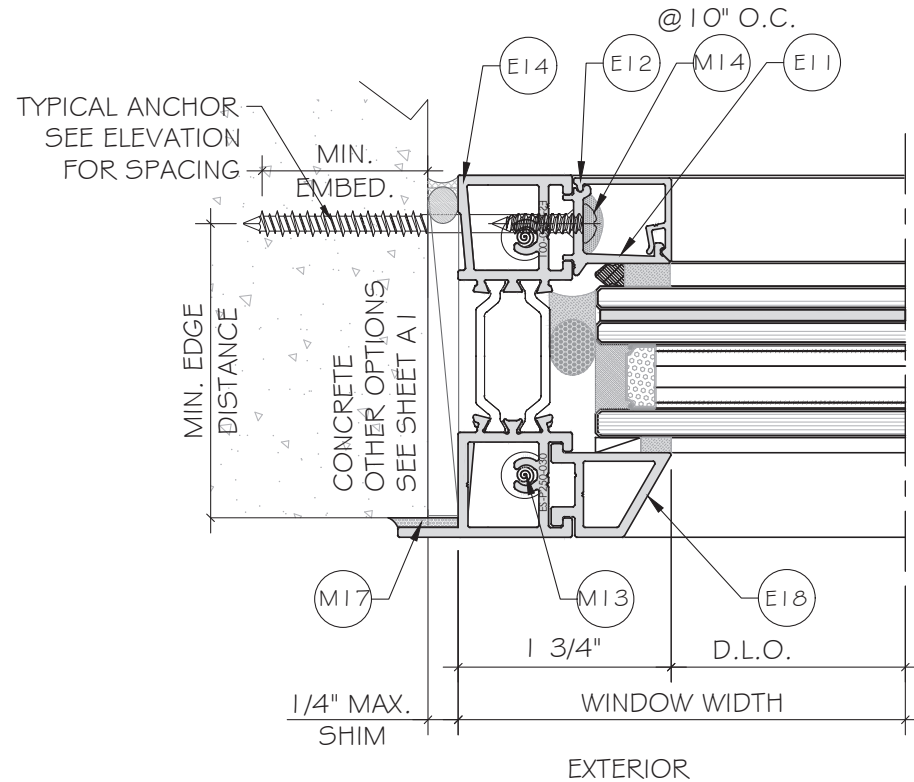


1  
D5  
DETAIL

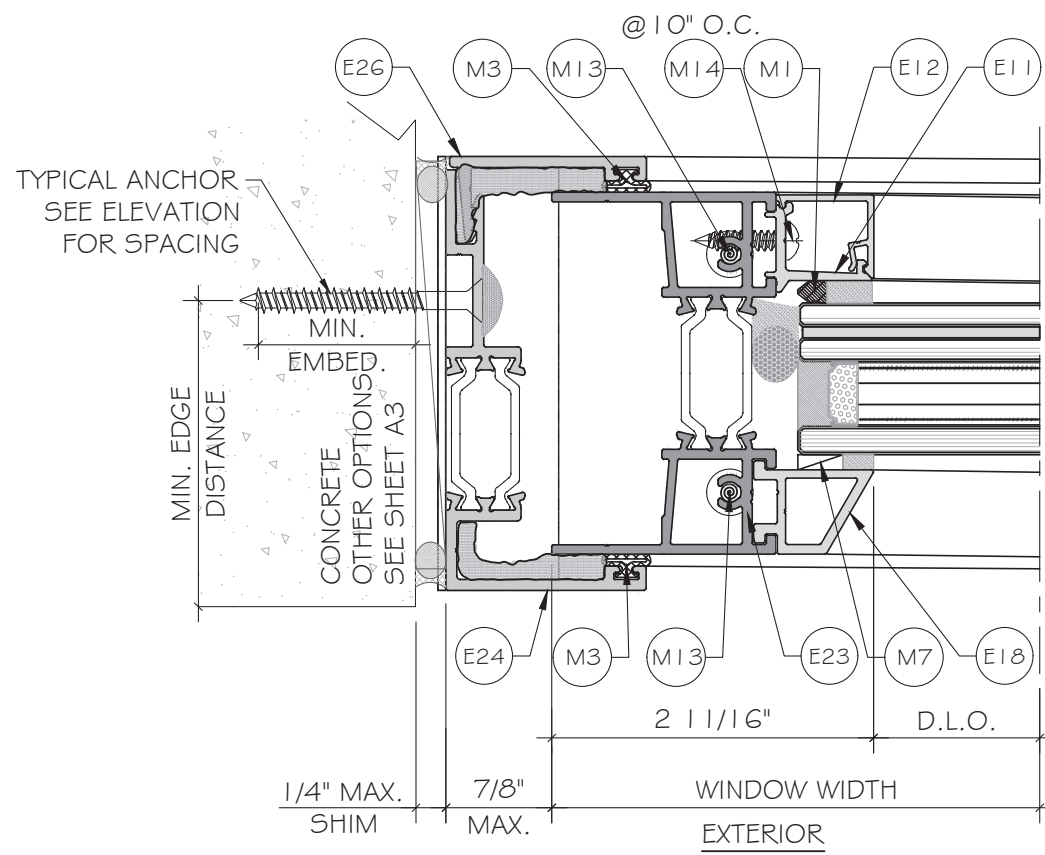
M58 @ 10" O.C..  
(1) ADD. ANCHOR  
REQUIRED AT EACH END  
OF INTERMEDIATE WHEN  
WINDOW WIDTH ≥ 48"  
@ 10" O.C.



2  
D5  
DETAIL

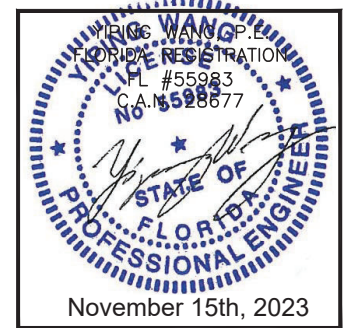


1  
D5  
DETAIL  
OPTION



3  
D5  
DETAIL

FLORIDA APPROVAL:  
FL#40522.1



**MCY ENGINEERING, INC.**  
GLAZING CONSULTANTS  
12781 MIRAMAR PKWY, STE. 301  
MIRAMAR, FL 33027 P: 305.271.0117  
www.MCYEngineering.com mcy@mcyengineering.com

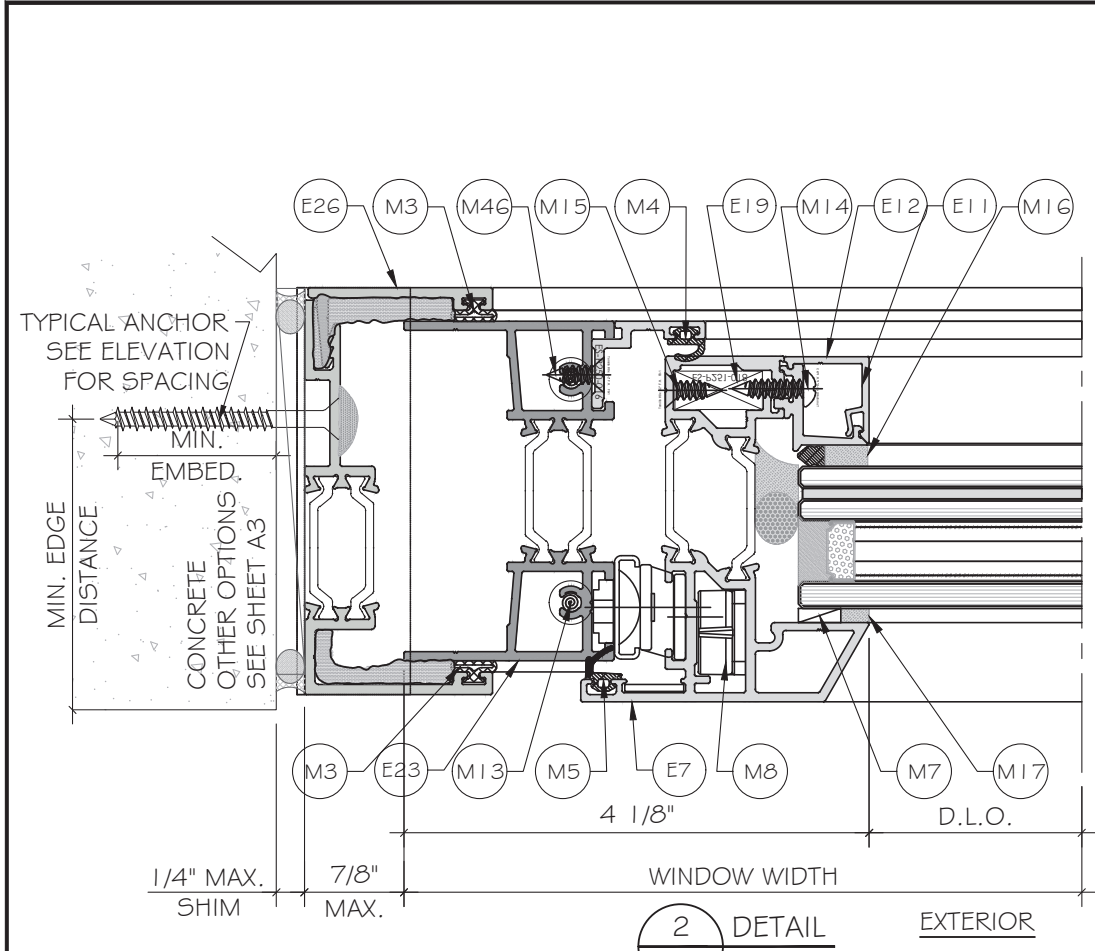
**ES-P300AWNING WINDOW - L.M.I. & S.M.I**  
**E.S. WINDOWS, INC.**  
10653 NE QUAYBRIDGE CT.  
MIAMI, FL 33138  
TEL: (305) 624-7775

Rev. No.	Date	Drawn By	Description
R2	11.16.2023	JAMES	FBC UPDATE

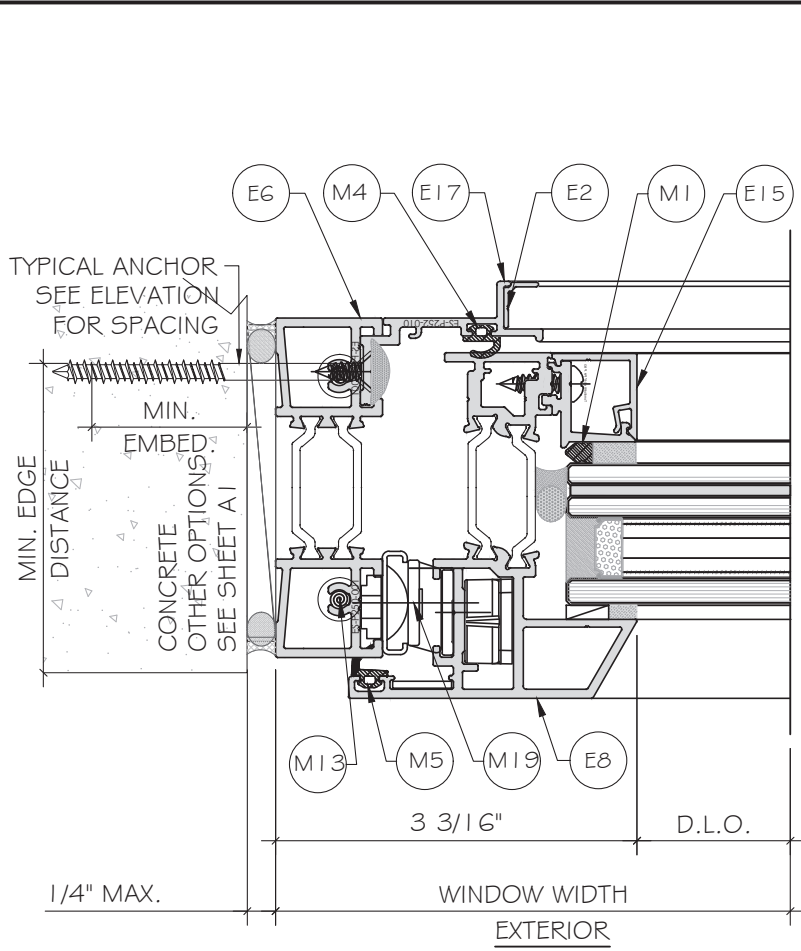
Drawn Date: 11.16.2023  
Scale:  
DRAWING NO.  
**AD21-53**

Sheet No.  
**D5**  
11 OF 16

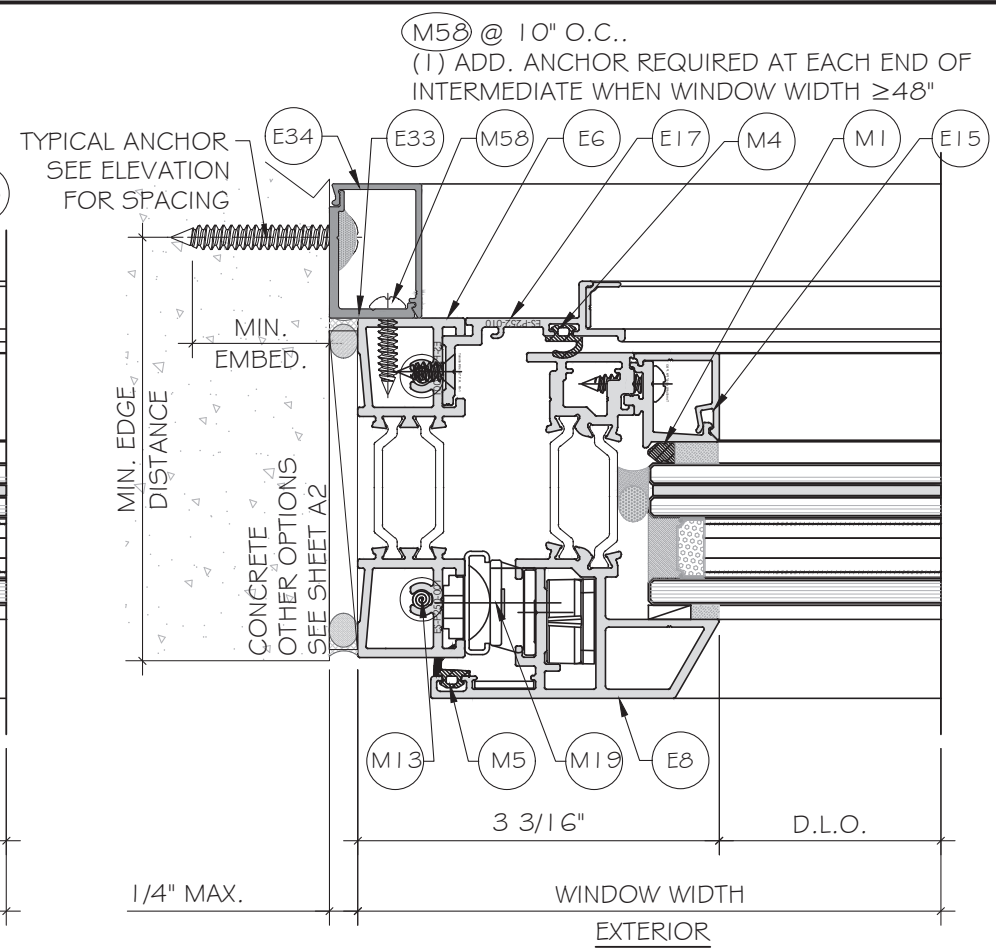




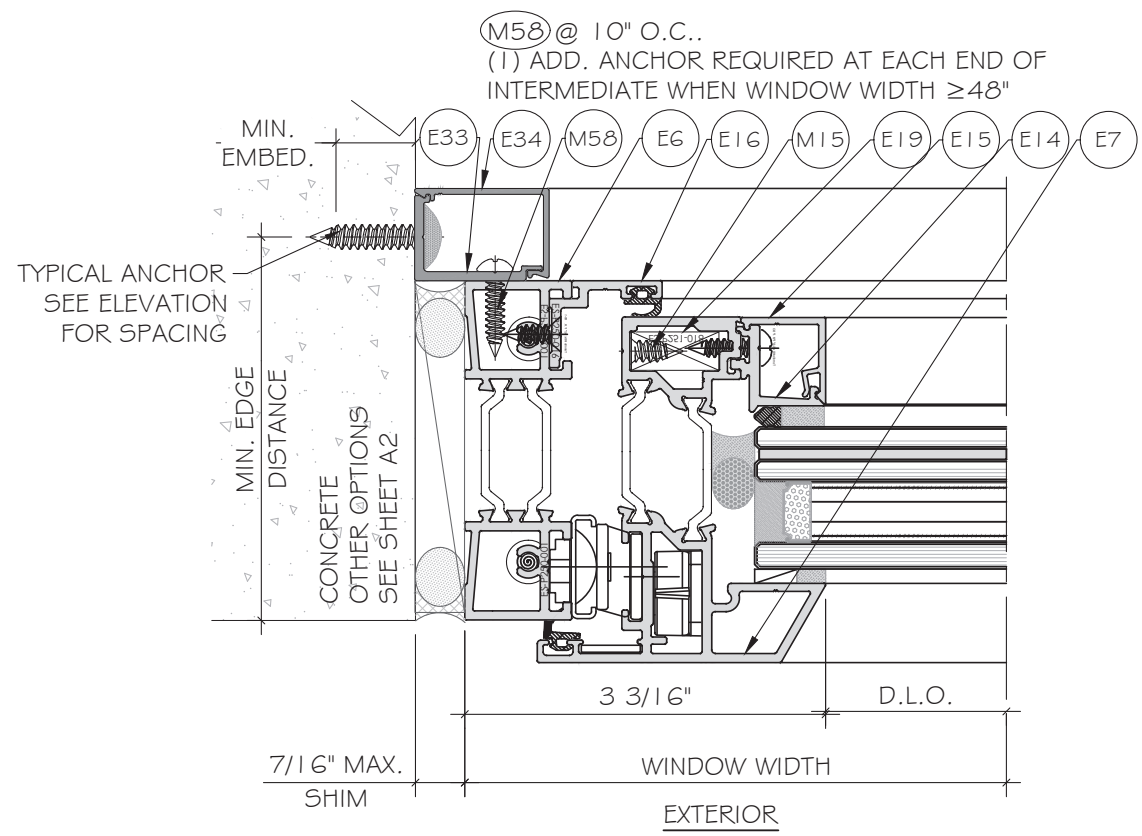
2  
D6  
DETAIL  
EXTERIOR



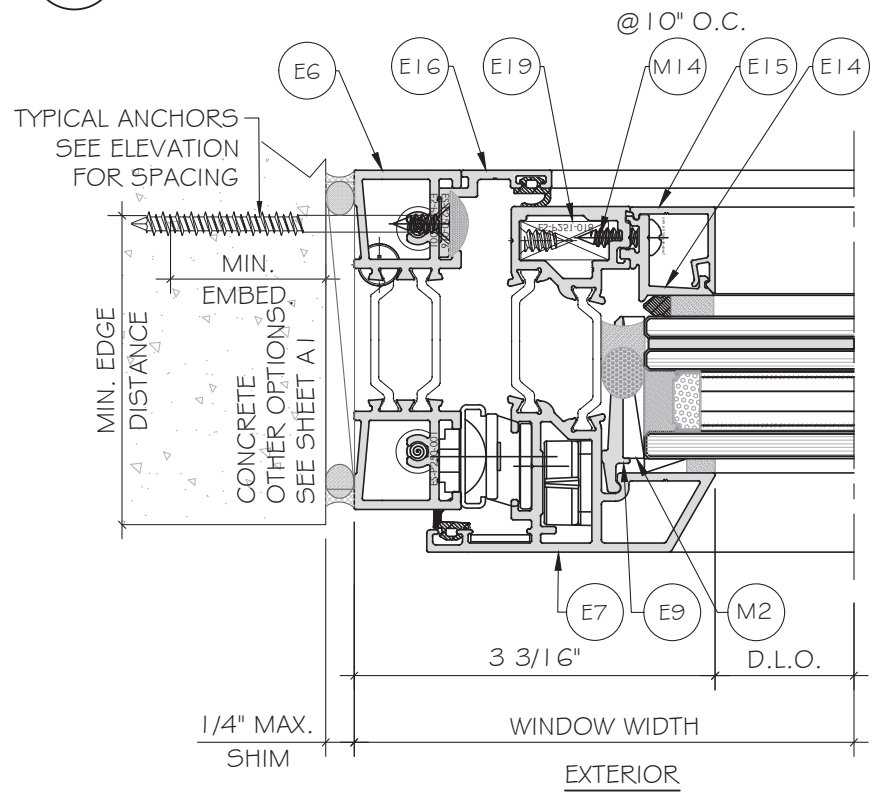
3  
D6  
DETAIL  
EXTERIOR



4  
D6  
DETAIL  
EXTERIOR

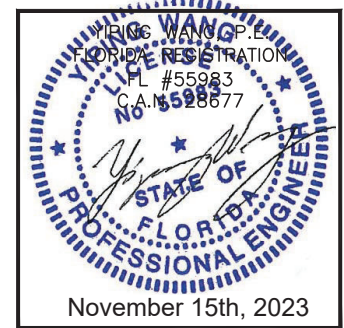


1  
D6  
DETAIL  
EXTERIOR



1  
D6  
DETAIL  
OPTION

FLORIDA APPROVAL:  
FL#40522.1

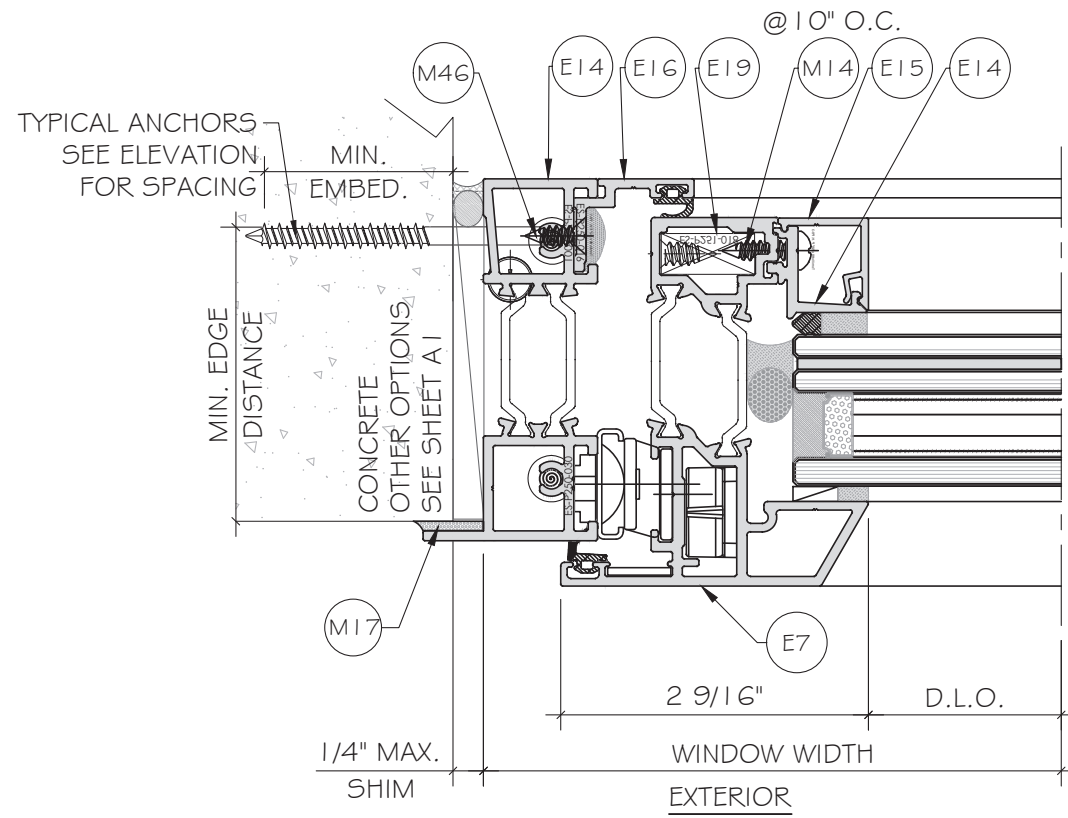


**MCY ENGINEERING, INC.**  
GLAZING CONSULTANTS  
12781 MIRAMAR PKWY, STE. 301  
MIRAMAR, FL 33027  
P: 305.271.0117  
www.MCYEngineering.com mcy@mcyengineering.com

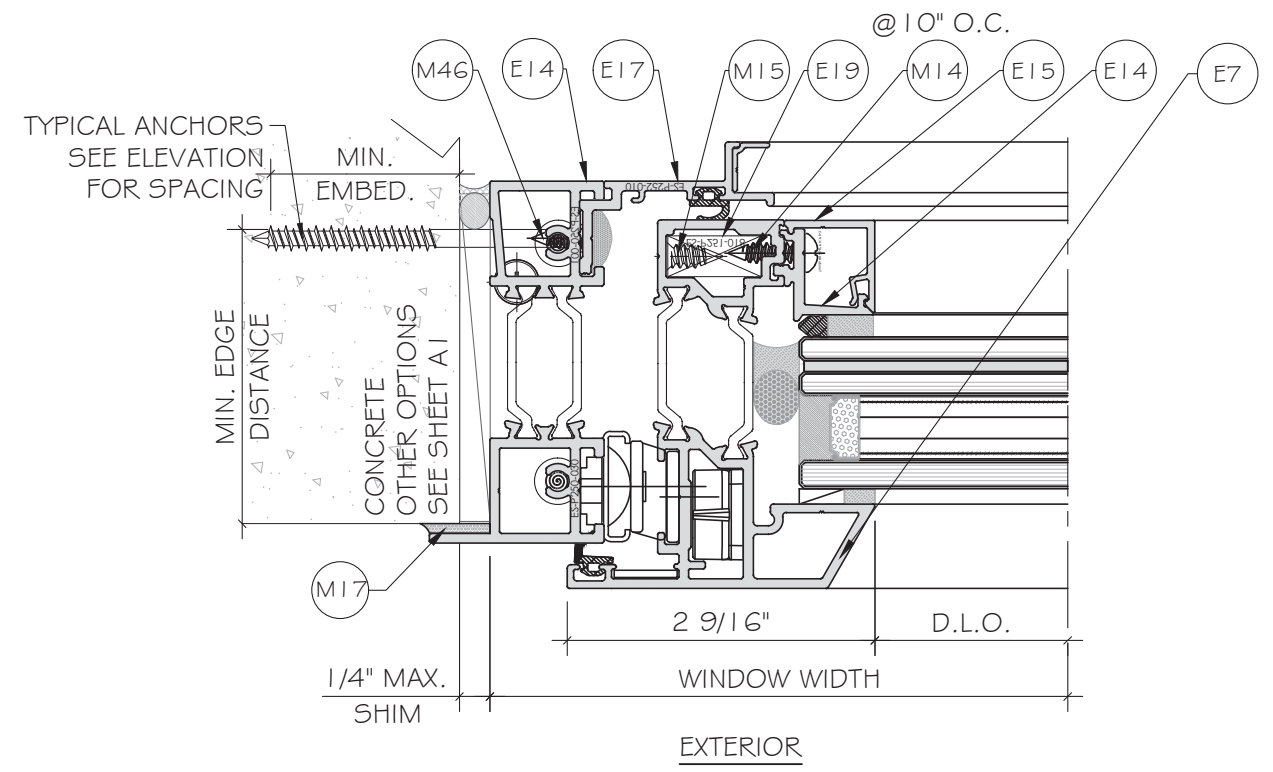
**ES-P300AWNING WINDOW - L.M.I. & S.M.I.**  
E.S. WINDOWS, INC.  
10653 NE QUAYBRIDGE CT.  
MIAMI, FL 33138  
TEL. (305) 624-7775

Rev. No.	Date	Drawn By	Description
R2	11.16.2023	JAMES	FBC UPDATE

Drawn Date: 11.16.2023  
Scale:  
DRAWING NO.: AD21-53  
D6  
Sheet No.: 12 OF 16

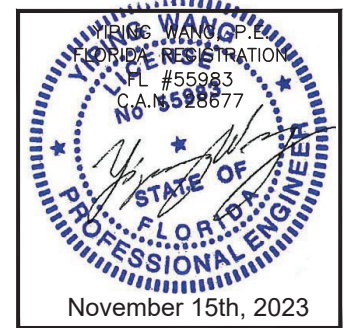


1  
D7  
DETAIL



1  
D7  
DETAIL  
SCREEN  
OPTION

FLORIDA APPROVAL:  
FL#40522.1

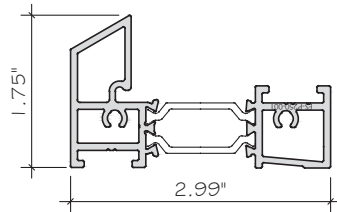


**MCY ENGINEERING, INC.**  
GLAZING CONSULTANTS  
12781 MIRAMAR PKWY, STE. 301  
MIRAMAR, FL 33027 P: 305.271.0117  
www.MCYEngineering.com mcy@mcyengineering.com

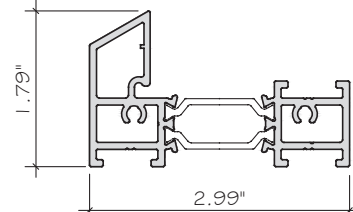
**ES-P300AWNING WINDOW - L.M.I & S.M.I**  
E.S. WINDOWS, INC.  
10653 NE QUAYBRIDGE CT.  
MIAMI, FL 33138  
TEL. (305) 624-7775

Rev. No.	Date	Drawn By	FBC UPDATE	Description
R2	11.16.2023	JAMES		

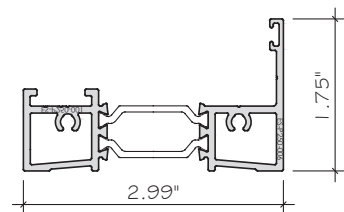
Drawn Date 11.16.2023	Scale
DRAWING NO. AD21-53	
Sheet No. D7	
13 OF 16	



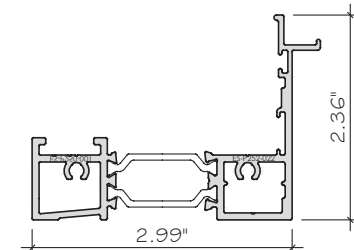
**E1** FRAME FOR FIXED  
ES-P300-501  
ALUM. 6063-T6



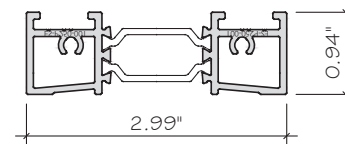
**E3** INTERMEDIATE FOR FIXED|AWNING  
ES-P300-503  
ALUM. 6063-T6



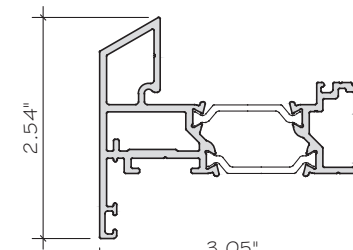
**E4** FRAME FOR VENT  
ES-P300-504  
ALUM. 6063-T6



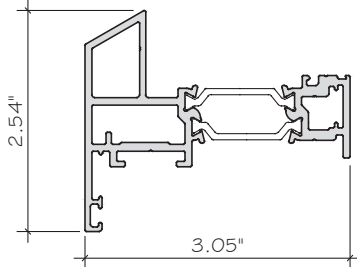
**E5** FRAME FOR VENT  
ES-P300-505  
ALUM. 6063-T6



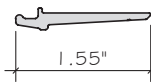
**E6** JAMB FOR FIXED|AWNING  
ES-P300-506  
ALUM. 6063-T6



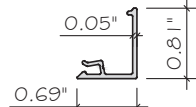
**E7** SASH  
ES-P300-507  
ALUM. 6063-T6



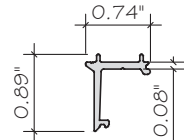
**E8** SASH (SCREEN)  
ES-P300-508  
ALUM. 6063-T6



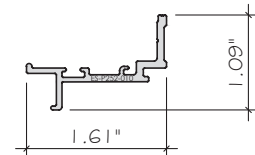
**E9** SETTING CHAIR  
ES-P300-002  
ALUM. 6063-T6



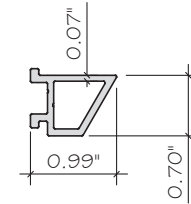
**E12** IMPACT GLASS STOP COVER  
ES-P300-005  
ALUM. 6063-T5



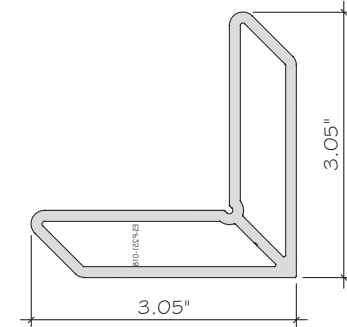
**E11** IMPACT GLASS STOP @FIXED  
ES-P300-004  
ALUM. 6063-T6



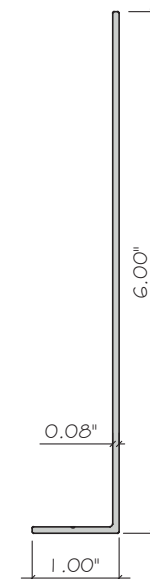
**E17** FRAME ADAPTOR FOR VENT (SCREEN)  
ES-P252-010  
ALUM. 6063-T6



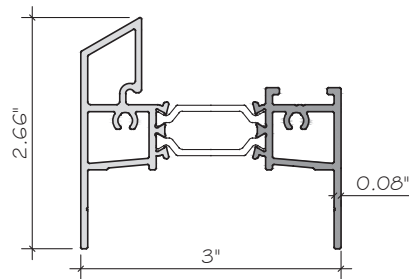
**E18** FRONT FRAME ADAPTOR  
ES-P300-018  
ALUM. 6063-T6



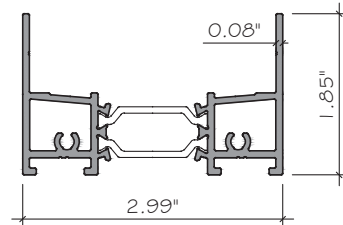
**E19** CORNER JOINT  
ES-P251-018  
ALUM. 6063-T6



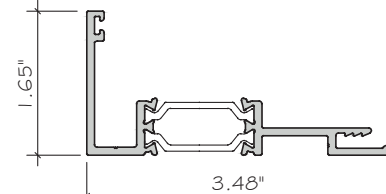
**E31** END DAM  
ES-CF-001  
ALUM. 6063-T5



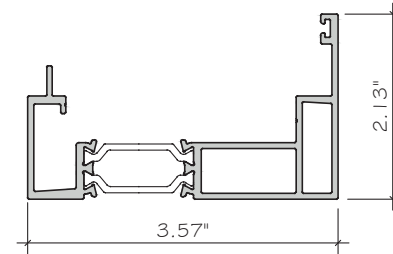
**E20** FIXED WINDOW HEAD/ JAMB FOR RECEPTOR  
ES-P300-513  
ALUM. 6063-T6



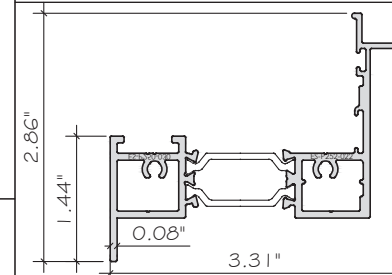
**E23** FIXED|AWNING JAMB FOR RECEPTOR  
ES-P300-522 ALUM. 6063-T6



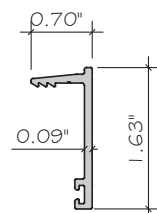
**E24** RECEPTOR HEAD/JAMB  
ES-P300-523  
ALUM. 6063-T6



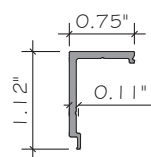
**E25** RECEPTOR SILL  
ES-P300-524  
ALUM. 6063-T6



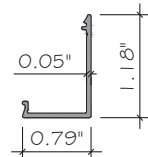
**E15** JAMB FOR ROTO-OPERATOR  
WITH FLANGE  
ES-P300-532  
ALUM. 6063-T6



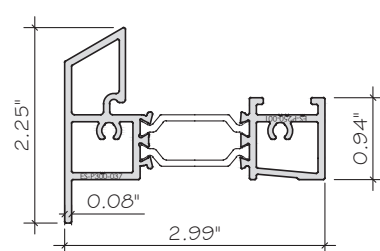
**E26** RECEPTOR STOP  
ES-P300-021  
ALUM. 6063-T6



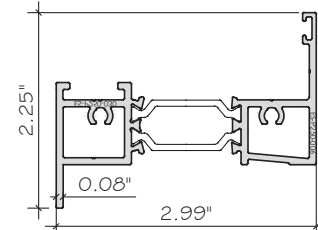
**E33** STRAP ANCHOR  
ES-P300-006  
ALUM. 6063-T5



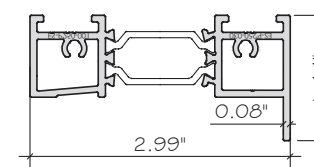
**E34** STRAP ANCHOR COVER  
ES-P300-007  
ALUM. 6063-T5



**E10** FRAME FOR FIXED  
STANDARD WITH FLANGE  
ES-P300-534ALUM.  
6063-T6

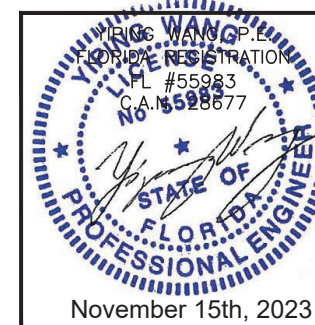


**E13** FRAME FOR LEVER  
HANDLE WITH FLANGE  
ES-P300-531  
ALUM. 6063-T6



**E14** JAMB FOR FIXED|AWNING  
WITH FLANGE  
ES-P300-533  
ALUM. 6063-T6

FLORIDA APPROVAL:  
**FL#40522.1**



**MCY ENGINEERING, INC.**  
GLAZING CONSULTANTS  
12781 MIRAMAR PKWY, STE. 301  
MIRAMAR, FL 33027 P: 305.271.0117  
www.MCYEngineering.com mcy@mcyengineering.com

**ES-P300AWNING WINDOW - L.M.I & S.M.I**  
**E.S. WINDOWS, INC.**  
10653 NE QUAYBRIDGE CT.  
MIAMI, FL 33138  
TEL: (305) 624-7775

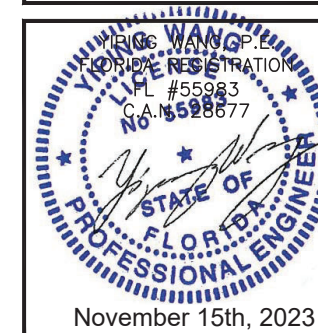
Rev. No.	Date	Drawn By	FBC UPDATE	Description
R2	11.16.2023	JAMES		
Drawn Date 11.16.2023		Scale		
DRAWING NO. <b>AD21-53</b>				
PART				
Sheet No. <b>14 OF 16</b>				



MATERIAL LIST			
CODE	PART	DESCRIPTION	MATERIAL
E1	ES-P300-501	FRAME FOR FIXED	ALUMINUM 6063-T6
E2	ES-5020	SCREEN HOLDER	ALUMINUM 6063-T5
E3	ES-P300-503	INTERMEDIATE FOR FIXED AWNING	ALUMINUM 6063-T6
E4	ES-P300-504	FRAME FOR VENT	ALUMINUM 6063-T6
E5	ES-P300-505	FRAME FOR VENT (SCREEN)	ALUMINUM 6063-T6
E6	ES-P300-506	JAMB FOR FIXED AWNING	ALUMINUM 6063-T6
E7	ES-P300-507	SASH	ALUMINUM 6063-T6
E8	ES-P300-508	SASH (SCREEN)	ALUMINUM 6063-T6
E9	ES-P300-002	SETTING CHAIR	ALUMINUM 6063-T6
E10	ES-P300-534	FRAME FOR FIXED STANDARD WITH FLANGE	ALUMINUM 6063-T6
E11	ES-P300-004	IMPACT GLASS STOP @FIXED	ALUMINUM 6063-T6
E12	ES-P300-005	IMPACT GLASS STOP COVER @FIXED	ALUMINUM 6063-T5
E13	ES-P300-531	FRAME FOR LEVER HANDLE WITH FLANGE	ALUMINUM 6063-T6
E14	ES-P300-533	JAMB FOR FIXED AWNING WITH FLANGE	ALUMINUM 6063-T6
E15	ES-P300-532	JAMB FOR ROTO-OPERADOR WITH FLANGE	ALUMINUM 6063-T6
E17	ES-P252-010	FRAME ADAPTOR FOR VENT (SCREEN)	ALUMINUM 6063-T6
E18	ES-P300-018	FRONT FRAME ADAPTOR	ALUMINUM 6063-T6
E19	ES-P251-018	CORNER JOINT	ALUMINUM 6063-T6
E20	ES-P300-513	FIXED WINDOW HEAD/JAMB FOR RECEPTOR	ALUMINUM 6063-T6
E23	ES-P300-522	FIXED AWNING JAMB FOR RECEPTOR	ALUMINUM 6063-T6
E24	ES-P300-523	RECEPTOR HEAD/JAMB	ALUMINUM 6063-T6
E25	ES-P300-524	RECEPTOR SILL	ALUMINUM 6063-T6
E26	ES-P300-021	RECEPTOR STOP	ALUMINUM 6063-T6
E30	ES-EUR-001	EUROBAR	ALUMINUM 6063-T6

MATERIAL LIST			
CODE	PART	DESCRIPTION	MATERIAL
E31	ES-CF-001	END DAM	ALUMINUM 6063-T5
E33	ES-P300-006	STRAP ANCHOR	ALUMINUM 6063-T5
E34	ES-P300-007	STRAP ANCHOR COVER	ALUMINUM 6063-T5
M1	ES-SD451-G04	WEDGE GASKET @ GLASS PERIMETER	SILICONE 60±3 SHORE A
M2	ES-4520-B02A	SETTING BLOCK	SILICONE 80±3 SHORE A
M3	ES-5008A	BUBBLE GASKET @ GLAZING BEAD & RECEPTOR	SILICONE 65±5 SHORE A
M4	ES-PI312T-G03A	INTERNAL FLIPPER GASKET @ FRAME PERIMETER	SILICONE
M5	ES-EL300-G01	EXTERNAL FLIPPER GASKET @ FRAME PERIMETER	EPDM CO-EXTRUDED 65±5 SHORE A
M6	ES-7530-G06	TONGUE GASKET @3 PIECE MULLION	EPDM 60 DUROMETER
M7	1/8" x 1/2" TAPE	DOUBLE FACE TAPE	POLYURETHENE
M8	CORNER JOINT 0423	CORNER JOINT	DIE CAST ALUMINUM
M9	HC-200-M01	CORNER LOCK FOR SASH	ALUMINUM
M10	PJS-43-SS	CORNER KEY PJS-43-SS	STAINLESS STEEL
M11	WPSA-N1	RETICULATED FOAM 30PPI 3/4" x 3/4" x 2"	OPEN CELL FOAM
M12	1222-XXX	WEEP HOLE COVER	NYLON 6
M13	#10 x 1/4" PH	ASSEMBLY SCREW	STAINLESS STEEL
M14	#8 x 5/8" PH	SCREW FOR GLASS STOP	STAINLESS STEEL
M15	#8 x 1/2" FH	SCREW FOR CORNER KEY ES-P251-018	STAINLESS STEEL
M16	DOWSIL 983	STRUCTURAL SILICONE	SILICONE
M17	DOWSIL 791	SEALANT SILICONE	SILICONE
M18	BACKER ROD 1/2"	BACKER ROD OPEN CELL @ GLASS PERIMETER	POLYURETHENE

FLORIDA APPROVAL:  
FL#40522.1



**MCY ENGINEERING, INC.**  
GLAZING CONSULTANTS  
12781 MIRAMAR PKWY, STE. 301  
MIRAMAR, FL 33027 P: 305.271.0117  
www.MCYEngineering.com mcy@mcyengineering.com

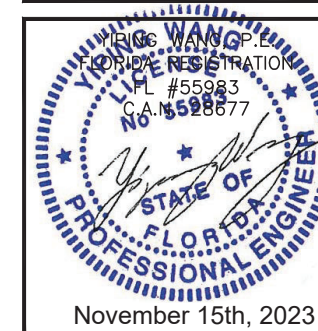
**ES-P300AWNING WINDOW - L.M.I & S.M.I.**  
E.S.WINDOWS, INC.  
10653 NE QUAYBRIDGE CT.  
MIAMI, FL 33138  
TEL: (305) 624-7775

Drawn Date	Scale
11.16.2023	
Drawn By	JAMES
Date	11.16.2023
Rev. No.	R2
Description	
DRAWING NO. AD21-53	
BOM	
Sheet No. 15 OF 16	

MATERIAL LIST			
CODE	PART	DESCRIPTION	MATERIAL
M19	SERIE 5800 4 BAR HINGE	FOR AWNING	STAINLESS STEEL
M20	SHIM 1529-XX	ALUMINUM	STAINLESS STEEL
M21	#10x1/2" P.H.	SCREW FOR HINGE	STAINLESS STEEL
M22	1208 MAGICUBE CONCEALED HINGES	FOR AWNING	STAINLESS STEEL
M24	SNUBBER	SNBB KIT MV LM 4200-D VS/BS TS BI 857052	STAINLESS STEEL
M25	LIMIT DEVICE 20J0023	FOR AWNING	STAINLESS STEEL
M27	#10x1/2" F.H. PIN IN - HEX	SECURITY SCREW FOR LIMIT DEVICE	STAINLESS STEEL
M28	HANDLE SI LINE LM DA	LEVER HANDLE	DIE CAST ALUMINUM
M29	FLANGE SLEEVE 899915	FLANGE SLEEVE	STAINLESS STEEL
M30	SCREW M5X6-A2 701.9002.5015.A0	SCREW FOR LEVER HANDLE	STAINLESS STEEL
M31	HANDLE PIN MFKL0020-000010	HANDLE PIN	STAINLESS STEEL
M32	HANDLE FORK 72 mm	FOR HANDLE	DIE CAST ALUMINUM
M33	#8x1/2" F.H.	SCREW FOR LEVER HANDLE	STAINLESS STEEL
M34	LOCK PLATE 1315-S4	FOR LOCKING SYSTEM	DIE CAST ALUMINUM
M35	EURO GROOVE KEEPER 1303-260	FOR LOCKING SYSTEM	DIE CAST ALUMINUM
M36	CO11-0453-085 OPERATOR NARROW	AWNING OPERATOR	STAINLESS STEEL
M37	CO11-0169-085 or CO11-170-085 HEAVY OPERATOR	14,5" HD OPERATOR	STAINLESS STEEL
M38	CO11-2202 OPERATOR SPACER 2.4 MM	FOR AWNING	ABS
M40	CO11-0606-XXX RH OPERATOR HANDLE	FOR AWNING & CASEMENT	ABS

MATERIAL LIST			
CODE	PART	DESCRIPTION	MATERIAL
M43	CO11-0510 AWNING ST/ST BRACKET	FOR AWNING	STAINLESS STEEL
M44	CO01-4000 OPERATOR CLAMP WASHER	FOR OPERATOR (x2)	STAINLESS STEEL
M45	#8-32 x 1/2" FH	OPERATOR CLAMP WASHER (x1)	STAINLESS STEEL
M46	#8 x 1/2" FH	SCREW FOR BRACKET & TRACK	STAINLESS STEEL
M47	#8 x 3/4" PH	SCREW FOR OPERATOR	STAINLESS STEEL
M48	CLO1-0475	LOCKING HANDLE	DIE CAST ZINC ALLOY
M49	CLO2-00XX	STEEL BAR	STAINLESS STEEL
M50	CLO2-2045-XXX	SNAP ON COVER	COPOLYMER / DIE CAST ZINC ALLOY
M51	CLO2-1020-XXX CLO2-1021-XXX	SNAP ON HANDLE	DIE CAST ALUMINUM
M52	CO01-4001 LOCKINGPOINT CLAMP WASHER	FOR LOCKING HANDLE (x2)	STAINLESS STEEL
M53	CLO2-2059-00B	STRIKER	ABS
M54	CLO2-2060-00B	LOCKING BAR GUIDE	ABS
M55	#8 x 3/4" PH	STRIKER (x2) LOCKING BAR GUIDE (x2) OPERATOR (x6)	STAINLESS STEEL
M56	#8-32 x 1/2" PH	MULTIPOINT CLAMP WASHER (x1)	STAINLESS STEEL
M58	#12-1/2" PH	FOR STRAP ANCHOR	STAINLESS STEEL

FLORIDA APPROVAL:  
FL#40522.1



**MCY ENGINEERING, INC.**  
GLAZING CONSULTANTS  
12781 MIRAMAR PKWY, STE. 301  
MIRAMAR, FL 33027 P: 305.271.0117  
www.MCYEngineering.com mcy@mcyengineering.com

**ES-P300AWNING WINDOW - L.M.I & S.M.I**  
**E.S.WINDOWS, INC.**  
10653 NE QUAYBRIDGE CT.  
MIAMI, FL 33138  
TEL: (305) 624-7775

Rev. No.	Date	Drawn By	Description
R2	11.16.2023	JAMES	FBC UPDATE
Drawn Date 11.16.2023		Scale	
DRAWING NO. AD21-53			
BOM			
Sheet No.		16 OF 16	