

ES.WINDOWS

ES-P300 AWNING WINDOW - NON IMPACT

GENERAL NOTES:

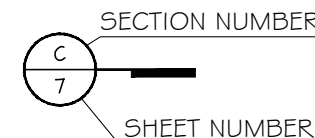
- THIS PRODUCT HAS BEEN DESIGNED AND TESTED TO COMPLY WITH THE REQUIREMENTS OF THE 7TH EDITION OF FLORIDA BUILDING CODE 2020/ 8TH EDITION OF FLORIDA BUILDING CODE 2023 NOT INCLUDING HIGH VELOCITY HURRICANE ZONE (HVHZ).
- WINDOWS ARE RATED FOR NON IMPACT. IMPACT SHUTTERS ARE REQUIRED WHEN USED IN HVHZ.
- THESE WINDOWS ARE APPROVED FOR AIR AND WATER INFILTRATION.
- ANCHORS SHALL BE AS LISTED, SPACED AS SHOWN ON DETAILS. ANCHORS EMBEDMENT TO BASE MATERIAL SHALL BE BEYOND WALL DRESSING OR STUCCO.
- ANCHORING OR LOADING CONDITIONS NOT SHOWN IN THESE DETAILS ARE NOT PART OF THIS APPROVAL.
- MATERIALS INCLUDING BUT NOT LIMITED TO STEEL/ METAL SCREWS THAT COME INTO CONTACT WITH OTHER DISSIMILAR MATERIALS SHALL MEET THE REQUIREMENTS OF THE 7TH EDITION OF FLORIDA BUILDING CODE 2020/ 8TH EDITION OF FLORIDA BUILDING CODE 2023 SECTION AS APPLICABLE.
- METAL STRUCTURES BY OTHERS TO BE DESIGNED TO SUPPORT THE LOADS IMPOSED BY THIS GLAZING SYSTEM AND TO TRANSFER SUCH LOADS TO THE BUILDING MAIN STRUCTURE.
- ULTIMATE LOAD OBTAINED FROM ASCE 7-16/ ASCE 7-22, MULTIPLY BY 0.6 SHALL BE LESS THAN OR EQUAL TO MAX. DESIGN LOAD IN THIS DOCUMENT. THE DESIGN LOADS SHOWN IN THIS DOCUMENT ARE ALLOWABLE DESIGN LOADS.
- MANUFACTURER'S LABEL SHALL BE LOCATED ON A READILY VISIBLE LOCATION IN ACCORDANCE WITH SECTION 1709.9.3 OF FLORIDA BUILDING CODE LABELING TO COMPLY WITH SECTION 1709.9.2.
- SEALANT:
ALL FRAME CORNERS, JOINTS, MULLION SEAMS AND PERIMETER GLAZING BEAD TO FRAME INSTALLATION FASTENERS SEALED WITH SILICONE SEALANT.

USE CHARTS AS FOLLOWS.

- STEP 1:** DETERMINE DESIGN WIND LOAD REQUIREMENTS BASED ON WIND VELOCITY, BLDG. HEIGHT, WIND ZONE USING APPLICABLE ASCE 7-16/ ASCE 7-22 STANDARD OR WIND TUNNEL REPORTS.
- STEP 2:** SEE SHEET E1 FOR APPROVED TYPICAL ELEVATION & CONFIGURATION.
- STEP 3:** ANCHOR OPTION SEE SHEET A1 TO A3. ANCHOR SPACING SEE CHART ON SHEET E1.
- STEP 4:** THE LOWEST VALUE RESULTING FROM STEPS 2 & 3 THAT EXCEED THE DESIGN WIND PRESSURES DETERMINED THRU STEP 1 SHALL APPLY TO ENTIRE SYSTEM.

ABBREVIATIONS AND SYMBOLS

- G.B. - GLASS BITE
- D.L.O. - DAYLITE OPENING
- F.H. - FRAME HEIGHT
- F.W. - FRAME WIDTH
- W/ - WITH
- W/O - WITHOUT
- O.C. - ON CENTER



LIMITATIONS OF USE

A- THIS PRODUCT EVALUATION DOCUMENT (P.E.D.) PREPARED BY THIS ENGINEER IS GENERIC AND DOES NOT PROVIDE INFORMATION FOR A SITE SPECIFIC PROJECT; I.E. WHERE THE SITE CONDITIONS DEVIATE FROM THE P.E.D.

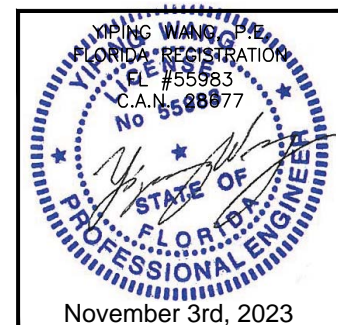
B- CONTRACTOR TO BE RESPONSIBLE FOR THE SELECTION, PURCHASE AND INSTALLATION OF THIS PRODUCT BASED ON THIS PRODUCT EVALUATION PROVIDED HE/SHE DOES NOT DEVIATE FROM THE CONDITIONS DETAILED ON THIS DOCUMENT.

C- THIS PRODUCT EVALUATION DOCUMENT WILL BE CONSIDERED INVALID IF ALTERED BY ANY MEANS.

D- SITE SPECIFIC PROJECTS SHALL BE PREPARED BY A FLORIDA REGISTERED ENGINEER OR ARCHITECT WHICH WILL BECOME THE ENGINEER OF RECORD (E.O.R.) FOR THE PROJECT AND WHO WILL BE RESPONSIBLE FOR THE PROPER USE OF THE P.E.D.

E- THIS P.E.D. SHALL BEAR THE DATE AND ORIGINAL SEAL AND SIGNATURE OF THE PROFESSIONAL ENGINEER OF RECORD THAT PREPARED IT.

FLORIDA APPROVAL:
FL#40522.2



MCY ENGINEERING, INC.
GLAZING CONSULTANTS

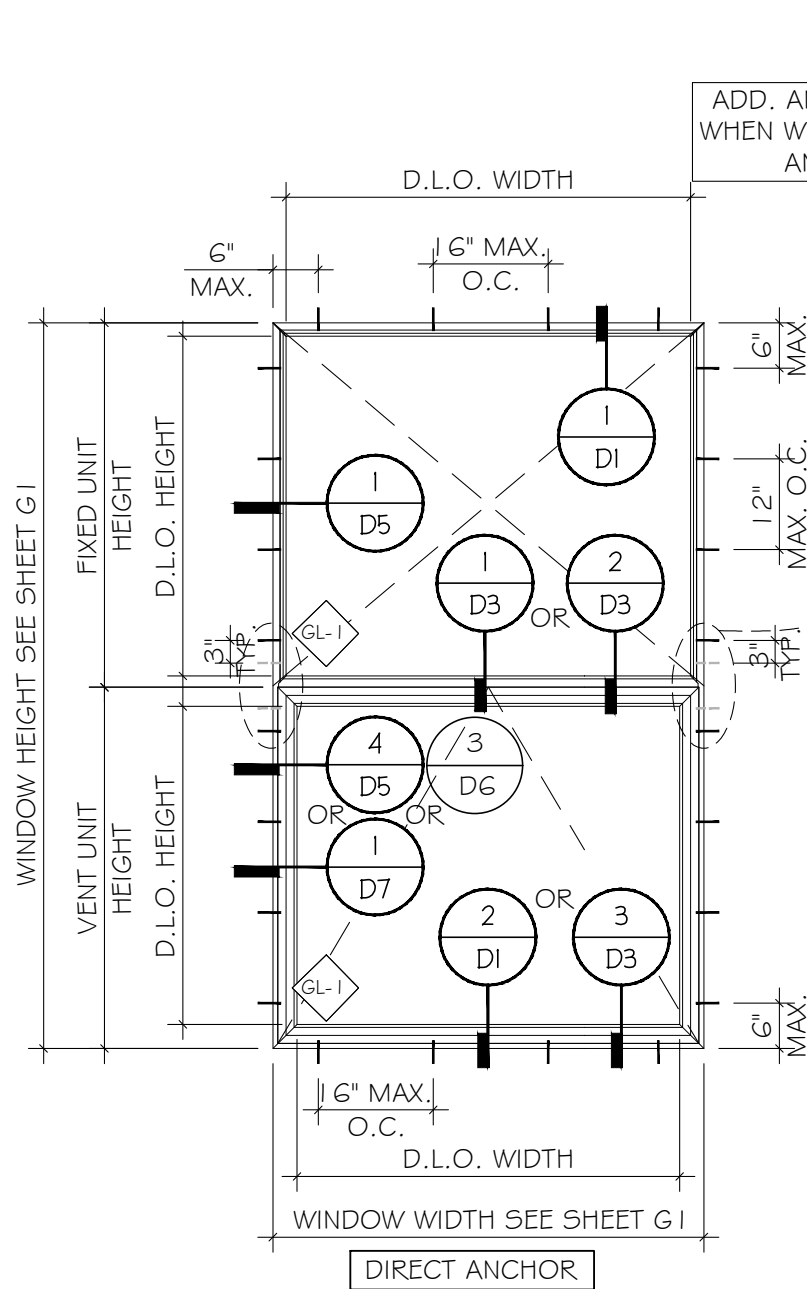
12781 MIRAMAR PKWY, STE. 301
MIRAMAR, FL 33027 P: 305.271.0117
www.MCYEngineering.com mcy@mcyengineering.com

ES-P300AWNING WINDOW - N.I.

E.S.WINDOWS, INC.
10653 NE QUAYBRIDGE CT.
MIAMI, FL 33138
TEL.(305) 624-7775

| Rev. No. | Date | Drawn By | FBC UPDATE | Description |
|----------|------------|----------|------------|-------------|
| R2 | 10.31.2023 | JAMES | | |

| | | | |
|----------------|------------|-------|--|
| Drawn Date | 10.31.2023 | Scale | |
| DRAWING NO. | | | |
| AD21-54 | | | |
| COVER | | | |
| Sheet No. | | | |
| 1 OF 16 | | | |

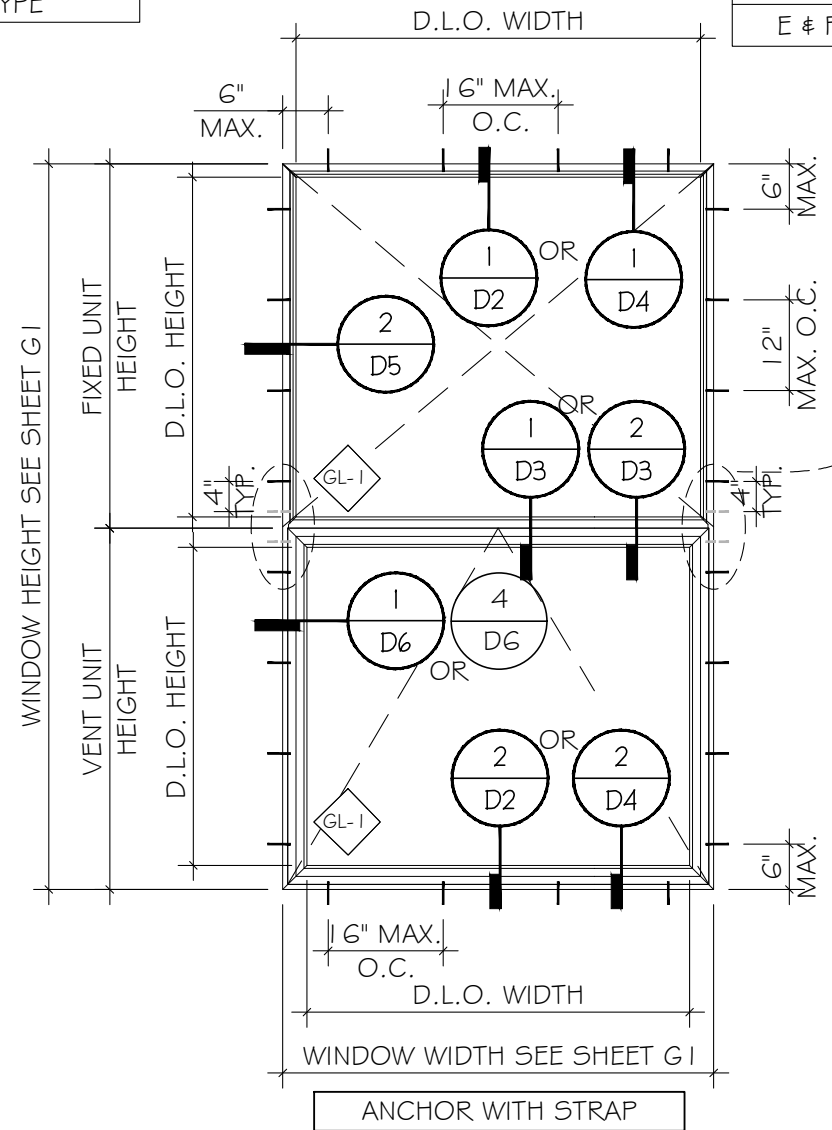


TYPICAL WINDOW ELEVATIONS

MAX. D.L.O. AREA FOR FIXED UNIT = 16.9 SQ.FT.
 MAX. D.L.O. AREA FOR VENT UNIT = 14.80 SQ.FT.

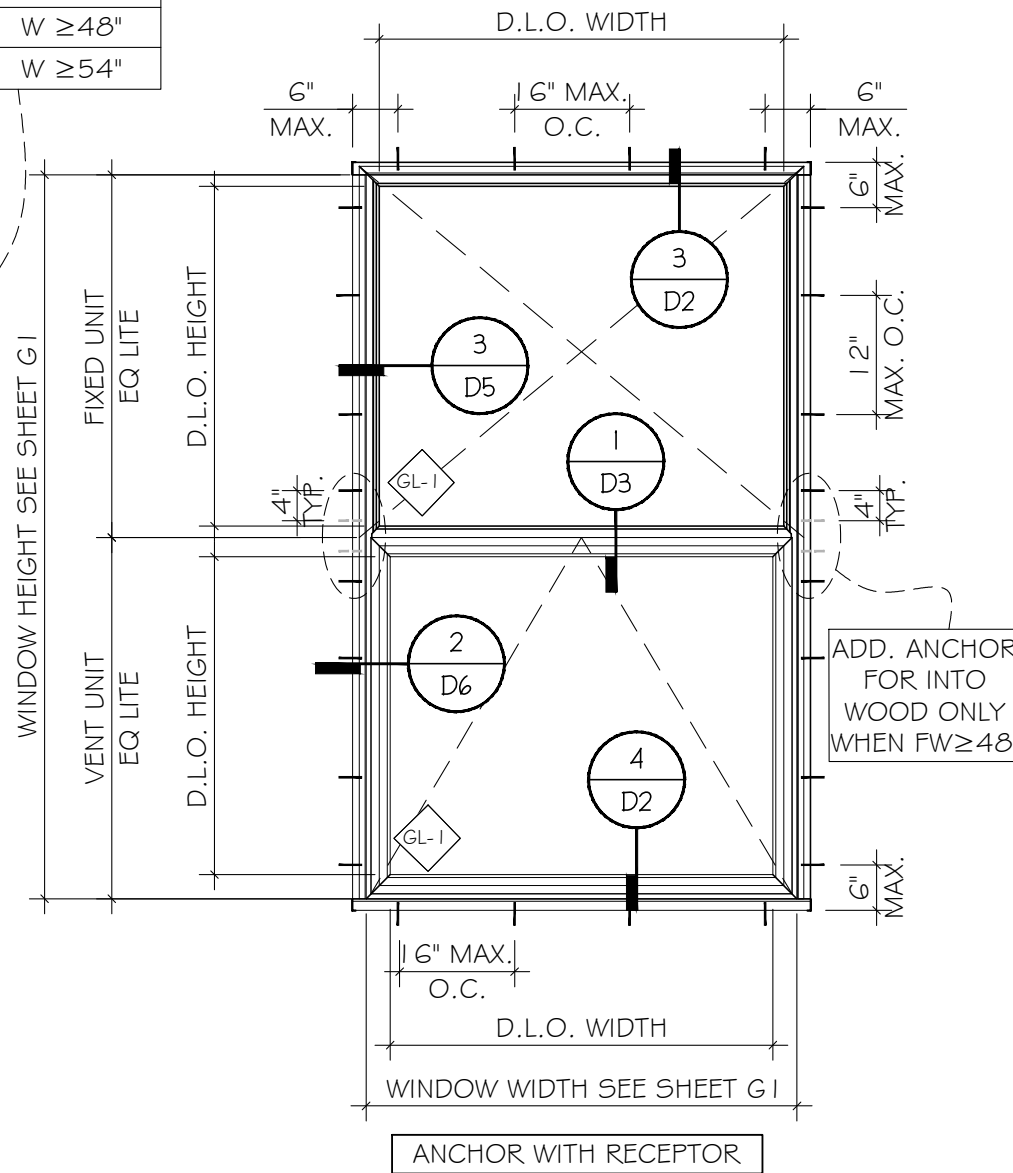
ADD. ANCHOR REQUIRED
 WHEN WIDTH > 48" FOR ALL
 ANCHOR TYPE

| ADD. ANCHOR REQUIRED | |
|----------------------|---------|
| ANCHOR TYPE | WIDTH |
| D | W ≥ 48" |
| E & F | W ≥ 54" |



TYPICAL WINDOW ELEVATIONS

MAX. D.L.O. AREA FOR FIXED UNIT = 16.9 SQ.FT.
 MAX. D.L.O. AREA FOR VENT UNIT = 14.80 SQ.FT.

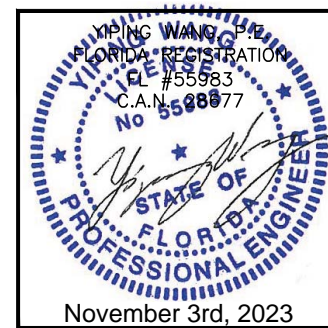


TYPICAL WINDOW ELEVATIONS

MAX. D.L.O. AREA FOR FIXED UNIT = 16.9 SQ.FT.
 MAX. D.L.O. AREA FOR VENT UNIT = 14.80 SQ.FT.

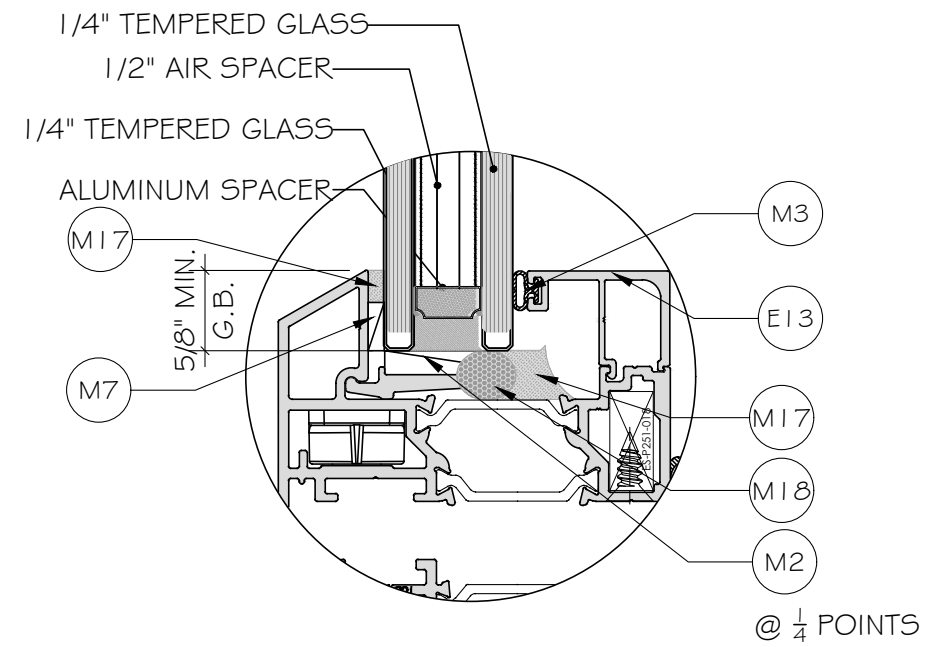
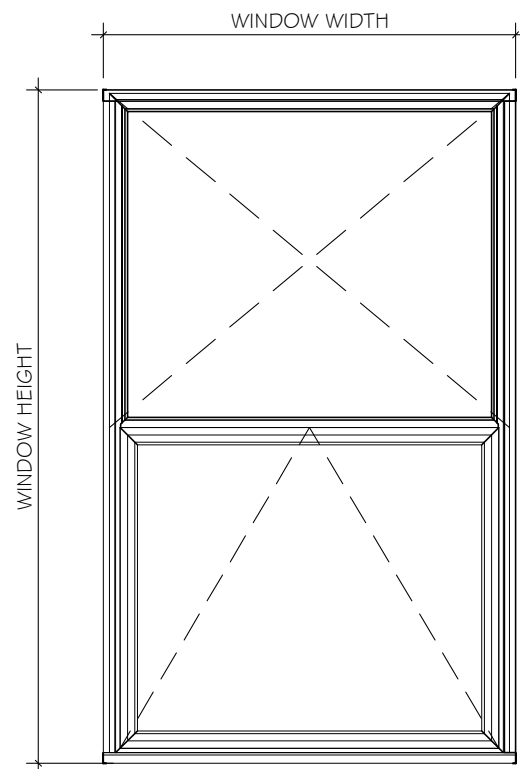
ADD. ANCHOR FOR INTO
 WOOD ONLY
 WHEN FW ≥ 48"

FLORIDA APPROVAL:
 FL#40522.2



| Rev. No. | Date | Drawn By | FBC UPDATE | Description |
|--------------------------|------------|----------|------------|-------------|
| R2 | 10.31.2023 | JAMES | | |
| Drawn Date 10.31.2023 | | Scale | | |
| DRAWING NO. AD21-54 | | | | |
| Sheet No. E1 | | | | |
| 2 OF 16 | | | | |

| AWNING WINDOW ALLOWABLE PRESSURE | | | |
|----------------------------------|--------------|----------------|-------------|
| WINDOW HEIGHT | WINDOW WIDTH | ALLOWABLE LOAD | |
| | | PSF EXT (+) | PSF INT (-) |
| 72.0 | 24.0 | 100 | 100 |
| | 30.0 | 100 | 100 |
| | 36.0 | 100 | 100 |
| | 42.0 | 100 | 100 |
| | 48.0 | 95.0 | 100 |
| | 54.0 | 84.0 | 95.0 |
| 78.0 | 24.0 | 100 | 100 |
| | 30.0 | 100 | 100 |
| | 36.0 | 100 | 100 |
| | 42.0 | 100 | 100 |
| | 48.0 | 95.0 | 100 |
| | 54.0 | 84.0 | 95.0 |
| 84.0 | 24.0 | 100 | 100 |
| | 30.0 | 100 | 100 |
| | 36.0 | 100 | 100 |
| | 42.0 | 100 | 100 |
| | 48.0 | 95.0 | 100 |
| | 54.0 | 84.0 | 95.0 |
| 90.0 | 24.0 | 100 | 100 |
| | 30.0 | 100 | 100 |
| | 36.0 | 100 | 100 |
| | 42.0 | 100 | 100 |
| | 48.0 | 95.0 | 100 |
| | 54.0 | 84.0 | 95.0 |
| 96.0 | 24.0 | 100 | 100 |
| | 30.0 | 100 | 100 |
| | 36.0 | 100 | 100 |
| | 42.0 | 100 | 100 |
| | 48.0 | 95.0 | 100 |
| | 54.0 | 84.0 | 95.0 |
| | 57.0 | 80.0 | 90.0 |



GLASS TYPE "GL-1"
1" INSULATED GLASS

NOTE:
GLASS COMPLIES WITH ASTM E 1300-16
(3 SEC. GUSTS).

FLORIDA APPROVAL:
FL#40522.2

YIPING WANG
FLORIDA REGISTRATION
EL #55983
C.A.N. 08877
No 559877
STATE OF FLORIDA
PROFESSIONAL ENGINEER
November 3rd, 2023

MCY ENGINEERING, INC.
GLAZING CONSULTANTS
12781 MIRAMAR PKWY, STE. 301
MIRAMAR, FL 33027 P: 305.271.0117
www.MCYEngineering.com mcy@mcyengineering.com

ES-P300AWNING WINDOW - N.I.
E.S.WINDOWS, INC.
10653 NE QUAYBRIDGE CT.
MIAMI, FL 33138
TEL. (305) 624-7775

| Rev. No. | Date | Drawn By | FBC UPDATE | Description |
|----------|------------|----------|------------|-------------|
| R2 | 10.31.2023 | JAMES | | |

Drawn Date: 10.31.2023 Scale: _____

DRAWING NO. AD21-54

Sheet No. 3 OF 16

ANCHOR OPTIONS:

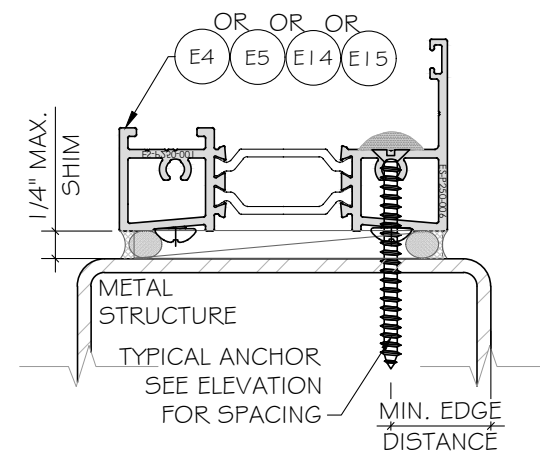
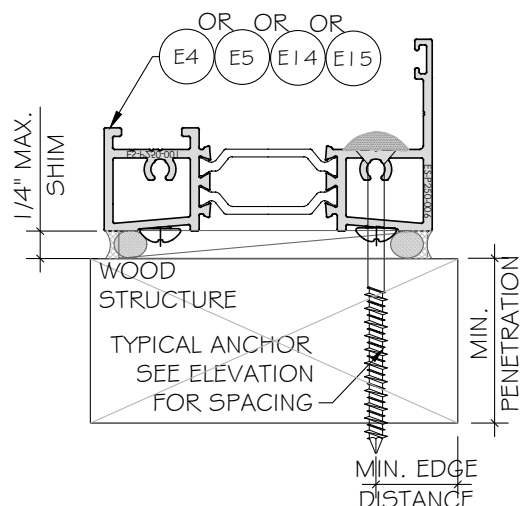
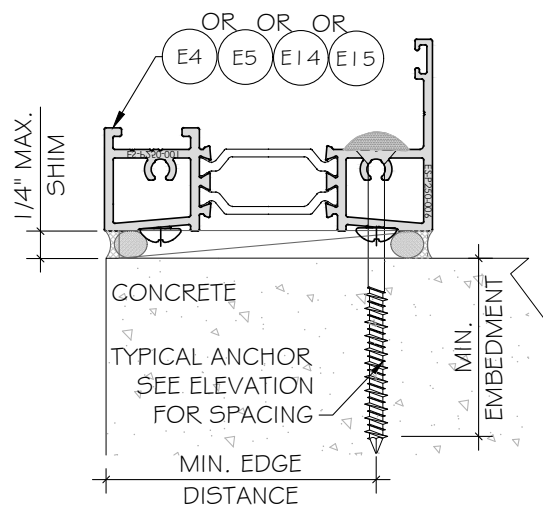
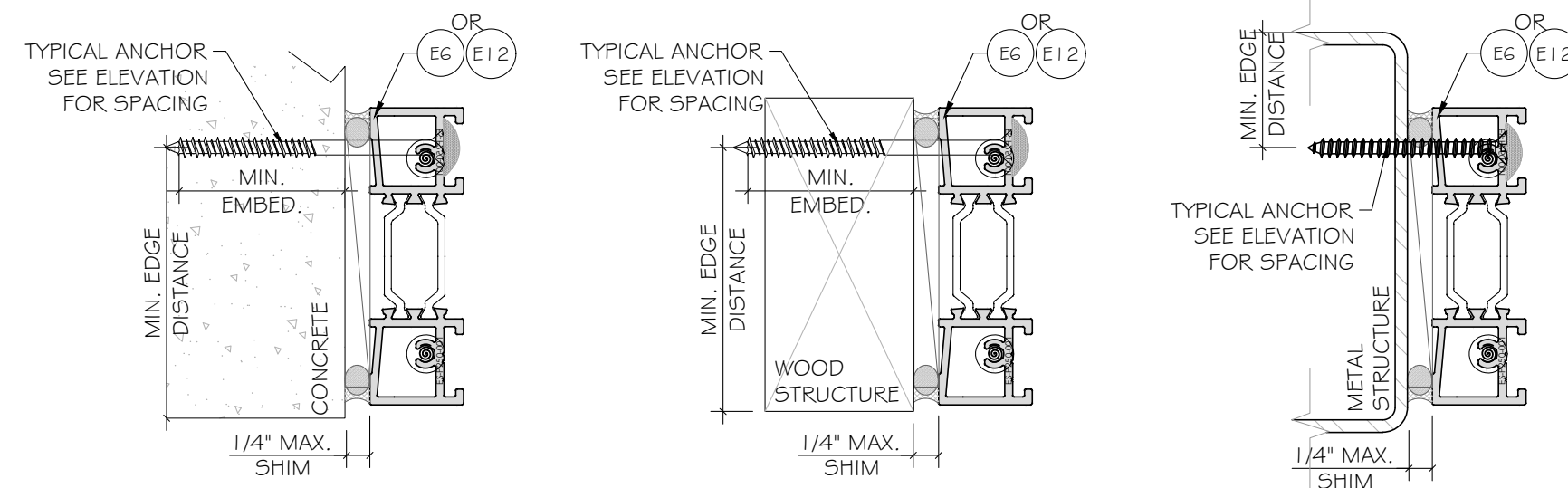
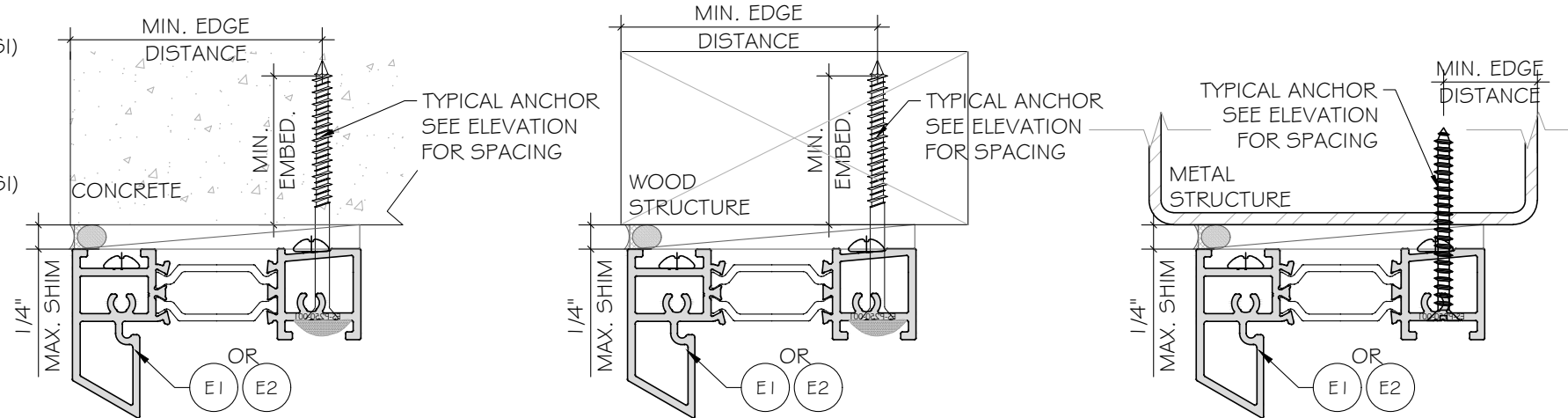
ANCHOR TYPE 'A' - 3/16" DIA. ULTRACON BY 'DEWALT'(Fu=164 KSI, Fy=117 KSI) INTO 2BY WOOD BUCKS (SG=0.55 MIN.) WITH 1 1/2" MIN. PENETRATION. OR THRU 1 BY WOOD BUCK INTO CONCRETE WITH MIN. 1 3/4" EMBEDMENT.

ANCHOR TYPE 'B' - 3/16" DIA. ULTRACON BY 'DEWALT'(Fu=164 KSI, Fy=117 KSI) DIRECTLY INTO CONCRETE Fc=3KSI MIN. W/1 3/4" MIN. EMBEDMENT

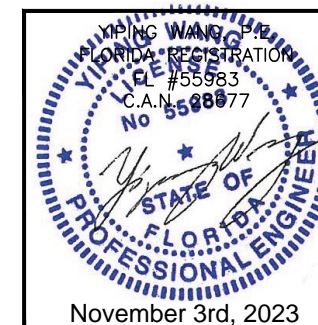
ANCHOR TYPE 'C' - #10 - SELF DRILLING SCREW GRADE 5 (Fu=120KSI, Fy=92KSI) INTO F.B.C. APPROVED MULLIONS OR INTO METAL STRUCTURES. (3) THREADS MIN. PENETRATION BEYOND METAL SUBSTRATE

ALUMINUM: 1/8" THK. MIN. (6063-T5, MIN)
 STEEL: 1/8" THK. MIN. (Fy=36KSI MIN)
 STEEL: 1/8" THK. STL STRUCTURE
 (STEEL IN CONTACT WITH ALUMINUM TO BE PLATED OR PAINTED)

TYPICAL EDGE DISTANCE INTO CONCRETE = 2 1/2" MIN.
 INTO WOOD = 1" MIN.
 INTO METAL STRUCTURE = 1/2" MIN.



FLORIDA APPROVAL:
FL#40522.2



MCY ENGINEERING, INC.
 GLAZING CONSULTANTS
 12781 MIRAMAR PKWY, STE. 301
 MIRAMAR, FL 33027 P: 305.271.0117
 www.MCYEngineering.com mcy@mcyengineering.com

ES-P300AWNING WINDOW - N.I.
E.S. WINDOWS, INC.
 10653 NE QUAYBRIDGE CT.
 MIAMI, FL 33138
 TEL. (305) 624-7775

| Rev. No. | Date | Drawn By | Description |
|------------------------|------------|----------|-------------|
| R2 | 10.31.2023 | JAMES | FBC UPDATE |
| Drawn Date: 10.31.2023 | | Scale: | |
| DRAWING NO. AD21-54 | | | |
| Sheet No. A1 | | | |
| 4 OF 16 | | | |

ANCHOR OPTIONS:

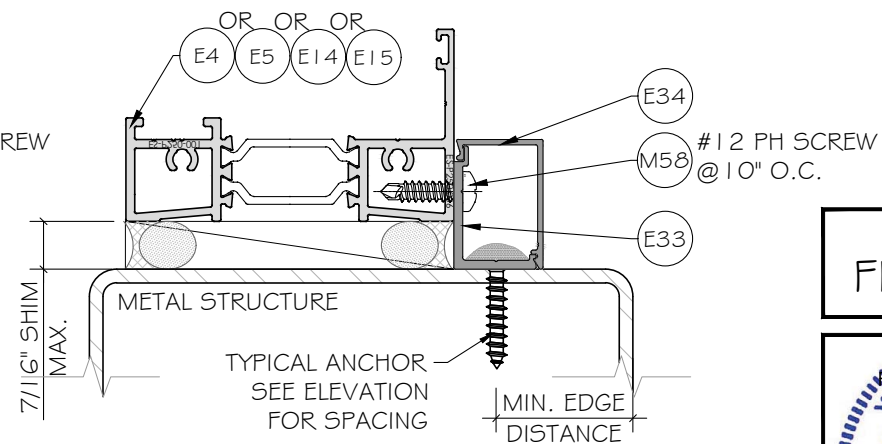
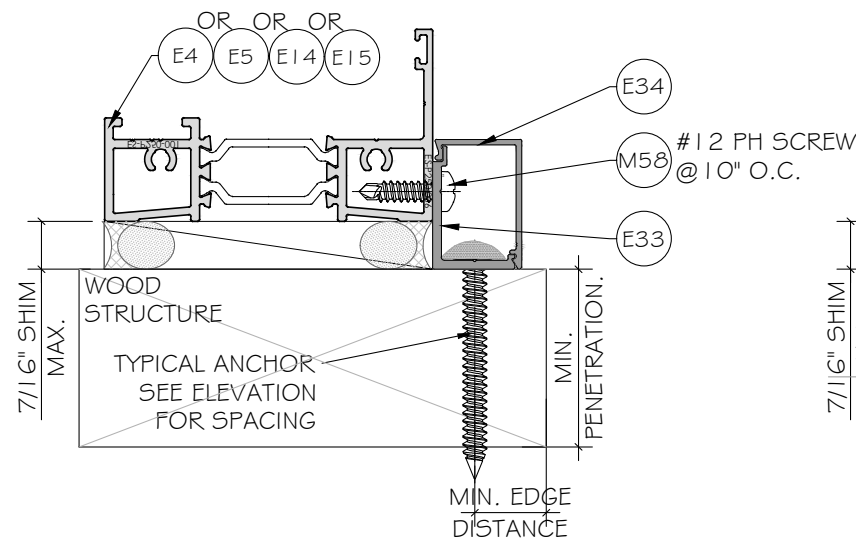
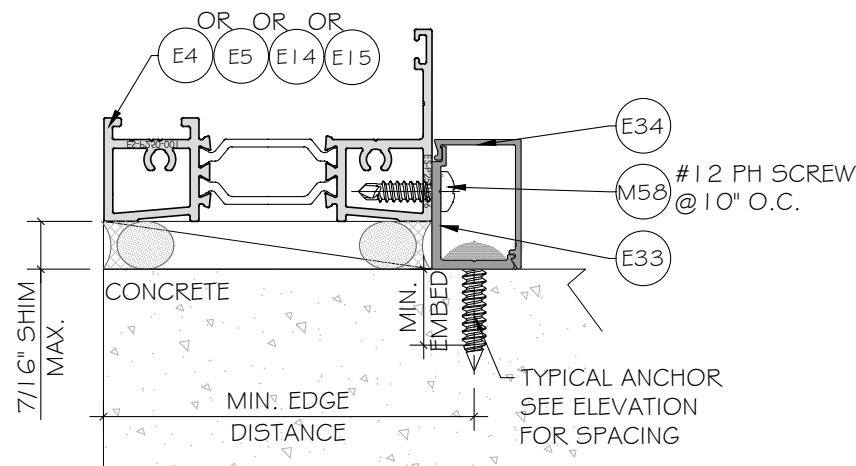
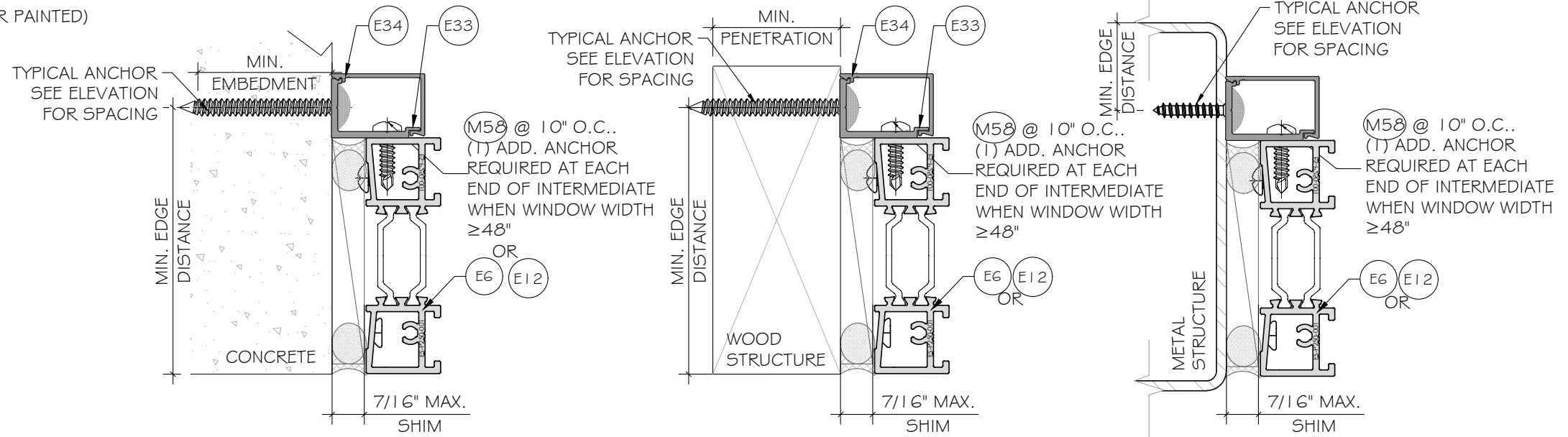
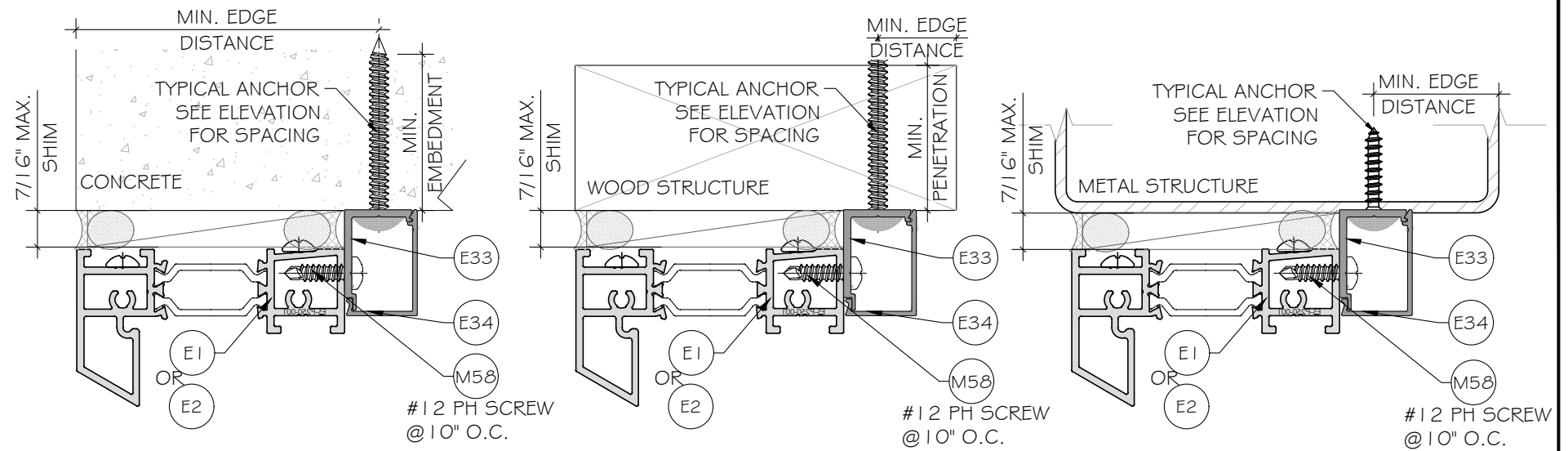
ANCHOR TYPE 'D' - 1/4" DIA. ULTRACON+ BY 'DEWALT'(Fu= 164KSI, Fy= 148KSI) INTO 2BY WOOD BUCKS (SG=0.55 MIN.) WITH 1 1/2" MIN. PENETRATION. OR THRU 1 BY WOOD BUCK INTO CONCRETE

ANCHOR TYPE 'E' - 1/4" DIA. ULTRACON+ BY 'DEWALT'(Fu= 164KSI, Fy= 148KSI) DIRECTLY INTO CONCRETE (fc=3KSI MIN. W/1 3/4" MIN. EMBEDMENT

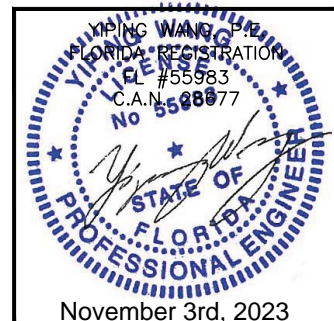
ANCHOR TYPE 'F' - 1/4" DIA. SEFL-DRILLING SCREWS, GRADE 5 (Fu= 120KSI, Fy=92KSI) INTO METAL STRUCTURES. (3) THREADS MIN. PENETRATION BEYOND METAL SUBSTRATE

ALUMINUM: 1/8" THK. MIN. (6063-T5, MIN)
 STEEL: 1/8" THK. MIN. (Fy=36KSI MIN)
 STEEL: 12GA STL STRUCTURE
 (STEEL IN CONTACT WITH ALUMINUM TO BE PLATED OR PAINTED)

TYPICAL EDGE DISTANCE INTO CONCRETE = 2 1/2" MIN.
 INTO WOOD = 1" MIN.
 INTO METAL STRUCTURE = 1/2" MIN.



FLORIDA APPROVAL:
FL#40522.2



MCY ENGINEERING, INC.
 GLAZING CONSULTANTS
 12781 MIRAMAR PKWY, STE. 301
 MIRAMAR, FL 33027 P: 305.271.0117
 www.MCYEngineering.com mcy@mcyengineering.com

ES-P300AWNING WINDOW - N.I.
E.S. WINDOWS, INC.
 10653 NE QUAYBRIDGE CT.
 MIAMI, FL 33138
 TEL. (305) 624-7775

| Rev. No. | Date | Drawn By | Description |
|-------------------------------|------------|----------|-------------|
| R2 | 10.31.2023 | JAMES | FBC UPDATE |
| Drawn Date | | Scale | |
| DRAWING NO. AD21-54 | | | |
| Sheet No. 5 OF 16 | | | |

ANCHOR OPTIONS:

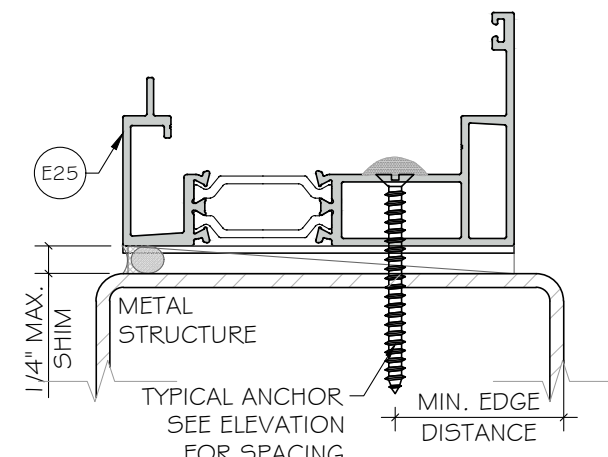
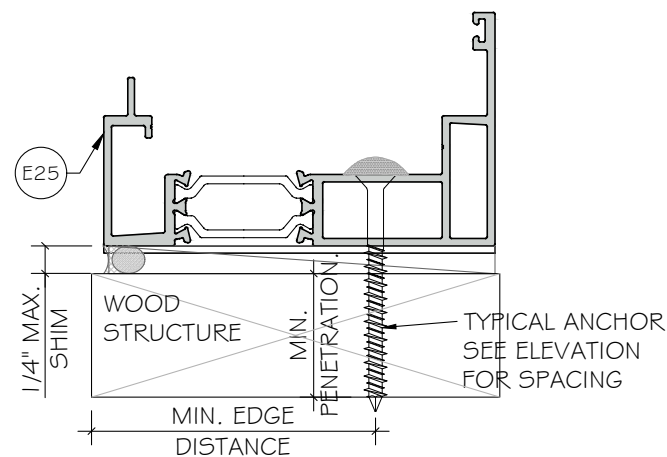
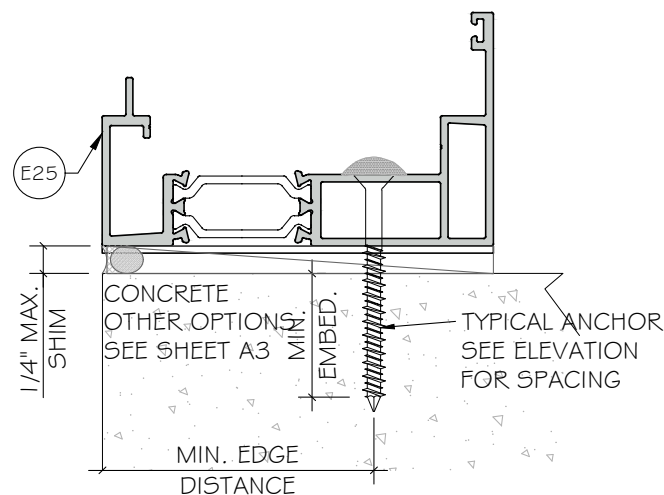
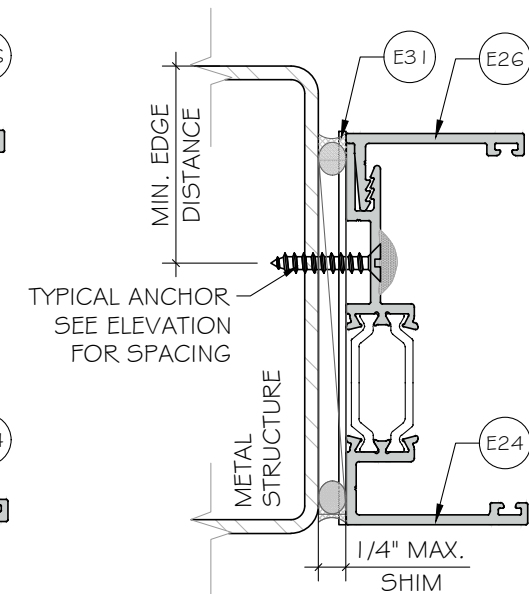
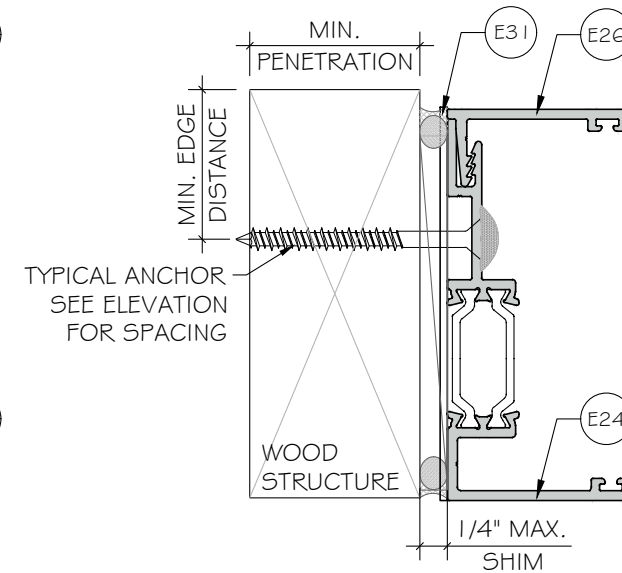
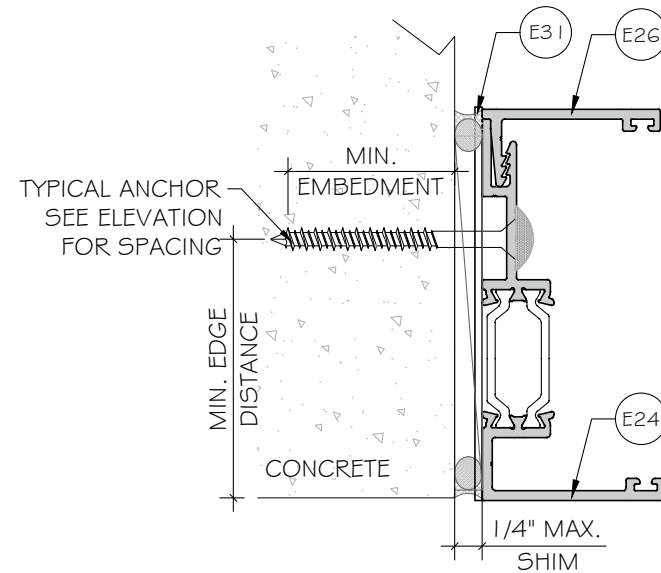
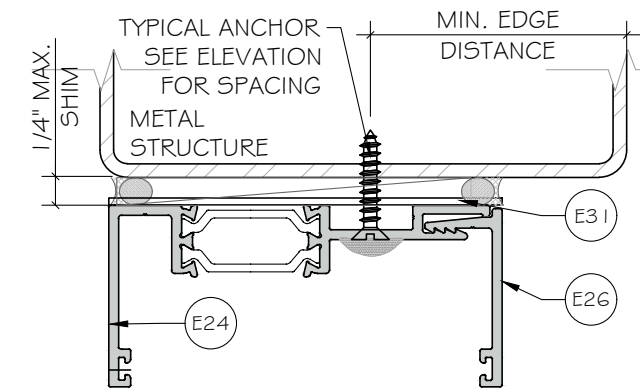
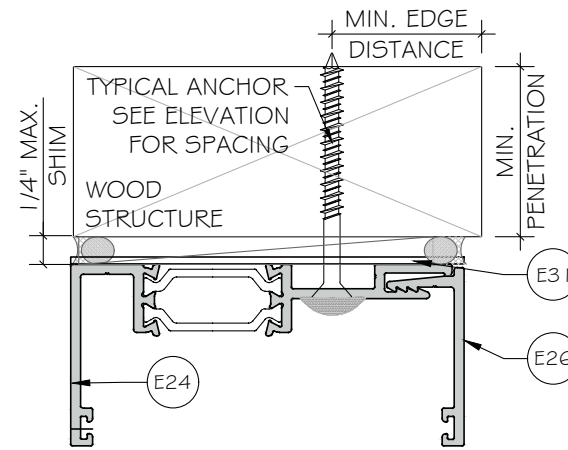
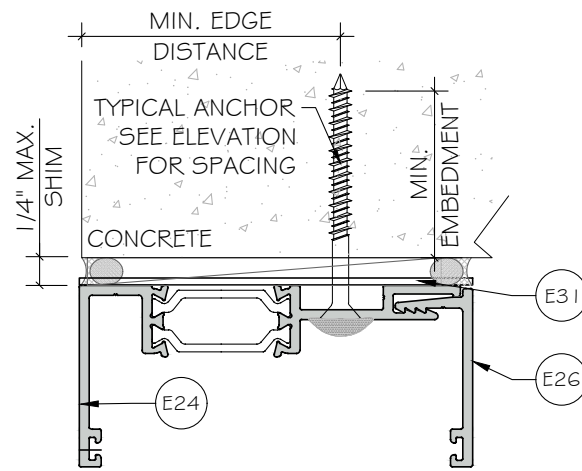
ANCHOR TYPE 'D' - 1/4" DIA. ULTRACON+ BY 'DEWALT'(Fu=164KSI, Fy=148KSI) INTO 2BY WOOD BUCKS (SG=0.55 MIN.) WITH 1 1/2" MIN. PENETRATION. OR THRU 1 BY WOOD BUCK INTO CONCRETE

ANCHOR TYPE 'E' - 1/4" DIA. ULTRACON+ BY 'DEWALT'(Fu=164KSI, Fy=148KSI) DIRECTLY INTO CONCRETE (fc=3KSI MIN. W/1 3/4" MIN. EMBEDMENT

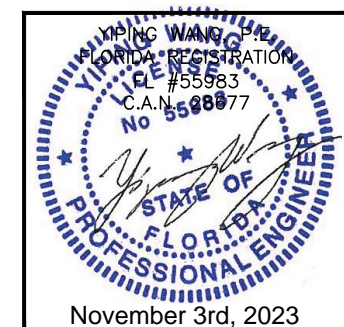
ANCHOR TYPE 'F' - 1/4" DIA. SEFL-DRILLING SCREWS, GRADE 5 (Fu=120KSI, Fy=92KSI) INTO METAL STRUCTURES. (3) THREADS MIN. PENETRATION BEYOND METAL SUBSTRATE

ALUMINUM: 1/8" THK. MIN. (6063-T5, MIN)
 STEEL: 1/8" THK. MIN. (Fy=36KSI MIN)
 STEEL: 12GA STL STRUCTURE
 (STEEL IN CONTACT WITH ALUMINUM TO BE PLATED OR PAINTED)

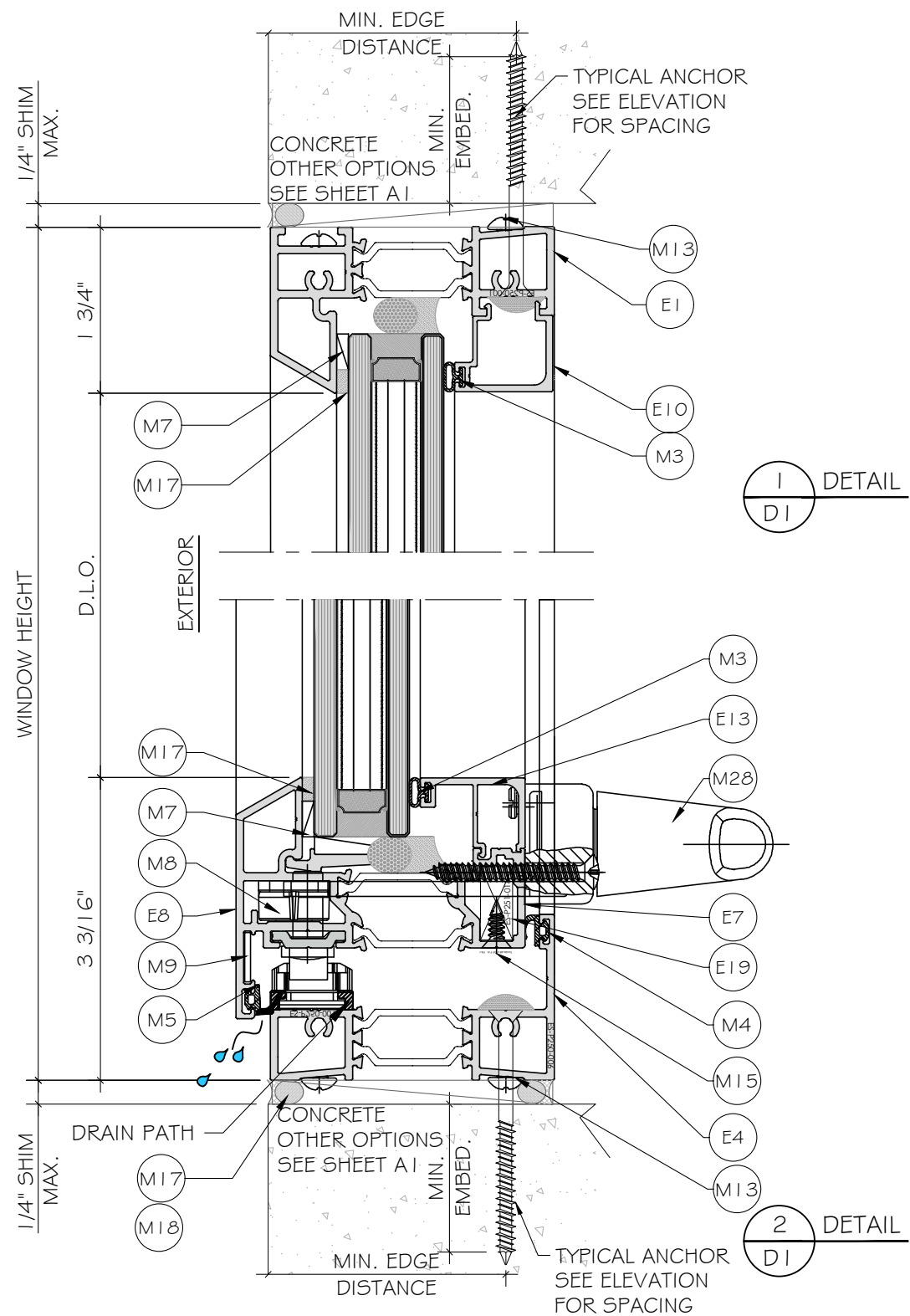
TYPICAL EDGE DISTANCE INTO CONCRETE = 2 1/2" MIN.
 INTO WOOD = 1" MIN.
 INTO METAL STRUCTURE = 1/2" MIN.



FLORIDA APPROVAL:
FL#40522.2

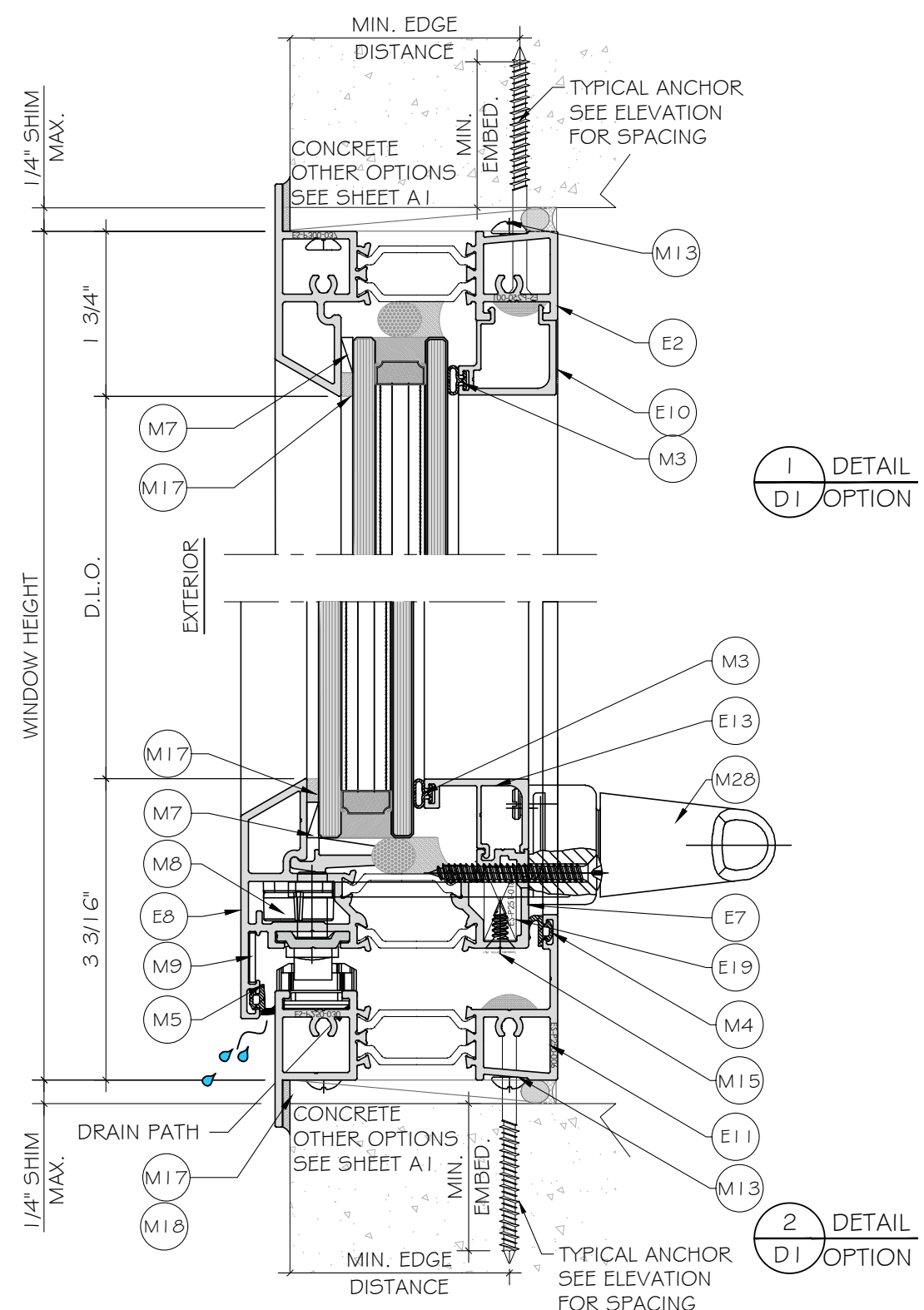


| Rev. No. | Date | Drawn By | Description |
|----------------|------------|----------|-------------|
| R2 | 10.31.2023 | JAMES | FBC UPDATE |
| Drawn Date | | Scale | |
| DRAWING NO. | | | |
| AD21-54 | | | |
| Sheet No. | | | |
| 6 OF 16 | | | |



1
D1 DETAIL

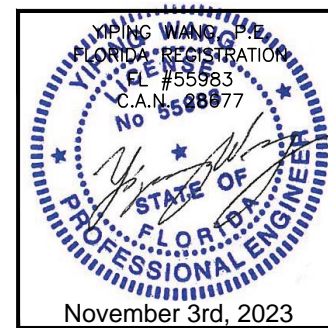
2
D1 DETAIL



1
D1 DETAIL
OPTION

2
D1 DETAIL
OPTION

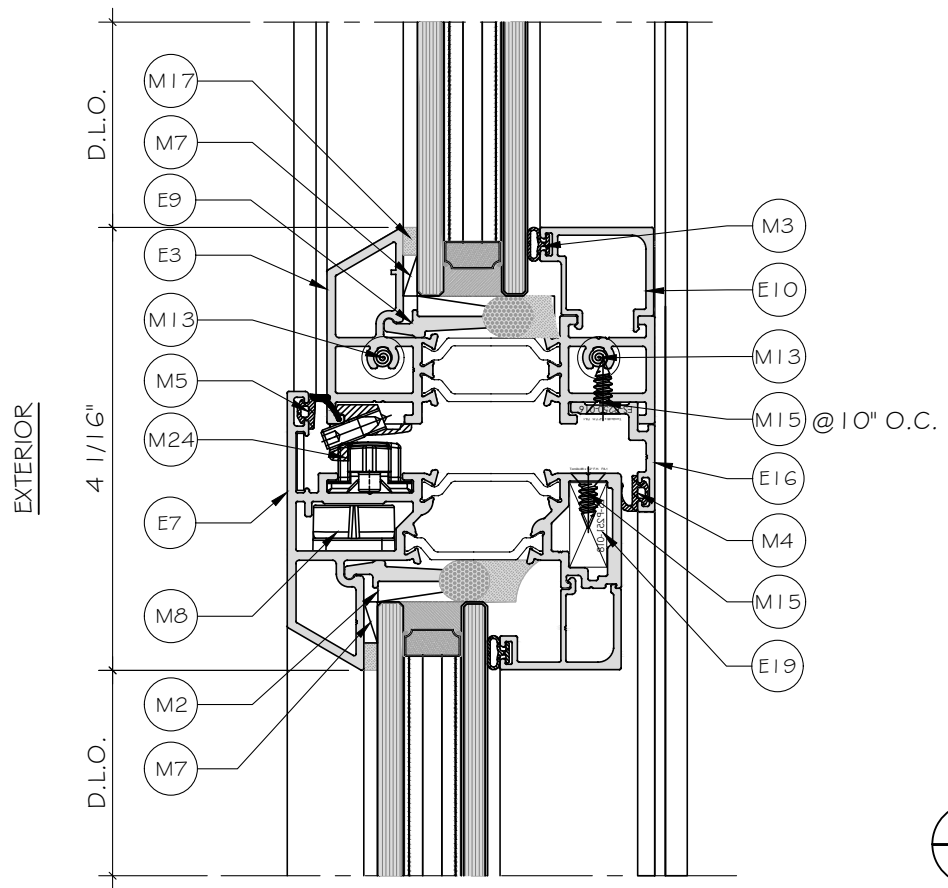
FLORIDA APPROVAL:
FL#40522.2



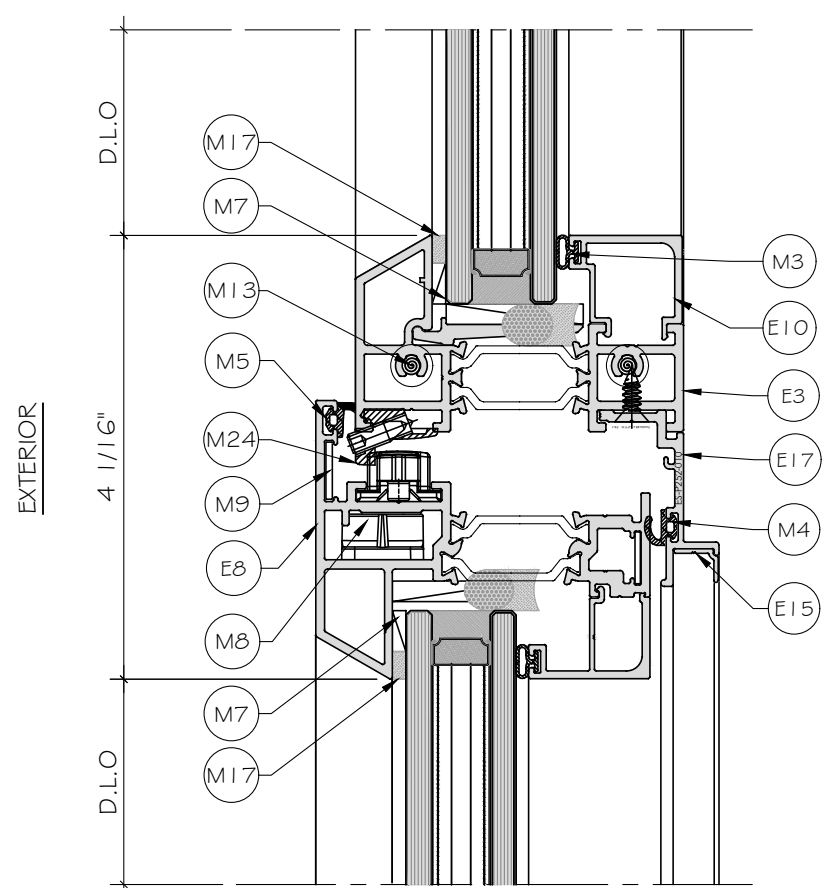
MCY ENGINEERING, INC.
GLAZING CONSULTANTS
12781 MIRAMAR PKWY, STE. 301
MIRAMAR, FL 33027 P: 305.271.0117
www.MCYEngineering.com mcy@mcyengineering.com

ES-P300AWNING WINDOW - N.I.
E.S. WINDOWS, INC.
10653 NE QUAYBRIDGE CT.
MIAMI, FL 33138
TEL. (305) 624-7775

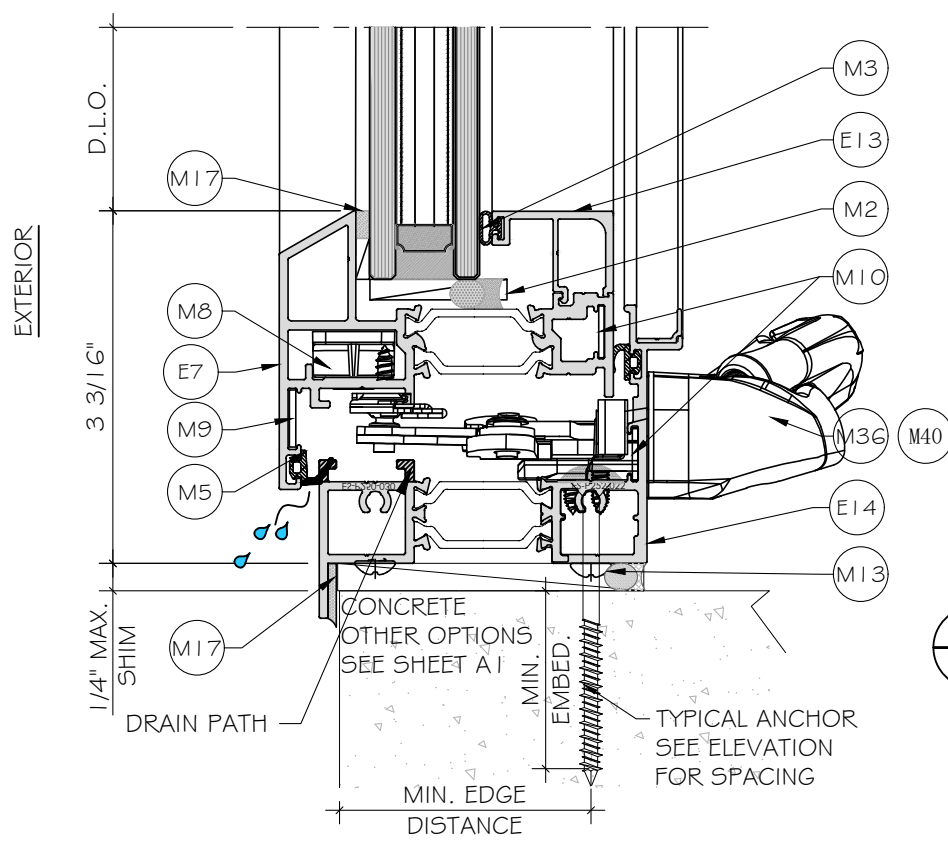
| Rev. No. | Date | Drawn By | Description |
|--------------------------|------------|----------|-------------|
| R2 | 10.31.2023 | JAMES | FBC UPDATE |
| Drawn Date 10.31.2023 | | Scale | |
| DRAWING NO. AD21-54 | | | |
| Sheet No. D1 | | | |
| 7 OF 16 | | | |



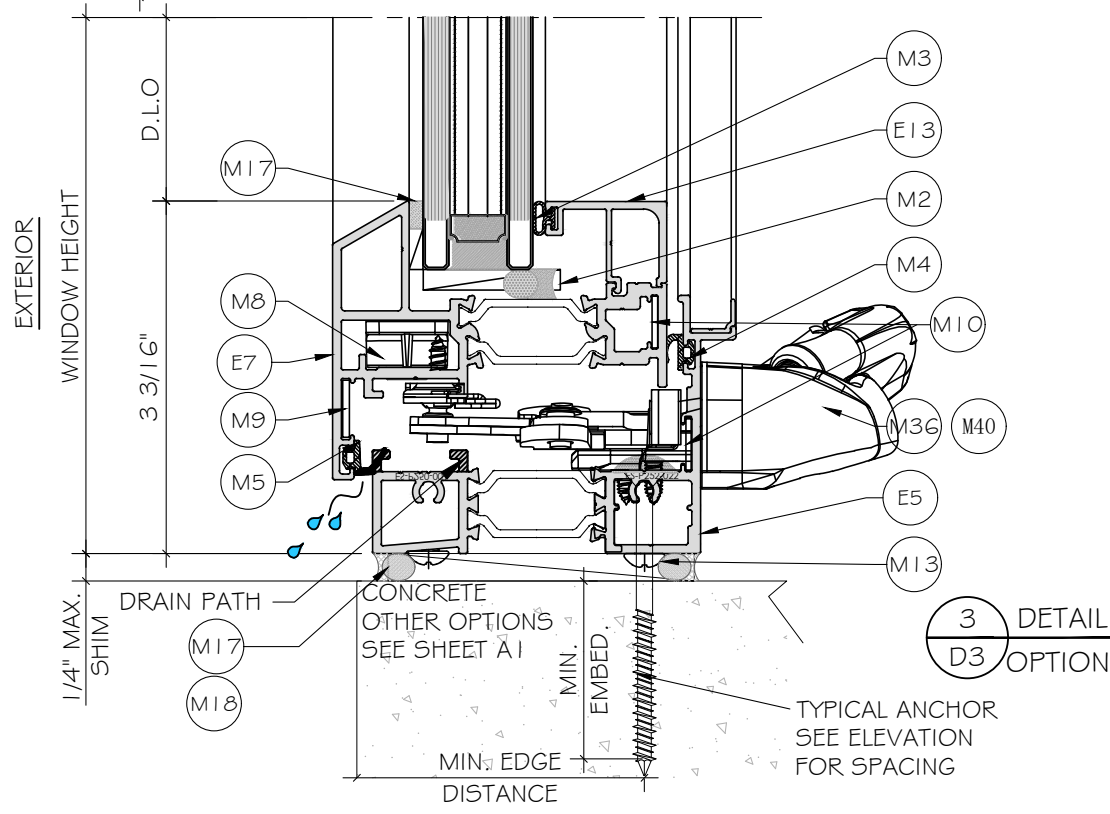
1
D3
DETAIL



2
D3
DETAIL

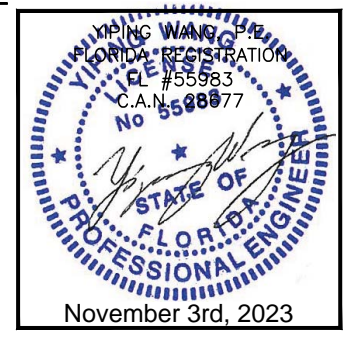


3
D3
DETAIL



3
D3
DETAIL
OPTION

FLORIDA APPROVAL:
FL#40522.2

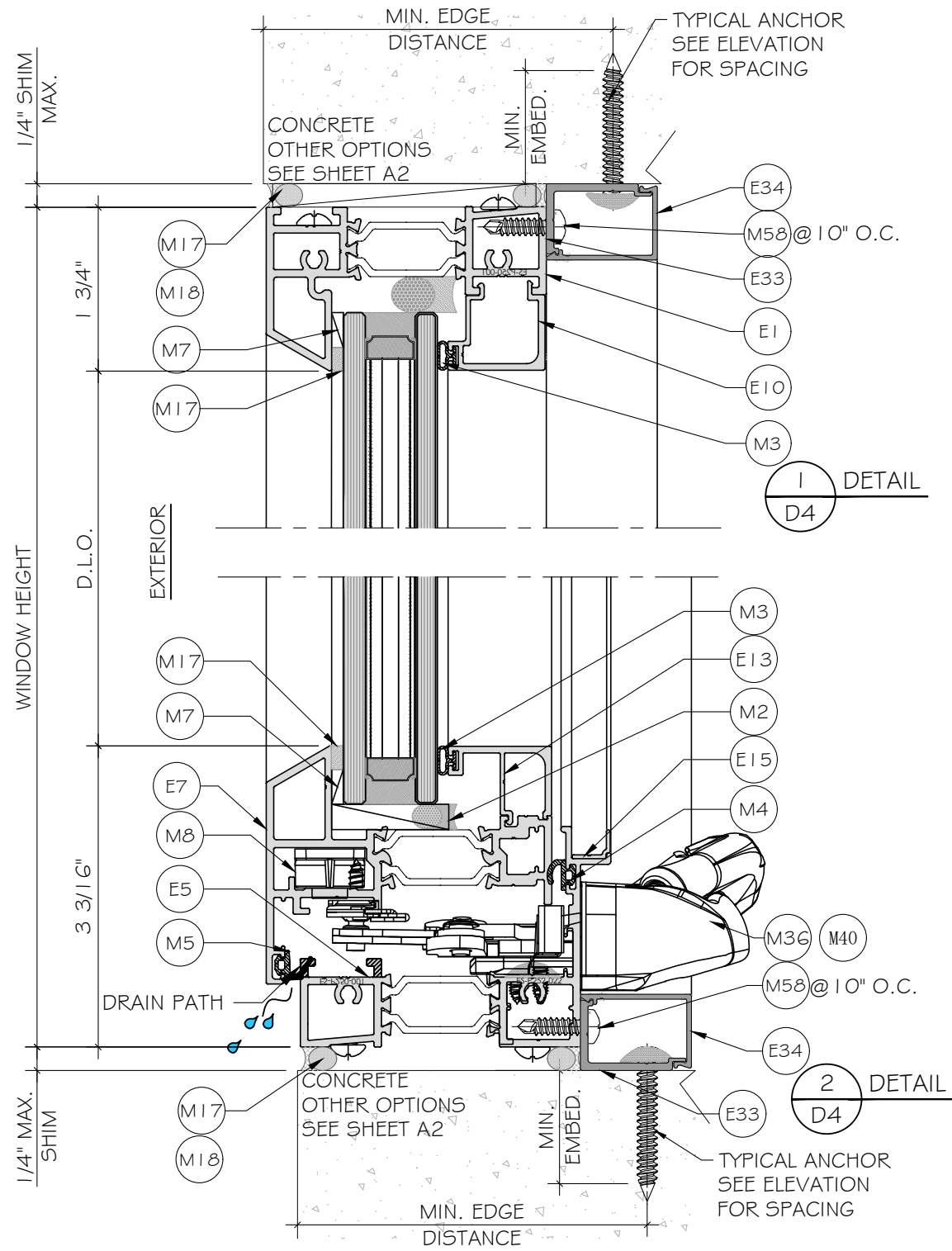


MCY ENGINEERING, INC.
GLAZING CONSULTANTS
12781 MIRAMAR PKWY, STE. 301
MIRAMAR, FL 33027 P: 305.271.0117
www.MCYEngineering.com mcy@mcyengineering.com

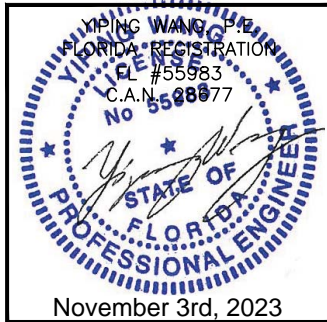
ES-P300AWNING WINDOW - N.I.
E.S. WINDOWS, INC.
10653 NE QUAYBRIDGE CT.
MIAMI, FL 33138
TEL. (305) 624-7775

| Rev. No. | Date | Drawn By | FBC UPDATE Description |
|----------|------------|----------|------------------------|
| R2 | 10.31.2023 | JAMES | |

Drawn Date: 10.31.2023 Scale:
DRAWING NO.: AD21-54
Sheet No.: 9 OF 16



FLORIDA APPROVAL:
FL#40522.2



MCY ENGINEERING, INC.
 GLAZING CONSULTANTS
 12781 MIRAMAR PKWY, STE. 301
 MIRAMAR, FL 33027 P: 305.271.0117
 www.MCYEngineering.com mcy@mcyengineering.com

ES-P300AWNING WINDOW - N.I.
 E.S.WINDOWS, INC.
 10653 NE QUAYBRIDGE CT.
 MIAMI, FL 33138
 TEL. (305) 624-7775

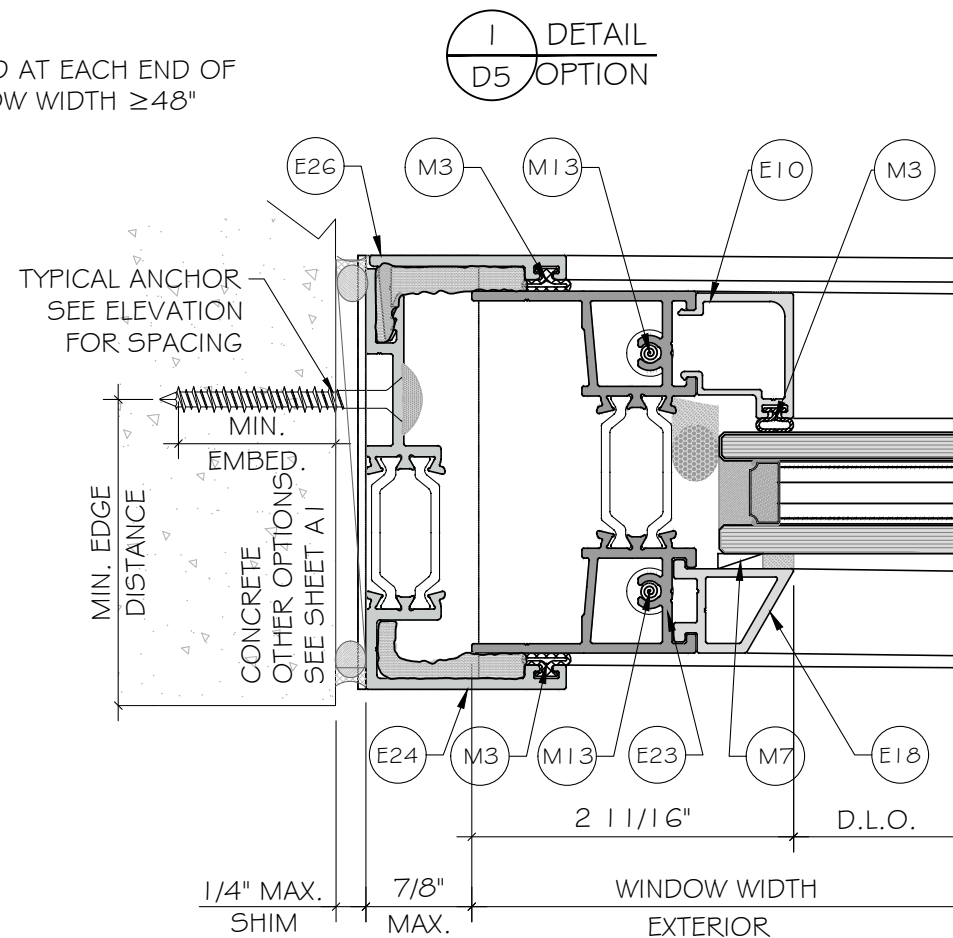
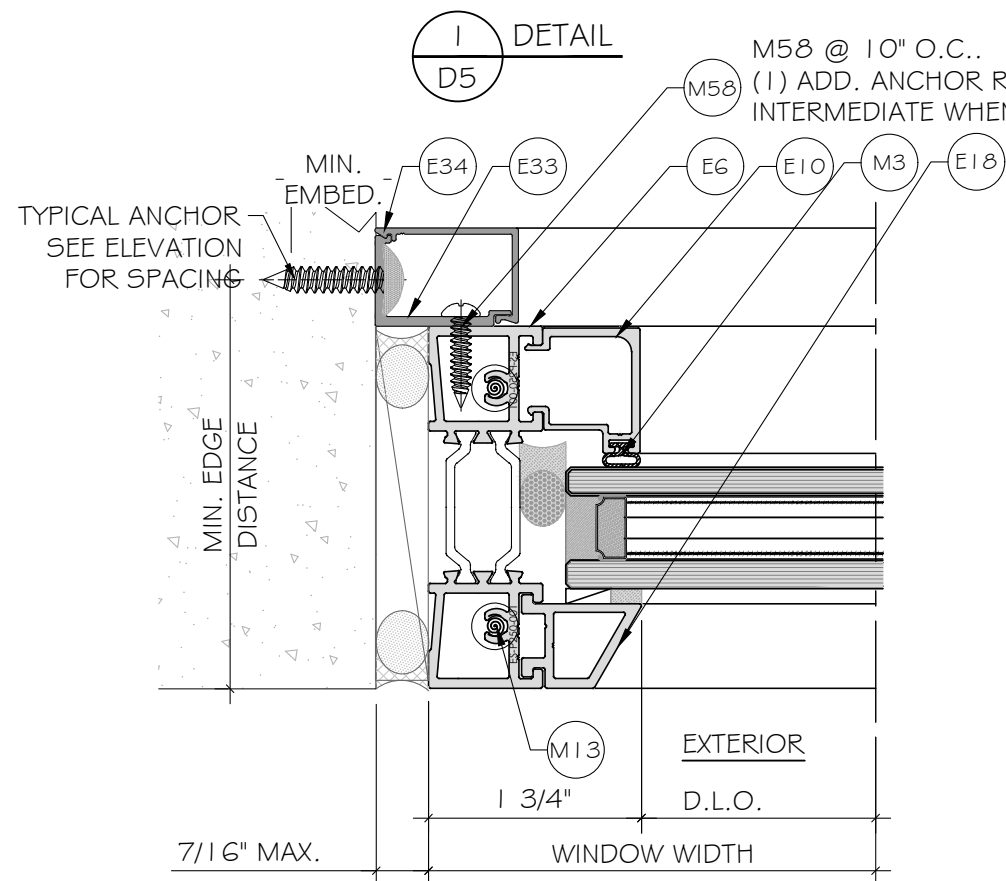
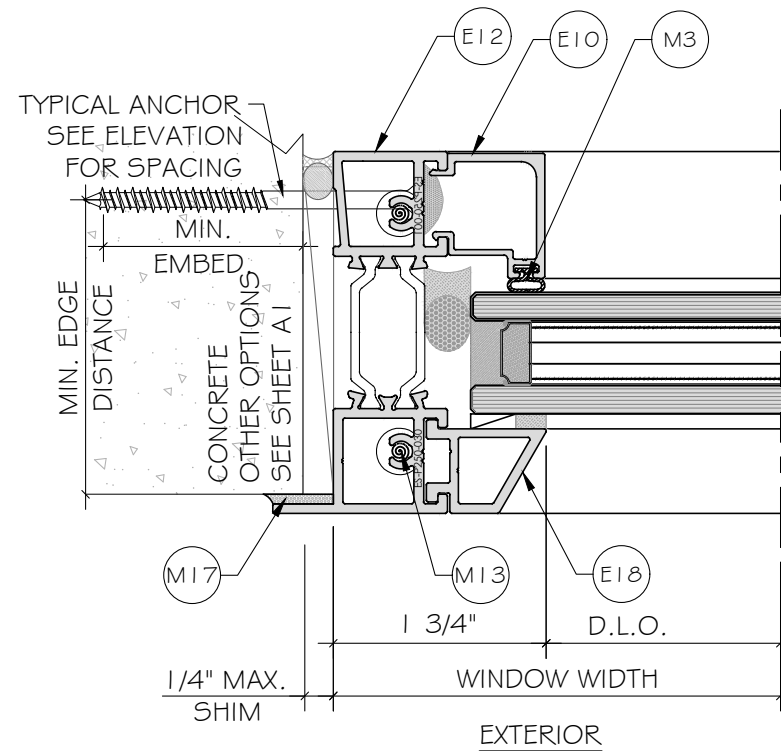
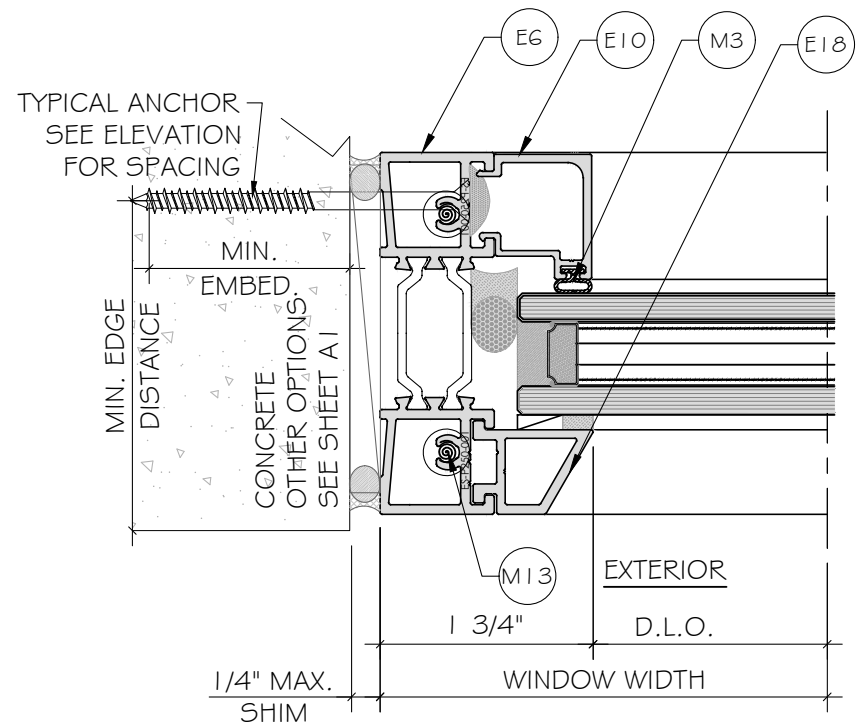
| Rev. No. | Date | Drawn By | Description |
|----------|------------|----------|-------------|
| R2 | 10.31.2023 | JAMES | FBC UPDATE |

Drawn Date: 10.31.2023 Scale:

DRAWING NO. **AD21-54**

Sheet No. **D4**

10 OF 16

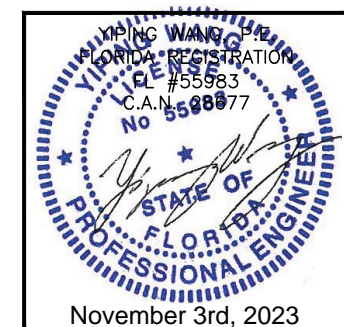


M58 @ 10" O.C..
(1) ADD. ANCHOR REQUIRED AT EACH END OF INTERMEDIATE WHEN WINDOW WIDTH ≥ 48"

2
D5
DETAIL

3
D5
DETAIL

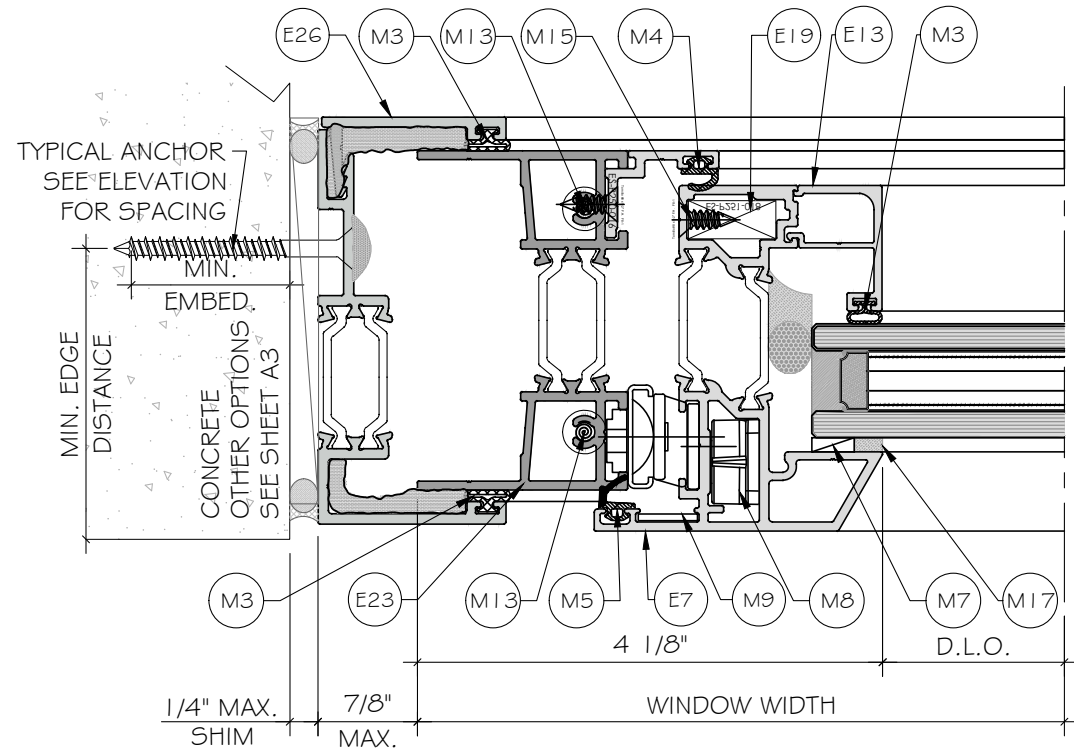
FLORIDA APPROVAL:
FL#40522.2



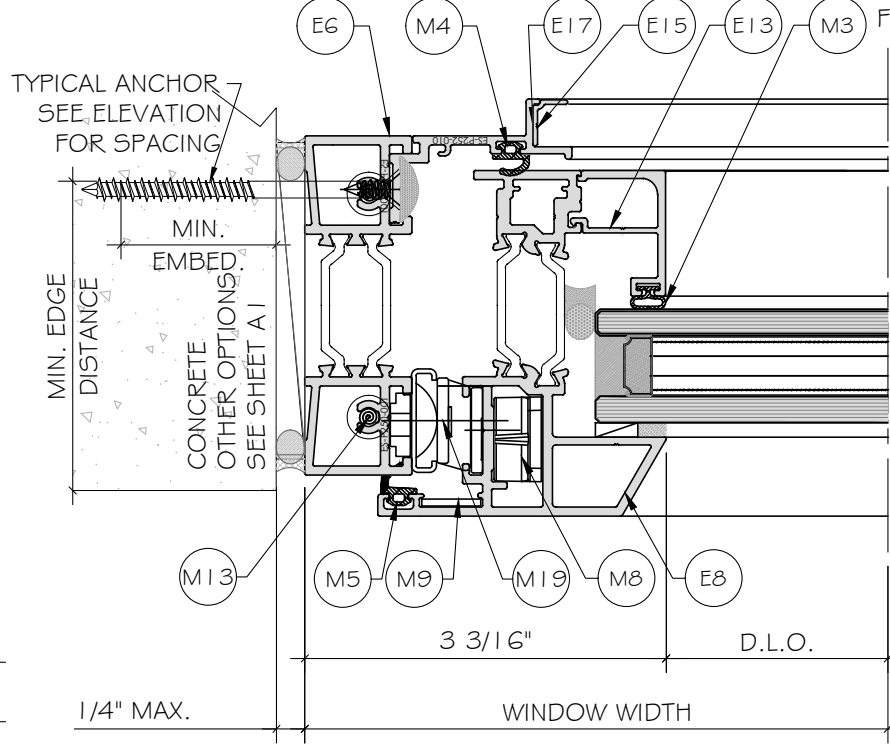
MCY ENGINEERING, INC.
GLAZING CONSULTANTS
12781 MIRAMAR PKWY, STE. 301
MIRAMAR, FL 33027 P: 305.271.0117
www.MCYEngineering.com mcy@mcyengineering.com

ES-P300AWNING WINDOW - N.I.
E.S. WINDOWS, INC.
10653 NE QUAYBRIDGE CT.
MIAMI, FL 33138
TEL. (305) 624-7775

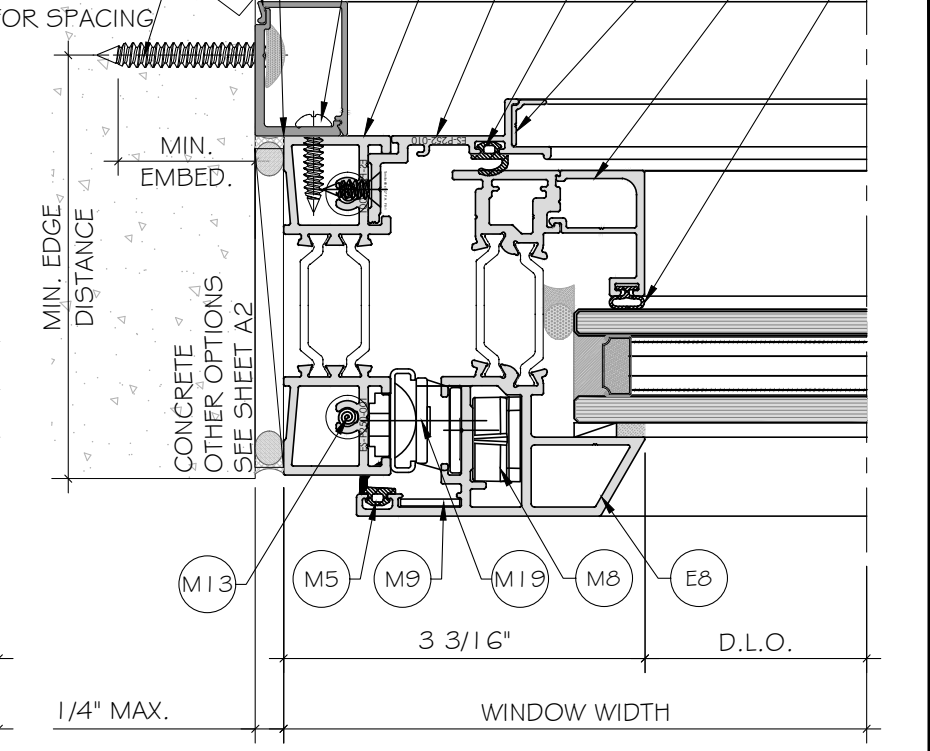
| Rev. No. | Date | Drawn By | FBC UPDATE | Description |
|--------------------------|------------|----------|------------|-------------|
| R2 | 10.31.2023 | JAMES | | |
| Drawn Date 10.31.2023 | | Scale | | |
| DRAWING NO. AD21-54 | | | | |
| Sheet No. D5 | | | | |
| 11 OF 16 | | | | |



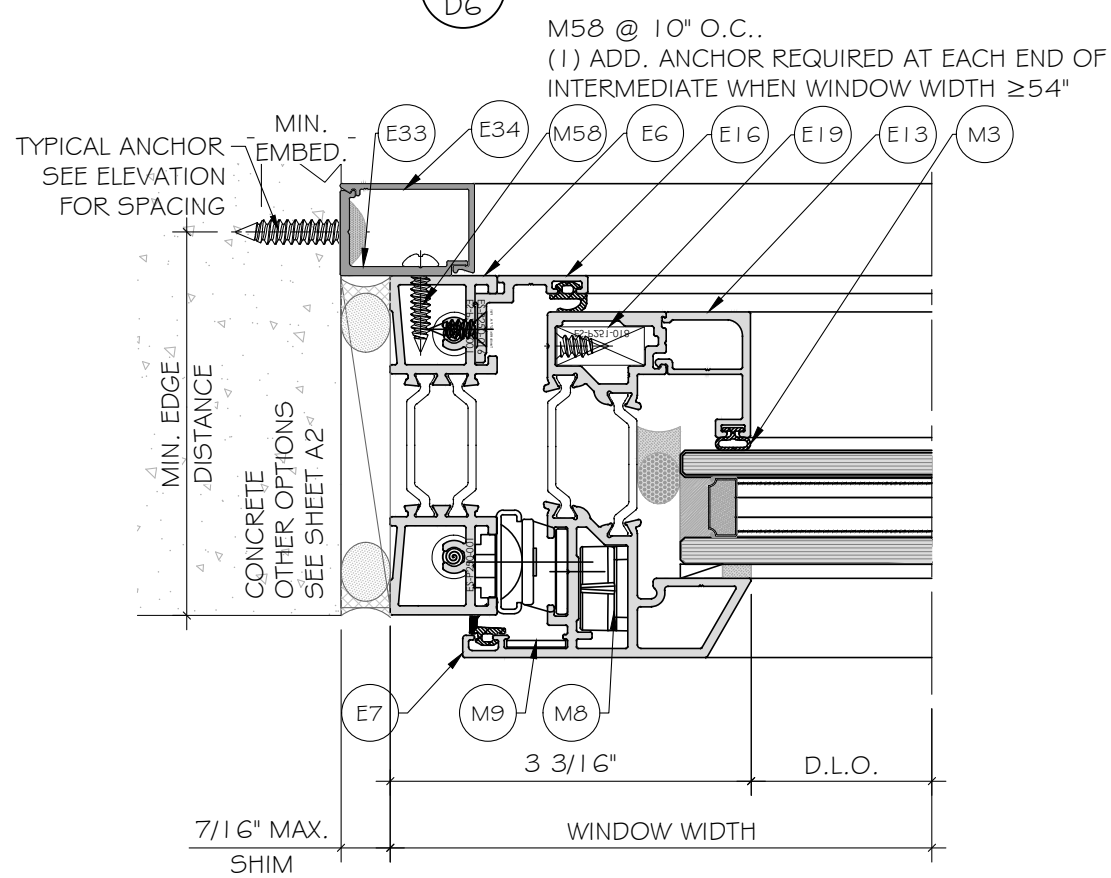
2
D6
DETAIL



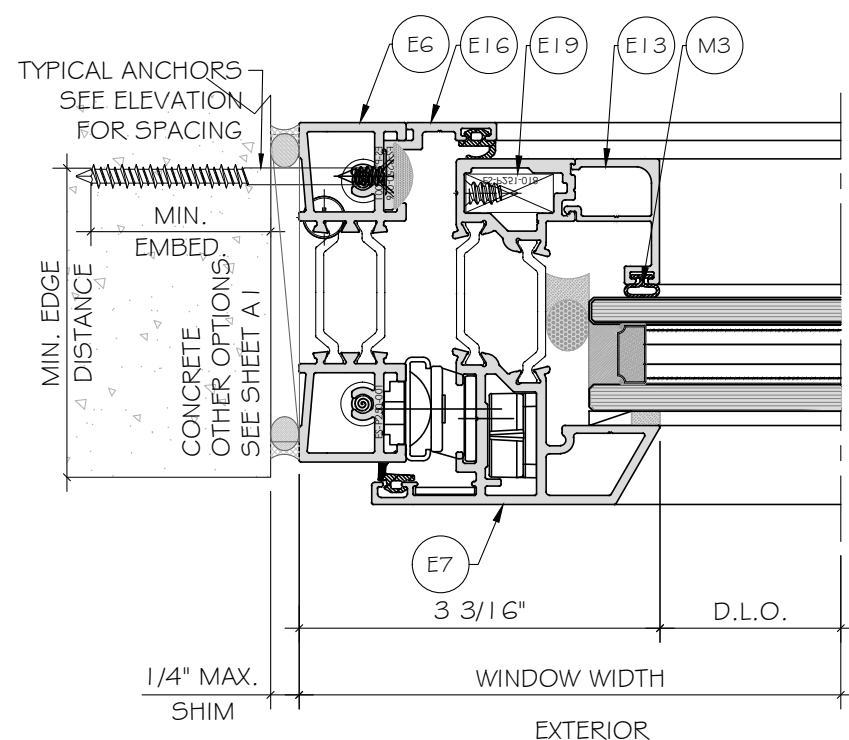
3
D6
DETAIL



4
D6
DETAIL



1
D6
DETAIL

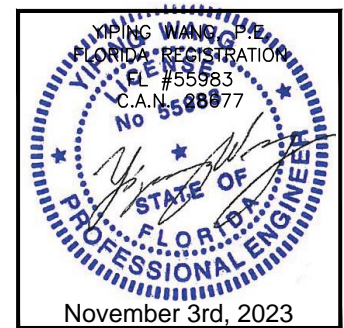


1
D6
DETAIL
OPTION

M58 @ 10" O.C..
(1) ADD. ANCHOR REQUIRED AT EACH END OF INTERMEDIATE WHEN WINDOW WIDTH ≥ 54"

M58 @ 10" O.C..
(1) ADD. ANCHOR REQUIRED AT EACH END OF INTERMEDIATE WHEN WINDOW WIDTH ≥ 54"

FLORIDA APPROVAL:
FL#40522.2



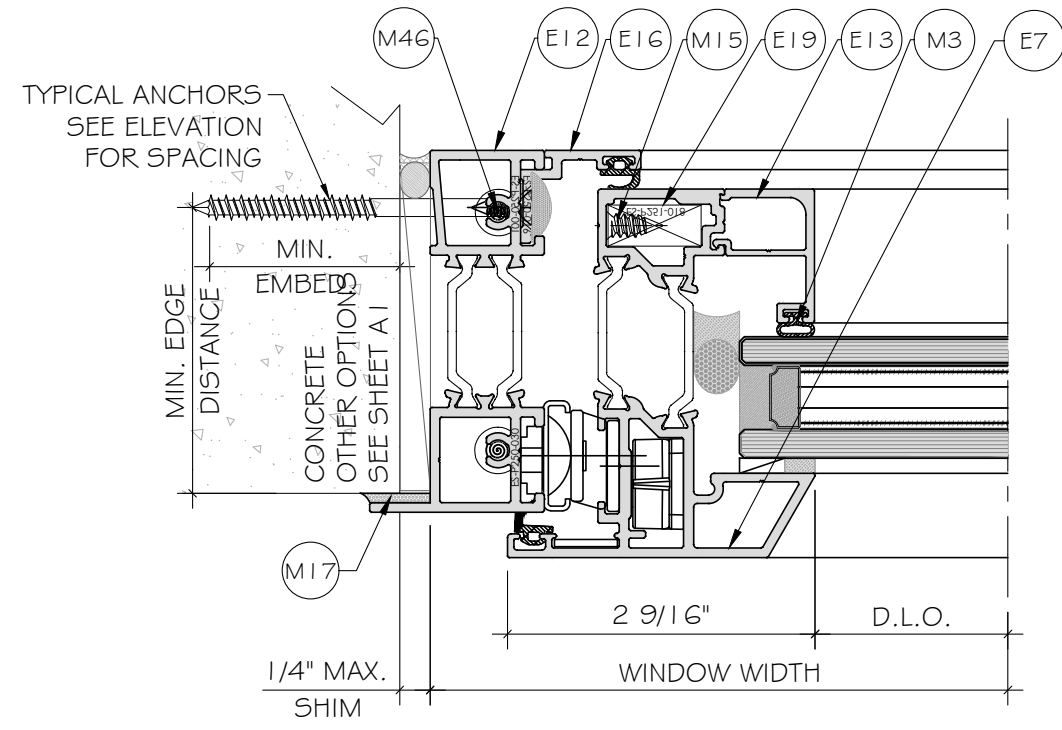
MCY ENGINEERING, INC.
GLAZING CONSULTANTS
12781 MIRAMAR PKWY, STE. 301
MIRAMAR, FL 33027
P: 305.271.0117
www.MCYEngineering.com mcy@mcyengineering.com

ES-P300AWNING WINDOW - N.I.
E.S. WINDOWS, INC.
10653 NE QUAYBRIDGE CT.
MIAMI, FL 33138
TEL: (305) 624-7775

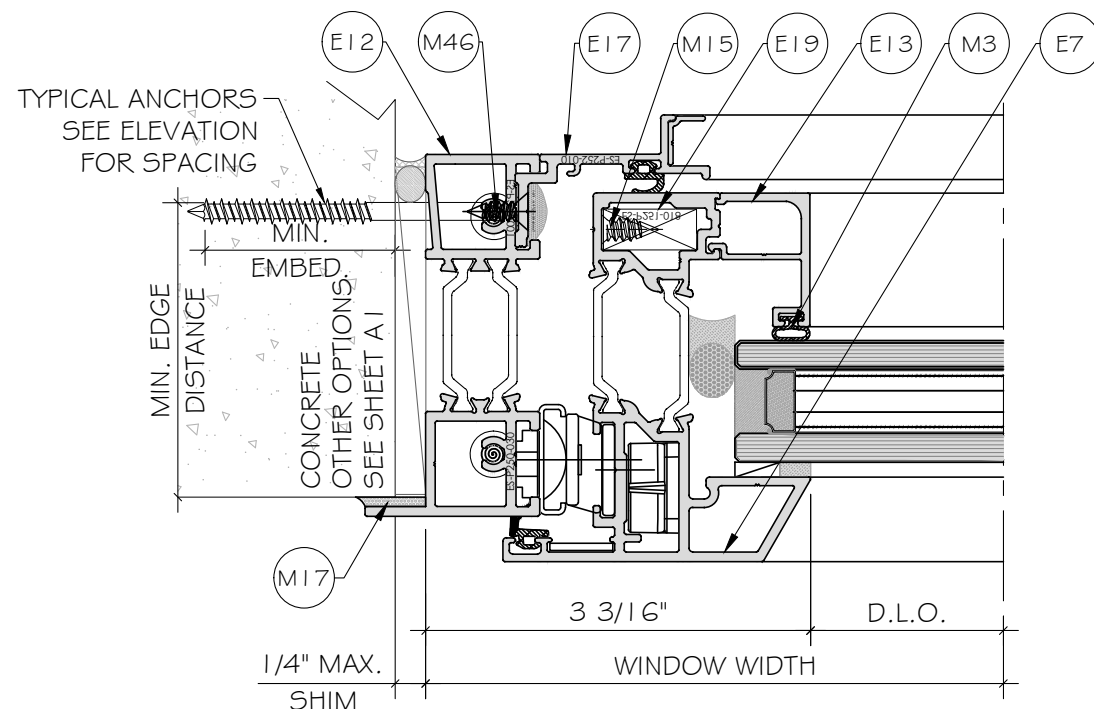
| Rev. No. | Date | Drawn By | Description |
|----------|------------|----------|-------------|
| R2 | 10.31.2023 | JAMES | FBC UPDATE |

Drawn Date: 10.31.2023
Scale:
DRAWING NO.: AD21-54

D6
Sheet No.: 12 OF 16



EXTERIOR
 I
 D7 DETAIL



EXTERIOR
 I
 D7 SCREEN OPTION

FLORIDA APPROVAL:
 FL#40522.2

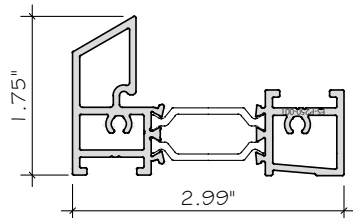
YIPING WANG
 FLORIDA REGISTRATION
 No. 55983
 C.A.N. 08877
 November 3rd, 2023

MCY ENGINEERING, INC.
 GLAZING CONSULTANTS
 12781 MIRAMAR PKWY, STE. 301
 MIRAMAR, FL 33027 P: 305.271.0117
 www.MCYEngineering.com mcy@mcyengineering.com

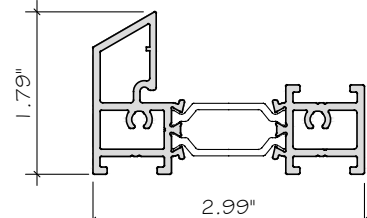
ES-P300AWNING WINDOW - N.I.
E.S. WINDOWS, INC.
 10653 NE QUAYBRIDGE CT.
 MIAMI, FL 33138
 TEL. (305) 624-7775

| Rev. No. | Date | Drawn By | Description |
|----------|------------|----------|-------------|
| R2 | 10.31.2023 | JAMES | FBC UPDATE |

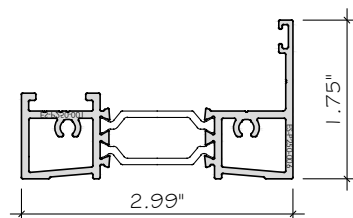
Drawn Date: 10.31.2023
 Scale:
 DRAWING NO.
AD21-54
 Sheet No.
D7
 13 OF 16



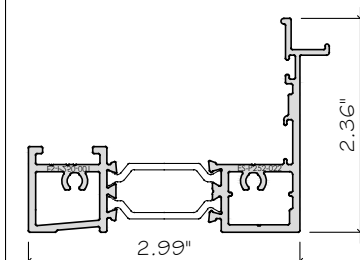
E1 FRAME FOR FIXED
ES-P300-501
ALUM. 6063-T6



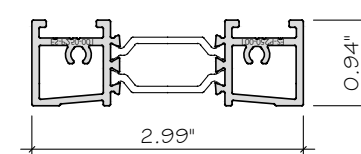
E3 INTERMEDIATE FOR FIXED/AWNING
ES-P300-503
ALUM. 6063-T6



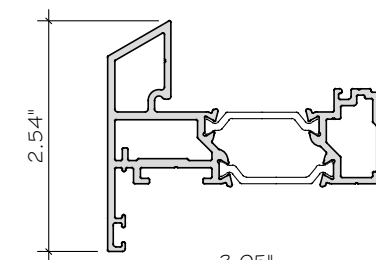
E4 FRAME FOR VENT
ES-P300-504
ALUM. 6063-T6



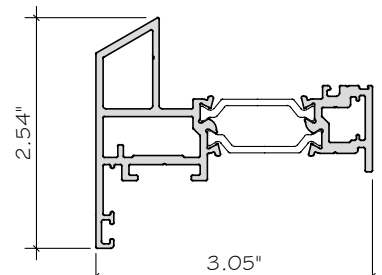
E5 FRAME FOR VENT
ES-P300-505
ALUM. 6063-T6



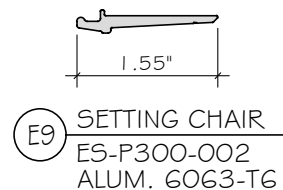
E6 JAMB FOR FIXED/AWNING
ES-P300-506
ALUM. 6063-T6



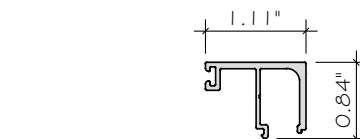
E7 SASH
ES-P300-507
ALUM. 6063-T6



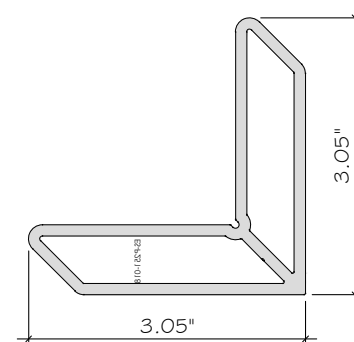
E8 SASH (SCREEN)
ES-P300-508
ALUM. 6063-T6



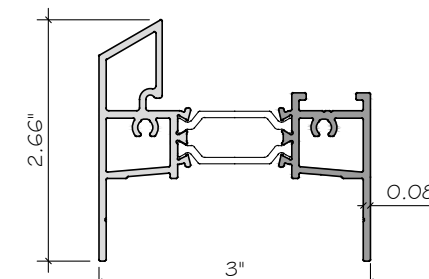
E9 SETTING CHAIR
ES-P300-002
ALUM. 6063-T6



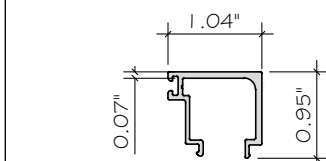
E13 NON IMPACT GLASS STOP @ SASH
ES-P300-014
ALUM. 6063-T5



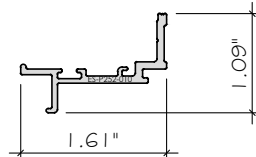
E19 CORNER JOINT
ES-P251-018
ALUM. 6063-T6



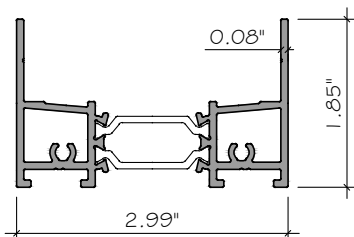
E20 FIXED WINDOW HEAD/JAMB FOR RECEPTOR
ES-P300-513
ALUM. 6063-T6



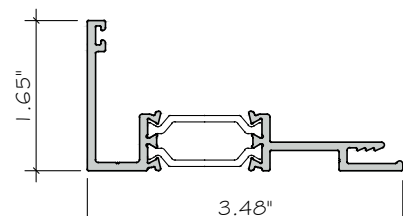
E10 NON IMPACT GLASS STOP @ FIXED
ES-P300-506
ALUM. 6063-T6



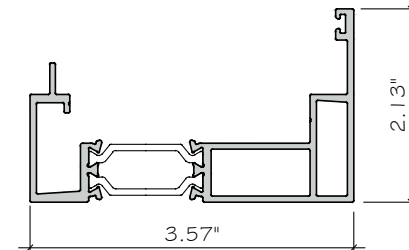
E17 FRAME ADAPTOR FOR VENT (SCREEN)
ES-P252-010
ALUM. 6063-T6



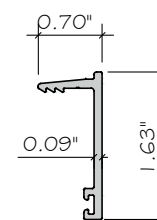
E23 FIXED/AWNING JAMB FOR RECEPTOR
ES-P300-522
ALUM. 6063-T6



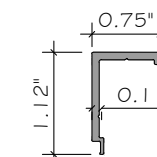
E24 RECEPTOR HEAD/JAMB
ES-P300-523
ALUM. 6063-T6



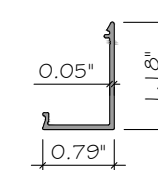
E25 RECEPTOR SILL
ES-P300-524
ALUM. 6063-T6



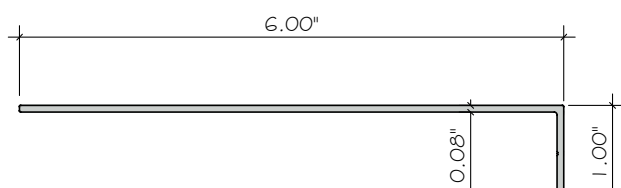
E26 RECEPTOR STOP
ES-P300-021
ALUM. 6063-T6



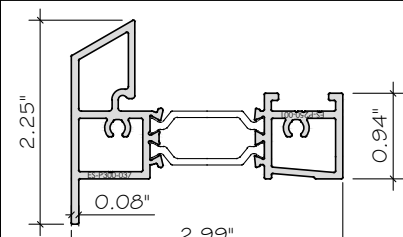
E33 STRAP ANCHOR
ES-P300-006
ALUM. 6063-T5



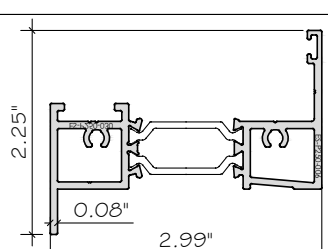
E34 STRAP ANCHOR COVER
ES-P300-007
ALUM. 6063-T5



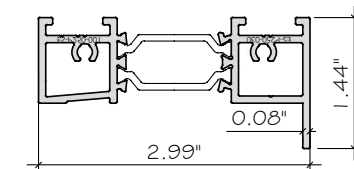
E31 END DAM
ES-CF-001
ALUM. 6063-T5



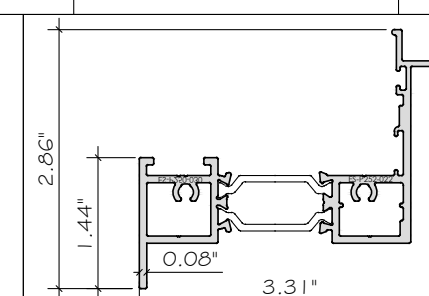
E2 FRAME FOR FIXED
STANDARD WITH FLANGE
ES-P300-534
ALUM. 6063-T6



E11 FRAME FOR LEVER
HANDLE WITH FLANGE
ES-P300-531
ALUM. 6063-T6

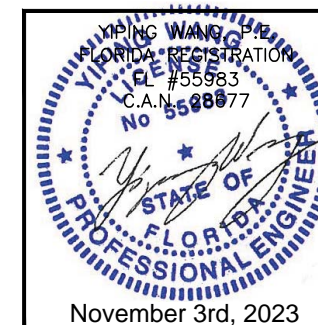


E12 JAMB FOR FIXED/AWNING
WITH FLANGE
ES-P300-533
ALUM. 6063-T6



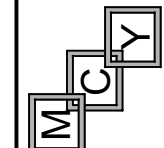
E14 JAMB FOR ROTO-OPERATOR
WITH FLANGE
ES-P300-532
ALUM. 6063-T6

FLORIDA APPROVAL:
FL#40522.2



ES-P300AWNING WINDOW - N.I.

E.S. WINDOWS, INC.
10653 NE QUAYBRIDGE CT.
MIAMI, FL 33138
TEL. (305) 624-7775



MCY ENGINEERING, INC.
GLAZING CONSULTANTS
12781 MIRAMAR PKWY, STE. 301
MIRAMAR, FL 33027 P: 305.271.0117
www.MCYEngineering.com mcy@mcyengineering.com

| Rev. No. | Date | Drawn By | FBC Update | Description |
|----------|------------|----------|------------|-------------|
| R2 | 10.31.2023 | JAMES | | |

Drawn Date: 10.31.2023

DRAWING NO. AD21-54

PART

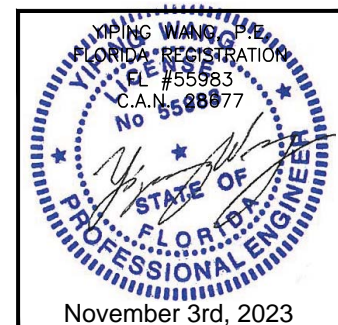
Sheet No.

14 OF 16

| MATERIAL LIST | | | |
|---------------|-------------|--------------------------------------|------------------|
| CODE | PART | DESCRIPTION | MATERIAL |
| E1 | ES-P300-501 | FRAME FOR FIXED | ALUMINUM 6063-T6 |
| E2 | ES-P300-534 | FRAME FOR FIXED STANDARD WITH FLANGE | ALUMINUM 6063-T6 |
| E3 | ES-P300-503 | INTERMEDIATE FOR FIXED AWNING | ALUMINUM 6063-T6 |
| E4 | ES-P300-504 | FRAME FOR VENT | ALUMINUM 6063-T6 |
| E5 | ES-P300-505 | FRAME FOR VENT (SCREEN) | ALUMINUM 6063-T6 |
| E6 | ES-P300-506 | JAMB FOR FIXED AWNING | ALUMINUM 6063-T6 |
| E7 | ES-P300-507 | SASH | ALUMINUM 6063-T6 |
| E8 | ES-P300-508 | SASH (SCREEN) | ALUMINUM 6063-T6 |
| E9 | ES-P300-002 | SETTING CHAIR | ALUMINUM 6063-T6 |
| E10 | ES-P300-003 | NON IMPACT GLASS STOP @ FIXED | ALUMINUM 6063-T6 |
| E11 | ES-P300-531 | FRAME FOR LEVER HANDLE WITH FLANGE | ALUMINUM 6063-T6 |
| E12 | ES-P300-533 | JAMB FOR FIXED AWNING WITH FLANGE | ALUMINUM 6063-T6 |
| E13 | ES-P300-014 | NON IMPACT GLASS STOP @ SASH | ALUMINUM 6063-T5 |
| E14 | ES-P300-532 | JAMB FOR ROTO-OPERADOR WITH FLANGE | ALUMINUM 6063-T6 |
| E15 | ES-5020 | SCREEN HOLDER | ALUMINUM 6063-T5 |
| E17 | ES-P252-010 | FRAME ADAPTOR FOR VENT (SCREEN) | ALUMINUM 6063-T6 |
| E18 | ES-P300-018 | FRONT FRAME ADAPTOR | ALUMINUM 6063-T6 |
| E19 | ES-P251-018 | CORNER JOINT | ALUMINUM 6063-T6 |
| E20 | ES-P300-513 | FIXED WINDOW HEAD/JAMB FOR RECEPTOR | ALUMINUM 6063-T6 |
| E23 | ES-P300-522 | FIXED AWNING JAMB FOR RECEPTOR | ALUMINUM 6063-T6 |
| E24 | ES-P300-523 | RECEPTOR HEAD/JAMB | ALUMINUM 6063-T6 |
| E25 | ES-P300-524 | RECEPTOR SILL | ALUMINUM 6063-T6 |
| E26 | ES-P300-021 | RECEPTOR STOP | ALUMINUM 6063-T6 |
| E30 | ES-EUR-001 | EUROBAR | ALUMINUM 6063-T6 |
| E31 | ES-CF-001 | END DAM | ALUMINUM 6063-T5 |

| MATERIAL LIST | | | |
|---------------|-------------------|---|-------------------------------|
| CODE | PART | DESCRIPTION | MATERIAL |
| M1 | ES-SD451-G04 | WEDGE GASKET @ GLASS PERIMETER | SILICONE 60±3 SHORE A |
| M2 | ES-4520-B02A | SETTING BLOCK | SILICONE 80±3 SHORE A |
| M3 | ES-5008A | BUBBLE GASKET @ GLAZING BEAD & RECEPTOR | SILICONE 65±5 SHORE A |
| M4 | ES-PI312T-GO3A | INTERNAL FLIPPER GASKET @ FRAME PERIMETER | SILICONE |
| M5 | ES-EL300-GO1 | EXTERNAL FLIPPER GASKET @ FRAME PERIMETER | EPDM CO-EXTRUDED 65±5 SHORE A |
| M6 | ES-7530-G06 | TONGUE GASKET @3 PIECE MULLION | EPDM 60 DUROMETER |
| M7 | 1/8" x 1/2" TAPE | DOUBLE FACE TAPE | POLYURETHENE |
| M8 | CORNER JOINT 0423 | CORNER JOINT | DIE CAST ALUMINUM |
| M9 | HC-200-MO1 | CORNER LOCK FOR SASH | ALUMINUM |
| M10 | PJS-43-SS | CORNER KEY, PJS-43-SS | STAINLESS STEEL |
| M11 | WPSA-N1 | RETICULATED FOAM 30PPI 3/4" x 3/4" x 2" | OPEN CELL FOAM |
| M12 | 1222-XXX | WEEP HOLE COVER | NYLON 6 |
| M13 | #10 x 1/4" PH | ASSEMBLY SCREW | STAINLESS STEEL |
| M14 | #8 x 5/8" PH | SCREW FOR GLASS STOP | STAINLESS STEEL |
| M15 | #8 x 1/2" FH | SCREW FOR CORNER KEY ES-P251-018 | STAINLESS STEEL |
| M16 | DOWSIL 983 | STRUCTURAL SILICONE | SILICONE |
| M17 | DOWSIL 791 | SEALANT SILICONE | SILICONE |
| M18 | BACKER ROD 1/2" | BACKER ROD OPEN CELL @ GLASS PERIMETER | POLYURETHENE |

FLORIDA APPROVAL:
FL#40522.2



MCY ENGINEERING, INC.
GLAZING CONSULTANTS
12781 MIRAMAR PKWY, STE. 301
MIRAMAR, FL 33027 P: 305.271.0117
www.MCYEngineering.com mcy@mcyengineering.com

ES-P300AWNING WINDOW - N.I.
E.S.WINDOWS, INC.
10653 NE QUAYBRIDGE CT.
MIAMI, FL 33138
TEL: (305) 624-7775

| | |
|-------------|-------|
| Drawn Date | Scale |
| 10.31.2023 | |
| DRAWING NO. | |
| AD21-54 | |
| BOM | |
| Sheet No. | |
| 15 OF 16 | |

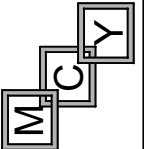
MATERIAL LIST

| CODE | PART | DESCRIPTION | MATERIAL |
|------|--|---|----------------------|
| M19 | SERIE 5800 4 BAR HINGE | FOR AWNING | STAINLESS STEEL |
| M20 | SHIM 1529-XX | ALUMINUM | STAINLESS STEEL |
| M21 | #10x1/2" P.H. | SCREW FOR HINGE | STAINLESS STEEL |
| M22 | 1208 MAGICUBE CONCEALED HINGES | FOR AWNING | STAINLESS STEEL |
| M24 | SNUBBER | SNBB KIT MV LM 4200-D VS/BS TS BI 857052 | STAINLESS STEEL |
| M25 | LIMIT DEVICE 20J0023 | FOR AWNING | STAINLESS STEEL |
| M27 | #10x1/2" F.H. PIN IN - HEX | SECURITY SCREW FOR LIMIT DEVICE | STAINLESS STEEL |
| M28 | HANDLE SI LINE LM DA | LEVER HANDLE | DIE CAST ALUMINUM |
| M29 | FLANGE SLEEVE 899915 | FLANGE SLEEVE | STAINLESS STEEL |
| M30 | SCREW M5X6-A2 701.9002.5015.A0 | SCREW FOR LEVER HANDLE | STAINLESS STEEL |
| M31 | HANDLE PIN MFKL0020-000010 | HANDLE PIN | STAINLESS STEEL |
| M32 | HANDLE FORK 72 mm | FOR HANDLE | DIE CAST ALUMINUM |
| M33 | #8x1/2" F.H. | SCREW FOR LEVER HANDLE | STAINLESS STEEL |
| M34 | LOCK PLATE 1315-S4 | FOR LOCKING SYSTEM | DIE CAST ALUMINUM |
| M35 | EURO GROOVE KEEPER 1303-260 | FOR LOCKING SYSTEM | DIE CAST ALUMINUM |
| M36 | CO11-0453-085 OPERATOR NARROW | AWNING OPERATOR | STAINLESS STEEL |
| M37 | CO11-0169-085 or CO11-170-085 HEAVY OPERATOR | 14,5" HD OPERATOR | STAINLESS STEEL |
| M38 | CO11-2202 OPERATOR SPACER 2.4 MM | FOR AWNING | ABS |
| M40 | CO11-0606-XXX RH OPERATOR HANDLE | FOR AWNING & CASEMENT | ABS |

MATERIAL LIST

| CODE | PART | DESCRIPTION | MATERIAL |
|------|---|---|---------------------------------------|
| M43 | CO11-0510 AWNING ST/ST BRACKET | FOR AWNING | STAINLESS STEEL |
| M44 | CO01-4000 OPERATOR CLAMP WASHER | FOR OPERATOR (x2) | STAINLESS STEEL |
| M45 | #8-32 x 1/2" FH | OPERATOR CLAMP WASHER (x1) | STAINLESS STEEL |
| M46 | #8 x 1/2" FH | SCREW FOR BRACKET & TRACK | STAINLESS STEEL |
| M47 | #8 x 3/4" PH | SCREW FOR OPERATOR | STAINLESS STEEL |
| M48 | CLO1-0475 | LOCKING HANDLE | DIE CAST ZINC ALLOY |
| M49 | CLO2-00XX | STEEL BAR | STAINLESS STEEL |
| M50 | CLO2-2045-XXX | SNAP ON COVER | COPOLYMER / DIE CAST ZINC ALLOY |
| M51 | CLO2-1020-XXX CLO2-1021-XXX | SNAP ON HANDLE | DIE CAST ALUMINUM |
| M52 | CO01-4001 LOCKINGPOINT CLAMP WASHER | FOR LOCKING HANDLE (x2) | STAINLESS STEEL |
| M53 | CLO2-2059-00B | STRIKER | ABS |
| M54 | CLO2-2060-00B | LOCKING BAR GUIDE | ABS |
| M55 | #8 x 3/4" PH | STRIKER (x2) LOCKING BAR GUIDE (x2) OPERATOR (x6) | STAINLESS STEEL |
| M56 | #8-32 x 1/2" PH | MULTIPOINT CLAMP WASHER (x1) | STAINLESS STEEL |
| M58 | #12-1/2" PH | FOR STRAP ANCHOR | STAINLESS STEEL |

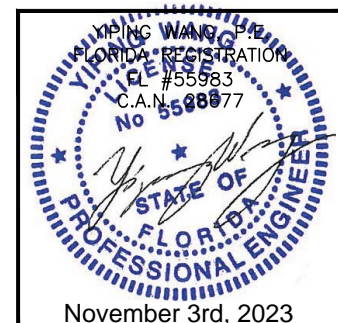
MCY ENGINEERING, INC.
GLAZING CONSULTANTS
12781 MIRAMAR PKWY, STE. 301
MIRAMAR, FL 33027 P: 305.271.0117
www.MCYEngineering.com mcy@mcyengineering.com



ES-P300AWNING WINDOW - N.I.

E.S.WINDOWS, INC.
10653 NE QUAYBRIDGE CT.
MIAMI, FL 33138
TEL: (305) 624-7775

FLORIDA APPROVAL:
FL#40522.2



| Rev. No. | Date | Drawn By | Description |
|----------|------------|----------|-------------|
| R2 | 10.31.2023 | JAMES | FBC UPDATE |

| | |
|-------------|-------|
| Drawn Date | Scale |
| 10.31.2023 | |
| DRAWING NO. | |
| AD21-54 | |
| BOM | |
| Sheet No. | |
| 16 OF 16 | |