

PICTURE WINDOW - NON-IMPACT

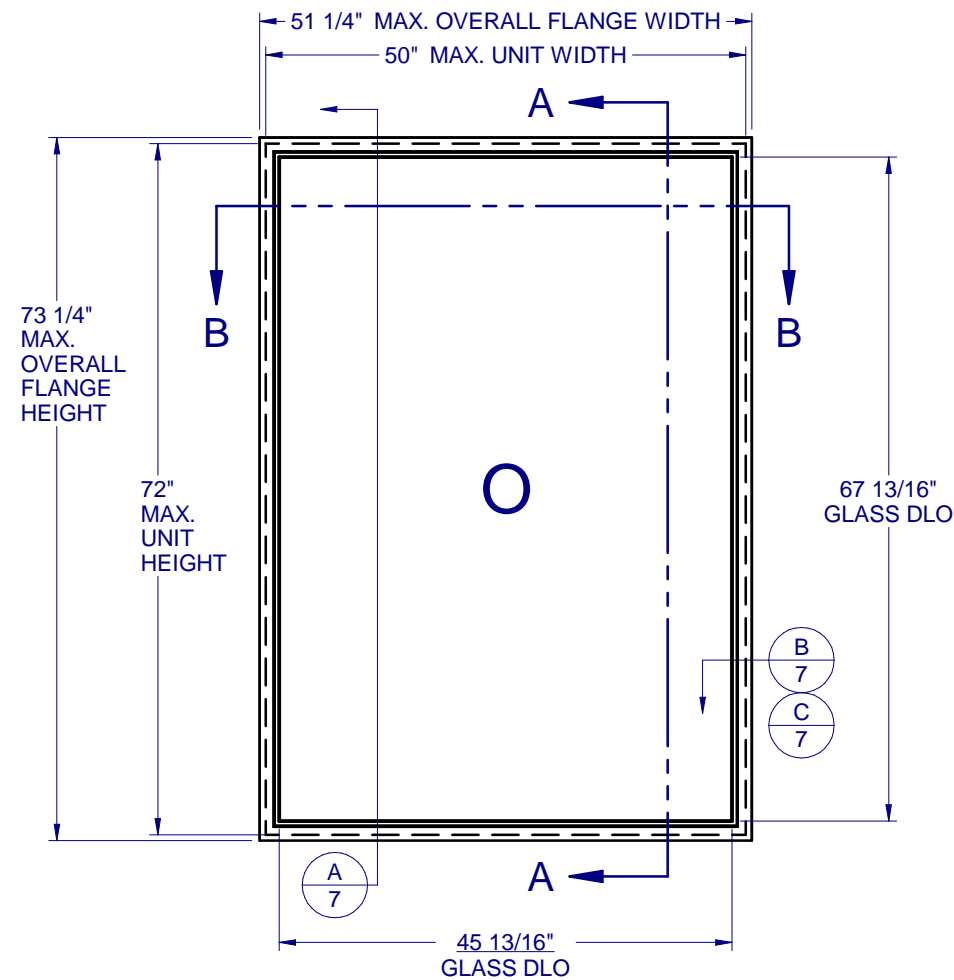


TABLE OF CONTENTS

GENERAL NOTES & ELEVATIONS.....1
 ARCHITECTURAL SHAPES.....2
 DP CHART & GLAZING DETAILS.....3
 SECTION VIEWS.....4
 BOM & EXTRUSIONS.....5
 ANCHOR SCHEDULE & NOTES.....6
 INSTALLATION DETAILS.....7

| MAX. UNIT SIZE | DESIGN PRESSURE RATING | IMPACT RATING |
|----------------|---|---------------|
| 50" x 72" | SEE COMPARATIVE ANALYSIS CHART, SHEET 3 | NONE |

GENERAL NOTES:

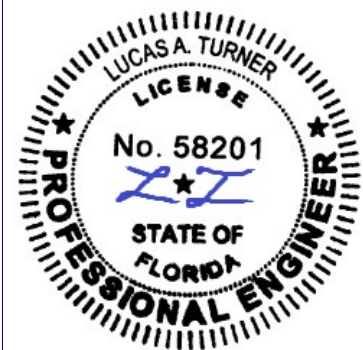
1. THE PRODUCT SHOWN HEREIN IS DESIGNED AND MANUFACTURED TO COMPLY WITH THE FLORIDA BUILDING CODE (FBC), CURRENT EDITION AND IS RATED FOR USE IN THE HIGH VELOCITY HURRICANE ZONE (HVHZ).
2. GLAZING OPTIONS: (SEE SHEET 3)
3. CONFIGURATIONS: "O". ARCHITECTURAL SHAPES INCLUDE, BUT ARE NOT LIMITED TO, THOSE SHOWN ON SHEET 2.
4. DESIGN PRESSURE RATING (SEE SHEET 3):
 -NEGATIVE DESIGN LOADS BASED ON, TESTED PRESSURE AND GLASS TABLES ASTM E-1300-04e01/09.
 -POSITIVE DESIGN LOADS BASED ON, TESTED PRESSURE, WATER INFILTRATION TEST PRESSURE AND GLASS TABLES ASTM E-1300-04e01/09.
5. ANCHORAGE: THE 33 1/3% STRESS INCREASE HAS NOT BEEN USED IN THE DESIGN OF THIS PRODUCT. SEE SHEET 7 FOR ANCHOR DETAILS. WINDLOAD DURATION FACTOR Cd=1.6 WAS USED FOR WOOD ANCHOR CALCULATIONS.
6. NOT APPROVED FOR IMPACT RESISTANCE. IMPACT PROTECTIVE SYSTEM IS REQUIRED IN WIND BORNE DEBRIS REGION.
7. ALL FRAMES FULLY WELDED.
8. SERIES / MODEL DESIGNATION PW-8150.
9. THE DESIGNATION X AND O STAND FOR THE FOLLOWING:
 O = FIXED SASH
10. SECTION CALLOUTS APPLY TO ALL ELEVATIONS IN A SIMILAR LOCATION.



1900 SW 44TH AVE.
 Ocala, Florida 34474
 WWW.CWS.CC

8150 PVC PICTURE WINDOW NON-IMPACT

PROPRIETARY AND CONFIDENTIAL
 THE INFORMATION CONTAINED IN THIS DRAWING IS THE SOLE PROPERTY OF CUSTOM WINDOW SYSTEMS, INC. ANY REPRODUCTION IN PART OR AS A WHOLE WITHOUT THE WRITTEN PERMISSION OF CUSTOM WINDOW SYSTEMS, INC IS PROHIBITED.



8/05/2020

LUCAS A. TURNER, P.E.
 FL PE # 58201
 2428 Old Natchez Trc Trl
 Camden, TN 38320
 PH. 941-380-1574

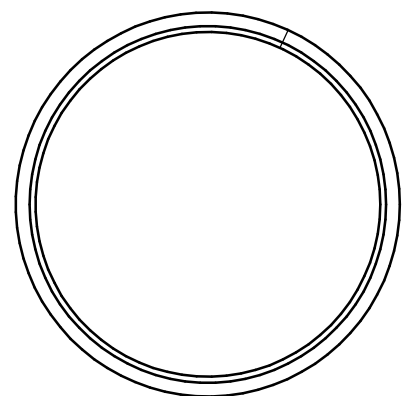
SHEET DESCRIPTION:

GENERAL NOTES AND ELEVATIONS

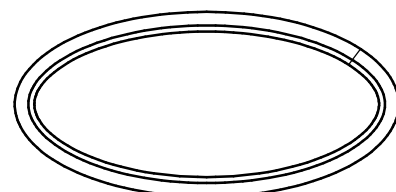
| | |
|-------------------|-------------------|
| DRAWN BY: AAJ | DATE: 10/29/11 |
| DWG #: CWS-506 | REV.: D |
| SCALE: 1:20 | SHEET 1 OF 7 |

**8150 PVC
PICTURE WINDOW
NON-IMPACT**

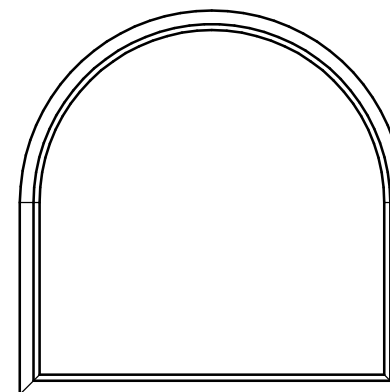
PROPRIETARY AND CONFIDENTIAL
THE INFORMATION CONTAINED IN
THIS DRAWING IS THE SOLE
PROPERTY OF CUSTOM WINDOW
SYSTEMS, INC. ANY
REPRODUCTION IN PART OR AS A
WHOLE WITHOUT THE WRITTEN
PERMISSION OF CUSTOM WINDOW
SYSTEMS, INC IS PROHIBITED.



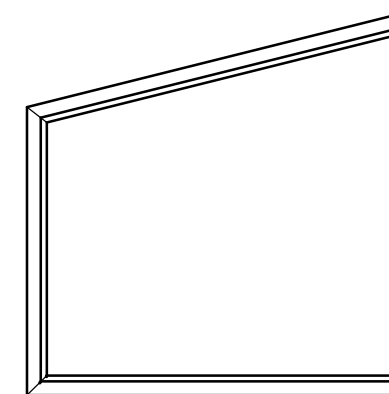
FULL CIRCLE



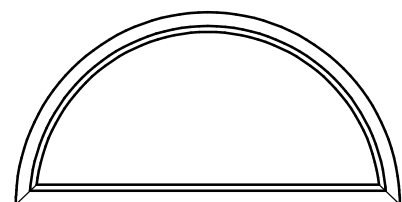
FULL ELLIPSE (OVAL)



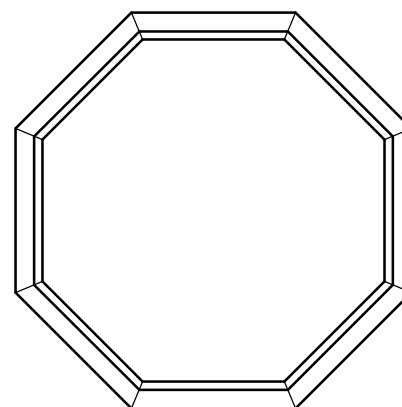
TOMBSTONE



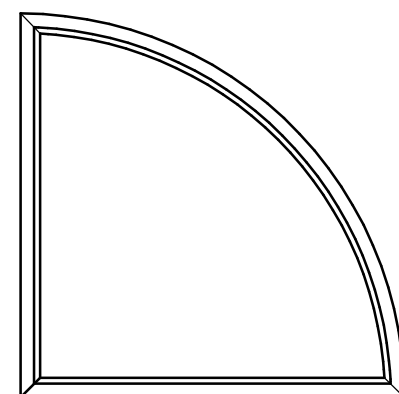
TRAPEZOID



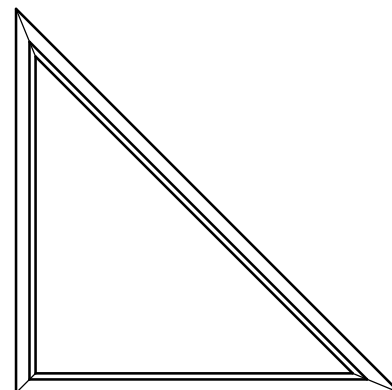
1/2 CIRCLE



OCTAGON



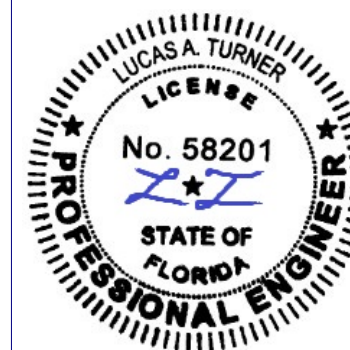
1/4 CIRCLE



TRIANGLE

NOTES:

1. SEE SHEET 6 FOR DETAILED ANCHOR INSTALLATION REQUIREMENTS.
2. THRU FRAME - MASONRY, WOOD OR METAL OPENING.
3. OVERALL SIZE MUST NOT EXCEED THE MAX. WIDTH AND HEIGHT OF RECTANGULAR WINDOWS ON SHEET 1.
4. ANCHOR SPACING FOR ARCHITECTURAL FLANGE WINDOWS MUST FOLLOW THE LAYOUT SHOWN ON SHEET 6, WITH ANCHOR SPACING MEASURED ALONG THE LENGTH OF THE PRODUCT.



8/05/2020

LUCAS A. TURNER, P.E.
FL PE # 58201
2428 Old Natchez Trc Trl
Camden, TN 38320
PH. 941-380-1574

SHEET DESCRIPTION:

**ARCHITECTURAL
SHAPES**

| | |
|-------------------|-------------------|
| DRAWN BY: AAJ | DATE: 10/29/11 |
| DWG #: CWS-506 | REV.: D |
| SCALE: 1:1 | SHEET 2 OF 7 |

DESIGN PRESSURES WITH GLASS TYPE A OR B GLAZING (DIMENSIONS ARE UNIT SIZES)

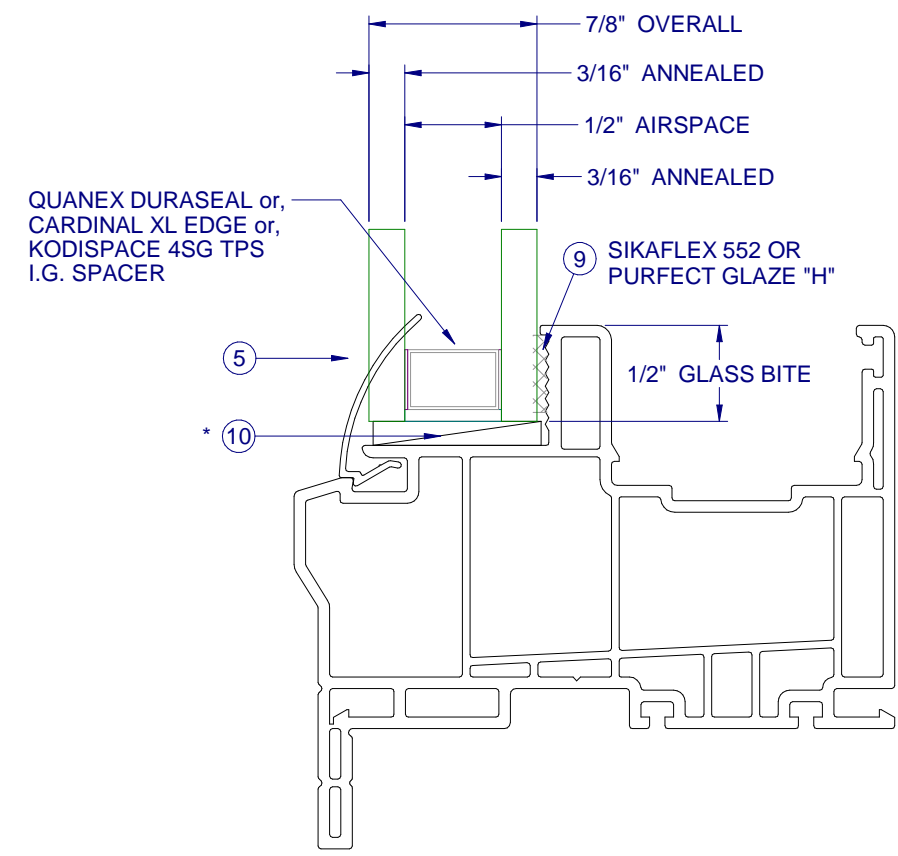
| Short Side (in.) | Long Side (in.) | | | | | | | | | |
|------------------|-----------------|-------------|-------------|-------------|-------------|-------------|-------------|-------------|-------------|-------------|
| | 18 | 24 | 30 | 36 | 42 | 48 | 54 | 60 | 66 | 72 |
| 18 | +82.5/-82.5 | +82.5/-82.5 | +82.5/-82.5 | +82.5/-82.5 | +82.5/-82.5 | +82.5/-82.5 | +82.5/-82.5 | +82.5/-82.5 | +82.5/-82.5 | +82.5/-82.5 |
| 24 | +82.5/-82.5 | +82.5/-82.5 | +82.5/-82.5 | +82.5/-82.5 | +82.5/-82.5 | +82.5/-82.5 | +82.5/-82.5 | +82.5/-82.5 | +82.5/-82.5 | +82.5/-82.5 |
| 30 | +82.5/-82.5 | +82.5/-82.5 | +82.5/-82.5 | +82.5/-82.5 | +82.5/-82.5 | +82.5/-82.5 | +82.5/-82.5 | +82.5/-82.5 | +82.5/-82.5 | +75.6/-75.6 |
| 36 | +82.5/-82.5 | +82.5/-82.5 | +82.5/-82.5 | +82.5/-82.5 | +82.5/-82.5 | +82.5/-82.5 | +82.5/-82.5 | +82.5/-82.5 | +82.5/-82.5 | +74.8/-74.8 |
| 42 | +82.5/-82.5 | +82.5/-82.5 | +82.5/-82.5 | +82.5/-82.5 | +77.9/-77.9 | +77.9/-77.9 | +77.9/-77.9 | +77.9/-77.9 | +77.9/-77.9 | +68.4/-68.4 |
| 48 | +82.5/-82.5 | +82.5/-82.5 | +82.5/-82.5 | +82.5/-82.5 | +77.9/-77.9 | +59.7/-59.7 | +59.7/-59.7 | +59.7/-59.7 | +59.7/-59.7 | +56.1/-56.1 |
| 50 | +82.5/-82.5 | +82.5/-82.5 | +82.5/-82.5 | +82.5/-82.5 | +77.9/-77.9 | +59.7/-59.7 | +55.0/-55.0 | +55.0/-55.0 | +55.0/-55.0 | +55.0/-55.0 |



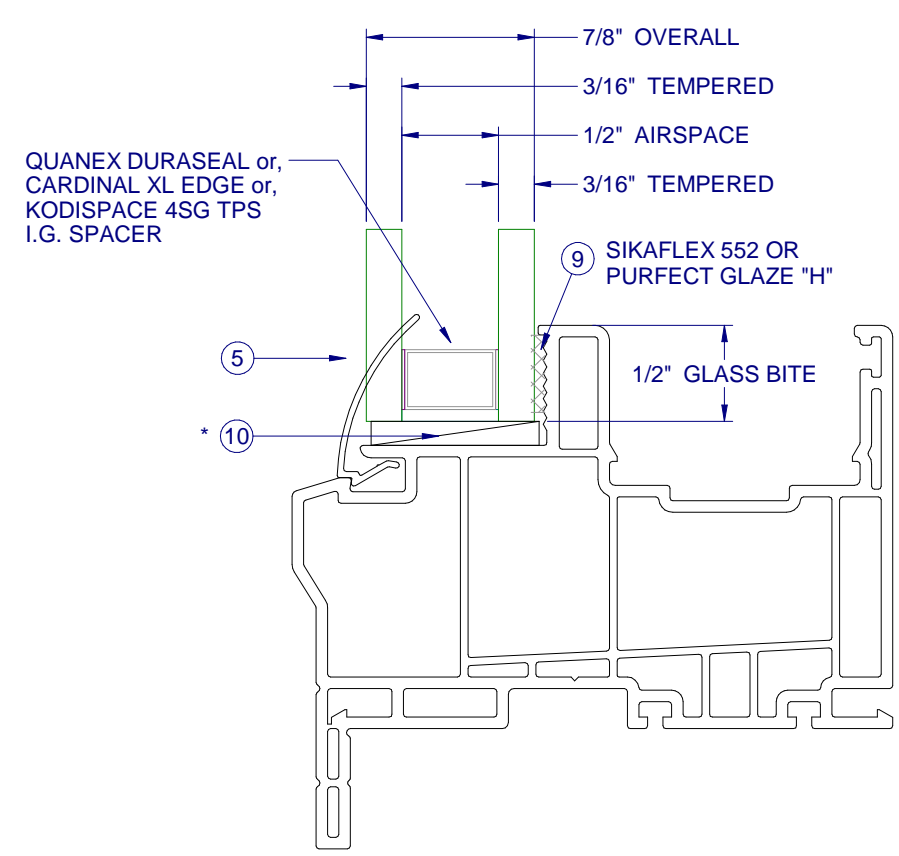
1900 SW 44TH AVE.
OCALA, FLORIDA 34474
WWW.CWS.CC

**8150 PVC
PICTURE WINDOW
NON-IMPACT**

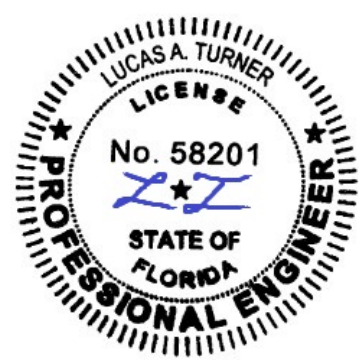
PROPRIETARY AND CONFIDENTIAL
THE INFORMATION CONTAINED IN THIS DRAWING IS THE SOLE PROPERTY OF CUSTOM WINDOW SYSTEMS, INC. ANY REPRODUCTION IN PART OR AS A WHOLE WITHOUT THE WRITTEN PERMISSION OF CUSTOM WINDOW SYSTEMS, INC IS PROHIBITED.



GLASS TYPE A



GLASS TYPE B



8/05/2020

LUCAS A. TURNER, P.E.
FL PE # 58201
2428 Old Natchez Trc Trl
Camden, TN 38320
PH. 941-380-1574

SHEET DESCRIPTION:
**COMPARATIVE ANALYSIS
AND GLAZING DETAILS**

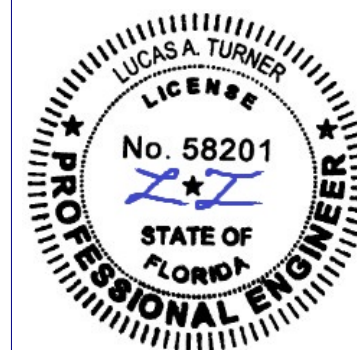
| | |
|-------------------|-------------------|
| DRAWN BY: AAJ | DATE: 10/29/11 |
| DWG #: CWS-506 | REV.: D |
| SCALE: 1:1 | SHEET 3 OF 7 |

* SETTING BLOCKS PER FBC 2411.3.3.1

NOTE: IF SIZE INTENDED IS NOT SHOWN, USE NEXT LARGER SIZE.

**8150 PVC
PICTURE WINDOW
NON-IMPACT**

PROPRIETARY AND CONFIDENTIAL
THE INFORMATION CONTAINED IN THIS DRAWING IS THE SOLE PROPERTY OF CUSTOM WINDOW SYSTEMS, INC. ANY REPRODUCTION IN PART OR AS A WHOLE WITHOUT THE WRITTEN PERMISSION OF CUSTOM WINDOW SYSTEMS, INC IS PROHIBITED.



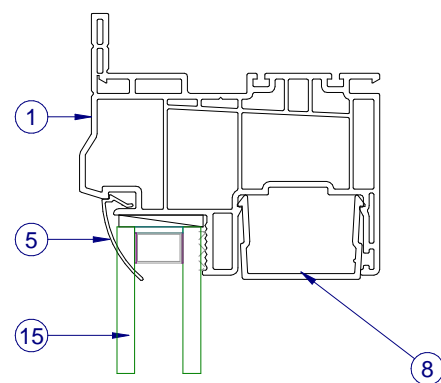
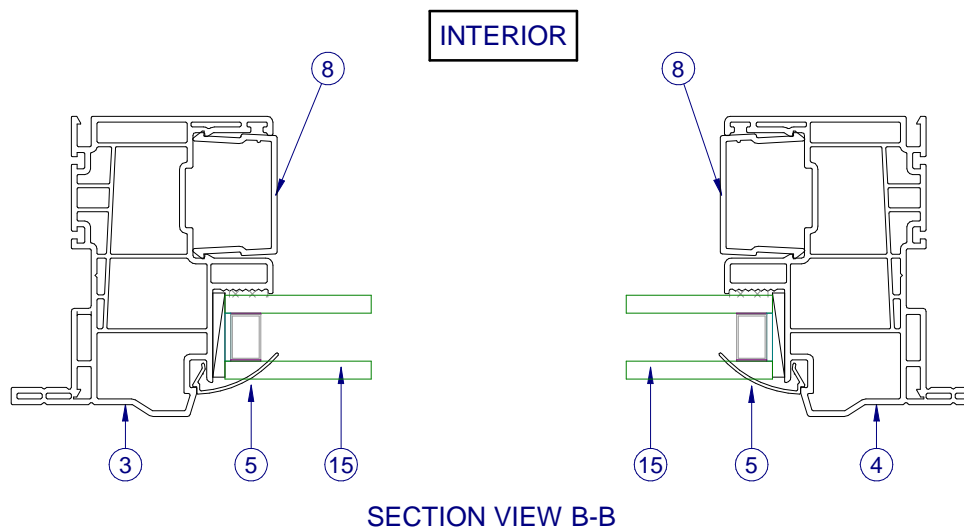
8/05/2020

LUCAS A. TURNER, P.E.
FL PE # 58201
2428 Old Natchez Trc Trl
Camden, TN 38320
PH. 941-380-1574

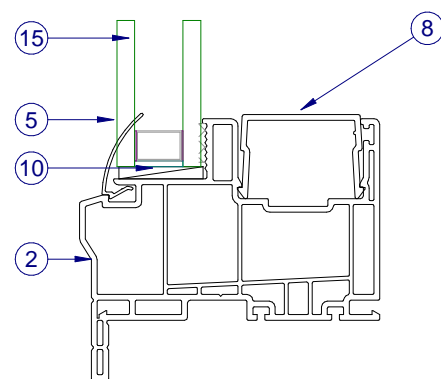
SHEET DESCRIPTION:

SECTION VIEWS

| | |
|-------------------|-------------------|
| DRAWN BY: AAJ | DATE: 10/29/11 |
| DWG #: CWS-506 | REV.: D |
| SCALE: 1:2 | SHEET 4 OF 7 |



INTERIOR

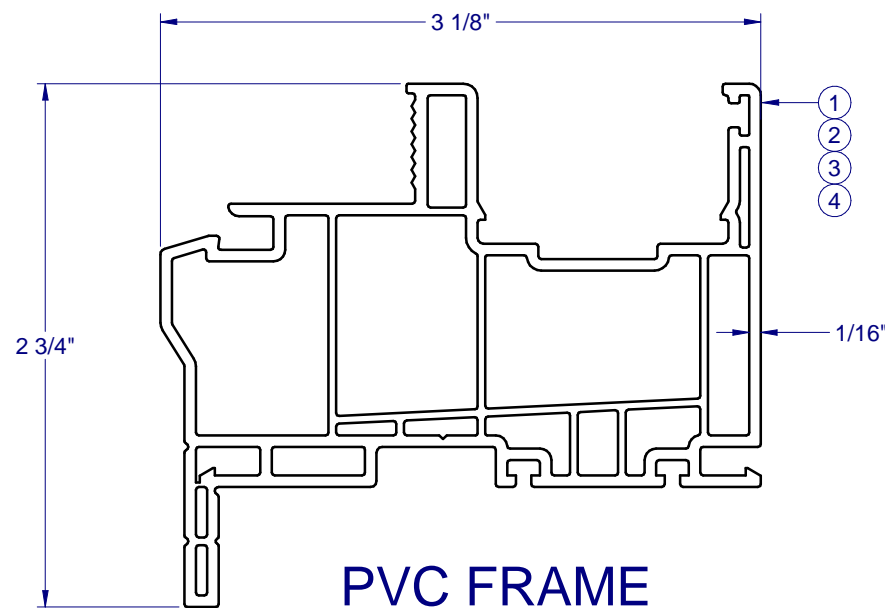


SECTION VIEW A-A

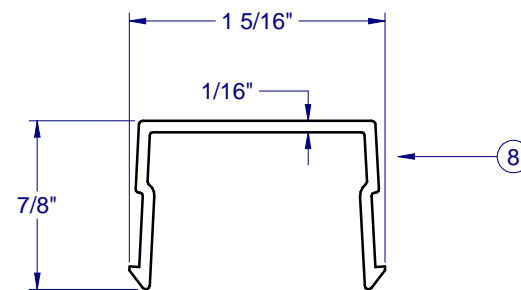
ITEMS NOT SHOWN FOR CLARITY:
11-14

| PARTS LIST | | | |
|------------|--------|--|----------|
| ITEM | PART # | DESCRIPTION | MATERIAL |
| 1 | H-6222 | Fr., PW, Main, Head, Flg | PVC |
| 2 | H-6222 | Fr., PW, Main, Sill, Flg | PVC |
| 3 | H-6222 | Fr., PW, Main, L. Jb., Flg | PVC |
| 4 | H-6222 | Fr., PW, Main, R. Jb., Flg | PVC |
| 5 | S-6237 | Glz. Bd., Fxd. | PVC |
| 8 | S-6025 | Sash Stop / Groove Filler | PVC |
| 9 | P-3438 | Sikaflex 552 or Purfect Claze "H" | |
| 10 | P-5615 | Set. Blk., 85 Dur., 1/8" x 1" x 2" Lg. | Rubber |
| 11 | P-3684 | PW-8300 Gold Cert. Label, NFRC Tab | |
| 13 | P-3881 | Temporary Lbl. (NFRC/DP) | |
| 14 | P-3613 | CWS Lbl. (logo) | |
| 15 | | Glass, Fixed (See sheet 5) | |

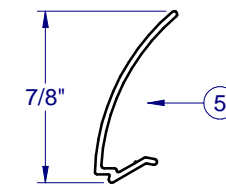
LINE ITEMS NOT USED:
6, 7, 12, 16



**PVC FRAME
FLANGE
H-6222**

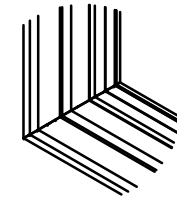


**PVC SASH
STOP
S-6025**



**PVC GLAZING
BEAD
S-6237**

**FRAME CORNER
CONSTRUCTION**



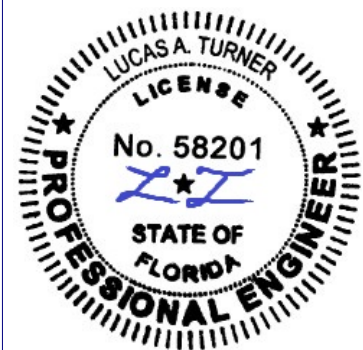
CORNER WELD
(ALL SIDES)
1:8

Custom
WINDOW SYSTEMS

1900 SW 44TH AVE.
OCALA, FLORIDA 34474
WWW.CWS.CC

**8150 PVC
PICTURE WINDOW
NON-IMPACT**

PROPRIETARY AND CONFIDENTIAL
THE INFORMATION CONTAINED IN
THIS DRAWING IS THE SOLE
PROPERTY OF CUSTOM WINDOW
SYSTEMS, INC. ANY
REPRODUCTION IN PART OR AS A
WHOLE WITHOUT THE WRITTEN
PERMISSION OF CUSTOM WINDOW
SYSTEMS, INC IS PROHIBITED.



8/05/2020

LUCAS A. TURNER, P.E.
FL PE # 58201
2428 Old Natchez Trc Trl
Camden, TN 38320
PH. 941-380-1574

SHEET DESCRIPTION:

**DP CHART, BOM AND
EXTRUSIONS**

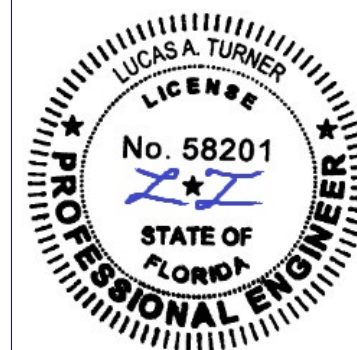
DRAWN BY: AAJ DATE: 10/29/11

DWG #: CWS-506 REV.: D

SCALE: 1:1 SHEET 5 OF 7

**8150 PVC
PICTURE WINDOW
NON-IMPACT**

PROPRIETARY AND CONFIDENTIAL
THE INFORMATION CONTAINED IN
THIS DRAWING IS THE SOLE
PROPERTY OF CUSTOM WINDOW
SYSTEMS, INC. ANY
REPRODUCTION IN PART OR AS A
WHOLE WITHOUT THE WRITTEN
PERMISSION OF CUSTOM WINDOW
SYSTEMS, INC IS PROHIBITED.



8/05/2020

LUCAS A. TURNER, P.E.
FL PE # 58201
2428 Old Natchez Trc Trl
Camden, TN 38320
PH. 941-380-1574

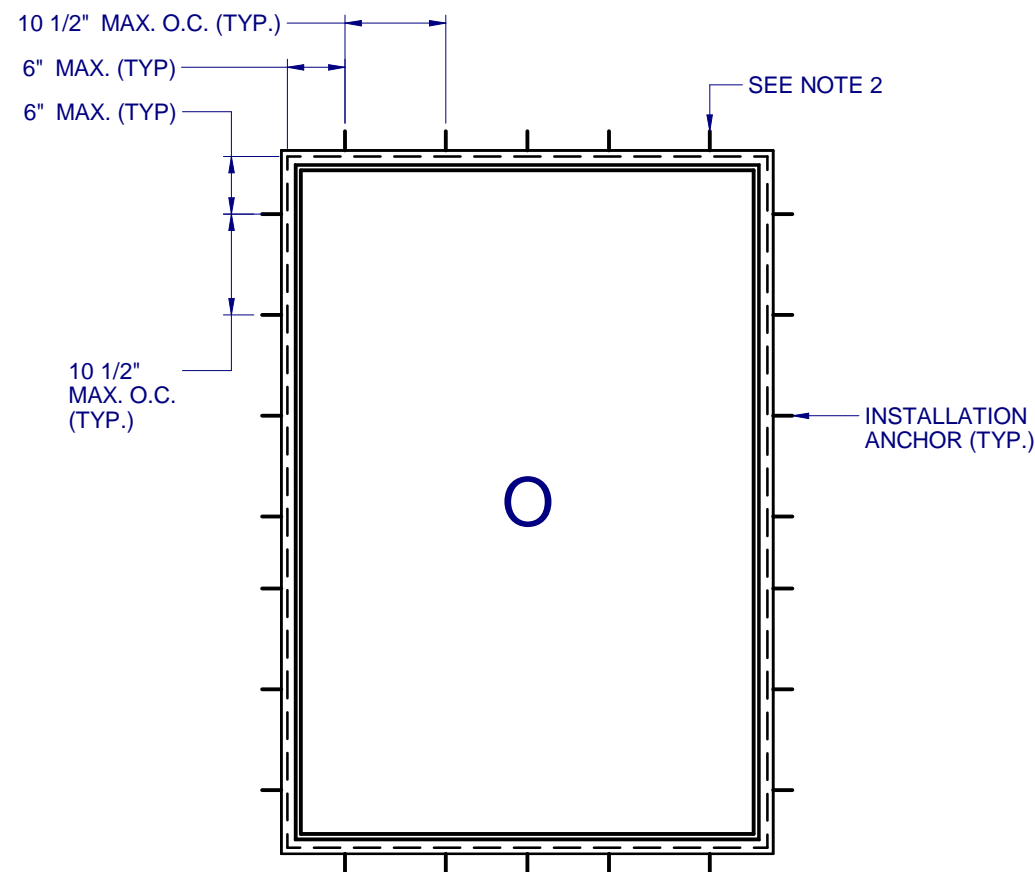
SHEET DESCRIPTION:

**ANCHOR SCHEDULE AND
NOTES**

| | |
|------------------|-------------------|
| DRAWN BY: AAJ | DATE: 10/29/11 |
|------------------|-------------------|

| | |
|-------------------|------------|
| DWG #: CWS-506 | REV.: D |
|-------------------|------------|

| | |
|----------------|-----------------|
| SCALE: 1:20 | SHEET 6 OF 7 |
|----------------|-----------------|



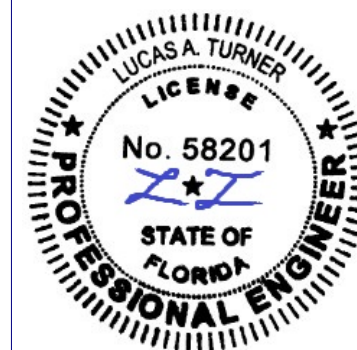
ANCHOR LAYOUT - (FLANGE)

NOTES:

1. INSTALL ONE ANCHOR AT EACH INSTALLATION LOCATION. ANCHOR SPACING APPLIES TO ALL SHAPES (SEE SHEET 2) ALONG ALL FRAME EDGES. SILL ANCHOR SPACING SAME AS HEAD.
2. SHIM AS REQ AT EACH INSTALLATION ANCHOR USING LOAD BEARING SHIMS. MAX. ALLOWABLE SHIM STACK TO BE 1/4". USE SHIMS WHERE SPACE GREATER THAN 1/16" IS PRESENT. LOAD BEARING SHIMS SHALL BE CONSTRUCTED OF HIGH DENSITY PLASTIC OR BETTER. WOOD SHIMS ARE NOT ALLOWED.
3. ANCHOR TYPE, SIZE, SPACING AND EMBEDMENT SHALL BE AS SPECIFIED IN THESE DRAWINGS, SEE TABLE 1, SHEET 7.
4. ALL INSTALLATION ANCHORS MUST BE MADE OF OR PROTECTED WITH A CORROSION RESISTANT MATERIAL OR COATING. DISSIMILAR METALS OR MATERIALS IN CONTACT WITH PRESSURE TREATED WOOD MUST BE PROTECTED TO PREVENT REACTION.
5. INSTALLATION ANCHORS SHALL BE IN ACCORDANCE WITH ANCHOR MANUFACTURER'S INSTALLATION INSTRUCTIONS, AND ANCHORS SHALL NOT BE USED IN SUBSTRATES WITH STRENGTHS LESS THAN THE MINIMUM SPECIFIED IN TABLE 1, SHEET 7.
6. ANCHOR EMBEDMENT TO SUBSTRATE SHALL BE BEYOND WALL DRESSING OR STUCCO. FOR CONCRETE/CMU OPENINGS, EMBEDMENT SHALL BE BEYOND WOOD BUCKS, IF USED, INTO SUBSTRATE - 1X BUCKS ARE OPTIONAL.
7. A MINIMUM CENTER-TO-CENTER SPACING SHALL BE MAINTAINED BETWEEN ALL FASTENERS: 3" FOR MASONRY, 1" FOR WOOD AND METAL.
8. WOOD OR MASONRY OPENINGS, BUCKS AND BUCK FASTENERS SHALL BE PROPERLY DESIGNED BY THE ARCHITECT OR ENGINEER OF RECORD AND INSTALLED TO TRANSFER WIND LOADS TO THE STRUCTURE. SUBSTRATES SHALL MEET THE MINIMUM STRENGTH REQUIREMENTS AS SHOWN IN TABLE 1, SHEET 7. CONCRETE AND MASONRY SUBSTRATES MAY NOT BE CRACKED.
9. SEALING AND FLASHING STRATEGIES FOR OVERALL WATER RESISTANCE OF INSTALLATION SHALL BE DONE BY OTHERS FOLLOWING THE CURRENT VERSION OF THE REFERENCE DOCUMENTS:
FMA/AAMA 100(FIN WINDOWS), FMA/AAMA 200(FLANGE WINDOWS), FMA/WDMA 250(BOX WINDOWS), FMA/AAMA/WDMA 300(EXTERIOR DOORS)

**8150 PVC
PICTURE WINDOW
NON-IMPACT**

PROPRIETARY AND CONFIDENTIAL
THE INFORMATION CONTAINED IN THIS DRAWING IS THE SOLE PROPERTY OF CUSTOM WINDOW SYSTEMS, INC. ANY REPRODUCTION IN PART OR AS A WHOLE WITHOUT THE WRITTEN PERMISSION OF CUSTOM WINDOW SYSTEMS, INC IS PROHIBITED.



8/05/2020

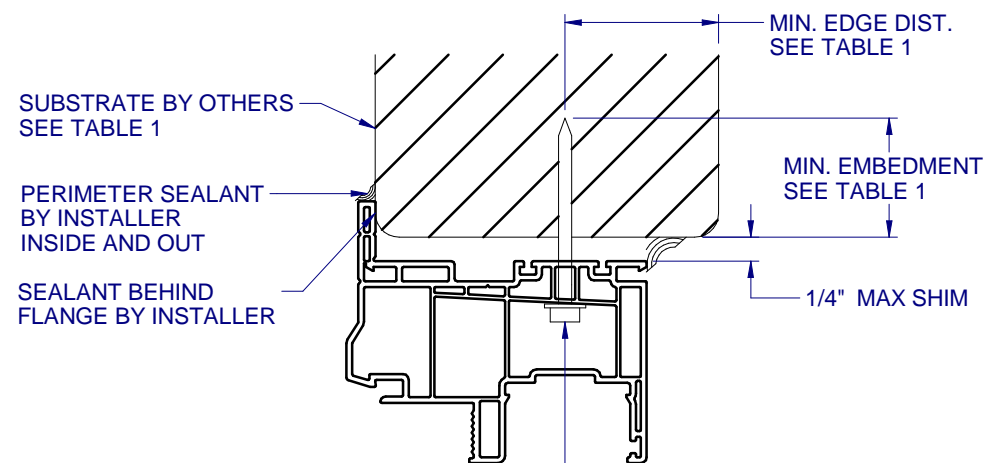
LUCAS A. TURNER, P.E.
FL PE # 58201
2428 Old Natchez Trc Trl
Camden, TN 38320
PH. 941-380-1574

SHEET DESCRIPTION:

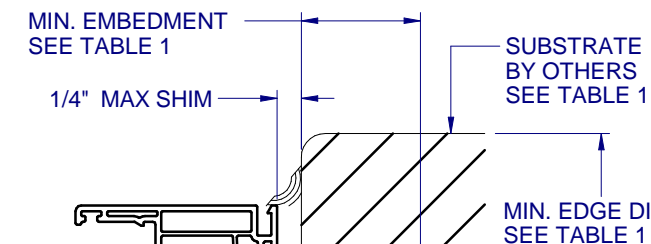
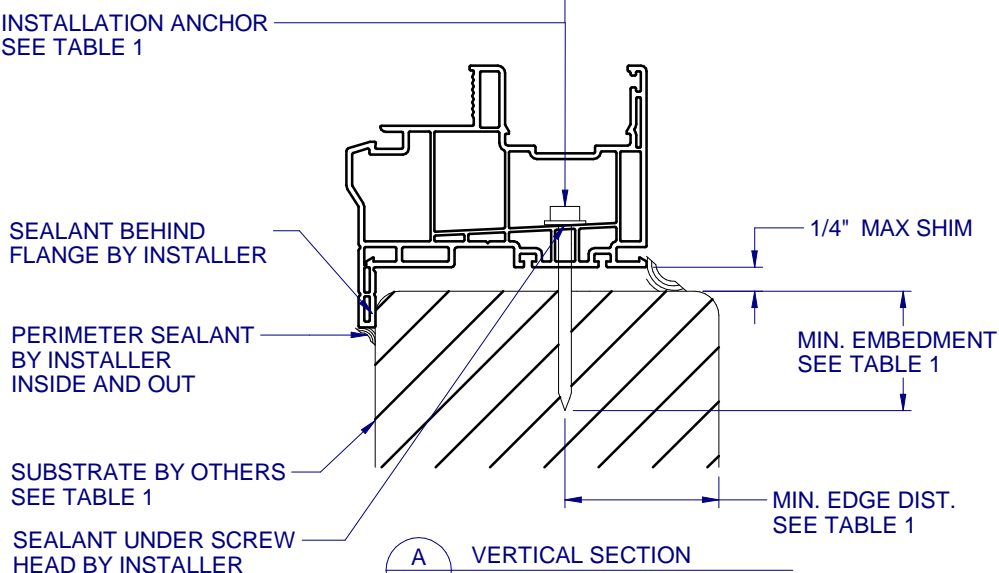
INSTALLATION DETAILS

| | |
|-------------------|-------------------|
| DRAWN BY: AAJ | DATE: 10/29/11 |
| DWG #: CWS-506 | REV.: D |
| SCALE: 1:2 | SHEET 7 OF 7 |

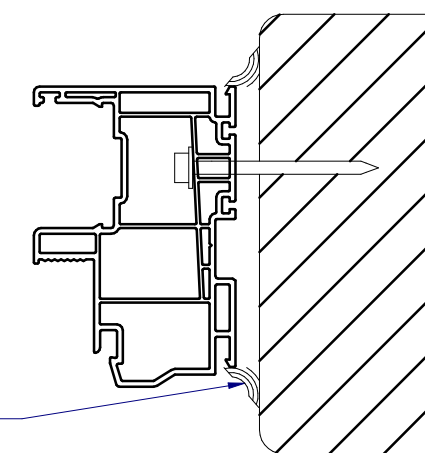
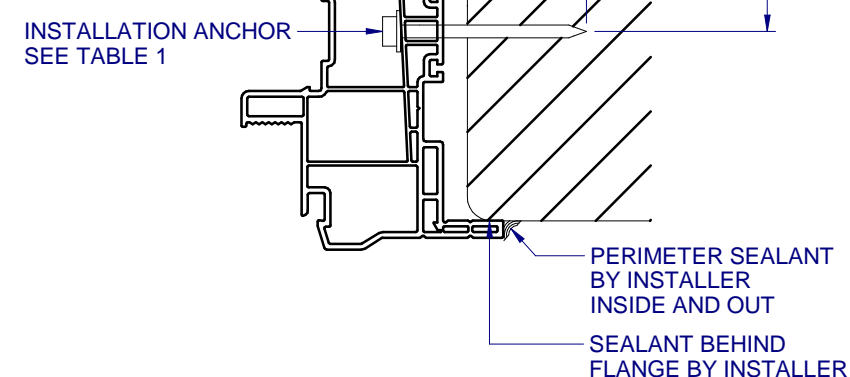
TYPICAL HEAD ANCHORAGE



A
7 VERTICAL SECTION
TYPICAL SILL ANCHORAGE



B
7 HORIZONTAL SECTION
TYPICAL JAMB ANCHORAGE



C
7 HORIZONTAL SECTION
BOX FRAME INSTALLATION
HEAD AND SILL SIMILAR FOR BOX INSTALLATION

FLANGE REMOVAL NOTE: PARTIALLY OR FULLY REMOVING THE FLANGE, UP TO AND INCLUDING A BOX-FRAME APPLICATION IS ACCEPTABLE PROVIDED:

- MIN. 1/4" FILLET OF CONSTRUCTION-GRADE ADHESIVE CAULK IS APPLIED INSIDE AND OUT, FULL PERIMETER, BY INSTALLER.
- PRODUCT ANCHORAGE IS IN ACCORDANCE WITH REQUIREMENTS AS SHOWN FOR FLANGE WINDOWS.

TABLE 1: APPROVED INSTALLATION FASTENERS

| SUBSTRATE TYPE | ANCHOR TYPE | MIN. EMBEDMENT | MIN. EDGE DIST. |
|--|---|----------------------------|-----------------|
| CONCRETE (2.0 KSI MIN.) | 3/16" ITW TAPCON | 1-1/2" | 1-1/8" |
| HOLLOW OR GROUT-FILLED CMU (117 PCF MIN.) | 3/16" ITW TAPCON | 1" | 2" |
| CONCRETE (2.85 KSI MIN.) | 3/16" ELCO ULTRACON | 1" | 1" |
| GROUT-FILLED CMU (ASTM C-90) | 3/16" ELCO ULTRACON | 1-1/4" | 2-1/2" |
| 2X MIN. SOUTHERN PINE (G=0.55) | 3/16" ITW TAPCON OR ELCO ULTRACON | 1-3/8" | 7/8" |
| 2X MIN. SOUTHERN PINE (G=0.55) | #10 WOOD SCREW | 1-3/8" | 7/8" |
| 16 GAUGE (0.060") MIN. STEEL STUD (33 KSI YIELD MIN) | #10-16 HILTI KWIK-FLEX OR ITW TEKS SELF-DRILLING SCREW | FULL THREAD THRU 0.060" | 7/16" |
| 1/8" ALUM. (6063-T5 MIN.) OR 1/8" STEEL (33 KSI MIN.) | #10 GRADE 5 SELF-TAPPING / DRILLING SCREW | FULL THREAD THRU 0.125" | 7/16" |