

ES WINDOW INC. ES-PSD5030T FRENCH DOOR - L.M.I.

GENERAL NOTES:

- THIS PRODUCT HAS BEEN DESIGNED AND TESTED TO COMPLY WITH THE REQUIREMENTS OF THE 7TH EDITION FLORIDA BUILDING CODE (2020)/ 8TH EDITION FLORIDA BUILDING CODE (2023) INCLUDING HIGH VELOCITY HURRICANE ZONE (HVHZ).
- DOORS RATED FOR LARGE MISSILE IMPACT. LMI SYSTEM TO BE USED FOR INSTALLATIONS UP TO 30 FT OF GRADE. FOR ABOVE 30 FT OF GRADE, SMI TO BE USED. IMPACT SHUTTERS ARE NOT REQUIRED.
- DOORS ARE APPROVED FOR WATER INFILTRATION WHEN HIGH THRESHOLD TYPE USED.
- ANCHORS SHALL BE AS LISTED, SPACED AS SHOWN ON DETAILS. ANCHORS EMBEDMENT TO BASE MATERIAL SHALL BE BEYOND WALL DRESSING OR STUCCO.
- ANCHORING OR LOADING CONDITIONS NOT SHOWN IN THESE DETAILS ARE NOT PART OF THIS APPROVAL.
- MATERIALS INCLUDING BUT NOT LIMITED TO STEEL/METAL SCREWS THAT COME INTO CONTACT WITH OTHER DISSIMILAR MATERIALS SHALL MEET THE REQUIREMENTS OF THE 7TH EDITION FLORIDA BUILDING CODE (2020)/ 8TH EDITION FLORIDA BUILDING CODE (2023) SECTION AS APPLICABLE.
- METAL STRUCTURES BY OTHERS TO BE DESIGNED TO SUPPORT THE LOADS IMPOSED BY THIS GLAZING SYSTEM AND TO TRANSFER SUCH LOADS TO THE BUILDING MAIN STRUCTURE.
- ULTIMATE LOAD OBTAINED FROM ASCE 7-16/ ASCE 7-22, MULTIPLY BY 0.6 SHALL BE LESS THAN OR EQUAL TO MAX. DESIGN LOAD IN THIS DOCUMENT. THE DESIGN LOADS SHOWN IN THIS DOCUMENT ARE ALLOWABLE DESIGN LOADS.
- MANUFACTURER'S LABEL SHALL BE LOCATED ON A READILY VISIBLE LOCATION IN ACCORDANCE WITH SECTION 1709.9.3 OF FLORIDA BUILDING CODE LABELING TO COMPLY WITH SECTION 1709.9.2.

USE CHARTS AS FOLLOWS.

- STEP 1:** DETERMINE DESIGN WIND LOAD REQUIREMENTS BASED ON WIND VELOCITY, BLDG. HEIGHT, WIND ZONE USING APPLICABLE ASCE 7-16/ ASCE 7-22 STANDARD OR WIND TUNNEL REPORTS.
- STEP 2:** SEE SHEET E1 & E2 FOR TYPICAL DOOR ELEVATION. SEE SHEET G1 FOR GLASS OPTION
- STEP 3:** SEE SHEET A1 FOR ANCHOR OPTIONS. SEE SHEET E1 FOR NUMBER OF ANCHORS REQUIRED.
- STEP 4:** THE LOWEST VALUE RESULTING FROM STEPS 2 & 3 THAT EXCEED THE DESIGN WIND PRESSURES DETERMINED THRU STEP 1 SHALL APPLY TO ENTIRE SYSTEM.

| ABBREVIATIONS AND SYMBOLS | |
|----------------------------------|--|
| D.L.O. - DAYLITE OPENING | |
| F.H. - FRAME HEIGHT | |
| F.W. - FRAME WIDTH | |
| W/ - WITH | |
| W/O - WITHOUT | |
| O.C. - ON CENTER | |

LIMITATIONS OF USE

A- THIS PRODUCT EVALUATION DOCUMENT (P.E.D.) PREPARED BY THIS ENGINEER IS GENERIC AND DOES NOT PROVIDE INFORMATION FOR A SITE SPECIFIC PROJECT. I.E. WHERE THE SITE CONDITIONS DEVIATE FROM THE P.E.D.

B- CONTRACTOR TO BE RESPONSIBLE FOR THE SELECTION, PURCHASE AND INSTALLATION OF THIS PRODUCT BASED ON THIS PRODUCT EVALUATION PROVIDED HE/SHE DOES NOT DEVIATE FROM THE CONDITIONS DETAILED ON THIS DOCUMENT.

C- THIS PRODUCT EVALUATION DOCUMENT WILL BE CONSIDERED INVALID IF ALTERED BY ANY MEANS.

D- SITE SPECIFIC PROJECTS SHALL BE PREPARED BY A FLORIDA REGISTERED ENGINEER OR ARCHITECT WHICH WILL BECOME THE ENGINEER OF RECORD (E.O.R.) FOR THE PROJECT AND WHO WILL BE RESPONSIBLE FOR THE PROPER USE OF THE P.E.D ENGINEER OF RECORD, ACTING AS A DELEGATED ENGINEER TO THE P.E.D ENGINEER SHALL SUBMIT TO THIS LATTER THE SITE SPECIFIC DRAWINGS FOR REVIEW.

E- THIS P.E.D. SHALL BEAR THE DATE AND ORIGINAL SEAL AND SIGNATURE OF THE PROFESSIONAL ENGINEER OF RECORD THAT PREPARED IT.

FLORIDA APPROVAL:
FL # 41359.1

ES-PSD5030T FRENCH DOOR - LMI
E.S. WINDOWS, INC.
10663 NE QUAYBRID GE CT.
MIAMI, FL 33138
TEL. (305) 624-7775

MCY ENGINEERING, INC.
GLAZING CONSULTANTS
12781 MIRAMAR PARKWAY #301
MIRAMARI, FL 33027 P: 305 271 0117
www.MCYEngineering.com mcy@mcyengineering.com

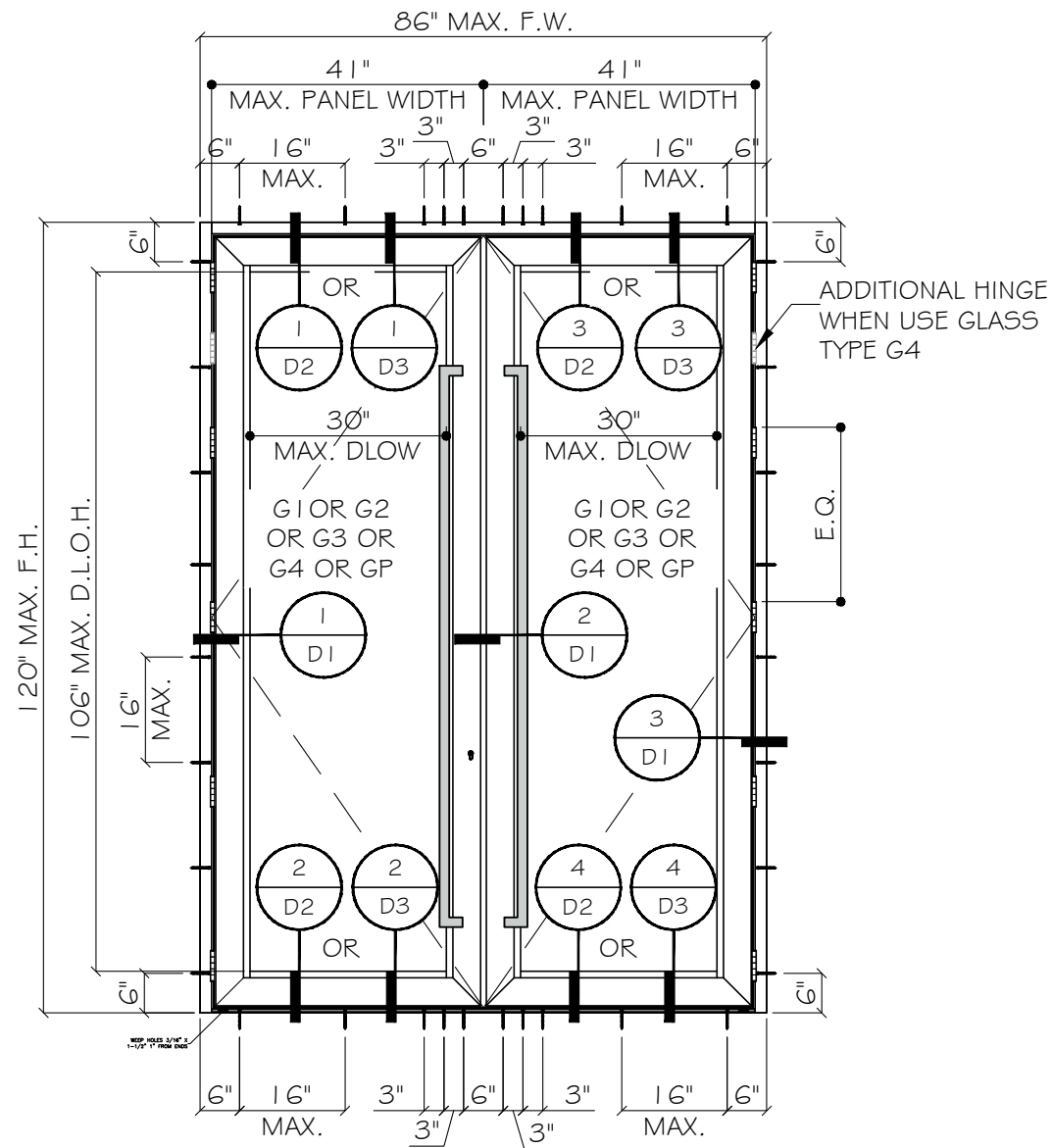
| Rev. No. | Date | Drawn By | Description |
|----------|------------|----------|--------------------|
| R2 | 09.18.2023 | James | UPDATE TO FBC 2023 |

Drawn Date: 09.18.2023 Drawn By: James

DRAWING NO.
AD22-09

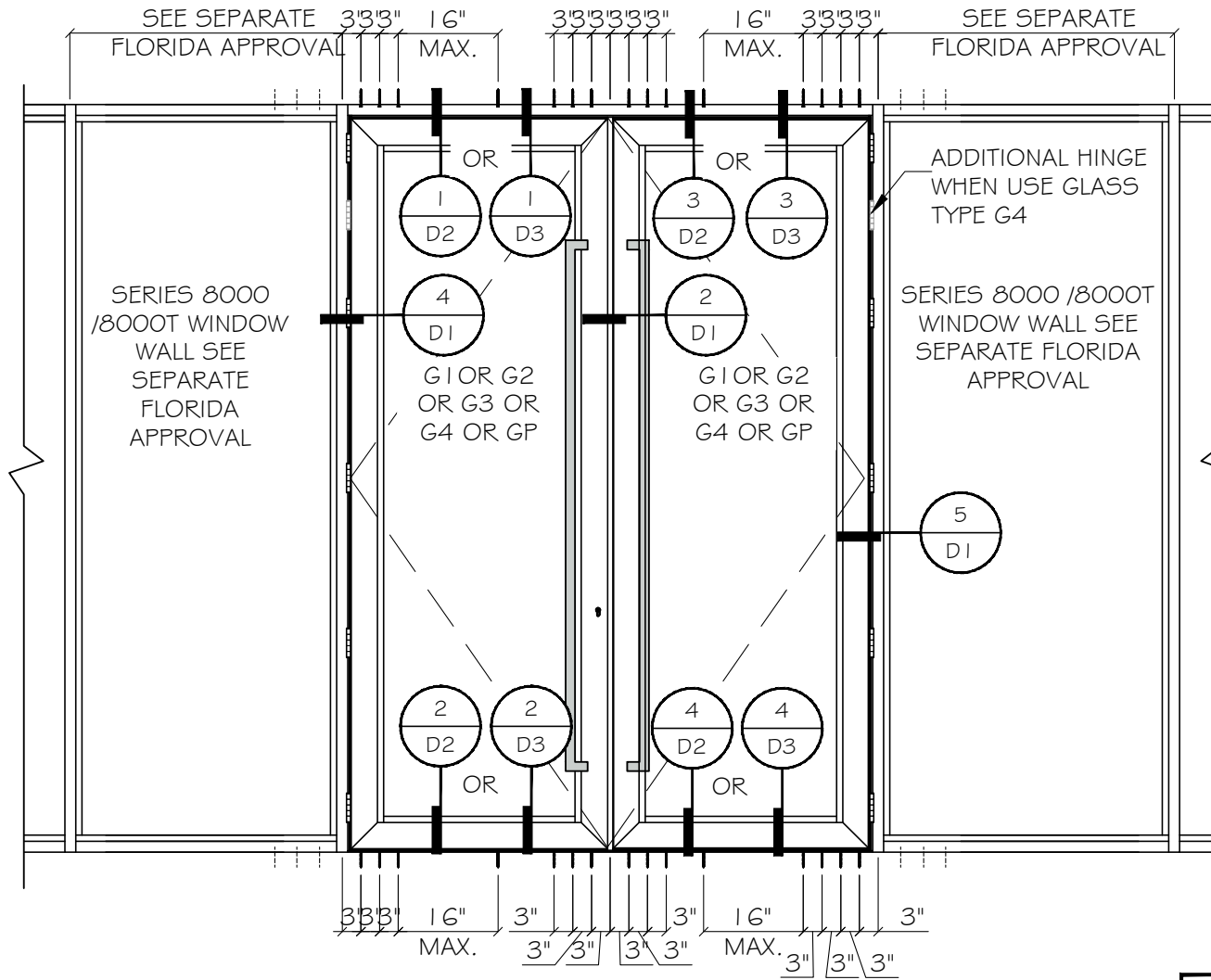
cover

Sheet No.
1 OF 12



TYPICAL EXTERIOR ELEVATIONS

DESIGN LOADS: ±95 PSF
(FOR SIZE SHOWN ABOVE OR
SMALLER AS PERMITTED BY FBC)



TYPICAL EXTERIOR ELEVATIONS

APPROVED CONFIGURATION

FLORIDA APPROVAL:
FL # 41359.1

YUNG WANG, P.E.
FLORIDA REGISTRATION
FL #55983
C.A.N. 5528677
STATE OF FLORIDA
PROFESSIONAL ENGINEER
September 18th, 2023

ES-PSD5030T FRENCH DOOR - LMI

E.S. WINDOWS, INC.
10663 NE QUAYBRID GE CT.
MIAMI, FL 33138
TEL. (305) 624-7775

| Rev. No. | Date | Drawn By | Description |
|----------|------------|----------|--------------------|
| R2 | 09.18.2023 | James | UPDATE TO FBC 2023 |

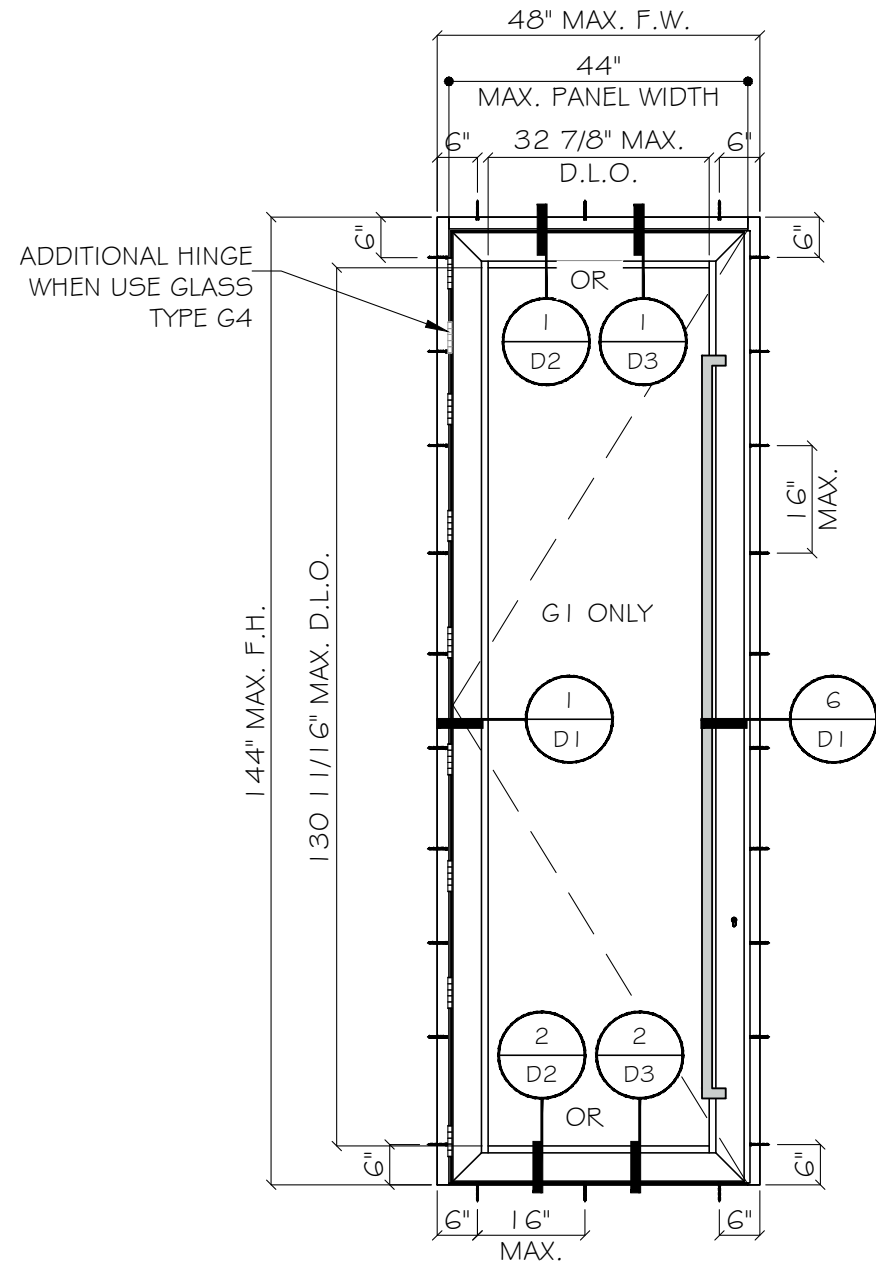
Drawn Date: 09.18.2023
Drawn By: James

DRAWING NO.
AD22-09

E1

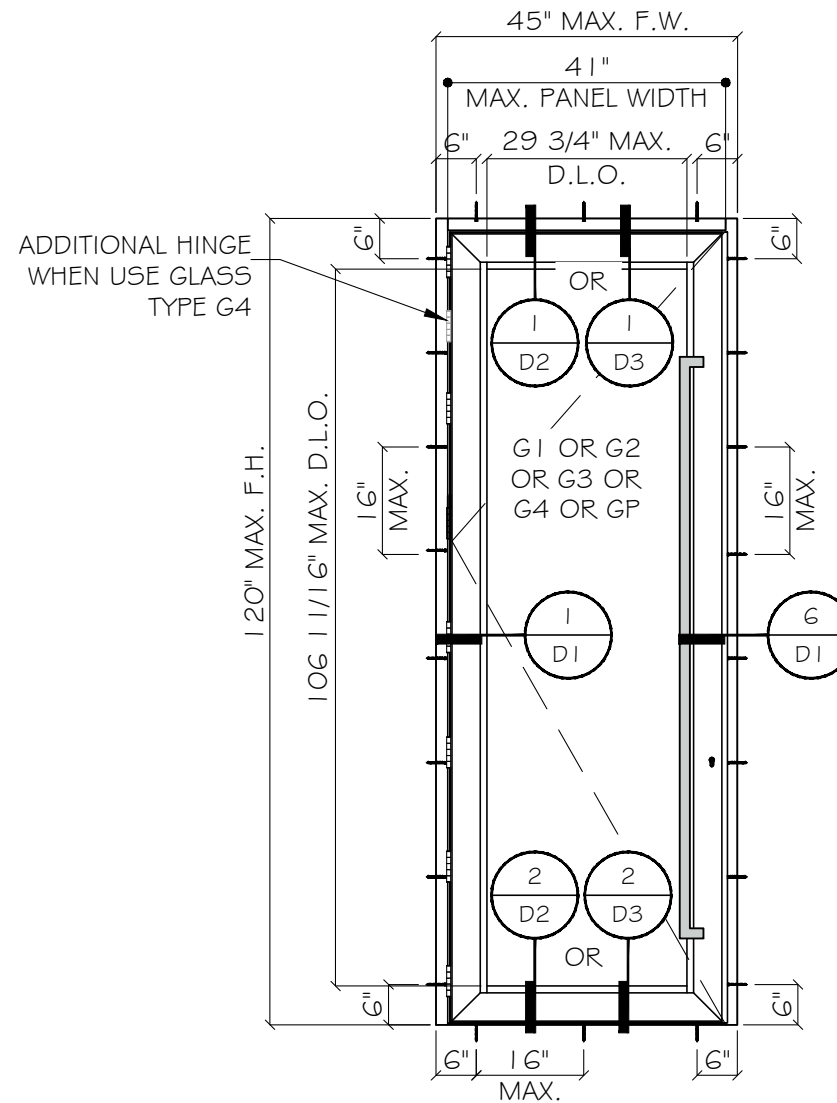
Sheet No.
2 OF 12

MCY ENGINEERING, INC.
GLAZING CONSULTANTS
12781 MIRAMAR PARKWAY #301
MIRAMAR, FL 33027 P: 305 271 0117
www.MCYEngineering.com mcy@mcyengineering.com



TYPICAL EXTERIOR ELEVATIONS

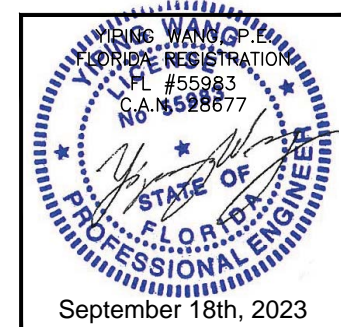
DESIGN LOADS: ±95 PSF
 (FOR SIZE SHOWN ABOVE OR
 SMALLER AS PERMITTED BY FBC)



TYPICAL EXTERIOR ELEVATIONS

DESIGN LOADS: ±95 PSF
 (FOR SIZE SHOWN ABOVE OR
 SMALLER AS PERMITTED BY FBC)

FLORIDA APPROVAL:
 FL # 41359.1



ES-PSD5030T FRENCH DOOR - LMI

E.S. WINDOWS, INC.
 10663 NE QUAYBRID GE CT.
 MIAMI, FL 33138
 TEL. (305) 624-7775

MCY ENGINEERING, INC.
 GLAZING CONSULTANTS
 12781 MIRAMAR PARKWAY #301
 MIRAMAR, FL 33027 P: 305 271 0117
 www.MCYEngineering.com mcy@mcyengineering.com

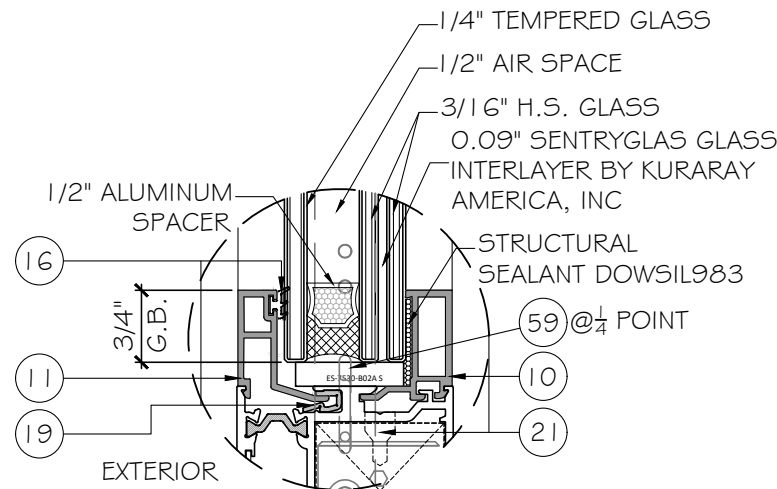
| Rev. No. | Date | Drawn By | Description |
|----------|------------|----------|--------------------|
| R2 | 09.18.2023 | James | UPDATE TO FBC 2023 |

Drawn Date: 09.18.2023
 Drawn By: James

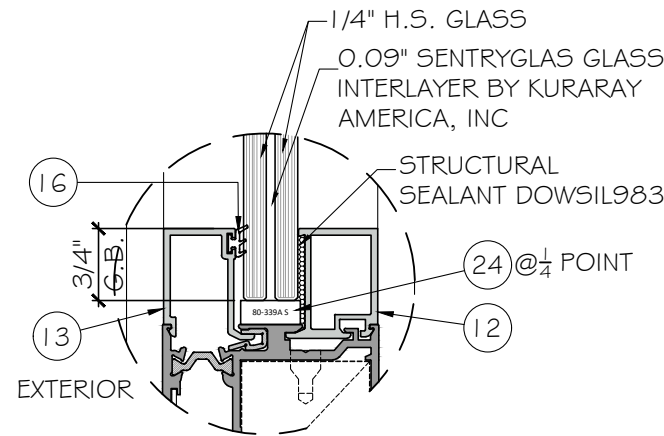
DRAWING NO.
 AD22-09

E2

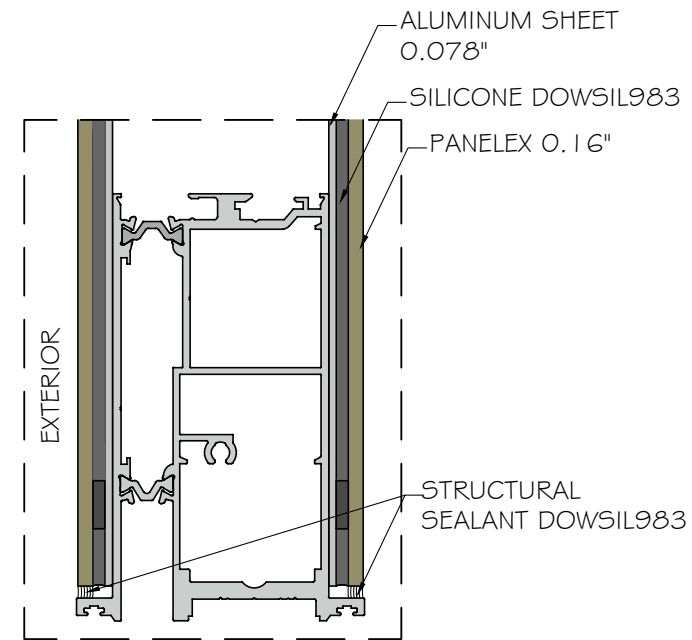
Sheet No.
 3 OF 12



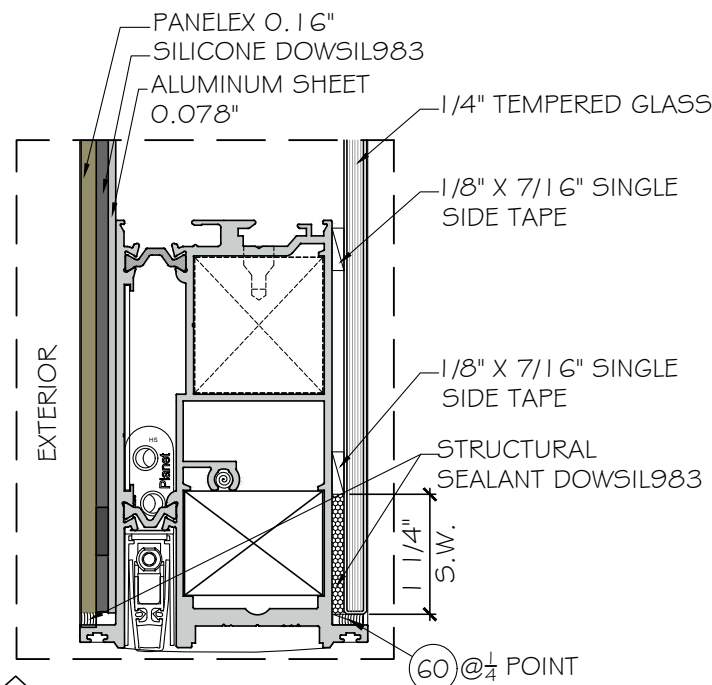
G1 GLASS TYPE 'G1'
1 3/16" NOMINAL OVERALL



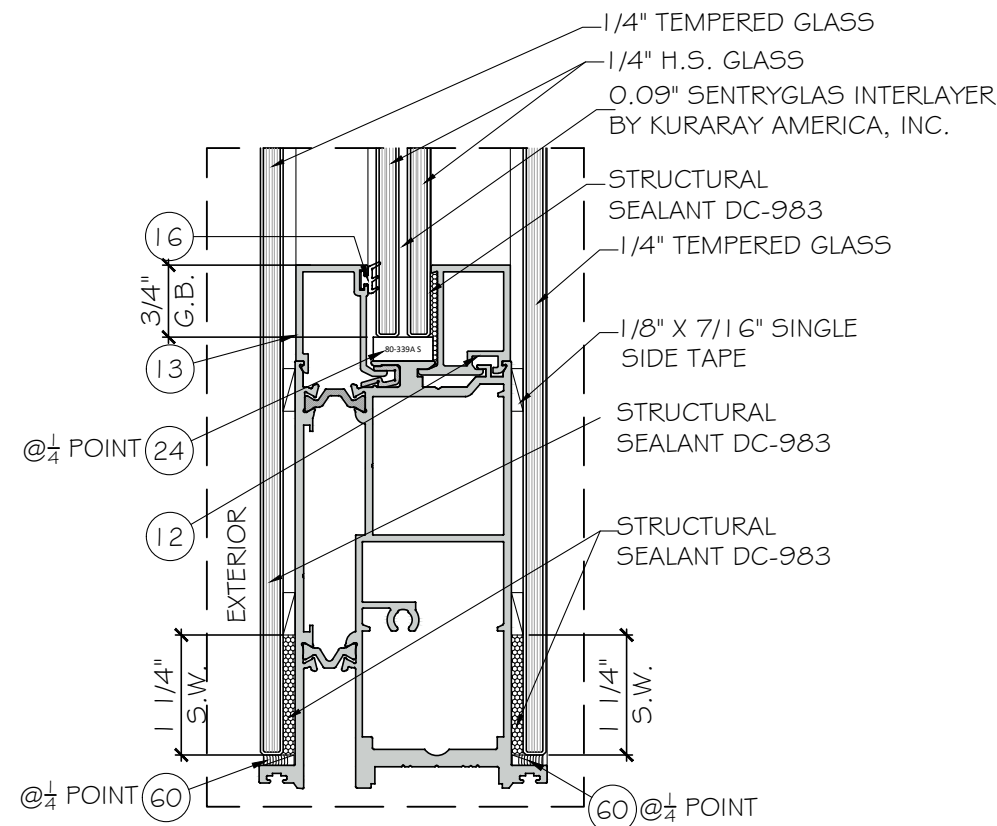
G2 GLASS TYPE 'G2'
9/16" NOMINAL OVERALL



GP PANELEX



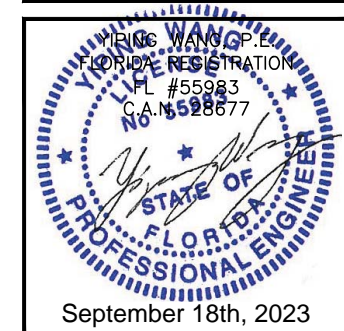
G3 PANEL TYPE 'G3'
60 @ 1/4 POINT



G4 GLASS TYPE 'G4'
60 @ 1/4 POINT

NOTE:
GLASS COMPLIES WITH ASTM E1300-09
(3 SEC. GUSTS).

FLORIDA APPROVAL:
FL # 41359.1



ES-PSD5030T FRENCH DOOR - LMI

E.S. WINDOWS, INC.
10663 NE QUAYBRID GE CT.
MIAMI, FL 33138
TEL. (305) 624-7775

| Rev. No. | Date | Drawn By | Description |
|----------|------------|----------|--------------------|
| R2 | 09.18.2023 | James | UPDATE TO FBC 2023 |

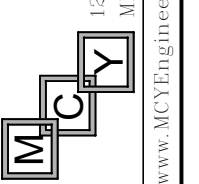
Drawn Date: 09.18.2023
Drawn By: James

DRAWING NO.
AD22-09

G1

Sheet No.
4 OF 12

MCY ENGINEERING, INC.
GLAZING CONSULTANTS
12781 MIRAMAR PARKWAY #301
MIRAMARI, FL 33027
P: 305 271 0117
www.MCYEngineering.com mcy@mcyengineering.com



NOTE: METAL STRUCTURES BY OTHERS MUST BE PROPERLY SECURED TO SUPPORT LOADS IMPOSED BY GLAZING SYSTEM AND TRANSFER THEM TO THE BUILDING STRUCTURES.

TYPICAL ANCHOR TYPES:
SEE ELEVATIONS FOR SPACING

TYPE "A": 1/4" DIA. ULTRACON+ BY 'DEWALT' (Fu=164 KSI, Fy=148 KSI)
DIRECTLY INTO CONCRETE
WITH 1 3/4" MIN. EMBED INTO HOLLOW BLOCK (JAMB ONLY)
WITH 1 1/4" MIN. EMBED

INTO GROUT FILLED BLOCKS (JAMB ONLY)
WITH 1 3/4" MIN. EMBED

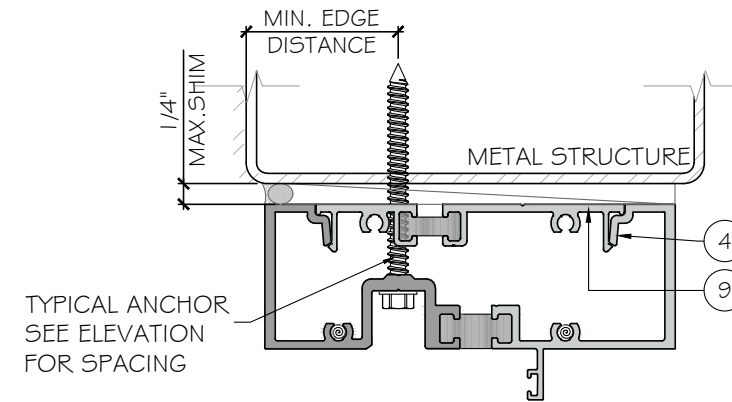
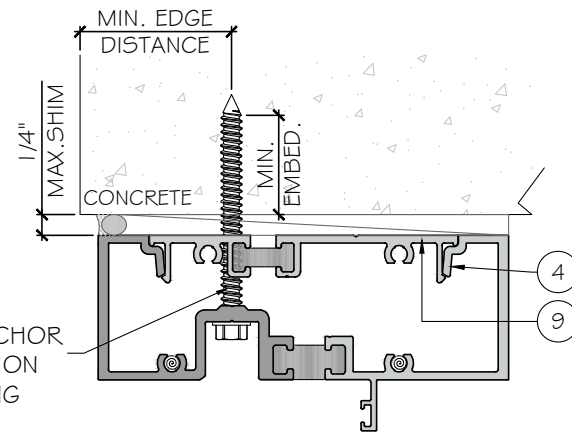
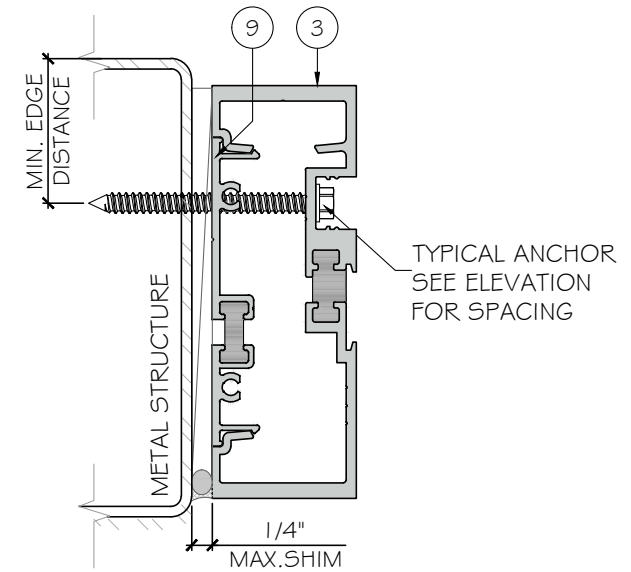
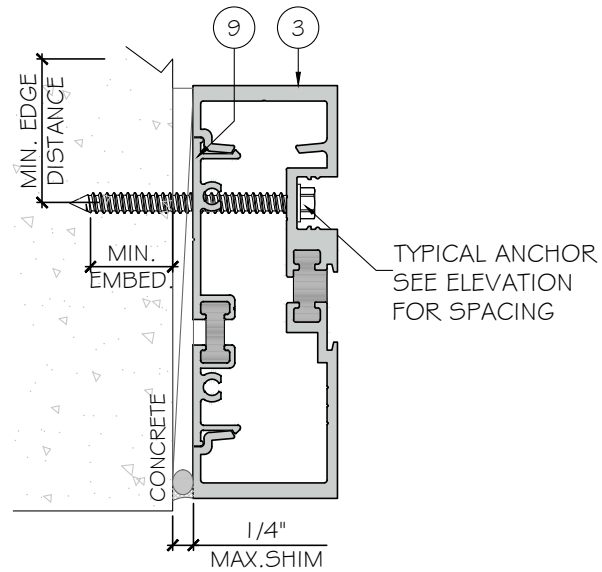
TYPE "B": 1/4" SELF DRILLING SCREW (GRADE 5) (Fu=120 KSI, Fy=90 KSI)
INTO APPROVED MULLIONS (1/8" THK. MIN.) INTO METAL STRUCTURE

STEEL: 1/8" MIN. (Fy=36 KSI MIN.)
ALUMINUM: 1/8" THK. MIN. (6063-T6 MIN.)
(3) THREADS MIN. PENETRATION BEYOND METAL SUBSTRATE
(STEEL IN CONTACT WITH ALUMINUM TO BE ISOLATED OR PAINTED)

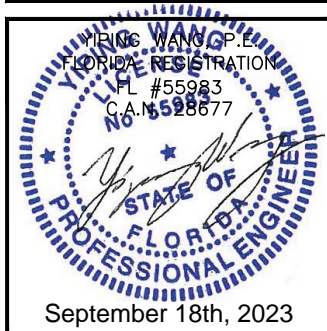
TYPICAL ANCHOR EDGE DISTANCE:
INTO CONCRETE AND MASONRY = 2 1/2" MIN.
INTO METAL STRUCTURE = 3/4" MIN.

WOOD SG = 0.55 MIN.
CONCRETE f'c = 3000 psi MIN.
C-90 HOLLOW/FILLED BLOCK fm = 2000 psi MIN.
NORMAL STRENGTH CMU (AT JAMB ONLY)

GLAZING BEAD AT FRAME SILL SEALED TO GLASS WITH DOW CORNING 791.
FRAME CORNERS SEALED WITH DOW CORNING 791 OR EQUAL COMPATIBLE



FLORIDA APPROVAL:
FL # 41359.1



MCY ENGINEERING, INC.
GLAZING CONSULTANTS
12781 MIRAMAR PARKWAY #301
MIRAMAR, FL 33027 P: 305 271 0117
www.MCYEngineering.com mcy@mcyengineering.com

ES-PSD5030T FRENCH DOOR - LMI
E.S. WINDOWS, INC.
10663 NE QUAYBRIDGE CT.
MIAMI, FL 33138
TEL: (305) 624-7775

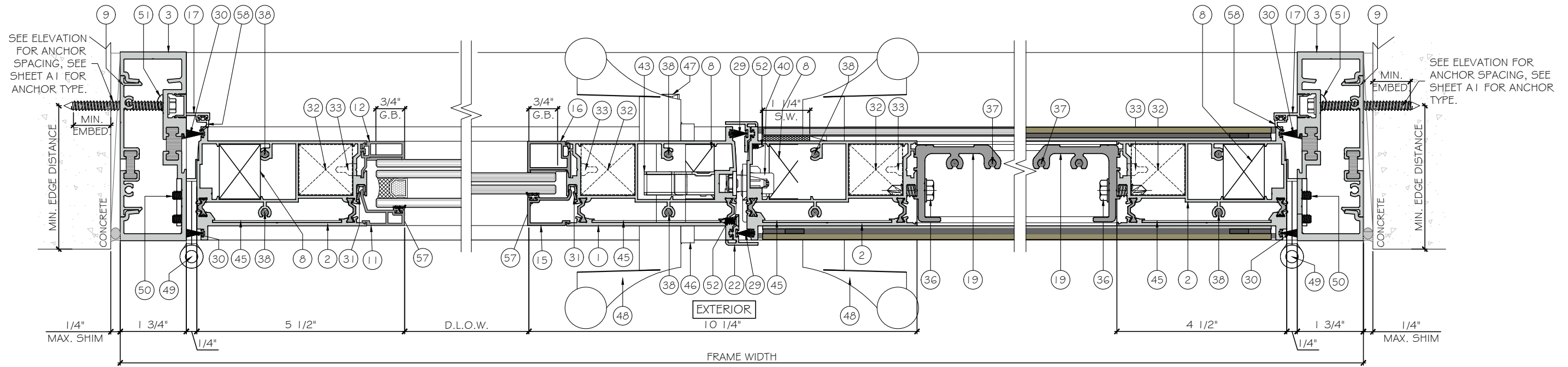
| Rev. No. | Date | Drawn By | Description |
|----------|------------|----------|--------------------|
| R2 | 09.18.2023 | James | UPDATE TO FBC 2023 |

Drawn Date: 09.18.2023
Drawn By: James

DRAWING NO.
AD22-09

A1

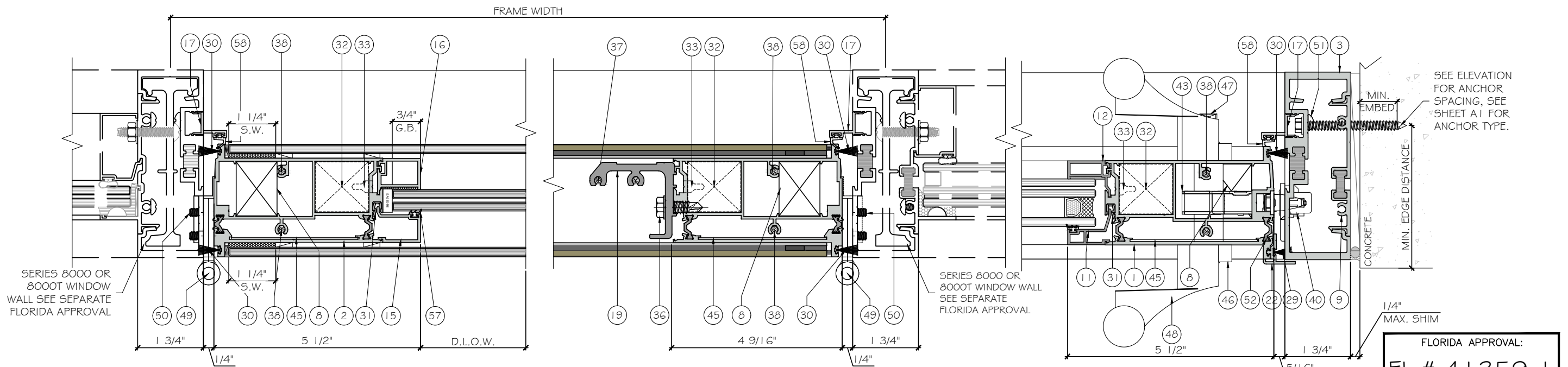
Sheet No.
5 OF 12



1 DETAIL
D1

2 DETAIL
D1

3 DETAIL
D1

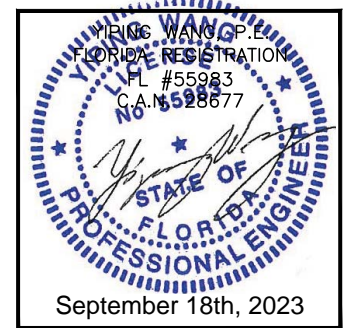


4 DETAIL
D1

5 DETAIL
D1

6 DETAIL
D1

FLORIDA APPROVAL:
FL # 41359.1



ES-PSD5030T FRENCH DOOR - LMI

E.S. WINDOWS, INC.
10663 NE QUAYBRID GE CT.
MIAMI, FL 33138

TEL. (305) 624-7775

MCY ENGINEERING, INC.
GLAZING CONSULTANTS

12781 MIRAMAR PARKWAY #301
MIRAMAR, FL 33027
P. 305 271 0117
www.MCYEngineering.com mcy@mcyengineering.com

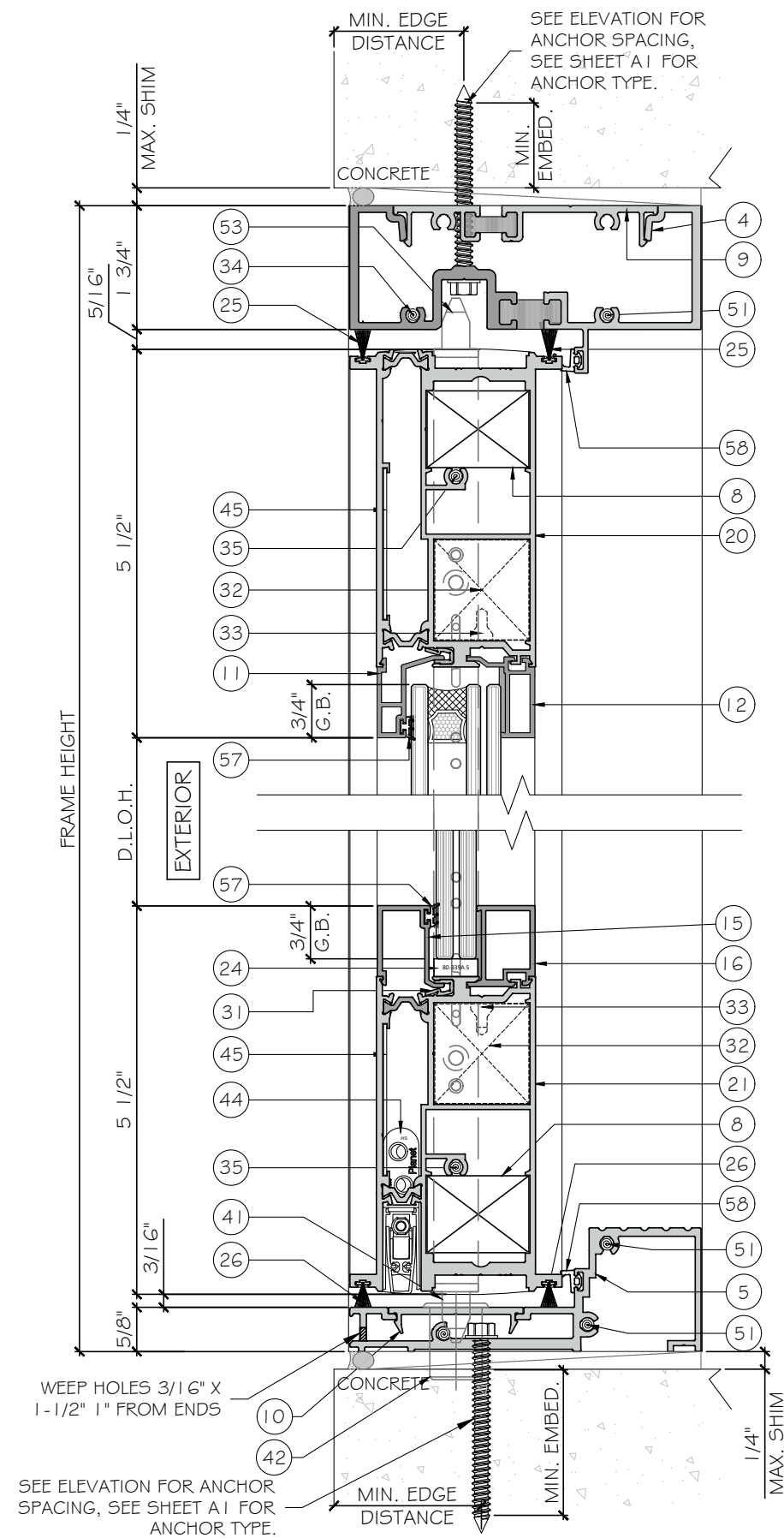
| Rev. No. | Date | Drawn By | Description |
|----------|------------|----------|--------------------|
| R2 | 09.18.2023 | James | UPDATE TO FBC 2023 |

Drawn Date: 09.18.2023
Drawn By: James

DRAWING NO.
AD22-09

D1

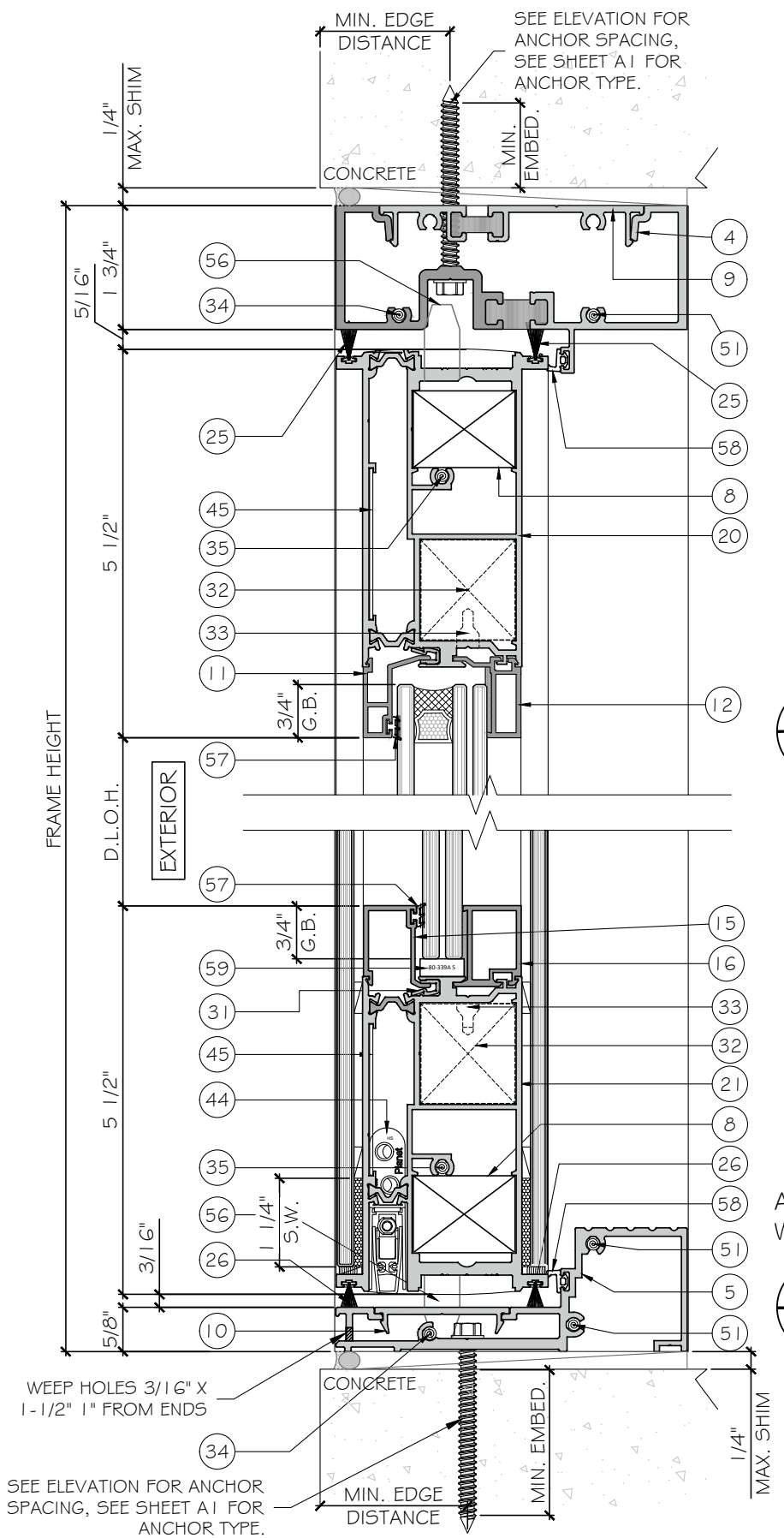
Sheet No.
6 OF 12



1
D3
DETAIL

APPROVED FOR WATER INFILTRATION

2
D3
DETAIL



3
D3
DETAIL

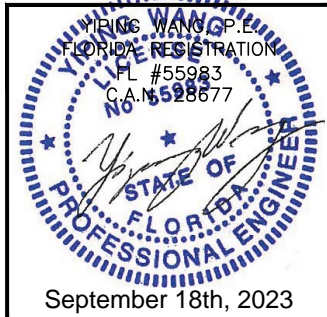
APPROVED FOR WATER INFILTRATION

4
D3
DETAIL

WEEP HOLES 3/16" X 1-1/2" FROM ENDS
SEE ELEVATION FOR ANCHOR SPACING, SEE SHEET A1 FOR ANCHOR TYPE.
MIN. EDGE DISTANCE
MIN. EMBED.
CONCRETE
MAX. SHIM 1/4"

WEEP HOLES 3/16" X 1-1/2" FROM ENDS
SEE ELEVATION FOR ANCHOR SPACING, SEE SHEET A1 FOR ANCHOR TYPE.
MIN. EDGE DISTANCE
MIN. EMBED.
CONCRETE
MAX. SHIM 1/4"

FLORIDA APPROVAL:
FL # 41359.1



| Rev. No. | Date | Drawn By | Description |
|----------|------------|----------|--------------------|
| R2 | 09.18.2023 | James | UPDATE TO FBC 2023 |

DRAWING NO.
AD22-09

LOCK SYSTEM

FOR DOUBLE DOOR:

MULTI POINT LOCKING SYSTEM WITH THUMB TURN OPERATOR ON THE INTERIOR AND KEY OPERATOR ON THE EXTERIOR AT 44 3/4" FROM BOTTOM AT LOCK STILE WITH (1) #1 2X1 1/2" FH MS. SURFACE MOUNT METALLIC STRIKE PLATE AT 44 3/4" FROM BOTTOM AT RIGHT PANEL LOCK STILE WITH (2)#8X3/4" FH SMS.

THE LOCKING RODS PENETRATES 1/2" INTO FRAME HEAD AND THRESHOLD.

FOR SINGLE DOOR:

MULTI POINT LOCKING SYSTEM WITH THUMB TURN OPERATOR ON THE INTERIOR AND KEY OPERATOR ON THE EXTERIOR AT 44 3/4" FROM BOTTOM AT RIGHT JAMB STILE WITH (1) #1 2X1 1/2" FH SMS. SURFACE MOUNT METALLIC STRIKE PLATE AT 44 3/4" FROM BOTTOM AT RIGHT FRAME JAMB WITH (2)#8X3/4" FH SMS.

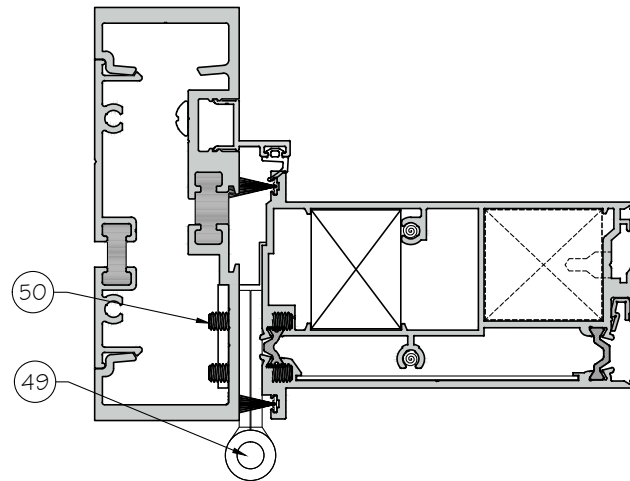
THE LOCKING RODS PENETRATES 1/2" INTO FRAME HEAD AND THRESHOLD.

HINGES:

BUTT HINGE A79 WITH (4) #1 2-24 X 3/4" FH MS.

FOR DOUBLE DOOR: LOCATED AT 6" FROM ENDS, @36". ADD ONE MORE HINGE WHEN USE G4 GLASS

FOR SINGLE DOOR: LOCATED AT 6" FROM ENDS, @22". ADD ONE MORE HINGE WHEN USE G4 GLASS



FLORIDA APPROVAL:
FL # 41359.1

YONG WANG P.E.
FLORIDA REGISTRATION
FL #55983
C.A. #5528677
STATE OF FLORIDA
PROFESSIONAL ENGINEER
September 18th, 2023

MCY ENGINEERING, INC.
GLAZING CONSULTANTS
12781 MIRAMAR PARKWAY #301
MIRAMAR, FL 33027 P: 305 271 0117
www.MCYEngineering.com mcy@mcyengineering.com

ES-PSD5030T FRENCH DOOR - LMI
E.S. WINDOWS, INC.
10663 NE QUAYBRID GE CT.
MIAMI, FL 33138
TEL. (305) 624-7775

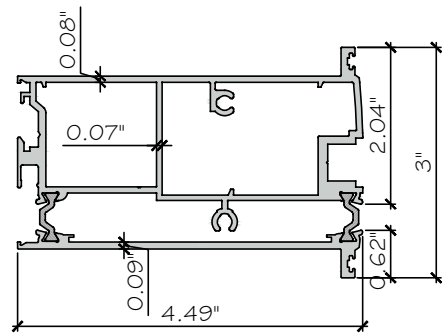
| Rev. No. | Date | Drawn By | Description |
|----------|------------|----------|--------------------|
| R2 | 09.18.2023 | James | UPDATE TO FBC 2023 |

Drawn Date: 09.18.2023
Drawn By: James

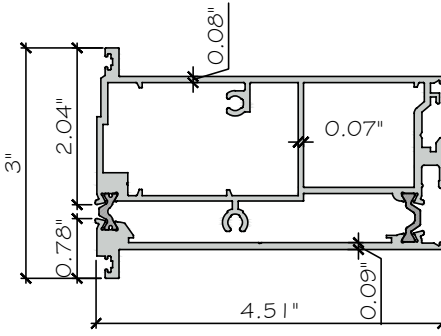
DRAWING NO.
AD22-09

HARDWARE

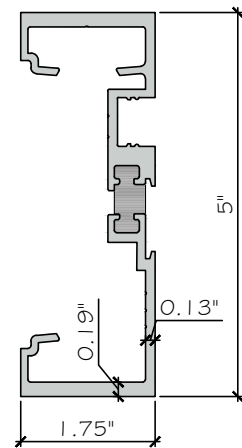
Sheet No.
9 OF 12



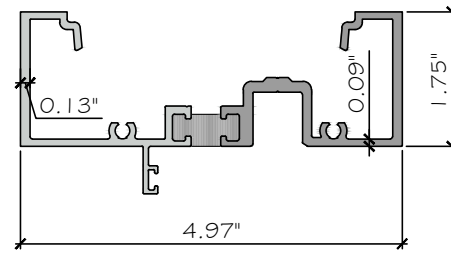
① LEAF STILE
006 FRONT + 007 BACK
ES-P5D5030T-501
ALUM.6063-T6



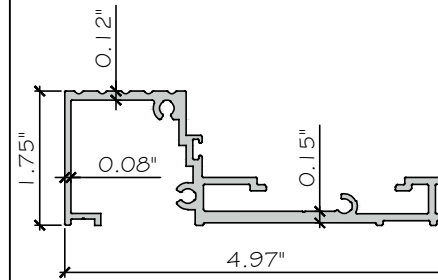
② INACTIVE STILE
023 FRONT + 030 BACK
ES-P5D5030T-506
ALUM.6063-T6



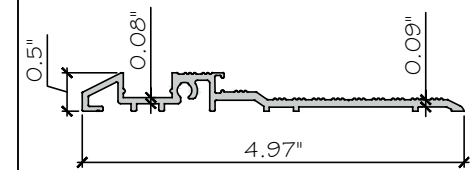
③ JAMB SWIN
ES-P5D5030T-024T
ALUM.6063-T6



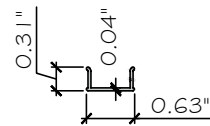
④ HEAD SWIN
ES-P5D5030T-026T
ALUM.6063-T6



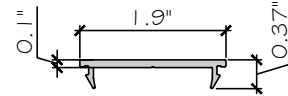
⑤ HIGH THRESHOLD
ES-P5D5030T-027
ALUM.6063-T6



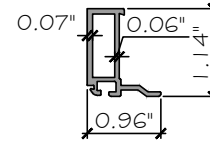
⑥ THRESHOLD
ES-P5D5030T-028
ALUM.6063-T6



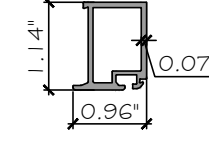
⑦ JAMB SCREW COVER
ES-EL114
ALUM.6063-T6



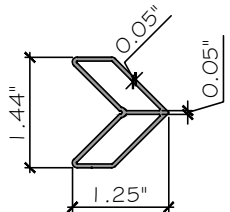
⑩ THRESHOLD COVER
ES-9027
ALUM.6063-T5



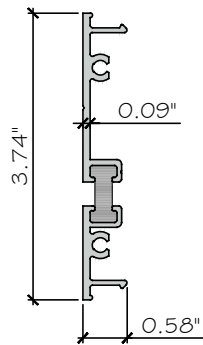
⑫ INTERIOR GLASS STOP
ES-P5D5030T-012
ALUM.6063-T5



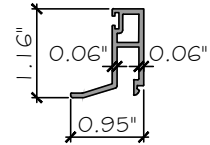
⑬ INTERIOR GLASS STOP
ES-P5D5030T-016
ALUM.6063-T5



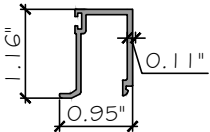
⑧ CORNER KEY
ES-45T-011
ALUM.6063-T5



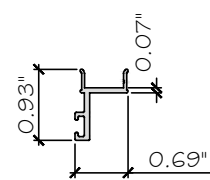
⑨ SHEAR CLIP
ES-8000T-003T
ALUM.6063-T6



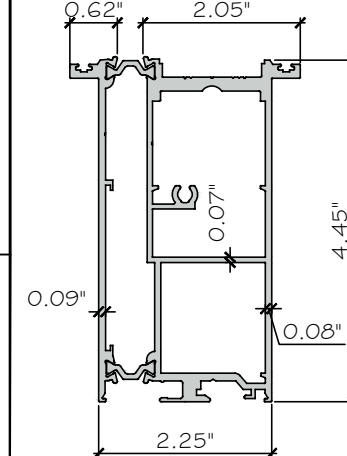
⑪ EXTERIOR GLASS STOP
ES-P5D5030T-011
ALUM.6063-T5



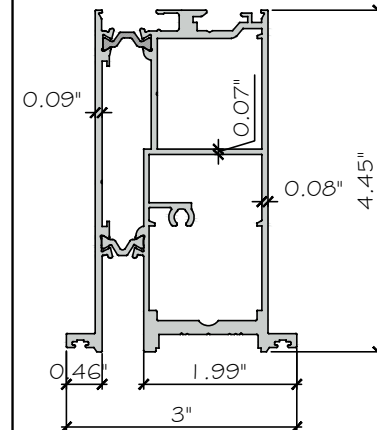
⑮ EXTERIOR GLASS STOP
ES-P5D5030T-015
ALUM.6063-T5



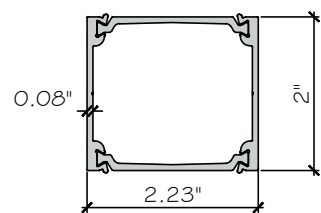
⑰ DOOR STOP
ES-P5D5030T-004
ALUM.6063-T5



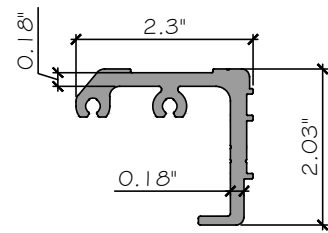
⑳ LEAF TOP
029 FRONT + 008 BACK
ES-P5D5030T-502
ALUM.6063-T6



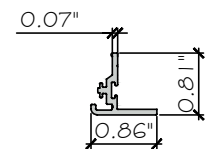
㉑ LEAF BOTTOM
009 FRONT + 010 BACK
ES-P5D5030T-503
ALUM.6063-T6



⑱ INTERMEDIATE PANELS
020 FRONT + 020 BACK
ES-P5D5030T-504
ALUM.6063-T6

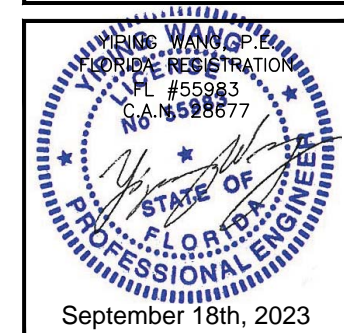


⑲ SHEAR BLOCK
ES-P5D5030T-017
ALUM.6063-T5



㉒ ASTRAGAL
ES-P5D5030T-022
ALUM.6063-T6

FLORIDA APPROVAL:
FL # 41359.1



ES-P5D5030T FRENCH DOOR - LMI

E.S. WINDOWS, INC.
10663 NE QUAYBRID GE CT.
MIAMI, FL 33138

TEL. (305) 624-7775

MCY ENGINEERING, INC.
GLAZING CONSULTANTS
12781 MIRAMAR PARKWAY #301
MIRAMAR, FL 33027 P: 305 271 0117
www.MCYEngineering.com mcy@mcyengineering.com

| Rev. No. | Date | Drawn By | Description |
|----------|------------|----------|--------------------|
| R2 | 09.18.2023 | James | UPDATE TO FBC 2023 |

Drawn Date: 09.18.2023
Drawn By: James

DRAWING NO.
AD22-09

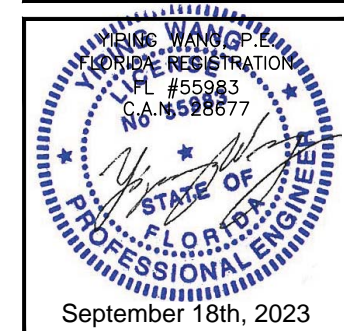
PARTS

Sheet No.
10 OF 12

BILL OF MATERIALS

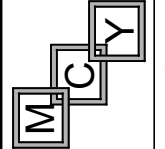
| CODE | PART | DESCRIPTION | MATERIAL |
|------|--------------------------------------|--|-----------------|
| 1 | ES-PSD5030T-501 | LEAF STILE 006 FRONT + 007 BACK | ALUM.G063-T6 |
| 2 | ES-PSD5030T-506 | INACTIVE STILE 023 FRONT + 030 BACK | ALUM.G063-T6 |
| 3 | ES-PSD5030T-024T | JAMB SWIN | ALUM.G063-T6 |
| 4 | ES-PSD5030T-026T | HEAD SWIN | ALUM.G063-T6 |
| 5 | ES-PSD5030T-027 | HIGH THRESHOLD | ALUM.G063-T6 |
| 6 | ES-PSD5030T-028 | THRESHOLD | ALUM.G063-T6 |
| 7 | ES-EL114 | JAMB SCREW COVER | ALUM.G063-T6 |
| 8 | ES-45T-011 | CORNER KEY | ALUM.G063-T5 |
| 9 | ES-8000T-003T | SHEAR CLIP | ALUM.G063-T6 |
| 10 | ES-9027 | THRESHOLD COVER | ALUM.G063-T5 |
| 11 | ES-PSD5030T-011 | EXTERIOR GLASS STOP | ALUM.G063-T5 |
| 12 | ES-PSD5030T-012 | INTERIOR GLASS STOP | ALUM.G063-T5 |
| 13 | NOT USED | | |
| 14 | NOT USED | | |
| 15 | ES-PSD5030T-015 | EXTERIOR GLASS STOP | ALUM.G063-T5 |
| 16 | ES-PSD5030T-016 | INTERIOR GLASS STOP | ALUM.G063-T5 |
| 17 | ES-PSD5030T-004 | DOOR STOP | ALUM.G063-T5 |
| 18 | ES-PSD5030T-504 | INTERMEDIATE PANELS 020 FRONT + 020 BACK | ALUM.G063-T6 |
| 19 | ES-PSD5030T-017 | SHEAR BLOCK | ALUM.G063-T5 |
| 20 | ES-PSD5030T-502 | LEAF TOP 029 FRONT + 008 BACK | ALUM. G063-T6 |
| 21 | ES-PSD5030T-503 | LEAF BOTTOM 009 FRONT + 010 BACK | ALUM. G063-T6 |
| 22 | ES-PSD5030T-022 | ASTRAGAL | ALUM. G063-T6 |
| 23 | NOT USED | | |
| 24 | EMP-682 80-339A S | SETTING BLOCK @ LAMINATED GLASS, 80±5SHORE A | SILICONE |
| 25 | FELPA W3354 INK | PILE STILE AND LEAF TOP | POLYPROPYLENE |
| 26 | FELPA W3342 INK | PILE BOTTOM FOR HIGH SILL | POLYPROPYLENE |
| 27 | FELPA W3323 INK | PILE BOTTOM FOR THRESHOLD INTERIOR | POLYPROPYLENE |
| 28 | FELPA W3335 INK | PILE BOTTOM FOR THRESHOLD EXTERIOR | POLYPROPYLENE |
| 29 | FELPA W3348 INK | PILE ASTRAGAL | POLYPROPYLENE |
| 30 | FELPA W3359 INK | PILE HINGE STILE | POLYPROPYLENE |
| 31 | ES-UN8030-301 | ISOLATOR | RIGID PVC |
| 32 | 5039/50 CORNER JOINT | ESCUADRA DE ENSAMBLE | ALUMINUM |
| 33 | VILM5X14_D8 CORNER SCREW | CORNER SCREW (5039/50) | STAINLESS STEEL |
| 34 | TOR #12*1 PAN NATURAL INOX | FRAME ASSEMBLY SCREW | STAINLESS STEEL |
| 35 | TOR #12 x 2" PHIL FLAT TYPE A 18-8SS | FOR LEAF ASSEMBLY | STAINLESS STEEL |
| 36 | TOR #14 x 3/4" HWH TYPE AB | FOR SHEAR BLOCK | STAINLESS STEEL |
| 37 | TOR# 12 x 3/4" PH | FOR SHEAR BLOCK INTERMEDIATE (Panelex) | STAINLESS STEEL |
| 38 | #12 * 2-1/2" F.H | FOR LEAF ASSEMBLY TOP/BOTTOM | STAINLESS STEEL |
| 39 | #14*3 1/4 HWH(390) ELCO | FOR INSTALLATION JAMB/SILL | STAINLESS STEEL |
| 40 | 3479715 - LSB 8050-752 - LEFT | STRIKER | STAINLESS STEEL |

FLORIDA APPROVAL:
FL # 41359.1



ES-PSD5030T FRENCH DOOR - LMI

E.S. WINDOWS, INC.
10663 NE QUAYBRIDGE CT.
MIAMI, FL 33138
TEL. (305) 624-7775



MCY ENGINEERING, INC.
GLAZING CONSULTANTS
12781 MIRAMAR PARKWAY #301
MIRAMAR, FL 33027 P: 305 271 0117
www.MCYEngineering.com mcy@mcyengineering.com

| Rev. No. | Date | Drawn By | Description |
|----------|------------|----------|--------------------|
| R2 | 09.18.2023 | James | UPDATE TO FBC 2023 |

Drawn Date: 09.18.2023
Drawn By: James

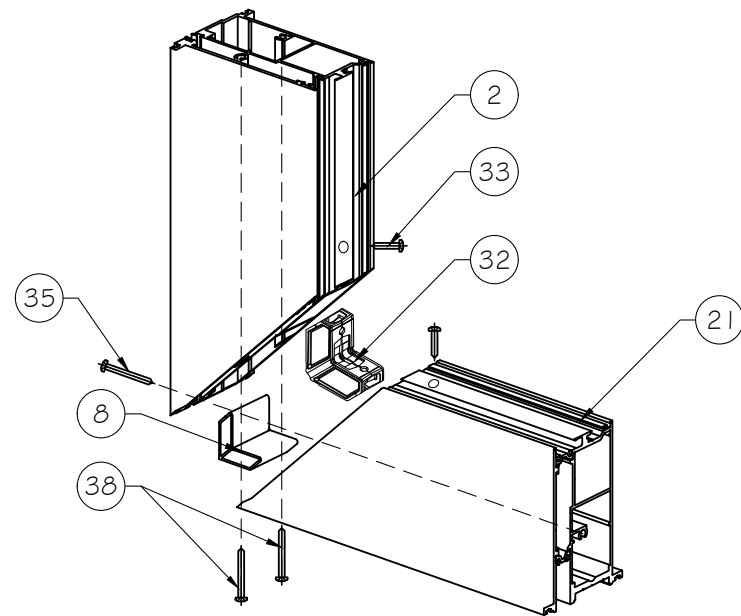
DRAWING NO.
AD22-09

BOM

Sheet No.
11 OF 12

BILL OF MATERIALS

| CODE | PART | DESCRIPTION | MATERIAL |
|------|---------------------------------------|--|--------------------------|
| 41 | 3145903 - 7029 SHOOTBOLT | SHOOTBOLT BOTTOM | STAINLESS STEEL |
| 42 | 3466977 - 881-00088 FLOOR KEEPER | ADJUSTABLE SLEEVE (1 FOR SHOOTBOLT BOTTOM) | STAINLESS STEEL |
| 43 | 3492553 - A52600 MULTIPONT LOCK | LOCK | STAINLESS STEEL |
| 44 | PLANET HS DROP SEAL | DROP SEAL | STAINLESS STEEL |
| 45 | ESC-004 ES-PSD5030T-E01 | ESC-004 ES-PSD5030T-E01 | --- |
| 46 | PS01-6208-* ROSE COVER | COVER CYLINDER | STAINLESS STEEL |
| 47 | DLO1-6253-* CYLINDER 40/40 TURN/KEY | CYLINDER | BRASS |
| 48 | SHPRO316OLPNSGO1250 DOOR THICK 2 1/4" | PULL-PULL | AISI 316 STAINLESS STEEL |
| 49 | HINGE A79 | BUTT HINGE | STAINLESS STEEL |
| 50 | TOR #12-24 x 1/2" FH | HINGE SCREW (STILE) | STAINLESS STEEL |
| 51 | TOR #12 x 1 1/2" P.H. S.M.S. ST/ST | FOR ASSEMBLY (ES-8000 FRAME) | STAINLESS STEEL |
| 52 | TOR #8 x 1/2 F.H. | FOR ASTRAGAL | STAINLESS STEEL |
| 53 | 3451082 7037-SHOOTBOLT | SHOOTBOLT TOP | STAINLESS STEEL |
| 54 | THRESHOLD CLIP ACERO INOX_LEFT | THRESHOLD CLIP LEFT | STAINLESS STEEL |
| 55 | THRESHOLD CLIP ACERO INOX_RIGHT | THRESHOLD CLIP RIGHT | STAINLESS STEEL |
| 56 | VARILLA STEEL ROD | STEEL ROD 9 1/4 PLATED FLUSHBOLT | STAINLESS STEEL |
| 57 | EMP-768 ES-EL100-GO2A | GLAZING GASKET | SILICONE |
| 58 | EMP-501 ES-EL300-GO1E | SEAL GASKET | EPDM |
| 59 | EMP-471 ES-7530-B02A S | SETTING BLOCK @ INSULATED LAMINATED GLASS, 80±5SHORE A | SILICONE |
| 60 | - | 1/8" THK SETTING BLOCK @ G3, 80±5SHORE A | SILICONE |



CORNER ASSEMBLY

MCY ENGINEERING, INC.
 GLAZING CONSULTANTS
 12781 MIRAMAR PARKWAY #301
 MIRAMAR, FL 33027 P: 305 271 0117
 www.MCYEngineering.com mcy@mcyengineering.com

ES-PSD5030T FRENCH DOOR - LMI
 E.S. WINDOWS, INC.
 10663 NE QUAYBRIDGE CT.
 MIAMI, FL 33138
 TEL: (305) 624-7775

FLORIDA APPROVAL:
FL # 41359.1

September 18th, 2023

| Rev. No. | Date | Drawn By | Description |
|----------|------------|----------|--------------------|
| R2 | 09.18.2023 | James | UPDATE TO FBC 2023 |
| | | | |
| | | | |

Drawn Date: 09.18.2023
 Drawn By: James
 DRAWING NO. AD22-09
BOM
 Sheet No. 12 OF 12