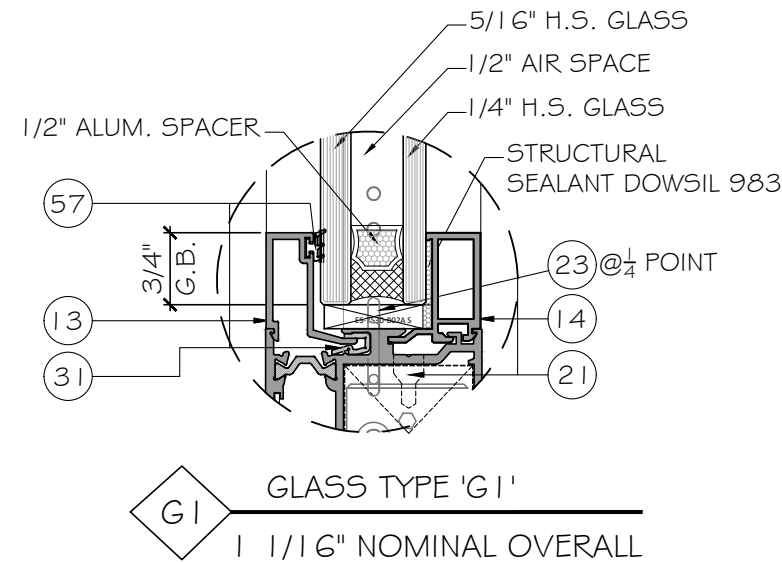


E.S. WINDOWS, INC. ES-PSD 5030T FRENCH DOOR - N.I.



GENERAL NOTES:

- THIS PRODUCT HAS BEEN DESIGNED AND TESTED TO COMPLY WITH THE REQUIREMENTS OF THE 7TH EDITION FLORIDA BUILDING CODE (2020)/ 8TH EDITION FLORIDA BUILDING CODE (2023) NOT INCLUDING HIGH VELOCITY HURRICANE ZONE (NON-HVHZ).
- DOORS RATED FOR NON IMPACT. IMPACT SHUTTERS ARE REQUIRED WHEN USED IN HIGH VELOCITY HURRICANE ZONE (HVHZ).
- DOORS APPROVED FOR WATER INFILTRATION WHEN HIGH THRESHOLD TYPE USED.
- ANCHORS SHALL BE AS LISTED, SPACED AS SHOWN ON DETAILS. ANCHORS EMBEDMENT TO BASE MATERIAL SHALL BE BEYOND WALL DRESSING OR STUCCO.
- ANCHORING OR LOADING CONDITIONS NOT SHOWN IN THESE DETAILS ARE NOT PART OF THIS APPROVAL.
- MATERIALS INCLUDING BUT NOT LIMITED TO STEEL/METAL SCREWS THAT COME INTO CONTACT WITH OTHER DISSIMILAR MATERIALS SHALL MEET THE REQUIREMENTS OF THE 7TH EDITION FLORIDA BUILDING CODE (2020)/ 8TH EDITION FLORIDA BUILDING CODE (2023) SECTION AS APPLICABLE.
- METAL STRUCTURES BY OTHERS TO BE DESIGNED TO SUPPORT THE LOADS IMPOSED BY THIS GLAZING SYSTEM AND TO TRANSFER SUCH LOADS TO THE BUILDING MAIN STRUCTURE.
- ULTIMATE LOAD OBTAINED FROM ASCE 7-16/ ASCE 7-22, MULTIPLY BY 0.6 SHALL BE LESS THAN OR EQUAL TO MAX. DESIGN LOAD IN THIS DOCUMENT. THE DESIGN LOADS SHOWN IN THIS DOCUMENT ARE ALLOWABLE DESIGN LOADS.
- MANUFACTURER'S LABEL SHALL BE LOCATED ON A READILY VISIBLE LOCATION IN ACCORDANCE WITH SECTION 1709.9.3 OF FLORIDA BUILDING CODE LABELING TO COMPLY WITH SECTION 1709.9.2.

USE CHARTS AS FOLLOWS.

- STEP 1:** DETERMINE DESIGN WIND LOAD REQUIREMENTS BASED ON WIND VELOCITY, BLDG. HEIGHT, WIND ZONE USING APPLICABLE ASCE 7-16/ ASCE 7-22 STANDARD OR WIND TUNNEL REPORTS.
- STEP 2:** SEE SHEET E1 FOR TYPICAL DOOR ELEVATION. SEE SHEET COVER FOR GLASS OPTIONS
- STEP 3:** SEE SHEET A1 FOR ANCHOR OPTIONS. SEE SHEET E1 FOR NUMBER OF ANCHORS REQUIRED.
- STEP 4:** THE LOWEST VALUE RESULTING FROM STEPS 2 & 3 THAT EXCEED THE DESIGN WIND PRESSURES DETERMINED THRU STEP 1 SHALL APPLY TO ENTIRE SYSTEM.

NOTE:
GLASS COMPLIES WITH ASTM E1300-09 (3 SEC. GUSTS).

ABBREVIATIONS AND SYMBOLS	
D.L.O. - DAYLITE OPENING	
F.H. - FRAME HEIGHT	
F.W. - FRAME WIDTH	
W/ - WITH	
W/O - WITHOUT	
O.C. - ON CENTER	

LIMITATIONS OF USE

A- THIS PRODUCT EVALUATION DOCUMENT (P.E.D.) PREPARED BY THIS ENGINEER IS GENERIC AND DOES NOT PROVIDE INFORMATION FOR A SITE SPECIFIC PROJECT. I.e. WHERE THE SITE CONDITIONS DEVIATE FROM THE P.E.D.

B- CONTRACTOR TO BE RESPONSIBLE FOR THE SELECTION, PURCHASE AND INSTALLATION OF THIS PRODUCT BASED ON THIS PRODUCT EVALUATION PROVIDED HE/SHE DOES NOT DEVIATE FROM THE CONDITIONS DETAILED ON THIS DOCUMENT.

C- THIS PRODUCT EVALUATION DOCUMENT WILL BE CONSIDERED INVALID IF ALTERED BY ANY MEANS.

D- SITE SPECIFIC PROJECTS SHALL BE PREPARED BY A FLORIDA REGISTERED ENGINEER OR ARCHITECT WHICH WILL BECOME THE ENGINEER OF RECORD (E.O.R.) FOR THE PROJECT AND WHO WILL BE RESPONSIBLE FOR THE PROPER USE OF THE P.E.D ENGINEER OF RECORD, ACTING AS A DELEGATED ENGINEER TO THE P.E.D ENGINEER SHALL SUBMIT TO THIS LATTER THE SITE SPECIFIC DRAWINGS FOR REVIEW.

E- THIS P.E.D. SHALL BEAR THE DATE AND ORIGINAL SEAL AND SIGNATURE OF THE PROFESSIONAL ENGINEER OF RECORD THAT PREPARED IT.

FLORIDA APPROVAL:
FL # 41359.2

YIPING WANG
FLORIDA REGISTRATION
FL # 55983
C.A.N. 08877

STATE OF FLORIDA
PROFESSIONAL ENGINEER

September 18th, 2023

MCY ENGINEERING, INC.
GLAZING CONSULTANTS

12781 MIRAMAR PARKWAY #301
MIRAMAR, FL 33027 P: 305 271 0117
www.MCYEngineering.com mcy@mcyengineering.com

ES-PSD5030T FRENCH DOOR - NI

E.S. WINDOWS, INC.
10663 NE QUAYBRID GE CT.
MIAMI, FL 33138
TEL: (305) 624-7775

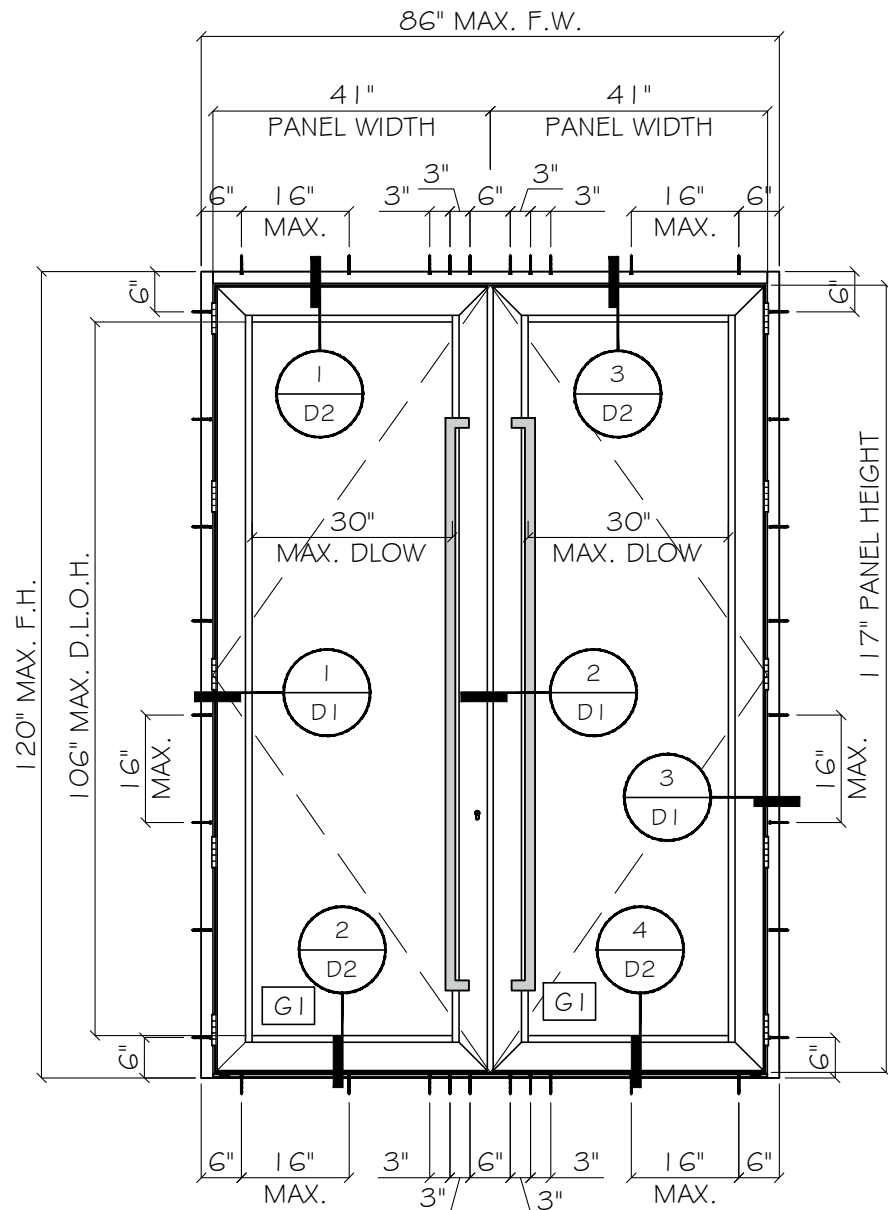
Rev. No.	Date	Drawn By	Description
R2	09.18.2023	James	UPDATE TO FBC 2023

Drawn Date: 09.18.2023 Drawn By: James

DRAWING NO.
AD22-12

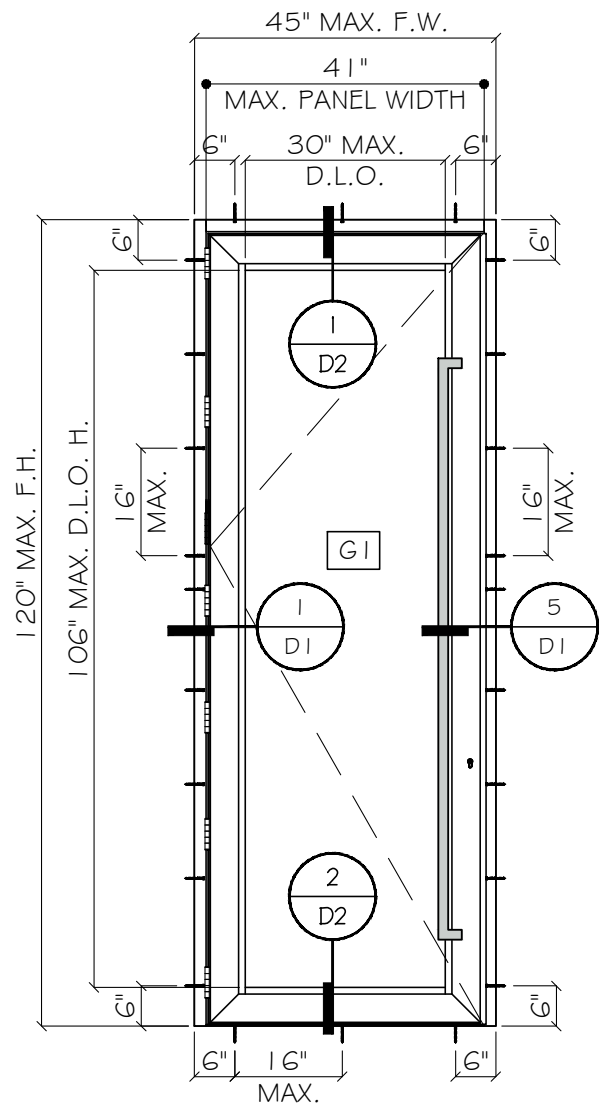
cover

Sheet No.
1 OF 9



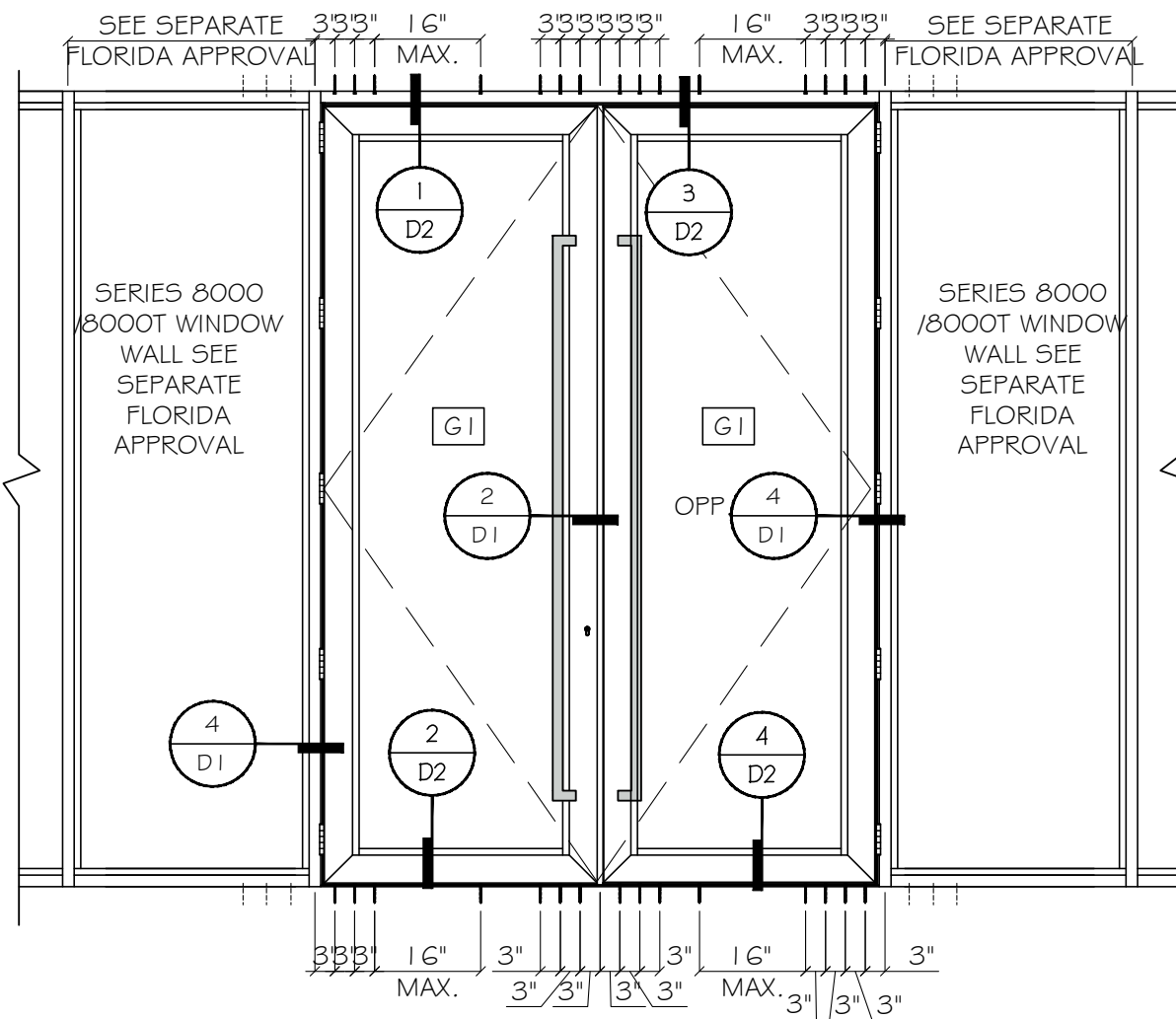
TYPICAL EXTERIOR ELEVATIONS

DESIGN LOADS: ±95 PSF
(FOR SIZE SHOWN ABOVE OR
SMALLER AS PERMITTED BY FBC)



TYPICAL EXTERIOR ELEVATIONS

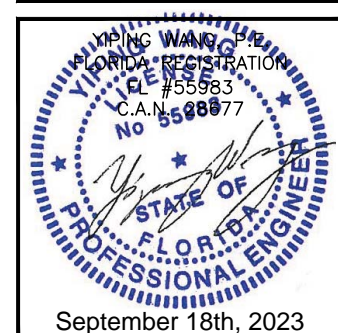
DESIGN LOADS: ±95 PSF
(FOR SIZE SHOWN ABOVE OR
SMALLER AS PERMITTED BY FBC)



TYPICAL EXTERIOR ELEVATIONS

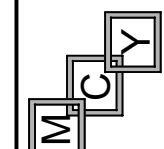
APPROVED CONFIGURATION

FLORIDA APPROVAL:
FL # 41359.2



ES-PSD5030T FRENCH DOOR - NI

E.S. WINDOWS, INC.
10663 NE QUAYBRID GE CT.
MIAMI, FL 33138
TEL. (305) 624-7775



MCY ENGINEERING, INC.
GLAZING CONSULTANTS
12781 MIRAMAR PARKWAY #301
MIRAMAR, FL 33027 P: 305 271 0117
www.MCYEngineering.com mcy@mcyengineering.com

Rev. No.	Date	Drawn By	Description
R2	09.18.2023	James	UPDATE TO FBC 2023
DRAWING NO. AD22-12			
Sheet No. 2 OF 9			

TYPICAL ANCHOR TYPES:
SEE ELEVATIONS FOR SPACING

TYPE "A": 1/4" DIA. ULTRACON+ BY 'DEWALT' (Fu=164 KSI, Fy=148 KSI)
DIRECTLY INTO CONCRETE
WITH 1 3/4" MIN. EMBED

INTO HOLLOW BLOCK (JAMB ONLY)
WITH 1 1/4" MIN. EMBED

INTO GROUT FILLED BLOCKS (JAMB ONLY)
WITH 1 3/4" MIN. EMBED

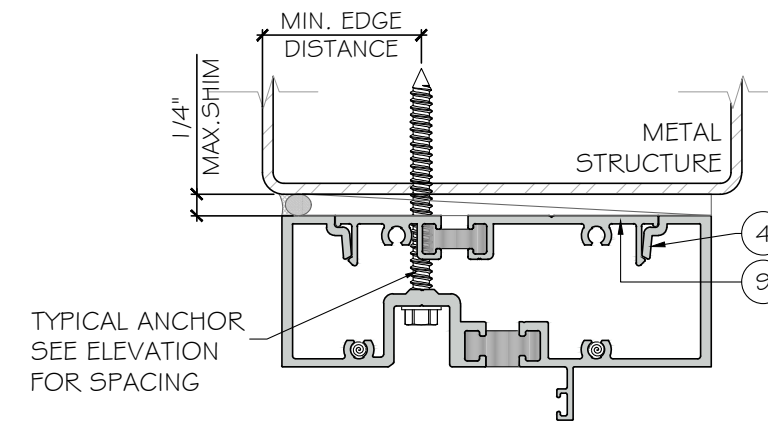
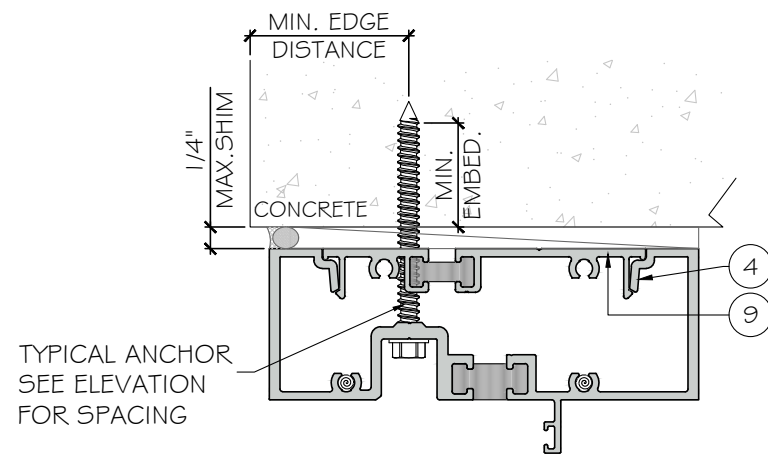
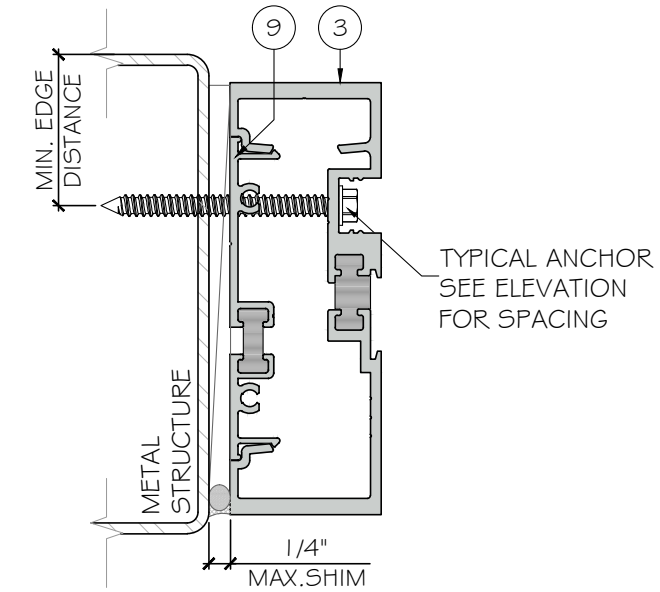
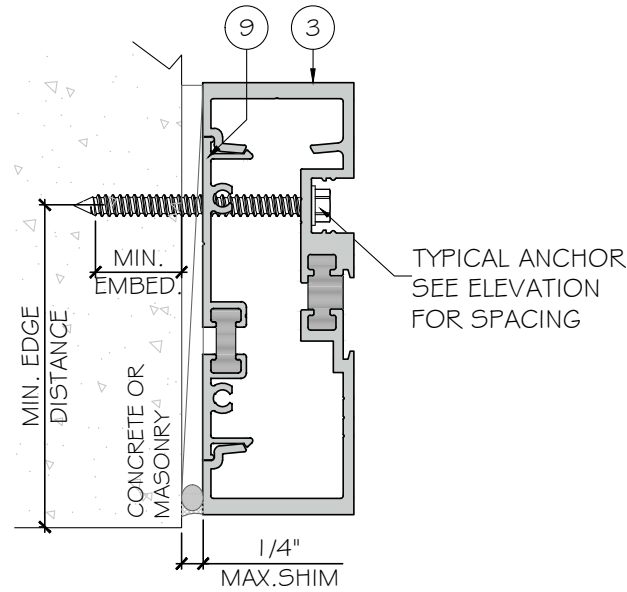
TYPE "B": 1/4" SELF DRILLING SCREW (GRADE 5) (Fu=120 KSI, Fy=90 KSI)
INTO APPROVED MULLIONS
(1/8" THK. MIN.) INTO METAL STRUCTURE

STEEL: 1/8" MIN. (Fy=36 KSI MIN.)
ALUMINUM: 1/8" THK. MIN. (6063-T6 MIN.)
(3) THREADS MIN. PENETRATION BEYOND METAL SUBSTRATE
(STEEL IN CONTACT WITH ALUMINUM TO BE ISOLATED OR PAINTED)

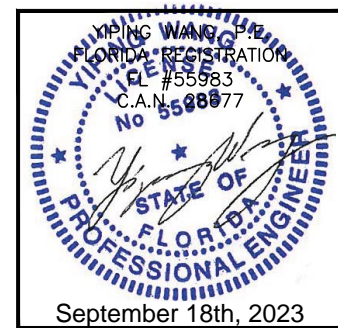
TYPICAL ANCHOR EDGE DISTANCE:
INTO CONCRETE AND MASONRY = 2 1/2" MIN.
INTO METAL STRUCTURE = 3/4" MIN.

WOOD SG = 0.55 MIN.
CONCRETE fc = 3000 psi MIN.
C-90 HOLLOW/FILLED BLOCK fm = 2000 psi MIN.
NORMAL STRENGTH CMU (AT JAMB ONLY)

GLAZING BEAD AT FRAME SILL SEALED TO GLASS WITH DOW CORNING 791.
FRAME CORNERS SEALED WITH DOW CORNING 791 OR EQUAL COMPATIBLE



FLORIDA APPROVAL:
FL # 41359.2



ES-PSD5030T FRENCH DOOR - NI
E.S. WINDOWS, INC.
10663 NE QUAYBRID GE CT.
MIAMI, FL 33138
TEL. (305) 624-7775

Rev. No.	Date	Drawn By	Description
R2	09.18.2023	James	UPDATE TO FBC 2023

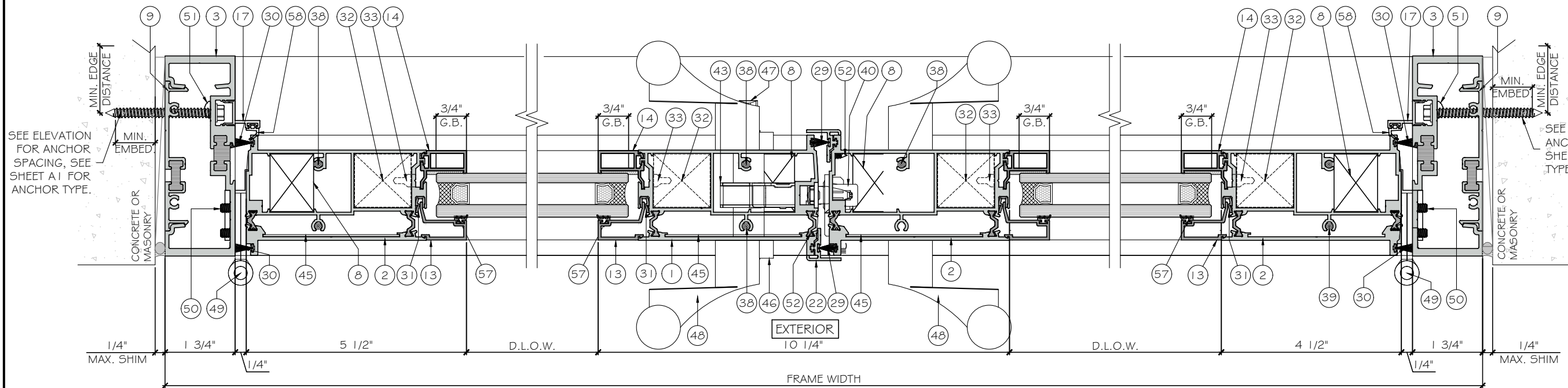
Drawn Date: 09.18.2023
Drawn By: James

DRAWING NO.
AD22-12

A1

Sheet No.
3 OF 9

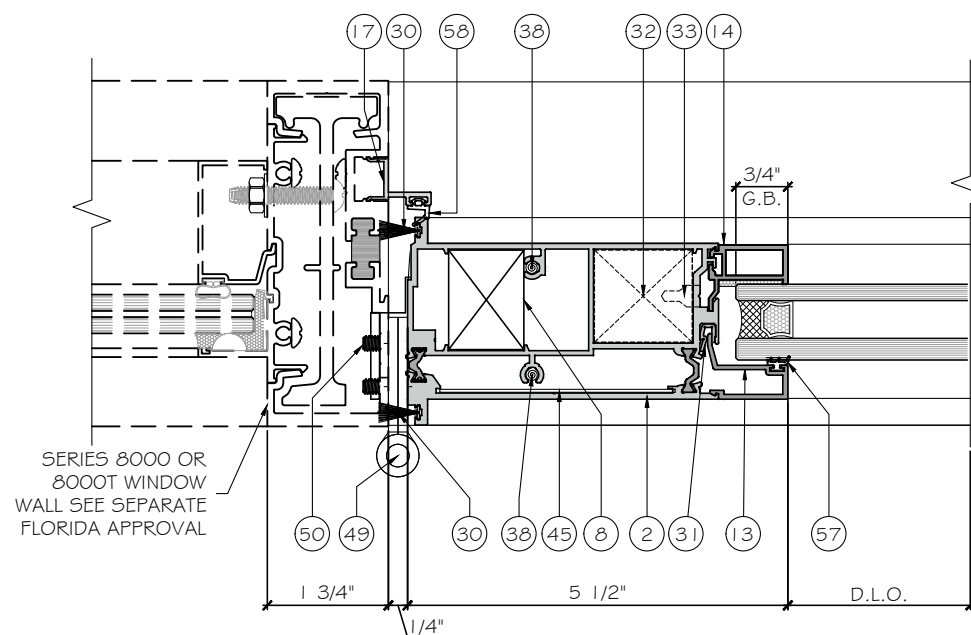
MCY ENGINEERING, INC.
GLAZING CONSULTANTS
12781 MIRAMAR PARKWAY #301
MIRAMARI, FL 33027 P: 305 271 0117
www.MCYEngineering.com mcy@mcyengineering.com



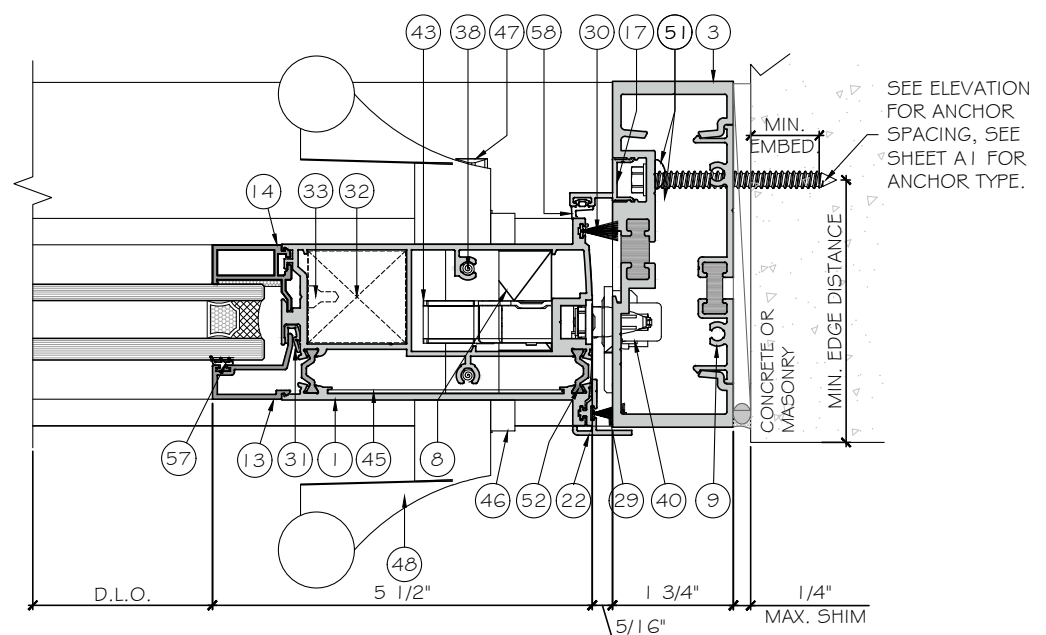
1 DETAIL
D1

2 DETAIL
D1

3 DETAIL
D1

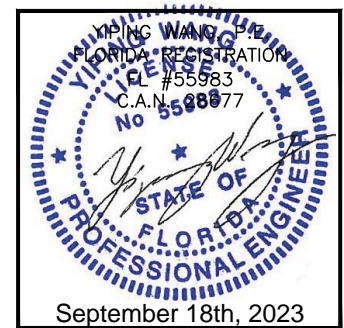


4 DETAIL
D1



5 DETAIL
D1

FLORIDA APPROVAL:
FL # 41359.2



MCY ENGINEERING, INC.
GLAZING CONSULTANTS
12781 MIRAMAR PARKWAY #301
MIRAMAR, FL 33027
P: 305 271 0117
www.MCYEngineering.com mcy@mcyengineering.com

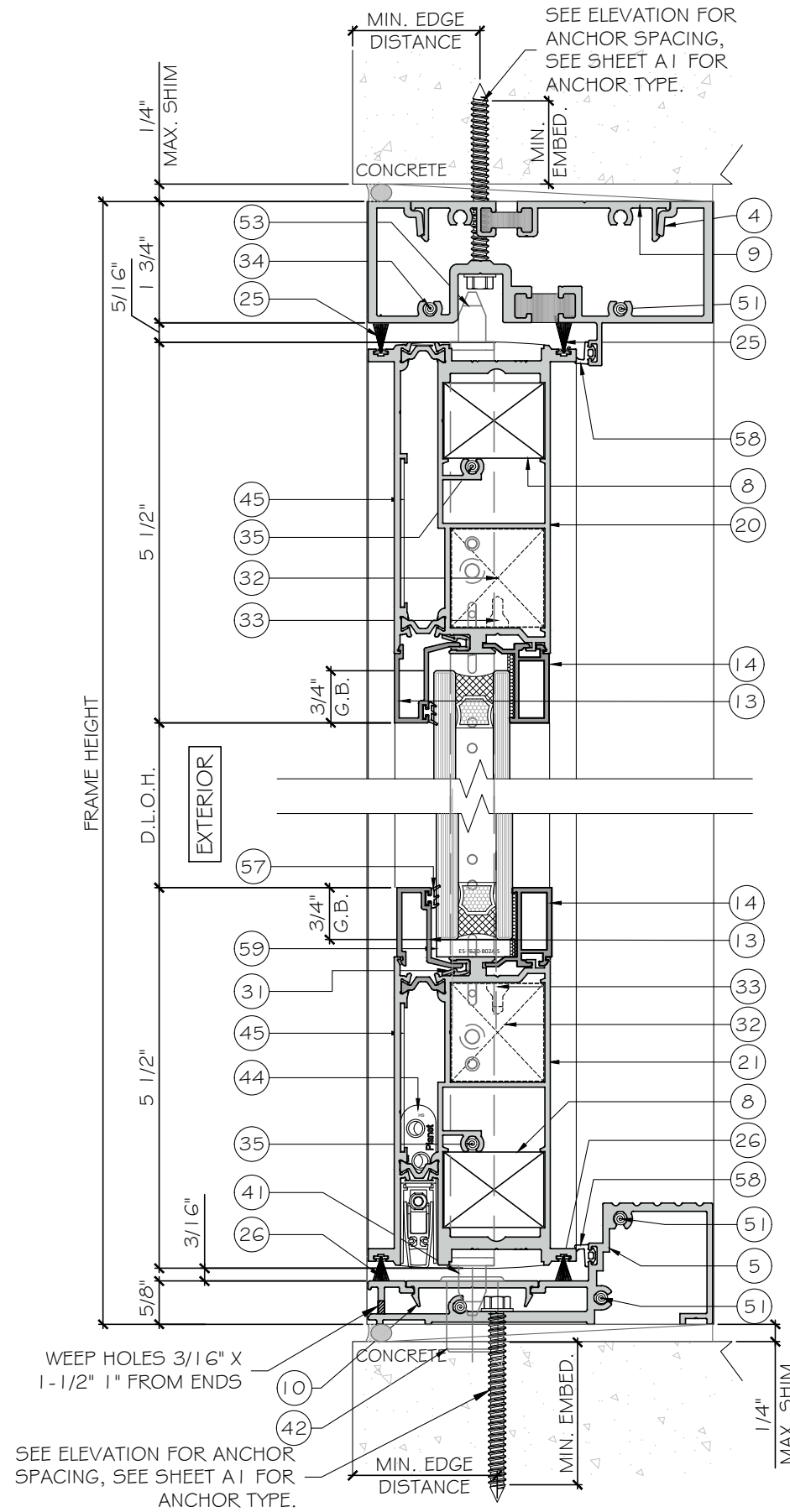
ES-PSD5030T FRENCH DOOR - NI
E.S. WINDOWS, INC.
10663 NE QUAYBRID GE CT.
MIAMI, FL 33138
TEL. (305) 624-7775

Rev. No.	Date	Drawn By	Description
R2	09.18.2023	James	UPDATE TO FBC 2023

Drawn Date: 09.18.2023
Drawn By: James

DRAWING NO.
AD22-12

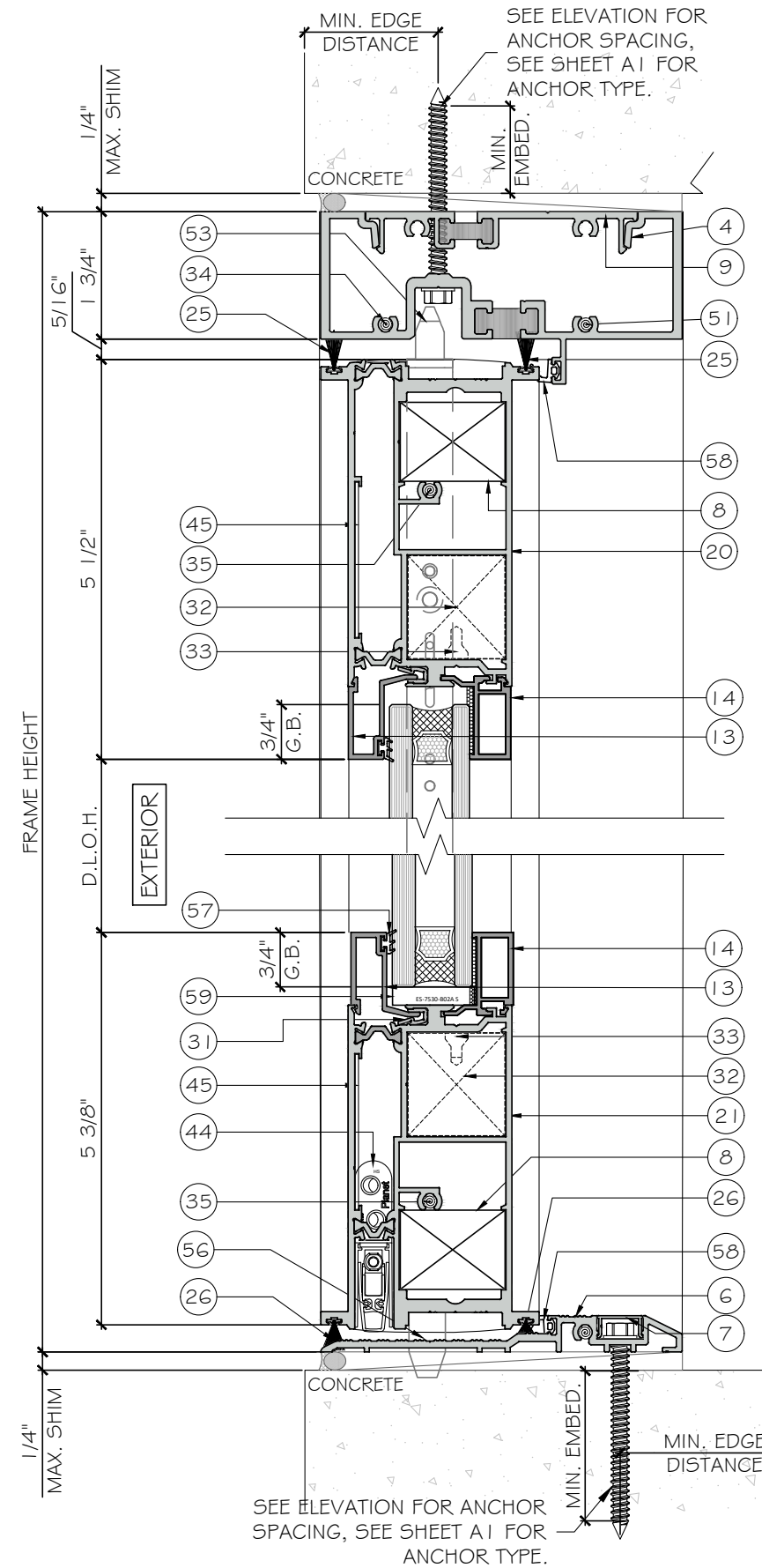
Sheet No.
4 OF 9



1
D2
DETAIL

APPROVED FOR
WATER INFILTRATION

2
D2
DETAIL

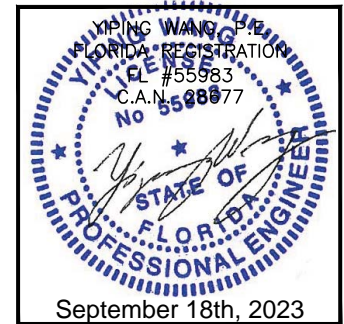


3
D2
DETAIL

NOT APPROVED FOR
WATER INFILTRATION

4
D2
DETAIL
THRESHOLD
OPTION

FLORIDA APPROVAL:
FL # 41359.2



Rev. No.	Date	Drawn By	Description
R2	09.18.2023	James	UPDATE TO FBC 2023

Drawn Date	Drawn By
09.18.2023	James
DRAWING NO.	
AD22-12	
Sheet No.	
5 OF 9	

LOCK SYSTEM

FOR DOUBLE DOOR:

MULTI POINT LOCKING SYSTEM WITH THUMB TURN OPERATOR ON THE INTERIOR AND KEY OPERATOR ON THE EXTERIOR AT 44 3/4" FROM BOTTOM AT LOCK STILE WITH (1) #1 2X1 1/2" FH MS. SURFACE MOUNT METALLIC STRIKE PLATE AT 44 3/4" FROM BOTTOM AT RIGHT PANEL LOCK STILE WITH (2)#8X3/4" FH SMS.

THE LOCKING RODS PENETRATES 1/2" INTO FRAME HEAD AND THRESHOLD.

FOR SINGLE DOOR:

MULTI POINT LOCKING SYSTEM WITH THUMB TURN OPERATOR ON THE INTERIOR AND KEY OPERATOR ON THE EXTERIOR AT 44 3/4" FROM BOTTOM AT RIGHT JAMB STILE WITH (1) #1 2X1 1/2" FH SMS. SURFACE MOUNT METALLIC STRIKE PLATE AT 44 3/4" FROM BOTTOM AT RIGHT FRAME JAMB WITH (2)#8X3/4" FH SMS.

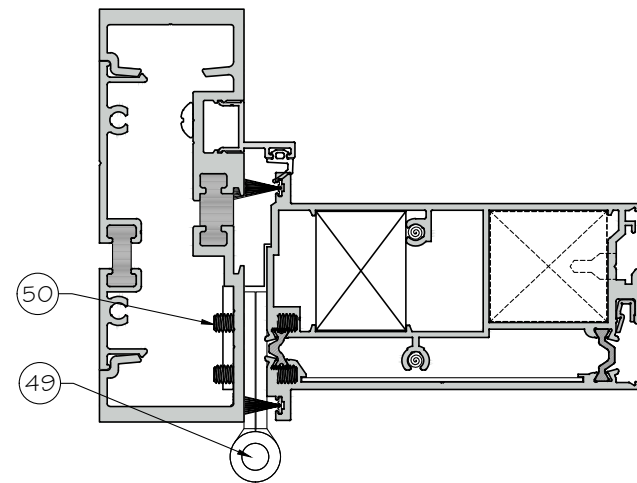
THE LOCKING RODS PENETRATES 1/2" INTO FRAME HEAD AND THRESHOLD.

HINGES:

BUTT HINGE A79 WITH (4) #1 2-24 X 3/4" FH MS.

FOR DOUBLE DOOR: LOCATED AT 6" FROM ENDS, @36".

FOR SINGLE DOOR: LOCATED AT 6" FROM ENDS, @22".

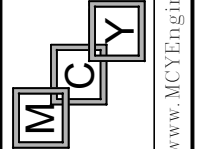


FLORIDA APPROVAL:
FL # 41359.2

SEPTEMBER 18th, 2023

ES-PSD5030T FRENCH DOOR - NI

E.S. WINDOWS, INC.
10663 NE QUAYBRID GE CT.
MIAMI, FL 33138
TEL. (305) 624-7775



MCY ENGINEERING, INC.
GLAZING CONSULTANTS
12781 MIRAMAR PARKWAY #301
MIRAMARI, FL 33027 P: 305 271 0117
www.MCYEngineering.com mcy@mcyengineering.com

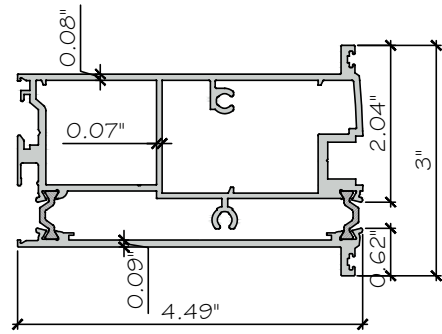
Rev. No.	Date	Drawn By	Description
R2	09.18.2023	James	UPDATE TO FBC 2023

Drawn Date: 09.18.2023
Drawn By: James

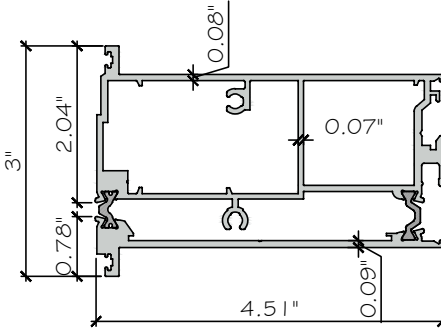
DRAWING NO.
AD22-12

HARDWARE

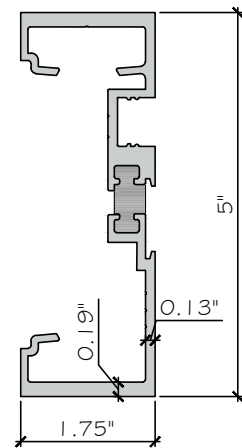
Sheet No.
6 OF 9



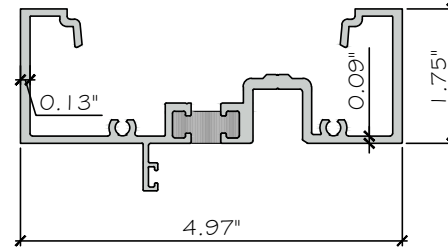
① LEAF STILE
006 FRONT + 007 BACK
ES-P5D5030T-501
ALUM.6063-T6



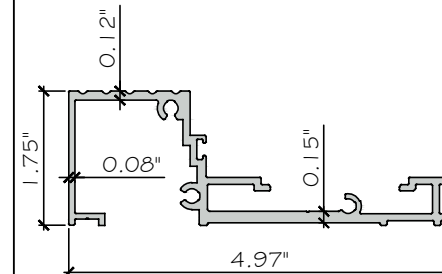
② INACTIVE STILE
023 FRONT + 030 BACK
ES-P5D5030T-506
ALUM.6063-T6



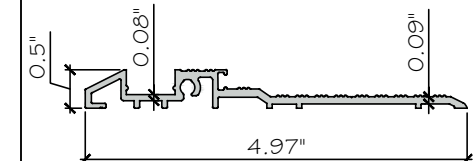
③ JAMB SWIN
ES-P5D5030T-024T
ALUM.6063-T6



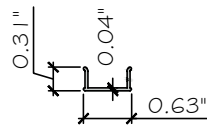
④ HEAD SWIN
ES-P5D5030T-026T
ALUM.6063-T6



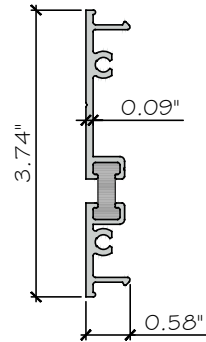
⑤ HIGH THRESHOLD
ES-P5D5030T-027
ALUM.6063-T6



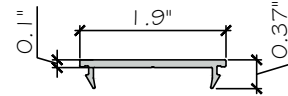
⑥ THRESHOLD
ES-P5D5030T-028
ALUM.6063-T6



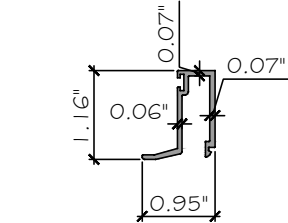
⑦ JAMB SCREW COVER
ES-EL114
ALUM.6063-T6



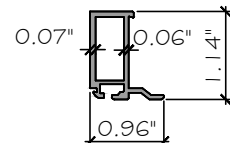
⑨ SHEAR CLIP
ES-8000T-003T
ALUM.6063-T6



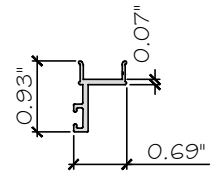
⑩ THRESHOLD COVER
ES-9027
ALUM.6063-T5



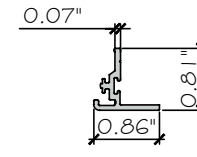
⑬ EXTERIOR GLASS STOP
ES-P5D5030T-013
ALUM.6063-T5



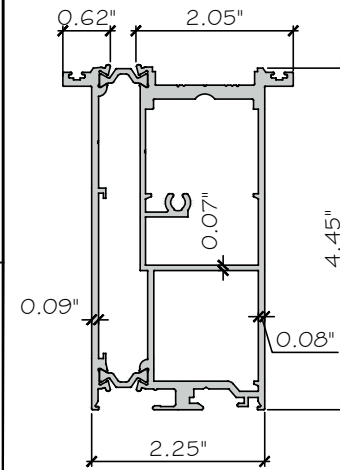
⑭ INTERIOR GLASS STOP
ES-P5D5030T-014
ALUM.6063-T5



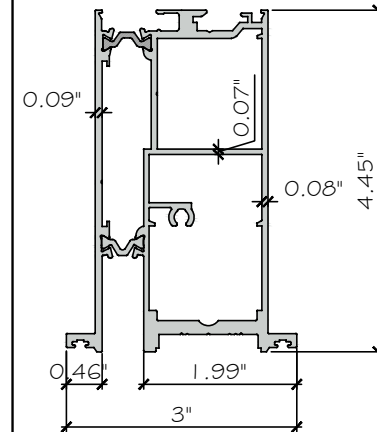
⑰ DOOR STOP
ES-P5D5030T-004
ALUM.6063-T5



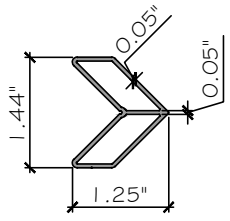
⑳ ASTRAGAL
ES-P5D5030T-022
ALUM.6063-T6



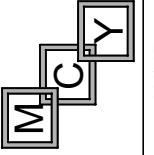
LEAF TOP
⑳ 029 FRONT + 008 BACK
ES-P5D5030T-502
ALUM.6063-T6



LEAF BOTTOM
㉑ 009 FRONT + 010 BACK
ES-P5D5030T-503
ALUM.6063-T6



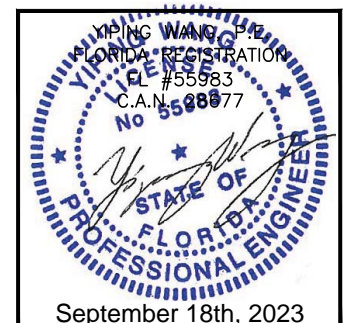
⑧ CORNER KEY
ES-45T-011
ALUM.6063-T5



ES-P5D5030T FRENCH DOOR - NI

E.S. WINDOWS, INC.
10663 NE QUAYBRID GE CT.
MIAMI, FL 33138
TEL. (305) 624-7775

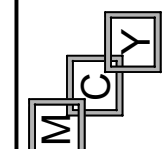
FLORIDA APPROVAL:
FL # 41359.2



Rev. No.	Date	Drawn By	Description
R2	09.18.2023	James	UPDATE TO FBC 2023
DRAWING NO. AD22-12			
PARTS			
Sheet No. 7 OF 9			

BILL OF MATERIALS

CODE	PART	DESCRIPTION	MATERIAL
1	ES-PSD5030T-501	LEAF STILE 006 FRONT + 007 BACK	ALUM.G063-T6
2	ES-PSD5030T-506	INACTIVE STILE 023 FRONT + 030 BACK	ALUM.G063-T6
3	ES-PSD5030T-024T	JAMB SWIN	ALUM.G063-T6
4	ES-PSD5030T-026T	HEAD SWIN	ALUM.G063-T6
5	ES-PSD5030T-027	HIGH THRESHOLD	ALUM.G063-T6
6	ES-PSD5030T-028	THRESHOLD	ALUM.G063-T6
7	ES-EL114	JAMB SCREW COVER	ALUM.G063-T6
8	ES-45T-011	CORNER KEY	ALUM.G063-T5
9	ES-8000T-003T	SHEAR CLIP	ALUM.G063-T6
10	ES-9027	THRESHOLD COVER	ALUM.G063-T5
11	NOT USED		
12	NOT USED		
13	ES-PSD5030T-013	EXTERIOR GLASS STOP	ALUM.G063-T5
14	ES-PSD5030T-014	INTERIOR GLASS STOP	ALUM.G063-T5
15	NOT USED		
16	NOT USED		
17	ES-PSD5030T-004	DOOR STOP	ALUM.G063-T5
18	NOT USED		
19	NOT USED		
20	ES-PSD5030T-502	LEAF TOP 029 FRONT + 008 BACK	ALUM. G063-T6
21	ES-PSD5030T-503	LEAF BOTTOM 009 FRONT + 010 BACK	ALUM. G063-T6
22	ES-PSD5030T-022	ASTRAGAL	ALUM. G063-T6
23	ES-21-B04A S	SETTING BLOCK @ INSULATED GLASS, 80±55SHORE A	SILICONE
24	NOT USED		
25	FELPA W3354 INK	PILE STILE AND LEAF TOP	POLYPROPYLENE
26	FELPA W3342 INK	PILE BOTTOM FOR HIGH SILL	POLYPROPYLENE
27	FELPA W3323 INK	PILE BOTTOM FOR THRESHOLD INTERIOR	POLYPROPYLENE
28	FELPA W3335 INK	PILE BOTTOM FOR THRESHOLD EXTERIOR	POLYPROPYLENE
29	FELPA W3348 INK	PILE ASTRAGAL	POLYPROPYLENE
30	FELPA W3359 INK	PILE HINGE STILE	POLYPROPYLENE
31	ES-UN8030-301	ISOLATOR	RIGID PVC
32	5039/50 CORNER JOINT	ESCUADRA DE ENSAMBLE	ALUMINUM
33	VILM5X14_D8 CORNER SCREW	CORNER SCREW (5039/50)	STAINLESS STEEL
34	TOR #12*1 PAN NATURAL INOX	FRAME ASSEMBLY SCREW	STAINLESS STEEL
35	TOR #12 X 2" PHIL FLAT TYPE A 18-8SS	FOR LEAF ASSEMBLY	STAINLESS STEEL
36	TOR #14 x 3/4" HWH TYPE AB	FOR SHEAR BLOCK	STAINLESS STEEL
37	TOR# 12 x 3/4" PH	FOR SHEAR BLOCK INTERMEDIATE (Panelex)	STAINLESS STEEL
38	#12 * 2-1/2" F.H	FOR LEAF ASSEMBLY TOP/BOTTOM	STAINLESS STEEL
39	#14*3 1/4 HWH(390) ELCO	FOR INSTALLATION JAMB/SILL	STAINLESS STEEL
40	3479715 - LSB 8050-752 - LEFT	STRIKER	STAINLESS STEEL

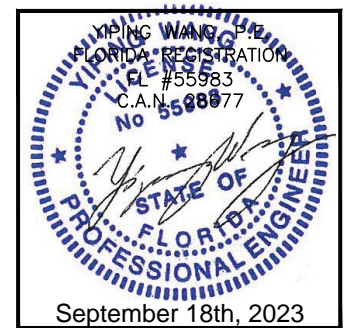


MCY ENGINEERING, INC.
 GLAZING CONSULTANTS
 12781 MIRAMAR PARKWAY #301
 MIRAMAR, FL 33027 P: 305 271 0117
 www.MCYEngineering.com mcy@mcyengineering.com

ES-PSD5030T FRENCH DOOR - NI

E.S. WINDOWS, INC.
 10663 NE QUAYBRIDGE CT.
 MIAMI, FL 33138
 TEL. (305) 624-7775

FLORIDA APPROVAL:
FL # 41359.2

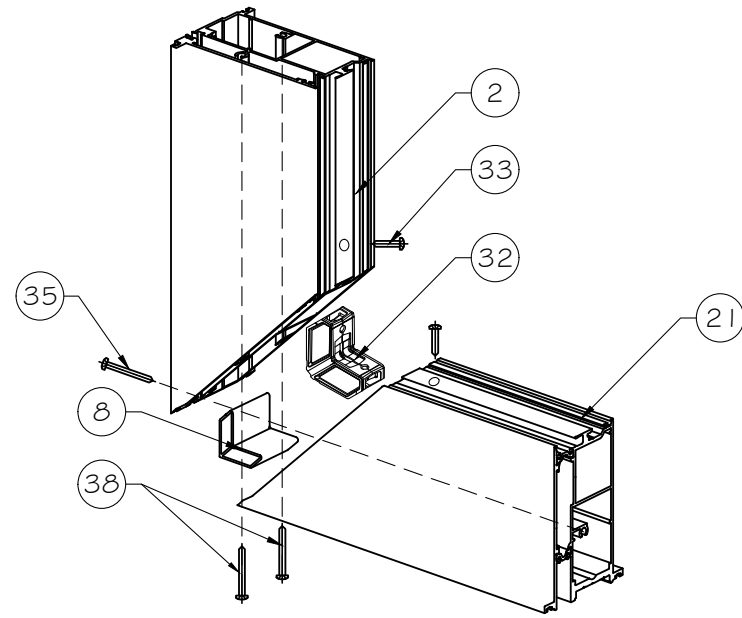


Rev. No.	Date	Drawn By	Description
R2	09.18.2023	James	UPDATE TO FBC 2023

Drawn Date: 09.18.2023 Drawn By: James
 DRAWING NO. **AD22-12**
BOM
 Sheet No. **8 OF 9**

BILL OF MATERIALS

CODE	PART	DESCRIPTION	MATERIAL
41	3145903 - 7029 SHOOTBOLT	SHOOTBOLT BOTTOM	STAINLESS STEEL
42	3466977 - 881-00088 FLOOR KEEPER	ADJUSTABLE SLEEVE (1 FOR SHOOTBOLT BOTTOM)	STAINLESS STEEL
43	3492553 - A52600 MULTIPONT LOCK	LOCK	STAINLESS STEEL
44	PLANET HS DROP SEAL	DROP SEAL	STAINLESS STEEL
45	ESC-004 ES-PSD5030T-E01	ESC-004 ES-PSD5030T-E01	---
46	PS01-6208-* ROSE COVER	COVER CYLINDER	STAINLESS STEEL
47	DLO1-6253-* CYLINDER 40/40 TURN/KEY	CYLINDER	BRASS
48	SHPRO3160LPNS601250 DOOR THICK 2 1/4"	PULL-PULL	AISI 316 STAINLESS STEEL
49	HINGE A79	BUTT HINGE	STAINLESS STEEL
50	TOR #12-24 x 1/2" FH	HINGE SCREW (STILE)	STAINLESS STEEL
51	TOR #12 x 1 1/2" P.H. S.M.S. ST/ST	FOR ASSEMBLY (ES-8000 FRAME)	STAINLESS STEEL
52	TOR #8 x 1/2 F.H.	FOR ASTRAGAL	STAINLESS STEEL
53	3451082 7037-SHOOTBOLT	SHOOTBOLT TOP	STAINLESS STEEL
54	THRESHOLD CLIP ACERO INOX_LEFT	THRESHOLD CLIP LEFT	STAINLESS STEEL
55	THRESHOLD CLIP ACERO INOX_RIGHT	THRESHOLD CLIP RIGHT	STAINLESS STEEL
56	VARILLA STEEL ROD	STEEL ROD 9 1/4 PLATED FLUSHBOLT	STAINLESS STEEL
57	EMP-768 ES-EL100-G02A	GLAZING GASKET	SILICONE
58	EMP-501 ES-EL300-G01 E	SEAL GASKET	EPDM



CORNER ASSEMBLY

MCY ENGINEERING, INC.
 GLAZING CONSULTANTS
 12781 MIRAMAR PARKWAY #301
 MIRAMAR, FL 33027 P: 305 271 0117
 www.MCYEngineering.com mcy@mcyengineering.com

ES-PSD5030T FRENCH DOOR - NI
 E.S. WINDOWS, INC.
 10663 NE QUAYBRIDGE CT.
 MIAMI, FL 33138
 TEL: (305) 624-7775

FLORIDA APPROVAL:
FL # 41359.2

YIPING WANG
 FLORIDA REGISTRATION
 No. 55983
 C.A.N. 08877
 STATE OF FLORIDA
 PROFESSIONAL ENGINEER
 September 18th, 2023

Rev. No.	Date	Drawn By	Description
R2	09.18.2023	James	UPDATE TO FBC 2023

Drawn Date: 09.18.2023
 Drawn By: James
 DRAWING NO.: AD22-12
BOM
 Sheet No.: 9 OF 9