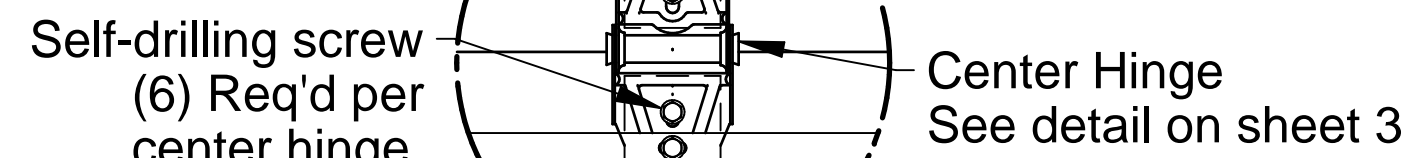
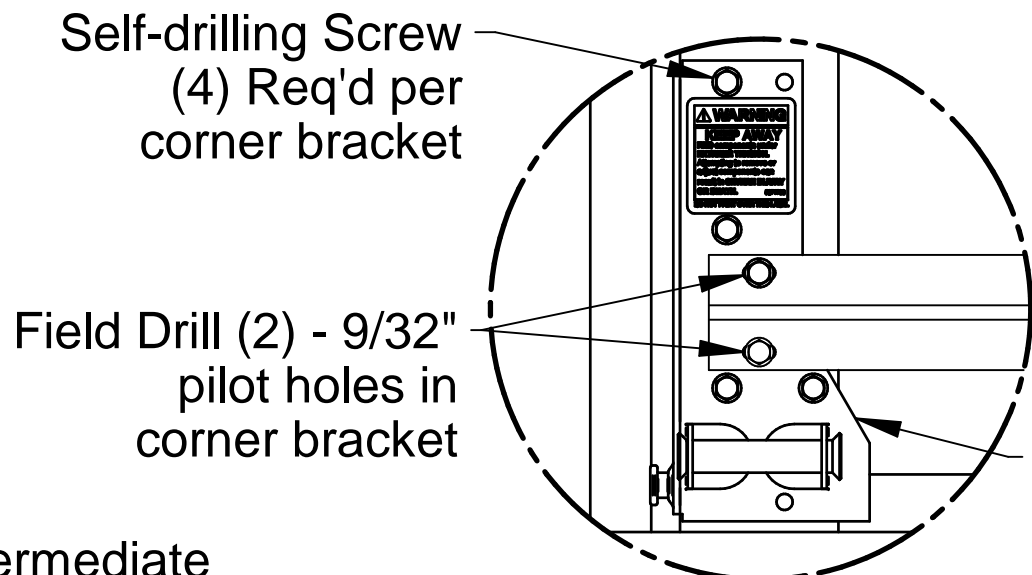


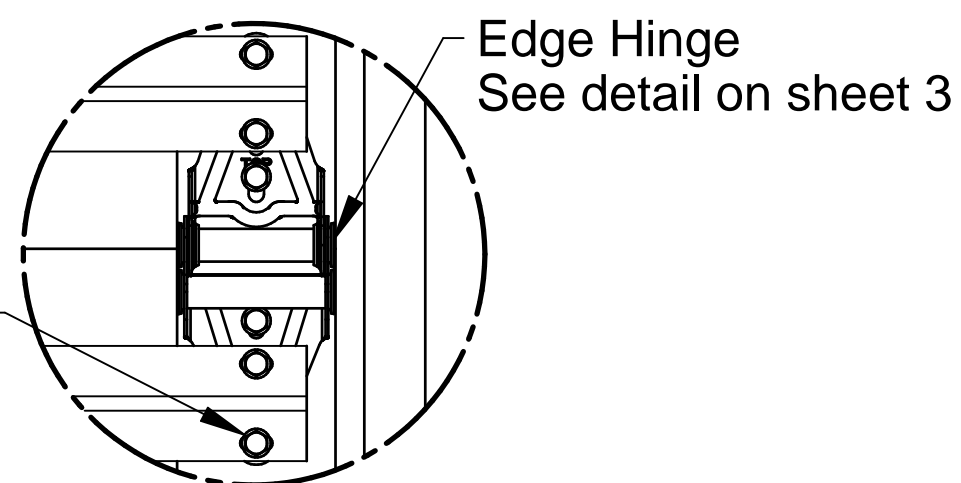
Top Fixture Attachment



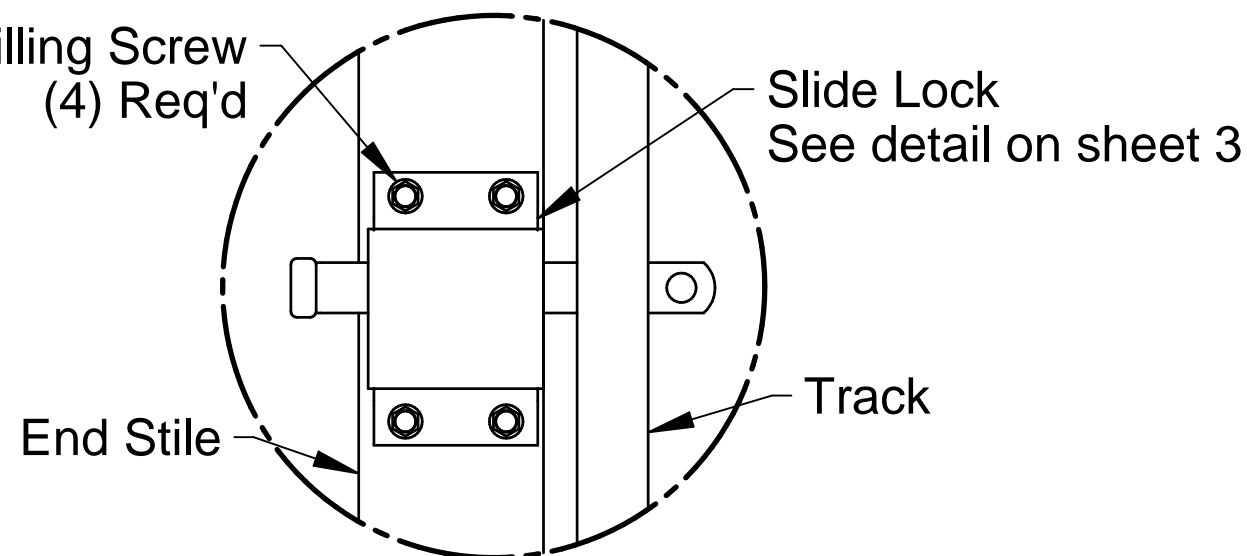
Center Hinge Attachment



Corner Bracket Attachment



Edge Hinge Attachment



Optional Interior Lock Attachment

Doors tested per ANSI/DASMA 108 for static air pressure

Max. Door Width	Colonial		Ranch		Carriage House	
	Ctr. Hngs. per Sect.	Design Loads	Ctr. Hngs. per Sect.	Design Loads	Ctr. Hngs. per Sect.	Design Loads
8'-2"	1	55.0 -62.2	1	55.0 -62.2	1	55.0 -62.2
9'-2"	1	48.9 -55.3	1	48.9 -55.3	1	48.9 -55.3
10'-2"	2	49.7 -55.7	1	39.6 -44.8	1	39.6 -44.8
12'-2"	2	41.4 -46.4	2	41.4 -46.4	2	34.6 -39.2
14'-2"	2	30.4 -34.1	2	30.4 -34.1	2	29.7 -33.6
16'-2"	3	23.3 -26.0	3	23.3 -26.0	3	23.3 -26.0
18'-2"	3	18.4 -20.5	3	18.4 -20.5	3	18.3 -20.3
20'-2"	4	12.3 -13.8	4	12.3 -13.8	4	12.3 -13.8

Interior Skin
.015 Thick G-40 galvanized steel with an epoxy primer and baked on polyester finish which is roll-formed with a texture embossed skin.

Exterior Skin
.015 Thick G-40 galvanized steel with an epoxy primer and baked on polyester finish which is roll-formed with a texture embossed skin.

Hardware Plate .035 thick

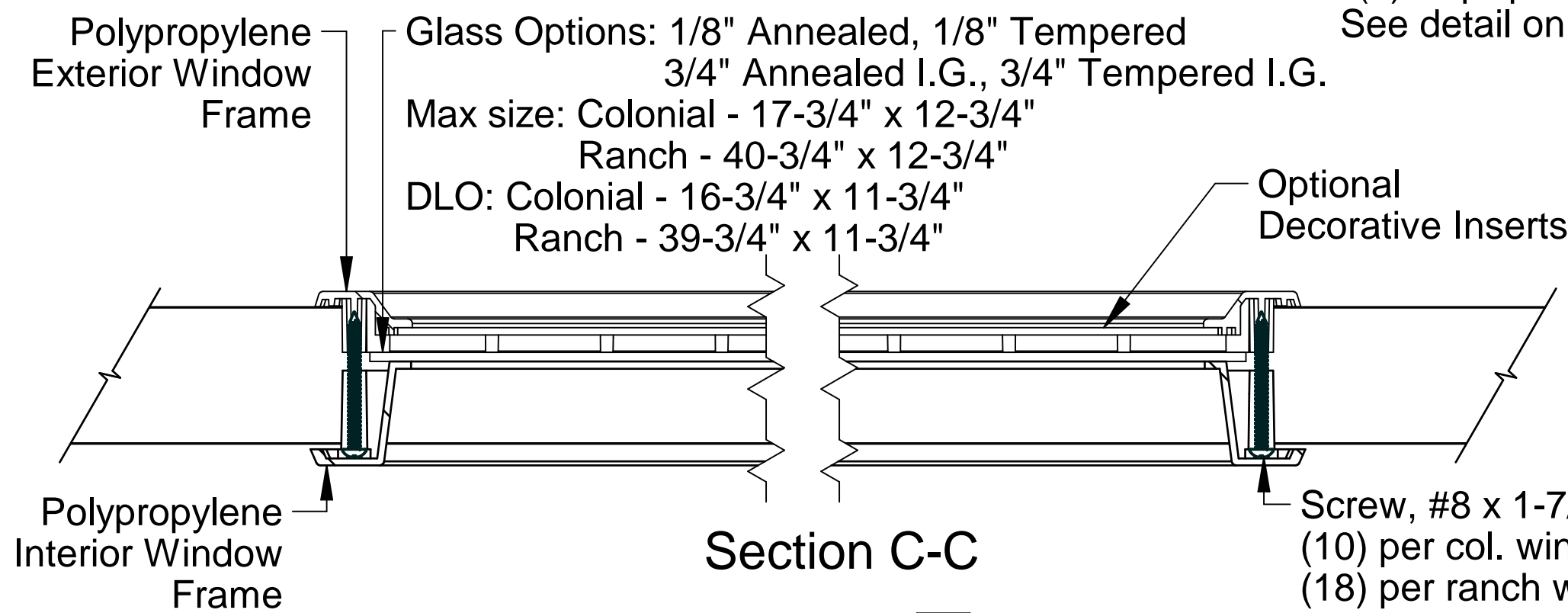
Insulation Core
Expanded Polystyrene

Section B-B

Retaining Nut
7/16" push on retaining nut
(1) req'd per roller.
See detail on sht. 3

3/8"

- Jams
See sht. 2 for attachment
- Hex Head Lag Screw
(2) per bracket.
See detail on sht. 3
- Track Bracket
See detail on sht. 3
- Track Bolt / Nut
See detail on sht. 3
- End stile
19 Ga. min. Galv. Steel
- Track Roller
See detail on sht. 3
- Track, 2" shown, 3" optional
See detail on sht. 3



Section C-C

Glass Options: 1/8" Annealed, 1/8" Tempered, 3/4" Annealed I.G., 3/4" Tempered I.G.

Max size: Colonial - 17-3/4" x 12-3/4"
Ranch - 40-3/4" x 12-3/4"
DLO: Colonial - 16-3/4" x 11-3/4"
Ranch - 39-3/4" x 11-3/4"

Optional Decorative Inserts

Screw, #8 x 1-7/8"
(10) per col. window
(18) per ranch window

Spring Counterbalance
Spring wire individually calculated to counterbalance door.
Quantity and size of spring will vary based on door size.

Door Height
8'-0" High shown
Other door heights available up to 18'-0" using 18", 21" or 24" high sections

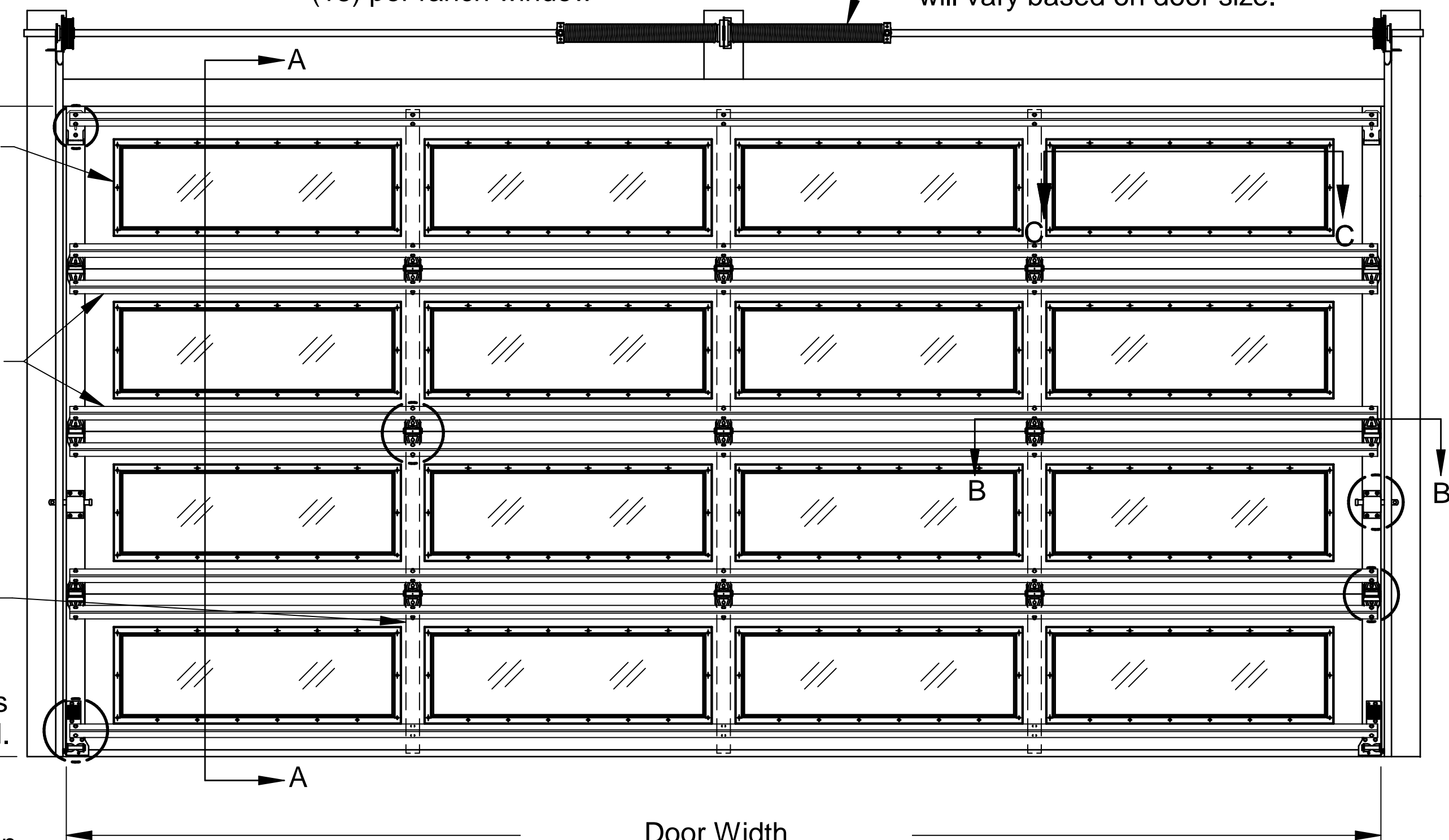
Ranch windows shown
See window styles on sht. 2

Steel Reinforcement
(2) U-bar per section fastened to all center and end stiles using (2) self-drilling screws at each stile.

Embedded Hardware Plates

Locks required on doors not electrically operated.

Vents (Optional)
Vent openings may be located in bottom section as allowed by local code



Interior Elevation
Door Width
See chart for other door widths (16'-2" Ranch shown)



Scott A. Brown, P.E. Lic. No. 65940
Wendler Engineering Services, Inc.
698 Timber Creek Road, Dixon, IL 61021
FBPE CA Lic. No. 31544
Structural Adequacy for Wind Load

Scale: None	8593.01	05/24/22	Date: 05/24/22
Drawn by: R. Frey	ECO	Date	ECO: 8593.01
Checked by: G. Wedekind			
Rev. A	Description		

RAYNOR

1101 East River Road
Dixon, IL 61021

Title: Spec, Wind Load Commercial Encore

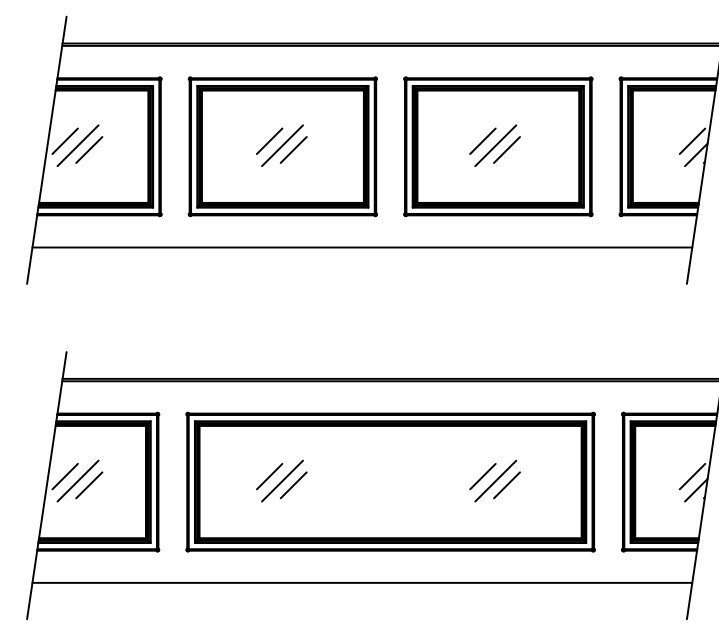
No. P-2449

Sheet 1 of 4

Rev A

Jamb Attachment Notes:

1. Maximum Positive Load per Jamb = $(10'-0" \times 49.7 \text{ PSF}) / 2 = 249 \text{ lbs. per foot.}$
2. Maximum Negative Load per Jamb = $(10'-0" \times -55.7 \text{ PSF}) / 2 = 279 \text{ lbs. per foot.}$
3. Design of the supporting structure shall be the sole responsibility of the building designer and shall be designed for the jamb loads listed in notes 1 and 2.
4. Alternate jamb attachments may be used if approved by a registered Professional Engineer.
5. DASMA Technical Data Sheet TDS-161 may be used for alternate jamb attachments.
6. 3/8" diameter lag screws required 1/4" pilot hole and 1-1/2" minimum required distance.
7. Masonry fasteners by others.

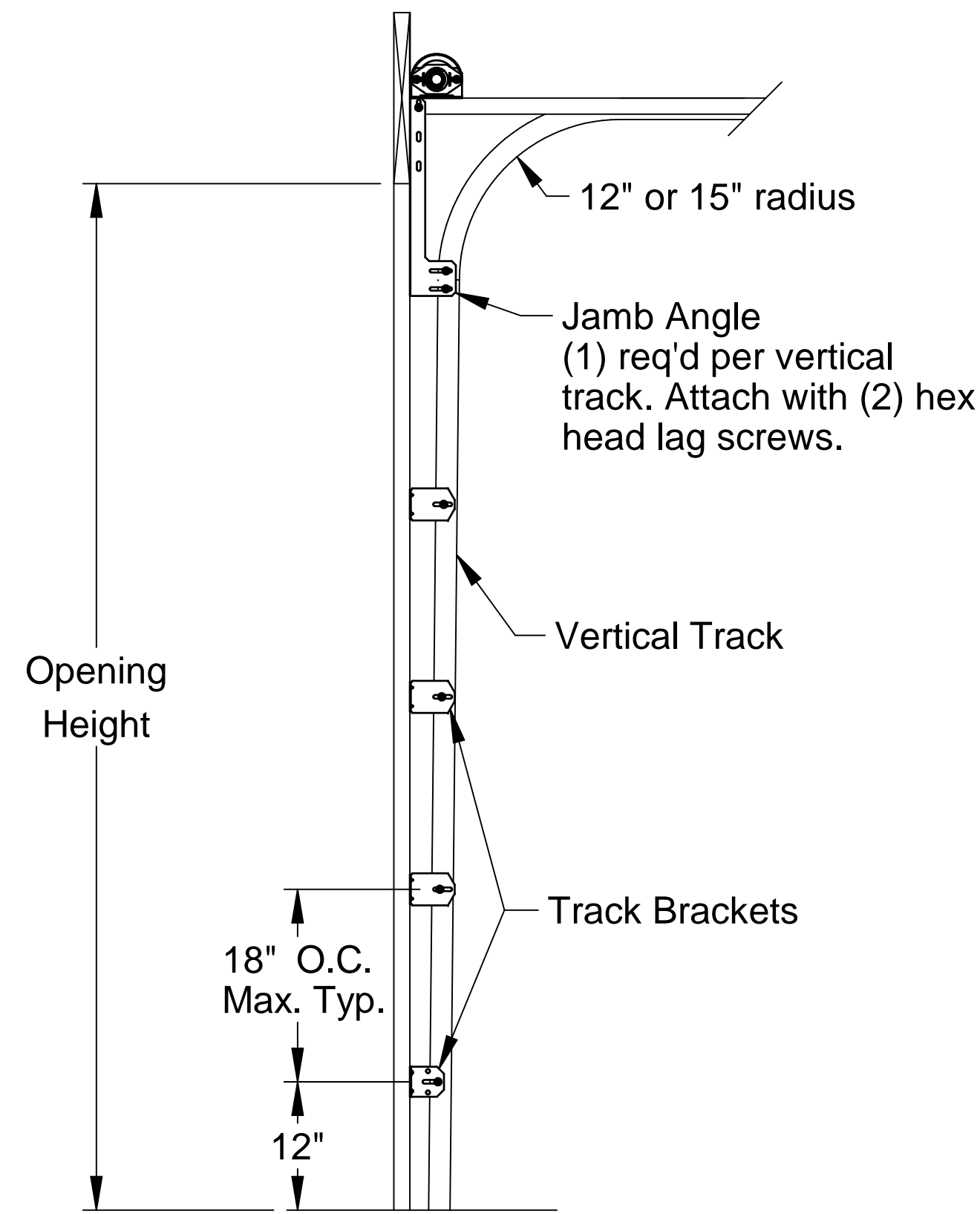
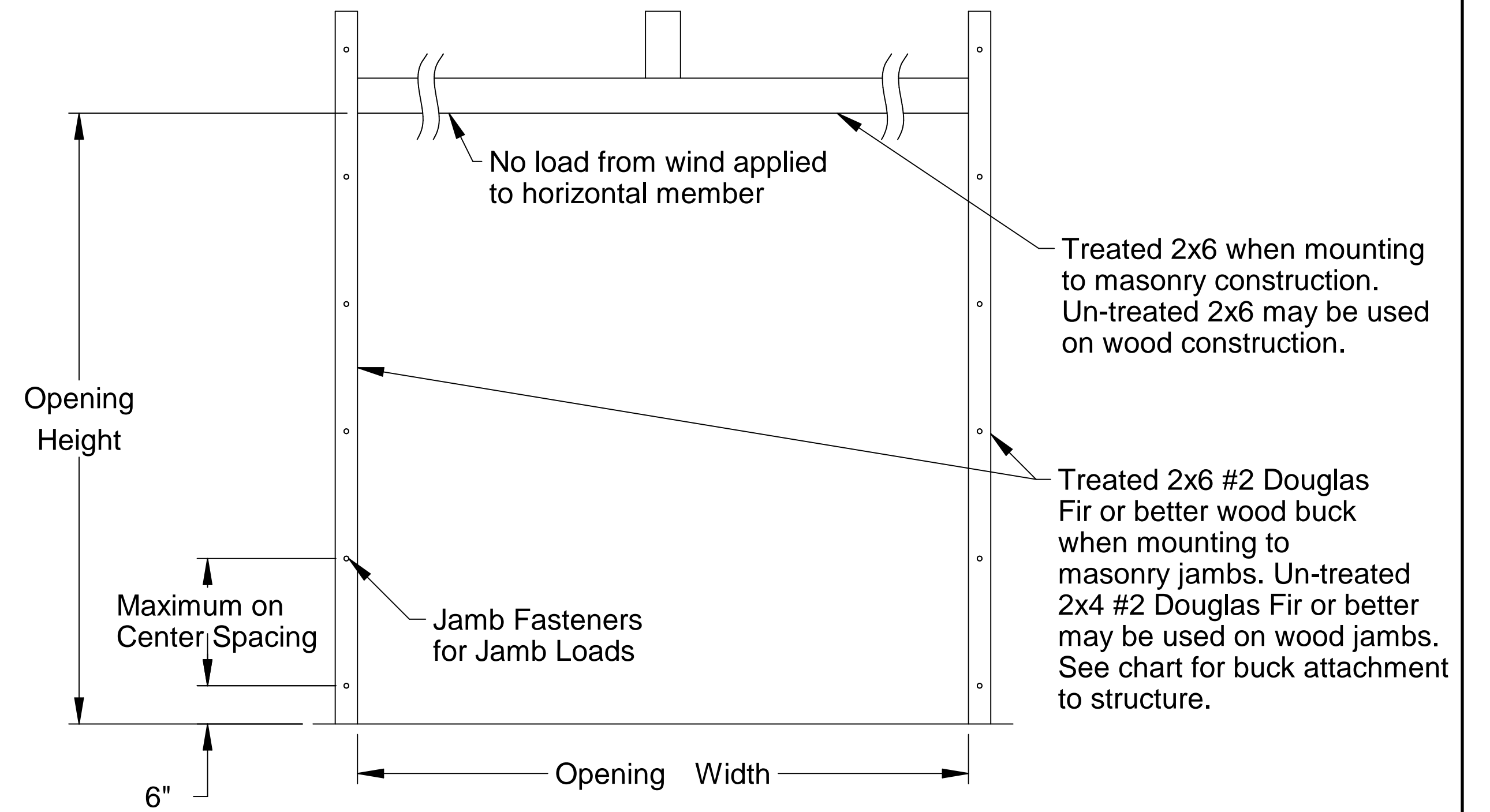


Window Styles

2x6 Attachment to Structure						
Structure Type	Fastener Type	Minimum Embedment	Minimum Edge Distance	Minimum on Center Spacing	Maximum on Center Spacing	Allowable Tension Load
2500 PSI Min. Concrete	1/4" Tapcon+ (Plus) with 1-1/8" OD Washer	2"	2.5	6"	24"	526
Southern Pine	3/8" x 3" Lag with 1-1/8" OD Washer	1.50"	1.50"	1.50"	24"	655
Spruce Pine Fir	3/8" x 3" LAG with 1-1/8" OD Washer	1.50"	1.50"	1.50"	23"	482

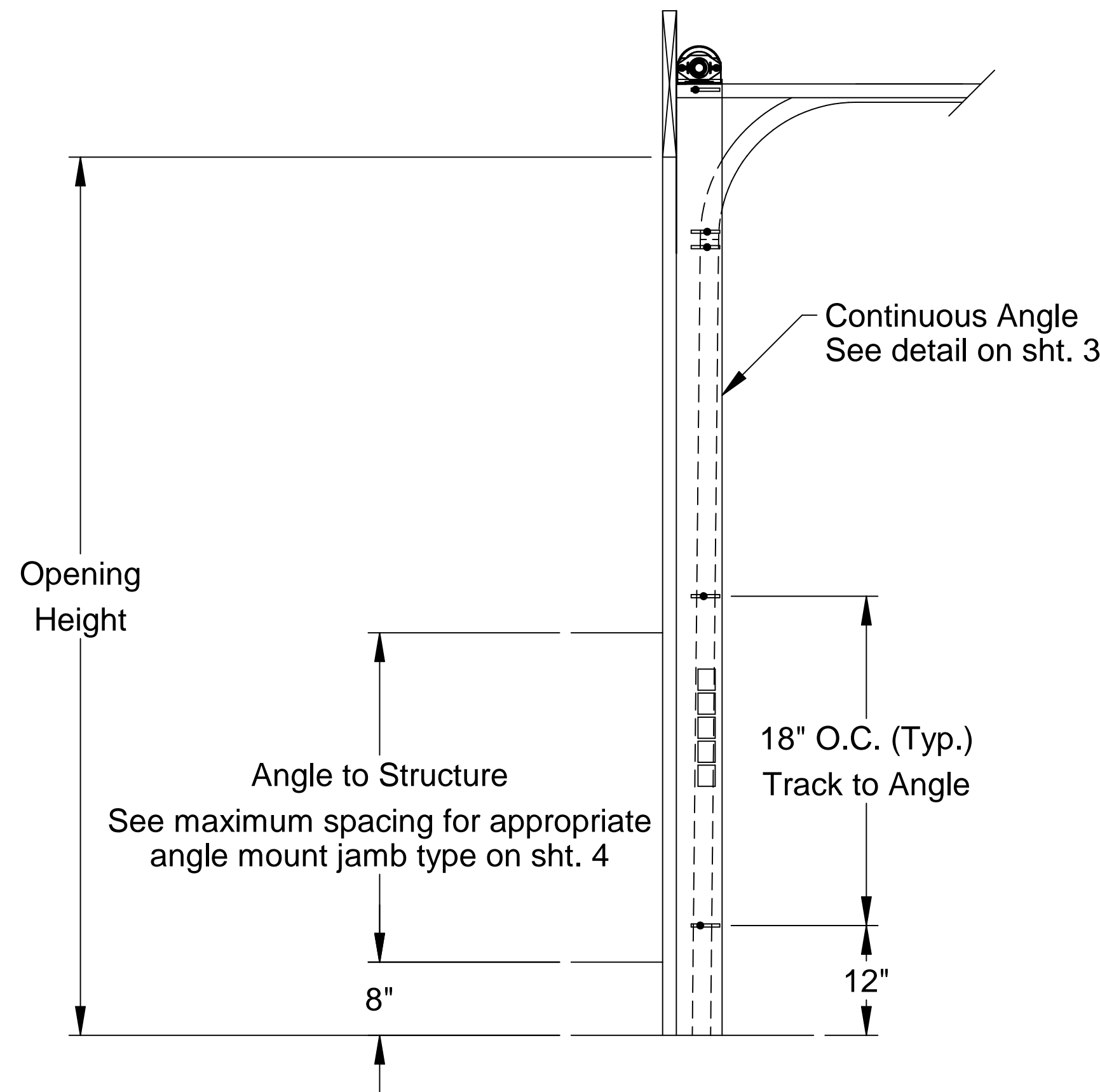
Colonial windows

Ranch windows



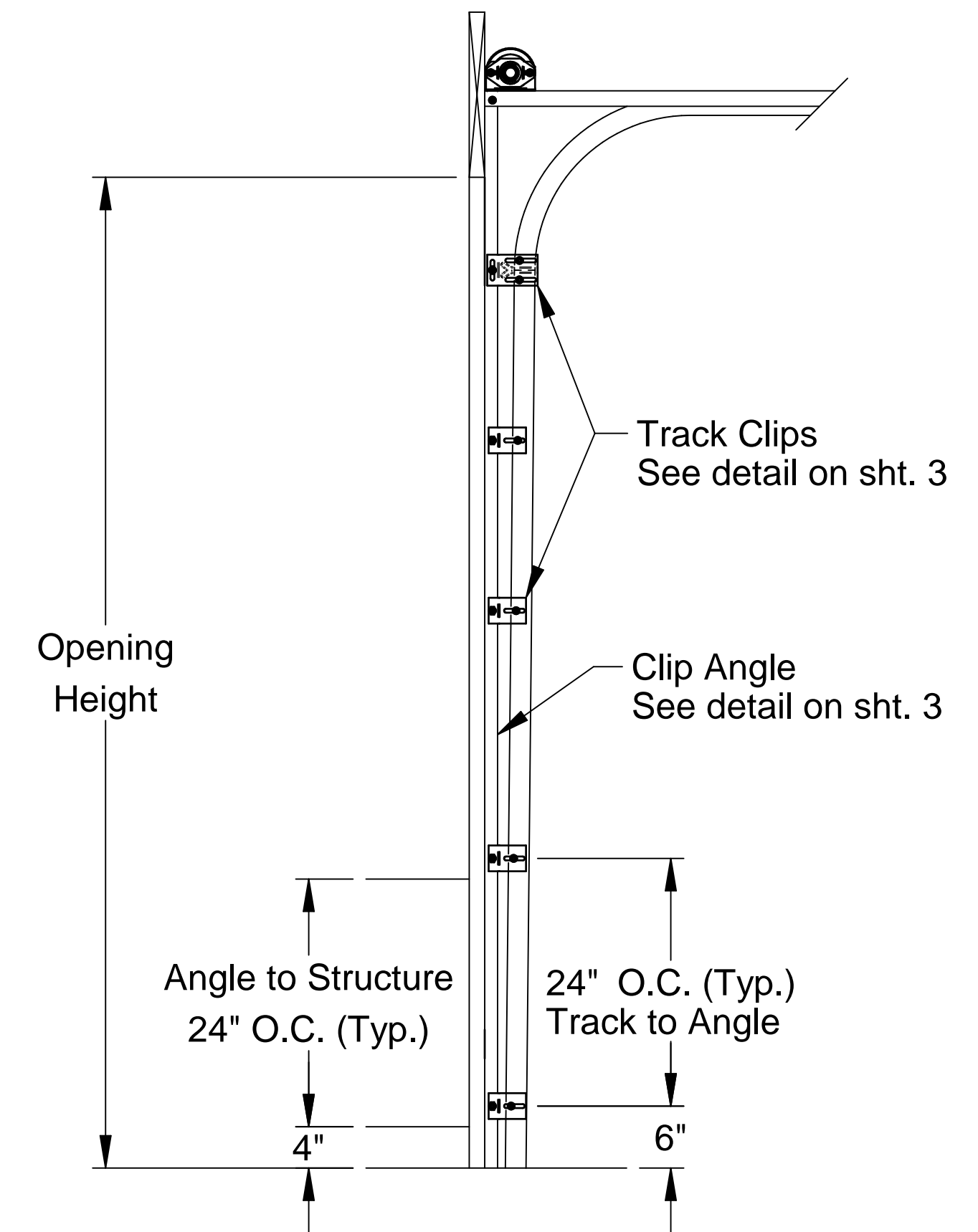
**Typical Track Installation
Bracket Mount
Wood Jamba**

Normal headroom track shown, low headroom, lift clearance and vertical lift track available.



**Typical Track Installation
Angle Mount
Wood, Steel or Concrete Jamba**

Normal headroom track shown, low headroom, lift clearance and vertical lift track available.



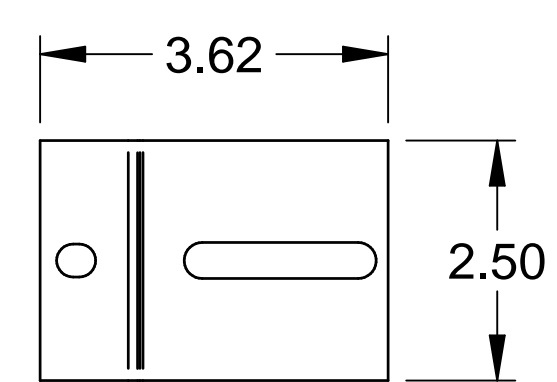
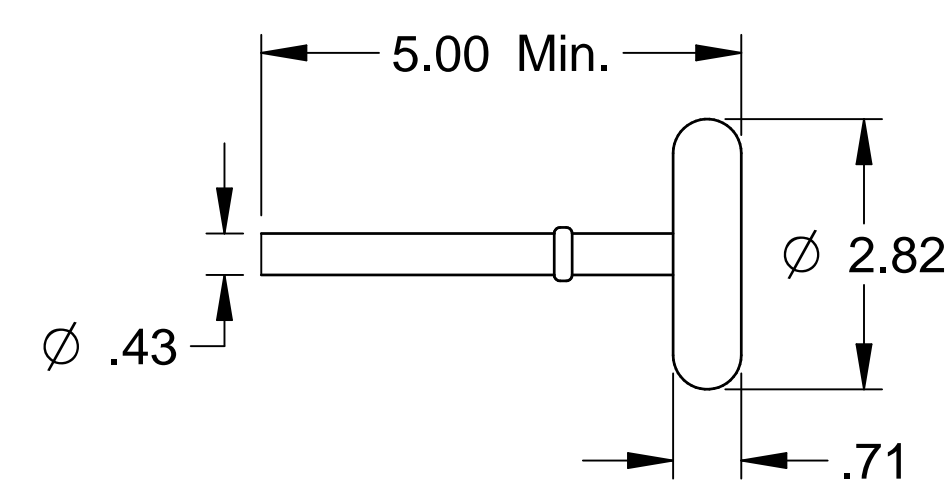
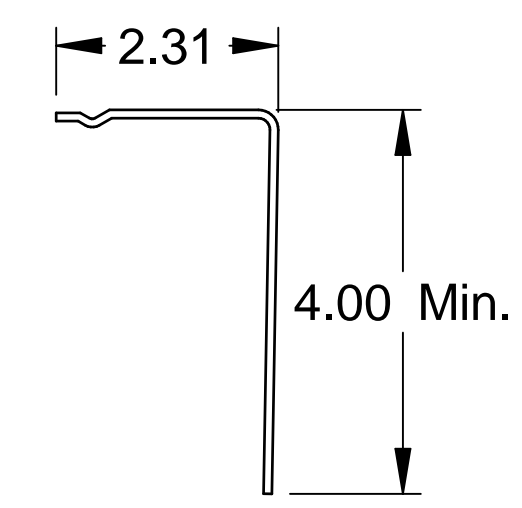
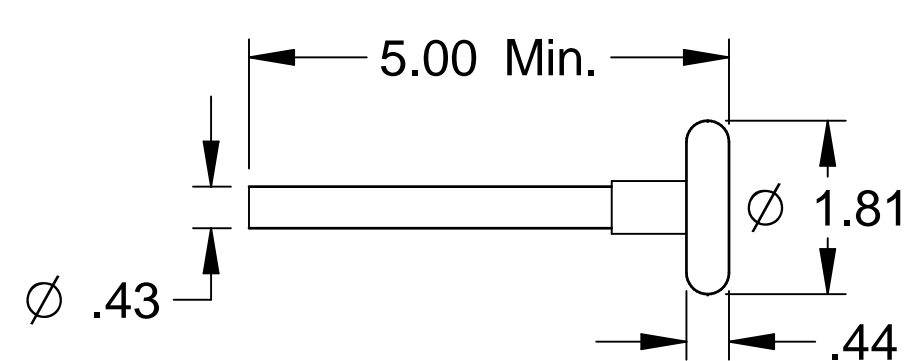
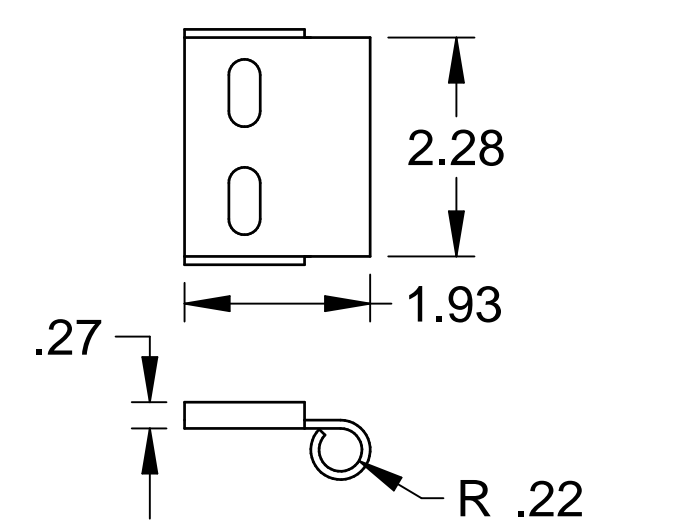
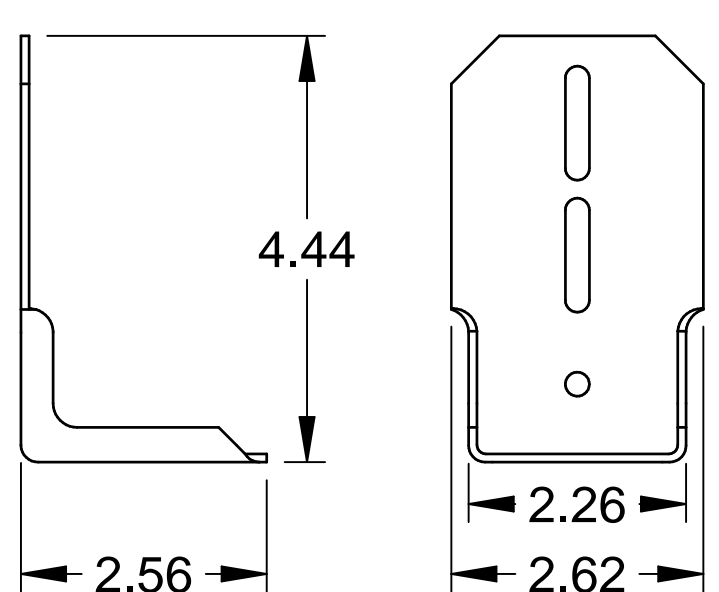
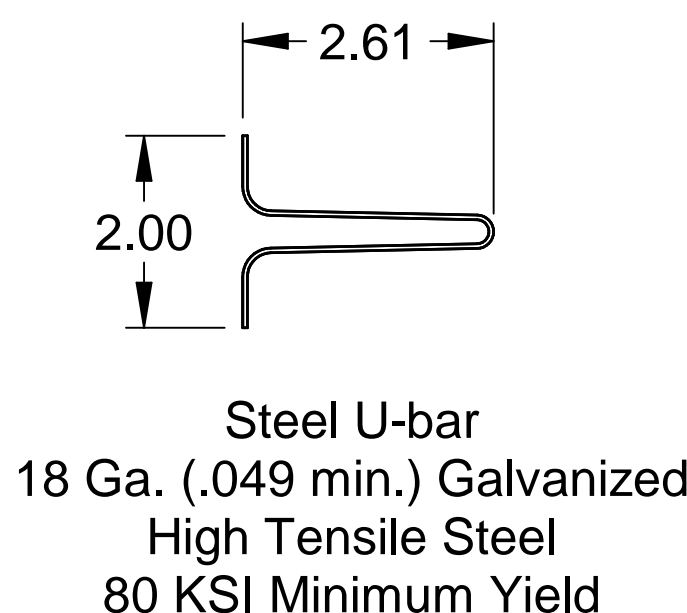
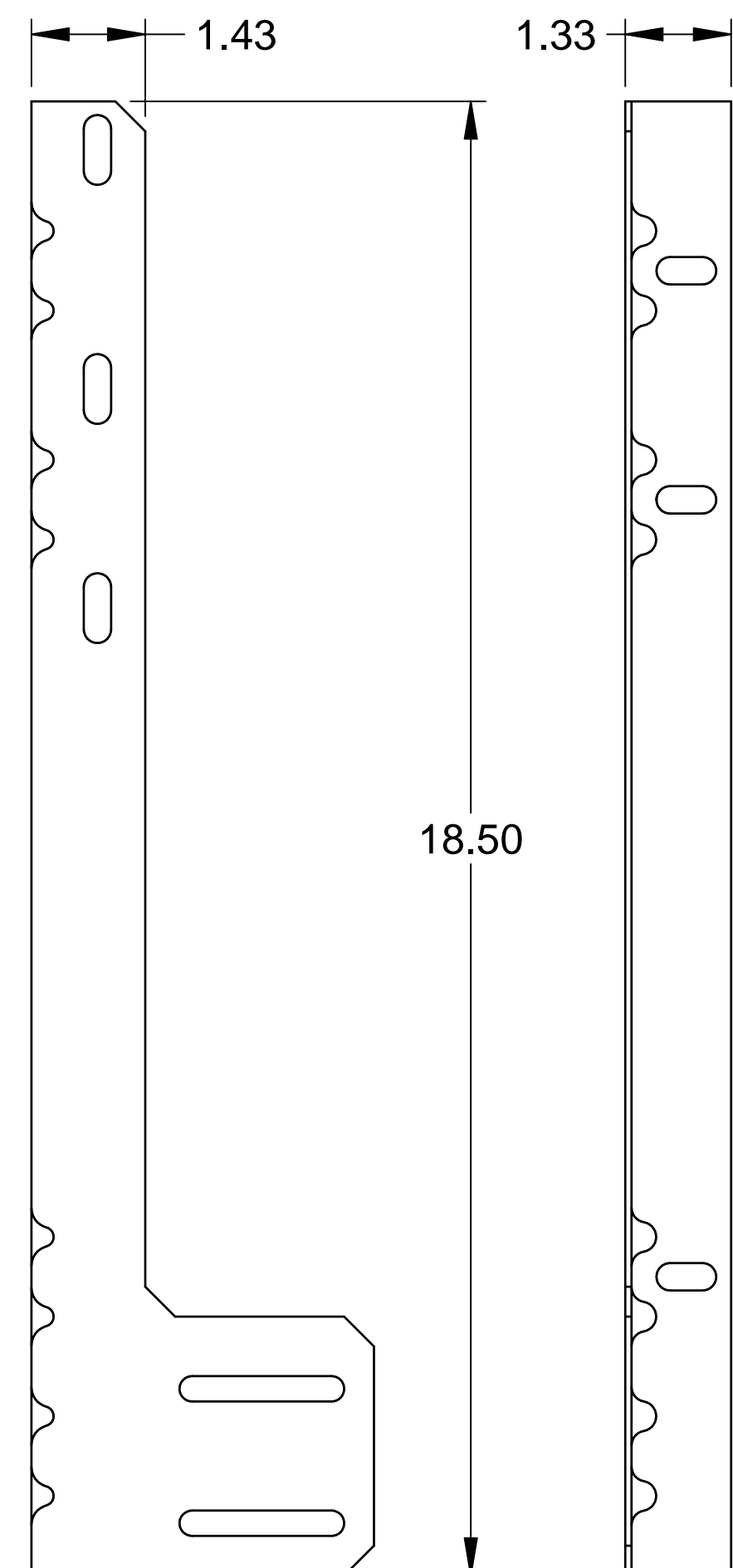
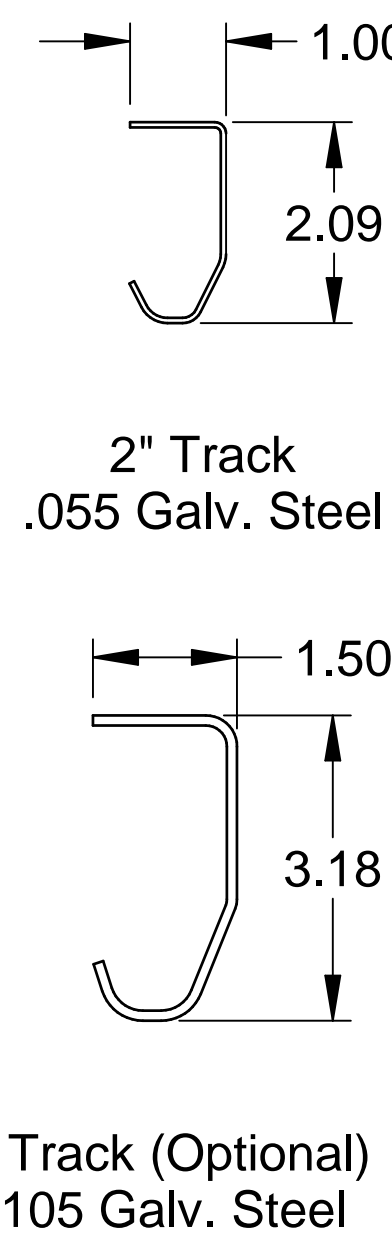
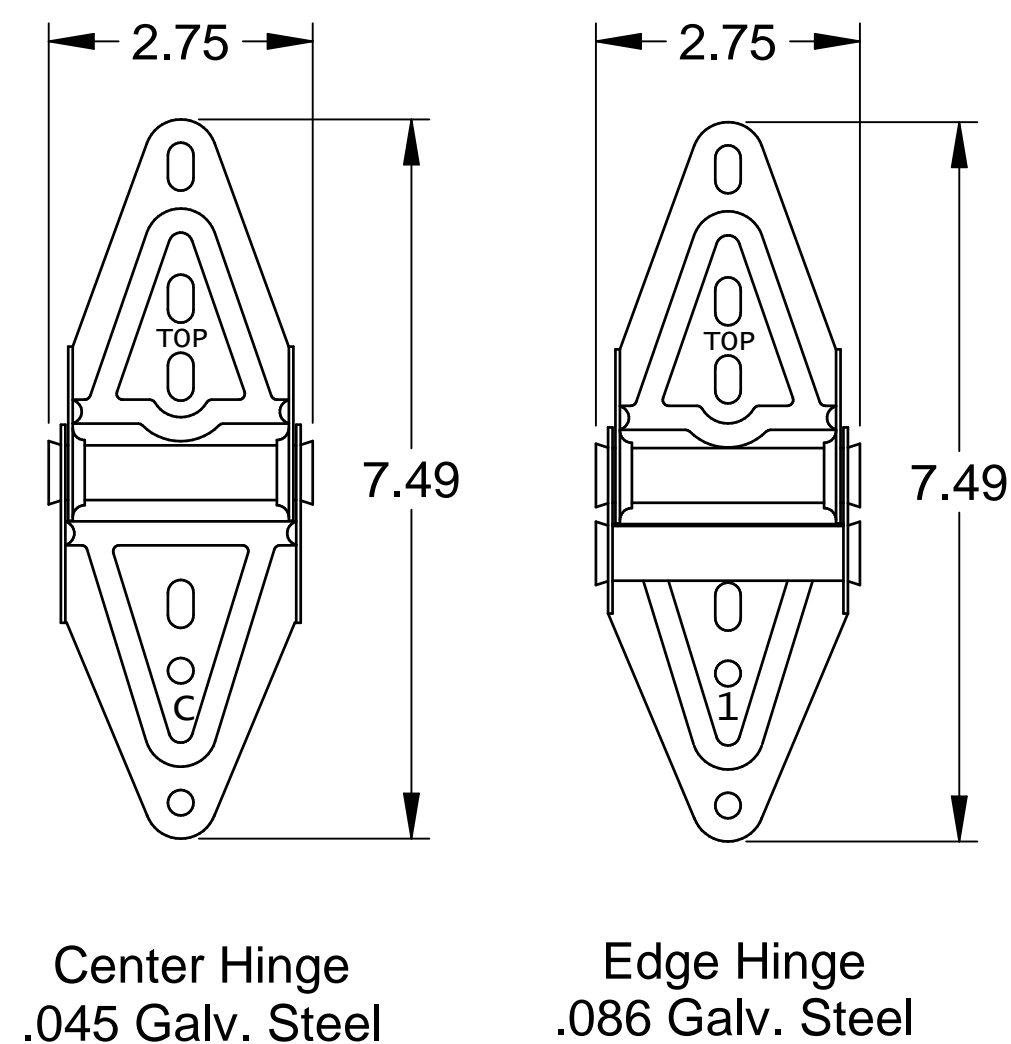
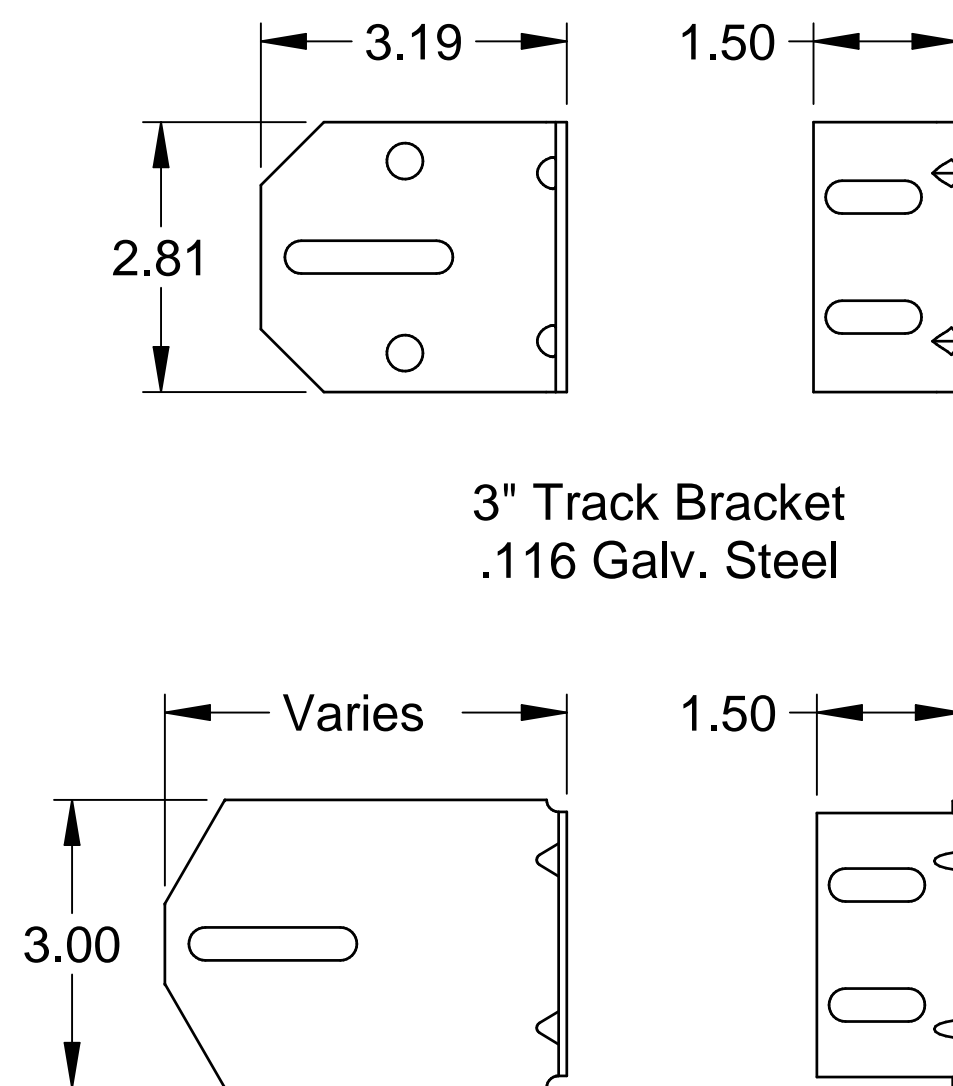
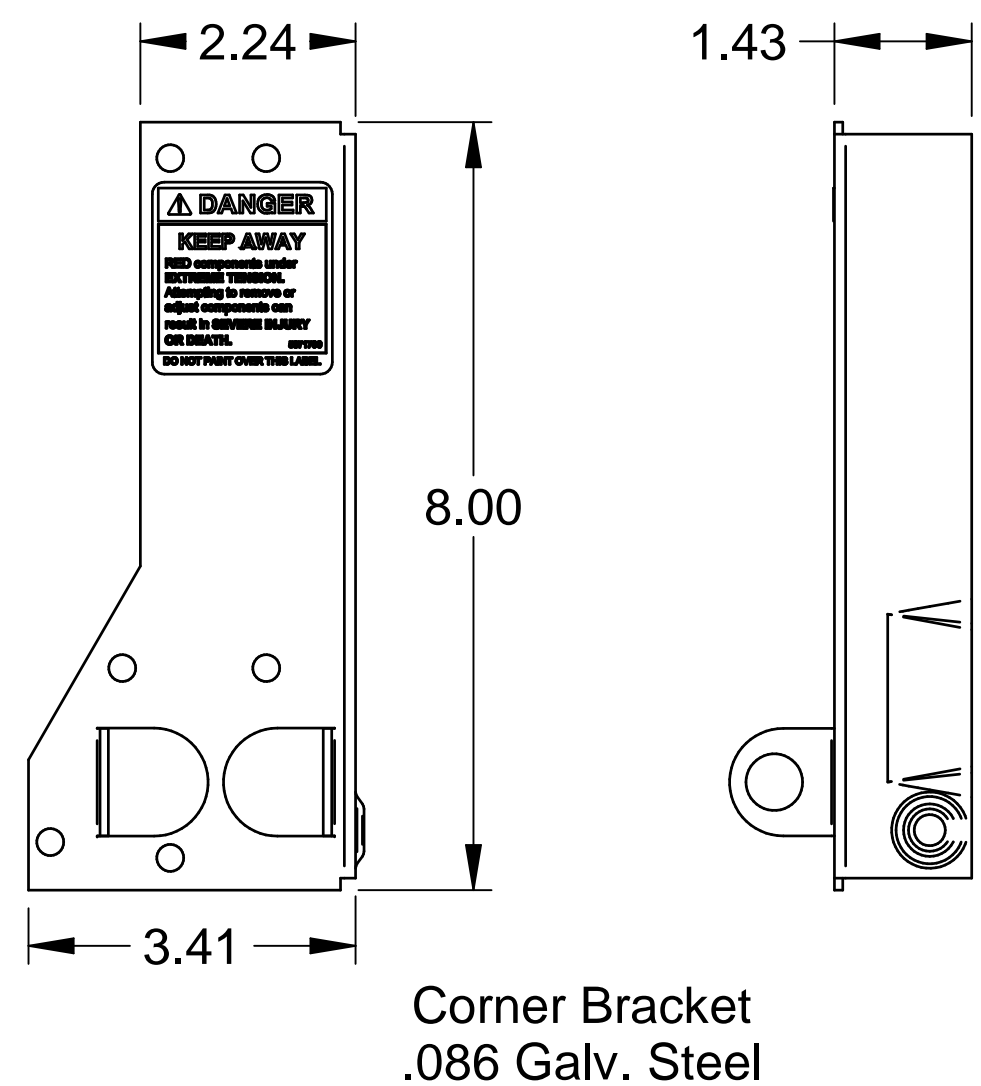
**Typical Track Installation
Pre-Assembled Clip Angle
Wood, Steel or Concrete Jamba**

Normal headroom track shown, lift clearance and vertical lift track available.



Scott A. Brown, P.E. Lic. No. 65940
Wendler Engineering Services, Inc.
698 Timber Creek Road, Dixon, IL 61021
FBPE CA Lic. No. 31544
Structural Adequacy for Wind Load

Scale: None	<p>1101 East River Road Dixon, IL 61021</p>	Title: Spec, Wind Load Commercial Encore	
Drawn by: R. Frey		No. P-2449	Sheet 2
Checked by: G. Wedekind			
Date: 05/24/22		ECO: 8593.01	

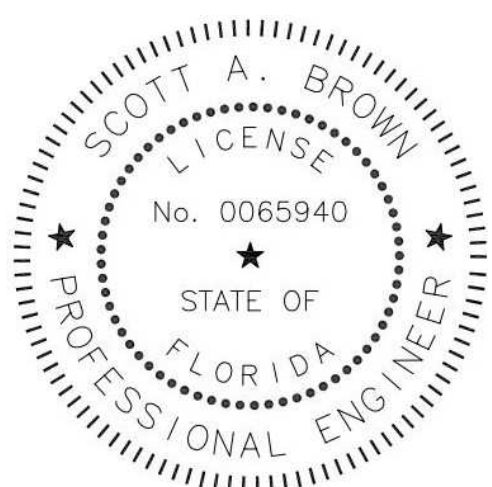
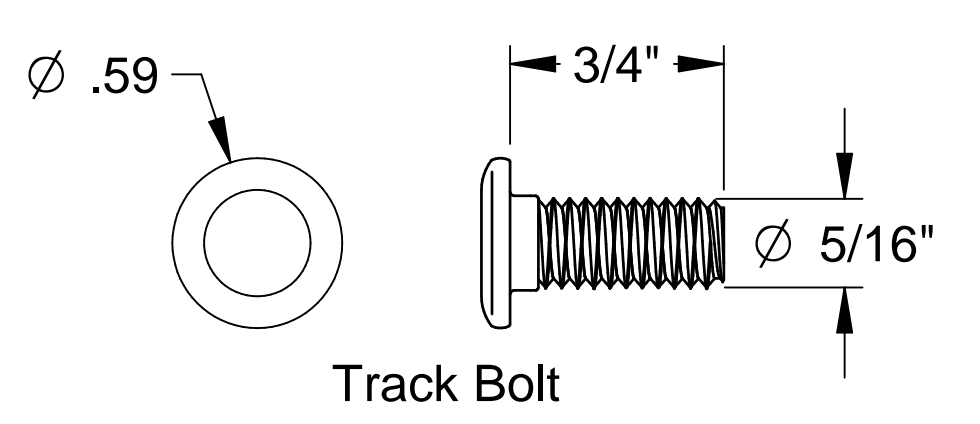
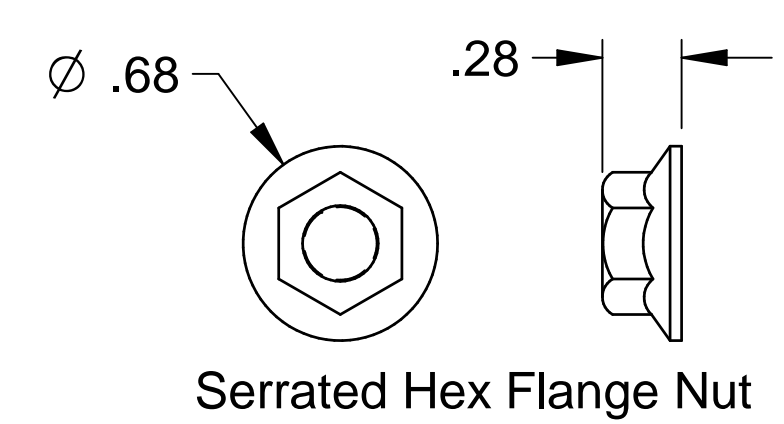
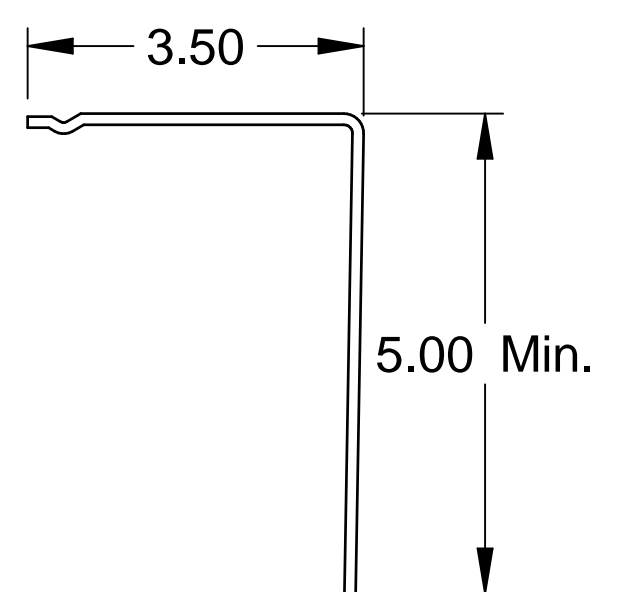
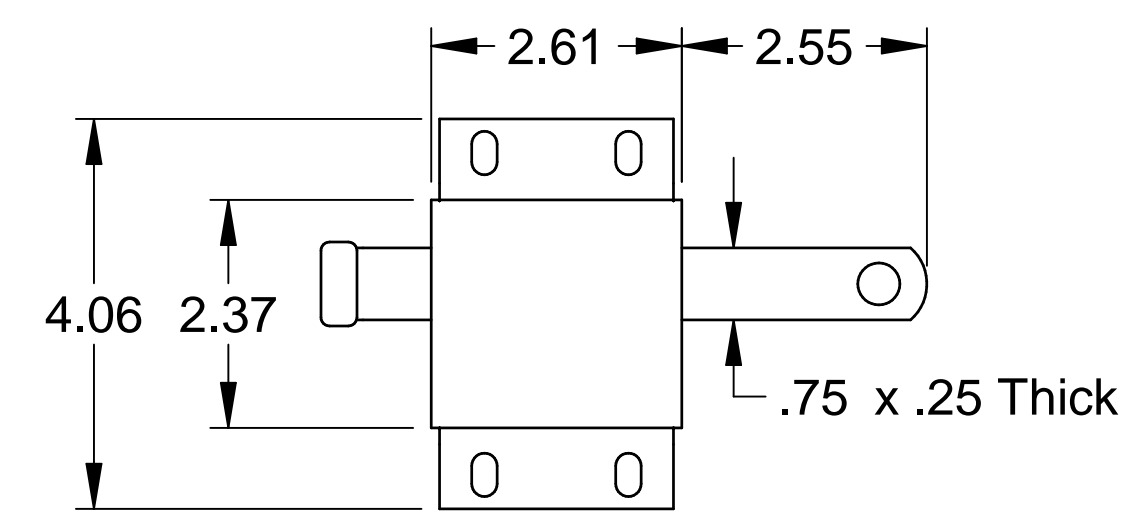
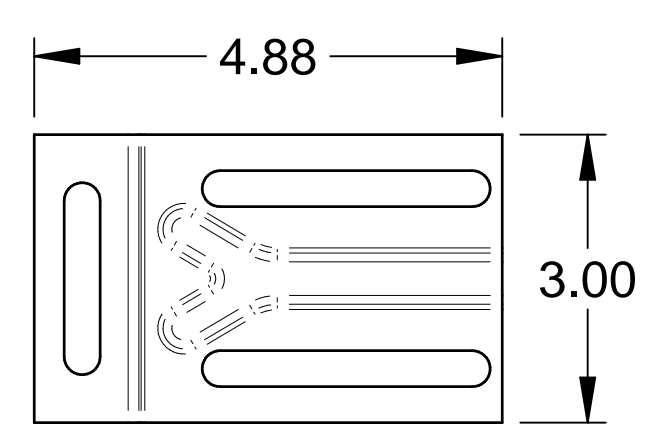
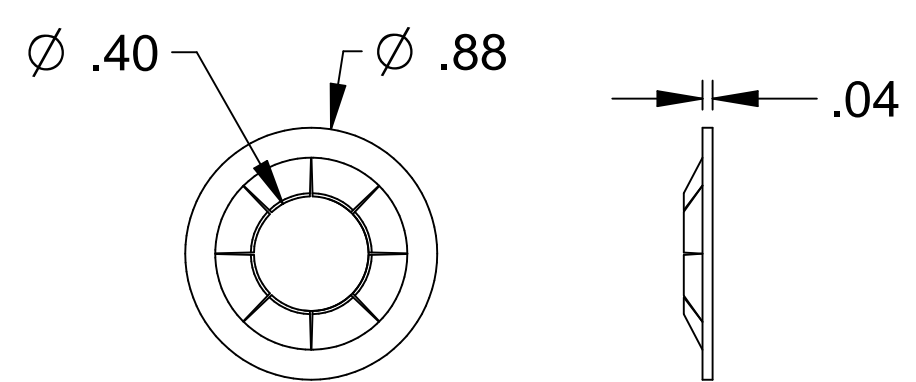


Top Fixture
.085 Galv. Steel

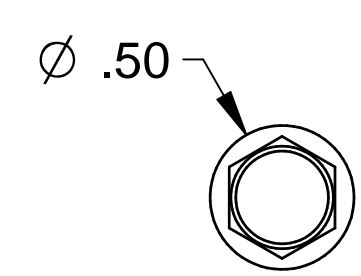
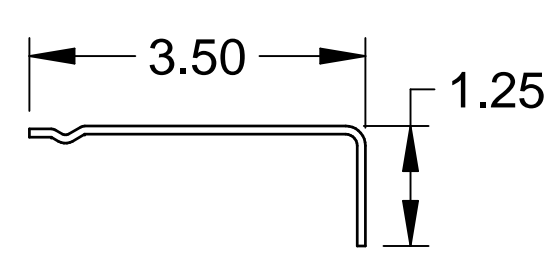
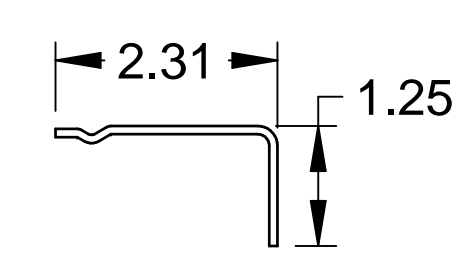
Roller Carrier
.085 Galv. Steel
Attached to Top Fixture
w/(2) Track Bolts and Whiz Nuts

2" Angle Mount (Opt.)
.086 Galv. Steel

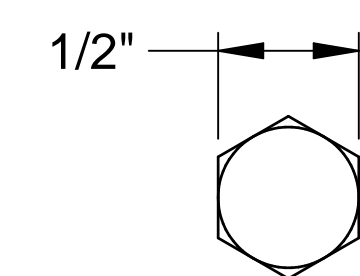
3" Roller
Steel 10-ball (Opt.)



Scott A. Brown, P.E. Lic. No. 65940
Wendler Engineering Services, Inc.
698 Timber Creek Road, Dixon, IL 61021
FBPE CA Lic. No. 31544
Structural Adequacy for Wind Load



Self-Drilling Screw



Hex Head Lag Screw

Printed copies of this document are not considered signed and sealed and the SHA authentication code must be verified on any electronic copies.

All parts shown are for illustration purposes only. The actual product may include equivalent parts due to availability.

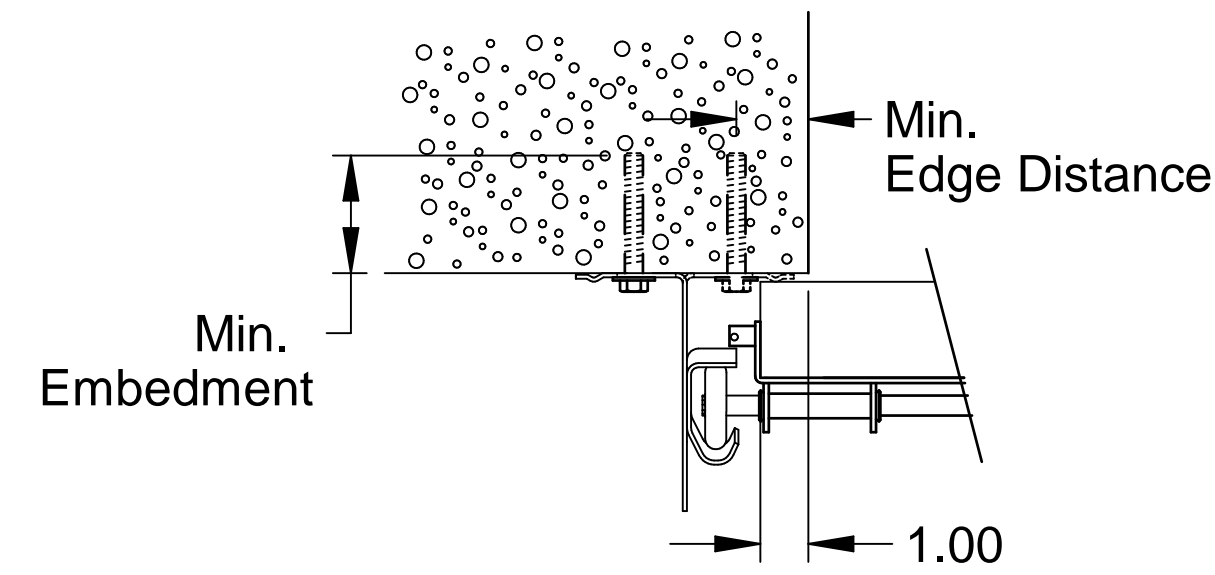
Scale: None
Drawn by: R. Frey
Checked by: G. Wedekind
Date: 05/24/22
ECO: 8593.01



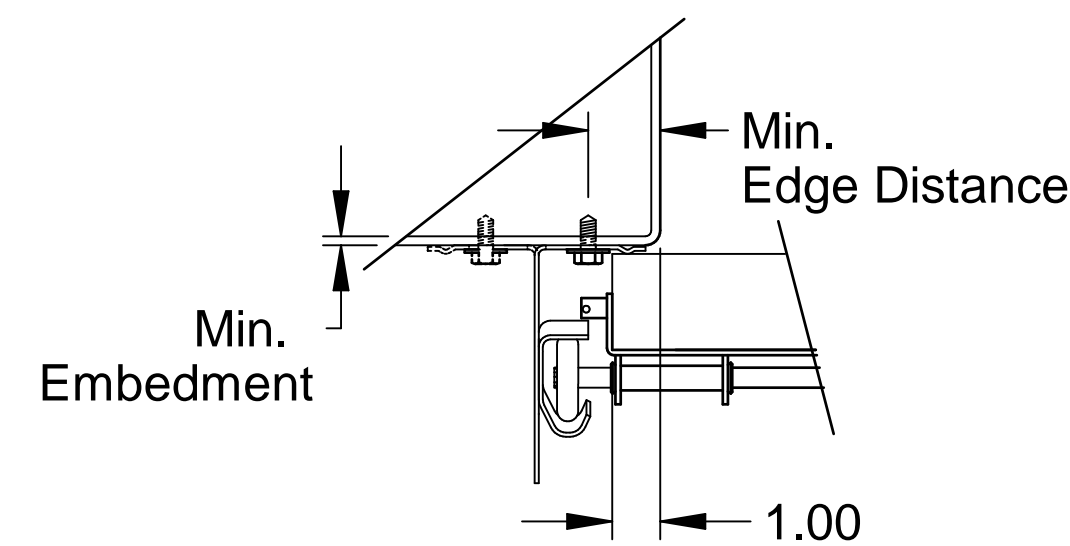
Title: Spec, Wind Load Commercial Encore		
No. P-2449	Sheet 3	Rev A

Angle Mount					
Jamb Type	Fastener Type	Minimum Embedment (in.)	Minimum Edge Distance (in.)	Maximum on Center Spacing (in.)	Allowable Tension Load (lbs.)
2500 PSI Min. Concrete	3/8" ITW Trubolt	2-1/2"	2-1/2"	36"	893
	1/4" Tapcon+ (Plus) with 1-1/8" OD Washer	2"	1-5/8"	36"	687
	1/4" x 2-5/8" Screw-Bolt+ with 9/16" OD Washer	2-1/2"	1-1/2"	36"	651
Steel	5/16" x 1" SAE J78, Min. AISI 1022 with 5/16" Washer	3/16"	1-1/2"	36"	971
Wood	5/16" x 1-3/4" Lag with 5/16" Washer	1-1/2"	1-1/2"	18"	352
Grout Filled CMU Block	3/8" Simpson Titen HD	2-3/4"	4"	18"	480

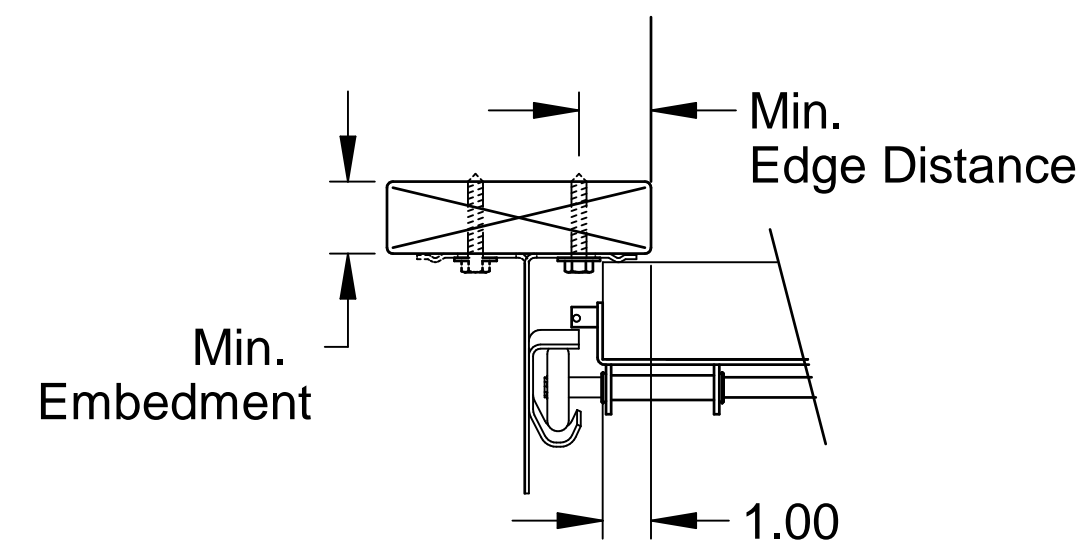
Alternate fasteners may be used if approved by a registered Professional Engineer.



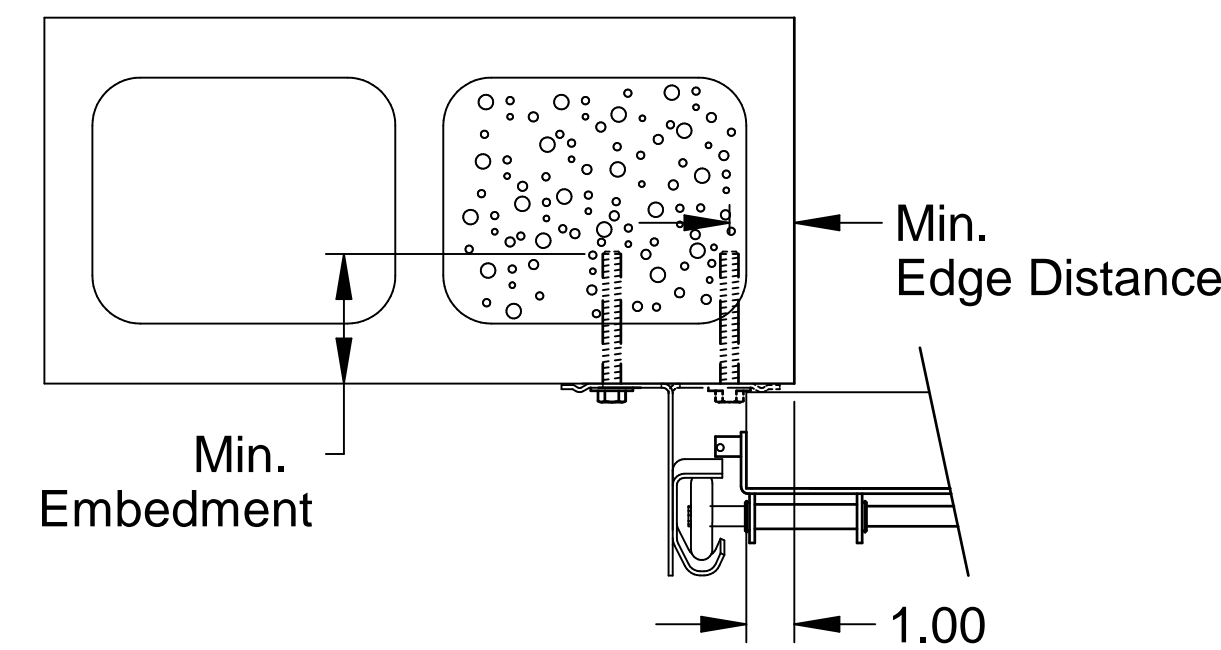
Track Assembly Attachment to 2500 PSI Min. Concrete
 2" Angle mount turned-out standard (solid)
 2" Angle mount turned-in optional (dashed)
 3" Angle mount available



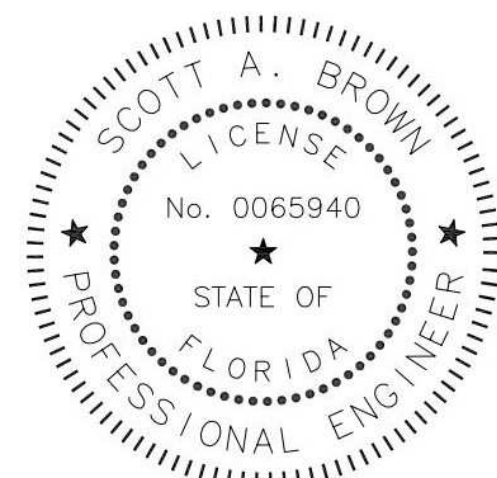
Track Assembly Attachment to 3/16" Min. Steel Jamb
 2" Angle mount turned-out standard (solid)
 2" Angle mount turned-in optional (dashed)
 3" Angle mount available



Track Assembly Attachment to Wood Jamb
 2" Angle mount turned-out standard (solid)
 2" Angle mount turned-in optional (dashed)
 3" Angle mount available



Track Assembly Attachment to Grout Filled CMU Block
 2" Angle mount turned-out standard (solid)
 2" Angle mount turned-in optional (dashed)
 3" Angle mount available

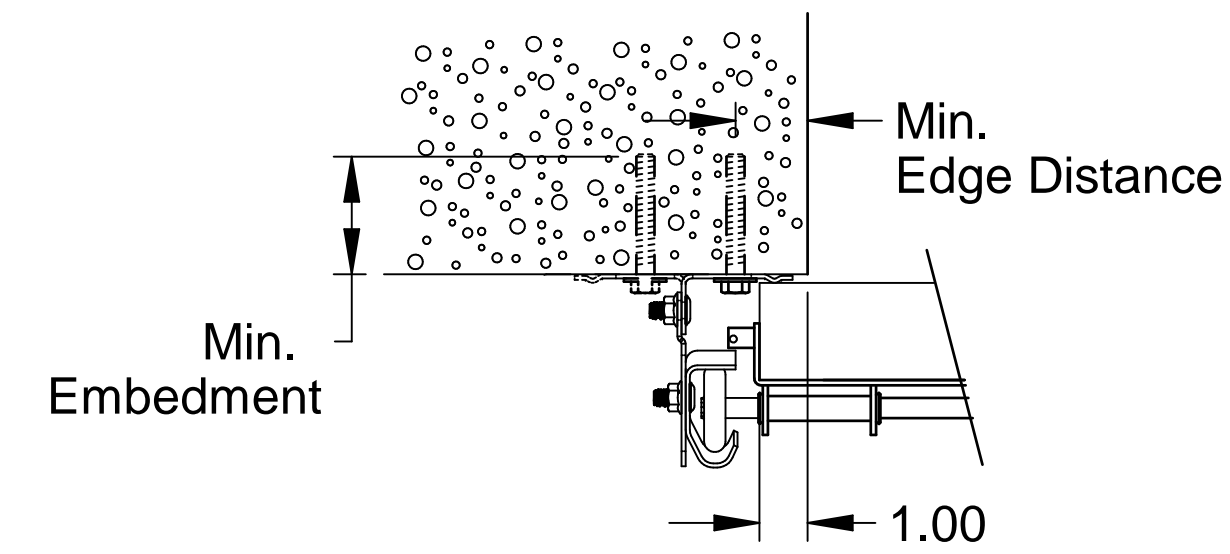


Scott A. Brown, P.E. Lic. No. 65940
 Wender Engineering Services, Inc.
 698 Timber Creek Road, Dixon, IL 61021
 FBPE CA Lic. No. 31544
 Structural Adequacy for Wind Load

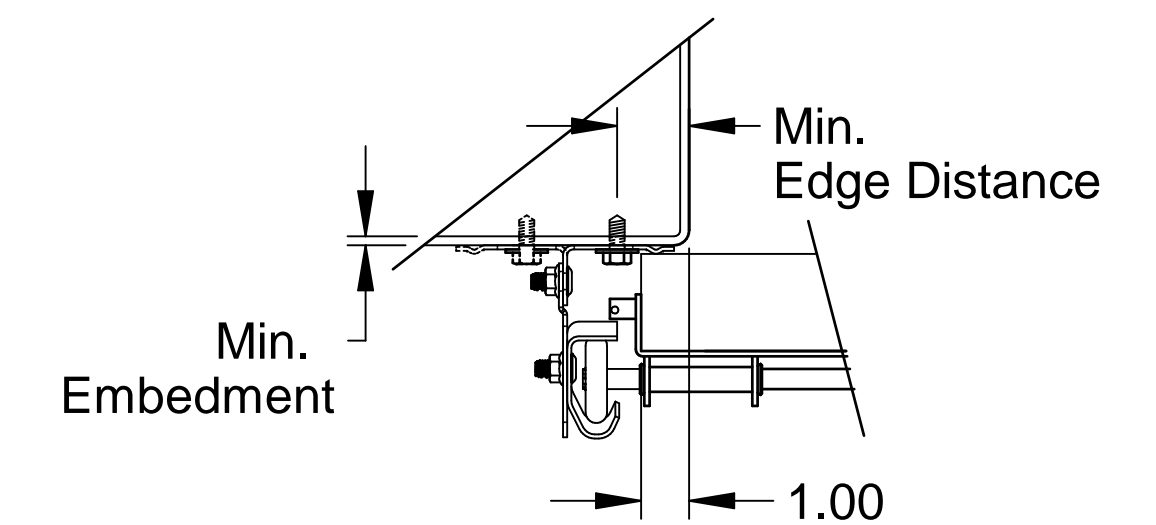
Pre-Assembled Clip Angle					
Jamb Type	Fastener Type	Minimum Embedment (in.)	Minimum Edge Distance (in.)	Maximum on Center Spacing (in.)	Allowable Tension Load (Lbs.)
2500 PSI Min. Concrete	3/8" ITW Trubolt	2-1/2"	2-1/2"	24"	893
	1/4" Tapcon+ (Plus) with 1-1/8" OD Washer	2"	1-5/8"	24"	687
	1/4" x 2-5/8" Screw-Bolt+ with 9/16" OD Washer	2-1/2"	1-1/2"	24"	651
Steel	5/16" x 1" SAE J78, Min. AISI 1022 with 5/16" Washer	3/16"	1-1/2"	24"	971
Wood	5/16" x 1-3/4" Lag with 5/16" Washer	1-1/2"	1-1/2"	*12"	352
Grout Filled CMU Block	3/8" Simpson Titen HD	2-3/4"	4"	*12"	480

* Field drilling req'd.

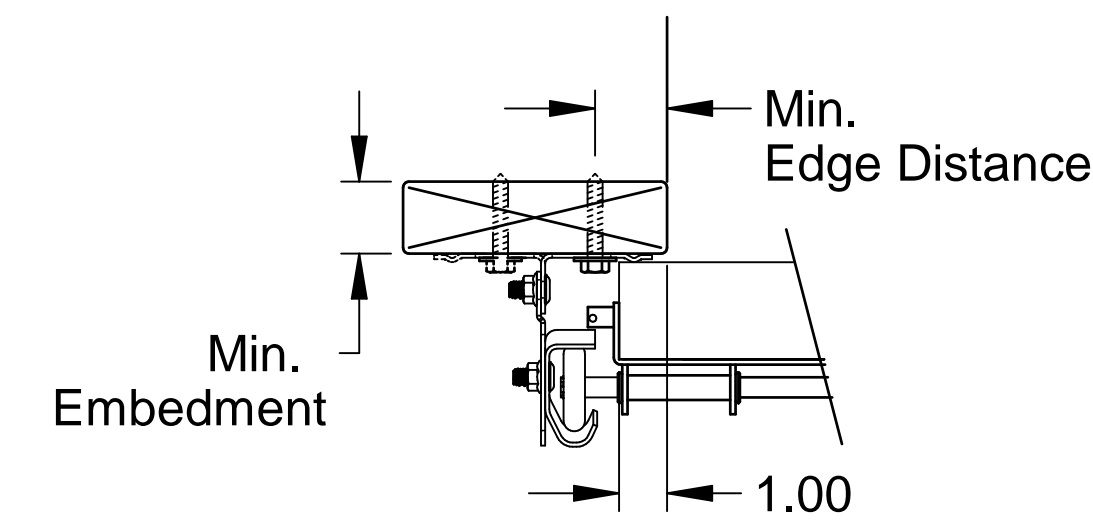
Alternate fasteners may be used if approved by a registered Professional Engineer.



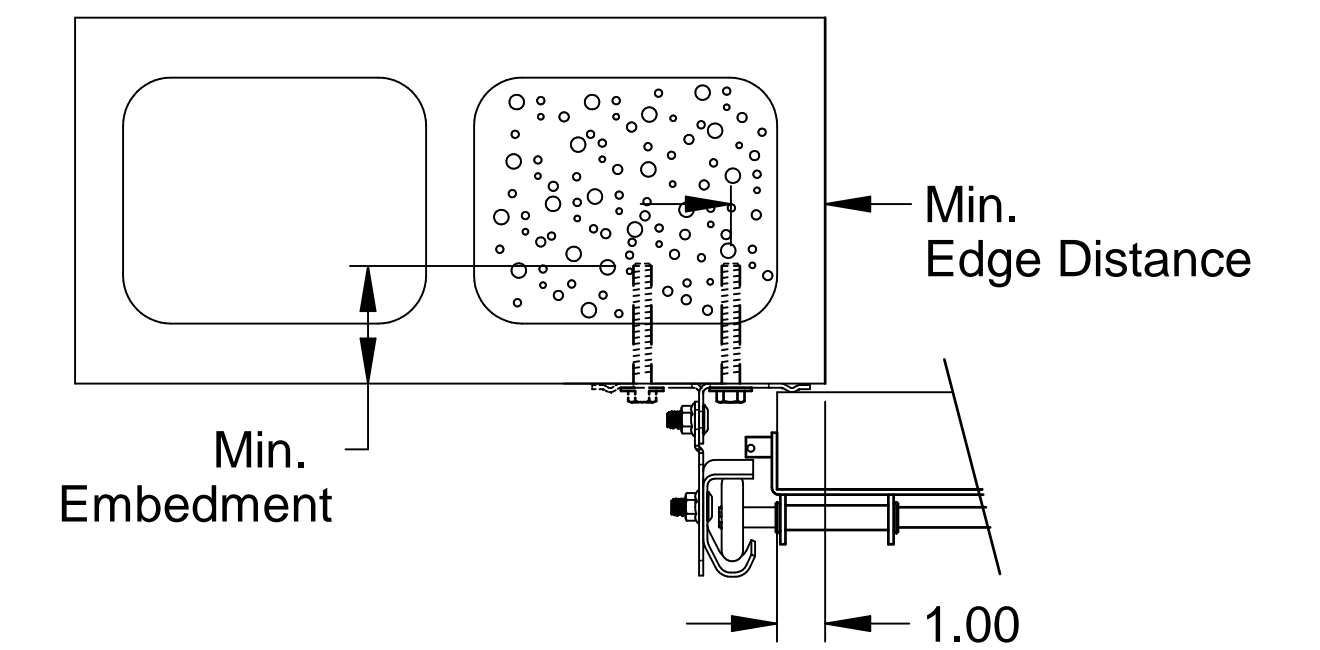
Pre-Assembled Track Assembly Attachment to 2500 PSI Min. Concrete
 2" Clip angle turned-in standard (solid)
 2" Clip angle turned-out optional (dashed)
 3" Clip angle available



Pre-Assembled Track Assembly Attachment to 3/16" Min. Steel Jamb
 2" Clip angle turned-in standard (solid)
 2" Clip angle turned-out optional (dashed)
 3" Clip angle available



Pre-Assembled Track Assembly Attachment to Wood Jamb
 2" Clip angle turned-in standard (solid)
 2" Clip angle turned-out optional (dashed)
 3" Clip angle available



Pre-Assembled Track Assembly Attachment to Grout Filled CMU Block
 2" Clip angle turned-in standard (solid)
 2" Clip angle turned-out optional (dashed)
 3" Clip angle available

Scale: None
Drawn by: R. Frey
Checked by: G. Wedekind
Date: 05/24/22
ECO: 8593.01



Title: Spec, Wind Load Commercial Encore	
No. P-2449	Sheet 4
Rev A	