

LONGBOARD ARCHITECTURAL PRODUCTS

LINK & LOCK BATTEN SYSTEM

(HVHZ)

GENERAL NOTES:

1. THE PRODUCT SHOWN HEREIN IS DESIGNED AND MANUFACTURED TO COMPLY WITH THE CURRENT FLORIDA BUILDING CODE (FBC), **INCLUDING** HVHZ AND HAS BEEN EVALUATED ACCORDING TO THE FOLLOWING:
 - SECTION 1709.8
 - ASTM E8-16
2. ADEQUACY OF THE EXISTING STRUCTURAL CONCRETE/MASONRY AND 2X FRAMING AS A MAIN WIND FORCE RESISTING SYSTEM CAPABLE OF WITHSTANDING AND TRANSFERRING APPLIED PRODUCT LOADS TO THE FOUNDATION IS THE RESPONSIBILITY OF THE ENGINEER OR ARCHITECT OF RECORD FOR THE PROJECT OF INSTALLATION.
3. 2X MEMBERS (WHEN USED) SHALL BE DESIGNED AND ANCHORED TO PROPERLY TRANSFER ALL LOADS TO THE STRUCTURE. BUCK DESIGN AND INSTALLATION IS THE RESPONSIBILITY OF THE ENGINEER OR ARCHITECT OF RECORD FOR THE PROJECT OF INSTALLATION.
4. THE INSTALLATION DETAILS DESCRIBED HEREIN ARE GENERIC AND MAY NOT REFLECT ACTUAL CONDITIONS FOR A SPECIFIC SITE. IF SITE CONDITIONS CAUSE INSTALLATION TO DEVIATE FROM THE REQUIREMENTS DETAILED HEREIN, A LICENSED ENGINEER OR ARCHITECT SHALL PREPARE SITE SPECIFIC DOCUMENTS FOR USE WITH THIS DOCUMENT.
5. ALUMINUM SIDING MEETS THE REQUIREMENTS OF THE CURRENT FBC. APPLICATION OF ALUMINUM SIDING SHALL MEET REQUIREMENTS OF THE CURRENT FBC.
6. ALUMINUM SIDING SPECIFICATIONS:
 - MATERIAL: 6063-T5
 - MINIMUM WALL THICKNESS: 0.064"
7. INSTALLATION OF SIDING ACCESSORIES SUCH AS END CAP AND MOUNTING CLIP SHALL BE DONE IN ACCORDANCE WITH THE FLORIDA BUILDING CODE AND THE MANUFACTURER'S INSTRUCTIONS.

INSTALLATION NOTES:

1. ONE (1) INSTALLATION ANCHOR IS REQUIRED AT EACH ANCHOR LOCATION SHOWN.
2. THE NUMBER OF INSTALLATION ANCHORS DEPICTED IS THE MINIMUM NUMBER OF ANCHORS TO BE USED FOR PRODUCT INSTALLATION.
3. INSTALL INDIVIDUAL INSTALLATION ANCHORS WITHIN A TOLERANCE OF ±1/2 INCH OF THE DEPICTED LOCATION IN THE ANCHOR LAYOUT DETAIL (I.E., WITHOUT CONSIDERATION OF TOLERANCES). TOLERANCES ARE NOT CUMULATIVE FROM ONE INSTALLATION ANCHOR TO THE NEXT.
4. MINIMUM EMBEDMENT AND EDGE DISTANCE EXCLUDE WALL FINISHES, INCLUDING BUT NOT LIMITED TO STUCCO, FOAM, BRICK VENEER, SHEATHING AND SIDING.
5. INSTALLATION ANCHORS AND ASSOCIATED HARDWARE MUST BE MADE OF CORROSION RESISTANT MATERIAL OR HAVE A CORROSION RESISTANT COATING.
6. FOR HOLLOW BLOCK AND GROUT FILLED BLOCK, DO NOT INSTALL INSTALLATION ANCHORS INTO MORTAR JOINTS. EDGE DISTANCE IS MEASURED FROM FREE EDGE OF BLOCK OR EDGE OF MORTAR JOINT INTO FACE SHELL OF BLOCK.
7. INSTALLATION ANCHORS SHALL BE INSTALLED IN ACCORDANCE WITH ANCHOR MANUFACTURER'S INSTALLATION INSTRUCTIONS, AND ANCHORS SHALL NOT BE USED IN SUBSTRATES WITH STRENGTHS LESS THAN THE MINIMUM STRENGTH SPECIFIED BY THE ANCHOR MANUFACTURER.
8. PRODUCT OF WALL MOUNTED SHALL BE INSTALLED IN FRONT OF CBS CONSTRUCTION (ASTM C90) OR 5/8" (5 PLY) PLYWOOD SUPPORTED BY 2X STUDS OR 2X6 – 18 GA. METAL STUDS, EACH AT 16" O.C.
9. INSTALLATION ANCHOR CAPACITIES FOR PRODUCTS HEREIN ARE BASED ON SUBSTRATE MATERIALS WITH THE FOLLOWING PROPERTIES:
 - A. WOOD - MINIMUM SPECIFIC GRAVITY OF 0.55.
 - B. CONCRETE - MINIMUM COMPRESSIVE STRENGTH OF 3000 PSI.
 - C. MASONRY - CMU UNIT STRENGTH CONFORMS TO ASTM C-90, WITH MIN. COMPRESSIVE STRENGTH OF 2000 PSI AND GROUT CONFORMS TO ASTM C 476, MIN. GROUT COMPRESSIVE STRENGTH OF 2000 PSI.
 - D. STEEL - MINIMUM YIELD STRENGTH OF 36 KSI. MINIMUM 18 GA. WALL THICKNESS.
 - E. ALUMINUM - MINIMUM 1/8 INCH THICK 6063-T5 ALUMINUM.

TABLE OF CONTENTS	
SHEET	SHEET DESCRIPTION
1	GENERAL NOTES, INSTALLATION NOTES AND DESIGN PRESSURE TABLE
2	WALL MOUNT INSTALLATION
3	END TO END INSTALLATION
4	LARGER SPAN INSTALLATION
5	DESIGN PRESSURE TABLES
6	COMPONENTS

DESIGN RATING	
INSTALLATION METHOD	DESIGN PRESSURE
WALL MOUNT	+/- 120 PSF
END TO END	SEE SHEET 4
LARGER SPAN	



LONGBOARD®
ARCHITECTURAL PRODUCTS

1777 CLEARBROOK RD #120
ABBOTSFORD, BC V2T 5X5, CANADA
PH: (800) 604-0343

TITLE:

LINK & LOCK BATTEN SYSTEM
(HVHZ)

GENERAL NOTES, INSTALLATION NOTES &
DESIGN PRESSURE TABLE

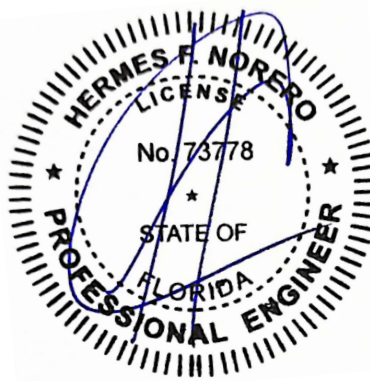
PREPARED BY:

BUILDING DROPS, INC.
398 E. DANIA BEACH BLVD., STE. 338
DANIA BEACH, FL 33004
PH: (954)399-8478
FAX: (954)744-4738
WEB: www.buildingdrops.com



REMARKS	BY	DATE
A. 2023 FBC UPDATE	MS	08/08/2023

THE INSTALLATION DETAILS DESCRIBED HEREIN ARE GENERIC AND MAY NOT REFLECT ACTUAL CONDITIONS FOR A SPECIFIC SITE. IF SITE CONDITIONS CAUSE INSTALLATION TO DEVIATE FROM THE REQUIREMENTS DETAILED HEREIN, A LICENSED ENGINEER OR ARCHITECT SHALL PREPARE SITE SPECIFIC DOCUMENTS FOR USE WITH THIS DOCUMENT.



HERMES F. NORERO, P.E.
FLORIDA P.E. No. 73778
BUILDING DROPS, INC.
398 E. DANIA BEACH BLVD. # 338
DANIA BEACH, FL 33004
FBPE CERT. OF AUTHORIZATION No. 29578

FL #:

FL41842

DATE:

11.04.22

DWG. BY:

MS

CHK. BY:

HFN

SCALE:

NTS

DWG. #:

LBD001

SHEET:

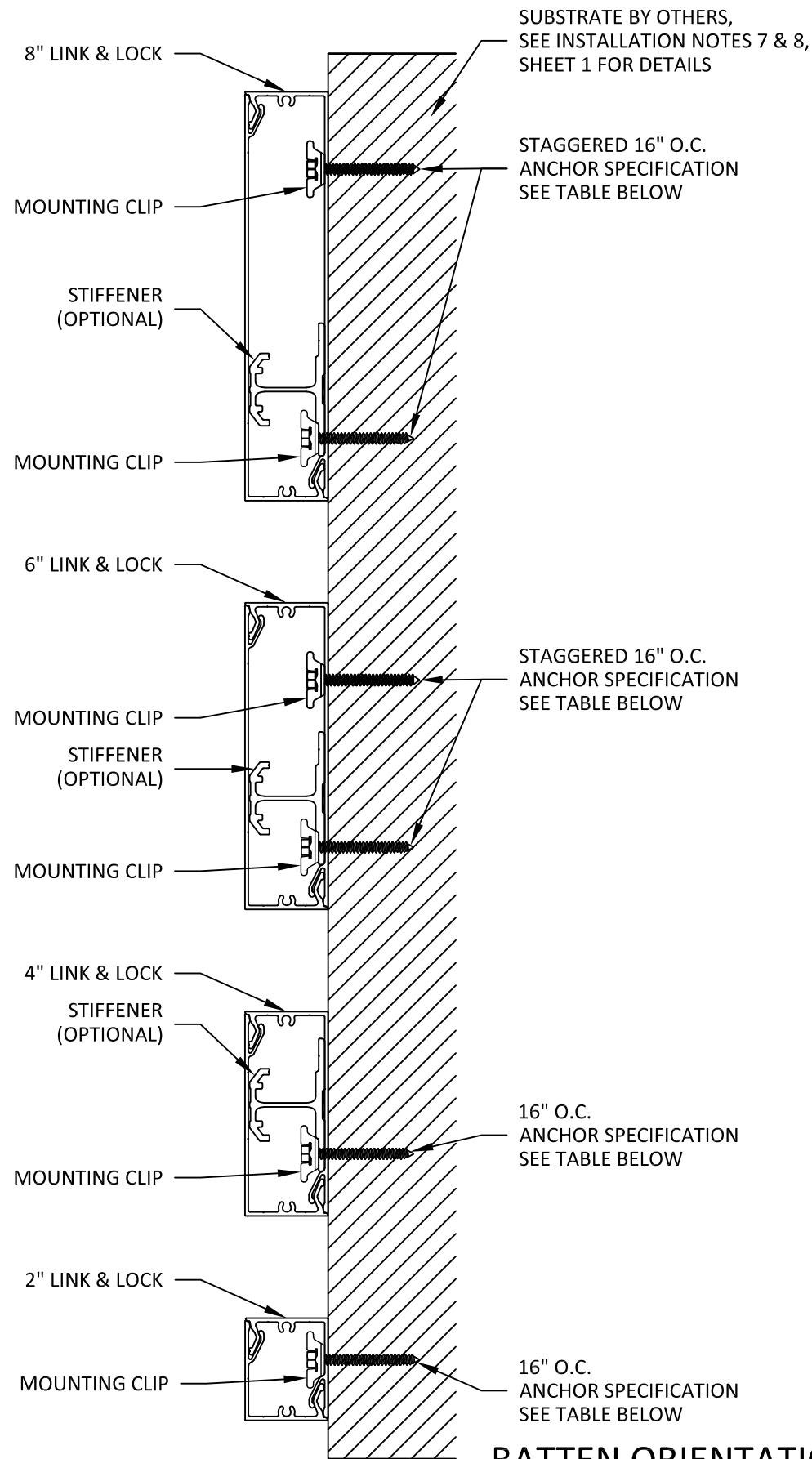
1

OF 6

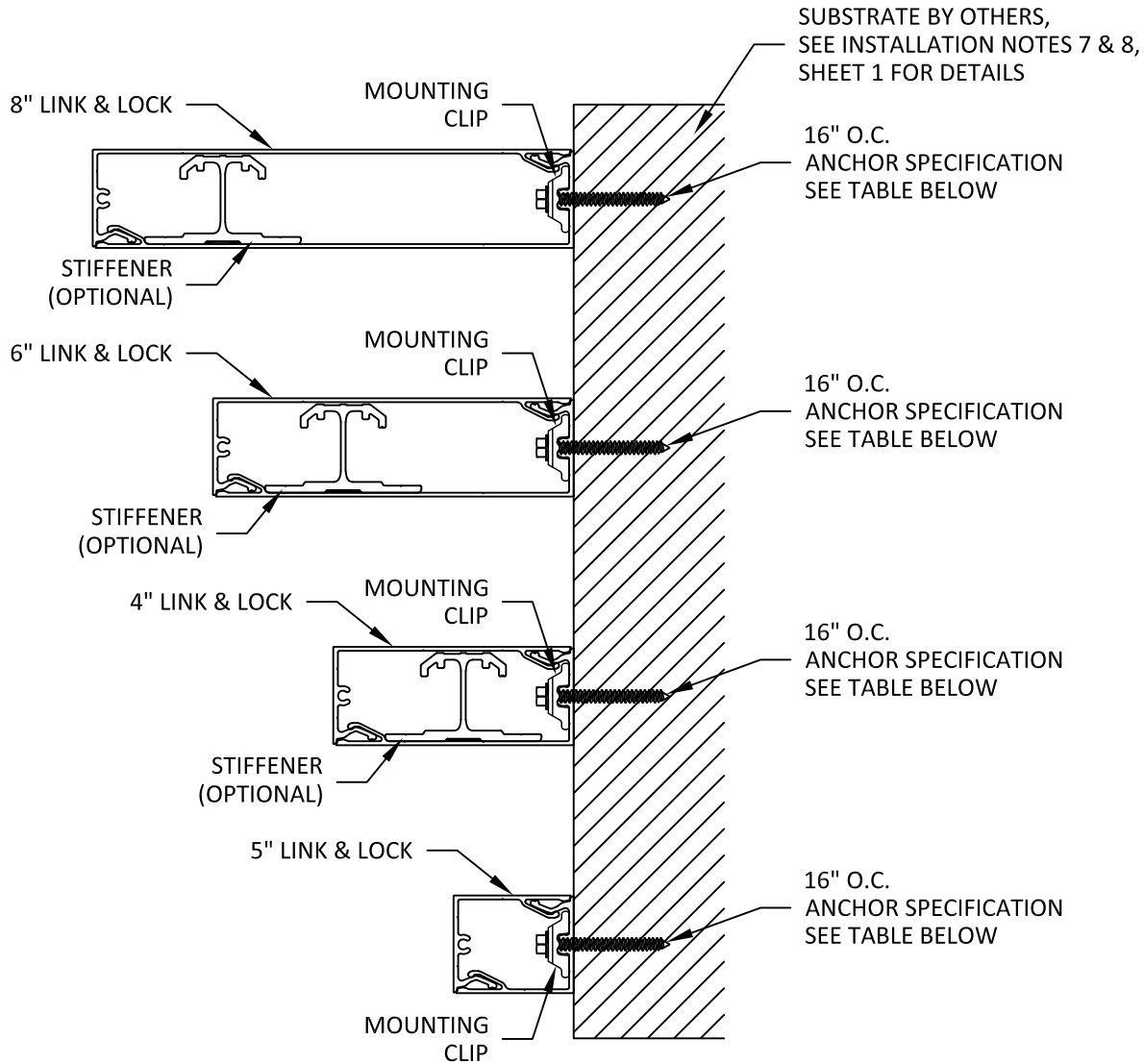
8/10/2023 12:47 PM

s:\projects\longboard architectural products\cc-23-0720.1 - fbc 2023 code change\dwgs\lbd001.dwg

WALL MOUNT INSTALLATION



BATTEN ORIENTATION INSTALLATION



FIN ORIENTATION INSTALLATION

ANCHOR DESCRIPTION	SUBSTRATE	MIN. EMBEDMENT	MIN. EDGE DISTANCE
#12 WOOD SCREW	MIN. S.G. = 0.55 WOOD	1-1/2"	1"
#12 SELF-DRILLING OR SELF-TAPPING SCREW (GRADE 5)	STEEL: MIN. 18 GA., MIN. Fy=33 KSI ALUM.: MIN. 1/8", MIN. 6063-T5	3 THREADS PENETRATION PAST METAL STRUCTURE	1/2"
3/16" ITW TAPCON	CONCRETE MIN. F'C = 3000 PSI	1-1/2"	1-3/4"
	HOLLOW / GROUT-FILLED BLOCK PER C-90 MIN. F'C = 2000 PSI	1"	2"



1777 CLEARBROOK RD #120
ABBOTSFORD, BC V2T 5X5, CANADA
PH: (800) 604-0343

TITLE:
LINK & LOCK BATTEN SYSTEM (HVHZ)

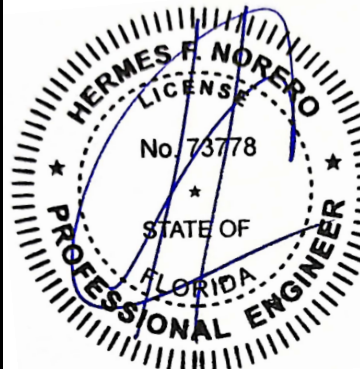
WALL MOUNT INSTALLATION

PREPARED BY:
BUILDING DROPS, INC.
398 E. DANIA BEACH BLVD., STE. 338
DANIA BEACH, FL 33004
PH: (954) 399-8478
FAX: (954) 744-4738
WEB: www.buildingdrops.com



REMARKS	BY	DATE
A. 2023 FBC UPDATE	MS	08/08/2023

THE INSTALLATION DETAILS DESCRIBED HEREIN ARE GENERIC AND MAY NOT REFLECT ACTUAL CONDITIONS FOR A SPECIFIC SITE. IF SITE CONDITIONS CAUSE INSTALLATION TO DEVIATE FROM THE REQUIREMENTS DETAILED HEREIN, A LICENSED ENGINEER OR ARCHITECT SHALL PREPARE SITE SPECIFIC DOCUMENTS FOR USE WITH THIS DOCUMENT.

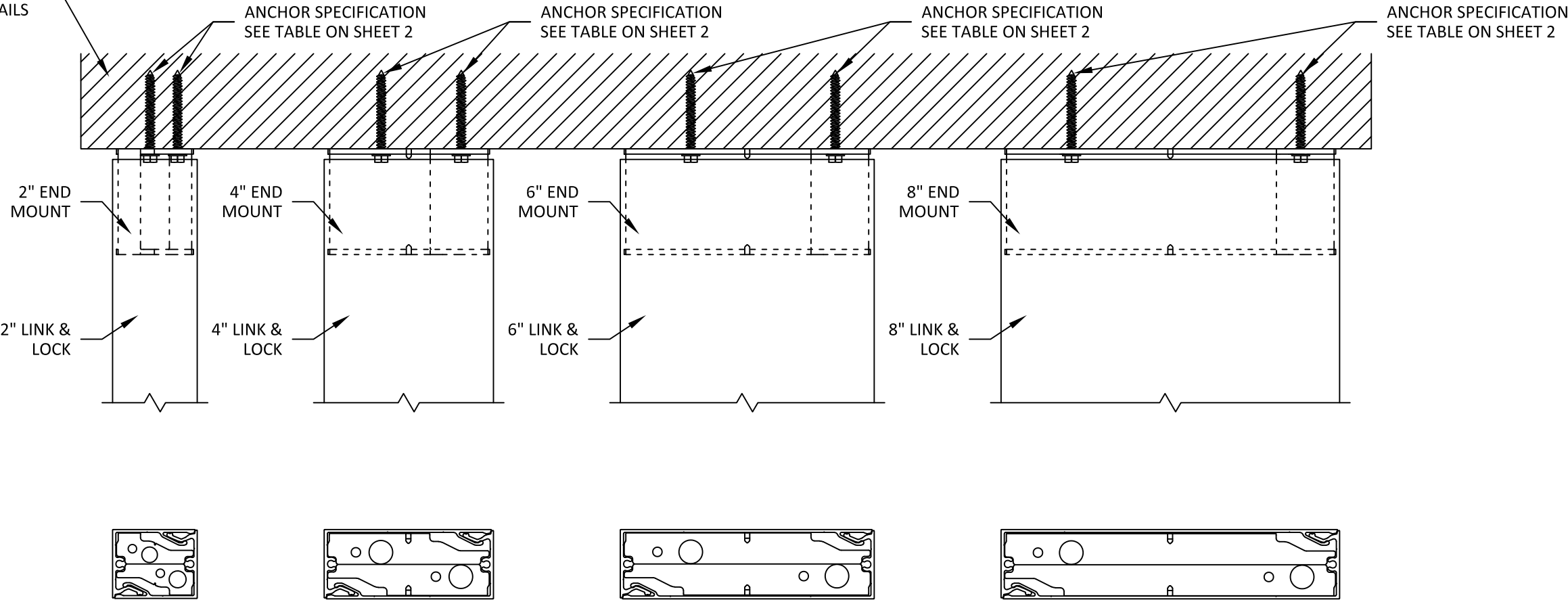


HERMES F. NORERO, P.E.
FLORIDA P.E. No 73778
BUILDING DROPS, INC.
398 E. DANIA BEACH BLVD. # 338
DANIA BEACH, FL 33004
FBPE CERT. OF AUTHORIZATION No. 29578

FL #:	FL41842
DATE:	11.04.22
DWG. BY:	CHK. BY:
MS	HFN
SCALE:	NTS
DWG. #:	LBD001
SHEET:	2

END TO END INSTALLATION

SUBSTRATE BY OTHERS,
SEE INSTALLATION NOTE 8,
SHEET 1 FOR DETAILS



1777 CLEARBROOK RD #120
ABBOTSFORD, BC V2T 5X5, CANADA
PH: (800) 604-0343

TITLE:
LINK & LOCK BATTEN SYSTEM
(HVHZ)

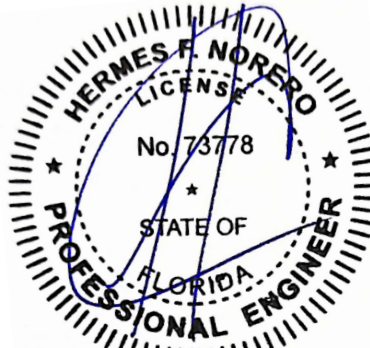
END TO END INSTALLATION

PREPARED BY:
BUILDING DROPS, INC.
398 E. DANIA BEACH BLVD., STE. 338
DANIA BEACH, FL 33004
PH: (954) 399-8478
FAX: (954) 744-4738
WEB: www.buildingdrops.com



REMARKS	BY	DATE
A. 2023 FBC UPDATE	MS	08/08/2023

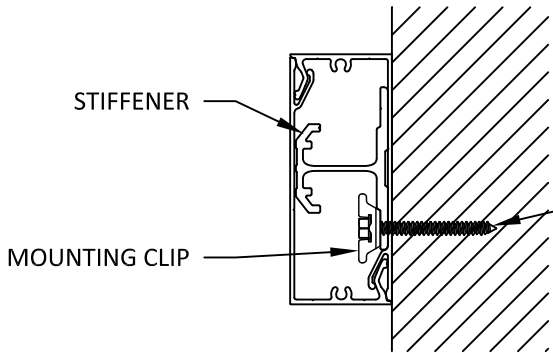
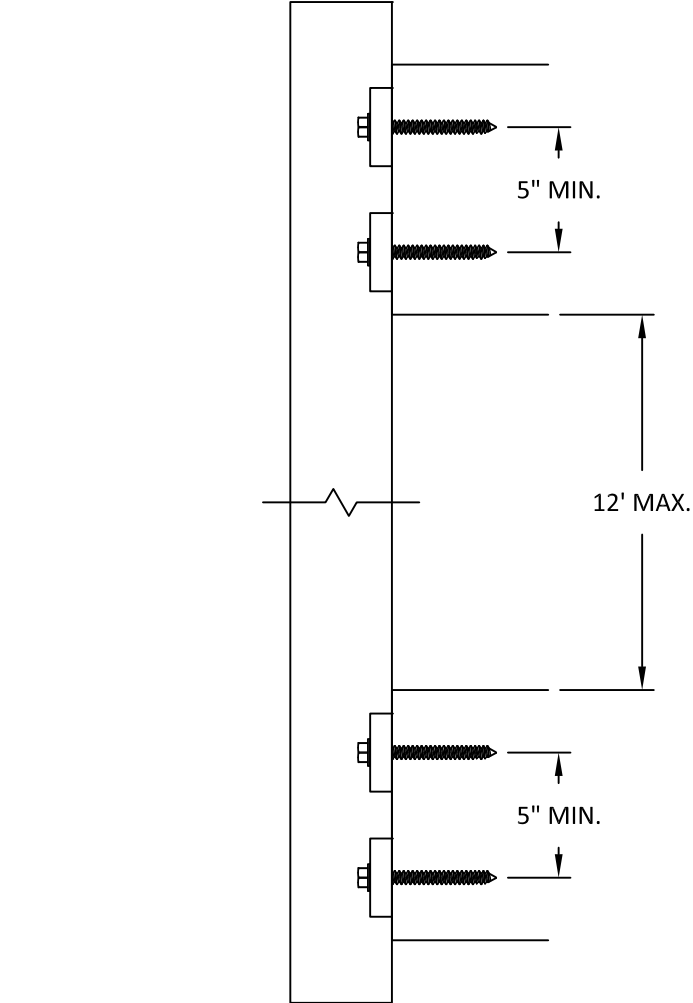
THE INSTALLATION DETAILS DESCRIBED HEREIN ARE GENERIC AND MAY NOT REFLECT ACTUAL CONDITIONS FOR A SPECIFIC SITE. IF SITE CONDITIONS CAUSE INSTALLATION TO DEVIATE FROM THE REQUIREMENTS DETAILED HEREIN, A LICENSED ENGINEER OR ARCHITECT SHALL PREPARE SITE SPECIFIC DOCUMENTS FOR USE WITH THIS DOCUMENT.



HERMES F. NORERO, P.E.
FLORIDA P.E. No 73778
BUILDING DROPS, INC
398 E. DANIA BEACH BLVD. # 338
DANIA BEACH, FL 33004
FBPE CERT. OF AUTHORIZATION No. 29578

FL #:	FL41842
DATE:	11.04.22
DWG. BY:	CHK. BY:
MS	HFN
SCALE:	NTS
DWG. #:	LBD001
SHEET:	3

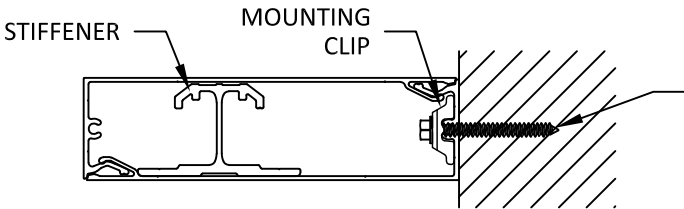
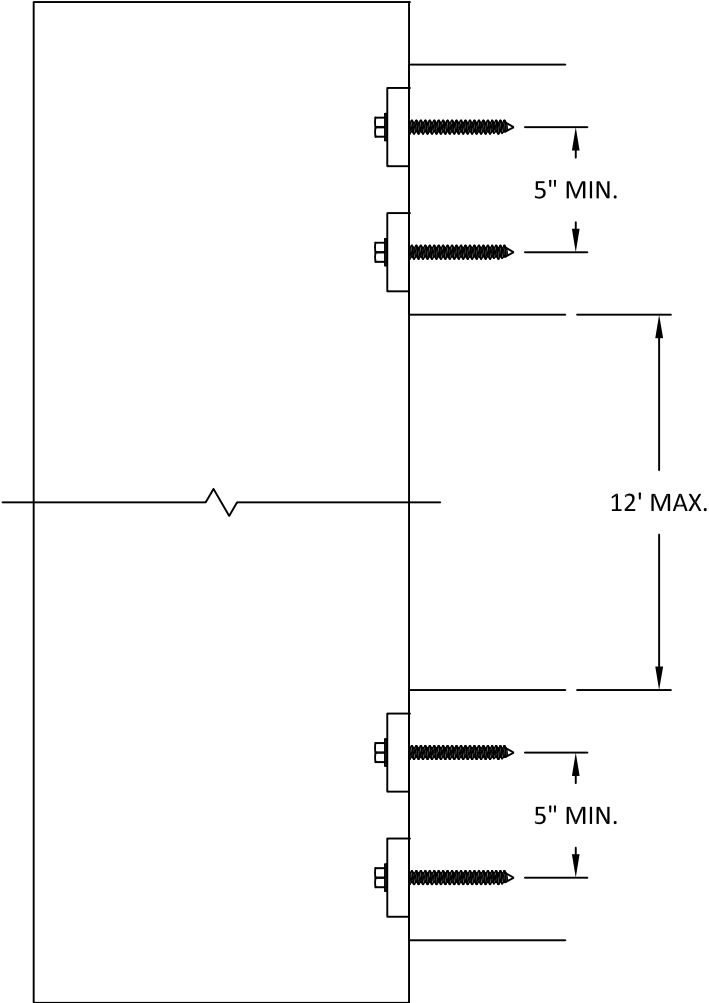
LARGER SPAN INSTALLATION



BATTEN ORIENTATION INSTALLATION

* 4", 6" LINK & LOCK
BATTEN SHOWN, ALL
OPTIONS QUALIFIED

ANCHOR SPECIFICATION
SEE TABLE ON SHEET 2



FIN ORIENTATION INSTALLATION



LONGBOARD®
ARCHITECTURAL PRODUCTS

1777 CLEARBROOK RD #120
ABBOTSFORD, BC V2T 5X5, CANADA
PH: (800) 604-0343

TITLE:
LINK & LOCK BATTEN SYSTEM
(HVHZ)

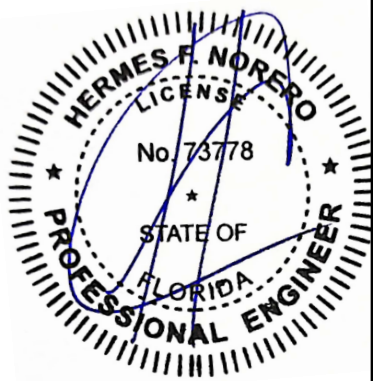
LARGER SPAN INSTALLATION

PREPARED BY:

BUILDING DROPS, INC.
398 E. DANIA BEACH BLVD., STE. 338
DANIA BEACH, FL 33004
PH: (954)399-8478
FAX: (954)744-4738
WEB: www.buildingdrops.com

REMARKS	BY	DATE
A. 2023 FBC UPDATE	MS	08/08/2023

THE INSTALLATION DETAILS DESCRIBED HEREIN ARE GENERIC AND MAY NOT REFLECT ACTUAL CONDITIONS FOR A SPECIFIC SITE. IF SITE CONDITIONS CAUSE INSTALLATION TO DEVIATE FROM THE REQUIREMENTS DETAILED HEREIN, A LICENSED ENGINEER OR ARCHITECT SHALL PREPARE SITE SPECIFIC DOCUMENTS FOR USE WITH THIS DOCUMENT.



HERMES F. NORERO, P.E.
FLORIDA P.E. No 73778
BUILDING DROPS, INC
398 E. DANIA BEACH BLVD. # 338
DANIA BEACH, FL 33004
FBPE CERT. OF AUTHORIZATION No. 29578

FL #:	FL41842
DATE:	11.04.22
DWG. BY:	MS
CHK. BY:	HFN
SCALE:	NTS
DWG. #:	LBD001
SHEET:	4

8/10/2023 12:47 PM

s:\projects\longboard architectural products\cc-23-0720.1 - fbc 2023 code change\dwgs\lbd001.dwg


DESIGN PRESSURE TABLES

ULTIMATE DESIGN PRESSURE* (PSF)	ALLOWABLE DESIGN PRESSURE* (PSF)	LINK & LOCK BATTEN MAX. ALLOWABLE SPAN (FT)			
		2" LINK & LOCK	4" LINK & LOCK	6" LINK & LOCK	8" LINK & LOCK
30	18	10	8	6	6
40	24	8	6	6	4
50	30	8	6	4	4
60	36	6	4	4	2
70	42	6	4	4	2
80	48	6	2	4	2
90	54	6	2	4	2
100	60	6	2	4	2
110	66	6	2	4	2
120	72	4	2	2	2

*NOTE: ALLOWABLE DP = ULTIMATE DP X 0.6

ULTIMATE DESIGN PRESSURE* (PSF)	ALLOWABLE DESIGN PRESSURE* (PSF)	LINK & LOCK BATTEN W/ STIFFENER MAX. ALLOWABLE SPAN (FT)		
		4" LINK & LOCK	6" LINK & LOCK	8" LINK & LOCK
30	18	12	10	8
40	24	10	8	6
50	30	8	6	4
60	36	8	6	4
70	42	6	4	4
80	48	6	4	4
90	54	4	4	4
100	60	4	4	4
110	66	4	4	4
120	72	4	4	2

*NOTE: ALLOWABLE DP = ULTIMATE DP X 0.6



1777 CLEARBROOK RD #120
ABBOTSFORD, BC V2T 5X5, CANADA
PH: (800) 604-0343

TITLE:
LINK & LOCK BATTEN SYSTEM
(HVHZ)
DESIGN PRESSURE TABLES

PREPARED BY:
BUILDING DROPS, INC.
398 E. DANIA BEACH BLVD., STE. 338
DANIA BEACH, FL 33004
PH: (954)399-8478
FAX: (954)744-4738
WEB: www.buildingdrops.com

REMARKS

BY

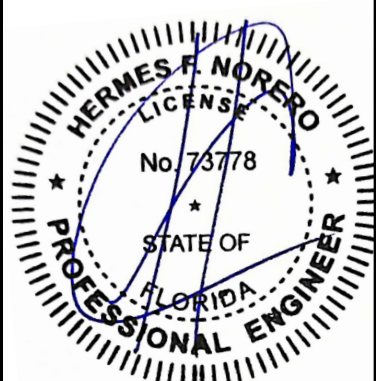
DATE

A. 2023 FBC UPDATE

MS

08/08/2023

THE INSTALLATION DETAILS DESCRIBED HEREIN ARE GENERIC AND MAY NOT REFLECT ACTUAL CONDITIONS FOR A SPECIFIC SITE. IF SITE CONDITIONS CAUSE INSTALLATION TO DEVIATE FROM THE REQUIREMENTS DETAILED HEREIN, A LICENSED ENGINEER OR ARCHITECT SHALL PREPARE SITE SPECIFIC DOCUMENTS FOR USE WITH THIS DOCUMENT.



HERMES F. NORERO, P.E.
FLORIDA P.E. No 73778
BUILDING DROPS, INC
398 E. DANIA BEACH BLVD. # 338
DANIA BEACH, FL 33004
FBPE CERT. OF AUTHORIZATION No. 29578

FL #:

FL41842

DATE:

11.04.22

DWG. BY:

MS

CHK. BY:

HFN

SCALE:

NTS

DWG. #:

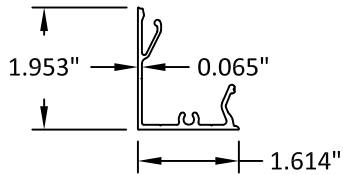
LBD001

SHEET:

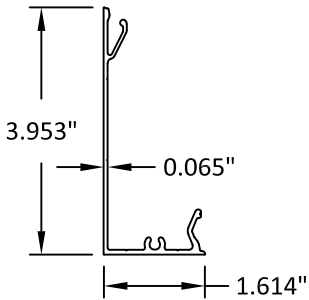
5

OF 6

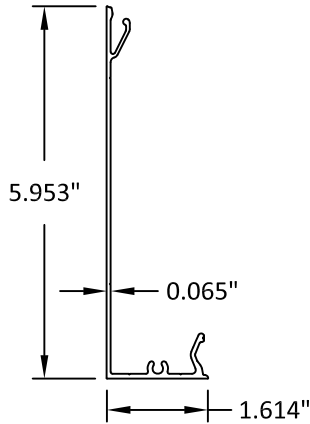
COMPONENTS



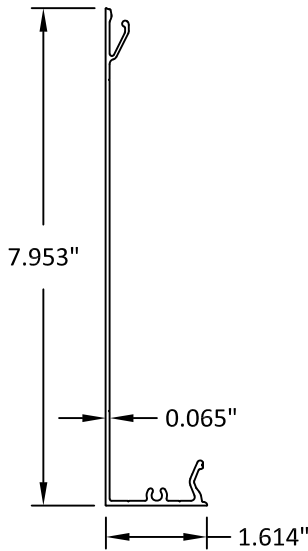
2" LINK & LOCK



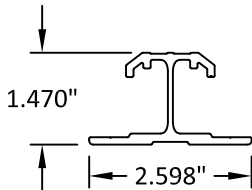
4" LINK & LOCK



6" LINK & LOCK



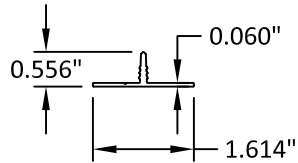
8" LINK & LOCK



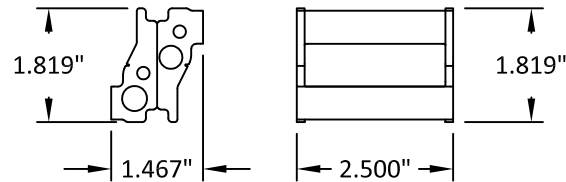
STIFFENER



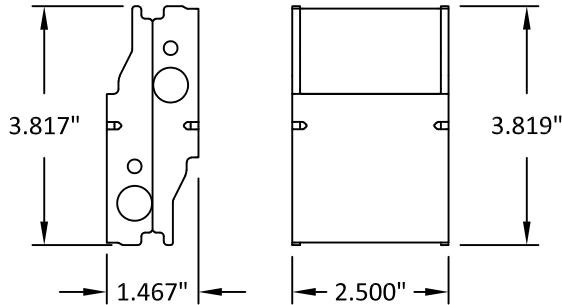
MOUNTING CLIP



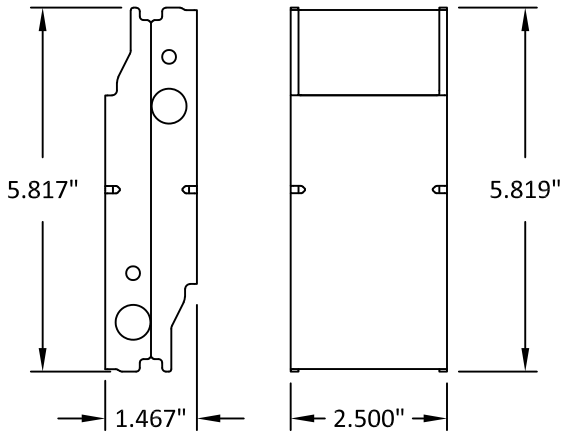
END CAP



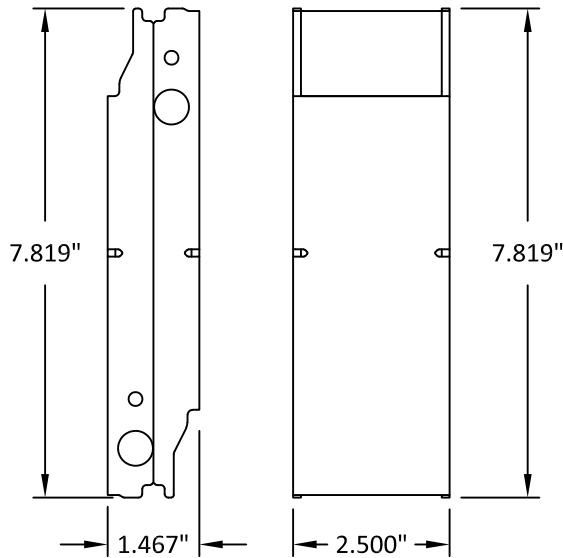
2" END MOUNT



4" END MOUNT



6" END MOUNT



8" END MOUNT



LONGBOARD®
ARCHITECTURAL PRODUCTS

1777 CLEARBROOK RD #120
ABBOTSFORD, BC V2T 5X5, CANADA
PH: (800) 604-0343

TITLE:
LINK & LOCK BATTEN SYSTEM
(HVHZ)
COMPONENTS

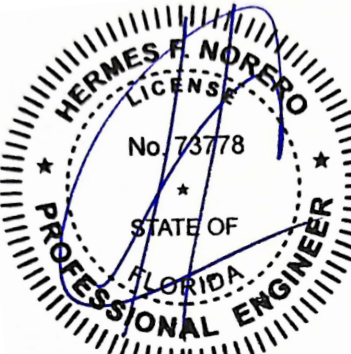
PREPARED BY:
BUILDING DROPS, INC.
398 E. DANIA BEACH BLVD., STE. 338
DANIA BEACH, FL 33004
PH: (954) 399-8478
FAX: (954) 744-4738
WEB: www.buildingdrops.com



BUILDING DROPS

REMARKS	BY	DATE
A. 2023 FBC UPDATE	MS	08/08/2023

THE INSTALLATION DETAILS DESCRIBED HEREIN ARE GENERIC AND MAY NOT REFLECT ACTUAL CONDITIONS FOR A SPECIFIC SITE. IF SITE CONDITIONS CAUSE INSTALLATION TO DEVIATE FROM THE REQUIREMENTS DETAILED HEREIN, A LICENSED ENGINEER OR ARCHITECT SHALL PREPARE SITE SPECIFIC DOCUMENTS FOR USE WITH THIS DOCUMENT.



HERMES F. NORERO, P.E.
FLORIDA P.E. No 73778
BUILDING DROPS, INC.
398 E. DANIA BEACH BLVD. # 338
DANIA BEACH, FL 33004
FBPE CERT. OF AUTHORIZATION No. 29578

FL #:
FL41842

DATE:
11.04.22

DWG. BY:
MS

CHK. BY:
HFN

SCALE:
NTS

DWG. #:
LBD001

SHEET:
6

OF 6