

# LONGBOARD ARCHITECTURAL PRODUCTS

## LINK & LOCK HD BATTEN SYSTEM

### (HVHZ)

#### GENERAL NOTES:

- THE PRODUCT SHOWN HEREIN IS DESIGNED AND MANUFACTURED TO COMPLY WITH THE CURRENT FLORIDA BUILDING CODE (FBC), **INCLUDING** HVHZ AND HAS BEEN EVALUATED ACCORDING TO THE FOLLOWING:
  - SECTION 1709.8
  - ASTM E8-16
- ADEQUACY OF THE EXISTING STRUCTURAL CONCRETE/MASONRY AND 2X FRAMING AS A MAIN WIND FORCE RESISTING SYSTEM CAPABLE OF WITHSTANDING AND TRANSFERRING APPLIED PRODUCT LOADS TO THE FOUNDATION IS THE RESPONSIBILITY OF THE ENGINEER OR ARCHITECT OF RECORD FOR THE PROJECT OF INSTALLATION.
- THE INSTALLATION DETAILS DESCRIBED HEREIN ARE GENERIC AND MAY NOT REFLECT ACTUAL CONDITIONS FOR A SPECIFIC SITE. IF SITE CONDITIONS CAUSE INSTALLATION TO DEVIATE FROM THE REQUIREMENTS DETAILED HEREIN, A LICENSED ENGINEER OR ARCHITECT SHALL PREPARE SITE SPECIFIC DOCUMENTS FOR USE WITH THIS DOCUMENT.
- ALUMINUM BATTEN MEETS THE REQUIREMENTS OF THE CURRENT FBC. APPLICATION OF ALUMINUM BATTEN SHALL MEET REQUIREMENTS OF THE CURRENT FBC.
- ALUMINUM BATTEN SPECIFICATIONS:
  - MATERIAL: 6063-T5
  - MINIMUM WALL THICKNESS: 0.120"
- INSTALLATION OF BATTEN ACCESSORIES SUCH AS END CAP AND MOUNTING CLIP SHALL BE DONE IN ACCORDANCE WITH THE FLORIDA BUILDING CODE AND THE MANUFACTURER'S INSTRUCTIONS.

#### INSTALLATION NOTES:

- ONE (1) INSTALLATION ANCHOR IS REQUIRED AT EACH ANCHOR LOCATION SHOWN.
- THE NUMBER OF INSTALLATION ANCHORS DEPICTED IS THE MINIMUM NUMBER OF ANCHORS TO BE USED FOR PRODUCT INSTALLATION.
- INSTALL INDIVIDUAL INSTALLATION ANCHORS WITHIN A TOLERANCE OF ±1/2 INCH OF THE DEPICTED LOCATION IN THE ANCHOR LAYOUT DETAIL (I.E., WITHOUT CONSIDERATION OF TOLERANCES). TOLERANCES ARE NOT CUMULATIVE FROM ONE INSTALLATION ANCHOR TO THE NEXT.
- MINIMUM EMBEDMENT AND EDGE DISTANCE EXCLUDE WALL FINISHES, INCLUDING BUT NOT LIMITED TO STUCCO, FOAM, BRICK VENEER, SHEATHING AND BATTEN.
- INSTALLATION ANCHORS AND ASSOCIATED HARDWARE MUST BE MADE OF CORROSION RESISTANT MATERIAL OR HAVE A CORROSION RESISTANT COATING.
- FOR HOLLOW BLOCK AND GROUT FILLED BLOCK, DO NOT INSTALL INSTALLATION ANCHORS INTO MORTAR JOINTS. EDGE DISTANCE IS MEASURED FROM FREE EDGE OF BLOCK OR EDGE OF MORTAR JOINT INTO FACE SHELL OF BLOCK.
- INSTALLATION ANCHORS SHALL BE INSTALLED IN ACCORDANCE WITH ANCHOR MANUFACTURER'S INSTALLATION INSTRUCTIONS, AND ANCHORS SHALL NOT BE USED IN SUBSTRATES WITH STRENGTHS LESS THAN THE MINIMUM STRENGTH SPECIFIED BY THE ANCHOR MANUFACTURER.
- WHEN PRODUCT IS INSTALLED TO THE BUILDING ENVELOP, IT SHALL BE INSTALLED OVER WALLS COMPLYING WITH THE MINIMUM REQUIREMENTS OF FBC SECTION 1624.
- INSTALLATION ANCHOR CAPACITIES FOR PRODUCTS HEREIN ARE BASED ON SUBSTRATE MATERIALS WITH THE FOLLOWING PROPERTIES:
  - WOOD - MINIMUM SPECIFIC GRAVITY OF 0.55.
  - CONCRETE -MINIMUM COMPRESSIVE STRENGTH OF 3000 PSI.
  - MASONRY - CMU UNIT STRENGTH CONFORMS TO ASTM C-90, WITH MIN. COMPRESSIVE STRENGTH OF 2000 PSI AND GROUT CONFORMS TO ASTM C 476, MIN. GROUT COMPRESSIVE STRENGTH OF 2000 PSI.
  - STEEL - MINIMUM YIELD STRENGTH OF 36 KSI. MINIMUM 18 GA. WALL THICKNESS.
  - ALUMINUM - MINIMUM 1/8 INCH THICK 6063-T5 ALUMINUM.

TABLE OF CONTENTS	
SHEET	SHEET DESCRIPTION
1	GENERAL NOTES & INSTALLATION NOTES
2	WALL MOUNT INSTALLATION : VERTICAL SECTION
3	WALL MOUNT INSTALLATION : HORIZONTAL SECTION
4	END TO END INSTALLATION & DESIGN PRESSURE TABLE
5	LARGER SPAN - END TO END INSTALLATION & ANCHOR SCHEDULE
6	COMPONENTS & BILL OF MATERIALS

DESIGN RATING	
INSTALLATION METHOD	DESIGN PRESSURE
WALL MOUNT	SEE SHEET 4
END TO END	



LONGBOARD ARCHITECTURAL PRODUCTS  
1777 CLEARBROOK RD #120  
ABBOTSFORD, BC V2T 5X5, CANADA  
PH: (800) 604-0343

TITLE:  
LINK & LOCK HD BATTEN SYSTEM  
(HVHZ)

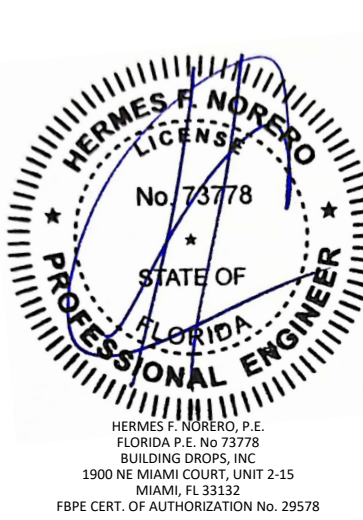
GENERAL NOTES, INSTALLATION NOTES &  
DESIGN RATING

PREPARED BY:  
 BUILDING DROPS

BUILDING DROPS, INC.  
1900 NE MIAMI CT UNIT 2-15  
MIAMI, FL 33132  
PH: (954)399-8478  
FAX: (954)744-4738  
WEB: www.buildingdrops.com

REMARKS	BY	DATE

THE INSTALLATION DETAILS DESCRIBED HEREIN ARE GENERIC AND MAY NOT REFLECT ACTUAL CONDITIONS FOR A SPECIFIC SITE. IF SITE CONDITIONS CAUSE INSTALLATION TO DEVIATE FROM THE REQUIREMENTS DETAILED HEREIN, A LICENSED ENGINEER OR ARCHITECT SHALL PREPARE SITE SPECIFIC DOCUMENTS FOR USE WITH THIS DOCUMENT.



FL #:  
**FL41842**

DATE:  
**05.20.24**

DWG. BY:  
**FB**

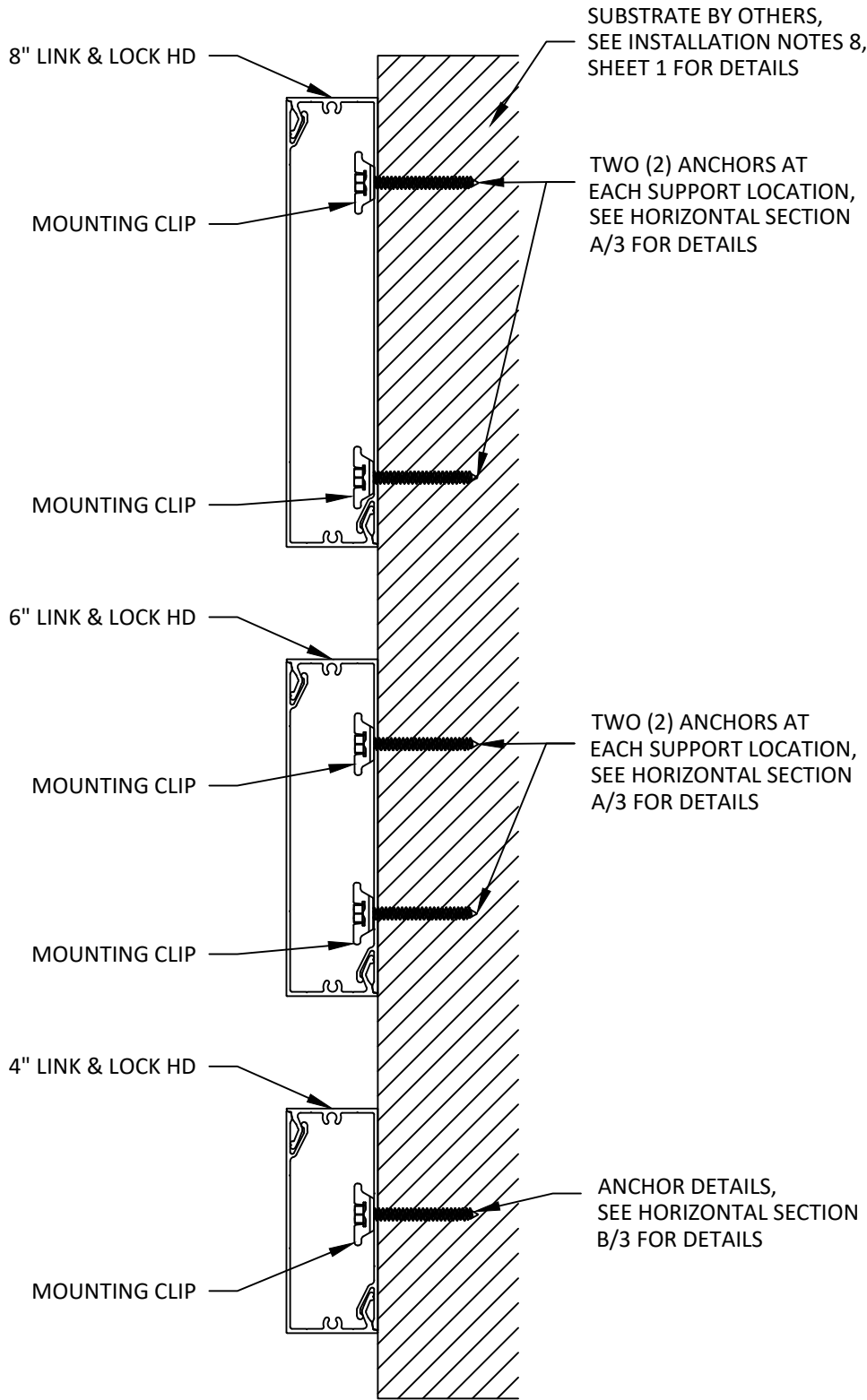
CHK. BY:  
**HFN**

SCALE:  
**NTS**

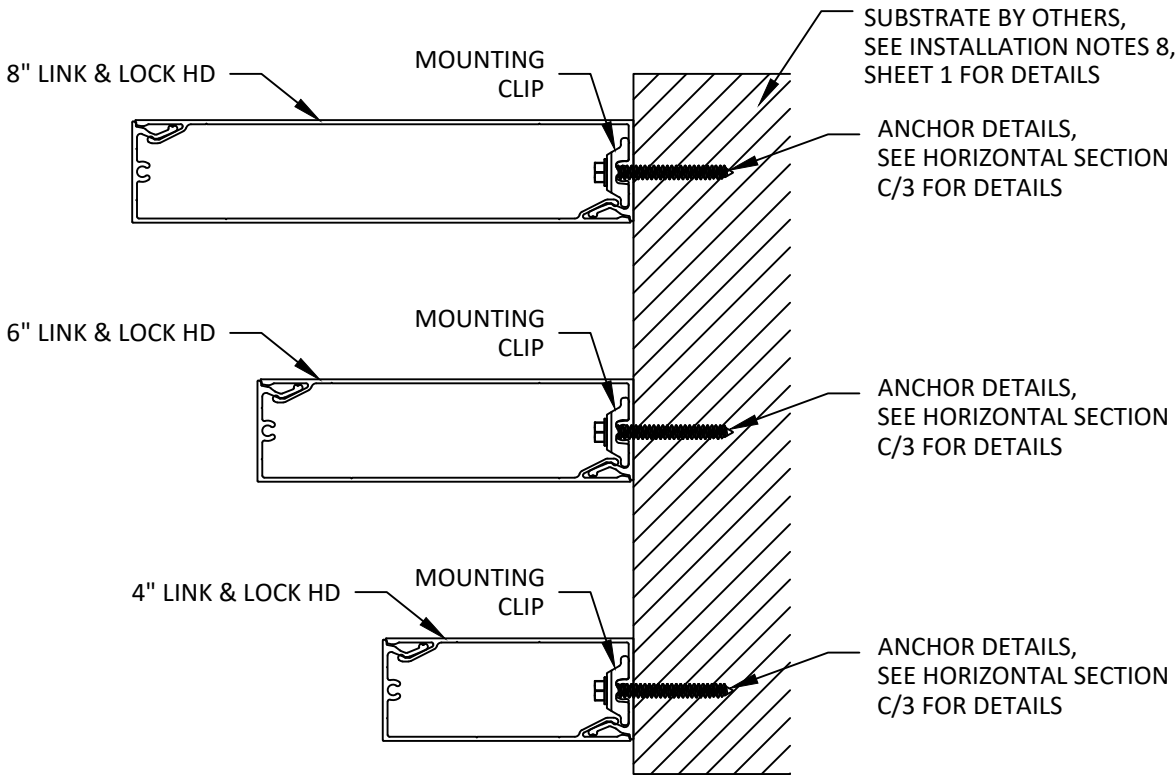
DWG. #:  
**LBD004**

SHEET:  
**1**

WALL MOUNT INSTALLATION



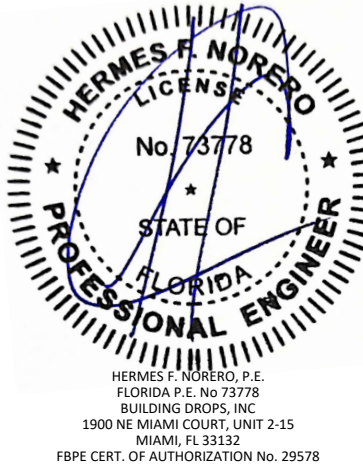
**A**  
2 VERTICAL SECTION  
BATTEN ORIENTATION INSTALLATION



**B**  
3 VERTICAL SECTION  
FIN ORIENTATION INSTALLATION

REMARKS	BY	DATE

THE INSTALLATION DETAILS DESCRIBED HEREIN ARE GENERIC AND MAY NOT REFLECT ACTUAL CONDITIONS FOR A SPECIFIC SITE. IF SITE CONDITIONS CAUSE INSTALLATION TO DEVIATE FROM THE REQUIREMENTS DETAILED HEREIN, A LICENSED ENGINEER OR ARCHITECT SHALL PREPARE SITE SPECIFIC DOCUMENTS FOR USE WITH THIS DOCUMENT.



FL #:  
**FL41842**

DATE: **05.20.24**

DWG. BY: <b>FB</b>	CHK. BY: <b>HFN</b>
-----------------------	------------------------

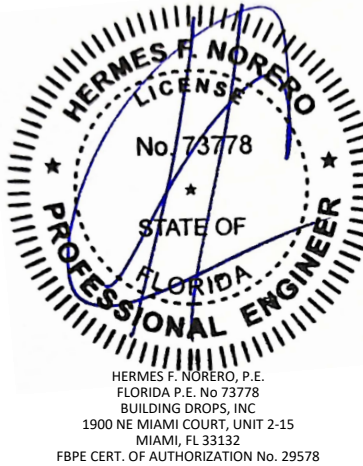
SCALE: **NTS**

DWG. #: **LBD004**

SHEET:  
**2**

REMARKS	BY	DATE

THE INSTALLATION DETAILS DESCRIBED HEREIN ARE GENERIC AND MAY NOT REFLECT ACTUAL CONDITIONS FOR A SPECIFIC SITE. IF SITE CONDITIONS CAUSE INSTALLATION TO DEVIATE FROM THE REQUIREMENTS DETAILED HEREIN, A LICENSED ENGINEER OR ARCHITECT SHALL PREPARE SITE SPECIFIC DOCUMENTS FOR USE WITH THIS DOCUMENT.



FL #:  
**FL41842**

DATE: **05.20.24**

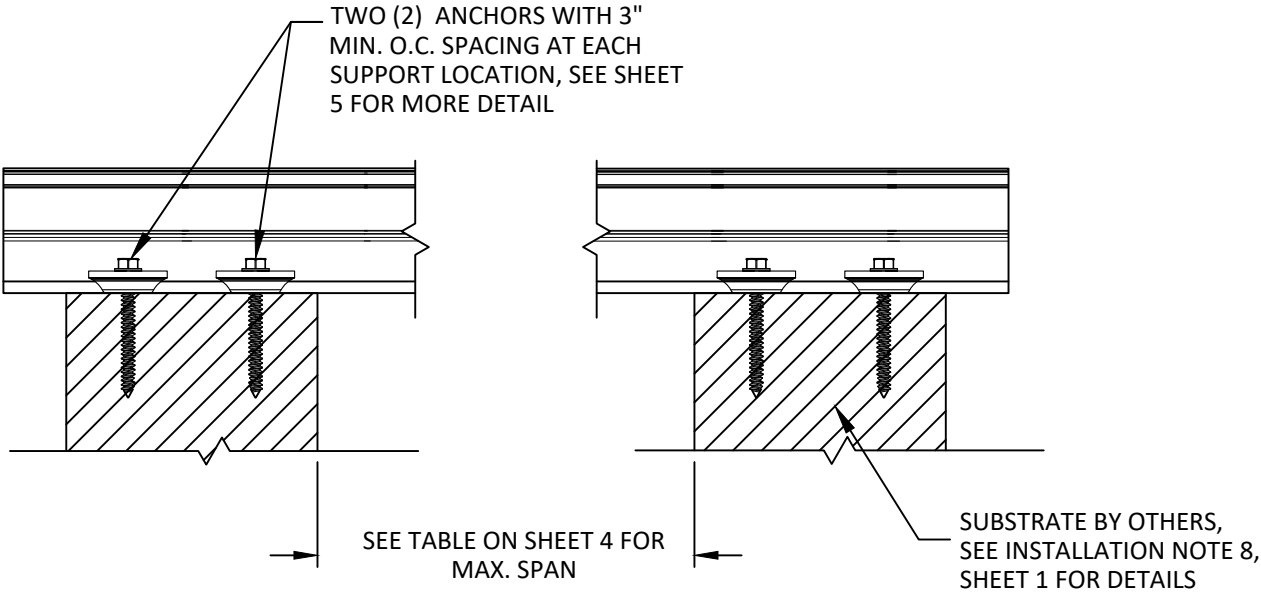
DWG. BY:  
**FB**

CHK. BY:  
**HFN**

SCALE: **NTS**

DWG. #: **LBD004**

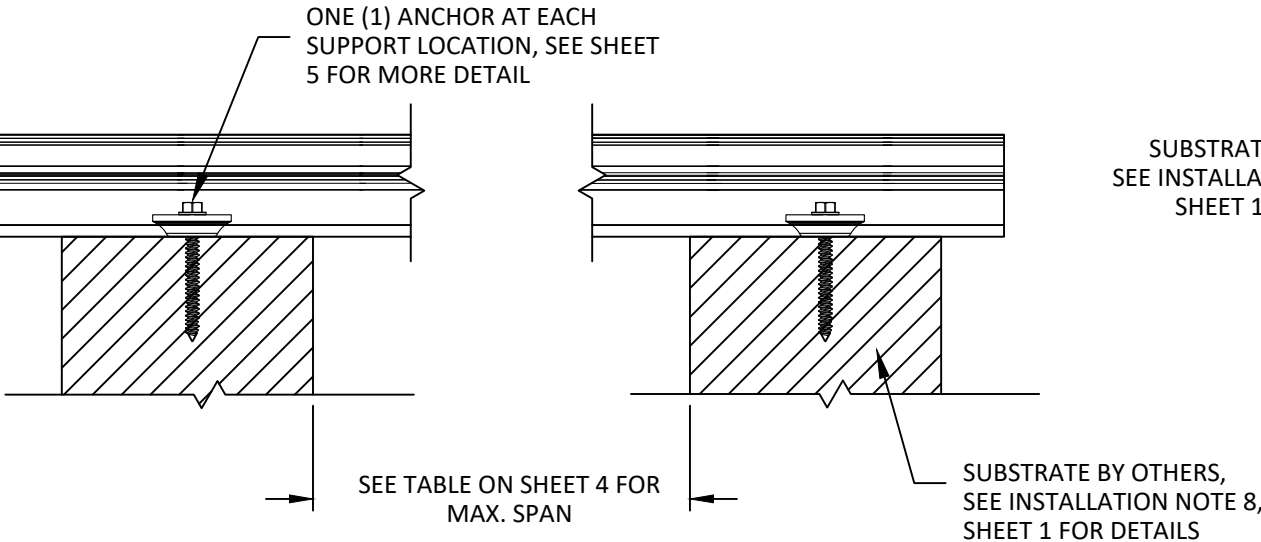
SHEET:  
**3**



A

3

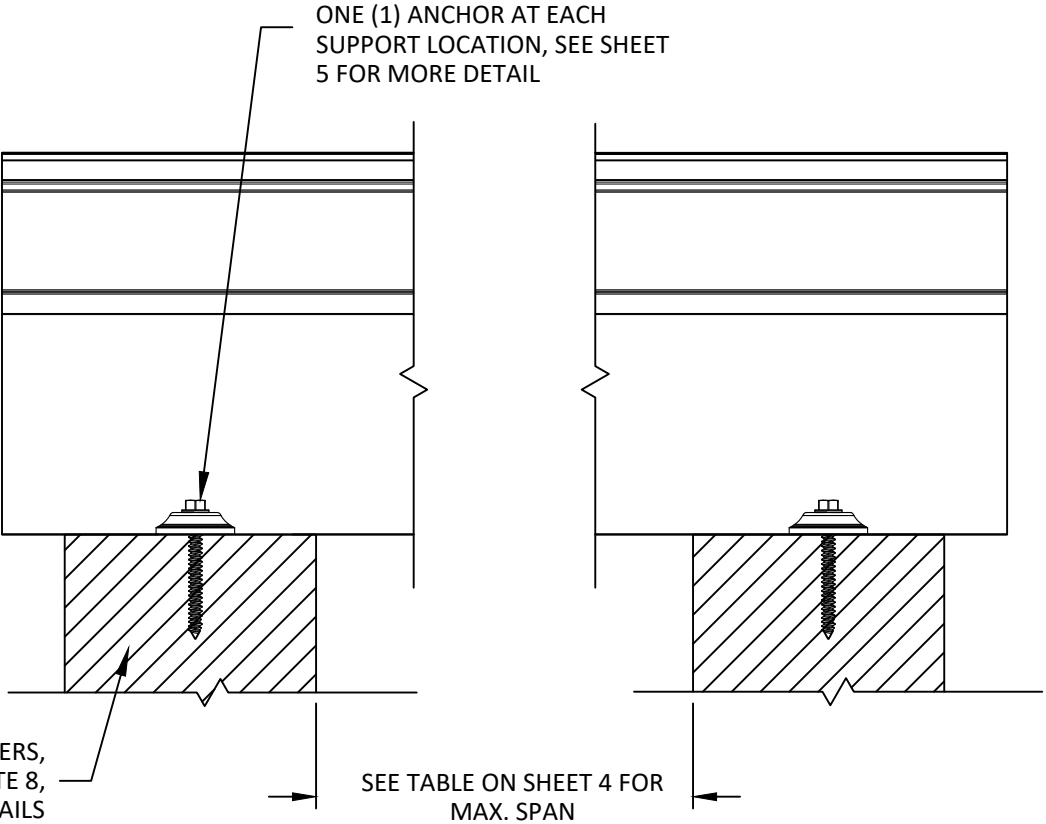
HORIZONTAL SECTION  
6" & 8" BATTEN INSTALLATION



B

3

HORIZONTAL SECTION  
4" BATTEN INSTALLATION



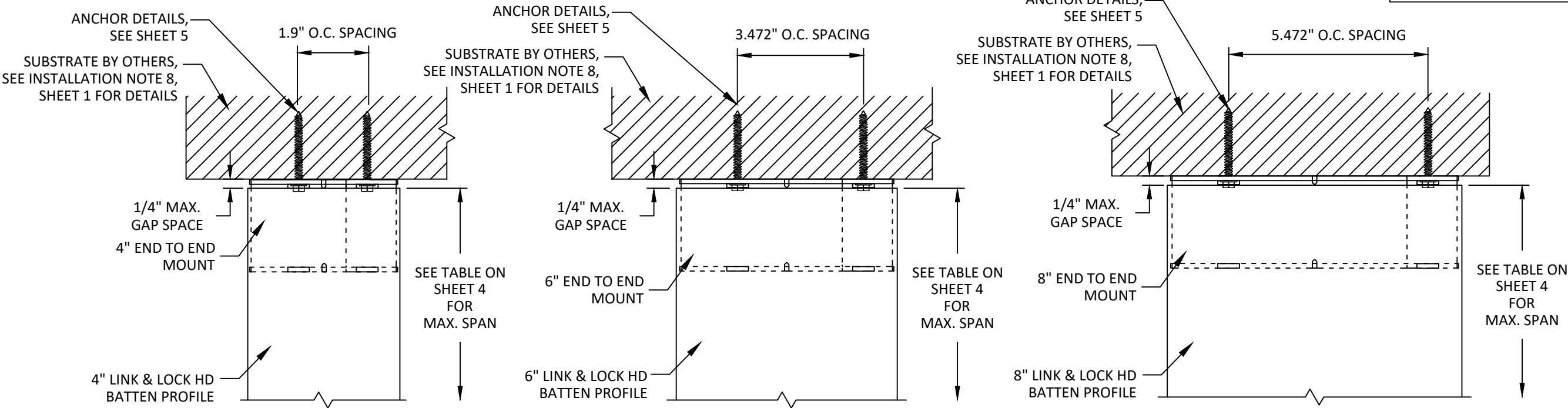
C

3

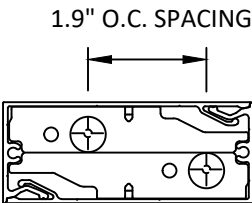
HORIZONTAL SECTION  
FIN INSTALLATION (ALL PROFILES)

END TO END INSTALLATION

NOTE: TOP END MOUNT  
INSTALLATION SHOW,  
BOTTOM END INSTALLATION  
IS SIMILAR.

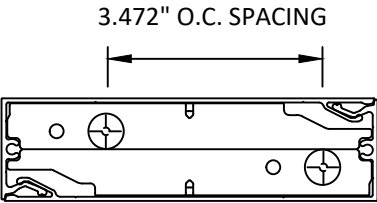


VERTICAL SECTION  
4" PROFILE - END TO END MOUNT  
TOP END INSTALLATION



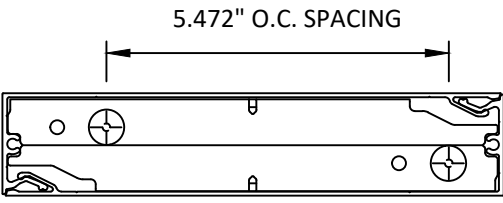
CROSS SECTION  
4" END TO END MOUNT

VERTICAL SECTION  
6" PROFILE - END TO END MOUNT  
TOP END INSTALLATION



CROSS SECTION  
6" END TO END MOUNT

VERTICAL SECTION  
8" PROFILE - END TO END MOUNT  
TOP END INSTALLATION



CROSS SECTION  
8" END TO END MOUNT

LINK & LOCK BATTEN MAX. ALLOWABLE SPAN (FT)				
ULTIMATE LOAD (PSF)	ALLOWABLE LOAD (PSF)	MAX. ALLOWABLE SPAN (FT)		
		4" LINK & LOCK HD	6" LINK & LOCK HD	8" LINK & LOCK HD
33	20	12	12	12
67	40	12	10	8
100	60	10	7	5
133	80	8	5	4
167	100	6	4	3
200	120	5	3	3
233	140	4	3	2
267	160	2	2	2

NOTE: SPANS SHOWN WITHIN TABLE  
ARE TO BE APPLIED TO ALL BATTEN  
SYSTEMS WITHIN REPORT.



LONGBOARD ARCHITECTURAL PRODUCTS  
1777 CLEARBROOK RD #120  
ABBOTSFORD, BC V2T 5X5, CANADA  
PH: (800) 604-0343

TITLE:  
LINK & LOCK HD BATTEN SYSTEM  
(HVHZ)  
END TO END INSTALLATION &  
DESIGN PRESSURE TABLES

PREPARED BY:  
BUILDING DROPS, INC.  
1900 NE MIAMI CT UNIT 2-15  
MIAMI, FL 33132  
PH: (954)399-8478  
FAX: (954)744-4738  
WEB: www.buildingdrops.com

BUILDING DROPS

REMARKS	BY	DATE

THE INSTALLATION DETAILS DESCRIBED HEREIN ARE GENERIC  
AND MAY NOT REFLECT ACTUAL CONDITIONS FOR A SPECIFIC  
SITE. IF SITE CONDITIONS CAUSE INSTALLATION TO DEVIATE  
FROM THE REQUIREMENTS DETAILED HEREIN, A LICENSED  
ENGINEER OR ARCHITECT SHALL PREPARE SITE SPECIFIC  
DOCUMENTS FOR USE WITH THIS DOCUMENT.

HERMES F. NORERO, P.E.  
FLORIDA P.E. No. 73778  
BUILDING DROPS, INC  
1900 NE MIAMI COURT, UNIT 2-15  
MIAMI, FL 33132  
FBPE CERT. OF AUTHORIZATION No. 29578

FL #:  
**FL41842**

DATE:  
**05.20.24**

DWG. BY:  
**FB**

CHK. BY:  
**HFN**

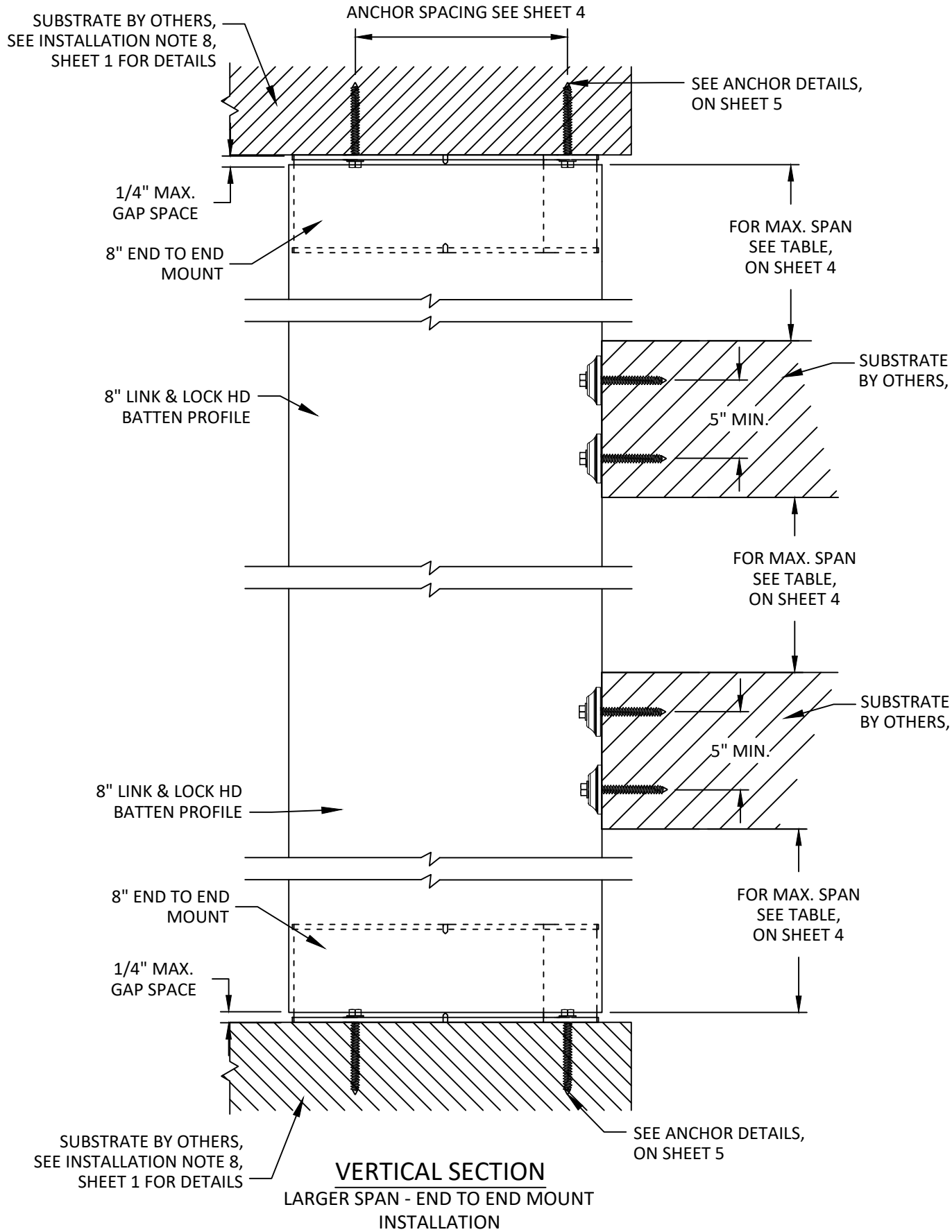
SCALE:  
**NTS**

DWG. #:  
**LBD004**

SHEET:  
**4**



# LARGER SPAN - END TO END INSTALLATION



NOTE: 8"PROFILE SHOWN, ALL PROFILE OPTIONS QUALIFIED

ANCHOR SCHEDULE			
ANCHOR DESCRIPTION	SUBSTRATE	MIN. EMBEDMENT	MIN. EDGE DISTANCE
#12 WOOD SCREW	MIN. S.G. = 0.55 WOOD	1-1/2"	1"
#12 SELF-DRILLING OR SELF-TAPPING SCREW (GRADE 5)	STEEL: MIN. 18 GA., MIN. Fy=33 KSI ALUM.: MIN. 1/8", MIN. 6063-T5	3 THREADS PENETRATION PAST METAL STRUCTURE	1/2"
3/16" ITW TAPCON	CONCRETE MIN. F'C = 3000 PSI	1-1/2"	1-3/4"
	HOLLOW / GROUT-FILLED BLOCK PER C-90 MIN. F'C = 2000 PSI	1"	2"



LONGBOARD ARCHITECTURAL PRODUCTS  
1777 CLEARBROOK RD #120  
ABBOTSFORD, BC V2T 5X5, CANADA  
PH: (800) 604-0343

TITLE:  
LINK & LOCK HD BATTEN SYSTEM  
(HVHZ)  
LARGER SPAN- END TO END  
INSTALLATION &  
ANCHOR SCHEDULE

PREPARED BY:  
BUILDING DROPS, INC.  
1900 NE MIAMI CT UNIT 2-15  
MIAMI, FL 33132  
PH: (954)399-8478  
FAX: (954)744-4738  
WEB: www.buildingdrops.com

BUILDING DROPS

REMARKS	BY	DATE

THE INSTALLATION DETAILS DESCRIBED HEREIN ARE GENERIC AND MAY NOT REFLECT ACTUAL CONDITIONS FOR A SPECIFIC SITE. IF SITE CONDITIONS CAUSE INSTALLATION TO DEVIATE FROM THE REQUIREMENTS DETAILED HEREIN, A LICENSED ENGINEER OR ARCHITECT SHALL PREPARE SITE SPECIFIC DOCUMENTS FOR USE WITH THIS DOCUMENT.

HERMES F. NORERO, P.E.  
FLORIDA P.E. No. 73778  
BUILDING DROPS, INC.  
1900 NE MIAMI COURT, UNIT 2-15  
MIAMI, FL 33132  
FBPE CERT. OF AUTHORIZATION No. 29578

FL #:  
**FL41842**

DATE:  
**05.20.24**

DWG. BY:  
**FB**

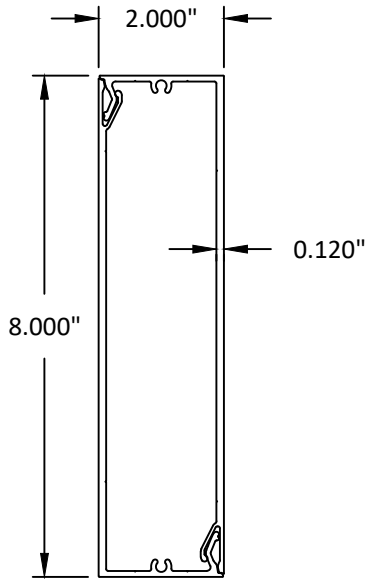
CHK. BY:  
**HFN**

SCALE:  
**NTS**

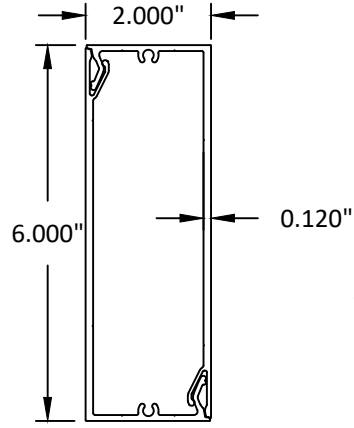
DWG. #:  
**LBD004**

SHEET:  
**5**

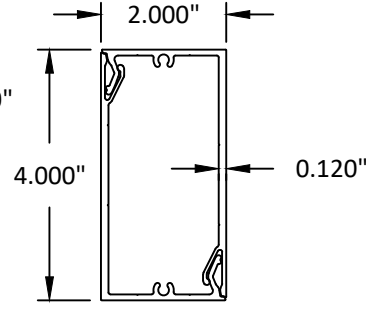
LINK & LOCK HD - BILL OF MATERIALS			
NO.	PART NO.	DESCRIPTION	REMARKS
1	-	8" HD PROFILE	ALUMINUM 6063-T5
2	-	6" HD PROFILE	ALUMINUM 6063-T5
3	-	4" HD PROFILE	ALUMINUM 6063-T5
4	-	6" PROFILE END MOUNT	ALUMINUM 6063-T5
5	-	8" PROFILE END MOUNT	ALUMINUM 6063-T5
6	-	MOUNTING CLIP	PA6 33% GLASS REINFORCED
7	-	4" PROFILE END MOUNT	ALUMINUM 6063-T5



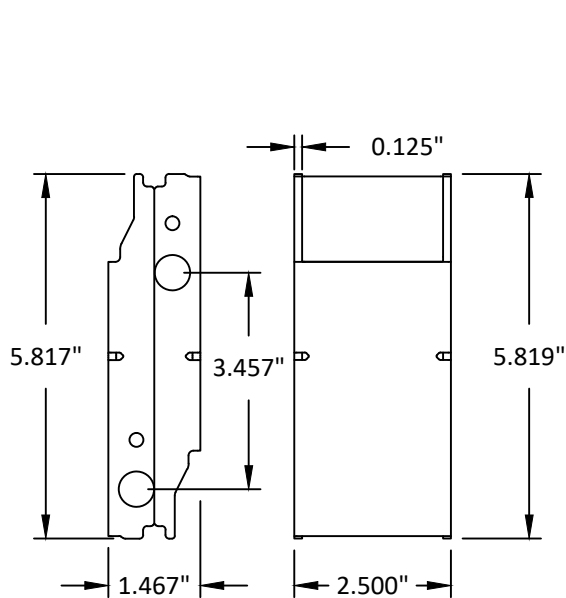
1 8" HD PROFILE  
6063-T5



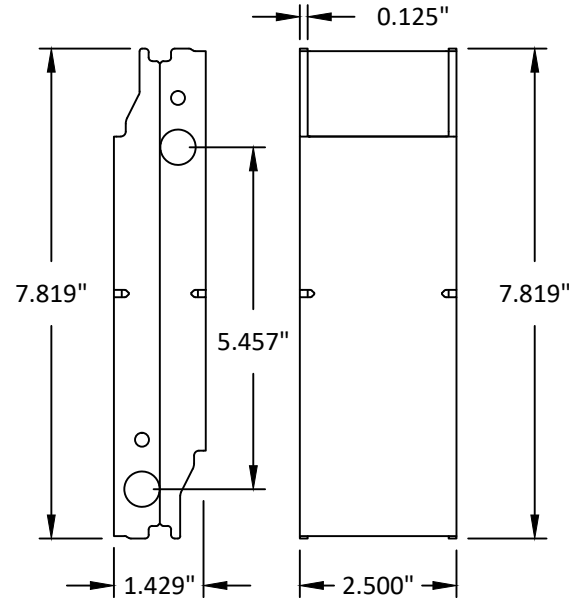
2 6" HD PROFILE  
6063-T5



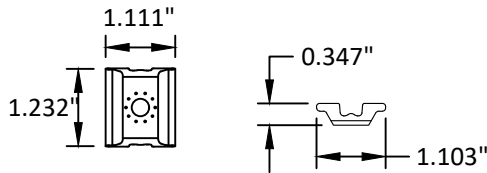
3 4" HD PROFILE  
6063-T5



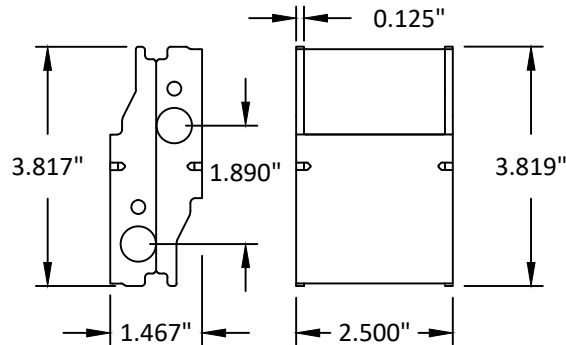
4 6" PROFILE END MOUNT  
6063-T5



5 8" PROFILE END MOUNT  
6063-T5



6 MOUNTING CLIP  
6063-T5



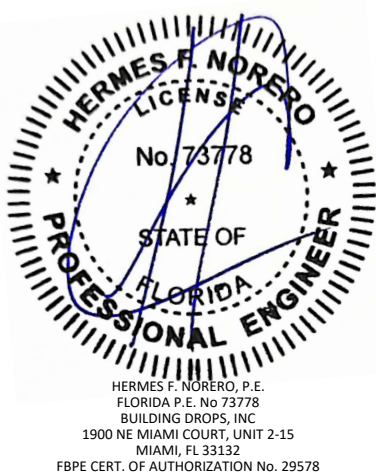
7 4" PROFILE END MOUNT  
6063-T5

TITLE:  
LINK & LOCK HD BATTEN SYSTEM  
(HVHZ)  
COMPONENTS & BILL OF MATERIALS

PREPARED BY:  
**B.D.**  
BUILDING DROPS  
BUILDING DROPS, INC.  
1900 NE MIAMI CT UNIT 2-15  
MIAMI, FL 33132  
PH: (954)399-8478  
FAX: (954)744-4738  
WEB: www.buildingdrops.com

REMARKS	BY	DATE

THE INSTALLATION DETAILS DESCRIBED HEREIN ARE GENERIC AND MAY NOT REFLECT ACTUAL CONDITIONS FOR A SPECIFIC SITE. IF SITE CONDITIONS CAUSE INSTALLATION TO DEVIATE FROM THE REQUIREMENTS DETAILED HEREIN, A LICENSED ENGINEER OR ARCHITECT SHALL PREPARE SITE SPECIFIC DOCUMENTS FOR USE WITH THIS DOCUMENT.



FL #: **FL41842**

DATE: **05.20.24**

DWG. BY: **FB**      CHK. BY: **HFN**

SCALE: **NTS**

DWG. #: **LBD004**

SHEET: **6**