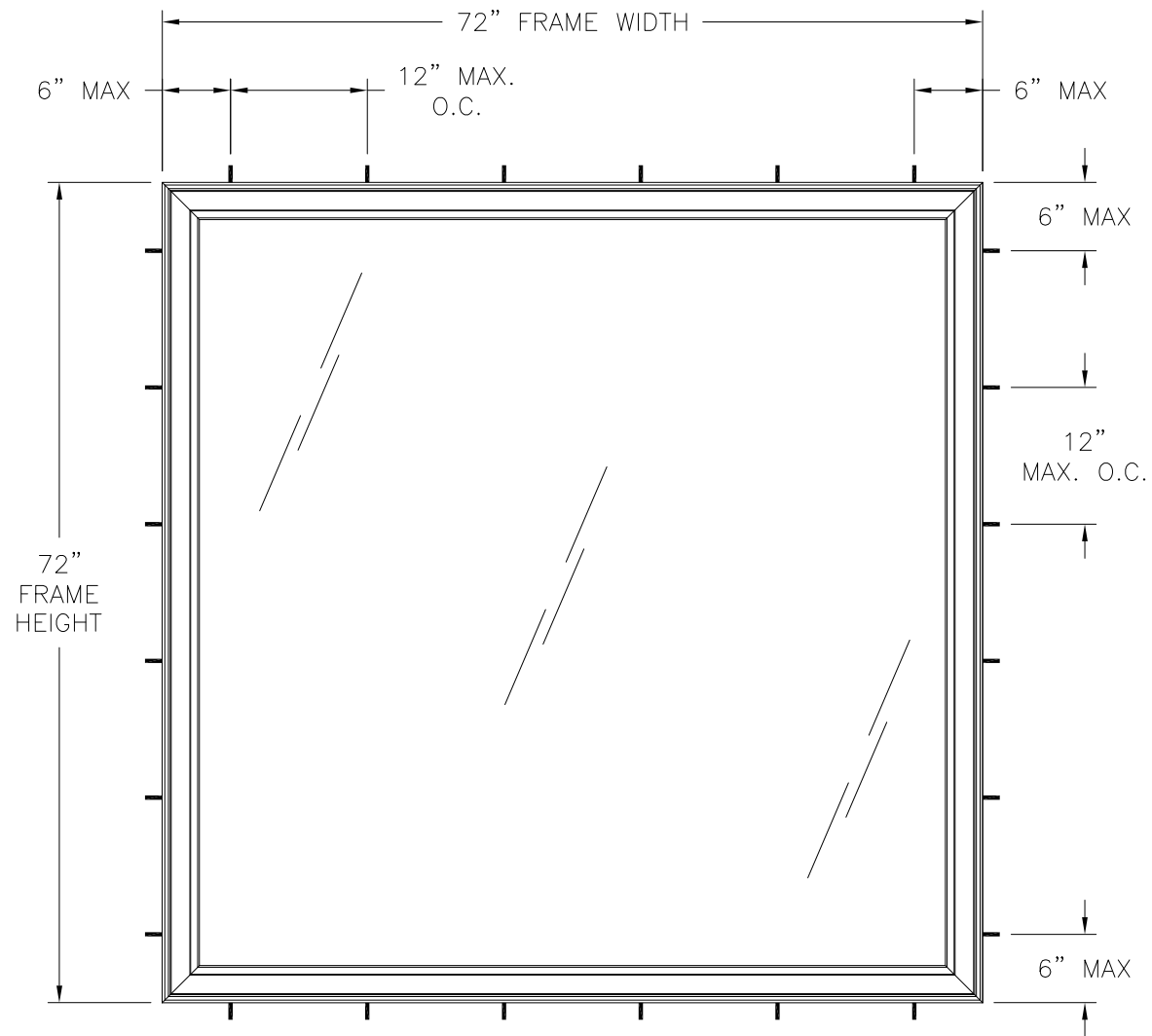


REVISIONS			
REV	DESCRIPTION	DATE	APPROVED



**PE9301W PVC FIXED WINDOW**  
EXTERIOR VIEW

DESIGN PRESSURE RATING	IMPACT RATING
±80.0PSF	LARGE & SMALL MISSILE IMPACT

MISSILE LEVEL D, WIND ZONE 3

**NOTES:**

1. THE PRODUCT SHOWN HEREIN IS DESIGNED AND MANUFACTURED TO COMPLY WITH REQUIREMENTS OF THE FLORIDA BUILDING CODE.
2. WOOD FRAMING AND MASONRY OPENING TO BE DESIGNED AND ANCHORED TO PROPERLY TRANSFER ALL LOADS TO STRUCTURE. FRAMING AND MASONRY OPENING IS THE RESPONSIBILITY OF THE ARCHITECT OR ENGINEER OF RECORD.
3. WHERE 1X BUCK IS NOT USED DISSIMILAR MATERIALS MUST BE SEPARATED WITH APPROVED COATING OR MEMBRANE. SELECTION OF COATING OR MEMBRANE IS THE RESPONSIBILITY OF THE ARCHITECT OR ENGINEER OF RECORD.
4. BUCKS SHALL EXTEND BEYOND UNIT FRAME INTERIOR FACE SO THAT FULL FRAME SUPPORT IS PROVIDED AND MUST BE PROPERLY ANCHORED TO STRUCTURE.
5. ALLOWABLE STRESS INCREASE OF 1/3 WAS NOT USED IN THE DESIGN OF THE PRODUCT SHOWN HEREIN. WIND LOAD DURATION FACTOR Cd=1.6 WAS USED FOR WOOD ANCHOR CALCULATIONS.
6. FRAME MATERIAL: EXTRUDED RIGID PVC.
7. UNITS MUST BE GLAZED PER ASTM E1300, SEE GLASS DETAIL IN SHEET 4.
8. APPROVED IMPACT PROTECTIVE SYSTEM IS NOT REQUIRED FOR THIS PRODUCT IN WIND BORNE DEBRIS REGIONS UP TO WIND ZONE 3.
9. SHIM AS REQUIRED AT EACH INSTALLATION ANCHOR WITH LOAD BEARING SHIM. SHIM WHERE SPACE OF 1/16" OR GREATER OCCURS. MAXIMUM ALLOWABLE SHIM STACK TO BE 1/4".
10. FOR ANCHORING INTO MASONRY/CONCRETE USE 3/16" TAPCONS WITH SUFFICIENT LENGTH TO ACHIEVE A 1 1/4" MINIMUM EMBEDMENT INTO SUBSTRATE WITH 2 1/2" MINIMUM EDGE DISTANCE. LOCATE ANCHORS AS SHOWN IN ELEVATIONS AND INSTALLATION DETAILS.
11. FOR ANCHORING INTO WOOD FRAMING OR 2X BUCK USE #10 WOOD SCREWS WITH SUFFICIENT LENGTH TO ACHIEVE A 1 3/8" MINIMUM EMBEDMENT INTO SUBSTRATE. LOCATE ANCHORS AS SHOWN IN ELEVATIONS AND INSTALLATION DETAILS.
12. FOR ANCHORING INTO METAL STRUCTURE USE #10 SMS OR SELF DRILLING SCREWS WITH SUFFICIENT LENGTH TO ACHIEVE 3 THREADS MINIMUM BEYOND STRUCTURE INTERIOR WALL. LOCATE ANCHORS AS SHOWN IN ELEVATIONS AND INSTALLATION DETAILS.
13. ALL FASTENERS TO BE CORROSION RESISTANT.
14. ANCHORS SHALL BE INSTALLED IN ACCORDANCE WITH ANCHOR MANUFACTURER'S INSTALLATION INSTRUCTIONS, AND ANCHORS SHALL NOT BE USED IN SUBSTRATES WITH STRENGTHS LESS THAN THE MINIMUM STRENGTH SPECIFIED BELOW:
  - 14.1. WOOD – MINIMUM SPECIFIC GRAVITY OF G=0.42
  - 14.2. CONCRETE – MINIMUM COMPRESSIVE STRENGTH OF 3,192 PSI.
  - 14.3. MASONRY, GROUT FILLED – STRENGTH CONFORMANCE TO ASTM C-90, GRADE N, TYPE 1 (OR GREATER).
  - 14.4. METAL STRUCTURE: STEEL 18GA, 33KSI OR ALUMINUM 6063-T5 1/8" THICK MINIMUM

SIGNED: 01/24/2023

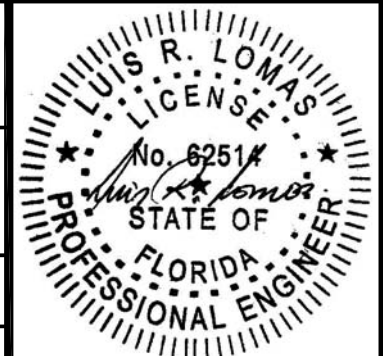
**STERGIS WINDOW & DOORS**

79 WALTON STREET  
ATTLEBORO, MA 02703

PE9301W PVC FIXED WINDOW  
LMI & SMI  
ELEVATION AND NOTES

DRAWN: R.L.	DWG NO. 08-03876	REV -
SCALE NTS	DATE 01/24/23	SHEET 1 OF 4

L. ROBERTO LOMAS P.E.  
400 S. PALM AVE, INDIALANTIC, FL 32903  
434-688-0609 rllomas@rlomaspe.com

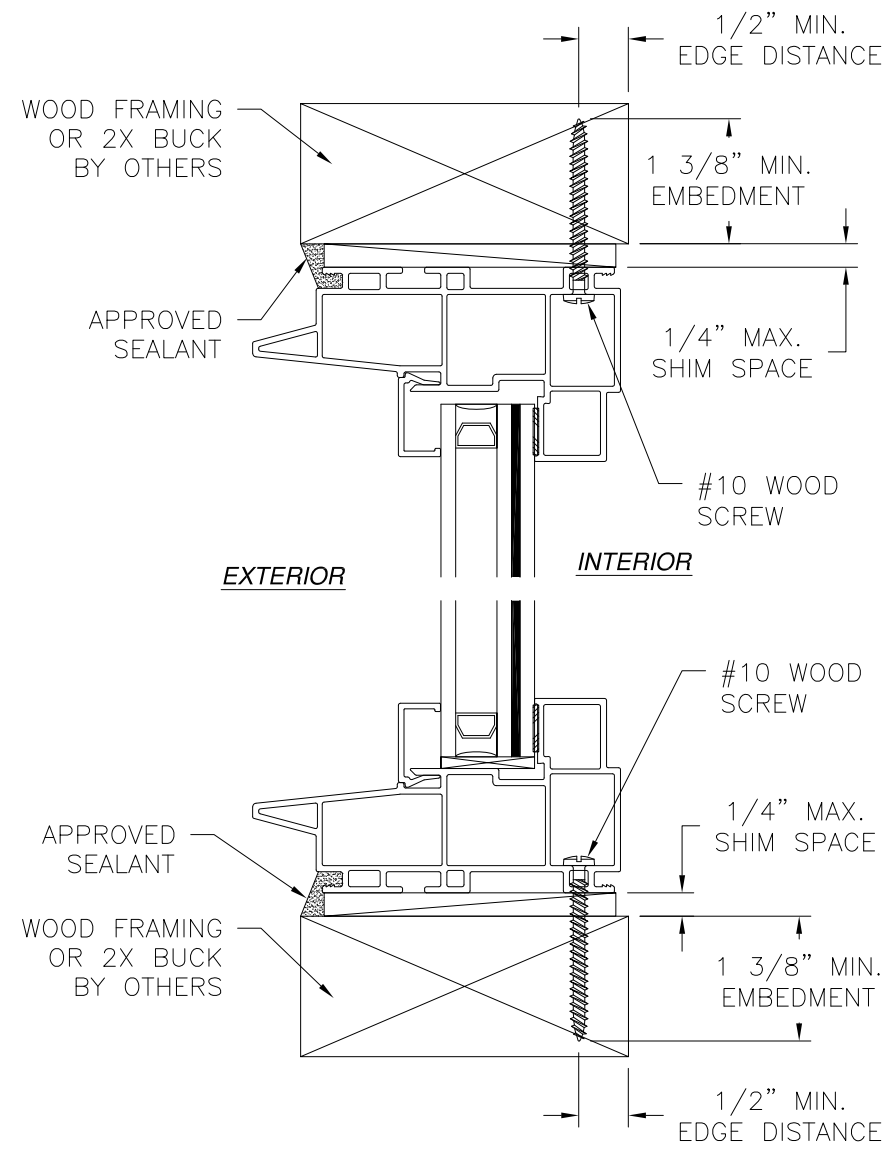


Luis R. Lomas P.E.  
FL No.: 62514

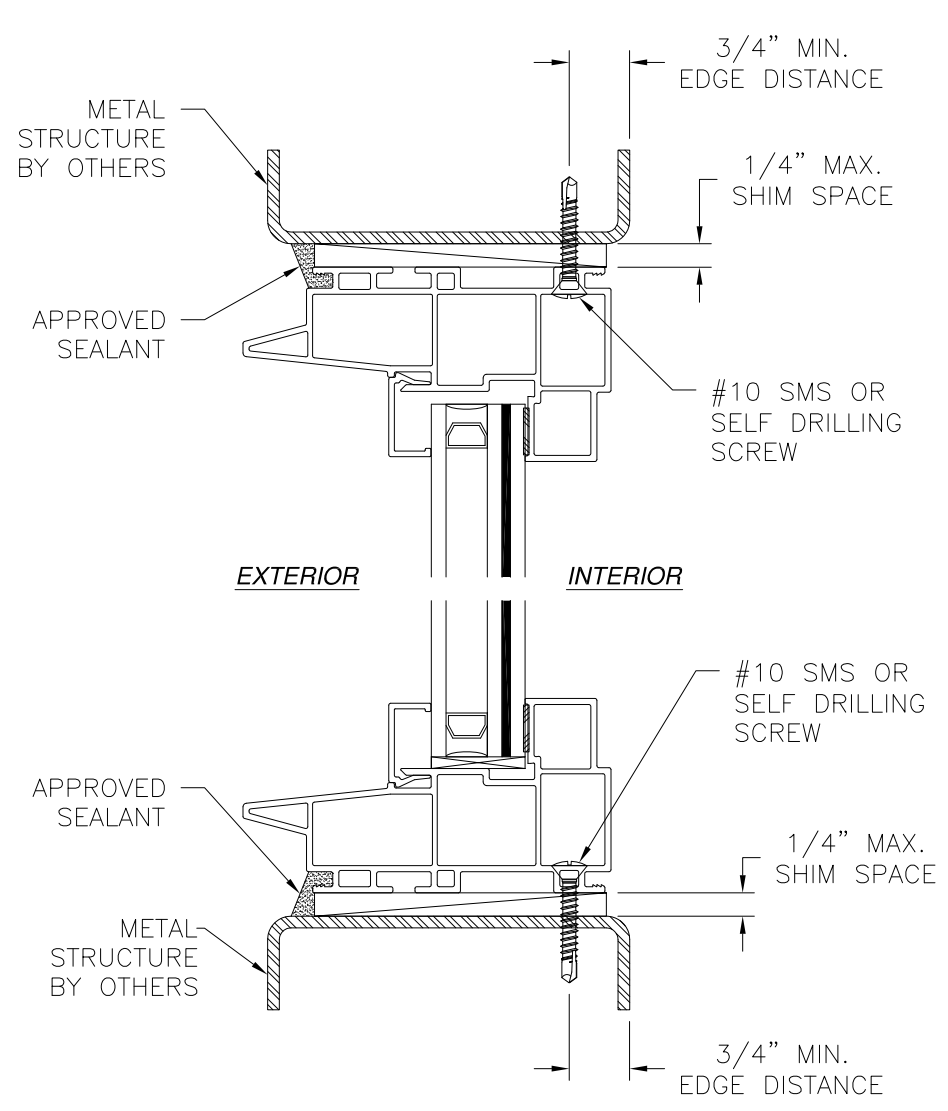
TABLE OF CONTENTS

SHEET NO.	DESCRIPTION
1	ELEVATION, ANCHORING AND NOTES
2 - 3	INSTALLATION DETAILS AND COMPONENTS
4	COMPONENTS AND GLAZING DETAIL

REVISIONS			
REV	DESCRIPTION	DATE	APPROVED



**VERTICAL CROSS SECTION**  
WOOD FRAMING OR 2X BUCK INSTALLATION  
HEAD AND SILL SHOWN JAMBS SIMILAR



**VERTICAL CROSS SECTION**  
METAL STRUCTURE INSTALLATION  
HEAD AND SILL SHOWN JAMBS SIMILAR

NOTES:  
1. INTERIOR AND EXTERIOR FINISHES, BY OTHERS, NOT SHOWN FOR CLARITY.  
2. PERIMETER AND JOINT SEALANT BY OTHERS TO BE DESIGNED IN ACCORDANCE WITH ASTM E2112

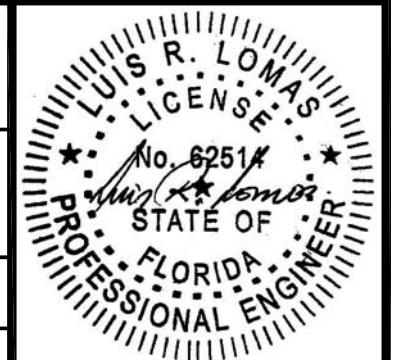
SIGNED: 01/24/2023

STERGIS WINDOW & DOORS  
79 WALTON STREET  
ATTLEBORO, MA 02703

PE9301W PVC FIXED WINDOW  
LMI & SMI  
INSTALLATION DETAILS

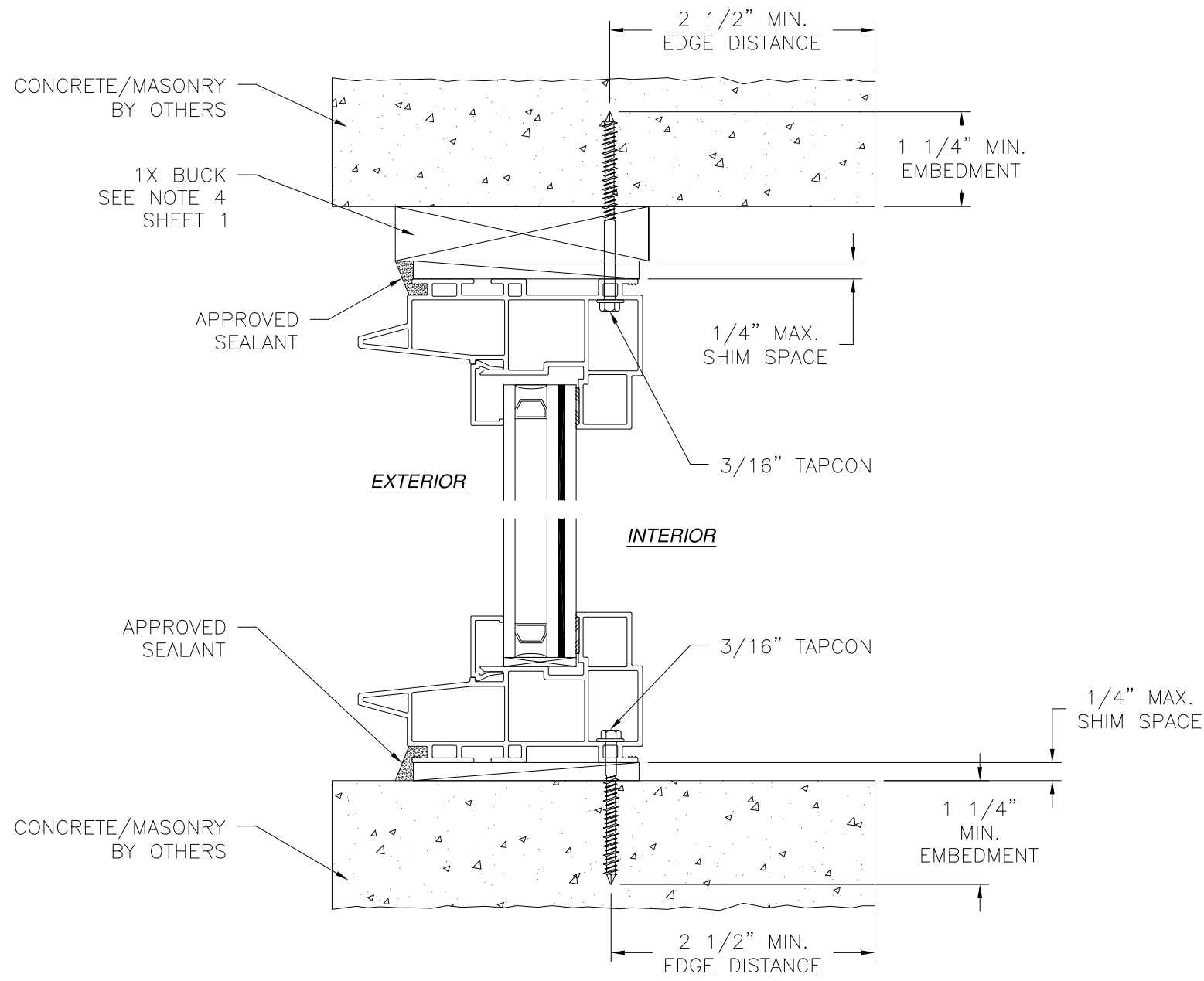
DRAWN: R.L.	DWG NO. 08-03876	REV -
SCALE NTS	DATE 01/24/23	SHEET 2 OF 4

L. ROBERTO LOMAS P.E.  
400 S. PALM AVE, INDIALANTIC, FL 32903  
434-688-0609 rllomas@rlomaspe.com



Luis R. Lomas P.E.  
FL No.: 62514

REVISIONS			
REV	DESCRIPTION	DATE	APPROVED

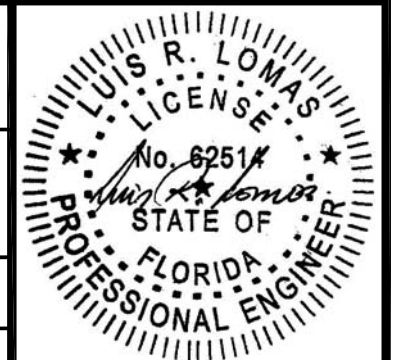


**VERTICAL CROSS SECTION**  
**CONCRETE/MASONRY INSTALLATION**  
 FOR 1X BUCK INSTALLATION SEE HEAD DETAIL  
 FOR INSTALLATION WITHOUT 1X BUCK REFER TO SILL DETAIL

- NOTES:**
1. INTERIOR AND EXTERIOR FINISHES, BY OTHERS, NOT SHOWN FOR CLARITY.
  2. PERIMETER AND JOINT SEALANT BY OTHERS TO BE DESIGNED IN ACCORDANCE WITH ASTM E2112

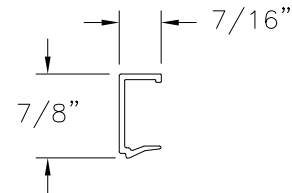
SIGNED: 01/24/2023

<b>STERGIS WINDOW &amp; DOORS</b> 79 WALTON STREET ATTLEBORO, MA 02703		
PE9301W PVC FIXED WINDOW LMI & SMI INSTALLATION DETAILS		
DRAWN: R.L.	DWG NO. 08-03876	REV -
SCALE NTS	DATE 01/24/23	SHEET 3 OF 4
L. ROBERTO LOMAS P.E. 400 S. PALM AVE, INDIALANTIC, FL 32903 434-688-0609 rllomas@rlomaspe.com		

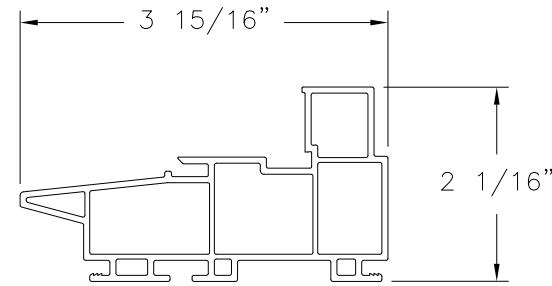


Luis R. Lomas P.E.  
 FL No.: 62514

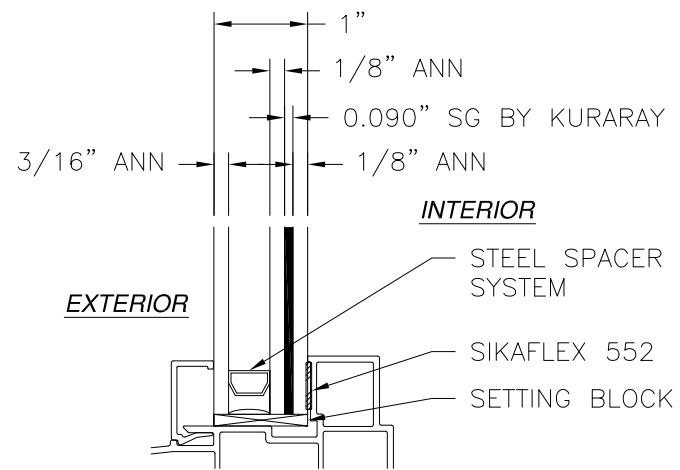
REVISIONS			
REV	DESCRIPTION	DATE	APPROVED



**3/4" GLAZING BEAD (BV137)**  
RIGID PVC .059" THICK



**PICTURE FRAME (PE9301)**  
RIGID PVC .065" THICK



**GLAZING DETAIL**

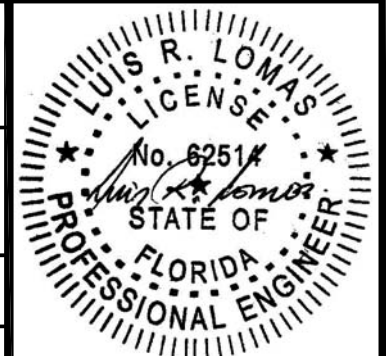
SIGNED: 01/24/2023

STERGIS WINDOW & DOORS  
79 WALTON STREET  
ATTLEBORO, MA 02703

PE9301W PVC FIXED WINDOW  
LMI & SMI  
COMPONENTS AND GLAZING DETAIL

DRAWN: R.L.	DWG NO. 08-03876	REV -
SCALE NTS	DATE 01/24/23	SHEET 4 OF 4

L. ROBERTO LOMAS P.E.  
400 S. PALM AVE, INDIALANTIC, FL 32903  
434-688-0609 rllomas@rlomaspe.com



Luis R. Lomas P.E.  
FL No.: 62514