

GENERAL NOTES:

1. ALL FASTENERS SHALL BE IN ACCORDANCE WITH THESE DRAWINGS. SPECIFIED ANCHOR EMBED TO BASE MATERIAL SHALL BE BEYOND WALL FINISH OR STUCCO.
 2. OPENINGS, BUCKING & BUCKING FASTENERS MUST BE PROPERLY DESIGNED & INSTALLED TO TRANSFER WIND LOADS TO THE STRUCTURE.
 3. THESE NON-IMPACT RATED PRODUCT INSTALLATIONS ARE IN ACCORDANCE WITH AND MEET THE REQUIREMENTS OF THE FLORIDA BUILDING CODE (FBC).
 4. ALL ANCHORS SECURING PRODUCT FRAMES TO PRESSURE TREATED BUCKS OR WOOD FRAMING SHALL BE CAPABLE OF RESISTING CORROSION CAUSED BY THE PRESSURE TREATING CHEMICALS IN THE WOOD.
 5. MATERIALS, INCLUDING BUT NOT LIMITED TO STEEL SCREWS, THAT COME INTO CONTACT WITH OTHER DISSIMILAR MATERIALS SHALL MEET THE REQUIREMENTS OF FLORIDA BUILDING CODE CHAPTER 20.
 6. TO THE BEST OF OUR KNOWLEDGE, THE PRODUCT SHOWN HEREIN IS CERTIFIED & QUALITY ASSURED BY A FLORIDA STATE APPROVED CERTIFICATION/OA ENTITY & SHALL BE LABELED IN ACCORDANCE WITH THE FBC AND THE FLORIDA DEPARTMENT OF BUSINESS & PROFESSIONAL REGULATION SPECIFICATIONS. PRODUCT ASSEMBLY IS NOT PART OF THIS DRAWING AND SHALL BE IN ACCORDANCE WITH THE MANUFACTURER'S QUALITY ASSURANCE SPECIFICATIONS & TESTING REPORTS.
 7. CERTIFICATION OF THESE PRODUCT INSTALLATIONS SHALL BE CONSIDERED VOID IF ANY OF THE FOLLOWING APPLY:
1) PRODUCT IS INSTALLED WITHOUT A BUILDING PERMIT FROM THE APPLICABLE LOCAL BUILDING DEPARTMENT. 2) PRODUCT IS INSTALLED BY ANYONE OTHER THAN A LICENSED CONTRACTOR EXPERIENCED WITH INSTALLATIONS OF THIS TYPE OF PRODUCT. 3) IF CHANGES HAVE OCCURRED TO THE PRODUCT'S CERTIFICATION ENTITY'S CERTIFICATE THAT CAUSE THESE INSTALLATIONS TO BE INCORRECT OR INCONSISTENT WITH WHAT HAS BEEN TESTED.
 8. THE LEAST DESIGN PRESSURE SPECIFIED EITHER IN THIS DRAWING OR IN THE PRODUCTS CERTIFICATION SHALL CONTROL FOR THE INSTALLED PRODUCT.
 9. THESE DRAWINGS CERTIFY THE PRODUCT INSTALLATION ONLY. WATER PROOFING OF THE INSTALLED PRODUCT IS NOT PART OF THIS INSTALLATION CERTIFICATION. THAT RESPONSIBILITY SHALL BE THAT OF THE MANUFACTURER &/OR INSTALLER.
- INSTALLATION EVALUATION IS BASED ON APPLICABLE ANCHOR STANDARDS AND/OR INFORMATION & RESULTS FROM APPLICABLE TEST REPORTS. THE FLORIDA BUILDING CODE VERSION CONSIDERED WITH THE EVALUATION WAS THAT IN FORCE AT THE TIME OF THE EVALUATION. IN THE EVENT OF CODE VERSION CHANGES/UPDATES OR IN THE EVENT THAT NEW OR ADDITIONAL TESTING IS COMPLETED ON THE REFERENCED PRODUCT, PRIOR TO STATING CODE COMPLIANCE WITH THE STATE, THE MANUFACTURER SHALL CONFIRM WITH THE INSTALLATION EVALUATION ENGINEER OF RECORD THAT THE INSTALLATIONS SPECIFIED HERE-IN ARE CURRENT WITH THE THEN CURRENT TESTING, CODE AND APPLICABLE STANDARDS.

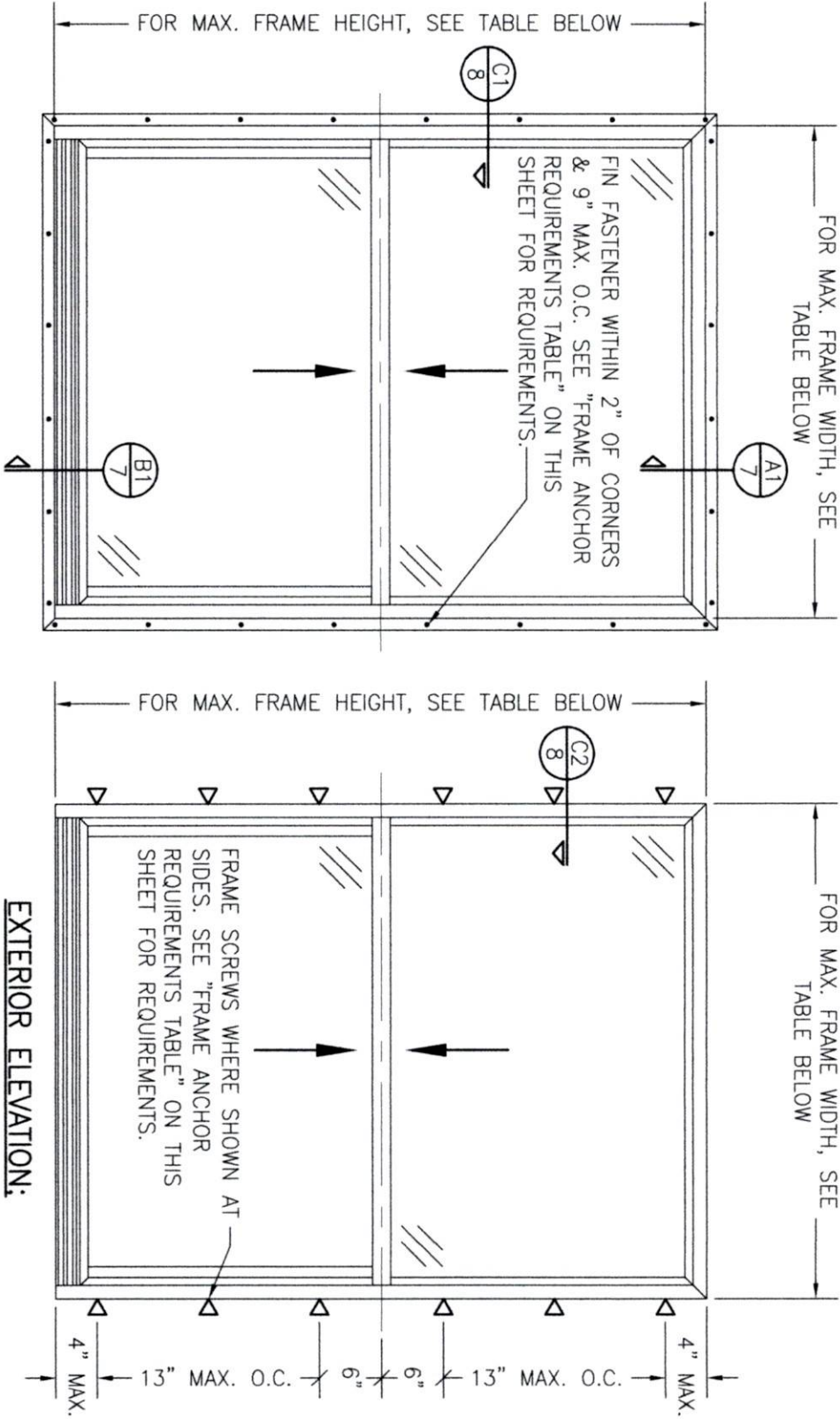
INSTALLATION NOTE:

WHEN NECESSARY, INSTALLATION METHODS MAY BE MIXED WITH ANY ONE WINDOW SUCH THAT INDIVIDUAL SIDES OF THE WINDOW MAY USE ONE OR THE OTHER ANCHOR METHOD (EXAMPLE: HEAD MAY USE FRAME SCREWS METHOD WHILE OTHER SIDES USE FIN)

FRAME ANCHOR REQUIREMENTS TABLE

OPENING TYPE (SUBSTRATE)	FRAME/CLIP/NAIL FIN TO OPENING FASTENER TYPE	MINIMUM EMBED	MINIMUM EDGE DIST.
(1) FRAME SCREWS			
MIN. 2X4 WOOD FRAME OR BUCK (MIN. GR. 3 & G=0.55)	NO. 10 SMS OR WOOD SCREW	1 1/4"	3/4"
MIN. 18 GA. 33 KSI METAL STUD	NO. 10 GR. 5 SELF TAP/DRILL SCREW	FULL	1/2"
MIN. 1/8" THK A36 STEEL	NO. 10 GR. 5 SELF TAP/DRILL SCREW	FULL	1/2"
MIN. 1/8" THK 6063-T5 ALUM.	NO. 10 GR. 5 SELF TAP/DRILL SCREW	FULL	1/2"
MIN. C-90 CMU OR 2500 PSI CONCRETE	(2) 1/4" CONCRETE SCREW	1 1/4"	2"
(1) INSTALLATION CLIP SCREWS			
MIN. 2X4 WOOD FRAME OR BUCK (MIN. GR. 3 & G=0.55)	NO. 10 SMS SCREW	1 1/4"	1/2"
MIN. 18 GA. 33 KSI METAL STUD	NO. 10 GR. 5 SELF TAP/DRILL SCREW	FULL	1/2"
MIN. 1/8" THK A36 STEEL	NO. 10 GR. 5 SELF TAP/DRILL SCREW	FULL	1/2"
MIN. 1/8" THK 6063-T5 ALUM.	NO. 10 GR. 5 SELF TAP/DRILL SCREW	FULL	1/2"
2500 PSI CONCRETE	(2) 3/16" CONCRETE SCREW	1 1/4"	2"
(3) NAILING FIN FASTENERS			
MIN. 2X4 WOOD FRAME OR BUCK (MIN. GR. 3 & G=0.55)	NO. 10 SMS SCREW	1 3/8"	1/2"
MIN. 2X4 WOOD FRAME OR BUCK (MIN. GR. 3 & G=0.55)	11 GA. ROOFING NAIL	1 3/8"	1/2"
MIN. 1/8" THK A36 STEEL	NO. 8 GR. 5 SELF TAP/DRILL SCREW	FULL	1/2"
MIN. 1/8" THK 6063-T5 ALUM.	NO. 8 GR. 5 SELF TAP/DRILL SCREW	FULL	1/2"
(1) FRAME AND INSTALLATION CLIP SCREWS SHALL BE A PAN OR HEX HEAD SCREW.			
(2) CONCRETE SCREWS SHALL BE ELCO ULTRACONS (C.S.), ELCO CRETE-FLEX (S.S.), ITW RAMSET/RED HEAD TAPCONS (C.S. OR S.S.) OR HILTI KWIK-CON II (C.S OR S.S.).			
(3) WHEN SCREWS ARE USED WITH THE NAIL FIN, THEY MUST BE A PAN HEAD OR WAFFLE HEAD SCREW OR HAVE A FLAT WASHER AT THE SCREW HEAD.			

- (1) FRAME AND INSTALLATION CLIP SCREWS SHALL BE A PAN OR HEX HEAD SCREW.
- (2) CONCRETE SCREWS SHALL BE ELCO ULTRACONS (C.S.), ELCO CRETE-FLEX (S.S.), ITW RAMSET/RED HEAD TAPCONS (C.S. OR S.S.) OR HILTI KWIK-CON II (C.S OR S.S.).
- (3) WHEN SCREWS ARE USED WITH THE NAIL FIN, THEY MUST BE A PAN HEAD OR WAFFLE HEAD SCREW OR HAVE A FLAT WASHER AT THE SCREW HEAD.



EXTERIOR ELEVATION:
SINGLE WINDOW

SCALE: 3/4" = 1'-0"

(NAIL FIN MOUNT CONDITION)

EXTERIOR ELEVATION:
SINGLE WINDOW

SCALE: 3/4" = 1'-0"

(FRAME SCREW MOUNT CONDITION)

PRESSURES & CONDITIONS SHOWN IN THIS DRAWING ARE GOVERNED BY INSTALLATION REQUIREMENTS ONLY. THE GOVERNING CONDITIONS ON ANY SPECIFIC PRODUCT SHALL BE THE LESSER OF THOSE SPECIFIED IN THE PRODUCT'S STATE APPROVAL OR THAT SHOWN IN THESE DRAWINGS.

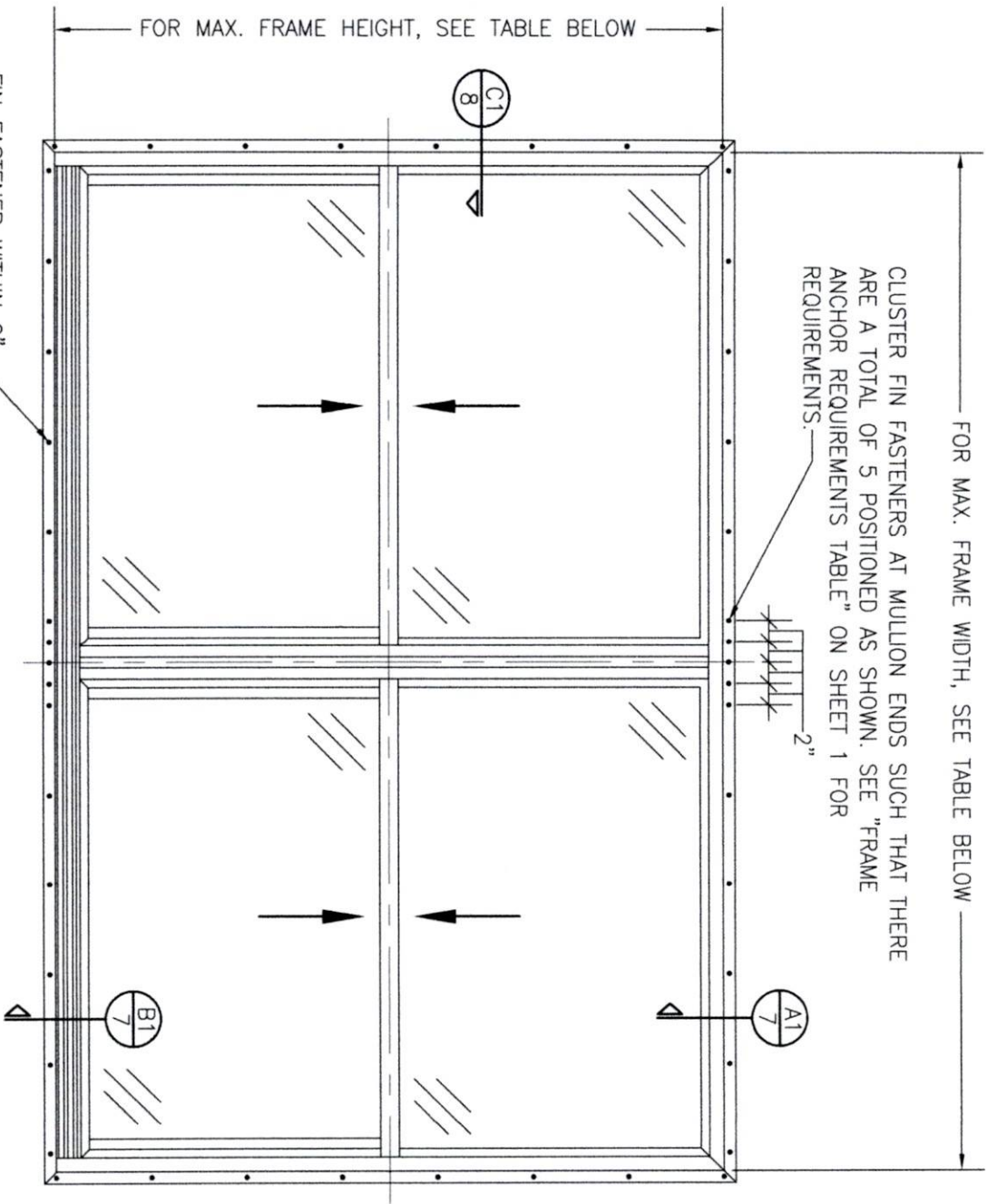
ALLOWABLE DESIGN PRESSURE (SINGLE WINDOWS)		
MAX. FRAME WIDTH (IN.)	MAX. FRAME HEIGHT (IN.)	ALLOWABLE PRESSURE (+/- PSF)
48	63	30
36	72	30
36	63	35

ANCHOR/SUBSTRATE EVALUATION NOTE:

ALL ANCHORS IN THEIR SPECIFIED SUBSTRATES HAVE BEEN ANALYZED IN ACCORDANCE WITH THEIR APPLICABLE STANDARD(S) AND ARE FOUND TO BE CAPABLE OF SUPPORTING ALL LOADS IMPOSED ON THEM UNDER THE GUIDELINES OF THIS DOCUMENT. ANY SUBSTRATES OR CONDITIONS OUTSIDE OF WHAT IS SHOWN HERE-IN SHALL BE SUBJECT TO JOB SPECIFIC ENGINEER'S REVIEW & CERTIFICATION.

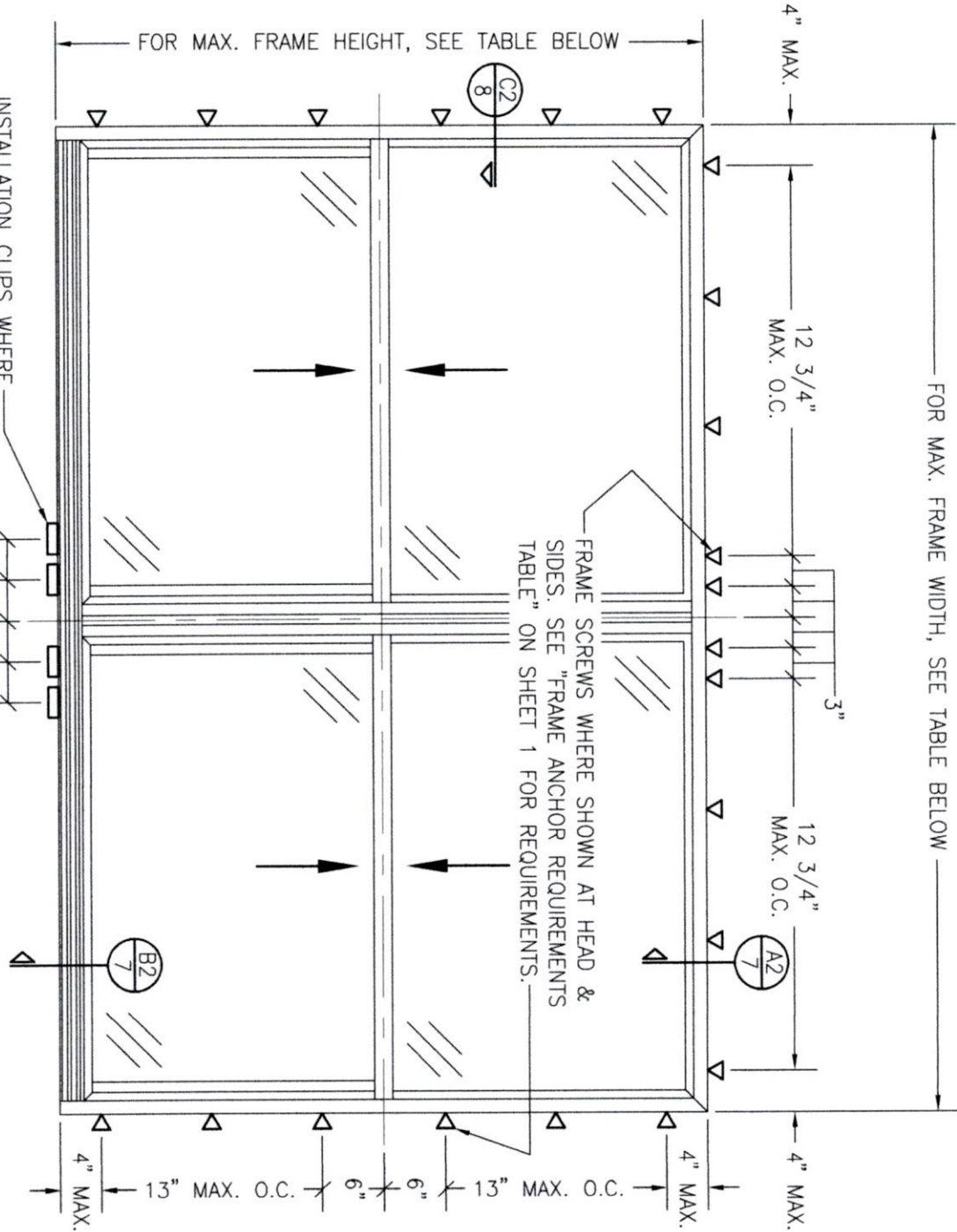
THESE DRAWINGS ARE APPLICABLE ONLY TO THE PRODUCT SPECIFIED. THEY MAY NOT BE USED FOR THE ASSEMBLY AND/OR INSTALLATION OF ANY OTHER PRODUCT NOR MAY THEY BE USED FOR RATIONAL AND/OR LOCAL APPROVAL OF ANY PRODUCT NOT PRODUCED BY THE MANUFACTURER STATED ON THESE DRAWINGS.

DRAWN BY: M.W.S.	CHECKED BY: M.W.S.	DATE: 03/09/23	PLOT: 1=16	NO.	REVISION	DESCRIPTION	BY	DATE	DRAWING NO. REV.	
									2017A	
									SHEET NO.	8
DRAWING TITLE: COMFORT SHIELD VINYL DOUBLE HUNG NON-IMPACT STANDARD PERFORMANCE WINDOW										
CONSULTANTS: W. W. SCHAEFER ENGINEERING & CONSULTING, P.A. 26376 NADIR ROAD; UNIT 309 PUNTA GORDA, FL 33983 PHONE: 561-744-3424					MANUFACTURER: CUSTOM WINDOW SYSTEMS, INC. 1900 SW 44TH AVENUE OCALA, FL 34474 352-368-6922					
CERTIFICATION: WARREN W. SCHAEFER, P.E. P.E. NO. 44135										



FIN FASTENER WITHIN 2" OF CORNERS & 9" MAX. O.C. SEE "FRAME ANCHOR REQUIREMENTS TABLE" ON SHEET 1 FOR REQUIREMENTS.

**EXTERIOR ELEVATION:
DOUBLE WINDOW**
SCALE: 3/4" = 1'-0"
(NAIL FIN MOUNT CONDITION)



INSTALLATION CLIPS WHERE SHOWN AT SILL. SEE "FRAME ANCHOR REQUIREMENTS TABLE" ON SHEET 1 FOR REQUIREMENTS.

**EXTERIOR ELEVATION:
DOUBLE WINDOW**
SCALE: 3/4" = 1'-0"
(FRAME SCREW AND CLIP MOUNT CONDITION)

ALLOWABLE DESIGN PRESSURE (DOUBLE WINDOWS)		
MAX. FRAME WIDTH (IN.)	MAX. FRAME HEIGHT (IN.)	ALLOWABLE PRESSURE (+/- PSF)
96	63	30
72 1/2	72	30
72 1/2	63	35

DRAWN BY:		CHECKED BY:		
W.M.S.		W.M.S.		
DATE:		DATE:		
1=16		03/09/23		
NO.	REVISION	DESCRIPTION	BY	DATE

MANUFACTURER

 **CUSTOM WINDOW SYSTEMS, INC.**
1900 SW 44TH AVENUE
OCALA, FL 34474
352-368-6922

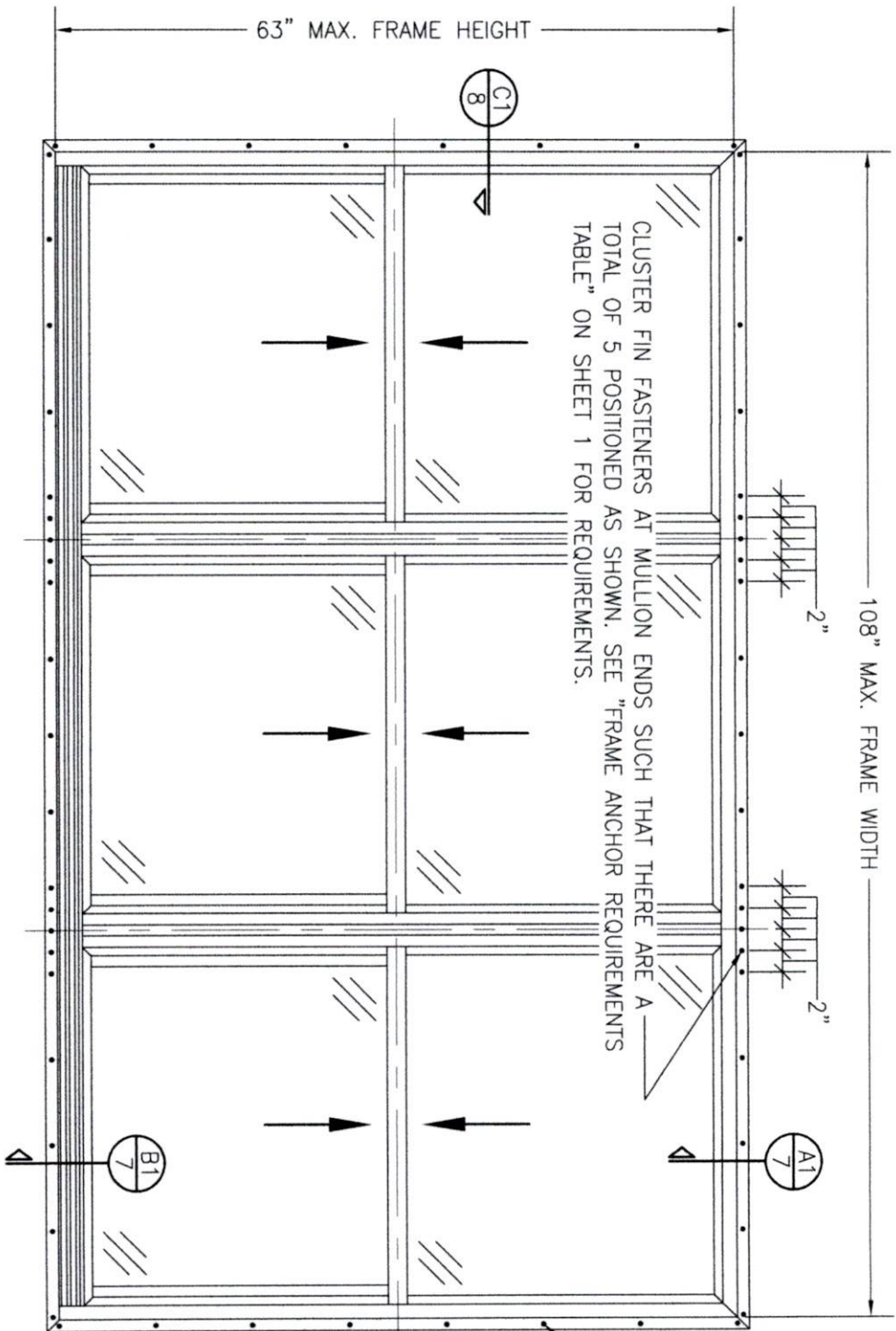
DRAWING TITLE COMFORT SHIELD VINYL DOUBLE HUNG NON-IMPACT STANDARD PERFORMANCE WINDOW

CONSULTANTS
W. W. SCHAEFER ENGINEERING & CONSULTING, P.A.
26376 NADIR ROAD; UNIT 309
PUNTA GORDA, FL 33983
PHONE: 561-744-3424

CERTIFICATION

WARREN W. SCHAEFER, P.E.
P.E. NO. 44135

DRAWING NO. 2017A
SHEET NO. 2 OF 8



FIN FASTENER WITHIN
2" OF CORNERS & 9"
MAX. O.C. SEE "FRAME
ANCHOR REQUIREMENTS
TABLE" ON SHEET 1
FOR REQUIREMENTS.

EXTERIOR ELEVATION:
TRIPLE WINDOW

SCALE: 3/4" = 1'-0"
(NAIL FIN MOUNT CONDITION)

ALLOWABLE DESIGN PRESSURE (108" X 63" TRIPLE WINDOW UNITS)
+/-35 PSF

DRAWN BY: W.M.S.		CHECKED BY: W.M.S.	
PLOT: 1=16		DATE: 03/09/23	
NO.	REVISION DESCRIPTION	BY	DATE

MANUFACTURER

CUSTOM WINDOW SYSTEMS, INC.
1900 SW 44TH AVENUE
OCALA, FL 34474
352-368-6922

DRAWING TITLE

COMFORT SHIELD VINYL DOUBLE HUNG NON-IMPACT
STANDARD PERFORMANCE WINDOW

CONSULTANTS

W. W. SCHAEFER ENGINEERING
& CONSULTING, P.A.
26376 NADIR ROAD; UNIT 309
PUNTA GORDA, FL 33983
PHONE: 561-744-3424

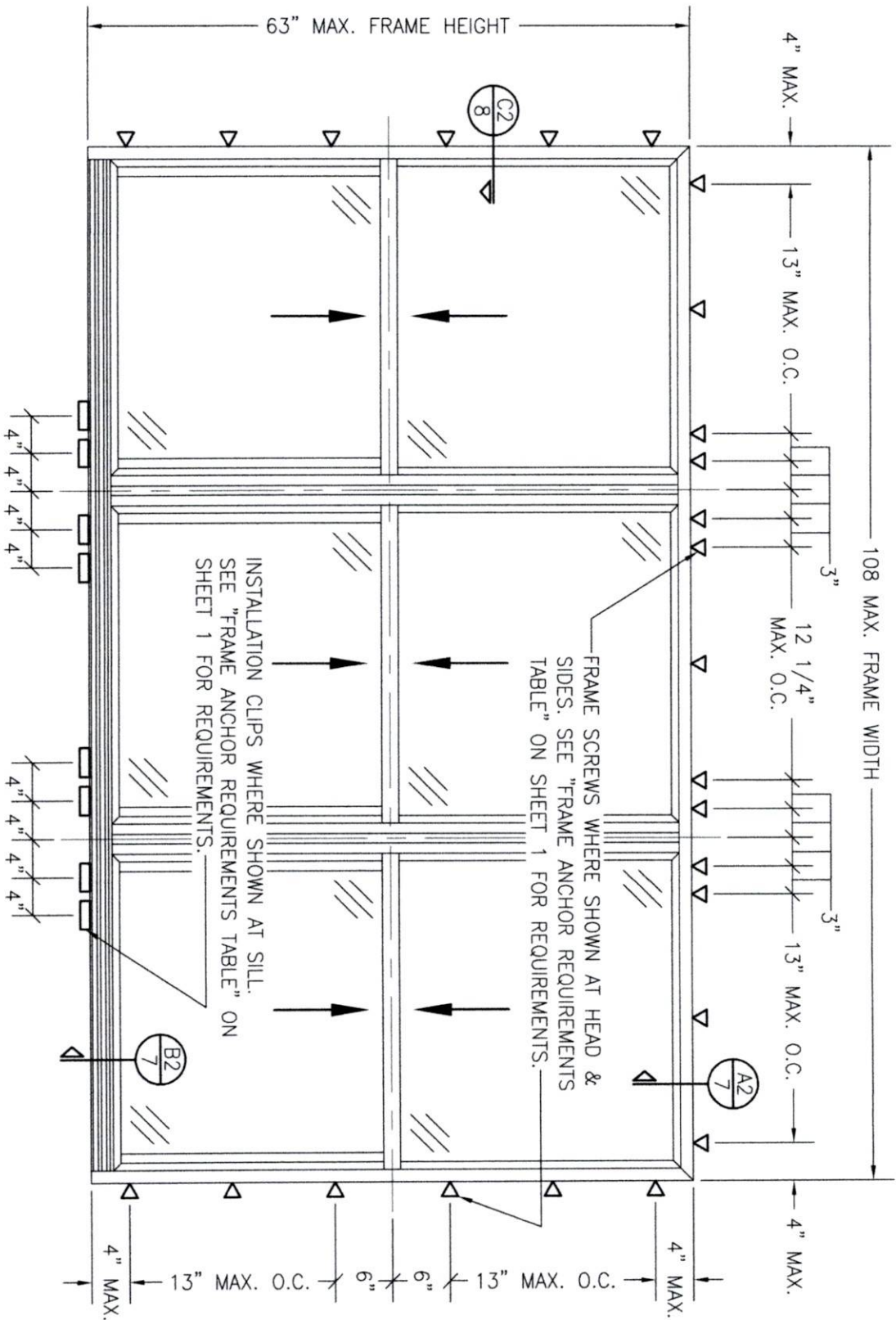
CERTIFICATION

WARREN W. SCHAEFER, P.E.
P.E. NO. 44135

DRAWING NO.
2017A

REV.

SHEET NO.
3 OF 8



EXTERIOR ELEVATION:
TRIPLE WINDOW

SCALE: 3/4" = 1'-0"

(FRAME SCREW AND CLIP MOUNT CONDITION)

ALLOWABLE DESIGN PRESSURE (108" X 63" TRIPLE WINDOW UNITS)
+/-35 PSF

DRAWN BY: W.W.S.	CHECKED BY: W.W.S.
DATE: 03/09/23	
NO.	REVISION DESCRIPTION

MANUFACTURER
 **CUSTOM WINDOW SYSTEMS, INC.**
1900 SW 44TH AVENUE
OCALA, FL 34474
352-368-6922

DRAWING TITLE
**COMFORT SHIELD VINYL DOUBLE HUNG NON-IMPACT
STANDARD PERFORMANCE WINDOW**

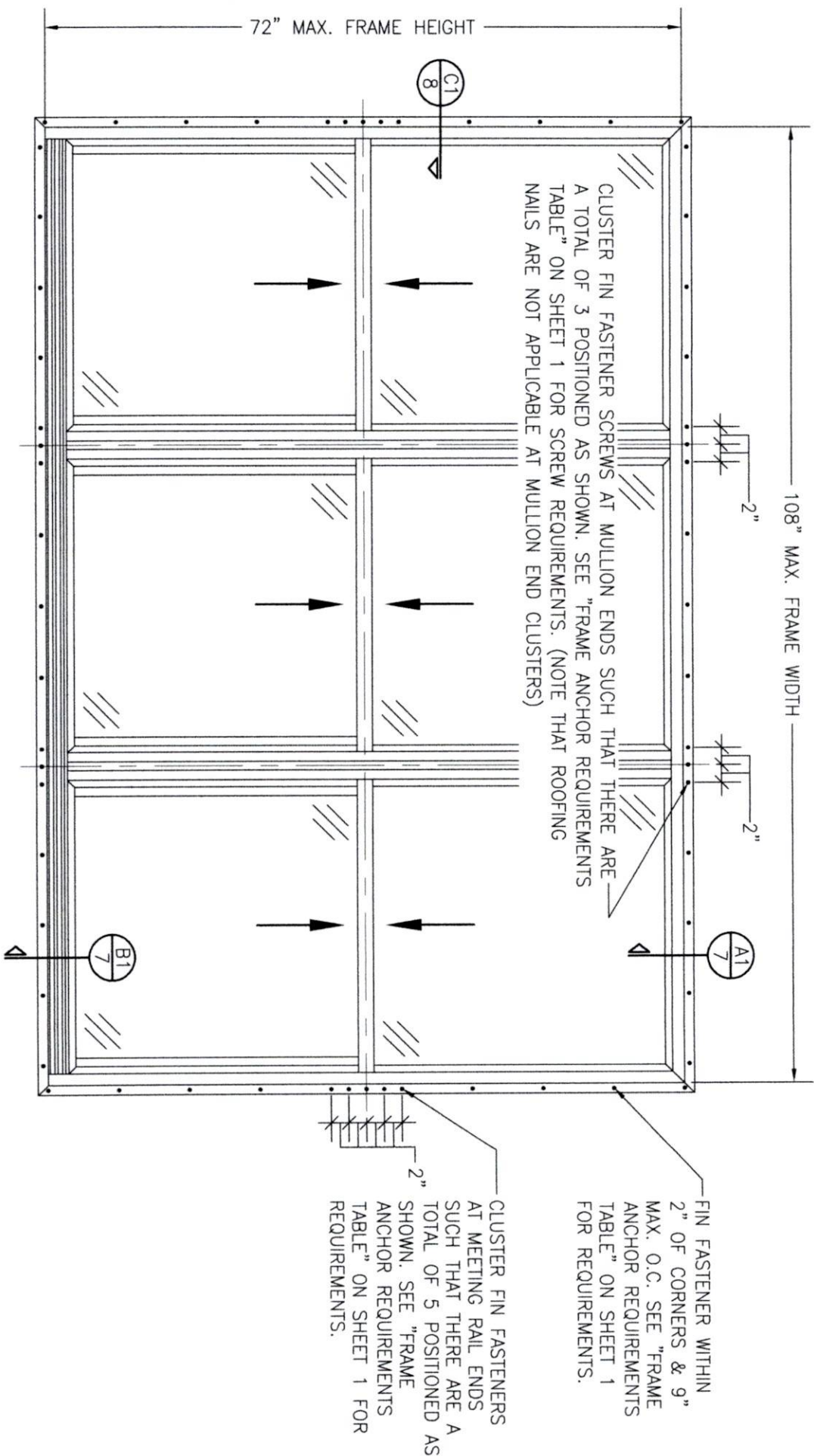
CONSULTANTS
**W. W. SCHAEFER ENGINEERING
& CONSULTING, P.A.**
26376 NADIR ROAD; UNIT 309
PUNTA GORDA, FL 33983
PHONE: 561-744-3424

CERTIFICATION

WARREN W. SCHAEFER, P.E.
P.E. NO. 44135

DRAWING NO.
2017A

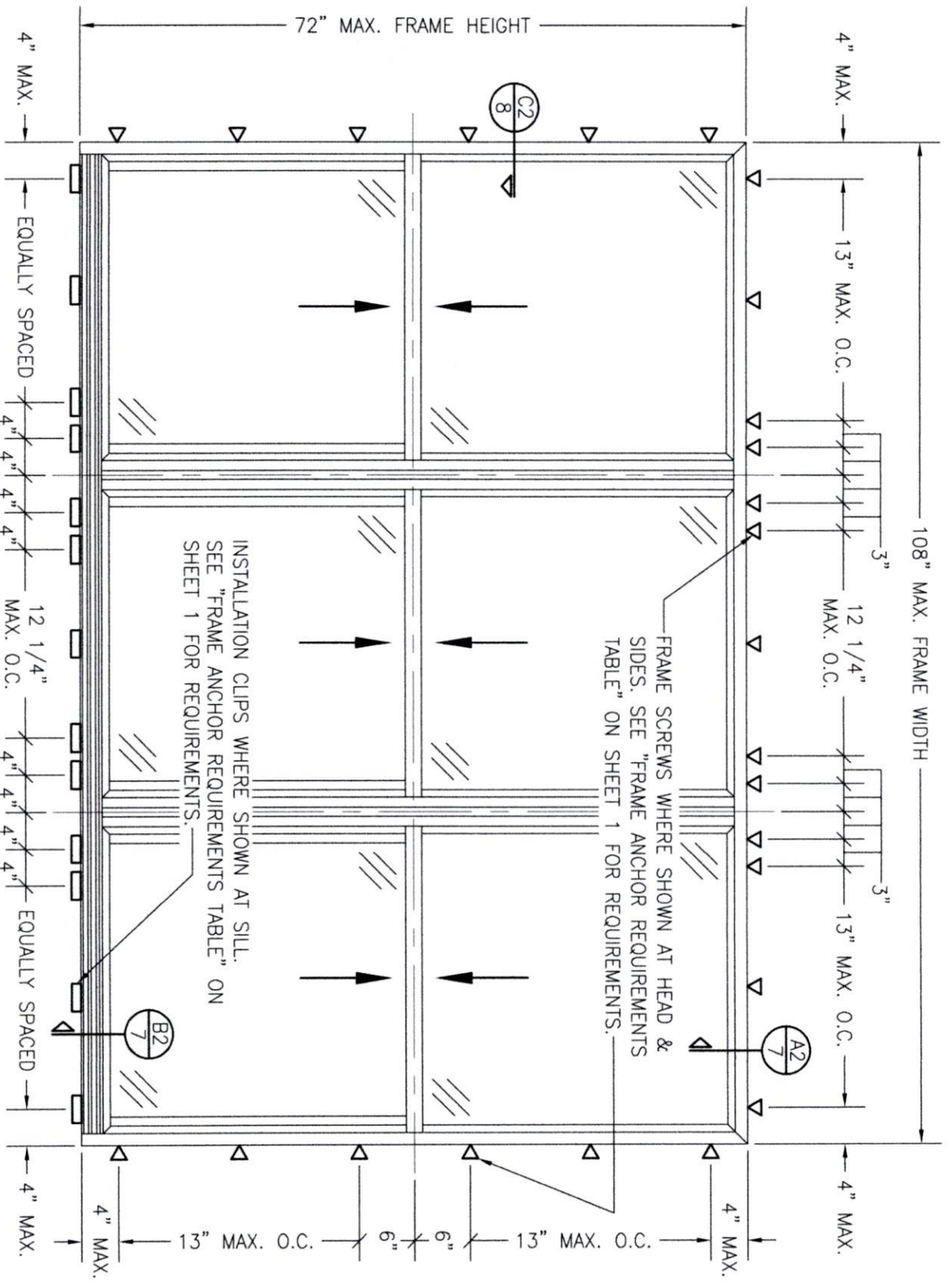
SHEET NO.
4 OF 8



EXTERIOR ELEVATION:
TRIPLE WINDOW
SCALE: 3/4" = 1'-0"
(NAIL FIN MOUNT CONDITION)

ALLOWABLE DESIGN PRESSURE
(108" X 72" TRIPLE WINDOW UNITS WITH NAIL FIN MOUNT INSTALLATION ONLY)
+/-30 PSF

DRAWING NO. 2017A	REV.	CERTIFICATION WARREN W. SCHAEFER, P.E. P.E. NO. 44135	DRAWING TITLE COMFORT SHIELD VINYL DOUBLE HUNG NON-IMPACT STANDARD PERFORMANCE WINDOW	CONSULTANTS W. W. SCHAEFER ENGINEERING & CONSULTING, P.A. 26376 NADIR ROAD; UNIT 309 PUNTA GORDA, FL 33983 PHONE: 561-744-3424	MANUFACTURER  CUSTOM WINDOW SYSTEMS, INC. 1900 SW 44TH AVENUE OCALA, FL 34474 352-368-6922	DRAWN BY: _____ CHECKED BY: _____ W.S. W.S. DATE: 05/09/23			
						NO.	REVISION	DESCRIPTION	BY



EXTERIOR ELEVATION:
TRIPLE WINDOW
SCALE: 3/4" = 1'-0"
(FRAME SCREW AND CLIP MOUNT CONDITION)

ALLOWABLE DESIGN PRESSURE
(108" X 72" TRIPLE WINDOW UNITS WITH FRAME SCREW & CLIP MOUNT INSTALLATION ONLY)
+/-30 PSF

DRAWN BY:	CHECKED BY:
W.W.S.	W.W.S.
DATE: 03/09/23	
NO.	REVISION DESCRIPTION

COMFORT SHIELD VINYL DOUBLE HUNG NON-IMPACT STANDARD PERFORMANCE WINDOW

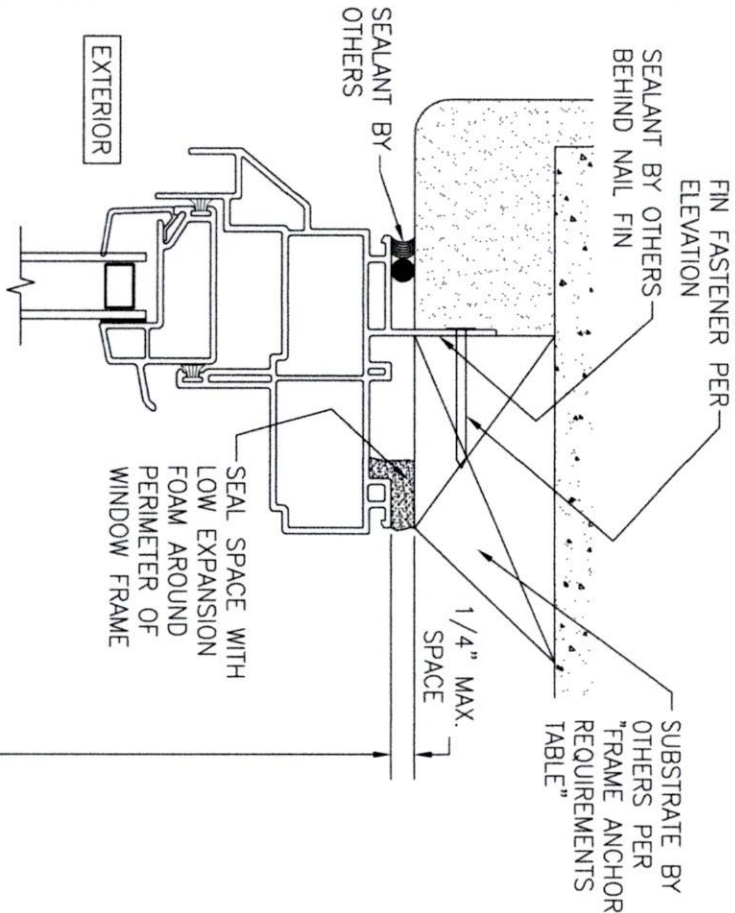
CONSULTANTS
W. W. SCHAEFER ENGINEERING & CONSULTING, P.A.
26376 NADIR ROAD; UNIT 309
PUNTA GORDA, FL 33983
PHONE: 561-744-3424

MANUFACTURER
**CUSTOM WINDOW SYSTEMS, INC.**
1900 SW 44TH AVENUE
OCALA, FL 34474
352-368-6922

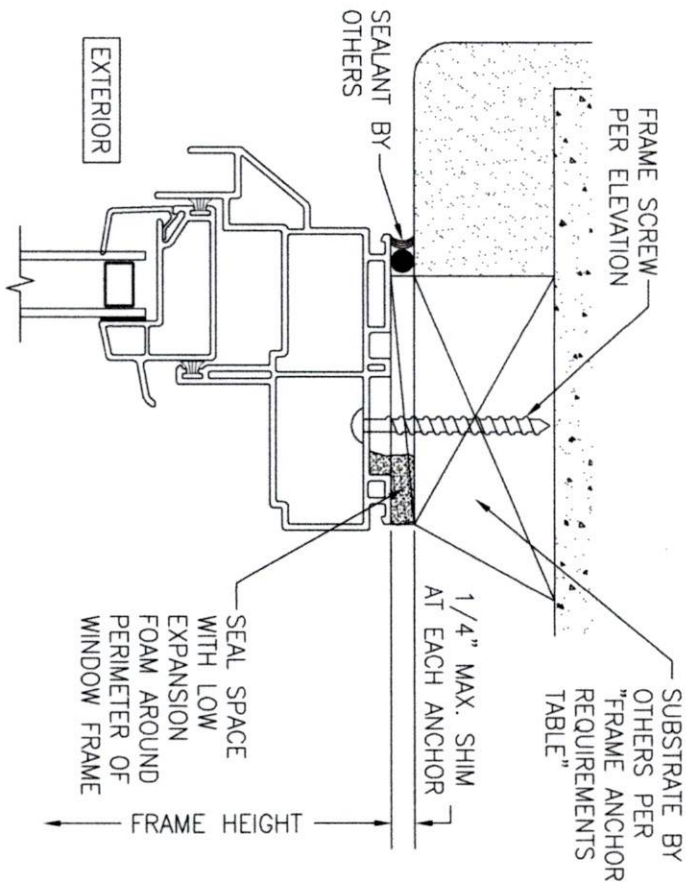
CERTIFICATION

WARREN W. SCHAEFER, P.E.
P.E. NO. 44135

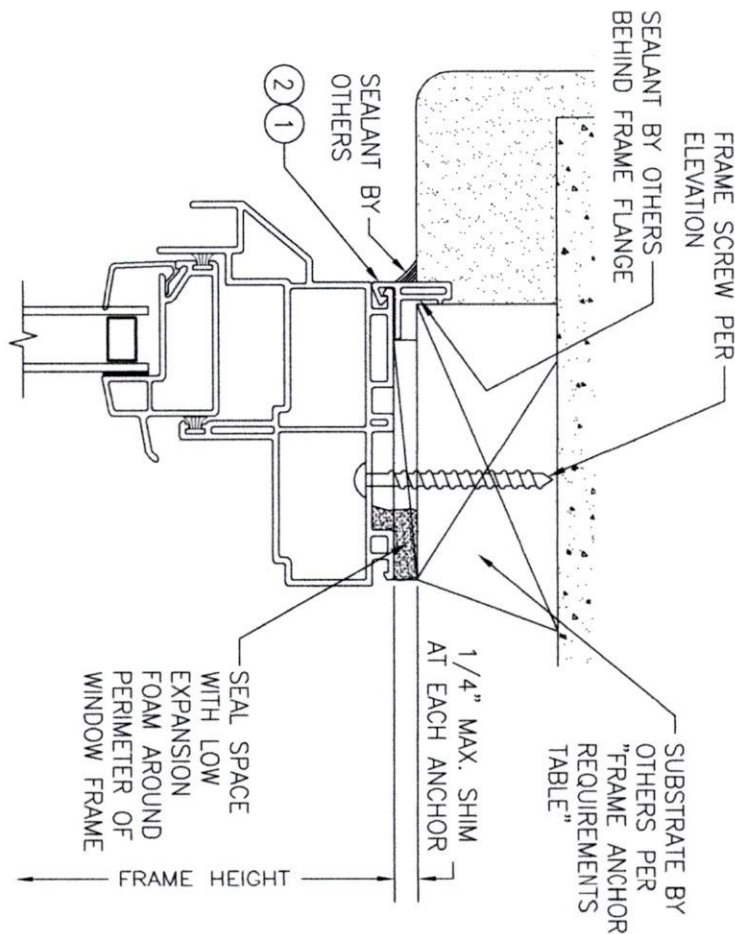
DRAWING NO. 2017A
SHEET NO. 6 OF 8



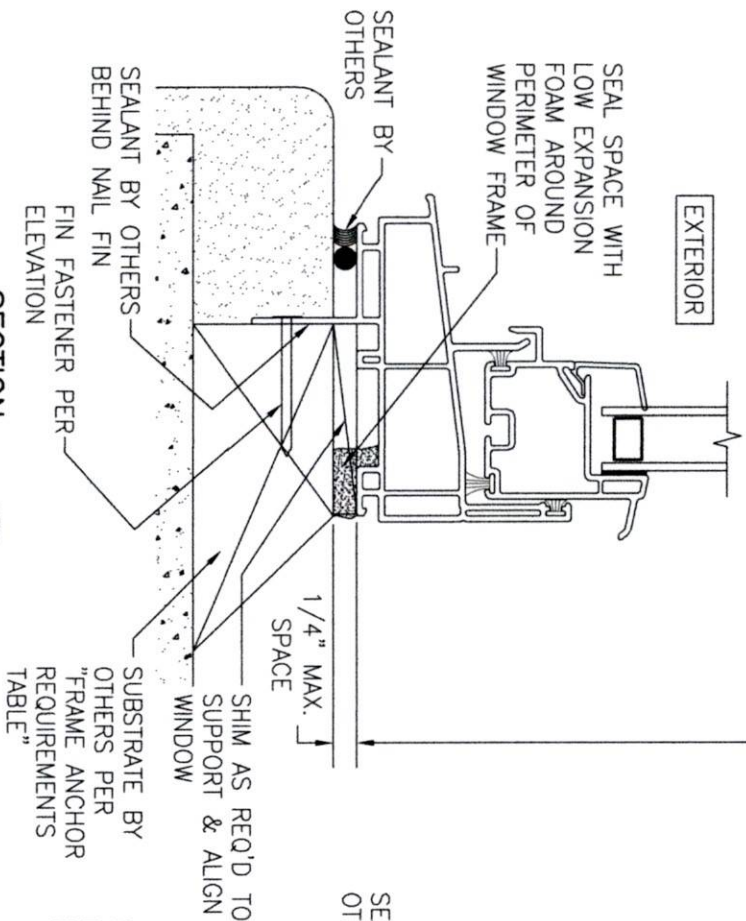
SECTION A1
SCALE: 3/4 FULL
(NAIL FIN MOUNT)



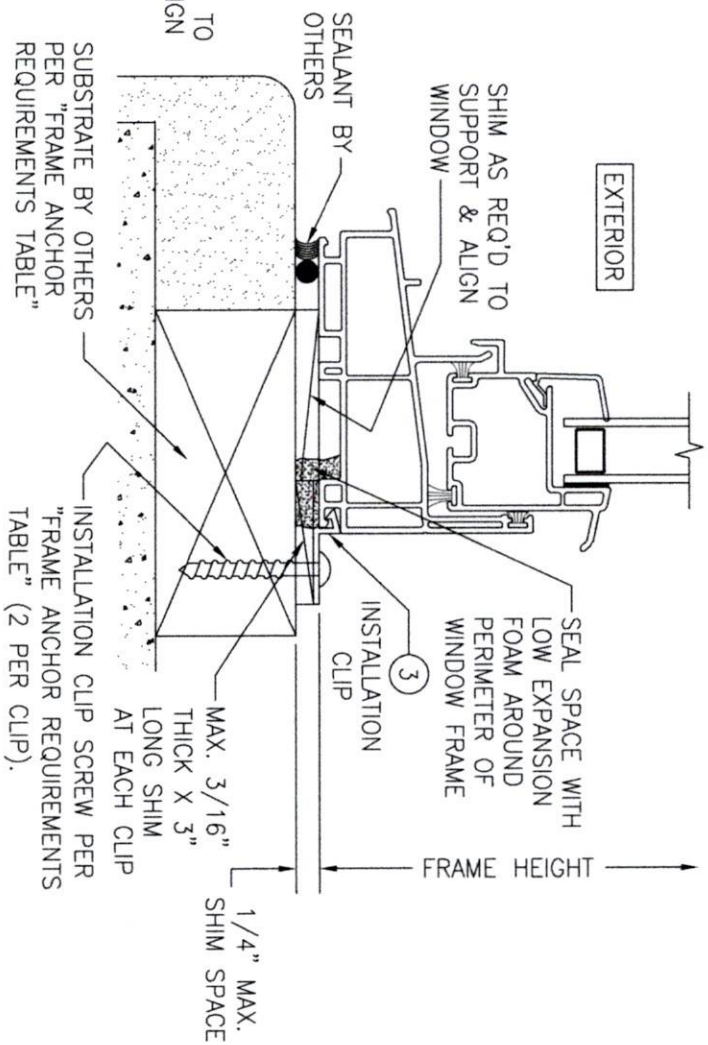
SECTION A2
SCALE: 3/4 FULL
(FRAME SCREW MOUNT CONDITION)



ALTERNATE SECTION A2
SCALE: 1/2 FULL
(FRAME SCREW MOUNT CONDITION WITH FLANGE)



SECTION B1
SCALE: 3/4 FULL
(NAIL FIN MOUNT)



SECTION B2
SCALE: 3/4 FULL
(INSTALLATION CLIP MOUNT CONDITION)

NO.	REVISION	DESCRIPTION	BY	DATE

MANUFACTURER

CUSTOM WINDOW SYSTEMS, INC.
1900 SW 44TH AVENUE
OCALA, FL 34474
352-368-6922

CONSULTANTS

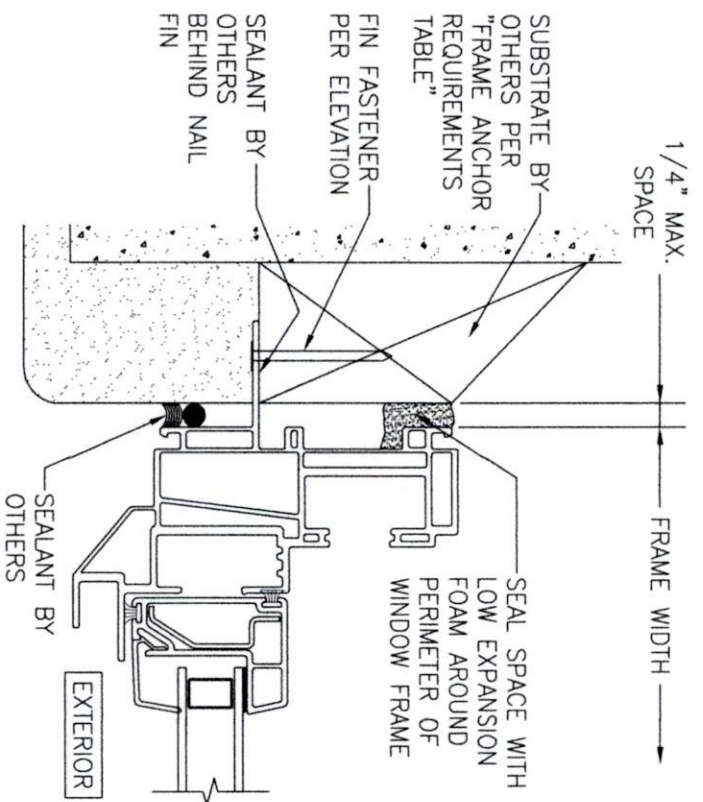
W. W. SCHAEFER ENGINEERING & CONSULTING, P.A.
26376 NADIR ROAD, UNIT 309
PUNTA GORDA, FL 33983
PHONE: 561-744-3424

CERTIFICATION

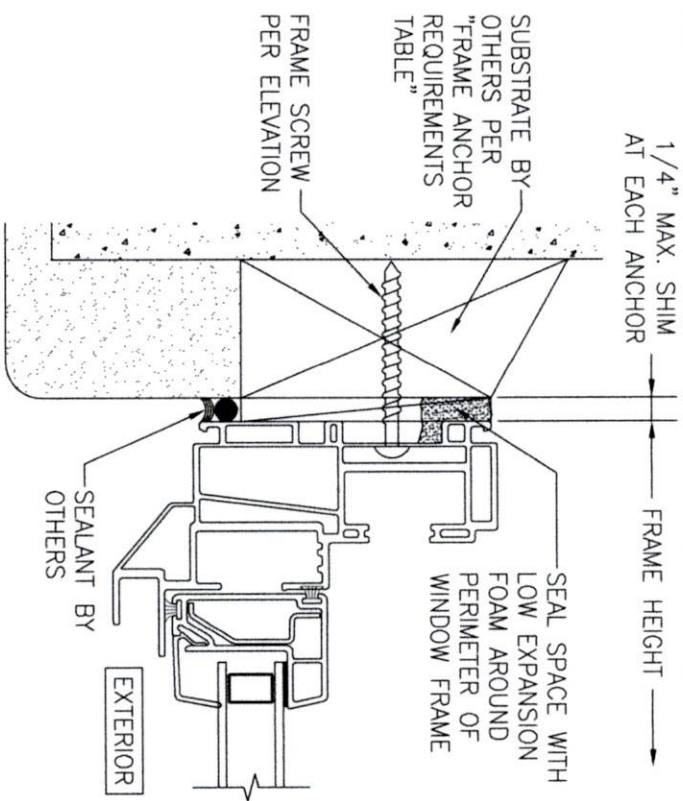
WARREN W. SCHAEFER, P.E.
P.E. NO. 44135

DRAWING NO.
2017A

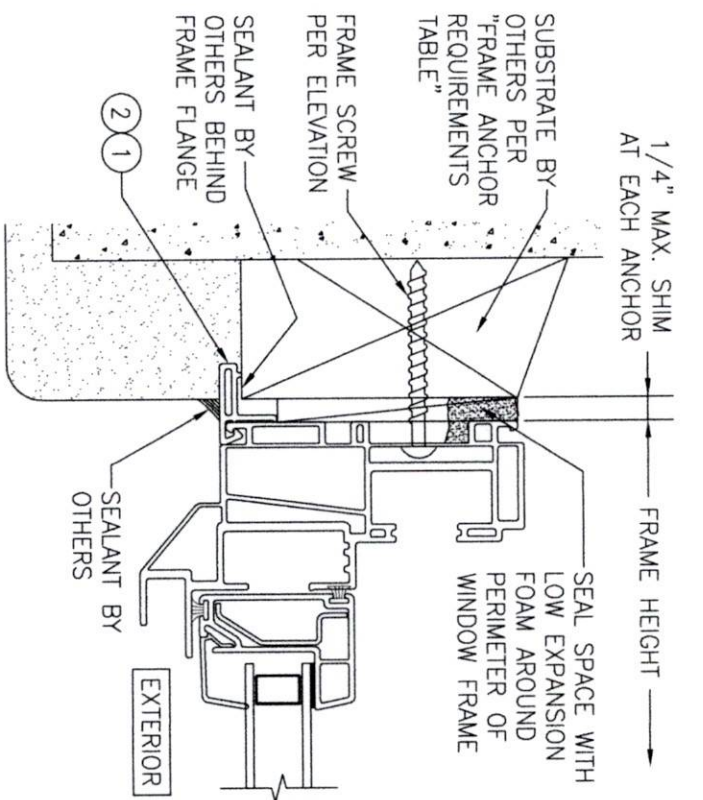
SHEET NO.
7 OF 8



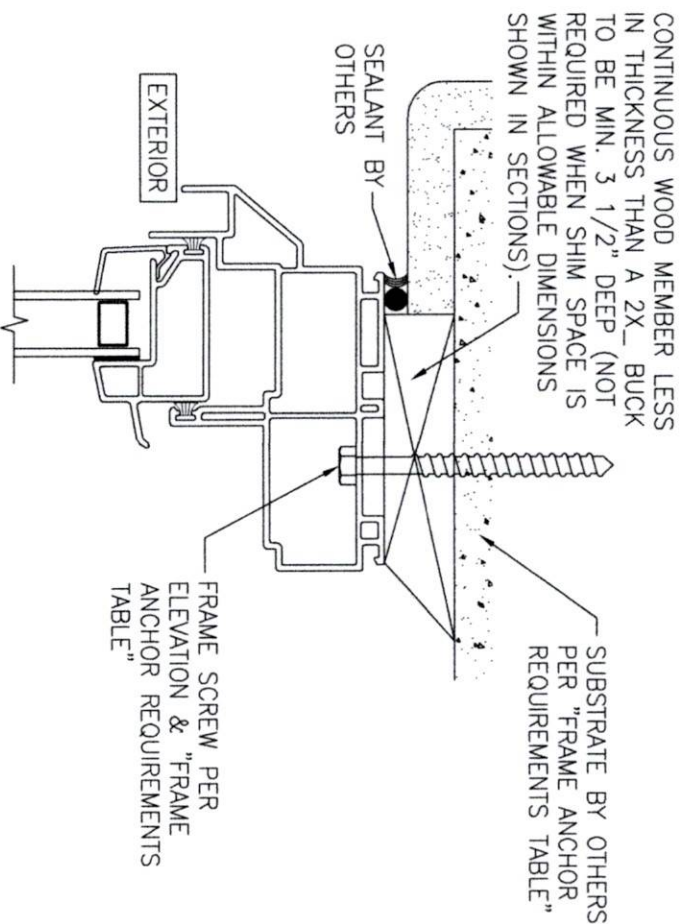
SECTION C1
SCALE: 3/4 FULL
(NAIL FIN MOUNT)



SECTION C2
SCALE: 3/4 FULL
(FRAME SCREW MOUNT CONDITION)

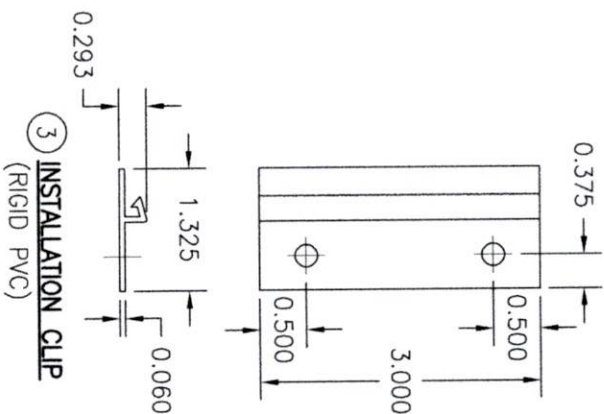
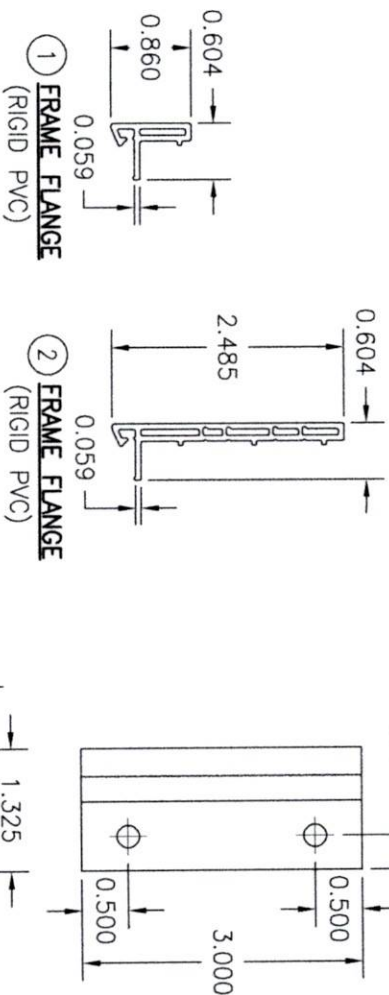


ALTERNATE SECTION C2
SCALE: 1/2 FULL
(FRAME SCREW MOUNT CONDITION WITH FLANGE)



OPTIONAL DIRECT MOUNT DETAIL
TO SUBSTRATE WITH SPACER

(HEAD SECTION SHOWN; SIDES ARE INSTALLED THE SAME)
(DIRECT MOUNT CONDITION IS NOT APPLICABLE AT SILL)
(FOR DETAIL NOT SHOWN, SEE OTHER SECTIONS)



NO.	REVISION	DESCRIPTION	BY	DATE

MANUFACTURER

CUSTOM WINDOW SYSTEMS, INC.
 1900 SW 44TH AVENUE
 OCALA, FL 34474
 352-368-6922

CONSULTANTS
W. W. SCHAEFER ENGINEERING & CONSULTING, P.A.
 26376 NADIR ROAD; UNIT 309
 PUNTA GORDA, FL 33983
 PHONE: 561-744-3424

CERTIFICATION
 WARREN W. SCHAEFER, P.E.
 P.E. NO. 44135

DRAWING NO.
 2017A

SHEET NO.
 8 OF 8