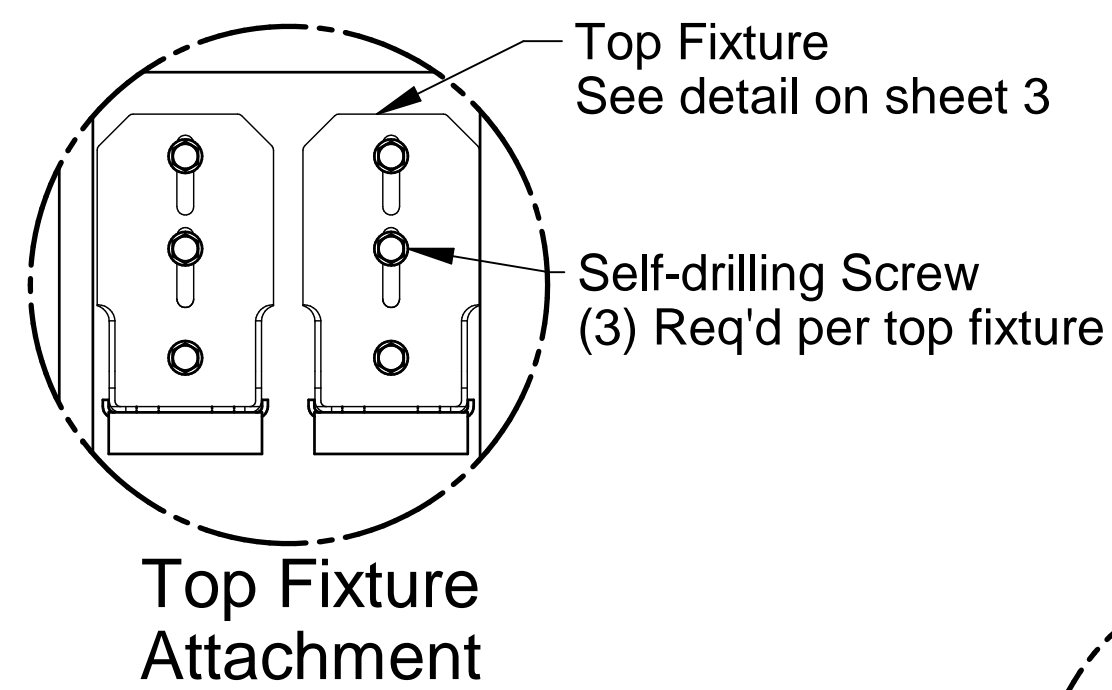


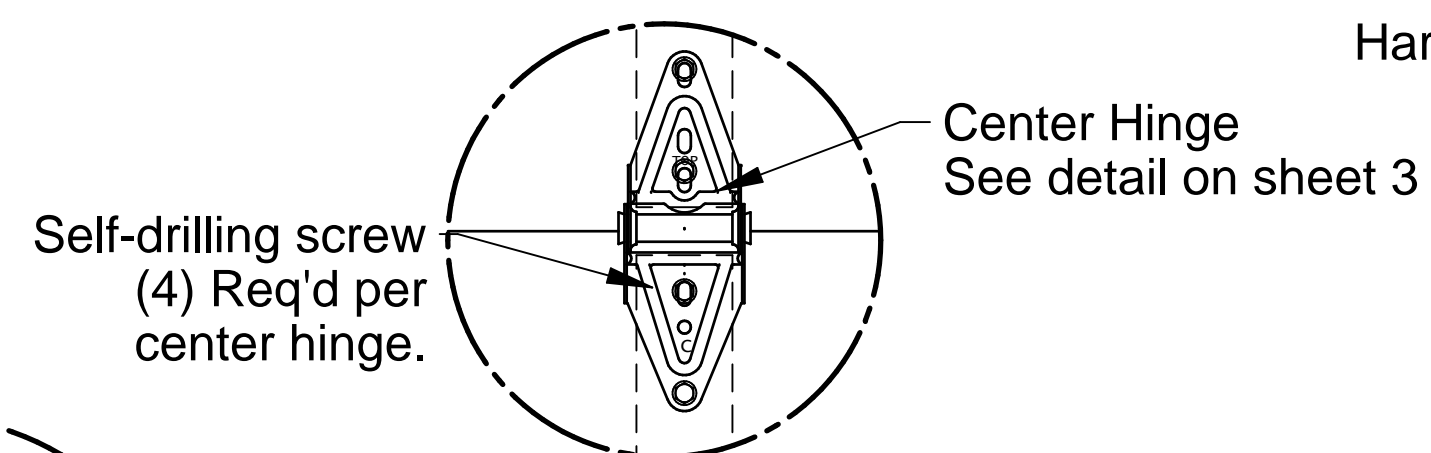
Section A-A



Top Fixture Attachment

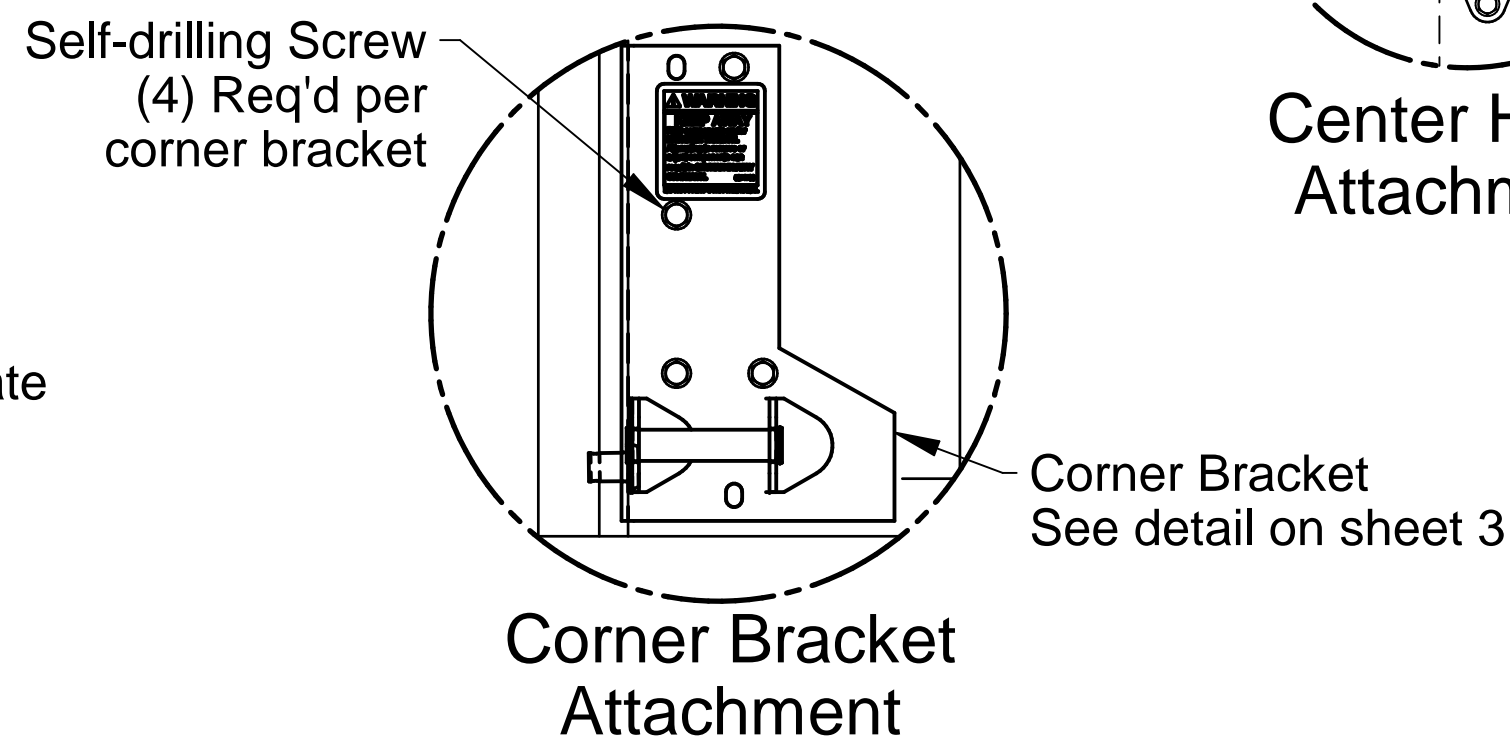
Top Fixture  
See detail on sheet 3

Self-drilling Screw  
(3) Req'd per top fixture



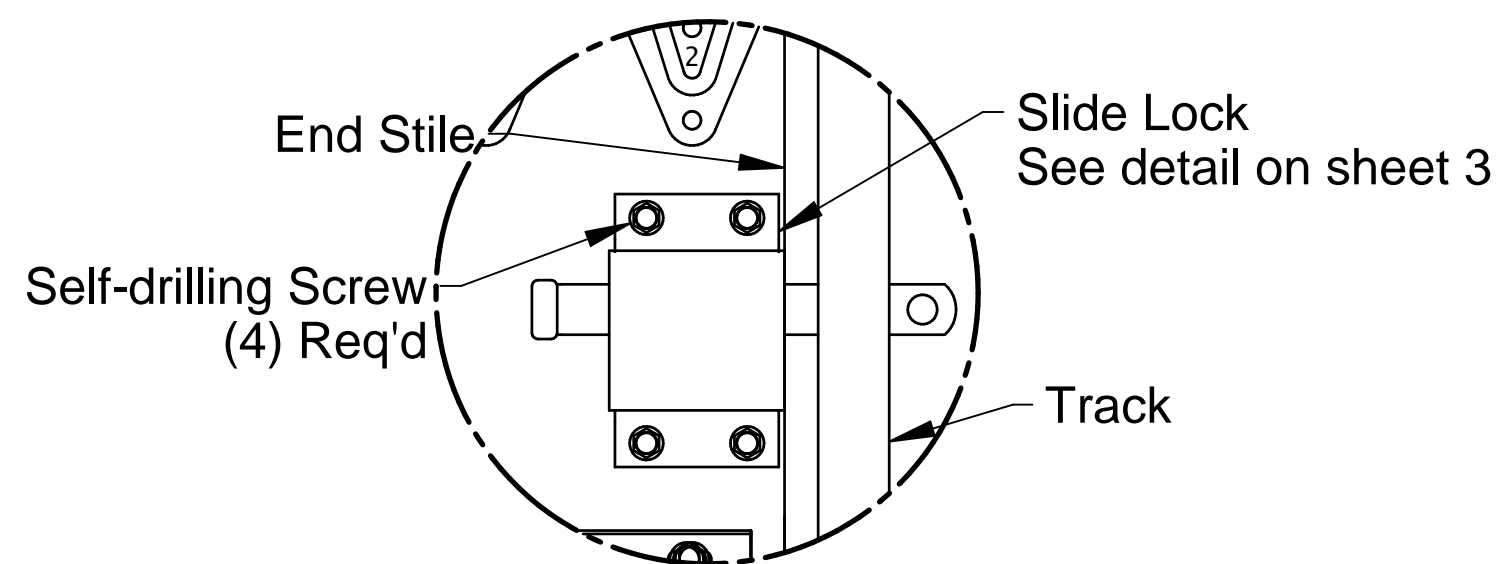
Center Hinge Attachment

Self-drilling screw  
(4) Req'd per center hinge.



Corner Bracket Attachment

Self-drilling Screw  
(4) Req'd per corner bracket



Optional Interior Lock Attachment

End Stile

Slide Lock  
See detail on sheet 3

Self-drilling Screw  
(4) Req'd

Track

Interior Skin  
.015 Thick G-40 galvanized steel with an epoxy primer and baked on polyester finish which is roll-formed with a texture embossed skin.

Exterior Skin  
G-40 galvanized steel with an epoxy primer and baked on polyester finish which is roll-formed with a texture embossed skin.  
.015 Thick: EC200, EN200C, EN200  
.022 Thick: EC224

Hardware Plate .035 thick

Section B-B

Insulation Core  
Expanded Polystyrene

Retaining Nut  
7/16" push on retaining nut  
(1) req'd per roller.  
See detail on sht. 3

1/2"

Jambs  
See sht. 2 for attachment

Hex Head Lag Screw  
(2) per bracket.  
See detail on sht. 3

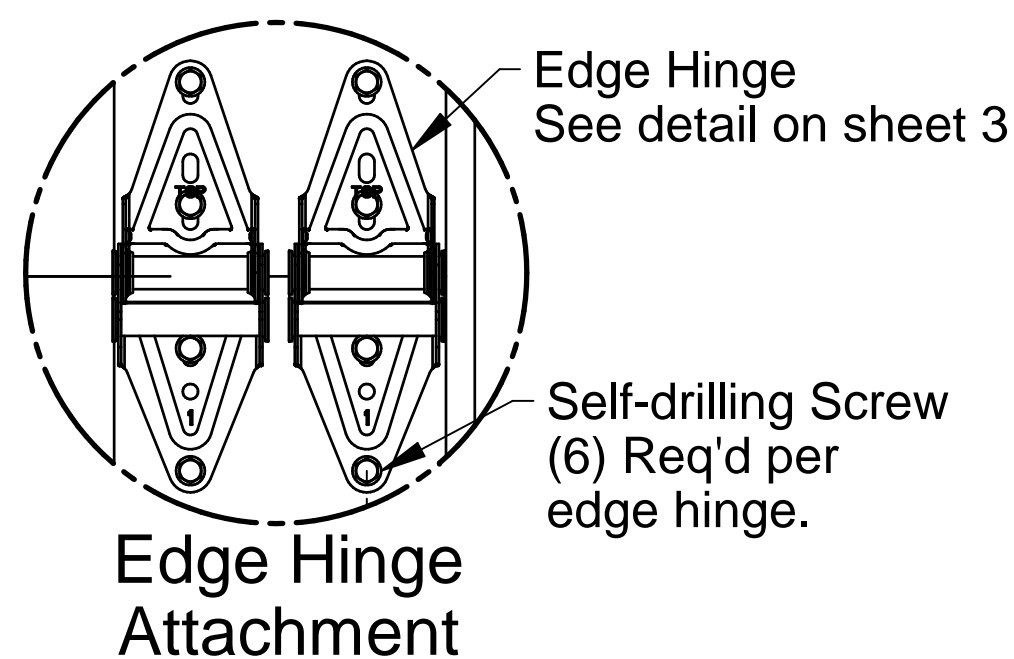
Track Bracket  
See detail on sht. 3

Track Bolt / Nut  
See detail on sht. 3

End stile  
16 Ga. min. Galv. Steel

Track Roller  
See detail on sht. 3

Track, 2" shown, 3" optional  
See detail on sht. 3



Edge Hinge Attachment

Edge Hinge  
See detail on sheet 3

Self-drilling Screw  
(6) Req'd per edge hinge.

Spring Counterbalance  
Spring wire individually calculated to counterbalance door.  
Quantity and size of spring will vary based on door size.

Door Height

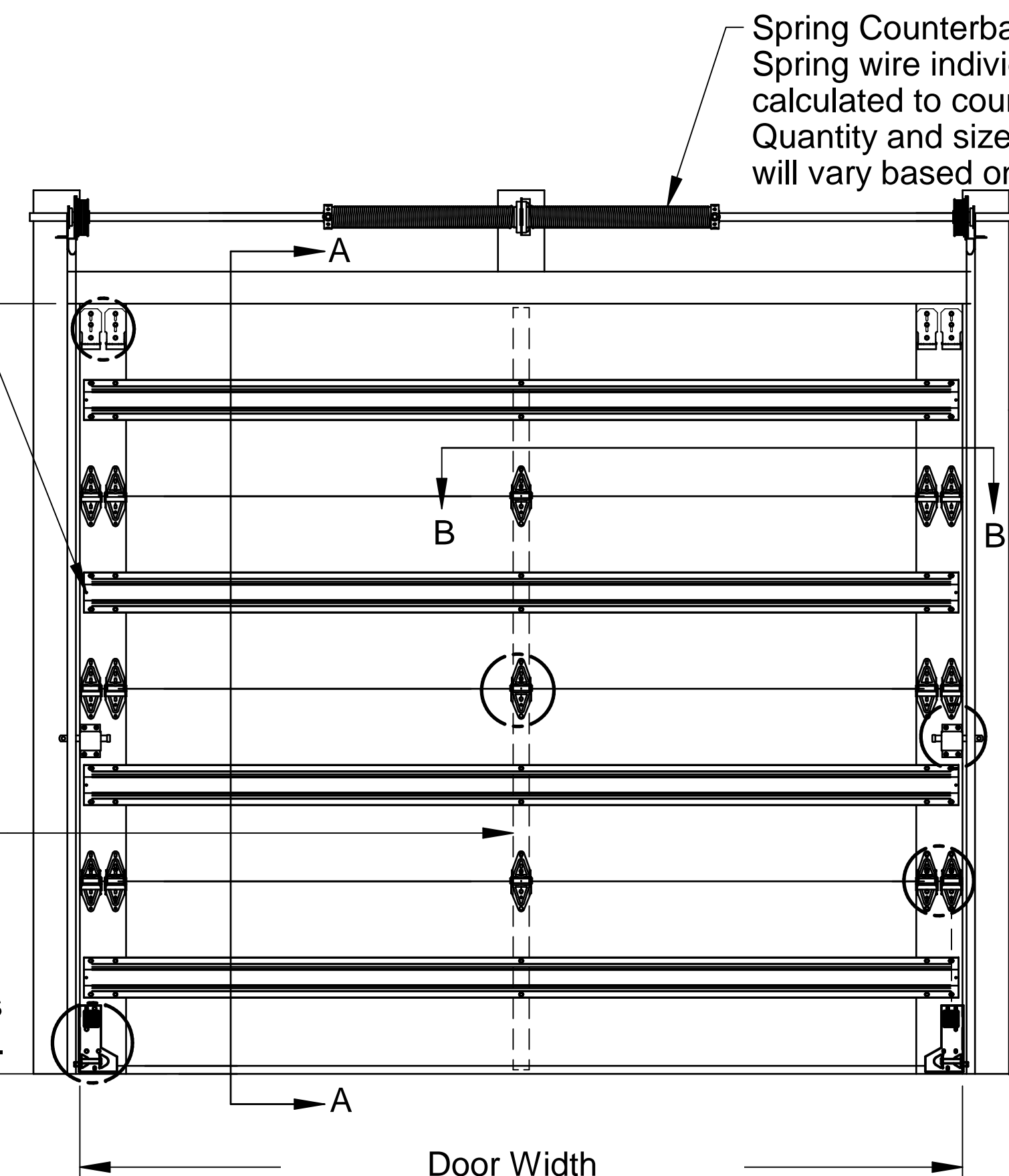
8'-0" High shown  
Other door heights available up to 10'-0" - EN200  
or  
18'-0" - EN200C, EC200, EC224  
using 18", 21" or 24" high sections

Steel Reinforcement  
(1) Box strut per section fastened to all center and end stiles using (2) self-drilling screws at each stile.

Embedded Hardware Plates

Locks required on doors not electrically operated.

Vents (Optional)  
Vent openings may be located in bottom section as allowed by local code, 120 sq. in max.



Interior Elevation

Door Width  
See chart for other door widths (9'-2" Ranch shown)

Doors tested per:  
TAS 202-94 for static air pressure  
TAS 201-94/203-94 for large missile impact and cyclic wind pressure

Complies with the Wind Load requirements of the IBC/IRC 2018

EN200 / EN200C / EC200 / EC224			
Max. Door Width	Ctr. Hngs. per Sect.	Design Loads	
9'-2"	1	65.0	-72.0



Scott A. Brown, P.E. Lic. No. 65940  
Willett, Hofmann & Associates, Inc.  
809 E. 2nd Street, Dixon, IL 61021  
FBPE CA Lic. No. 35415  
Structural Adequacy for Wind Load

Scale: None	Drawn by: J. Poitras	Checked by: R. Frey	Date: 07/20/23
ECO: 8838.01	Date: 08/01/23	Date: 07/20/23	
Rev.	Description	ECO	Date
A	New release for production.	8838.01	08/01/23

RAYNOR

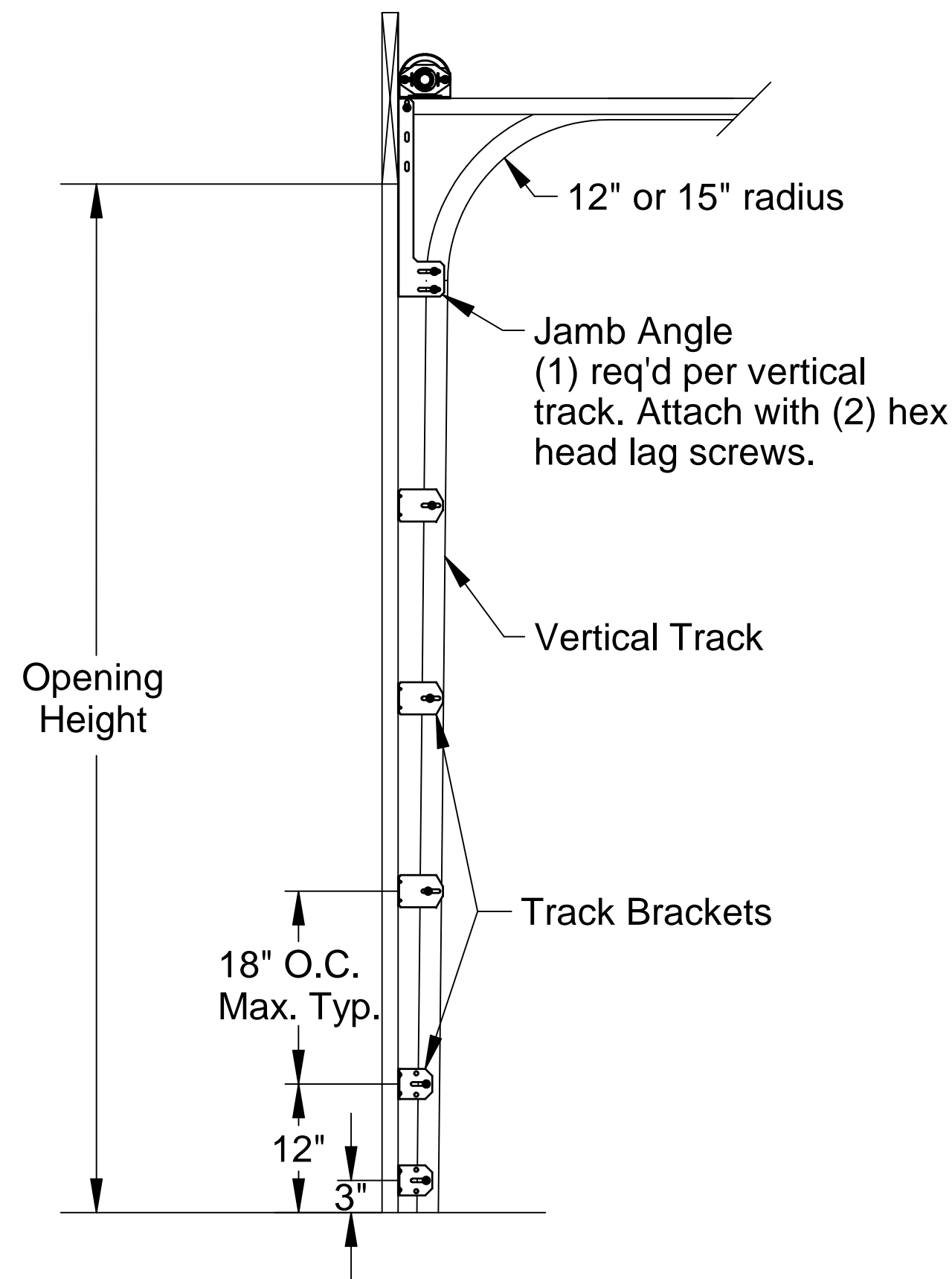
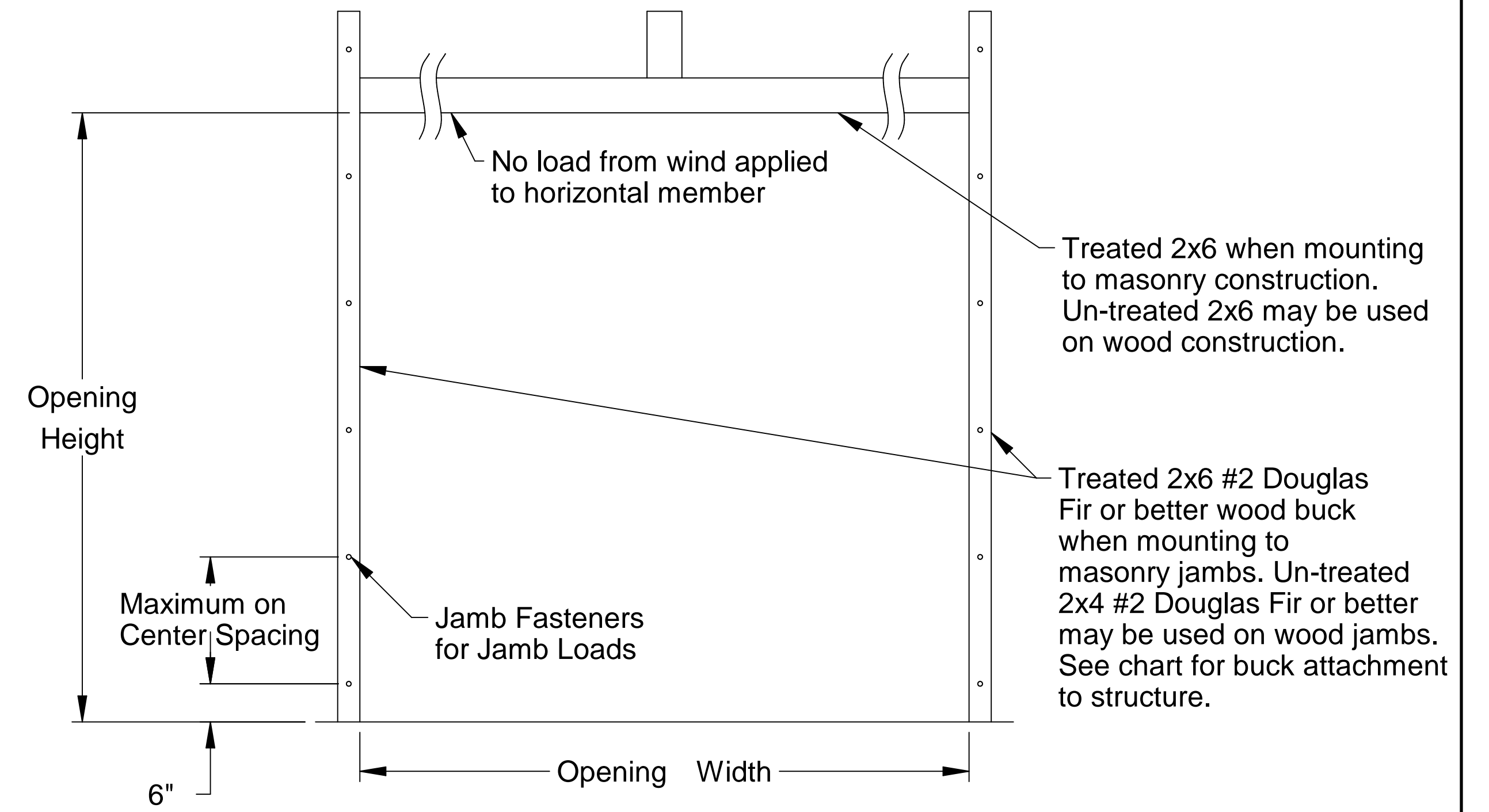
1101 East River Road  
Dixon, IL 61021

Title: Spec, Wind Load Raynor EnergyCore Series, Encore Series		
No. P-3352	Sheet 1 of 4	Rev A

Jamb Attachment Notes:

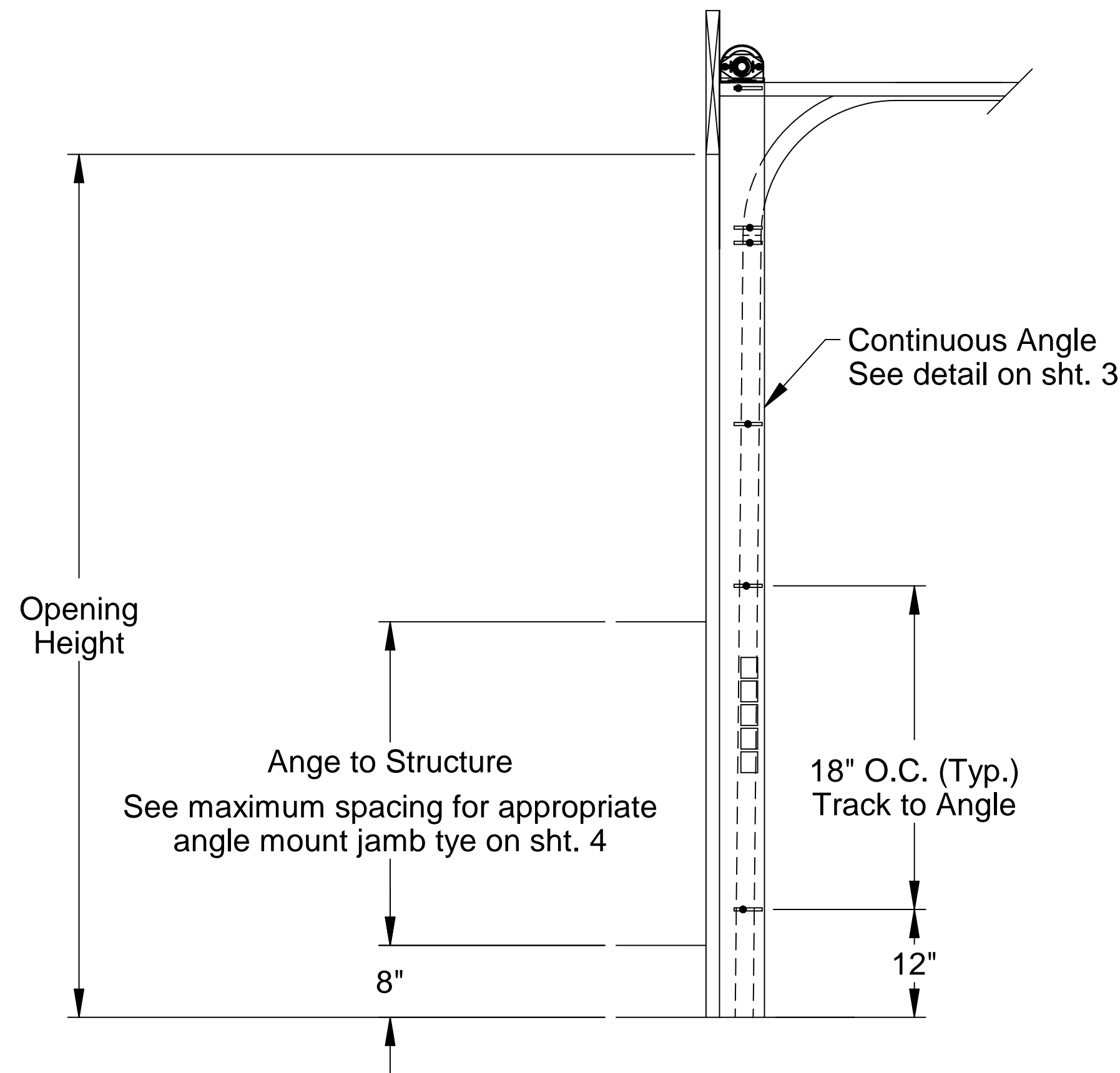
1. Maximum Positive Load per Jamb =  $(9'-2" \times 65.0 \text{ PSF}) / 2 = 299 \text{ lbs. per foot.}$
2. Maximum Negative Load per Jamb =  $(9'-2" \times -72.0 \text{ PSF}) / 2 = 332 \text{ lbs. per foot.}$
3. Design of the supporting structure shall be the sole responsibility of the building designer and shall be designed for the jamb loads listed in notes 1 and 2.
4. Alternate jamb attachments may be used if approved by a registered Professional Engineer.
5. DASMA Technical Data Sheet TDS-161 may be used for alternate jamb attachments.
6. 3/8" diameter lag screws required 1/4" pilot hole and 1-1/2" minimum required distance.
7. Masonry fasteners by others.
8. Garage doors evaluated as attached to enclosed buildings.
9. Garage doors evaluated as components and cladding.

2x6 Attachment to Structure						
Structure Type	Fastener Type	Minimum Embedment	Minimum Edge Distance	Minimum on Center Spacing	Maximum on Center Spacing	Allowable Tension Load
2500 PSI Min. Concrete	1/4" Tapcon+ (Plus) with 1-1/8" OD Washer	2"	2.5	6"	21"	526
Southern Pine	3/8" x 3" Lag with 1-1/8" OD Washer	1.50"	1.50"	1.50"	24"	655
Spruce Pine Fir	3/8" x 3" LAG with 1-1/8" OD Washer	1.50"	1.50"	1.50"	19"	482



Typical Track Installation  
Bracket Mount  
Wood Jamb

Normal headroom track shown, low headroom, lift clearance and vertical lift track available.



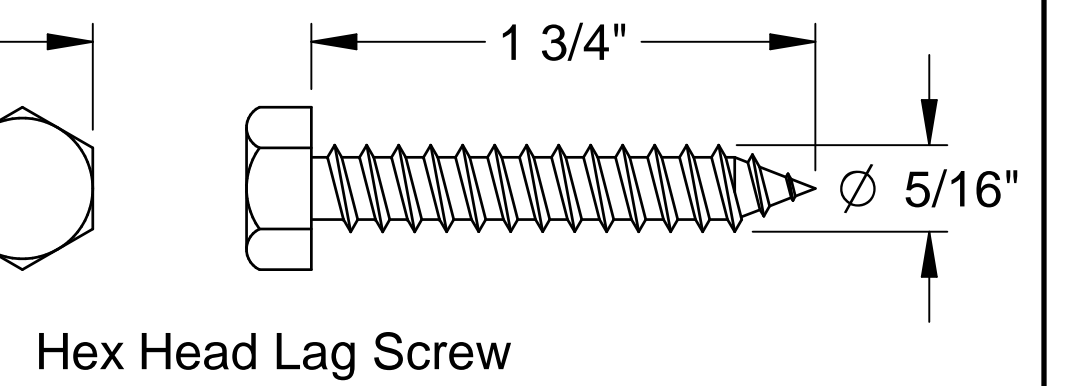
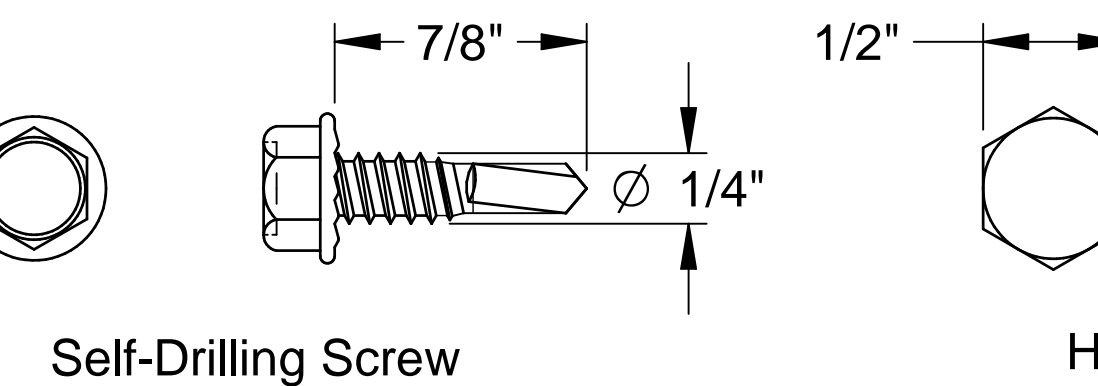
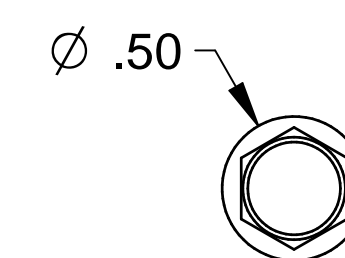
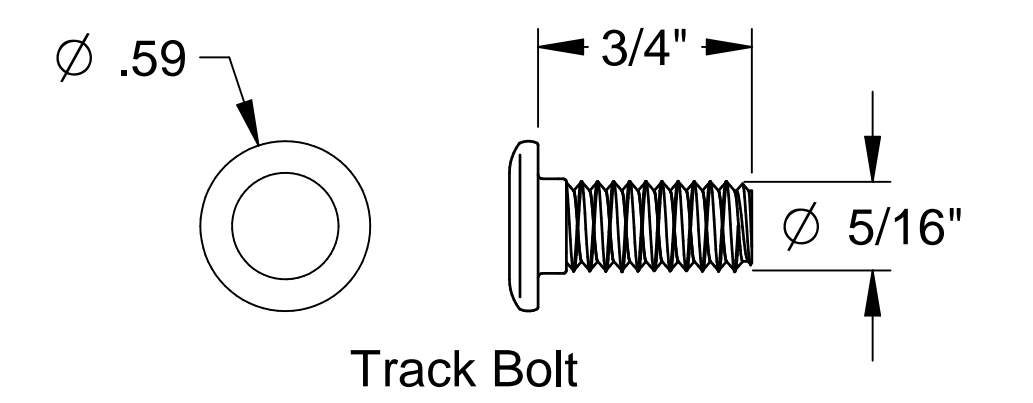
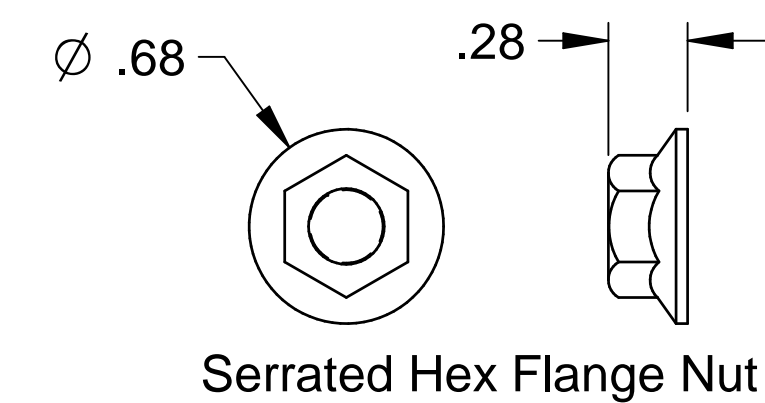
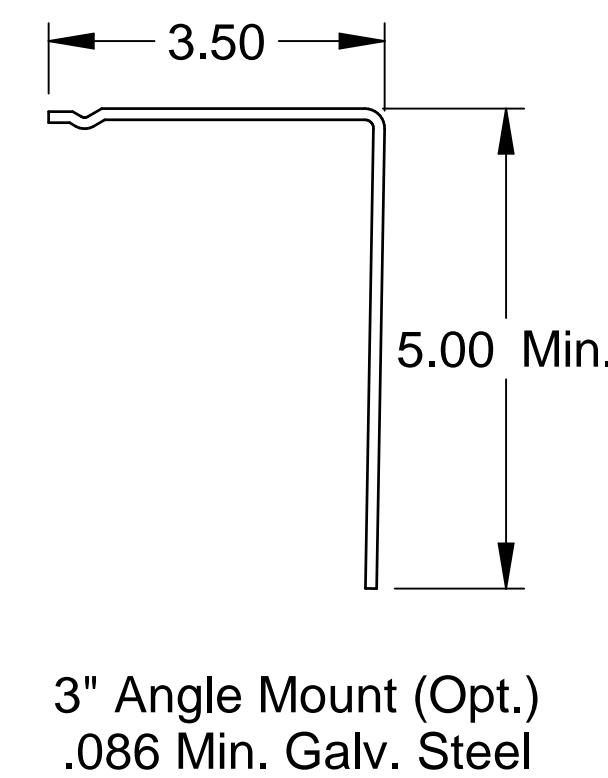
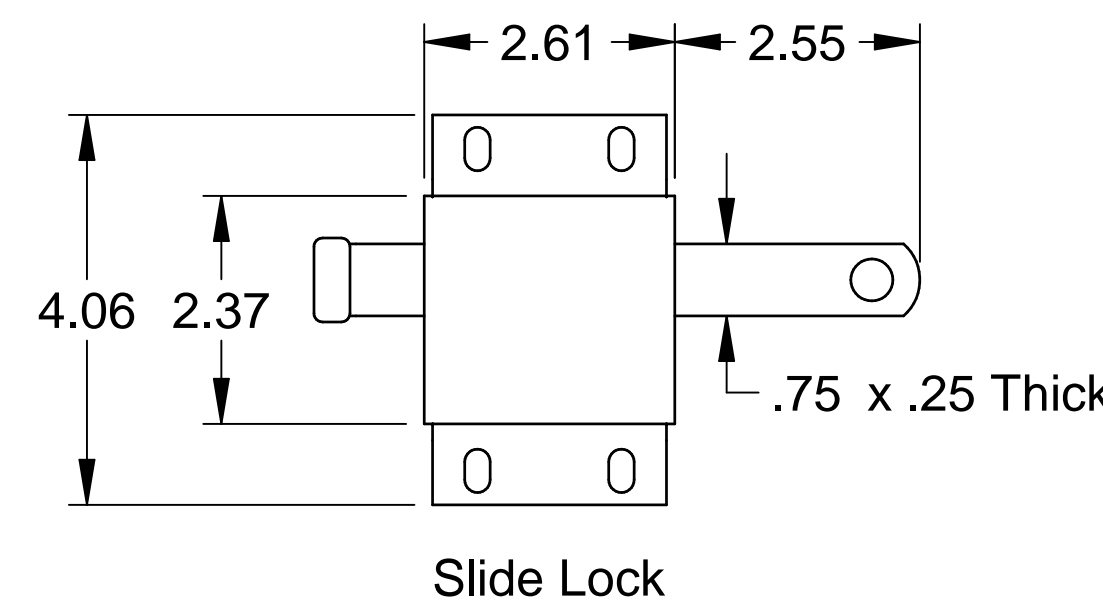
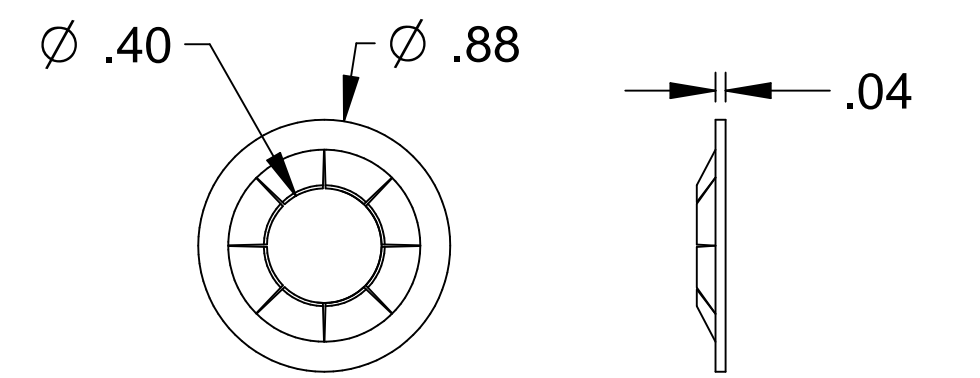
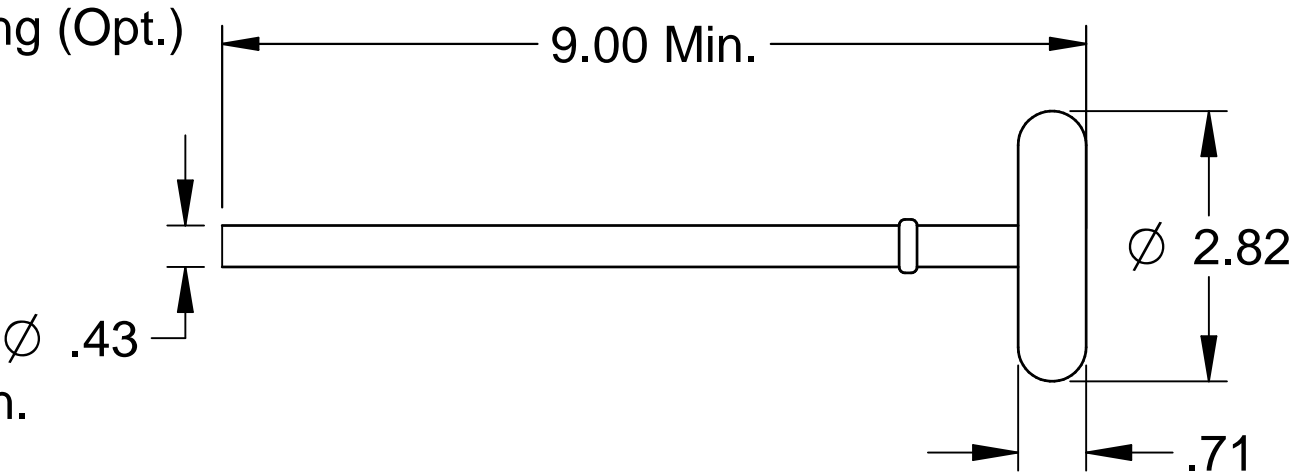
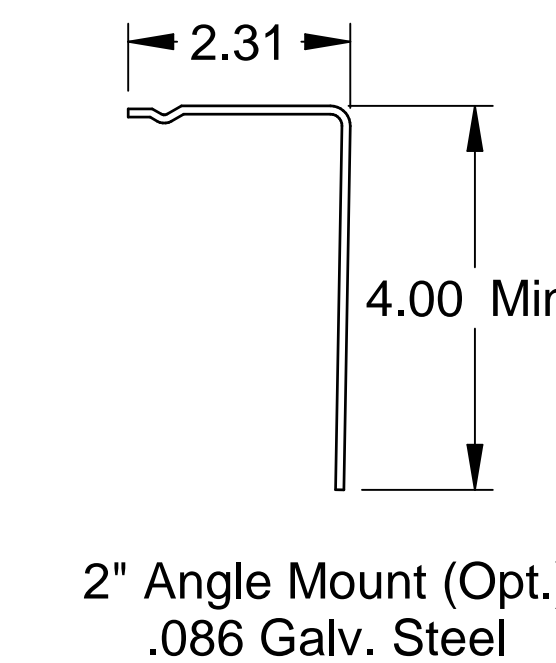
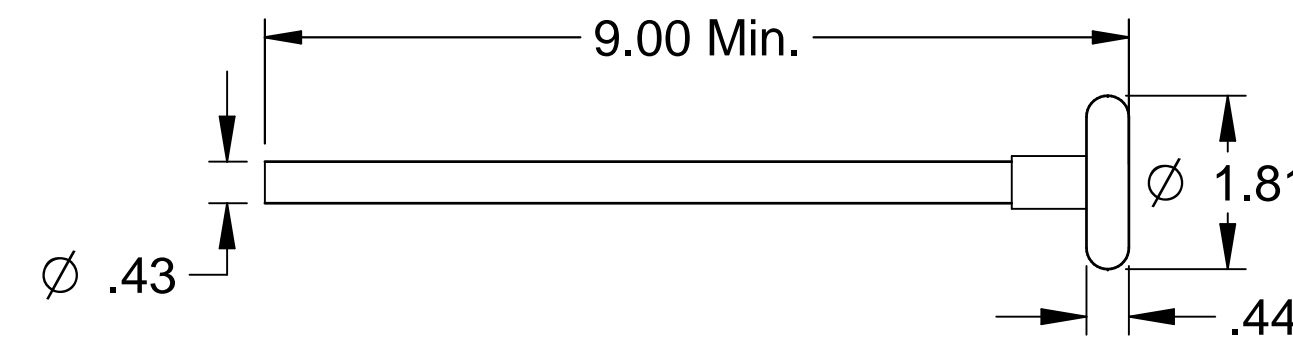
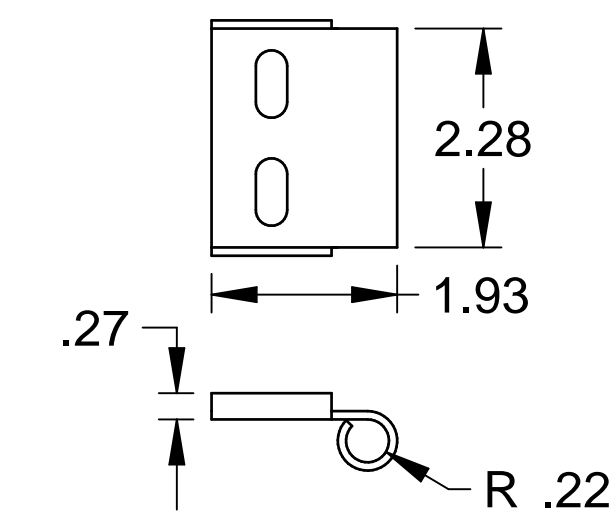
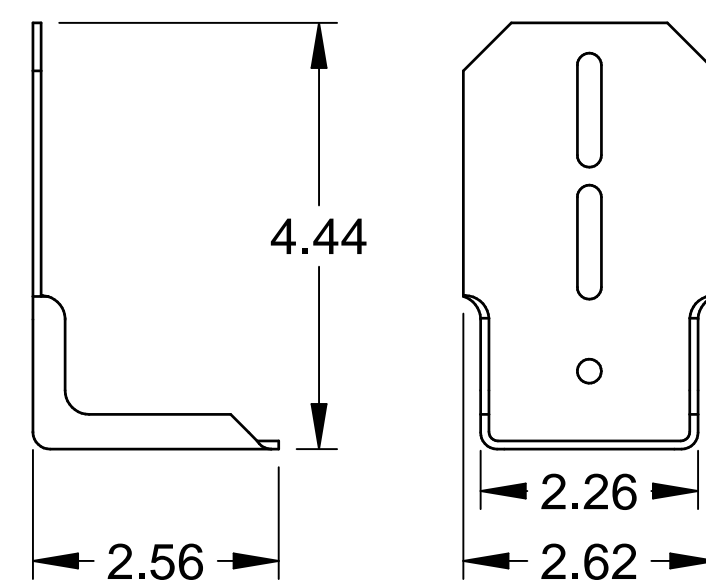
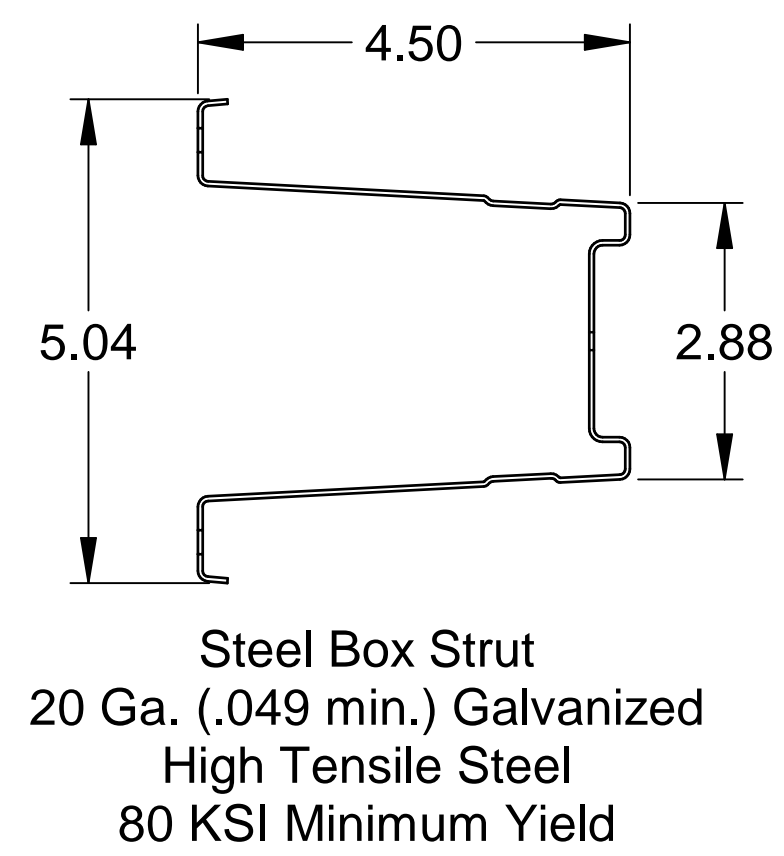
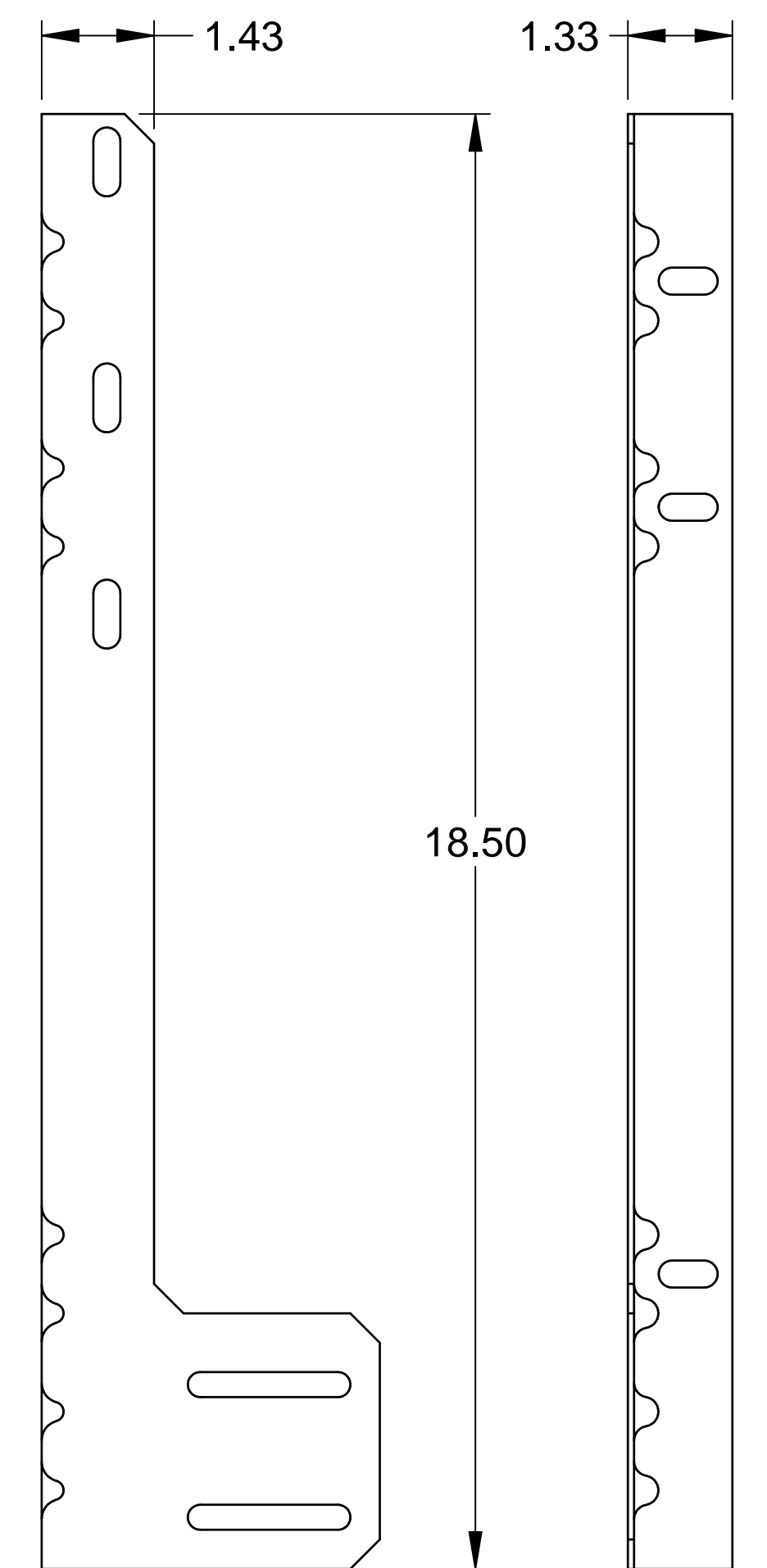
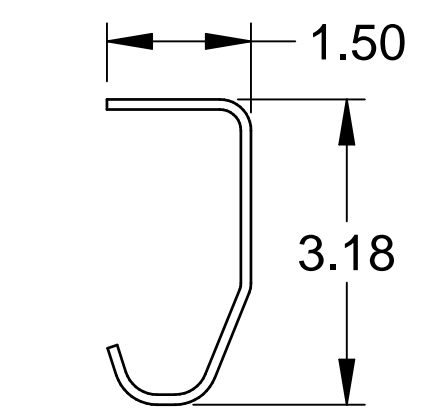
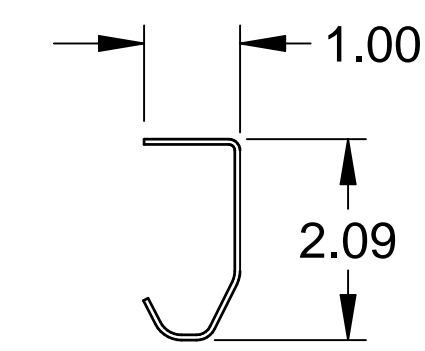
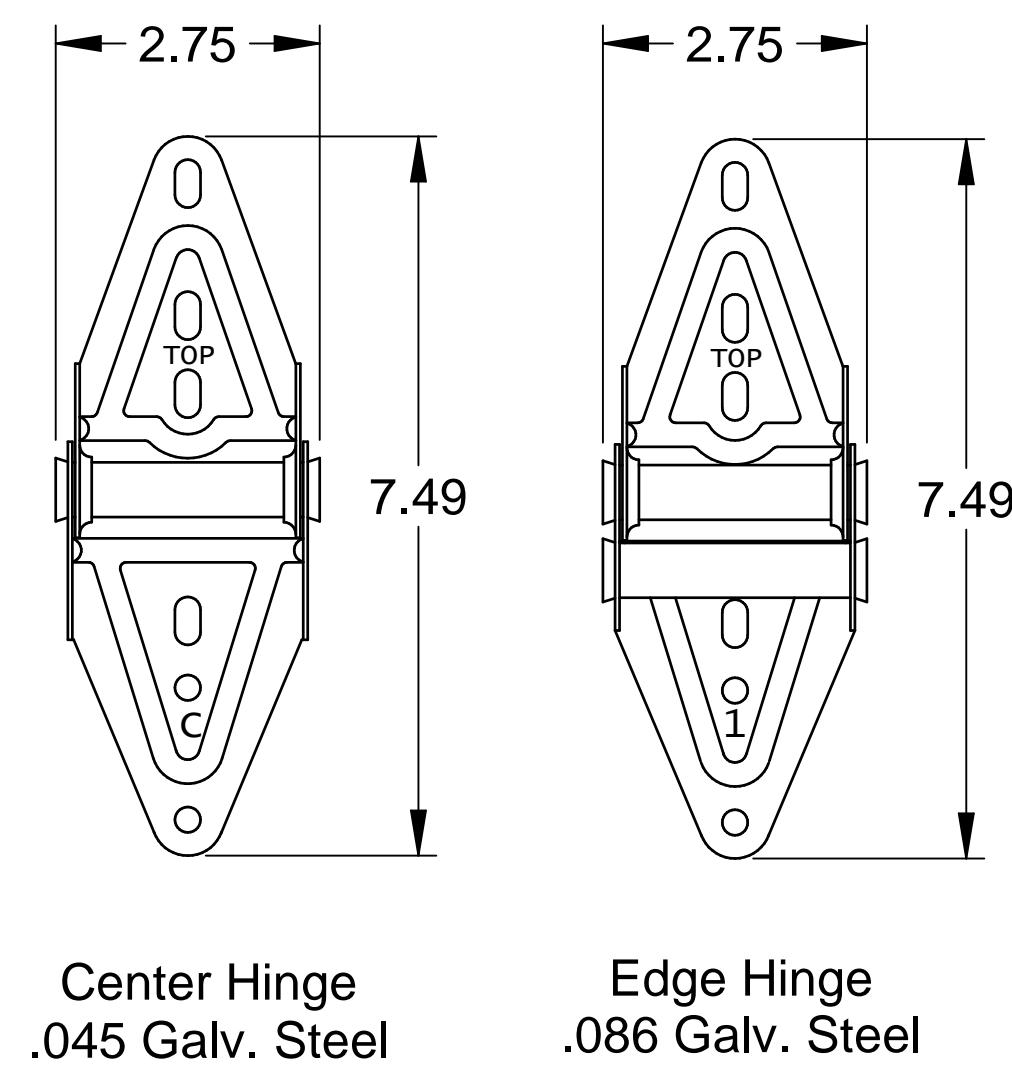
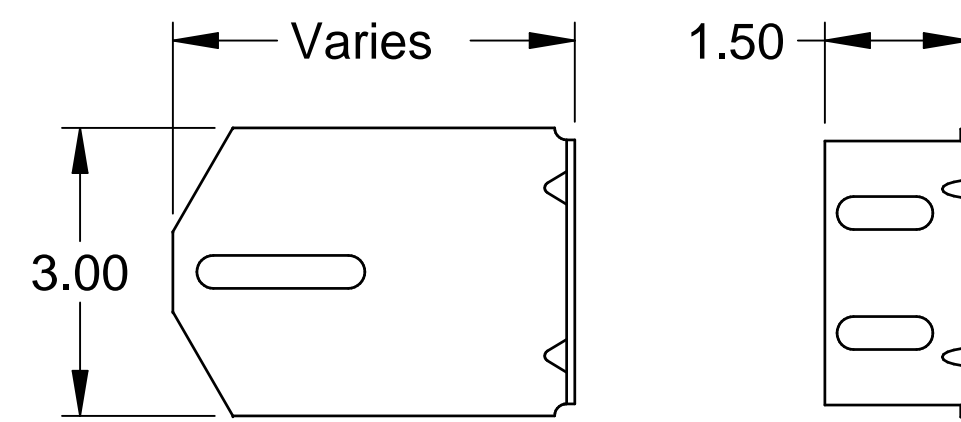
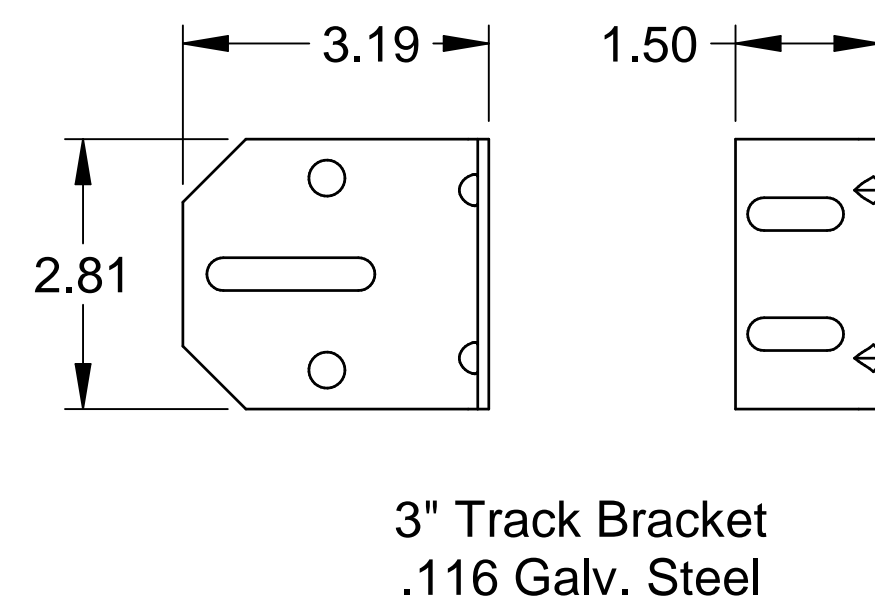
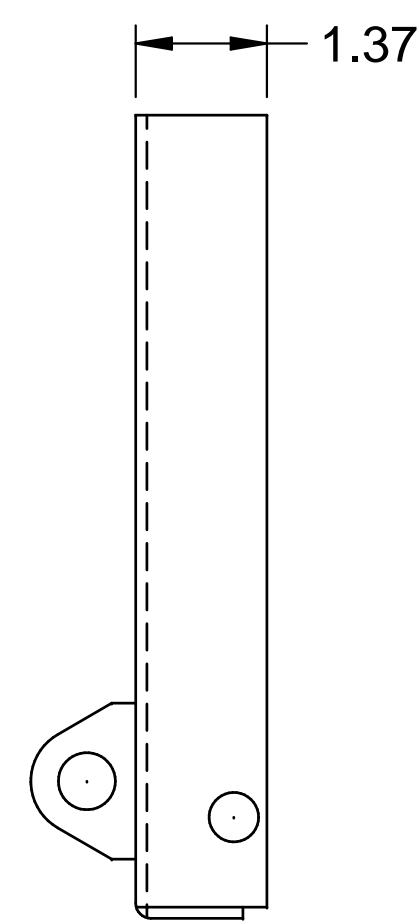
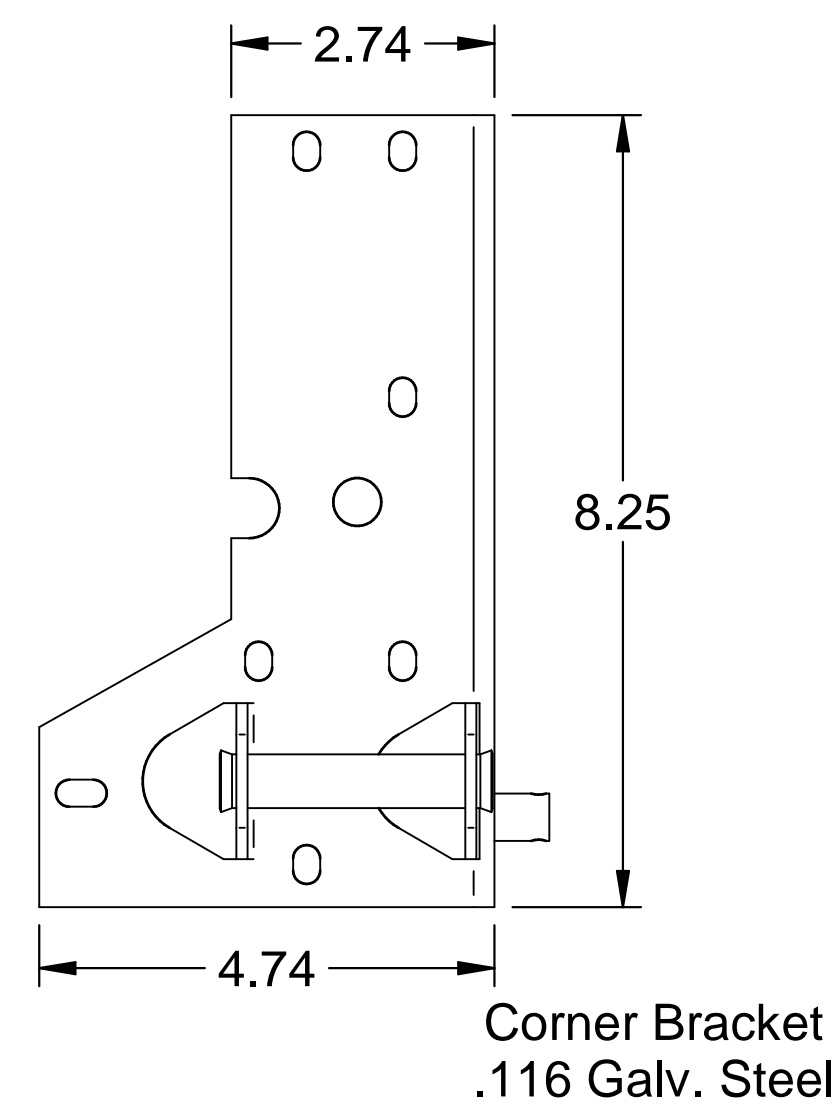
Typical Track Installation  
Angle Mount  
Wood, Steel or Concrete Jamb

Normal headroom track shown, low headroom, lift clearance and vertical lift track available.



Scott A. Brown, P.E. Lic. No. 65940  
Willett, Hofmann & Associates, Inc.  
809 E. 2nd Street, Dixon, IL 61021  
FBPE CA Lic. No. 35415  
Structural Adequacy for Wind Load

Scale: None	<p>1101 East River Road Dixon, IL 61021</p>	Title: Spec, Wind Load Raynor EnergyCore Series, Encore Series	
Drawn by: J. Poitras		No. P-3352	Sheet 2
Checked by: R. Frey			Rev A
Date: 07/20/23		ECO: 8838.01	



Scott A. Brown, P.E. Lic. No. 65940  
Willett, Hofmann & Associates, Inc.  
809 E. 2nd Street, Dixon, IL 61021  
FBPE CA Lic. No. 35415  
Structural Adequacy for Wind Load

Scale: None
Drawn by: J. Poitras
Checked by: R. Frey
Date: 07/20/23
ECO: 8838.01



1101 East River Road  
Dixon, IL 61021

Title: Spec, Wind Load  
Raynor EnergyCore Series,  
Encore Series

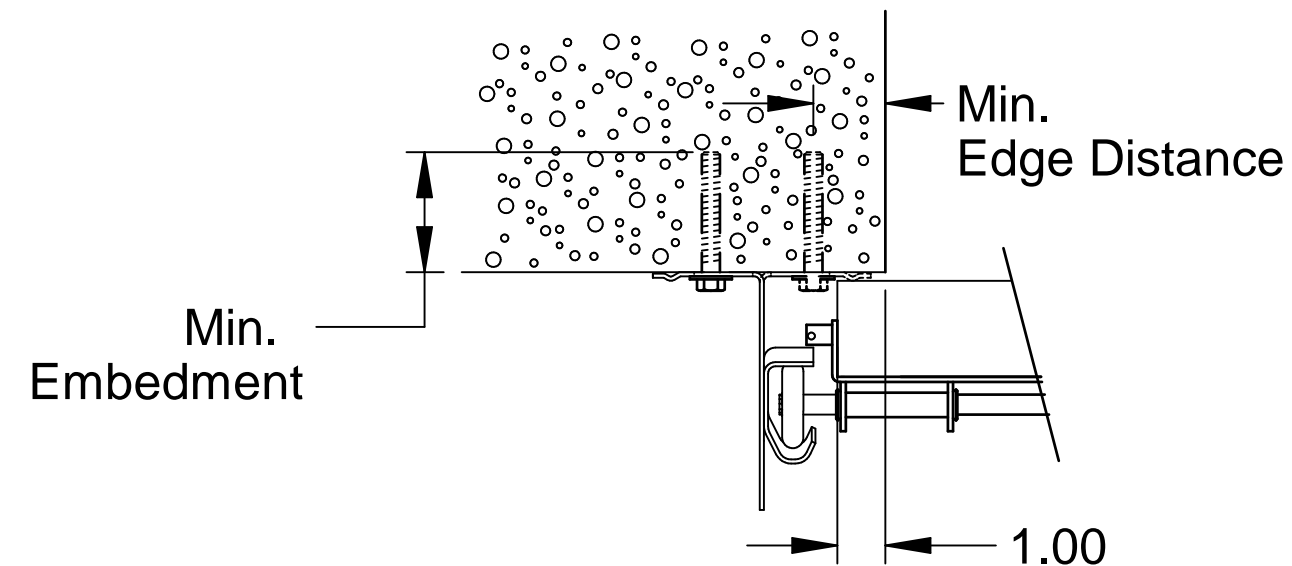
No. P-3352

Sheet 3

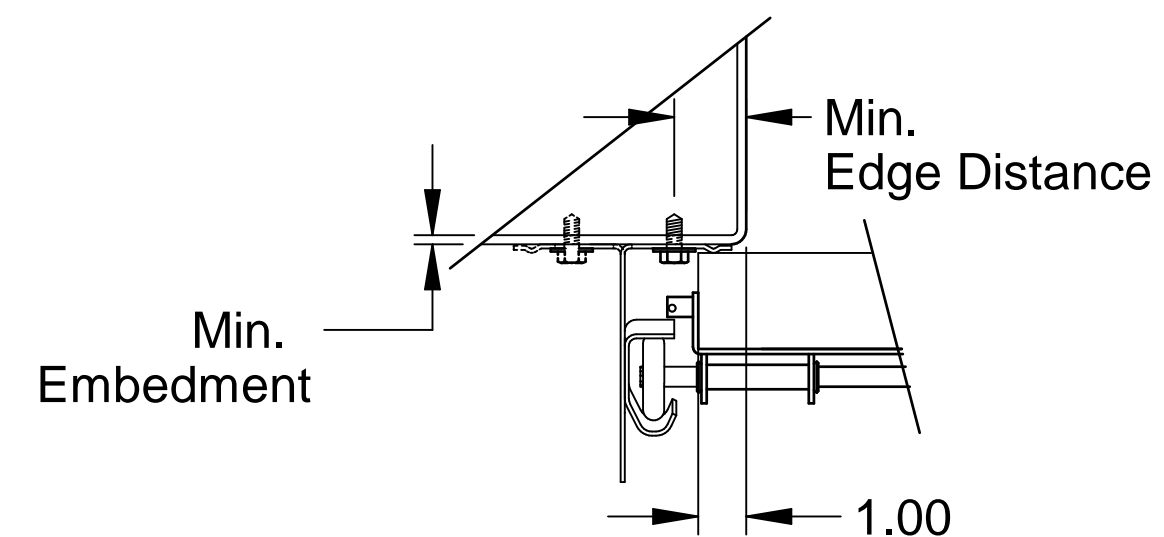
Rev A

Angle Mount					
Jamb Type	Fastener Type	Minimum Embedment (in.)	Minimum Edge Distance (in.)	Maximum on Center Spacing (in.)	Allowable Tension Load (lbs.)
2500 PSI Min. Concrete	3/8" ITW Trubolt	2-1/2"	2-1/2"	18"	893
	1/4" Tapcon+ (Plus) with 1-1/8" OD Washer	2"	1-5/8"	18"	687
	1/4" x 2-5/8" Screw-Bolt+ with 9/16" OD Washer	2-1/2"	1-1/2"	18"	651
Steel	5/16" x 1" SAE J78, Min. AISI 1022 with 5/16" Washer	3/16"	1-1/2"	36"	971
Wood	5/16" x 1-3/4" Lag with 5/16" Washer	1-1/2"	1-1/2"	12"	352
Grout Filled CMU Block	3/8" Simpson Titen HD	2-3/4"	4"	18"	480

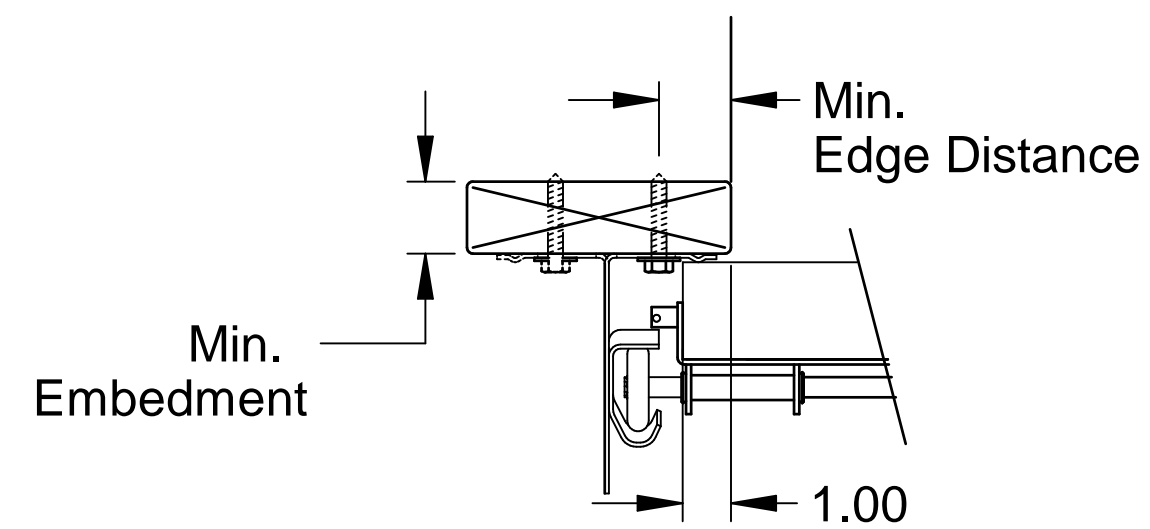
Alternate fasteners may be used if approved by a registered Professional Engineer.



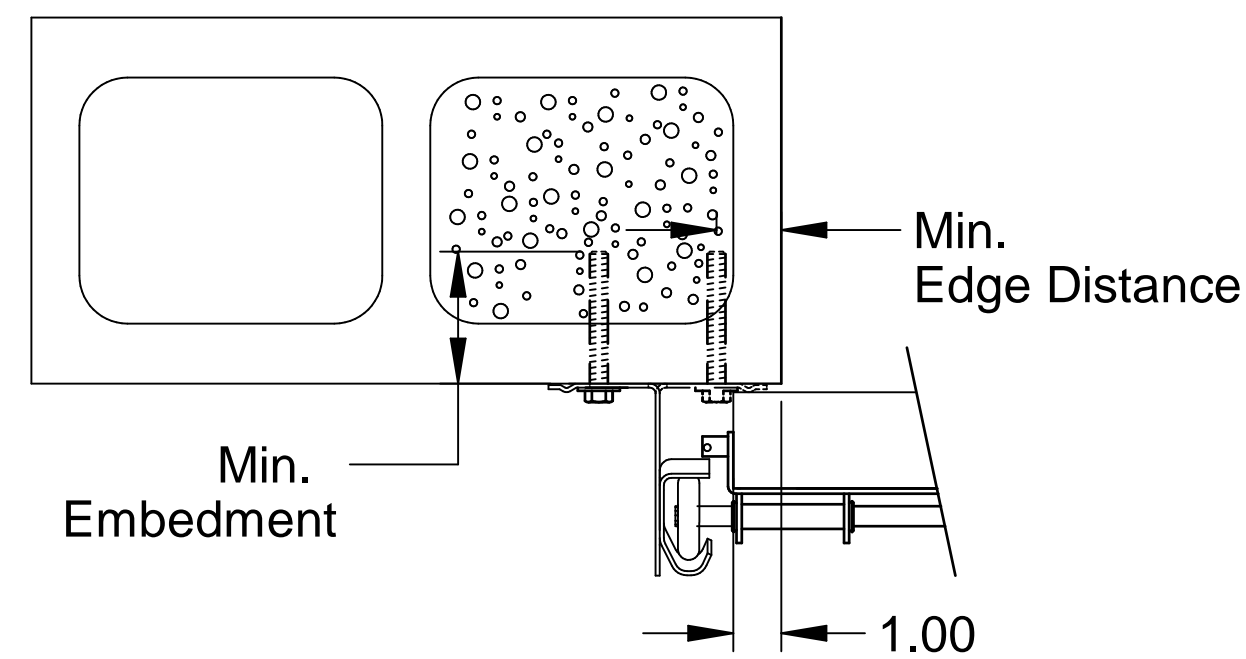
**Track Assembly Attachment to 2500 PSI Min. Concrete**  
 2" Angle mount turned-out standard (solid)  
 2" Angle mount turned-in optional (dashed)  
 3" Angle mount available



**Track Assembly Attachment to 3/16" Min. Steel Jamb**  
 2" Angle mount turned-out standard (solid)  
 2" Angle mount turned-in optional (dashed)  
 3" Angle mount available




**Track Assembly Attachment to Wood Jamb**  
 2" Angle mount turned-out standard (solid)  
 2" Angle mount turned-in optional (dashed)  
 3" Angle mount available



**Track Assembly Attachment to Grout Filled CMU Block**  
 2" Angle mount turned-out standard (solid)  
 2" Angle mount turned-in optional (dashed)  
 3" Angle mount available



Scott A. Brown, P.E. Lic. No. 65940  
 Willett, Hofmann & Associates, Inc.  
 809 E. 2nd Street, Dixon, IL 61021  
 FBPE CA Lic. No. 35415  
 Structural Adequacy for Wind Load

Scale: None	 1101 East River Road Dixon, IL 61021	Title: Spec, Wind Load Raynor EnergyCore Series, Encore Series	
Drawn by: J. Poitras		No. P-3352	Sheet 4
Checked by: R. Frey			Rev A
Date: 07/20/23		ECO: 8838.01	