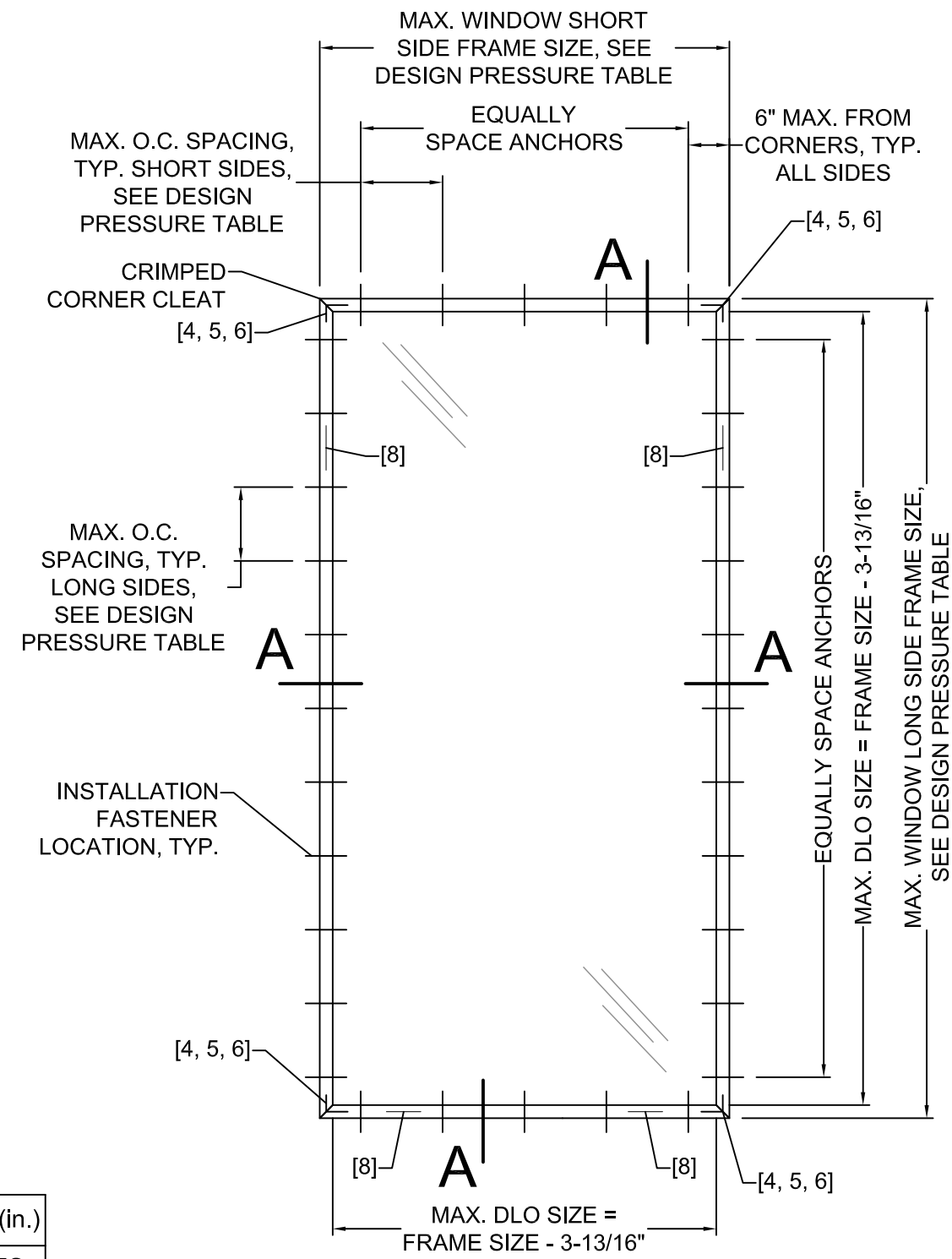


GENERAL NOTES

1. THE PRODUCT SHOWN HEREIN CONSTRUCTED FROM LUXVIEW THERMALLY BROKEN ALUMINUM FRAMES HAS BEEN TESTED TO TAS201/202/203-94, AND MEETS THE REQUIREMENTS OF THE FLORIDA BUILDING CODE, 8TH EDITION (2023), INCLUDING THE HIGH VELOCITY HURRICANE ZONE.
2. THIS PRODUCT IS LARGE AND SMALL MISSILE IMPACT RESISTANT AND DOES NOT REQUIRE THE USE OF IMPACT PROTECTIVE DEVICES (SHUTTERS) IN WINDBORNE DEBRIS REGIONS.
3. THE DESIGN PRESSURES INDICATED IN THIS DRAWING ARE AS LIMITED BY ASTM E-1300 GLASS TABLES, AND TESTED WATER, STRUCTURAL, AND CYCLIC PRESSURES.
4. THIS DOCUMENT ADDRESSES PRODUCT ANCHORAGE TO ACHIEVE THE INDICATED DESIGN PRESSURES AT THE INDICATED SIZES, IN THE CONFIGURATION SHOWN IN THE ELEVATIONS. INSTALL PRODUCTS WITH MAXIMUM SHIM GAP, MINIMUM EDGE DISTANCE AND EMBEDMENT, AND WITH FASTENER TYPE AS SHOWN IN THE DETAILS AND AS INDICATED IN TABLE 1. FOR FULL PRODUCT CONSTRUCTION DETAILS SEE INTERTEK TEST REPORT N9351.01-550-44-r0.
6. THE 4/3 ALLOWABLE STRESS INCREASE FACTOR (SHORT-TERM INCREASE FACTOR) HAS NOT BEEN USED IN THE ANCHOR ANALYSIS FOR THIS SYSTEM. THE 1.6 Cd FACTOR WAS USED IN THE ANALYSIS OF ANCHORAGE INTO WOOD SUBSTRATE.
7. THE OPENING SUBSTRATE MATERIALS (FRAMING, MASONRY, BUCKS) AND ATTACHMENT OF BUCKS TO THE SUBSTRATE ARE BY OTHERS AND SHALL BE VERIFIED BY THE ARCHITECT OR ENGINEER OF RECORD OR AS APPROVED BY THE AUTHORITY HAVING JURISDICTION (AHJ). BUCKING, OPENINGS, & BUCKING FASTENERS MUST BE PROPERLY DESIGNED & INSTALLED BY OTHERS IN ACCORDANCE WITH THE FBC TO TRANSFER SUPERIMPOSED LOADS TO THE STRUCTURE. WITH MASONRY OPENINGS, WOOD BUCKS ARE OPTIONAL.
8. DISSIMILAR MATERIALS THAT COME INTO CONTACT SHALL BE COATED OR OTHERWISE PROTECTED TO PREVENT GALVANIC REACTIONS. WOOD BUCKS, IF USED, SHALL BE PRESSURE TREATED, WITH EITHER A TREATMENT OR COATING COMPATIBLE WITH THIS PRODUCT.
9. ALL ANCHORS USED SHALL BE OF A MATERIAL OR HAVE A COATING COMPATIBLE WITH THE PRESSURE TREATED WOOD BUCKS AND ALL OTHER WINDOW MATERIALS.
10. ALL HARDWARE & FASTENERS SHALL BE IN ACCORDANCE WITH THESE DRAWINGS, OR AS APPROVED, SIGNED, AND SEALED BY A FLORIDA REGISTERED PROFESSIONAL ENGINEER ON A SITE-SPECIFIC BASIS.
11. SEALING AND FLASHING STRATEGIES FOR OVERALL WATER INFILTRATION RESISTANCE OF THE INSTALLED PRODUCT SHALL BE THE RESPONSIBILITY OF OTHERS AND ARE NOT ADDRESSED BY THIS DOCUMENT.
12. FOR ADDITIONAL REQUIREMENTS SEE GENERAL ANCHOR NOTES, SHEET 2.
13. WIDTH AND HEIGHT AS SHOWN IN THE ELEVATION MAY BE TRANSPOSED; IF SO THEN 12" MAX. ON CENTER ANCHOR SPACING APPLIES TO THE SHORTER LENGTH SIDE AND THE 10-13/16" ANCHOR SPACING APPLIES TO THE LONGER SIDE.

LUXVIEW FIX 70 WINDOW

NOTE: WIDTH AND HEIGHT MAY BE SWAPPED, SEE NOTE 13 THIS SHEET

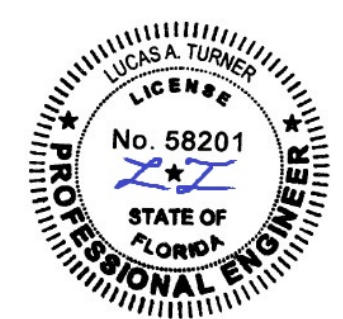


TYP. ELEVATION
SEE DETAILS SHEET 2

DESIGN PRESSURE TABLE

DESIGN PRESSURE RATING, PSF	IMPACT RATING	MAX. WINDOW LONG SIDE (in.)	MAX. WINDOW SHORT SIDE (in.)	MAX. ANCHOR O.C. SPACING (in.)	
				LONG SIDES	SHORT SIDES
+60 / -75	LARGE AND SMALL MISSILE IMPACT	120	60	10-13/16	12
		109-1/16	66	9-3/4	10-5/8
		100	72	8-7/8	9-5/8
		92-9/32	78	8-1/4	8-3/4
		85-27/32	85-27/32	8	8

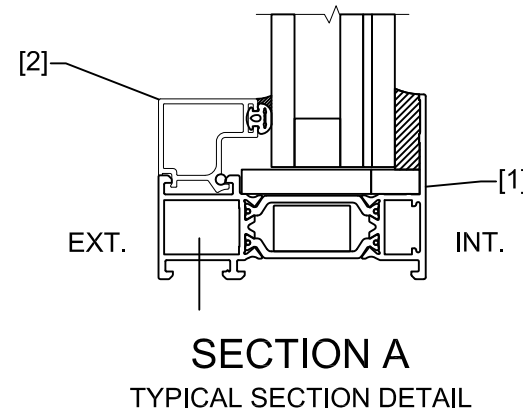
NOTE: FOR WINDOW SIZES BETWEEN THOSE IN TABLE, USE SMALLER ANCHOR SPACING



10/23/2023
Lucas A. Turner, P.E.
FL PE #58201
Turner Engineering & Consulting, Inc.
2428 Old Natchez Trc Trl
Camden, TN 38320
Ph. 941-380-1574

LUXVIEW		12605 Old Hickory Blvd Ste. 100 Antioch, TN 37013 615-200-7843	
Sheet Title: NOTES, ELEVATION		Date: 6/20/2023	
LUXVIEW PROPRIETARY COPYRIGHT 2023 LUXVIEW LLC	Dwg: FPA-FIX70 Sheet: 1 of 2	Rev: A Scale: NTS	

Tag	Part #	Part Name	Material Type
1	LUX-FX70-0001	Fix 70 Slim Frame	6063-T5 Alum w/ Polyamide Strut
2	LUX-GZB-0001	Glazing Bead	6063-T5 Alum
3	LUX-GKT-0001	External Gasket	EPDM
4	LUX-CLT-0001	Alignment Cleat	Aluminum
5	LUX-CLT-0002	Primary Cleat	Aluminum
6	LUX-CLT-0003	Secondary Cleat	Aluminum
7	MSN399	Sikasil WT-66 Power Cure	Silane-Modified Polymer
8	LUX-PRK-0001	0.125 x 1.75 x 4.00 Alum Wedge	Aluminum
9	-	Installation Anchor, See Table 1	Carbon Steel
10	DOW795	Silicone	Silicone
11	DOW995	Silicone	Silicone
12	LUX-PRK-0002	Setting Blocks, 2411.3.3.1 Compliant	Plastic
13	NOMSRSP38B300	3/8" Open Cell Backer Rod	Open Cell Foam



- GENERAL ANCHOR NOTES:**
1. INSTALL ONE ANCHOR AS INDICATED IN DETAIL ON SHEET 2 AT EACH LOCATION SHOWN IN THE ELEVATION ON SHEET 1.
 2. INSTALL SHIMS AT EACH ANCHOR LOCATION WHERE A GAP OF 1/16" OR GREATER EXISTS BETWEEN PRODUCT FRAME AND SUBSTRATE.
 3. SHIMS SHALL BE LOAD-BEARING (PLASTIC OR METALLIC) AND CAPABLE OF TRANSFERRING LOADS TO SUBSTRATE.
 4. SPECIFIED ANCHOR EMBEDMENT TO SUBSTRATE SHALL BE BEYOND WALL FINISH OR STUCCO, BY OTHERS. FOR ATTACHMENT TO METAL SUBSTRATES ENSURE FULL THREAD ENGAGEMENT THROUGH METAL WALL WITH MIN. 3 THREADS BEYOND.
 5. FOR MASONRY WITH WOOD BUCKS LESS THAN 1-1/2" THICK, EMBEDMENT SHALL BE BEYOND WOOD BUCKS AND INTO MASONRY. WOOD BUCKS ARE OPTIONAL WITH MASONRY INSTALLATIONS WHERE MASONRY EDGE DISTANCE CONDITIONS ARE MET WITH NO BUCKS. WOOD BUCKS 1-1/2" THICK OR GREATER SHALL HAVE EMBEDMENT INTO THE WOOD BUCKS.
 6. ENSURE 4" MIN. ON-CENTER SPACING BETWEEN ANY TWO INSTALLATION ANCHORS.

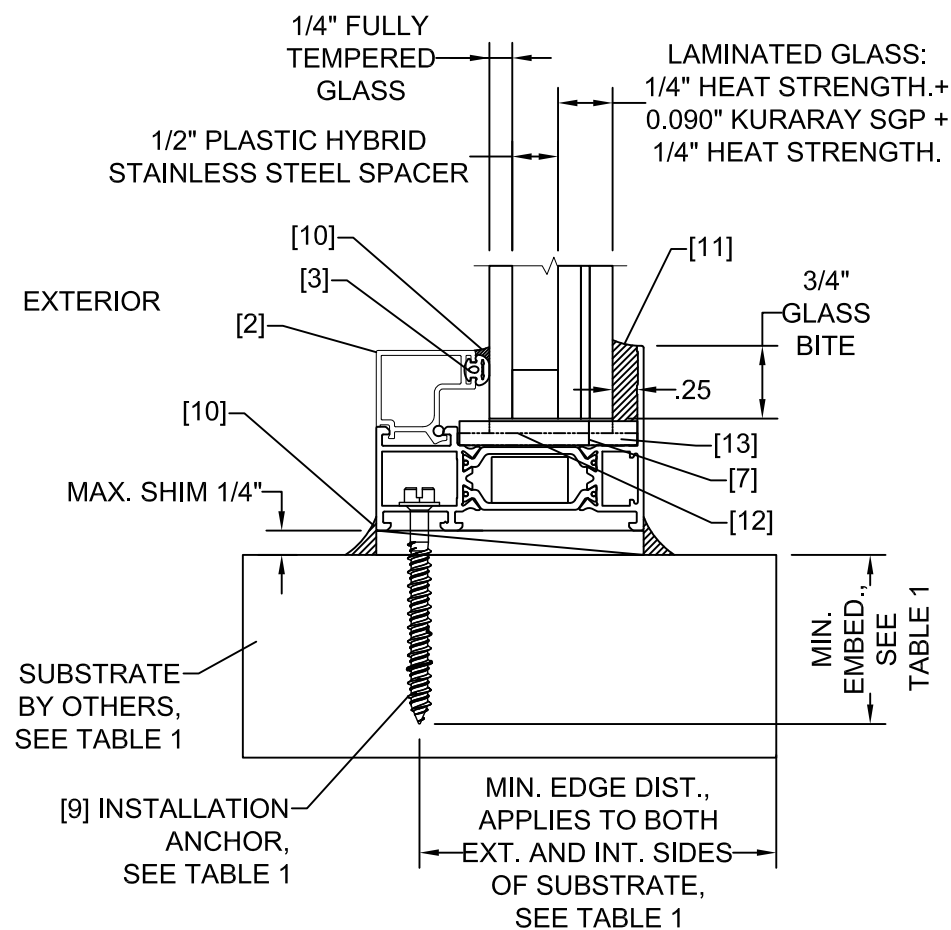
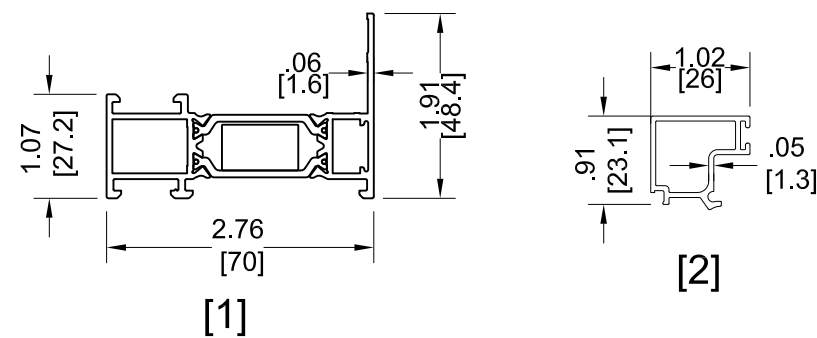


TABLE 1: INSTALLATION ANCHOR REQUIREMENTS TABLE
NOTE: ALL ANCHORS ARE PAN HEAD OR HEX WASHER HEAD

SUBSTRATE TYPE	ANCHOR TYPE	MIN. EMBED.	MIN. EDGE DISTANCE
CONCRETE (3.05 KSI MIN)	1/4" DEWALT ULTRACON+	1-3/8"	1"
GROUT-FILLED CMU (ASTM C-90)	1/4" DEWALT ULTRACON+	1-3/4"	1"
HOLLOW CMU (ASTM C-90)	1/4" DEWALT ULTRACON+	1-1/4"	2-1/2"
2X MIN. SPRUCE-PINE-FIR WOOD (G=0.42 MIN.)	1/4" DEWALT ULTRACON+	1-3/8"	1"
16 GAUGE (0.060") MIN. STEEL STUD, 33KSI YIELD MIN., OR 1/8" ALUM. 6063-T5 MIN.	1/4"-14 HILTI KWIK-FLEX OR ITW TEKS SELF-DRILLING SCREW	FULL + 3 THREADS	1/2"

TYPICAL INSTALLATION AND GLAZING DETAIL

LUXVIEW 12605 Old Hickory Blvd Ste. 100
Antioch, TN 37013
615-200-7843

Sheet Title: **BOM, DETAILS, ANCHORAGE, GLAZING**
Date: 6/20/2023

LUXVIEW PROPRIETARY
COPYRIGHT 2023 LUXVIEW LLC

Dwg: FPA-FIX70
Sheet: 2 of 2

Rev: A
Scale: NTS

10/23/2023
Lucas A. Turner, P.E.
FL PE #58201
Turner Engineering & Consulting, Inc.
2428 Old Natchez Trc Trl
Camden, TN 38320
Ph. 941-380-1574