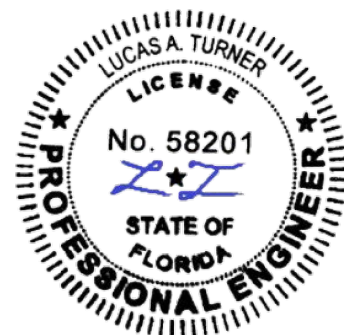
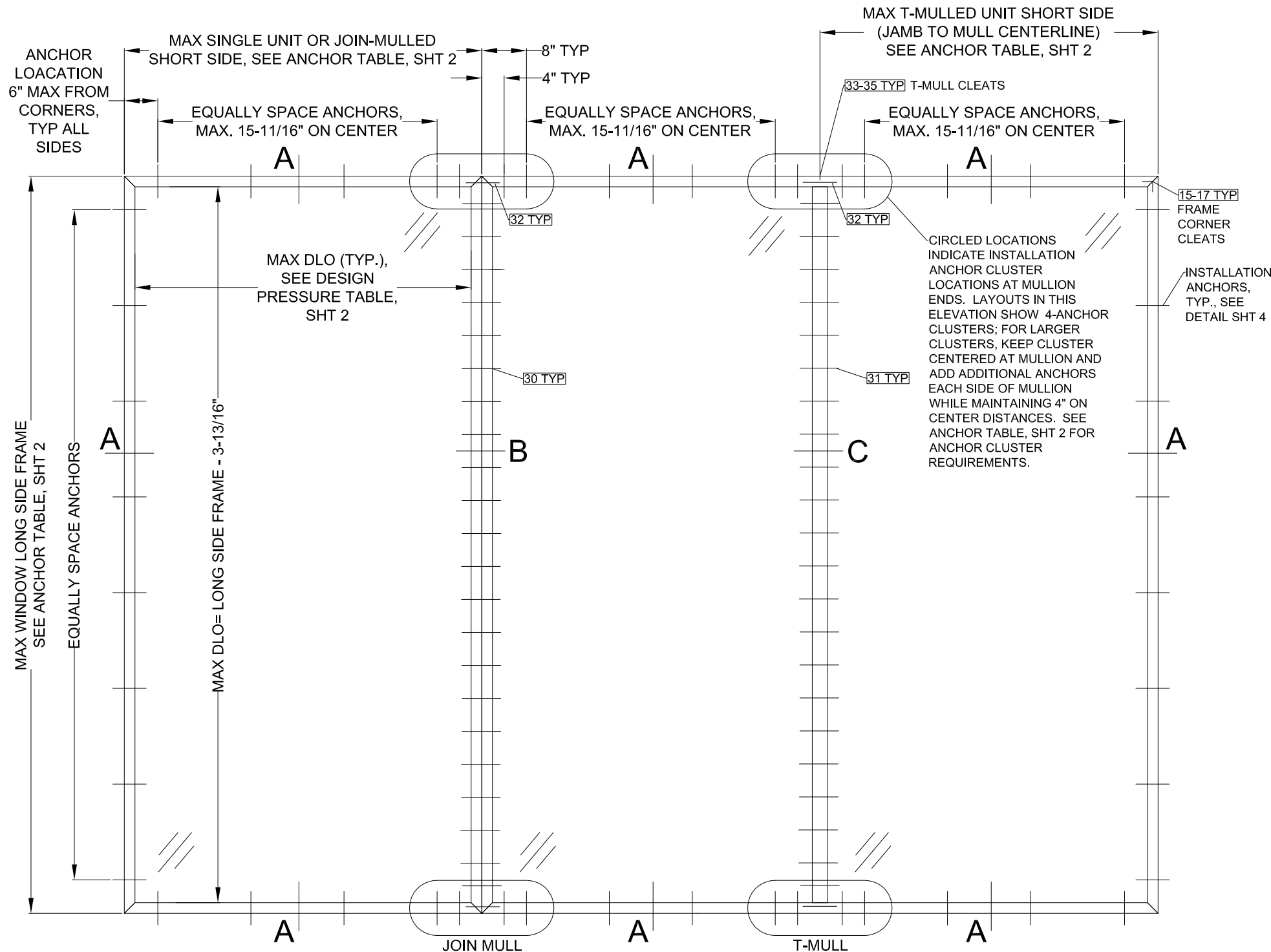


GENERAL NOTES

1. THE PRODUCT SHOWN HEREIN CONSTRUCTED FROM LUXVIEW THERMALLY BROKEN ALUMINUM FRAMES HAS BEEN TESTED TO TAS201/202/203-94, AND MEETS THE REQUIREMENTS OF THE FLORIDA BUILDING CODE, 8TH EDITION (2023), INCLUDING THE HIGH VELOCITY HURRICANE ZONE.
2. THIS PRODUCT IS LARGE AND SMALL MISSILE IMPACT RESISTANT AND DOES NOT REQUIRE THE USE OF IMPACT PROTECTIVE DEVICES (SHUTTERS) IN WINDBORNE DEBRIS REGIONS.
3. THE DESIGN PRESSURES INDICATED IN THIS DRAWING ARE AS LIMITED BY ASTM E-1300 GLASS TABLES, AND TESTED WATER, STRUCTURAL, AND CYCLIC PRESSURES.
4. THIS DOCUMENT ADDRESSES PRODUCT ANCHORAGE TO ACHIEVE THE INDICATED DESIGN PRESSURES AT THE INDICATED SIZES, IN THE CONFIGURATION SHOWN IN THE ELEVATIONS. INSTALL PRODUCTS WITH MAXIMUM SHIM GAP, MINIMUM EDGE DISTANCE AND EMBEDMENT, AND WITH FASTENER TYPE AS SHOWN AS INDICATED IN TABLE 1.
5. THE 4/3 ALLOWABLE STRESS INCREASE FACTOR (SHORT-TERM INCREASE FACTOR) HAS NOT BEEN USED IN THE ANCHOR ANALYSIS FOR THIS SYSTEM. THE 1.6 Cd FACTOR WAS USED IN THE ANALYSIS OF ANCHORAGE INTO WOOD SUBSTRATE.
6. THE OPENING SUBSTRATE MATERIALS (FRAMING, MASONRY, BUCKS) AND ATTACHMENT OF BUCKS TO THE SUBSTRATE ARE BY OTHERS AND SHALL BE VERIFIED BY THE ARCHITECT OR ENGINEER OF RECORD OR AS APPROVED BY THE AUTHORITY HAVING JURISDICTION (AHJ). BUCKING, OPENINGS, & BUCKING FASTENERS MUST BE PROPERLY DESIGNED & INSTALLED BY OTHERS IN ACCORDANCE WITH THE FBC TO TRANSFER SUPERIMPOSED LOADS TO THE STRUCTURE. WITH MASONRY OPENINGS, WOOD BUCKS ARE OPTIONAL.
7. DISSIMILAR MATERIALS THAT COME INTO CONTACT SHALL BE COATED OR OTHERWISE PROTECTED TO PREVENT GALVANIC REACTIONS. WOOD BUCKS, IF USED, SHALL BE PRESSURE TREATED, WITH EITHER A TREATMENT OR COATING COMPATIBLE WITH THIS PRODUCT.
8. ALL ANCHORS USED SHALL BE OF A MATERIAL OR HAVE A COATING COMPATIBLE WITH THE PRESSURE TREATED WOOD BUCKS AND ALL OTHER WINDOW MATERIALS.
9. ALL HARDWARE & FASTENERS SHALL BE IN ACCORDANCE WITH THESE DRAWINGS, OR AS APPROVED, SIGNED, AND SEALED BY A FLORIDA REGISTERED PROFESSIONAL ENGINEER ON A SITE-SPECIFIC BASIS.
10. SEALING AND FLASHING STRATEGIES FOR OVERALL WATER INFILTRATION RESISTANCE OF THE INSTALLED PRODUCT SHALL BE THE RESPONSIBILITY OF OTHERS AND ARE NOT ADDRESSED BY THIS DOCUMENT.
11. FOR ADDITIONAL REQUIREMENTS SEE GENERAL ANCHOR NOTES, SHEET 2.
12. WIDTH AND HEIGHT AS SHOWN IN THE ELEVATION MAY BE TRANSPOSED; IF SO THEN 12" MAX ON CENTER ANCHOR SPACING APPLIES TO THE SHORTER LENGTH SIDE AND THE 10-13/16" ANCHOR SPACING APPLIES TO THE LONGER SIDE.

LUXVIEW FIXED 80i WINDOW WALL



DESIGN PRESSURE

+70/-70

IMPACT RATING

LARGE AND SMALL MISSILE IMPACT

5/9/2024 LUCAS TURNER FL PE 58201
TURNER ENGINEERING & CONSULTING, INC.
2428 OLD NATCHEZ TRACE TRL., CAMDEN, TN, 38320
PH 941-380-1574

Scale:
NOT TO SCALE

Sheet #:
1 OF 5

Drawing Title:

LUXVIEW FIXED 80i WINDOW WALL

Drawing Number:
FPA-FIX80i

Drawn By:
JAB

Reviewed By:
CAC

Revision:
00

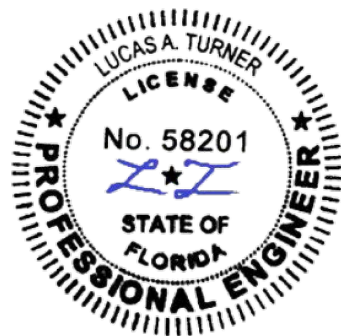
Date:
02MAY2024

LUXVIEW

LuxView Proprietary
Copyright 2024 LuxView LLC

Anchor Table. Design Pressure Rating of all configurations is +/-70 psf (ASD). All dimensions/spacings in Table are in inches.

Short Side Dimensions (See Elevation, Sheet 1)				Anchor IDs A and B, See Table 1		Anchor IDs D, E, and F, See Table 1		Anchor IDs C and G, See Table 1			
Max. Single Unit or Join-Mulled	Max. DLO	Max. T-Mulled Unit, Jamb to Mull Centerline	Max. T-Mulled Unit, Mull C/L to Mull C/L	Max. Long Side / Mull Length	Join and T Mullion Type(s) Allowed (see Sht. 3)	Jamb Anchor Max. On-Center Spacing	Anchor Cluster Qty at Mull Ends	Jamb Anchor Max. On-Center Spacing	Anchor Cluster Qty at Mull Ends	Jamb Anchor Max. On-Center Spacing	
24	20 3/16	23 3/8	22 13/16	36	1, 2, and 3	16 13/16	4	16 13/16	4	16 13/16	
				48	1, 2, and 3		4				
				60	1, 2, and 3		4				
				72	1, 2, and 3		4				
				84	1 and 2		4				
				96	1 and 2		4				
30	26 3/16	29 3/8	28 13/16	36	1, 2, and 3	16 13/16	4	16 13/16	4	16 13/16	
				48	1, 2, and 3		4				
				60	1, 2, and 3		4				
				72	1, 2, and 3		4				
				84	1 and 2		4				
				96	1 and 2		6				
				108	1		6				
				120	1		6				
				132	1		6				
				36	32 3/16		35 3/8		34 13/16		36
48	1, 2, and 3	4									
60	1, 2, and 3	4									
72	1, 2, and 3	4									
84	1 and 2	6									
96	1 and 2	6									
108	1	6									
120	1	N/A									
132	1	N/A									
42	38 3/16	41 3/8	40 13/16			36		1, 2, and 3		16 13/16	4
				48	1, 2, and 3	4					
				60	1, 2, and 3	4					
				72	1, 2, and 3	6					
				84	1 and 2	6					
				96	1 and 2	6					
				108	1	8					
				120	1	8					
				132	1	8					
				48	44 3/16	47 3/8	46 13/16	36	1, 2, and 3		14 9/16
48	1, 2, and 3	4									
60	1, 2, and 3	6									
72	1, 2, and 3	6									
84	1 and 2	6									
96	1 and 2	8									
108	1	8									
120	1	10									
132	1	10									
54	50 3/16	53 3/8	52 13/16					36	1, 2, and 3	12 15/16	
				48	1, 2, and 3	4					
				60	1, 2, and 3	6					
				72	1, 2, and 3	6					
				84	1 and 2	8					
				96	1 and 2	8					
				108	1	10					
				120	1	10					
				132	1	12					
				61 1/16	57 1/4	60 7/16	59 7/8	36	1, 2, and 3		11 7/16
48	1, 2, and 3	6									
60	1, 2, and 3	6									
72	1, 2, and 3	8									
84	1 and 2	8									
96	1 and 2	10									
108	1	10									
120	1	12									
132	1	12									
64 (SINGLE UNIT NON-MULLED ONLY)	60 3/16	N/A	N/A					132	N/A	N/A	



5/9/2024 LUCAS TURNER FL PE 58201
 TURNER ENGINEERING & CONSULTING, INC.
 2428 OLD NATCHEZ TRACE TRL., CAMDEN, TN, 38320
 PH 941-380-1574

Scale:
 NOT TO SCALE

Sheet #:
 2 OF 5

Drawing Title:
LUXVIEW FIXED 80i WINDOW WALL

Drawing Number:
 FPA-FIX80i

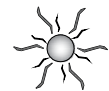
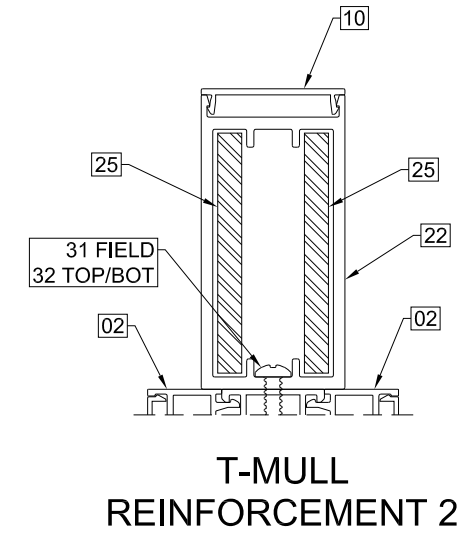
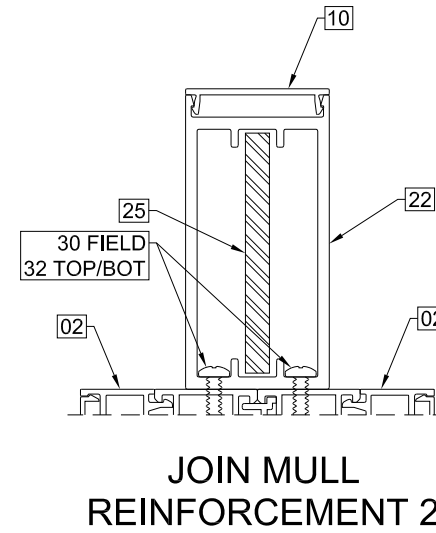
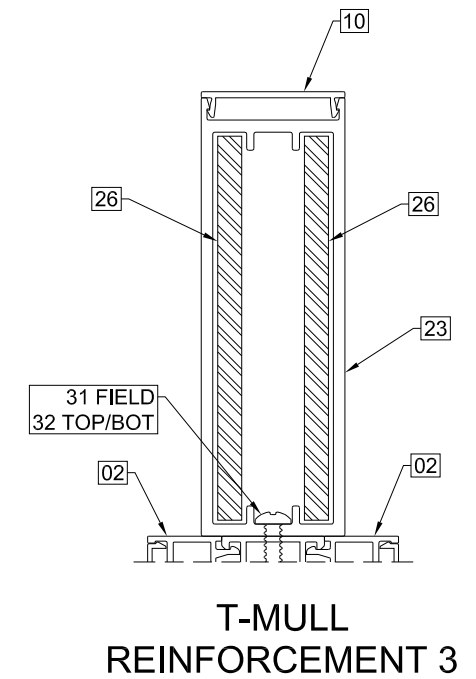
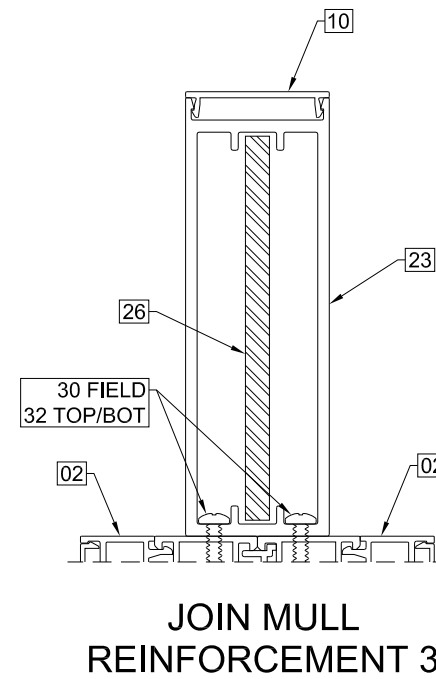
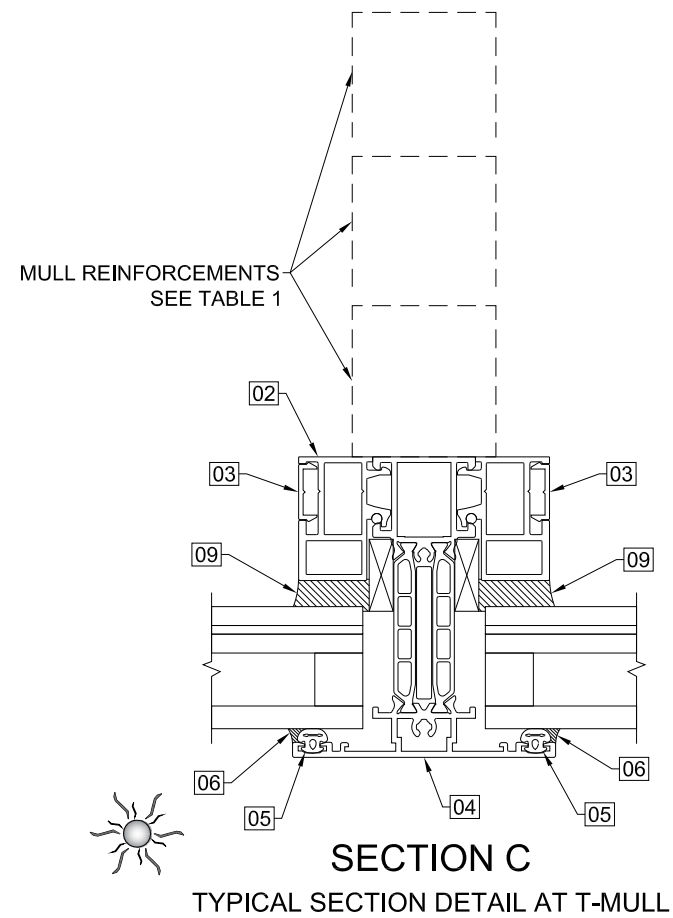
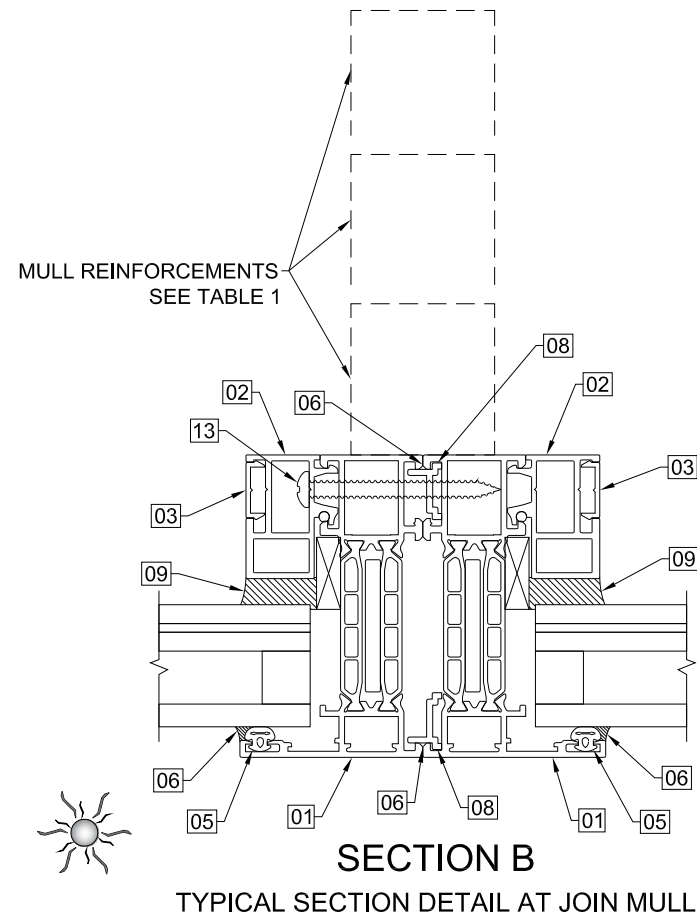
Revision:
 00

Drawn By:
 JAB

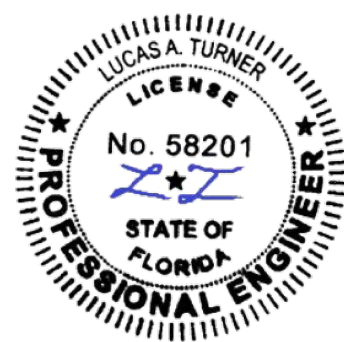
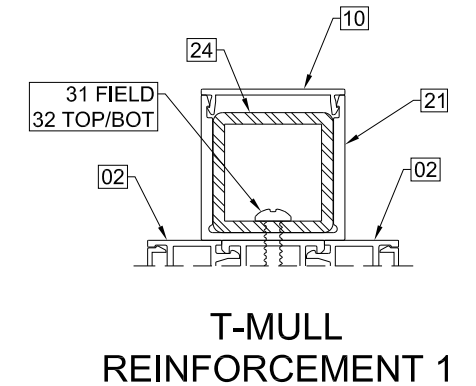
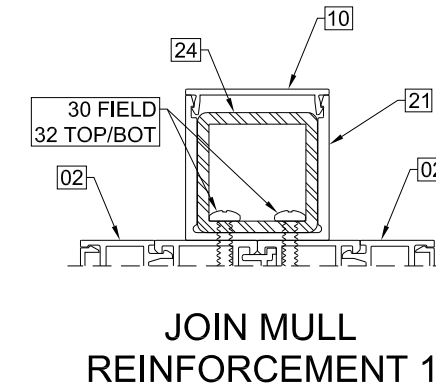
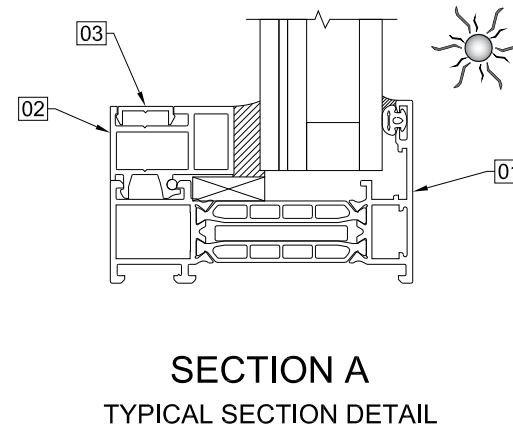
Reviewed By:
 CAC

Date:
 02MAY2024





SYMBOL INDICATES
EXTERIOR



5/9/2024 LUCAS TURNER FL PE 58201
TURNER ENGINEERING & CONSULTING, INC.
2428 OLD NATCHEZ TRACE TRL., CAMDEN, TN, 38320
PH 941-380-1574

Scale:
NOT TO SCALE

Sheet #:
3 OF 5

Drawing Title:
LUXVIEW FIXED 80i WINDOW WALL

Drawing Number:
FPA-FIX80i

Drawn By:
JAB

Reviewed By:
CAC

Revision:
00

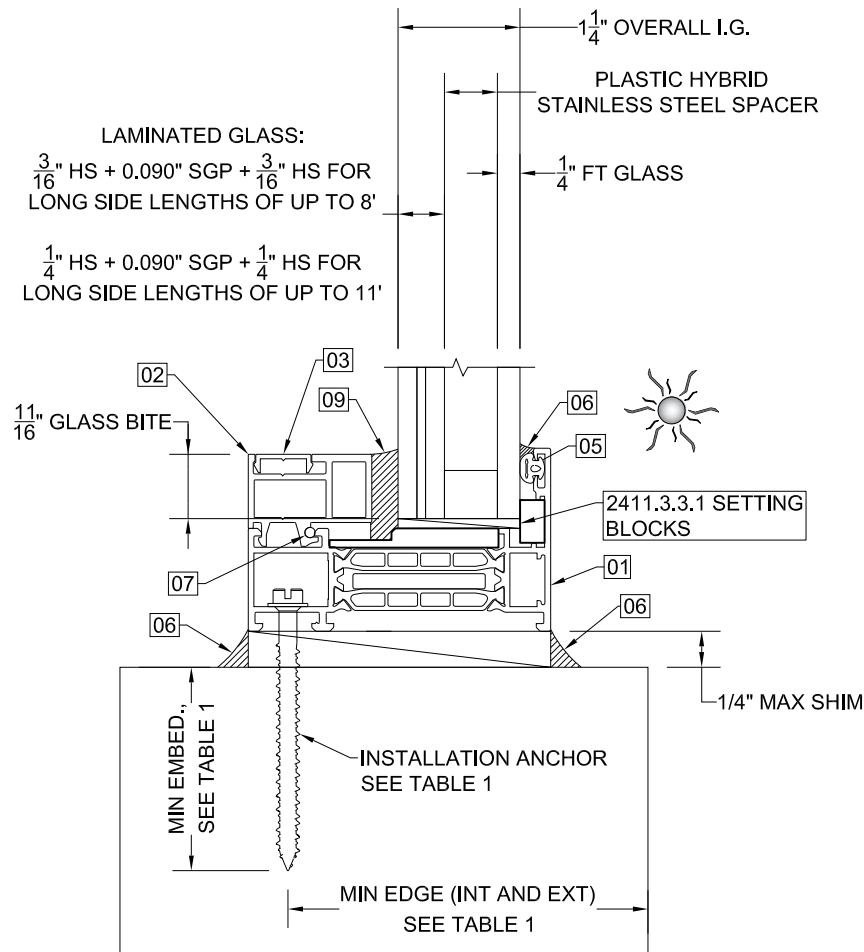
Date:
02MAY2024

LUXVIEW

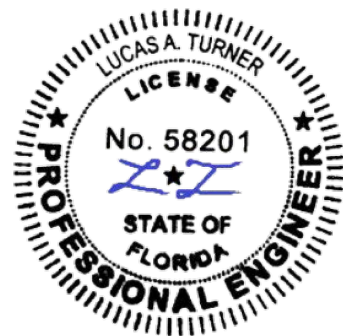
LuxView Proprietary
Copyright 2024 LuxView LLC

GENERAL ANCHOR NOTES:

1. INSTALL SHIMS AT EACH ANCHOR LOCATION WHERE A GAP OF 1/16" OR GREATER EXISTS BETWEEN PRODUCT FRAME AND SUBSTRATE.
2. SHIMS SHALL BE LOAD-BEARING (PLASTIC OR METALLIC) AND CAPABLE OF TRANSFERRING LOADS TO SUBSTRATE.
3. SPECIFIED ANCHOR EMBEDMENT TO SUBSTRATE SHALL BE BEYOND WALL FINISH OR STUCCO, BY OTHERS. FOR ATTACHMENT TO METAL SUBSTRATES ENSURE FULL THREAD ENGAGEMENT
4. FOR MASONRY WITH WOOD BUCKS LESS THAN 1-1/2" THICK, EMBEDMENT SHALL BE BEYOND WOOD BUCKS AND INTO MASONRY. WOOD BUCKS ARE OPTIONAL WITH MASONRY INSTALLATIONS WHERE MASONRY EDGE DISTANCE CONDITIONS ARE MET WITH NO BUCKS. WOOD BUCKS 1-1/2" THICK OR GREATER SHALL HAVE EMBEDMENT INTO THE WOOD BUCKS.
5. ENSURE 4" MIN. ON-CENTER SPACING BETWEEN ANY TWO INSTALLATION ANCHORS.



TYPICAL INSTALLATION AND GLAZING DETAIL



5/9/2024 LUCAS TURNER FL PE 58201
 TURNER ENGINEERING & CONSULTING, INC.
 2428 OLD NATCHEZ TRACE TRL., CAMDEN, TN, 38320
 PH 941-380-1574

Scale:
 NOT TO SCALE

Sheet #:
 4 OF 5

Drawing Title:
LUXVIEW FIXED 80i WINDOW WALL

Drawing Number:
 FPA-FIX80i

Drawn By:
 JAB

Reviewed By:
 CAC

Revision:
 00

Date:
 02MAY2024

Bill Of Materials

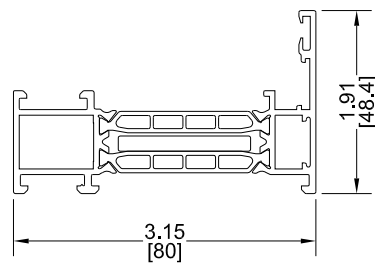
TAG	Part #	Part Name	Material
1	LUX-SD80T-0003	80mm Frame	6063-T5 Alum w/ Polyamide Strut
2	LUX-GZB-0004	Glazing Bead	6063-T6 Alum
3	LUX-COV-0020	Glazing Bead Cover	6063-T5 Alum
4	LUX-FX80-0006	T-Mullion	6063-T5 Alum w/ Polyamide Strut
5	LUX-GKT-0001	Exterior Gasket	EPDM
6	DOW-795	Silicone	Silicone
7	LUX-GKT-0056	Cord Gasket	EPDM
8	LUX-EXT-0013	Join Mull Alignment Clip	6063-T5 Alum
9	GE-SSG4600	Structural Silicone	Silicone
10	LUX-EXT-0048	Reinforcement Cover	6063-T5 Alum
11	SEE TABLE 1	Installation Anchor	SEE TABLE 1
12	LUX-FST-0037	Glazing Bead Anchor, #10x.875"	18-8 Stainless Steel
13	LUX-FST-0038	Join Mull Screw #10x2"	18-8 Stainless Steel
14	LUX-PRK-0036	Setting Block	Nylon 6
15	LUX-CLT-0001	Alignment Corner Cleat	6063-T5 Alum
16	LUX-CLT-0002	Primary Corner Cleat	6063-T5 Alum
17	LUX-CLT-0003	Secondary Corner Cleat	6063-T5 Alum
18	LUX-CLT-0045	Glazing Bead Corner Cleat	6061-T6 Alum
19	LUX-FST-0039	Glazing Bead Cleat Screws #10x.5"	18-8 Stainless Steel
20	LUX-PRK-0049	Glazing Spacers	Nylon 6
21	LUX-EXT-0049	Small Reinforcement	6063-T5 Alum
22	LUX-EXT-0045	Medium Reinforcement	6063-T6 Alum
23	LUX-EXT-0044	Large Reinforcement	6063-T6 Alum
24	-	1.25"x1.25"x.12" SS Tube	304 Stainless Steel
25	-	1/4"x2.5" SS Bar	304 Stainless Steel
26	-	1/4"x4" SS Bar	304 Stainless Steel
27	LUX-COV-0026	Medium Reinforcement End Caps	6063-T5 Alum
28	LUX-COV-0025	Large Reinforcement End Caps	6063-T5 Alum
29	-	Reinforcement End Cap Screws M4x.7x10	18-8 Stainless Steel
30	LUX-FST-0041	Join Mull Reinforcement Screws #8x1.5"	18-8 Stainless Steel
31	LUX-FST-0042	T-Mull Reinforcement Screws #10x1.5"	18-8 Stainless Steel
32	LUX-FST-0043	Top/Bottom Reinforcement Screws #14x1.5"	18-8 Stainless Steel
33	LUX-CLT-0047	T-Mull Cleats	Aluminum
34	LUX-FST-0051	T-Mull End Screws #6x3"	18-8 Stainless Steel
35	LUX-FST-0052	T-Mull End Screws #8x3"	18-8 Stainless Steel

TABLE 1: INSTALLATION ANCHOR REQUIREMENTS TABLE
 NOTE: ALL ANCHORS TO BE PAN HEAD, HEX/WASHER HEAD, OR FLAT HEAD WITH SUPPLEMENTAL STAINLESS WASHER OF EQUIVALENT DIAMETER TO HEX/WASHER HEAD

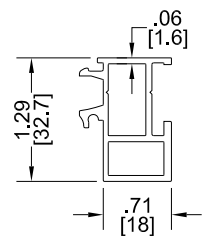
ANCHOR ID	SUBSTRATE TYPE	ANCHOR TYPE	MIN. EMBED.	MIN. EDGE DISTANCE
A	CONCRETE (3.05 KSI MIN)	1/4" DEWALT ULTRACON+	1-3/8"	1"
B	GROUT-FILLED CMU (ASTM C-90)	1/4" DEWALT ULTRACON+	1-3/4"	1"
C	CONCRETE (3.05 KSI MIN)	1/4" DEWALT ULTRACON+	1-3/8"	2-1/2"
D	GROUT-FILLED CMU (ASTM C-90)	1/4" DEWALT ULTRACON+	1-3/4"	2-1/2"
E	HOLLOW CMU (ASTM C-90)	1/4" DEWALT ULTRACON+	1-1/4"	2-1/2"
F	2X MIN. SPRUCE-PINE-FIR WOOD (G=0.42 MIN.)	1/4" DEWALT ULTRACON+	1-3/4"	1"
G	16 GAUGE (0.060") MIN. STEEL STUD, 33KSI YIELD MIN., OR 1/8" ALUM. 6063-T5 MIN.	1/4"-14 HIL TI KWIK-FLEX OR TEKS SELF-DRILLING SCREW	FULL+ 3 THREADS	1/2"

LUXVIEW

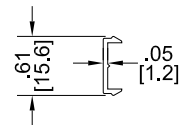
LuxView Proprietary
 Copyright 2024 LuxView LLC



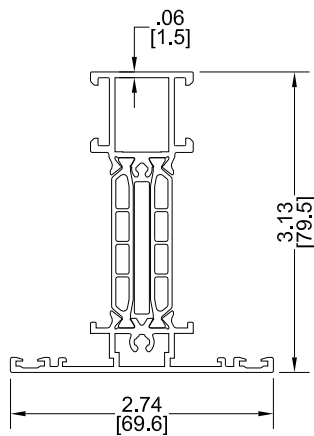
01



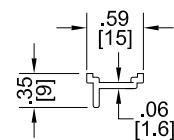
02



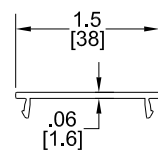
03



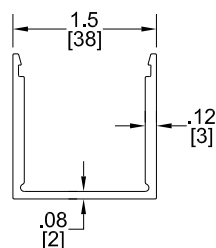
04



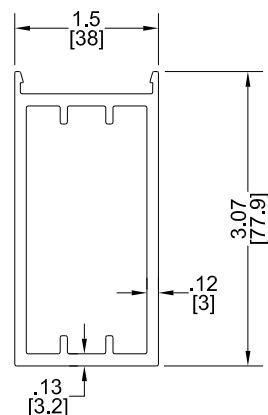
08



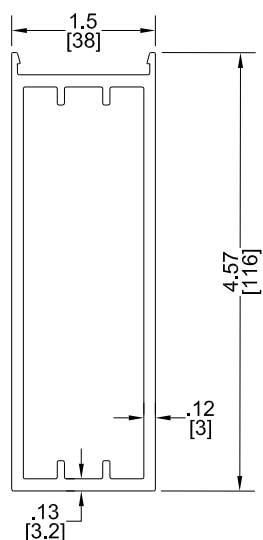
10



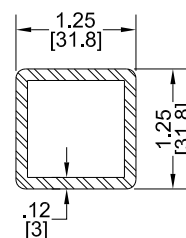
21



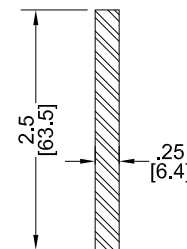
22



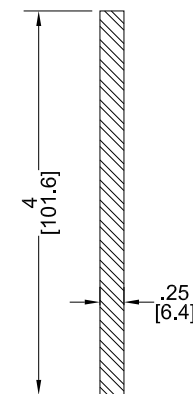
23



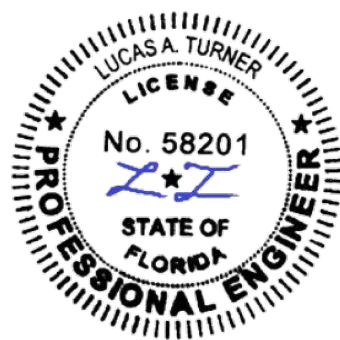
24



25



26



5/9/2024 LUCAS TURNER FL PE 58201 TURNER ENGINEERING & CONSULTING, INC. 2428 OLD NATCHEZ TRACE TRL., CAMDEN, TN, 38320 PH 941-380-1574		Drawing Title: LUXVIEW FIXED 80i WINDOW WALL	
Scale: NOT TO SCALE		Drawing Number: FPA-FIX80i	
Sheet #: 5 OF 5		Drawn By: JAB	Reviewed By: CAC
		Revision: 00	Date: 02MAY2024

LUXVIEW