

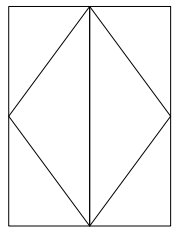
GENERAL NOTES

1. THE PRODUCT SHOWN HEREIN CONSTRUCTED FROM LUXVIEW THERMALLY BROKEN ALUMINUM FRAMES HAS BEEN TESTED TO TAS2011/202/203-94, AND MEETS THE REQUIREMENTS OF THE FLORIDA BUILDING CODE, 8TH EDITION (2023), INCLUDING THE HIGH VELOCITY HURRICANE ZONE.
2. THIS PRODUCT IS LARGE AND SMALL MISSILE IMPACT RESISTANT AND DOES NOT REQUIRE THE USE OF IMPACT PROTECTIVE DEVICES (SHUTTERS) IN WINDBORNE DEBRIS REGIONS.
3. THE DESIGN PRESSURES INDICATED IN THIS DRAWING ARE AS LIMITED BY ASTM E-1300 GLASS TABLES, AND TESTED WATER, STRUCTURAL, AND CYCLIC PRESSURES.
4. THIS DOCUMENT ADDRESSES PRODUCT ANCHORAGE TO ACHIEVE THE INDICATED DESIGN PRESSURES AT THE INDICATED SIZES, IN THE CONFIGURATION SHOWN IN THE ELEVATIONS. INSTALL PRODUCTS WITH MAXIMUM SHIM GAP, MINIMUM EDGE DISTANCE AND EMBEDMENT, AND WITH FASTENER TYPE AS SHOWN AS INDICATED IN TABLE 1.
5. THE 4/3 ALLOWABLE STRESS INCREASE FACTOR (SHORT-TERM INCREASE FACTOR) HAS NOT BEEN USED IN THE ANCHOR ANALYSIS FOR THIS SYSTEM. THE 1.6 Cd FACTOR WAS USED IN THE ANALYSIS OF ANCHORAGE INTO WOOD SUBSTRATE.
6. THE OPENING SUBSTRATE MATERIALS (FRAMING, MASONRY, BUCKS) AND ATTACHMENT OF BUCKS TO THE SUBSTRATE ARE BY OTHERS AND SHALL BE VERIFIED BY THE ARCHITECT OR ENGINEER OF RECORD OR AS APPROVED BY THE AUTHORITY HAVING JURISDICTION (AHJ). BUCKING, OPENINGS, & BUCKING FASTENERS MUST BE PROPERLY DESIGNED & INSTALLED BY OTHERS IN ACCORDANCE WITH THE FBC TO TRANSFER SUPERIMPOSED LOADS TO THE STRUCTURE. WITH MASONRY OPENINGS, WOOD BUCKS ARE OPTIONAL.
7. DISSIMILAR MATERIALS THAT COME INTO CONTACT SHALL BE COATED OR OTHERWISE PROTECTED TO PREVENT GALVANIC REACTIONS. WOOD BUCKS, IF USED, SHALL BE PRESSURE TREATED, WITH EITHER A TREATMENT OR COATING COMPATIBLE WITH THIS PRODUCT.
8. ALL ANCHORS USED SHALL BE OF A MATERIAL OR HAVE A COATING COMPATIBLE WITH THE PRESSURE TREATED WOOD BUCKS AND ALL OTHER WINDOW MATERIALS.
9. ALL HARDWARE & FASTENERS SHALL BE IN ACCORDANCE WITH THESE DRAWINGS, OR AS APPROVED, SIGNED, AND SEALED BY A FLORIDA REGISTERED PROFESSIONAL ENGINEER ON A SITE-SPECIFIC BASIS.
10. SEALING AND FLASHING STRATEGIES FOR OVERALL WATER INFILTRATION RESISTANCE OF THE INSTALLED PRODUCT SHALL BE THE RESPONSIBILITY OF OTHERS AND ARE NOT ADDRESSED BY THIS DOCUMENT.
11. FOR ADDITIONAL REQUIREMENTS SEE GENERAL ANCHOR NOTES, SHEET 2.

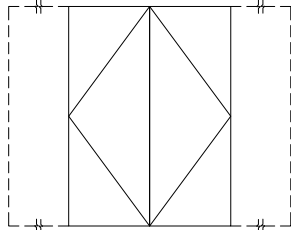
DESIGN PRESSURE	IMPACT RATING
+70/-70	LARGE AND SMALL MISSILE IMPACT

CONFIGURATION OPTIONS

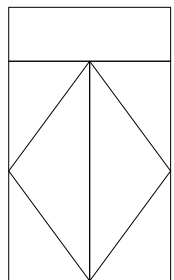
(ACTIVE PANEL CAN BE LH OR RH)



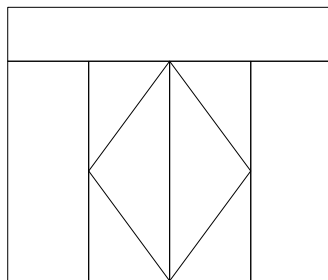
FRENCH OUTSWING



FIX 80i + FRENCH OUTSWING + FIX 80i



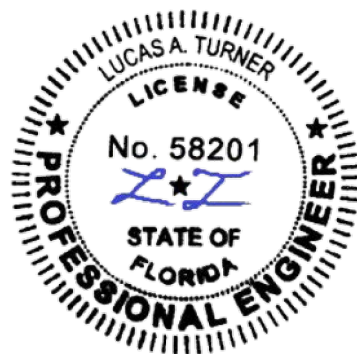
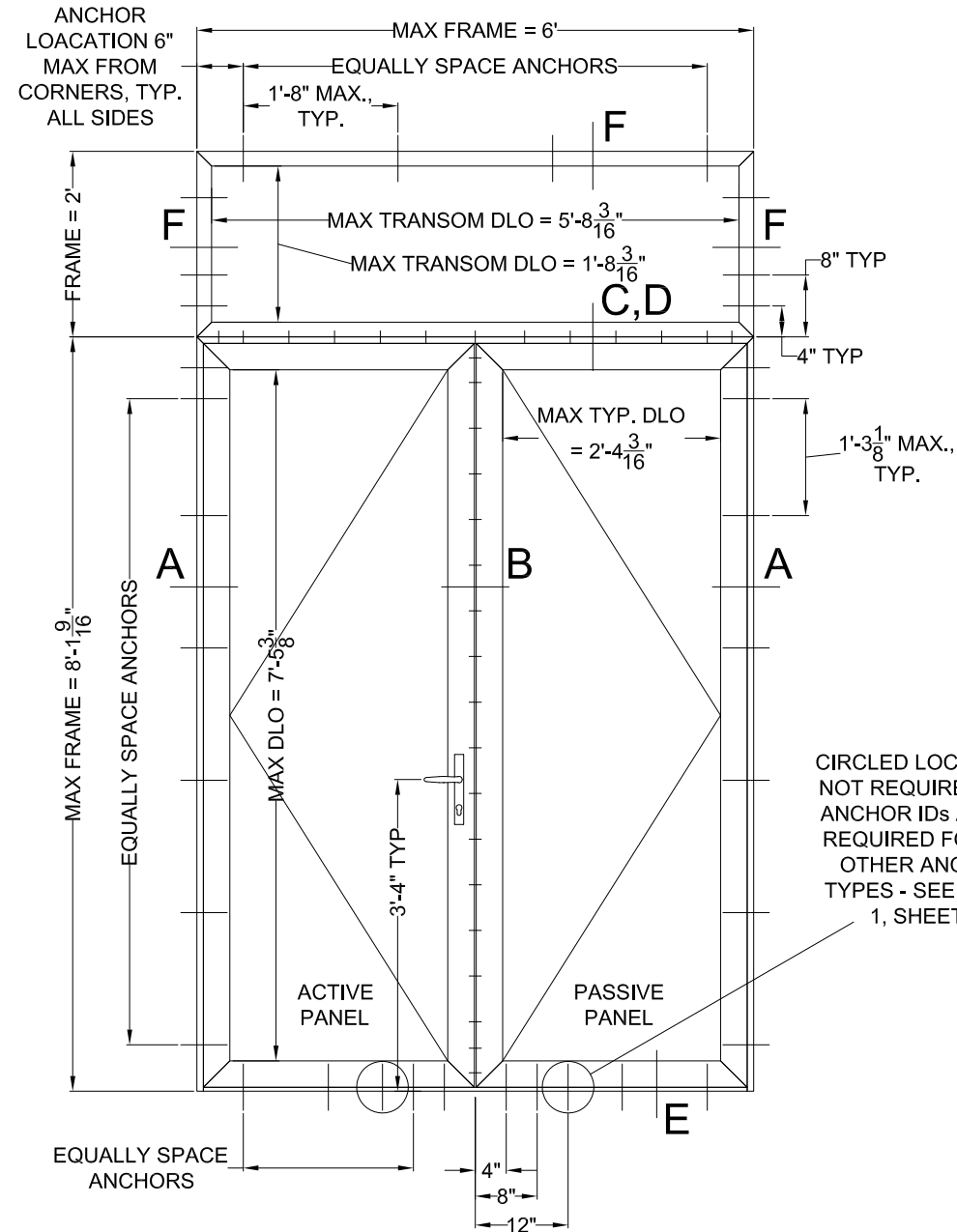
FRENCH OUTSWING + TL



FIX 80i + FRENCH OUTSWING + FIX 80i + TL
(MAX. TRANSOM WIDTH = 6')

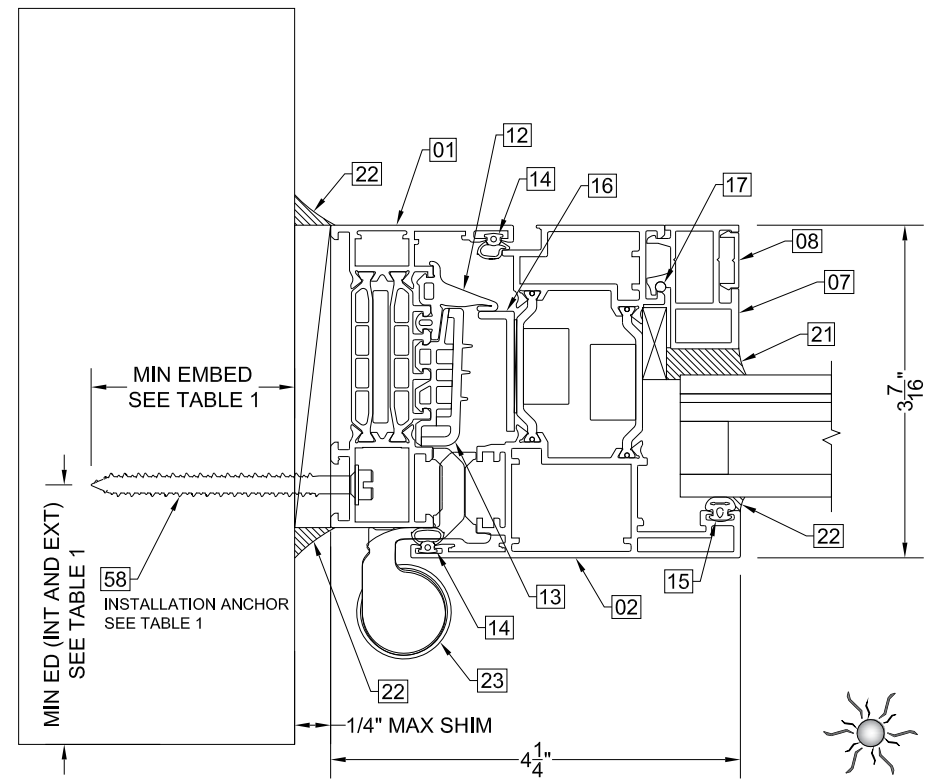
* MAY BE MULLED INDEFINITELY WITH ADDITIONAL FIX 80i UNITS, SEE SEPARATE LUXVIEW APPROVAL FOR FIX 80i SIZE AND MULL REQUIREMENTS.

LUXVIEW FRENCH 80i - OUTSWING FRENCH DOOR

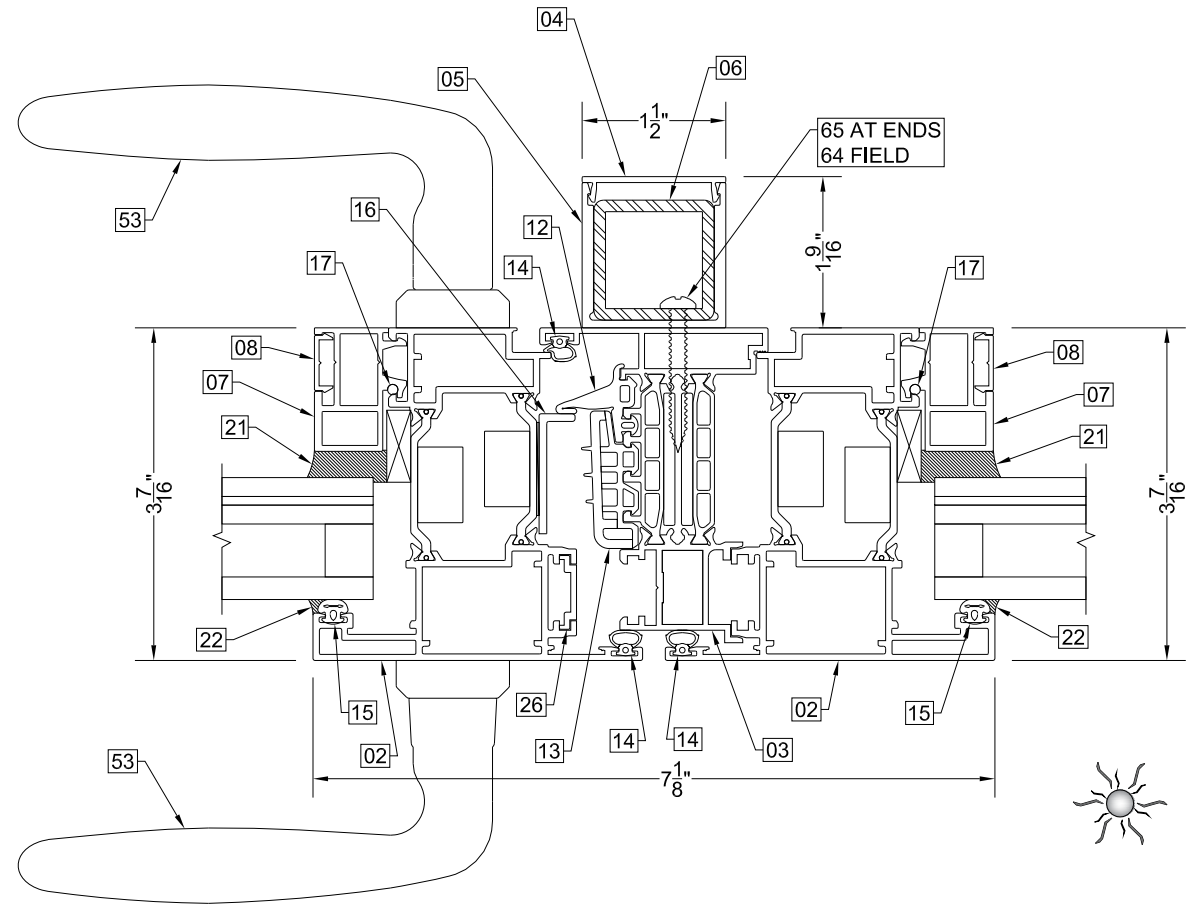


5/9/2024 LUCAS TURNER, FL PE 58201 TURNER ENGINEERING & CONSULTING, INC. 2428 OLD NATCHEZ TRACE TRL. CAMDEN, TN, 38320 PH 941-380-1574	Drawing Title: LUXVIEW FRENCH 80i - OUTSWING FRENCH DOOR	
Scale: NOT TO SCALE	Drawing Number: FPA-FRENCH80i	Revision: 00
Sheet #: 1 OF 5	Drawn By: JAB	Reviewed By: CAC
		Date: 06MAY2024

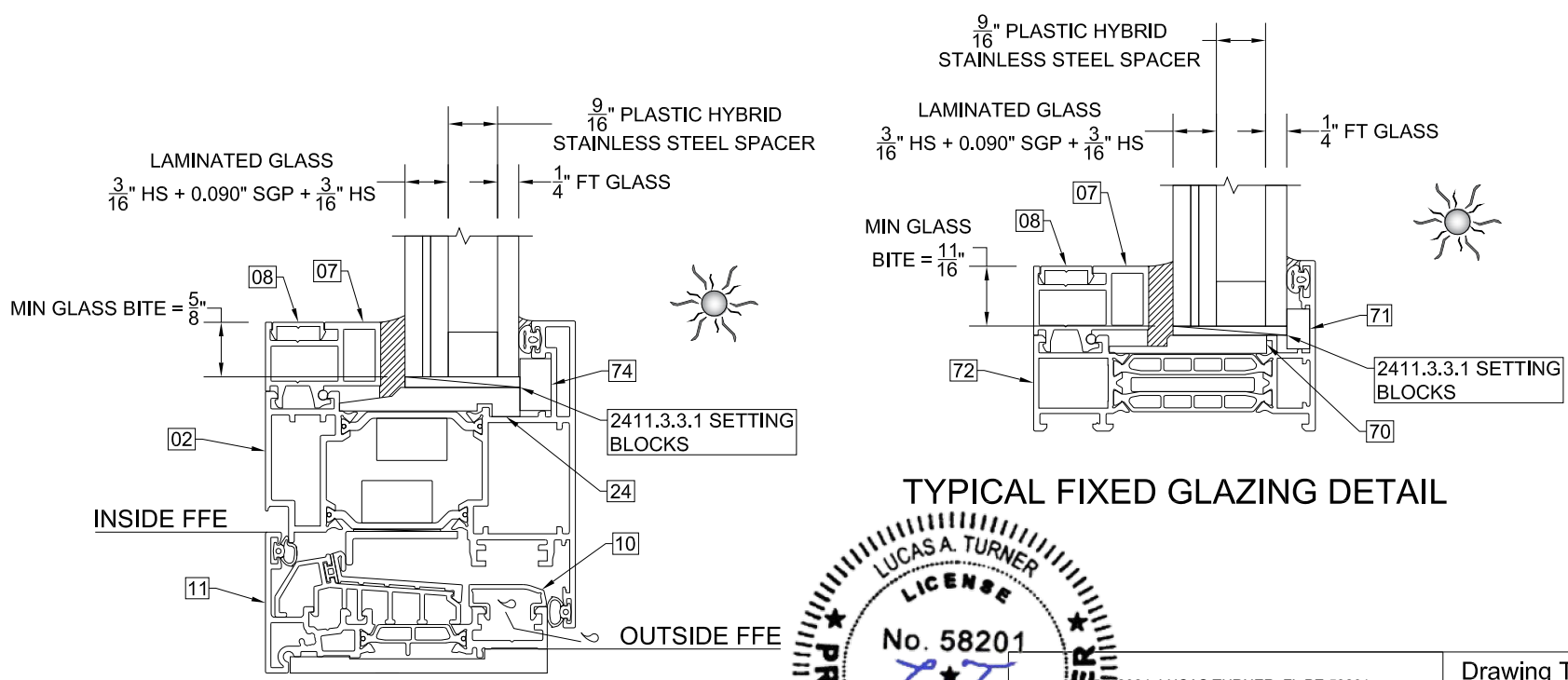
LUXVIEW



SECTION A
TYPICAL HINGE-SIDE SECTION DETAIL



SECTION B
TYPICAL MEETING RAIL SECTION DETAIL



TYPICAL FIXED GLAZING DETAIL

TYPICAL OUTSWING GLAZING DETAIL

GENERAL ANCHOR NOTES:

1. INSTALL SHIMS AT EACH ANCHOR LOCATION WHERE A GAP OF 1/16" OR GREATER EXISTS BETWEEN PRODUCT FRAME AND SUBSTRATE.
2. SHIMS SHALL BE LOAD-BEARING (PLASTIC OR METALLIC) AND CAPABLE OF TRANSFERRING LOADS TO SUBSTRATE.
3. SPECIFIED ANCHOR EMBEDMENT TO SUBSTRATE SHALL BE BEYOND WALL FINISH OR STUCCO, BY OTHERS. FOR ATTACHMENT TO METAL SUBSTRATES ENSURE FULL THREAD ENGAGEMENT
4. FOR MASONRY WITH WOOD BUCKS LESS THAN 1-1/2" THICK, EMBEDMENT SHALL BE BEYOND WOOD BUCKS AND INTO MASONRY. WOOD BUCKS ARE OPTIONAL WITH MASONRY INSTALLATIONS WHERE MASONRY EDGE DISTANCE CONDITIONS ARE MET WITH NO BUCKS. WOOD BUCKS 1-1/2" THICK OR GREATER SHALL HAVE EMBEDMENT INTO THE WOOD BUCKS.
5. ENSURE 4" MIN. ON-CENTER SPACING BETWEEN ANY TWO INSTALLATION ANCHORS.

TABLE 1: INSTALLATION ANCHOR REQUIREMENTS TABLE
NOTE: ALL ANCHORS TO BE PAN HEAD, HEX/WASHER HEAD, OR FLAT HEAD WITH SUPPLEMENTAL STAINLESS WASHER OF EQUIVALENT DIAMETER TO HEX/WASHER HEAD

ANCHOR ID	SUBSTRATE TYPE	ANCHOR TYPE	MIN. EMBED.	MIN. EDGE DISTANCE
A	CONCRETE (3.05 KSI MIN)	1/4" DEWALT ULTRACON+	1-3/8"	2-1/2"
B	GROUT-FILLED CMU (ASTM C-90)	1/4" DEWALT ULTRACON+	1-3/4"	2-1/2"
C	HOLLOW CMU (ASTM C-90)	1/4" DEWALT ULTRACON+	1-1/4"	2-1/2"
D	2X MIN. SPRUCE-PINE-FIR WOOD (G=0.42 MIN.)	1/4" DEWALT ULTRACON+	1-3/4"	1"
E	16 GAUGE (0.060") MIN. STEEL STUD, 33KSI YIELD MIN., OR 1/8" ALUM. 6063-T5 MIN.	1/4"-14 HIL TI KWIK-FLEX OR TEKS SELF-DRILLING SCREW	FULL+ 3 THREADS	1/2"

LUCAS A. TURNER
LICENSE
No. 58201
STATE OF FLORIDA
PROFESSIONAL ENGINEER

2024 LUCAS TURNER, FL PE 58201
TURNER ENGINEERING & CONSULTING, INC.
2428 OLD NATCHEZ TRACE TRL.
CAMDEN, TN, 38320 PH 941-380-1574

Scale:
NOT TO SCALE

Sheet #:
2 OF 5

Drawing Title:
LUXVIEW FRENCH 80i - OUTSWING FRENCH DOOR

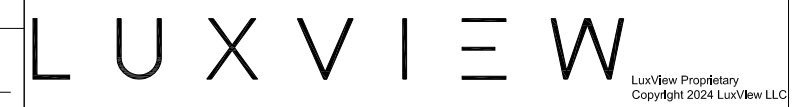
Drawing Number:
FPA-FRENCH80i

Drawn By:
JAB

Revision:
00

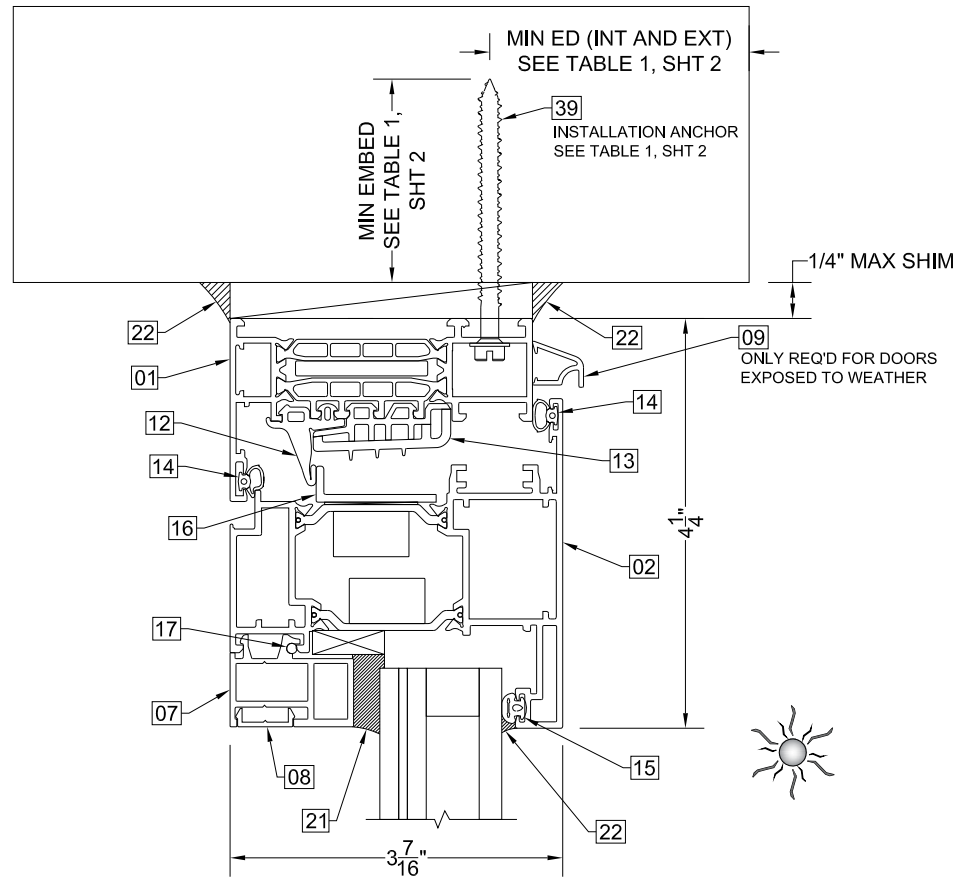
Reviewed By:
CAC

Date:
06MAY2024



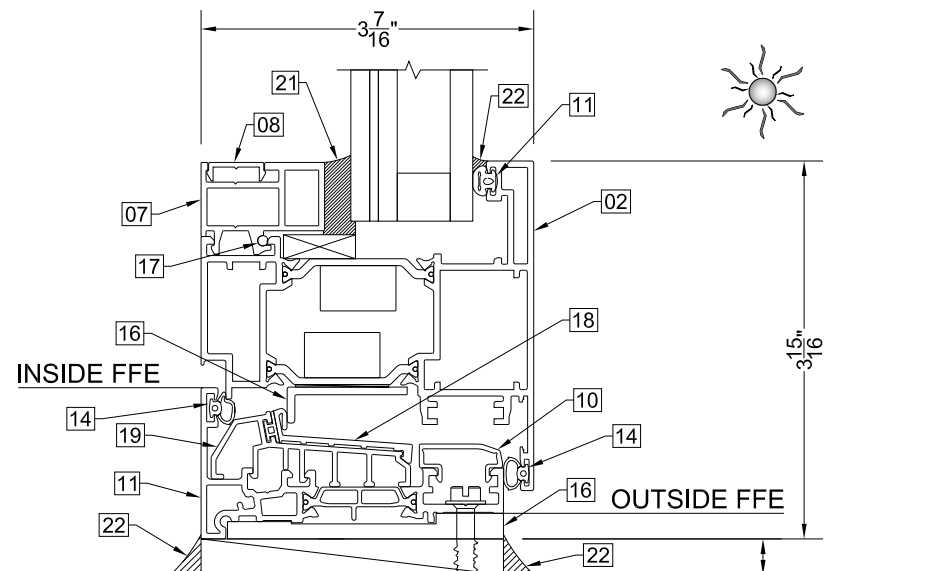
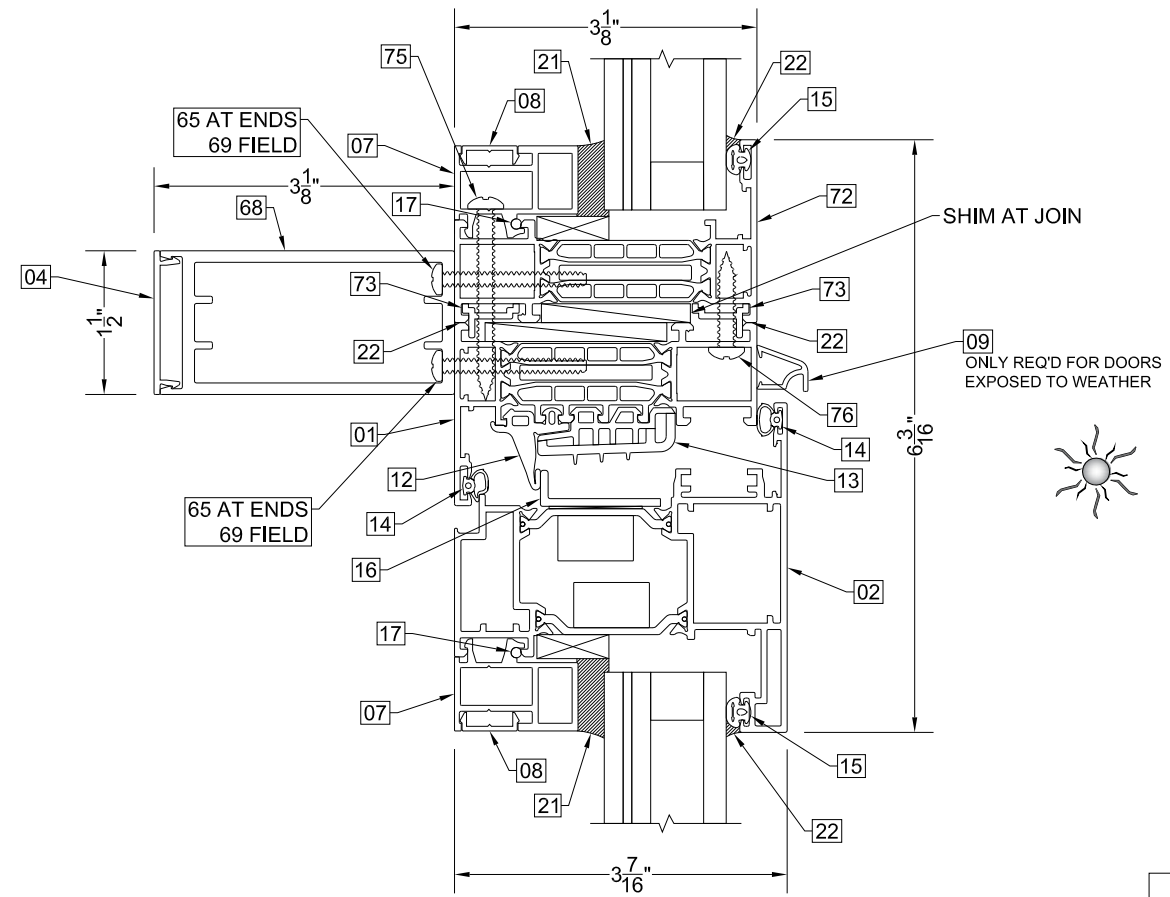
SECTION C

TYPICAL OUTSWING HEAD SECTION DETAIL



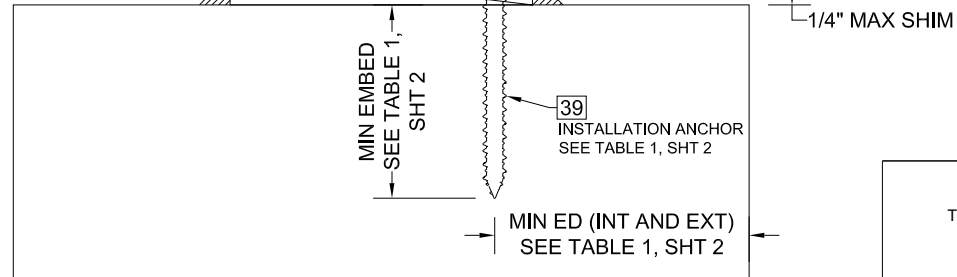
SECTION D

TYPICAL SWING HEAD SECTION DETAIL AT TOPLITE



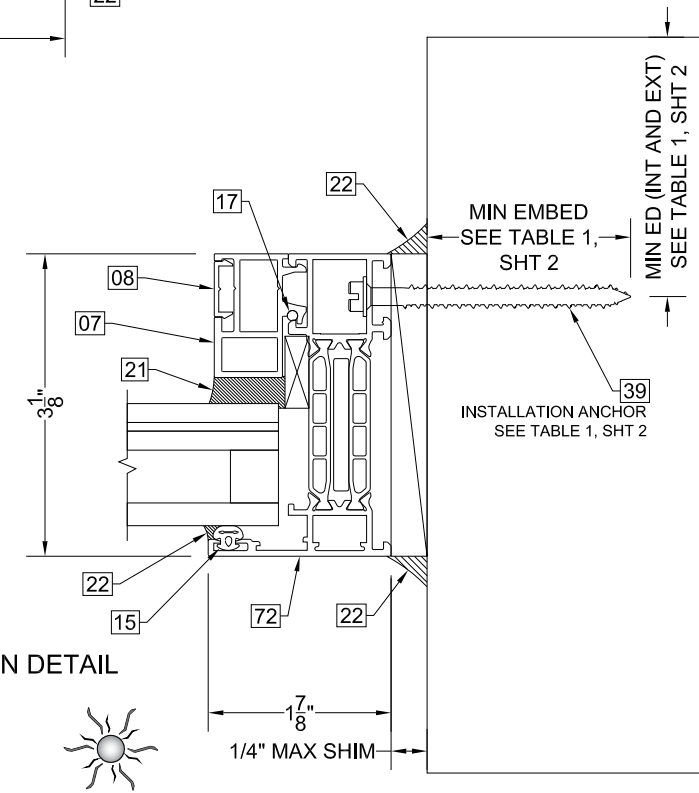
SECTION E

TYPICAL OUTSWING HEAD SECTION DETAIL

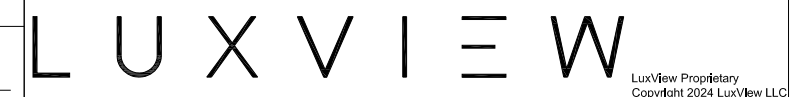


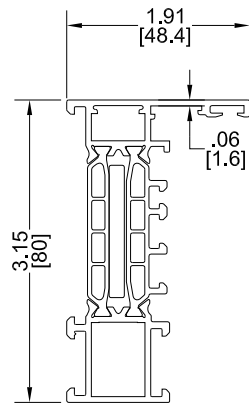
SECTION F

TYPICAL TOPLITE SECTION DETAIL

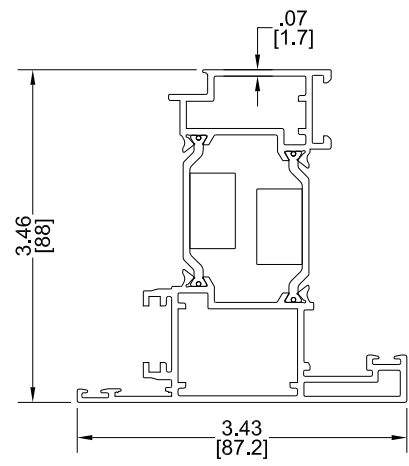


5/9/2024 LUCAS TURNER, FL PE 58201 TURNER ENGINEERING & CONSULTING, INC. 2428 OLD NATCHEZ TRACE TRL. CAMDEN, TN, 38320 PH 941-380-1574		Drawing Title: LUXVIEW FRENCH 80i - OUTSWING FRENCH DOOR	
Scale: NOT TO SCALE		Drawing Number: FPA-FRENCH80i	
Sheet #: 3 OF 5		Drawn By: JAB	Reviewed By: CAC
		Revision: 00	Date: 06MAY2024

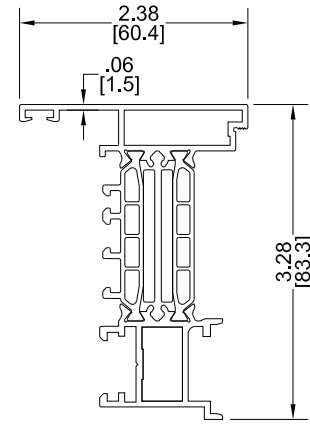




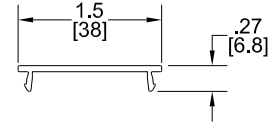
01



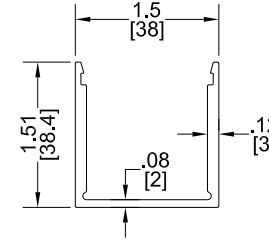
02



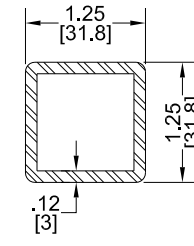
03



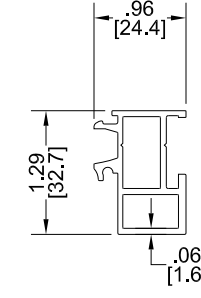
04



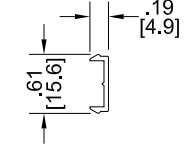
05



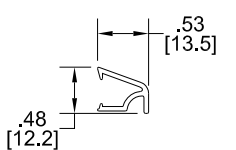
06



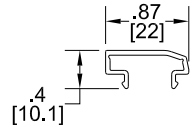
07



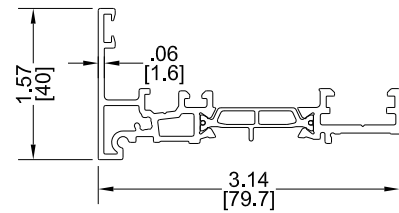
08



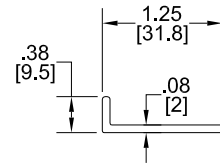
09



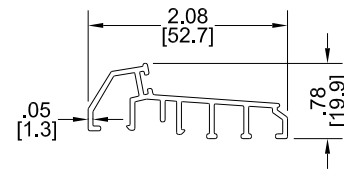
10



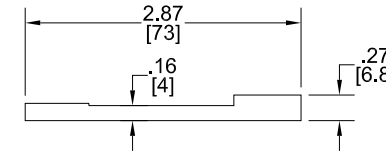
11



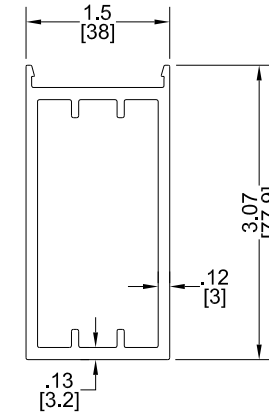
16



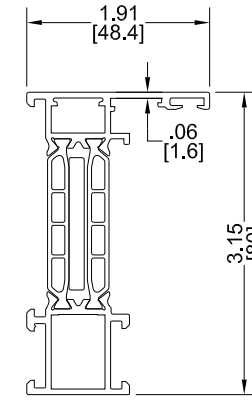
19



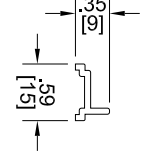
20



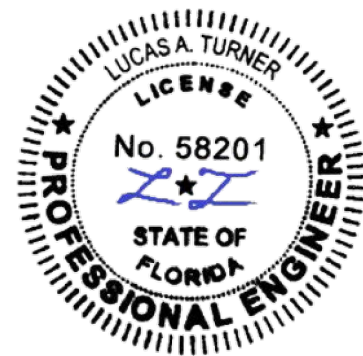
68



72



73



5/9/2024 LUCAS TURNER, FL PE 58201
 TURNER ENGINEERING & CONSULTING, INC.
 2428 OLD NATCHEZ TRACE TRL.
 CAMDEN, TN, 38320 PH 941-380-1574

Scale:
 NOT TO SCALE

Sheet #:
 4 OF 5

Drawing Title:
 LUXVIEW FRENCH 80i - OUTSWING FRENCH DOOR

Drawing Number:
 FPA-FRENCH80i

Drawn By:
 JAB

Revision:
 00

Reviewed By:
 CAC

Date:
 06MAY2024

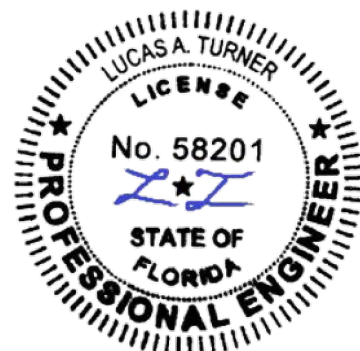
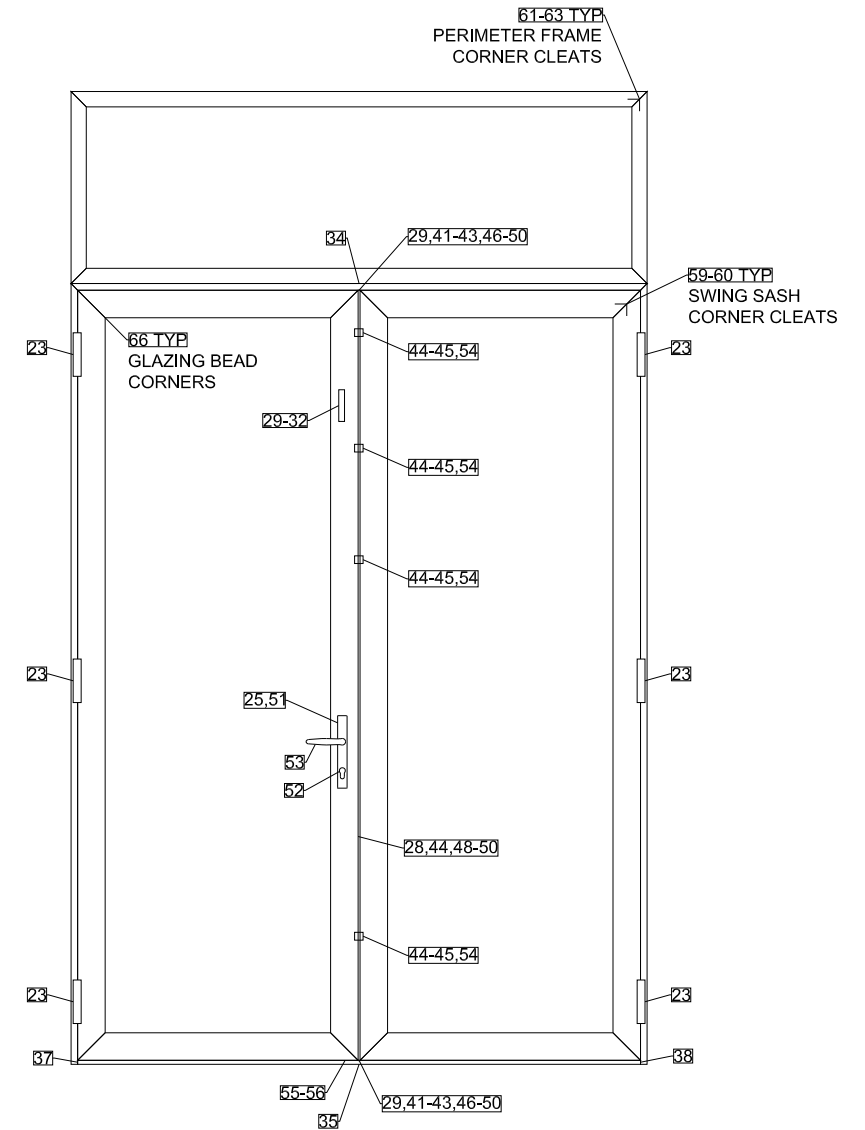
LUXVIEW

LuxView Proprietary
 Copyright 2024 LuxView LLC

Bill Of Materials			
TAG	Part #	Part Name	Material
1	LUX-SD80T-0003	80mm Operable Frame	6063-T5 Alum w/ Polyamide Strut
2	LUX-SD80T-0001	80mm Operable Sash	6063-T5 Alum w/ Polyamide Strut
3	LUX-SD80T-0017	80mm Inverter	6063-T5 Alum w/ Polyamide Strut
4	LUX-EXT-0048	Reinforcement Cover	6063-T6 Alum
5	LUX-EXT-0049	Small Reinforcement	6063-T6 Alum
6	-	1.25" x 1.25" x .12" SS Tube	304 Stainless Steel
7	LUX-GZB-0004	Glazing Bead	6063-T6 Alum
8	LUX-COV-0020	Glazing Bead Cover	6063-T5 Alum
9	LUX-EXT-0011	Drip Cap	6063-T5 Alum
10	LUX-COV-0018	Threshold Cap	6063-T5 Alum
11	LUX-SD80T-0002	Threshold	6063-T5 Alum w/ Polyamide Strut
12	LUX-GKT-0042	Central Gasket Extension	EPDM
13	LUX-GKT-0043	Central Gasket	EPDM
14	LUX-GKT-0008	Sealing Gasket	EPDM
15	LUX-GKT-0001	Sealing Gasket	EPDM
16	LUX-SD80T-0013	Sealing Angle	PVC
17	LUX-GKT-0056	Cord Gasket	EPDM
18	LUX-GKT-0057	Threshold Gasket	EPDM
19	LUX-COV-0033	Threshold Gasket Holder	PVC
20	LUX-SD80T-0012	Threshold Base	HDPE
21	GE-SSG4600	Structural Silicone	Silicone
22	DOW-795	Silicone	Silicone
23	LUX-HIN-0005	Hinge Kit	Aluminum
24	LUX-PRK-0037	Glazing Wedge - Swing	Nylon6
25	LUX-SD80T-0011	Lockset Protector	Nylon6
26	LUX-HDL-0055	Lock String	Aluminum
27	LUX-HDL-0058	Mortise Lockset	Stainless Steel Assembly
28	LUX-STK-0005	Active Rod Guide	6061-T6 Alum
29	LUX-FST-0025	10mm Connecting Rod	304 Stainless steel
30	LUX-HDL-0056	Twinbolt lockset	Stainless Steel Assembly
31	LUX-FST-0026	M5x45mm Pan	18-8 Stainless Steel
32	LUX-COV-0041	TwinBolt Packer	Nylon6
33	LUX-STK-0004	Active Rod Strike	6061-T6 Alum
34	LUX-STK-0002	Rod Strike Top Plate	6061-T6 Alum
35	LUX-STK-0001	Rod Strike Bottom Plate	6061-T6 Alum
36	LUX-FST-0027	10-32x.375" Hex Flat	18-8 Stainless Steel
37	LUX-SD80T-0014	Swing Threshold End Cap - Left	Nylon6

38	LUX-SD80T-0015	Swing Threshold End Cap - Right	Nylon6
39	LUX-FST-0028	M4x30mm Hex Pan	18-8 Stainless Steel
40	LUX-FST-0029	M2.9x16mm Pan	18-8 Stainless Steel
41	LUX-STK-0006	Passive Rod Guide	304 Stainless steel
42	LUX-FST-0030	#10x.625" Flat Head	18-8 Stainless Steel
43	LUX-COV-0044	Swing Inverter End Cap Set	Rubber
44	LUX-HDL-0041	Stainless Steel Striker	Stainless Steel
45	LUX-FST-0031	#8x2" Flat Head	18-8 Stainless Steel
46	LUX-FST-0032	#10-32x.25" Button Head Hex	18-8 Stainless Steel
47	LUX-FST-0033	#6x1.75" Pan	18-8 Stainless Steel
48	LUX-ADP-0003	Rod Transition Block	6061-T6 Alum
49	LUX-FST-0035	4mmX10mm Flat Bar	6061-T6 Alum
50	LUX-HDL-0059	Astragal Lock	Stainless Steel Assembly
51	LUX-STK-0009	Door Strike	304 Stainless Steel
52	-	Locking Cylinder	Steel
53	LUX-HDL-0060	Handle Kit	Brass
54	LUX-STK-0010	Mushroom Cam	Stainless steel
55	LUX-STK-0007	Active SS Channel Bolt	304 Stainless Steel
56	LUX-STK-0008	Active Channel Support	6061-T6 Alum
57	LUX-FST-0036	#8x.75" Flat Head	18-8 Stainless Steel
58	See Table 1	Installation Anchor	See Table 1
59	LUX-CLT-0043	Primary Panel Cleat	6063-T5 Alum
60	LUX-CLT-0044	Secondary Panel Cleat	6063-T5 Alum
61	LUX-CLT-0002	Primary Frame Cleat	6063-T5 Alum
62	LUX-CLT-0003	Secondary Frame Cleat	6063-T5 Alum
63	LUX-CLT-0014	Frame Alignment Cleat	Cast Aluminum
64	LUX-FST-0042	Astragal Reinforcement Screw #10x1.5" Pan	18-8 Stainless Steel
65	LUX-FST-0043	Astragal Reinforcement Screw #14x1.5" Pan	18-8 Stainless Steel
66	LUX-CLT-0045	Glazing Bead Cleat	6061-T6 Alum
67	LUX-FST-0039	Glazing Bead Cleat Screw #10x.5" Flat	18-8 Stainless Steel
68	LUX-EXT-0045	Medium Reinforcement	6063-T6 Alum
69	LUX-FST-0041	Join Mull Reinforcement Screw #8x1.5" Pan	18-8 Stainless Steel
70	LUX-PRK-0049	Glazing Wedge - Fixed	Nylon 6
71	LUX-PRK-0036	Setting Block - Fixed	Nylon 6
72	LUX-FX80-0001	Window Frame	6063-T5 Alum w/ Polyamide Strut
73	LUX-EXT-0013	Join Mull Alignment Clip	6063-T5 Alum
74	LUX-PRK-0056	Setting Block - Swing	Nylon 6
75	LUX-FST-0038	Join Mull Screws #10x2" Pan	18-8 Stainless Steel
76	LUX-FST-0054	Join Mull Screws #10x1" Pan	18-8 Stainless Steel

HARDWARE CONFIGURATION



5/9/2024 LUCAS TURNER, FL PE 58201
TURNER ENGINEERING & CONSULTING, INC.
2428 OLD NATCHEZ TRACE TRL.
CAMDEN, TN, 38320 PH 941-380-1574

Scale:
NOT TO SCALE

Sheet #:
5 OF 5

Drawing Title:
LUXVIEW FRENCH 80i - OUTSWING FRENCH DOOR

Drawing Number:
FPA-FRENCH80i

Drawn By:
JAB

Reviewed By:
CAC

Revision:
00

Date:
06MAY2024

LUXVIEW

LuxView Proprietary
Copyright 2024 LuxView LLC