

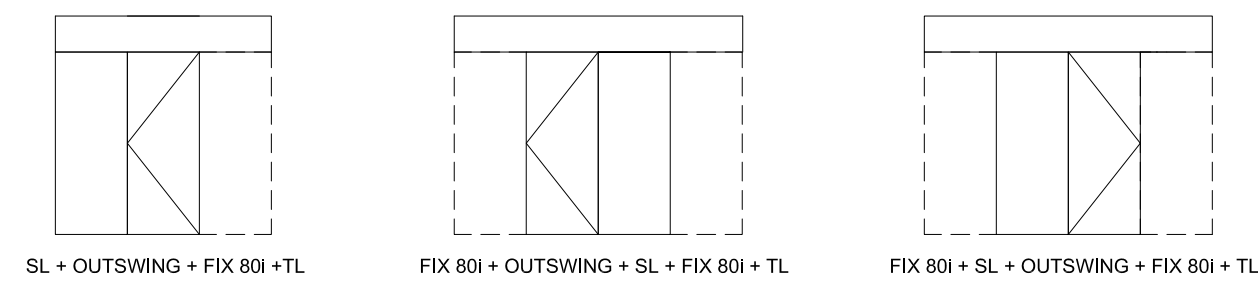
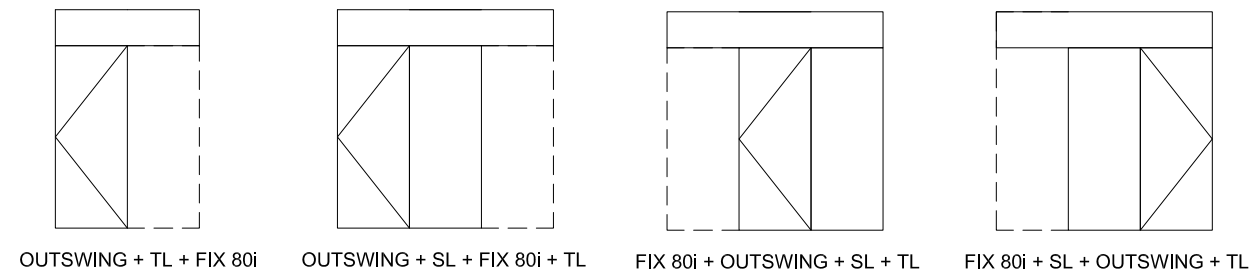
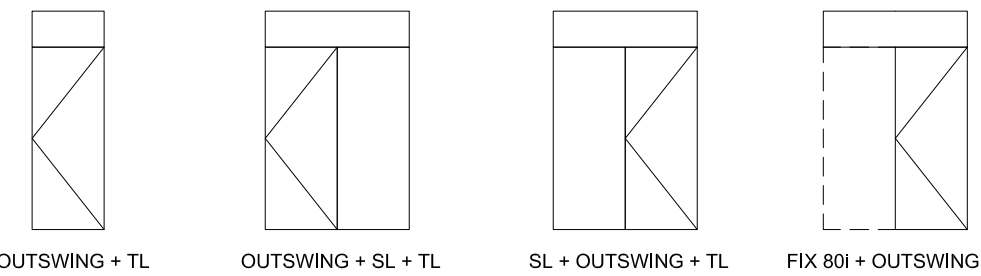
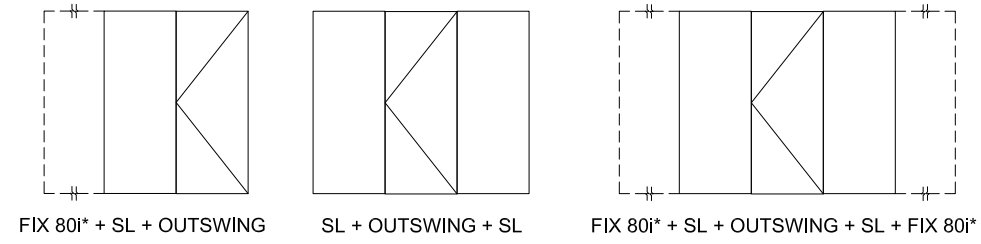
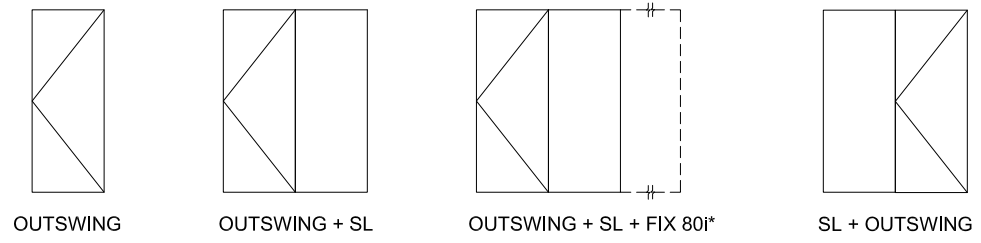
**GENERAL NOTES**

1. THE PRODUCT SHOWN HEREIN CONSTRUCTED FROM LUXVIEW THERMALLY BROKEN ALUMINUM FRAMES HAS BEEN TESTED TO TAS201/202/203-94, AND MEETS THE REQUIREMENTS OF THE FLORIDA BUILDING CODE, 8TH EDITION (2023), INCLUDING THE HIGH VELOCITY HURRICANE ZONE.
2. THIS PRODUCT IS LARGE AND SMALL MISSILE IMPACT RESISTANT AND DOES NOT REQUIRE THE USE OF IMPACT PROTECTIVE DEVICES (SHUTTERS) IN WINDBORNE DEBRIS REGIONS.
3. THE DESIGN PRESSURES INDICATED IN THIS DRAWING ARE AS LIMITED BY ASTM E-1300 GLASS TABLES, AND TESTED WATER, STRUCTURAL, AND CYCLIC PRESSURES.
4. THIS DOCUMENT ADDRESSES PRODUCT ANCHORAGE TO ACHIEVE THE INDICATED DESIGN PRESSURES AT THE INDICATED SIZES, IN THE CONFIGURATION SHOWN IN THE ELEVATIONS. INSTALL PRODUCTS WITH MAXIMUM SHIM GAP, MINIMUM EDGE DISTANCE AND EMBEDMENT, AND WITH FASTENER TYPE AS SHOWN AS INDICATED IN TABLE 1.
5. THE 4/3 ALLOWABLE STRESS INCREASE FACTOR (SHORT-TERM INCREASE FACTOR) HAS NOT BEEN USED IN THE ANCHOR ANALYSIS FOR THIS SYSTEM. THE 1.6 Cd FACTOR WAS USED IN THE ANALYSIS OF ANCHORAGE INTO WOOD SUBSTRATE.
6. THE OPENING SUBSTRATE MATERIALS (FRAMING, MASONRY, BUCKS) AND ATTACHMENT OF BUCKS TO THE SUBSTRATE ARE BY OTHERS AND SHALL BE VERIFIED BY THE ARCHITECT OR ENGINEER OF RECORD OR AS APPROVED BY THE AUTHORITY HAVING JURISDICTION (AHJ). BUCKING, OPENINGS, & BUCKING FASTENERS MUST BE PROPERLY DESIGNED & INSTALLED BY OTHERS IN ACCORDANCE WITH THE FBC TO TRANSFER SUPERIMPOSED LOADS TO THE STRUCTURE. WITH MASONRY OPENINGS, WOOD BUCKS ARE OPTIONAL.
7. DISSIMILAR MATERIALS THAT COME INTO CONTACT SHALL BE COATED OR OTHERWISE PROTECTED TO PREVENT GALVANIC REACTIONS. WOOD BUCKS, IF USED, SHALL BE PRESSURE TREATED, WITH EITHER A TREATMENT OR COATING COMPATIBLE WITH THIS PRODUCT.
8. ALL ANCHORS USED SHALL BE OF A MATERIAL OR HAVE A COATING COMPATIBLE WITH THE PRESSURE TREATED WOOD BUCKS AND ALL OTHER WINDOW MATERIALS.
9. ALL HARDWARE & FASTENERS SHALL BE IN ACCORDANCE WITH THESE DRAWINGS, OR AS APPROVED, SIGNED, AND SEALED BY A FLORIDA REGISTERED PROFESSIONAL ENGINEER ON A SITE-SPECIFIC BASIS.
10. SEALING AND FLASHING STRATEGIES FOR OVERALL WATER INFILTRATION RESISTANCE OF THE INSTALLED PRODUCT SHALL BE THE RESPONSIBILITY OF OTHERS AND ARE NOT ADDRESSED BY THIS DOCUMENT.
11. FOR ADDITIONAL REQUIREMENTS SEE GENERAL ANCHOR NOTES, SHEET 2.

DESIGN PRESSURE	IMPACT RATING
+70/-70	LARGE AND SMALL MISSILE IMPACT

**CONFIGURATION OPTIONS**

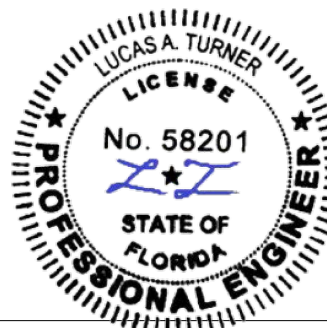
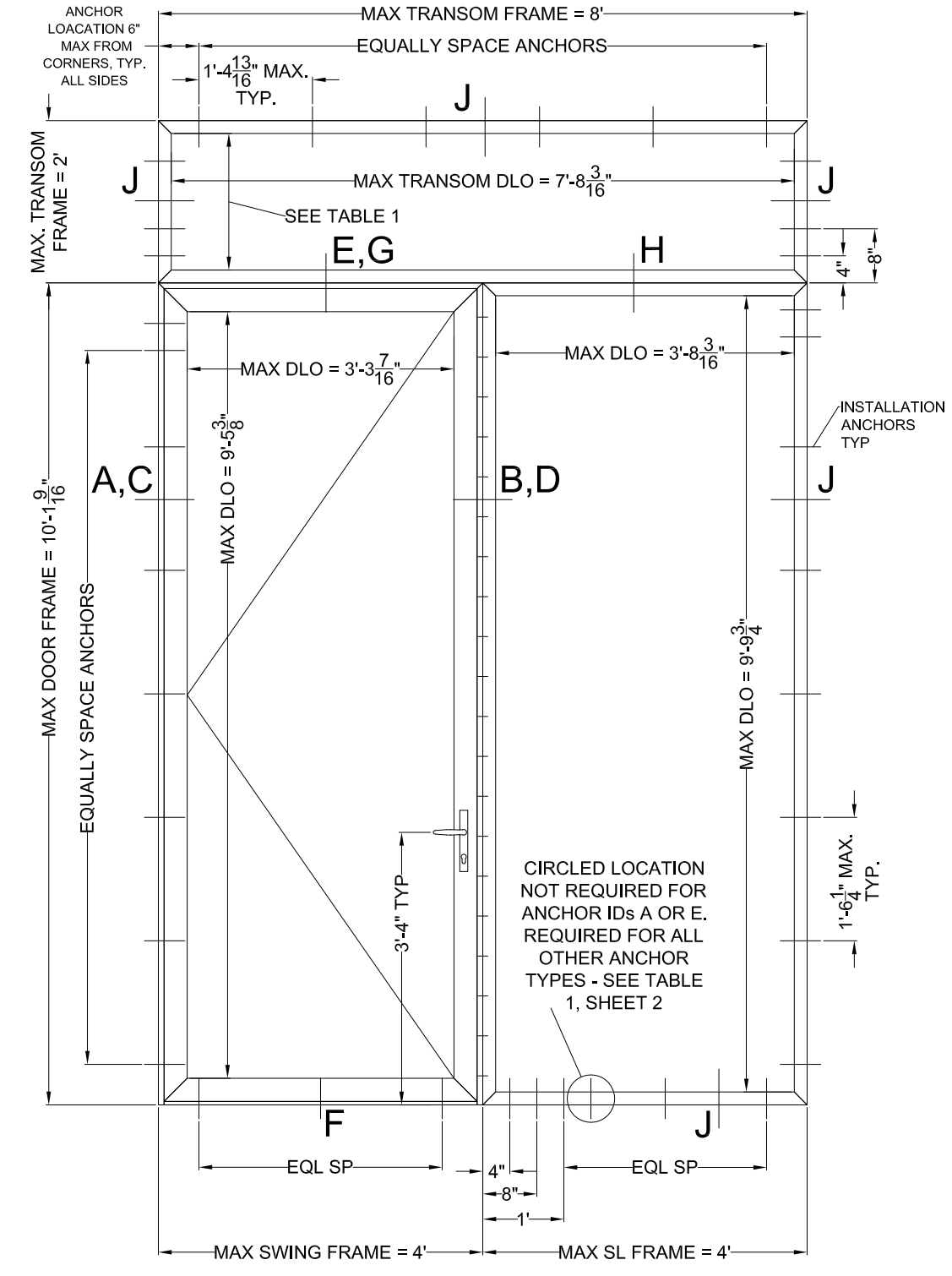
(ALL CONFIGS CAN BE OPPOSITE HANDED)



\* MAY BE MULLED INDEFINITELY WITH ADDITIONAL FIX 80i UNITS. SEE SEPARATE LUXVIEW APPROVAL FOR FIX 80i SIZE AND MULL REQUIREMENTS.

NOTE MAX. TRANSOM WIDTH = 8' FOR ALL CONFIGURATIONS

**LUXVIEW SWING 80i - OUTSWING DOOR**



5/9/2024 LUCAS TURNER FL PE 58201  
 TURNER ENGINEERING & CONSULTING, INC.  
 2428 OLD NATCHEZ TRACE TRL., CAMDEN, TN, 38320  
 PH 941-380-1574

Scale:  
 NOT TO SCALE

Sheet #:  
 1 OF 6

Drawing Title:  
 LUXVIEW SWING 80i - OUTSWING DOOR

Drawing Number:  
 FPA-SWING80i

Drawn By:  
 JAB

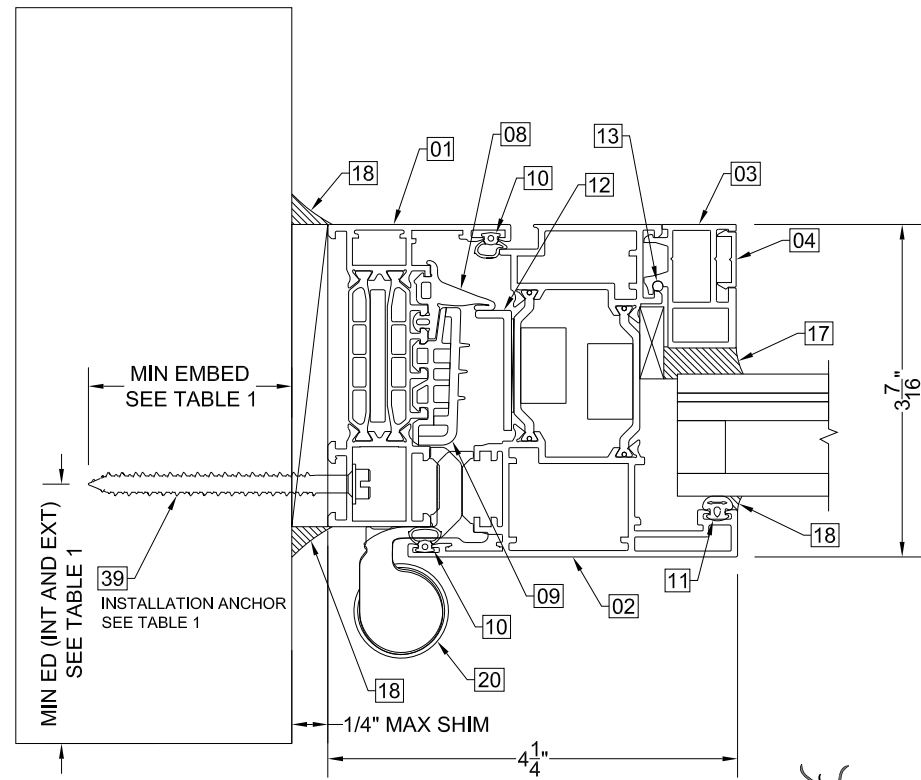
Revision:  
 00

Reviewed By:  
 CAC

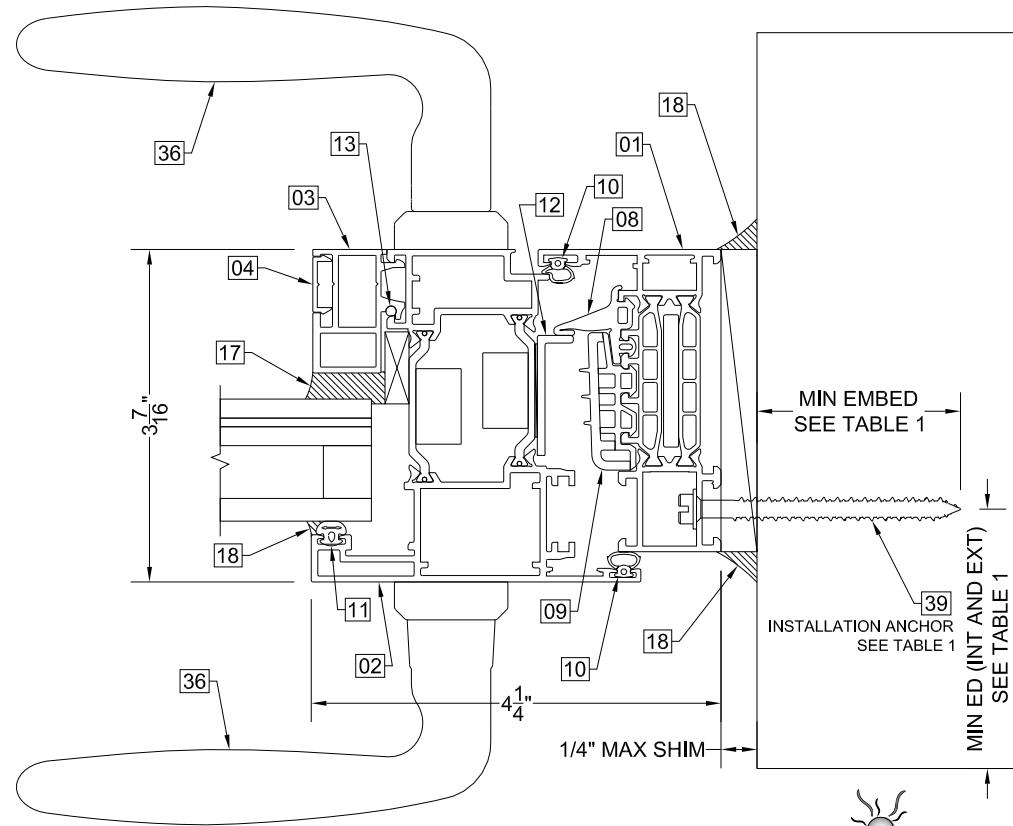
Date:  
 03MAY2024



LuxView Proprietary  
 Copyright 2024 LuxView LLC



**SECTION A**  
TYPICAL HINGE-SIDE SECTION DETAIL

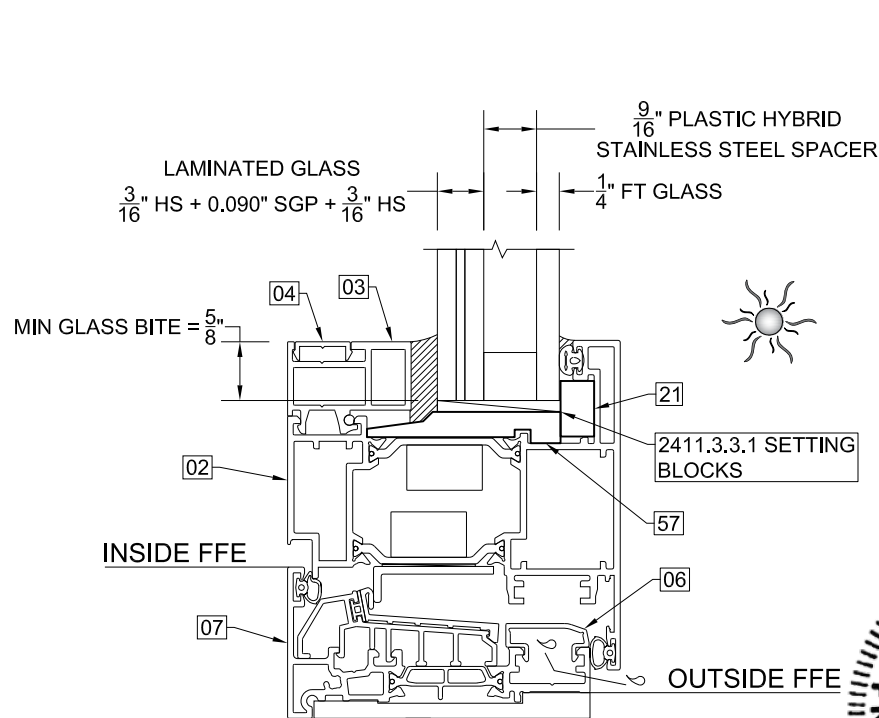


**SECTION B**  
TYPICAL HANDLE-SIDE SECTION DETAIL

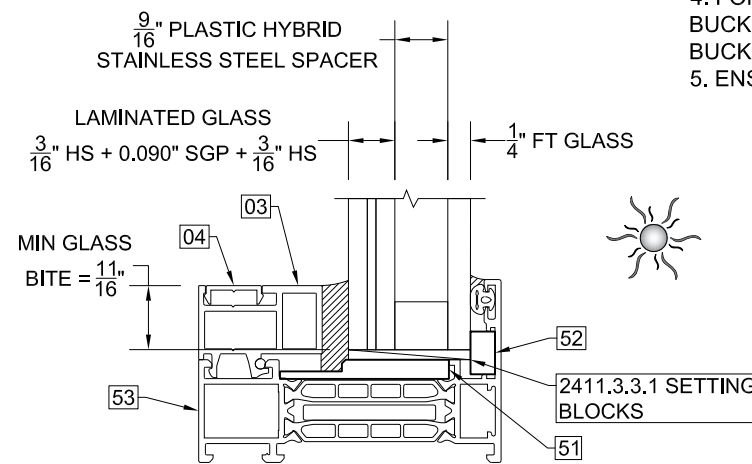
 **SYMBOL INDICATES EXTERIOR**

**GENERAL ANCHOR NOTES:**

1. INSTALL SHIMS AT EACH ANCHOR LOCATION WHERE A GAP OF 1/16" OR GREATER EXISTS BETWEEN PRODUCT FRAME AND SUBSTRATE.
2. SHIMS SHALL BE LOAD-BEARING (PLASTIC OR METALLIC) AND CAPABLE OF TRANSFERRING LOADS TO SUBSTRATE.
3. SPECIFIED ANCHOR EMBEDMENT TO SUBSTRATE SHALL BE BEYOND WALL FINISH OR STUCCO, BY OTHERS. FOR ATTACHMENT TO METAL SUBSTRATES ENSURE FULL THREAD ENGAGEMENT
4. FOR MASONRY WITH WOOD BUCKS LESS THAN 1-1/2" THICK, EMBEDMENT SHALL BE BEYOND WOOD BUCKS AND INTO MASONRY. WOOD BUCKS ARE OPTIONAL WITH MASONRY INSTALLATIONS WHERE MASONRY EDGE DISTANCE CONDITIONS ARE MET WITH NO BUCKS. WOOD BUCKS 1-1/2" THICK OR GREATER SHALL HAVE EMBEDMENT INTO THE WOOD BUCKS.
5. ENSURE 4" MIN. ON-CENTER SPACING BETWEEN ANY TWO INSTALLATION ANCHORS.

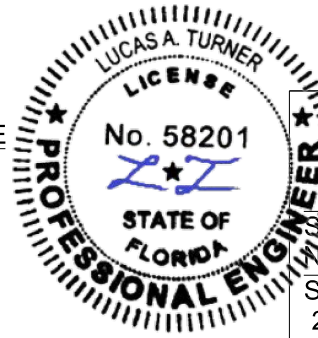


**TYPICAL OUTSWING GLAZING DETAIL**



**TYPICAL FIXED GLAZING DETAIL**

TABLE 1: INSTALLATION ANCHOR REQUIREMENTS TABLE				
NOTE: ALL ANCHORS TO BE PAN HEAD, HEX/WASHER HEAD, OR FLAT HEAD WITH SUPPLEMENTAL STAINLESS WASHER OF EQUIVALENT DIAMETER TO HEX/WASHER HEAD				
ANCHOR ID	SUBSTRATE TYPE	ANCHOR TYPE	MIN. EMBED.	MIN. EDGE DISTANCE
A	CONCRETE (3.05 KSI MIN)	1/4" DEWALT ULTRACON+	1-3/8"	2-1/2"
B	GROUT-FILLED CMU (ASTM C-90)	1/4" DEWALT ULTRACON+	1-3/4"	2-1/2"
C	HOLLOW CMU (ASTM C-90)	1/4" DEWALT ULTRACON+	1-1/4"	2-1/2"
D	2X MIN. SPRUCE-PINE-FIR WOOD (G=0.42 MIN.)	1/4" DEWALT ULTRACON+	1-3/4"	1"
E	16 GAUGE (0.060") MIN. STEEL STUD, 33KSI YIELD MIN., OR 1/8" ALUM. 6063-T5 MIN.	1/4"-14 HIL TI KWIK-FLEX OR TEKS SELF-DRILLING SCREW	FULL+ 3 THREADS	1/2"



5/9/2024 LUCAS TURNER FL PE 58201  
TURNER ENGINEERING & CONSULTING, INC.  
228 OLD NATCHEZ TRACE TR., CAMDEN, TN, 38320  
PH 941-380-1574

Scale:  
NOT TO SCALE  
Sheet #:  
2 OF 6

Drawing Title:  
LUXVIEW SWING 80i - OUTSWING DOOR

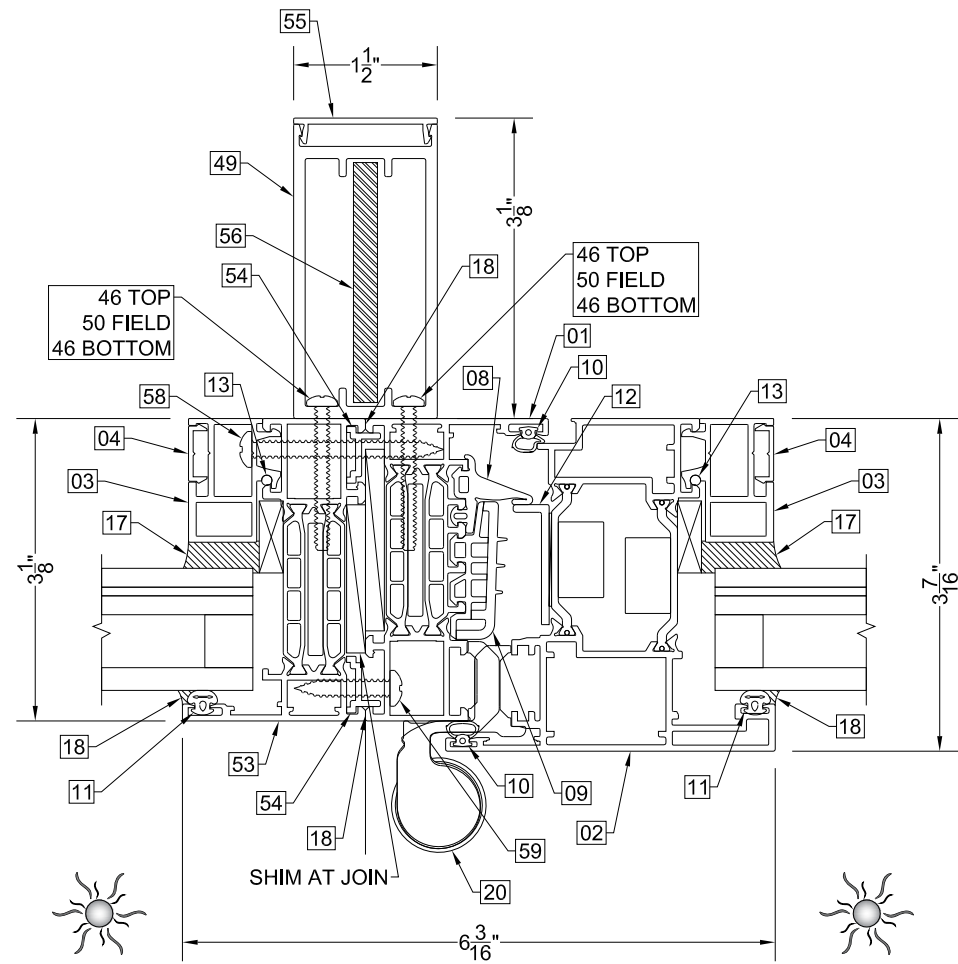
Drawing Number:  
FPA-SWING80i  
Drawn By:  
JAB

Revision:  
00  
Reviewed By:  
CAC

Date:  
03MAY2024

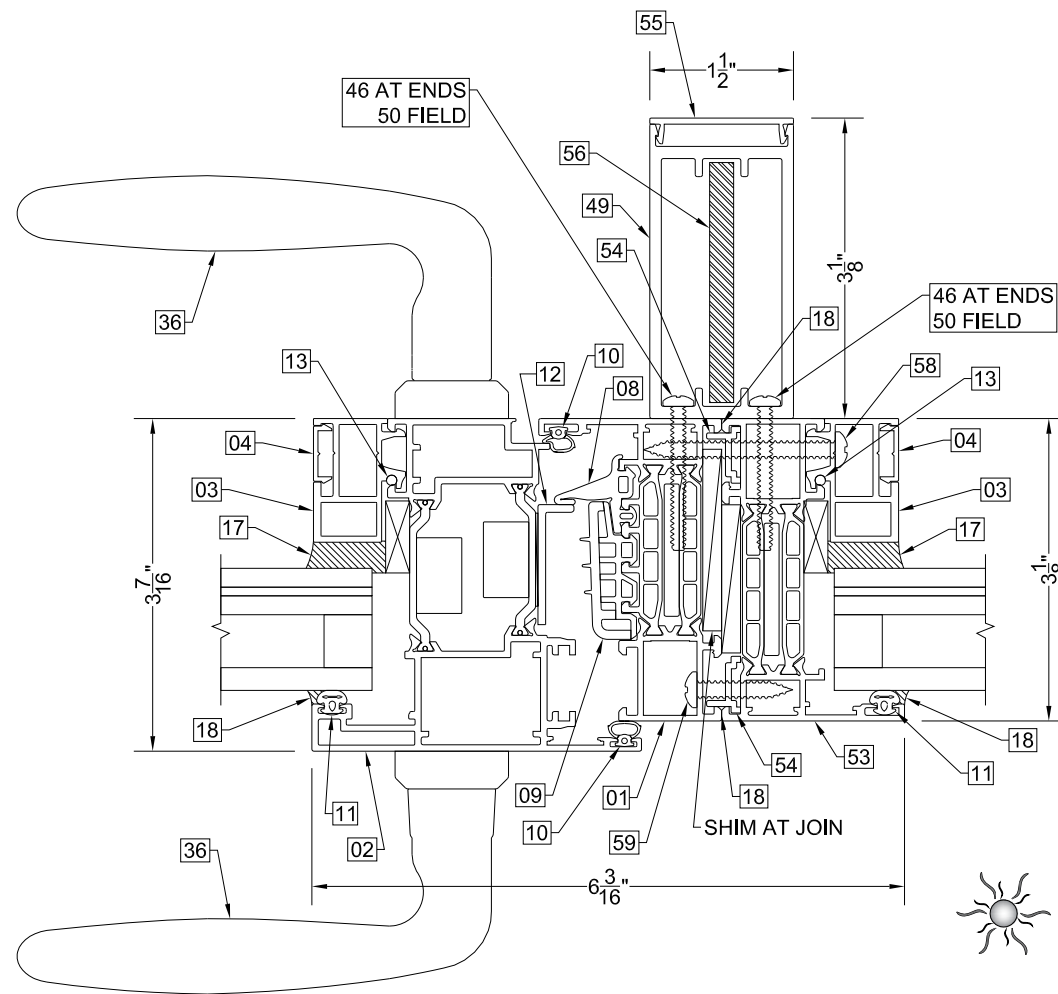
**LUXVIEW**

LuxView Proprietary  
Copyright 2024 LuxView LLC



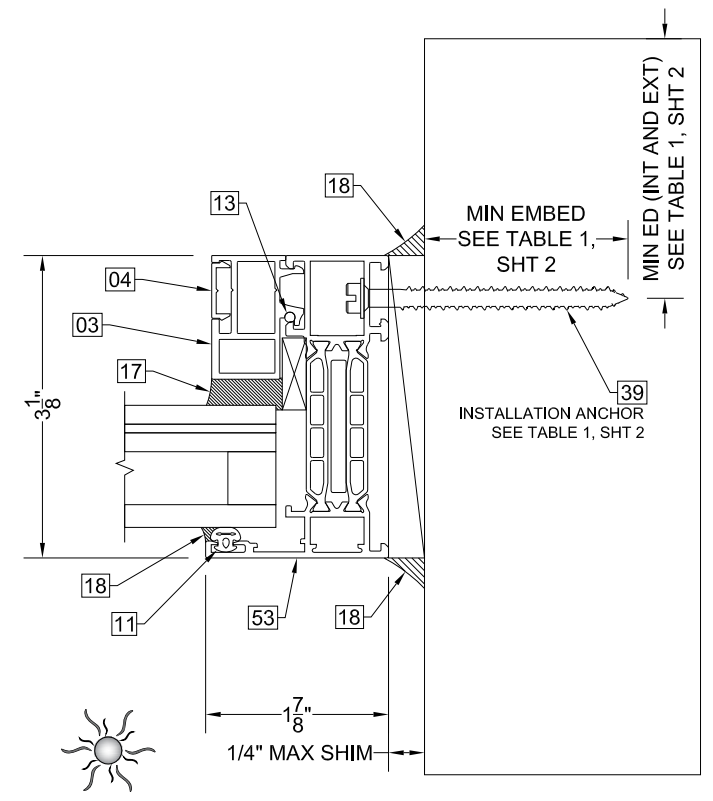
**SECTION C**

TYPICAL HINGE-SIDE SECTION DETAIL AT SIDELITE



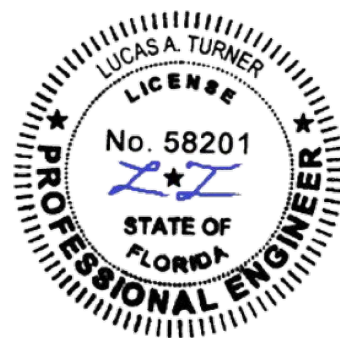
**SECTION D**

TYPICAL HANDLE-SIDE SECTION DETAIL AT SIDELITE



**SECTION J**

TYPICAL SIDELITE/TOPLITE SECTION DETAIL

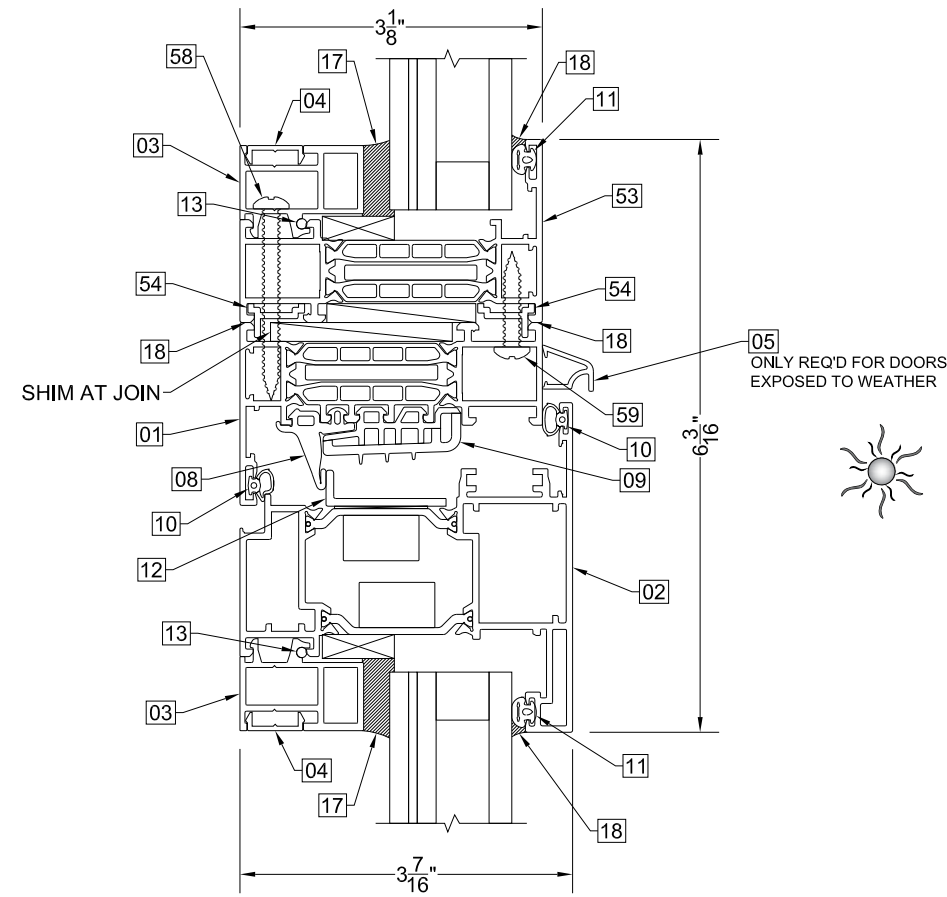
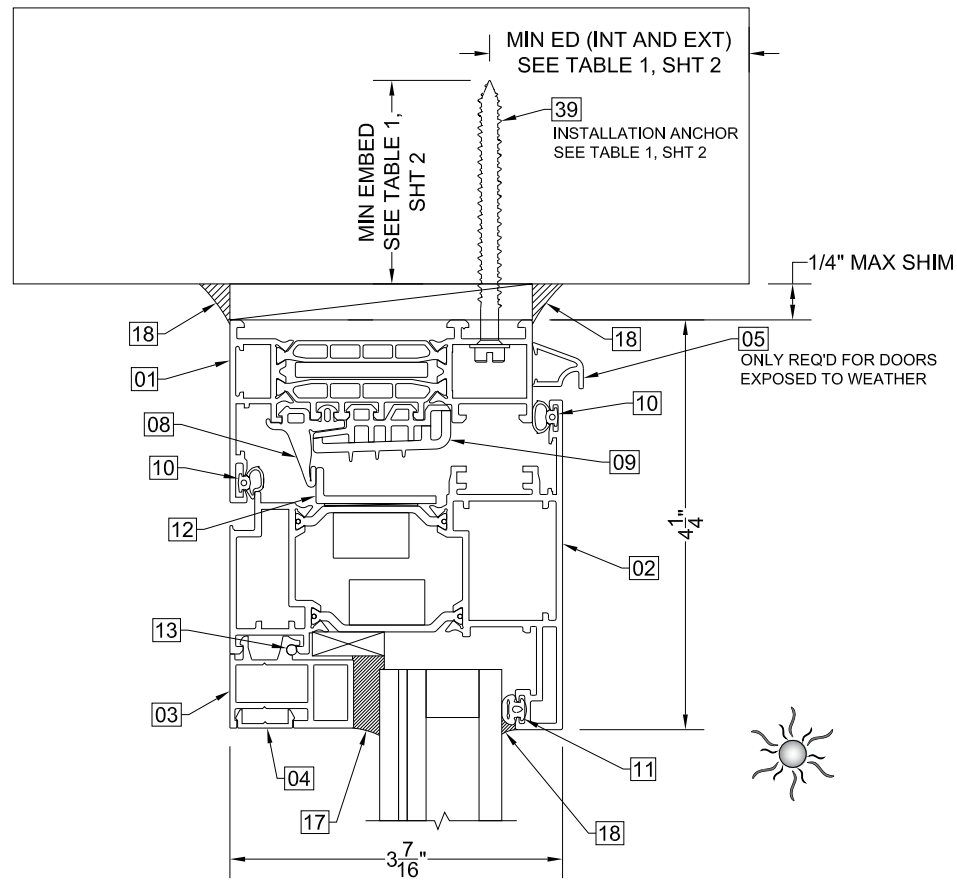


5/9/2024 LUCAS TURNER FL PE 58201 TURNER ENGINEERING & CONSULTING, INC. 2428 OLD NATCHEZ TRACE TRL., CAMDEN, TN, 38320 PH 941-380-1574		<b>Drawing Title:</b> LUXVIEW SWING 80i - OUTSWING DOOR	
<b>Scale:</b> NOT TO SCALE		<b>Drawing Number:</b> FPA-SWING80i	
<b>Sheet #:</b> 3 OF 6		<b>Drawn By:</b> JAB	<b>Reviewed By:</b> CAC
		<b>Revision:</b> 00	<b>Date:</b> 03MAY2024

**LUXVIEW**

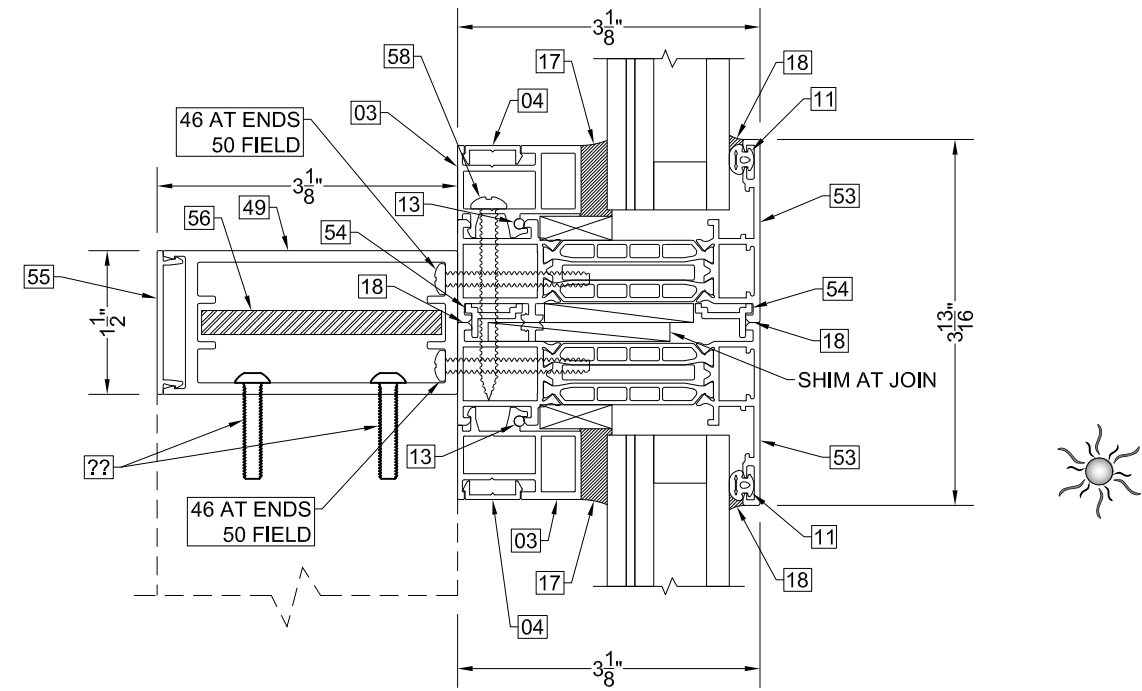
### SECTION E

TYPICAL SWING HEAD SECTION DETAIL



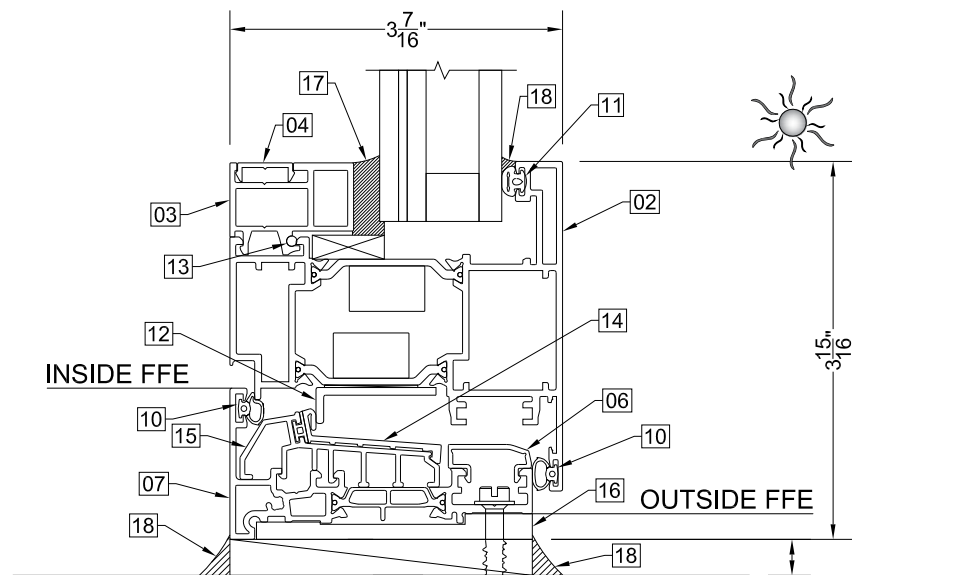
### SECTION G

TYPICAL SWING HEAD SECTION DETAIL AT TOPLITE



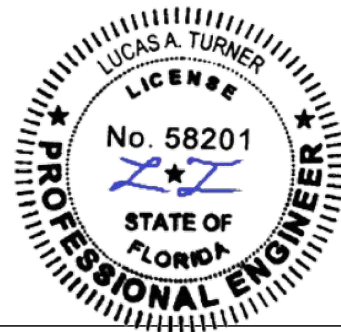
### SECTION H

TYPICAL SIDELITE SECTION DETAIL AT TOPLITE



### SECTION F

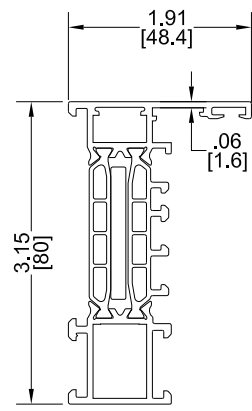
TYPICAL SWING HEAD SECTION DETAIL



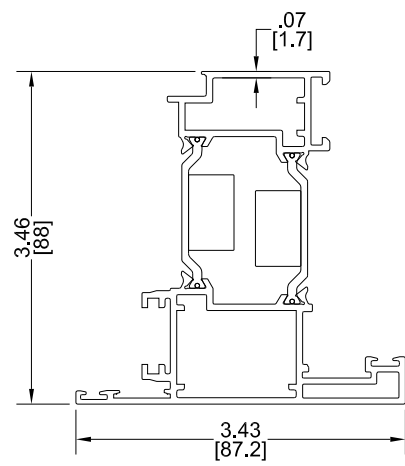
5/9/2024 LUCAS TURNER FL PE 58201 TURNER ENGINEERING & CONSULTING, INC. 2428 OLD NATCHEZ TRACE TRL., CAMDEN, TN, 38320 PH 941-380-1574		Drawing Title: <b>LUXVIEW SWING 80i - OUTSWING DOOR</b>	
Scale: NOT TO SCALE		Drawing Number: FPA-SWING80i	
Sheet #: 4 OF 6		Drawn By: JAB	Reviewed By: CAC
		Revision: 00	
		Date: 03MAY2024	



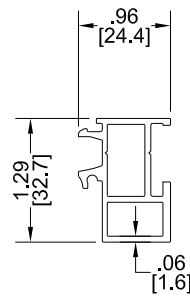
LuxView Proprietary  
Copyright 2024 LuxView LLC



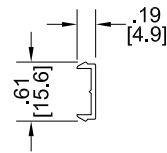
01



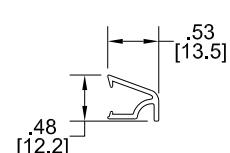
02



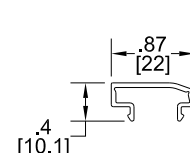
03



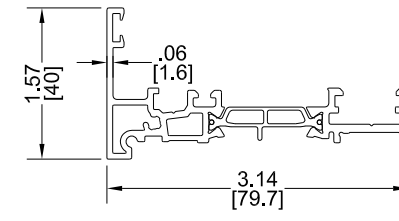
04



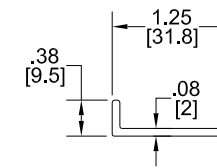
05



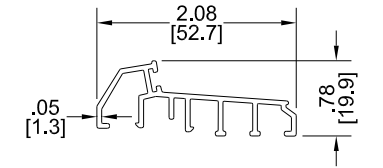
06



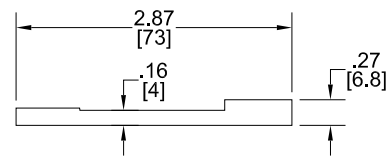
07



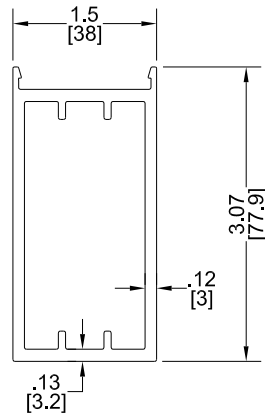
12



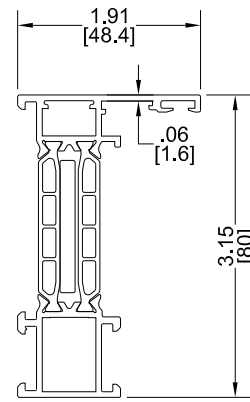
15



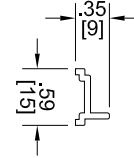
16



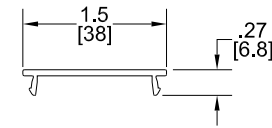
49



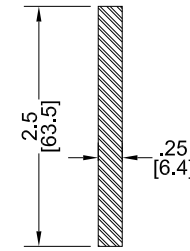
53



54



55



56



5/9/2024 LUCAS TURNER FL PE 58201  
TURNER ENGINEERING & CONSULTING, INC.  
2428 OLD NATCHEZ TRACE TRL., CAMDEN, TN, 38320  
PH 941-380-1574

Scale:  
NOT TO SCALE

Sheet #:  
5 OF 6

Drawing Title:  
LUXVIEW SWING 80i - OUTSWING DOOR

Drawing Number:  
FPA-SWING80i

Drawn By:  
JAB

Reviewed By:  
CAC

Revision:  
00

Date:  
03MAY2024

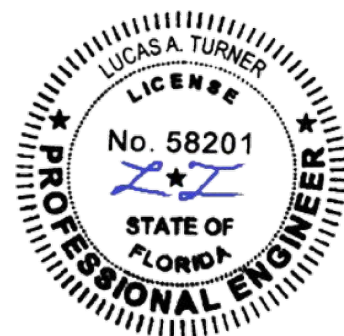
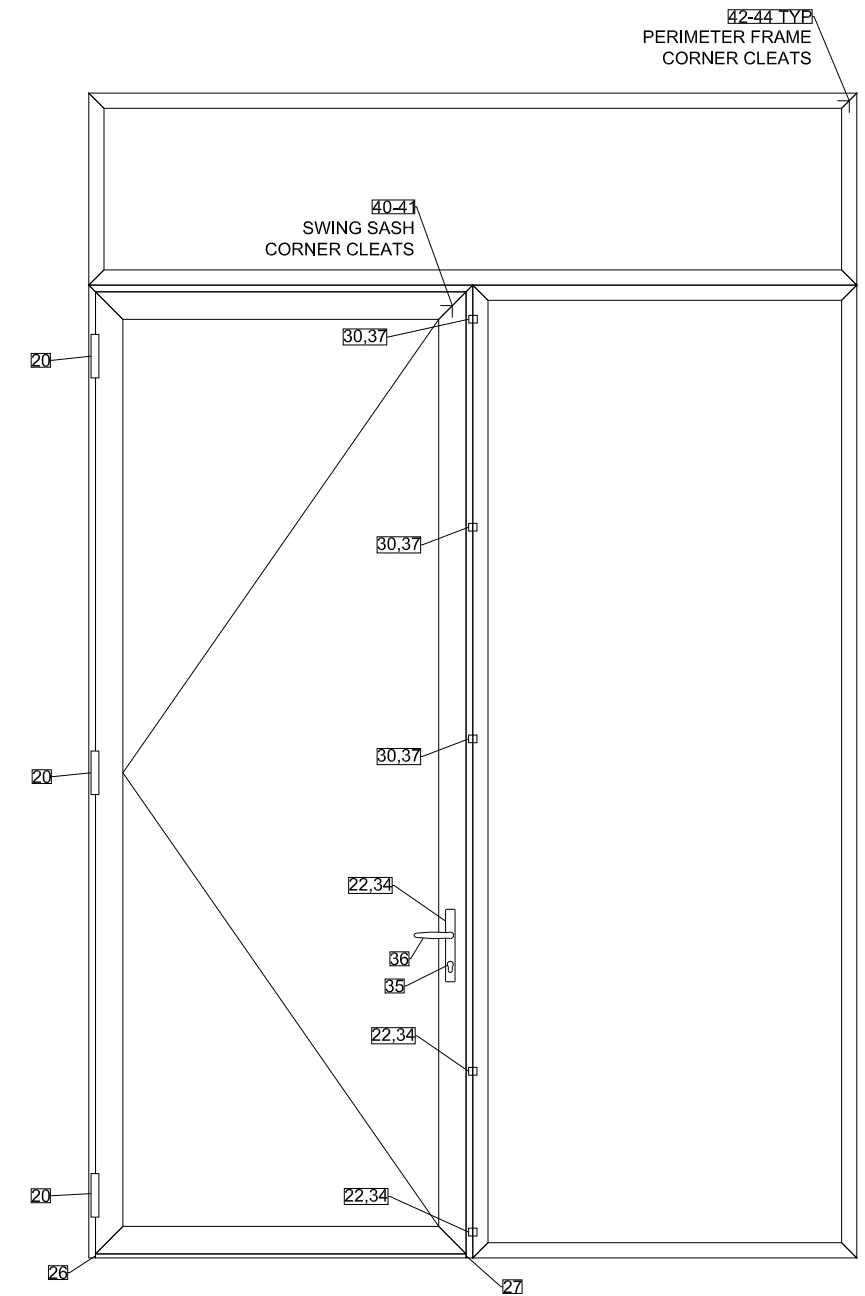
LUXVIEW

LuxView Proprietary  
Copyright 2024 LuxView LLC

Bill Of Materials			
TAG	Part #	Description	Material
1	LUX-SD80T-0003	80mm Operable Frame	6063-T5 Alum w/ Polyamide Strut
2	LUX-SD80T-0001	80mm Operable Sash	6063-T5 Alum w/ Polyamide Strut
3	LUX-GZB-0004	Glazing Bead	6063-T6 Alum
4	LUX-COV-0020	Glazing Bead Cover	6063-T5 Alum
5	LUX-EXT-0011	Drip Cap	6063-T5 Alum
6	LUX-COV-0018	Threshold Cap	6063-T5 Alum
7	LUX-SD80T-0002	Threshold	6063-T5 Alum w/ Polyamide Strut
8	LUX-GKT-0042	Central Gasket Extension	EPDM
9	LUX-GKT-0043	Central Gasket	EPDM
10	LUX-GKT-0008	Sealing Gasket	EPDM
11	LUX-GKT-0001	Sealing Gasket	EPDM
12	LUX-SD80T-0013	Sealing Angle	PVC
13	LUX-GKT-0056	Cord Gasket	EPDM
14	LUX-GKT-0057	Threshold Gasket	EPDM
15	LUX-COV-0033	Threshold Gasket Holder	PVC
16	LUX-SD80T-0012	Threshold Support	HDPE
17	GE-SSG4600	Structural Silicone	Silicone
18	DOW-795	Silicone	Silicone
19	-	-	-
20	LUX-HIN-0005	Hinge Kit	Aluminum
21	LUX-PRK-0056	Setting Block - Swing	Nylon6
22	LUX-SD80T-0011	Lockset Protector	Nylon6
23	LUX-HDL-0055	Connecting Rod	Aluminum
24	LUX-HDL-0058	Mortise Lockset	Stainless Steel Assembly
25	LUX-FST-0027	10-32 X3/8 Hex Drive Flat head, 82deg	18-8 Stainless Steel
26	LUX-SD80T-0014	Swing Threshold End Cap - Left	Nylon6
27	LUX-SD80T-0015	Swing Threshold End Cap - Right	Nylon6
28	LUX-FST-0028	M4X30mm Hex Drive Pan	18-8 Stainless Steel
29	LUX-FST-0029	M2.9X16mm Ph. round Pan head	18-8 Stainless Steel
30	LUX-HDL-0041	Striker	Stainless Steel
31	LUX-FST-0031	#8 X 2" Ph. Flat	18-8 Stainless Steel
32	LUX-FST-0032	#10-32 X 1/4" Button Head Hex	18-8 Stainless Steel
33	LUX-FST-0033	-	18-8 Stainless Steel
34	LUX-STK-0009	Door Strike	304 Stainless Steel
35	-	Locking Cylinder	Steel
36	LUX-HDL-0060	Swing Handle Kit Primary	Brass

37	LUX-STK-0010	Mushroom Cam	Stainless steel
38	LUX-FST-0036	#8 X3/4" Sheet metal PH. Flat Head	18-8 Stainless Steel
39	See Table 1	Installation Anchor	See Table 1
40	LUX-CLT-0043	Primary Panel Cleat	6063-T5 Alum
41	LUX-CLT-0044	Secondary Panel Cleat	6063-T5 Alum
42	LUX-CLT-0002	Primary Frame Cleat	6063-T5 Alum
43	LUX-CLT-0003	Secondary Frame Cleat	6063-T5 Alum
44	LUX-CLT-0014	Frame Alignment Cleat	Cast Aluminum
45	LUX-FST-0042	Integral Mullion Screw, #10X1.5", Pan	18-8 Stainless Steel
46	LUX-FST-0043	Mullion anchor screw, #14X1.5", Pan	18-8 Stainless Steel
47	LUX-CLT-0045	Glazing Bead Cleat	6061-T6 Alum
48	LUX-FST-0039	Glazing Bead Cleat Screw #10x.5" Pan	18-8 Stainless Steel
49	LUX-EXT-0045	Medium Reinforcement	6063-T6 Alum
50	LUX-FST-0041	Join Mull Screws, #8x1.5" Pan	18-8 Stainless Steel
51	LUX-PRK-0049	Glazing Wedge - Fixed	Nylon 6
52	LUX-PRK-0036	Setting Block - Fixed	Nylon 6
53	LUX-FX80-0001	Window Frame	6063-T5 Alum w/ Polyamide Strut
54	LUX-EXT-0013	Join Mull Alingment Clip	6063-T5 Alum
55	LUX-EXT-0048	Reinforcement Cover	6063-T5 Alum
56	-	.25" x 2.5" SS Bar	304 Stainless Steel
57	LUX-PRK-0037	Glazing Wedge - Swing	Nylon 6
58	LUX-FST-0038	Join Mull Screws #10x2" Pan	18-8 Stainless Steel
59	LUX-FST-0054	Join Mull Screws #10x1" Pan	18-8 Stainless Steel
60	LUX-FST-0055	T-Bar Join Screws #10-32x1" Pan	18-8 Stainless Steel

# HARDWARE CONFIGURATION



5/9/2024 LUCAS TURNER FL PE 58201  
TURNER ENGINEERING & CONSULTING, INC.  
2428 OLD NATCHEZ TRACE TRL., CAMDEN, TN, 38320  
PH 941-380-1574

Scale:  
NOT TO SCALE

Sheet #:  
6 OF 6

Drawing Title:  
LUXVIEW SWING 80i - OUTSWING DOOR

Drawing Number:  
FPA-SWING80i

Drawn By:  
JAB

Reviewed By:  
CAC

Revision:  
00

Date:  
03MAY2024

# LUXVIEW

LuxView Proprietary  
Copyright 2024 LuxView LLC