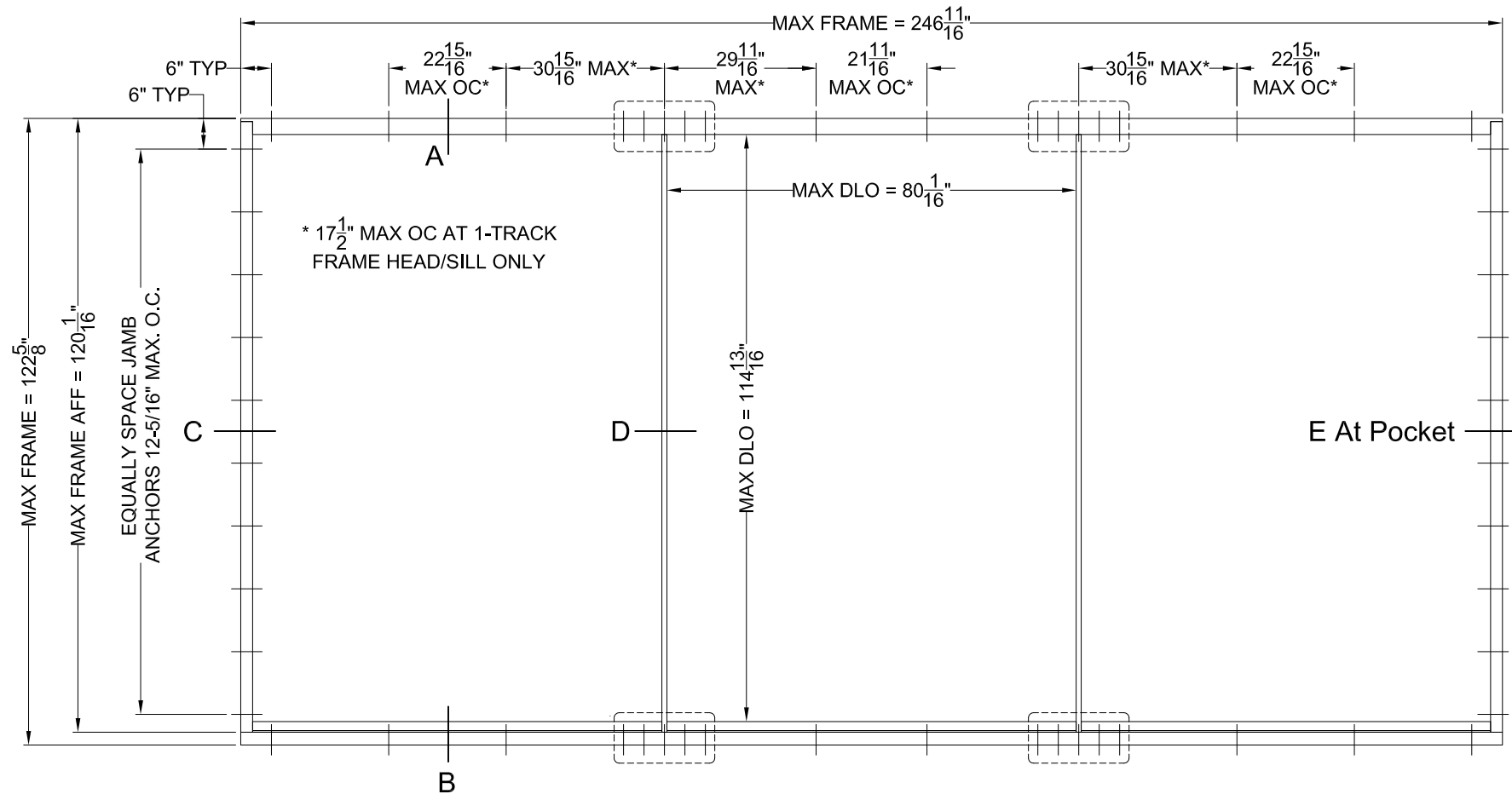


GENERAL NOTES

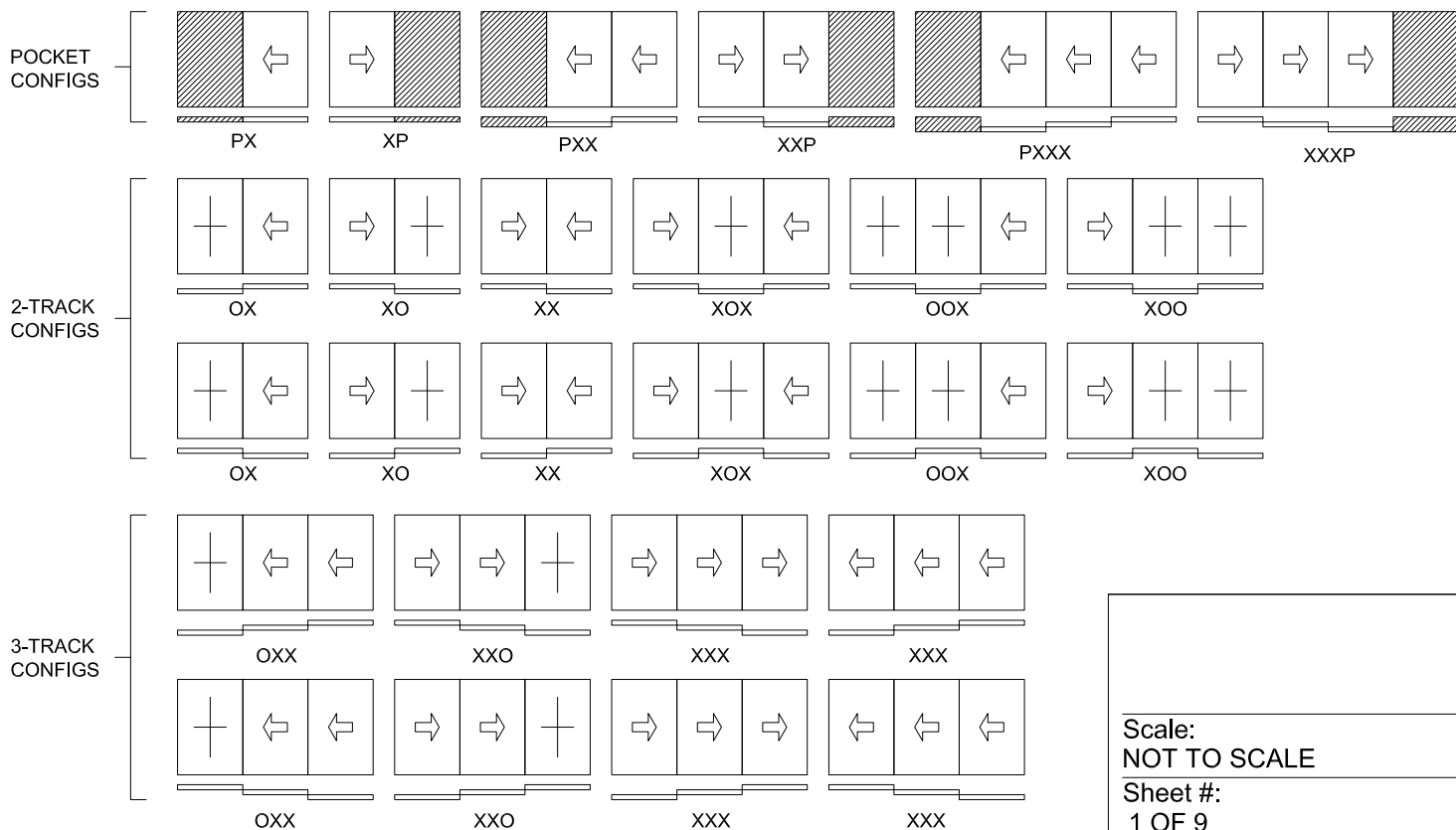
1. THE PRODUCT SHOWN HEREIN CONSTRUCTED FROM LUXVIEW THERMALLY BROKEN ALUMINUM FRAMES HAS BEEN TESTED TO TAS201/202/203-94, AND MEETS THE REQUIREMENTS OF THE FLORIDA BUILDING CODE, 8TH EDITION (2023), INCLUDING THE HIGH VELOCITY HURRICANE ZONE.
2. THIS PRODUCT IS LARGE AND SMALL MISSILE IMPACT RESISTANT AND DOES NOT REQUIRE THE USE OF IMPACT PROTECTIVE DEVICES (SHUTTERS) IN WINDBORNE DEBRIS REGIONS.
3. THE DESIGN PRESSURES INDICATED IN THIS DRAWING ARE AS LIMITED BY ASTM E-1300 GLASS TABLES, AND TESTED WATER, STRUCTURAL, AND CYCLIC PRESSURES.
4. THIS DOCUMENT ADDRESSES PRODUCT ANCHORAGE TO ACHIEVE THE INDICATED DESIGN PRESSURES AT THE INDICATED SIZES, IN THE CONFIGURATION SHOWN IN THE ELEVATIONS. INSTALL PRODUCTS WITH MAXIMUM SHIM GAP, MINIMUM EDGE DISTANCE AND EMBEDMENT, AND WITH FASTENER TYPE AS SHOWN AS INDICATED IN TABLE 1, SHEET 2. FOR FULL PRODUCT CONSTRUCTION DETAILS SEE INTERTEK TEST REPORT Q8315.04-550-18-r0
5. THE 4/3 ALLOWABLE STRESS INCREASE FACTOR (SHORT-TERM INCREASE FACTOR) HAS NOT BEEN USED IN THE ANCHOR ANALYSIS FOR THIS SYSTEM. THE 1.6 Cd FACTOR WAS USED IN THE ANALYSIS OF ANCHORAGE INTO WOOD SUBSTRATE.
6. THE OPENING SUBSTRATE MATERIALS (FRAMING, MASONRY, BUCKS) AND ATTACHMENT OF BUCKS TO THE SUBSTRATE ARE BY OTHERS AND SHALL BE VERIFIED BY THE ARCHITECT OR ENGINEER OF RECORD OR AS APPROVED BY THE AUTHORITY HAVING JURISDICTION (AHJ). BUCKING, OPENINGS, & BUCKING FASTENERS MUST BE PROPERLY DESIGNED & INSTALLED BY OTHERS IN ACCORDANCE WITH THE FBC TO TRANSFER SUPERIMPOSED LOADS TO THE STRUCTURE. WITH MASONRY OPENINGS, WOOD BUCKS ARE OPTIONAL.
7. DISSIMILAR MATERIALS THAT COME INTO CONTACT SHALL BE COATED OR OTHERWISE PROTECTED TO PREVENT GALVANIC REACTIONS. WOOD BUCKS, IF USED, SHALL BE PRESSURE TREATED, WITH EITHER A TREATMENT OR COATING COMPATIBLE WITH THIS PRODUCT.
8. ALL ANCHORS USED SHALL BE OF A MATERIAL OR HAVE A COATING COMPATIBLE WITH THE PRESSURE TREATED WOOD BUCKS AND ALL OTHER WINDOW MATERIALS.
9. ALL HARDWARE & FASTENERS SHALL BE IN ACCORDANCE WITH THESE DRAWINGS, OR AS APPROVED, SIGNED, AND SEALED BY A FLORIDA REGISTERED PROFESSIONAL ENGINEER ON A SITE-SPECIFIC BASIS.
10. SEALING AND FLASHING STRATEGIES FOR OVERALL WATER INFILTRATION RESISTANCE OF THE INSTALLED PRODUCT SHALL BE THE RESPONSIBILITY OF OTHERS AND ARE NOT ADDRESSED BY THIS DOCUMENT.
11. FOR ADDITIONAL REQUIREMENTS SEE GENERAL ANCHOR NOTES, THIS SHEET.

LUXVIEW SLIDE 54i - MINIMAL MULTISLIDE DOOR



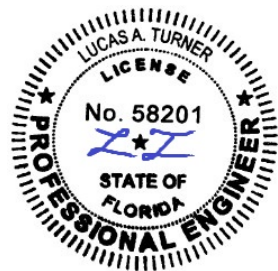
DESIGN PRESSURE	IMPACT RATING
+50/-65	LARGE AND SMALL MISSILE IMPACT

TYP. ELEVATION



GENERAL ANCHOR NOTES:

1. INSTALL ANCHORS AS INDICATED IN DETAILS ON SHEETS 2 THROUGH 7 AT EACH LOCATION SHOWN IN THE ELEVATION ON SHEET 1. USE QUANTITIES OF ANCHORS AT EACH LOCATION WITH PATTERNS AS SHOWN IN DETAILS.
2. INSTALL SHIMS AT EACH ANCHOR LOCATION WHERE A GAP OF 1/16" OR GREATER EXISTS BETWEEN PRODUCT FRAME AND SUBSTRATE.
3. SHIMS SHALL BE LOAD-BEARING (PLASTIC OR METALLIC) AND CAPABLE OF TRANSFERRING LOADS TO SUBSTRATE.
4. SPECIFIED ANCHOR EMBEDMENT TO SUBSTRATE SHALL BE BEYOND WALL FINISH OR STUCCO, BY OTHERS. FOR ATTACHMENT TO METAL SUBSTRATES ENSURE FULL THREAD ENGAGEMENT THROUGH METAL WALL WITH MIN. 3 THREADS BEYOND.
5. FOR MASONRY WITH WOOD BUCKS LESS THAN 1-1/2" THICK, EMBEDMENT SHALL BE BEYOND WOOD BUCKS AND INTO MASONRY. WOOD BUCKS ARE OPTIONAL WITH MASONRY INSTALLATIONS WHERE MASONRY EDGE DISTANCE CONDITIONS ARE MET WITH NO BUCKS. WOOD BUCKS 1-1/2" THICK OR GREATER SHALL HAVE EMBEDMENT INTO THE WOOD BUCKS.
6. ENSURE 4" MIN. ON-CENTER SPACING BETWEEN ANY TWO INSTALLATION ANCHORS UNLESS OTHERWISE DETAILED IN THIS DRAWING (INSTALL ANCHORS IN ALL FOUR HOLES OF THE BRACKETS ITEMS 14 AND 15).



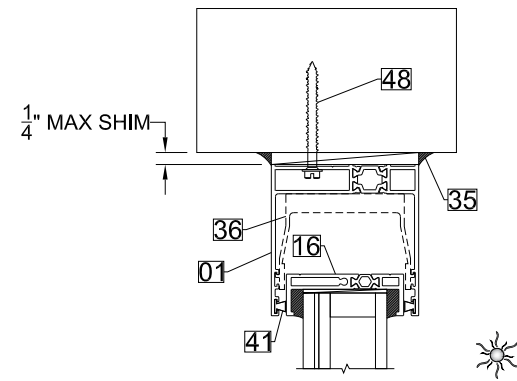
7/3/2024
 Lucas A. Turner
 FL P.E. #58201
 Turner Engineering & Consulting, Inc.
 2428 Old Natchez Trc Trl
 Camden, TN 38320
 941-380-1574

Drawing Title: LUXVIEW SLIDE 54i - MINIMAL MULTISLIDE DOOR	
Scale: NOT TO SCALE	Drawing Number: FPA-SLIDE54i
Sheet #: 1 OF 9	Revision: 00
Drawn By: CAC	Reviewed By: JAB
	Date: 24JUN2024

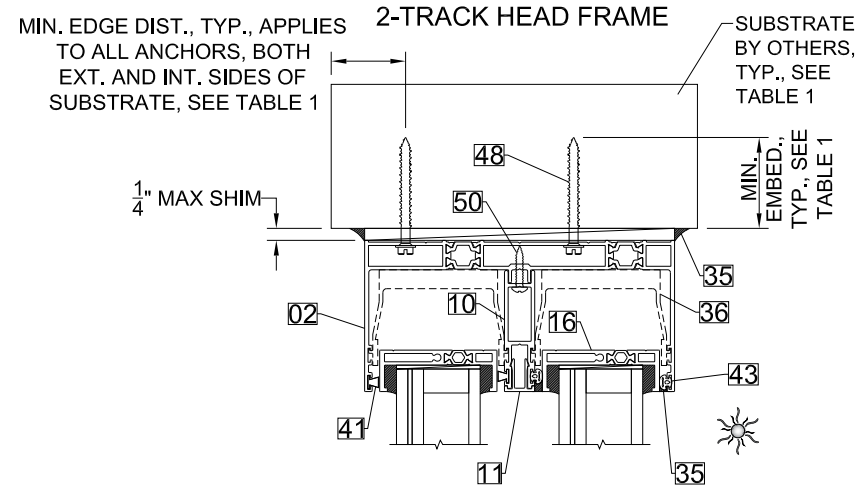
LUXVIEW

LuxView Proprietary
 Copyright 2024 LuxView LLC

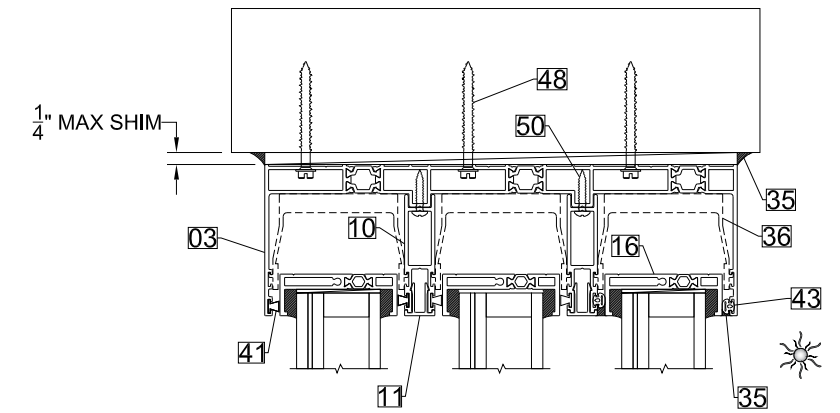
DETAIL A1
1-TRACK HEAD FRAME



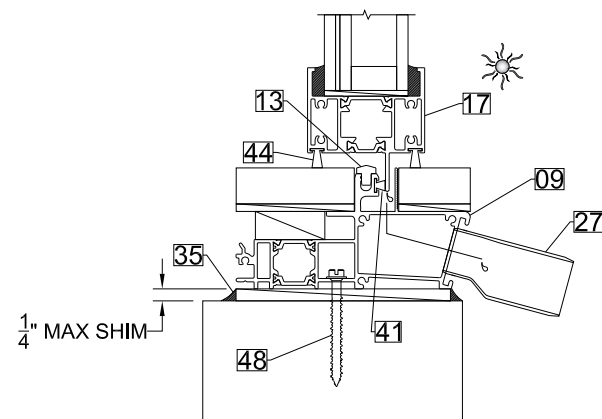
DETAIL A2



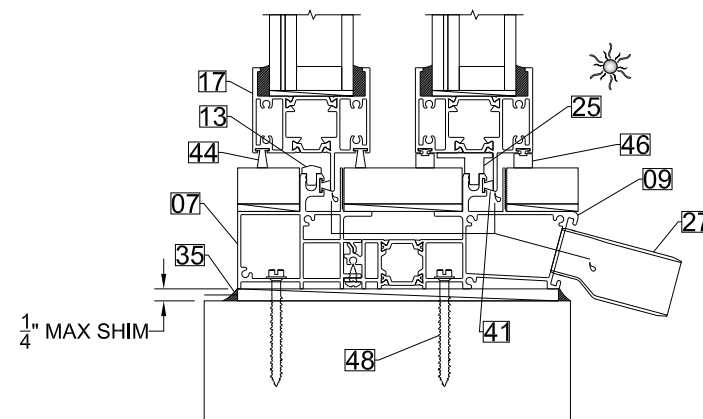
DETAIL A3
3-TRACK HEAD FRAME



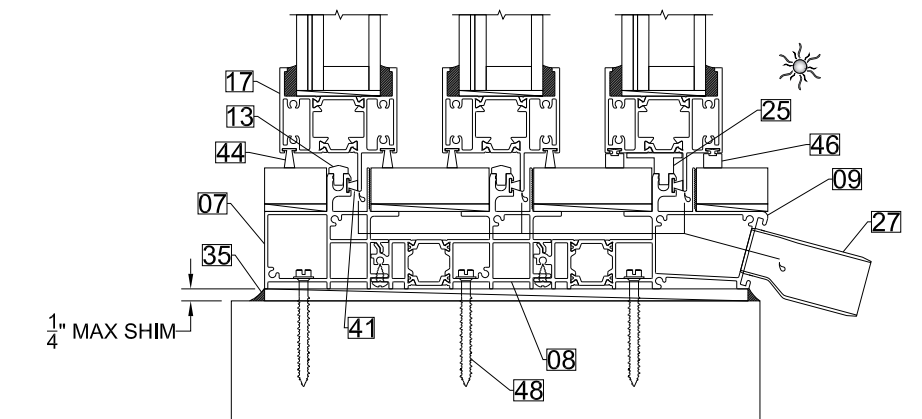
DETAIL B1
1-TRACK SILL FRAME



DETAIL B2
2-TRACK SILL FRAME



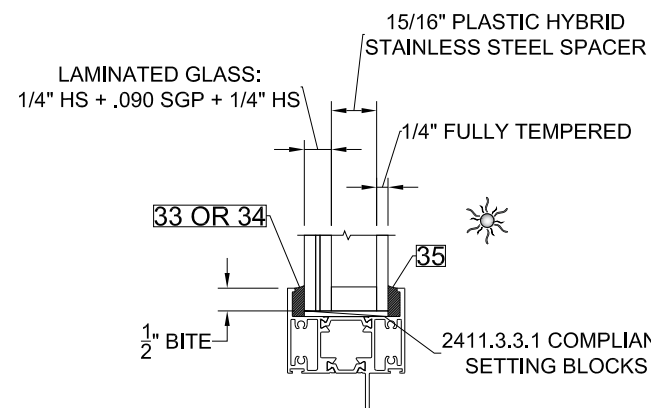
DETAIL B3
3-TRACK SILL FRAME



 SYMBOL INDICATES EXTERIOR

TABLE 1: INSTALLATION ANCHOR REQUIREMENTS TABLE
NOTE: ALL ANCHORS WHERE ATTACHING THROUGH ITEM 14 OR 15 BRACKETS TO BE FLAT HEAD. ALL OTHER LOCATIONS TO BE PAN HEAD, HEX/WASHER HEAD, OR FLAT HEAD WITH SUPPLEMENTAL STAINLESS WASHER OF EQUIVALENT DIAMETER TO HEX/WASHER HEAD.

SUBSTRATE TYPE	ANCHOR TYPE	MIN. EMBED.	MIN. EDGE DISTANCE
CONCRETE (3.05 KSI MIN)	1/4" DEWALT ULTRACON+	1-3/8"	2-1/2" AT 1-TRACK FRAME 1" AT 2 OR 3 TRACK FRAME
GROUT-FILLED CMU (ASTM C-90)	1/4" DEWALT ULTRACON+	1-3/4"	2-1/2" AT 1-TRACK FRAME 1" AT 2 OR 3 TRACK FRAME
HOLLOW CMU (ASTM C-90)	1/4" DEWALT ULTRACON+	1-1/4"	2-1/2"
2X MIN. SPRUCE-PINE-FIR WOOD (G=0.42 MIN.)	1/4" DEWALT ULTRACON+	1-3/8"	1"
16 GAUGE (0.060") MIN. STEEL STUD, 33KSI YIELD MIN., OR 1/8" ALUM. 6063-T5 MIN.	1/4"-14 HILTI KWIK-FLEX OR ITW TEKS SELF-DRILLING SCREW	FULL + 3 THREADS	1/2"



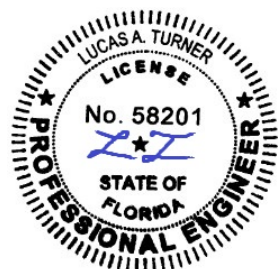
TYPICAL GLAZING DETAIL

Scale:
NOT TO SCALE
Sheet #:
2 OF 9

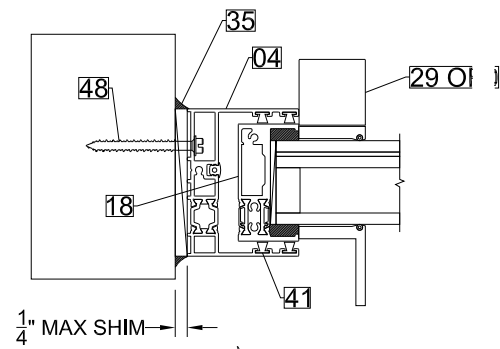
Drawing Title:
LUXVIEW SLIDE 54i - MINIMAL MULTISLIDE DOOR

Drawing Number: FPA-SLIDE54i
Revision: 00
Date: 24JUN2024
Drawn By: CAC
Reviewed By: JAB

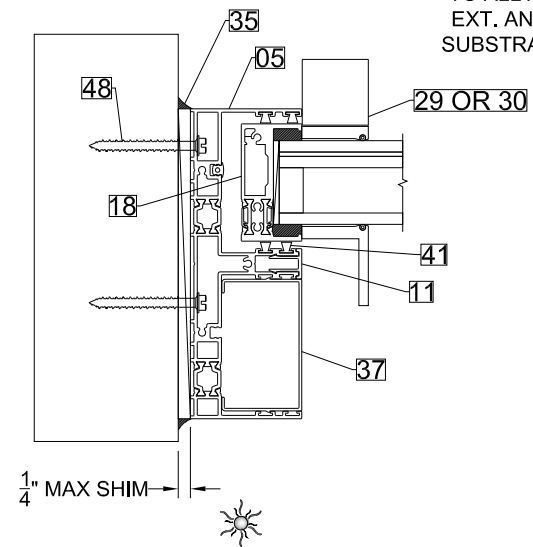
LUXVIEW



7/3/2024
Lucas A. Turner
FL P.E. #58201
Turner Engineering & Consulting, Inc.
2428 Old Natchez Trc Trl
Camden, TN 38320
941-380-1574

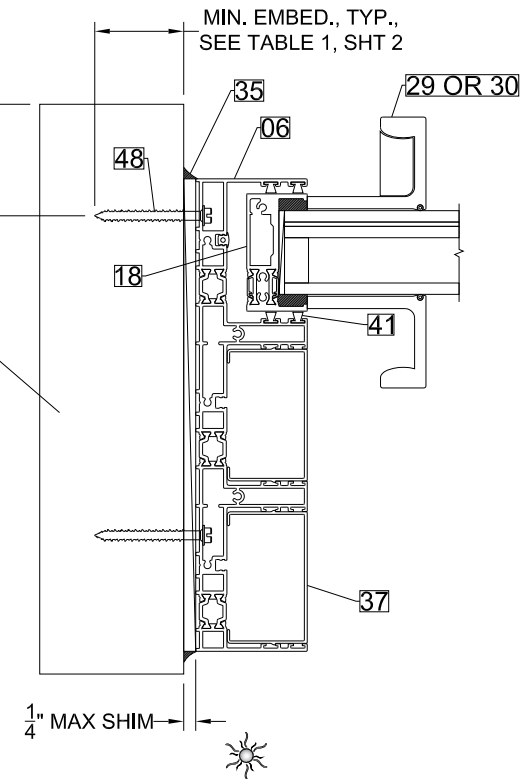


DETAIL C1
1-TRACK WITH MONORAIL JAMB

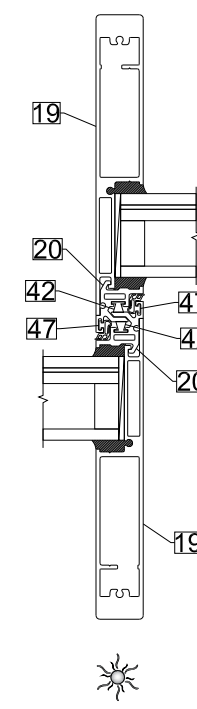


DETAIL C2
2-TRACK WITH STANDARD JAMB

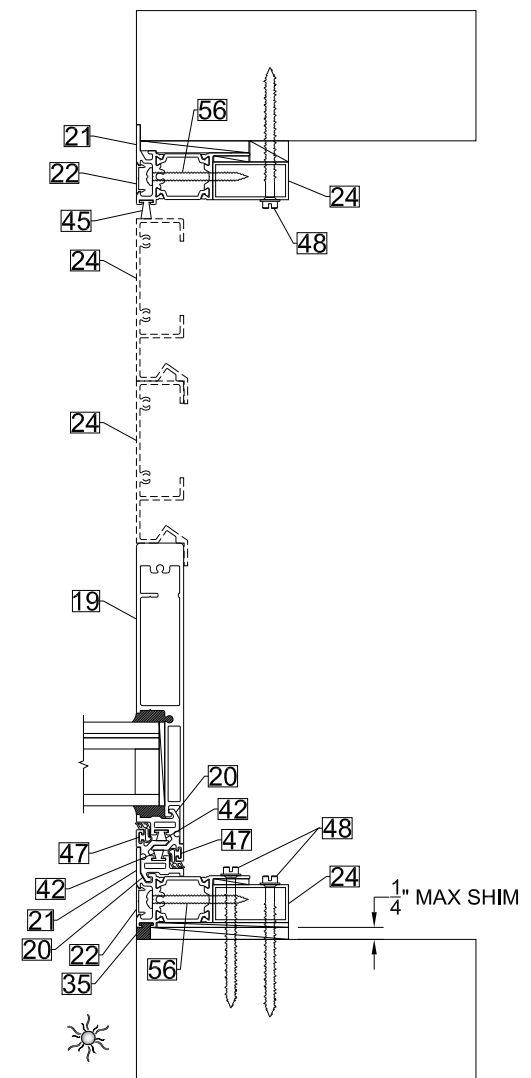
MIN. EDGE DIST., TYP., APPLIES TO ALL ANCHORS, BOTH EXT. AND INT. SIDES OF SUBSTRATE, SEE TABLE 1



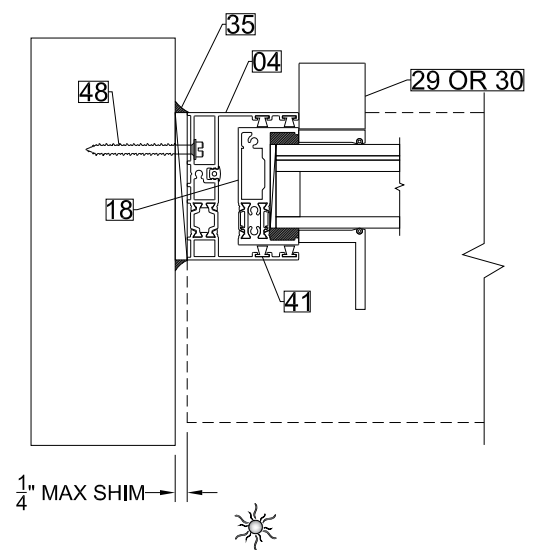
DETAIL C3
3-TRACK WITH STANDARD JAMB



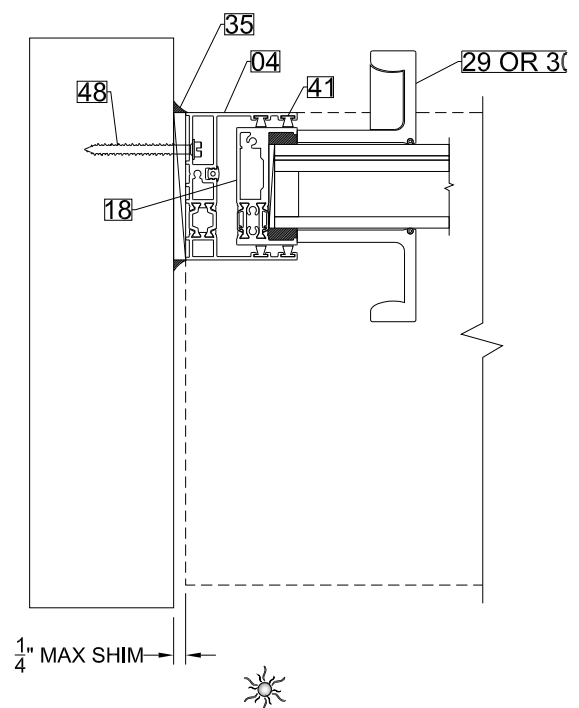
DETAIL D
TYPICAL INTERLOCK JOINT



DETAIL E
TYPICAL POCKET CLOSEOUT



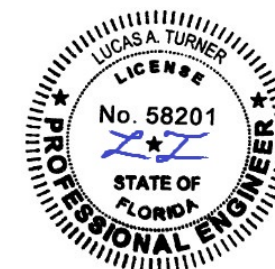
DETAIL C2
2-TRACK WITH OPTIONAL MONORAIL JAMB



DETAIL C3
3-TRACK WITH OPTIONAL MONORAIL JAMB

 SYMBOL INDICATES EXTERIOR

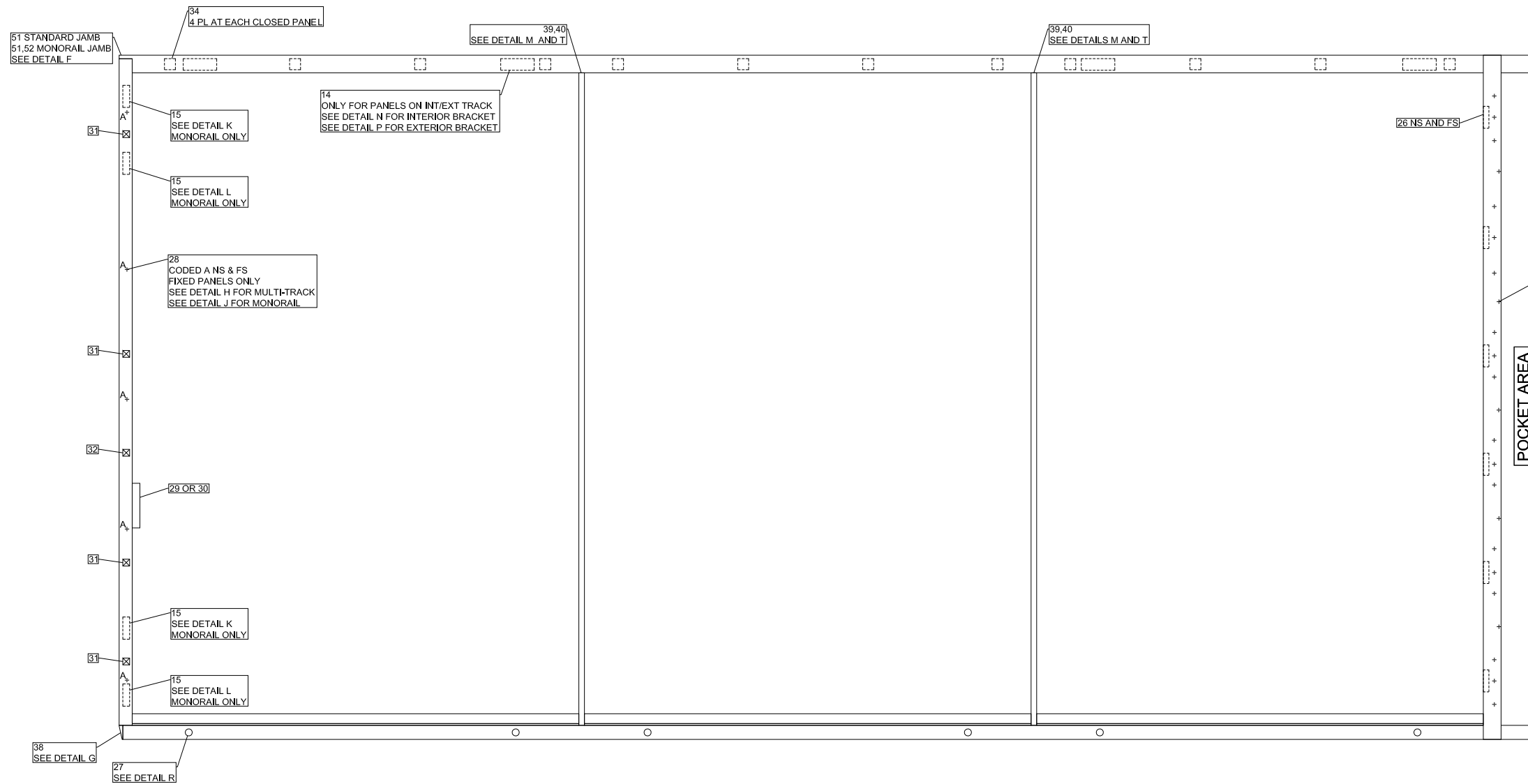
Scale: NOT TO SCALE		Drawing Title: LUXVIEW SLIDE 54i - MINIMAL MULTISLIDE DOOR	
Sheet #: 3 OF 9		Drawing Number: FPA-SLIDE54i	Revision: 00
		Drawn By: CAC	Reviewed By: JAB
		Date: 24JUN2024	



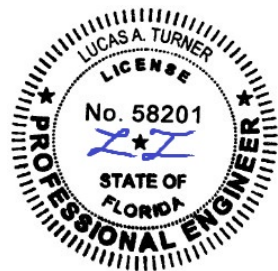
7/3/2024
Lucas A. Turner
FL P.E. #58201
Turner Engineering & Consulting, Inc.
2428 Old Natchez Trc Trl
Camden, TN 38320
941-380-1574

LUXVIEW

LuxView Proprietary
Copyright 2024 LuxView LLC



TYPICAL HARDWARE LOCATIONS

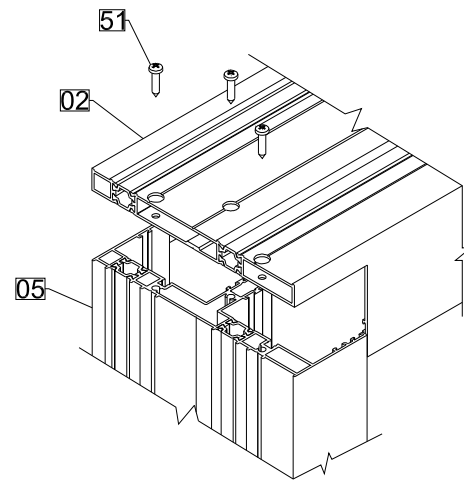


7/3/2024
 Lucas A. Turner
 FL P.E. #58201
 Turner Engineering &
 Consulting, Inc.
 2428 Old Natchez Trc Trl
 Camden, TN 38320
 941-380-1574

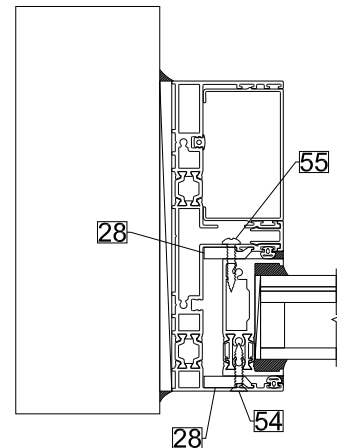
	Drawing Title: LUXVIEW SLIDE 54i - MINIMAL MULTISLIDE DOOR	
Scale: NOT TO SCALE	Drawing Number: FPA-SLIDE54i	Revision: 00
Sheet #: 4 OF 9	Drawn By: CAC	Reviewed By: JAB
		Date: 24JUN2024

LUXVIEW

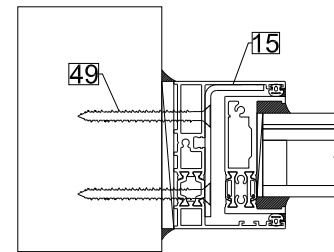
LuxView Proprietary
Copyright 2024 LuxView LLC



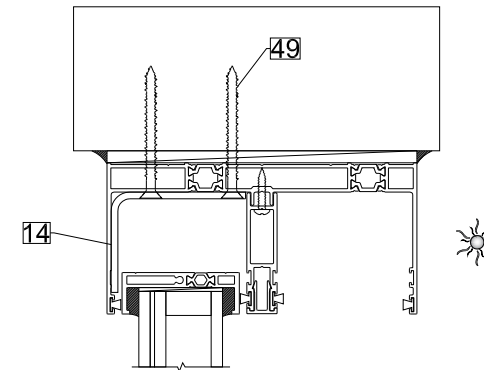
DETAIL F
TYPICAL FRAME JOIN AT HEAD
(2-TRACK SHOWN)



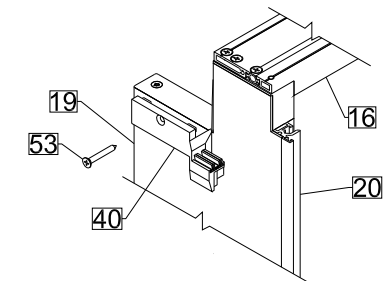
DETAIL H
TYPICAL MULTI-TRACK PANEL FIXING
(2-TRACK SHOWN)



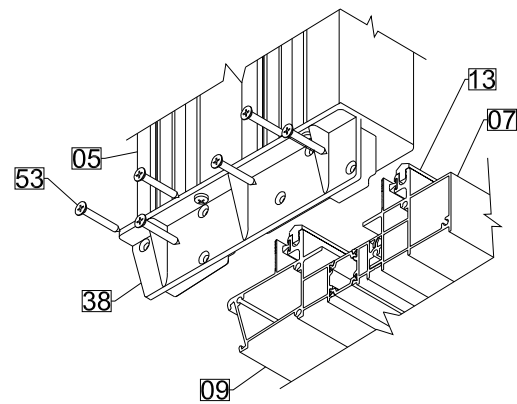
DETAIL K
MONORAIL FRAME REINFORCEMENT
AT INTERIOR FRAME LEG



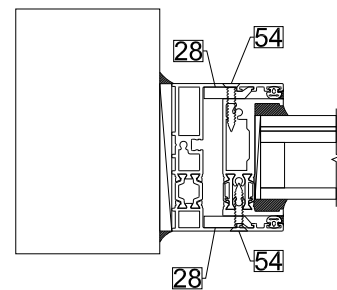
DETAIL N
TYPICAL INTERLOCK REINFORCEMENT
AT INTERIOR FRAME LEG
(2-TRACK SHOWN)



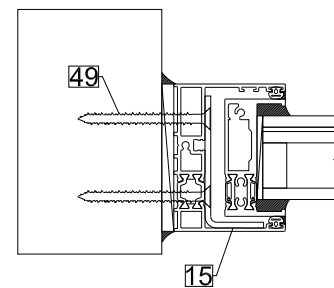
DETAIL M
TYPICAL INTERLOCK AIR SEALING



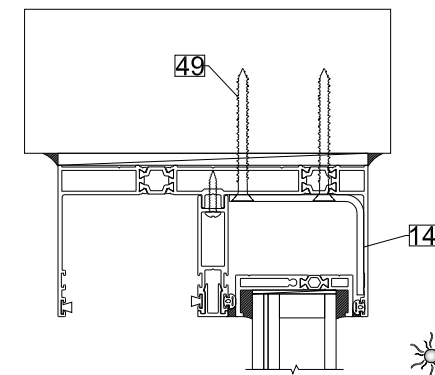
DETAIL G
TYPICAL FRAME JOIN AT SILL
(2-TRACK SHOWN)



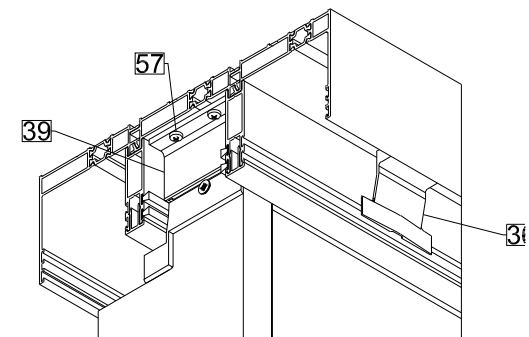
DETAIL J
TYPICAL MONORAIL PANEL FIXING



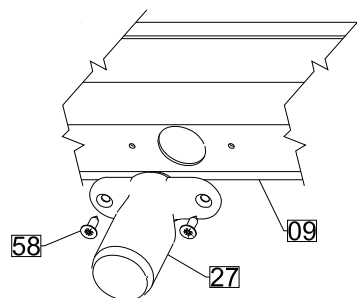
DETAIL L
MONORAIL FRAME REINFORCEMENT
AT EXTERIOR FRAME LEG



DETAIL P
TYPICAL INTERLOCK REINFORCEMENT
AT EXTERIOR FRAME LEG
(2-TRACK SHOWN)

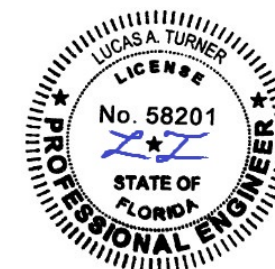


DETAIL T
TYPICAL HEAD TRACK AIR SEALING
(ALL INTERLOCK LOCATIONS)



DETAIL R
DRAINAGE ADAPTER ATTACHMENT

 SYMBOL INDICATES
EXTERIOR

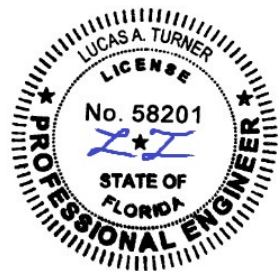
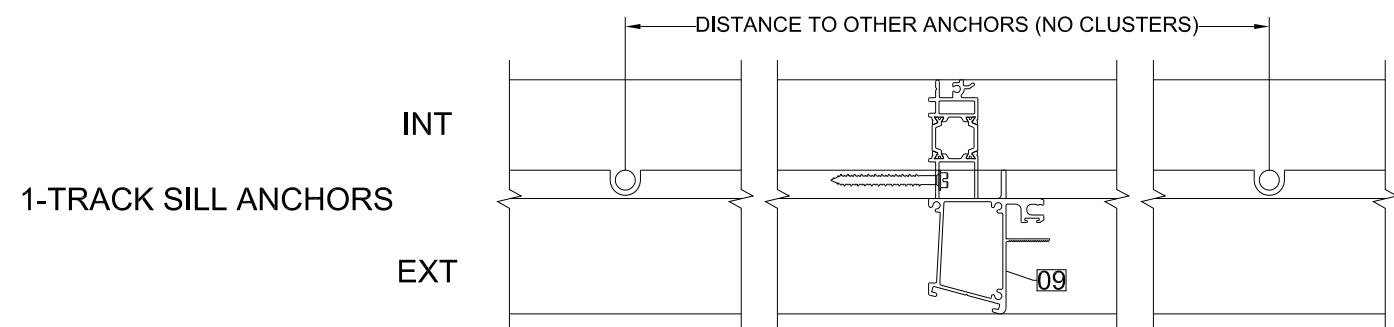
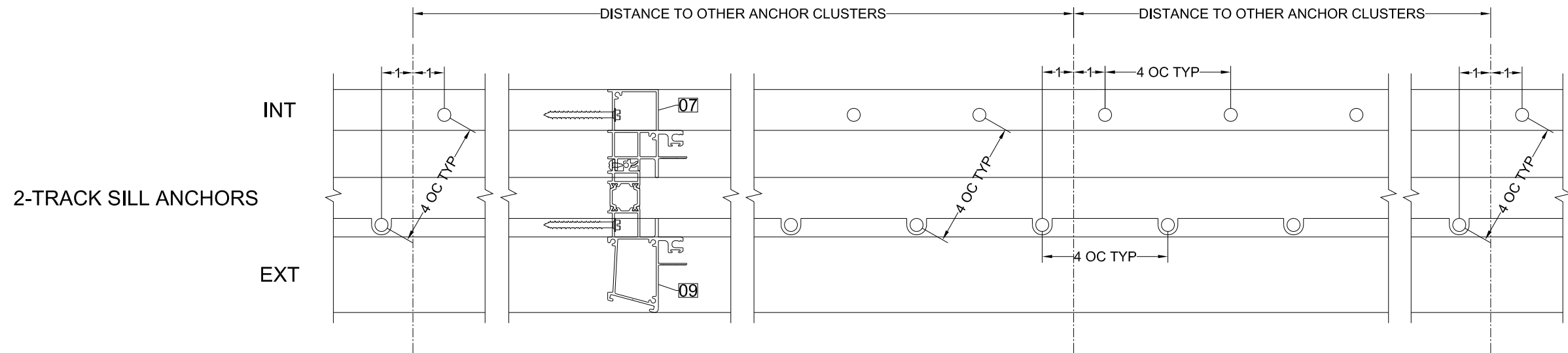
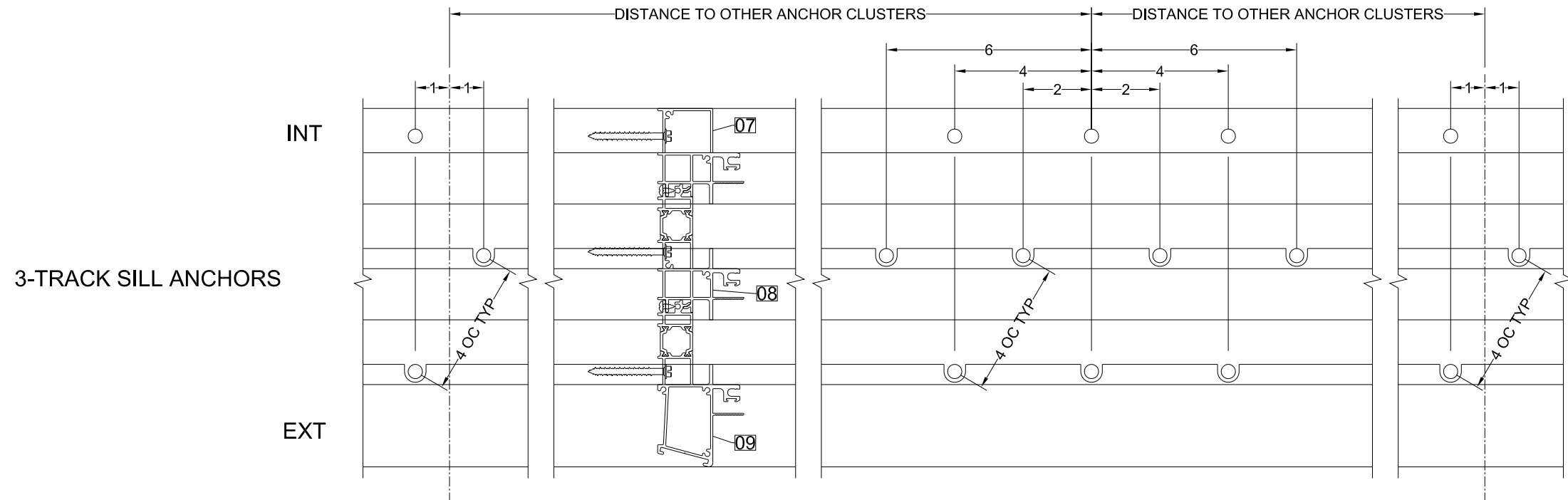


7/3/2024
Lucas A. Turner
FL P.E. #58201
Turner Engineering &
Consulting, Inc.
2428 Old Natchez Trc Trl
Camden, TN 38320
941-380-1574

Drawing Title: LUXVIEW SLIDE 54i - MINIMAL MULTISLIDE DOOR	
Scale: NOT TO SCALE	Drawing Number: FPA-SLIDE54i
Sheet #: 5 OF 9	Revision: 00
Drawn By: CAC	Reviewed By: JAB
	Date: 24JUN2024

LUXVIEW

LuxView Proprietary
Copyright 2024 LuxView LLC

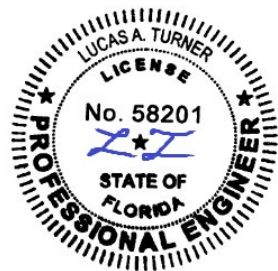
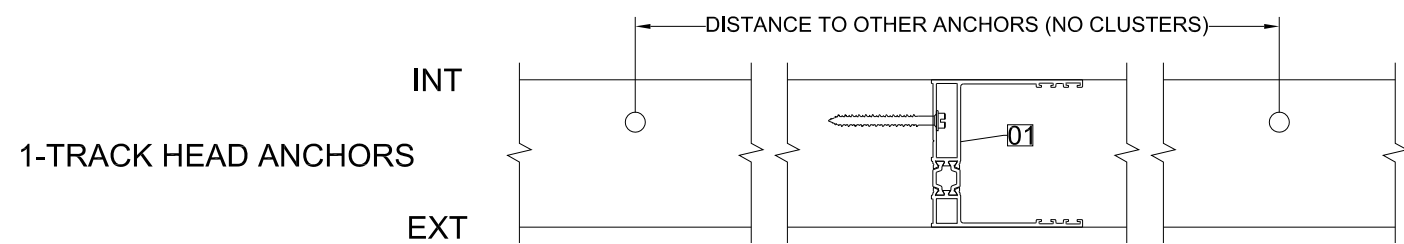
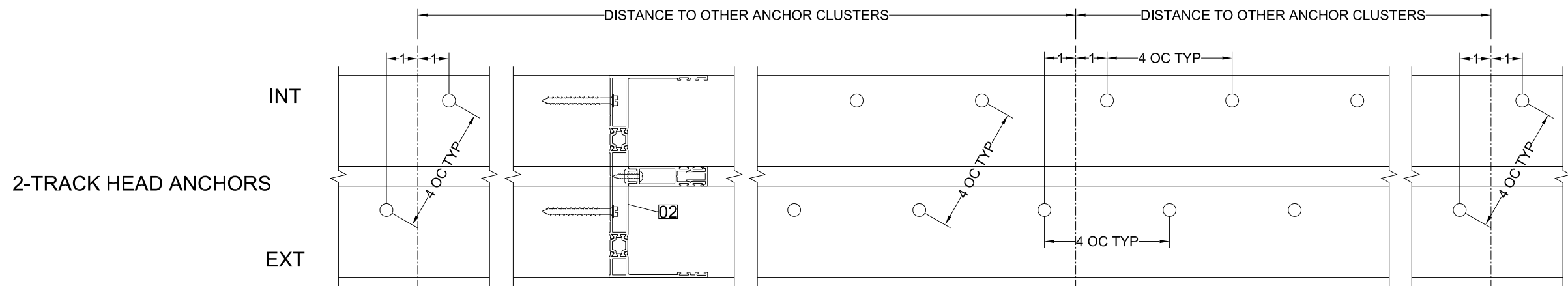
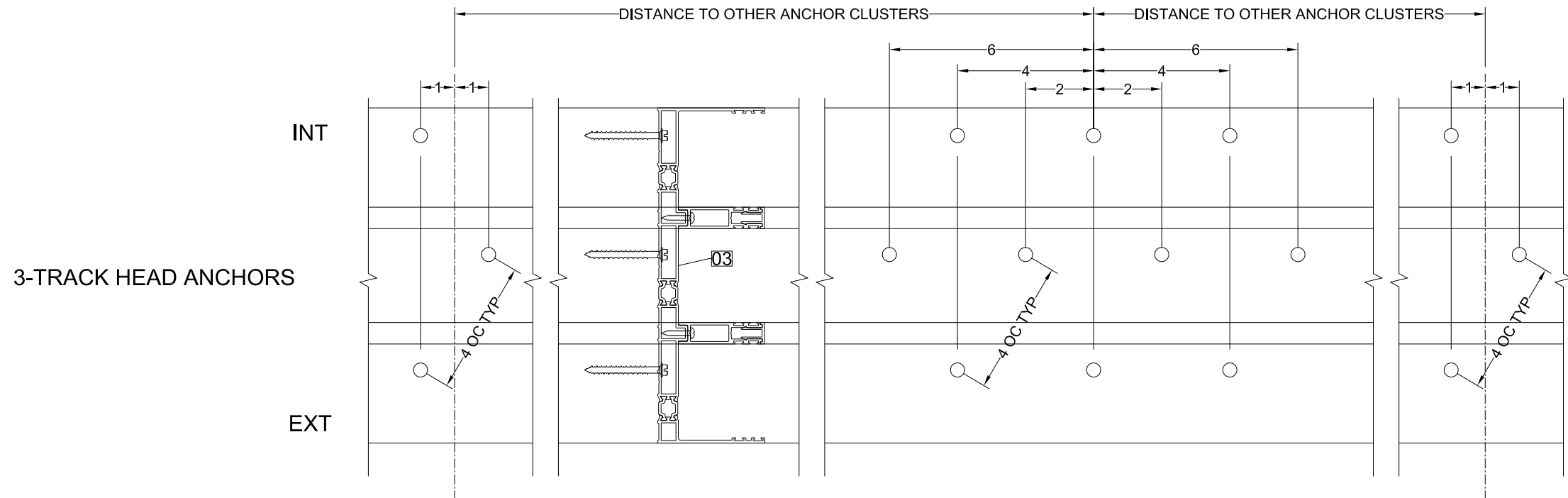


7/3/2024
 Lucas A. Turner
 FL P.E. #58201
 Turner Engineering &
 Consulting, Inc.
 2428 Old Natchez Trc Trl
 Camden, TN 38320
 941-380-1574

Scale: NOT TO SCALE		Drawing Title: LUXVIEW SLIDE 54i - MINIMAL MULTISLIDE DOOR	
Sheet #: 6 OF 9		Drawing Number: FPA-SLIDE54i	Revision: 00
		Drawn By: CAC	Reviewed By: JAB
		Date: 24JUN2024	

LUXVIEW

LuxView Proprietary
 Copyright 2024 LuxView LLC



7/3/2024
Lucas A. Turner
FL P.E. #58201
Turner Engineering &
Consulting, Inc.
2428 Old Natchez Trc Trl
Camden, TN 38320
941-380-1574

	Drawing Title: LUXVIEW SLIDE 54i - MINIMAL MULTISLIDE DOOR	
Scale: NOT TO SCALE	Drawing Number: FPA-SLIDE54i	Revision: 00
Sheet #: 7 OF 9	Drawn By: CAC	Reviewed By: JAB
		Date: 24JUN2024

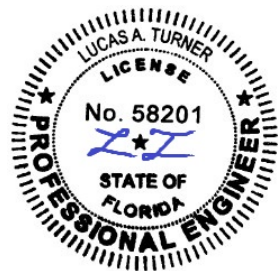
LUXVIEW

LuxView Proprietary
Copyright 2024 LuxView LLC

Bill Of Materials

TAG	Part #	Part Name	Material
1	LUX-S54-0076	1-Track Head Frame	6060-T66 Alum w/ Polyamide Strut
2	LUX-S54-0033	2-Track Head Frame	6060-T66 Alum w/ Polyamide Strut
3	LUX-S54-0006	3-Track Head Frame	6060-T66 Alum w/ Polyamide Strut
4	LUX-S54-0032	Monorail Jamb	6060-T66 Alum w/ Polyamide Strut
5	LUX-S54-0016	2-Track Jamb	6060-T66 Alum w/ Polyamide Strut
6	LUX-S54-0005	3-Track Jamb	6060-T66 Alum w/ Polyamide Strut
7	LUX-S54-0003	Sill Track - Interior	6060-T66 Alum w/ Polyamide Strut
8	LUX-S54-0002	Sill Track - Central	6060-T66 Alum w/ Polyamide Strut
9	LUX-S54-0001	Sill Track - Exterior	6060-T66 Alum w/ Polyamide Strut
10	LUX-S54-0008	Sash Divider	6060-T66 Alum
11	LUX-S54-0007	Cover Clip	6060-T66 Alum
12	LUX-S54-0004	SS Rail - Flat	Stainless Steel
13	LUX-S54-0068	SS Rail - Conical	Stainless Steel
14	LUX-BKT-0019	Head Strengthening Bracket	304 Stainless Steel
15	LUX-BKT-0020	Jamb Strengthening Bracket	304 Stainless Steel
16	LUX-S54-0011	Upper Sash Profile	6060-T66 Alum w/ Polyamide Strut
17	LUX-S54-0009	Lower Sash Profile	6060-T66 Alum w/ Polyamide Strut
18	LUX-S54-0030	Sash Handle Profile	6060-T66 Alum w/ Polyamide Strut
19	LUX-S54-0012	Large Interlock	6060-T66 Alum
20	LUX-S54-0013	PVC For Interlock	Polyamide
21	LUX-S54-0034	Pocket Interlock	6060-T66 Alum w/ Polyamide Strut
22	LUX-S54-0035	Cover Clip	6060-T66 Alum
23	LUX-S54-0036	20 x 40 x 1.4 Tube	6063-T5 Alum
24	LUX-S54-0069	Pocket Closeout Extension	6060-T66 Alum
25	LUX-ADP-0012	Fixed Panel Floor Wedge	Alum
26	LUX-BKT-0021	Pocket Interlock Strengthening Bracket	304 Stainless Steel
27	LUX-S54-0046	Drainage Adaptor	Plastic
28	LUX-S54-0070	Fixed Panel Spacer	Plastic
29	-	Slim Locking Handle Kit	Alum
30	-	Grab Locking Handle Kit	Alum
31	LUX-HDL-0019	Adjustable Locking Point	Cast Alum w/ Stainless Steel Pin
32	LUX-HDL-0020	Front Lock Protection	Plastic
33	DOW 995	Structural Glazing Silicone	Silicone
34	GE SSG-4600	Structural Glazing Silicone	Silicone
35	DOW 795	Weatherproofing Silicone	Silicone
36	LUX-S54-0045	Panel Alignment Spacer	Plastic

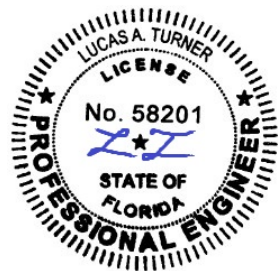
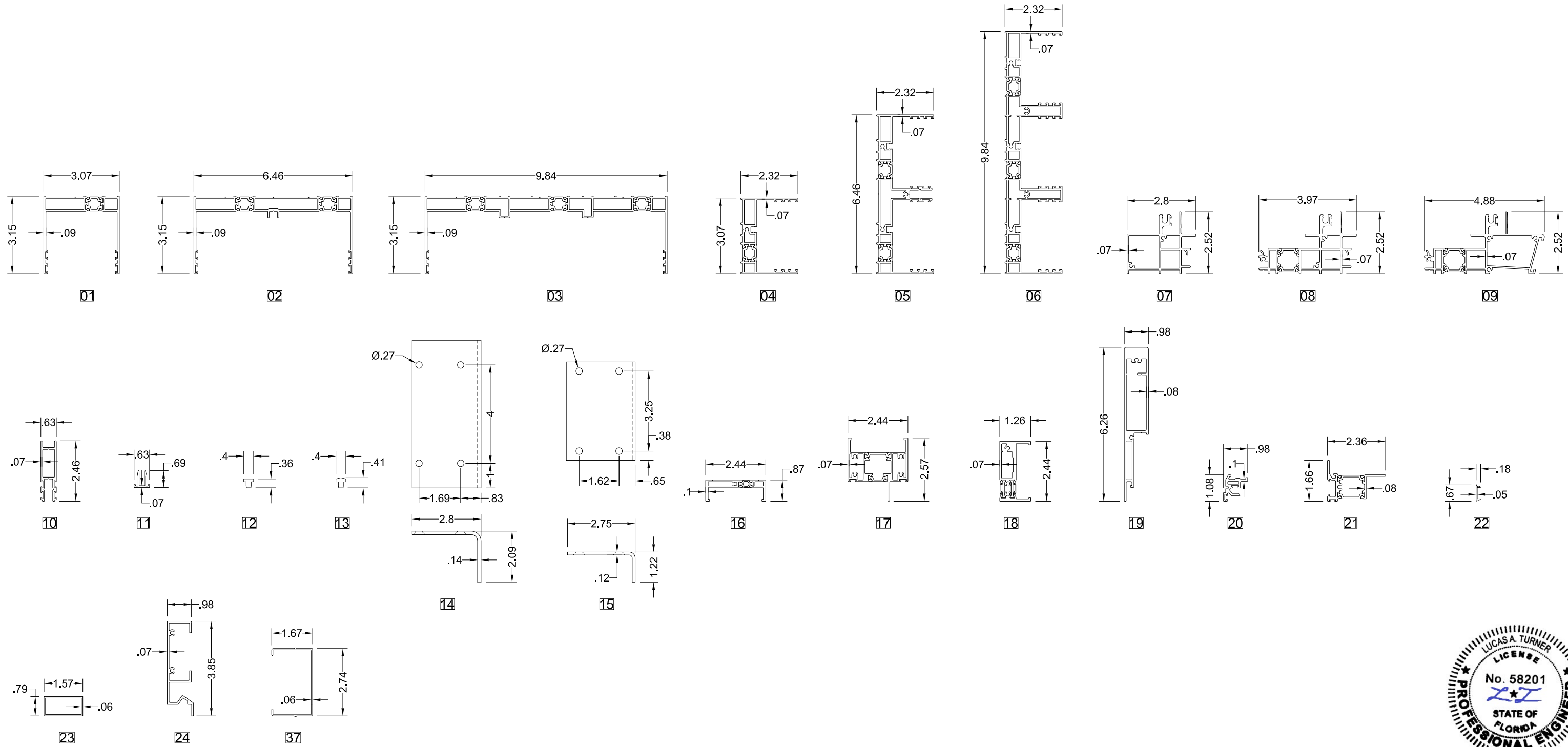
37	LUX-S54-0010	Frame Infill	6060-T66 Alum
38	-	Frame Connector	Nylon
39	LUX-S54-0060	Upper Frame Central Seal	Plastic
40	LUX-S54-0051/61	Interlock End Cap (RH/LH)	Plastic
41	LUX-S54-0040	6mm Trifin	Weatherstrip Brush
42	LUX-S54-0039	6mm Zero Fin	Weatherstrip Brush
43	LUX-GKT-0001	Sealing Gasket	EPDM
44	LUX-S54-0041	12mm Monofin	Weatherstrip Brush
45	LUX-S54-0053	12mm Zero Fin	Weatherstrip Brush
46	LUX-S54-0042	Fixed Panel Floor Gasket	EPDM
47	LUX-S54-0043	Interlock Bubble Gasket	EPDM
48	See Table 1	Installation Anchor	See Table 1, Sheet 2
49	-	1/4" x 2-3/4" Dewalt Ultracon Trimfit Flat Head	Coated Steel
50	-	#8 x 7/8" Phil Pan Screw	18-8 Stainless Steel
51	-	#8 x 1-1/2" Phil Pan Screw	18-8 Stainless Steel
52	-	M4-.7x15 Pan Hex Screw	18-8 Stainless Steel
53	-	#8 x 1-1/4" Phil Flat Screw	18-8 Stainless Steel
54	-	#10 x 1" Phil Flat Screw	18-8 Stainless Steel
55	-	#10 x 1" Phil Pan Screw	18-8 Stainless Steel
56	-	#10 x 2" Phil Pan Screw	18-8 Stainless Steel
57	-	#8 x 1" Phil Pan Screw	18-8 Stainless Steel
58	-	#8 x 1/2" Phil Flat Screw	18-8 Stainless Steel



7/3/2024
 Lucas A. Turner
 FL P.E. #58201
 Turner Engineering &
 Consulting, Inc.
 2428 Old Natchez Trc Trl
 Camden, TN 38320
 941-380-1574

	Drawing Title: LUXVIEW SLIDE 54i - MINIMAL MULTISLIDE DOOR	
Scale: NOT TO SCALE	Drawing Number: FPA-SLIDE54i	Revision: 00
Sheet #: 8 OF 9	Drawn By: CAC	Reviewed By: JAB Date: 24JUN2024

LUXVIEW



7/3/2024
 Lucas A. Turner
 FL P.E. #58201
 Turner Engineering &
 Consulting, Inc.
 2428 Old Natchez Trc Trl
 Camden, TN 38320
 941-380-1574

	Drawing Title: LUXVIEW SLIDE 54i - MINIMAL MULTISLIDE DOOR	
Scale: NOT TO SCALE	Drawing Number: FPA-SLIDE54i	Revision: 00
Sheet #: 9 OF 9	Drawn By: CAC	Reviewed By: JAB Date: 24JUN2024

LUXVIEW

LuxView Proprietary
 Copyright 2024 LuxView LLC