


JELD-WEN

PREMIUM ATLANTIC VINYL AWNING WINDOW (8800) - LMI

INSTALLATION ANCHORAGE DETAILS

GENERAL NOTES:

- THIS PRODUCT IS DESIGNED TO COMPLY WITH THE HIGH VELOCITY HURRICANE ZONE (HVHZ) REQUIREMENTS OF THE CURRENT EDITION OF THE FLORIDA BUILDING CODE (FBC) AT THE DESIGN PRESSURE STATED HEREIN. THE PRODUCT DETAILS CONTAINED HEREIN ARE BASED UPON SIGNED AND SEALED TEST REPORT NCTL-210-3267-2 DATED 05/25/06 AND NCTL-210-3373-1A DATED 02/05/07 AND ASSOCIATED LABORATORY STAMPED DRAWINGS AND WERE TESTED IN ACCORDANCE WITH CURRENT HVHZ PROTOCOLS.
- ADEQUACY OF THE EXISTING STRUCTURAL CONCRETE MASONRY AND 2X FRAMING AS A MAIN WIND FORCE RESISTING SYSTEM CAPABLE OF WITHSTANDING AND TRANSFERRING APPLIED PRODUCT LOADS TO THE STRUCTURE IS THE RESPONSIBILITY OF THE ENGINEER OR ARCHITECT OF RECORD.
- 1X BUCKS AND 2X WOOD FRAMING (WHEN USED) SHALL BE DESIGNED AND ANCHORED TO PROPERLY TRANSFER ALL LOADS TO THE STRUCTURE. BUCK DESIGN AND INSTALLATION IS THE RESPONSIBILITY OF THE ENGINEER OR ARCHITECT OF RECORD.
- IN AREAS WHERE WIND-BORNE DEBRIS PROTECTION REQUIREMENTS EXIST, USE OF AN APPROVED HVHZ IMPACT PROTECTIVE SYSTEM IS NOT REQUIRED.

- MATERIALS:
 - WINDOW FRAME AND SASH MATERIAL:
 EXTRUDED PVC 0.075" THICK PER NOA NO. 12-1017.02 AND 13-0425.15.
 - LAMINATE: DUPONT SENTRYGLAS INTERLAYER PER NOA NO. 11-0624.02.
 - SASH REINFORCEMENT MATERIAL: ROLL FORMED GALVANIZED STEEL 0.057" THICK.
- GLASS MEETS THE REQUIREMENTS OF ASTM E1300-04e(01).
- DESIGNATION "X" AND "O" STAND FOR THE FOLLOWING:
 - X: OPERABLE PANEL
 - O: FIXED PANEL
- A 1/3 INCREASE IN ALLOWABLE STRESS FOR WIND LOADS WAS NOT USED IN THE DESIGN OF THE PRODUCT(S) SHOWN HEREIN. WIND LOAD DURATION FACTOR Cd = 1.0 WAS USED.
- IN ACCORDANCE WITH APPLICABLE SECTIONS OF THE FLORIDA BUILDING CODE, WOOD BUCKING SHALL HAVE BEEN PRESERVATIVE TREATED OR SHALL BE OF A DURABLE SPECIES

INSTALLATION NOTES:

- ONE (1) INSTALLATION ANCHOR ARE REQUIRED AT EACH ANCHOR LOCATION.
- THE NUMBER OF INSTALLATION ANCHORS DEPICTED IS THE MINIMUM NUMBER OF ANCHORS TO BE USED FOR PRODUCT INSTALLATION.
- SHIM AS REQUIRED AT EACH INSTALLATION ANCHOR WITH LOAD BEARING SHIM(S). MAXIMUM ALLOWABLE SHIM SIZE IS 1/4 INCH. SHIM WHERE SPACE OF 1/16 INCH OR GREATER OCCURS. SHIM(S) SHALL BE CONSTRUCTED OF HIGH DENSITY PLASTIC OR BETTER.
- ANCHORS FOR INSTALLATION INTO WOOD FRAMING OR THROUGH 1X BUCK TO CONCRETE / MASONRY, OR DIRECTLY INTO CONCRETE / MASONRY SHALL BE AS SHOWN IN "ANCHOR SCHEDULE" SHEET 1.
- MINIMUM EMBEDMENT AND EDGE DISTANCE EXCLUDE WALL FINISHES, INCLUDING BUT NOT LIMITED TO STUCCO, FOAM, BRICK VENEER AND SIDING.
- FOR CONCRETE BLOCK APPLICATIONS DO NOT INSTALL INSTALLATION ANCHORS INTO MORTAR JOINTS.
- INSTALLATION ANCHORS SHALL BE INSTALLED IN ACCORDANCE WITH ANCHOR MANUFACTURER'S INSTALLATION INSTRUCTIONS AND ANCHORS SHALL NOT BE USED IN SUBSTRATES WITH STRENGTHS LESS THAN THE MINIMUM STRENGTH SPECIFIED IN THE "ANCHOR SCHEDULE", SHEET 1.
- ANCHORS SHALL BE MADE OF CORROSION RESISTANT STEEL OR TREATED WITH CORROSION RESISTANT COATING.

INSTALLATION ANCHOR SCHEDULE								
INSTALLATION	SUBSTRATE	HEAD TYPE	SIZE	MANUFACTURER AND/OR SPECIFICATION	MIN. EMBEDMENT (IN)	MIN. EDGE DISTANCE (IN)	MIN. SPACING (IN)	CAPACITIES BASED ON
THROUGH-FRAME ANCHORS	CONCRETE	PAN HEAD	3/16"	ITW TAPCON (3)	1 1/2	1 1/8	2 1/2	MIN. 2000 PSI CONCRETE BUT NOT LESS THAN THAT REQUIRED BY BUILDING CODE
				Elco Ultracon	1	1	3 3/8	MIN. 2500 PSI CONCRETE BUT NOT LESS THAN THAT REQUIRED BY BUILDING CODE
	MASONRY (BLOCK/CMU)	PAN HEAD	3/16"	ITW TAPCON (3)	1	2	2 1/2	STRENGTH CONFORMANCE TO ASTM C-90, MEDIUM WEIGHT DENSITY > 117 PCF
				Elco Ultracon	1 1/4	1	3 3/8	STRENGTH CONFORMANCE TO ASTM C-90, MEDIUM WEIGHT
	WOOD (1)	PAN HEAD	NO. 10	ANSI B18.6.1 (WOOD SCREW) ASME B18.6.4 (TAPPING SCREW)	1 3/8	3/4	3/4	WOOD WITH A MINIMUM SPECIFIC GRAVITY OF 0.55
FIN-FRAME ANCHORS	WOOD (2)	PAN HEAD W/WASHER OR ROUND WASHER HEAD (4)	NO. 10	ANSI B18.6.1 (WOOD SCREW) ASME B18.6.4 (TAPPING SCREW)	1 1/2	5/16	13/16	WOOD WITH A MINIMUM SPECIFIC GRAVITY OF 0.55

- NOTES:**
- FOR WOOD AND TAPPING SCREWS IF SPLITTING IS A CONCERN, DRILL 7/64" PILOT HOLE FOR WOOD FRAME INSTALLATION.
 - FOR WOOD AND TAPPING SCREWS IF SPLITTING IS A CONCERN, DRILL 3/32" PILOT HOLE FOR WOOD FRAME INSTALLATION.
 - WHEN ITW TAPCONS ARE USED FOR CONCRETE/MASONRY INSTALLATION, THEY SHALL BE THE ADVANCED THREADFORM TECHNOLOGY TYPE.
 - NO. 10 WASHER (USED WITH NO. 10 SCREW) OR NO. 10 ROUND WASHER HEAD WOOD SCREW SHALL HAVE NOMINAL HEAD DIAMETER 7/16" OR LARGER.

DESIGN PRESSURE RATING (PSF)	IMPACT RATING
+50.0/-50.0	LARGE MISSILE

TABLE OF CONTENT	
SHEET	DESCRIPTION
1	GENERAL AND INSTALLATION NOTES
2	ELEVATIONS AND ANCHORING LAYOUTS
3	HORIZONTAL CROSS SECTIONS
4	VERTICAL CROSS SECTIONS
5	VERTICAL AND HORIZONTAL CROSS SECTIONS
6	COMPONENTS, BILL OF MATERIALS AND DETAILS
7	FRAME AND VENT ASSEMBLY DETAILS

PROJECT NUMBER: 413-1207

REV: A

DATE: 12/23/13

BY: RJA

JELD - WEN
 3737 LAKEPORT BOULEVARD
 KLAMATH FALLS, OR 97601

PERMIUM ATLANTIC VINYL AWNING (8800)
 LARGE MISSILE IMPACT
 GENERAL AND INSTALLATION NOTES

DATE: 06/19/12
 DRAWING NO: JELDO101
 SHEET: 1 OF 7

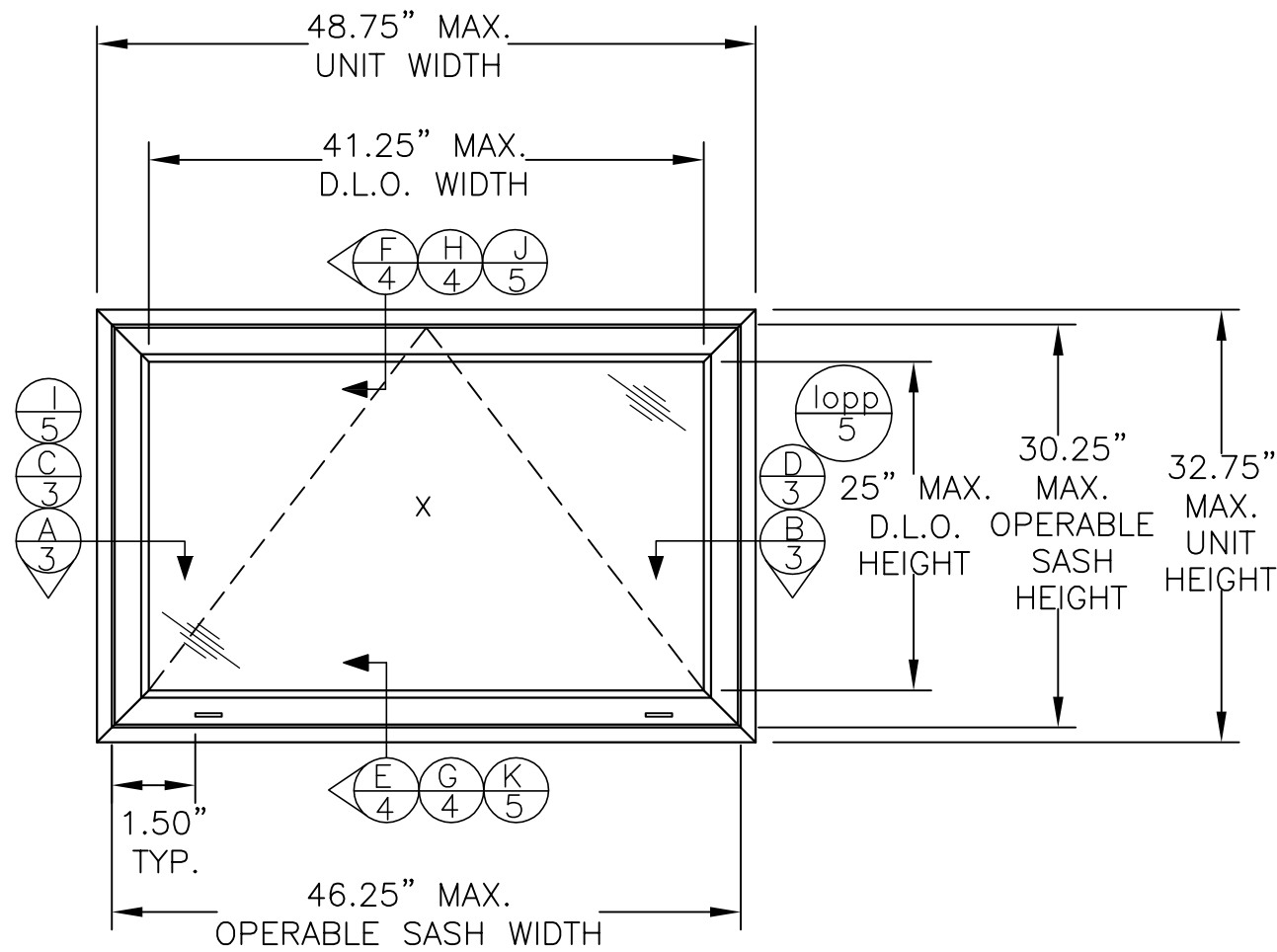
DRAWN BY: TJH
 SCALE: N.T.S.
 REV: A

DESCRIPTION: REVISE SHEETS 1, 3, 4, 5 AND 6.

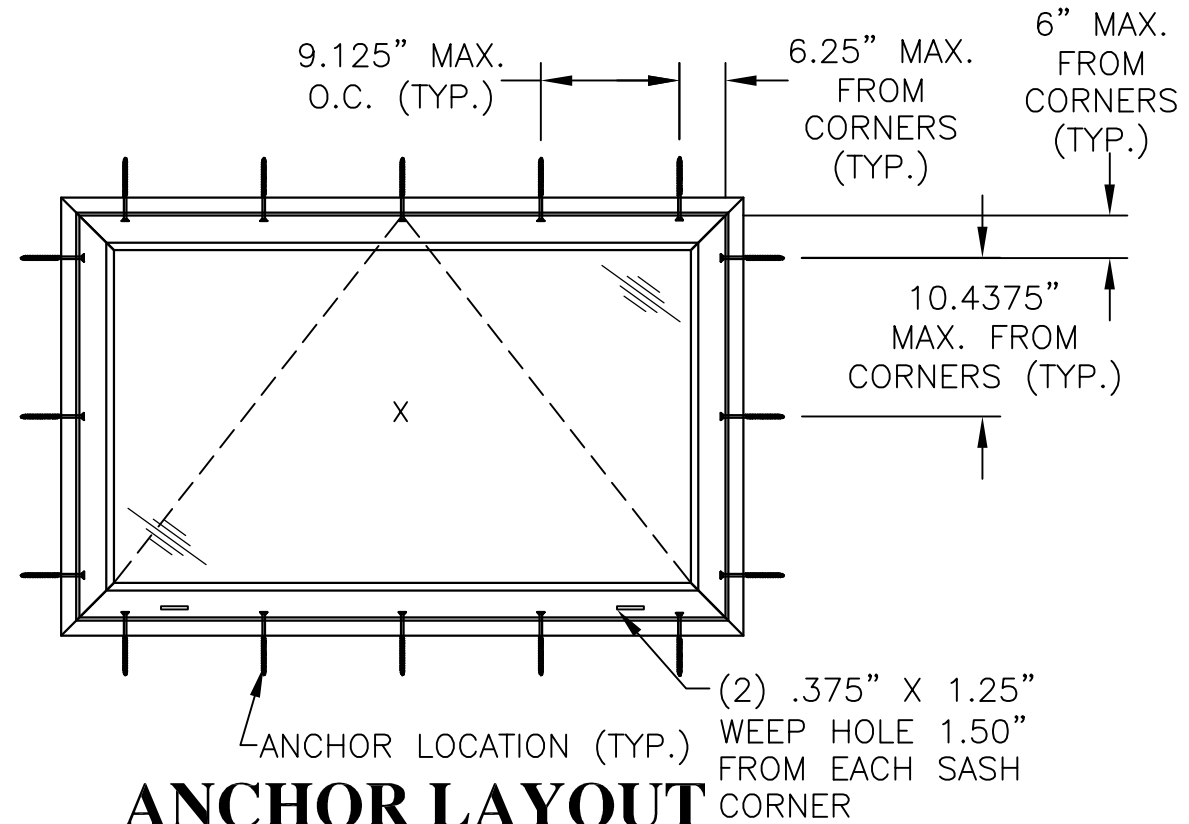
PREPARED BY:

PTC PRODUCT DESIGN GROUP, LLC
 PO BOX 520775
 LONGWOOD, FLORIDA 32752
 FBPE C.A. NO. 25935

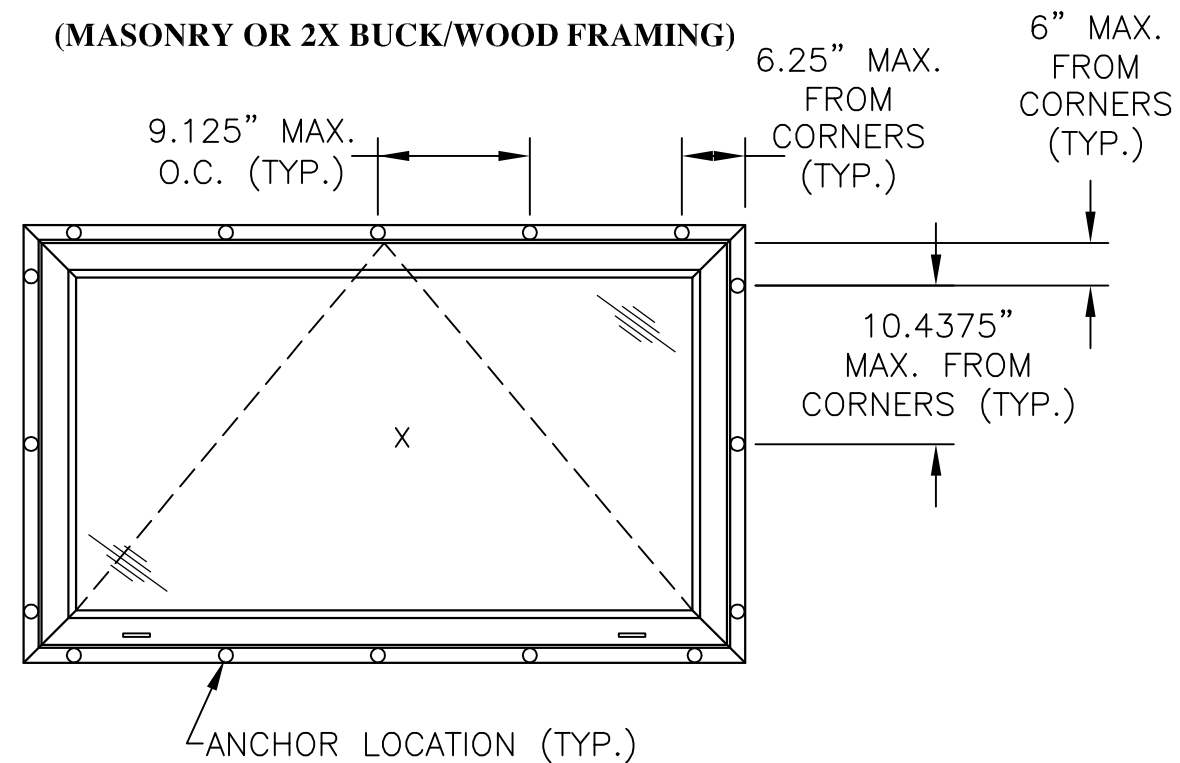
Robert J. Amoruso, P.E.
FL P.E. No. 49752



**ONE LITE VINYL AWNING
PRIME WINDOW**
ELEVATION



ANCHOR LAYOUT
FRAME ANCHORING
(MASONRY OR 2X BUCK/WOOD FRAMING)



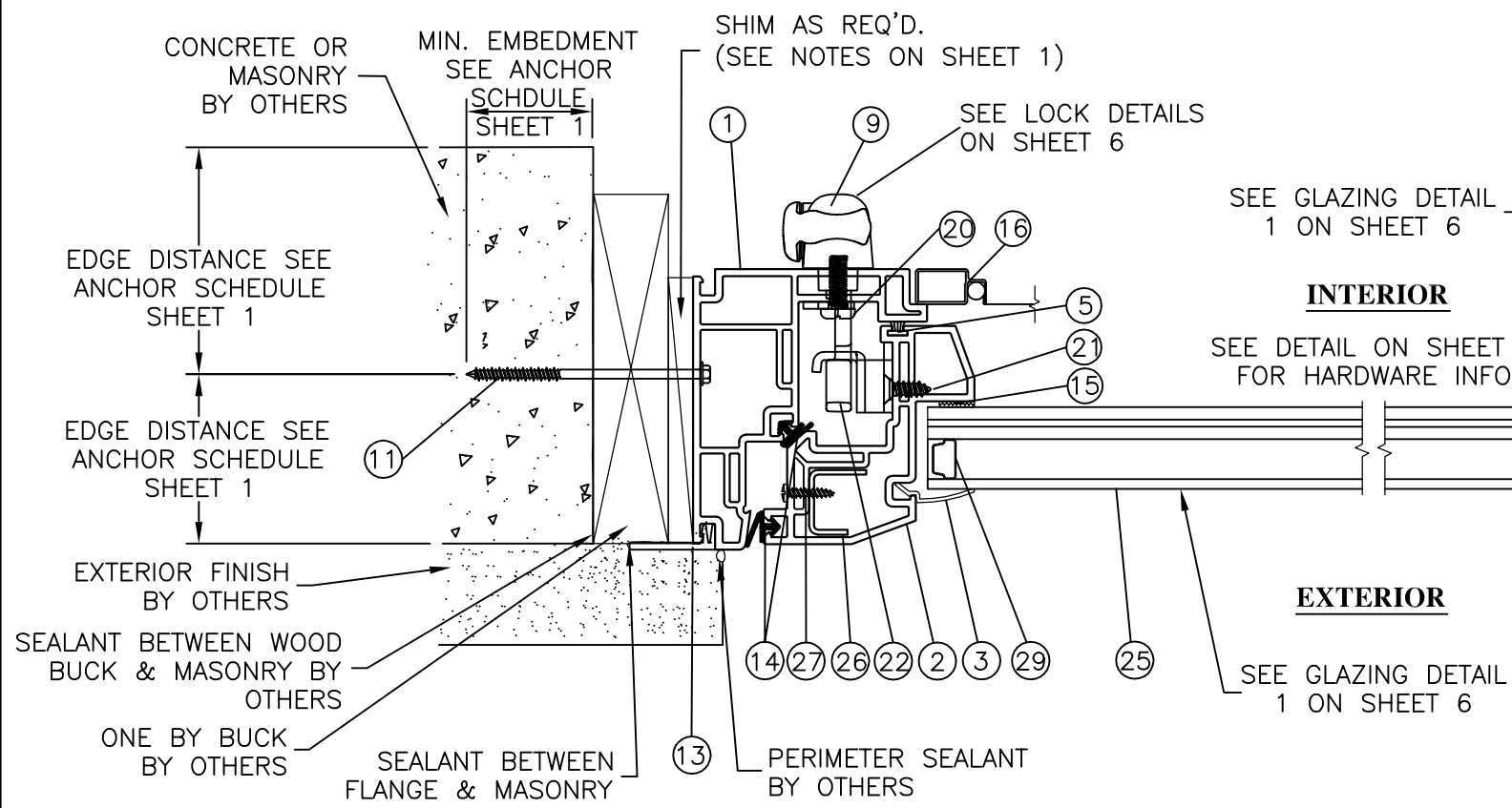
ANCHOR LAYOUT
FIN ANCHORING
(WOOD)

PROJECT NUMBER: 413-1207

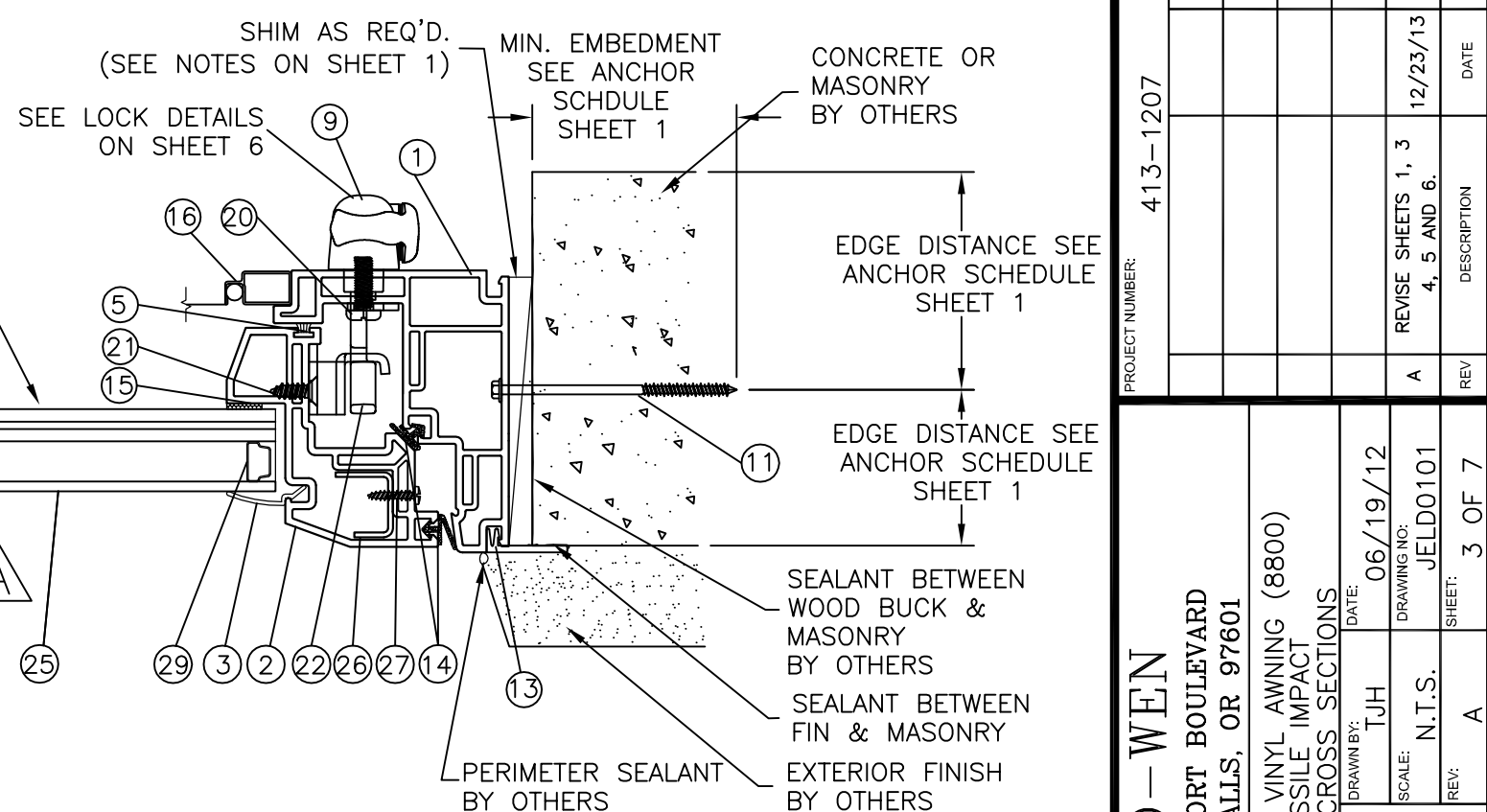
DATE	12/23/13	BY	RJA
DESCRIPTION	REVISE SHEETS 1, 3, 4, 5 AND 6.	REV	A
SHEET	JELD0101	REV	A
SCALE	N.T.S.	DATE	06/19/12
DRAWING NO.	JELD0101	DRAWN BY	TJH
GENERAL AND INSTALLATION NOTES	PERMIUM ATLANTIC VINYL AWNING (8800) LARGE MISSILE IMPACT		
TITLE	JELD - WEN 3737 LAKEPORT BOULEVARD KLAMATH FALLS, OR 97601		

PREPARED BY: PTC PRODUCT DESIGN GROUP, LLC
 PO BOX 520775
 LONGWOOD, FLORIDA 32752
 FBPE C.A. NO. 25935
 Phone: 321.690.1788
 Fax: 321.690.1789
 Email: info@ptc-corp.com

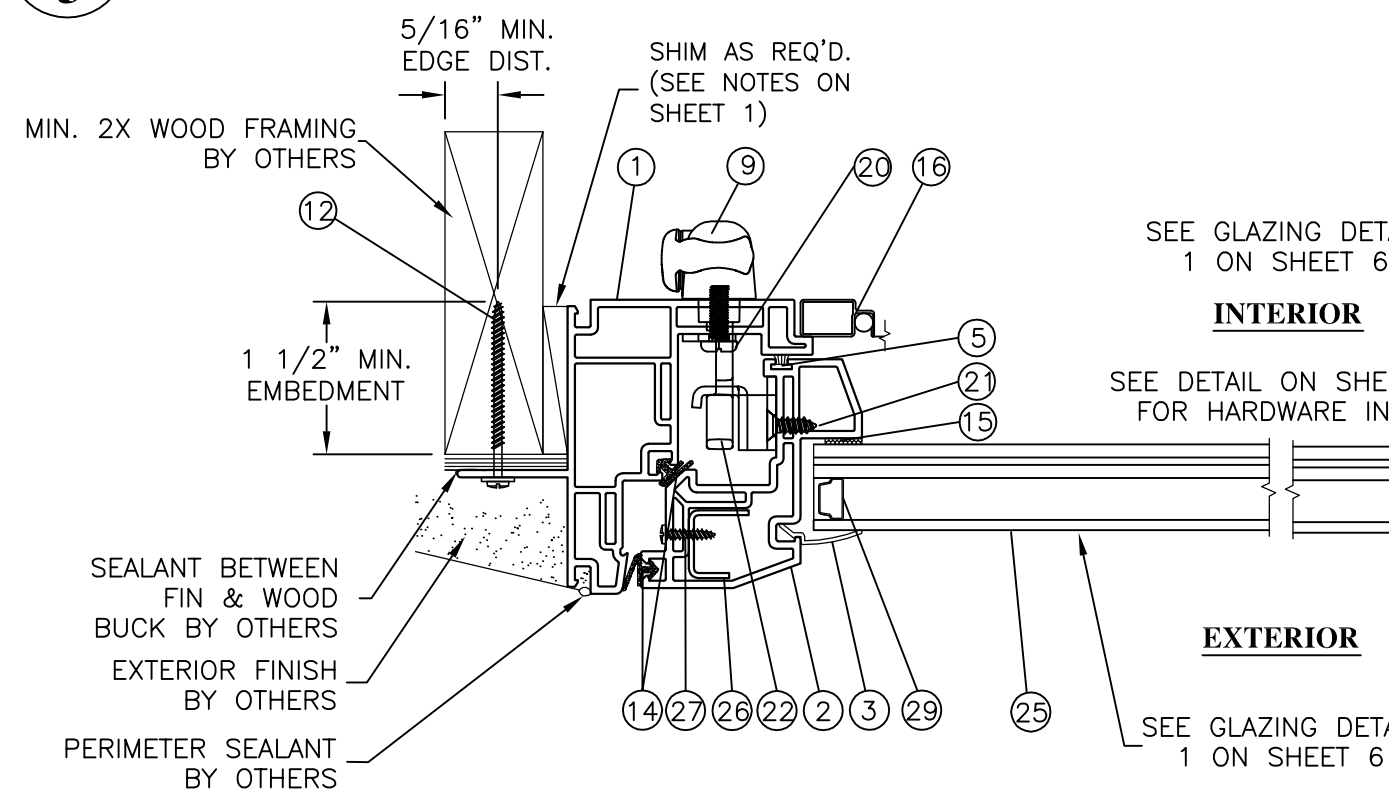
Robert J. Amoruso, P.E.
 FL P.E. No. 49752



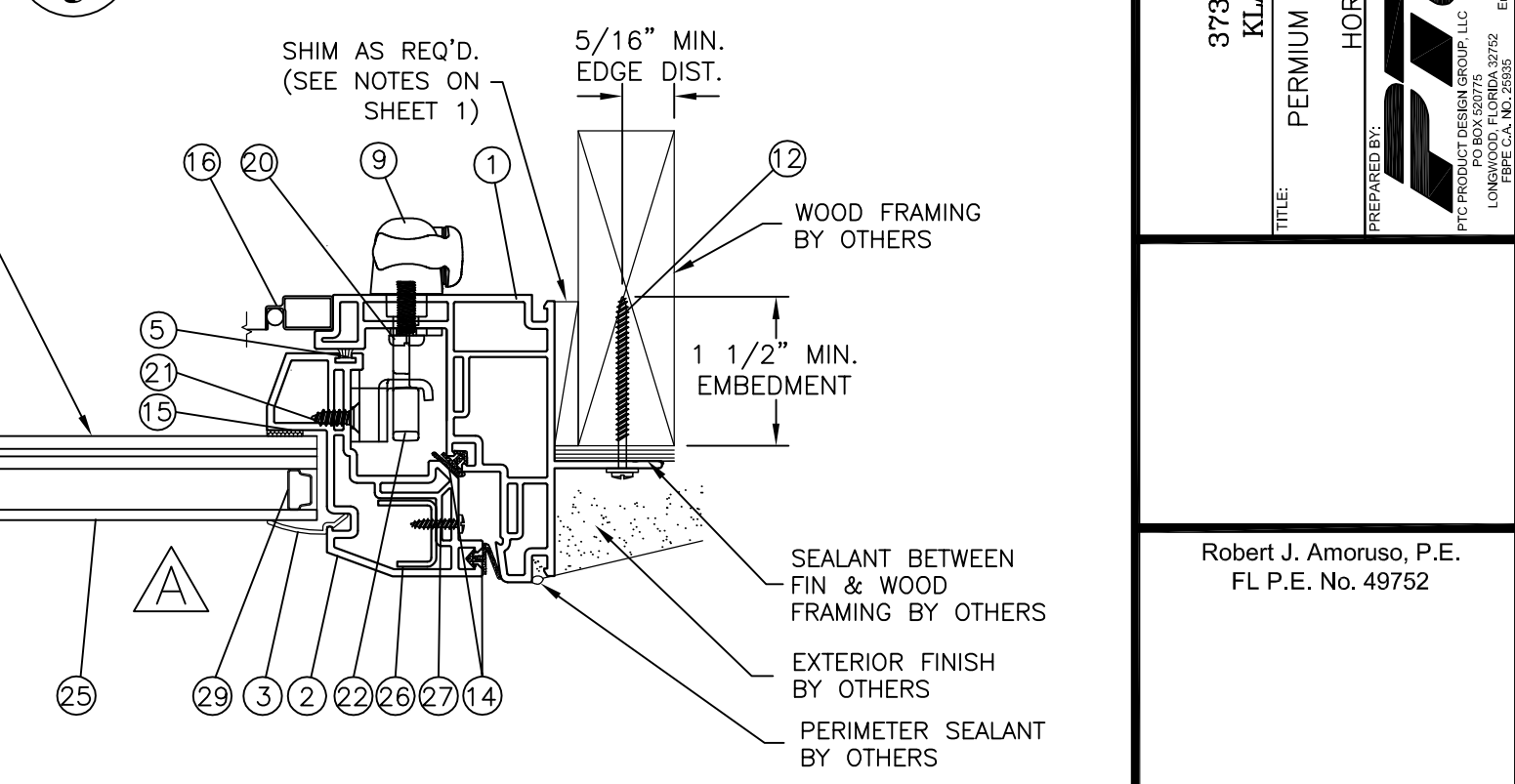
A HORIZONTAL CROSS SECTION
3 MASONRY



B HORIZONTAL CROSS SECTION
3 MASONRY



C HORIZONTAL CROSS SECTION
3 INTREGAL FIN (WOOD)



D HORIZONTAL CROSS SECTION
3 INTREGAL FIN (WOOD)

PROJECT NUMBER: 413-1207

REV	DESCRIPTION	DATE	BY
A	REVISE SHEETS 1, 3, 4, 5 AND 6.	12/23/13	RJA

JELD - WEN
 3737 LAKEPORT BOULEVARD
 KLAMATH FALLS, OR 97601

TITLE: PERMIUM ATLANTIC VINYL AWNING (8800)
 LARGE MISSILE IMPACT
 HORIZONTAL CROSS SECTIONS

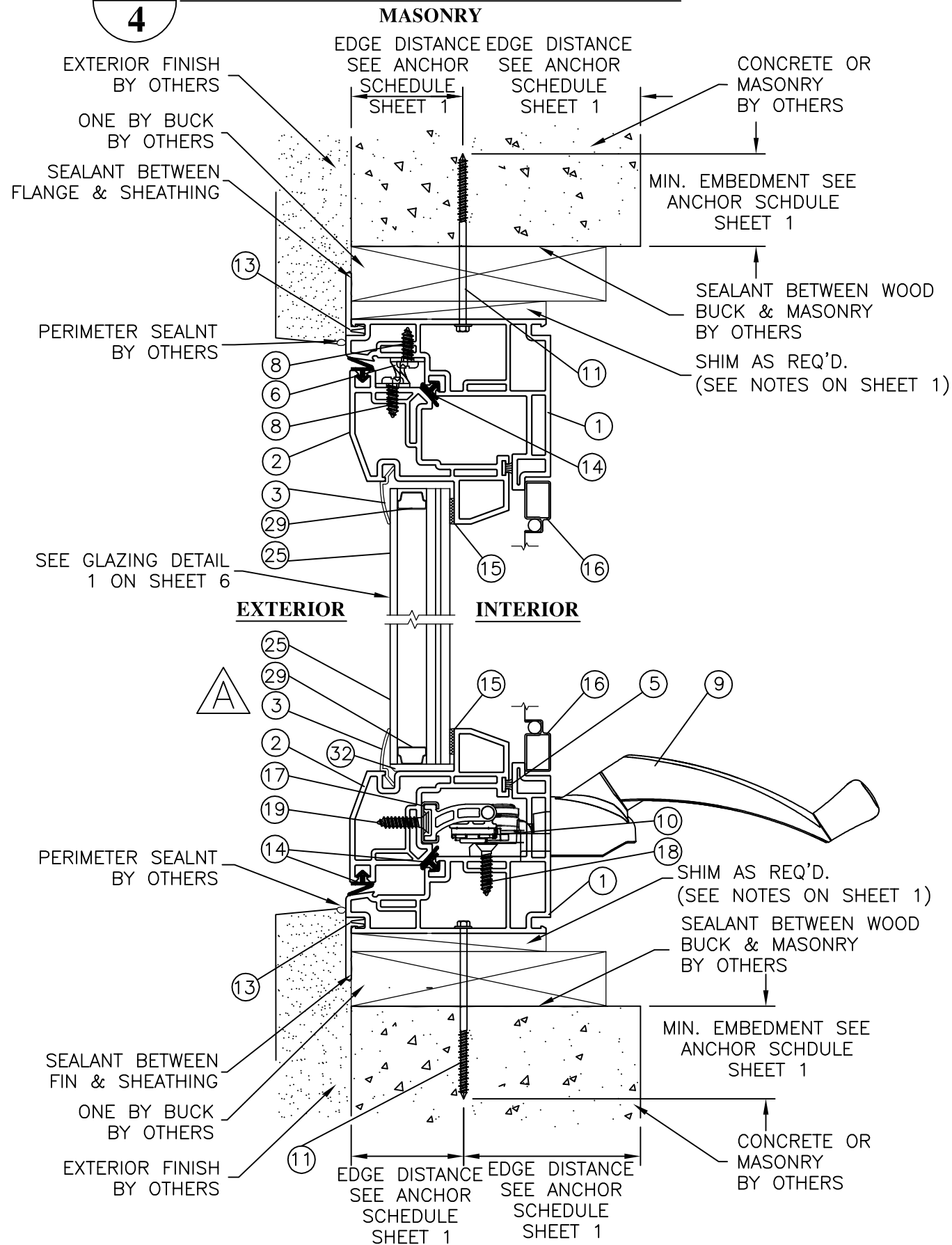
DATE: 06/19/12
 DRAWING NO: JELD0101
 SHEET: 3 OF 7

DRAWN BY: TJH
 SCALE: N.T.S.
 REV: A

PREPARED BY: **PTC**
 PTC PRODUCT DESIGN GROUP, LLC
 PO BOX 520775
 LONGWOOD, FLORIDA 32752
 FBPE C.A. NO. 25935
 Phone: 321.690.1788
 Fax: 321.690.1789
 Email: info@ptc-corp.com

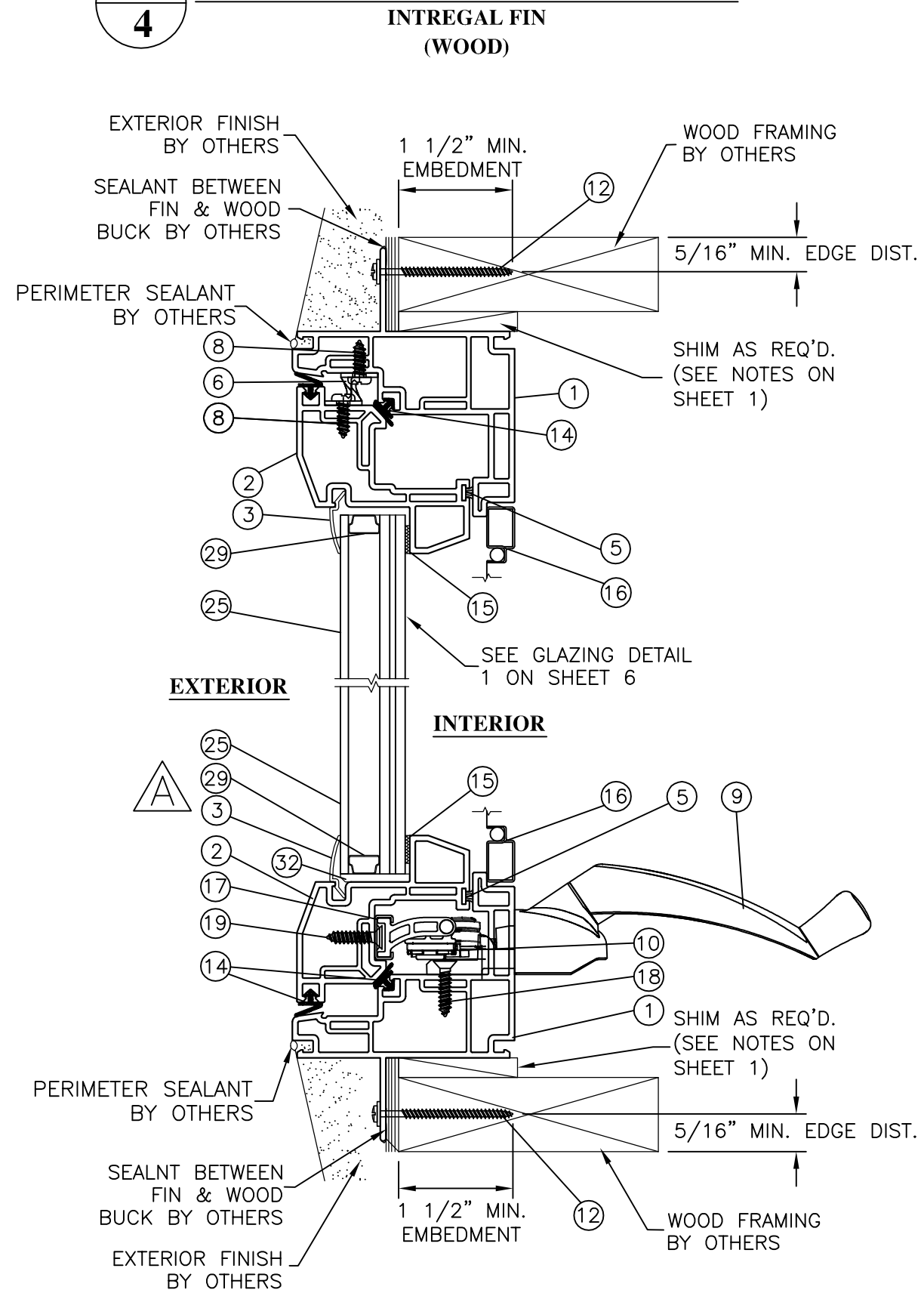
Robert J. Amoruso, P.E.
 FL P.E. No. 49752

F
4 **VERTICAL CROSS SECTION**
MASONRY



E
4 **VERTICAL CROSS SECTION**
MASONRY

H
4 **VERTICAL CROSS SECTION**
INTREGAL FIN (WOOD)



G
4 **VERTICAL CROSS SECTION**
INTREGAL FIN (WOOD)

PROJECT NUMBER: 413-1207

JELD - WEN
3737 LAKEPORT BOULEVARD
KLAMATH FALLS, OR 97601

TITLE: PERMIUM ATLANTIC VINYL AWNING (8800)
LARGE MISSILE IMPACT
VERTICAL CROSS SECTIONS

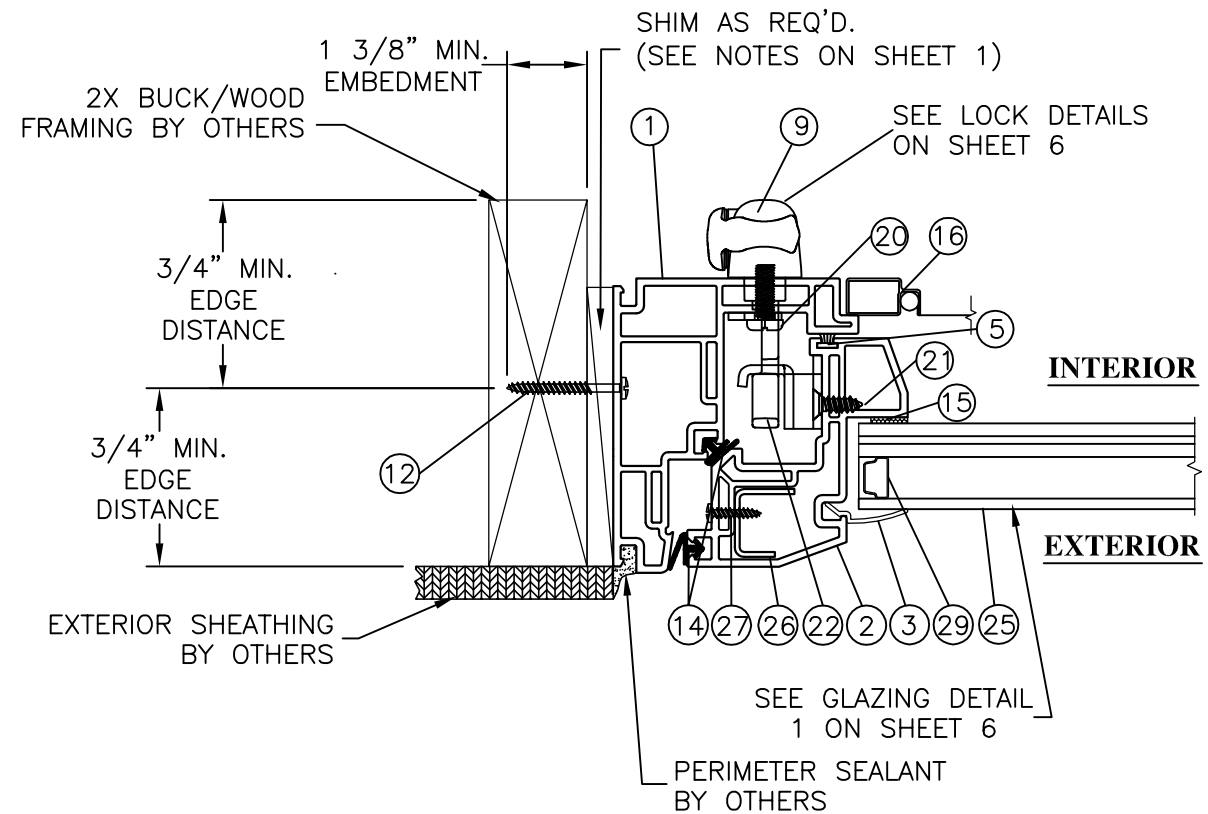
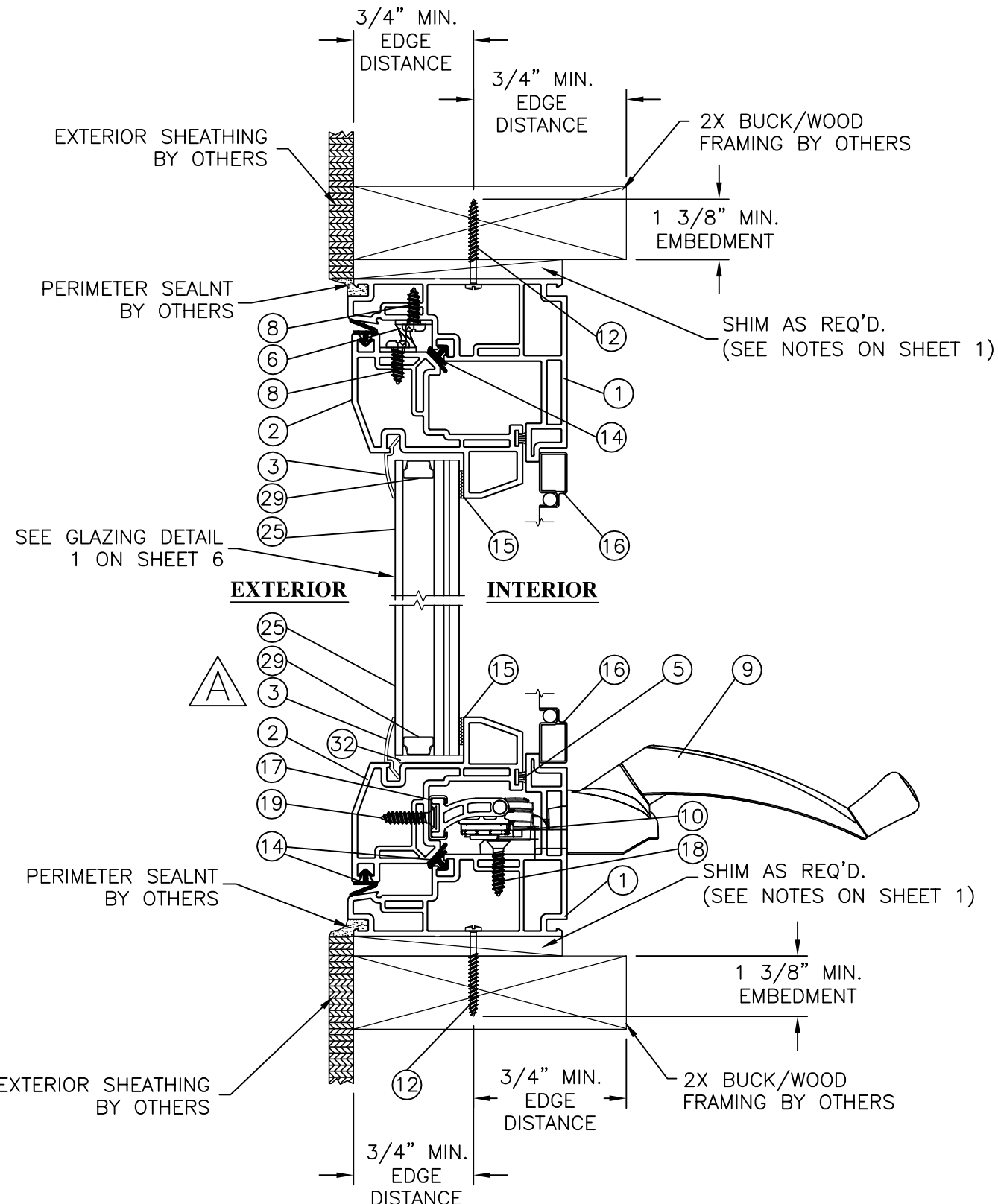
PREPARED BY: TJH
SCALE: N.T.S.
DATE: 06/19/12
DRAWING NO: JELD0101
SHEET: 4 OF 7

PTC PRODUCT DESIGN GROUP, LLC
PO BOX 520775
LONGWOOD, FLORIDA 32752
Phone: 321.690.1788
Fax: 321.690.1789
Email: info@ptc-corp.com

REV	DESCRIPTION	DATE	BY
A	REVISE SHEETS 1, 3, 4, 5 AND 6.	12/23/13	RJA

Robert J. Amoruso, P.E.
FL P.E. No. 49752

J
5 **VERTICAL CROSS SECTION**
2X BUCK/WOOD FRAMING



I
5 **HORIZONTAL CROSS SECTION**
2X BUCK/WOOD FRAMING
SEE DETAIL ON SHEET 6
FOR HARDWARE INFO

K
5 **VERTICAL CROSS SECTION**
2X BUCK/WOOD FRAMING

PROJECT NUMBER: 413-1207

REV	DESCRIPTION	DATE	BY
A	REVISE SHEETS 1, 3, 4, 5 AND 6.	12/23/13	RJA

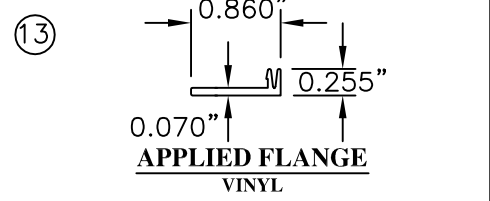
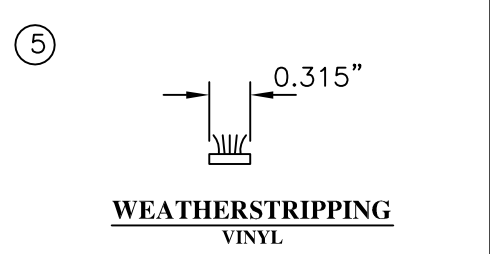
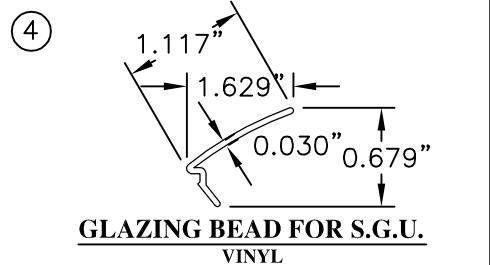
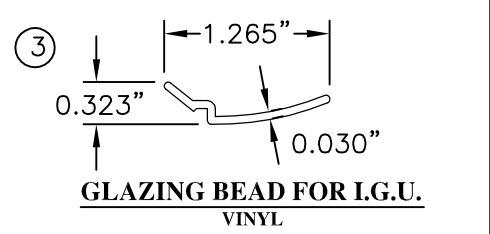
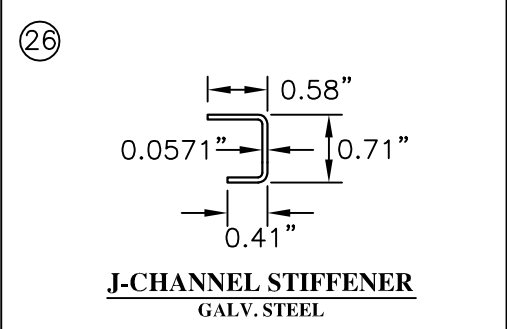
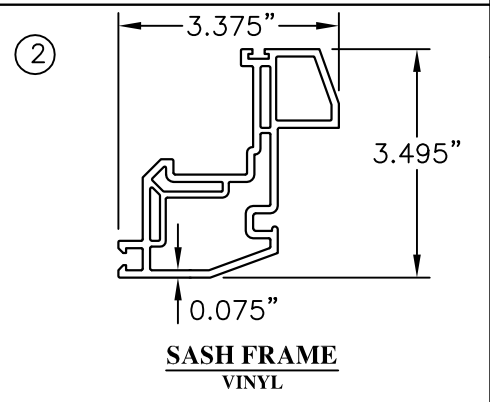
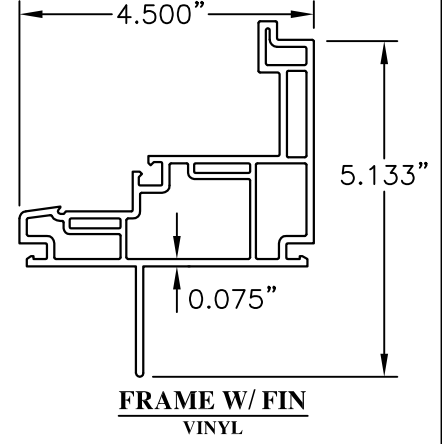
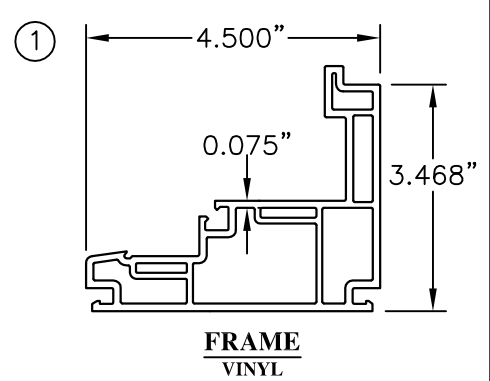
JELD - WEN
3737 LAKEPORT BOULEVARD
KLAMATH FALLS, OR 97601

TITLE: PERMIUM ATLANTIC VINYL AWNING (8800)
LARGE MISSILE IMPACT
VERTICAL AND HORIZONTAL CROSS SECTIONS

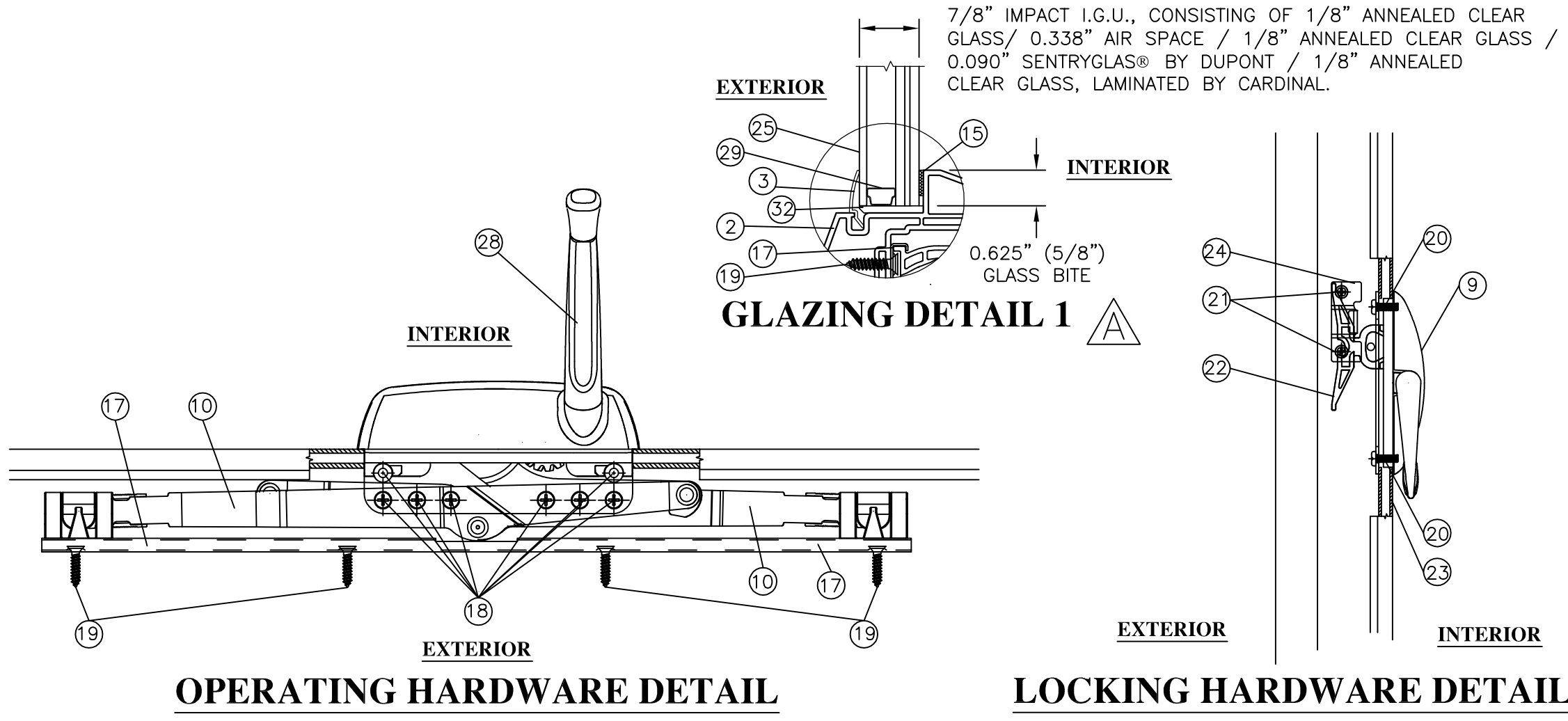
PREPARED BY: TJH
DATE: 06/19/12
SCALE: N.T.S.
DRAWING NO: JELD0101
SHEET: 5 OF 7

PTC PRODUCT DESIGN GROUP, LLC
PO BOX 520775
LONGWOOD, FLORIDA 32752
Phone: 321.690.1788
Fax: 321.690.1789
Email: info@ptc-corp.com

Robert J. Amoruso, P.E.
FL P.E. No. 49752



ITEM #	PART NO.	REQD.	DESCRIPTION	MATERIAL	MANF/SUPPLIER/REMARKS
1	903	1	FRAME WITH OR WITH OUT FIN	VINYL	MIKRON
2	901	1	SASH FRAME	VINYL	MIKRON
3	895	1	GLAZING BEAD FOR I.G.U.	VINYL	MIKRON
5	1093	AS REQ'D	.187" BASE X .250" PILE W/STRIPPING	VINYL	ULTRA FAB
6	2258	2	CONCEALED SNUBBER	STAIN. STEEL	TRUTH
8	—	4	#8 x 1/2" PAN HEAD SHEET METAL SCREWS	STEEL	—
9	1309	1	LOCKING HANDLE	STEEL	TRUTH
10	2269	1	MAXIM SCISSORS AWNING OPERATOR ASSY.	STEEL	TRUTH
11	—	AS REQ'D	3/16" TAPCON SEE ANCHOR SCHRDULE SHEET 1	STEEL	ELCO (OR EQUIV.)
12	—	AS REQ'D	#10 PPH WOOD/TAPPING SCREW SEE ANCHOR SCHEDULE SHT. 1	STEEL	—
13	8864	1	APPLIED FLANGE	VINYL	MIKRON
14	1305	AS REQ'D	WEATHERSTRIPPING	VINYL	ULTRA FAB
15	—	AS REQ'D	DOW 995 SILICONE	SILICONE	DOW-CORNING
16	SCREEN	1	SCREEN FRAME	ALUMINUM	RITE SCREEN
17	02318/02306	1	OPERATOR TRACK & SLIDER ASSEMBLY	STEEL	TRUTH
18	1931	8	#7 x 5/8" P.F.H. SHEET METAL SCREW	STAIN. STEEL	—
19	195	10	#8 x 3/4" P.F.H. SHEET METAL SCREW	STAIN. STEEL	—
20	19298.92	2	#10-24 x 9/16" PAN HEAD TF MACHINE SCREW	STEEL	—
21	19205.92	2	#8 x 1/2" P.F.H. SHEET METAL SCREW	STEEL	—
22	24.32.XX.002	1	LOCK ASSEMBLY	STEEL	TRUTH
23	21600.92	2	SUPPORT PLATE	STEEL	TRUTH
24	05628POO2	1	KEEPER	STEEL	TRUTH
25	I.G. UNITS	1	7/8" IMPACT I.G.U.	GLASS	CARDINAL
26	—	AS REQ'D	"J" CHANNEL STIFFENER	GALV. STEEL	HOMESHIELD
27	—	AS REQ'D	#8 X 7/8" SELF DRILL CAP HEAD SCREW	STEEL	—
28	1271	1	OPERATOR HANDLE	STEEL	TRUTH
29	—	AS REQ'D	0.338" ROLL FORMED SUPER SPACER	STAIN. STEEL	CARDINAL
30	24406.8.2	2	TWO (2) ARM HINGE	STAIN. STEEL	TRUTH
31	24406.7.1	1	VENT HOOK	STAIN. STEEL	TRUTH
32	01934		SETTING BLOCK (NEOPRENE SETTING BLOCKS WITH 70 TO 90 SHORE A DUROMETER HARDNESS ARE REQUIRED AT BOTTOM (SILL) OF FIXED GLAZING LITES MORE THAN 3 FEET IN WIDTH.	NEOPRENE (SHORE DUROMETER HARDNESS 85)	FRANK LOWE



PROJECT NUMBER: 413-1207

REV	DESCRIPTION	DATE	BY
A	REVISE SHEETS 1, 3, 4, 5 AND 6.	12/23/13	RJA

JELD-WEN
 3737 LAKEPORT BOULEVARD
 KLAMATH FALLS, OR 97601

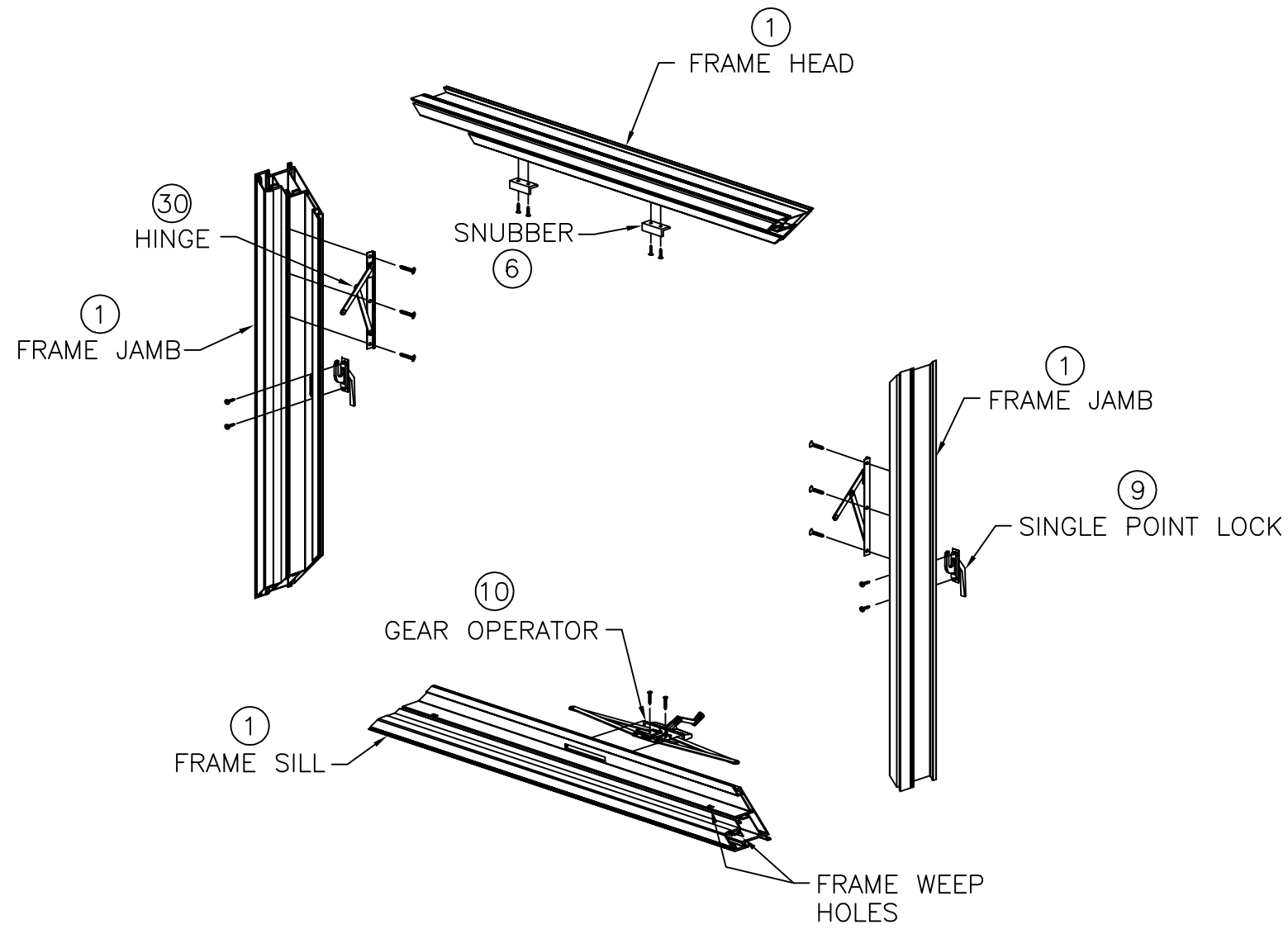
TITLE: PERMIUM ATLANTIC VINYL AWNING (8800)
 LARGE MISSILE IMPACT
 COMPONENTS, BILL OF MATERIALS AND DETAILS

DATE: 06/19/12
 DRAWING NO: JELDO101
 SHEET: 6 OF 7

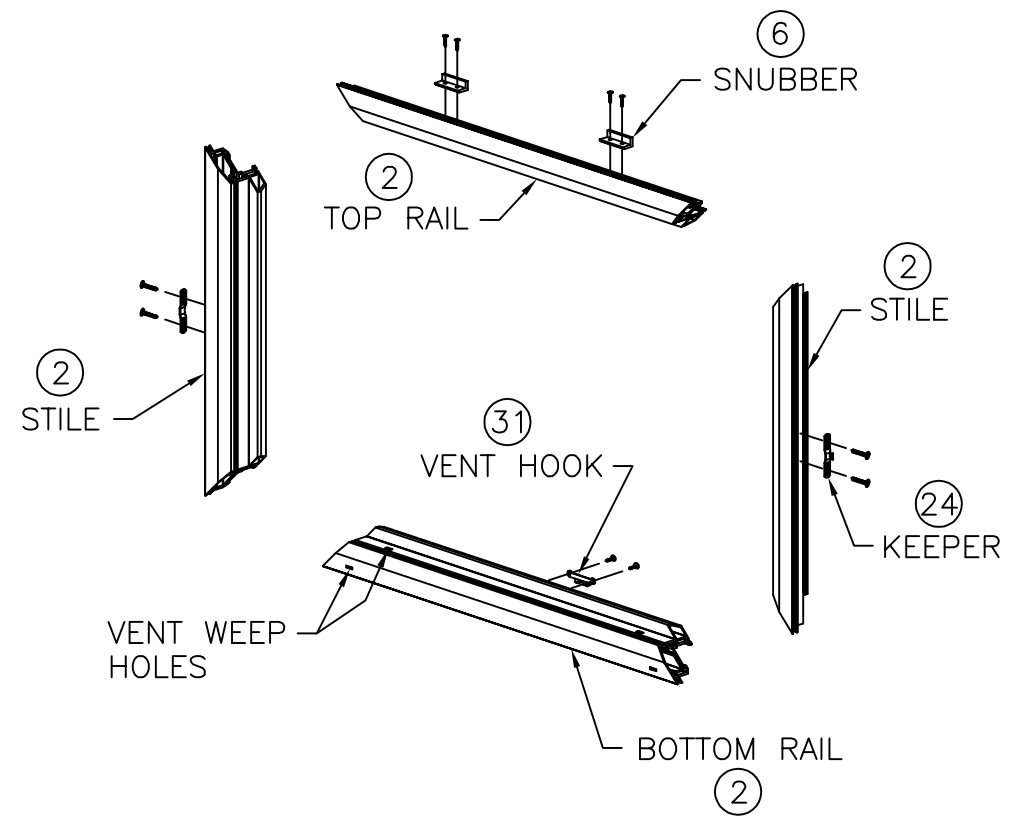
PREPARED BY: TJH
 SCALE: N.T.S.
 REV: A

PTC PRODUCT DESIGN GROUP, LLC
 PO BOX 520775
 LONGWOOD, FLORIDA 32752
 FBPE C.A. NO. 25935
 Phone: 321.690.1788
 Fax: 321.690.1789
 Email: info@ptc-corp.com

Robert J. Amoruso, P.E.
 FL P.E. No. 49752



FRAME ASSEMBLY



VENT ASSEMBLY

PROJECT NUMBER: 413-1207

JELD - WEN
 3737 LAKEPORT BOULEVARD
 KLAMATH FALLS, OR 97601

TITLE: PERMIUM ATLANTIC VINYL AWNING (8800) FRAME & VENT ASSEMBLY DETAILS
 VERTICAL CROSS SECTIONS

PREPARED BY: FBPE
 DRAWN BY: TJH
 SCALE: N.T.S.
 DATE: 06/19/12
 DRAWING NO: JELD0101
 SHEET: 7 OF 7

PTC PRODUCT DESIGN GROUP, LLC
 PO BOX 520775
 LONGWOOD, FLORIDA 32752
 FBPE C.A. NO. 25935
 Phone: 321.690.1788
 Fax: 321.690.1789
 Email: info@ptc-corp.com

REV	DESCRIPTION	DATE	BY
A	REVISE SHEETS 1, 3, 4, 5 AND 6.	12/23/13	RIA

Robert J. Amoruso, P.E.
 FL P.E. No. 49752