

CASEMENT - NON-IMPACT

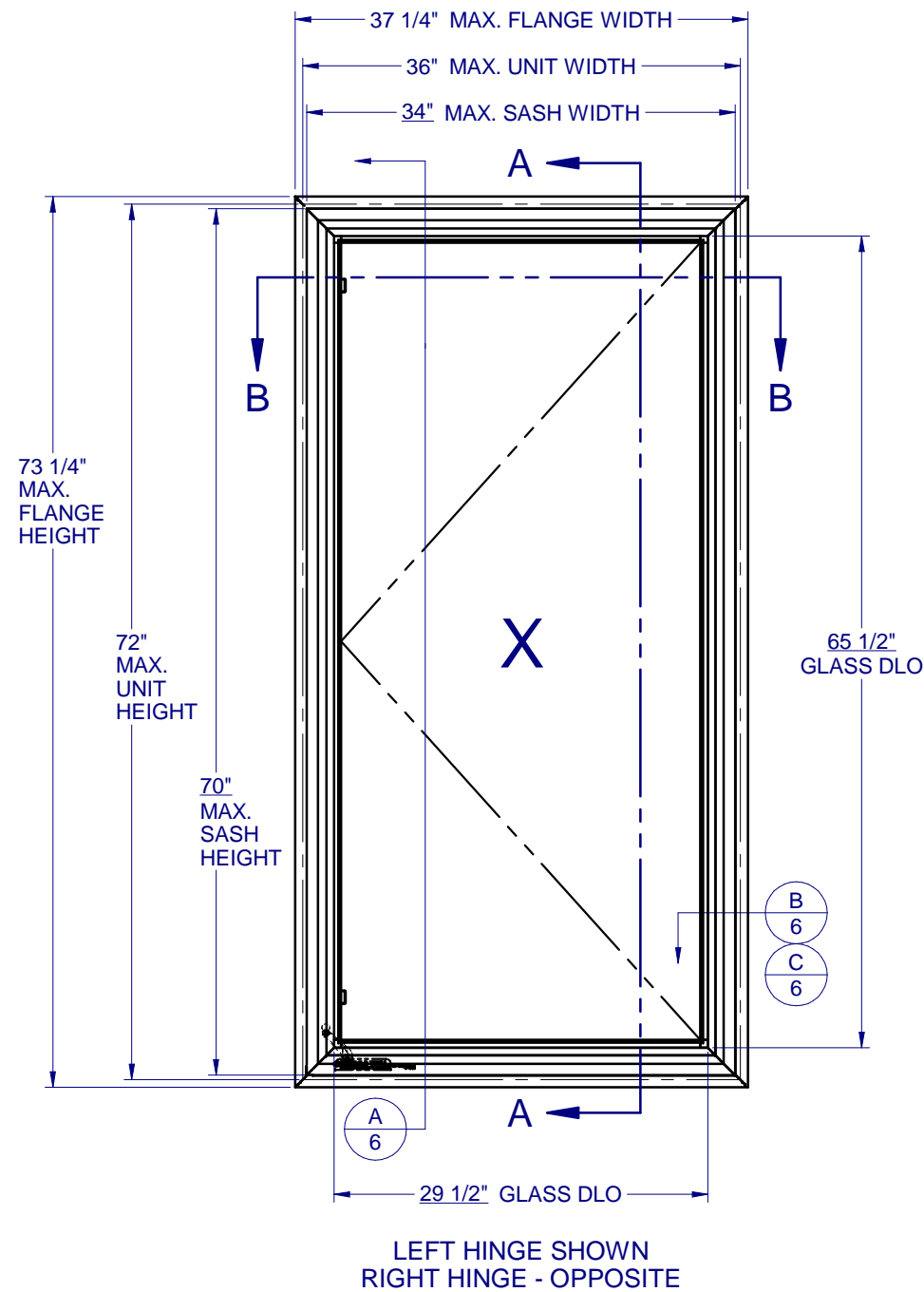


TABLE OF CONTENTS

GENERAL NOTES & ELEVATIONS.....1
 GLAZING DETAILS & DP CHART.....2
 SECTION VIEWS.....3
 BOM & EXTRUSIONS.....4
 ANCHOR SCHEDULE & NOTES.....5
 INSTALLATION DETAILS.....6

MAX. UNIT SIZE	DESIGN PRESSURE RATING	IMPACT RATING
36" x 72"	SEE COMPARATIVE ANALYSIS CHART, SHEET 2	NONE

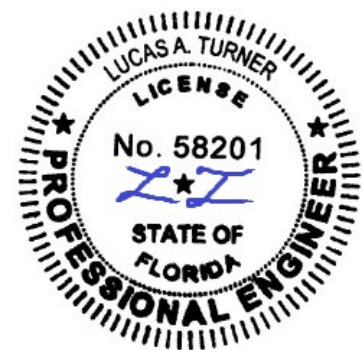
GENERAL NOTES:

1. THE PRODUCT SHOWN HEREIN IS DESIGNED AND MANUFACTURED TO COMPLY WITH THE FLORIDA BUILDING CODE (FBC), CURRENT EDITION AND IS RATED FOR USE IN THE HIGH VELOCITY HURRICANE ZONE (HVHZ).
2. GLAZING OPTIONS: (SEE SHEET 2)
3. CONFIGURATIONS: "X". ALL WINDOWS OPEN TO OUTSIDE - LEFT OR RIGHT.
4. DESIGN PRESSURE RATING (SEE SHEET 2):
 -NEGATIVE DESIGN LOADS BASED ON, TESTED PRESSURE AND GLASS TABLES ASTM E-1300-04e01/09.
 -POSITIVE DESIGN LOADS BASED ON, TESTED PRESSURE, WATER INFILTRATION TEST PRESSURE AND GLASS TABLES ASTM E-1300-04e01/09.
5. ANCHORAGE: THE 33 1/3% STRESS INCREASE HAS NOT BEEN USED IN THE DESIGN OF THIS PRODUCT. SEE SHEET 6 FOR ANCHOR DETAILS. WINDLOAD DURATION FACTOR Cd=1.6 WAS USED FOR WOOD ANCHOR CALCULATIONS.
6. NOT APPROVED FOR IMPACT RESISTANCE. IMPACT PROTECTIVE SYSTEM IS REQUIRED IN WIND BORNE DEBRIS REGION.
7. ALL FRAMES AND VENTS FULLY WELDED.
8. SERIES / MODEL DESIGNATION CA-8400.
9. THE DESIGNATION X AND O STAND FOR THE FOLLOWING:
 X = OPERABLE SASH

Custom
WINDOW SYSTEMS
 1900 SW 44TH AVE.
 OCALA, FLORIDA 34474
 WWW.CWS.CC

8400 PVC CASEMENT NON-IMPACT

PROPRIETARY AND CONFIDENTIAL
 THE INFORMATION CONTAINED IN THIS DRAWING IS THE SOLE PROPERTY OF CUSTOM WINDOW SYSTEMS, INC. ANY REPRODUCTION IN PART OR AS A WHOLE WITHOUT THE WRITTEN PERMISSION OF CUSTOM WINDOW SYSTEMS, INC IS PROHIBITED.



8/05/2020

LUCAS A. TURNER, P.E.
 FL PE # 58201
 2428 Old Natchez Trc Trl
 Camden, TN 38320
 PH. 941-380-1574

SHEET DESCRIPTION:

GENERAL NOTES AND ELEVATIONS

DRAWN BY: ADE	DATE: 07/27/07
DWG #: CWS-508	REV.: D
SCALE: 1:14.29	SHEET 1 OF 6

DESIGN PRESSURES (PSF) FOR "X" CONFIGURATION WITH 3/16 ANNEALED IGU GLAZING or 3/16 TEMPERED IGU GLAZING

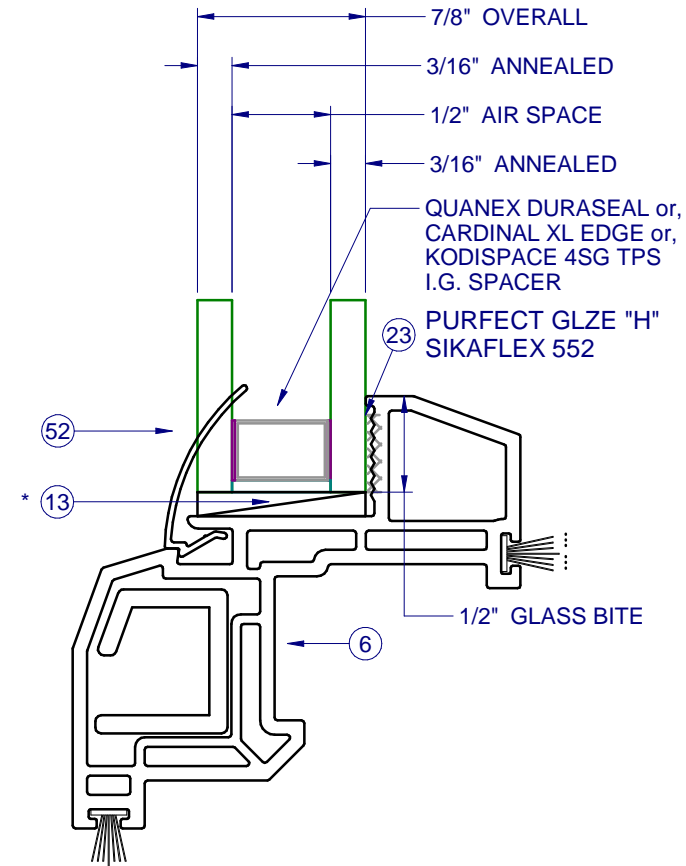
Unit	Glass	Unit Height (in.)									
Width (in.)	Type	18	24	30	36	42	48	54	60	66	72
18	A, B	+67.5 / -90.0	+67.5 / -90.0	+67.5 / -90.0	+67.5 / -90.0	+67.5 / -90.0	+67.5 / -90.0	+67.5 / -90.0	+67.5 / -90.0	+67.5 / -90.0	+67.5 / -90.0
24	A, B	+67.5 / -90.0	+67.5 / -90.0	+67.5 / -90.0	+67.5 / -90.0	+67.5 / -90.0	+67.5 / -90.0	+67.5 / -90.0	+67.5 / -90.0	+67.5 / -90.0	+67.5 / -81.0
30	A, B	+67.5 / -90.0	+67.5 / -90.0	+67.5 / -86.4	+67.5 / -86.4	+67.5 / -86.4	+67.5 / -86.4	+67.5 / -86.4	+67.5 / -86.4	+67.5 / -76.2	+67.5 / -68.2
36	A, B	+67.5 / -80.0	+67.5 / -67.5	+61.7 / -61.7	+60.0 / -60.0	+60.0 / -60.0	+60.0 / -60.0	+60.0 / -60.0	+60.0 / -60.0	+60.0 / -60.0	+60.0 / -60.0



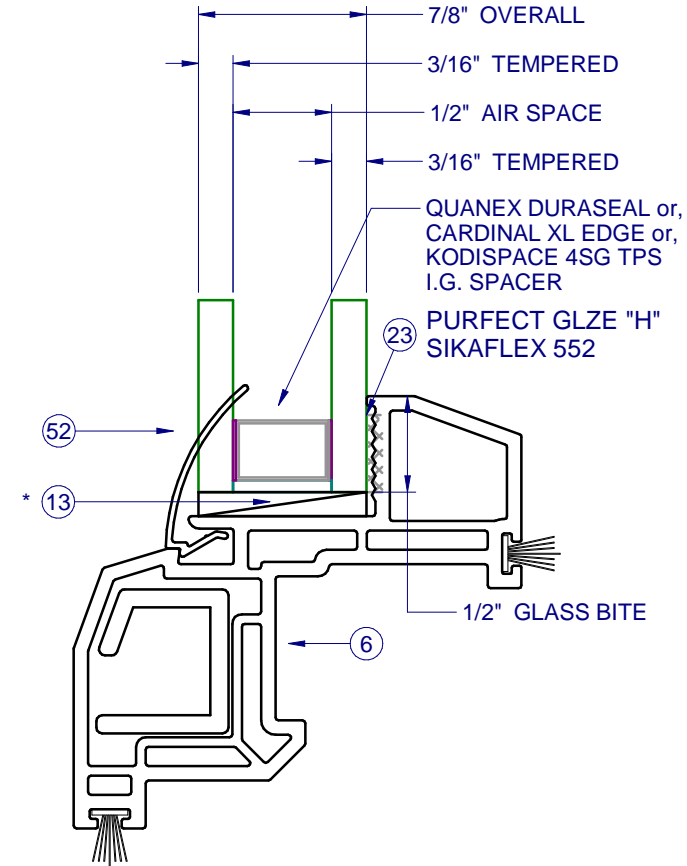
1900 SW 44TH AVE.
OCALA, FLORIDA 34474
WWW.CWS.CC

**8400 PVC CASEMENT
NON-IMPACT**

PROPRIETARY AND CONFIDENTIAL
THE INFORMATION CONTAINED IN THIS DRAWING IS THE SOLE PROPERTY OF CUSTOM WINDOW SYSTEMS, INC. ANY REPRODUCTION IN PART OR AS A WHOLE WITHOUT THE WRITTEN PERMISSION OF CUSTOM WINDOW SYSTEMS, INC IS PROHIBITED.



GLASS TYPE A



GLASS TYPE B



8/05/2020

LUCAS A. TURNER, P.E.
FL PE # 58201
2428 Old Natchez Trc Trl
Camden, TN 38320
PH. 941-380-1574

SHEET DESCRIPTION:
**COMPARATIVE ANALYSIS
AND GLAZING DETAILS**

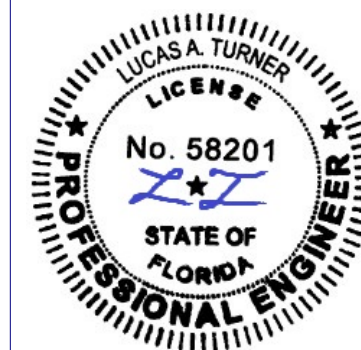
DRAWN BY: ADE	DATE: 07/27/07
DWG #: CWS-508	REV.: D
SCALE: 1:1	SHEET 2 OF 6

* SETTING BLOCKS PER FBC 2411.3.3.1

NOTE: IF SIZE INTENDED IS NOT SHOWN, USE NEXT LARGER SIZE.

**8400 PVC
CASEMENT
NON-IMPACT**

PROPRIETARY AND CONFIDENTIAL
THE INFORMATION CONTAINED IN
THIS DRAWING IS THE SOLE
PROPERTY OF CUSTOM WINDOW
SYSTEMS, INC. ANY
REPRODUCTION IN PART OR AS A
WHOLE WITHOUT THE WRITTEN
PERMISSION OF CUSTOM WINDOW
SYSTEMS, INC IS PROHIBITED.



8/05/2020

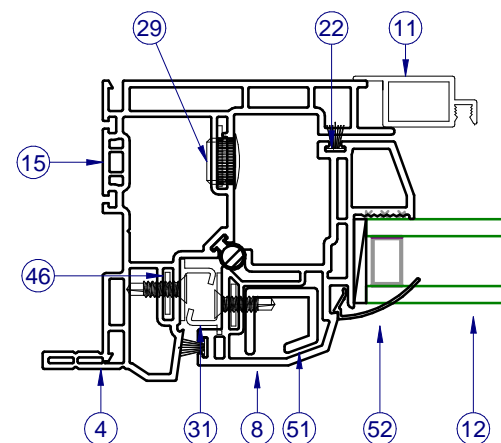
LUCAS A. TURNER, P.E.
FL PE # 58201
2428 Old Natchez Trc Trl
Camden, TN 38320
PH. 941-380-1574

SHEET DESCRIPTION:

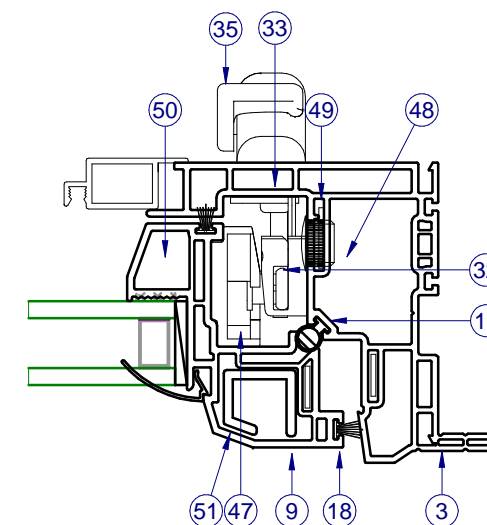
SECTION VIEWS

DRAWN BY:	DATE:
ADE	07/27/07
DWG #:	REV.:
CWS-508	D
SCALE:	SHEET
1:2	3 OF 6

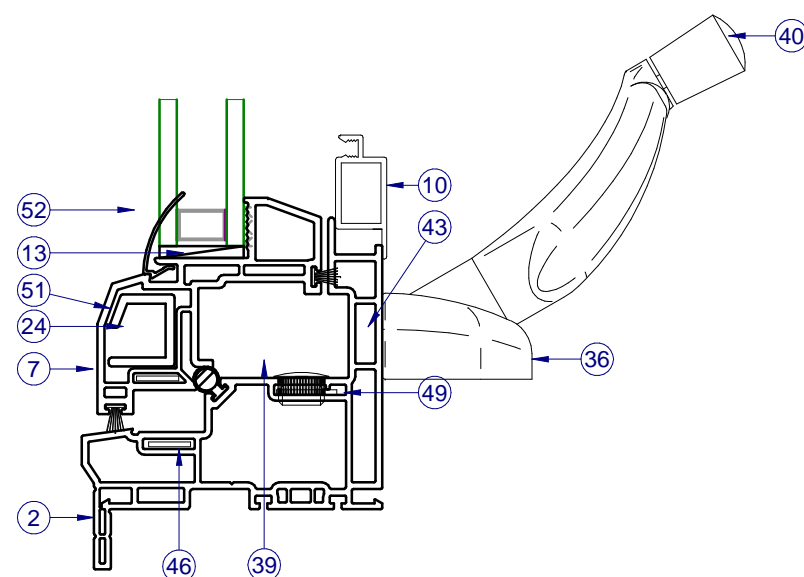
INTERIOR



SECTION VIEW B-B



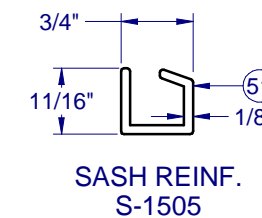
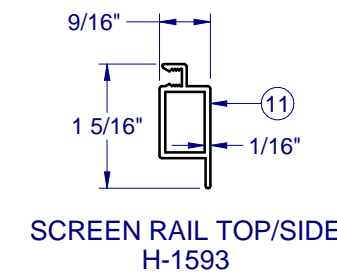
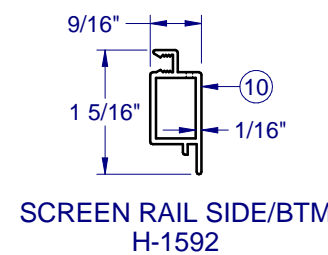
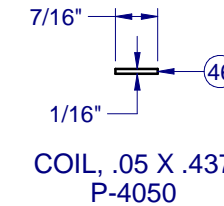
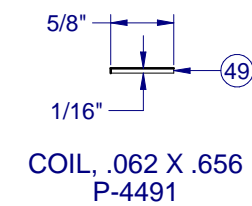
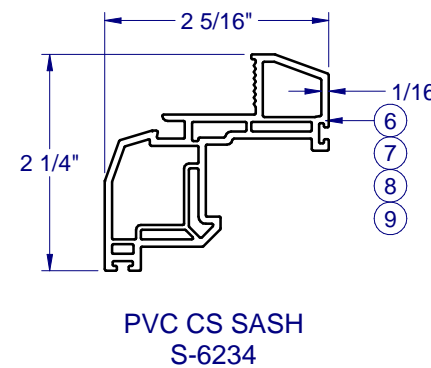
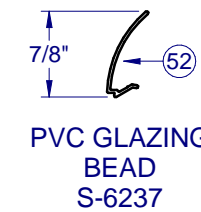
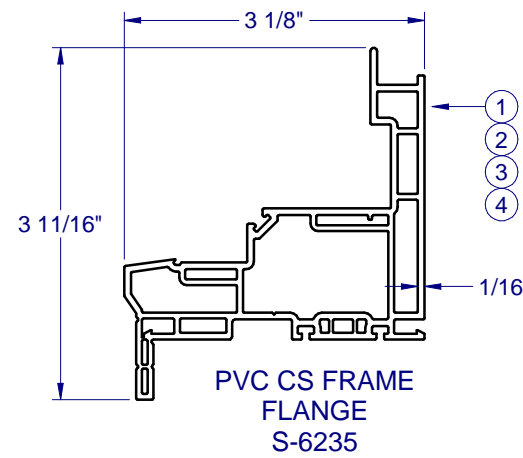
INTERIOR



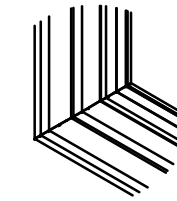
SECTION VIEW A-A

ITEMS NOT SHOWN FOR CLARITY:
14, 16-17, 19-20, 25, 27, 32, 34, 37-38, 42, 44-45, 50

PARTS LIST			
ITEM	PART #	DESCRIPTION	MATERIAL
1	H-6235	FR., CASE., MAIN, HEAD	PVC
2	H-6235	FR., CASE., MAIN, SILL	PVC
3	H-6235	FR., CASE., MAIN, JB., RIGHT	PVC
4	H-6235	FR., CASE., MAIN, JB., LEFT	PVC
6	H-6234	SASH, CASE., TOP RAIL	PVC
7	H-6234	SASH, CASE., BOT. RAIL	PVC
8	H-6234	SASH, CASE., SIDE RAIL, HINGE	PVC
9	H-6234	SASH, CASE., SIDE RAIL, LOCK	PVC
10	H-1592	SCREEN RAIL, SIDE/BTM	ALUM
11	H-1593	SCREEN RAIL, TOP/SIDE	ALUM
12	GLASS	SEE SHEET 2	
13	P-5615	SET. BLK., 85 DUR., 1/8" X 1" X 2" LG.	RUBBER
14	P-3029	SCREEN LIFT-OUT	
16	P-3195	SCREEN SPRING, NO HOLE TENSION	
17	P-3197	SCREEN CORNER KEY	NYLON
18	P-5573	WSTP., BULB, HOLLOW, T-SLOT, .187 X .358	RUBBER
19	P-3228	SCREEN SPLINE, .155 DIA, BLK	
20		SPACER, SEE SHEET 3	
23		PURFECT GLAZE "H", SIKAFLEX 552	
24	P-3539	#8 X 3/4" QUAD PH TEK, ZINC, SCREW	
25	P-3581	SCREEN CLOTH, 18 X 16 FIBERGLASS	
26	P-3587	#8 X 1" PH FH TEK 2, SS, SCREW	SS
27	P-3613	CWS LBL. (LOGO)	
28	P-3685	CS-8400 GOLD CERT. LABEL, NFRC TAB	
29	P-5588	CAP PLUG, 1/2" HOLE	NYLON
30	P-3881	TEMPORARY LBL. (NFRC/DP)	
31	P-3940	SNUBBER, SS, PVC	
32	P-4003	TIE BAR GUIDE, ROTO. HDWE.	SS
33	P-4004	#8-32 X 1/2" PH PH, MS, SS (ROTO HDWE. LOCK)	SS
34	P-4005	SUPPORT PLATE, LOCK, SS, ROTO HDWE. (Use w/ P-4006)	SS
35	P-4006	LOCK, MULTI-POINT, ROTO HDWE., WHITE	SS
36	P-4007	ROTO. OPERATORS (FOR LEFT/RIGHT OPEN CASEMENT)	SS
37	P-4009	TRACK & SLIDER ASSM., ROTO OPER., ROTO HDWE., (13")	SS
38	P-4010	STUD BRKT., ROTO OPER., L.H., ROTO HDWE.	SS
39	P-4012	SHIM, ROTO OPERATOR, ROTO HDWE. (4.8mm)	NYLON
40	P-4503	HANDLE, STD, ROTO OPER, ROTO HDWE. (WHITE)	ZINC
41	P-4018	HINGES (LEFT/RIGHT FOR LEFT OR RIGHT OPEN CASEMENT)	SS
42	P-4020	SUPPORT WASHER, ROTO OPER, ROTO HDWE. (SS)	SS
43	P-4021	#8-32 x 3/4" Quad FH W/ 1/16" Lead, MS, SS, ROTO OP., ROTO	SS
44	P-4024	GASKET, ROTO OPER., ROTO HDWE., 1/16"	
45	P-4031-P-4040	TIE-BARS, ROTO HDWE. 1-5 LOCKPOINTS, SS (BY OA HGT.)	SS
46	P-4050	REINF. COIL-ALUMINUM, 5052-H32 (.050 X .437), HD	ALUM
47	P-4043	STRIKE, MULTIPPOINT	NYLON
48	P-4146	#8 x 3/4" PH FLAT TEK, SS	SS
49	P-4491	REINF. COIL-ALUMINUM, 5052-H32 (.062 X .656), HD	ALUM
50	P-4641	#8 x 5/8" PH FLAT TEK, #7 HEAD, SS	SS
51	S-1505	REINF. CASE. SASH	ALUM
52	S-6237	GLZ. BD., 7/8"	PVC



FRAME AND SASH CORNER CONSTRUCTION



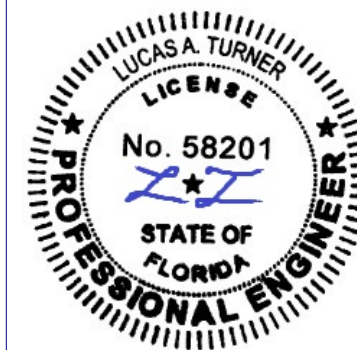
CORNER WELD (ALL SIDES) 1:8

Custom WINDOW SYSTEMS

1900 SW 44TH AVE.
OCALA, FLORIDA 34474
WWW.CWS.CC

8400 PVC CASEMENT NON-IMPACT

PROPRIETARY AND CONFIDENTIAL
THE INFORMATION CONTAINED IN THIS DRAWING IS THE SOLE PROPERTY OF CUSTOM WINDOW SYSTEMS, INC. ANY REPRODUCTION IN PART OR AS A WHOLE WITHOUT THE WRITTEN PERMISSION OF CUSTOM WINDOW SYSTEMS, INC IS PROHIBITED.



8/05/2020

LUCAS A. TURNER, P.E.
FL PE # 58201
2428 Old Natchez Trc Trl
Camden, TN 38320
PH. 941-380-1574

SHEET DESCRIPTION:

BOM AND EXTRUSIONS

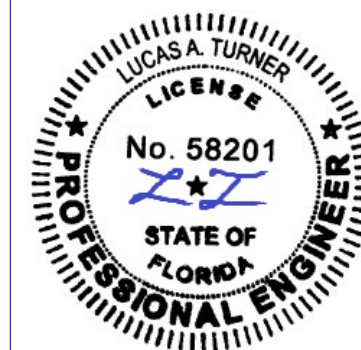
DRAWN BY: ADE	DATE: 07/27/07
DWG #: CWS-508	REV.: D
SCALE: 1:2	SHEET 4 OF 6

LINE ITEMS NOT USED:
5, 21-22

NOTE: ALL ALUMINUM EXTRUSIONS ARE 6063-T6 UNLESS OTHERWISE NOTED.

**8400 PVC
CASEMENT
NON-IMPACT**

PROPRIETARY AND CONFIDENTIAL
THE INFORMATION CONTAINED IN
THIS DRAWING IS THE SOLE
PROPERTY OF CUSTOM WINDOW
SYSTEMS, INC. ANY
REPRODUCTION IN PART OR AS A
WHOLE WITHOUT THE WRITTEN
PERMISSION OF CUSTOM WINDOW
SYSTEMS, INC IS PROHIBITED.



8/05/2020

LUCAS A. TURNER, P.E.
FL PE # 58201
2428 Old Natchez Trc Trl
Camden, TN 38320
PH. 941-380-1574

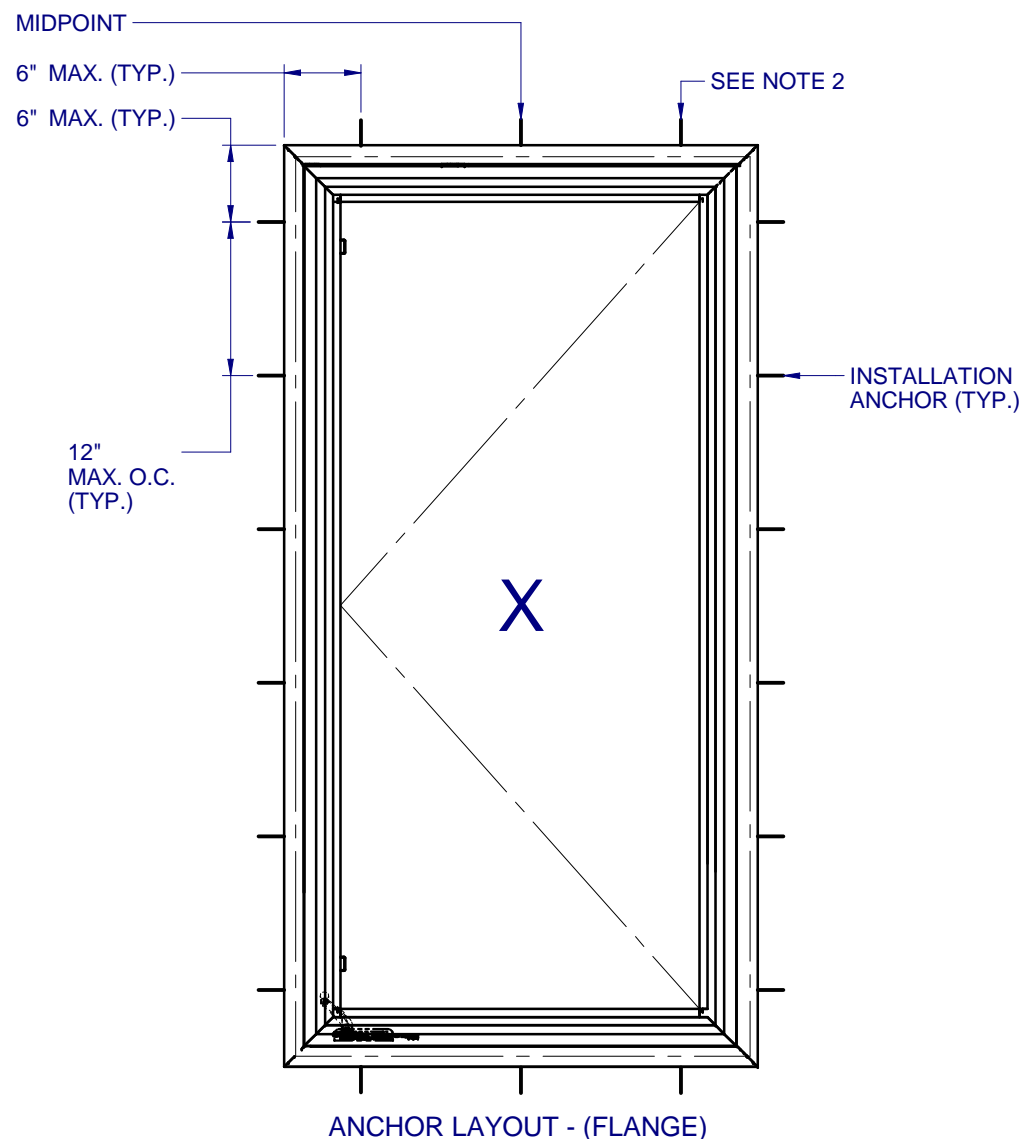
SHEET DESCRIPTION:

**ANCHOR SCHEDULE AND
NOTES**

DRAWN BY:	DATE:
ADE	07/27/07

DWG #:	REV.:
CWS-508	D

SCALE:	SHEET
1:14.29	5 OF 6



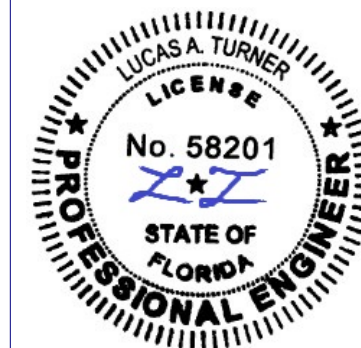
ANCHOR LAYOUT - (FLANGE)

NOTES:

1. INSTALL ONE ANCHOR AT EACH INSTALLATION LOCATION. SILL ANCHOR SPACING SAME AS HEAD.
2. SHIM AS REQ AT EACH INSTALLATION ANCHOR USING LOAD BEARING SHIMS. MAX. ALLOWABLE SHIM STACK TO BE 1/4". USE SHIMS WHERE SPACE GREATER THAN 1/16" IS PRESENT. LOAD BEARING SHIMS SHALL BE CONSTRUCTED OF HIGH DENSITY PLASTIC OR BETTER. WOOD SHIMS ARE NOT ALLOWED.
3. ANCHOR TYPE, SIZE, SPACING AND EMBEDMENT SHALL BE AS SPECIFIED IN THESE DRAWINGS, SEE TABLE 1, SHEET 6.
4. ALL INSTALLATION ANCHORS MUST BE MADE OF OR PROTECTED WITH A CORROSION RESISTANT MATERIAL OR COATING. DISSIMILAR METALS OR MATERIALS IN CONTACT WITH PRESSURE TREATED WOOD MUST BE PROTECTED TO PREVENT REACTION.
5. INSTALLATION ANCHORS SHALL BE IN ACCORDANCE WITH ANCHOR MANUFACTURER'S INSTALLATION INSTRUCTIONS, AND ANCHORS SHALL NOT BE USED IN SUBSTRATES WITH STRENGTHS LESS THAN THE MINIMUM SPECIFIED IN TABLE 1, SHEET 6.
6. ANCHOR EMBEDMENT TO SUBSTRATE SHALL BE BEYOND WALL DRESSING OR STUCCO. FOR CONCRETE/CMU OPENINGS, EMBEDMENT SHALL BE BEYOND WOOD BUCKS, IF USED, INTO SUBSTRATE - 1X BUCKS ARE OPTIONAL.
7. A MINIMUM CENTER-TO-CENTER SPACING SHALL BE MAINTAINED BETWEEN ALL FASTENERS: 3" FOR MASONRY, 1" FOR WOOD AND METAL.
8. WOOD OR MASONRY OPENINGS, BUCKS AND BUCK FASTENERS SHALL BE PROPERLY DESIGNED BY THE ARCHITECT OR ENGINEER OF RECORD AND INSTALLED TO TRANSFER WIND LOADS TO THE STRUCTURE. SUBSTRATES SHALL MEET THE MINIMUM STRENGTH REQUIREMENTS AS SHOWN IN TABLE1, SHEET 6. CONCRETE AND MASONRY SUBSTRATES MAY NOT BE CRACKED.
9. SEALING AND FLASHING STRATEGIES FOR OVERALL WATER RESISTANCE OF INSTALLATION SHALL BE DONE BY OTHERS FOLLOWING THE CURRENT VERSION OF THE REFERENCE DOCUMENTS: FMA/AAMA 100(FIN WINDOWS), FMA/AAMA 200(FLANGE WINDOWS), FMA/WDMA 250(BOX WINDOWS), FMA/AAMA/WDMA 300(EXTERIOR DOORS)

**8400 PVC
CASEMENT
NON-IMPACT**

PROPRIETARY AND CONFIDENTIAL
THE INFORMATION CONTAINED IN THIS DRAWING IS THE SOLE PROPERTY OF CUSTOM WINDOW SYSTEMS, INC. ANY REPRODUCTION IN PART OR AS A WHOLE WITHOUT THE WRITTEN PERMISSION OF CUSTOM WINDOW SYSTEMS, INC IS PROHIBITED.



8/05/2020

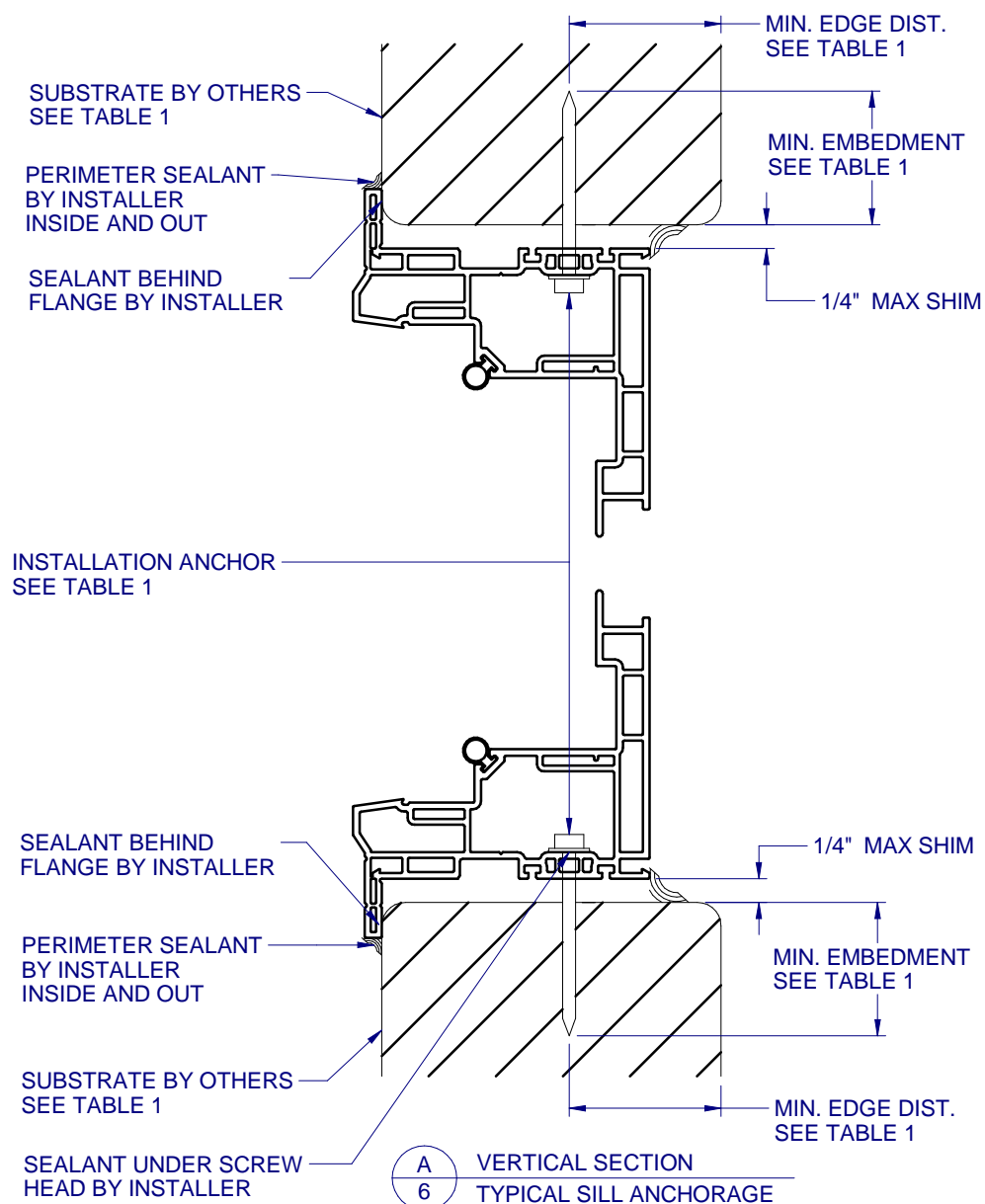
LUCAS A. TURNER, P.E.
FL PE # 58201
2428 Old Natchez Trc Trl
Camden, TN 38320
PH. 941-380-1574

SHEET DESCRIPTION:

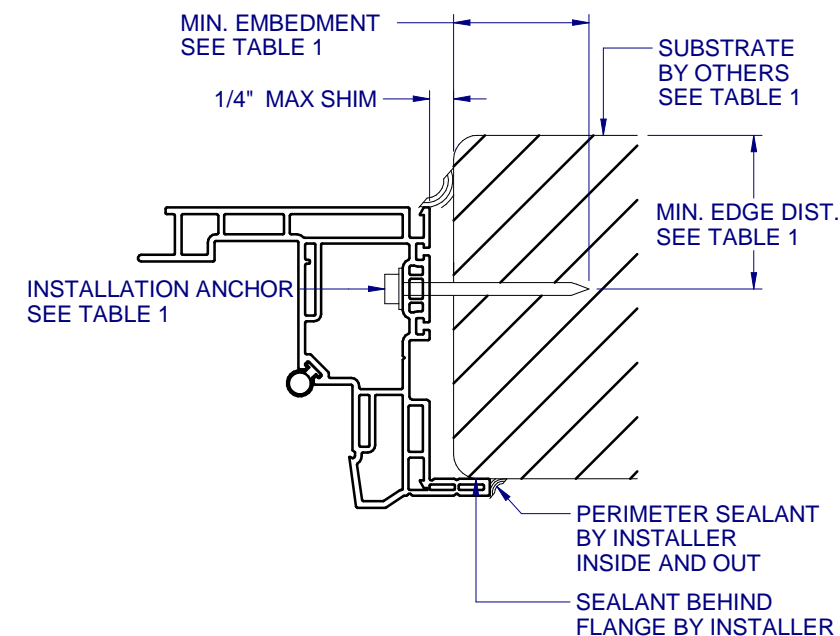
INSTALLATION DETAILS

DRAWN BY:	DATE:
ADE	07/27/07
DWG #:	REV.:
CWS-508	D
SCALE:	SHEET
1:2	6 OF 6

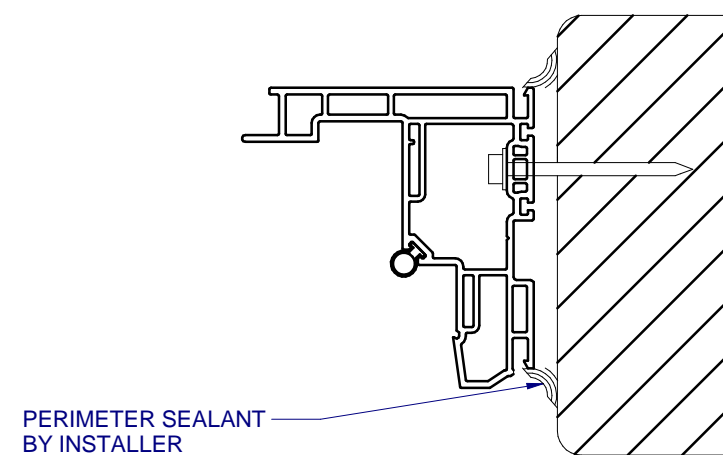
TYPICAL HEAD ANCHORAGE



A VERTICAL SECTION
6 TYPICAL SILL ANCHORAGE



B HORIZONTAL SECTION
6 TYPICAL JAMB ANCHORAGE



C HORIZONTAL SECTION
6 BOX FRAME INSTALLATION HEAD AND SILL SIMILAR FOR BOX INSTALLATION

FLANGE REMOVAL NOTE: PARTIALLY OR FULLY REMOVING THE FLANGE, UP TO AND INCLUDING A BOX-FRAME APPLICATION IS ACCEPTABLE PROVIDED:

- MIN. 1/4" FILLET OF CONSTRUCTION-GRADE ADHESIVE CAULK IS APPLIED INSIDE AND OUT, FULL PERIMETER, BY INSTALLER.
- PRODUCT ANCHORAGE IS IN ACCORDANCE WITH REQUIREMENTS AS SHOWN FOR FLANGE WINDOWS.

TABLE 1: APPROVED INSTALLATION FASTENERS

SUBSTRATE TYPE	ANCHOR TYPE	MIN. EMBEDMENT	MIN. EDGE DIST.
CONCRETE (2.0 KSI MIN.)	3/16" ITW TAPCON	1"	1-1/8"
HOLLOW OR GROUT-FILLED CMU (117 PCF MIN.)	3/16" ITW TAPCON	1"	2"
CONCRETE (2.85 KSI MIN.)	3/16" ELCO ULTRACON	1"	1"
GROUT-FILLED CMU (ASTM C-90)	3/16" ELCO ULTRACON	1-1/4"	2-1/2"
2X MIN. SPRUCE-PINE-FIR (G=0.42)	3/16" ITW TAPCON OR ELCO ULTRACON	1-3/8"	7/8"
2X MIN. SPRUCE-PINE-FIR (G=0.42)	#10 WOOD SCREW	1-3/8"	7/8"
16 GAUGE (0.060") MIN. STEEL STUD (33 KSI YIELD MIN)	#10-16 HILTI KWIK-FLEX OR ITW TEKS SELF-DRILLING SCREW	FULL THREAD THRU 0.060"	7/16"
1/8" ALUM. (6063-T5 MIN.) OR 1/8" STEEL (33 KSI MIN.)	#10 GRADE 5 SELF-TAPPING / DRILLING SCREW	FULL THREAD THRU 0.125"	7/16"