

KAWNEER 8225TL CASEMENT PROJECT-OUT THERMAL WINDOWS

GENERAL NOTES

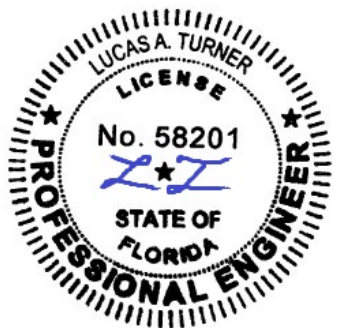
1. THIS WINDOW SYSTEM HAS BEEN TESTED TO ASTM E283, ASTM E330, ASTM E331, ASTM E1886, ASTM E1996, AND TAS 201/202/203, AND MEETS THE REQUIREMENTS OF THE FLORIDA BUILDING CODE (FBC), CURRENT EDITION, INCLUDING THE HIGH VELOCITY HURRICANE ZONE.
2. THE INSTALLED WINDOW SYSTEM SHALL BE FABRICATED, GLAZED, AND ANCHORED IN ACCORDANCE WITH THIS DRAWING AND APPLICABLE TEST REPORTS, OR AS INDICATED BY THE ENGINEER OF RECORD IN APPROVED SHOP DRAWINGS.
3. THIS DRAWING INDICATES VARIOUS APPROVED GLAZING METHODS AND FRAMING TYPES WHICH MAY BE USED SINGLY OR IN COMBINATION FOR EACH PROJECT. ANY NUMBER OF PANELS/WINDOWS MAY BE USED HORIZONTALLY PROVIDED THE MAXIMUM DLO SIZES AS INDICATED IN THIS DRAWING ARE NOT EXCEEDED.
4. THIS PRODUCT IS LARGE AND SMALL MISSILE IMPACT RESISTANT (SEE APPROVED GLAZING TYPES SHEET 6 OF THIS DRAWING FOR GLAZING TYPES THAT ARE APPROVED FOR LARGE AND FOR SMALL MISSILE PERFORMANCE), AND DOES NOT REQUIRE THE USE OF APPROVED SHUTTERS IN WINDBORNE DEBRIS AREAS.
5. REQUIRED DESIGN PRESSURES SHALL BE DETERMINED FOR EACH PROJECT IN ACCORDANCE WITH APPLICABLE CODE REQUIREMENTS AND GOVERNING WIND SPEEDS FOR THE PROJECT LOCATION.
6. THE ALLOWABLE DESIGN PRESSURES AND LOAD CAPACITIES SHOWN IN THIS DRAWING ARE ALLOWABLE STRESS DESIGN (ASD) BASIS AND ARE AS LIMITED BY ASTM E-1300 GLASS TABLES AND TESTED PRESSURES. ALTERNATE COMPARATIVE OR RATIONAL ANALYSIS CALCULATIONS COMPLIANT WITH FBC AS DEEMED APPROPRIATE ON A PROJECT BASIS BY THE ENGINEER OF RECORD ARE ACCEPTABLE.
7. DISSIMILAR MATERIALS THAT COME INTO CONTACT, INCLUDING BUT NOT LIMITED TO FASTENERS IN CONTACT WITH PRESSURE TREATED WOOD SUBSTRATES OR ALUMINUM, SHALL BE COATED OR OTHERWISE PROTECTED PER FBC REQUIREMENTS TO PREVENT CORROSION OR GALVANIC REACTIONS.
8. SEALING AND FLASHING STRATEGIES FOR OVERALL WATER INFILTRATION RESISTANCE OF THE INSTALLED PRODUCT IS NOT WITHIN THE SCOPE OF THIS APPROVAL AND SHALL BE THE RESPONSIBILITY OF OTHERS.
9. THE 4/3 ALLOWABLE STRESS INCREASE HAS NOT BEEN USED IN THE ANCHOR ANALYSIS FOR THIS SYSTEM. THE 1.6 Cd FACTOR WAS USED IN THE ANALYSIS OF WOOD SUBSTRATE.
10. STRUCTURAL INTEGRITY OF SUBSTRATE MATERIALS TO RECEIVE THE LOADS FROM THIS PRODUCT, AND INSTALLATION OF WOOD BUCKS OR OTHER ACCESSORIES TO THE SUBSTRATE, TO BE ENGINEERED BY OTHERS OR AS APPROVED BY THE AUTHORITY HAVING JURISDICTION.
11. THIS PRODUCT SHALL BE INSTALLED USING ONE OF THE APPROVED FASTENING METHODS INDICATED IN THIS DRAWING, AS APPROPRIATE FOR THE SUBSTRATE TYPE, OR AS INDICATED BY THE ENGINEER OF RECORD IN APPROVED SHOP DRAWINGS. ANCHOR SIZE, EMBEDMENT, EDGE DISTANCE, AND LOCATIONS, SHALL BE IN ACCORDANCE WITH THESE DRAWINGS OR AS INDICATED IN APPROVED SHOP DRAWINGS. ENSURE 1-1/2" MIN. CENTER-TO-SPACING BETWEEN ANY TWO INSTALLATION FASTENERS.
12. MINIMUM ANCHOR EMBEDMENTS LISTED IN THIS DRAWING SHALL BE BEYOND WALL DRESSING OR STUCCO AND FULLY INTO SUBSTRATE. LOAD-BEARING SHIMS SHALL BE USED AT ALL ANCHOR LOCATIONS WHERE A GAP OF MORE THAN 1/16" EXISTS BETWEEN THE PRODUCT AND OPENING SUBSTRATE. MAXIMUM SHIM GAP IS AS INDICATED IN THESE DRAWINGS.
13. SUBSTRATES SHALL MEET THE MINIMUM STRENGTH REQUIREMENTS AS SHOWN IN TABLE 1 IN SECTION 6. CONCRETE OR MASONRY SUBSTRATES SHALL NOT BE CRACKED. FOR INSTALLATION TO METAL SUBSTRATES, ANCHORS SHALL BE LONG ENOUGH TO BE FULLY THREADED THROUGH THE METAL THICKNESS WITH AN ADDITIONAL 3/16" MIN. OF THREADS BEYOND.
14. CONSTRUCTION NOTES: THE VERTICAL FRAME MEMBERS RUN THROUGH WHILE THE HORIZONTAL MEMBERS ARE COPED & BUTTED TO THE VERTICAL FRAME MEMBER. THE VERTICAL MEMBERS ARE FASTENED TO THE HORIZONTAL MEMBERS WITH ANCHORS INTO SCREW SPLINES. ALL CONSTRUCTION SHALL BE IN ACCORDANCE WITH KAWNEER INSTALLATION INSTRUCTIONS.

TABLE OF CONTENTS

SHEET	DESCRIPTION
1	GENERAL NOTES
2	SAMPLE ELEVATIONS
3	SAMPLE ELEVATIONS AND DP CHART, PROJECT-OUT
3-5	SECTION DETAILS
6	APPROVED GLAZING TYPES, GLAZING DETAILS
7	DESIGN PRESSURE CHARTS, HARDWARE TABLE
8	PERIMETER ANCHOR DETAILS
9	EXTRUSION PROFILES, MATERIAL PARTS LIST



555 GUTHRIDGE COURT
NORCROSS, GEORGIA 30092
PH. 770-449-5555
WWW.KAWNEER.COM



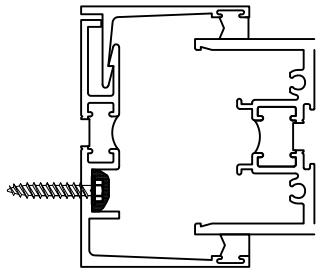
3/7/2024
LUCAS A. TURNER
FL P.E. #58201

TURNER ENGINEERING &
CONSULTING, INC.
2428 OLD NATCHEZ TRACE TRL.
CAMDEN, TN 38320
PH. 941-380-1574

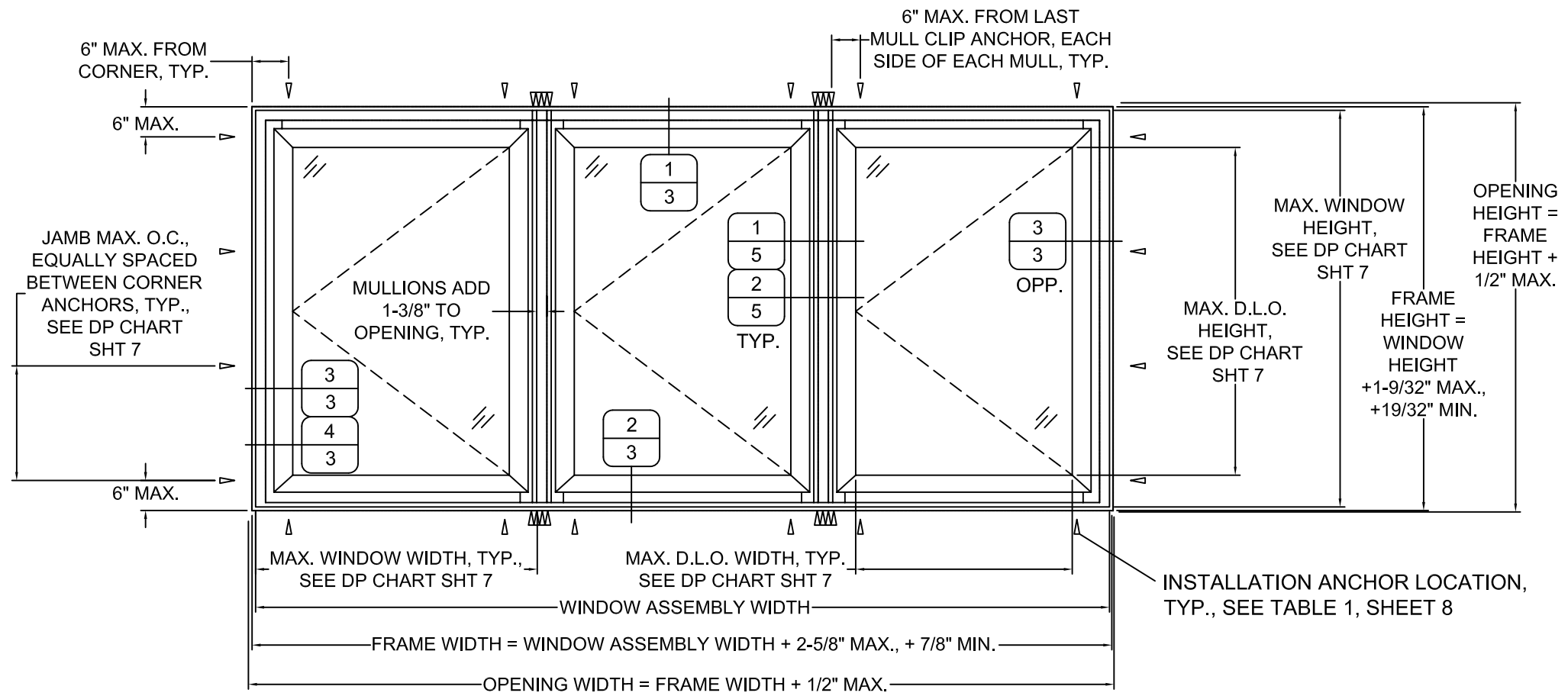
DRAWING NO. 8225TL-CA-FPA	PRODUCT 8225TL CA
FPA # FL46588	
DATE 2/29/2024	
SCALE NTS	SHEET 1 OF 9

2/29/2024	DATE
-	REV. #
INITIAL RELEASE	PRINTS ISSUED FOR

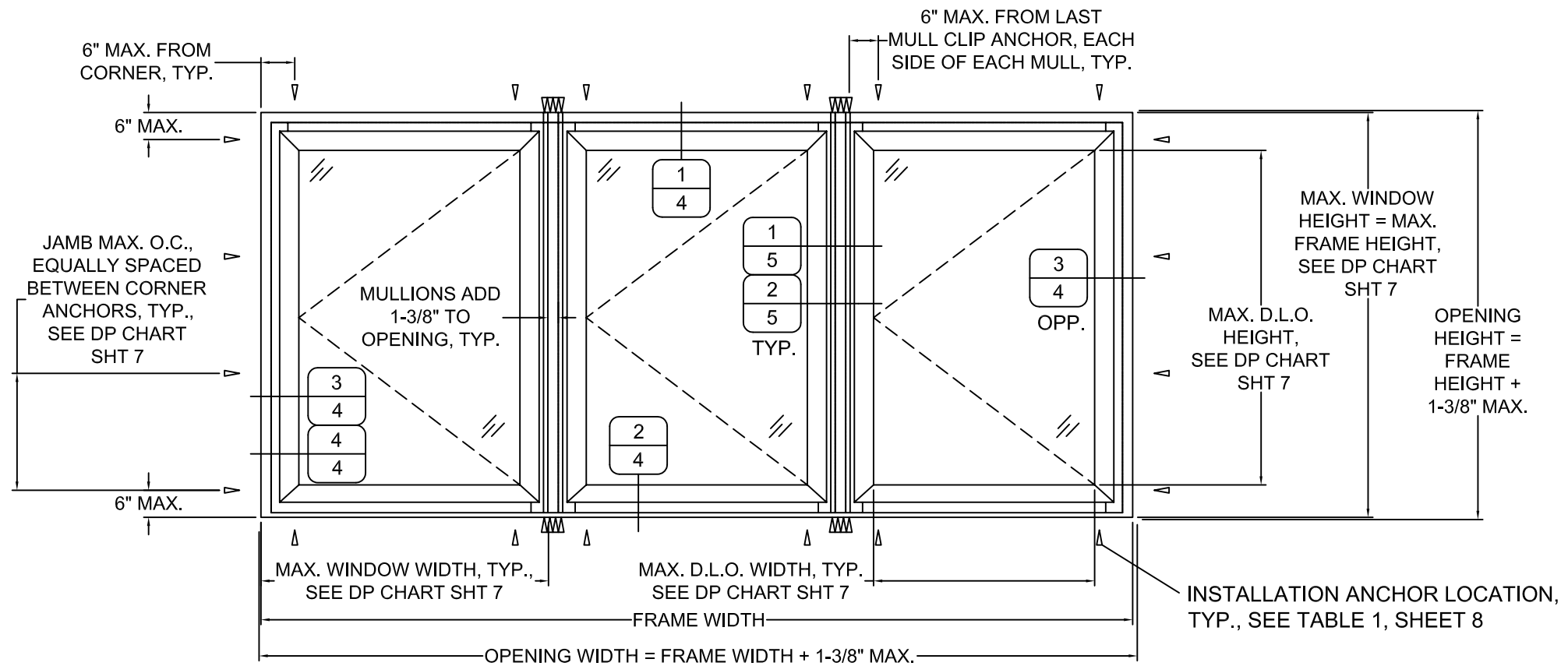
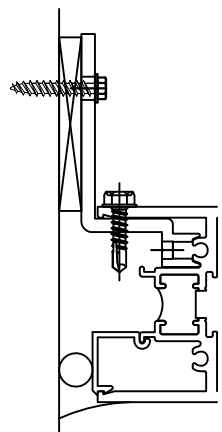
PROJECT-OUT CASEMENT WINDOWS
SAMPLE ELEVATIONS



SEE SHEET 7 FOR
DESIGN PRESSURES



SAMPLE ELEVATION, CASEMENT WINDOWS WITH RECEPTOR/SUBSILL ANCHORAGE



SAMPLE ELEVATION, CASEMENT WINDOWS WITH STRAP ANCHORAGE

REV. #	DATE
-	2/29/2024



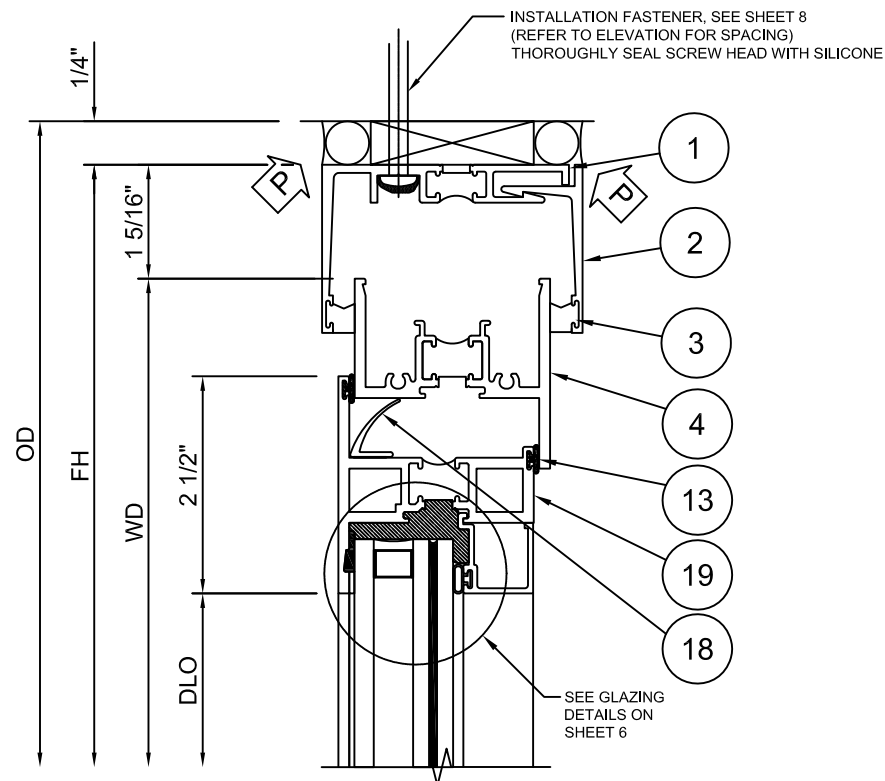
555 GUTHRIDGE COURT
NORCROSS, GEORGIA 30092
PH. 770-449-5555
WWW.KAWNEER.COM



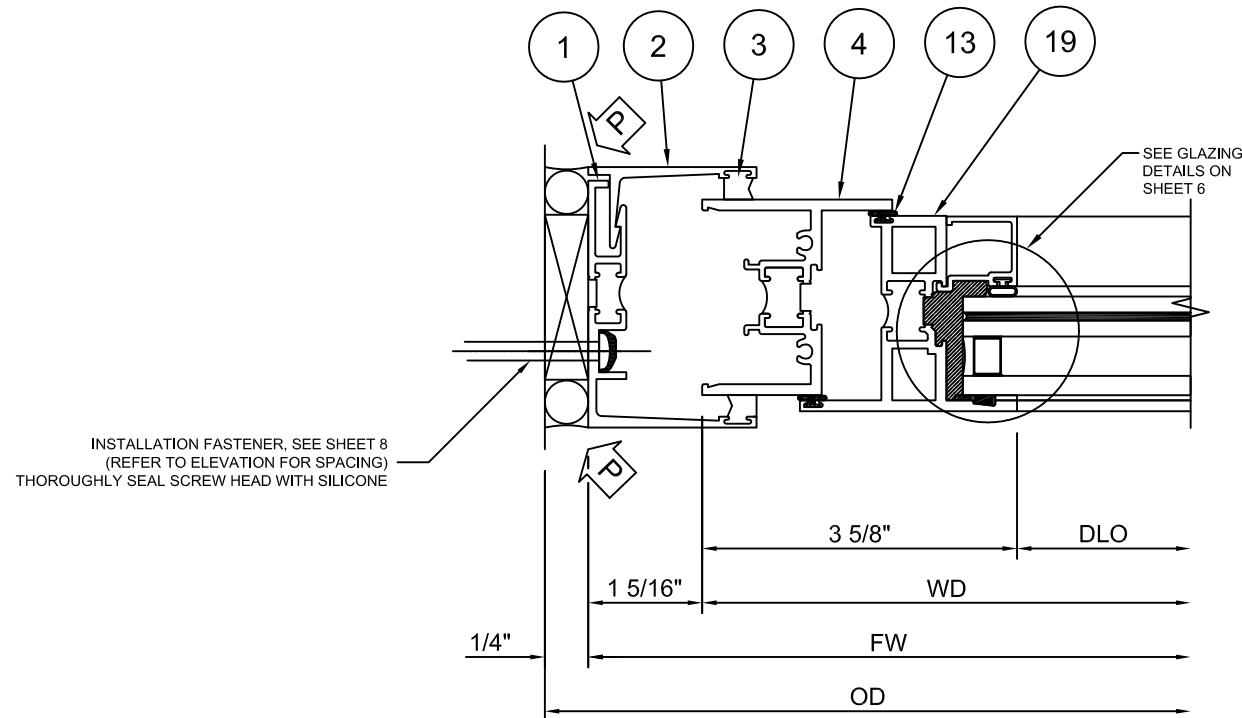
3/7/2024
LUCAS A. TURNER
FL P.E. #58201

TURNER ENGINEERING &
CONSULTING, INC.
2428 OLD NATCHEZ TRACE TRL.
CAMDEN, TN 38320
PH. 941-380-1574

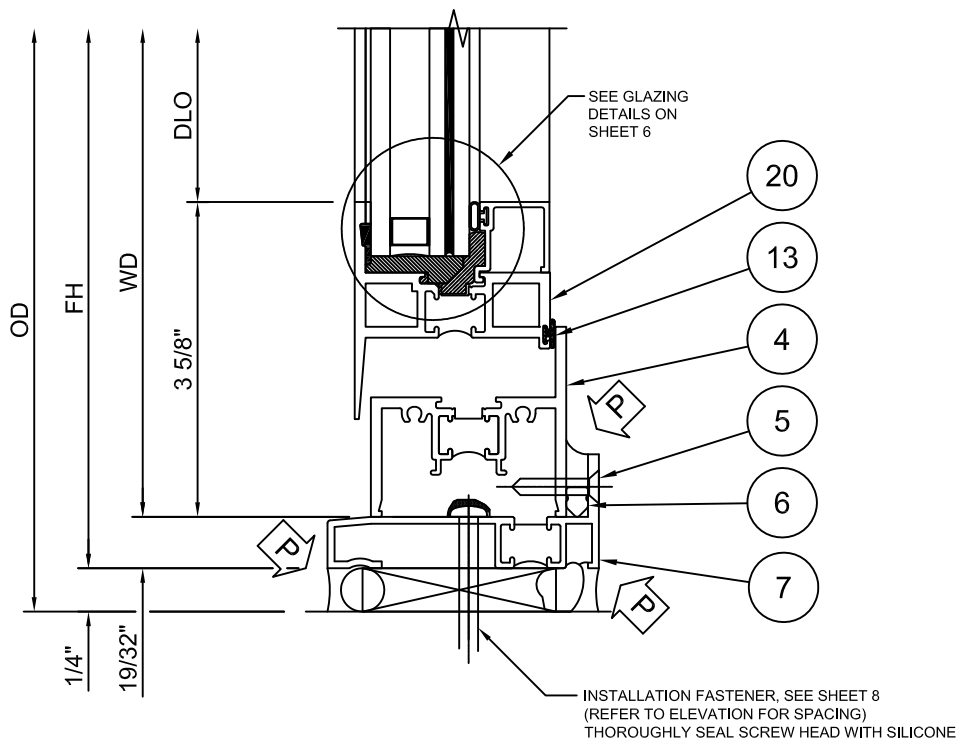
DRAWING NO. 8225TL-CA-FPA	PRODUCT 8225TL CA
FPA # FL46588	
DATE 2/29/2024	
SCALE NTS	SHEET 2 OF 9



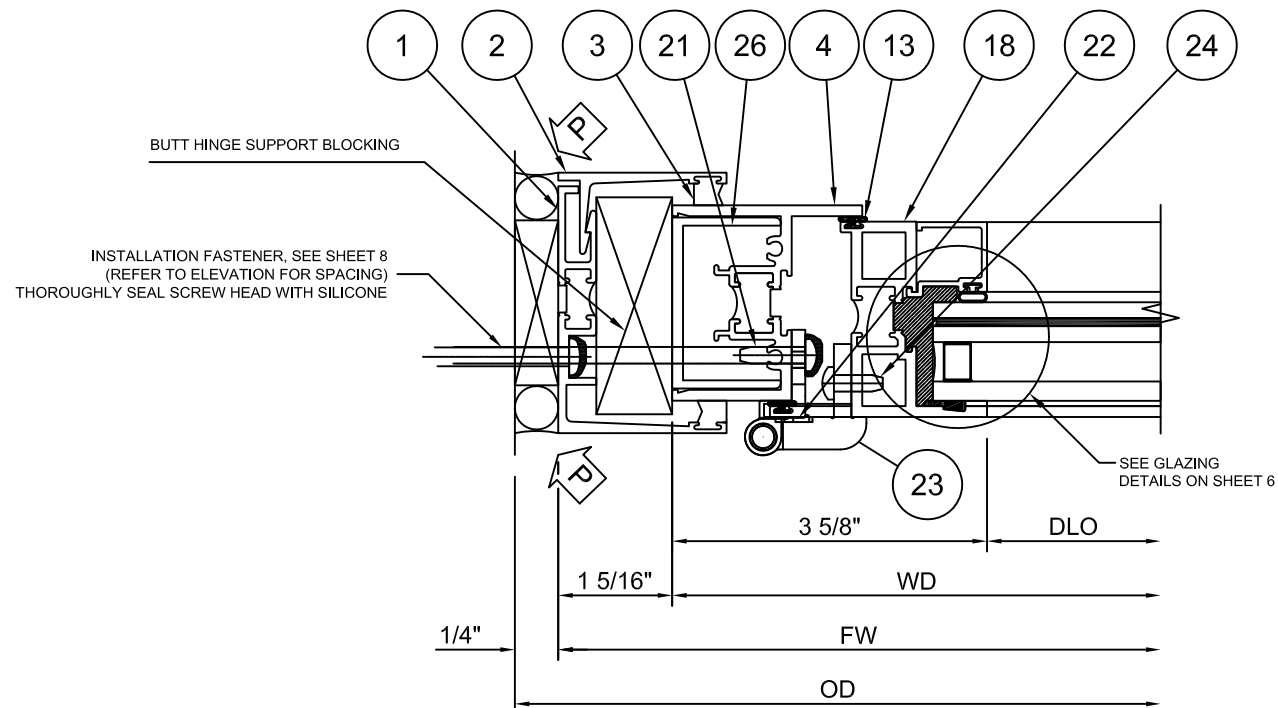
1
3



3
3



2
3



4 BUTT HINGE
3



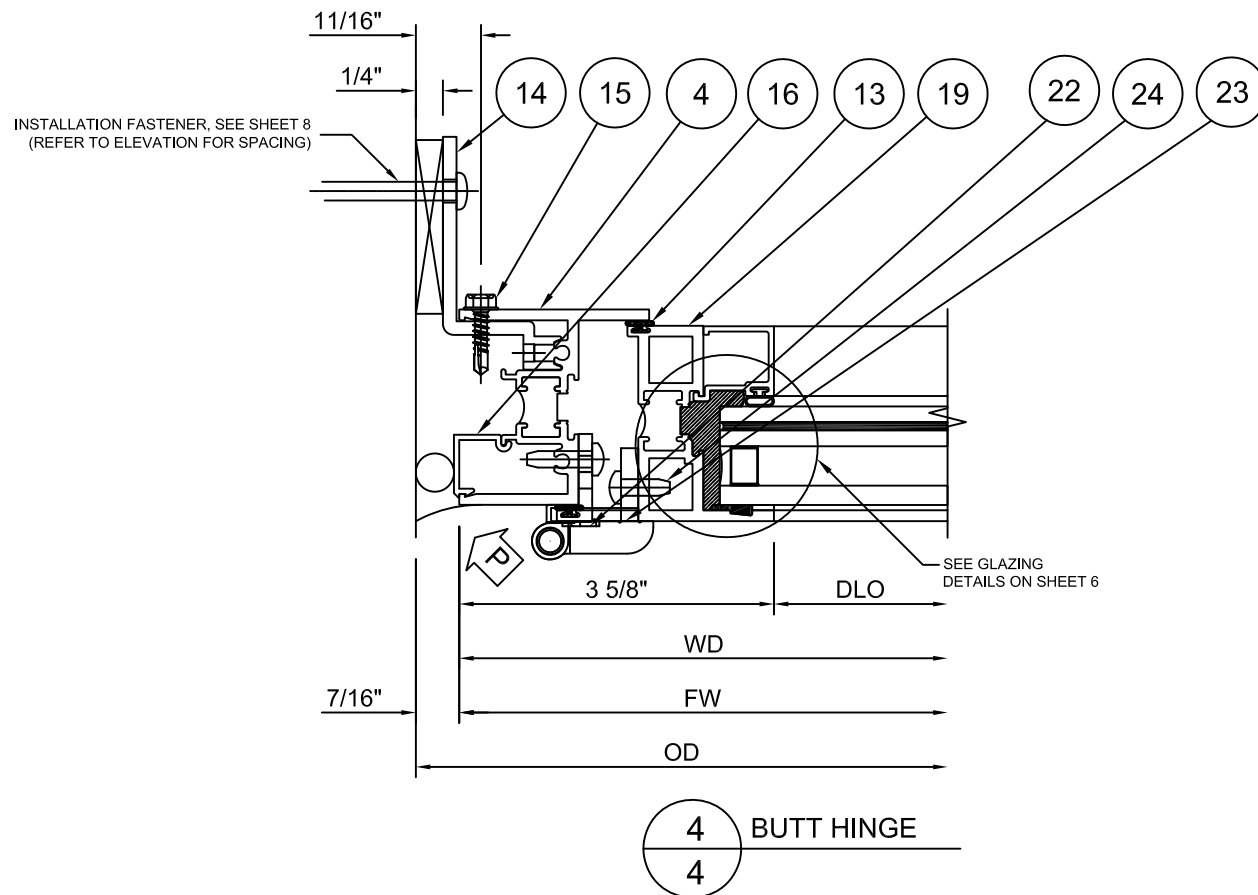
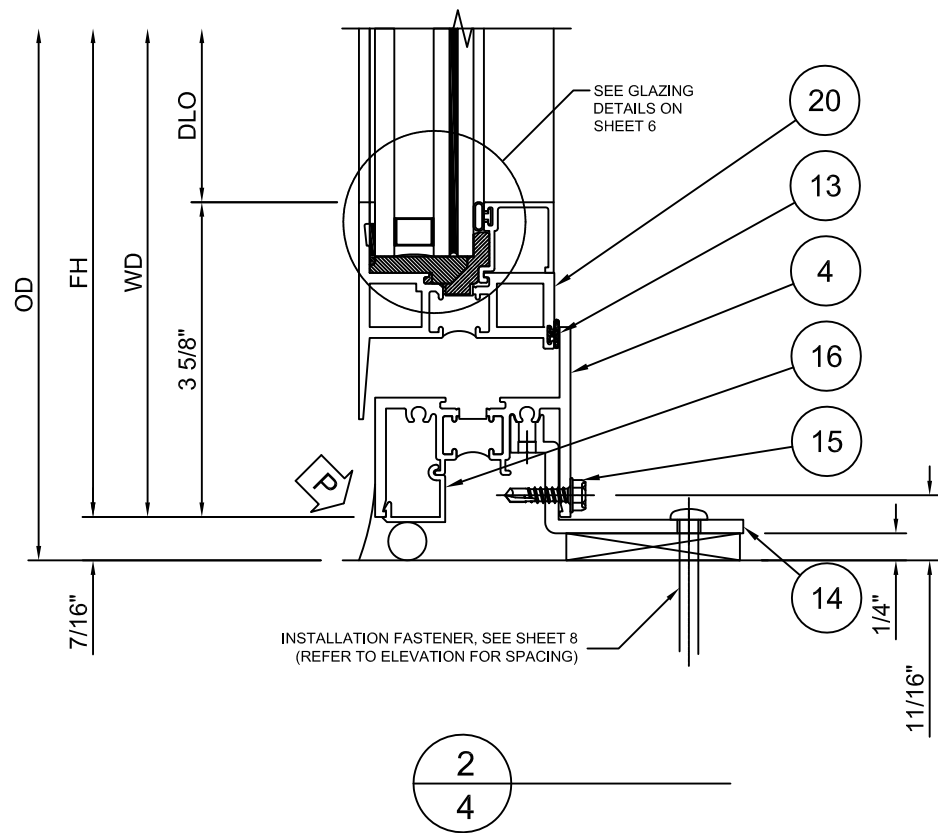
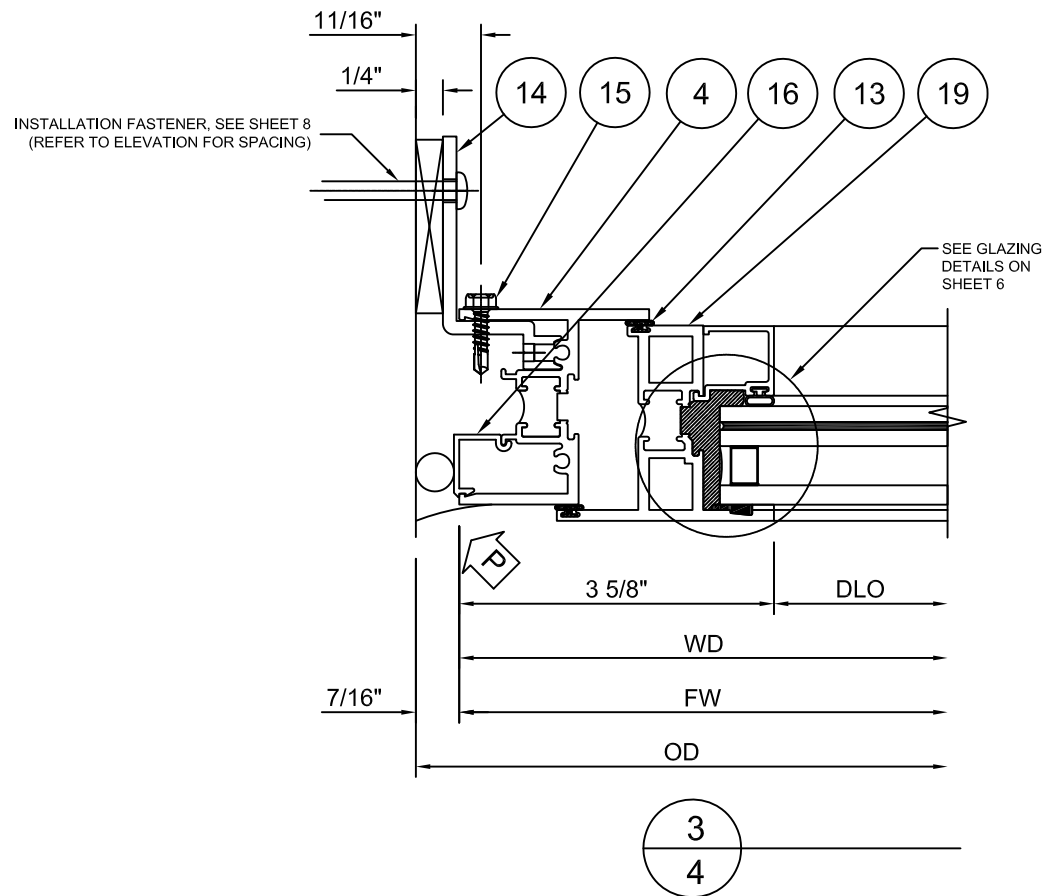
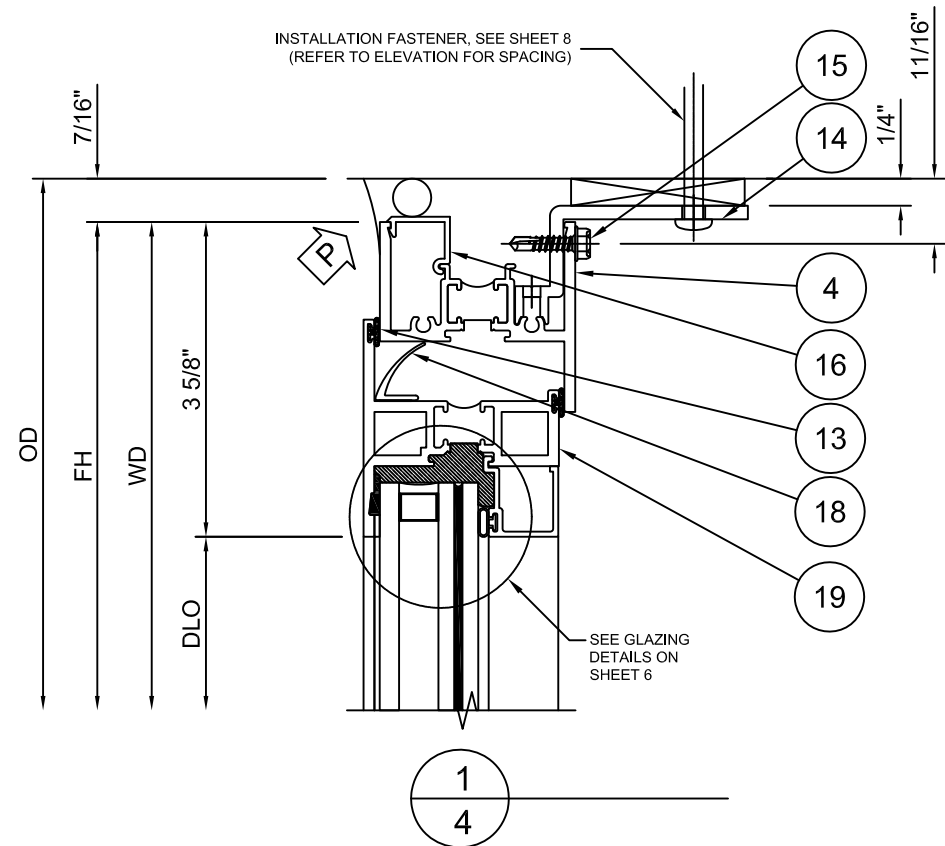
KAWNEER
555 GUTHRIDGE COURT
NORCROSS, GEORGIA 30092
PH. 770-449-5555
WWW.KAWNEER.COM



3/7/2024
LUCAS A. TURNER
FL P.E. #58201
TURNER ENGINEERING &
CONSULTING, INC.
2428 OLD NATCHEZ TRACE TRL.
CAMDEN, TN 38320
PH. 941-380-1574

DRAWING NO. 8225TL-CA-FPA	PRODUCT 8225TL CA
FPA # FL46588	
DATE 2/29/2024	
SCALE NTS	SHEET 3 OF 9

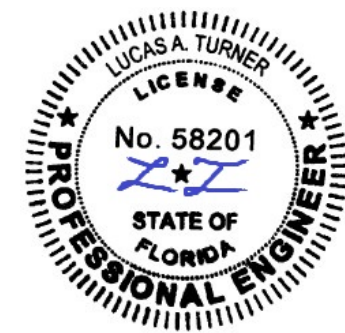
2/29/2024	DATE
-	REV. #
INITIAL RELEASE	PRINTS ISSUED FOR



P PERIMETER SEALS
(BY OTHERS)

KAWNEER

555 GUTHRIDGE COURT
NORCROSS, GEORGIA 30092
PH. 770-449-5555
WWW.KAWNEER.COM

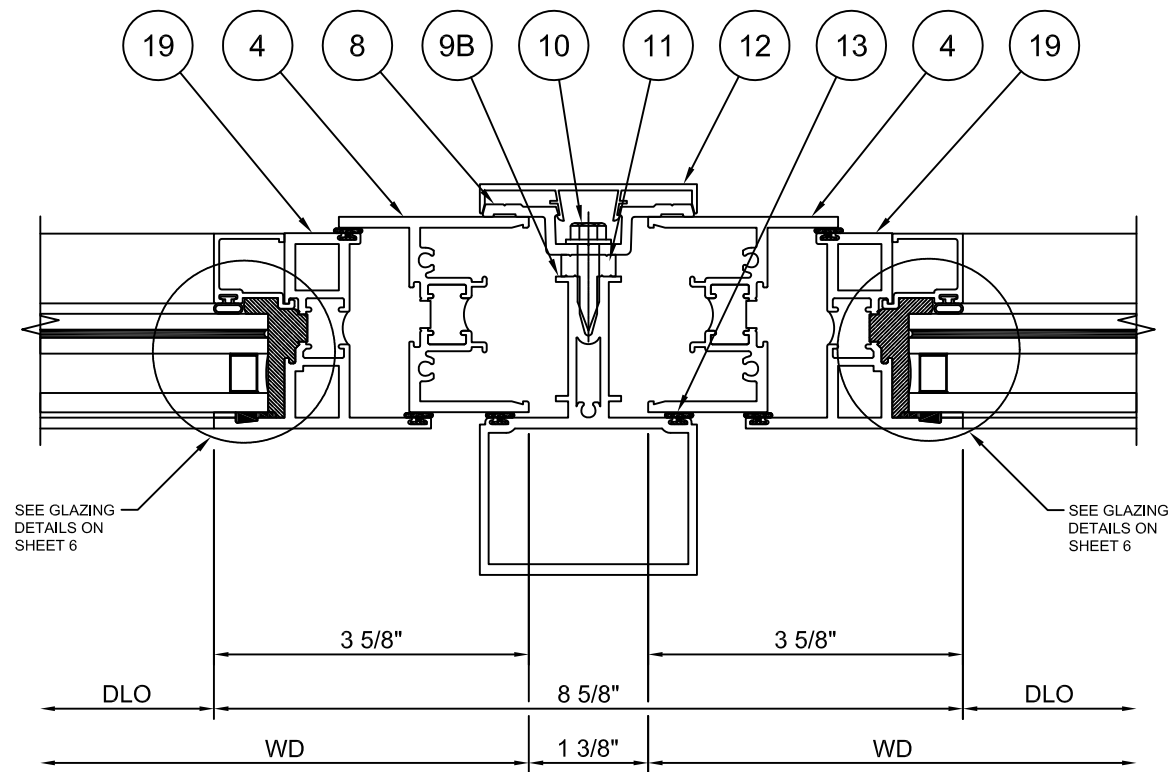


3/7/2024
LUCAS A. TURNER
FL P.E. #58201

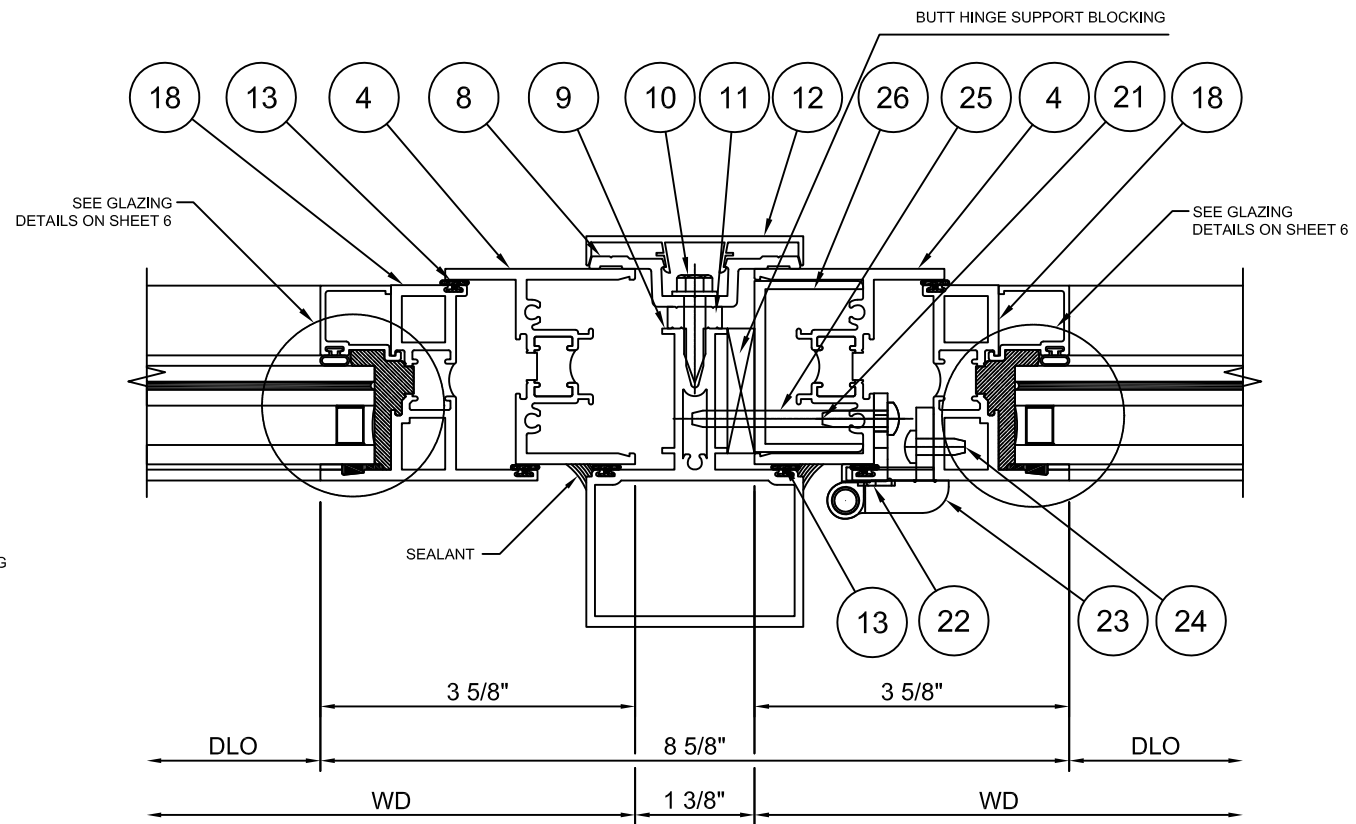
TURNER ENGINEERING &
CONSULTING, INC.
2428 OLD NATCHEZ TRACE TRL.
CAMDEN, TN 38320
PH. 941-380-1574

DRAWING NO. 8225TL-CA-FPA	PRODUCT 8225TL CA
FPA # FL46588	
DATE 2/29/2024	
SCALE NTS	SHEET 4 OF 9

2/29/2024	DATE
-	REV. #
INITIAL RELEASE	PRINTS ISSUED FOR



1
5



2 BUTT HINGE
5



555 GUTHRIDGE COURT
NORCROSS, GEORGIA 30092
PH. 770-449-5555
WWW.KAWNEER.COM



3/7/2024
LUCAS A. TURNER
FL P.E. #58201

TURNER ENGINEERING & CONSULTING, INC.
2428 OLD NATCHEZ TRACE TRL.
CAMDEN, TN 38320
PH. 941-380-1574

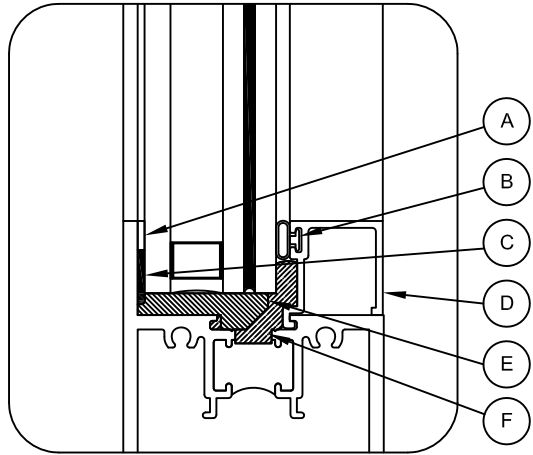
DRAWING NO. 8225TL-CA-FPA	PRODUCT 8225TL CA
FPA # FL46588	SHEET 5 OF 9
DATE 2/29/2024	
SCALE NTS	

INITIAL RELEASE	REV. #	DATE
	-	2/29/2024
PRINTS ISSUED FOR		

APPROVED GLAZING TYPES

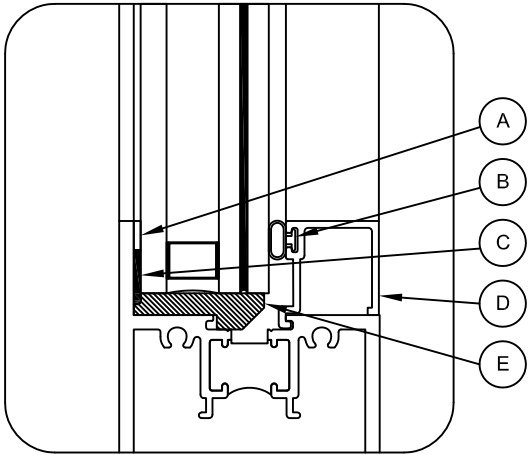
MISSILE RATING	TYPE	NOMINAL THICKNESS	DESCRIPTION	MISSILE RATING	TYPE	NOMINAL	DESCRIPTION
LARGE AND SMALL MISSILE	1	1-1/8" (1.125")	1/4" FT OUTBOARD, 7/16" AIR SPACER, 3/16" HS INBOARD, 0.090 KURARAY SG, 3/16" HS INBOARD - WET GLAZE	SMALL MISSILE ONLY	2	1-1/8" (1.125")	1/4" FT OUTBOARD, 7/16" AIR SPACER, 3/16" HS INBOARD, 0.060 KURARAY PVB, 3/16" HS INBOARD - DRY GLAZE
					3	1-1/8" (1.125")	1/4" FT OUTBOARD, 7/16" AIR SPACER, 3/16" HS INBOARD, 0.060 EASTMAN SAFLEX PVB, 3/16" HS INBOARD - DRY GLAZE

**GLAZING DETAIL:
LARGE AND SMALL
MISSILE IMPACT
GLASS TYPE 1**



- A 127186 GLAZING TAPE
- B 127074 BULB WEATHERING (SHORE "A" 65±5 DUROMETER TAPE)
- C BACK BEDDING SILICONE, SEE TABLE BELOW *
- D 224166 GLASS BEAD
- E 127106 SETTING BLOCK (SILL ONLY)
- F STRUCTURAL SILICONE, SEE TABLE BELOW **

**GLAZING DETAIL:
SMALL MISSILE IMPACT
GLASS TYPE 2 & 3**



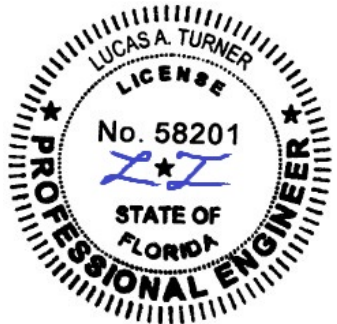
- A 127186 GLAZING TAPE
- B 127074 BULB WEATHERING (SHORE "A" 65±5 DUROMETER TAPE)
- C BACK BEDDING SILICONE, SEE TABLE BELOW *
- D 224166 GLASS BEAD
- E 127106 SETTING BLOCK (SILL ONLY)

GLAZING NOTES:
 1) INFILL SIZE FORMULA DLO + 1 1/4" UNLESS OTHERWISE NOTED.
 2) SETTING BLOCKS FBC 2411.3.3.1 COMPLIANT

APPROVED BACKBEDDING / STRUCTURAL SILICONE

DESIGNATION	GLASS TYPE	IMPACT RATING	* BACK BEDDING SILICONE ** STRUCTURAL SILICONE
BB1	1	LMI OR SMI	* RGS7700 RAPIDSTRENGTH W/ ** SCS2000 SILPRUF * DOWSIL 995 W/ ** DOWSIL 995 * TREMCO PROGLAZE SSG W/ ** TREMCO PROGLAZE SSG * SCS2000 SILPRUF W/ ** SCS2000 SILPRUF
BB5	2 3	SMI	* RGS7700 RAPIDSTRENGTH ** NONE REQ'D

KAWNEER
 555 GUTHRIDGE COURT
 NORCROSS, GEORGIA 30092
 PH. 770-449-5555
 WWW.KAWNEER.COM



3/7/2024
 LUCAS A. TURNER
 FL P.E. #58201
 TURNER ENGINEERING &
 CONSULTING, INC.
 2428 OLD NATCHEZ TRACE TRL.
 CAMDEN, TN 38320
 PH. 941-380-1574

DRAWING NO. 8225TL-CA-FPA	PRODUCT 8225TL CA
FPA # FL46588	SHEET 6 OF 9
DATE 2/29/2024	
SCALE NTS	

2/29/2024	DATE
-	REV. #
INITIAL RELEASE	PRINTS ISSUED FOR

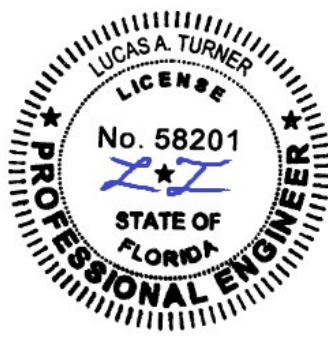
8225TL PROJECT-OUT CASEMENT WINDOWS DP CHART (ALLOWABLE DESIGN PRESSURES), STRAP ANCHORAGE									
APPROVED GLASS TYPE(S) (SEE SHT 6)	APPROVED BACKBEDDING/ STRUCTURAL SILICONE TYPE(S) (SEE SHT 6)	IMPACT RATING	HINGE HARDWARE	DIMENSIONS				DESIGN PRESSURE (+/- psf)	JAMB MAX. O.C. ANCHOR SPACING (in.)
				MAX. WINDOW WIDTH (in.)	MAX. WINDOW HEIGHT (in.)	MAX. D.L.O. WIDTH (in.)	MAX D.L.O. HEIGHT (in.)		
1	BB1	LARGE AND SMALL MISSILE	4-BAR	36	48	28-3/4	40-3/4	90	18-5/16
1	BB1	LARGE AND SMALL MISSILE	BUTT	38	62	30-3/4	54-3/4	90	16-11/16
2 OR 3	BB5	SMALL MISSILE	4-BAR OR BUTT	38	62	30-3/4	54-3/4	90	16-11/16

8225TL PROJECT-OUT CASEMENT WINDOWS DP CHART (ALLOWABLE DESIGN PRESSURES), RECEPTOR/SUBSILL ANCHORAGE									
APPROVED GLASS TYPE(S) (SEE SHT 6)	APPROVED BACKBEDDING/ STRUCTURAL SILICONE TYPE(S) (SEE SHT 6)	IMPACT RATING	HINGE HARDWARE	DIMENSIONS				DESIGN PRESSURE (+/- psf)	JAMB MAX. O.C. ANCHOR SPACING (in.)
				MAX. WINDOW WIDTH (in.)	MAX. WINDOW HEIGHT (in.)	MAX. D.L.O. WIDTH (in.)	MAX D.L.O. HEIGHT (in.)		
1	BB1	LARGE AND SMALL MISSILE	4-BAR	36	48	28-3/4	40-3/4	90	18-15/16
1	BB1	LARGE AND SMALL MISSILE	BUTT	38	62	30-3/4	54-3/4	90	17-5/16
2 OR 3	BB5	SMALL MISSILE	4-BAR OR BUTT	38	62	30-3/4	54-3/4	90	17-5/16

HARDWARE / ACCESSORIES		
PART NUMBER	PART DESCRIPTION	QUANTITY PER VENT
225405	PROJ-OUT CAM HANDLE LH	02
225411	PROJECT-OUT LSTRIKE	02
229107	11/16" STACK 12" 4-BAR HINGE	02
229136	CASEMENT WIND BUTT HINGE	03
229154	SNUBBER DRIVER	01
229155	SNUBBER RECEIVER	01
225421	RISER BLOCK	01
290409	RISER BLOCK	01
229225	6.5" KEY RELEASE LIMIT DEVICE	01



555 GUTHRIDGE COURT
NORCROSS, GEORGIA 30092
PH. 770-449-5555
WWW.KAWNEER.COM



3/7/2024
LUCAS A. TURNER
FL P.E. #58201

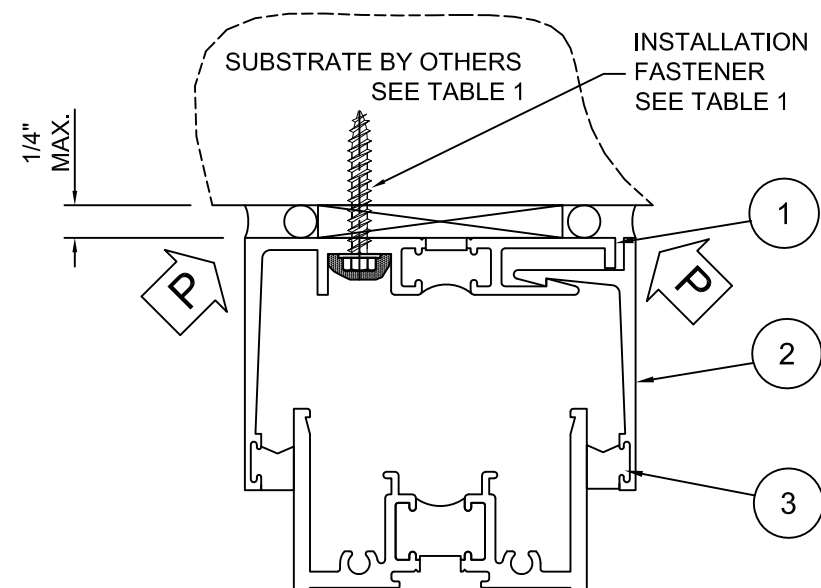
TURNER ENGINEERING &
CONSULTING, INC.
2428 OLD NATCHEZ TRACE TRL.
CAMDEN, TN 38320
PH. 941-380-1574

DRAWING NO. 8225TL-CA-FPA	PRODUCT 8225TL CA
FPA # FL46588	SHEET 7 OF 9
DATE 2/29/2024	
SCALE NTS	

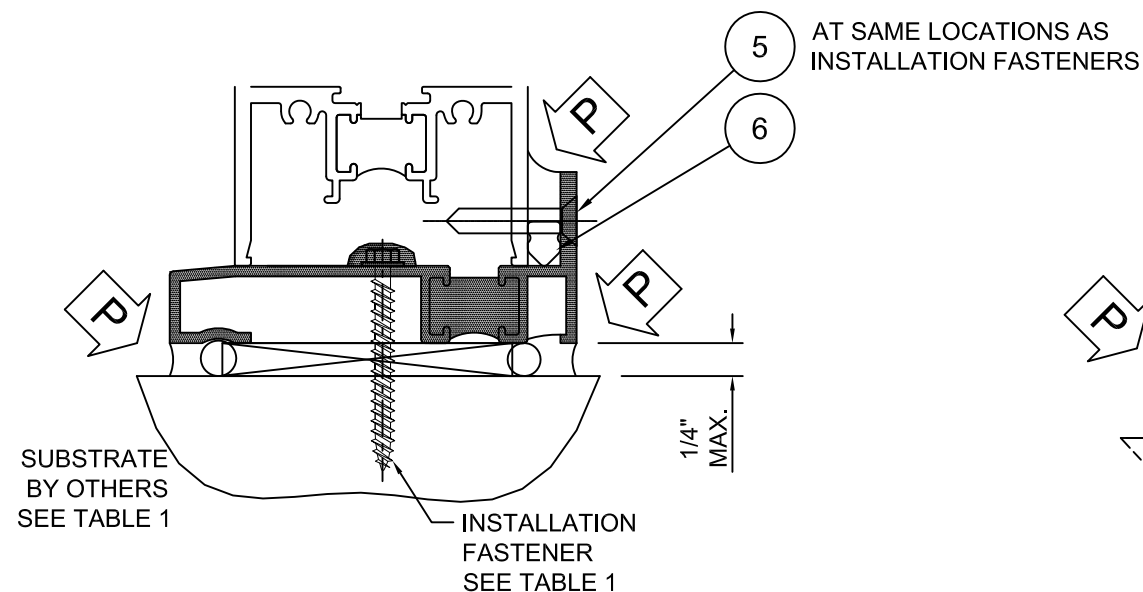
INITIAL RELEASE
PRINTS ISSUED FOR

TABLE 1. QUALIFIED ANCHOR INFORMATION

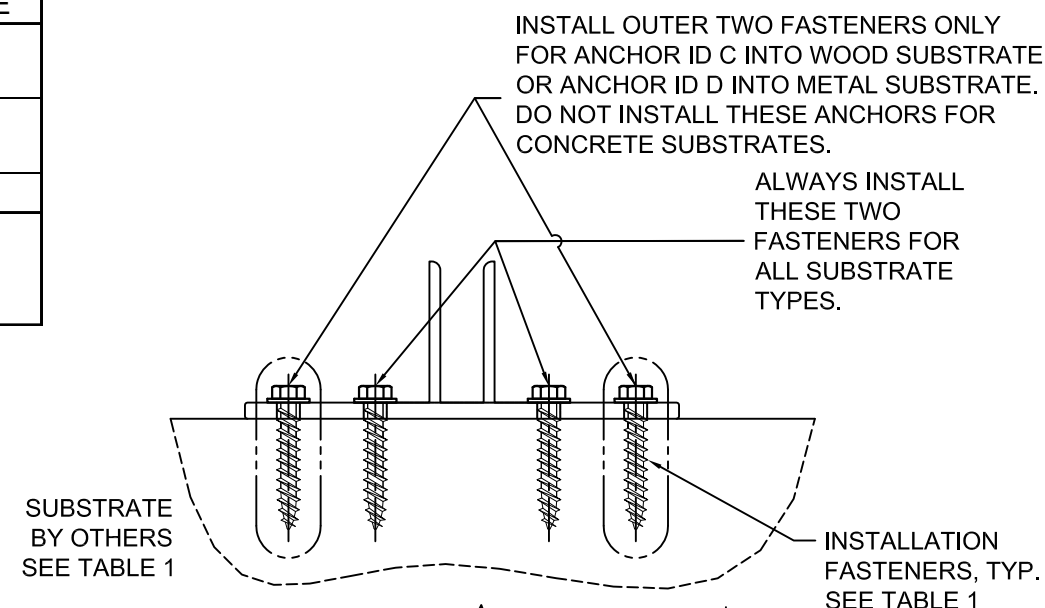
ID	SUBSTRATE	ANCHOR	MIN. EMBEDMENT	MIN. EDGE DISTANCE
A	SOLID UNCRACKED CONCRETE (3050 PSI MIN.)	1/4" DEWALT COATED CARBON STEEL ULTRACON+	1 3/4"	2 1/2"
B	UNCRACKED CMU (ASTM C-90) (JAMBS ONLY)	1/4" DEWALT COATED CARBON STEEL ULTRACON+	1 1/4"	2 1/2"
C	2x MIN. SOUTHERN PINE WOOD (G=0.55 MIN)	#12 GRADE 5 WOOD SCREW	2"	1"
D	16 GAUGE (0.060") MIN. STEEL STUD (33 KSI YIELD MIN.) OR 1/8" MIN. ALUMINUM (6063-T5 MIN.) OR 1/8" MIN. A36 STEEL	#1/4-14 ITW TEKS SELF-DRILLING SCREW	FULL + 3 THREADS	1/2"



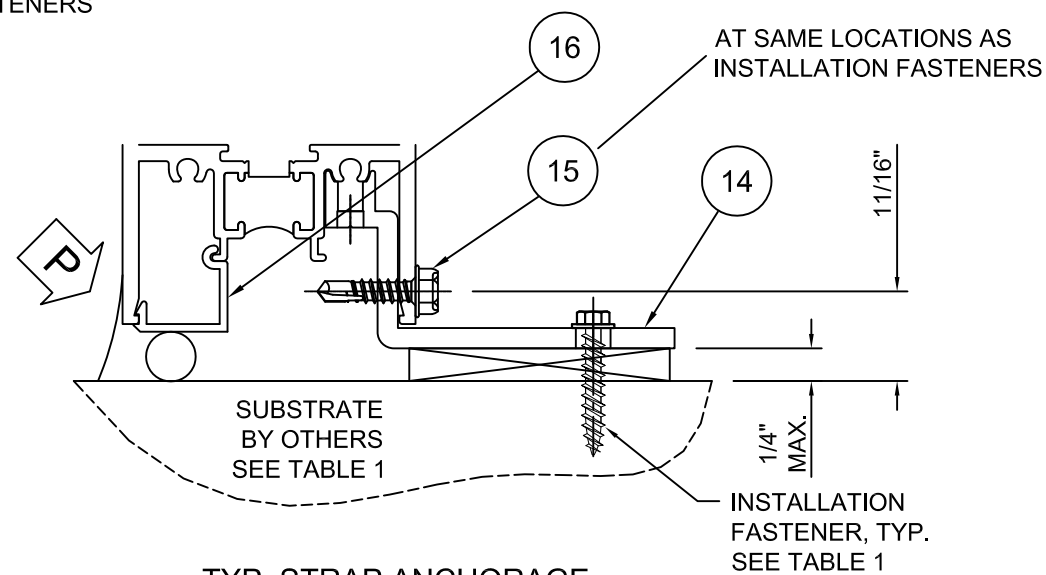
TYP. RECEPTOR ANCHORAGE HEAD/JAMB



TYP. SUBSILL ANCHORAGE



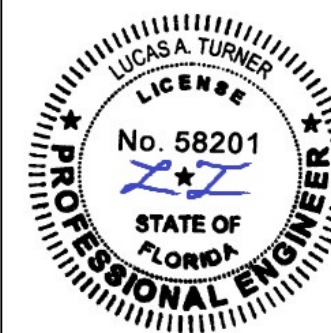
TYP. MULLION CLIP ANCHORAGE HEAD/SILL, EACH MULL



TYP. STRAP ANCHORAGE HEAD/SILL/JAMB

PERIMETER SEALS (BY OTHERS)

KAWNEER
 555 GUTHRIDGE COURT
 NORCROSS, GEORGIA 30092
 PH. 770-449-5555
 WWW.KAWNEER.COM



3/7/2024
 LUCAS A. TURNER
 FL P.E. #58201

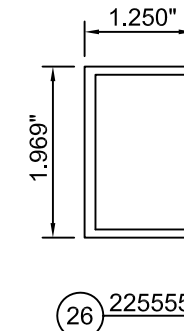
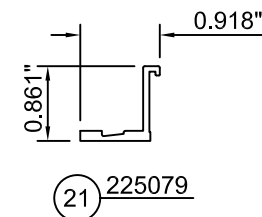
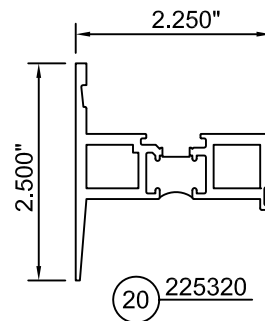
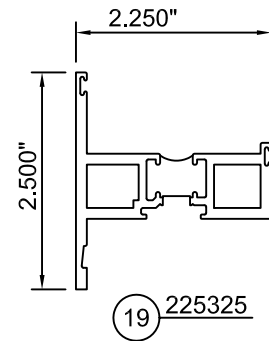
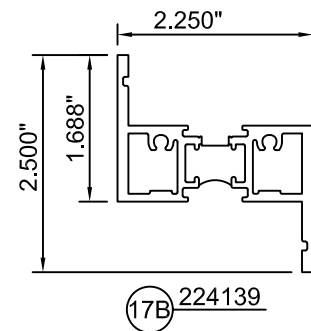
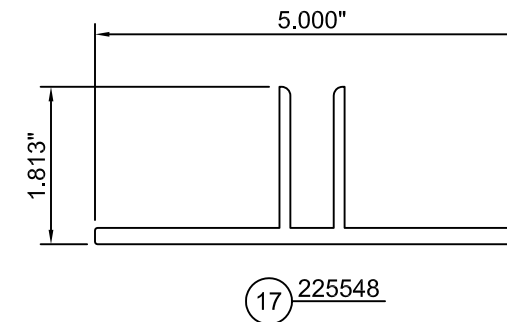
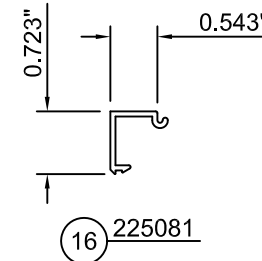
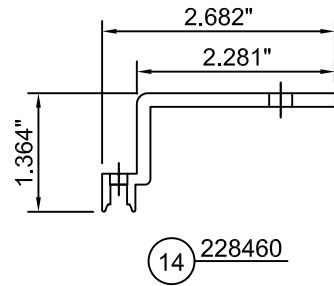
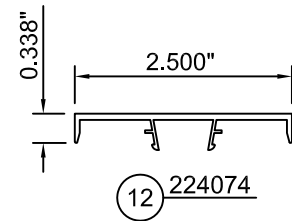
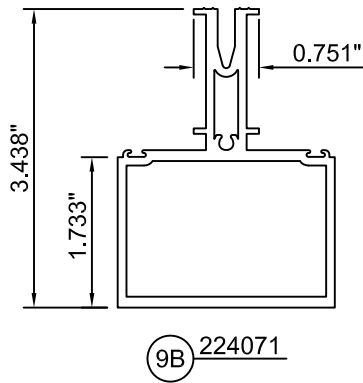
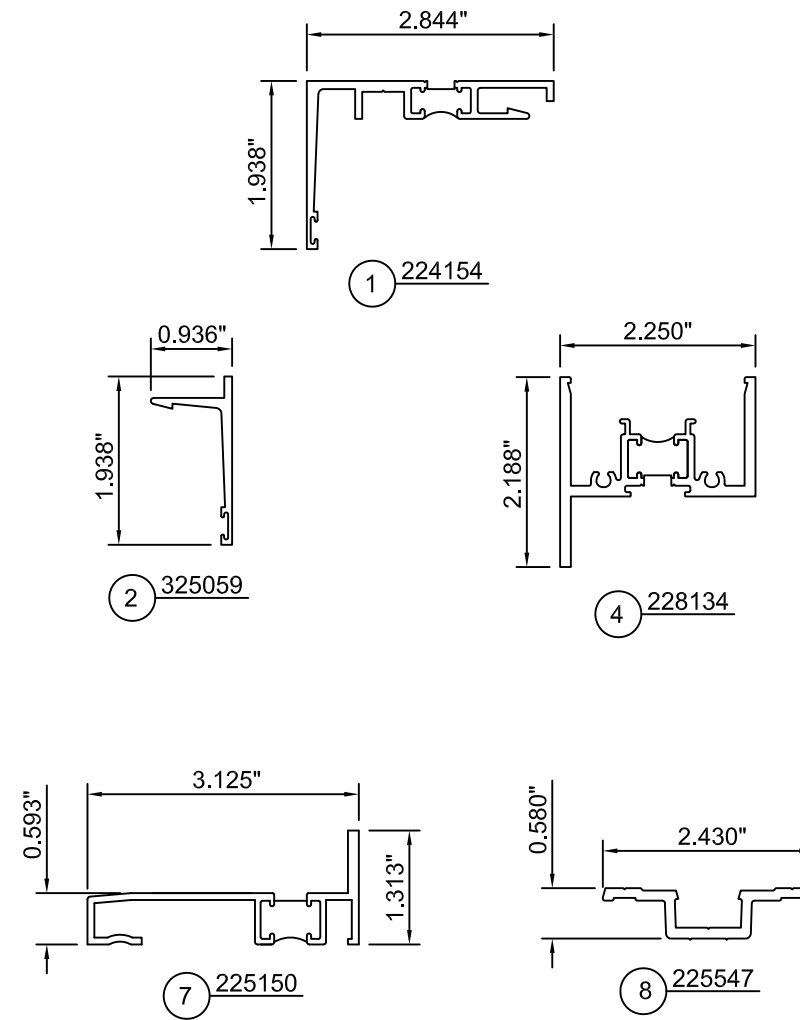
TURNER ENGINEERING & CONSULTING, INC.
 2428 OLD NATCHEZ TRACE TRL.
 CAMDEN, TN 38320
 PH. 941-380-1574

DRAWING NO. 8225TL-CA-FPA	PRODUCT 8225TL CA
FPA # FL46588	
DATE 2/29/2024	
SCALE NTS	SHEET 8 OF 9

2/29/2024	DATE
-	REV. #
INITIAL RELEASE	PRINTS ISSUED FOR

8225TL - THERMAL WINDOWS MATERIAL PARTS LIST

NO.	PART NO.	DESCRIPTION	DIMENSIONS	MATERIAL
EXTRUSIONS & MISC. PARTS				
1	224154	TWO PIECE RECEPTOR	1.938 x 2.844 x 0.080	6063-T6 ALUMINUM
2	325059	TWO PIECE RECEPTOR STOP	1.938 x 0.936 x 0.090	6063-T6 ALUMINUM
3	027883	RECEPTOR WEATHERING	0.349 x 3.849 x 0.040	SANTOPRENE / POLYPROPYLENE
4	228134	REVERSIBLE FRAME FOR 0.125" WALL	2.188 x 2.250 x 0.125	6063-T6 ALUMINUM
5	028520	FASTENER	10 x 1 CRFCHTFS AB	300 SERIES STAINLESS STEEL
6	127038	1/4" BACK UP WEDGE	0.250 x 0.340	BLACK SCR-900
7	225150	FULL DEPTH SUB SILL	1.313 x 3.125 x 0.080	6063-T6 ALUMINUM
8	225547	STRUCTURAL MULLION PRESS PLATE	2.430 x 0.581 x 0.125	6063-T6 ALUMINUM
9B	224071	STRUCTURAL MULLION 1-13/16" PROJECTION	2.500 x 3.453 x 0.100	6063-T6 ALUMINUM
10	128406	FASTENER	1/4 x 1 HWHTFS AB	18-8 STAINLESS STEEL
11	162310	THERMAL BREAK	0.626 x 5.850	BLACK EPDM, PEROXIDE
12	224074	STRUCTURAL MULLION COVER	2.500 x 3.338 x 0.072	6063-T6 ALUMINUM
13	027874	WEATHERING	0.187 x 0.200	VYRAM OR EQ. / POLYPROPYLENE OR EQ. / SANTOPRENE OR EQ.
14	228460	STRAP ANCHOR	2.682 x 1.365 x 0.156	6063-T6 ALUMINUM
15	128961	FASTENER	10-16 x 3/4 HWHSMD	400 SERIES STAINLESS STEEL
16	225081	EXTERIOR SEALANT BACKUP	0.705 x 0.663 x 0.060	6063-T6 ALUMINUM
17	225548	HEAVYWEIGHT MULL AHR CLIP	5 x 1.250 x 1.813	6063-T6 ALUMINUM
17B	224139	ZEE INTERMEDIATE	1.688 x 2.250 x 0.125	6063-T6 ALUMINUM
18	127265	WATER DEFLECTION GASKET	0.495 x 0.760	SANTOPRENE 8201-80 / 10 MIL TRANSFER TAPE
19	225325	1/8" WALL PROJECT OUT VENT SILL	2.500 x 2.250 x 0.125	6063-T6 ALUMINUM
20	225320	1/8" WALL PROJECT OUT VENT SILL	2.500 x 2.250 x 0.125	6063-T6 ALUMINUM
21	225079	REVERSE PROJECTION ADAPTOR	0.861 x 0.808 x 0.070	6063-T6 ALUMINUM
22	229137	PAD FOR 229136 HINGE	2.010 x 0.3 x 0.125	EPDM
23	229136	CSMT WIND BUTT HINGE	3.250 x 1.398	6061-T6 ALUMINUM
24	128414	FASTENER	10 x 7/16 PHTF B	STAINLESS STEEL AUSTENITIC
25	028985	FASTENER	10 x 2 1/4 TYPE I CRPHTFS B	430 SERIES STAINLESS STEEL
26	225555	BUTT HINGE SPRT CSMT	3 x 2.019 x 0.125	6063-T6 ALUMINUM



555 GUTHRIDGE COURT
NORCROSS, GEORGIA 30092
PH. 770-449-5555
WWW.KAWNEER.COM



3/7/2024
LUCAS A. TURNER
FL P.E. #58201

TURNER ENGINEERING & CONSULTING, INC.
2428 OLD NATCHEZ TRACE TRL.
CAMDEN, TN 38320
PH. 941-380-1574

DRAWING NO. 8225TL-CA-FPA	PRODUCT 8225TL CA
FPA # FL46588	
DATE 2/29/2024	
SCALE NTS	SHEET 9 OF 9

2/29/2024	DATE
-	REV. #
INITIAL RELEASE	PRINTS ISSUED FOR