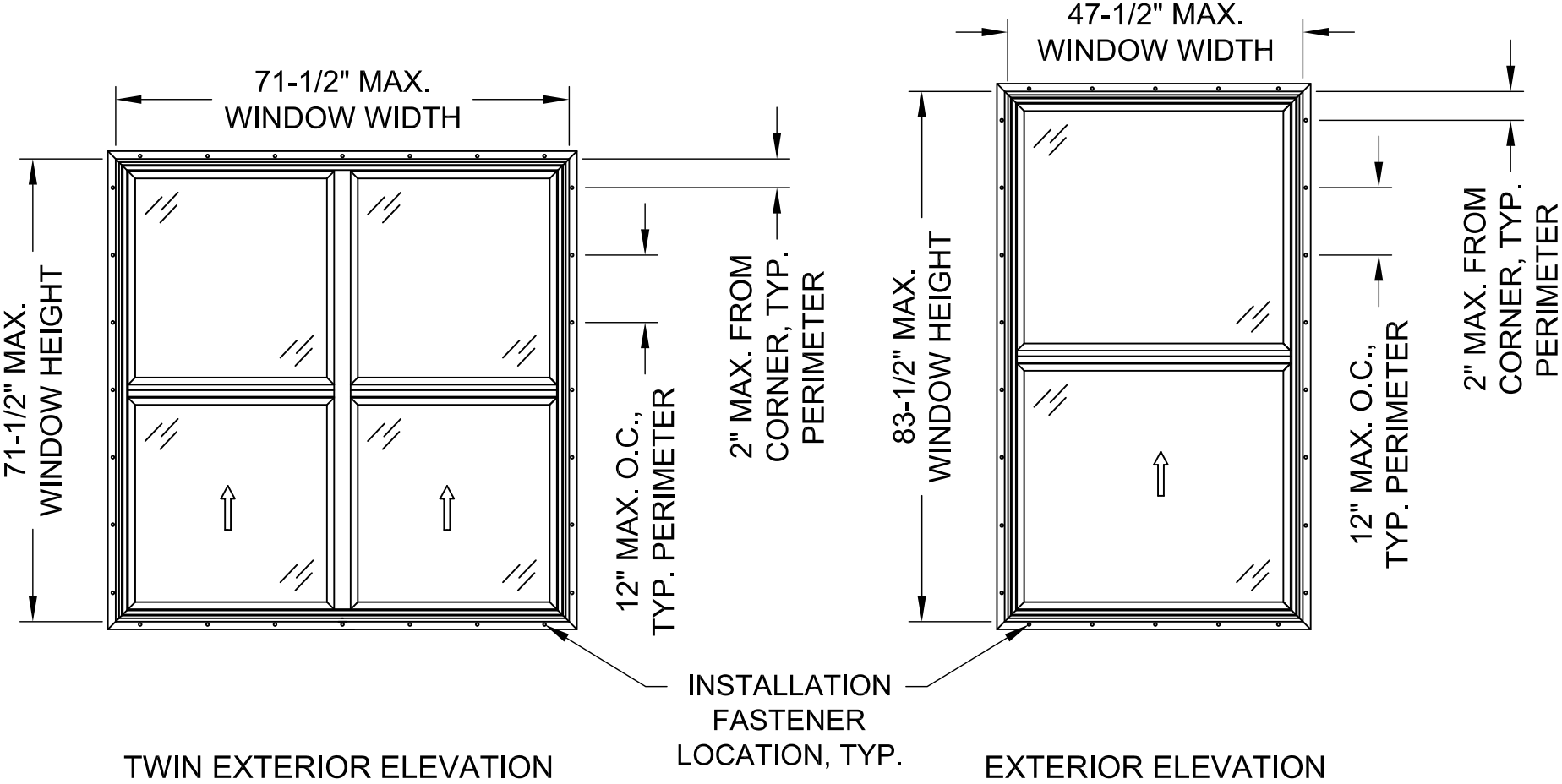


GENERAL NOTES

1. THE PRODUCT SHOWN HEREIN IS DESIGNED AND MANUFACTURED TO COMPLY WITH THE REQUIREMENTS OF THE 8TH EDITION (2023) FLORIDA BUILDING CODE, 2018 INTERNATIONAL RESIDENTIAL CODE, AND 2018 INTERNATIONAL BUILDING CODE.
2. THIS DOCUMENT ADDRESSES ONLY PRODUCT ANCHORAGE TO ACHIEVE THE INDICATED DESIGN PRESSURES AT THE INDICATED SIZES, IN THE CONFIGURATION SHOWN IN THE ELEVATIONS. INSTALL PRODUCTS WITH MAXIMUM SHIM GAP, MINIMUM EDGE DISTANCE AND EMBEDMENT, AND WITH FASTENER TYPE AS SHOWN IN THE DETAILS ON SHEET 2. FOR FULL PRODUCT CONSTRUCTION DETAILS SEE TEST REPORTS CCL 24-153 AND 24-237.
3. THIS PRODUCT AS SHOWN IN THIS DRAWING IS NON-IMPACT RESISTANT AND REQUIRES THE USE OF IMPACT PROTECTIVE DEVICES (SHUTTERS) IN WINDBORNE DEBRIS REGIONS.
4. GLAZING SHALL BE COMPLIANT WITH ASTM E-1300.
5. THE 4/3 ALLOWABLE STRESS INCREASE FACTOR (SHORT-TERM INCREASE FACTOR) HAS NOT BEEN USED IN THE ANCHOR ANALYSIS FOR THIS SYSTEM. THE 1.6 Cd FACTOR WAS USED IN THE ANALYSIS OF ANCHORAGE INTO WOOD SUBSTRATE.
6. THE OPENING SUBSTRATE MATERIALS (FRAMING, MASONRY, BUCKS) AND ATTACHMENT OF BUCKS TO THE SUBSTRATE ARE BY OTHERS AND SHALL BE VERIFIED BY THE ARCHITECT OR ENGINEER OF RECORD OR AS APPROVED BY THE AUTHORITY HAVING JURISDICTION (AHJ). BUCKING, OPENINGS, & BUCKING FASTENERS MUST BE PROPERLY DESIGNED & INSTALLED BY OTHERS IN ACCORDANCE WITH THE FBC TO TRANSFER SUPERIMPOSED LOADS TO THE STRUCTURE. WITH MASONRY OPENINGS, WOOD BUCKS ARE OPTIONAL.
7. DISSIMILAR MATERIALS THAT COME INTO CONTACT SHALL BE COATED OR OTHERWISE PROTECTED TO PREVENT GALVANIC REACTIONS. WOOD BUCKS, IF USED, SHALL BE PRESSURE TREATED, WITH EITHER A TREATMENT OR COATING COMPATIBLE WITH THIS PRODUCT.
8. ANCHORAGE NOTES: ALL ANCHORS USED SHALL BE OF A MATERIAL OR HAVE A COATING COMPATIBLE WITH ANY PRESSURE TREATMENT OF WOOD AND ALL OTHER WINDOW MATERIALS. INSTALL ONE ANCHOR AT EACH LOCATION SHOWN IN THE ELEVATION. INSTALL SHIMS AS NEEDED BUT NOT LESS THAN 1/4 POINTS OF FRAMING. SHIMS SHALL BE LOAD-BEARING (PLASTIC OR METALLIC) AND CAPABLE OF TRANSFERRING LOADS TO SUBSTRATE, AND FIXED IN PLACE WITH CONSTRUCTION GRADE ADHESIVE SEALANT. SPECIFIED ANCHOR EMBEDMENT TO SUBSTRATE SHALL BE BEYOND WALL FINISH.
9. ALL HARDWARE & FASTENERS SHALL BE IN ACCORDANCE WITH THESE DRAWINGS, OR AS APPROVED, SIGNED, AND SEALED BY A FLORIDA-REGISTERED PROFESSIONAL ENGINEER ON A SITE-SPECIFIC BASIS.
10. SEALING AND FLASHING STRATEGIES FOR OVERALL WATER INFILTRATION RESISTANCE OF THE INSTALLED PRODUCT SHALL BE THE RESPONSIBILITY OF OTHERS AND ARE NOT ADDRESSED BY THIS DOCUMENT.

500 SERIES PVC SINGLE HUNG WINDOW



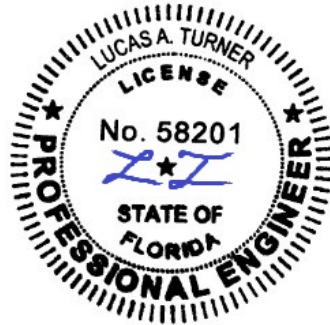
DESIGN PRESSURE RATING
+/-50 PSF



ABI WINDOWS, LLC

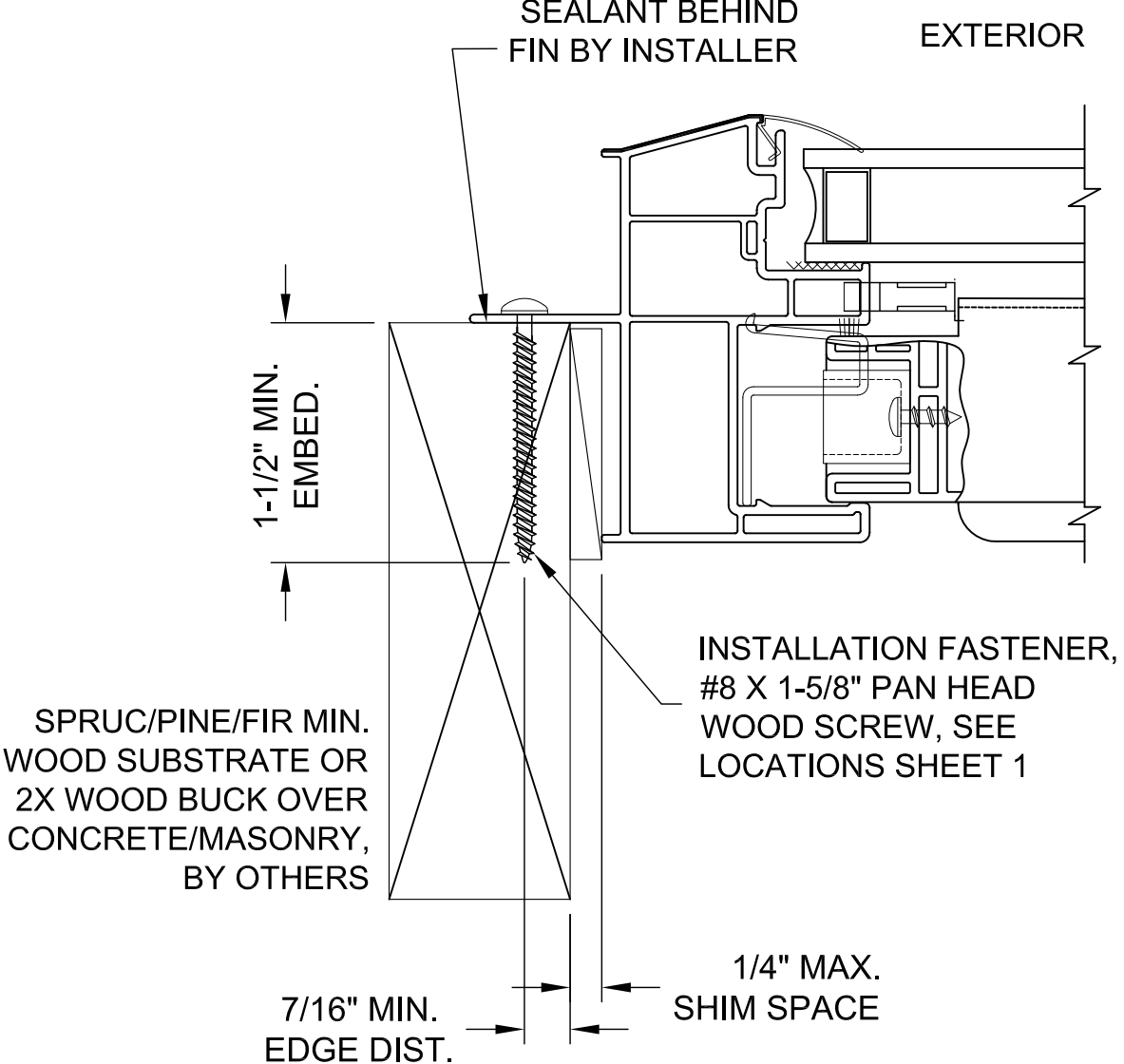
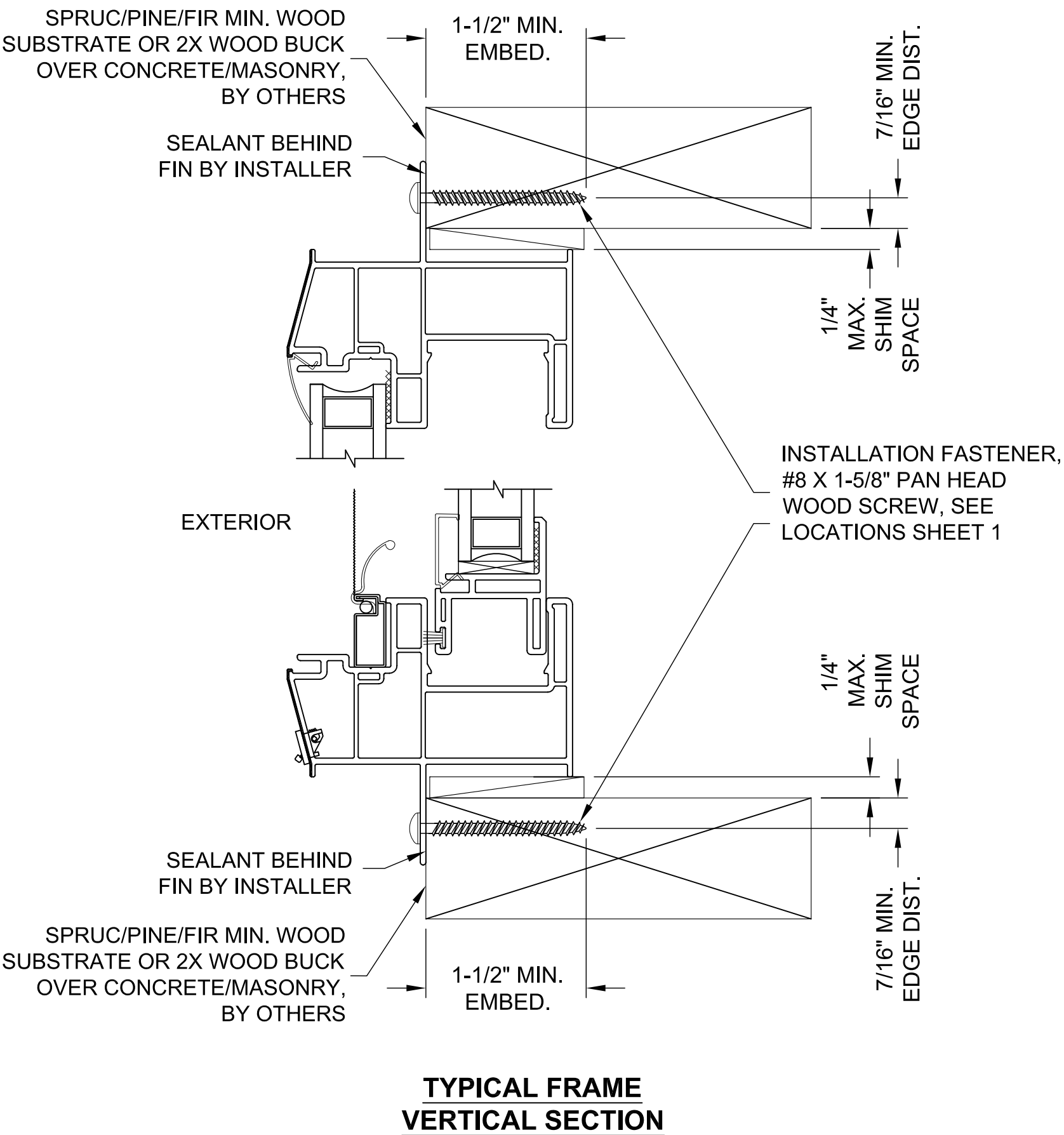
1121 Fulwiler Rd., Abilene, TX 79603  
Ph. (325) 352-4601 www.abiwindows.com


SHEET DESCRIPTION: NOTES, ELEVATIONS	DATE DRAWN: 2/7/2025
SCALE: NTS	REV: 0
DRAWING: FPA-500-SH	SHEET: 1 OF 2



2/10/2025  
Lucas A. Turner, P.E.  
FL PE #58201  
2428 Old Natchez Trc Trl  
Camden, TN 38320  
Ph. 941-380-1574

500 SERIES PVC SINGLE HUNG WINDOW






**ABI WINDOWS, LLC**

1121 Fulwiler Rd., Abilene, TX 79603  
Ph. (325) 352-4601 [www.abiwindows.com](http://www.abiwindows.com)

SHEET DESCRIPTION: INSTALLATION	DATE DRAWN: 2/7/2025
SCALE: NTS	REV: 0
DRAWING: FPA-500-SH	SHEET: 2 OF 2



2/10/2025  
Lucas A. Turner, P.E.  
FL PE #58201  
2428 Old Natchez Trc Trl  
Camden, TN 38320  
Ph. 941-380-1574