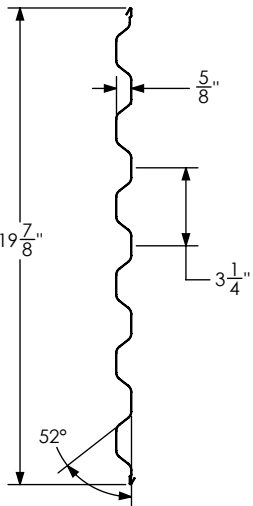
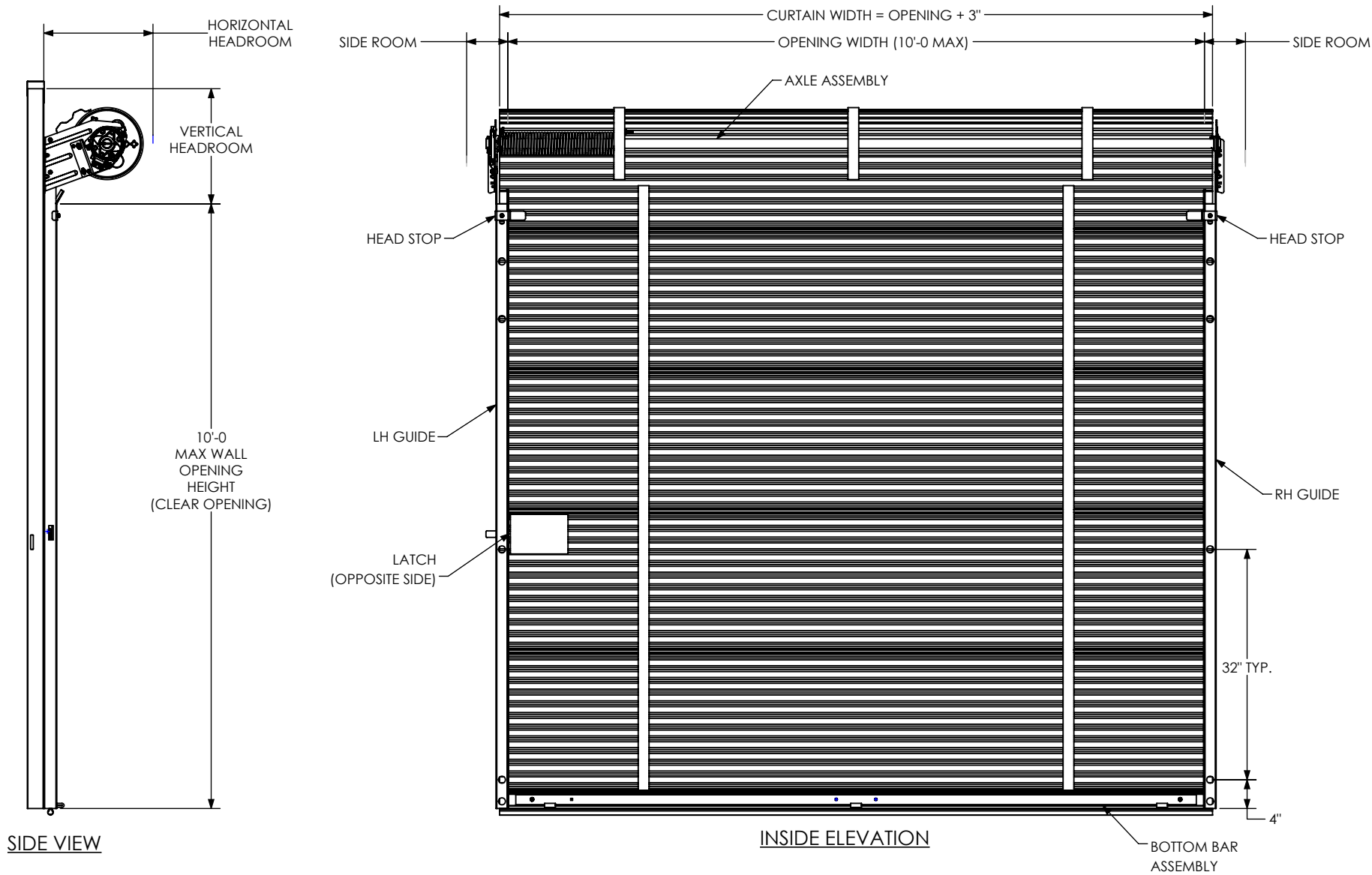


NOTES:

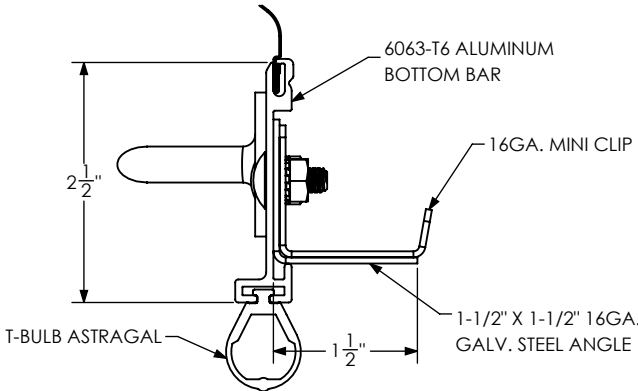
1. CLEARANCES SHOWN ARE RECOMMENDED, LESSER CLEARANCES MAY BE POSSIBLE, CONSULT THE MANUFACTURER.
2. ALL OPENING PREPARATION, ELECTRICAL POWER AND FIELD PAINTING SHALL BE PROVIDED BY OTHERS.
3. CURTAIN FINISH SHALL BE SILICONIZED POLYESTER PRE-PAINT OVER GALVANIZED GRADE E STEEL.
4. GUIDES, BRACKETS, BOTTOM BAR ANGLE, HEAD STOPS, AND HANDLES ARE ALL GALVANIZED. MINI LATCH SHALL BE STAINLESS STEEL OR YELLOW ZINC COATED.
5. MAX. SIZE 10'-0 X 10'-0
6. THIS DOOR COMPLIES WITH IBC/IRC 2018 (TEXAS) AND THE CURRENT FBC.

REQUIRED CLEARANCES			
OPENING HEIGHT	THRU 7'-4	OVER 7'-4 THRU 8'-8	OVER 8'-8 THRU 10'-0
VERTICAL HEADROOM	16"	16-1/2"	17-1/2"
HORIZONTAL HEADROOM	16"	16-1/2"	17-1/2"
SIDE ROOM	6"	6"	6"

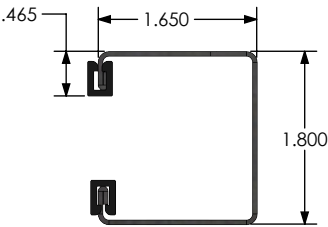
REVISIONS			
ZONE	REV.	DESCRIPTION	DATE
	-	INITIAL RELEASE	4/13/25
			APPROVED
			BLA



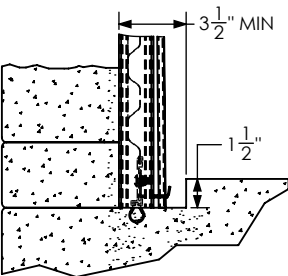
TYPICAL PANEL DETAIL (26GA.)



BOTTOM BAR ASSEMBLY DETAIL



GUIDE DETAIL (18GA.)



RAIN LIP DETAIL
EXTERIOR APPLICATION ONLY

9530

*PRINTED COPIES OF THIS DOCUMENT ARE NOT CONSIDERED SIGNED AND SEALED AND THE SIGNATURE MUST BE VERIFIED ON ANY ELECTRONIC COPIES

JOHN E. SCATES, P.E.
8811 TEEL PKWY #100-5175
FRISCO, TX 75036
FL PE 51737
TX PE 56308/F-2203

UNLESS OTHERWISE SPECIFIED:		NAME	DATE
DIMENSIONS ARE IN INCHES	DRAWN	BLA	4/13/25
TOLERANCES:	CHECKED		
FRACTIONAL ± 1/32	ENG APPR.		
ANGULAR: MACH ±.5°/BEND ±.5°	MFG APPR.		
TWO PLACE DECIMAL ±.015	Q.A.		
THREE PLACE DECIMAL ±.005	COMMENTS:		
INTERPRET GEOMETRIC TOLERANCING PER:			
MATERIAL			
FINISH			
DO NOT SCALE DRAWING			

SteelBlue
STEELBLUE BUILDING COMPONENTS, LLC
One Robinson Plaza - Suite 240 | 6600 Steubenville Pike
Pittsburgh, Pa 15205 | (412) 857-3496 | www.steelbluebc.com

TITLE:
**9530 SERIES DOOR
CAD DETAILS**

SIZE	DWG. NO.	REV
B	9530 SERIES DOOR	-
SCALE: 1:20	WEIGHT:	SHEET 1 OF 2

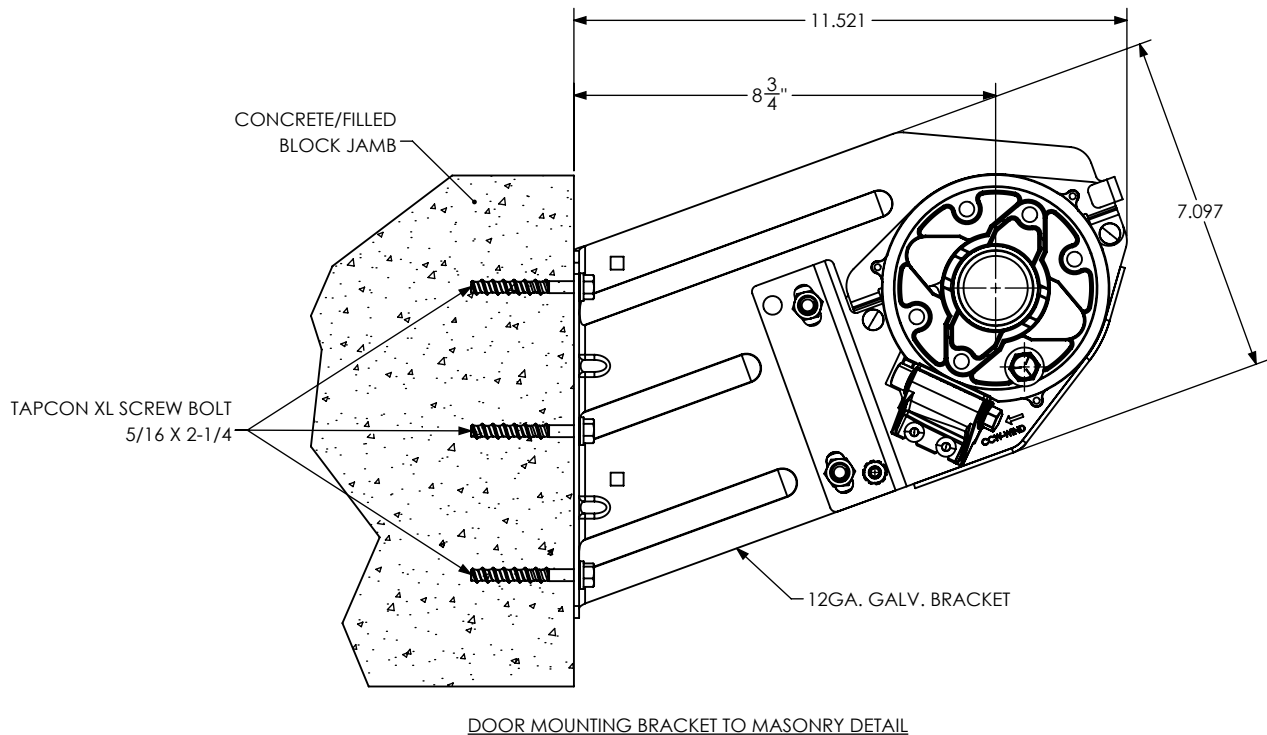
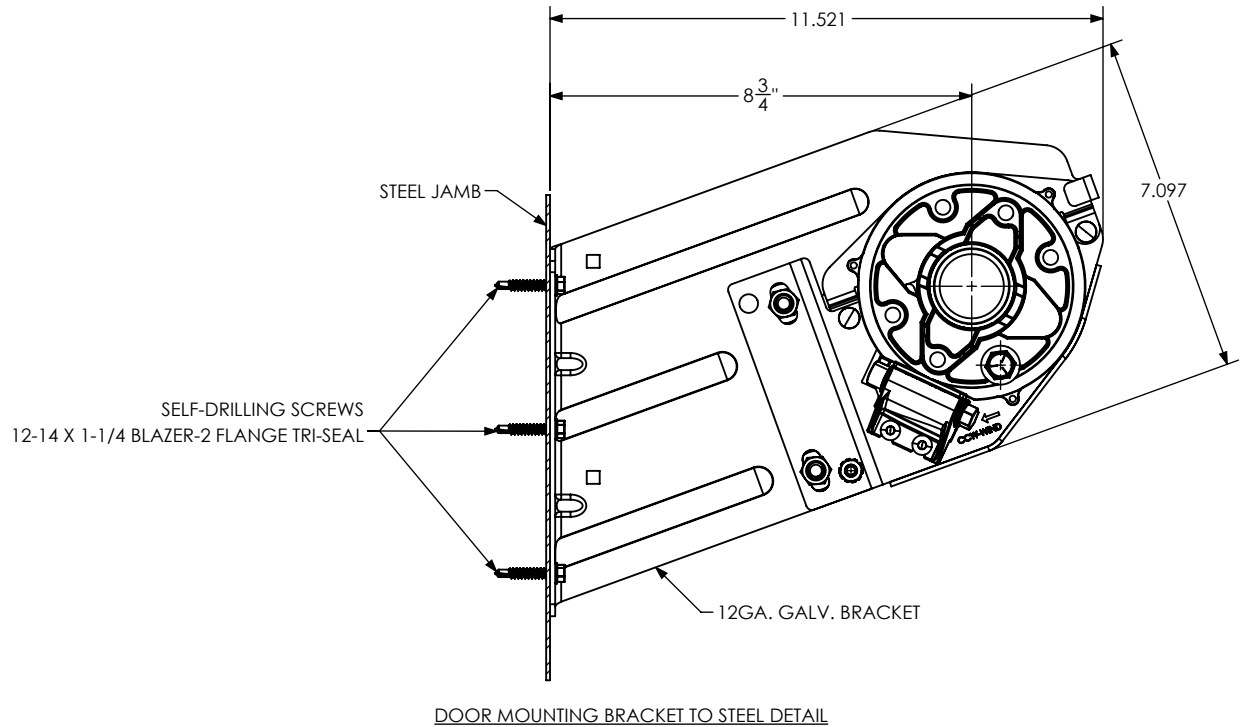
4

3

2

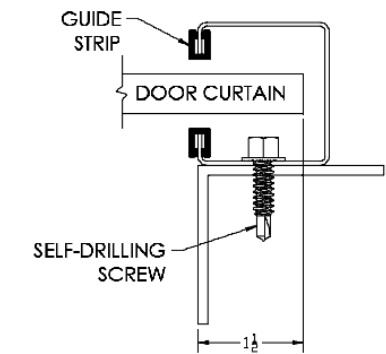
1

B



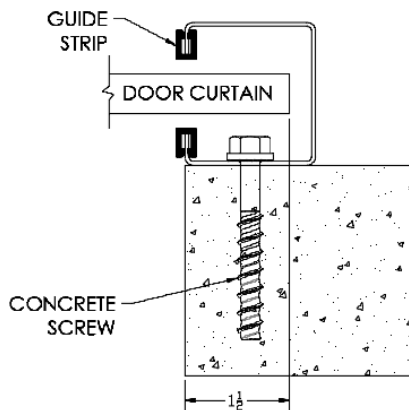
A

GUIDE MOUNTING



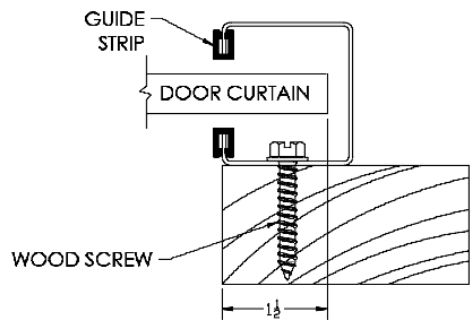
STEEL MOUNT

(#12-14 X 1 1/4 BLAZER-2 FLANGE TRI-SEAL SCREW (EXT.))
(1/4-14 X 5/8 STITCH SCREW (INT.))



MASONRY MOUNT

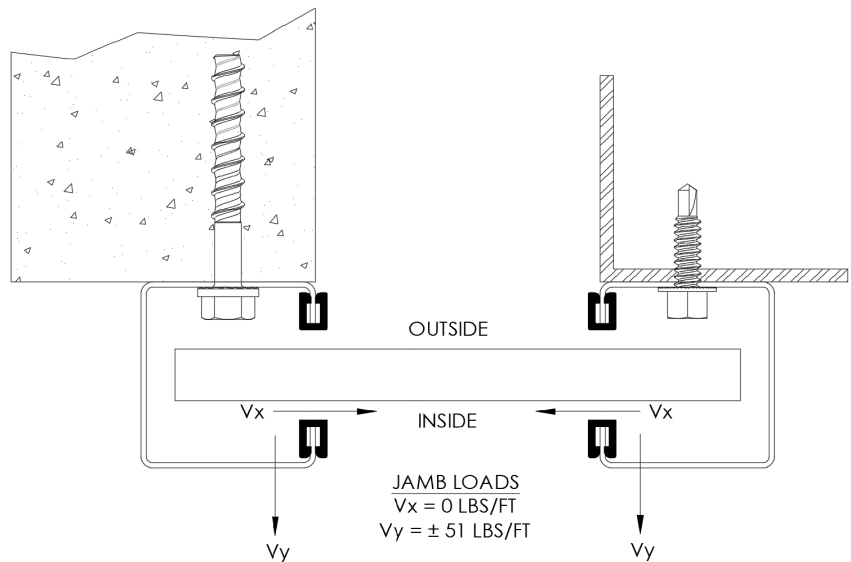
(1/4" X 2 1/4 CONCRETE SCREW BOLT+)



WOOD MOUNT

(#14-10 X 1 1/2 WOOD SCREW)

B



GENERAL NOTES:

1. THIS DOOR WAS EVALUATED IN ACCORDANCE WITH TEST METHOD ANSI/DASMA 108.
2. THIS PRODUCT EVALUATION IS GENERIC. IT DOES NOT INCLUDE INFORMATION PREPARED FOR A SPECIFIC SITE.
3. ALL DOOR JAMBS (STEEL OR MASONRY) MUST BE DESIGNED TO RESIST THE PRESSURES SHOWN.
4. THE DOOR ASSEMBLY SHALL BE INSTALLED IN ACCORDANCE WITH THE MANUFACTURER'S INSTALLATION INSTRUCTIONS.

DOOR SCHEDULE	
DOOR WIDTH	DESIGN PRESSURE (PSF)
6'-0	+16.3 PSF
	-18.4 PSF
7'-0	+14.1 PSF
	-15.9 PSF
8'-0	+12.4 PSF
	-14.0 PSF
8'-8	+11.5 PSF
	-13.0 PSF
9'-0	+10.6 PSF
	-12.0 PSF
10'-0	+8.7 PSF
	-9.8 PSF

A

9530

4


3

2

1

JOHN E. SCATES, P.E.
8811 TEEL PKWY #100-5175
FRISCO, TX 75036
FL PE 51737
TX PE 56308/F-2203

*PRINTED COPIES OF THIS DOCUMENT ARE NOT CONSIDERED SIGNED AND SEALED AND THE SIGNATURE MUST BE VERIFIED ON ANY ELECTRONIC COPIES

UNLESS OTHERWISE SPECIFIED:		NAME	DATE	<div>SteelBlue</div> <div>STEELBLUE BUILDING COMPONENTS, LLC One Robinson Plaza - Suite 240 6600 Steubenville Pike Pittsburgh, Pa 15205 (412) 857-3496 www.steelbluebc.com</div> <div>TITLE: 9530 SERIES DOOR CAD DETAILS</div>		
DIMENSIONS ARE IN INCHES TOLERANCES: FRACTIONAL ± 1/32 ANGULAR: MACH ±.5°/BEND ±.5° TWO PLACE DECIMAL ±.015 THREE PLACE DECIMAL ±.005	DRAWN	BLA	4/13/25	SIZE DWG. NO. REV 9530 SERIES DOOR -		
	CHECKED					
	ENG APPR.					
	MFG APPR.					
INTERPRET GEOMETRIC TOLERANCING PER:	Q.A.			SCALE: 1:20 WT: SHEET 2 OF 2		
MATERIAL	COMMENTS:					
FINISH						
DO NOT SCALE DRAWING						