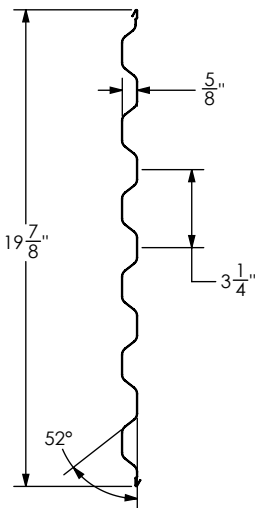


NOTES:

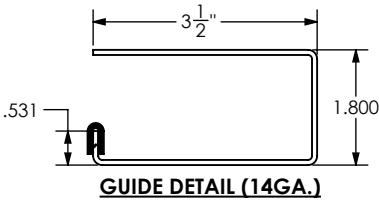
- CLEARANCES SHOWN ARE RECOMMENDED, LESSER CLEARANCES MAY BE POSSIBLE, CONSULT THE MANUFACTURER.
- ALL OPENING PREPARATION, ELECTRICAL POWER AND FIELD PAINTING SHALL BE PROVIDED BY OTHERS.
- CURTAIN FINISH SHALL BE SILICONIZED POLYESTER PRE-PAINT OVER GALVANIZED GRADE E STEEL.
- GUIDES, BRACKETS, BOTTOM BAR ANGLE, HEAD STOPS, AND HANDLES ARE ALL GALVANIZED. MINI LATCH SHALL BE STAINLESS STEEL OR YELLOW ZINC COATED.
- MAX. SIZE 10'-0 X 10'-0
- THIS DOOR COMPLIES WITH IBC/IRC 2018 (TEXAS) AND THE CURRENT FBC.

REQUIRED CLEARANCES			
OPENING HEIGHT	THRU 7'-4	OVER 7'-4 THRU 8'-8	OVER 8'-8 THRU 10'-0
VERTICAL HEADROOM	16"	16-1/2"	17-1/2"
HORIZONTAL HEADROOM	16"	16-1/2"	17-1/2"
SIDE ROOM	6"	6"	6"

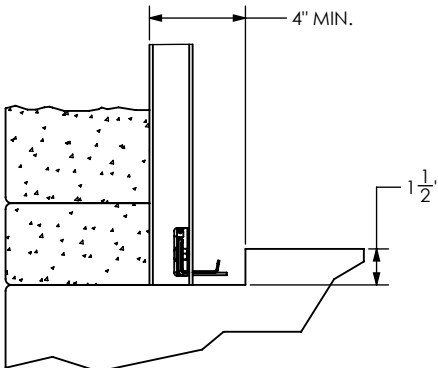
REVISIONS				
ZONE	REV.	DESCRIPTION	DATE	APPROVED
	-	INITIAL RELEASE	4/13/25	BLA



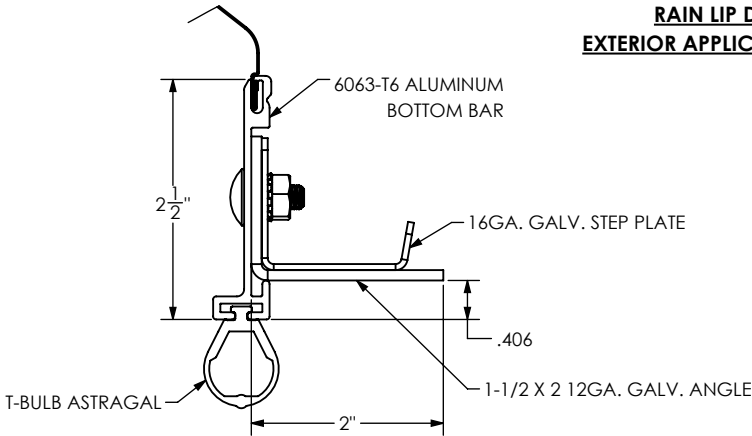
TYPICAL PANEL DETAIL (26GA.)



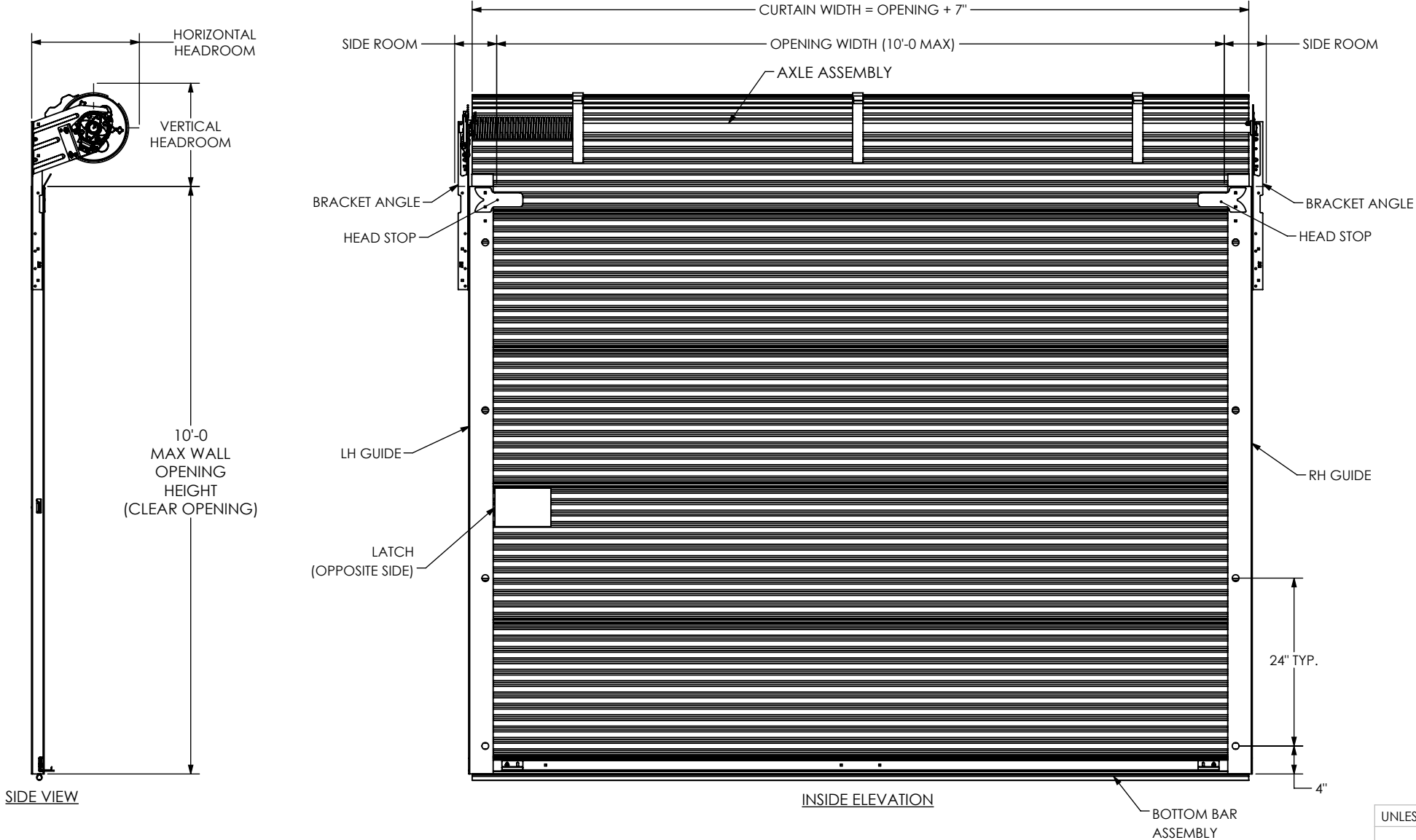
GUIDE DETAIL (14GA.)



RAIN LIP DETAIL
EXTERIOR APPLICATION ONLY



BOTTOM BAR ASSEMBLY DETAIL



JOHN E. SCATES, P.E.
8811 TEEL PKWY #100-5175
FRISCO, TX 75036
FL PE 51737
TX PE 56308/F-2203

*PRINTED COPIES OF THIS DOCUMENT ARE NOT CONSIDERED SIGNED AND SEALED AND THE SIGNATURE MUST BE VERIFIED ON ANY ELECTRONIC COPIES

UNLESS OTHERWISE SPECIFIED:		NAME	DATE
DIMENSIONS ARE IN INCHES	DRAWN	BLA	4/13/25
TOLERANCES:	CHECKED		
FRACTIONAL $\pm 1/32$	ENG APPR.		
ANGULAR: MACH $\pm .5^\circ$ /BEND $\pm .5^\circ$	MFG APPR.		
TWO PLACE DECIMAL $\pm .015$	Q.A.		
THREE PLACE DECIMAL $\pm .005$	COMMENTS:		
INTERPRET GEOMETRIC TOLERANCING PER:			
MATERIAL			
FINISH			
DO NOT SCALE DRAWING			



STEELBLUE BUILDING COMPONENTS, LLC
One Robinson Plaza - Suite 240 | 6600 Steubenville Pike
Pittsburgh, Pa 15205 | (412) 857-3496 | www.steelbluebc.com

TITLE:

9570-LA SERIES DOOR
CAD DETAILS

SIZE	DWG. NO.	REV
B	9570-LA SERIES DOOR	-

SCALE: 1:20 WT: SHEET 1 OF 2

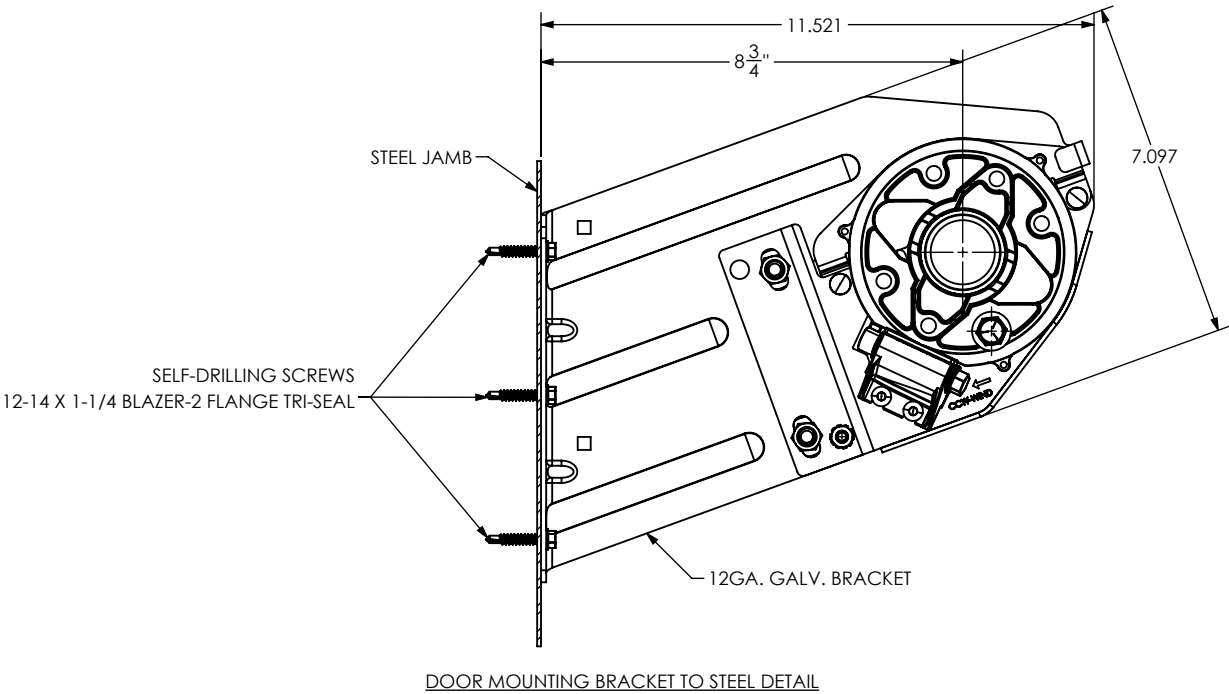
4

3

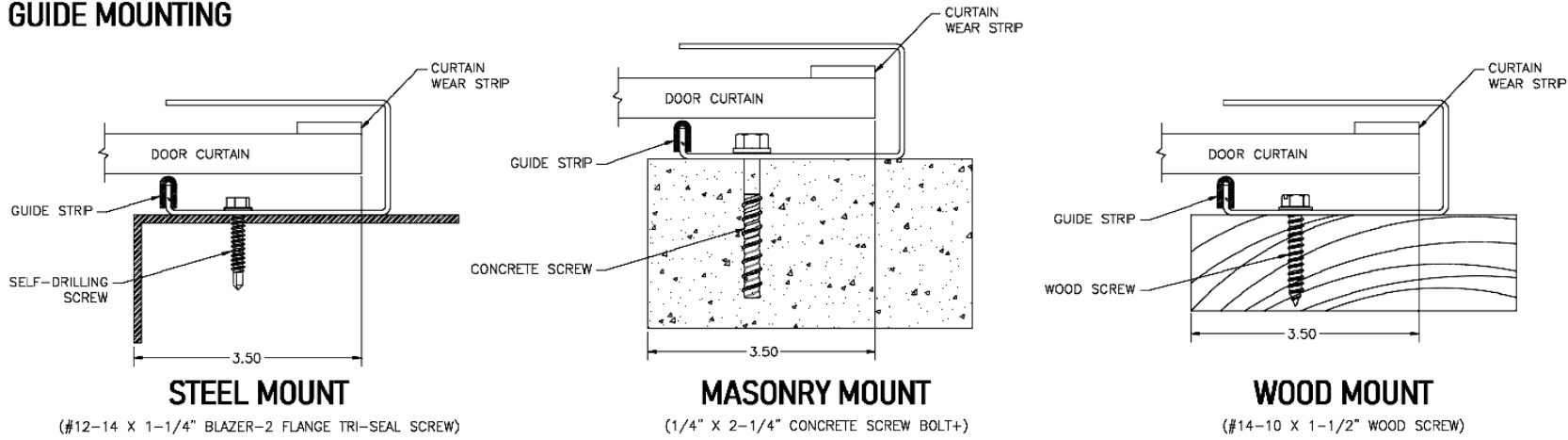
2

1

B

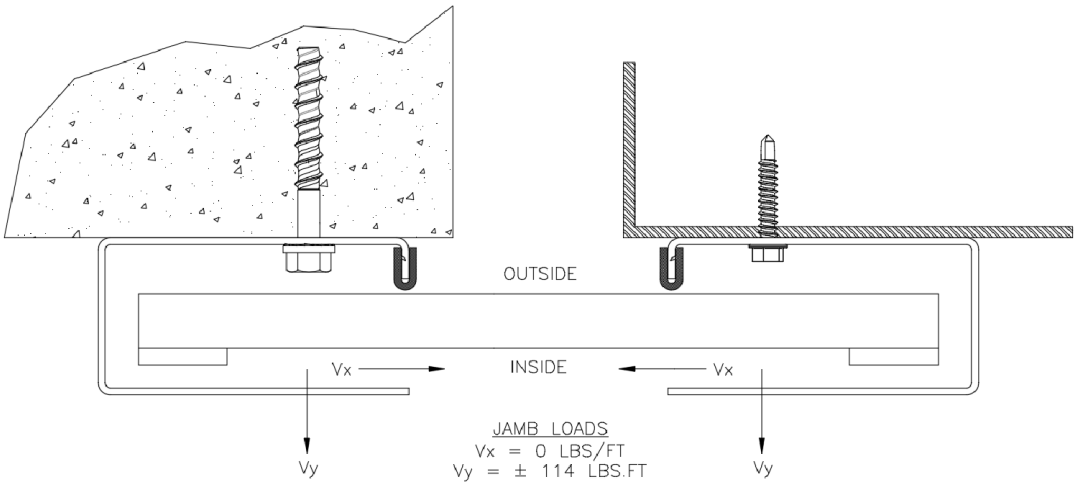
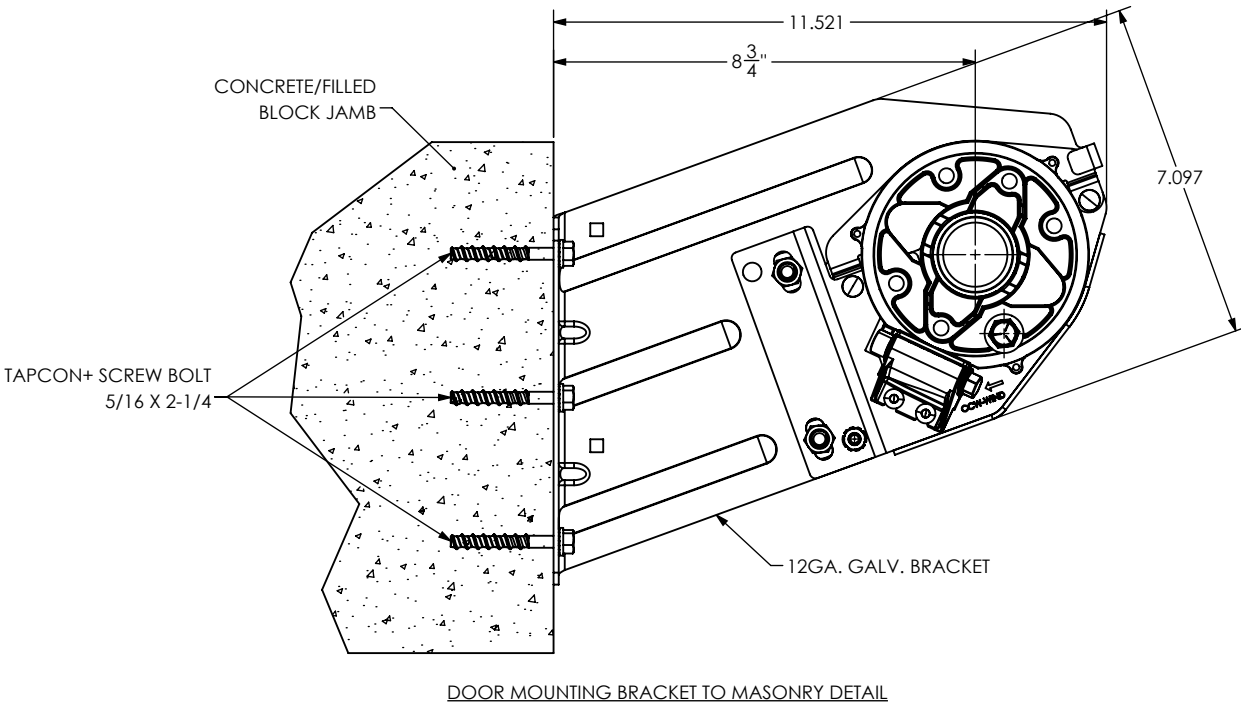


GUIDE MOUNTING



B

A



DOOR SCHEDULE	
DOOR WIDTH	DESIGN PRESSURE (PSF)
6'-0	+31.1 PSF
	-35.3 PSF
7'-0	+26.9 PSF
	-30.6 PSF
8'-0	+23.7 PSF
	-26.9 PSF
8'-8	+22.0 PSF
	-25.0 PSF
9'-0	+20.4 PSF
	-23.2 PSF
10'-0	+16.7 PSF
	-19.0 PSF

GENERAL NOTES:


1. THIS DOOR WAS EVALUATED IN ACCORDANCE WITH TEST METHOD ANSI/DASMA108.
2. THIS PRODUCT EVALUATION IS GENERIC. IT DOES NOT INCLUDE INFORMATION PREPARED FOR A SPECIFIC SITE.
3. ALL DOOR JAMBS (STEEL OR MASONRY) MUST BE DESIGNED TO RESIST THE PRESSURES SHOWN.
4. THE DOOR ASSEMBLY SHALL BE INSTALLED IN ACCORDANCE WITH THE MANUFACTURER'S INSTALLATION INSTRUCTIONS.

A

9570-LA

JOHN E. SCATES, P.E.
8811 TEEL PKWY #100-5175
FRISCO, TX 75036
FL PE 51737
TX PE 56308/F-2203

*PRINTED COPIES OF THIS DOCUMENT ARE NOT CONSIDERED SIGNED AND SEALED AND THE SIGNATURE MUST BE VERIFIED ON ANY ELECTRONIC COPIES

UNLESS OTHERWISE SPECIFIED:		NAME	DATE	<div> STEELBLUE BUILDING COMPONENTS, LLC One Robinson Plaza - Suite 240 6600 Steubenville Pike Pittsburgh, Pa 15205 (412) 857-3496 www.steelbluebc.com</div>		
DIMENSIONS ARE IN INCHES TOLERANCES: FRACTIONAL ± 1/32 ANGULAR: MACH ±.5°/BEND ±.5° TWO PLACE DECIMAL ±.015 THREE PLACE DECIMAL ±.005	DRAWN	BLA	4/13/25	TITLE: 9570-LA SERIES DOOR CAD DETAILS		
	CHECKED					
	ENG APPR.					
	MFG APPR.					
INTERPRET GEOMETRIC TOLERANCING PER:	Q.A.			SIZE DWG. NO. REV B 9570-LA SERIES DOOR -		
MATERIAL	COMMENTS:					
FINISH						
DO NOT SCALE DRAWING				SCALE: 1:20	WT:	SHEET 2 OF 2

4

3

2

1