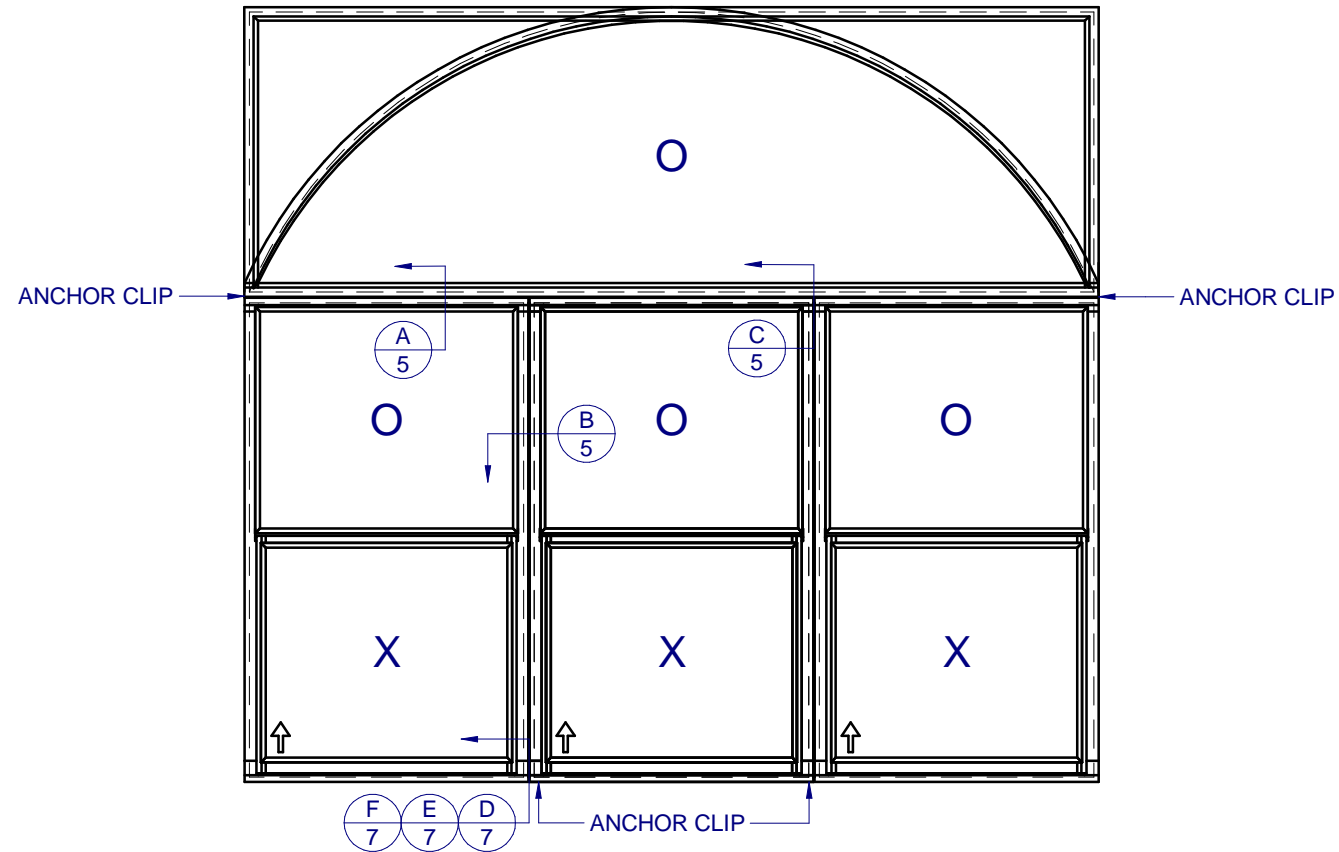
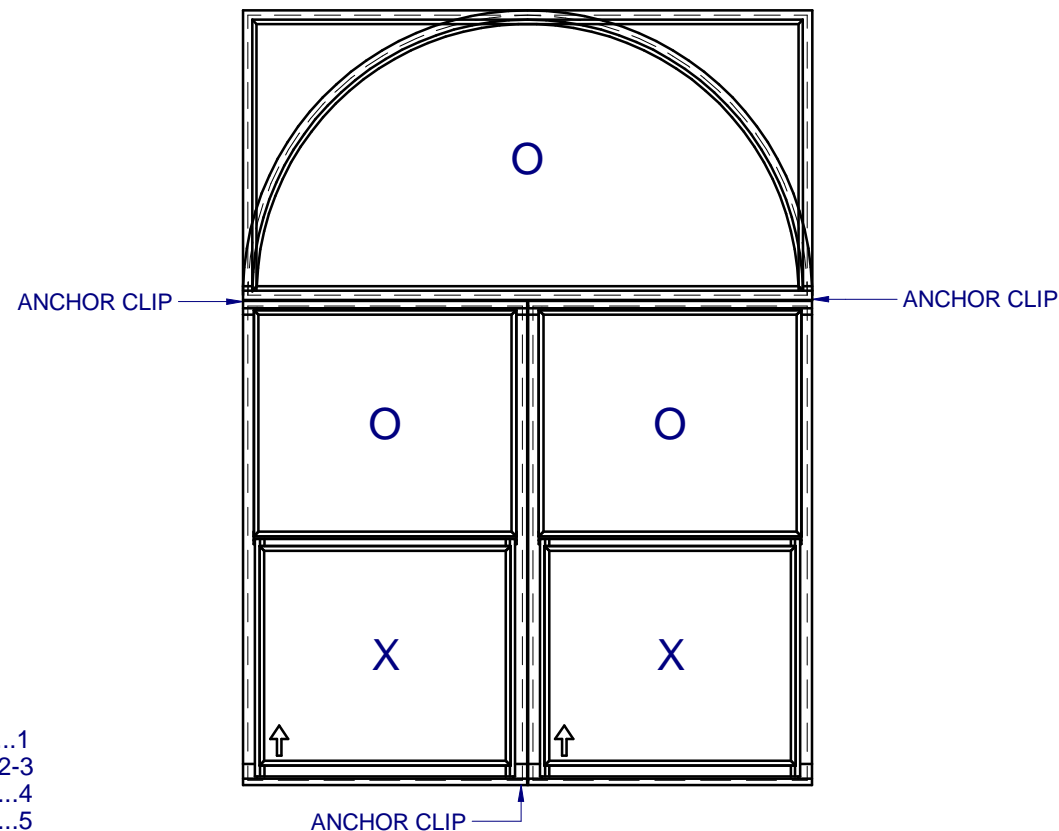


2" ALUM. MULL BAR - NON-IMPACT

SHOWN w/DIFFERENT OPTIONS



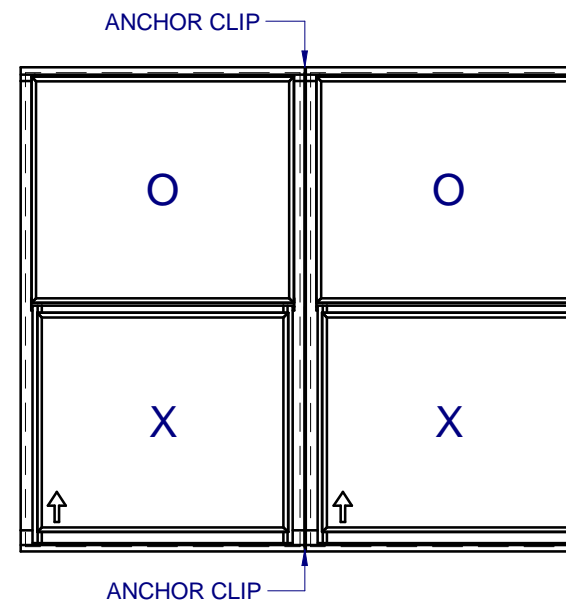
EXAMPLE HORIZ./VERT. MULLION FOR SECTION VIEW ONLY



EXAMPLE HORIZ./VERT. MULLION FOR SECTION VIEW ONLY

GENERAL NOTES:

1. THE PRODUCT SHOWN HEREIN IS DESIGNED AND MANUFACTURED TO COMPLY WITH THE FLORIDA BUILDING CODE (FBC), CURRENT EDITION.
2. CONFIGURATIONS (SEE SHEET 2): VERTICAL OR HORIZONTAL.
3. SEE MULLION CHARTS FOR MAX. DESIGN PRESSURES AND LENGTH. (REFER TO SHEETS 2-3)
4. ANCHORAGE: THE 33 1/3% STRESS INCREASE HAS NOT BEEN USED IN THE DESIGN OF THIS PRODUCT. SEE SHEET 7 FOR ANCHOR DETAIL. WINDLOAD DURATION FACTOR $C_d=1.6$ WAS USED FOR WOOD ANCHOR CALCULATIONS.
5. NOT APPROVED FOR IMPACT RESISTANCE. IMPACT PROTECTIVE SYSTEM IS REQUIRED IN WIND BORNE DEBRIS REGION.
6. DESIGN PRESSURE OF MULLED UNITS SHALL BE CONTROLLED BY THE LESSER DESIGN PRESSURE OF THE MULLION OR THE INDIVIDUAL WINDOW UNITS.
7. DESIGN PRESSURES AND INSTALLATION DETAILS SHOWN IN THIS DOCUMENT APPLY ONLY TO THE MULLION. WINDOWS MUST BE APPROVED UNDER SEPARATE APPROVAL.
8. RESPONSIBILITY OF SELECTING FENESTRATION PRODUCTS TO MEET ANY APPLICABLE LOCAL LAWS, BUILDING CODES, ORDINANCES OR OTHER SAFTEY REQUIREMENTS RESTS SOLEY WITH THE ARCHITECT, ENGINEER OF RECORD, BUILDING OWNER OR CONTRACTOR.
9. SINGLE UNITS TO BE MULLED ARE NOT LIMITED TO THOSE SHOWN IN THIS DRAWING. SINGLE UNITS TO BE MULLED TOGETHER MUST BE MANUFACTURED BY CUSTOM WINDOW SYSTEMS, INC. AND MUST BE MADE OUT OF VINYL PVC OR EXTRUDED ALUMINUM.
10. VERTICAL MULLED UNITS MAY BE MULLED INDEFINITELY AS LONG AS THE SINGLE UNIT WIDTH AND HEIGHT ARE NOT EXCEEDED, AND MULLIONS ARE ANCHORED AS SHOWN HERE IN.
11. HORIZONTAL MULLION SHALL EXTEND THE ENTIRE WIDTH OF THE MULLED UNIT. VERTICAL MULLION IS USED TO MULL SIDE BY SIDE UNITS TOGETHER.



EXAMPLE VERT. MULLION FOR SECTION VIEWS ONLY

TABLE OF CONTENTS

GENERAL NOTES & ELEVATIONS.....	1
DP CHARTS.....	2-3
BOM & EXTRUSIONS.....	4
SECTION VIEWS.....	5
CONFIGURATIONS & ANCHOR NOTES.....	6
INSTALLATION DETAILS.....	7



1900 SW 44TH AVE.
OCALA, FLORIDA 34474
WWW.CWS.CC

2" ALUM. MULL BAR NON-IMPACT

PROPRIETARY AND CONFIDENTIAL
THE INFORMATION CONTAINED IN THIS DRAWING IS THE SOLE PROPERTY OF CUSTOM WINDOW SYSTEMS, INC. ANY REPRODUCTION IN PART OR AS A WHOLE WITHOUT THE WRITTEN PERMISSION OF CUSTOM WINDOW SYSTEMS, INC IS PROHIBITED.

FLORIDA APPROVAL NO.:

5777



9/14/2023

LUCAS A. TURNER, P.E.
FL PE # 58201
Turner Engineering & Consulting, Inc.
2428 Old Natchez Trc Trl
Camden, TN 38320
PH. 941-380-1574

SHEET DESCRIPTION:

GENERAL NOTES AND ELEVATIONS

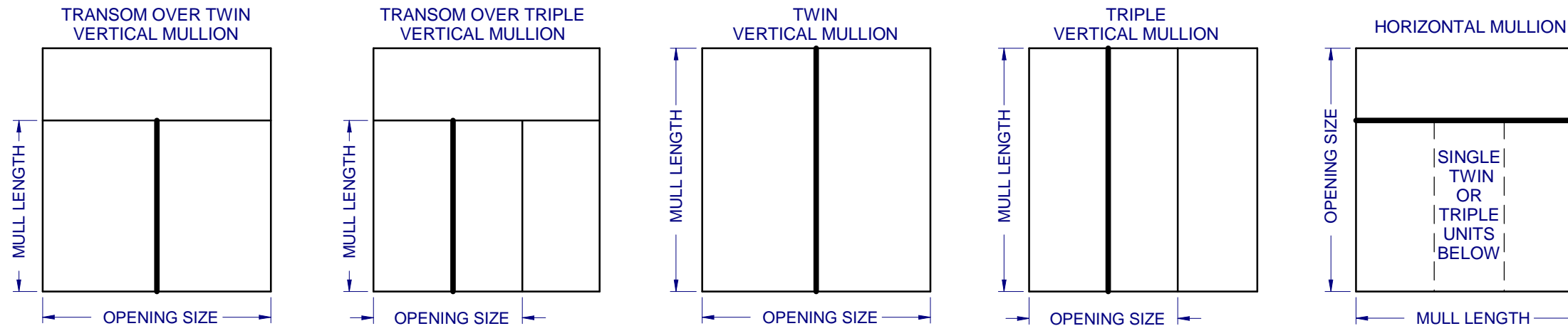
DRAWN BY:	DATE:
MCS	9/7/2023
DWG #:	REV.:
CWS-245	E
SCALE:	SHEET
1:25	1 OF 7

DESIGN PRESSURE CHART (PSF) FOR NON-IMPACT ALUMINUM 2" MULLION H-1950, HORIZONTAL OR VERTICAL, WITH 1522 CLIPS USING TWO (2) #10 SCREWS INTO WOOD or METAL, 3/16" ITW TAPCONS or DEWALT ULTRACON+ INTO SOLID CONCRETE WITH WASHERS PER CLIP. HOLLOW or GROUT-FILLED BLOCK REQUIRE TWO (2) 1/4" DEWALT ULTRACON+.

	OPENING WIDTH (in.)																
	39	45	51	57	63	69	75	81	87	93	99	106.375	114	120	132	144	
MULL LENGTH (in.)	37	115.8	102.3	91.5	82.8	75.6	69.6	64.5	60.0	56.1	52.8	49.8	46.5	43.5	41.5	37.9	34.9
	42.75	98.2	86.9	77.9	70.6	64.6	59.5	55.1	51.4	48.1	45.2	42.7	39.9	37.4	35.6	32.5	30.0
	48.75	84.3	74.7	67.2	61.0	55.8	51.5	47.8	44.5	41.7	39.3	37.1	34.7	32.5	31.0	28.4	26.1
	53.125	76.1	67.6	60.9	55.3	50.7	46.8	43.5	40.6	38.0	35.8	33.8	31.6	29.7	28.3	25.9	23.9
	57	70.0	62.3	56.1	51.1	46.8	43.3	40.2	37.5	35.2	33.1	31.3	29.3	27.5	26.2	24.0	22.1
	63	62.1	55.4	50.0	45.5	41.8	38.6	35.9	33.6	31.5	29.7	28.1	26.3	24.7	23.6	21.6	19.9
	66.75	58.0	51.7	46.7	42.6	39.1	36.2	33.5	31.0	28.9	27.1	25.5	23.7	22.2	21.1	19.2	17.6
	72	48.9	42.8	38.2	34.6	31.6	28.9	26.6	24.7	23.0	21.6	20.3	18.9	17.6	16.8	15.3	-
	76	41.4	36.2	32.3	29.3	26.8	24.5	22.6	21.0	19.6	18.3	17.2	16.0	-	-	-	-
	80	35.4	31.0	27.6	24.9	22.8	21.0	19.4	18.0	16.7	15.7	-	-	-	-	-	-
	84	30.5	26.7	23.7	21.4	19.6	18.1	16.7	15.5	-	-	-	-	-	-	-	-
	90	24.8	21.6	19.2	17.3	15.8	-	-	-	-	-	-	-	-	-	-	-
	96	20.3	17.7	15.8	-	-	-	-	-	-	-	-	-	-	-	-	-
102	16.9	-	-	-	-	-	-	-	-	-	-	-	-	-	-	-	

DP CHART IS FOR:
NON-IMPACT 2" MULLION 1950, HORIZONTAL OR VERTICAL, USING EITHER (PER END):

- 1522 CLIPS
- (2) #10 SCREWS INTO WOOD or METAL
 - (2) 3/16" ITW TAPCONS or DEWALT ULTRACON+ INTO SOLID CONCRETE or WOOD
 - (2) 1/4" DEWALT ULTRACON+ INTO HOLLOW or GROUT-FILLED BLOCK

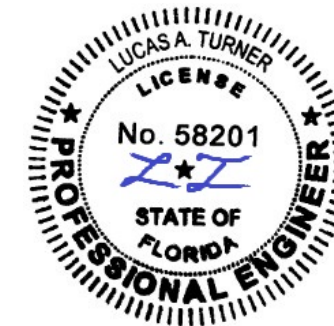


CWS
1900 SW 44TH AVE.
OCALA, FLORIDA 34474
WWW.CWS.CC

**2" ALUM.
MULL BAR
NON-IMPACT**

PROPRIETARY AND CONFIDENTIAL
THE INFORMATION CONTAINED IN THIS DRAWING IS THE SOLE PROPERTY OF CUSTOM WINDOW SYSTEMS, INC. ANY REPRODUCTION IN PART OR AS A WHOLE WITHOUT THE WRITTEN PERMISSION OF CUSTOM WINDOW SYSTEMS, INC IS PROHIBITED.

FLORIDA APPROVAL NO.:
5777



9/14/2023

LUCAS A. TURNER, P.E.
FL PE # 58201
Turner Engineering & Consulting, Inc.
2428 Old Natchez Trc Trl
Camden, TN 38320
PH. 941-380-1574

SHEET DESCRIPTION:
DP CHART
1522 CLIP
2 ANCHORS

DRAWN BY: MCS	DATE: 9/7/2023
DWG #: CWS-245	REV.: E
SCALE: 1:1	SHEET 2 OF 7

DESIGN PRESSURE CHART (PSF) FOR NON-IMPACT ALUMINUM 2" MULLION H-1950, HORIZONTAL OR VERTICAL, WITH 1559 STRAP CLIPS USING ONE (1) #10 SCREW INTO WOOD or METAL, 3/16" ITW TAPCON or DEWALT ULTRACON+ INTO SOLID CONCRETE WITH WASHER PER CLIP

DP CHART IS FOR:
NON-IMPACT 2" MULLION 1950, HORIZONTAL OR VERTICAL, USING EITHER (PER END):



- 1559 CLIPS
- (1)#10 SCREWS INTO WOOD or METAL
- (1)3/16" ITW TAPCONS or DEWALT ULTRACON+ INTO SOLID CONCRETE or WOOD
- (1)1/4" DEWALT ULTRACON+ INTO HOLLOW or GROUT-FILLED BLOCK or SOLID CONCRETE

**2" ALUM.
MULL BAR
NON-IMPACT**

MULL LENGTH (in.)		OPENING WIDTH (in.)															
		39	45	51	57	63	69	75	81	87	93	99	106 3/8	114	120	132	144
37	Masonry 1	57.9	51.1	45.8	41.4	37.8	34.8	32.2	30.0	28.1	26.4	24.9	23.3	21.8	20.7	18.9	17.4
	Wood/Metal	75.0	66.2	59.2	53.6	49.0	45.1	41.7	38.8	36.3	34.2	32.2	30.1	28.2	26.8	24.5	22.6
	Masonry 2	101.9	89.9	80.5	72.8	66.5	61.2	56.7	52.8	49.4	46.4	43.8	40.9	38.3	36.5	33.3	30.7
42 3/4	Masonry 1	49.1	43.4	39.0	35.3	32.3	29.7	27.6	25.7	24.1	22.6	21.3	20.0	18.7	17.8	16.3	-
	Wood/Metal	63.5	56.2	50.4	45.7	41.8	38.5	35.7	33.3	31.1	29.3	27.6	25.8	24.2	23.1	21.1	19.4
	Masonry 2	86.3	76.4	68.5	62.1	56.8	52.3	48.5	45.2	42.3	39.8	37.5	35.1	32.9	31.3	28.6	26.3
48 3/4	Masonry 1	42.1	37.4	33.6	30.5	27.9	25.7	23.9	22.3	20.9	19.6	18.5	17.3	16.3	15.5	-	-
	Wood/Metal	54.5	48.4	43.5	39.5	36.1	33.3	30.9	28.8	27.0	25.4	24.0	22.4	21.0	20.1	18.4	16.9
	Masonry 2	74.1	65.7	59.1	53.6	49.1	45.3	42.0	39.2	36.7	34.6	32.6	30.5	28.6	27.3	24.9	23.0
53 1/8	Masonry 1	38.1	33.8	30.4	27.7	25.4	23.4	21.7	20.3	19.0	17.9	16.9	15.8	-	-	-	-
	Wood/Metal	49.3	43.8	39.4	35.8	32.8	30.3	28.1	26.3	24.6	23.2	21.9	20.5	19.2	18.3	16.7	15.4
	Masonry 2	67.0	59.5	53.5	48.7	44.6	41.2	38.2	35.7	33.4	31.5	29.7	27.8	26.1	24.9	22.8	21.0
57	Masonry 1	35.0	31.2	28.1	25.5	23.4	21.6	20.1	18.8	17.6	16.6	15.6	-	-	-	-	-
	Wood/Metal	45.3	40.3	36.3	33.1	30.3	28.0	26.0	24.3	22.8	21.4	20.3	19.0	17.8	17.0	15.5	-
	Masonry 2	61.6	54.8	49.4	44.9	41.2	38.1	35.3	33.0	31.0	29.1	27.5	25.8	24.2	23.1	21.1	19.5
63	Masonry 1	31.1	27.7	25.0	22.8	20.9	19.3	18.0	16.8	15.8	-	-	-	-	-	-	-
	Wood/Metal	40.2	35.8	32.3	29.5	27.1	25.0	23.3	21.7	20.4	19.2	18.2	17.0	16.0	15.3	-	-
	Masonry 2	54.6	48.7	43.9	40.0	36.8	34.0	31.6	29.5	27.7	26.1	24.7	23.1	21.7	20.7	19.0	17.5
66 3/4	Masonry 1	29.0	25.8	23.3	21.3	19.6	18.1	16.8	15.7	-	-	-	-	-	-	-	-
	Wood/Metal	37.6	33.4	30.2	27.6	25.3	23.4	21.8	20.4	19.1	18.0	17.1	16.0	15.0	-	-	-
	Masonry 2	51.0	45.4	41.0	37.4	34.4	31.8	29.6	27.7	26.0	24.5	23.2	21.7	20.4	19.5	17.8	16.4
72	Masonry 1	26.6	23.6	21.3	19.5	17.9	16.6	15.5	-	-	-	-	-	-	-	-	-
	Wood/Metal	34.4	30.6	27.6	25.2	23.2	21.5	20.0	18.7	17.6	16.6	15.7	-	-	-	-	-
	Masonry 2	46.7	41.5	37.5	34.3	31.5	28.9	26.6	24.7	23.0	21.6	20.3	18.9	17.6	16.8	15.3	-
76	Masonry 1	25.0	22.1	20.0	18.3	16.8	15.6	-	-	-	-	-	-	-	-	-	-
	Wood/Metal	32.3	28.7	25.9	23.7	21.8	20.2	18.8	17.6	16.5	15.6	-	-	-	-	-	-
	Masonry 2	41.4	36.2	32.3	29.3	26.8	24.5	22.6	21.0	19.6	18.3	17.2	16.0	-	-	-	-
80	Masonry 1	23.5	20.9	18.8	17.2	15.9	-	-	-	-	-	-	-	-	-	-	-
	Wood/Metal	30.5	27.0	24.4	22.3	20.5	19.0	17.7	16.6	15.6	-	-	-	-	-	-	-
	Masonry 2	35.4	31.0	27.6	24.9	22.8	21.0	19.4	18.0	16.7	15.7	-	-	-	-	-	-
84	Masonry 1	22.3	19.7	17.8	16.2	-	-	-	-	-	-	-	-	-	-	-	-
	Wood/Metal	28.8	25.5	23.0	21.0	19.4	18.0	16.7	15.5	-	-	-	-	-	-	-	-
	Masonry 2	30.5	26.7	23.7	21.4	19.6	18.1	16.7	15.5	-	-	-	-	-	-	-	-
90	Masonry 1	20.6	18.2	16.4	-	-	-	-	-	-	-	-	-	-	-	-	-
	Wood/Metal	24.8	21.6	19.2	17.3	15.8	-	-	-	-	-	-	-	-	-	-	-
	Masonry 2	24.8	21.6	19.2	17.3	15.8	-	-	-	-	-	-	-	-	-	-	-
96	Masonry 1	19.2	16.9	15.2	-	-	-	-	-	-	-	-	-	-	-	-	-
	Wood/Metal	20.3	17.7	15.8	-	-	-	-	-	-	-	-	-	-	-	-	-
	Masonry 2	20.3	17.7	15.8	-	-	-	-	-	-	-	-	-	-	-	-	-
102	Masonry 1	16.9	-	-	-	-	-	-	-	-	-	-	-	-	-	-	-
	Wood/Metal	16.9	-	-	-	-	-	-	-	-	-	-	-	-	-	-	-
	Masonry 2	16.9	-	-	-	-	-	-	-	-	-	-	-	-	-	-	-

NOTES:

MASONRY 1 INDICATES:
3/16" ITW TAPCON or DEWALT ULTRACON+

MASONRY 2 INDICATES:
1/4" DEWALT ULTRACON+

PROPRIETARY AND CONFIDENTIAL
THE INFORMATION CONTAINED IN THIS DRAWING IS THE SOLE PROPERTY OF CUSTOM WINDOW SYSTEMS, INC. ANY REPRODUCTION IN PART OR AS A WHOLE WITHOUT THE WRITTEN PERMISSION OF CUSTOM WINDOW SYSTEMS, INC IS PROHIBITED.

FLORIDA APPROVAL NO.:

5777

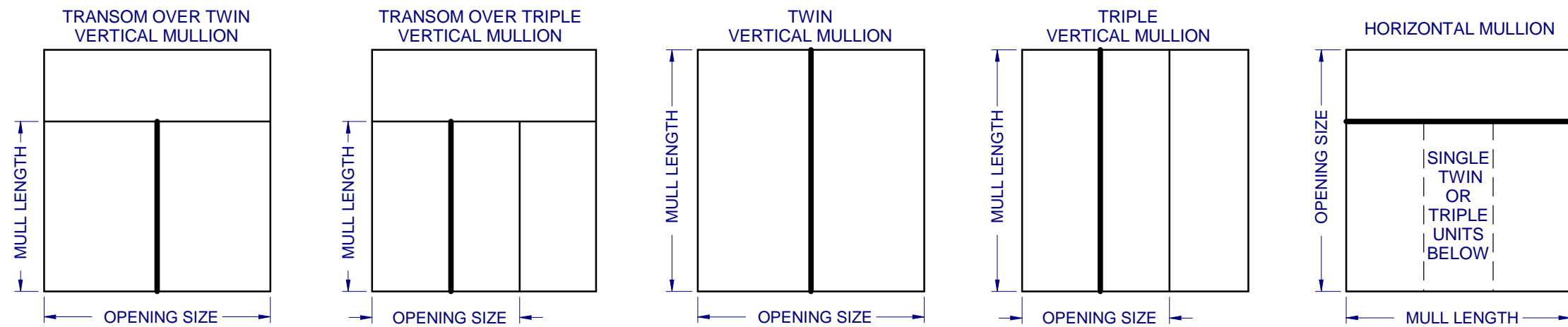


9/14/2023

LUCAS A. TURNER, P.E.
FL PE # 58201
Turner Engineering & Consulting, Inc.
2428 Old Natchez Trc Trl
Camden, TN 38320
PH. 941-380-1574

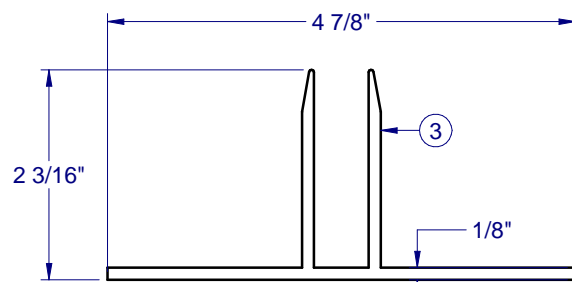
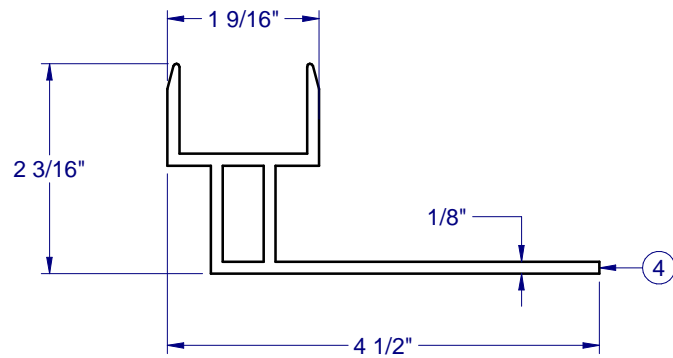
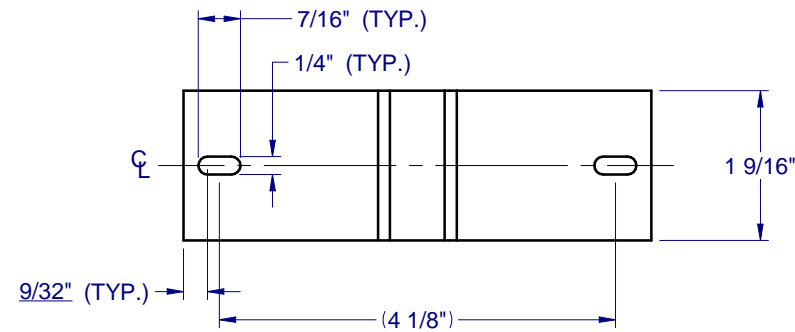
SHEET DESCRIPTION:
DP CHART
1559 CLIP
1 ANCHOR

DRAWN BY: MCS	DATE: 9/7/2023
DWG #: CWS-245	REV.: E
SCALE: 1:1	SHEET 3 OF 7

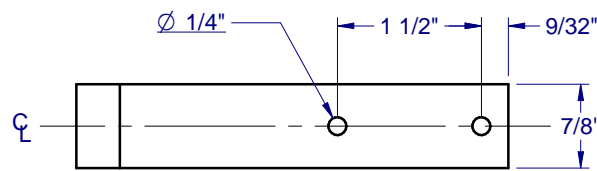


ITEM #.	PART #.	DESCRIPTION	MATERIAL
1	H-1950	2" MULL BAR, ALUM. FRAME	ALUM
2	S-1951	2" HORIZ/VERT CLIP	ALUM
3	S-1522	2" RETRO CLIP	ALUM
4	H-1559	2" MULL BAR CLIP	ALUM
5	S-1895	DRIP CAP ADAPTER	ALUM
6	S-1896	FLANGE ADAPTER	ALUM
7	P-3587	#10 x 1" FLAT HEAD TEK	STEEL
8		#10 OR #12 PAN HEAD TEK *(see note below)	STEEL
9		#10 PAN HEAD TEK	STEEL

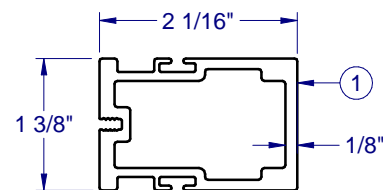
* USE WOOD SCREW SIZE (#10 OR #12), SPECIFIED IN WINDOW UNIT APPROVAL DOCUMENT



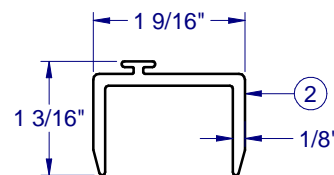
2" RETRO CLIP S-1522



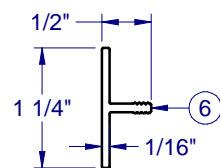
2" STRAP CLIP H-1559



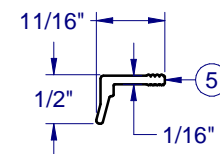
2" MULL BAR H - 1950



2" HORIZ/VERT CLIP S - 1951



FLANGE ADAPTOR - 1896



DRIP CAP ADAPTOR - 1895

NOTE: ALL ALUMINUM EXTRUSIONS ARE 6063-T6 UNLESS OTHERWISE NOTED.



1900 SW 44TH AVE.
OCALA, FLORIDA 34474
WWW.CWS.CC

2" ALUM. MULL BAR NON-IMPACT

PROPRIETARY AND CONFIDENTIAL
THE INFORMATION CONTAINED IN THIS DRAWING IS THE SOLE PROPERTY OF CUSTOM WINDOW SYSTEMS, INC. ANY REPRODUCTION IN PART OR AS A WHOLE WITHOUT THE WRITTEN PERMISSION OF CUSTOM WINDOW SYSTEMS, INC IS PROHIBITED.

FLORIDA APPROVAL NO.:

5777



9/14/2023

LUCAS A. TURNER, P.E.
FL PE # 58201
Turner Engineering & Consulting, Inc.
2428 Old Natchez Trc Trl
Camden, TN 38320
PH. 941-380-1574

SHEET DESCRIPTION:

BOM AND EXTRUSIONS

DRAWN BY:	DATE:
MCS	9/7/2023
DWG #:	REV.:
CWS-245	E
SCALE:	SHEET
1:2	4 OF 7



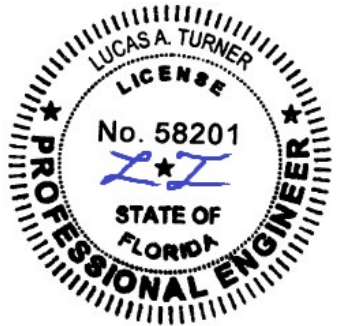
1900 SW 44TH AVE.
OCALA, FLORIDA 34474
WWW.CWS.CC

**2" ALUM.
MULL BAR
NON-IMPACT**

PROPRIETARY AND CONFIDENTIAL
THE INFORMATION CONTAINED IN
THIS DRAWING IS THE SOLE
PROPERTY OF CUSTOM WINDOW
SYSTEMS, INC. ANY
REPRODUCTION IN PART OR AS A
WHOLE WITHOUT THE WRITTEN
PERMISSION OF CUSTOM WINDOW
SYSTEMS, INC IS PROHIBITED.

FLORIDA APPROVAL NO.:

5777



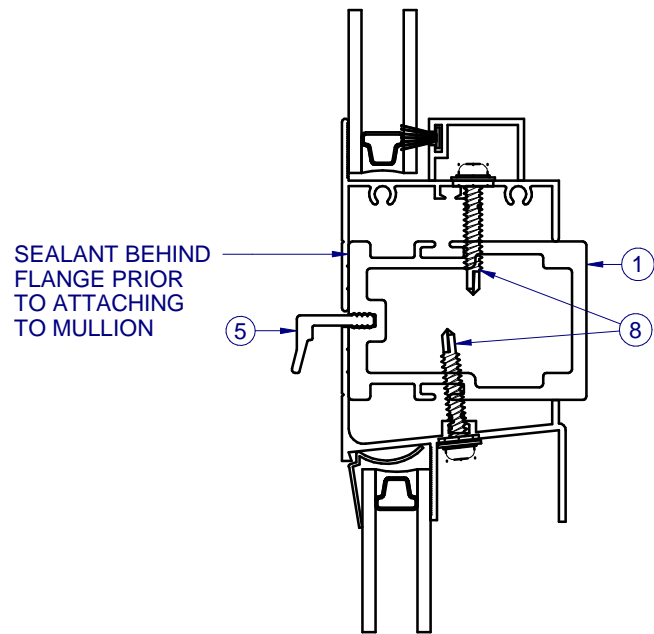
9/14/2023

LUCAS A. TURNER, P.E.
FL PE # 58201
Turner Engineering &
Consulting, Inc.
2428 Old Natchez Trc Trl
Camden, TN 38320
PH. 941-380-1574

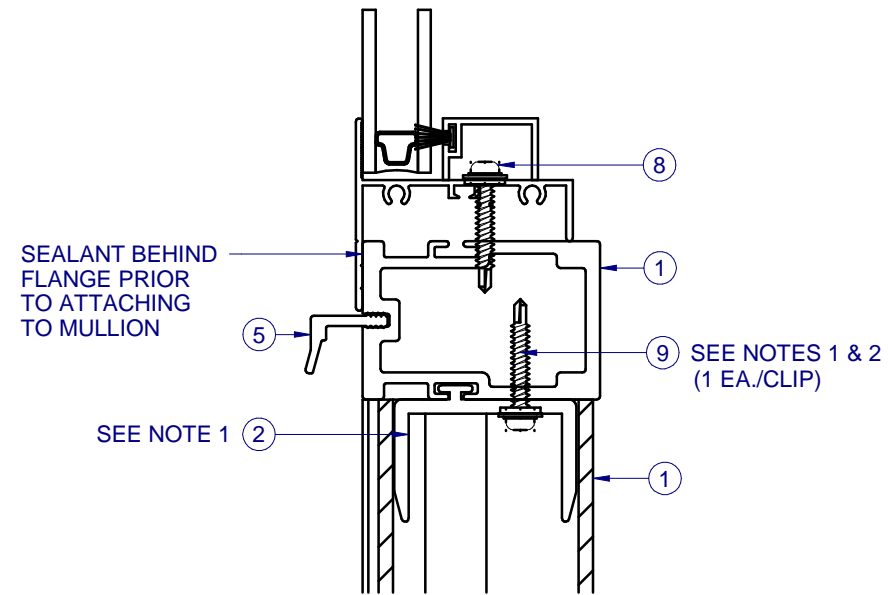
SHEET DESCRIPTION:

SECTION VIEWS

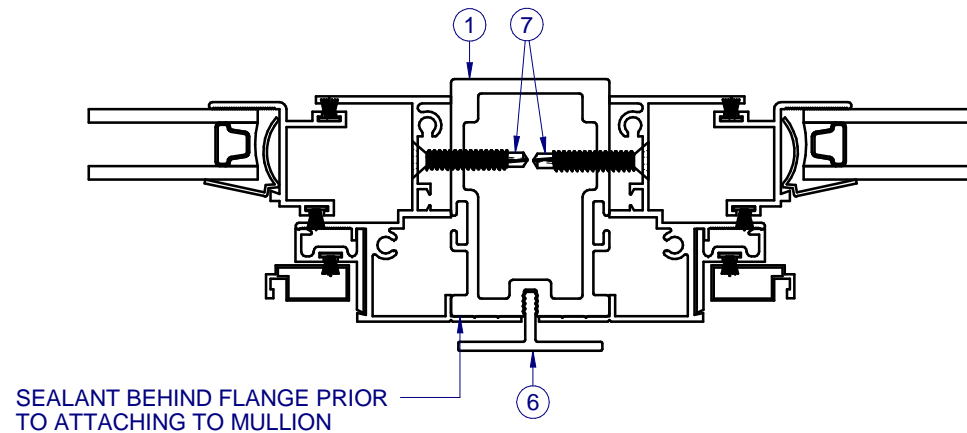
DRAWN BY:	DATE:
MCS	9/7/2023
DWG #:	REV.:
CWS-245	E
SCALE:	SHEET
1:2	5 OF 7



A
5 HORIZONTAL MULL BAR SECTION
SINGLE WINDOW W/TRANSOM



C
5 HORIZONTAL MULLED SECTION
2" HORIZ. / 2" VERT. INTERSECTION



B
5 VERTICAL MULL BAR SECTION
TWIN WINDOWS

NOTES:

1. SLIDE CLIP INTO LOCATION AND SECURE WITH ITEM 9 (QTY 1), AS SHOWN ON THIS SHEET.
2. PRE-DRILLED HOLES (THRU H/V CLIP 1951), BY THE INSTALLER, MAY BE LOCATED AS NEEDED WHILE MAINTAINING MIN. CLIP EDGE DISTANCE OF 9/32" AND MIN. CENTER TO CENTER SPACING OF 1/2".
3. THE ABOVE SECTIONS APPLY TO ALL MULLBAR-TO-MULLBAR CONNECTIONS, REGARDLESS OF ORIENTATION (i.e., HORIZONTAL OR VERTICAL). THE FULL LENGTH MULL MUST BE THE SAME DEPTH, OR GREATER, THAN THE INTERSECTING MULL.



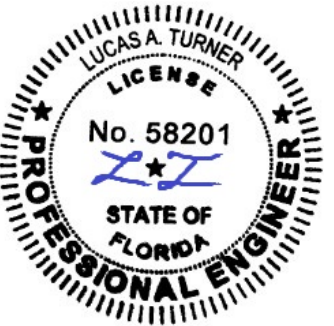
1900 SW 44TH AVE.
OCALA, FLORIDA 34474
WWW.CWS.CC

**2" ALUM.
MULL BAR
NON-IMPACT**

PROPRIETARY AND CONFIDENTIAL
THE INFORMATION CONTAINED IN
THIS DRAWING IS THE SOLE
PROPERTY OF CUSTOM WINDOW
SYSTEMS, INC. ANY
REPRODUCTION IN PART OR AS A
WHOLE WITHOUT THE WRITTEN
PERMISSION OF CUSTOM WINDOW
SYSTEMS, INC IS PROHIBITED.

FLORIDA APPROVAL NO.:

5777



9/14/2023

LUCAS A. TURNER, P.E.
FL PE # 58201
Turner Engineering &
Consulting, Inc.
2428 Old Natchez Trc Trl
Camden, TN 38320
PH. 941-380-1574

SHEET DESCRIPTION:

**CONFIGURATIONS AND
ANCHORAGE NOTES**

DRAWN BY:

MCS

DATE:

9/7/2023

DWG #:

CWS-245

REV.:

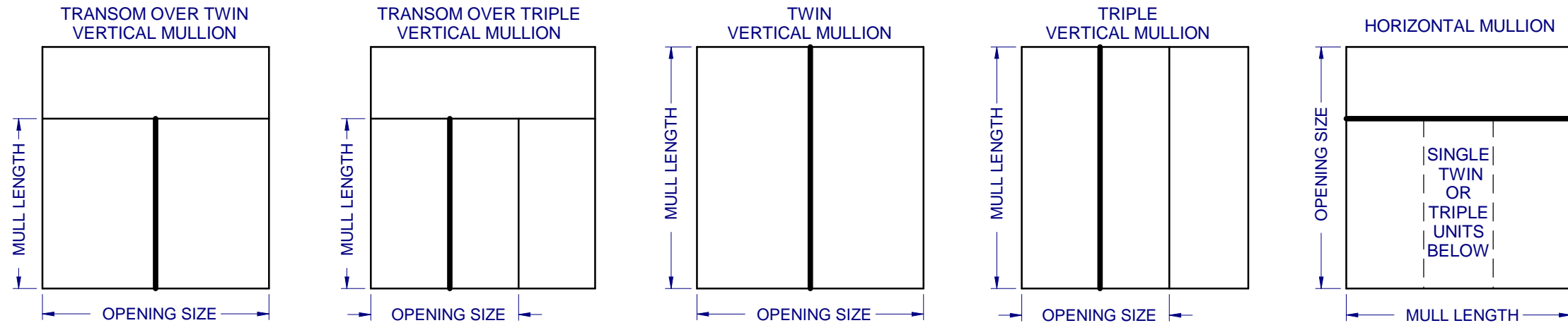
E

SCALE:

1:1

SHEET

6 OF 7



NOTES:

1. AT MULLION LOCATION, ATTACH WINDOW UNIT(S) TO MULLBAR THRU FRAME AS SPECIFIED IN WINDOW UNIT APPROVAL DOCUMENTS. IF ALUMINUM ATTACHMENT IS NOT SPECIFIED IN THE WINDOW UNIT APPROVAL DOCUMENTS, FOLLOW THE ANCHOR SPACING AS INDICATED IN THE WINDOW APPROVAL FOR ATTACHMENT TO WOOD SUBSTRATE, USING A HEX WASHER HEAD TEK SCREW OF THE SAME SIZE (#10 OR #12) AS THE WOOD SCREW INDICATED IN THE WINDOW APPROVAL. TEK SCREWS SHALL BE LONG ENOUGH TO ENSURE THREE (3) THREADS OF PENETRATION BEYOND THE INSIDE WALL OF MULLBAR.
2. MULL CLIP INSTALLATION ANCHOR TYPE, SIZE, SPACING AND EMBEDMENT SHALL BE AS SPECIFIED IN THESE DRAWINGS, SEE TABLE 1, SHEET 7.
3. ALL MULL CLIP INSTALLATION ANCHORS MUST BE MADE OF OR PROTECTED WITH A CORROSION RESISTANT MATERIAL OR COATING. DISSIMILAR METALS OR MATERIALS IN CONTACT WITH PRESSURE TREATED WOOD MUST BE PROTECTED TO PREVENT REACTION.
4. INSTALLATION ANCHORS SHALL BE IN ACCORDANCE WITH ANCHOR MANUFACTURER'S INSTALLATION INSTRUCTIONS, AND ANCHORS SHALL NOT BE USED IN SUBSTRATES WITH STRENGTHS LESS THAN THE MINIMUM SPECIFIED IN TABLE 1, SHEET 7.
5. ANCHOR EMBEDMENT TO SUBSTRATE SHALL BE BEYOND WALL DRESSING OR STUCCO. FOR CONCRETE/CMU OPENINGS, EMBEDMENT SHALL BE BEYOND WOOD BUCKS, IF USED, INTO SUBSTRATE - 1X BUCKS ARE OPTIONAL.
6. A MINIMUM CENTER-TO-CENTER SPACING SHALL BE MAINTAINED AS INDICATED BY THE PRE-DRILLED HOLES AS SHOWN IN THE CLIP LAYOUTS ON SHEET 4.
7. WOOD OR MASONRY OPENINGS, BUCKS AND BUCK FASTENERS SHALL BE PROPERLY DESIGNED BY THE ARCHITECT OR ENGINEER OF RECORD AND INSTALLED TO TRANSFER WIND LOADS TO THE STRUCTURE. SUBSTRATES SHALL MEET THE MINIMUM STRENGTH REQUIREMENTS AS SHOWN IN TABLE 1, SHEET 7. CONCRETE AND MASONRY SUBSTRATES MAY NOT BE CRACKED.
8. SEALING AND FLASHING STRATEGIES FOR OVERALL WATER RESISTANCE OF INSTALLATION SHALL BE DONE BY OTHERS FOLLOWING THE CURRENT VERSION OF THE REFERENCE DOCUMENTS: FMA/AAMA 100(FIN WINDOWS), FMA/AAMA 200(FLANGE WINDOWS), FMA/WDMA 250(BOX WINDOWS), FMA/AAMA/WDMA 300(EXTERIOR DOORS)



1900 SW 44TH AVE.
OCALA, FLORIDA 34474
WWW.CWS.CC

**2" ALUM.
MULL BAR
NON-IMPACT**

PROPRIETARY AND CONFIDENTIAL
THE INFORMATION CONTAINED IN
THIS DRAWING IS THE SOLE
PROPERTY OF CUSTOM WINDOW
SYSTEMS, INC. ANY
REPRODUCTION IN PART OR AS A
WHOLE WITHOUT THE WRITTEN
PERMISSION OF CUSTOM WINDOW
SYSTEMS, INC IS PROHIBITED.

FLORIDA APPROVAL NO.:

5777



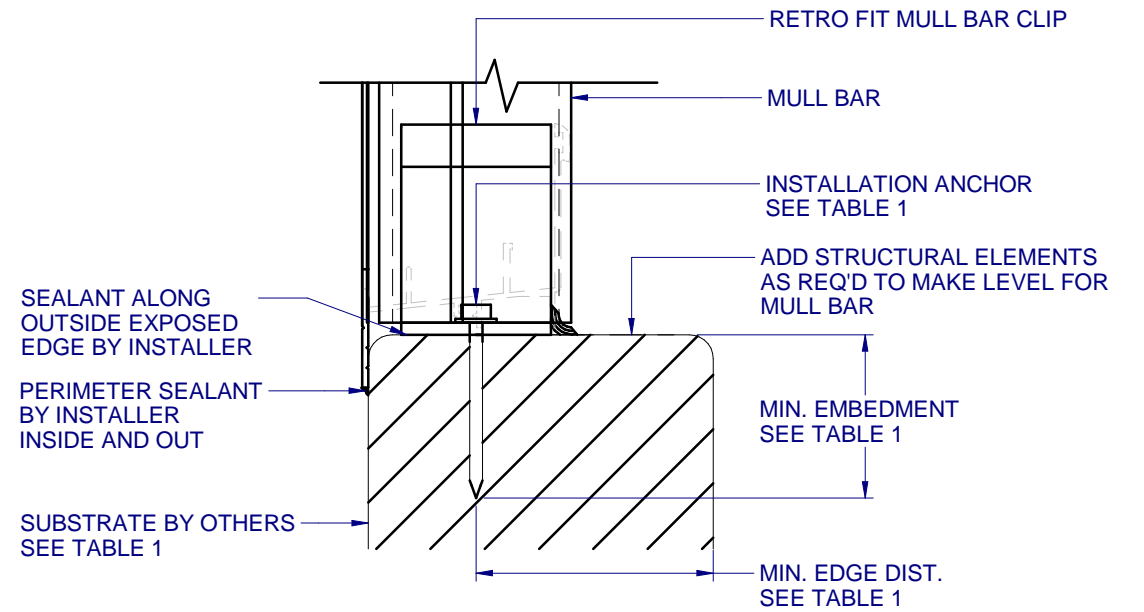
9/14/2023

LUCAS A. TURNER, P.E.
FL PE # 58201
Turner Engineering &
Consulting, Inc.
2428 Old Natchez Trc Trl
Camden, TN 38320
PH. 941-380-1574

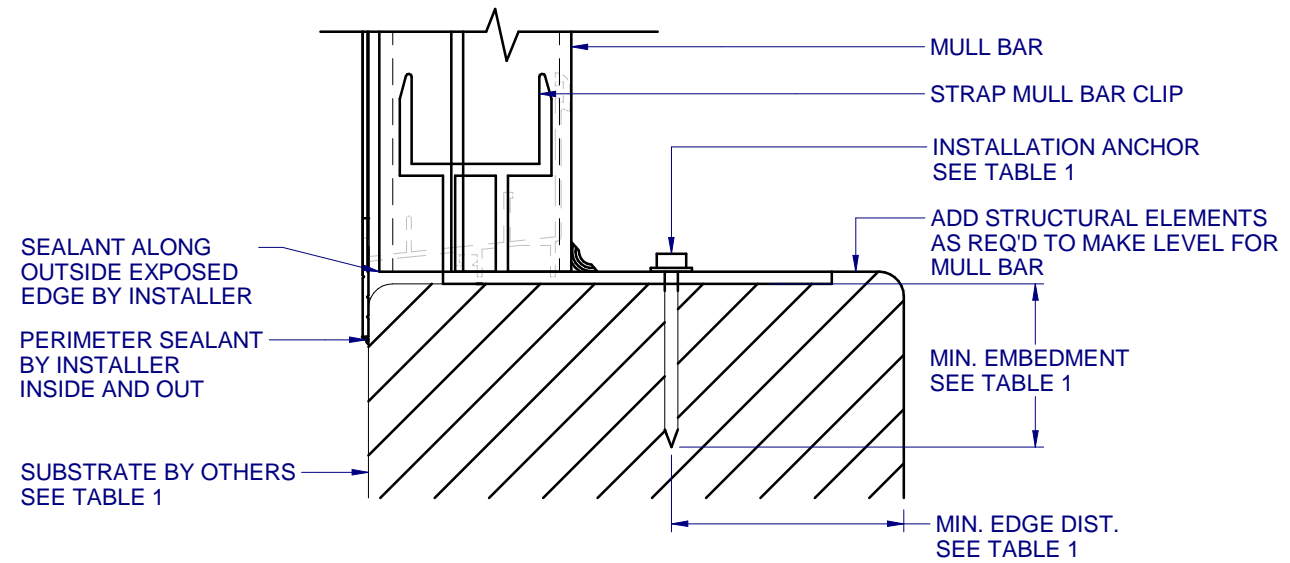
SHEET DESCRIPTION:

INSTALLATION DETAILS

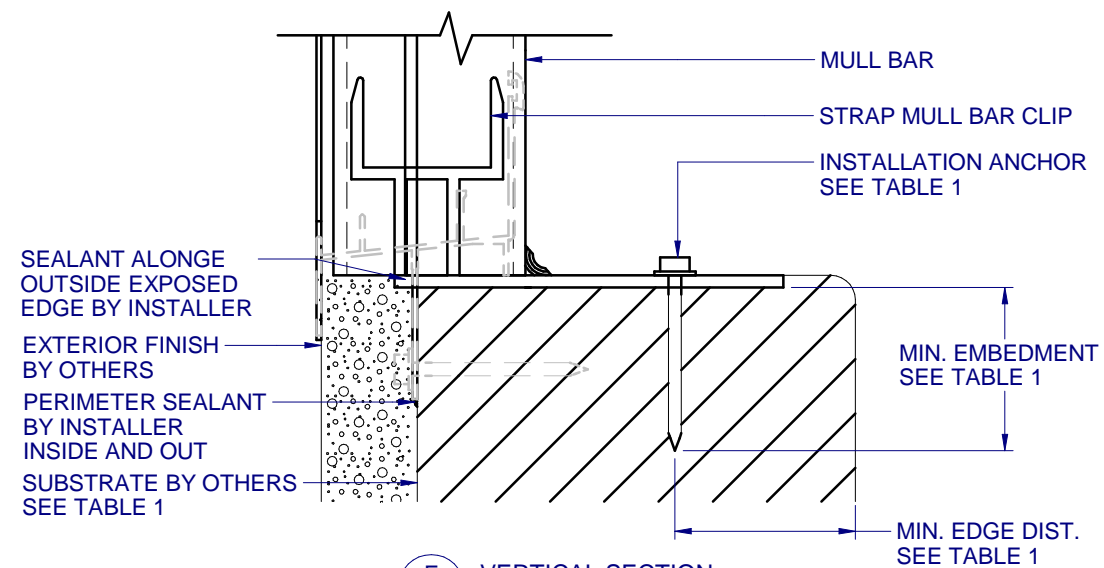
DRAWN BY:	DATE:
MCS	9/7/2023
DWG #:	REV.:
CWS-245	E
SCALE:	SHEET
1:2	7 OF 7



D VERTICAL SECTION
7 TYPICAL FLANGE (RETRO FIT) ANCHORAGE
HEAD AND JAMBS SIMILAR FOR FLANGE INSTALLATION



E VERTICAL SECTION
7 TYPICAL FLANGE (STRAP CLIP) ANCHORAGE
HEAD AND JAMBS SIMILAR FOR FLANGE INSTALLATION



F VERTICAL SECTION
7 TYPICAL FIN ANCHORAGE
HEAD AND JAMBS SIMILAR FOR FIN INSTALLATION

TABLE 1: APPROVED MULL CLIP INSTALLATION FASTENERS

SUBSTRATE TYPE	ANCHOR TYPE	MIN. EMBEDMENT	MIN. EDGE DIST.
CONCRETE (2.0 KSI MIN.)	3/16" ITW TAPCON	1"	3"
CONCRETE (3.05 KSI MIN.)	3/16" DEWALT ULTRACON+	1-3/4"	1"
HOLLOW or GROUT-FILLED CMU (ASTM C-90) or SINGLE ANCHOR IN CLIP 1559 IN CONCRETE (3.05 KSI MIN.)	1/4" DEWALT ULTRACON+	1-3/4"	2-1/2"
2X MIN. SOUTHERN PINE (G=0.55)	3/16" ITW TAPCON OR DEWALT ULTRACON+	1-3/8"	7/8"
2X MIN. SOUTHERN PINE (G=0.55)	#10 WOOD SCREW	1-3/8"	7/8"
16 GAUGE (0.060") MIN. STEEL STUD (33 KSI YIELD MIN)	#10-16 HILTI KWIK-FLEX OR ITW TEKS SELF-DRILLING SCREW	FULL THREAD THRU 0.060"	7/16"
1/8" ALUM. (6063-T5 MIN.) OR 1/8" STEEL (33 KSI MIN.)	#10 GRADE 5 SELF-TAPPING / DRILLING SCREW	FULL THREAD THRU 0.125"	7/16"

NOTES:

1. BOX FRAME MULL INSTALLATION SIMILAR TO FLANGE FRAME.
2. SILL STOOL MUST BE FLUSH AGAINST INSIDE OF MULLED WINDOWS AFTER INSTALLATION.
3. RECESS RETRO MULLION CLIP 3/8" MAX. FOR CLEARANCE OF WINDOW UNIT AS NEEDED.
4. TWO (2) ANCHORS REQUIRED PER "T" MULL CLIP, SEE SHEET 2. ONE (1) ANCHOR REQUIRED PER STRAP MULL BAR CLIP, SEE SHEET 3.
5. SEAT MULLION TIGHT TO MULL CLIP.
6. FOR ANCHORAGE DETAILS FOR THE WINDOW, REFER TO THE WINDOW SPECIFIC INSTALLATION DETAILS.