

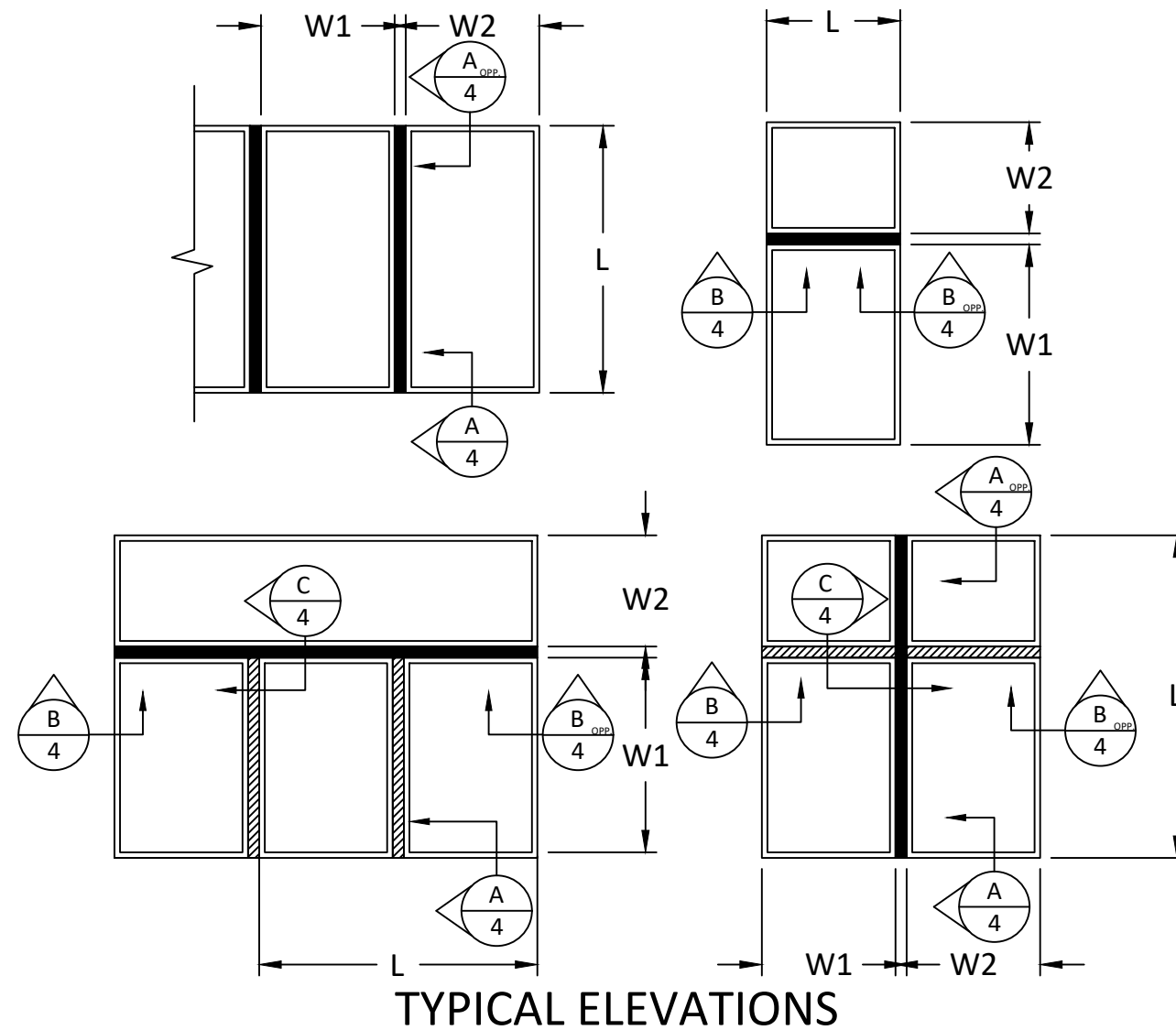
AMERICAN CRAFTSMAN WINDOWS PLY GEM WINDOWS SILVER LINE WINDOWS AND DOORS

SERIES 2723 (PART #230295), 2724, 2728 (PART #230296) STRUCTURAL BEAM MULLION (HVHZ) (IMPACT)

GENERAL NOTES:

1. THE PRODUCT SHOWN HEREIN IS DESIGNED AND MANUFACTURED TO COMPLY WITH THE CURRENT FLORIDA BUILDING CODE (FBC), **INCLUDING** HVHZ AND HAS BEEN EVALUATED ACCORDING TO THE FOLLOWING:
TAS 203-94
TAS 202-94
TAS 201-94
ASTM E330-14
2. ADEQUACY OF THE EXISTING STRUCTURAL CONCRETE/MASONRY AND 2X FRAMING AS A MAIN WIND FORCE RESISTING SYSTEM CAPABLE OF WITHSTANDING AND TRANSFERRING APPLIED PRODUCT LOADS TO THE FOUNDATION IS THE RESPONSIBILITY OF THE ENGINEER OR ARCHITECT OF RECORD FOR THE PROJECT OF INSTALLATION.
3. 1X AND 2X BUCKS (WHEN USED) SHALL BE DESIGNED AND ANCHORED TO PROPERLY TRANSFER ALL LOADS TO THE STRUCTURE. BUCK DESIGN AND INSTALLATION IS THE RESPONSIBILITY OF THE ENGINEER OR ARCHITECT OF RECORD FOR THE PROJECT OF INSTALLATION.
4. THE INSTALLATION DETAILS DESCRIBED HEREIN ARE GENERIC AND MAY NOT REFLECT ACTUAL CONDITIONS FOR A SPECIFIC SITE. IF SITE CONDITIONS CAUSE INSTALLATION TO DEVIATE FROM THE REQUIREMENTS DETAILED HEREIN, A LICENSED ENGINEER OR ARCHITECT SHALL PREPARE SITE SPECIFIC DOCUMENTS FOR USE WITH THIS DOCUMENT IN NON-HVHZ AREAS. IN HVHZ AREAS, ONE TIME PRODUCT APPROVAL TO BE OBTAINED FROM MIAMI-DADE RER.
5. MULLION & CLIP MATERIAL: ALUMINUM 6063-T6
6. MULLIONS MAY BE USED WITH ANY APPROVED FENESTRATION PRODUCT, UNDER SEPARATE APPROVAL.
7. SEE SHEETS 5-16 FOR INSTALLATION ANCHOR REQUIREMENTS FOR SPECIFIC ANCHORING REQUIREMENTS, MULLION CONFIGURATIONS, AND DESIGN LOAD CAPACITIES.
8. IN ACCORDANCE WITH THE CURRENT FBC CH20 DISSIMILAR METALS INCLUDING FASTENERS THAT MAY COME INTO CONTACT WITH ALUMINUM UNIT FRAMING SHALL BE PROTECTED.
9. WHEN USED IN AREAS REQUIRING WIND BORNE DEBRIS PROTECTION THIS PRODUCT COMPLIES WITH CHAPTER 16 OF THE CURRENT FLORIDA BUILDING CODE AND DOES NOT REQUIRE AN IMPACT RESISTANT COVERING.

TABLE OF CONTENTS		
SHEET	REVISION	SHEET DESCRIPTION
1	D	GENERAL NOTES AND TYPICAL ELEVATIONS
2	D	MULLIONS CROSS SECTIONS
3	D	ANCHOR CLIP CONFIGURATIONS
4	D	VERTICAL SECTIONS & ANCHOR SCHEDULES
5	D	ANCHOR LOAD TABLES FOR 2723 (PART #230295) ONE-WAY MULLION
6	D	ANCHOR LOAD TABLES FOR 2723 (PART #230295) ONE-WAY MULLION-CMU ONLY
7	D	ANCHOR LOAD TABLES FOR 2723 (PART #230295) TWO-WAY MULLION
8	D	ANCHOR LOAD TABLES FOR 2723 (PART #230295) TWO-WAY MULLION-CMU ONLY
9	D	ANCHOR LOAD TABLES FOR 2724 ONE-WAY MULLION
10	D	ANCHOR LOAD TABLES FOR 2724 ONE-WAY MULLION-CMU ONLY
11	D	ANCHOR LOAD TABLES FOR 2724 TWO-WAY MULLION
12	D	ANCHOR LOAD TABLES FOR 2724 TWO-WAY MULLION-CMU ONLY
13	D	ANCHOR LOAD TABLES FOR 2728 (PART #230296) ONE-WAY MULLION
14	D	ANCHOR LOAD TABLES FOR 2728 (PART #230296) ONE-WAY MULLION-CMU ONLY
15	D	ANCHOR LOAD TABLES FOR 2728 (PART #230296) TWO-WAY MULLION
16	D	ANCHOR LOAD TABLES FOR 2728 (PART #230296) TWO-WAY MULLION-CMU ONLY



- INSTRUCTIONS:**
1. DETERMINE REQUIRED DESIGN PRESSURE FOR OPENING.
 2. CHOOSE A MULLION THAT PROPERLY FITS THE FENESTRATION PRODUCT.
 3. DETERMINE WHETHER ASSEMBLY REQUIRES ONE-WAY OR TWO-WAY MULLIONS:
 - ASSEMBLIES CONSISTING OF STACKED OR SIDE-BY-SIDE UNITS REQUIRE USE OF ONE-WAY MULLIONS.
 - ASSEMBLIES CONSISTING OF MULTIPLE UNITS MULLED TOGETHER WITH MULTIPLE MULLIONS REQUIRE USE OF TWO-WAY MULLIONS.
 4. VERIFY THAT MULLION DESIGN PRESSURE MEETS OR EXCEEDS REQUIRED DESIGN PRESSURE OF OPENING USING CHARTS ON SHEETS 6-16.
 5. QUALIFIED CLIP TYPES APPEAR ON SHEETS 3 & 4. MULTIPLE ANCHOR TYPE/SUBSTRATE/CLIP COMBINATIONS WITHIN AN OPENING ARE ALLOWED.
 6. THE LESSER DESIGN PRESSURE OR MULLION OR FENESTRATION PRODUCT WILL GOVERN OVERALL ASSEMBLY DESIGN PRESSURE RATING.

AMERICAN CRAFTSMAN WINDOWS
PLY GEM WINDOWS
SILVER LINE WINDOWS AND DOORS

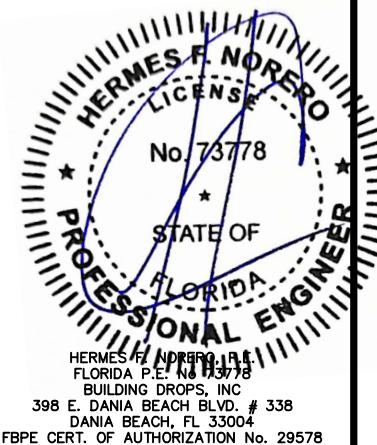
ONE SILVERLINE DRIVE
NORTH BRUNSWICK, NJ 08902
PH: (888) 741-0354

TITLE: SERIES 2723 (PART #230295),
2724, 2728 (PART #230296)
(HVHZ) STRUCTURAL BEAM
MULLION (HVHZ) (IMPACT)
GENERAL AND INSTALLATION NOTES

PREPARED BY: BUILDING DROPS, INC.
398 E. DANIA BEACH BLVD., STE. 338
DANIA BEACH, FL 33004
PH: (954)399-8478
FAX: (954)744-4738
WEB: www.buildingdrops.com

REMARKS	BY	DATE
6TH FBC EDITION	AG	10/17
ELEVATIONS UPDATED	SM	6/19
7th FBC EDITION	LH	10/20
8th FBC EDITION	LH	09/23

THE INSTALLATION DETAILS DESCRIBED HEREIN ARE GENERIC AND MAY NOT REFLECT ACTUAL CONDITIONS FOR A SPECIFIC SITE. IF SITE CONDITIONS CAUSE INSTALLATION TO DEVIATE FROM THE REQUIREMENTS DETAILED HEREIN, A LICENSED ENGINEER OR ARCHITECT SHALL PREPARE SITE SPECIFIC DOCUMENTS FOR USE WITH THIS DOCUMENT.



FL #: **FL 6067**

DATE: **02/11/19**

DWG. BY: **HR** CHK. BY: **HFN**

SCALE: **NTS**

DWG. #: **SWD015**

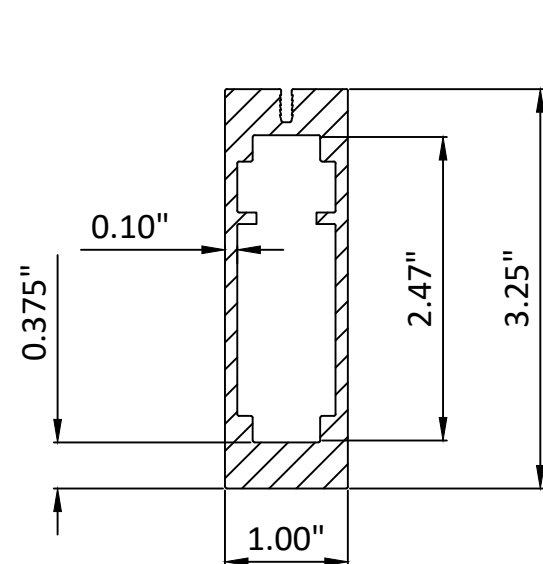
SHEET **1** OF 16

AMERICAN CRAFTSMAN WINDOWS
PLY GEM WINDOWS
SILVER LINE WINDOWS AND DOORS

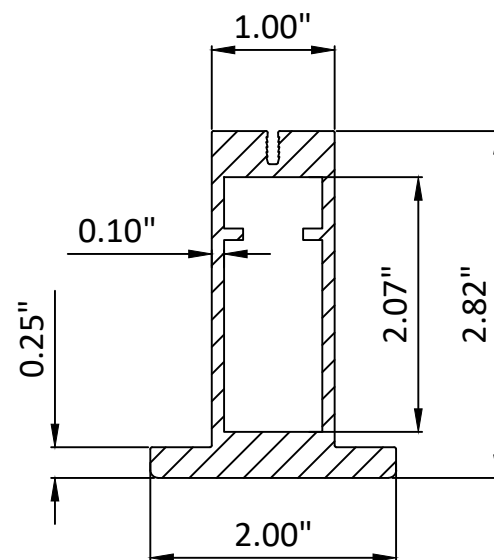
ONE SILVERLINE DRIVE
NORTH BRUNSWICK, NJ 08902
PH: (888) 741-0354

TITLE:
SERIES 2723 (PART #230295),
2724, 2728 (PART #230296)
(HVHZ) STRUCTURAL BEAM
MULLION (HVHZ) (IMPACT)
MULLIONS CROSS SECTIONS

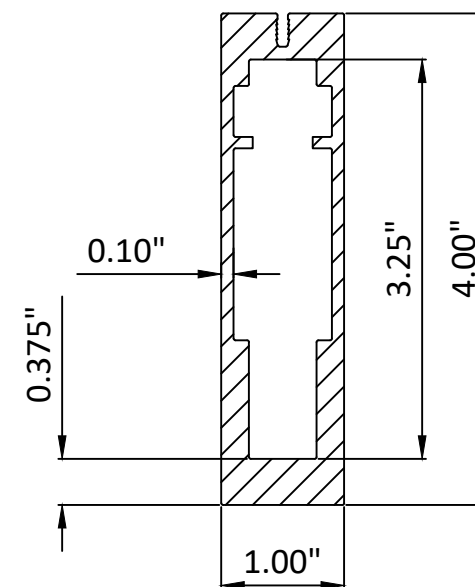
PREPARED BY:
BD
BUILDING DROPS
398 E. DANIA BEACH BLVD., STE. 338
DANIA BEACH, FL 33004
PH: (954)399-8478
FAX: (954)744-4738
WEB: www.buildingdrops.com



SERIES 2723 (PART #230295)
TUBE MULLION



SERIES 2724
TUBE MULLION



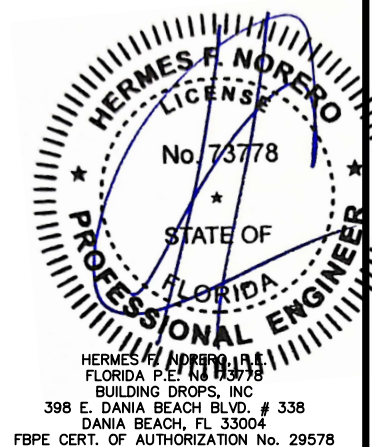
SERIES 2728 (PART #230296)
TUBE MULLION

NOTE:

1. MULLION PROFILES SHOWN ABOVE ARE OF ALUMINUM, 6063-T6 MATERIAL
2. SEE SHEET 3 FOR SPECIFIC CLIP TYPES AND DIMENSIONS.

REMARKS	BY	DATE
6TH FBC EDITION	AG	10/17
ELEVATIONS UPDATED	SM	6/19
7th FBC EDITION	LH	10/20
8th FBC EDITION	LH	09/23

THE INSTALLATION DETAILS DESCRIBED HEREIN ARE GENERIC AND MAY NOT REFLECT ACTUAL CONDITIONS FOR A SPECIFIC SITE. IF SITE CONDITIONS CAUSE INSTALLATION TO DEVIATE FROM THE REQUIREMENTS DETAILED HEREIN, A LICENSED ENGINEER OR ARCHITECT SHALL PREPARE SITE SPECIFIC DOCUMENTS FOR USE WITH THIS DOCUMENT.



FL #:
FL 6067

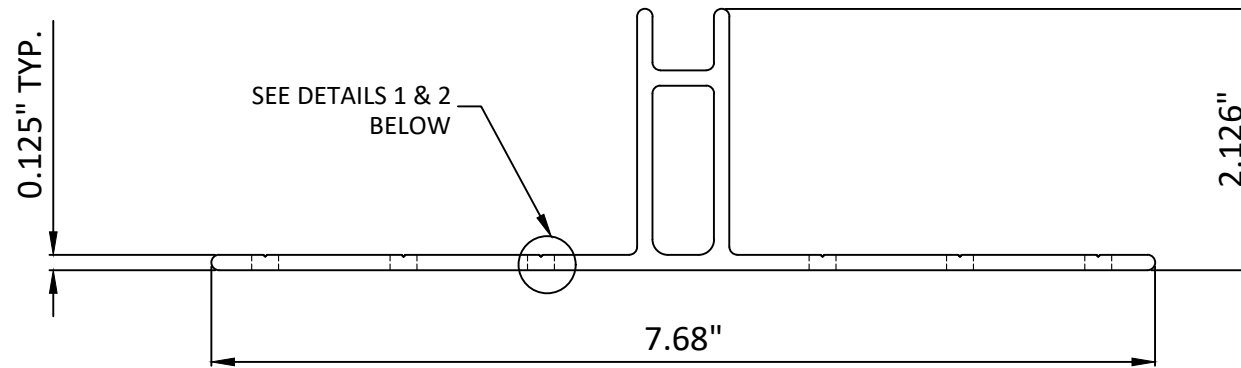
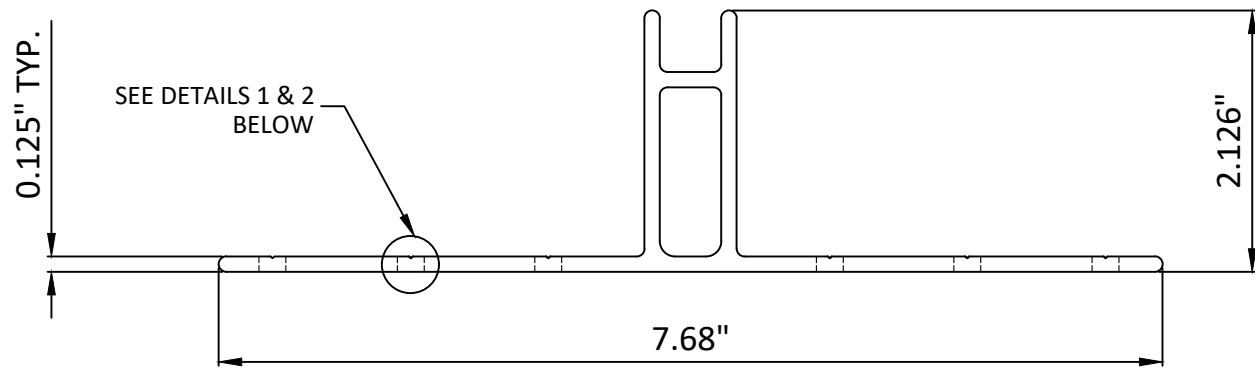
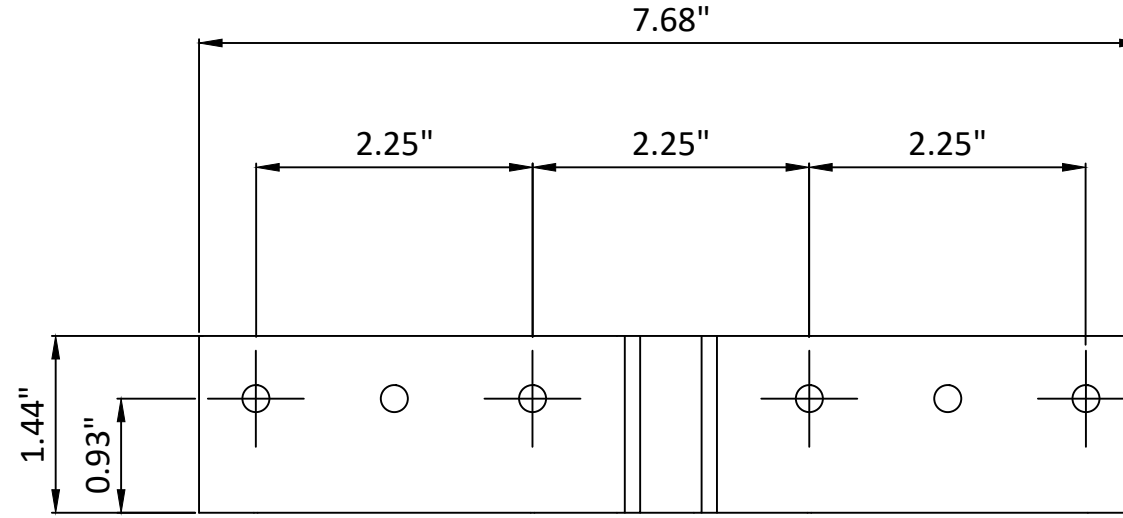
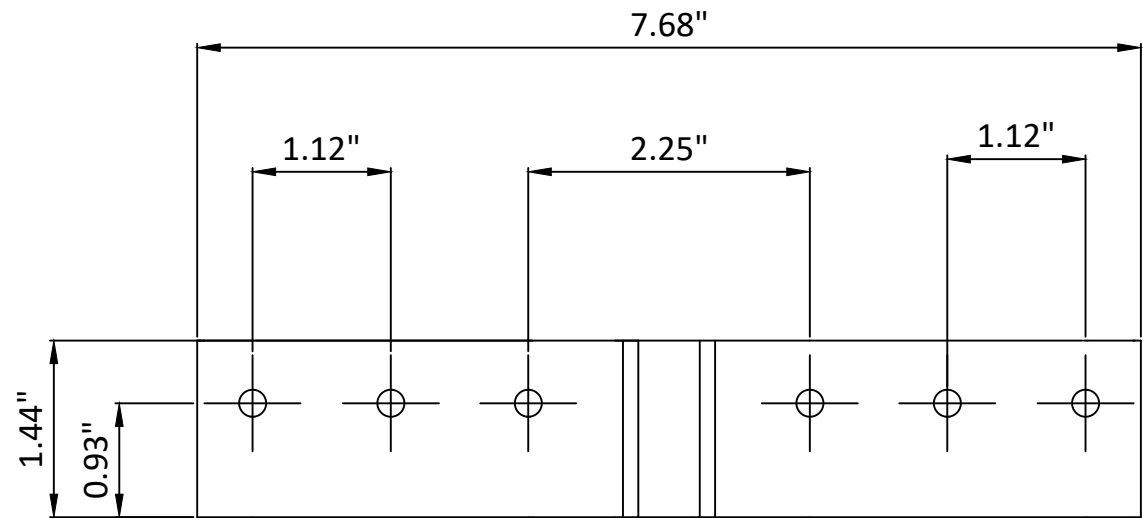
DATE: **02/11/19**

DWG. BY: **HR** CHK. BY: **HFN**

SCALE: **NTS**

DWG. #: **SWD015**

SHEET



MULLION ANCHOR BRACKET 50-2722 (PART #230297)

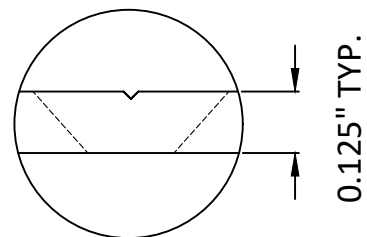
ALUMINUM (6063-T6)

(6) ANCHORS FOR WOOD SCREW OR MULLION TO MULLION ANCHORING

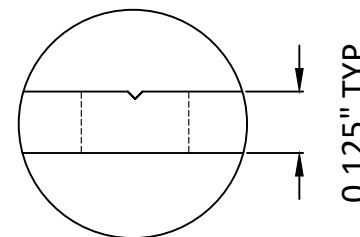
MULLION ANCHOR BRACKET 50-2722 (PART #230297)

ALUMINUM (6063-T6)

(4) ANCHORS FOR CONCRETE & CMU ANCHORING



**DETAIL 1
COUNTERSINK HOLE**



**DETAIL 2
THROUGH HOLE**

NOTE:
1. EITHER OF THE DETAILS SHOWN ABOVE CAN BE USED AS THE TYPE OF HOLE THROUGH THE MULLION ANCHOR BRACKET, AS LONG AS MIN. EDGE DISTANCE AND MIN, EMBEDMENT REQUIREMENTS ARE MET.

AMERICAN CRAFTSMAN WINDOWS
PLY GEM WINDOWS
SILVER LINE WINDOWS AND DOORS

ONE SILVERLINE DRIVE
NORTH BRUNSWICK, NJ 08902
PH: (888) 741-0354

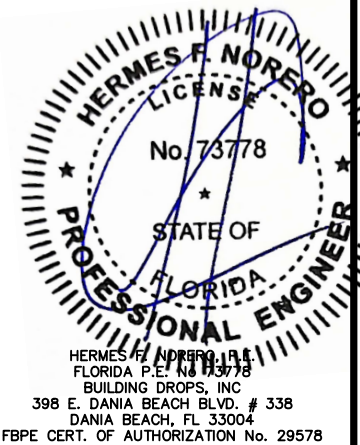
TITLE:
SERIES 2723 (PART #230295),
2724, 2728 (PART #230296)
(HVHZ) STRUCTURAL BEAM
MULLION (HVHZ) (IMPACT)
ANCHOR CLIP CONFIGURATIONS

PREPARED BY:
BUILDING DROPS, INC.
398 E. DANIA BEACH BLVD., STE. 338
DANIA BEACH, FL 33004
PH: (954)399-8478
FAX: (954)744-4738
WEB: www.buildingdrops.com



REMARKS	BY	DATE
6TH FBC EDITION	AG	10/17
ELEVATIONS UPDATED	SM	6/19
7th FBC EDITION	LH	10/20
8th FBC EDITION	LH	09/23

THE INSTALLATION DETAILS DESCRIBED HEREIN ARE GENERIC AND MAY NOT REFLECT ACTUAL CONDITIONS FOR A SPECIFIC SITE. IF SITE CONDITIONS CAUSE INSTALLATION TO DEVIATE FROM THE REQUIREMENTS DETAILED HEREIN, A LICENSED ENGINEER OR ARCHITECT SHALL PREPARE SITE SPECIFIC DOCUMENTS FOR USE WITH THIS DOCUMENT.



FL #: **FL 6067**

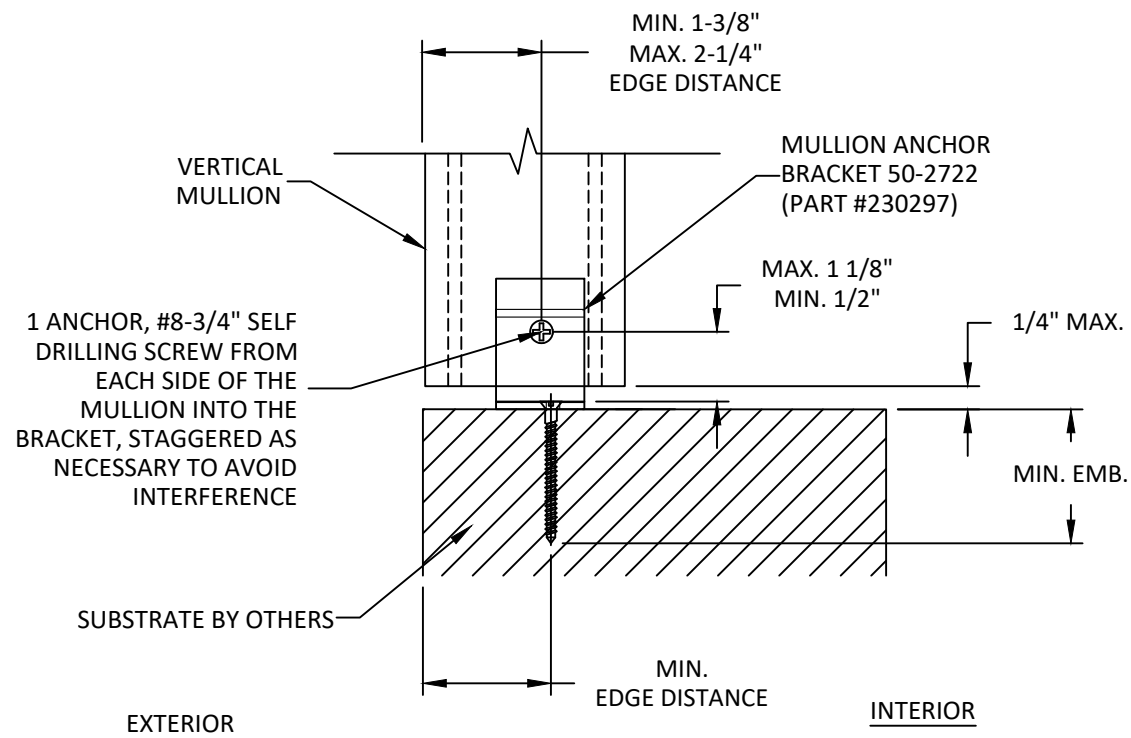
DATE: **02/11/19**

DWG. BY: **HR** | CHK. BY: **HFN**

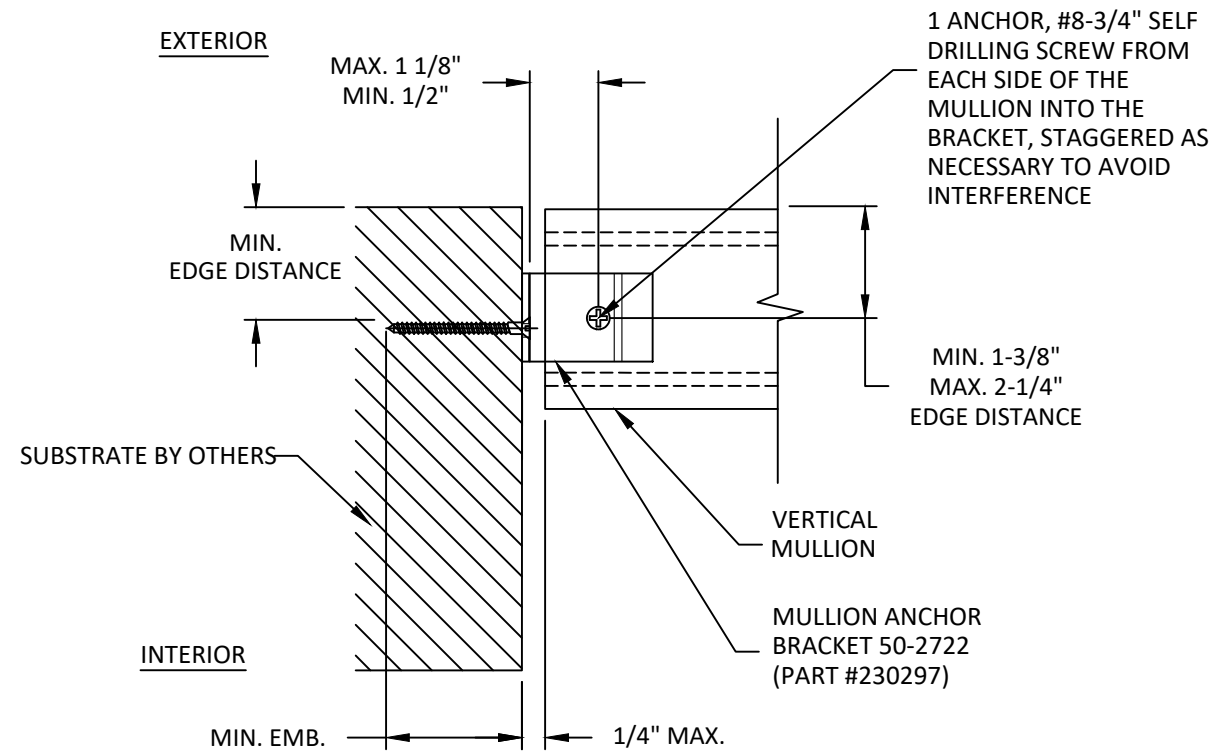
SCALE: **NTS**

DWG. #: **SWD015**

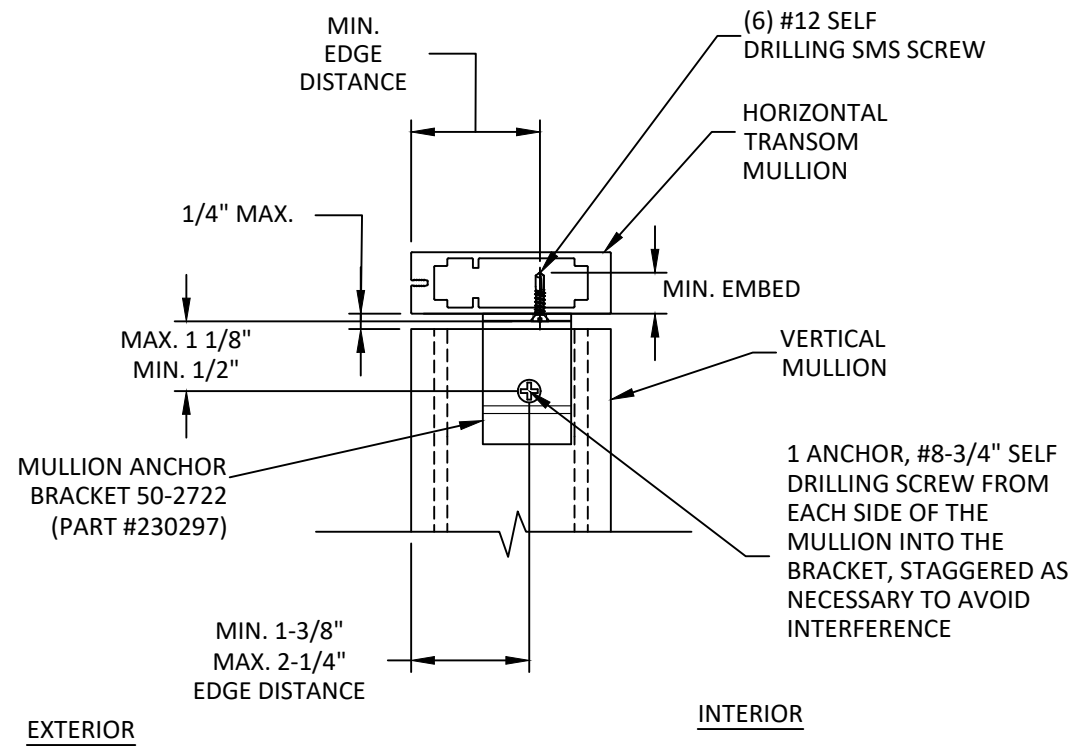
SHEET
3



A
4 ANCHOR DETAIL
MULLION ANCHOR BRACKET 50-2722 (PART #230297)



B
4 ANCHOR DETAIL
MULLION ANCHOR BRACKET 50-2722 (PART #230297)



C
4 VERTICAL SECTION
ALUMINUM MULLION
SIDE VIEW-VERTICAL

ANCHOR SCHEDULE FOR MULLIONS					
SUBSTRATE	INSTALLATION TYPE	SCREW QTY PER LOCATION	ANCHOR TYPE	EMBEDMENT (IN.)	EDGE DISTANCE (IN.)
WOOD	ANCHOR BRACKET 50-2722 (PART #230297)	6	#12 WOOD ANCHOR	1.5	0.75
CONCRETE/MASONRY	ANCHOR BRACKET 50-2722 (PART #230297)	4	1/4" Ø SIMPSON STRONG-TIE TITEN ANCHOR	1.0	2.00
ALUM. MULLION/ALUM./STEEL	ANCHOR BRACKET 50-2722 (PART #230297)	6	#12 SELF-DRILLING SMS	3 THREADS	2.00

NOTE
-HEAD, SILL AND JAMB HAVE SIMILAR DETAILS

NOTE
DETAILS SHOWN ARE TYPICAL FOR ALL MULLION & CLIP ASSEMBLIES. SEE SHEETS 5-10 FOR ALLOWABLE MULLION CONFIGURATIONS, SIZES, AND DESIGN PRESSURES.

AMERICAN CRAFTSMAN WINDOWS
PLY GEM WINDOWS
SILVER LINE WINDOWS AND DOORS

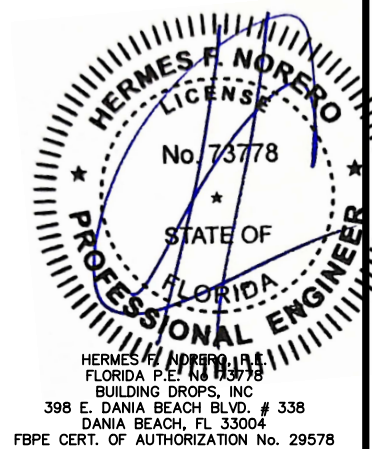
ONE SILVERLINE DRIVE
NORTH BRUNSWICK, NJ 08902
PH: (888) 741-0354

TITLE:
SERIES 2723 (PART #230295),
2724, 2728 (PART #230296)
(HVHZ) STRUCTURAL BEAM
MULLION (HVHZ) (IMPACT)
VERTICAL SECTIONS

PREPARED BY:
BUILDING DROPS, INC.
398 E. DANIA BEACH BLVD., STE. 338
DANIA BEACH, FL 33004
PH: (954)399-8478
FAX: (954)744-4738
WEB: www.buildingdrops.com

REMARKS	BY	DATE
6TH FBC EDITION	AG	10/17
ELEVATIONS UPDATED	SM	6/19
7th FBC EDITION	LH	10/20
8th FBC EDITION	LH	09/23

THE INSTALLATION DETAILS DESCRIBED HEREIN ARE GENERIC AND MAY NOT REFLECT ACTUAL CONDITIONS FOR A SPECIFIC SITE. IF SITE CONDITIONS CAUSE INSTALLATION TO DEVIATE FROM THE REQUIREMENTS DETAILED HEREIN, A LICENSED ENGINEER OR ARCHITECT SHALL PREPARE SITE SPECIFIC DOCUMENTS FOR USE WITH THIS DOCUMENT.



FL #: **FL 6067**

DATE: **02/11/19**

DWG. BY: **HR** CHK. BY: **HFN**

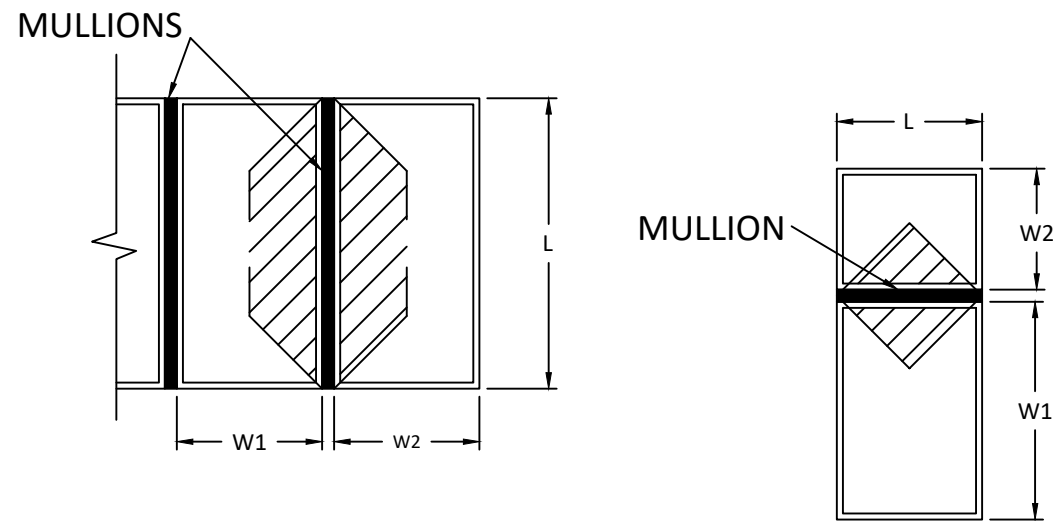
SCALE: **NTS**

DWG. #: **SWD015**

SHEET

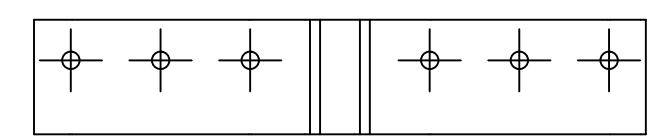
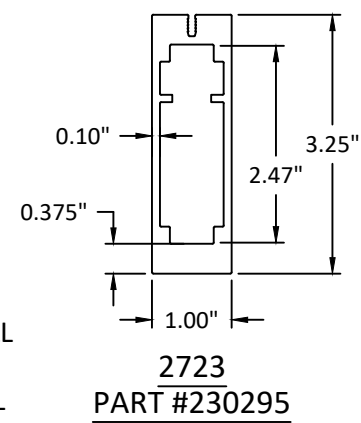
MAXIMUM DESIGN PRESSURE CAPACITY CHART (PSF): 2723 STRUCTURAL MULLIONS (ONE-WAY CONFIGURATIONS) - INSTALLATION TO WOOD, CONCRETE, ALUMINUM, OR STEEL

L - MULL LENGTH (IN)	W - TRIBUTARY WIDTH (IN)																		
	18.0	20.0	22.0	24.0	26.0	28.0	30.0	32.0	34.0	36.0	38.0	40.0	42.0	44.0	46.0	48.0	50.0	52.0	54.0
60.0	100.0	100.0	100.0	100.0	100.0	100.0	100.0	100.0	100.0	100.0	100.0	100.0	100.0	100.0	100.0	100.0	100.0	100.0	100.0
62.0	100.0	100.0	100.0	100.0	100.0	100.0	100.0	100.0	100.0	100.0	100.0	100.0	100.0	100.0	100.0	100.0	100.0	100.0	100.0
64.0	100.0	100.0	100.0	100.0	100.0	100.0	100.0	100.0	100.0	100.0	100.0	100.0	100.0	100.0	100.0	100.0	100.0	100.0	100.0
66.0	100.0	100.0	100.0	100.0	100.0	100.0	100.0	100.0	100.0	100.0	100.0	100.0	100.0	100.0	100.0	100.0	100.0	100.0	100.0
68.0	100.0	100.0	100.0	100.0	100.0	100.0	100.0	100.0	100.0	100.0	100.0	100.0	100.0	100.0	99.2	96.8	94.7	92.9	91.4
70.0	100.0	100.0	100.0	100.0	100.0	100.0	100.0	100.0	100.0	100.0	100.0	98.9	95.5	92.5	89.9	87.7	85.7	83.9	82.4
72.0	100.0	100.0	100.0	100.0	100.0	100.0	100.0	100.0	100.0	97.7	93.7	90.2	87.0	84.3	81.8	79.6	77.7	76.1	74.6
74.0	100.0	100.0	100.0	100.0	100.0	100.0	100.0	98.7	93.8	89.5	85.8	82.5	79.5	76.9	74.6	72.6	70.8	69.2	67.8

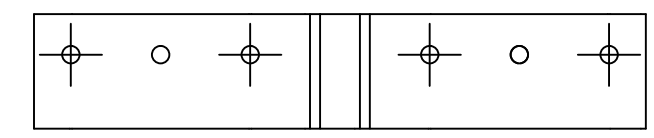


ONE-WAY MULLION DIAGRAMS

QUALIFIED ANCHOR CLIPS



MULLION ANCHOR BRACKET 50-2722 (PART #230297)
ALUMINUM (6063-T6)
FOR WOOD SCREW OR MULLION TO MULLION ANCHORING



MULLION ANCHOR BRACKET 50-2722 (PART #230297)
ALUMINUM (6063-T6)
FOR CONCRETE ANCHORING

AMERICAN CRAFTSMAN WINDOWS
PLY GEM WINDOWS
SILVER LINE WINDOWS AND DOORS

ONE SILVERLINE DRIVE
NORTH BRUNSWICK, NJ 08902
PH: (888) 741-0354

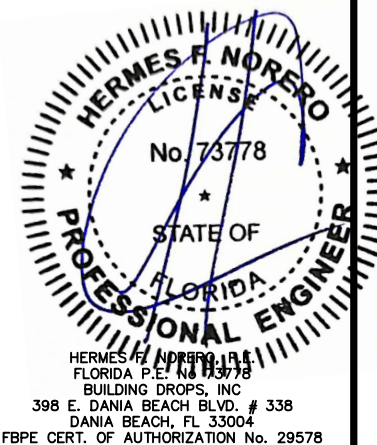
TITLE: SERIES 2723 (PART #230295), 2724, 2728 (PART #230296) (HVHZ) STRUCTURAL BEAM MULLION (HVHZ) (IMPACT) 2723 MULLION LOAD TABLES

PREPARED BY: BUILDING DROPS, INC.
398 E. DANIA BEACH BLVD., STE. 338
DANIA BEACH, FL 33004
PH: (954) 399-8478
FAX: (954) 744-4738
WEB: www.buildingdrops.com



REMARKS	BY	DATE
6TH FBC EDITION	AG	10/17
ELEVATIONS UPDATED	SM	6/19
7th FBC EDITION	LH	10/20
8th FBC EDITION	LH	09/23

THE INSTALLATION DETAILS DESCRIBED HEREIN ARE GENERIC AND MAY NOT REFLECT ACTUAL CONDITIONS FOR A SPECIFIC SITE. IF SITE CONDITIONS CAUSE INSTALLATION TO DEVIATE FROM THE REQUIREMENTS DETAILED HEREIN, A LICENSED ENGINEER OR ARCHITECT SHALL PREPARE SITE SPECIFIC DOCUMENTS FOR USE WITH THIS DOCUMENT.



FL #: **FL 6067**

DATE: **02/11/19**

DWG. BY: **HR** CHK. BY: **HFN**

SCALE: **NTS**

DWG. #: **SWD015**

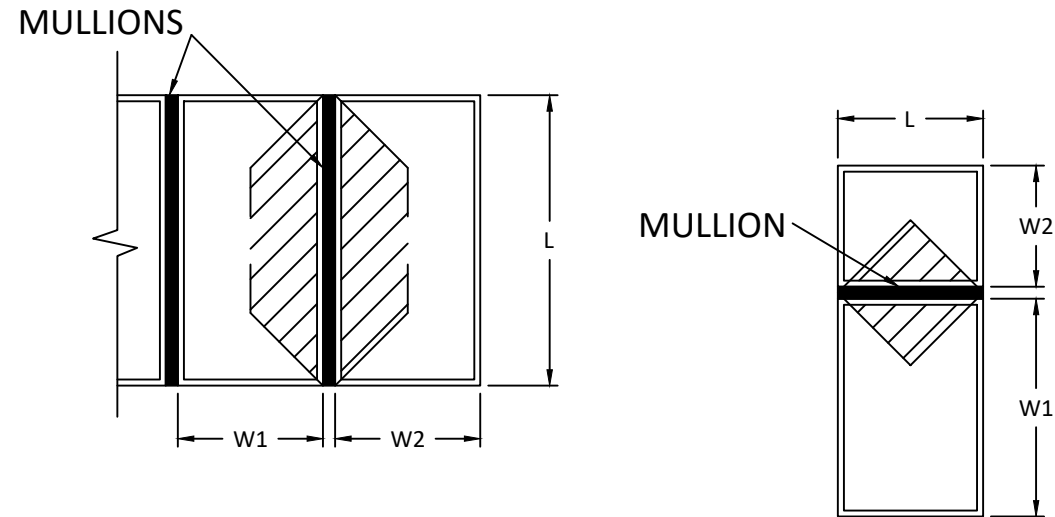
SHEET **5** OF 16

TABLE NOTES:

- SEE SHEET 1 FOR INSTRUCTIONS ON USING TABLES. SEE SHEET 4 FOR TYPICAL INSTALLATION METHODS & CLIP DETAILS.
- LINEAR INTERPOLATION BETWEEN LISTED WIDTHS AND SPANS IS ALLOWED.
- SEE THIS SHEET FOR SPECIFIC MULLION DIMENSIONS.
- SEE SHEET 3 FOR SPECIFIC BRACKET DIMENSIONS.
- ANCHOR REQUIREMENTS:
 - WOOD: #12 WOOD SCREWS
 - CONCRETE: 1/4" SIMPSON STRONG-TIE TITEN ANCHOR
 - METAL: #12 SELF-DRILLING SCREWS (GRADE 5)
- INSTALLATION SUBSTRATES:
 - WOOD ANCHORS SHALL HAVE A MIN. EMBEDMENT OF 1-1/2" & EDGE DISTANCE OF 0.75". WOOD SHALL BE MIN. S.G.=0.55.
 - CONCRETE ANCHORS SHALL HAVE A MIN. EMBEDMENT OF 1-3/4" & EDGE DISTANCE OF 2". CONCRETE SHALL BE MIN. 4000 PSI.
 - METAL ANCHORS SHALL HAVE A MIN. (3) THREADS PENETRATION BEYOND METAL STRUCTURE. STEEL SHALL BE MIN. 18 GA. (0.045" THICK) 33 KSI YIELD & ALUMINUM SHALL BE MIN. 0.1" THICK ALUMINUM 6063-T6. WITH MIN. EDGE DISTANCE OF 1" FOR BOTH ALUM. AND STEEL.
- FOR MULL LENGTHS SHORTER THAN 60" USE VALUES FOR 60" LENGTH.
- DEFLECTIONS HAS BEEN LIMITED TO L/180.

MAXIMUM DESIGN PRESSURE CAPACITY CHART (PSF): 2723 STRUCTURAL MULLIONS (ONE-WAY CONFIGURATIONS) - INSTALLATION TO CMU

L - MULL LENGTH (IN)	W - TRIBUTARY WIDTH (IN)																		
	18.0	20.0	22.0	24.0	26.0	28.0	30.0	32.0	34.0	36.0	38.0	40.0	42.0	44.0	46.0	48.0	50.0	52.0	54.0
60.0	100.0	100.0	100.0	100.0	100.0	100.0	100.0	100.0	100.0	100.0	100.0	100.0	100.0	100.0	100.0	100.0	100.0	100.0	100.0
62.0	100.0	100.0	100.0	100.0	100.0	100.0	100.0	100.0	100.0	100.0	100.0	100.0	100.0	100.0	100.0	100.0	100.0	100.0	100.0
64.0	100.0	100.0	100.0	100.0	100.0	100.0	100.0	100.0	100.0	100.0	100.0	100.0	100.0	100.0	100.0	100.0	100.0	100.0	100.0
66.0	100.0	100.0	100.0	100.0	100.0	100.0	100.0	100.0	100.0	100.0	100.0	100.0	100.0	100.0	100.0	100.0	100.0	100.0	100.0
68.0	100.0	100.0	100.0	100.0	100.0	100.0	100.0	100.0	100.0	100.0	100.0	100.0	100.0	100.0	99.2	96.8	94.7	92.9	91.4
70.0	100.0	100.0	100.0	100.0	100.0	100.0	100.0	100.0	100.0	100.0	100.0	98.9	95.5	92.5	89.9	87.7	85.7	83.9	82.4
72.0	100.0	100.0	100.0	100.0	100.0	100.0	100.0	100.0	100.0	97.7	93.7	90.2	87.0	84.3	81.8	79.6	77.7	76.1	74.6
74.0	100.0	100.0	100.0	100.0	100.0	100.0	100.0	98.7	93.8	89.5	85.8	82.5	79.5	76.9	74.6	72.6	70.8	69.2	67.8

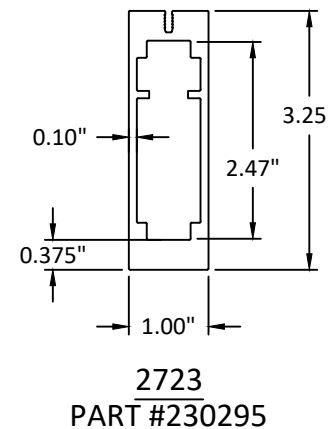


$$\text{TRIBUTARY WIDTH} = \frac{W1+W2}{2}$$

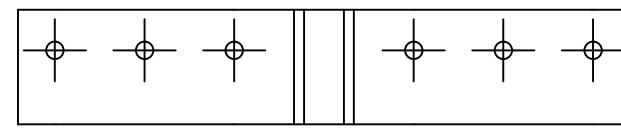
ONE-WAY MULLION DIAGRAMS

TABLE NOTES:

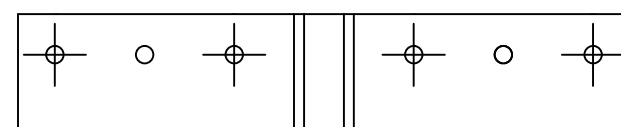
- SEE SHEET 1 FOR INSTRUCTIONS ON USING TABLES. SEE SHEET 4 FOR TYPICAL INSTALLATION METHODS & CLIP DETAILS.
- LINEAR INTERPOLATION BETWEEN LISTED WIDTHS AND SPANS IS ALLOWED.
- SEE THIS SHEET FOR SPECIFIC MULLION DIMENSIONS.
- SEE SHEET 3 FOR SPECIFIC BRACKET DIMENSIONS.
- ANCHOR REQUIREMENTS:
 - CMU: 1/4" SIMPSON STRONG-TIE TITEN ANCHOR
- INSTALLATION SUBSTRATES:
 - HOLLOW CMU ANCHORS SHALL HAVE A MIN. EMBEDMENT OF 1" & EDGE DISTANCE OF 2". HOLLOW CMU SHALL BE MEDIUM WEIGHT CONFORMING TO ASTM C 90.
- FOR MULL LENGTHS SHORTER THAN 60" USE VALUES FOR 60" LENGTH.
- DEFLECTIONS HAS BEEN LIMITED TO L/180.



QUALIFIED ANCHOR CLIPS



**MULLION ANCHOR BRACKET 50-2722 (PART #230297)
ALUMINUM (6063-T6)
FOR WOOD SCREW OR MULLION TO MULLION ANCHORING**



**MULLION ANCHOR BRACKET 50-2722 (PART #230297)
ALUMINUM (6063-T6)
FOR CMU ANCHORING**

AMERICAN CRAFTSMAN WINDOWS
PLY GEM WINDOWS
SILVER LINE WINDOWS AND DOORS

ONE SILVERLINE DRIVE
NORTH BRUNSWICK, NJ 08902
PH: (888) 741-0354

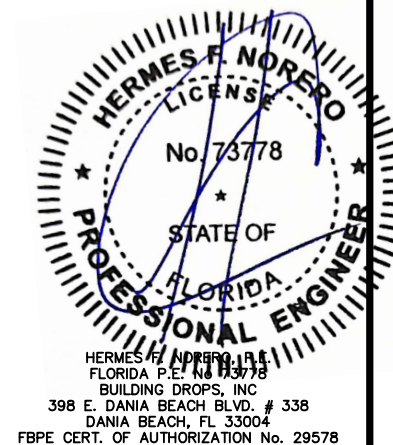
TITLE: SERIES 2723 (PART #230295),
2724, 2728 (PART #230296)
(HVHZ) STRUCTURAL BEAM
MULLION (HVHZ) (IMPACT)
2723 MULLION LOAD TABLES-CMU ONLY

PREPARED BY: BUILDING DROPS, INC.
398 E. DANIA BEACH BLVD., STE. 338
DANIA BEACH, FL 33004
PH: (954)399-8478
FAX: (954)744-4738
WEB: www.buildingdrops.com



REMARKS	BY	DATE
6TH FBC EDITION	AG	10/17
ELEVATIONS UPDATED	SM	6/19
7th FBC EDITION	LH	10/20
8th FBC EDITION	LH	09/23

THE INSTALLATION DETAILS DESCRIBED HEREIN ARE GENERIC AND MAY NOT REFLECT ACTUAL CONDITIONS FOR A SPECIFIC SITE. IF SITE CONDITIONS CAUSE INSTALLATION TO DEVIATE FROM THE REQUIREMENTS DETAILED HEREIN, A LICENSED ENGINEER OR ARCHITECT SHALL PREPARE SITE SPECIFIC DOCUMENTS FOR USE WITH THIS DOCUMENT.



FL #: **FL 6067**

DATE: **02/11/19**

DWG. BY: **HR** CHK. BY: **HFN**

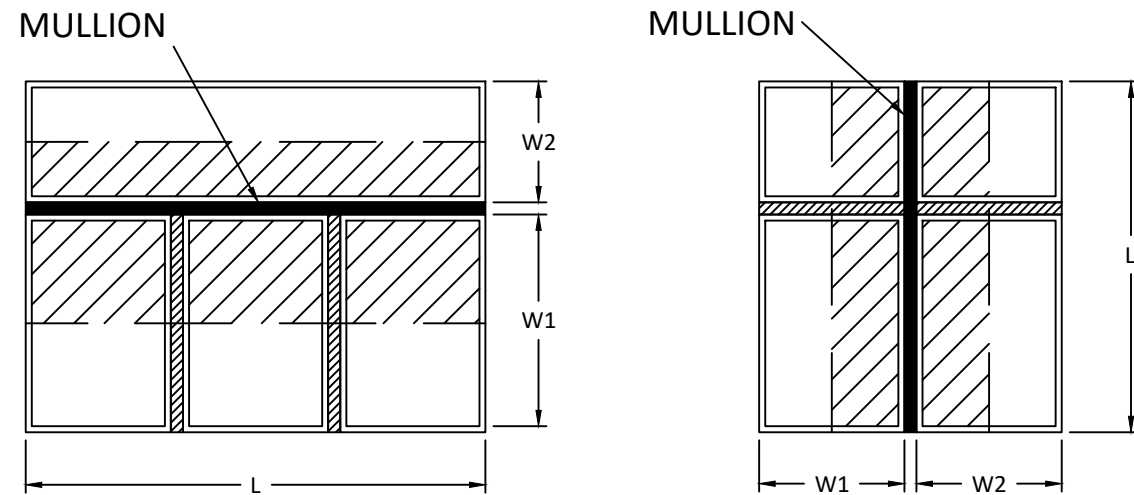
SCALE: **NTS**

DWG. #: **SWD015**

SHEET **6** OF 16

MAXIMUM DESIGN PRESSURE CAPACITY CHART (PSF): 2723 STRUCTURAL MULLIONS (TWO-WAY CONFIGURATIONS) - INSTALLATION TO WOOD, CONCRETE, ALUMINUM, OR STEEL

L - MULL LENGTH (IN)	W - TRIBUTARY WIDTH (IN)																							
	18.0	20.0	22.0	24.0	26.0	28.0	30.0	32.0	34.0	36.0	38.0	40.0	42.0	44.0	46.0	48.0	50.0	52.0	54.0	56.0	58.0	60.0	62.0	64.0
60.0	100.0	100.0	100.0	100.0	100.0	100.0	100.0	100.0	100.0	100.0	100.0	100.0	100.0	100.0	100.0	100.0	100.0	100.0	100.0	98.0	94.6	91.5	88.5	85.7
62.0	100.0	100.0	100.0	100.0	100.0	100.0	100.0	100.0	100.0	100.0	100.0	100.0	100.0	100.0	100.0	100.0	99.5	95.6	92.1	88.8	85.7	82.9	80.2	77.7
64.0	100.0	100.0	100.0	100.0	100.0	100.0	100.0	100.0	100.0	100.0	100.0	100.0	100.0	100.0	98.3	94.2	90.4	86.9	83.7	80.7	78.0	75.4	72.9	70.6
66.0	100.0	100.0	100.0	100.0	100.0	100.0	100.0	100.0	100.0	100.0	100.0	100.0	98.2	93.7	89.6	85.9	82.5	79.3	76.3	73.6	71.1	68.7	66.5	64.4
68.0	100.0	100.0	100.0	100.0	100.0	100.0	100.0	100.0	100.0	100.0	99.2	94.2	89.7	85.7	81.9	78.5	75.4	72.5	69.8	67.3	65.0	62.8	60.8	58.9
70.0	100.0	100.0	100.0	100.0	100.0	100.0	100.0	100.0	100.0	96.0	90.9	86.4	82.3	78.5	75.1	72.0	69.1	66.5	64.0	61.7	59.6	57.6	55.7	54.0
72.0	100.0	100.0	100.0	100.0	100.0	100.0	100.0	99.2	93.4	88.2	83.6	79.4	75.6	72.2	69.0	66.2	63.5	61.1	58.8	56.7	54.7	52.9	51.2	49.6
74.0	100.0	100.0	100.0	100.0	100.0	100.0	97.5	91.4	86.0	81.2	77.0	73.1	69.6	66.5	63.6	60.9	58.5	56.2	54.2	52.2	50.4	48.7	47.2	45.7

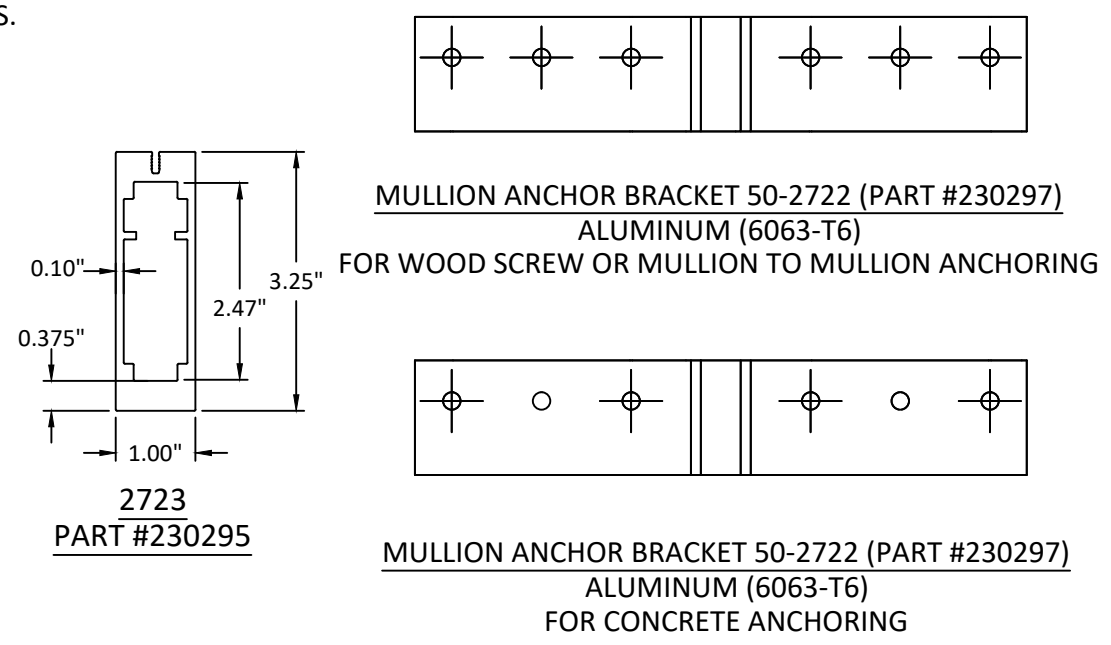


TWO-WAY MULLION DIAGRAMS

TABLE NOTES:

- SEE SHEET 1 FOR INSTRUCTIONS ON USING TABLES. SEE SHEET 4 FOR TYPICAL INSTALLATION METHODS & CLIP DETAILS.
- LINEAR INTERPOLATION BETWEEN LISTED WIDTHS AND SPANS IS ALLOWED.
- SEE THIS SHEET FOR SPECIFIC MULLION DIMENSIONS.
- SEE SHEET 3 FOR SPECIFIC BRACKET DIMENSIONS.
- ANCHOR REQUIREMENTS:
 - WOOD: #12 WOOD SCREWS
 - CONCRETE: 1/4" SIMPSON STRONG-TIE TITEN ANCHOR
 - METAL: #12 SELF-DRILLING SCREWS (GRADE 5)
- INSTALLATION SUBSTRATES:
 - WOOD ANCHORS SHALL HAVE A MIN. EMBEDMENT OF 1-1/2" & EDGE DISTANCE OF 0.75". WOOD SHALL BE MIN. S.G.=0.55.
 - CONCRETE ANCHORS SHALL HAVE A MIN. EMBEDMENT OF 1-3/4" & EDGE DISTANCE OF 2". CONCRETE SHALL BE MIN. 4000 PSI.
 - METAL ANCHORS SHALL HAVE A MIN. (3) THREADS PENETRATION BEYOND METAL STRUCTURE. STEEL SHALL BE MIN. 18 GA. (0.045" THICK) 33 KSI YIELD & ALUMINUM SHALL BE MIN. 0.1" THICK ALUMINUM 6063-T6. WITH MIN. EDGE DISTANCE OF 1" FOR BOTH ALUM. AND STEEL.
- FOR MULL LENGTHS SHORTER THAN 60" USE VALUES FOR 60" LENGTH.
- DEFLECTIONS HAS BEEN LIMITED TO L/180.

QUALIFIED ANCHOR CLIPS



AMERICAN CRAFTSMAN WINDOWS
PLY GEM WINDOWS
SILVER LINE WINDOWS AND DOORS

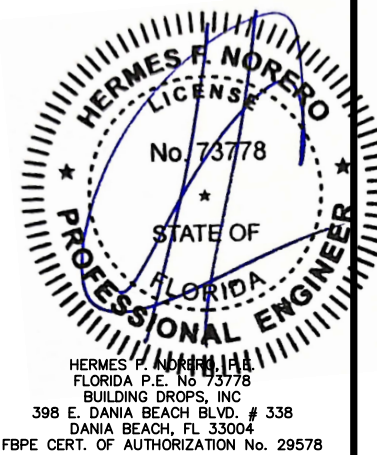
ONE SILVERLINE DRIVE
NORTH BRUNSWICK, NJ 08902
PH: (888) 741-0354

TITLE: **SERIES 2723 (PART #230295), 2724, 2728 (PART #230296) (HVHZ) STRUCTURAL BEAM MULLION (HVHZ) (IMPACT) 2723 MULLION LOAD TABLES**

PREPARED BY: **BUILDING DROPS, INC.**
398 E. DANIA BEACH BLVD., STE. 338
DANIA BEACH, FL 33004
PH: (954) 399-8478
FAX: (954) 744-4738
WEB: www.buildingdrops.com

REMARKS	BY	DATE
6TH FBC EDITION	AG	10/17
ELEVATIONS UPDATED	SM	6/19
7th FBC EDITION	LH	10/20
8th FBC EDITION	LH	09/23

THE INSTALLATION DETAILS DESCRIBED HEREIN ARE GENERIC AND MAY NOT REFLECT ACTUAL CONDITIONS FOR A SPECIFIC SITE. IF SITE CONDITIONS CAUSE INSTALLATION TO DEVIATE FROM THE REQUIREMENTS DETAILED HEREIN, A LICENSED ENGINEER OR ARCHITECT SHALL PREPARE SITE SPECIFIC DOCUMENTS FOR USE WITH THIS DOCUMENT.



FL #: **FL 6067**

DATE: **02/11/19**

DWG. BY: **HR** CHK. BY: **HFN**

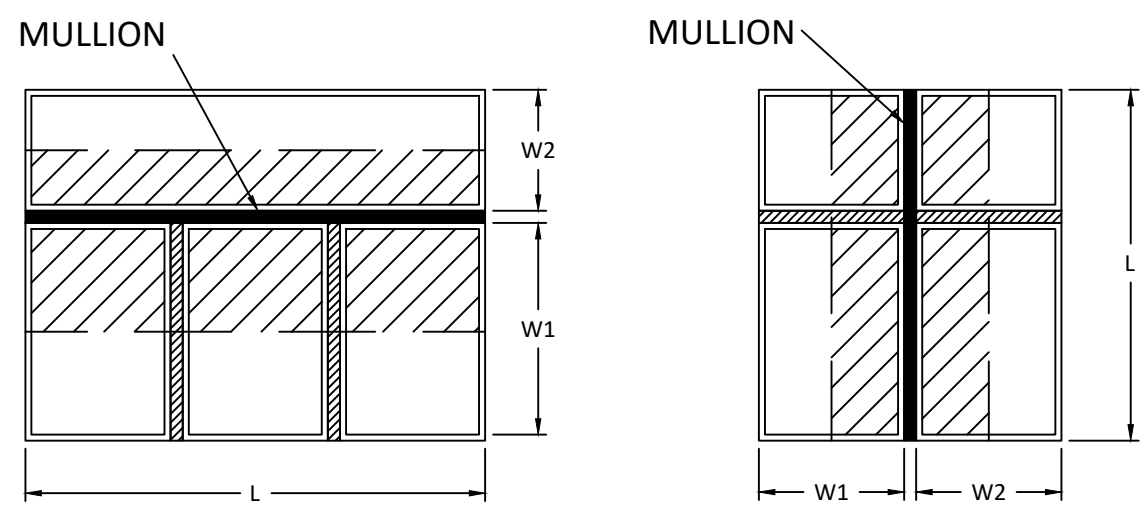
SCALE: **NTS**

DWG. #: **SWD015**

SHEET **7** OF 16

MAXIMUM DESIGN PRESSURE CAPACITY CHART (PSF): 2723 STRUCTURAL MULLIONS (TWO-WAY CONFIGURATIONS) - INSTALLATION TO CMU

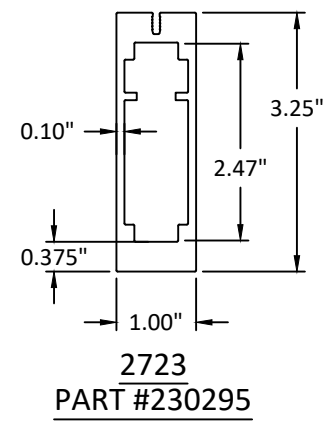
L - MULL LENGTH (IN)	W - TRIBUTARY WIDTH (IN)																								
	18.0	20.0	22.0	24.0	26.0	28.0	30.0	32.0	34.0	36.0	38.0	40.0	42.0	44.0	46.0	48.0	50.0	52.0	54.0	56.0	58.0	60.0	62.0	64.0	
60.0	100.0	100.0	100.0	100.0	100.0	100.0	100.0	100.0	100.0	100.0	100.0	94.7	90.0	85.7	81.8	78.3	75.0	72.0	69.2	66.7	64.3	62.1	60.0	58.1	56.3
62.0	100.0	100.0	100.0	100.0	100.0	100.0	100.0	100.0	100.0	100.0	96.8	91.7	87.1	82.9	79.2	75.7	72.6	69.7	67.0	64.5	62.2	60.1	58.1	56.2	54.4
64.0	100.0	100.0	100.0	100.0	100.0	100.0	100.0	100.0	99.3	93.8	88.8	84.4	80.4	76.7	73.4	70.3	67.5	64.9	62.5	60.3	58.2	56.3	54.4	52.7	
66.0	100.0	100.0	100.0	100.0	100.0	100.0	100.0	100.0	96.3	90.9	86.1	81.8	77.9	74.4	71.1	68.2	65.5	62.9	60.6	58.4	56.4	54.5	52.8	51.1	
68.0	100.0	100.0	100.0	100.0	100.0	100.0	100.0	99.3	93.4	88.2	83.6	79.4	75.6	72.2	69.1	66.2	63.5	61.1	58.8	56.7	54.8	52.9	51.2	49.6	
70.0	100.0	100.0	100.0	100.0	100.0	100.0	100.0	96.4	90.8	85.7	81.2	77.1	73.5	70.1	67.1	64.3	61.7	59.3	57.1	55.1	53.2	51.4	49.8	48.2	
72.0	100.0	100.0	100.0	100.0	100.0	100.0	100.0	93.8	88.2	83.3	78.9	75.0	71.4	68.2	65.2	62.5	60.0	57.7	55.6	53.6	51.7	50.0	48.4	46.9	
74.0	100.0	100.0	100.0	100.0	100.0	100.0	97.3	91.2	85.9	81.1	76.8	73.0	69.5	66.3	63.5	60.8	58.4	56.1	54.1	52.1	50.3	48.6	47.1	45.6	



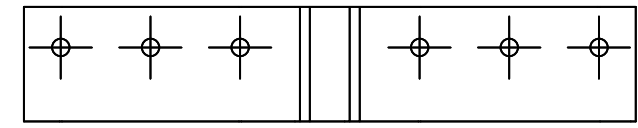
TRIBUTARY WIDTH = $\frac{W1+W2}{2}$

TWO-WAY MULLION DIAGRAMS

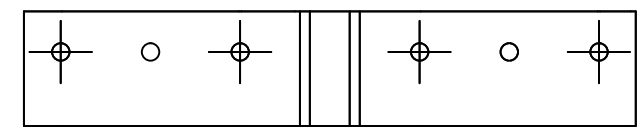
- TABLE NOTES:**
- SEE SHEET 1 FOR INSTRUCTIONS ON USING TABLES. SEE SHEET 4 FOR TYPICAL INSTALLATION METHODS & CLIP DETAILS.
 - LINEAR INTERPOLATION BETWEEN LISTED WIDTHS AND SPANS IS ALLOWED.
 - SEE THIS SHEET FOR SPECIFIC MULLION DIMENSIONS.
 - SEE SHEET 3 FOR SPECIFIC BRACKET DIMENSIONS.
 - ANCHOR REQUIREMENTS:
 - CMU: 1/4" SIMPSON STRONG-TIE TITEN ANCHOR
 - INSTALLATION SUBSTRATES:
 - HOLLOW CMU ANCHORS SHALL HAVE A MIN. EMBEDMENT OF 1" & EDGE DISTANCE OF 2". HOLLOW CMU SHALL BE MEDIUM WEIGHT CONFORMING TO ASTM C 90.
 - FOR MULL LENGTHS SHORTER THAN 60" USE VALUES FOR 60" LENGTH.
 - DEFLECTIONS HAS BEEN LIMITED TO L/180.



QUALIFIED ANCHOR CLIPS



MULLION ANCHOR BRACKET 50-2722 (PART #230297)
ALUMINUM (6063-T6)
FOR WOOD SCREW OR MULLION TO MULLION ANCHORING



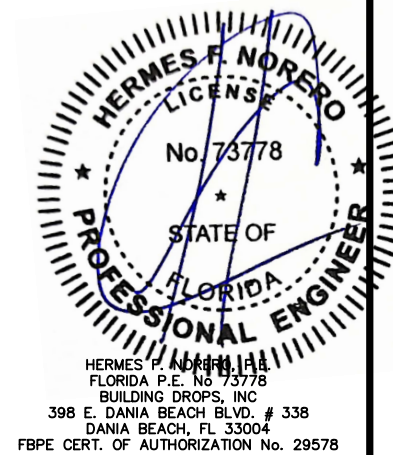
MULLION ANCHOR BRACKET 50-2722 (PART #230297)
ALUMINUM (6063-T6)
FOR CMU ANCHORING

TITLE:
SERIES 2723 (PART #230295),
2724, 2728 (PART #230296)
(HVHZ) STRUCTURAL BEAM
MULLION (HVHZ) (IMPACT)
2723 MULLION LOAD TABLES-CMU ONLY

PREPARED BY:
BUILDING DROPS, INC.
398 E. DANIA BEACH BLVD., STE. 338
DANIA BEACH, FL 33004
PH: (954)399-8478
FAX: (954)744-4738
WEB: www.buildingdrops.com

REMARKS	BY	DATE
6TH FBC EDITION	AG	10/17
ELEVATIONS UPDATED	SM	6/19
7th FBC EDITION	LH	10/20
8th FBC EDITION	LH	09/23

THE INSTALLATION DETAILS DESCRIBED HEREIN ARE GENERIC AND MAY NOT REFLECT ACTUAL CONDITIONS FOR A SPECIFIC SITE. IF SITE CONDITIONS CAUSE INSTALLATION TO DEVIATE FROM THE REQUIREMENTS DETAILED HEREIN, A LICENSED ENGINEER OR ARCHITECT SHALL PREPARE SITE SPECIFIC DOCUMENTS FOR USE WITH THIS DOCUMENT.



FL #: **FL 6067**

DATE: **02/11/19**

DWG. BY: **HR** CHK. BY: **HFN**

SCALE: **NTS**

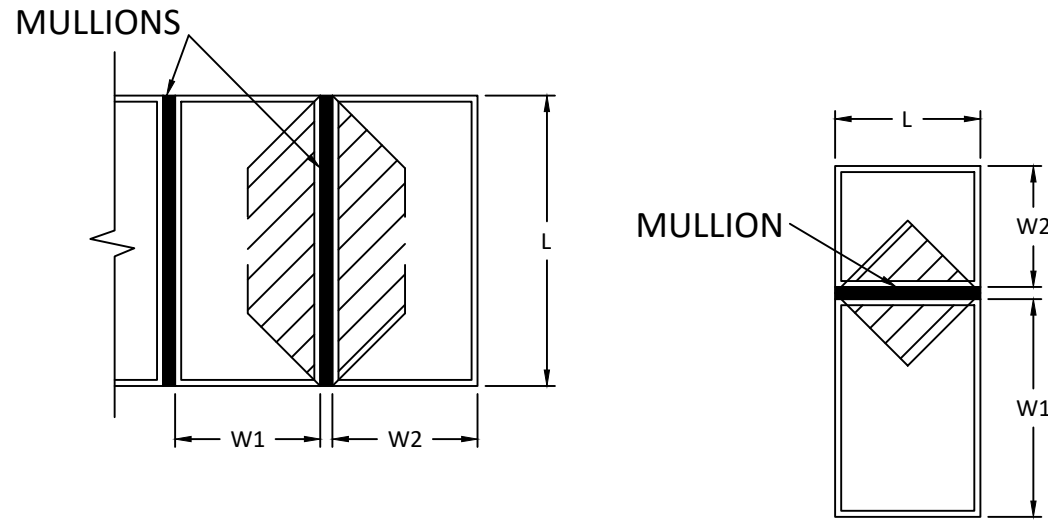
DWG. #: **SWD015**

SHEET



MAXIMUM DESIGN PRESSURE CAPACITY CHART (PSF): 2724 STRUCTURAL MULLIONS (ONE-WAY CONFIGURATIONS) - INSTALLATION TO WOOD, CONCRETE, ALUMINUM, OR STEEL

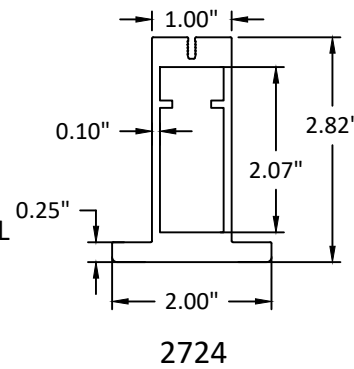
L - MULL LENGTH (IN)	W - TRIBUTARY WIDTH (IN)																		
	18.0	20.0	22.0	24.0	26.0	28.0	30.0	32.0	34.0	36.0	38.0	40.0	42.0	44.0	46.0	48.0	50.0	52.0	54.0
60.0	100.0	100.0	100.0	100.0	100.0	100.0	100.0	100.0	100.0	100.0	100.0	100.0	100.0	100.0	100.0	100.0	100.0	100.0	100.0
62.0	100.0	100.0	100.0	100.0	100.0	100.0	100.0	100.0	100.0	100.0	100.0	100.0	100.0	100.0	100.0	100.0	100.0	100.0	100.0
64.0	100.0	100.0	100.0	100.0	100.0	100.0	100.0	100.0	100.0	100.0	100.0	100.0	100.0	100.0	100.0	98.9	97.0	95.5	94.2
66.0	100.0	100.0	100.0	100.0	100.0	100.0	100.0	100.0	100.0	100.0	100.0	99.3	96.1	93.3	90.9	88.8	87.0	85.5	84.2
68.0	100.0	100.0	100.0	100.0	100.0	100.0	100.0	100.0	100.0	97.2	93.3	89.9	87.0	84.4	82.1	80.1	78.4	76.9	75.6
70.0	100.0	100.0	100.0	100.0	100.0	100.0	100.0	97.3	92.6	88.5	84.9	81.8	79.0	76.6	74.4	72.5	70.9	69.4	68.2
72.0	100.0	100.0	100.0	100.0	100.0	99.8	94.0	89.0	84.7	80.9	77.5	74.6	72.0	69.7	67.7	65.9	64.3	62.9	61.7
74.0	100.0	100.0	100.0	100.0	97.9	91.6	86.3	81.6	77.6	74.1	71.0	68.2	65.8	63.7	61.7	60.1	58.6	57.3	56.1



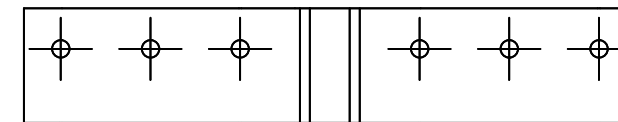
ONE-WAY MULLION DIAGRAMS

TABLE NOTES:

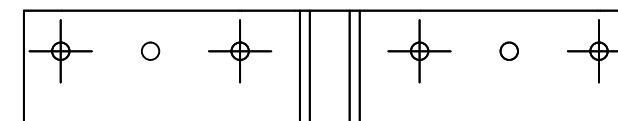
- SEE SHEET 1 FOR INSTRUCTIONS ON USING TABLES. SEE SHEET 4 FOR TYPICAL INSTALLATION METHODS & CLIP DETAILS.
- LINEAR INTERPOLATION BETWEEN LISTED WIDTHS AND SPANS IS ALLOWED.
- SEE THIS SHEET FOR SPECIFIC MULLION DIMENSIONS.
- SEE SHEET 3 FOR SPECIFIC BRACKET DIMENSIONS.
- ANCHOR REQUIREMENTS:
 - WOOD: #12 WOOD SCREWS
 - CONCRETE: 1/4" SIMPSON STRONG-TIE TITEN ANCHOR
 - METAL: #12 SELF-DRILLING SCREWS (GRADE 5)
- INSTALLATION SUBSTRATES:
 - WOOD ANCHORS SHALL HAVE A MIN. EMBEDMENT OF 1-1/2" & EDGE DISTANCE OF 0.75". WOOD SHALL BE MIN. S.G.=0.55.
 - CONCRETE ANCHORS SHALL HAVE A MIN. EMBEDMENT OF 1-3/4" & EDGE DISTANCE OF 2". CONCRETE SHALL BE MIN. 4000 PSI.
 - METAL ANCHORS SHALL HAVE A MIN. (3) THREADS PENETRATION BEYOND METAL STRUCTURE. STEEL SHALL BE MIN. 18 GA. (0.045" THICK) 33 KSI YIELD & ALUMINUM SHALL BE MIN. 0.1" THICK ALUMINUM 6063-T6. WITH MIN. EDGE DISTANCE OF 1" FOR BOTH ALUM. AND STEEL.
- FOR MULL LENGTHS SHORTER THAN 60" USE VALUES FOR 60" LENGTH.
- DEFLECTIONS HAS BEEN LIMITED TO L/180.



QUALIFIED ANCHOR CLIPS



**MULLION ANCHOR BRACKET 50-2722 (PART #230297)
ALUMINUM (6063-T6)
FOR WOOD SCREW OR MULLION TO MULLION ANCHORING**



**MULLION ANCHOR BRACKET 50-2722 (PART #230297)
ALUMINUM (6063-T6)
FOR CONCRETE ANCHORING**

AMERICAN CRAFTSMAN WINDOWS
PLY GEM WINDOWS
SILVER LINE WINDOWS AND DOORS

ONE SILVERLINE DRIVE
NORTH BRUNSWICK, NJ 08902
PH: (888) 741-0354

TITLE: SERIES 2723 (PART #230295),
2724, 2728 (PART #230296)
(HVHZ) STRUCTURAL BEAM
MULLION (HVHZ) (IMPACT)
2724 MULLION LOAD TABLES

PREPARED BY:
BUILDING DROPS, INC.
398 E. DANIA BEACH BLVD., STE. 338
DANIA BEACH, FL 33004
PH: (954)399-8478
FAX: (954)744-4738
WEB: www.buildingdrops.com



REMARKS	BY	DATE
6TH FBC EDITION	AG	10/17
ELEVATIONS UPDATED	SM	6/19
7th FBC EDITION	LH	10/20
8th FBC EDITION	LH	09/23

THE INSTALLATION DETAILS DESCRIBED HEREIN ARE GENERIC AND MAY NOT REFLECT ACTUAL CONDITIONS FOR A SPECIFIC SITE. IF SITE CONDITIONS CAUSE INSTALLATION TO DEVIATE FROM THE REQUIREMENTS DETAILED HEREIN, A LICENSED ENGINEER OR ARCHITECT SHALL PREPARE SITE SPECIFIC DOCUMENTS FOR USE WITH THIS DOCUMENT.



HERMES F. NORERO, P.E.
FLORIDA P.E. No. 73778
BUILDING DROPS, INC.
398 E. DANIA BEACH BLVD. # 338
DANIA BEACH, FL 33004
FBPE CERT. OF AUTHORIZATION No. 29578

FL #: **FL 6067**

DATE: **02/11/19**

DWG. BY: **HR** CHK. BY: **HFN**

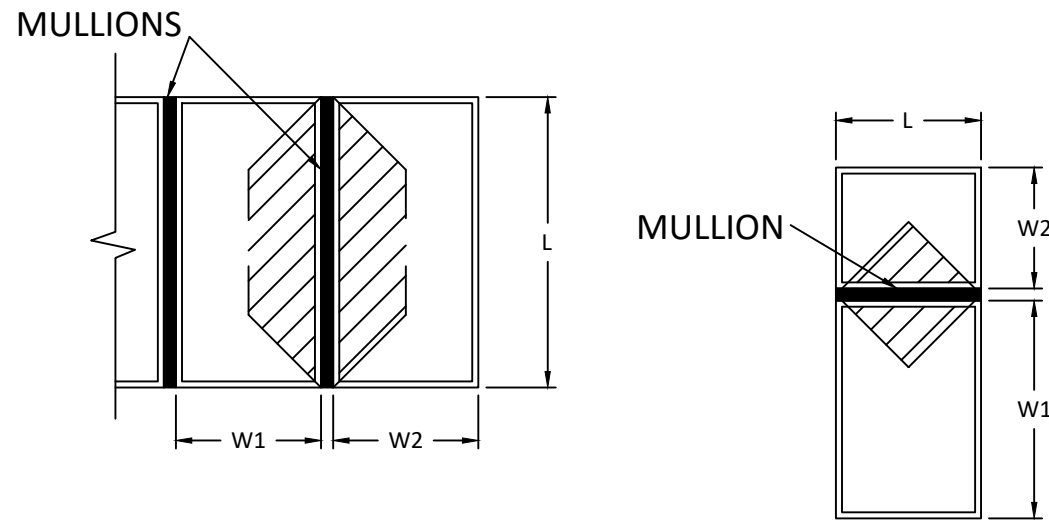
SCALE: **NTS**

DWG. #: **SWD015**

SHEET **9**

MAXIMUM DESIGN PRESSURE CAPACITY CHART (PSF): 2724 STRUCTURAL MULLIONS (ONE-WAY CONFIGURATIONS) - INSTALLATION TO CMU

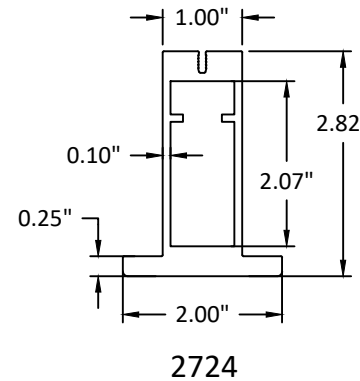
L - MULL LENGTH (IN)	W - TRIBUTARY WIDTH (IN)																		
	18.0	20.0	22.0	24.0	26.0	28.0	30.0	32.0	34.0	36.0	38.0	40.0	42.0	44.0	46.0	48.0	50.0	52.0	54.0
60.0	100.0	100.0	100.0	100.0	100.0	100.0	100.0	100.0	100.0	100.0	100.0	100.0	100.0	100.0	100.0	100.0	100.0	100.0	100.0
62.0	100.0	100.0	100.0	100.0	100.0	100.0	100.0	100.0	100.0	100.0	100.0	100.0	100.0	100.0	100.0	100.0	100.0	100.0	100.0
64.0	100.0	100.0	100.0	100.0	100.0	100.0	100.0	100.0	100.0	100.0	100.0	100.0	100.0	100.0	100.0	98.9	97.0	95.5	94.2
66.0	100.0	100.0	100.0	100.0	100.0	100.0	100.0	100.0	100.0	100.0	100.0	99.3	96.1	93.3	90.9	88.8	87.0	85.5	84.2
68.0	100.0	100.0	100.0	100.0	100.0	100.0	100.0	100.0	100.0	97.2	93.3	89.9	87.0	84.4	82.1	80.1	78.4	76.9	75.6
70.0	100.0	100.0	100.0	100.0	100.0	100.0	100.0	97.3	92.6	88.5	84.9	81.8	79.0	76.6	74.4	72.5	70.9	69.4	68.2
72.0	100.0	100.0	100.0	100.0	100.0	99.8	94.0	89.0	84.7	80.9	77.5	74.6	72.0	69.7	67.7	65.9	64.3	62.9	61.7
74.0	100.0	100.0	100.0	100.0	97.9	91.6	86.3	81.6	77.6	74.1	71.0	68.2	65.8	63.7	61.7	60.1	58.6	57.3	56.1



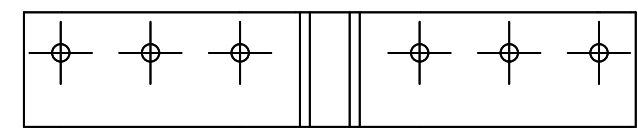
ONE-WAY MULLION DIAGRAMS

TABLE NOTES:

- SEE SHEET 1 FOR INSTRUCTIONS ON USING TABLES. SEE SHEET 4 FOR TYPICAL INSTALLATION METHODS & CLIP DETAILS.
- LINEAR INTERPOLATION BETWEEN LISTED WIDTHS AND SPANS IS ALLOWED.
- SEE THIS SHEET FOR SPECIFIC MULLION DIMENSIONS.
- SEE SHEET 3 FOR SPECIFIC BRACKET DIMENSIONS.
- ANCHOR REQUIREMENTS:
 - CMU: 1/4" SIMPSON STRONG-TIE TITEN ANCHOR
- INSTALLATION SUBSTRATES:
 - HOLLOW CMU ANCHORS SHALL HAVE A MIN. EMBEDMENT OF 1" & EDGE DISTANCE OF 2". HOLLOW CMU SHALL BE MEDIUM WEIGHT CONFORMING TO ASTM C 90.
- FOR MULL LENGTHS SHORTER THAN 60" USE VALUES FOR 60" LENGTH.
- DEFLECTIONS HAS BEEN LIMITED TO L/180.



QUALIFIED ANCHOR CLIPS



MULLION ANCHOR BRACKET 50-2722 (PART #230297)
ALUMINUM (6063-T6)
FOR WOOD SCREW OR MULLION TO MULLION ANCHORING



MULLION ANCHOR BRACKET 50-2722 (PART #230297)
ALUMINUM (6063-T6)
FOR CMU ANCHORING

AMERICAN CRAFTSMAN WINDOWS
PLY GEM WINDOWS
SILVER LINE WINDOWS AND DOORS

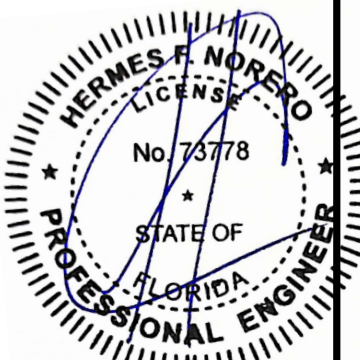
ONE SILVERLINE DRIVE
NORTH BRUNSWICK, NJ 08902
PH: (888) 741-0354

TITLE: SERIES 2723 (PART #230295),
2724, 2728 (PART #230296)
(HVHZ) STRUCTURAL BEAM
MULLION (HVHZ) (IMPACT)
2724 MULLION LOAD TABLES-CMU ONLY

PREPARED BY: BUILDING DROPS, INC.
398 E. DANIA BEACH BLVD., STE. 338
DANIA BEACH, FL 33004
PH: (954)399-8478
FAX: (954)744-4738
WEB: www.buildingdrops.com

REMARKS	BY	DATE
6TH FBC EDITION	AG	10/17
ELEVATIONS UPDATED	SM	6/19
7th FBC EDITION	LH	10/20
8th FBC EDITION	LH	09/23

THE INSTALLATION DETAILS DESCRIBED HEREIN ARE GENERIC AND MAY NOT REFLECT ACTUAL CONDITIONS FOR A SPECIFIC SITE. IF SITE CONDITIONS CAUSE INSTALLATION TO DEVIATE FROM THE REQUIREMENTS DETAILED HEREIN, A LICENSED ENGINEER OR ARCHITECT SHALL PREPARE SITE SPECIFIC DOCUMENTS FOR USE WITH THIS DOCUMENT.



HERMES F. NORERO, P.E.
FLORIDA P.E. No. 73778
BUILDING DROPS, INC.
398 E. DANIA BEACH BLVD. # 338
DANIA BEACH, FL 33004
FBPE CERT. OF AUTHORIZATION No. 29578

FL #: **FL 6067**

DATE: **02/11/19**

DWG. BY: **HR** CHK. BY: **HFN**

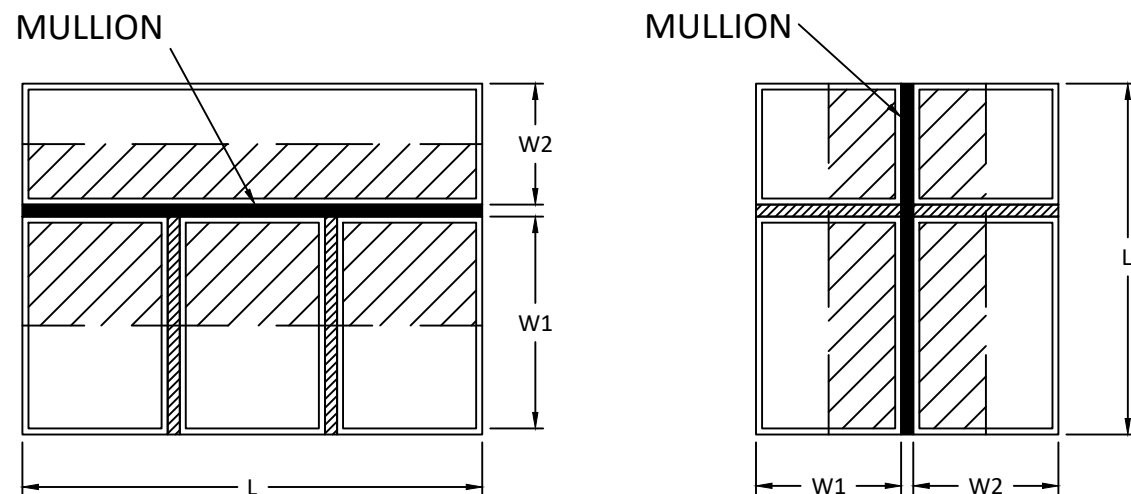
SCALE: **NTS**

DWG. #: **SWD015**

SHEET
10
OF 16

MAXIMUM DESIGN PRESSURE CAPACITY CHART (PSF): 2724 STRUCTURAL MULLIONS (TWO-WAY CONFIGURATIONS) - INSTALLATION TO WOOD, CONCRETE, ALUMINUM, OR STEEL

L - MULL LENGTH (IN)	W - TRIBUTARY WIDTH (IN)																							
	18.0	20.0	22.0	24.0	26.0	28.0	30.0	32.0	34.0	36.0	38.0	40.0	42.0	44.0	46.0	48.0	50.0	52.0	54.0	56.0	58.0	60.0	62.0	64.0
60.0	100.0	100.0	100.0	100.0	100.0	100.0	100.0	100.0	100.0	100.0	100.0	100.0	100.0	100.0	98.7	94.6	90.8	87.3	84.1	81.1	78.3	75.7	73.2	70.9
62.0	100.0	100.0	100.0	100.0	100.0	100.0	100.0	100.0	100.0	100.0	100.0	100.0	98.0	93.5	89.4	85.7	82.3	79.1	76.2	73.5	70.9	68.6	66.4	64.3
64.0	100.0	100.0	100.0	100.0	100.0	100.0	100.0	100.0	100.0	100.0	98.4	93.5	89.1	85.0	81.3	77.9	74.8	71.9	69.3	66.8	64.5	62.3	60.3	58.4
66.0	100.0	100.0	100.0	100.0	100.0	100.0	100.0	100.0	100.0	94.7	89.7	85.3	81.2	77.5	74.1	71.0	68.2	65.6	63.2	60.9	58.8	56.8	55.0	53.3
68.0	100.0	100.0	100.0	100.0	100.0	100.0	100.0	97.4	91.7	86.6	82.1	78.0	74.2	70.9	67.8	65.0	62.4	60.0	57.7	55.7	53.8	52.0	50.3	48.7
70.0	100.0	100.0	100.0	100.0	100.0	100.0	95.3	89.3	84.1	79.4	75.2	71.5	68.1	65.0	62.1	59.6	57.2	55.0	52.9	51.0	49.3	47.6	46.1	44.7
72.0	100.0	100.0	100.0	100.0	100.0	93.8	87.6	82.1	77.3	73.0	69.1	65.7	62.5	59.7	57.1	54.7	52.5	50.5	48.6	46.9	45.3	43.8	42.4	41.0
74.0	100.0	100.0	100.0	100.0	93.1	86.4	80.7	75.6	71.2	67.2	63.7	60.5	57.6	55.0	52.6	50.4	48.4	46.5	44.8	43.2	41.7	40.3	39.0	37.8



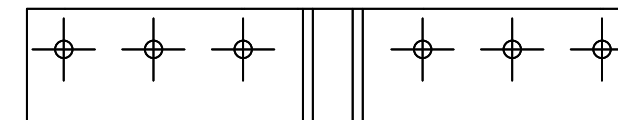
$$\text{TRIBUTARY WIDTH} = \frac{W1+W2}{2}$$

TWO-WAY MULLION DIAGRAMS

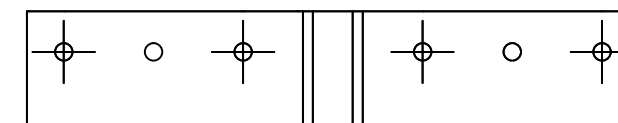
TABLE NOTES:

- SEE SHEET 1 FOR INSTRUCTIONS ON USING TABLES. SEE SHEET 4 FOR TYPICAL INSTALLATION METHODS & CLIP DETAILS.
- LINEAR INTERPOLATION BETWEEN LISTED WIDTHS AND SPANS IS ALLOWED.
- SEE THIS SHEET FOR SPECIFIC MULLION DIMENSIONS.
- SEE SHEET 3 FOR SPECIFIC BRACKET DIMENSIONS.
- ANCHOR REQUIREMENTS:
 - WOOD: #12 WOOD SCREWS
 - CONCRETE: 1/4" SIMPSON STRONG-TIE TITEN ANCHOR
 - METAL: #12 SELF-DRILLING SCREWS (GRADE 5)
- INSTALLATION SUBSTRATES:
 - WOOD ANCHORS SHALL HAVE A MIN. EMBEDMENT OF 1-1/2" & EDGE DISTANCE OF 0.75". WOOD SHALL BE MIN. S.G.=0.55.
 - CONCRETE ANCHORS SHALL HAVE A MIN. EMBEDMENT OF 1-3/4" & EDGE DISTANCE OF 2". CONCRETE SHALL BE MIN. 4000 PSI.
 - METAL ANCHORS SHALL HAVE A MIN. (3) THREADS PENETRATION BEYOND METAL STRUCTURE. STEEL SHALL BE MIN. 18 GA. (0.045" THICK) 33 KSI YIELD & ALUMINUM SHALL BE MIN. 0.1" THICK ALUMINUM 6063-T6 WITH MIN. EDGE DISTANCE OF 1" FOR BOTH ALUM. AND STEEL.
- FOR MULL LENGTHS SHORTER THAN 60" USE VALUES FOR 60" LENGTH.
- DEFLECTIONS HAS BEEN LIMITED TO L/180.

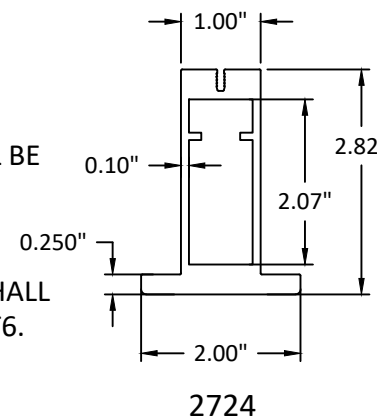
QUALIFIED ANCHOR CLIPS



MULLION ANCHOR BRACKET 50-2722 (PART #230297)
ALUMINUM (6063-T6)
FOR WOOD SCREW OR MULLION TO MULLION ANCHORING



MULLION ANCHOR BRACKET 50-2722 (PART #230297)
ALUMINUM (6063-T6)
FOR CONCRETE ANCHORING



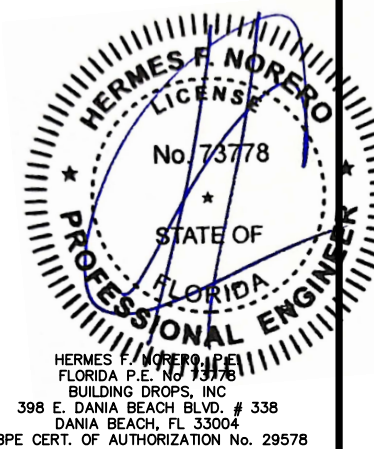
TITLE:
SERIES 2723 (PART #230295),
2724, 2728 (PART #230296)
(HVHZ) STRUCTURAL BEAM
MULLION (HVHZ) (IMPACT)
2724 MULLION LOAD TABLES

PREPARED BY:
BUILDING DROPS, INC.
398 E. DANIA BEACH BLVD., STE. 338
DANIA BEACH, FL 33004
PH: (954)399-8478
FAX: (954)744-4738
WEB: www.buildingdrops.com



REMARKS	BY	DATE
6TH FBC EDITION	AG	10/17
ELEVATIONS UPDATED	SM	6/19
7th FBC EDITION	LH	10/20
8th FBC EDITION	LH	09/23

THE INSTALLATION DETAILS DESCRIBED HEREIN ARE GENERIC AND MAY NOT REFLECT ACTUAL CONDITIONS FOR A SPECIFIC SITE. IF SITE CONDITIONS CAUSE INSTALLATION TO DEVIATE FROM THE REQUIREMENTS DETAILED HEREIN, A LICENSED ENGINEER OR ARCHITECT SHALL PREPARE SITE SPECIFIC DOCUMENTS FOR USE WITH THIS DOCUMENT.



FL #: **FL 6067**

DATE: **02/11/19**

DWG. BY: **HR** CHK. BY: **HFN**

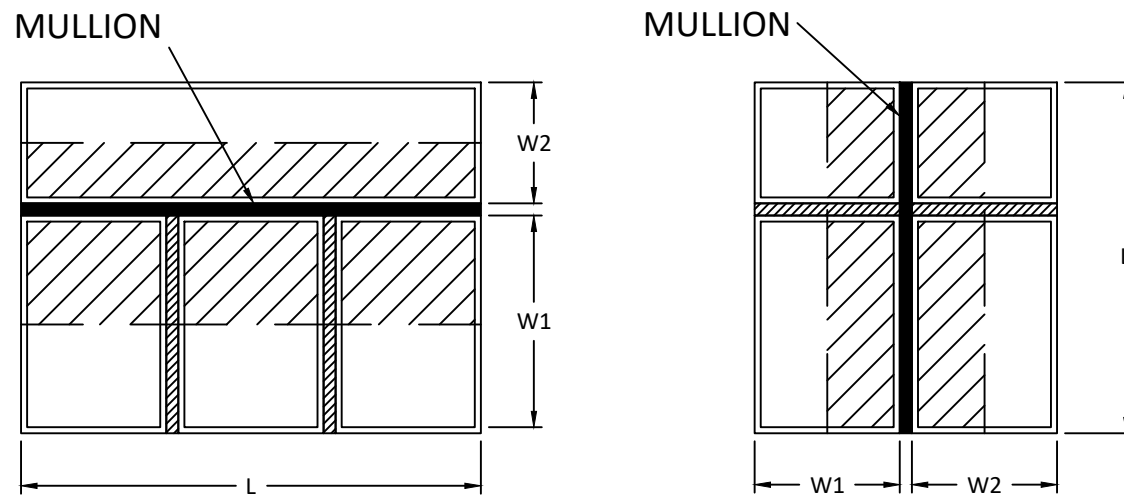
SCALE: **NTS**

DWG. #: **SWD015**

SHEET **11** OF 16

MAXIMUM DESIGN PRESSURE CAPACITY CHART (PSF): 2724 STRUCTURAL MULLIONS (TWO-WAY CONFIGURATIONS) - INSTALLATION TO CMU

L - MULL LENGTH (IN)	W - TRIBUTARY WIDTH (IN)																								
	18.0	20.0	22.0	24.0	26.0	28.0	30.0	32.0	34.0	36.0	38.0	40.0	42.0	44.0	46.0	48.0	50.0	52.0	54.0	56.0	58.0	60.0	62.0	64.0	
60.0	100.0	100.0	100.0	100.0	100.0	100.0	100.0	100.0	100.0	100.0	94.7	90.0	85.7	81.8	78.3	75.0	72.0	69.2	66.7	64.3	62.1	60.0	58.1	56.3	
62.0	100.0	100.0	100.0	100.0	100.0	100.0	100.0	100.0	100.0	100.0	96.8	91.7	87.1	82.9	79.2	75.7	72.6	69.7	67.0	64.5	62.2	60.1	58.1	56.2	54.4
64.0	100.0	100.0	100.0	100.0	100.0	100.0	100.0	100.0	99.3	93.8	88.8	84.4	80.4	76.7	73.4	70.3	67.5	64.9	62.5	60.3	58.2	56.3	54.4	52.7	
66.0	100.0	100.0	100.0	100.0	100.0	100.0	100.0	100.0	96.3	90.9	86.1	81.8	77.9	74.4	71.1	68.2	65.5	62.9	60.6	58.4	56.4	54.5	52.8	51.1	
68.0	100.0	100.0	100.0	100.0	100.0	100.0	100.0	97.4	91.7	86.6	82.1	78.0	74.2	70.9	67.8	65.0	62.4	60.0	57.7	55.7	53.8	52.0	50.3	48.7	
70.0	100.0	100.0	100.0	100.0	100.0	100.0	95.3	89.3	84.1	79.4	75.2	71.5	68.1	65.0	62.1	59.6	57.2	55.0	52.9	51.0	49.3	47.6	46.1	44.7	
72.0	100.0	100.0	100.0	100.0	100.0	93.8	87.6	82.1	77.3	73.0	69.1	65.7	62.5	59.7	57.1	54.7	52.5	50.5	48.6	46.9	45.3	43.8	42.4	41.0	
74.0	100.0	100.0	100.0	100.0	93.1	86.4	80.7	75.6	71.2	67.2	63.7	60.5	57.6	55.0	52.6	50.4	48.4	46.5	44.8	43.2	41.7	40.3	39.0	37.8	

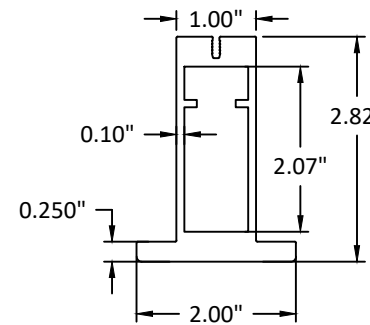


$$\text{TRIBUTARY WIDTH} = \frac{W1+W2}{2}$$

TWO-WAY MULLION DIAGRAMS

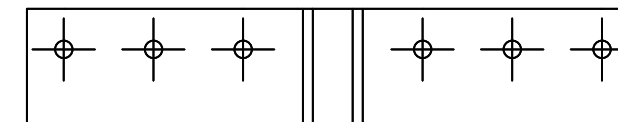
TABLE NOTES:

- SEE SHEET 1 FOR INSTRUCTIONS ON USING TABLES. SEE SHEET 4 FOR TYPICAL INSTALLATION METHODS & CLIP DETAILS.
- LINEAR INTERPOLATION BETWEEN LISTED WIDTHS AND SPANS IS ALLOWED.
- SEE THIS SHEET FOR SPECIFIC MULLION DIMENSIONS.
- SEE SHEET 3 FOR SPECIFIC BRACKET DIMENSIONS.
- ANCHOR REQUIREMENTS:
 - CMU: 1/4" SIMPSON STRONG-TIE TITEN ANCHOR
- INSTALLATION SUBSTRATES:
 - HOLLOW CMU ANCHORS SHALL HAVE A MIN. EMBEDMENT OF 1" & EDGE DISTANCE OF 2".
HOLLOW CMU SHALL BE MEDIUM WEIGHT CONFORMING TO ASTM C 90.
- FOR MULL LENGTHS SHORTER THAN 60" USE VALUES FOR 60" LENGTH.
- DEFLECTIONS HAS BEEN LIMITED TO L/180.

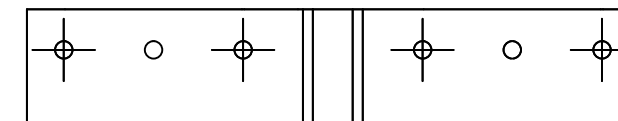


2724

QUALIFIED ANCHOR CLIPS



MULLION ANCHOR BRACKET 50-2722 (PART #230297)
ALUMINUM (6063-T6)
FOR WOOD SCREW OR MULLION TO MULLION ANCHORING



MULLION ANCHOR BRACKET 50-2722 (PART #230297)
ALUMINUM (6063-T6)
FOR CMU ANCHORING

AMERICAN CRAFTSMAN WINDOWS
PLY GEM WINDOWS
SILVER LINE WINDOWS AND DOORS

ONE SILVERLINE DRIVE
NORTH BRUNSWICK, NJ 08902
PH: (888) 741-0354

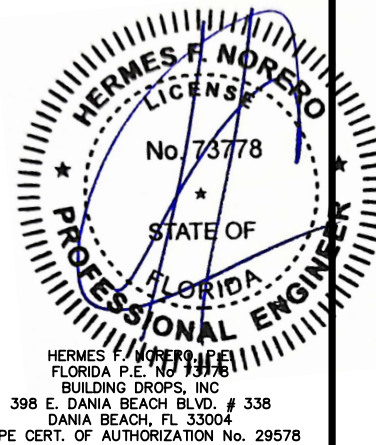
TITLE:
SERIES 2723 (PART #230295),
2724, 2728 (PART #230296)
(HVHZ) STRUCTURAL BEAM
MULLION (HVHZ) (IMPACT)
2724 MULLION LOAD TABLES-CMU ONLY

PREPARED BY:
BUILDING DROPS, INC.
398 E. DANIA BEACH BLVD., STE. 338
DANIA BEACH, FL 33004
PH: (954) 399-8478
FAX: (954) 744-4738
WEB: www.buildingdrops.com



REMARKS	BY	DATE
6TH FBC EDITION	AG	10/17
ELEVATIONS UPDATED	SM	6/19
7th FBC EDITION	LH	10/20
8th FBC EDITION	LH	09/23

THE INSTALLATION DETAILS DESCRIBED HEREIN ARE GENERIC AND MAY NOT REFLECT ACTUAL CONDITIONS FOR A SPECIFIC SITE. IF SITE CONDITIONS CAUSE INSTALLATION TO DEVIATE FROM THE REQUIREMENTS DETAILED HEREIN, A LICENSED ENGINEER OR ARCHITECT SHALL PREPARE SITE SPECIFIC DOCUMENTS FOR USE WITH THIS DOCUMENT.



FL #: **FL 6067**

DATE: **02/11/19**

DWG. BY: **HR** CHK. BY: **HFN**

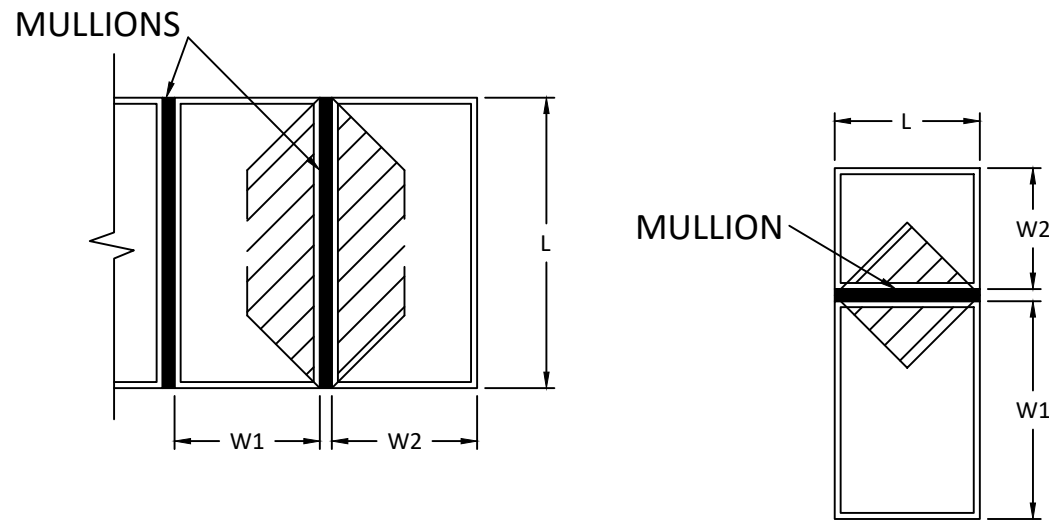
SCALE: **NTS**

DWG. #: **SWD015**

SHEET **12** OF 16

MAXIMUM DESIGN PRESSURE CAPACITY CHART (PSF): 2728 STRUCTURAL MULLIONS (ONE-WAY CONFIGURATIONS) - INSTALLATION TO WOOD, CONCRETE, ALUMINUM, OR STEEL

L - MULL LENGTH (IN)	W - TRIBUTARY WIDTH (IN)																		
	18.0	20.0	22.0	24.0	26.0	28.0	30.0	32.0	34.0	36.0	38.0	40.0	42.0	44.0	46.0	48.0	50.0	52.0	54.0
60.0	100.0	100.0	100.0	100.0	100.0	100.0	100.0	100.0	100.0	100.0	100.0	100.0	100.0	100.0	100.0	100.0	100.0	100.0	100.0
62.0	100.0	100.0	100.0	100.0	100.0	100.0	100.0	100.0	100.0	100.0	100.0	100.0	100.0	100.0	100.0	100.0	100.0	100.0	100.0
64.0	100.0	100.0	100.0	100.0	100.0	100.0	100.0	100.0	100.0	100.0	100.0	100.0	100.0	100.0	100.0	100.0	100.0	100.0	100.0
66.0	100.0	100.0	100.0	100.0	100.0	100.0	100.0	100.0	100.0	100.0	100.0	100.0	100.0	100.0	100.0	100.0	100.0	100.0	100.0
68.0	100.0	100.0	100.0	100.0	100.0	100.0	100.0	100.0	100.0	100.0	100.0	100.0	100.0	100.0	100.0	100.0	100.0	100.0	100.0
70.0	100.0	100.0	100.0	100.0	100.0	100.0	100.0	100.0	100.0	100.0	100.0	100.0	100.0	100.0	100.0	100.0	100.0	100.0	100.0
72.0	100.0	100.0	100.0	100.0	100.0	100.0	100.0	100.0	100.0	100.0	100.0	100.0	100.0	100.0	100.0	100.0	100.0	100.0	100.0
74.0	100.0	100.0	100.0	100.0	100.0	100.0	100.0	100.0	100.0	100.0	100.0	100.0	100.0	100.0	100.0	100.0	100.0	100.0	100.0

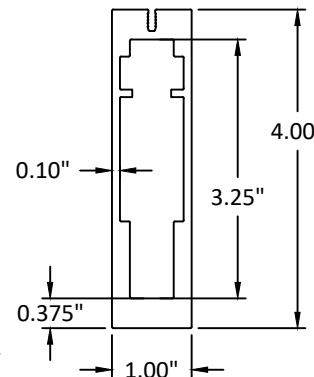


$$\text{TRIBUTARY WIDTH} = \frac{W1+W2}{2}$$

ONE-WAY MULLION DIAGRAMS

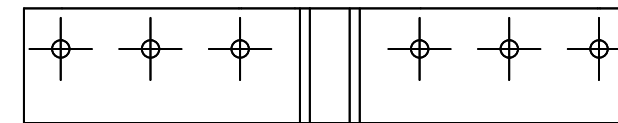
TABLE NOTES:

- SEE SHEET 1 FOR INSTRUCTIONS ON USING TABLES. SEE SHEET 4 FOR TYPICAL INSTALLATION METHODS & CLIP DETAILS.
- LINEAR INTERPOLATION BETWEEN LISTED WIDTHS AND SPANS IS ALLOWED.
- SEE THIS SHEET FOR SPECIFIC MULLION DIMENSIONS.
- SEE SHEET 3 FOR SPECIFIC BRACKET DIMENSIONS.
- ANCHOR REQUIREMENTS:
 - WOOD: #12 WOOD SCREWS
 - CONCRETE: 1/4" SIMPSON STRONG-TIE TITEN ANCHOR
 - METAL: #12 SELF-DRILLING SCREWS (GRADE 5)
- INSTALLATION SUBSTRATES:
 - WOOD ANCHORS SHALL HAVE A MIN. EMBEDMENT OF 1-1/2" & EDGE DISTANCE OF 0.75". WOOD SHALL BE MIN. S.G.=0.55.
 - CONCRETE ANCHORS SHALL HAVE A MIN. EMBEDMENT OF 1-3/4" & EDGE DISTANCE OF 2". CONCRETE SHALL BE MIN. 4000 PSI.
 - METAL ANCHORS SHALL HAVE A MIN. (3) THREADS PENETRATION BEYOND METAL STRUCTURE. STEEL SHALL BE MIN. 18 GA. (0.045" THICK) 33 KSI YIELD & ALUMINUM SHALL BE MIN. 0.1" THICK ALUMINUM 6063-T6. WITH MIN. EDGE DISTANCE OF 1" FOR BOTH ALUM. AND STEEL.
- FOR MULL LENGTHS SHORTER THAN 60" USE VALUES FOR 60" LENGTH.
- DEFLECTIONS HAS BEEN LIMITED TO L/180.

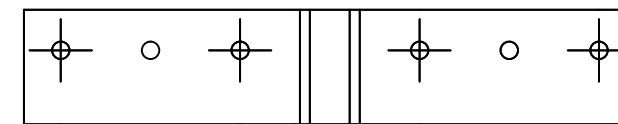


2728
PART #230296

QUALIFIED ANCHOR CLIPS



MULLION ANCHOR BRACKET 50-2722 (PART #230297)
ALUMINUM (6063-T6)
FOR WOOD SCREW OR MULLION TO MULLION ANCHORING



MULLION ANCHOR BRACKET 50-2722 (PART #230297)
ALUMINUM (6063-T6)
FOR CONCRETE ANCHORING

AMERICAN CRAFTSMAN WINDOWS
PLY GEM WINDOWS
SILVER LINE WINDOWS AND DOORS

ONE SILVERLINE DRIVE
NORTH BRUNSWICK, NJ 08902
PH: (888) 741-0354

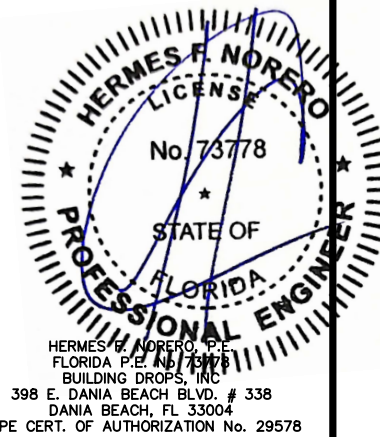
TITLE:
SERIES 2723 (PART #230295),
2724, 2728 (PART #230296)
(HVHZ) STRUCTURAL BEAM
MULLION (HVHZ) (IMPACT)
2728 MULLION LOAD TABLES

PREPARED BY:
BUILDING DROPS, INC.
398 E. DANIA BEACH BLVD., STE. 338
DANIA BEACH, FL 33004
PH: (954) 959-8478
FAX: (954) 744-4738
WEB: www.buildingdrops.com



REMARKS	BY	DATE
6TH FBC EDITION	AG	10/17
ELEVATIONS UPDATED	SM	6/19
7th FBC EDITION	LH	10/20
8th FBC EDITION	LH	09/23

THE INSTALLATION DETAILS DESCRIBED HEREIN ARE GENERIC AND MAY NOT REFLECT ACTUAL CONDITIONS FOR A SPECIFIC SITE. IF SITE CONDITIONS CAUSE INSTALLATION TO DEVIATE FROM THE REQUIREMENTS DETAILED HEREIN, A LICENSED ENGINEER OR ARCHITECT SHALL PREPARE SITE SPECIFIC DOCUMENTS FOR USE WITH THIS DOCUMENT.



FL #: **FL 6067**

DATE: **02/11/19**

DWG. BY: **HR** CHK. BY: **HFN**

SCALE: **NTS**

DWG. #: **SWD015**

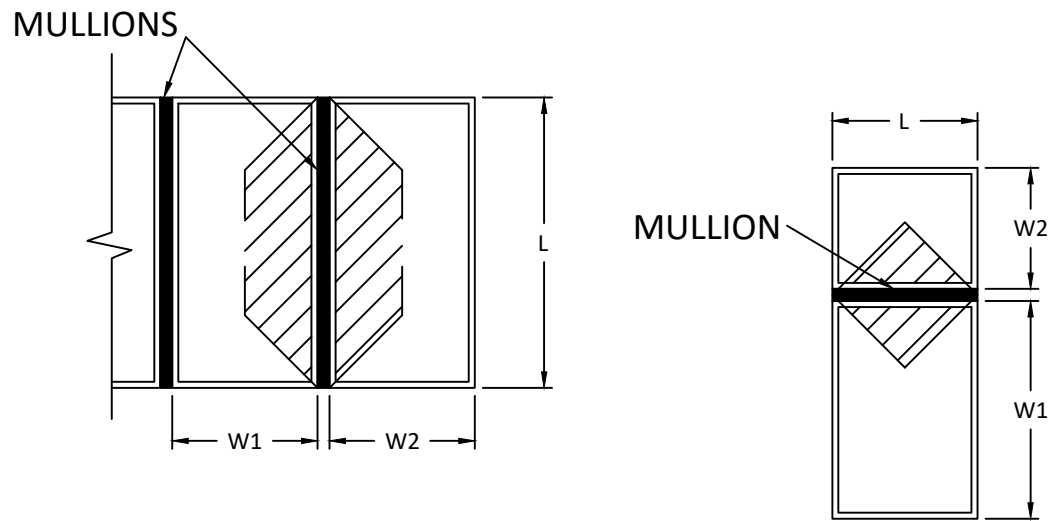
SHEET

13

OF 16

MAXIMUM DESIGN PRESSURE CAPACITY CHART (PSF): 2728 STRUCTURAL MULLIONS (ONE-WAY CONFIGURATIONS) - INSTALLATION TO CMU

L - MULL LENGTH (IN)	W - TRIBUTARY WIDTH (IN)																		
	18.0	20.0	22.0	24.0	26.0	28.0	30.0	32.0	34.0	36.0	38.0	40.0	42.0	44.0	46.0	48.0	50.0	52.0	54.0
60.0	100.0	100.0	100.0	100.0	100.0	100.0	100.0	100.0	100.0	100.0	100.0	100.0	100.0	100.0	100.0	100.0	100.0	100.0	100.0
62.0	100.0	100.0	100.0	100.0	100.0	100.0	100.0	100.0	100.0	100.0	100.0	100.0	100.0	100.0	100.0	100.0	100.0	100.0	100.0
64.0	100.0	100.0	100.0	100.0	100.0	100.0	100.0	100.0	100.0	100.0	100.0	100.0	100.0	100.0	100.0	100.0	100.0	100.0	100.0
66.0	100.0	100.0	100.0	100.0	100.0	100.0	100.0	100.0	100.0	100.0	100.0	100.0	100.0	100.0	100.0	100.0	100.0	100.0	100.0
68.0	100.0	100.0	100.0	100.0	100.0	100.0	100.0	100.0	100.0	100.0	100.0	100.0	100.0	100.0	100.0	100.0	100.0	98.9	97.6
70.0	100.0	100.0	100.0	100.0	100.0	100.0	100.0	100.0	100.0	100.0	100.0	100.0	100.0	100.0	99.9	97.8	96.0	94.4	93.0
72.0	100.0	100.0	100.0	100.0	100.0	100.0	100.0	100.0	100.0	100.0	100.0	100.0	100.0	98.2	95.8	93.8	91.9	90.3	88.9
74.0	100.0	100.0	100.0	100.0	100.0	100.0	100.0	100.0	100.0	100.0	100.0	100.0	97.0	94.4	92.1	90.0	88.2	86.5	85.1

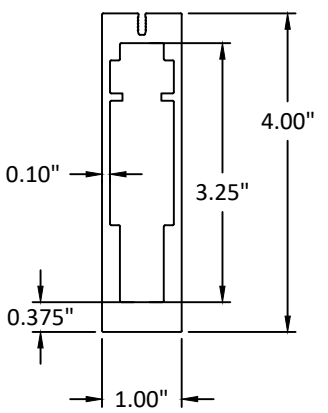


$$\text{TRIBUTARY WIDTH} = \frac{W1+W2}{2}$$

ONE-WAY MULLION DIAGRAMS

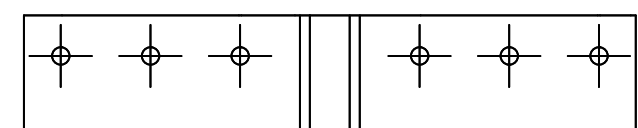
TABLE NOTES:

- SEE SHEET 1 FOR INSTRUCTIONS ON USING TABLES. SEE SHEET 4 FOR TYPICAL INSTALLATION METHODS & CLIP DETAILS.
- LINEAR INTERPOLATION BETWEEN LISTED WIDTHS AND SPANS IS ALLOWED.
- SEE THIS SHEET FOR SPECIFIC MULLION DIMENSIONS.
- SEE SHEET 3 FOR SPECIFIC BRACKET DIMENSIONS.
- ANCHOR REQUIREMENTS:
 - CMU: 1/4" SIMPSON STRONG-TIE TITEN ANCHOR
- INSTALLATION SUBSTRATES:
 - HOLLOW CMU ANCHORS SHALL HAVE A MIN. EMBEDMENT OF 1" & EDGE DISTANCE OF 2". HOLLOW CMU SHALL BE MEDIUM WEIGHT CONFORMING TO ASTM C 90.
- FOR MULL LENGTHS SHORTER THAN 60" USE VALUES FOR 60" LENGTH.
- DEFLECTIONS HAS BEEN LIMITED TO L/180.

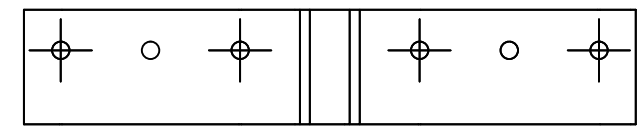


**2728
PART #230296**

QUALIFIED ANCHOR CLIPS



**MULLION ANCHOR BRACKET 50-2722 (PART #230297)
ALUMINUM (6063-T6)
FOR WOOD SCREW OR MULLION TO MULLION ANCHORING**



**MULLION ANCHOR BRACKET 50-2722 (PART #230297)
ALUMINUM (6063-T6)
FOR CMU ANCHORING**

AMERICAN CRAFTSMAN WINDOWS
PLY GEM WINDOWS
SILVER LINE WINDOWS AND DOORS

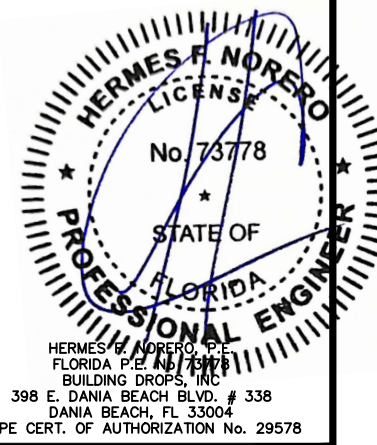
ONE SILVERLINE DRIVE
NORTH BRUNSWICK, NJ 08902
PH: (888) 741-0354

TITLE: **SERIES 2723 (PART #230295),
2724, 2728 (PART #230296)
(HVHZ) STRUCTURAL BEAM
MULLION (HVHZ) (IMPACT)
2728 MULLION LOAD TABLES-CMU ONLY**

PREPARED BY: **BUILDING DROPS, INC.**
398 E. DANIA BEACH BLVD., STE. 338
DANIA BEACH, FL 33004
PH: (954) 959-8478
FAX: (954) 744-4738
WEB: www.buildingdrops.com

REMARKS	BY	DATE
6TH FBC EDITION	AG	10/17
ELEVATIONS UPDATED	SM	6/19
7th FBC EDITION	LH	10/20
8th FBC EDITION	LH	09/23

THE INSTALLATION DETAILS DESCRIBED HEREIN ARE GENERIC AND MAY NOT REFLECT ACTUAL CONDITIONS FOR A SPECIFIC SITE. IF SITE CONDITIONS CAUSE INSTALLATION TO DEVIATE FROM THE REQUIREMENTS DETAILED HEREIN, A LICENSED ENGINEER OR ARCHITECT SHALL PREPARE SITE SPECIFIC DOCUMENTS FOR USE WITH THIS DOCUMENT.



FL #: **FL 6067**

DATE: **02/11/19**

DWG. BY: **HR** CHK. BY: **HFN**

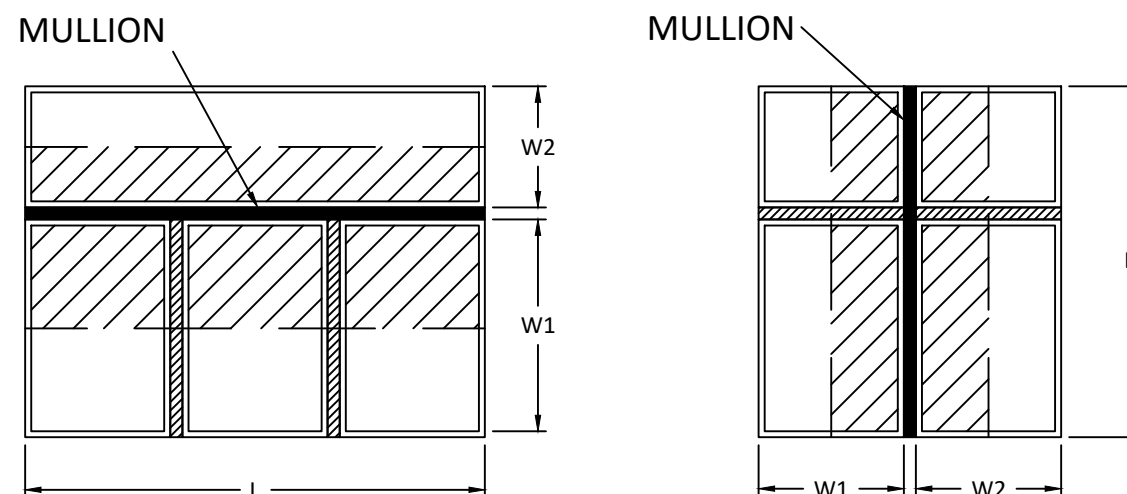
SCALE: **NTS**

DWG. #: **SWD015**

SHEET
14
OF 16

MAXIMUM DESIGN PRESSURE CAPACITY CHART (PSF): 2728 STRUCTURAL MULLIONS (TWO-WAY CONFIGURATIONS) - INSTALLATION TO WOOD, CONCRETE, ALUMINUM, OR STEEL

L - MULL LENGTH (IN)	W - TRIBUTARY WIDTH (IN)																												
	18.0	20.0	22.0	24.0	26.0	28.0	30.0	32.0	34.0	36.0	38.0	40.0	42.0	44.0	46.0	48.0	50.0	52.0	54.0	56.0	58.0	60.0	62.0	64.0					
60.0	100.0	100.0	100.0	100.0	100.0	100.0	100.0	100.0	100.0	100.0	100.0	100.0	100.0	100.0	100.0	100.0	100.0	100.0	100.0	100.0	100.0	99.3	96.0	92.9	90.0				
62.0	100.0	100.0	100.0	100.0	100.0	100.0	100.0	100.0	100.0	100.0	100.0	100.0	100.0	100.0	100.0	100.0	100.0	100.0	100.0	100.0	100.0	99.5	96.1	92.9	89.9	87.1			
64.0	100.0	100.0	100.0	100.0	100.0	100.0	100.0	100.0	100.0	100.0	100.0	100.0	100.0	100.0	100.0	100.0	100.0	100.0	100.0	100.0	100.0	96.4	93.1	90.0	87.1	84.4			
66.0	100.0	100.0	100.0	100.0	100.0	100.0	100.0	100.0	100.0	100.0	100.0	100.0	100.0	100.0	100.0	100.0	100.0	100.0	100.0	100.0	97.0	93.5	90.3	87.3	84.5	81.8			
68.0	100.0	100.0	100.0	100.0	100.0	100.0	100.0	100.0	100.0	100.0	100.0	100.0	100.0	100.0	100.0	100.0	100.0	100.0	100.0	100.0	97.7	94.1	90.8	87.6	84.7	82.0	79.4		
70.0	100.0	100.0	100.0	100.0	100.0	100.0	100.0	100.0	100.0	100.0	100.0	100.0	100.0	100.0	100.0	100.0	100.0	100.0	100.0	100.0	98.7	94.9	91.4	88.2	85.1	82.3	79.6	77.1	
72.0	100.0	100.0	100.0	100.0	100.0	100.0	100.0	100.0	100.0	100.0	100.0	100.0	100.0	100.0	100.0	100.0	100.0	100.0	100.0	100.0	99.0	95.2	91.7	88.5	85.4	82.3	79.6	77.1	
74.0	100.0	100.0	100.0	100.0	100.0	100.0	100.0	100.0	100.0	100.0	100.0	100.0	100.0	100.0	100.0	100.0	100.0	100.0	100.0	100.0	99.3	95.5	92.0	88.8	85.7	82.6	79.9	77.4	75.0



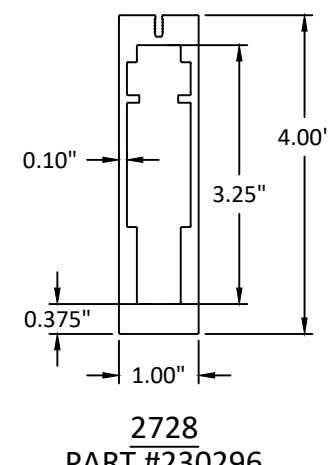
TRIBUTARY WIDTH = $\frac{W1+W2}{2}$

TWO-WAY MULLION DIAGRAMS

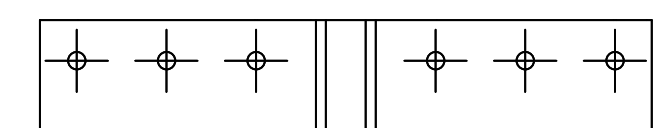
TABLE NOTES:

- SEE SHEET 1 FOR INSTRUCTIONS ON USING TABLES. SEE SHEET 4 FOR TYPICAL INSTALLATION METHODS & CLIP DETAILS.
- LINEAR INTERPOLATION BETWEEN LISTED WIDTHS AND SPANS IS ALLOWED.
- SEE THIS SHEET FOR SPECIFIC MULLION DIMENSIONS.
- SEE SHEET 3 FOR SPECIFIC BRACKET DIMENSIONS.
- ANCHOR REQUIREMENTS:
 - WOOD: #12 WOOD SCREWS
 - CONCRETE: 1/4" SIMPSON STRONG-TIE TITEN ANCHOR
 - METAL: #12 SELF-DRILLING SCREWS (GRADE 5)
- INSTALLATION SUBSTRATES:
 - WOOD ANCHORS SHALL HAVE A MIN. EMBEDMENT OF 1-1/2" & EDGE DISTANCE OF 0.75". WOOD SHALL BE MIN. S.G.=0.55.
 - CONCRETE ANCHORS SHALL HAVE A MIN. EMBEDMENT OF 1-3/4" & EDGE DISTANCE OF 2". CONCRETE SHALL BE MIN. 4000 PSI.
 - METAL ANCHORS SHALL HAVE A MIN. (3) THREADS PENETRATION BEYOND METAL STRUCTURE. STEEL SHALL BE MIN. 18 GA. (0.045" THICK) 33 KSI YIELD & ALUMINUM SHALL BE MIN. 0.1" THICK ALUMINUM 6063-T6 WITH MIN. EDGE DISTANCE OF 1" FOR BOTH ALUM. AND STEEL.
- FOR MULL LENGTHS SHORTER THAN 60" USE VALUES FOR 60" LENGTH.
- DEFLECTIONS HAS BEEN LIMITED TO L/180.

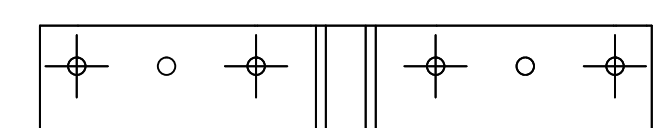
QUALIFIED ANCHOR CLIPS



2728
PART #230296



MULLION ANCHOR BRACKET 50-2722 (PART #230297)
ALUMINUM (6063-T6)
FOR WOOD SCREW OR MULLION TO MULLION ANCHORING



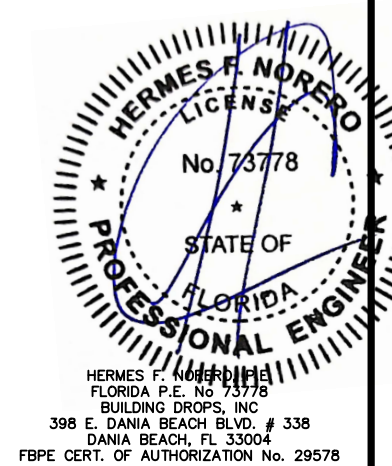
MULLION ANCHOR BRACKET 50-2722 (PART #230297)
ALUMINUM (6063-T6)
FOR CONCRETE ANCHORING

TITLE: SERIES 2723 (PART #230295),
2724, 2728 (PART #230296)
(HVHZ) STRUCTURAL BEAM
MULLION (HVHZ) (IMPACT)
2728 MULLION LOAD TABLES

PREPARED BY: BUILDING DROPS, INC.
398 E. DANIA BEACH BLVD., STE. 338
DANIA BEACH, FL 33004
PH: (954) 399-6478
FAX: (954) 744-4738
WEB: www.buildingdrops.com

REMARKS	BY	DATE
6TH FBC EDITION	AG	10/17
ELEVATIONS UPDATED	SM	6/19
7th FBC EDITION	LH	10/20
8th FBC EDITION	LH	09/23

THE INSTALLATION DETAILS DESCRIBED HEREIN ARE GENERIC AND MAY NOT REFLECT ACTUAL CONDITIONS FOR A SPECIFIC SITE. IF SITE CONDITIONS CAUSE INSTALLATION TO DEVIATE FROM THE REQUIREMENTS DETAILED HEREIN, A LICENSED ENGINEER OR ARCHITECT SHALL PREPARE SITE SPECIFIC DOCUMENTS FOR USE WITH THIS DOCUMENT.



HERMES F. NORERO
FLORIDA P.E. No. 73778
BUILDING DROPS, INC.
398 E. DANIA BEACH BLVD. # 338
DANIA BEACH, FL 33004
FBPE CERT. OF AUTHORIZATION No. 29578

FL #: **FL 6067**

DATE: **02/11/19**

DWG. BY: **HR** | CHK. BY: **HFN**

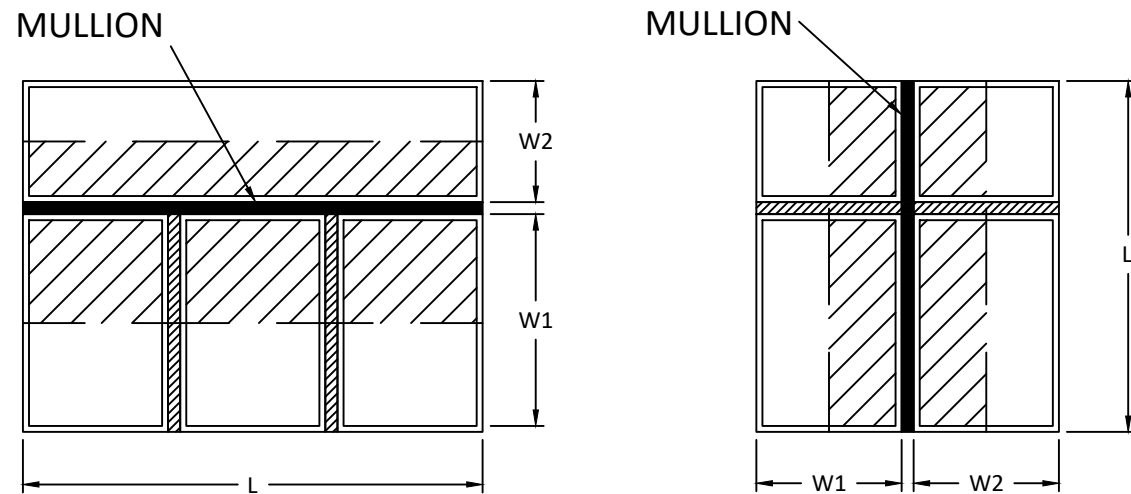
SCALE: **NTS**

DWG. #: **SWD015**

SHEET **15** OF 16

MAXIMUM DESIGN PRESSURE CAPACITY CHART (PSF): 2728 STRUCTURAL MULLIONS (TWO-WAY CONFIGURATIONS) - INSTALLATION TO CMU

L - MULL LENGTH (IN)	W - TRIBUTARY WIDTH (IN)																								
	18.0	20.0	22.0	24.0	26.0	28.0	30.0	32.0	34.0	36.0	38.0	40.0	42.0	44.0	46.0	48.0	50.0	52.0	54.0	56.0	58.0	60.0	62.0	64.0	
60.0	100.0	100.0	100.0	100.0	100.0	100.0	100.0	100.0	100.0	100.0	94.7	90.0	85.7	81.8	78.3	75.0	72.0	69.2	66.7	64.3	62.1	60.0	58.1	56.3	
62.0	100.0	100.0	100.0	100.0	100.0	100.0	100.0	100.0	100.0	100.0	96.8	91.7	87.1	82.9	79.2	75.7	72.6	69.7	67.0	64.5	62.2	60.1	58.1	56.2	54.4
64.0	100.0	100.0	100.0	100.0	100.0	100.0	100.0	100.0	100.0	99.3	93.8	88.8	84.4	80.4	76.7	73.4	70.3	67.5	64.9	62.5	60.3	58.2	56.3	54.4	52.7
66.0	100.0	100.0	100.0	100.0	100.0	100.0	100.0	100.0	100.0	96.3	90.9	86.1	81.8	77.9	74.4	71.1	68.2	65.5	62.9	60.6	58.4	56.4	54.5	52.8	51.1
68.0	100.0	100.0	100.0	100.0	100.0	100.0	100.0	99.3	93.4	88.2	83.6	79.4	75.6	72.2	69.1	66.2	63.5	61.1	58.8	56.7	54.8	52.9	51.2	49.6	48.2
70.0	100.0	100.0	100.0	100.0	100.0	100.0	100.0	96.4	90.8	85.7	81.2	77.1	73.5	70.1	67.1	64.3	61.7	59.3	57.1	55.1	53.2	51.4	49.8	48.2	46.9
72.0	100.0	100.0	100.0	100.0	100.0	100.0	100.0	93.8	88.2	83.3	78.9	75.0	71.4	68.2	65.2	62.5	60.0	57.7	55.6	53.6	51.7	50.0	48.4	46.9	45.6
74.0	100.0	100.0	100.0	100.0	100.0	100.0	97.3	91.2	85.9	81.1	76.8	73.0	69.5	66.3	63.5	60.8	58.4	56.1	54.1	52.1	50.3	48.6	47.1	45.6	44.2

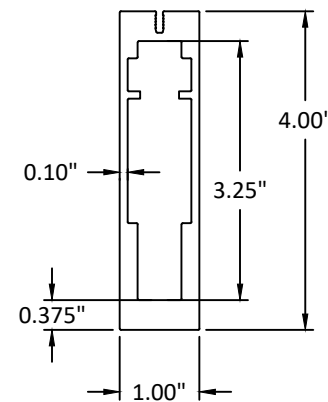


TRIBUTARY WIDTH = $\frac{W1+W2}{2}$

TWO-WAY MULLION DIAGRAMS

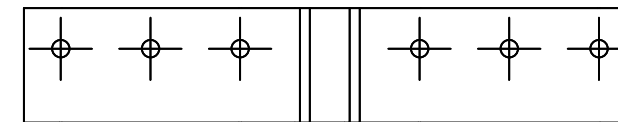
TABLE NOTES:

- SEE SHEET 1 FOR INSTRUCTIONS ON USING TABLES. SEE SHEET 4 FOR TYPICAL INSTALLATION METHODS & CLIP DETAILS.
- LINEAR INTERPOLATION BETWEEN LISTED WIDTHS AND SPANS IS ALLOWED.
- SEE THIS SHEET FOR SPECIFIC MULLION DIMENSIONS.
- SEE SHEET 3 FOR SPECIFIC BRACKET DIMENSIONS.
- ANCHOR REQUIREMENTS:
 - CMU: 1/4" SIMPSON STRONG-TIE TITEN ANCHOR
- INSTALLATION SUBSTRATES:
 - HOLLOW CMU ANCHORS SHALL HAVE A MIN. EMBEDMENT OF 1" & EDGE DISTANCE OF 2". HOLLOW CMU SHALL BE MEDIUM WEIGHT CONFORMING TO ASTM C 90.
- FOR MULL LENGTHS SHORTER THAN 60" USE VALUES FOR 60" LENGTH.
- DEFLECTIONS HAS BEEN LIMITED TO L/180.

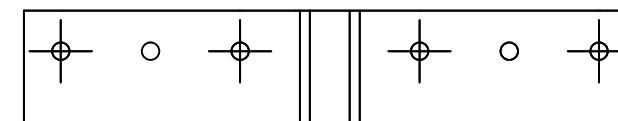


**2728
PART #230296**

QUALIFIED ANCHOR CLIPS



**MULLION ANCHOR BRACKET 50-2722 (PART #230297)
ALUMINUM (6063-T6)
FOR WOOD SCREW OR MULLION TO MULLION ANCHORING**



**MULLION ANCHOR BRACKET 50-2722 (PART #230297)
ALUMINUM (6063-T6)
FOR CMU ANCHORING**

AMERICAN CRAFTSMAN WINDOWS
PLY GEM WINDOWS
SILVER LINE WINDOWS AND DOORS

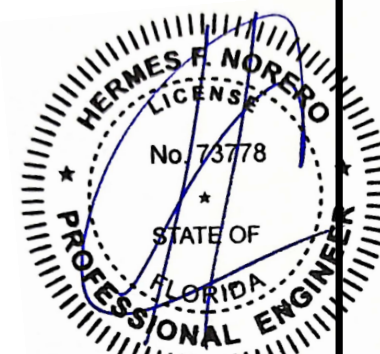
ONE SILVERLINE DRIVE
NORTH BRUNSWICK, NJ 08902
PH: (888) 741-0354

TITLE: **SERIES 2723 (PART #230295),
2724, 2728 (PART #230296)
(HVHZ) STRUCTURAL BEAM
MULLION (HVHZ) (IMPACT)
2728 MULLION LOAD TABLES - CMU ONLY**

PREPARED BY: **BUILDING DROPS, INC.**
398 E. DANIA BEACH BLVD., STE. 338
DANIA BEACH, FL 33004
PH: (954) 399-6478
FAX: (954) 744-4738
WEB: www.buildingdrops.com

REMARKS	BY	DATE
6TH FBC EDITION	AG	10/17
ELEVATIONS UPDATED	SM	6/19
7th FBC EDITION	LH	10/20
8th FBC EDITION	LH	09/23

THE INSTALLATION DETAILS DESCRIBED HEREIN ARE GENERIC AND MAY NOT REFLECT ACTUAL CONDITIONS FOR A SPECIFIC SITE. IF SITE CONDITIONS CAUSE INSTALLATION TO DEVIATE FROM THE REQUIREMENTS DETAILED HEREIN, A LICENSED ENGINEER OR ARCHITECT SHALL PREPARE SITE SPECIFIC DOCUMENTS FOR USE WITH THIS DOCUMENT.



HERMES F. NORERO
FLORIDA P.E. No. 73778
BUILDING DROPS, INC.
398 E. DANIA BEACH BLVD. # 338
DANIA BEACH, FL 33004
FBPE CERT. OF AUTHORIZATION No. 29578

FL #: **FL 6067**

DATE: **02/11/19**

DWG. BY: **HR** CHK. BY: **HFN**

SCALE: **NTS**

DWG. #: **SWD015**

SHEET **16**