

1 Course 14" Exposure Panels

For 16" or 24" O.C. Studs or Rafters

Hurricane Nailing Instructions



FIRST DETERMINE CORNER TYPE:

With Flush-mounting corners or corner board, install corner first. Double wrap corners with building paper. Use two **8D** Maze brand ring shank siding nail per corner side, 1.5" down from top & 2" up from the bottom, centered on each side. Alternate the "left" and "right" corner units provided. Caulk corner plywood edges well. Trim panel end and push against caulked corner edge. Nail panel as per instructions below. (No starter course is needed.)

Flush 90 Corners



Add-On 90 Corners



With Add-on corners, install all panels first, positioning so that panel ends are flush with corner without overlap. (Panel ends do not need to be trimmed.) Nail panel as per instructions below. Apply corners using one nail per corner side, 1" down from top course only. Add-on corners require starter pieces made on-site from individual shingles. Apply appropriate building paper under panels as per local code requirements. Double wrap corners.

PANEL APPLICATION:

Plan panel layout from lowest building corner after determining corner style to be used. Panels must be applied directly over nailable shear sheathing applied over studs, 16" O.C. A code approved building paper, must be applied directly behind the panels. Panels must span at least one stud spacing and vertical end joints must be staggered to join at studs. Horizontal scribed guidelines on Even Buttline panels enable proper alignment of succeeding panels without measuring or leveling every panel. For Staggered buttline panels check every 3rd - 4th course for level.

See Figure #2 for nail placement.

NOTE: Panels do not meet shear requirements!

NAILING INSTRUCTIONS:

Use two **Maze** brand #S-227-A (or SS-8-WS stainless steel) ring shank siding nails every stud (16" or 24" O.C.). Nail the panels 1.5" down from top & 2" up from the bottom (see Fig #2) **STARTING** ½ inch in from one edge and working across the panel. Never nail from both edges towards the middle. Each nail **MUST** hit the 2X4 stud or a second nail must be added. Nail head should be flush with the surface of the panel. There is no need to nail other areas unless the panel has been cut horizontally or diagonally (for window, door, gable, etc.), then the tops of each cut shingle must be restapled at the corners or secured with molding. Panel ends have to join on studs or rafters, and the nails holding panels must be driven into studs! **Do Not Overdrive Nails!**

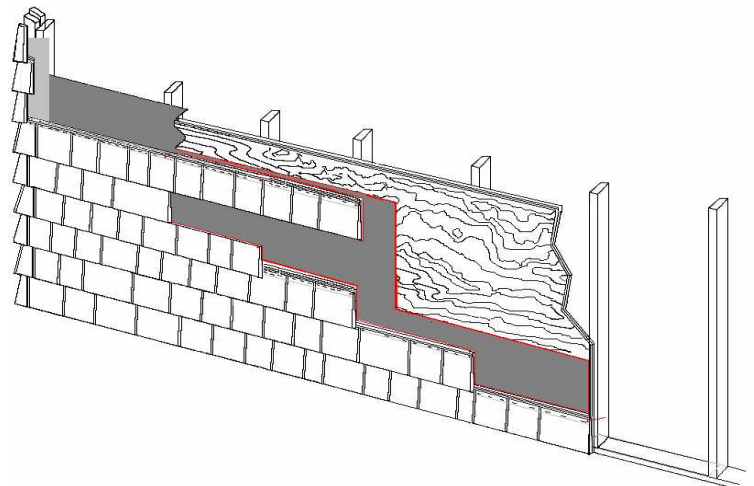
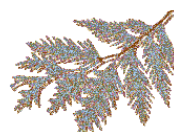
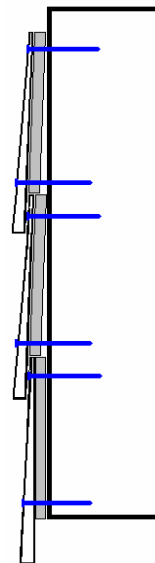


Figure #2



CEDAR VALLEY
Handcrafted Shingle Panels

1 Course 14" Exposure Panels

For 16" or 24" O.C. Studs or Rafters

Hurricane Nailing Instructions

CVAI-207 Rev.1/07

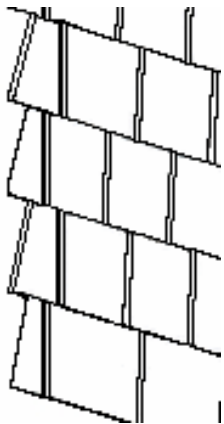
1 Course 14" Exposure Panels

For 16" or 24" O.C. Studs or Rafters

Hurricane Nailing Instructions

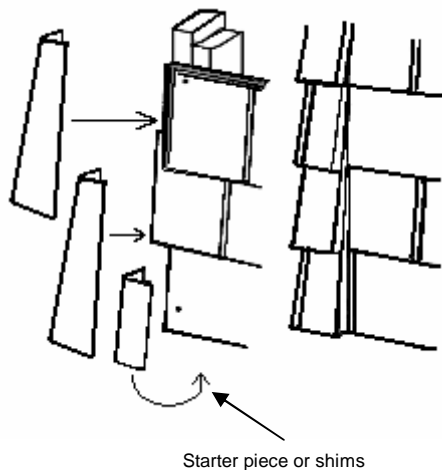
FLUSH CORNERS:

Flush-mounting corner units are: pre-fabricated of No. 1 Grade Western Red Cedar shingles stapled to undercourse corners of overlapped 11/32" plywood. The Boston hip alternating lap corner construction is used (rather than mitered corners) where the corner overlap alternates with each course. Flush-mounting Corner units are manufactured and supplied in "left" and "right" alternating widths so that the vertical corner line is eliminated.

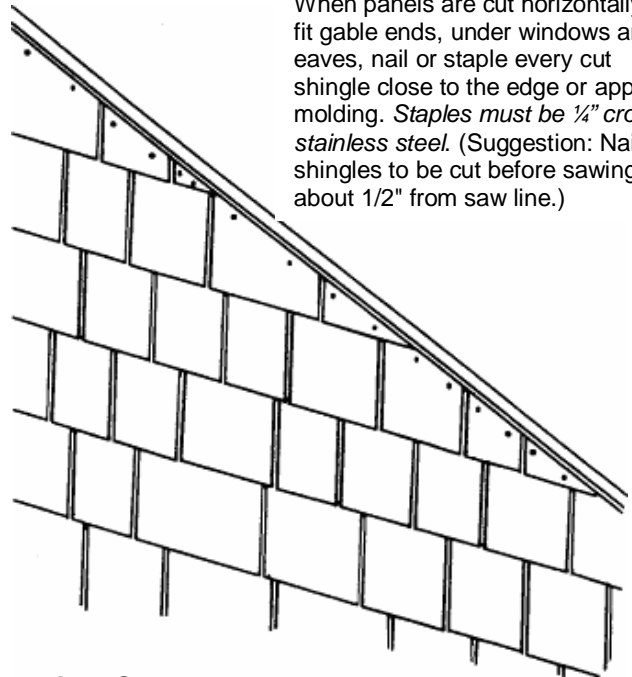


ADD-ON CORNERS:

Add-on corner units are pre-fabricated of No. 1 Grade Western Red Cedar shingles using the Boston hip alternating lap corner construction with the alternating overlap. **One-course starter corners must be made on site for Add-on corners.**



When panels are cut horizontally to fit gable ends, under windows and eaves, nail or staple every cut shingle close to the edge or apply molding. *Staples must be 1/4" crown stainless steel.* (Suggestion: Nail shingles to be cut before sawing, about 1/2" from saw line.)



Inside Corners:

Nail a 1-1/2"x 1-1/2" wood strip into the inside corner and caulk sufficiently where the plywood backer will butt against it. Trim panel end square and set panel against the strip. **Use caution that caulk does not squeeze out onto face of panel!**

