

# WOLTERS ENGINEERING

ENGINEERING, DRAFTING, CONSULTING

15211 97<sup>th</sup> Road N  
West Palm Beach, FL 33412  
Ph/Fx: (561) 225-1982

## **PRODUCT EVALUATION** **(FOR HVHZ APPROVED PRODUCT)**

PRODUCT: **1<sup>ST</sup> COAST 24 GA. GALVALUME PBR ROOF PANEL, 36" WIDE**  
(FLPA# 36968.2)

MANUFACTURER: 1<sup>ST</sup> COAST METAL ROOFING SUPPLY  
186 STATE ROAD 207  
EAST PALATKA, FL 32131

To all concerned,

The 1<sup>ST</sup> Coast 24 Ga. 36" Wide Galvalume PBR Roof Panel, manufactured by 1<sup>ST</sup> Coast Metal Supply, is a non-structural galvalume coated Fluoropolymer painted steel roof panel (50 ksi min) that meets the requirements of Sections 1507.4 and 1518.9 of the 8<sup>th</sup> Edition (2023) Florida Building Code. The panel has been tested per TAS 100, TAS 125, and TAS 201 by Intertek, with results shown in test reports L4914.06-450-18, L4914.07-450-18, and L4914.08-450-18. It has also been tested per TAS 110 by PRI Construction Materials Technologies, with results shown in test reports VLS-004-02-01 and VLS-005-02-01. I have reviewed the TAS 100 testing above and it is equivalent to TAS 100-23.

### Technical Documentation:

1. Drawing "1CPBR-HZ" dated 10/9/23 (Rev. 1), signed and sealed by Scott Wolters, PE.
2. Test Reports listed above by Intertek, signed and sealed by Vinu Abraham, PE.
3. Test Reports listed above by PRI Construction Materials Technologies, signed and sealed by Zachary R Priest, PE.
4. Supplemental Calculations to support "1CPBR-HZ", signed and sealed by Scott Wolters, PE.

I have reviewed this submittal per the requirements of FAC Product Approval Rule Chapter 61G20-3.005 (4). Based on the limitations listed below and those provided in the documents above, this product meets all the requirements of the 8<sup>th</sup> Edition (2023) Florida Building Code generally, and chapter 15 specifically, including the HVHZ provisions.

Limitations: **This panel is approved for use inside and outside of the HVHZ.**

<u>Overall Limitations:</u>	Maximum Panel Width:	36"	
	Minimum Rib Height:	1 1/8"	
	Min. Slope:	HVHZ:	2"/12"
		Non-HVHZ:	1/2"/12"
	Max. Purlin Spacing:	60" O.C.	
	Min. Purlin Thickness:	16 Ga	

	Field Installation	Perimeter & Corner Installation
Max. Design Pressure:	-62.5 psf	-130 psf
Panel Fasteners:	#10x1 1/2" HiLo HWH Screws	#10x1 1/2" HiLo HWH Screws
Fastener Spacing (Across Panel)	12" Max. O.C. Beside Each Rib	5"-7"-5" Pattern Each Side of Ribs
Seam Fasteners and Sealant:	#10x3/4" HiLo HWH Screws 12" Max. O.C, with Butyl Tape	#10x3/4" HiLo HWH Screws 12" Max. O.C, with Butyl Tape.
Fasteners at Panel Butt-Joints	#10x1 1/2" HiLo HWH Screws 3" Max. O.C, with Butyl Tape	#10x1 1/2" HiLo HWH Screws 3" Max. O.C, with Butyl Tape
	(Panels are lapped 2")	(Panels are lapped 2")

Minimum Substrate: 16 Ga. Steel Purlins, spaced 60" max. O.C.

Other Limitations:

1. Roof slope must meet requirements of FBC Sections 1507.4.2 or 1515.2.
2. Fire classification is not a part of this evaluation. Refer to a current Approved Roofing Materials Directory for fire ratings of this product.
3. Design of substrate is by others and is not a part of this evaluation.
4. Rational analysis, provided by a Florida licensed Architect/Engineer per FAS 61G20.3.005(e), may be used for project specific approval by the local authorities having jurisdiction.

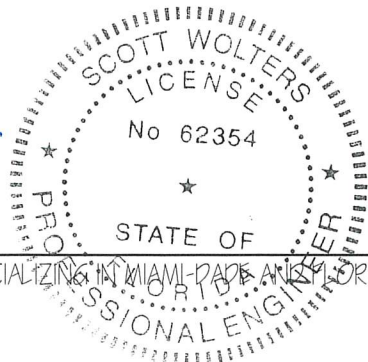
Re-Roofing: The 36" Wide 1<sup>ST</sup> Coast 24 Ga. Galvalume PBR Roof Panel may be installed over a single layer of PBR Panels, provided the existing roof meets the requirements of Section 1511 of the Florida Building Code.

Note: If installed over existing panels, the existing screws and any debris must be removed from The existing roof. Any corrosion in the existing roof must be treated per FBC 1521.8.

If you have any questions or need more information concerning this approval, please contact me.

Thank you,

  
 Scott Wolters  
 FL PE# 62354



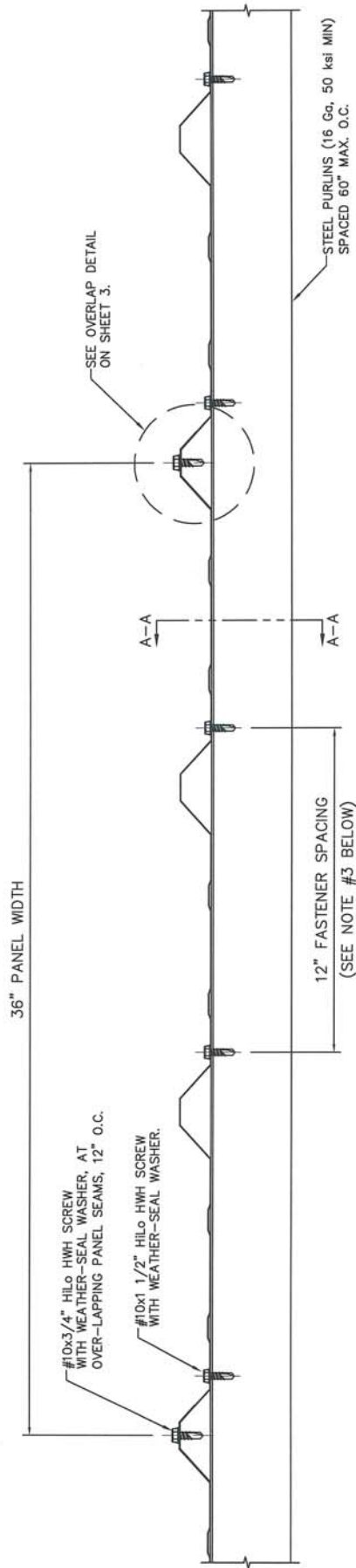
OCT 09 2023

SPECIALIZING IN MIAMI-DADE AND FLORIDA PRODUCT APPROVALS FOR ROOFING & GLAZING PRODUCTS

# 1ST COAST 24 Ga. STEEL PBR ROOF PANEL - HVHZ

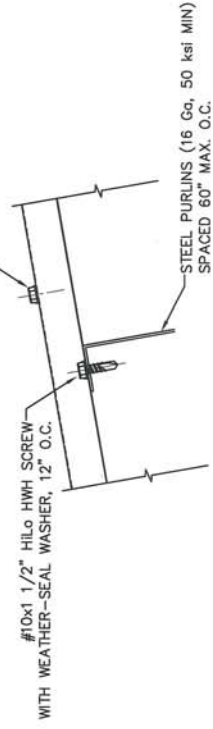
36" RIBBED ROOF PANEL INSTALLED DIRECTLY OVER STEEL PURLINS  
OR INSTALLED OVER EXISTING PBR PANEL OVER STEEL PURLINS

## FIELD INSTALLATION



MAX UPLIFT PRESSURE
62.5 Psf

#10x3/4" HILO HWH SCREW  
WITH WEATHER-SEAL WASHER AT  
OVER-LAPPING PANEL SEAMS, 12" O.C.



### SECTION A-A

#### GENERAL NOTES:

- PBR PANEL MAY BE INSTALLED DIRECTLY TO STEEL PURLINS, OR INSTALLED OVER EXISTING PBR PANELS. IF INSTALLED OVER EXISTING PANELS, THE EXISTING SCREWS AND ANY DEBRIS MUST BE REMOVED FROM THE EXISTING ROOF. ANY CORROSION IN THE EXISTING ROOF MUST BE TREATED WITH A RUST INHIBITOR PER FBC 1521.8.
- AT PANEL BUTT JOINTS, PANELS ARE OVERLAPPED 2", SEALED WITH BUTYL TAPE, AND FASTENED WITH #10x1 1/2" HILO HWH SCREWS 3" O.C.
- ROOF SLOPE IS LIMITED PER THE REQUIREMENTS OF FBC SECTION 1507.4.2.
- FLASHING AND TRIM TO BE INSTALLED PER THE MANUFACTURER'S STANDARD INSTALLATION DETAILS, TO MEET THE REQUIREMENTS OF FBC SECTION 1503.

REV.#	DATE	PRINTS ISSUED FOR
1	10/9/23	2023 CODE UPDATE
1	12/21/20	1ST SUBMITTAL

SCOTT WOLTERS  
FL P.E.# 62354

WOLTERS ENGINEERING  
(CO.# 27194)  
15211 97TH ROAD, FL 33412  
WEST PALM BEACH, FL 33412  
(561) 225-1982

PROFESSIONAL ENGINEER  
STATE OF FLORIDA  
08109 023

SEAL NO 62354

1ST COAST METAL ROOFING SUPPLY  
PH: (561) 629-7288  
WWW.1STCOASTMRS.COM

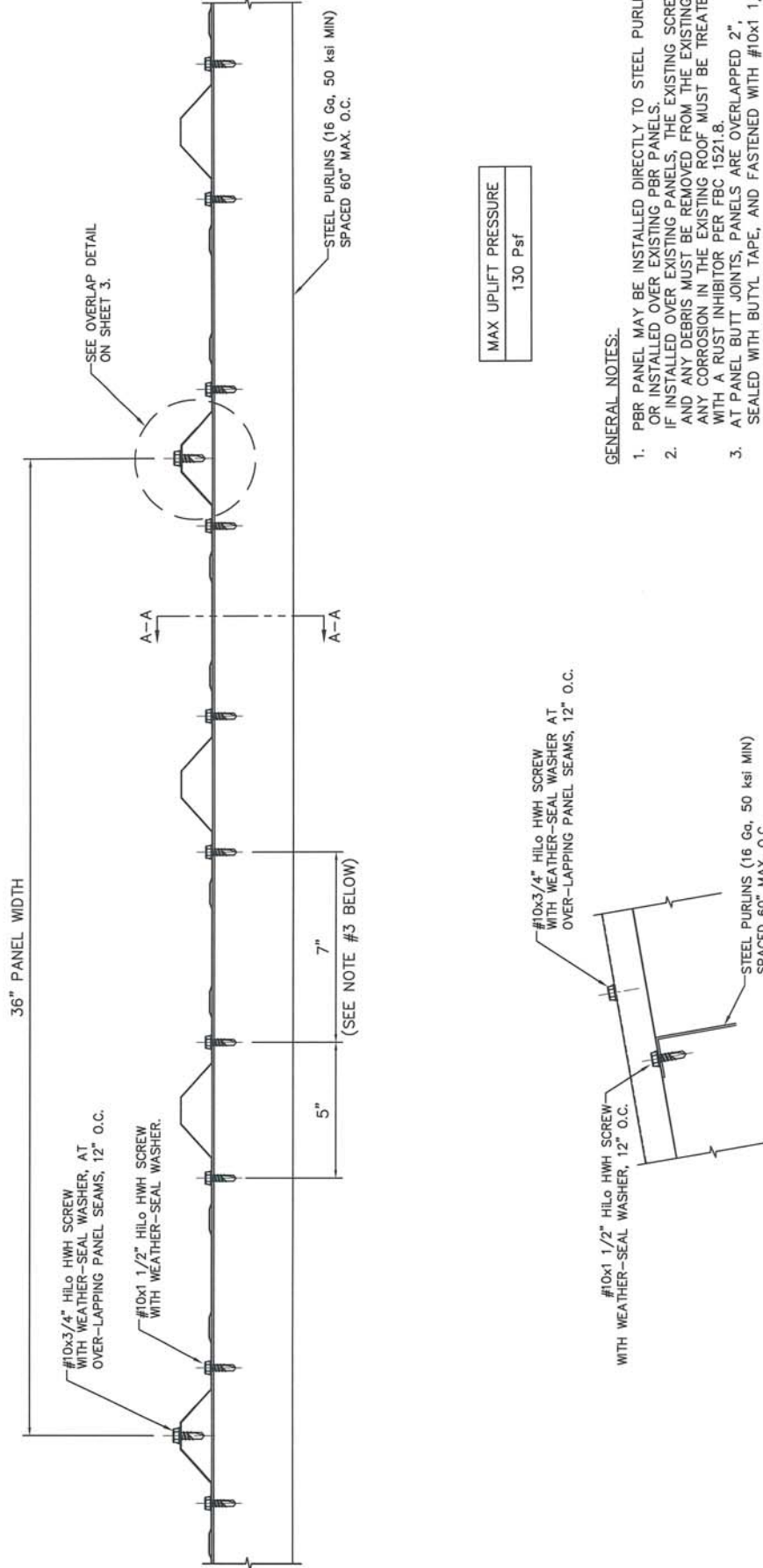
1ST COAST METAL ROOFING SUPPLY  
186 STATE ROAD 207  
EAST PALATKA, FL 32131

DWG: 1CPBR-HZ  
SHEET: 1/3

# 1ST COAST 24 Ga. STEEL PBR ROOF PANEL - HVHZ

36" RIBBED ROOF PANEL INSTALLED DIRECTLY OVER STEEL PURLINS  
OR INSTALLED OVER EXISTING PBR PANEL OVER STEEL PURLINS

## PERIMETER & CORNER INSTALLATION



MAX UPLIFT PRESSURE	130 Psf
---------------------	---------

### GENERAL NOTES:

1. PBR PANEL MAY BE INSTALLED DIRECTLY TO STEEL PURLINS, OR INSTALLED OVER EXISTING PBR PANELS.
2. IF INSTALLED OVER EXISTING PANELS, THE EXISTING SCREWS AND ANY DEBRIS MUST BE REMOVED FROM THE EXISTING ROOF. ANY CORROSION IN THE EXISTING ROOF MUST BE TREATED WITH A RUST INHIBITOR PER FBC 1521.8.
3. AT PANEL BUTT JOINTS, PANELS ARE OVERLAPPED 2", SEALED WITH BUTYL TAPE, AND FASTENED WITH #10x1 1/2" HILO HWH SCREWS 3" O.C.
4. ROOF SLOPE IS LIMITED PER THE REQUIREMENTS OF FBC SECTION 1507.4.2.
5. FLASHING AND TRIM TO BE INSTALLED PER THE MANUFACTURER'S STANDARD INSTALLATION DETAILS, TO MEET THE REQUIREMENTS OF FBC SECTION 1503.

### SECTION A-A

SCOTT WOLTERS  
FL PE# 62354  
WOLTERS ENGINEERING  
(CO# 27194)  
15211 97TH ROAD N  
WEST PALM BEACH, FL 33412  
(561) 225-1982

PROFESSIONAL ENGINEER  
STATE OF FLORIDA  
No. 62354

PRINTS ISSUED FOR  
10/9/23  
12/21/20  
REV.# DATE

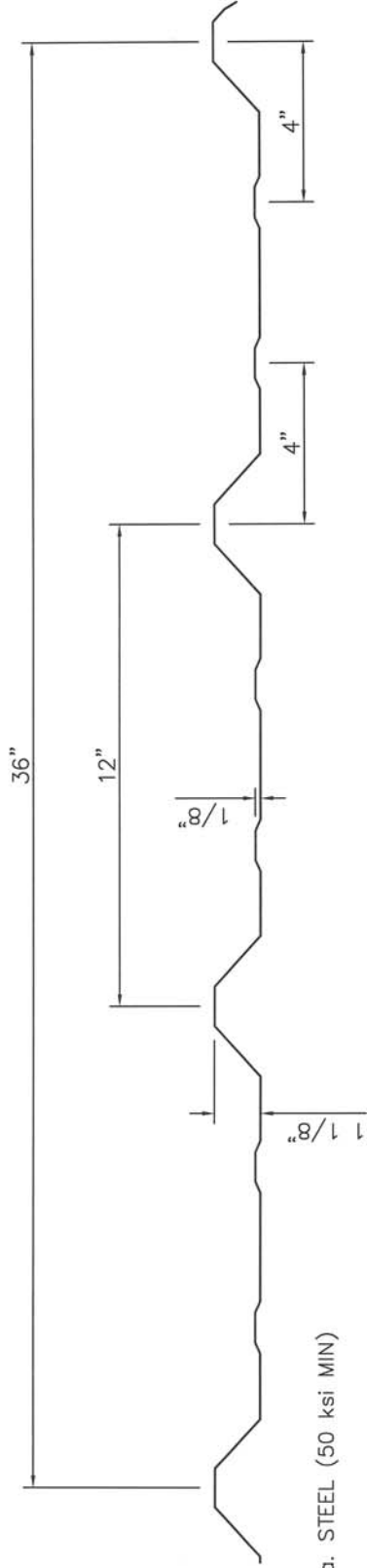
1ST COAST METAL ROOFING SUPPLY  
PH: (561) 629-7288  
WWW.1STCOASTMRS.COM

186 STATE ROAD 207  
EAST PALATKA, FL 32131

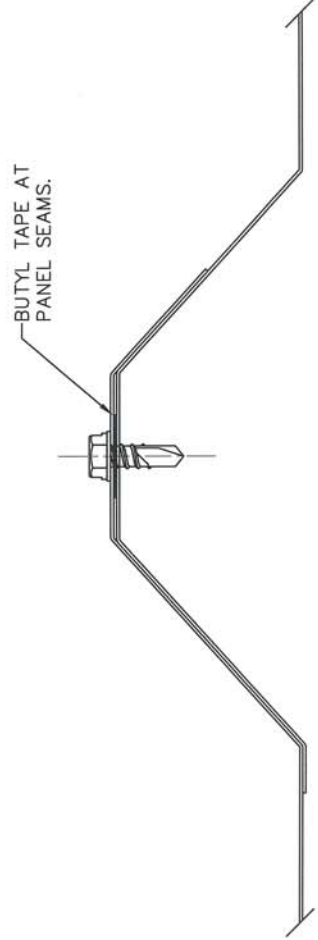
1ST COAST METAL ROOFING SUPPLY  
DWG: ICPBR-HZ  
SHEET: 2/3

**1ST COAST 24 Ga. STEEL PBR ROOF PANEL - HVHZ**

36" RIBBED ROOF PANEL INSTALLED DIRECTLY OVER STEEL PURLINS  
OR INSTALLED OVER EXISTING PBR PANEL OVER STEEL PURLINS



24 Ga. STEEL (50 ksi MIN)



OVERLAP DETAIL  
(1 RIB)

1ST COAST METAL ROOFING SUPPLY

PH: (561) 629-7288  
www.1stcoastmrs.com

186 STATE ROAD 207  
EAST PALATKA, FL 32131

1ST COAST METAL ROOFING SUPPLY  
DWG: 1CPBR-HZ  
SHEET: 3/3



REV.#	DATE	PRINTS ISSUED FOR
1	10/9/23	2023 CODE UPDATE
	12/21/20	1ST SUBMITTAL