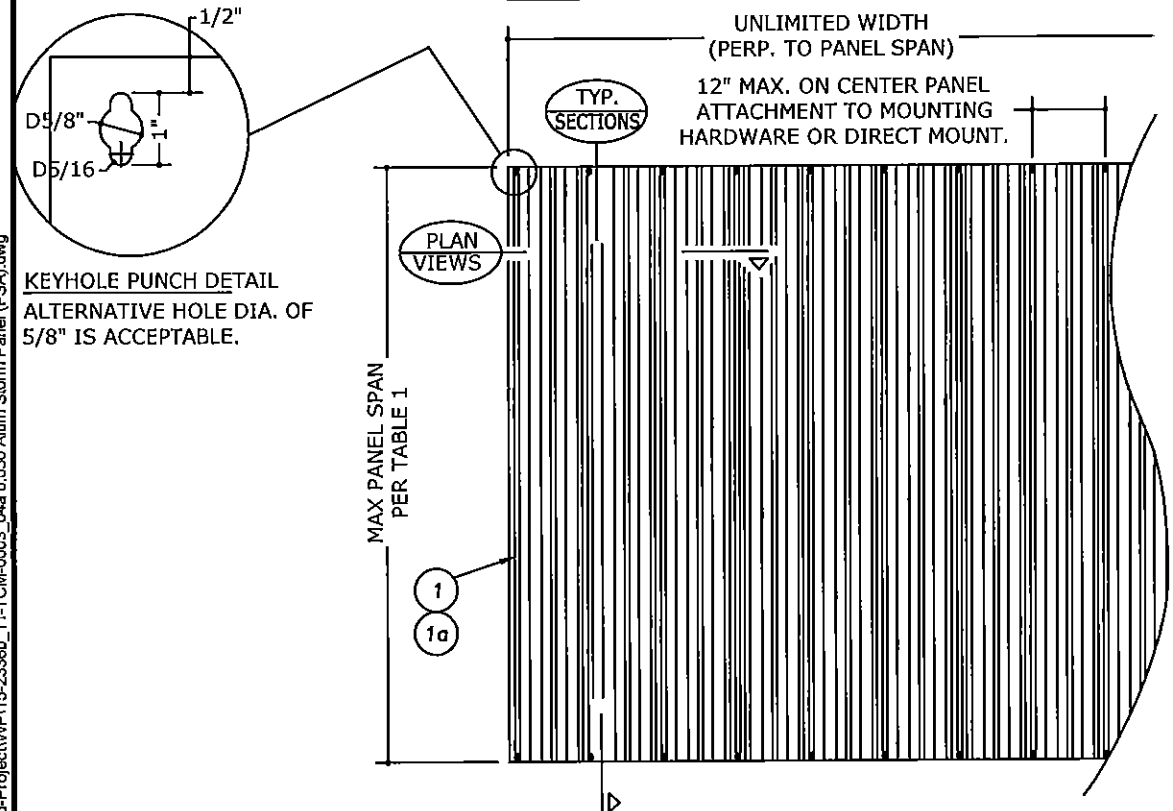


0.050" ALUMINUM STORM PANEL

FOR USE OUTSIDE THE HVHZ



NOTE: TOP MAY BE SLOPED OR RADIUS TO MATCH GEOMETRY OF OPENING. MOUNTING HARDWARE MUST BE ROLL-FORMED TO THE RADIUS; NO NOTCHING OF MOUNTING HARDWARE TO ACHIEVE SHAPES IS ALLOWED.

TYPICAL ELEVATION WITH ALUMINUM PANELS ONLY

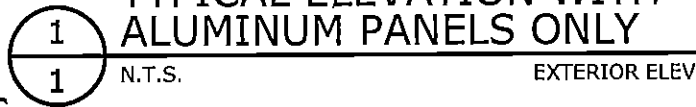


TABLE 1 ALLOWABLE SPAN SCHEDULE (WITH ALUMINUM PANELS ONLY)		
PANEL SPAN	ALLOWABLE DESIGN PRESSURE	
144"	+ 33.0 PSF	- 35.0 PSF
138"	+ 35.9 PSF	- 38.1 PSF
132"	+ 39.3 PSF	- 41.7 PSF
126"	+ 43.1 PSF	- 45.7 PSF
120"	+ 47.5 PSF	- 50.4 PSF
114"	+ 52.7 PSF	- 55.8 PSF
108"	+ 58.7 PSF	- 62.2 PSF
102"	+ 65.8 PSF	- 69.8 PSF
96"	+ 74.3 PSF	- 75.0 PSF
90"	+ 80.0 PSF	- 80.0 PSF
84"	+ 85.7 PSF	- 85.7 PSF
78"	+ 92.3 PSF	- 92.3 PSF
72"	+ 100.0 PSF	- 100.0 PSF
66"	+ 109.1 PSF	- 109.1 PSF
60"	+ 120.0 PSF	- 120.0 PSF

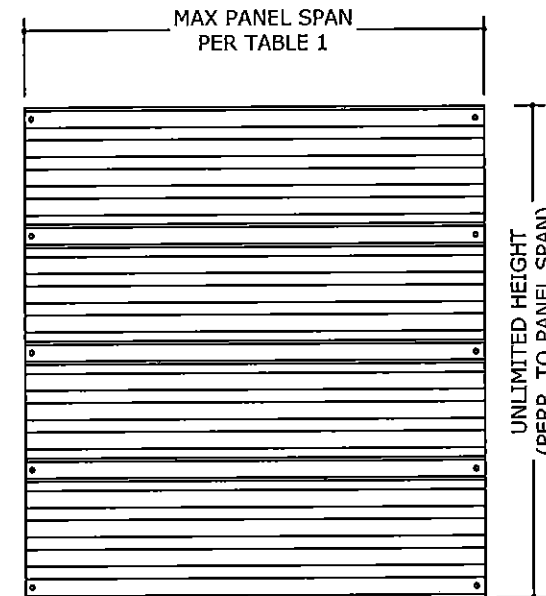
TABLE 1 NOTES:

- LINEAR INTERPOLATION BETWEEN SHUTTER SPANS IS NOT PERMITTED. FOR SPANS BETWEEN THOSE INDICATED ABOVE, THE DESIGN PRESSURES FOR THE NEXT HIGHER SPAN SHALL BE USED.
- DESIGN PRESSURES NOTED IN TABLE 1 APPLY TO ALL MOUNTING AND ANCHORAGE CONDITIONS AND SHALL NOT BE EXCEEDED.

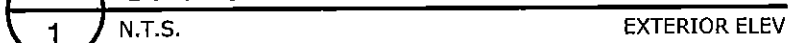
TABLE 2 MINIMUM GLAZING SEPARATION WITH ALUMINUM PANELS ONLY (ESSENTIAL FACILITIES ONLY)		
PANEL SPAN	INSTALLATIONS ≤ 30' ABOVE GRADE	INSTALLATIONS > 30' ABOVE GRADE
144"	6.4"	3.9"
138"	6.4"	3.8"
132"	6.4"	3.7"
126"	6.4"	3.5"
120"	6.4"	3.4"
114"	6.4"	3.3"
108"	6.4"	3.1"
96"	3.5"	2.9"
90"	3.5"	2.6"
84"	3.5"	2.4"
78"	3.5"	2.2"
72"	3.5"	2.0"
66"	3.5"	1.8"
60"	3.5"	1.7"

TABLE 2 NOTES:

- SEPARATION FROM GLAZING IS REQUIRED **ONLY** IN ESSENTIAL FACILITIES.
- LINEAR INTERPOLATION BETWEEN SHUTTER SPANS IS NOT PERMITTED. FOR SPANS BETWEEN THOSE INDICATED ABOVE, THE SEPARATION FROM GLASS FOR THE NEXT HIGHER SPAN SHALL BE USED.
- SEPARATION FROM GLAZING NOT REQUIRED FOR WIND ZONE 4 UNLESS INDEPENDENTLY ADOPTED BY LOCAL JURISDICTION



OPTIONAL HORIZONTAL MOUNT



04/17/2015 - 9:56am intern1 V:\Projects\15-2336 0.050 Aluminum Storm Panel - FSA - Update FL12856.1 for 2014 Florida Bid-Project\WP15-2336b_11-TCH-0003_04a 0.050 Alum Storm Panel (FSA).dwg

FRANK L. BENNARDO, P.E.
 PROFESSIONAL ENGINEER
 No. 46549
 160 SW 12th Avenue, Suite 33442
 Deerfield Beach, FL 33442
 Ph: (954) 354-0660 Fax: (954) 354-0443
 WWW.ENGEXPRESS.COM
 CERT OF AUTH #9885
 A FRANK L. BENNARDO, P.E., INC. INNOVATION

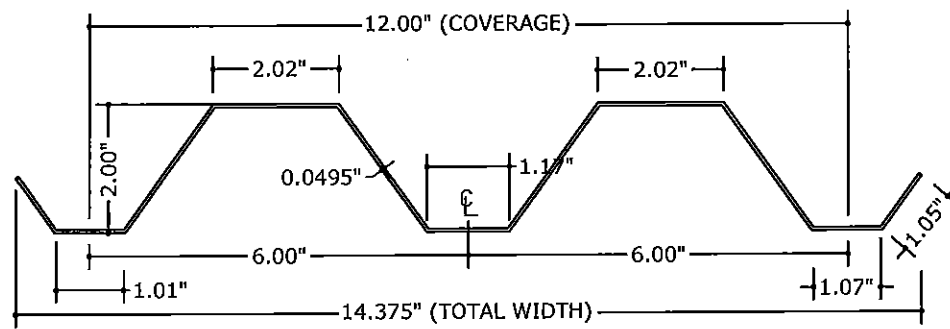
Town & Country
 INDUSTRIES
 Wholesale Aluminum and Building Products
 A Division of Aps Supply Co., Inc.
 400 WEST MCNAB ROAD
 FT. LAUDERDALE, FL 33309
 FL12856.1

REMARKS	DRWN	CHKD	DATE
INIT ISSUE	KL	FLB	06/03/11
2010 FBC	CSL	KL	12/16/11
CLIENT REVISIONS	KL	FLB	10/25/13
2014 FBC (11-TCH-0003)	RWN	CSL	03/13/15

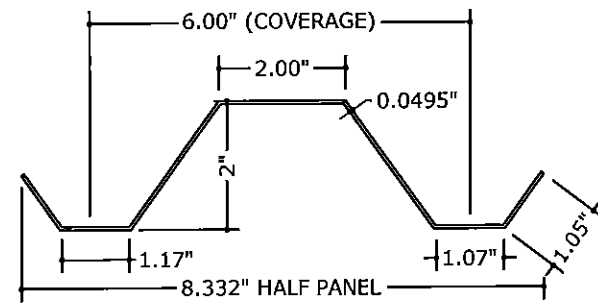
THIS DOCUMENT IS THE PROPERTY OF FRANK L. BENNARDO, P.E. AND SHALL NOT BE REPRODUCED OR TRANSMITTED IN ANY FORM OR BY ANY MEANS, ELECTRONIC OR MECHANICAL, INCLUDING PHOTOCOPYING, RECORDING, OR BY ANY INFORMATION STORAGE AND RETRIEVAL SYSTEM. WITHOUT THE WRITTEN PERMISSION OF FRANK L. BENNARDO, P.E., ALL REVISIONS, ADDITIONS, DELETIONS, OR OTHER MODIFICATIONS TO THIS DOCUMENT ARE NOT PERMITTED AND INVALIDATE OUR CERTIFICATION.

COPYRIGHT FRANK L. BENNARDO P.E.
 15-2336
 SCALE: -
 PAGE DESCRIPTION:
 1 OF 10

04/17/2015 - 9:59am intem1 V:\Projects\15-2336 0.050 Aluminum Storm Panel - FSA - Update FL12856.1 for 2014 Florida Bid-Project\WPV15-2336_11-TCM-0003_04a 0.050 Alum Storm Panel (FSA).dwg

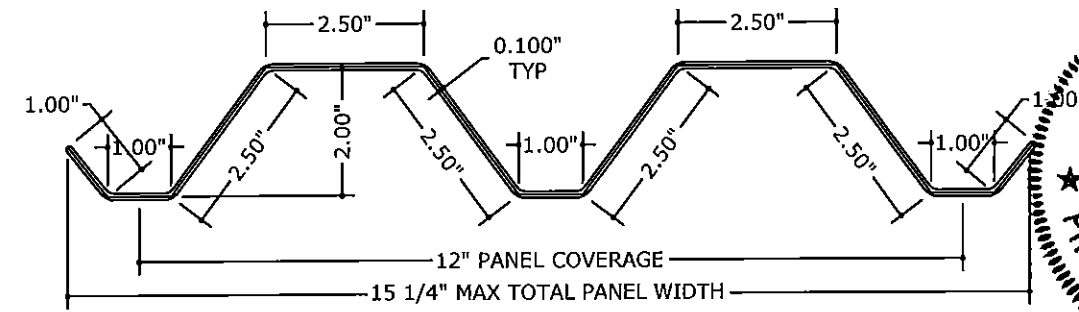


1 ALUMINUM STORM PANEL

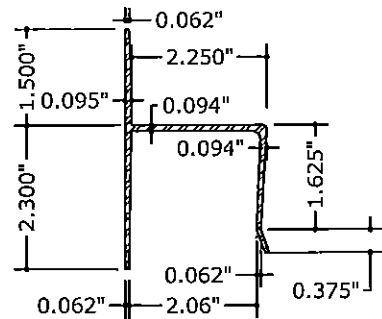


1a ALUMINUM HALF STORM PANEL

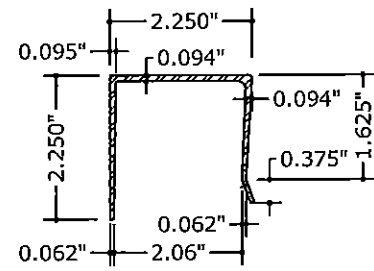
NOTE: HALF STORM PANEL SHALL ONLY BE USED AS AN END PANEL TO CLOSE THE REMAINING OPENING THAT MAY BE LESS THAN FULL PANEL WIDTH



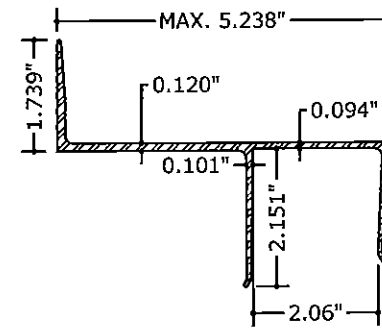
1b POLYCARBONATE STORM PANEL



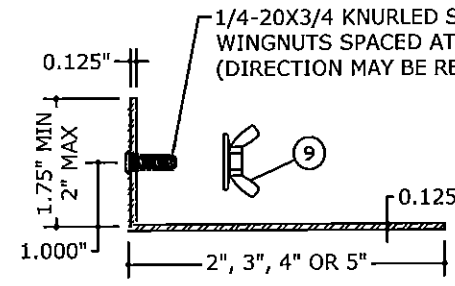
2 H HEADER



3 U HEADER

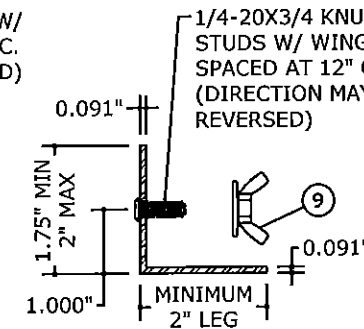


3a BUILD-OUT U HEADER



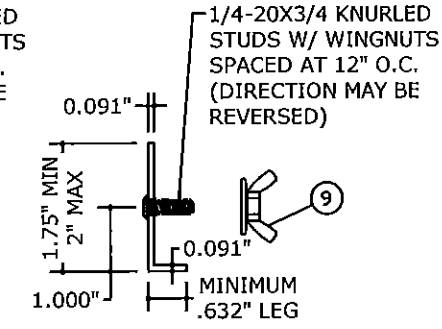
4 STUD ANGLE

SEE COMPONENT NOTES



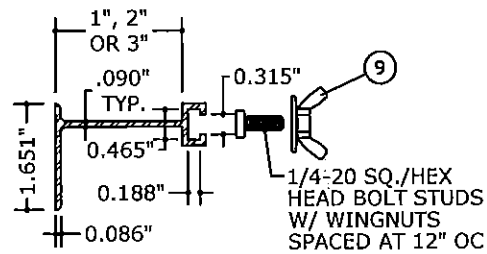
4a STUD ANGLE

SEE COMPONENT NOTES

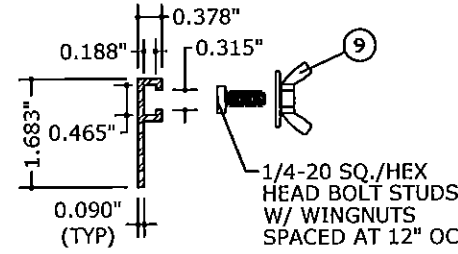


4b STUD ANGLE

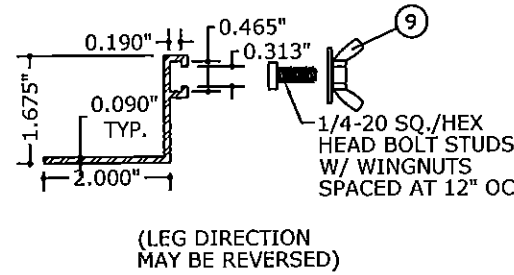
SEE COMPONENT NOTES



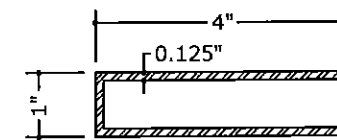
7 BUILD-OUT F TRACK



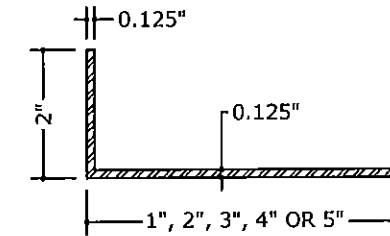
8 F TRACK



8a F ANGLE TRACK

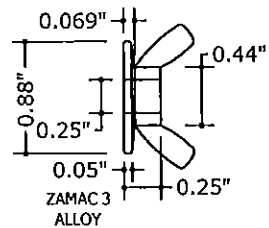


6 TUBE



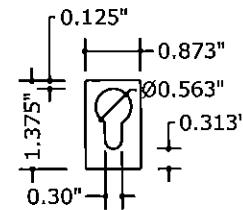
5 ANGLE

COMPONENT NOTES
 ANCHOR HEADS MUST NOT INTERFERE WITH INSTALLATION OF THE PANEL. THE FIRST AND LAST ANCHOR IN ALL TRACKS SHALL BE INSTALLED WITHIN THE FIRST 3\"/>



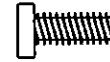
9 WASHER WINGNUT

NON-RECESSED FLAT SURFACE TYPE ONLY

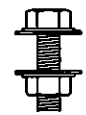


10 KEYHOLE WASHER

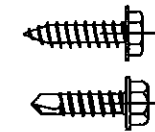
20 GA. GALV. STEEL (t=0.038\"/>



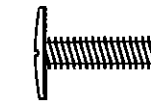
11 1/4-20 SQ./HEX HEAD BOLT



12 1/4-20 316 SS MACHINE BOLT W/NUT



13 #14x3/4 316 SS SDS/SMS SCREW



14 1/4-20 SIDEWALK BOLT



15 1/4-20 TRUSS HEAD BOLT

REQUIRES USE OF KEYHOLE WASHER IN DIRECT MOUNT APPLICATIONS

FRANK L. BENNARDO, P.E.
 No. 46549
 PROFESSIONAL ENGINEER
 ENGINEERING EXPERTS
 160 SW 12th Avenue, Suite 100
 Deerfield Beach, FL 33442
 PH: (954) 354-0660 FAX: (954) 354-9443
 WWW.ENGEXP.COM
 CERT OF AUTH #9985
 A FRANK L. BENNARDO, P.E., INC. INDIANAPOLIS, IN

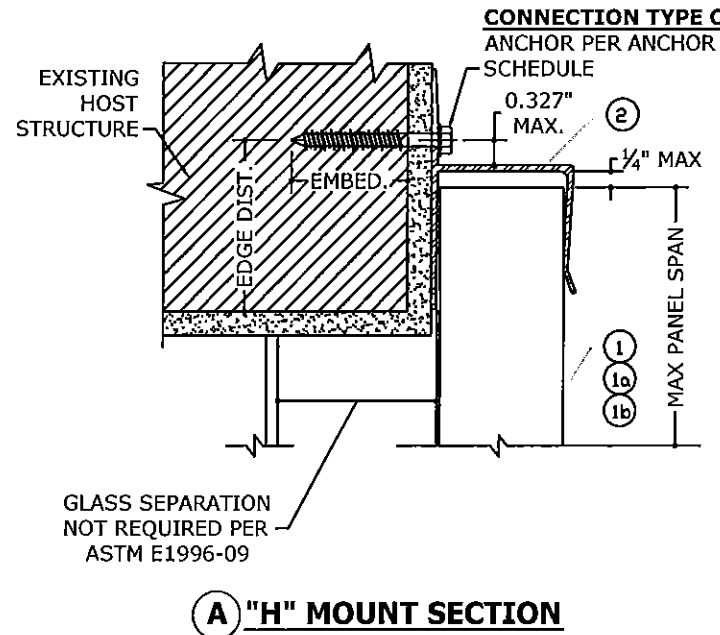
Town & Country INDUSTRIES
 Wholesale Aluminum and Building Products
 A Division of ABC Supply Co., Inc.
 400 WEST MCNAB ROAD
 FT. LAUDERDALE, FL 33309
 FL12856.1

REMARKS	DRWN	CHKD	DATE
INIT. ISSUE	KL	FLB	06/03/11
2010 FBC	CSL	KL	12/16/11
CLIENT REVISIONS	KL	FLB	10/25/13
2014 FBC (11-TCM-0003)	RWN	CSL	03/13/15

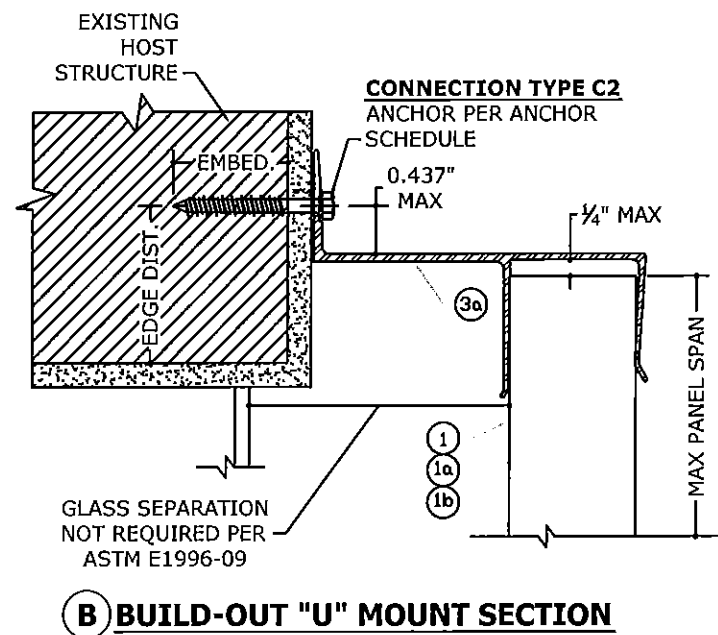
THIS DOCUMENT IS THE PROPERTY OF FRANK L. BENNARDO, P.E. AND SHALL NOT BE REPRODUCED IN WHOLE OR PART WITHOUT WRITTEN CONSENT OF FRANK L. BENNARDO, P.E. - ALTERNATIONS, ADDITIONS, DELETIONS, OR OTHER MODIFICATIONS TO THIS DOCUMENT ARE NOT PERMITTED AND INVALIDATE OUR CERTIFICATION.

COPYRIGHT FRANK L. BENNARDO P.E.
 15-2336
 SCALE: -
 PAGE DESCRIPTION:
 OF 10
 2

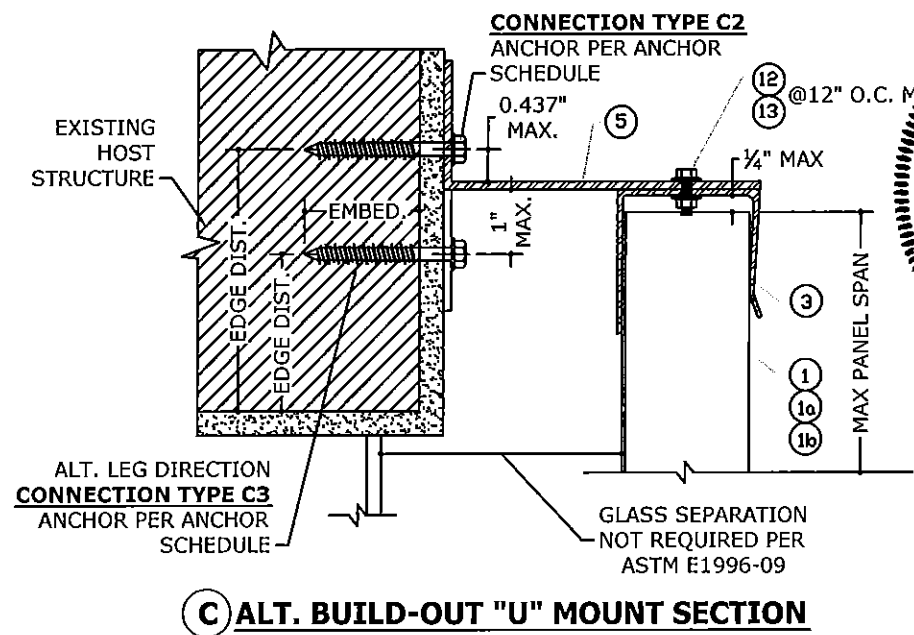
V:\Projects\15-2336 0.050 Aluminum Storm Panel - FSA - Update FL12856.1 for 2014 Florida Bid-Project\WP15-2336b_11-TCM-0003_04a 0.050 Alum Storm Panel (FSA).dwg
 04/17/2015 - 9:59am intern1



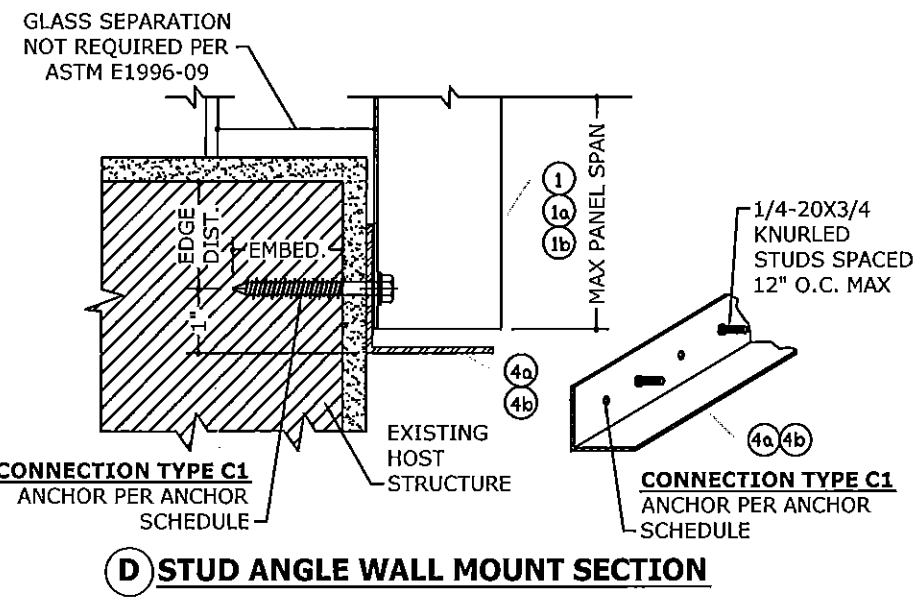
A "H" MOUNT SECTION



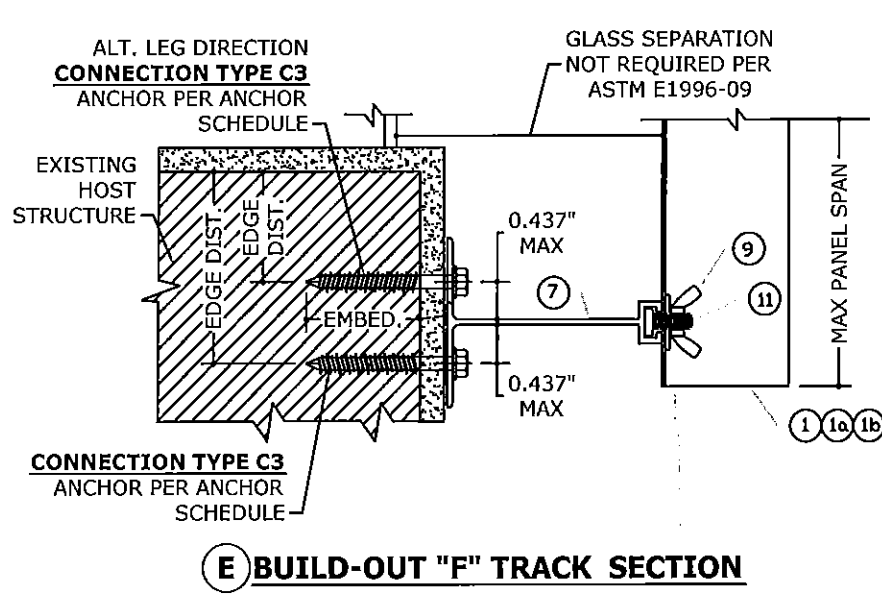
B BUILD-OUT "U" MOUNT SECTION



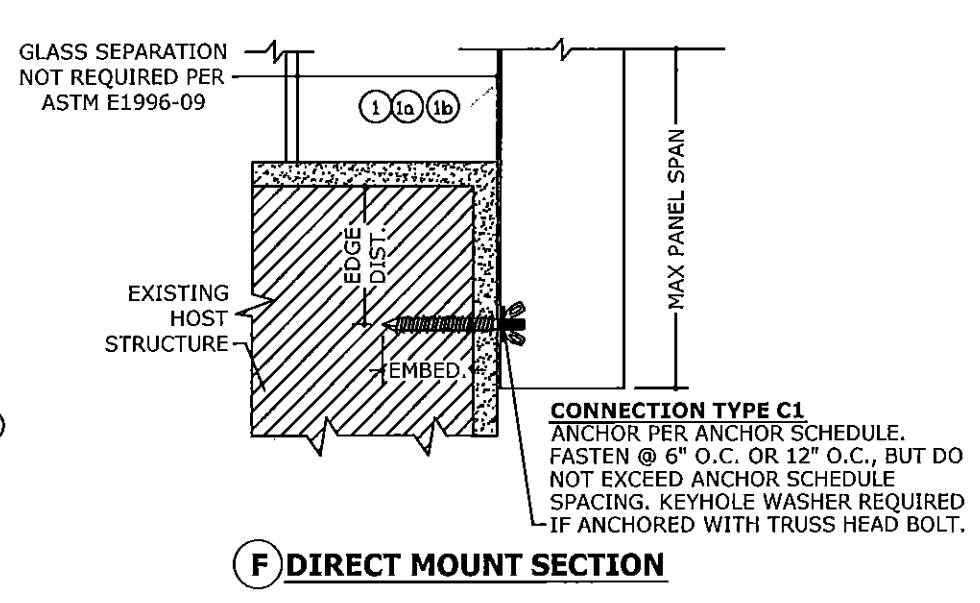
C ALT. BUILD-OUT "U" MOUNT SECTION



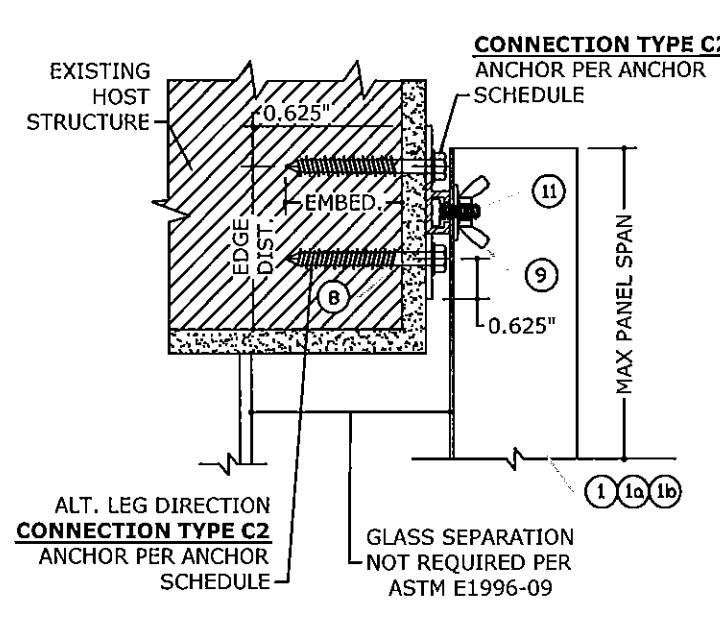
D STUD ANGLE WALL MOUNT SECTION



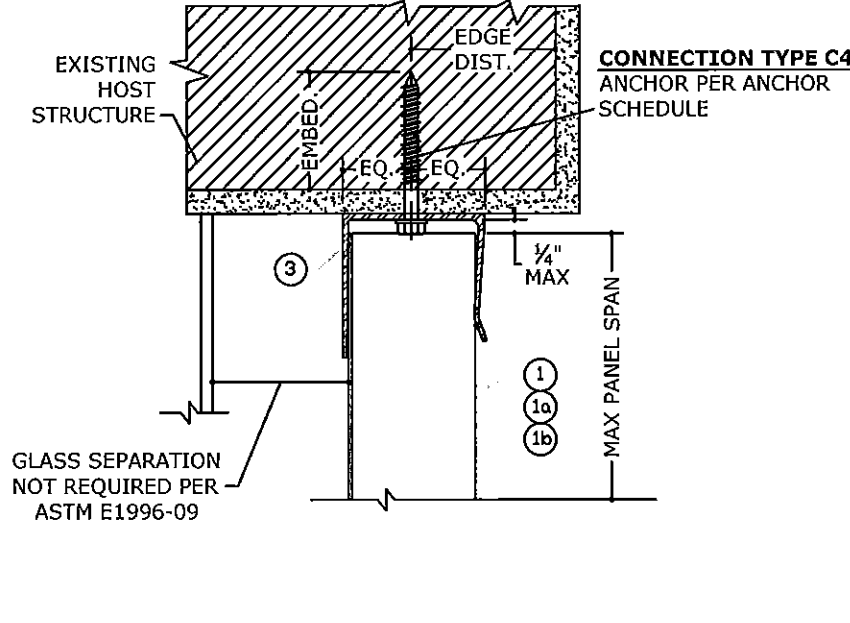
E BUILD-OUT "F" TRACK SECTION



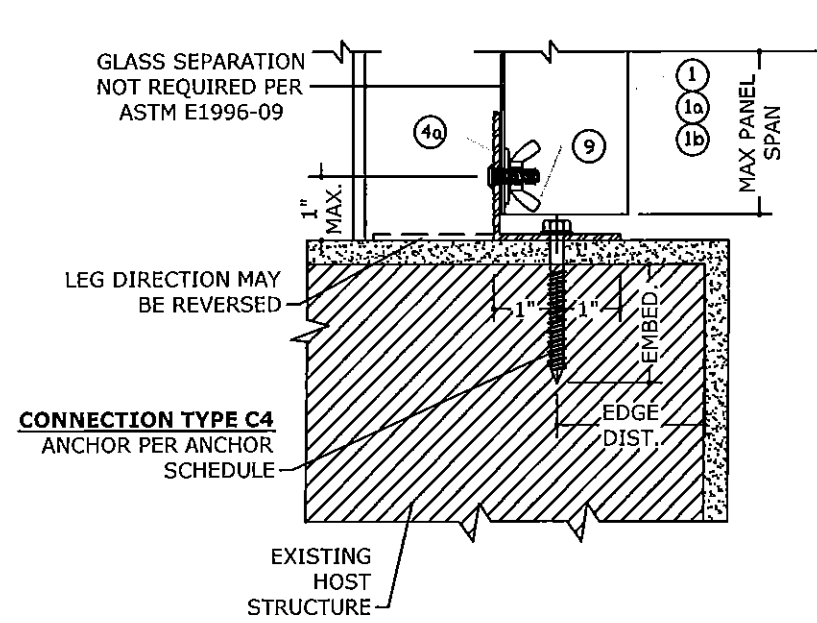
F DIRECT MOUNT SECTION



G "F" TRACK MOUNT SECTION



H TRAP "U" HEADER SECTION



I TRAP STUD ANGLE SECTION

FRANK L. BENNARDO, P.E.
 No. 46540
 PROFESSIONAL ENGINEERING
 EXPRESSION
 160 SW 12th Avenue, #186
 Deerfield Beach, FL 33442
 Ph: (954) 354-0660 Fax: (954) 354-0443
 WWW.ENGP.COM/FL
 CERT. OF AUTH. #8885
 A FRANK L. BENNARDO, P.E., INC. INNOVATION

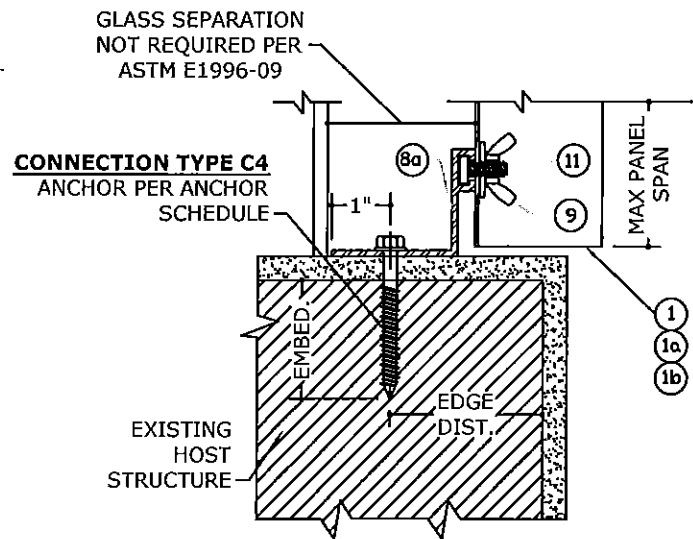
Town & Country
 INDUSTRIES
 Wholesale Aluminum and Building Products
 A Division of ABC Supply Co., Inc.
 400 WEST MCNARD ROAD
 FT. LAUDERDALE, FL 33309
 FL12856.1

REVISIONS	DATE	BY	CHKD
INIT ISSUE	06/03/11	KL	FLB
2010 FBC	12/16/11	CSL	KL
CLIENT REVISIONS	10/25/13	KL	FLB
2014 FBC (11-TCM-0003)	03/13/15	RWN	CSL

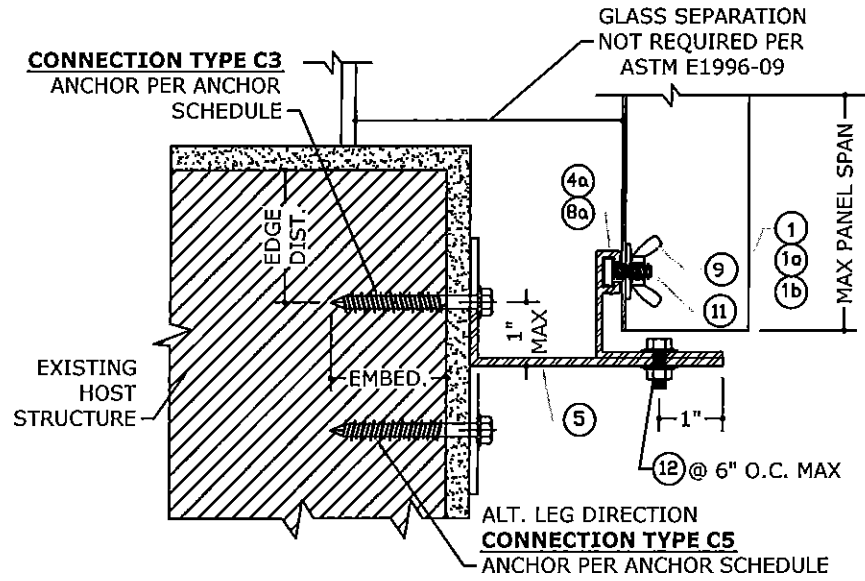
REMARKS: THIS DOCUMENT IS THE PROPERTY OF FRANK L. BENNARDO, P.E. AND SHALL NOT BE REPRODUCED IN WHOLE OR PART WITHOUT WRITTEN CONSENT OF FRANK L. BENNARDO, P.E. ANY UNAUTHORIZED REPRODUCTION OR TRANSMISSION OF THIS DOCUMENT ARE NOT PERMITTED AND WILL BE PROSECUTED TO THE FULL EXTENT OF THE LAW.

COPYRIGHT FRANK L. BENNARDO P.E.
 15-2336
 SCALE: -
 PAGE DESCRIPTION:
 OF 10

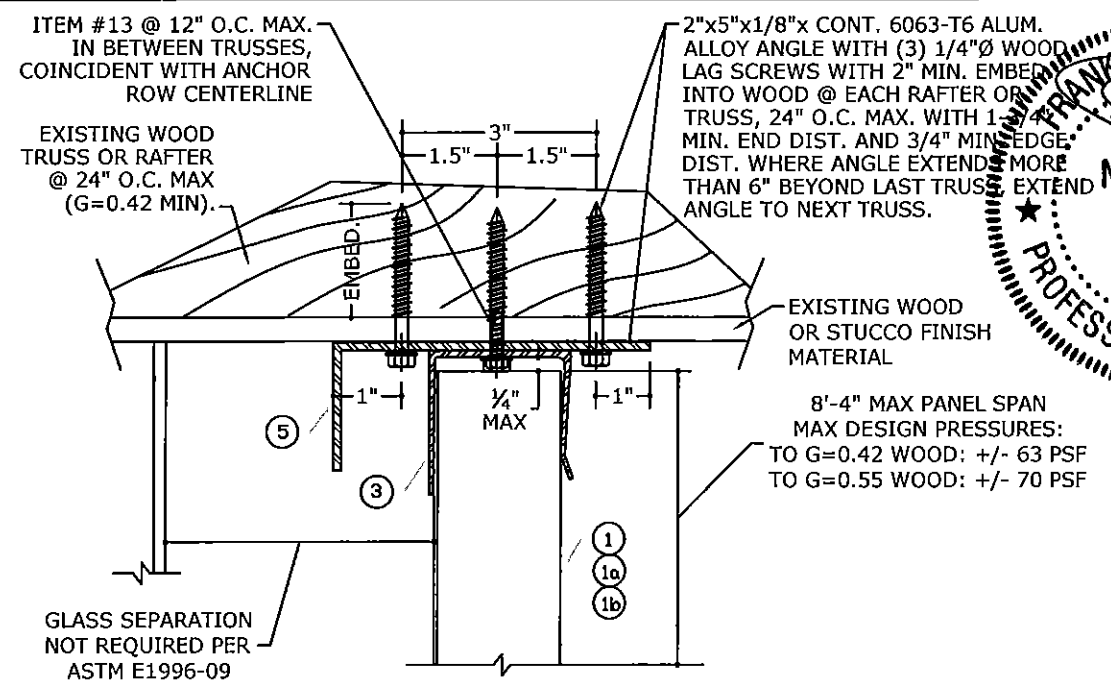
V:\Projects\15-2336 0.050 Aluminum Storm Panel - FSA - Update FL12856.1 for 2014 Florida Bldg-Project\WP15-2336b_11-TCM-0003_04a 0.050 Alum Storm Panel (FSA).dwg
 04/17/2015 - 9:59am intern1



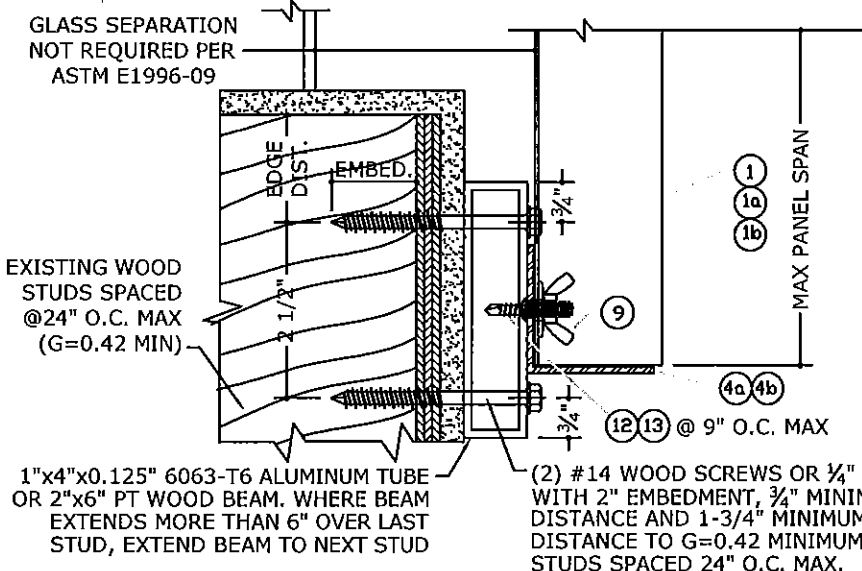
J "F" ANGLE TRACK MOUNT SECTION



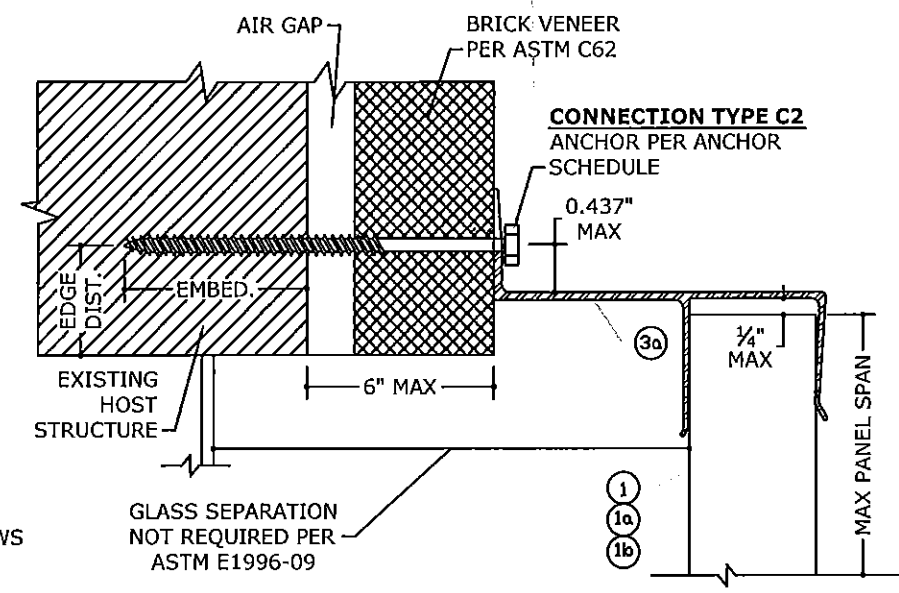
K REVERSE "F" ANGLE TRACK MOUNT SECTION



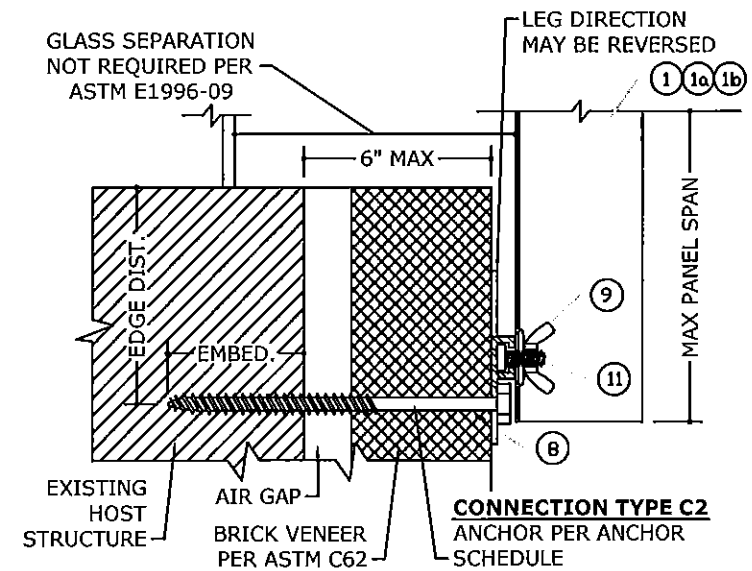
L CEILING MOUNT/BUILD-OUT SECTION



M STUD ANGLE BUILD-OUT MOUNT SECTION INTO STUD WALL



N "U" HEADER BUILD-OUT THROUGH VENEER OVER STRUCTURAL BASE SECTION



O DIRECT MOUNT THROUGH VENEER OVER STRUCTURAL BASE SECTION

FRANK L. BENNARDO, P.E.
 PROFESSIONAL ENGINEER
 No. 46549
 ENGINEERING EXPRESS
 160 SW 12th Avenue, #106
 Deerfield Beach, FL 33442
 Ph: (954) 354-0660 Fax: (954) 354-0443
 WWW.ENGP.COM
 CERT. OF AUTH. #9895
 A FRANK L. BENNARDO, P.E., INC. INNOVATIVE SOLUTIONS

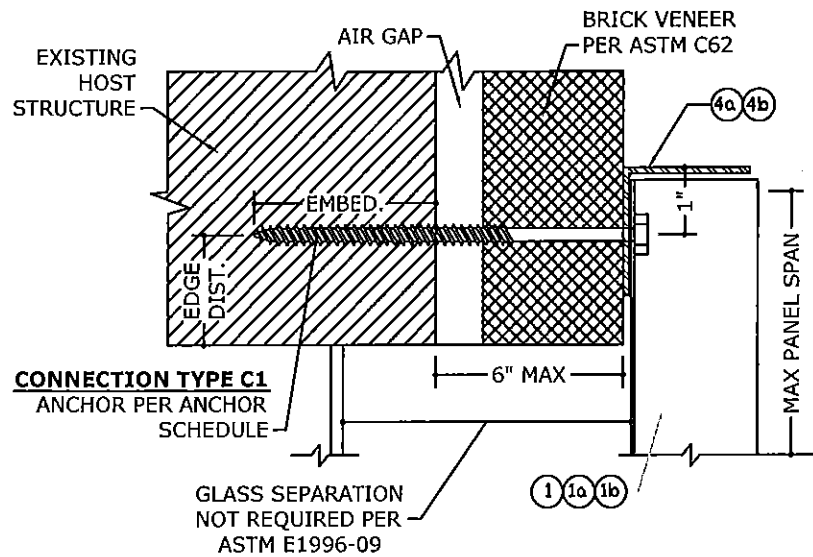
Town & Country INDUSTRIES
 Wholesale Aluminum and Building Products
 A Division of ABC Supply Co., Inc.
 400 WEST MCNAB ROAD
 FT. LAUDERDALE, FL 33309
 FL12856.1

REMARKS	DRWN	CHKD	DATE
INIT ISSUE	KL	FLB	06/03/11
2010 FBC	CSL	KL	12/16/11
CLIENT REVISIONS	KL	FLB	10/25/13
2014 FBC (11-TCM-0003)	RWN	CSL	03/13/15

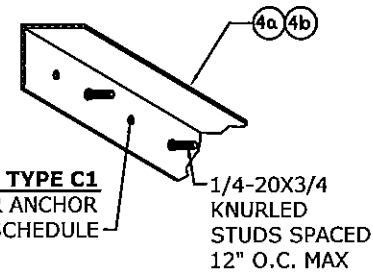
THIS DOCUMENT IS THE PROPERTY OF FRANK L. BENNARDO, P.E. AND SHALL NOT BE REPRODUCED IN WHOLE OR PART WITHOUT WRITTEN CONSENT OF FRANK L. BENNARDO, P.E. ANY UNAUTHORIZED REPRODUCTION OR TRANSMISSION OF THIS DOCUMENT ARE NOT PERMITTED AND WILL BE PROSECUTED TO THE FULL EXTENT OF THE LAW.

COPYRIGHT FRANK L. BENNARDO P.E.

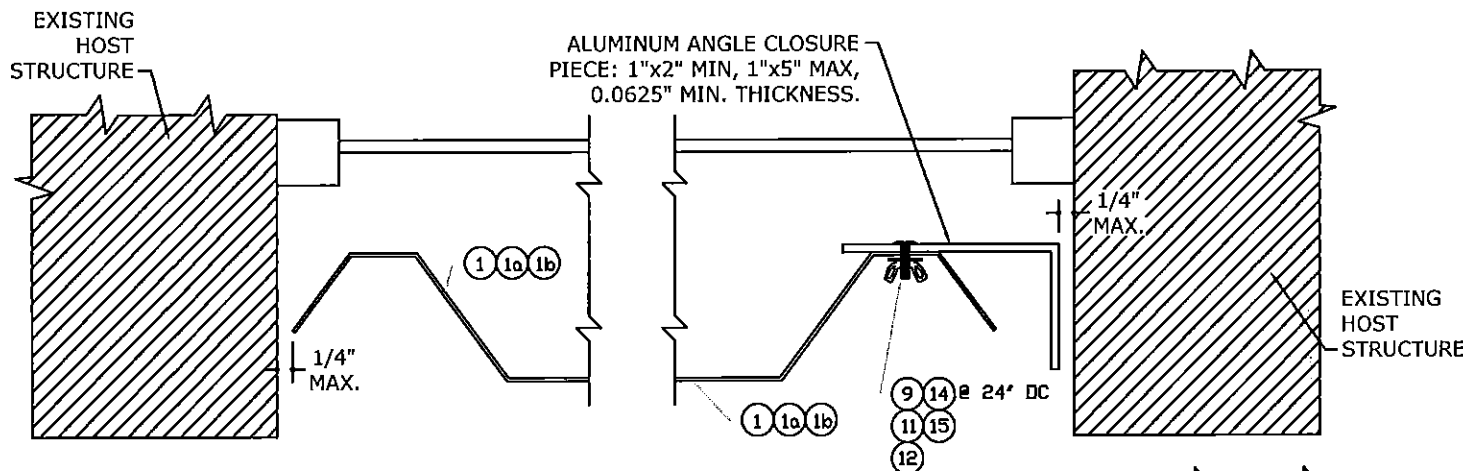
15-2336
 SCALE:
 PAGE DESCRIPTION:
 OF 10
 4



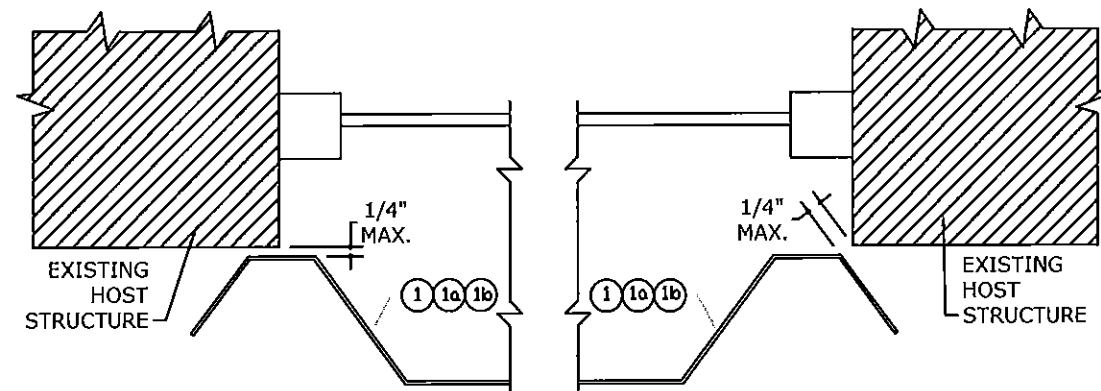
P STUD ANGLE THROUGH VENEER OVER STRUCTURAL BASE SECTION



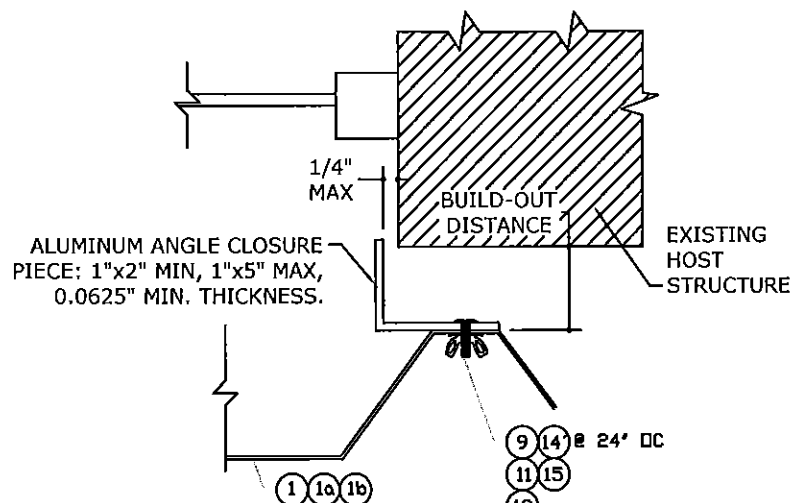
Q BUILD-OUT "F" TRACK THROUGH VENEER OVER STRUCTURAL BASE SECTION



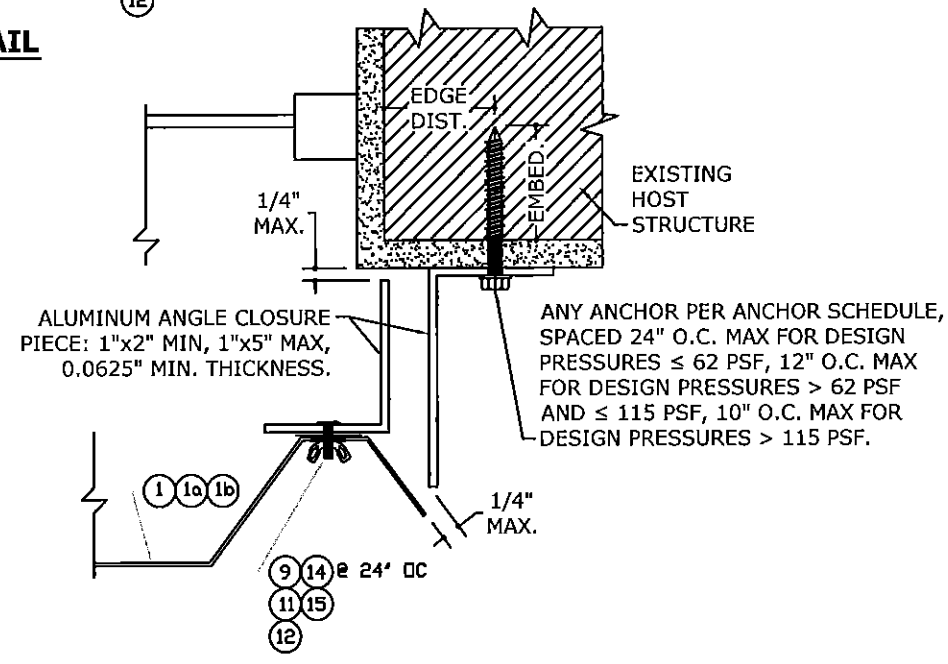
R TRAP MOUNT CLOSURE DETAIL



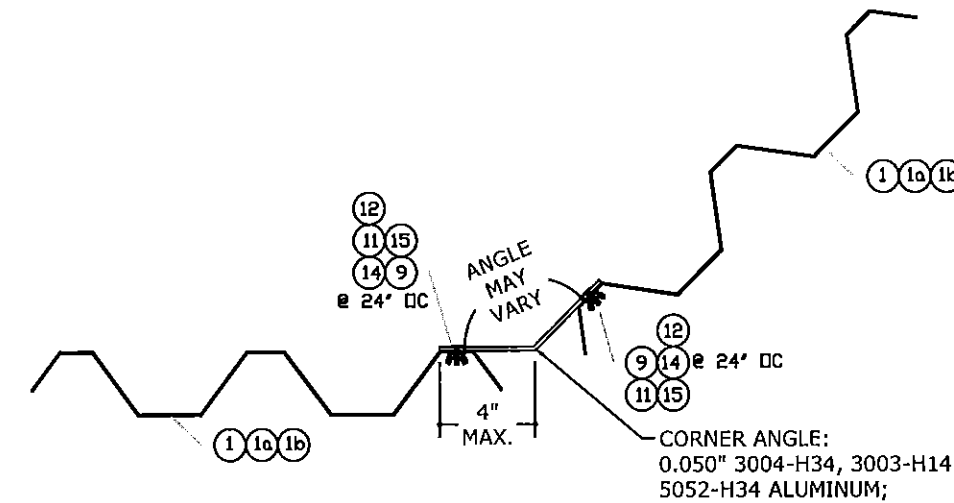
S WALL MOUNT CLOSURE DETAIL



T BUILD-OUT MOUNT CLOSURE DETAIL



U ALTERNATE CLOSURE DETAIL



V CORNER ANGLE DETAIL

FRANK L. BENNARDO, P.E.
#ED046549

FRANK L. BENNARDO
PROFESSIONAL ENGINEER
No. 46549

ENGINEERING EXPRESS

160 SW 12th Avenue, Suite 33442
Deerfield Beach, FL 33442
Ph: (954) 354-0660 Fax: (954) 354-0443
WWW.ENGEXPRESS.COM

CERT OF AUTH #9885
A FRANK L. BENNARDO, P.E., INC. INNOVATION

Town & Country
INDUSTRIES
Wholesale Aluminum and Building Products
A Division of ABC Supply Co., Inc.

400 WEST MCNAB ROAD
FT. LAUDERDALE, FL 33309

FL12856.1

DRWN	CHKD	DATE
KL	FLB	06/03/11
CSL	KL	12/16/11
KL	FLB	10/25/13
RWN	CSL	03/13/15

REVISIONS

2010 PBC

2014 PBC (11-TCM-0003)

THIS DOCUMENT IS THE PROPERTY OF FRANK L. BENNARDO, P.E. AND SHALL NOT BE REPRODUCED OR TRANSMITTED IN ANY FORM OR BY ANY MEANS, ELECTRONIC OR MECHANICAL, INCLUDING PHOTOCOPYING, RECORDING, OR BY ANY INFORMATION STORAGE AND RETRIEVAL SYSTEM, WITHOUT THE WRITTEN PERMISSION OF FRANK L. BENNARDO, P.E.

COPYRIGHT FRANK L. BENNARDO P.E.

15-2336

SCALE: -

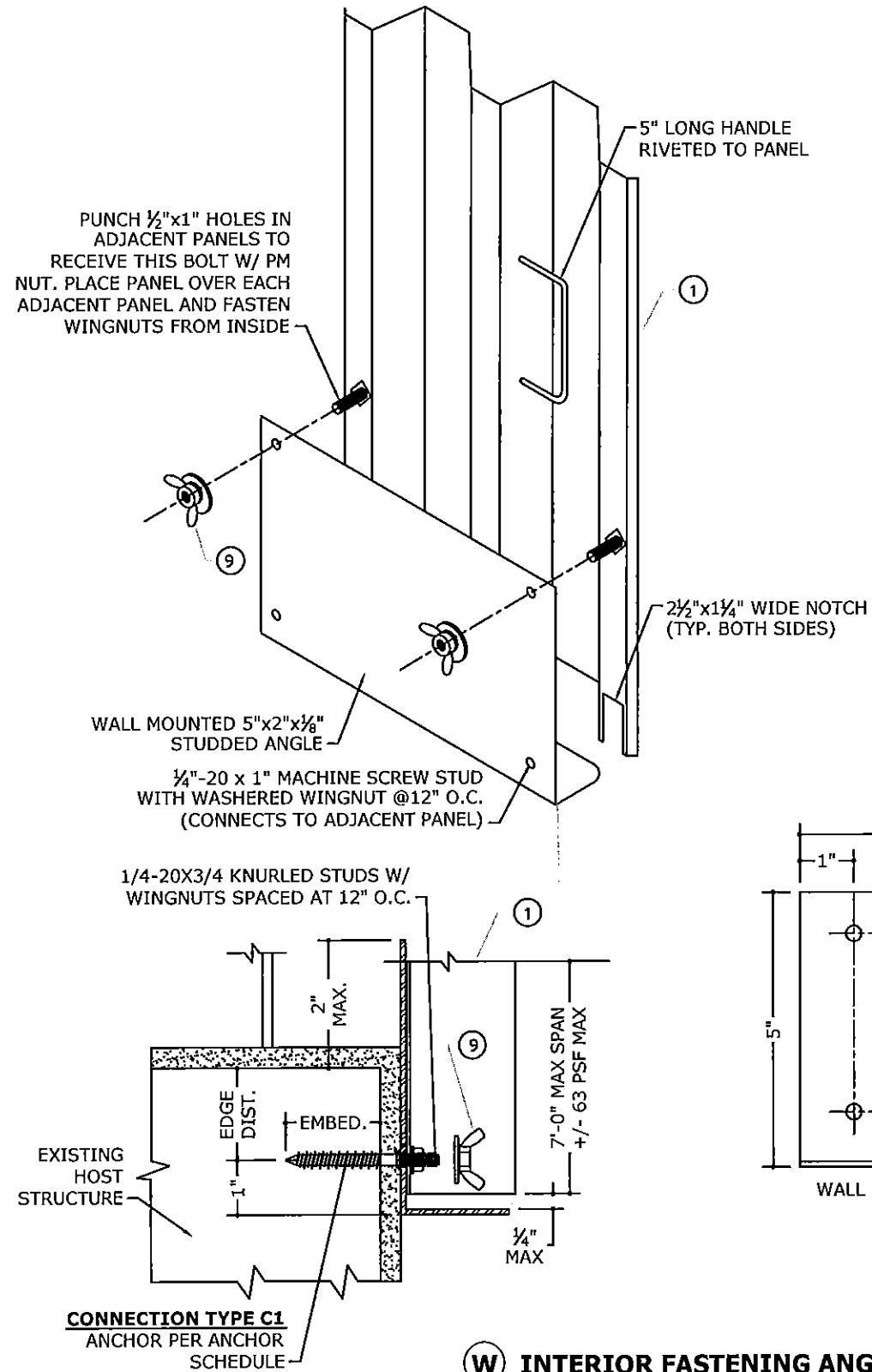
PAGE DESCRIPTION:

CORNER ANGLE:
0.050" 3004-H34, 3003-H14, OR
5052-H34 ALUMINUM;
OR 20 GA GALV A36 STEEL

OF 10

5

V:\Projects\15-2336 0.050 Aluminum Storm Panel - FSA - Update FL12856.1 for 2014 Florida Bid-Project\VP15-2336b_11-TCM-0003_04a.0.050 Alum Storm Panel (FSA).dwg
 04/17/2015 - 9:59am intem1



FRANK L. BENNARDO, P.E.
 #PE0046549

FRANK L. BENNARDO, P.E.

No. 46549

ENGINEERING EXPRESS

160 SW 12th Avenue, #108
 DEERFIELD BEACH, FL 33442
 PH: (954) 354-0660 FAX: (954) 354-0643
 WWW.ENGINEERINGEXPRESS.COM

CERT. OF AUTH. #9885
 A FRANK L. BENNARDO, P.E., INC. INNOVATION

Town & Country
 INDUSTRIES
 Wholesale Aluminum and Building Products
 A Division of ABC Supply Co., Inc.

400 WEST MCNAB ROAD
 FT. LAUDERDALE, FL 33309
 FL12856.1

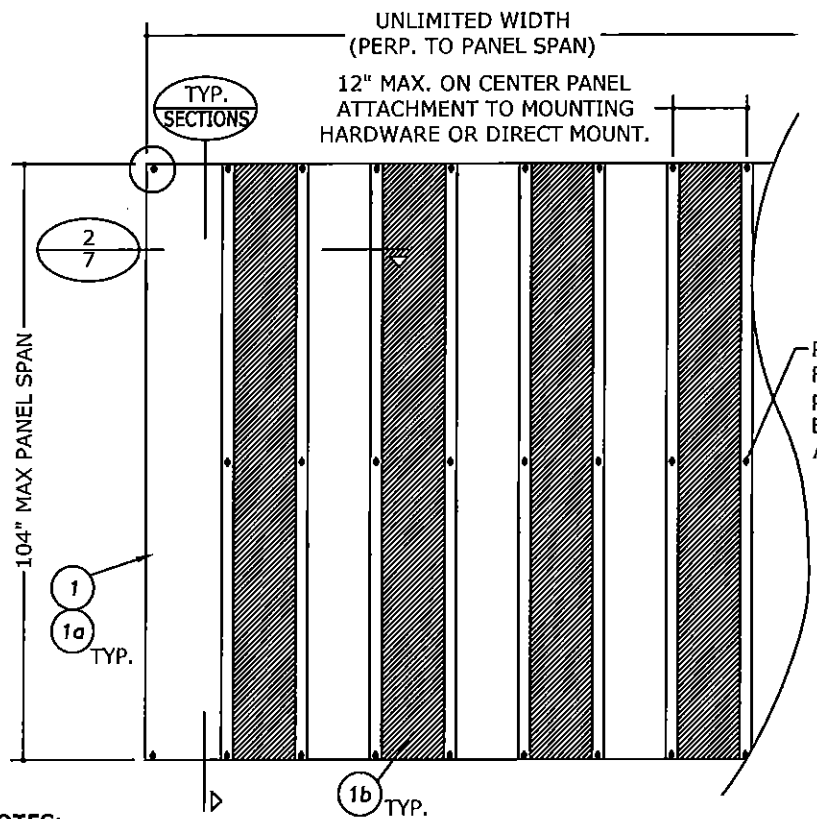
REMARKS	DRWN	CHKD	DATE
INIT ISSUE	KL	FLB	06/03/11
2010 FBC	CSL	KL	12/16/11
CLIENT REVISIONS	KL	FLB	10/25/13
2014 FBC (11-TCM-0003)	RWN	CSL	03/13/15

THIS DOCUMENT IS THE PROPERTY OF FRANK L. BENNARDO, P.E. AND SHALL NOT BE REPRODUCED IN WHOLE OR PART WITHOUT THE WRITTEN CONSENT OF FRANK L. BENNARDO, P.E. ANY UNAUTHORIZED REPRODUCTION OR USE OF THIS DOCUMENT ARE NOT PERMITTED AND WILL INVADE OUR CERTIFICATION.

COPYRIGHT FRANK L. BENNARDO P.E.

15-2336

SCALE: -
 PAGE DESCRIPTION: -



POLYCARBONATE PANELS FASTENED TO ADJACENT STORM PANELS WITH 1/4\"-20 SIDEWALK BOLT AND WASHERED WINGUT AT MIDSPAN, TYPICAL.

**ALLOWABLE
DESIGN PRESSURES**
WITH ALTERNATING ALUMINUM AND
POLYCARBONATE PANELS

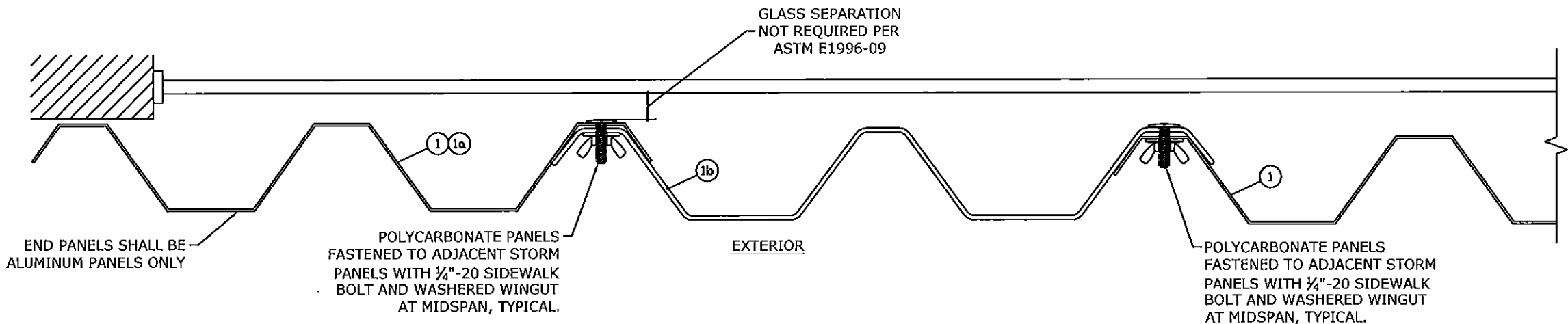
**+55 PSF
-58 PSF**

NOTE: ANY INSTALLATION WITH ALTERNATING ALUMINUM AND POLYCARBONATE PANELS SHALL NOT EXCEED THESE DESIGN PRESSURES.

NOTES:

1. TOP MAY BE SLOPED OR RADIUSUED TO MATCH GEOMETRY OF OPENING. MOUNTING HARDWARE MUST BE ROLL-FORMED TO THE RADIUS; NO NOTCHING OF MOUNTING HARDWARE TO ACHIEVE SHAPES IS ALLOWED.
2. STORM PANELS MAY BE MOUNTED VERTICALLY OR HORIZONTALLY.
3. ALUMINUM AND POLYCARBONATE PANELS SHALL ALTERNATE.
4. END PANELS SHALL BE ALUMINUM PANELS ONLY.

1
7 N.T.S. **TYPICAL ELEVATION WITH ALTERNATING ALUMINUM AND POLYCARBONATE PANELS**
EXTERIOR ELEV



2
7 N.T.S. **TYPICAL SECTION WITH ALTERNATING ALUMINUM AND POLYCARBONATE PANELS**
HORIZ SECTION

FRANK L. BENNARDO, P.E.
No. 46549

FRANK L. BENNARDO, P.E.
REGISTERED PROFESSIONAL ENGINEER
LICENSE NO. 46549

ENGINEERING EXPERTS

160 SW 12th Avenue, Suite 3342
Deerfield Beach, FL 33442
Ph: (954) 354-0660 Fax: (954) 354-0443
WWW.ENGP.E.COM

CERT. OF AUTH. #9885
A FRANK L. BENNARDO, P.E., INC. INNOVATION

Town & Country
INDUSTRIES
Wholesale Aluminum and Building Products
A Division of ABC Supply Co., Inc.

400 WEST MCNAB ROAD
FT. LAUDERDALE, FL 33309

FL12856.1

REVISIONS	DATE	CHKD	DATE
INIT ISSUE	06/03/11	KL	FLB
2010 FBC	12/16/11	CSL	KL
CLIENT REVISIONS	10/25/13	FLB	FLB
2014 FBC (11-TCM-0003)	03/13/15	RWN	CSL

THIS DOCUMENT IS THE PROPERTY OF FRANK L. BENNARDO, P.E. AND SHALL NOT BE REPRODUCED IN WHOLE OR IN PART WITHOUT THE WRITTEN CONSENT OF FRANK L. BENNARDO, P.E. ANY UNAUTHORIZED REPRODUCTION OR TRANSMISSION OF THIS DOCUMENT IS STRICTLY PROHIBITED AND WILL INVAIDATE OUR CERTIFICATION.

COPYRIGHT FRANK L. BENNARDO P.E.

15-2336

SCALE: _____

PAGE DESCRIPTION: _____

7 of 10

ANCHOR SCHEDULES:

(SEE SHEET 9 FOR ANCHOR NOTES)

HOST STRUCT.	ANCHOR	LOAD (psf)	EDGE DISTANCES AS NOTED															
			Spans Up To 5'-0"					Spans Up To 9'-0"					Spans Up To 12'-0"					
			CONN TYPE					CONN TYPE					CONN TYPE					
			C1	C2	C3	C4	C5	C1	C2	C3	C4	C5	C1	C2	C3	C4	C5	
CONCRETE	1/4" ITW S.S. TAPCON WITH 1-3/4" EMBED AND 1" MIN. EDGE DISTANCE (3192 psi MIN CONCRETE)	33	16.0"	16.0"	16.0"	13.4"	16.0"	16.0"	16.0"	16.0"	7.5"	16.0"	16.0"	16.0"	16.0"	5.6"	16.0"	
		48	16.0"	16.0"	16.0"	9.2"	16.0"	16.0"	16.0"	16.0"	5.1"	16.0"	16.0"	13.7"	16.0"	3.7"	11.3"	
		62	16.0"	16.0"	16.0"	7.1"	16.0"	16.0"	14.4"	16.0"	3.9"	12.0"	15.0"	9.4"	15.0"		7.2"	
		76	16.0"	16.0"	16.0"	5.8"	16.0"	16.0"	10.6"	16.0"	3.1"	8.3"	12.3"	7.2"	12.3"		5.3"	
		90	16.0"	16.0"	16.0"	4.9"	16.0"	13.8"	8.4"	13.8"		6.3"	10.4"	5.8"	9.7"		4.2"	
		105	16.0"	15.9"	16.0"	4.1"	13.6"	11.8"	6.8"	11.8"		5.0"	8.9"	4.8"	7.8"		3.4"	
	120	16.0"	12.8"	16.0"	3.6"	10.4"	10.4"	5.8"	9.7"		4.2"	7.8"	4.1"	6.5"				
	33	16.0"	16.0"	16.0"	16.0"	16.0"	16.0"	16.0"	16.0"	12.2"	16.0"	16.0"	16.0"	16.0"	9.1"	16.0"		
	48	16.0"	16.0"	16.0"	15.1"	16.0"	16.0"	16.0"	16.0"	8.2"	16.0"	16.0"	13.5"	16.0"	6.0"	11.1"		
	62	16.0"	16.0"	16.0"	11.7"	16.0"	16.0"	14.2"	16.0"	6.2"	11.9"	14.8"	9.3"	14.8"	4.6"	7.1"		
	76	16.0"	16.0"	16.0"	9.5"	16.0"	16.0"	10.4"	16.0"	5.0"	8.2"	12.1"	7.1"	12.1"		5.2"		
	90	16.0"	16.0"	16.0"	7.9"	16.0"	13.6"	8.3"	13.6"	4.2"	6.2"	10.2"	5.7"	9.6"		4.1"		
105	16.0"	15.7"	16.0"	6.7"	13.5"	11.7"	6.7"	11.7"		5.0"	8.8"	4.7"	7.7"					
120	16.0"	12.7"	16.0"	5.8"	10.3"	10.2"	5.7"	9.6"		4.1"	7.7"	4.0"	6.4"					
CONCRETE	1/4" ITW SAMMYS SSC W/ 2-1/4" MIN EMBED AND 1-1/4" MIN. EDGE DISTANCE (3295 psi MIN CONCRETE)	33	16.0"	16.0"	16.0"	16.0"	16.0"	16.0"	16.0"	16.0"	16.0"	16.0"	16.0"	16.0"	13.9"	16.0"		
		48	16.0"	16.0"	16.0"	16.0"	16.0"	16.0"	16.0"	16.0"	12.6"	16.0"	16.0"	16.0"	9.2"	16.0"		
		62	16.0"	16.0"	16.0"	16.0"	16.0"	16.0"	16.0"	16.0"	9.6"	16.0"	16.0"	15.0"	16.0"	7.0"	11.5"	
		76	16.0"	16.0"	16.0"	14.5"	16.0"	16.0"	16.0"	16.0"	7.7"	13.2"	16.0"	11.4"	16.0"	5.7"	8.4"	
		90	16.0"	16.0"	16.0"	12.0"	16.0"	16.0"	13.3"	16.0"	6.4"	10.1"	16.0"	9.2"	15.4"	4.8"	6.7"	
		105	16.0"	16.0"	16.0"	10.2"	16.0"	16.0"	10.9"	16.0"	5.5"	8.0"	14.2"	7.6"	12.4"	4.1"	5.4"	
120	16.0"	16.0"	16.0"	8.8"	16.0"	16.0"	9.2"	15.4"	4.8"	6.7"	12.4"	6.5"	10.4"	3.6"	4.6"			
CONCRETE	1/4-20 ALL POINTS SOLID-SET WITH 7/8" MIN EMBED AND 1-1/4" MIN. EDGE DISTANCE (3000 psi MIN CONCRETE)	33	16.0"	16.0"	16.0"	16.0"	16.0"	16.0"	16.0"	16.0"	9.6"	16.0"	16.0"	16.0"	7.1"	16.0"		
		48	16.0"	16.0"	16.0"	11.9"	16.0"	16.0"	15.8"	16.0"	6.5"	15.5"	13.7"	9.6"	13.7"	4.7"	8.0"	
		62	16.0"	16.0"	16.0"	9.2"	16.0"	14.1"	10.1"	14.1"	4.9"	8.5"	10.6"	6.6"	10.6"	3.6"	5.1"	
		76	16.0"	16.0"	16.0"	7.5"	16.0"	11.5"	7.4"	11.5"	3.9"	5.8"	8.6"	5.0"	8.6"		3.7"	
		90	16.0"	14.6"	16.0"	6.2"	13.8"	9.7"	5.9"	9.7"	3.3"	4.4"	7.3"	4.1"	6.8"			
		105	15.0"	11.2"	15.0"	5.2"	9.6"	8.3"	4.8"	8.3"		3.5"	6.2"	3.4"	5.5"			
120	13.1"	9.0"	13.1"	4.5"	7.4"	7.3"	4.1"	6.8"				5.5"		4.6"				
CONCRETE	1/4" POWERS TAPPER WITH 1-3/4" MIN EMBED AND 1-1/2" MIN. EDGE DISTANCE (3000 psi MIN CONCRETE)	33	16.0"	16.0"	16.0"	14.3"	16.0"	15.4"	15.4"	15.4"	8.0"	15.4"	11.5"	10.9"	11.5"	5.9"	11.5"	
		48	16.0"	16.0"	16.0"	9.9"	16.0"	10.6"	9.1"	10.6"	5.3"	9.0"	7.9"	5.6"	7.9"	3.8"	4.6"	
		62	14.7"	14.7"	14.7"	7.6"	14.7"	8.2"	5.9"	8.2"	4.0"	4.9"	6.1"	3.8"	6.1"			
		76	12.0"	11.9"	12.0"	6.2"	12.0"	6.7"	4.3"	6.7"	3.2"	3.4"	5.0"		5.0"			
		90	10.1"	8.5"	10.1"	5.1"	8.0"	5.6"	3.4"	5.6"				4.2"		3.9"		
		105	8.7"	6.5"	8.7"	4.3"	5.6"	4.8"		4.8"				3.6"		3.2"		
120	7.6"	5.2"	7.6"	3.7"	4.3"	4.2"		3.9"				3.2"						

HOST STRUCT.	ANCHOR	LOAD (psf)	EDGE DISTANCES AS NOTED															
			Spans Up To 5'-0"					Spans Up To 9'-0"					Spans Up To 12'-0"					
			CONN TYPE					CONN TYPE					CONN TYPE					
			C1	C2	C3	C4	C5	C1	C2	C3	C4	C5	C1	C2	C3	C4	C5	
CONCRETE	1/4" MILLENNIUM MILLFAST WITH 1-3/4" EMBED AND 2-1/2" EDGE DISTANCE (3275psi MIN CONCRETE)	33	16.0"	16.0"	16.0"	16.0"	16.0"	16.0"	16.0"	16.0"	16.0"	16.0"	16.0"	16.0"	13.3"	16.0"		
		48	16.0"	16.0"	16.0"	16.0"	16.0"	16.0"	16.0"	16.0"	12.0"	16.0"	16.0"	12.8"	16.0"	8.7"	10.5"	
		62	16.0"	16.0"	16.0"	16.0"	16.0"	16.0"	13.4"	16.0"	9.0"	11.2"	14.0"	8.8"	14.0"	6.6"	6.7"	
		76	16.0"	16.0"	16.0"	14.0"	16.0"	15.3"	9.9"	15.3"	7.2"	7.7"	11.4"	6.7"	11.4"	5.3"	4.9"	
		90	16.0"	16.0"	16.0"	11.5"	16.0"	12.9"	7.8"	12.9"	6.0"	5.9"	9.7"	5.4"	9.0"	4.4"		
		105	16.0"	14.8"	16.0"	9.7"	12.7"	11.0"	6.4"	11.0"	5.1"	4.7"	8.3"	4.5"	7.3"			
	120	16.0"	12.0"	16.0"	8.3"	9.8"	9.7"	5.4"	9.0"	4.4"		7.3"		6.1"				
	33	16.0"	16.0"	16.0"	16.0"	16.0"	16.0"	16.0"	16.0"	12.7"	16.0"	16.0"	16.0"	16.0"	9.4"	16.0"		
	48	16.0"	16.0"	16.0"	15.8"	16.0"	16.0"	16.0"	16.0"	8.5"	16.0"	14.4"	10.1"	14.4"	6.2"	8.4"		
	62	16.0"	16.0"	16.0"	12.2"	16.0"	14.9"	10.7"	14.9"	6.4"	8.9"	11.2"	7.0"	11.2"	4.7"	5.3"		
	76	16.0"	16.0"	16.0"	9.9"	16.0"	12.1"	7.9"	12.1"	5.1"	6.1"	9.1"	5.3"	9.1"				
	90	16.0"	15.4"	16.0"	8.1"	14.6"	10.3"	6.2"	10.3"	4.3"	4.7"	7.7"	4.3"	7.2"				
105	15.8"	11.8"	15.8"	6.9"	10.1"	8.8"	5.1"	8.8"				6.6"		5.8"				
120	13.8"	9.5"	13.8"	5.9"	7.8"	7.7"	4.3"	7.2"				5.8"		4.8"				
CONCRETE	#12 SMS W/ 2" EYEWALL ARMOR INSERT W/ 2" EMBED AND 2" EDGE DISTANCE (2000psi MIN CONC)	33	16.0"	16.0"	16.0"	16.0"	16.0"	16.0"	16.0"	16.0"	16.0"	16.0"	16.0"	16.0"	9.6"	16.0"		
		48	16.0"	16.0"	16.0"	16.0"	16.0"	16.0"	16.0"	16.0"	8.7"	16.0"	16.0"	13.1"	16.0"	6.4"	10.8"	
		62	16.0"	16.0"	16.0"	12.4"	16.0"	16.0"	13.8"	16.0"	6.6"	11.5"	14.4"	9.0"	14.4"	4.8"	6.9"	
		76	16.0"	16.0"	16.0"	10.0"	16.0"	15.6"	10.1"	15.6"	5.3"	7.9"	11.7"	6.8"	11.7"	3.9"	5.1"	
		90	16.0"	16.0"	16.0"	8.3"	16.0"	13.2"	8.0"	13.2"	4.4"	6.0"	9.9"	5.5"	9.3"	3.3"	4.0"	
		105	16.0"	15.2"	16.0"	7.0"	13.1"	11.3"	6.5"	11.3"	3.8"	4.8"	8.5"	4.6"	7.5"		3.3"	
120	16.0"	12.3"	16.0"	6.1"	10.0"	9.9"	5.5"	9.3"	3.3"	4.0"	7.4"	3.9"	6.2"					
CONCRETE	#12 SMS W/ 2.75" EYEWALL ARMOR INSERT W/ 2.5" EMBED AND 2" EDGE DISTANCE (2000psi MIN CONC)	33	16.0"	16.0"	16.0"	16.0"	16.0"	16.0"	16.0"	16.0"	16.0"	16.0"	16.0"	16.0"	13.6"	16.0"		
		48	16.0"	16.0"	16.0"	16.0"	16.0"	16.0"	16.0"	16.0"	12.4"	16.0"	16.0"	16.0"	9.0"	13.9"		
		62	16.0"	16.0"	16.0"	16.0"	16.0"	16.0"	16.0"	16.0"	9.3"	14.8"	16.0"	11.5"	16.0"	6.9"	8.9"	
		76	16.0"	16.0"	16.0"	14.3"	16.0"	16.0"	13.0"	16.0"	7.5"	10.2"	15.1"	8.8"	15.1"	5.5"	6.5"	
		90	16.0"	16.0"	16.0"	11.8"	16.0"	16.0"	10.3"	16.0"	6.3"	7.8"	12.7"	7.1"	11.9"	4.6"	5.1"	
		105	16.0"	16.0"	16.0"	10.0"	16.0"	14.5"	8.4"	14.5"	5.3"	6.2"	10.9"	5.9"	9.6"	3.9"	4.2"	
120	16.0"	15.8"	16.0"	8.6"	12.8"	12.7"	7.1"	11.9"	4.6"	5.1"	9.5"	5.0"	8.0"	3.4"	3.5"			

HOST STRUCT.	ANCHOR	LOAD (psf)	EDGE DISTANCES AS NOTED															
			Spans Up To 5'-0"					Spans Up To 9'-0"					Spans Up To 12'-0"					
			CONN TYPE					CONN TYPE					CONN TYPE					
			C1	C2	C3	C4	C5	C1	C2	C3	C4	C5	C1	C2	C3	C4	C5	
CONCRETE	1/4" ITW S.S. TAPCON WITH 1-3/4" EMBED AND 2-1/2" MIN. EDGE DISTANCE (3192 psi MIN CONCRETE)	33	16.0"	16.0"	16.0"	16.0"	16.0"	16.0"	16.0"	16.0"	16.0"	16.0"	16.0"	16.0"	16.0"	16.0"	16.0"	
		48	16.0"	16.0"	16.0"	16.0"	16.0"	16.0"	16.0"	16.0"	16.0"	16.0"	16.0"	16.0"	16.0"	16.0"	16.0"	
		62	16.0"	16.0"	16.0"	16.0"	16.0"	16.0"	16.0"	16.0"	9.2"	14.1"	16.0"	11.0"	16.0"	6.8"	5.5"	
		76	16.0"	16.0"	16.0"	14.1"	16.0"	16.0"	12.4"	16.0"	7.4"	9.7"	14.4"	8.4"	14.4"	5.5"	6.9"	
		90	16.0"	16.0"	16.0"	11.7"	16.0"	16.0"	9.8"	16.0"	6.2"	7.4"	12.2"	6.8"	11.4"	4.6"	4.9"	
		105	16.0"	16.0"	16.0"	9.9"	16.0"	13.9"	8.0"	13.9"	5.3"	5.9"	10.4"	5.6"	9.1"	3.9"	4.0"	
	120	16.0"	15.1"	16.0"	8.5"	12.3"	12.2"	6.8"	11.4"	4.6"	4.9"	9.1"	4.8"	7.7"	3.4"	3.4"		
	33	16.0"	16.0"	16.0"	16.0"	16.0"	16.0"	16.0"	16.0"	16.0"	16.0"	16.0"	16.0"	16.0"	16.0"	16.0"		
	48	16.0"	16.0"	16.0"	16.0"	16.0"	16.0"	16.0"	16.0"	16.0"	16.0"	16.0"	16.0"	16.0"	16.0"	16.0"		
	62	16.0"	16.0"	16.0"	16.0"	16.0"	16.0"	16.0"	16.0"	16.0"	16.0"	16.0"	16.0"	16.0"	16.0"	16.0"		
	76	16.0"	16.0"	16.0"	14.4"	16.0"	16.0"	10.8"	16.0"	7.5"	8.4"	12.5"	7.3"	12.5"	5.5"	5.4"		
	90	16.0"	16.0"	16.0"	11.8"	16.0"	14.1"	8.5"	14.1"	6.2"	6.4"	10.6"	5.9"	9.9"	4.6"	4.3"		
105	16.0																	

ANCHOR SCHEDULES (CONTINUED):

HOST STRUCT.	ANCHOR	LOAD (psf)	EDGE DISTANCES AS NOTED														
			Spans Up To 5'-0"					Spans Up To 9'-0"					Spans Up To 12'-0"				
			CONN TYPE					CONN TYPE					CONN TYPE				
			C1	C2	C3	C4	C5	C1	C2	C3	C4	C5	C1	C2	C3	C4	C5
HOLLOW CONCRETE BLOCK	1/4" ITW S.S. TAPCON WITH 1-1/4" MIN. EMBED AND 2-1/2" MIN. EDGE DISTANCE	33	16.0"	16.0"	16.0"	11.6"	16.0"	10.3"	10.3"	10.3"	6.4"	10.3"	7.8"	7.3"	7.8"	4.7"	7.8"
		48	12.8"	12.8"	12.8"	8.0"	12.8"	7.1"	6.2"	7.1"	4.3"	6.0"	5.3"	3.8"	5.3"	3.1"	3.1"
		62	9.9"	9.9"	9.9"	6.2"	9.9"	5.5"	3.9"	5.5"	3.2"	3.3"	4.1"			4.1"	
		76	8.1"	8.0"	8.1"	5.0"	8.1"	4.5"		4.5"			3.4"			3.4"	
		90	6.8"	5.7"	6.8"	4.1"	5.4"	3.8"		3.8"							
		105	5.9"	4.4"	5.9"	3.4"	3.7"	3.3"		3.2"							
	120	5.1"	3.5"	5.1"													
	1/4" ELCO ULTRACON WITH 1-1/4" MIN. EMBED AND 2-1/2" MIN. EDGE DISTANCE	33	16.0"	16.0"	16.0"	10.5"	16.0"	11.3"	11.3"	11.3"	5.9"	11.3"	8.5"	8.0"	8.5"	4.3"	8.5"
		48	14.0"	14.0"	14.0"	7.2"	14.0"	7.8"	6.7"	7.8"	3.9"	6.6"	5.8"	4.1"	5.8"		
		62	10.8"	10.8"	10.8"	5.6"	10.8"	6.0"	4.3"	6.0"		4.5"			4.5"		
		76	8.8"	8.8"	8.8"	4.5"	8.8"	4.9"		4.9"							
		90	7.5"	6.2"	7.5"		5.9"	4.1"		4.1"							
105		6.4"	4.8"	6.4"		4.1"											
120	5.6"	3.9"	5.6"														
HOLLOW CONCRETE BLOCK	1/4" ELCO PANELMATE (FEMALE, MALE, OR PLUS) W/ 1-1/4" MIN EMBED AND 3" MIN. EDGE DISTANCE	33	16.0"	16.0"	16.0"	14.9"	16.0"	16.0"	16.0"	8.3"	16.0"	12.7"	12.0"	12.7"	6.1"	12.7"	
		48	16.0"	16.0"	16.0"	10.2"	16.0"	11.7"	10.1"	11.7"	5.5"	9.9"	8.8"	6.2"	8.8"	4.0"	5.1"
		62	16.0"	16.0"	16.0"	7.9"	16.0"	9.0"	6.5"	9.0"	4.1"	5.4"	6.8"	4.2"	6.8"		
		76	13.3"	13.1"	13.3"	6.4"	13.3"	7.4"	4.8"	7.4"		5.5"			5.5"		
		90	11.2"	9.4"	11.2"	5.3"	8.9"	6.2"		6.2"					4.4"		
		105	9.6"	7.1"	9.6"	4.4"	6.2"	5.3"		5.3"		4.0"					
	120	8.4"	5.8"	8.4"		4.7"	4.7"		4.4"								
	1/4" ITW TAPCON SG W/ 1-1/4" MIN EMBED AND 2-1/2" MIN. EDGE DISTANCE	33	16.0"	16.0"	16.0"	16.0"	16.0"	16.0"	16.0"	11.3"	16.0"	16.0"	16.0"	16.0"	8.4"	16.0"	
		48	16.0"	16.0"	16.0"	13.9"	16.0"	16.0"	16.0"	7.6"	16.0"	16.0"	11.4"	16.0"	5.5"	9.4"	
		62	16.0"	16.0"	16.0"	10.8"	16.0"	16.0"	12.0"	16.0"	5.7"	10.0"	12.5"	7.8"	12.5"	4.2"	6.0"
		76	16.0"	16.0"	16.0"	8.7"	16.0"	13.6"	8.8"	13.6"	4.6"	6.9"	10.2"	6.0"	10.2"	3.4"	4.4"
		90	16.0"	16.0"	16.0"	7.3"	16.0"	11.5"	7.0"	11.5"	3.9"	5.3"	8.6"	4.8"	8.1"		3.5"
105		16.0"	13.2"	16.0"	6.1"	11.4"	9.9"	5.7"	9.8"	3.3"	4.2"	7.4"	4.0"	6.5"			
120	15.5"	10.7"	15.5"	5.3"	8.7"	8.6"	4.8"	8.1"		3.5"	6.5"	3.4"	5.4"				
HOLLOW CONCRETE BLOCK	1/4-20 ALL POINTS SOLID-SET WITH 7/8" MIN EMBED AND 2" MIN. EDGE DISTANCE	33	16.0"	16.0"	16.0"	16.0"	16.0"	16.0"	16.0"	9.5"	16.0"	16.0"	16.0"	16.0"	7.0"	16.0"	
		48	16.0"	16.0"	16.0"	11.7"	16.0"	15.9"	13.8"	15.9"	6.4"	13.5"	11.9"	8.4"	11.9"	4.6"	6.9"
		62	16.0"	16.0"	16.0"	9.1"	16.0"	12.3"	8.8"	12.3"	4.8"	7.4"	9.2"	5.8"	9.2"	3.5"	4.4"
		76	16.0"	16.0"	16.0"	7.4"	16.0"	10.0"	6.5"	10.0"	3.9"	5.1"	7.5"	4.4"	7.5"		3.3"
		90	15.3"	12.8"	15.3"	6.1"	12.1"	8.5"	5.1"	8.5"	3.2"	3.9"	6.4"	3.6"	5.9"		
		105	13.1"	9.7"	13.1"	5.1"	8.4"	7.3"	4.2"	7.3"		3.1"	5.5"		4.8"		
	120	11.5"	7.9"	11.5"	4.4"	6.4"	6.4"	3.6"	5.9"			4.8"		4.0"			
	1/4" MILLENIUM MILLFAST ANCHOR W/ 1-1/4" EMBED AND 1" EDGE DISTANCE	33	16.0"	16.0"	16.0"	8.5"	16.0"	10.9"	10.9"	10.9"	4.7"	10.9"	8.1"	7.7"	8.1"	3.5"	8.1"
		48	13.4"	13.4"	13.4"	5.8"	13.4"	7.5"	6.5"	7.5"		6.3"	5.6"		5.6"		
		62	10.4"	10.4"	10.4"	4.5"	10.4"	5.8"	4.1"	5.8"			4.3"		4.3"		
		76	8.5"	8.4"	8.5"		8.5"	4.7"		4.7"							
		90	7.2"	6.0"	7.2"		5.7"	4.0"		4.0"							
105		6.1"	4.6"	6.1"													
120	5.4"		5.4"														
HOLLOW CONCRETE BLOCK	1/4" MILLENIUM MILLFAST ANCHOR W/ 1-1/4" EMBED AND 2-1/2" EDGE DISTANCE	33	16.0"	16.0"	16.0"	12.8"	16.0"	12.0"	12.0"	7.1"	12.0"	9.0"	8.5"	9.0"	5.2"	9.0"	
		48	14.8"	14.8"	14.8"	8.8"	14.8"	8.2"	7.1"	8.2"	4.7"	7.0"	6.2"	4.3"	6.2"		
		62	11.5"	11.5"	11.5"	6.8"	11.5"	6.4"	4.6"	6.4"			4.8"		4.8"		
		76	9.3"	9.3"	9.3"	5.5"	9.3"	5.2"		5.2"							
		90	7.9"	6.6"	7.9"	4.5"	6.2"	4.4"		4.4"							
		105	6.8"	5.0"	6.8"		4.3"										
	120	5.9"	4.1"	5.9"													
	#12 SMS W/ 2" EYEWALL ARMOR INSERT W/ 1-1/4" EMBED WITH 2" EDGE DISTANCE	33	16.0"	16.0"	16.0"	15.5"	16.0"	16.0"	16.0"	8.6"	16.0"	14.0"	13.2"	14.0"	6.4"	14.0"	
		48	16.0"	16.0"	16.0"	10.7"	16.0"	12.8"	11.1"	12.8"	5.8"	10.9"	9.6"	6.8"	9.6"	4.2"	5.6"
		62	16.0"	16.0"	16.0"	8.3"	16.0"	9.9"	7.1"	9.9"	4.3"	5.9"	7.4"	4.6"	7.4"	3.2"	3.6"
		76	14.5"	14.4"	14.5"	6.7"	14.5"	8.1"	5.2"	8.1"	3.5"	4.1"	6.1"	3.5"	6.1"		
		90	12.3"	10.3"	12.3"	5.5"	9.7"	6.8"	4.1"	6.8"		3.1"	5.1"		4.8"		
105		10.5"	7.8"	10.5"	4.6"	6.7"	5.8"	3.4"	5.8"			4.4"		3.9"			
120	9.2"	6.3"	9.2"	4.0"	5.2"	5.1"		4.8"			3.8"		3.2"				

HOST STRUCT.	ANCHOR	LOAD (psf)	EDGE DISTANCES AS NOTED														
			Spans Up To 5'-0"					Spans Up To 9'-0"					Spans Up To 12'-0"				
			CONN TYPE					CONN TYPE					CONN TYPE				
			C1	C2	C3	C4	C5	C1	C2	C3	C4	C5	C1	C2	C3	C4	C5
HOLLOW CONCRETE BLOCK	1/4" ITW S.S. TAPCON WITH 1-1/4" MIN. EMBED AND 1" MIN. EDGE DISTANCE	33	13.6"	13.6"	13.6"	6.1"	13.6"	7.6"	7.6"	7.6"	3.4"	7.6"	5.7"	5.4"	5.7"		
		48	9.4"	9.4"	9.4"	4.2"	9.4"	5.2"	4.5"	5.2"		4.4"	3.9"	3.9"			
		62	7.2"	7.2"	7.2"	3.2"	7.2"	4.0"		4.0"			3.0"	3.0"			
		76	5.9"	5.9"	5.9"		5.9"	3.3"		3.3"							
		90	5.0"	4.2"	5.0"		4.0"										
		105	4.3"	3.2"	4.3"												
	120	3.7"		3.7"													
	1/4" ELCO ULTRACON WITH 1-1/4" MIN. EMBED AND 1" MIN. EDGE DISTANCE	33	16.0"	16.0"	16.0"	11.4"	16.0"	11.3"	11.3"	11.3"	6.3"	11.3"	8.5"	8.0"	8.5"		8.5"
		48	14.0"	14.0"	14.0"	7.8"	14.0"	7.8"	6.7"	7.8"		6.6"					
		62	10.8"	10.8"	10.8"	6.1"	10.8"	6.0"		6.0"							
		76	8.8"	8.8"	8.8"		8.8"			8.8"							
		90	7.5"	6.2"	7.5"		5.9"	4.1"		4.1"							
105		6.4"		6.4"													
120																	
HOLLOW CONCRETE BLOCK	1/4" ELCO PANELMATE (MALE OR PLUS) W/ 1-1/4" MIN EMBED AND 2" MIN. EDGE DISTANCE	33	16.0"	16.0"	16.0"	15.6"	16.0"	16.0"	16.0"	8.7"	16.0"	13.2"	12.5"	13.2"	6.4"	13.2"	
		48	16.0"	16.0"	16.0"	10.8"	16.0"	12.1"	10.5"	12.1"	5.8"	10.3"	9.1"	6.4"	9.1"	4.2"	5.3"
		62	16.0"	16.0"	16.0"	8.3"	16.0"	9.4"	6.7"	9.4"	4.4"	5.6"	7.0"	4.4"	7.0"		
		76	13.8"	13.6"	13.8"	6.7"	13.8"	7.7"	5.0"	7.7"			5.7"		5.7"		
		90	11.6"	9.7"	11.6"	5.5"	9.2"	6.5"		6.5"			4.8"		4.5"		
		105	10.0"	7.4"	10.0"	4.7"	6.4"	5.5"		5.5"			4.2"				
	120	8.7"	6.0"	8.7"	4.0"	4.9"	4.8"		4.5"								
	1/4" ITW TAPCON SG W/ 1-1/4" MIN EMBED AND 1-1/4" MIN. EDGE DISTANCE	33	16.0"	16.0"	16.0"	12.2"	16.0"	16.0"	16.0"	16.0"	6.8"	16.0"	16.0"	16.0"	5.1"	16.0"	
		48	16.0"	16.0"	16.0"	8.4"	16.0"	16.0"	16.0"	16.0"	4.6"	16.0"	16.0"	16.0"	3.4"	16.0"	
		62	16.0"	16.0"	16.0"	6.5"	16.0"	16.0"	12.0"	16.0"	3.5"	10.0"	12.5"	7.8"	12.5"	6.0"	
		76	16.0"	16.0"	16.0"	5.3"	16.0"	13.6"	8.8"	13.6"		6.9"	10.2"	6.0"	10.2"	4.4"	
		90	16.0"	16.0"	16.0"	4.4"	16.0"	11.5"	7.0"	11.5"		5.3"	8.6"	4.8"	8.1"	3.5"	
105		16.0"	13.2"	16.0"	3.7"	11.4"	9.9"	5.7"	9.8"		4.2"	7.4"	4.0"	6.5"			
120	15.5"	10.7"	15.5"	3.3"	8.7"	8.6"	4.8"	8.1"		3.5"	6.5"	3.4"	5.4"				
HOLLOW CONCRETE BLOCK	1/4-20 ALL POINTS SOLID-SET WITH 7/8" MIN EMBED AND 1-1/4" MIN. EDGE DISTANCE	33	16.0"	16.0"	16.0"	10.3"	16.0"	13.4"	13.4"	5.7"	13.4"	10.1"	9.5"	10.1"	4.2"	10.1"	
		48	16.0"	16.0"	16.0"	7.1"	16.0"	9.2"	8.0"	9.2"	3.8"	7.9"	6.9"	4.9"	6.9"	4.0"	
		62	12.9"	12.9"	12.9"	5.5"	12.9"	7.2"	5.1"	7.2"		4.3"	5.4"	3.4"	5.4"		
		76	10.5"	10.4"	10.5"	4.4"	10.5"	5.8"	3.8"	5.8"		3.0"	4.4"	4.4"	4.4"		
		90	8.9"	7.4"	8.9"	3.7"	7.0"	4.9"	3.0"	4.9"		3.7"	3.7"	3.5"			
		105	7.6"	5.7"	7.6"	3.1"	4.9"	4.2"		4.2"			3.2"		3.2"		
	120	6.7"	4.6"	6.7"		3.7"	3.7"		3.5"								

HOST STRUCT.	ANCHOR	LOAD (psf)	EDGE DISTANCES AS NOTED														
			Spans Up To 5'-0"					Spans Up To 9'-0"					Spans Up To 12'-0"				

V:\Projects\15-2336 0.050 Aluminum Storm Panel - FSA - Update FL12856.1 for 2014 Florida Bid-Project\WP15-2336b_11-TCM-0003_04a 0.050 Alum Storm Panel (FSA).dwg

HOST STRUCT.	ANCHOR	LOAD (psf)	3/4" MIN EDGE DISTANCE														
			Spans Up To 5'-0"					Spans Up To 9'-0"					Spans Up To 12'-0"				
			CONN TYPE					CONN TYPE					CONN TYPE				
	C1	C2	C3	C4	C5	C1	C2	C3	C4	C5	C1	C2	C3	C4	C5		
WOOD (G=0.42 MIN.)	1/4" LAG SCREW OR HANGER BOLT WITH 1.5" MIN THREAD PENETRATION	33	16.0"	16.0"	16.0"	15.9"	16.0"	16.0"	16.0"	16.0"	8.9"	16.0"	16.0"	16.0"	16.0"	6.6"	16.0"
		48	16.0"	16.0"	16.0"	11.0"	16.0"	16.0"	16.0"	16.0"	6.0"	16.0"	16.0"	12.2"	16.0"	4.4"	10.1"
		62	16.0"	16.0"	16.0"	8.5"	16.0"	16.0"	12.8"	16.0"	4.6"	10.7"	13.4"	8.4"	13.4"	3.4"	6.4"
		76	16.0"	16.0"	16.0"	6.9"	16.0"	14.6"	9.4"	14.6"	3.7"	7.4"	10.9"	6.4"	10.9"	2.7"	4.7"
		90	16.0"	16.0"	16.0"	5.7"	16.0"	12.3"	7.5"	12.3"	3.1"	5.6"	9.2"	5.2"	8.6"	2.3"	3.7"
		105	16.0"	14.1"	16.0"	4.9"	12.2"	10.6"	6.1"	10.5"	2.6"	4.5"	7.9"	4.3"	7.0"	2.0"	3.0"
	120	16.0"	11.5"	16.0"	4.2"	9.3"	9.2"	5.2"	8.6"	2.3"	3.7"	6.9"	3.7"	5.8"		2.6"	
	#14 WOOD SCREW OR SMS WITH 1.5" MIN. THREAD PENETRATION	33	16.0"	16.0"	16.0"	15.1"	16.0"	16.0"	16.0"	8.4"	16.0"	16.0"	16.0"	16.0"	6.2"	16.0"	
		48	16.0"	16.0"	16.0"	10.4"	16.0"	16.0"	14.0"	16.0"	5.6"	13.8"	12.2"	8.6"	12.2"	4.1"	7.1"
		62	16.0"	16.0"	16.0"	8.0"	16.0"	12.6"	9.0"	12.6"	4.3"	7.5"	9.4"	5.9"	9.4"	3.1"	4.5"
		76	16.0"	16.0"	16.0"	6.5"	16.0"	10.2"	6.6"	10.2"	3.4"	5.2"	7.7"	4.5"	7.7"	2.5"	3.3"
		90	15.6"	13.0"	15.6"	5.4"	12.3"	8.7"	5.2"	8.7"	2.9"	4.0"	6.5"	3.6"	6.1"	2.1"	2.6"
105		13.3"	9.9"	13.3"	4.6"	8.6"	7.4"	4.3"	7.4"	2.4"	3.1"	5.6"	3.0"	4.9"		2.1"	
120	11.7"	8.0"	11.7"	3.9"	6.5"	6.5"	3.6"	6.1"	2.1"	2.6"	4.9"	2.6"	4.1"		2.1"		
WOOD (G=0.55 MIN.)	1/4" LAG SCREW OR HANGER BOLT WITH 1.5" MIN THREAD PENETRATION	33	16.0"	16.0"	16.0"	16.0"	16.0"	16.0"	16.0"	7.0"	16.0"	16.0"	16.0"	16.0"	5.2"	16.0"	
		48	16.0"	16.0"	16.0"	8.6"	16.0"	15.7"	13.6"	15.7"	4.7"	13.4"	11.8"	8.3"	11.8"	3.5"	6.9"
		62	16.0"	16.0"	16.0"	6.7"	16.0"	12.2"	8.7"	12.2"	3.6"	7.3"	9.1"	5.7"	9.1"	2.6"	4.4"
		76	16.0"	16.0"	16.0"	5.4"	16.0"	9.9"	6.4"	9.9"	2.9"	5.0"	7.5"	4.4"	7.5"	2.1"	3.2"
		90	15.1"	12.6"	15.1"	4.5"	12.0"	8.4"	5.1"	8.4"	2.4"	3.8"	6.3"	3.5"	5.9"		2.5"
		105	13.0"	9.6"	13.0"	3.8"	8.3"	7.2"	4.2"	7.2"	2.1"	3.1"	5.4"	2.9"	4.7"		2.1"
		120	11.3"	7.8"	11.3"	3.3"	6.4"	6.3"	3.5"	5.9"		2.5"	4.7"	2.5"	4.0"		2.1"
WOOD (G=0.55 MIN.)	#14 WOOD SCREW OR SMS WITH 1.5" MIN. THREAD PENETRATION	33	16.0"	16.0"	16.0"	16.0"	16.0"	16.0"	16.0"	16.0"	16.0"	16.0"	16.0"	16.0"	11.5"	16.0"	
		48	16.0"	16.0"	16.0"	14.2"	16.0"	16.0"	16.0"	16.0"	7.8"	16.0"	16.0"	14.7"	16.0"	5.7"	12.1"
		62	16.0"	16.0"	16.0"	11.0"	16.0"	16.0"	15.4"	16.0"	5.9"	12.9"	16.0"	10.1"	16.0"	4.4"	7.7"
		76	16.0"	16.0"	16.0"	8.9"	16.0"	16.0"	11.4"	16.0"	4.8"	8.9"	13.2"	7.7"	13.2"	3.5"	5.7"
		90	16.0"	16.0"	16.0"	7.4"	16.0"	14.8"	9.0"	14.8"	4.0"	6.8"	11.1"	6.2"	10.4"	3.0"	4.5"
		105	16.0"	16.0"	16.0"	6.3"	14.7"	12.7"	7.3"	12.7"	3.4"	5.4"	9.5"	5.1"	8.4"	2.5"	3.7"
		120	16.0"	13.8"	16.0"	5.5"	11.2"	11.1"	6.2"	10.4"	3.0"	4.5"	8.3"	4.4"	7.0"	2.2"	3.1"

HOST STRUCT.	ANCHOR	LOAD (psf)	3/4" MIN EDGE DISTANCE														
			Spans Up To 5'-0"					Spans Up To 9'-0"					Spans Up To 12'-0"				
			CONN TYPE					CONN TYPE					CONN TYPE				
	C1	C2	C3	C4	C5	C1	C2	C3	C4	C5	C1	C2	C3	C4	C5		
WOOD (G=0.42 MIN.)	1/4" ELCO PANELMATE (FEMALE, MALE, OR PLUS) W/ 1-7/8" MIN EMBED	33	16.0"	16.0"	16.0"	16.0"	16.0"	16.0"	16.0"	16.0"	16.0"	16.0"	16.0"	16.0"	16.0"	16.0"	
		48	16.0"	16.0"	16.0"	16.0"	16.0"	16.0"	16.0"	16.0"	10.9"	16.0"	16.0"	16.0"	16.0"	16.0"	
		62	16.0"	16.0"	16.0"	15.5"	16.0"	16.0"	16.0"	16.0"	8.3"	16.0"	16.0"	13.3"	16.0"	6.1"	
		76	16.0"	16.0"	16.0"	12.6"	16.0"	16.0"	14.9"	16.0"	6.7"	11.7"	16.0"	10.1"	16.0"	4.9"	
		90	16.0"	16.0"	16.0"	10.5"	16.0"	16.0"	11.8"	16.0"	5.6"	8.9"	14.6"	8.2"	13.7"	4.2"	
		105	16.0"	16.0"	16.0"	8.9"	16.0"	16.0"	9.7"	16.0"	4.8"	7.1"	12.5"	6.8"	11.0"	3.5"	
	120	16.0"	16.0"	16.0"	7.7"	14.8"	14.6"	8.2"	13.7"	4.2"	5.9"	11.0"	5.8"	9.2"	3.1"		
	1/4" LAG SCREW OR HANGER BOLT WITH 1.5" MIN THREAD PENETRATION	33	16.0"	16.0"	16.0"	16.0"	16.0"	16.0"	16.0"	16.0"	11.1"	16.0"	16.0"	16.0"	16.0"	8.2"	
		48	16.0"	16.0"	16.0"	13.7"	16.0"	16.0"	16.0"	7.5"	16.0"	16.0"	16.0"	16.0"	16.0"	5.5"	
		62	16.0"	16.0"	16.0"	10.6"	16.0"	16.0"	16.0"	5.7"	16.0"	16.0"	12.6"	16.0"	4.2"	9.6"	
		76	16.0"	16.0"	16.0"	8.6"	16.0"	16.0"	14.1"	16.0"	4.6"	11.1"	16.0"	9.6"	16.0"	3.4"	
		90	16.0"	16.0"	16.0"	7.2"	16.0"	16.0"	11.2"	16.0"	3.9"	8.4"	13.8"	7.7"	12.9"	2.9"	
105		16.0"	16.0"	16.0"	6.1"	16.0"	15.8"	9.1"	15.8"	3.3"	6.7"	11.9"	6.4"	10.4"	2.5"		
120	16.0"	16.0"	16.0"	5.3"	14.0"	13.8"	7.7"	12.9"	2.9"	5.6"	10.4"	5.5"	8.7"	2.2"			
WOOD (G=0.55 MIN.)	#14 WOOD SCREW OR SMS WITH 1.5" MIN. THREAD PENETRATION	33	16.0"	16.0"	16.0"	16.0"	16.0"	16.0"	16.0"	16.0"	16.0"	16.0"	16.0"	16.0"	16.0"	8.5"	
		48	16.0"	16.0"	16.0"	14.2"	16.0"	16.0"	16.0"	16.0"	7.8"	16.0"	16.0"	14.7"	16.0"	5.7"	
		62	16.0"	16.0"	16.0"	11.0"	16.0"	16.0"	15.4"	16.0"	5.9"	12.9"	16.0"	10.1"	16.0"	4.4"	
		76	16.0"	16.0"	16.0"	8.9"	16.0"	16.0"	11.4"	16.0"	4.8"	8.9"	13.2"	7.7"	13.2"	3.5"	
		90	16.0"	16.0"	16.0"	7.4"	16.0"	14.8"	9.0"	14.8"	4.0"	6.8"	11.1"	6.2"	10.4"	3.0"	
		105	16.0"	16.0"	16.0"	6.3"	14.7"	12.7"	7.3"	12.7"	3.4"	5.4"	9.5"	5.1"	8.4"	2.5"	
		120	16.0"	13.8"	16.0"	5.5"	11.2"	11.1"	6.2"	10.4"	3.0"	4.5"	8.3"	4.4"	7.0"	2.2"	

ANCHOR NOTES:

- ANCHORS SHALL BE INSTALLED IN ACCORDANCE WITH MANUFACTURERS' RECOMMENDATIONS.
- WHERE ANCHORS FASTEN TO NARROW FACE OF STUD FRAMING, ANCHOR SHALL BE LOCATED IN CENTER OF NOMINAL 2x (MIN) WOOD STUD (i.e. 3/4" EDGE DISTANCE IS ACCEPTABLE FOR ANCHORS TO WOOD FRAMING).
- ALL CONCRETE ANCHORS SHALL BE INSTALLED TO NON-CRACKED CONCRETE ONLY.
- MINIMUM EMBEDMENT AND EDGE DISTANCE SHALL BE AS NOTED IN ANCHOR SCHEDULE. MINIMUM EMBEDMENT AND EDGE DISTANCE EXCLUDES STUCCO, FOAM, BRICK, AND OTHER WALL FINISHES.
- ANCHOR SCHEDULE APPLIES TO ALL PRODUCTS CERTIFIED HEREIN, BUT ONLY PROVIDES MAXIMUM ALLOWABLE ANCHOR SPACING. MAXIMUM ALLOWABLE SPANS AND PRESSURES INDICATED IN SPAN SCHEDULE(S) SHALL APPLY.
- WHERE EXISTING STRUCTURE IS WOOD FRAMING, EXISTING CONDITIONS MAY VARY. FIELD VERIFY THAT FASTENERS ARE INTO ADEQUATE WOOD FRAMING MEMBERS, NOT INTO PLYWOOD.
- MACHINE SCREWS SHALL HAVE MINIMUM OF 1/2" ENGAGEMENT OF THREADS IN BASE ANCHOR AND MAY HAVE EITHER A PAN HEAD, TRUSS HEAD, OR WAFER HEAD ("SIDEWALK BOLT") U.N.O.
- DESIGNATES ANCHOR CONDITIONS WHICH ARE NOT ACCEPTABLE FOR USE.
- DESIGNATES ANCHORS WHICH ARE REMOVABLE AND MAY BE USED FOR DIRECT MOUNT INSTALLATIONS.
- WHEN ANCHORING TO HOLLOW BLOCK, SDS DRILLS SHOULD NOT BE USED TO DRILL INTO HOLLOW BLOCK, NOR SHOULD IMPACT DRILLS BE USED TO INSTALL CONCRETE SCREWS TO HOLLOW BLOCK

FRANK L. BENNARDO, P.E.
No 46549
ENGINEERING EXPRESS
160 SW 12th Avenue, Suite 33442
DEERFIELD BEACH, FL 33442
PH: (954) 354-0660 FAX: (954) 354-0443
WWW.ENGPX.COM
CERT OF AUTH #9885
A FRANK L. BENNARDO, P.E., INC. INNOVATION

Town & Country
INDUSTRIES
Wholesale Aluminum and Building Products
A Division of ABC Supply Co., Inc.
400 WEST MCNAB ROAD
FT. LAUDERDALE, FL 33309
FL12856.1

REMARKS	DRWN	CHKD	DATE
INIT: ISSUE	KL	FLB	06/03/11
2010 PBC	CSL	KL	12/16/11
CLIENT REVISIONS	KL	FLB	10/25/13
2014 FRC (11-TCM-0003)	RWN	CSL	03/13/15

THIS DOCUMENT IS THE PROPERTY OF FRANK L. BENNARDO, P.E. AND SHALL NOT BE REPRODUCED OR TRANSMITTED IN ANY FORM OR BY ANY MEANS, ELECTRONIC OR MECHANICAL, INCLUDING PHOTOCOPYING, RECORDING, OR BY ANY INFORMATION STORAGE AND RETRIEVAL SYSTEMS. TO THIS DOCUMENT ARE NOT PRINTED AND INVALIDATE OUR CERTIFICATION.

COPYRIGHT FRANK L. BENNARDO P.E.

15-2336
SCALE: -
PAGE DESCRIPTION:
10 OF 10